



Code	Botanical Name	Common Name	Grade	Spacing
○	<i>Knightia excelsa</i>	rewarewa	45L	Marked
○	<i>Quercus rubra</i>	red oak	45L	Marked
● HT	Hedges Tall (maintained at 1.5m H)			
●	<i>Camellia 'Setsugekka'</i>	camellia	12L	700mm
■ AP1	Amenity Planting Mix 1			
	<i>Caprosma 'Hawera'</i>	groundcover Caprosma	2L	1m
	<i>Dianella nigra</i>	turutu	2L	1m
	<i>Hebe 'Wiri Mist'</i>	shrubby Veronica	2L	1m
	<i>Phormium cookianum</i>	wharariki	2L	1m
■ AP2	Amenity Planting Mix 2			
	<i>Caprosma Black Cloud</i>	mirror bush	2L	1m
	<i>Dianella nigra</i>	turutu	2L	1m
	<i>Muehlenbeckia axillaris</i>	pohuehue	2L	1m
	<i>Phormium 'Dwarf Green'</i>	dwarf mountain flax	2L	1m
Notes: *Planting mixes to be planted in species groups of 3 min. for small garden (<9m2) and 5 min. for larger gardens (>9m2)				
Hardscape Surfaces, Elements & Fencing				
A. Signage		By Others		
B. Timber paling fence		1.8m high, 150x25mm H3.2 vertical palings, no spacing, stained a recessive colour		



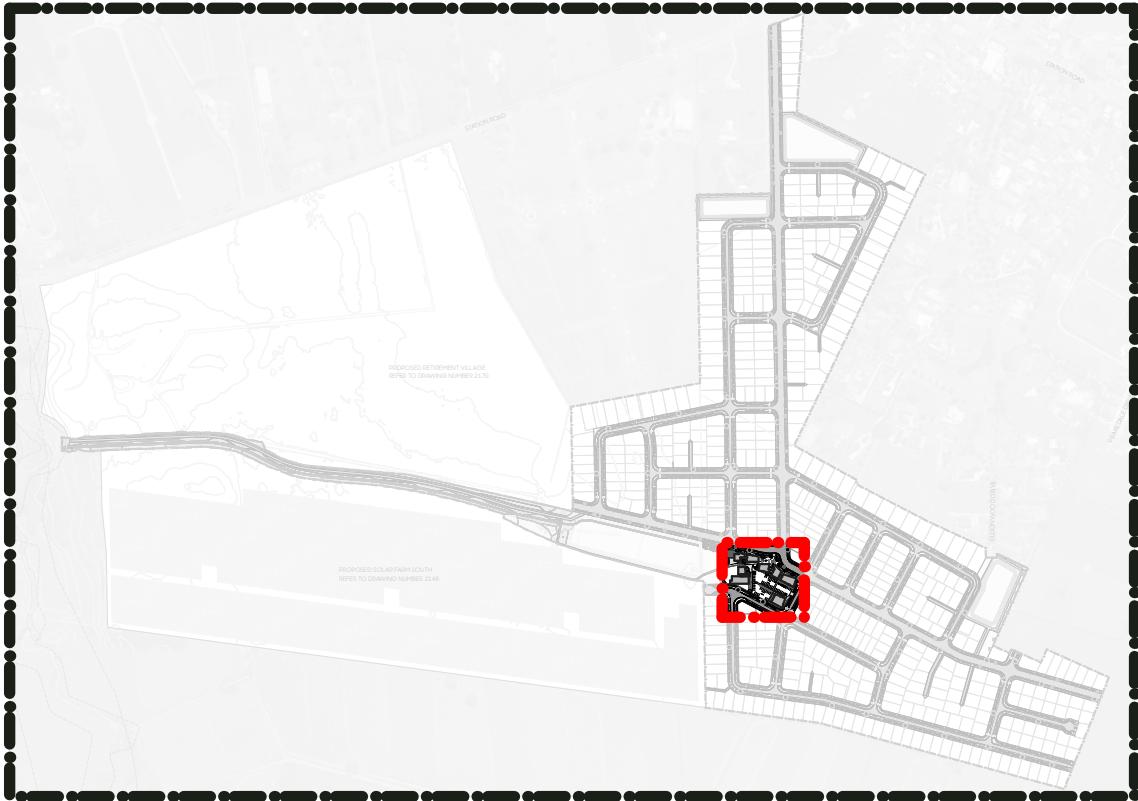
**NOTES:**

All plans are to be read in conjunction with Awa Architecture Plan Set and Maven Civil Plan Set.

Prior to excavating tree pits and planting specimen trees, confirm on site there are no clashes with underground services. Notify the Landscape Architect if any clashes are likely to occur.

All trees shall be at least 1.5m high at the time of planting and once established must be maintained at a height of at least 3m thereafter (with the exception of any proposed fruit trees)

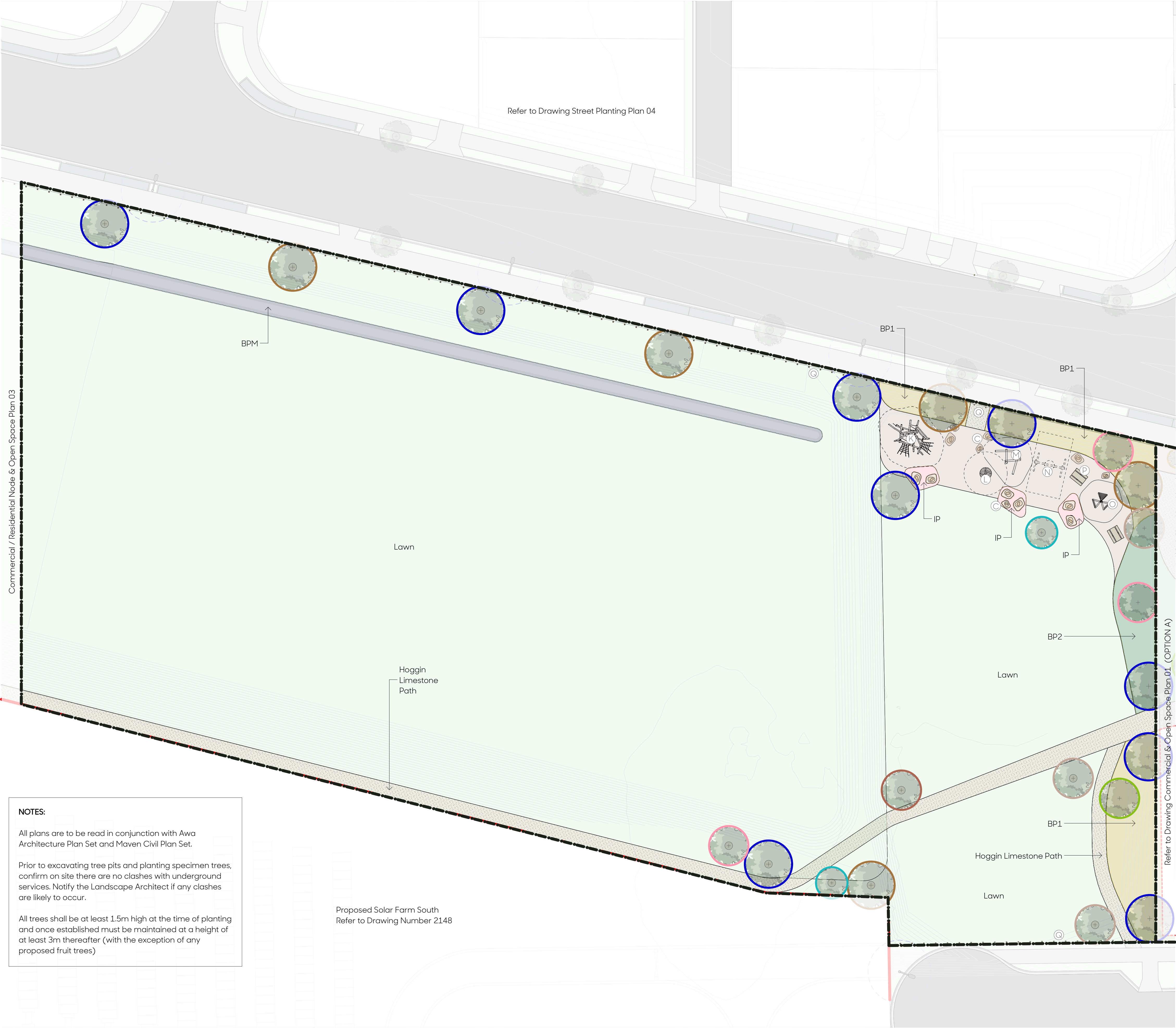
LEGEND			
○	SpecimenTrees w/ Bark Mulch	■	Concrete Firth 'Mountain Burst'
■	Lawn	■	Concrete Firth 'Manorfield'
■	Standard Concrete	■	Hoggin Limestone



SHEET LOCATION PLAN - NTS



Commercial / Residential Node & Open Space Plan 03








NOTES:

All plans are to be read in conjunction with Awa Architecture Plan Set and Maven Civil Plan Set.

Prior to excavating tree pits and planting specimen trees, confirm on site there are no clashes with underground services. Notify the Landscape Architect if any clashes are likely to occur.

All trees shall be at least 1.5m high at the time of planting and once established must be maintained at a height of at least 3m thereafter (with the exception of any proposed fruit trees)

Proposed Solar Farm South  
Refer to Drawing Number 2148

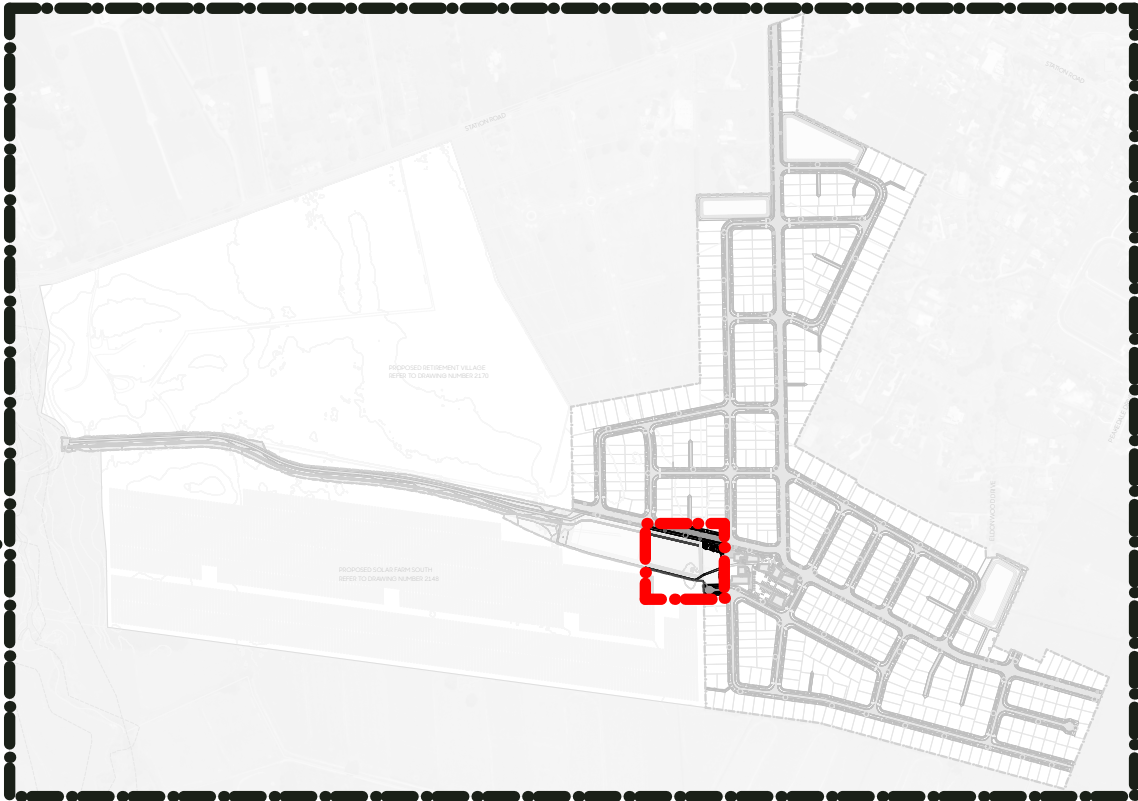
Code	Botanical Name	Common Name	Grade	Spacing
Specimen Trees – Streets				
    	<i>Alectryon excelsus</i>	titoki	100L	Marked
	<i>Knightia excelsa</i>	rewarewa	100L	Marked
	<i>Podocarpus totata 'Aurea'</i>	golden totara	100L	Marked
	<i>Quercus rubra</i>	red oak	80L	Marked
	<i>Sophara microphylla</i>	kōwhai	80L	Marked
	<i>Vitex lucens</i>	pūriri	80L	Marked
IP	Island Planting Mix			
	<i>Carex comans 'Frosted Curly'</i>	frosted curl grass	2L	1m
	<i>Muehlenbeckia axillaris</i>	pohuehue	2L	1m
BP1	Buffer Planting Mix 1			
	<i>Blechnum novae-zelandiae</i>	kiokio	2L	0.75m
	<i>Machaerina sinclairii</i>	pepepe	2L	0.75m
	<i>Malcytus crassifolius</i>	thick-leaved Mahoe	2L	0.75m
	<i>Pimelea prostrata</i>	New Zealand daphne	2L	0.75m
BP2	Buffer Planting Mix 2			
	<i>Anemathelle lessoniana</i>	pepepe	2L	0.75m
	<i>Arthropodium cirratum</i>	rengarenga lily	2L	0.75m
	<i>Coprosma 'Hawera'</i>	groundcover Coprosma	2L	0.75m
	<i>Coprosma 'Poor Knights'</i>	taupata	2L	0.75m
BPM	Basin Planting Mix			
	<i>Apodasmia similis</i>	oloi	2L	0.75m
	<i>Blechnum novae-zelandiae</i>	kiokio	2L	0.75m
	<i>Carex secta</i>	pūrei	2L	0.75m
	<i>Coprosma acerosa</i>	sand Coprosma	2L	0.75m
	<i>Corakia cotoneaster</i>	korakio	2L	0.75m
	<i>Dicksonia squarrosa</i>	wheki	10L	1m
	<i>Muehlenbeckia complexa</i>	pohuehue	2L	0.75m
	<i>Pharmium cookianum</i>	wharariki	2L	0.75m
	<i>Pseudopanax crassifolius</i>	horoeaka	10L	1m
Name		Specification		
Hardscape Surfaces & Elements				
A. Commercial Signage		By Others		
B. Timber platform (custom)		450mm High, Hardwood timber slats with black powder coated laster cut		
C. Hinuera Stone features		Varied sizes (750mm min. diameter)		
D. Pou whenua (by others)		TBC, Indicative locations only		
E. & F. Exposed aggregate concrete selections - Pedestrain		1. Standard concrete with Firth 'Mountain Burst' aggregate, exposed aggregate finish <b>AND</b> 2. Standard concrete with Firth 'Manorfield' aggregate, exposed aggregate finish		
G. Hinuera pavers (or etched pattern)		Hinuera Stone paving, various sizes		
H. Standard concrete - Pedestrain & Vehicular		Standard concrete, 4kg black oxide per m3, broom finish		
J. Asphalt		By others		
K. Wobbly Wood Ema Climbing Tree		By Playground Centre		
L. Wobbly Wood Family Carousel		By Playground Centre		
M. Twig Stack350		By Playground Centre		
N. Flying Saucer – Wobbly Wood Single Frame		By Playground Centre		
O. Wobbly Wood Teepee		By Playground Centre		
P. Parkvale Pedestal Table Setting		By Urban Effects or similar		
Q. Timber bollards		125 x 125mm, 900mm length, angle top with black collar		
Lawn		PGG Wrightson DuraVeg® Berm Mix		
Hoggin Limestone		Hoggin Limestone Gap 6		
Bark mulch		Cambium bark mulch		
Playground mulch		Engineered wood fibre mulch compliant with NZS 5828:2015		

SPECIMEN TREES



LEGEND

- SpecimenTrees w/ Bark Mulch
- Lawn
- Timber Bollards
- Hoggin Limestone
- Playground Bark

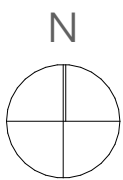


SHEET LOCATION PLAN - NTS

Client  
Unity Developments

Project  
Ashbourne Development, Matamata

Drawing  
2149/20 Commercial / Residential Node & Open Space Plan 02  
(OPTION A)



Scale  
1:250@A1  
1:500@A3

Issue Date  
28/05/25  
Issue  
RC

Drawn  
SW  
Checked  
CC

