

PROJECT NUMBER

SF24075

CLIENT

BOWEN PEAK LTD

PROJECT

PROPOSED
MULTI-UNIT
DEVELOPMENT

DRAWING LIST

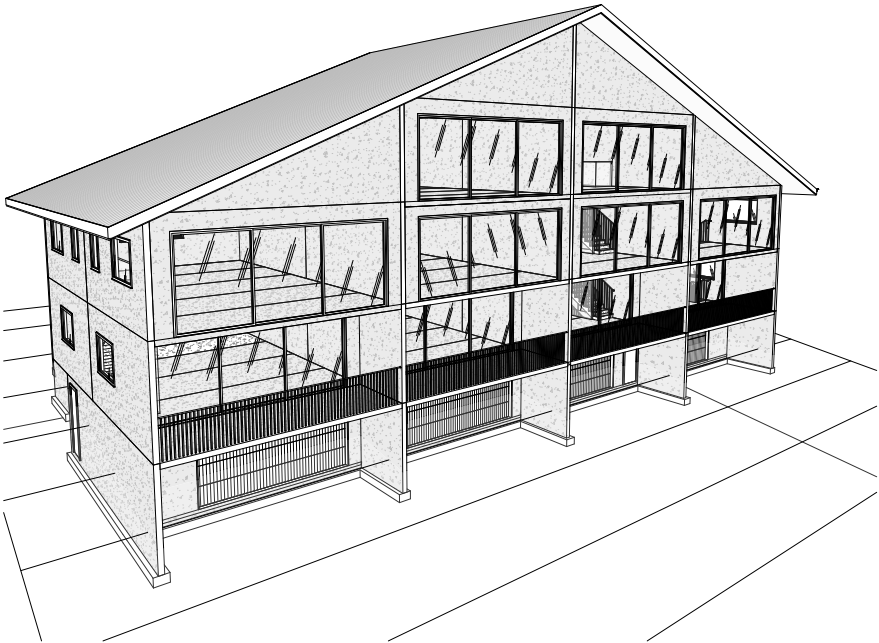
| DWG. NO. | DRAWING TITLE | REV. |
|----------|-------------------|------|
| A000 | COVER SHEET | 1 |
| A101 | GARAGE PLAN | 1 |
| A102 | GROUND FLOOR PLAN | 1 |
| A103 | LEVEL 1 PLAN | 1 |
| A104 | LEVEL 2 PLAN | 1 |
| A105 | ROOF PLAN | 1 |
| A201 | ELEVATIONS | 1 |
| A202 | ELEVATIONS | 1 |
| A203 | ELEVATIONS | 1 |
| A210 | SECTIONS | 1 |
| A211 | SECTIONS | 1 |

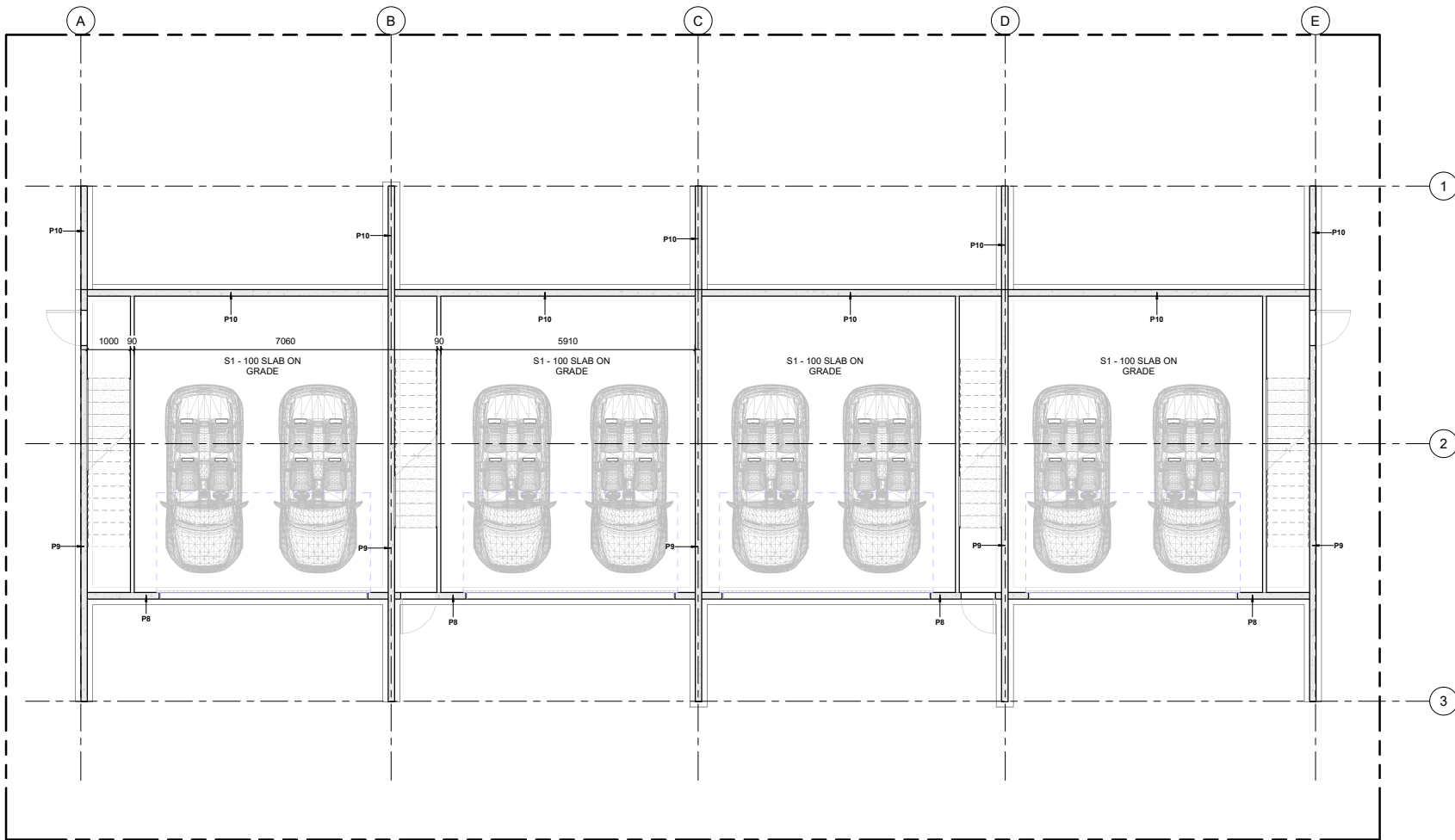


**THE STRUCTURAL
FIRM** CHARTERED ENGINEERS

A: LEVEL 2, 32 REES ST, QUEENSTOWN
E: hello@thestructuralfirm.co.nz

M: PO BOX 2115, WAKATIPU
W: www.thestructuralfirm.co.nz





MATERIAL TAKE-OFF AND QUANTITIES DISCLAIMER:

THE QUANTITIES PROVIDED ARE PRELIMINARY ESTIMATES GENERATED USING THE CURRENT REVIT MODEL. THESE ARE ESTIMATES ONLY AND ARE SUBJECT TO CHANGE AND ARE INTENDED FOR GENERAL REFERENCE PURPOSES ONLY. THEY DO NOT ACCOUNT FOR CONSTRUCTION TOLERANCES, VARIATIONS IN MATERIAL SUPPLY, OR ANY MODIFICATIONS DURING THE PROJECT LIFECYCLE.

IT IS THE RESPONSIBILITY OF THE CONTRACTOR AND OTHER RELEVANT STAKEHOLDERS TO PERFORM A DETAILED TAKE-OFF AND VERIFICATION OF QUANTITIES PRIOR TO PROCUREMENT OR EXECUTION. THE AUTHORS OF THIS DOCUMENT SHALL NOT BE HELD LIABLE FOR ANY DISCREPANCIES, COSTS, OR CLAIMS ARISING FROM RELIANCE ON THESE ESTIMATES.

1 GARAGE LEVEL
1:50 at A1 1:100 at A3

FLATSLAB FLOOR SCHEDULE

| Type Mark | Description | Count |
|-----------------|---|-------|
| FS1 | 150mm THK FLATSLAB PANELS WITH 100mm THK TOPPING SLAB | 46 |
| Grand total: 46 | | |

STRUCTURAL SLAB SCHEDULE

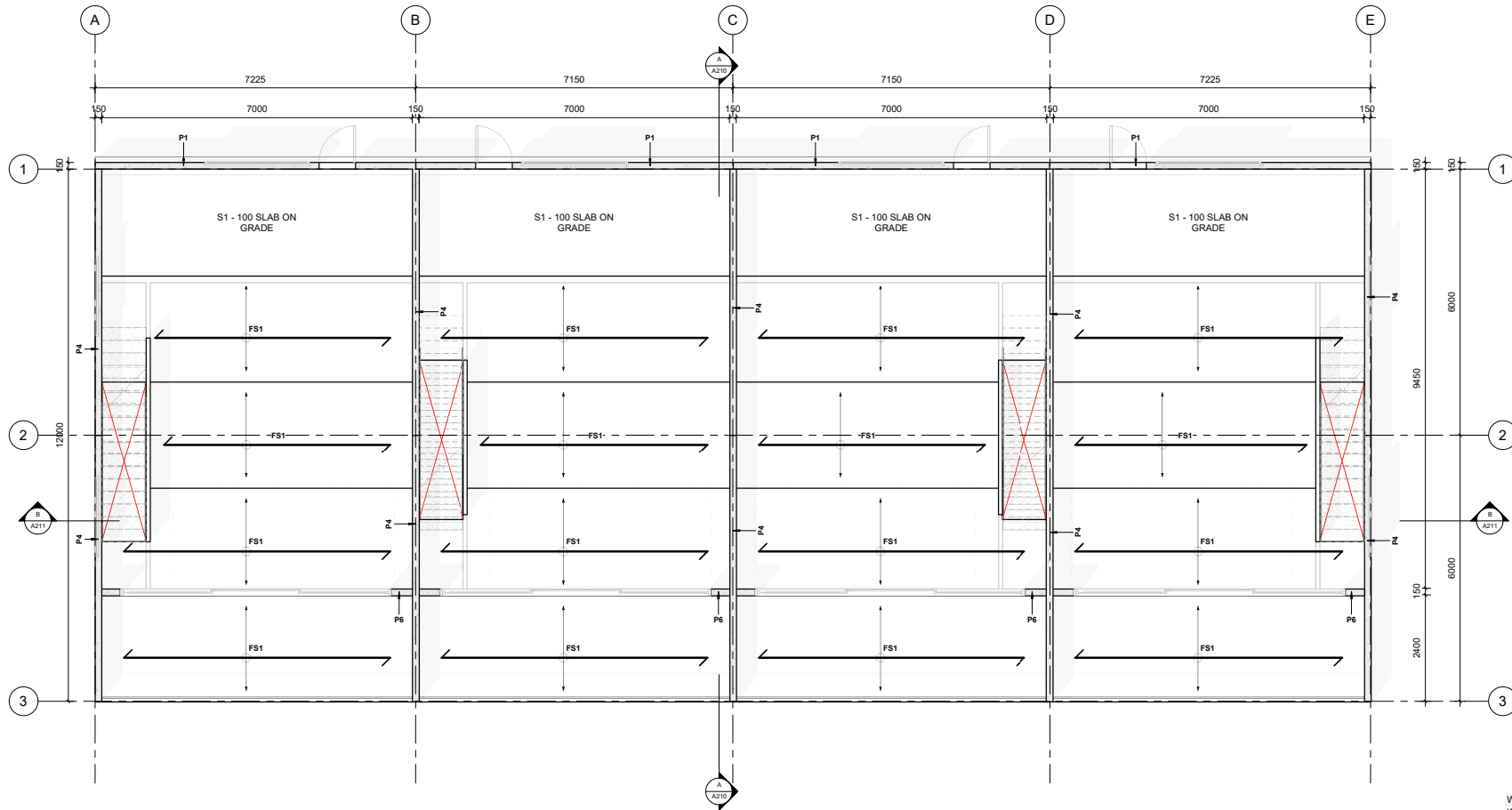
| Type Mark | Description | Count | Area |
|----------------|---|-------|--------|
| S1 | 100mm THK. 25 MPa. SLAB ON GRADE. SE62 MESH TOP, 35mm COVER. REFER DETAIL | 1 | 17 m² |
| S1 | 100mm THK. 25 MPa. SLAB ON GRADE. SE62 MESH TOP, 35mm COVER. REFER DETAIL | 1 | 200 m² |
| S1 | 100mm THK. 25 MPa. SLAB ON GRADE. SE62 MESH TOP, 35mm COVER. REFER DETAIL | 1 | 17 m² |
| S1 | 100mm THK. 25 MPa. SLAB ON GRADE. SE62 MESH TOP, 35mm COVER. REFER DETAIL | 1 | 17 m² |
| S1 | 100mm THK. 25 MPa. SLAB ON GRADE. SE62 MESH TOP, 35mm COVER. REFER DETAIL | 1 | 17 m² |
| Grand total: 5 | | | |

PRECAST PANEL SCHEDULE

| Type Mark | Description | Count |
|-----------------|--|-------|
| P1 | 150 THK PRECAST PANEL W/ DOOR & WINDOW OPENING | 4 |
| P2 | 150 THK PRECAST PANEL W/ WINDOW OPENING | 6 |
| P3 | 150 THK PRECAST PANEL - TRIANGULAR | 8 |
| P4 | 150 THK PRECAST PANEL @ GROUND FLOOR | 10 |
| P5 | 150 THK PRECAST PANEL @ UPPER FLOOR | 18 |
| P6 | 150 THK PRECAST PANEL W/ LARGE OPENING | 10 |
| P8 | 150 THK PRECAST PANEL - GARAGE DOOR | 4 |
| P9 | 150 THK PRECAST PANEL @ GARAGE LEVEL | 5 |
| P10 | 150 THK PRECAST PANEL @ FOUNDATION LEVEL | 9 |
| Grand total: 74 | | |

AMENDMENTS

| | | |
|--|--|--|
| | | |
| | | |
| | | |
| | | |
| | | |
| | | |
| | | |
| | | |
| | | |
| | | |
| | | |
| | | |
| | | |
| | | |
| | | |
| | | |
| | | |
| | | |
| | | |
| | | |
| | | |
| | | |
| | | |
| | | |
| | | |
| | | |
| | | |
| | | |
| | | |
| | | |
| | | |
| | | |
| | | |
| | | |
| | | |
| | | |
| | | |
| | | |
| | | |
| | | |
| | | |
| | | |
| | | |
| | | |
| | | |
| | | |
| | | |
| | | |
| | | |
| | | |
| | | |
| | | |
| | | |
| | | |
| | | |
| | | |
| | | |
| | | |
| | | |
| | | |
| | | |
| | | |
| | | |
| | | |
| | | |
| | | |
| | | |
| | | |
| | | |
| | | |
| | | |
| | | |
| | | |
| | | |
| | | |
| | | |
| | | |
| | | |
| | | |
| | | |
| | | |
| | | |
| | | |
| | | |
| | | |
| | | |
| | | |
| | | |
| | | |
| | | |
| | | |
| | | |
| | | |
| | | |
| | | |
| | | |
| | | |
| | | |
| | | |
| | | |
| | | |
| | | |
| | | |
| | | |
| | | |
| | | |
| | | |
| | | |
| | | |
| | | |
| | | |
| | | |
| | | |
| | | |
| | | |
| | | |
| | | |
| | | |
| | | |
| | | |
| | | |
| | | |
| | | |
| | | |
| | | |
| | | |
| | | |
| | | |
| | | |
| | | |
| | | |
| | | |
| | | |
| | | |
| | | |
| | | |
| | | |
| | | |
| | | |
| | | |
| | | |
| | | |
| | | |
| | | |
| | | |
| | | |
| | | |
| | | |
| | | |
| | | |
| | | |
| | | |
| | | |
| | | |
| | | |
| | | |
| | | |
| | | |
| | | |
| | | |
| | | |
| | | |
| | | |
| | | |
| | | |
| | | |
| | | |
| | | |
| | | |
| | | |
| | | |
| | | |
| | | |
| | | |
| | | |
| | | |
| | | |
| | | |
| | | |
| | | |
| | | |
| | | |
| | | |
| | | |
| | | |
| | | |
| | | |
| | | |
| | | |
| | | |
| | | |
| | | |
| | | |
| | | |
| | | |
| | | |
| | | |
| | | |
| | | |
| | | |
| | | |
| | | |
| | | |
| | | |
| | | |
| | | |
| | | |
| | | |
| | | |
| | | |
| | | |
| | | |
| | | |
| | | |
| | | |
| | | |
| | | |
| | | |
| | | |
| | | |
| | | |
| | | |
| | | |
| | | |
| | | |
| | | |
| | | |
| | | |
| | | |
| | | |
| | | |
| | | |
| | | |
| | | |
| | | |
| | | |
| | | |
| | | |
| | | |
| | | |
| | | |
| | | |
| | | |
| | | |
| | | |
| | | |
| | | |
| | | |
| | | |
| | | |
| | | |
| | | |
| | | |
| | | |
| | | |
| | | |
| | | |
| | | |
| | | |
| | | |
| | | |
| | | |
| | | |
| | | |
| | | |
| | | |
| | | |
| | | |
| | | |
| | | |
| | | |
| | | |
| | | |
| | | |
| | | |
| | | |
| | | |
| | | |
| | | |
| | | |
| | | |
| | | |
| | | |
| | | |
| | | |
| | | |
| | | |
| | | |
| | | |
| | | |
| | | |
| | | |
| | | |
| | | |
| | | |
| | | |
| | | |
| | | |
| | | |
| | | |
| | | |
| | | |
| | | |
| | | |
| | | |
| | | |
| | | |
| | | |
| | | |
| | | |
| | | |
| | | |
| | | |
| | | |
| | | |
| | | |
| | | |
| | | |
| | | |
| | | |
| | | |
| | | |
| | | |
| | | |
| | | |
| | | |
| | | |
| | | |
| | | |
| | | |
| | | |
| | | |
| | | |
| | | |
| | | |
| | | |
| | | |
| | | |
| | | |
| | | |
| | | |
| | | |
| | | |
| | | |
| | | |
| | | |
| | | |
| | | |
| | | |
| | | |
| | | |
| | | |
| | | |
| | | |
| | | |
| | | |
| | | |
| | | |
| | | |
| | | |
| | | |
| | | |
| | | |
| | | |
| | | |
| | | |
| | | |
| | | |
| | | |
| | | |
| | | |
| | | |
| | | |
| | | |
| | | |
| | | |
| | | |
| | | |
| | | |
| | | |
| | | |
| | | |
| | | |
| | | |
| | | |
| | | |
| | | |
| | | |
| | | |
| | | |
| | | |
| | | |
| | | |
| | | |
| | | |
| | | |
| | | |
| | | |
| | | |
| | | |
| | | |
| | | |
| | | |
| | | |
| | | |
| | | |
| | | |
| | | |
| | | |
| | | |
| | | |
| | | |
| | | |
| | | |
| | | |
| | | |
| | | |
| | | |
| | | |
| | | |
| | | |
| | | |
| | | |
| | | |
| | | |
| | | |
| | | |
| | | |
| | | |
| | | |
| | | |
| | | |
| | | |
| | | |
| | | |
| | | |
| | | |
| | | |
| | | |
| | | |
| | | |
| | | |
| | | |
| | | |
| | | |
| | | |
| | | |
| | | |
| | | |
| | | |
| | | |
| | | |
| | | |



1 Ground Floor GA Plan
1: 50 at A1 1: 100 at A3

MATERIAL TAKE-OFF AND QUANTITIES DISCLAIMER:

THE QUANTITIES PROVIDED ARE PRELIMINARY ESTIMATES GENERATED USING THE CURRENT REVIT MODEL. THESE ARE ESTIMATES ONLY AND ARE SUBJECT TO CHANGE AND ARE INTENDED FOR GENERAL REFERENCE PURPOSES ONLY. THEY DO NOT ACCOUNT FOR CONSTRUCTION TOLERANCES, VARIATIONS IN MATERIAL SUPPLY, OR ANY MODIFICATIONS DURING THE PROJECT LIFECYCLE.

IT IS THE RESPONSIBILITY OF THE CONTRACTOR AND OTHER RELEVANT STAKEHOLDERS TO PERFORM A DETAILED TAKE-OFF AND VERIFICATION OF QUANTITIES PRIOR TO PROCUREMENT OR EXECUTION. THE AUTHORS OF THIS DOCUMENT SHALL NOT BE HELD LIABLE FOR ANY DISCREPANCIES, COSTS, OR CLAIMS ARISING FROM RELIANCE ON THESE ESTIMATES.

FLATSLAB FLOOR SCHEDULE

| Type Mark | Description | Count |
|-----------------|---|-------|
| FS1 | 150mm THK FLATSLAB PANELS WITH 100mm THK TOPPING SLAB | 46 |
| Grand total: 46 | | |

PRECAST PANEL SCHEDULE

| Type Mark | Description | Count |
|-----------------|--|-------|
| P1 | 150 THK PRECAST PANEL W/ DOOR & WINDOW OPENING | 4 |
| P2 | 150 THK PRECAST PANEL W/ WINDOW OPENING | 6 |
| P3 | 150 THK PRECAST PANEL - TRIANGULAR | 8 |
| P4 | 150 THK PRECAST PANEL @ GROUND FLOOR | 10 |
| P5 | 150 THK PRECAST PANEL @ UPPER FLOOR | 18 |
| P6 | 150 THK PRECAST PANEL W/ LARGE OPENING | 10 |
| P8 | 150 THK PRECAST PANEL - GARAGE DOOR | 4 |
| P9 | 150 THK PRECAST PANEL @ GARAGE LEVEL | 5 |
| P10 | 150 THK PRECAST PANEL @ FOUNDATION LEVEL | 9 |
| Grand total: 74 | | |

DOOR SCHEDULE

| Type Mark | Family | Count | Height | Width |
|-----------|----------------------------------|-------|--------|-------|
| 84 | Single-Flush | 8 | 2300 | 820 |
| 91 | Three_Panel_Sliding_Door_17534 | 10 | 2500 | 6000 |
| D11 | 4555_Sectional garage door_Basic | 4 | 2300 | 4800 |

STRUCTURAL SLAB SCHEDULE

| Type Mark | Description | Count | Area |
|----------------|---|-------|--------|
| S1 | 100mm THK, 25 MPa, SLAB ON GRADE. SE62 MESH TOP, 35mm COVER. REFER DETAIL | 1 | 17 m² |
| S1 | 100mm THK, 25 MPa, SLAB ON GRADE. SE62 MESH TOP, 35mm COVER. REFER DETAIL | 1 | 200 m² |
| S1 | 100mm THK, 25 MPa, SLAB ON GRADE. SE62 MESH TOP, 35mm COVER. REFER DETAIL | 1 | 17 m² |
| S1 | 100mm THK, 25 MPa, SLAB ON GRADE. SE62 MESH TOP, 35mm COVER. REFER DETAIL | 1 | 17 m² |
| S1 | 100mm THK, 25 MPa, SLAB ON GRADE. SE62 MESH TOP, 35mm COVER. REFER DETAIL | 1 | 17 m² |
| Grand total: 5 | | | |

Window Schedule

| Mark | Count | Height | Width |
|-----------------|-------|--------|-------|
| W240 | 1 | 1200 | 2400 |
| W257 | 1 | 1200 | 2400 |
| W258 | 1 | 1200 | 2400 |
| W259 | 1 | 1200 | 2400 |
| W260 | 1 | 1200 | 2400 |
| W261 | 1 | 1200 | 2400 |
| W262 | 1 | 1200 | 2400 |
| W263 | 1 | 1200 | 2400 |
| W264 | 1 | 1200 | 2400 |
| W265 | 1 | 1200 | 2400 |
| W266 | 1 | 1200 | 1800 |
| W267 | 1 | 1200 | 1800 |
| W270 | 1 | 1200 | 1800 |
| W271 | 1 | 1200 | 1800 |
| W272 | 1 | 1200 | 900 |
| W273 | 1 | 1200 | 900 |
| W274 | 1 | 1200 | 1800 |
| W275 | 1 | 1200 | 1800 |
| W276 | 1 | 1200 | 1800 |
| W277 | 1 | 1200 | 1800 |
| W278 | 1 | 1200 | 900 |
| W279 | 1 | 1200 | 900 |
| Grand total: 22 | | | |

AMENDMENTS

| 1 | DATE | SCHEMATIC DESIGN |
|-----------------------|------|--|
| REV | DATE | DESCRIPTION |
| 20/12/2024 1:31:15 pm | | C:\Users\OEM\The Structural Firm\The Structural Firm - Documents\Projects\SF24075_Multi-Unit Development\Drawings\1. The Structural Firm\CAD\SF24075_AR_R24_Multi Unit Development REV 2.rvt |



THE STRUCTURAL FIRM
CHARTERED ENGINEERS

A: LEVEL 2, 32 REES ST, QUEENSTOWN
E: helo@thestructuralfirm.co.nz

M: PO BOX 2115, WAKATIPU
W: www.thestructuralfirm.co.nz

DO NOT SCALE. DO NOT USE FOR SETOUT. THE CONTRACTOR IS TO VERIFY ALL DIMENSIONS, ANGLES, SITE MEASUREMENTS & CONDITIONS, ETC BEFORE FABRICATION OR CONSTRUCTION BEGINS.

ALL RIGHTS RESERVED. COPYRIGHT OF THESE DRAWINGS REMAINS WITH THE STRUCTURAL FIRM. REPRODUCTION AND COPYING OF THESE DRAWINGS IN ANY FORM IS STRICTLY PROHIBITED.



CLIENT
BOWEN PEAK LTD

PROJECT
PROPOSED MULTI-UNIT DEVELOPMENT

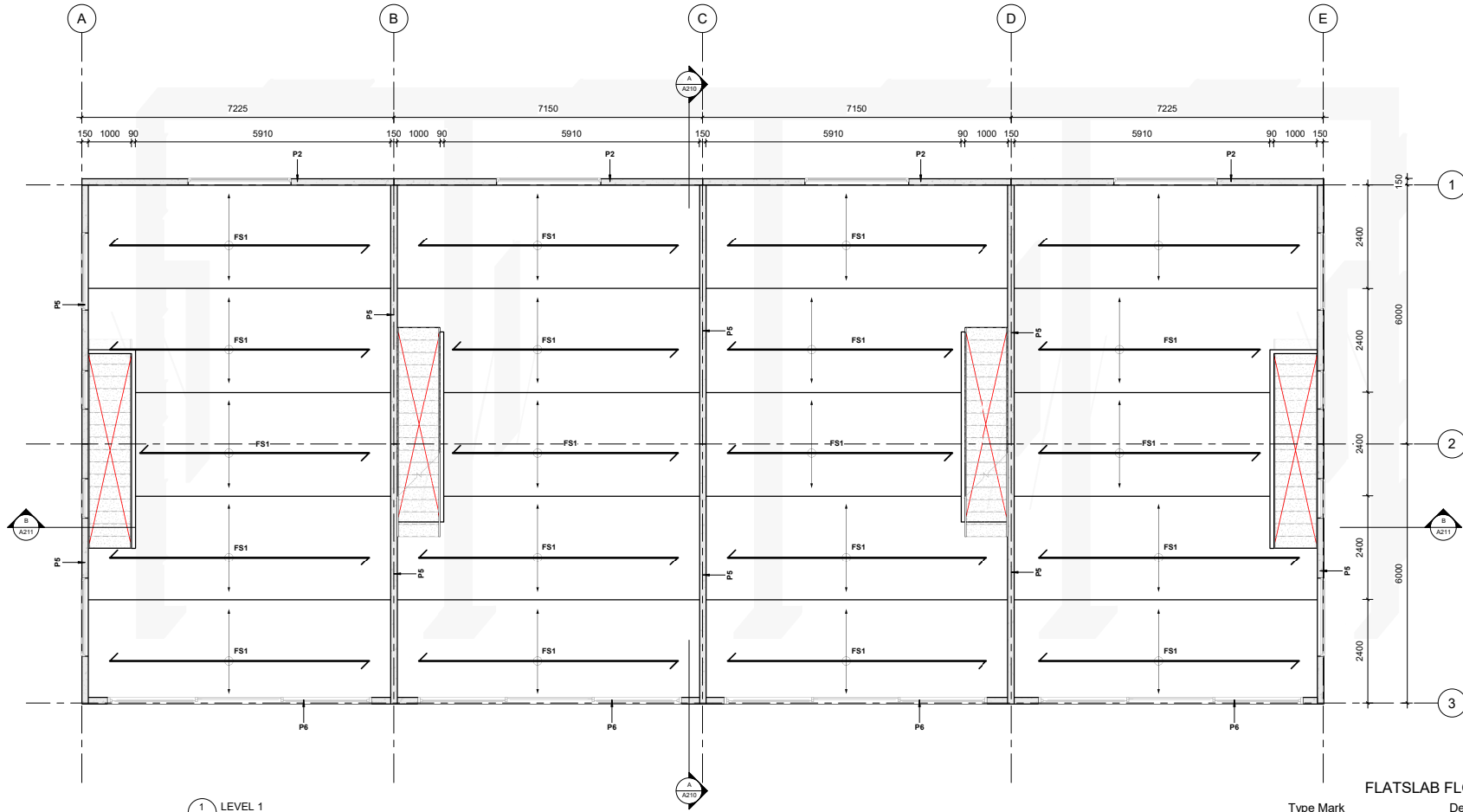
DRAWING
GROUND FLOOR PLAN

DRAWN
D. PENILO
SCALE: 1: 50 @ A1

CHECKED
D. PENILO
DATE:

PROJECT NUMBER
SF24075
DRAWING NUMBER
A102

REV
1



1 LEVEL 1
1: 50 at A1 1: 100 at A3

FLATSLAB FLOOR SCHEDULE

| Type Mark | Description | Count |
|-----------------|---|-------|
| FS1 | 150mm THK FLATSLAB PANELS WITH 100mm THK TOPPING SLAB | 46 |
| Grand total: 46 | | |

PRECAST PANEL SCHEDULE

| Type Mark | Description | Count |
|-----------------|--|-------|
| P1 | 150 THK PRECAST PANEL W/ DOOR & WINDOW OPENING | 4 |
| P2 | 150 THK PRECAST PANEL W/ WINDOW OPENING | 6 |
| P3 | 150 THK PRECAST PANEL - TRIANGULAR | 8 |
| P4 | 150 THK PRECAST PANEL @ GROUND FLOOR | 10 |
| P5 | 150 THK PRECAST PANEL @ UPPER FLOOR | 18 |
| P6 | 150 THK PRECAST PANEL W/ LARGE OPENING | 10 |
| P8 | 150 THK PRECAST PANEL - GARAGE DOOR | 4 |
| P9 | 150 THK PRECAST PANEL @ GARAGE LEVEL | 5 |
| P10 | 150 THK PRECAST PANEL @ FOUNDATION LEVEL | 9 |
| Grand total: 74 | | |

MATERIAL TAKE-OFF AND QUANTITIES DISCLAIMER:

THE QUANTITIES PROVIDED ARE PRELIMINARY ESTIMATES GENERATED USING THE CURRENT REVIT MODEL. THESE ARE ESTIMATES ONLY AND ARE SUBJECT TO CHANGE AND ARE INTENDED FOR GENERAL REFERENCE PURPOSES ONLY. THEY DO NOT ACCOUNT FOR CONSTRUCTION TOLERANCES, VARIATIONS IN MATERIAL SUPPLY, OR ANY MODIFICATIONS DURING THE PROJECT LIFECYCLE.

IT IS THE RESPONSIBILITY OF THE CONTRACTOR AND OTHER RELEVANT STAKEHOLDERS TO PERFORM A DETAILED TAKE-OFF AND VERIFICATION OF QUANTITIES PRIOR TO PROCUREMENT OR EXECUTION. THE AUTHORS OF THIS DOCUMENT SHALL NOT BE HELD LIABLE FOR ANY DISCREPANCIES, COSTS, OR CLAIMS ARISING FROM RELIANCE ON THESE ESTIMATES.

AMENDMENTS

| 1 | DATE | SCHEMATIC DESIGN |
|-----------------------|------|--|
| REV | DATE | DESCRIPTION |
| 20/12/2024 1:31:16 pm | | C:\Users\OEM\The Structural Firm\The Structural Firm - Documents\Projects\SF24075_Multi-Unit Development\Drawings\1. The Structural Firm\CAD\SF24075_AR_R24_Multi Unit Development REV 2.rvt |



THE STRUCTURAL FIRM
CHARTERED ENGINEERS

A: LEVEL 2, 32 REES ST, QUEENSTOWN
E: helo@thestructuralfirm.co.nz

M: PO BOX 2115, WAKATIPU
W: www.thestructuralfirm.co.nz

DO NOT SCALE. DO NOT USE FOR SETOUT. THE CONTRACTOR IS TO VERIFY ALL DIMENSIONS, ANGLES, SITE MEASUREMENTS & CONDITIONS, ETC BEFORE FABRICATION OR CONSTRUCTION BEGINS.

ALL RIGHTS RESERVED. COPYRIGHT OF THESE DRAWINGS REMAINS WITH THE STRUCTURAL FIRM. REPRODUCTION AND COPYING OF THESE DRAWINGS IN ANY FORM IS STRICTLY PROHIBITED.

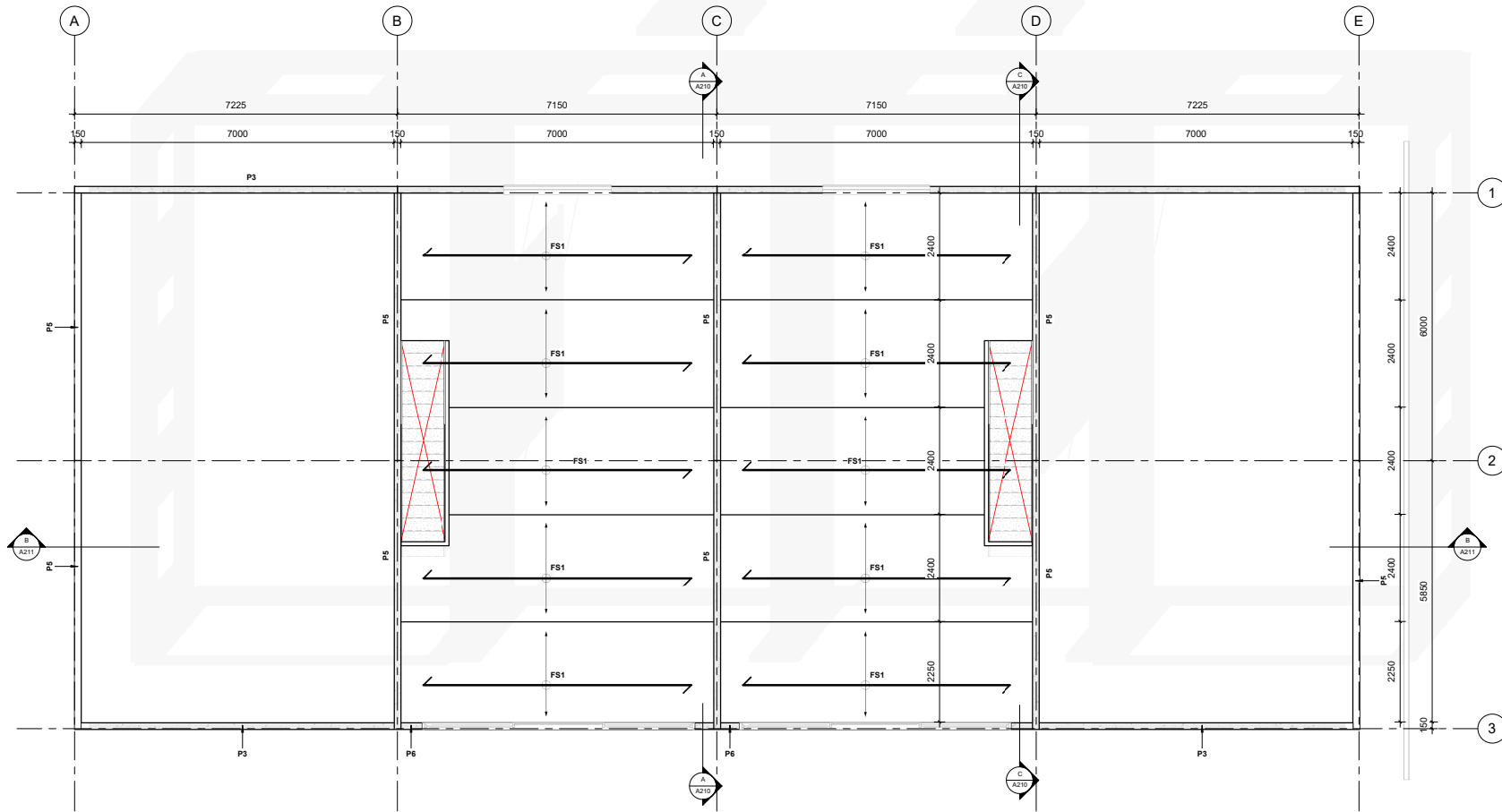


CLIENT
BOWEN PEAK LTD

PROJECT
PROPOSED MULTI-UNIT DEVELOPMENT

DRAWING
LEVEL 1 PLAN

DRAWN: D. PENILO
CHECKED: D. PENILO
DATE: @ A1
PROJECT NUMBER: SF24075
DRAWING NUMBER: A103
REV: 1



2 LEVEL 2 PLAN
1: 50 at A1 1: 100 at A3

MATERIAL TAKE-OFF AND QUANTITIES DISCLAIMER:

THE QUANTITIES PROVIDED ARE PRELIMINARY ESTIMATES GENERATED USING THE CURRENT REVIT MODEL. THESE ARE ESTIMATES ONLY AND ARE SUBJECT TO CHANGE AND ARE INTENDED FOR GENERAL REFERENCE PURPOSES ONLY. THEY DO NOT ACCOUNT FOR CONSTRUCTION TOLERANCES, VARIATIONS IN MATERIAL SUPPLY, OR ANY MODIFICATIONS DURING THE PROJECT LIFECYCLE.

IT IS THE RESPONSIBILITY OF THE CONTRACTOR AND OTHER RELEVANT STAKEHOLDERS TO PERFORM A DETAILED TAKE-OFF AND VERIFICATION OF QUANTITIES PRIOR TO PROCUREMENT OR EXECUTION. THE AUTHORS OF THIS DOCUMENT SHALL NOT BE HELD LIABLE FOR ANY DISCREPANCIES, COSTS, OR CLAIMS ARISING FROM RELIANCE ON THESE ESTIMATES.

FLATSLAB FLOOR SCHEDULE

| Type Mark | Description | Count |
|-----------------|---|-------|
| FS1 | 150mm THK FLATSLAB PANELS WITH 100mm THK TOPPING SLAB | 46 |
| Grand total: 46 | | |

PRECAST PANEL SCHEDULE

| Type Mark | Description | Count |
|-----------------|--|-------|
| P1 | 150 THK PRECAST PANEL W/ DOOR & WINDOW OPENING | 4 |
| P2 | 150 THK PRECAST PANEL W/ WINDOW OPENING | 6 |
| P3 | 150 THK PRECAST PANEL - TRIANGULAR | 9 |
| P4 | 150 THK PRECAST PANEL @ GROUND FLOOR | 10 |
| P5 | 150 THK PRECAST PANEL @ UPPER FLOOR | 18 |
| P6 | 150 THK PRECAST PANEL W/ LARGE OPENING | 10 |
| P8 | 150 THK PRECAST PANEL - GARAGE DOOR | 4 |
| P9 | 150 THK PRECAST PANEL @ GARAGE LEVEL | 5 |
| P10 | 150 THK PRECAST PANEL @ FOUNDATION LEVEL | 9 |
| Grand total: 74 | | |

AMENDMENTS

| 1 | DATE | DESCRIPTION |
|-----|------|-------------|
| REV | | |



THE STRUCTURAL FIRM
CHARTERED ENGINEERS

A: LEVEL 2, 32 REES ST, QUEENSTOWN
E: helo@thestructuralfirm.co.nz

M: PO BOX 2115, WAKATIPU
W: www.thestructuralfirm.co.nz

DO NOT SCALE. DO NOT USE FOR SETOUT. THE CONTRACTOR IS TO VERIFY ALL DIMENSIONS, ANGLES, SITE MEASUREMENTS & CONDITIONS, ETC BEFORE FABRICATION OR CONSTRUCTION BEGINS.

ALL RIGHTS RESERVED. COPYRIGHT OF THESE DRAWINGS REMAINS WITH THE STRUCTURAL FIRM. REPRODUCTION AND COPYING OF THESE DRAWINGS IN ANY FORM IS STRICTLY PROHIBITED.



CLIENT
BOWEN PEAK LTD

PROJECT
PROPOSED MULTI-UNIT DEVELOPMENT

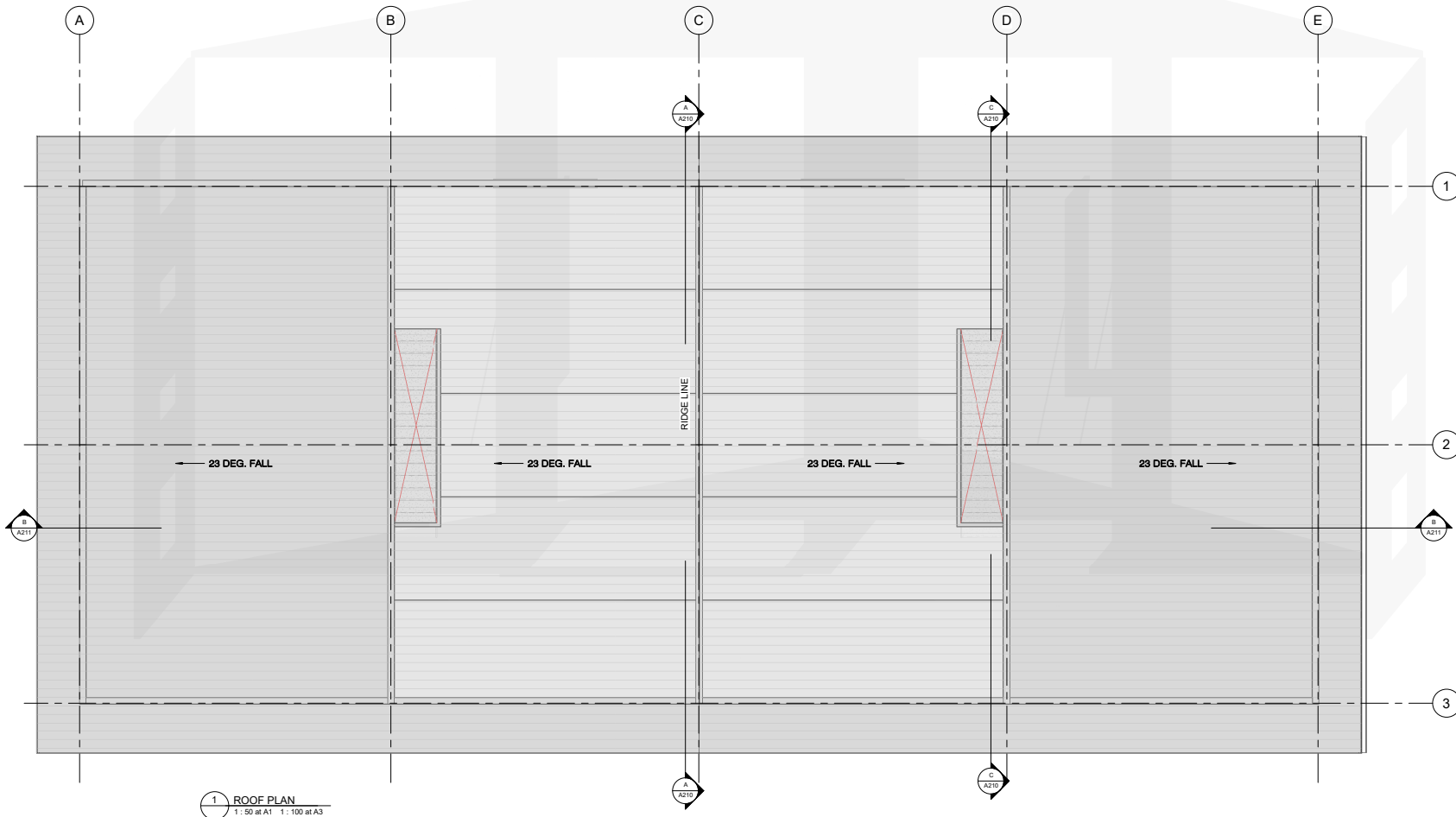
DRAWING
LEVEL 2 PLAN

DRAWN
D. PENILO
SCALE: 1: 50 @ A1

CHECKED:
D. PENILO
DATE:

PROJECT NUMBER
SF24075
DRAWING NUMBER
A104

REV
1



MATERIAL TAKE-OFF AND QUANTITIES DISCLAIMER:

THE QUANTITIES PROVIDED ARE PRELIMINARY ESTIMATES GENERATED USING THE CURRENT REVIT MODEL. THESE ARE ESTIMATES ONLY AND ARE SUBJECT TO CHANGE AND ARE INTENDED FOR GENERAL REFERENCE PURPOSES ONLY. THEY DO NOT ACCOUNT FOR CONSTRUCTION TOLERANCES, VARIATIONS IN MATERIAL SUPPLY, OR ANY MODIFICATIONS DURING THE PROJECT LIFECYCLE.

IT IS THE RESPONSIBILITY OF THE CONTRACTOR AND OTHER RELEVANT STAKEHOLDERS TO PERFORM A DETAILED TAKE-OFF AND VERIFICATION OF QUANTITIES PRIOR TO PROCUREMENT OR EXECUTION. THE AUTHORS OF THIS DOCUMENT SHALL NOT BE HELD LIABLE FOR ANY DISCREPANCIES, COSTS, OR CLAIMS ARISING FROM RELIANCE ON THESE ESTIMATES.

| ROOF SCHEDULE | | |
|---------------|-------------|--------|
| Type Mark | Description | Area |
| ROOF | MAIN ROOF | 477 m² |

| AMENDMENTS | | |
|------------|------|------------------|
| 1 | DATE | DESCRIPTION |
| 1 | | SCHEMATIC DESIGN |

20/12/2024 1:31:17 pm C:\Users\OEM\The Structural Firm\The Structural Firm - Documents\Projects\SF24000s\SF24075_Multi-Unit Development\Drawings\1. The Structural Firm\CAD\SF24075_AR_R24_Multi Unit Development REV 2.rvt



THE STRUCTURAL FIRM

CHARTERED ENGINEERS

A: LEVEL 2, 32 REES ST, QUEENSTOWN

E: helo@thestructuralfirm.co.nz

M: PO BOX 2115, WAKATIPU

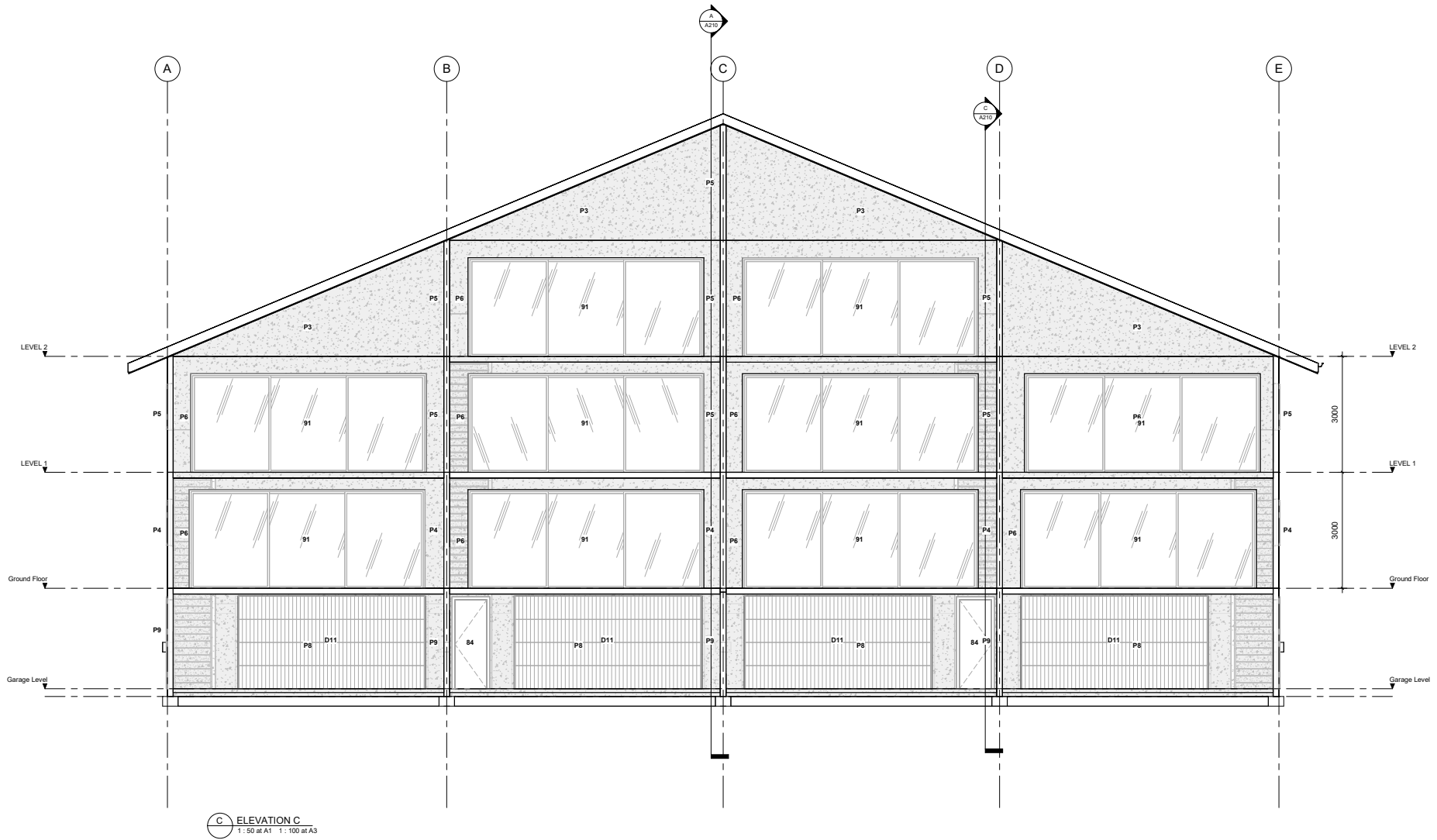
W: www.thestructuralfirm.co.nz

DO NOT SCALE. DO NOT USE FOR SETOUT. THE CONTRACTOR IS TO VERIFY ALL DIMENSIONS, ANGLES, SITE MEASUREMENTS & CONDITIONS, ETC BEFORE FABRICATION OR CONSTRUCTION BEGINS.

ALL RIGHTS RESERVED. COPYRIGHT OF THESE DRAWINGS REMAINS WITH THE STRUCTURAL FIRM. REPRODUCTION AND COPYING OF THESE DRAWINGS IN ANY FORM IS STRICTLY PROHIBITED.



| | | | | | |
|---------------------------------|--|-----------|-----------|-----------------|------|
| CLIENT | | DRAWING | | | |
| BOWEN PEAK LTD | | ROOF PLAN | | | |
| PROJECT | | DRAWN: | CHECKED: | PROJECT NUMBER | |
| PROPOSED MULTI-UNIT DEVELOPMENT | | D. PENILO | D. PENILO | SF24075 | |
| | | SCALES: | DATE: | DRAWING NUMBER: | REV. |
| | | 1 : 50 | @ A1 | A105 | 1 |



| AMENDMENTS | | |
|---|------|------------------|
| 1 | DATE | SCHEMATIC DESIGN |
| REV | DATE | DESCRIPTION |
| 20/12/2024 1:31:18 pm C:\Users\OEM\The Structural Firm\The Structural Firm - Documents\Projects\SF24000s\SF24075_Multi-Unit Development\Drawings\1. The Structural Firm\CAD\SF24075_AR_R24_Multi Unit Development REV 2.rvt | | |



THE STRUCTURAL FIRM
CHARTERED ENGINEERS

A: LEVEL 2, 32 REES ST, QUEENSTOWN
E: hello@thestructuralfirm.co.nz

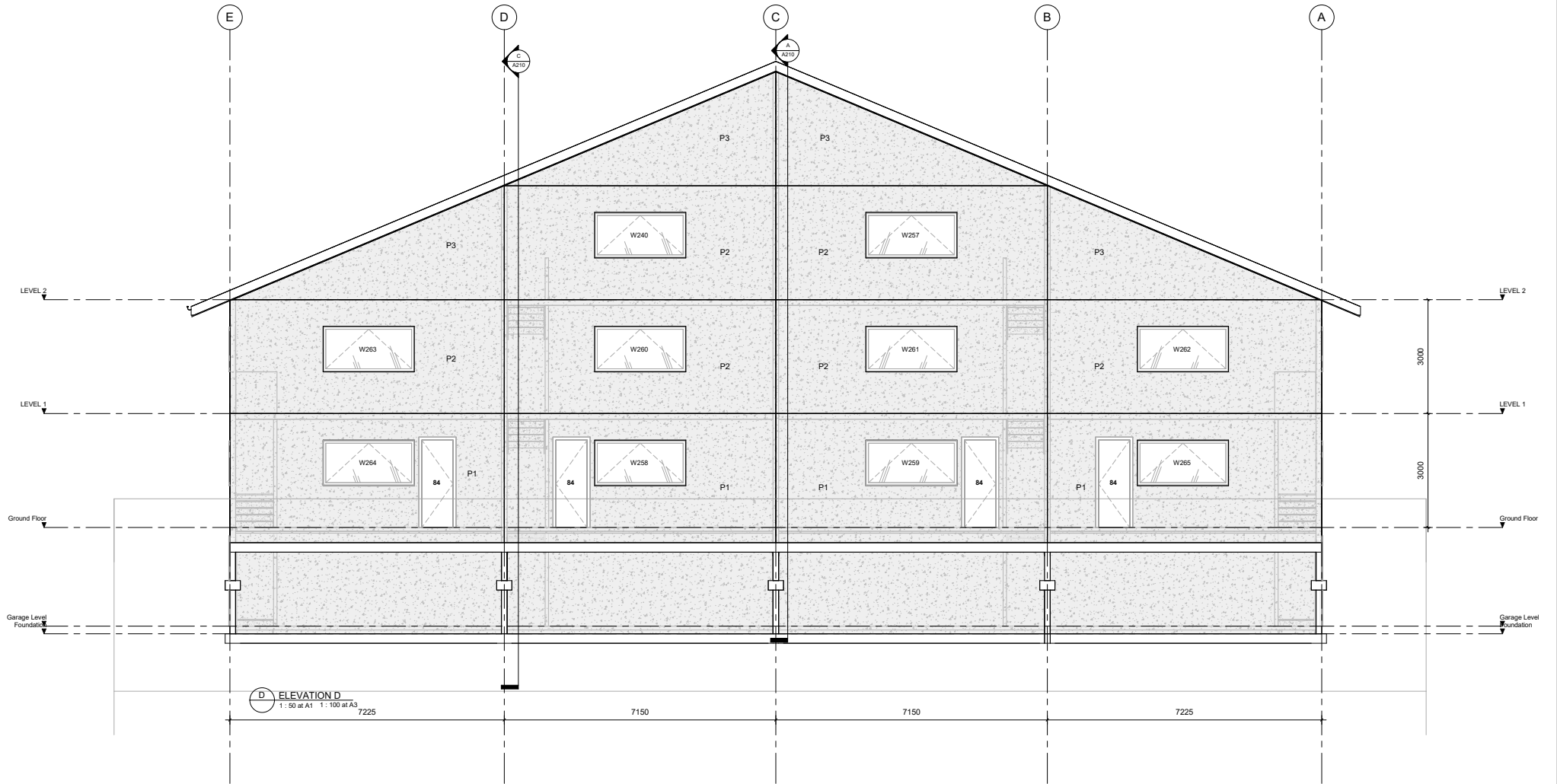
M: PO BOX 2115, WAKATIPU
W: www.thestructuralfirm.co.nz

DO NOT SCALE. DO NOT USE FOR SETOUT. THE CONTRACTOR IS TO VERIFY ALL DIMENSIONS, ANGLES, SITE MEASUREMENTS & CONDITIONS, ETC BEFORE FABRICATION OR CONSTRUCTION BEGINS.

ALL RIGHTS RESERVED. COPYRIGHT OF THESE DRAWINGS REMAINS WITH THE STRUCTURAL FIRM. REPRODUCTION AND COPYING OF THESE DRAWINGS IN ANY FORM IS STRICTLY PROHIBITED.



| CLIENT | | DRAWING ELEVATIONS | |
|---------------------------------|--|--------------------|--|
| BOWEN PEAK LTD | | | |
| PROJECT | | PROJECT NUMBER | |
| PROPOSED MULTI-UNIT DEVELOPMENT | | SF24075 | |
| DRAWN | | CHECKED | |
| D. PENILO | | D. PENILO | |
| SCALE | | DATE | |
| 1:50 @ A1 | | | |
| DRAWING NUMBER | | REV | |
| A201 | | 1 | |



| AMENDMENTS | | |
|-----------------------|------|--|
| 1 | DATE | SCHEMATIC DESIGN |
| REV | DATE | DESCRIPTION |
| 20/12/2024 1:31:18 pm | | C:\Users\OEM\The Structural Firm\The Structural Firm - Documents\Projects\SF24075_Multi-Unit Development\Drawings\1. The Structural Firm\CAD\SF24075_AR_R24_Multi Unit Development REV 2.rvt |



THE STRUCTURAL FIRM
CHARTERED ENGINEERS

A: LEVEL 2, 32 REES ST, QUEENSTOWN
E: hello@thestructuralfirm.co.nz

M: PO BOX 2115, WAKATIPU
W: www.thestructuralfirm.co.nz

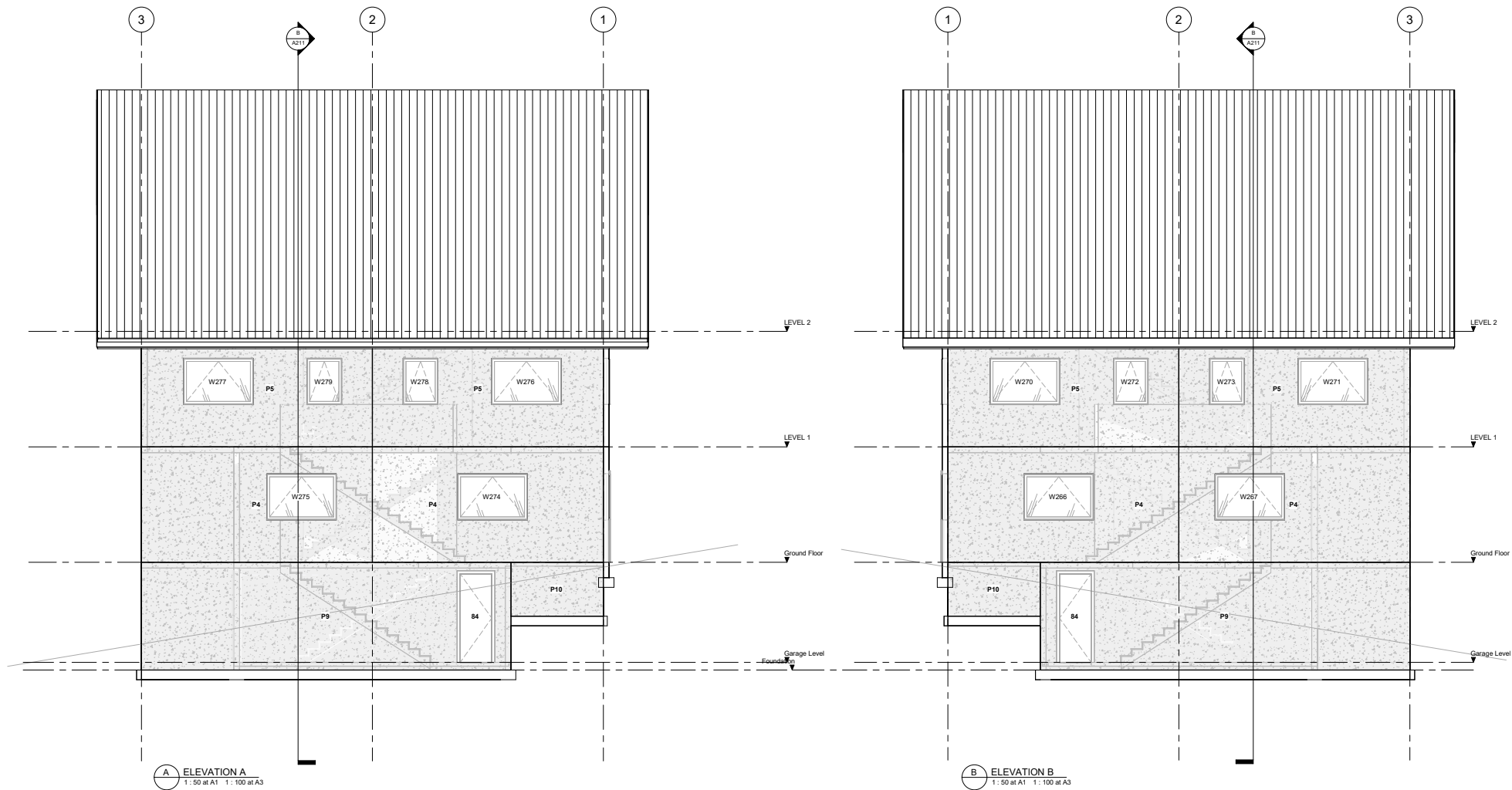
DO NOT SCALE. DO NOT USE FOR SETOUT. THE CONTRACTOR IS TO VERIFY ALL DIMENSIONS, ANGLES, SITE MEASUREMENTS & CONDITIONS, ETC BEFORE FABRICATION OR CONSTRUCTION BEGINS.

ALL RIGHTS RESERVED. COPYRIGHT OF THESE DRAWINGS REMAINS WITH THE STRUCTURAL FIRM. REPRODUCTION AND COPYING OF THESE DRAWINGS IN ANY FORM IS STRICTLY PROHIBITED.



| CLIENT | |
|---------------------------------|--|
| BOWEN PEAK LTD | |
| PROJECT | |
| PROPOSED MULTI-UNIT DEVELOPMENT | |

| DRAWING ELEVATIONS | |
|---------------------------|------------------------|
| DRAWN D. PENILO | CHECKED D. PENILO |
| SCALE 1:50 | DATE @ A1 |
| PROJECT NUMBER SF24075 | DRAWING NUMBER A202 |
| REV 1 | |



| AMENDMENTS | | |
|--|------|------------------|
| 1 | DATE | SCHEMATIC DESIGN |
| REV | DATE | DESCRIPTION |
| 20/12/2024 1:31:18 pm C:\Users\OEM\The Structural Firm\The Structural Firm - Documents\Projects\SF24075_Multi-Unit Development\Drawings\1. The Structural Firm\CAD\SF24075_AR_R24_Multi Unit Development REV 2.rvt | | |



THE STRUCTURAL FIRM
CHARTERED ENGINEERS

A: LEVEL 2, 32 REES ST, QUEENSTOWN
E: helo@thestructuralfirm.co.nz

M: PO BOX 2115, WAKATIPU
W: www.thestructuralfirm.co.nz

DO NOT SCALE. DO NOT USE FOR SETOUT. THE CONTRACTOR IS TO VERIFY ALL DIMENSIONS, ANGLES, SITE MEASUREMENTS & CONDITIONS, ETC BEFORE FABRICATION OR CONSTRUCTION BEGINS.

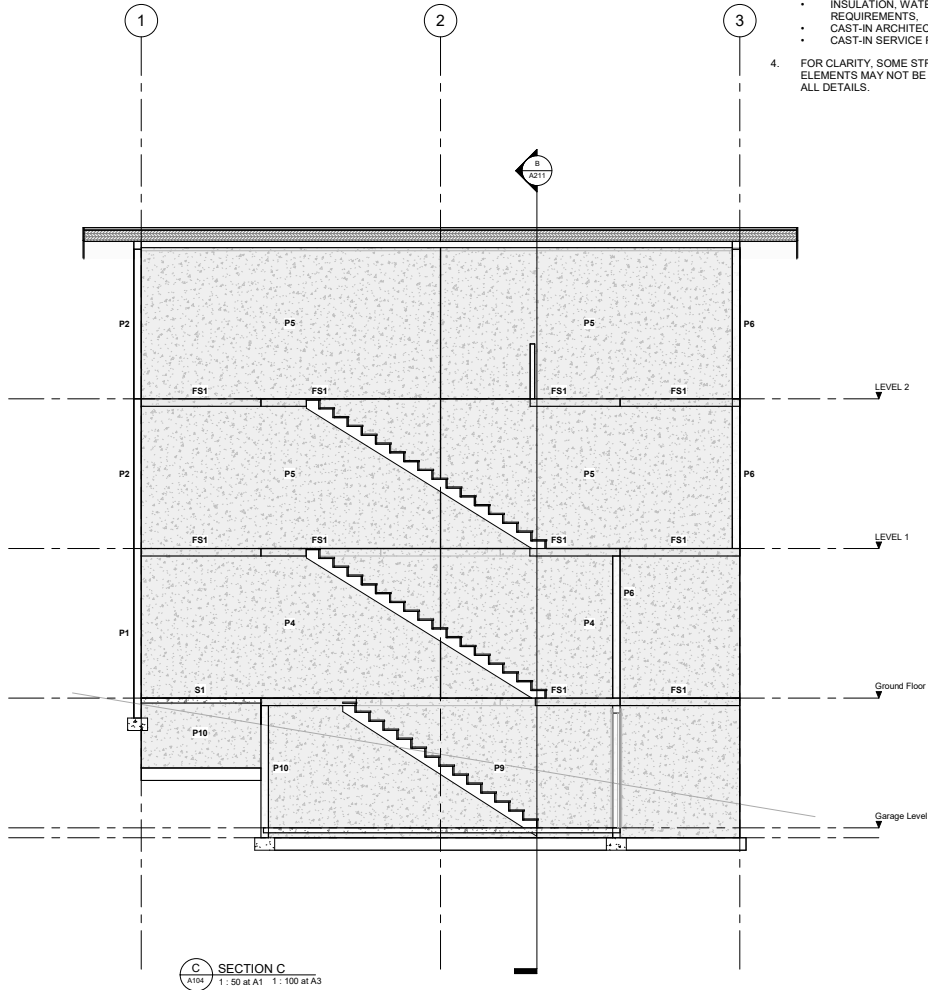
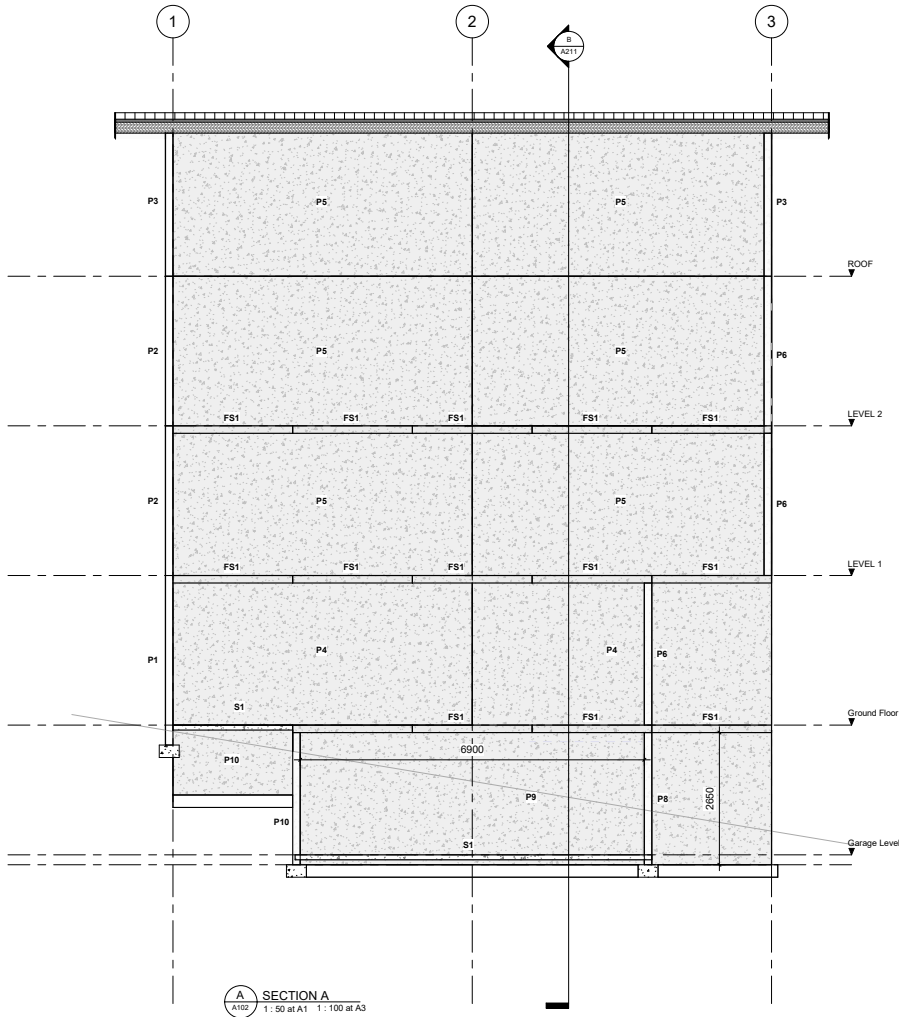
ALL RIGHTS RESERVED. COPYRIGHT OF THESE DRAWINGS REMAINS WITH THE STRUCTURAL FIRM. REPRODUCTION AND COPYING OF THESE DRAWINGS IN ANY FORM IS STRICTLY PROHIBITED.



| CLIENT | | DRAWING ELEVATIONS | |
|---------------------------------|--|--------------------|--|
| BOWEN PEAK LTD | | | |
| PROJECT | | PROJECT NUMBER | |
| PROPOSED MULTI-UNIT DEVELOPMENT | | SF24075 | |
| DRAWN | | CHECKED | |
| D. PENILO | | D. PENILO | |
| SCALE | | DATE | |
| 1: 50 @ A1 | | | |
| DRAWING NUMBER | | REV | |
| A203 | | 1 | |

GENERAL NOTES

- REFER TO SHEET S0-1 FOR MANDATORY ENGINEER INSPECTIONS.
- ALL DRAWINGS ARE TO BE READ IN CONJUNCTION WITH TYPICAL CONSTRUCTION NOTES FOUND ON SHEETS S0-1 TO S0-5.
- REFER TO ARCHITECT'S DRAWINGS FOR ALL:
 - SETOUT DIMENSIONS,
 - REDUCED LEVELS,
 - OPENING SIZES,
 - SLAB SETDOWNS, FALLS, REBATES, EDGE DETAILS,
 - INSULATION, WATERPROOFING REQUIREMENTS,
 - CAST-IN ARCHITECTURAL ITEMS
 - CAST-IN SERVICE FIXTURES.
- FOR CLARITY, SOME STRUCTURAL ELEMENTS MAY NOT BE SHOWN ON ALL DETAILS.



| AMENDMENTS | | |
|--|------|------------------|
| 1 | DATE | SCHEMATIC DESIGN |
| REV | DATE | DESCRIPTION |
| 20/12/2024 1:31:19 pm C:\Users\OEM\The Structural Firm\The Structural Firm - Documents\Projects\SF24075_Multi-Unit Development\Drawings\1. The Structural Firm\CAD\SF24075_AR_R24_Multi Unit Development REV 2.rvt | | |



THE STRUCTURAL FIRM
CHARTERED ENGINEERS

A: LEVEL 2, 32 REES ST, QUEENSTOWN
E: hello@thestructuralfirm.co.nz

M: PO BOX 2115, WAKATIPU
W: www.thestructuralfirm.co.nz

DO NOT SCALE. DO NOT USE FOR SETOUT. THE CONTRACTOR IS TO VERIFY ALL DIMENSIONS, ANGLES, SITE MEASUREMENTS & CONDITIONS, ETC BEFORE FABRICATION OR CONSTRUCTION BEGINS.

ALL RIGHTS RESERVED. COPYRIGHT OF THESE DRAWINGS REMAINS WITH THE STRUCTURAL FIRM. REPRODUCTION AND COPYING OF THESE DRAWINGS IN ANY FORM IS STRICTLY PROHIBITED.



CLIENT
BOWEN PEAK LTD

PROJECT
PROPOSED MULTI-UNIT DEVELOPMENT

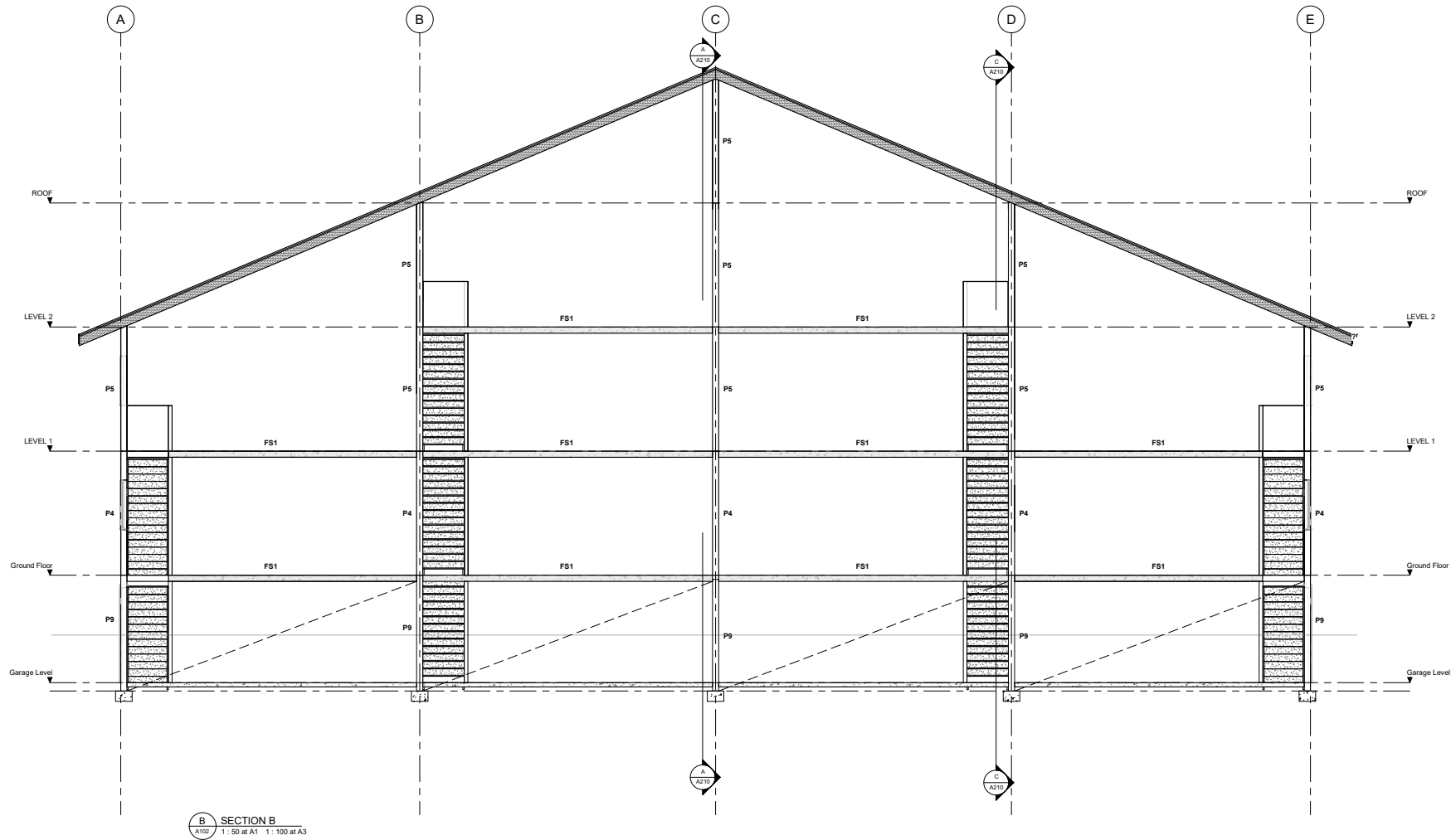
DRAWING
SECTIONS

DRAWN
D. PENILO
SCALE: 1: 50 @ A1

CHECKED
D. PENILO
DATE:

PROJECT NUMBER
SF24075
DRAWING NUMBER
A210

REV
1



| AMENDMENTS | | |
|------------|------|------------------|
| | | |
| | | |
| | | |
| | | |
| 1 | DATE | SCHEMATIC DESIGN |
| REV | DATE | DESCRIPTION |
| | | |



THE STRUCTURAL FIRM
CHARTERED ENGINEERS

A: LEVEL 2, 32 REES ST, QUEENSTOWN
E: hello@thestructuralfirm.co.nz

M: PO BOX 2115, WAKATIPU
W: www.thestructuralfirm.co.nz

DO NOT SCALE. DO NOT USE FOR SETOUT. THE CONTRACTOR IS TO VERIFY ALL DIMENSIONS, ANGLES, SITE MEASUREMENTS & CONDITIONS, ETC BEFORE FABRICATION OR CONSTRUCTION BEGINS.

ALL RIGHTS RESERVED. COPYRIGHT OF THESE DRAWINGS REMAINS WITH THE STRUCTURAL FIRM. REPRODUCTION AND COPYING OF THESE DRAWINGS IN ANY FORM IS STRICTLY PROHIBITED.



| CLIENT |
|---------------------------------|
| BOWEN PEAK LTD |
| PROJECT |
| PROPOSED MULTI-UNIT DEVELOPMENT |

| DRAWING SECTIONS | | | |
|--------------------|----------------------|---------------------------|----------|
| DRAWN D. PENILO | CHECKED D. PENILO | PROJECT NUMBER SF24075 | REV 1 |
| SCALE 1:50 | DATE @ A1 | DRAWING NUMBER A211 | |