

QUEENSTOWN CABLE CAR - DRAWINGS

CLIENT:	SOUTHERN INFRASTRUCTURE LTD	PATERSONS JOB NUMBER:	P240854							
PROJECT NAME:	QUEENSTOWN CABLE CAR	DAY	13							
		MONTH	OCT							
		YEAR	2025							
SHEET NO.	SHEET TITLE	DRAWING REVISIONS								
100	OVERVIEW	1								
100.1	OVERVIEW - WESTERN SECTION	1								
100.2	OVERVIEW - SOUTHERN SECTION	1								
100.3	OVERVIEW - EASTERN SECTION	1								
101	QUEENSTOWN STATION	1								
102	QUEENSTOWN STATION TO QUEENSTOWN HILL STATION	1								
103	QUEENSTOWN STATION TO QUEENSTOWN HILL STATION	1								
104	QUEENSTOWN STATION TO QUEENSTOWN HILL STATION	1								
105	QUEENSTOWN STATION TO QUEENSTOWN HILL STATION	1								
106	QUEENSTOWN HILL STATION	1								
107	QUEENSTOWN HILL STATION TO LAKE JOHNSON STATION	1								
108	QUEENSTOWN HILL STATION TO LAKE JOHNSON STATION	1								
109	QUEENSTOWN HILL STATION TO LAKE JOHNSON STATION	1								
110	LAKE JOHNSON STATION	1								
111	LAKE JOHNSON STATION TO FRANKTON BUS HUB STATION	1								
112	FRANKTON BUS HUB STATION TO AIRPORT STATION	1								
113	LAKE JOHNSON STATION TO FERRY HILL STATION	1								
114	FERRY HILL STATION	1								
115	FERRY HILL STATION	1								
116	FRANKTON NORTH STATION	1								
117	FRANKTON NORTH STATION TO LADIES MILE STATION	1								
118	FRANKTON NORTH STATION TO LADIES MILE STATION	1								
119	LADIES MILE STATION	1								
120	FRANKTON BUS HUB STATION	1								
121	FIVE MILE STATION	1								
122	FIVE MILE STATION	1								
123	FIVE MILE STATION TO QUAIL RISE STATION	1								
124	QUAIL RISE STATION	1								
125	QUAIL RISE STATION	1								
126	LOWER SHOTOVER STATION	1								
127	LADIES MILE STATION	1								
DISTRIBUTION:		NUMBER OF COPIES								
SOUTHERN INFRASTRUCTURE LTD		1								
REASONS FOR ISSUE:		P								
DRAWING SIZE:		A3								
MEDIA:		PDF								
A = APPROVAL      D = DESIGN      X = PRICING      I = INFORMATION      P = PRELIMINARY C = CONSTRUCTION      T = TENDER      Y = CONSENT      R = REQUESTED      E = DXF OR DWG										

CLIENT

SOUTHERN INFRASTRUCTURE LTD  
QUEENSTOWN

DRAWING TITLE

QUEENSTOWN CABLE CAR  
INDEX SHEET

DATUM INFORMATION

COORDINATE SYSTEM      NZGD 2000  
MOUNT NICHOLAS CIRCUIT  
DATUM      NZVD 2016  
ORIGIN OF COORDINATES  
ORIGIN OF LEVELS

REV    DRAWN

1      AJH

DATE

13.10.2025

NOTE

STATUS

DRAFT

SURVEYED

DESIGNED

DRAWN

REVIEWED

APPROVED

PAT

AJH

AJH

SJP

2024/2025

10.02.2025

13.10.2025

14.10.2025

PROJECT

DRAWING NO

SHEET

REVISION

SCALE (A3)

P240854

001

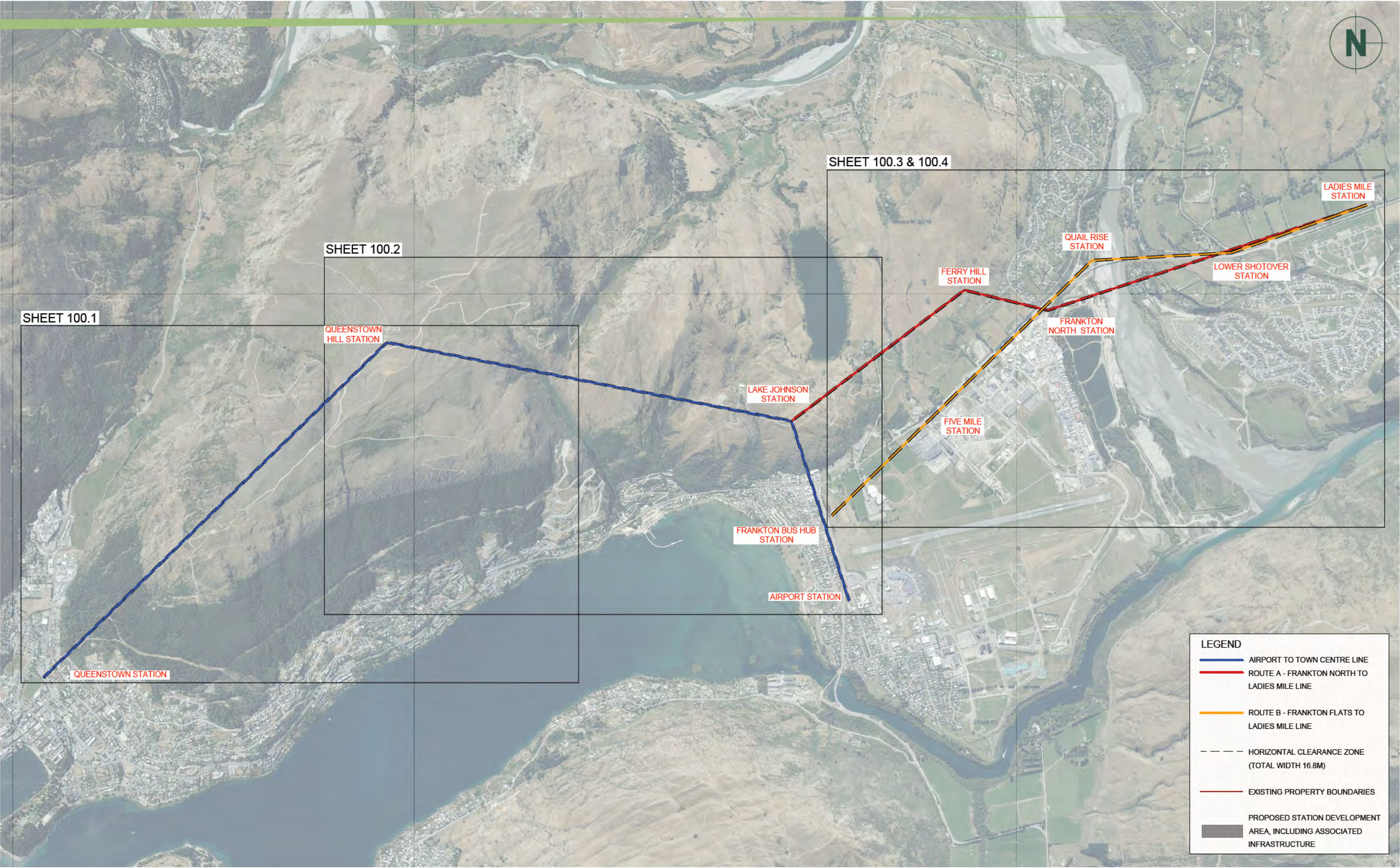
001

1

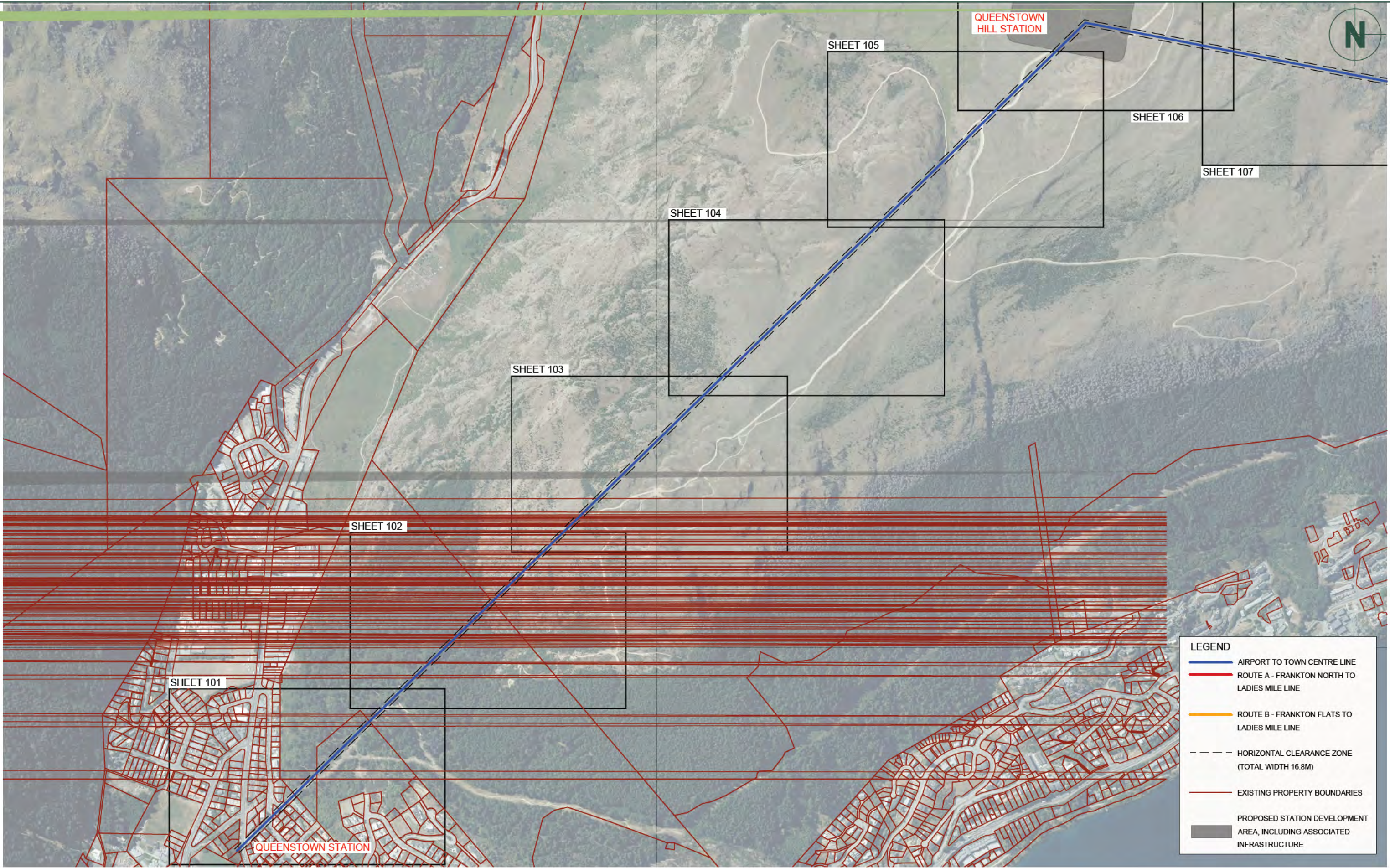
N/A



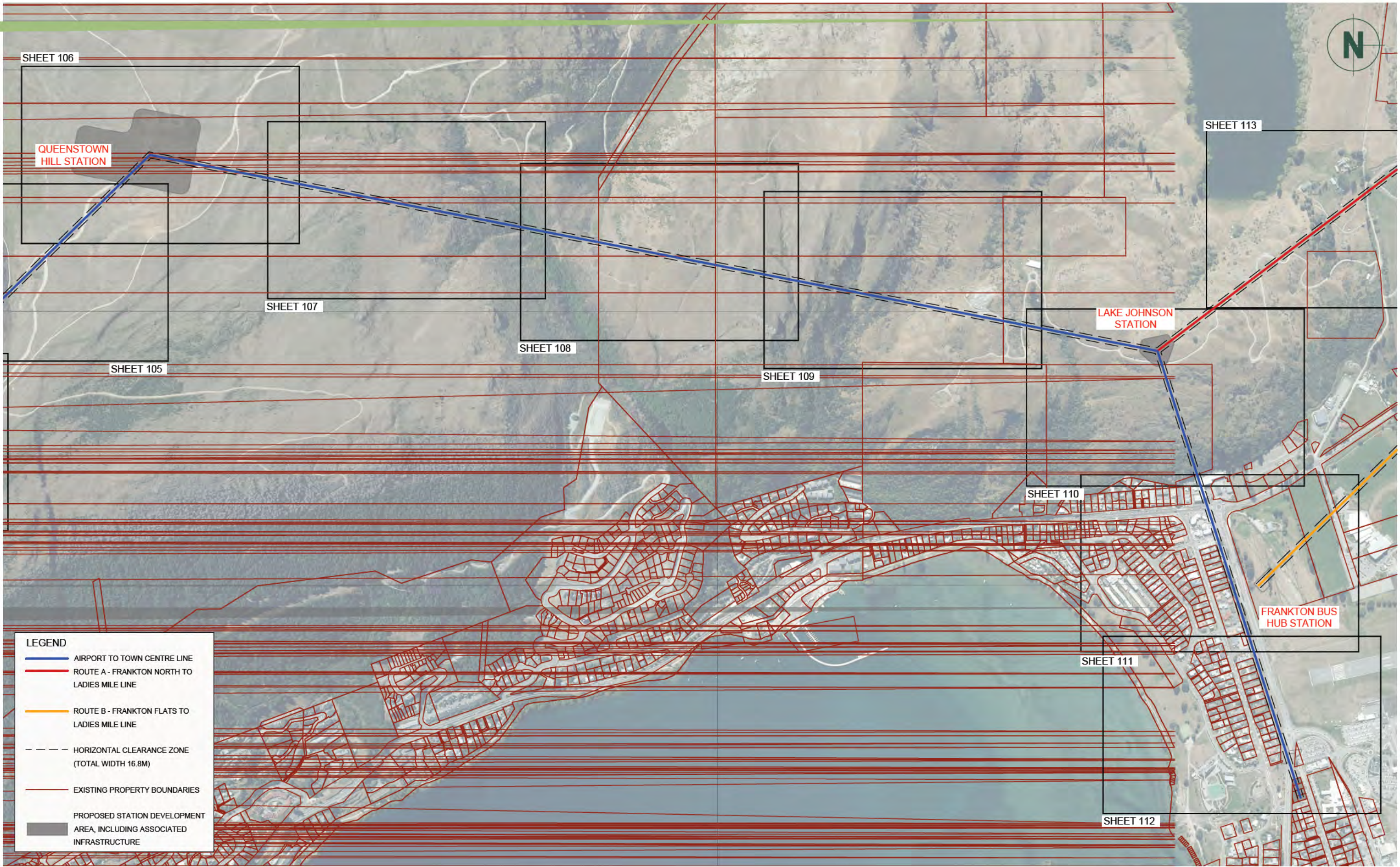




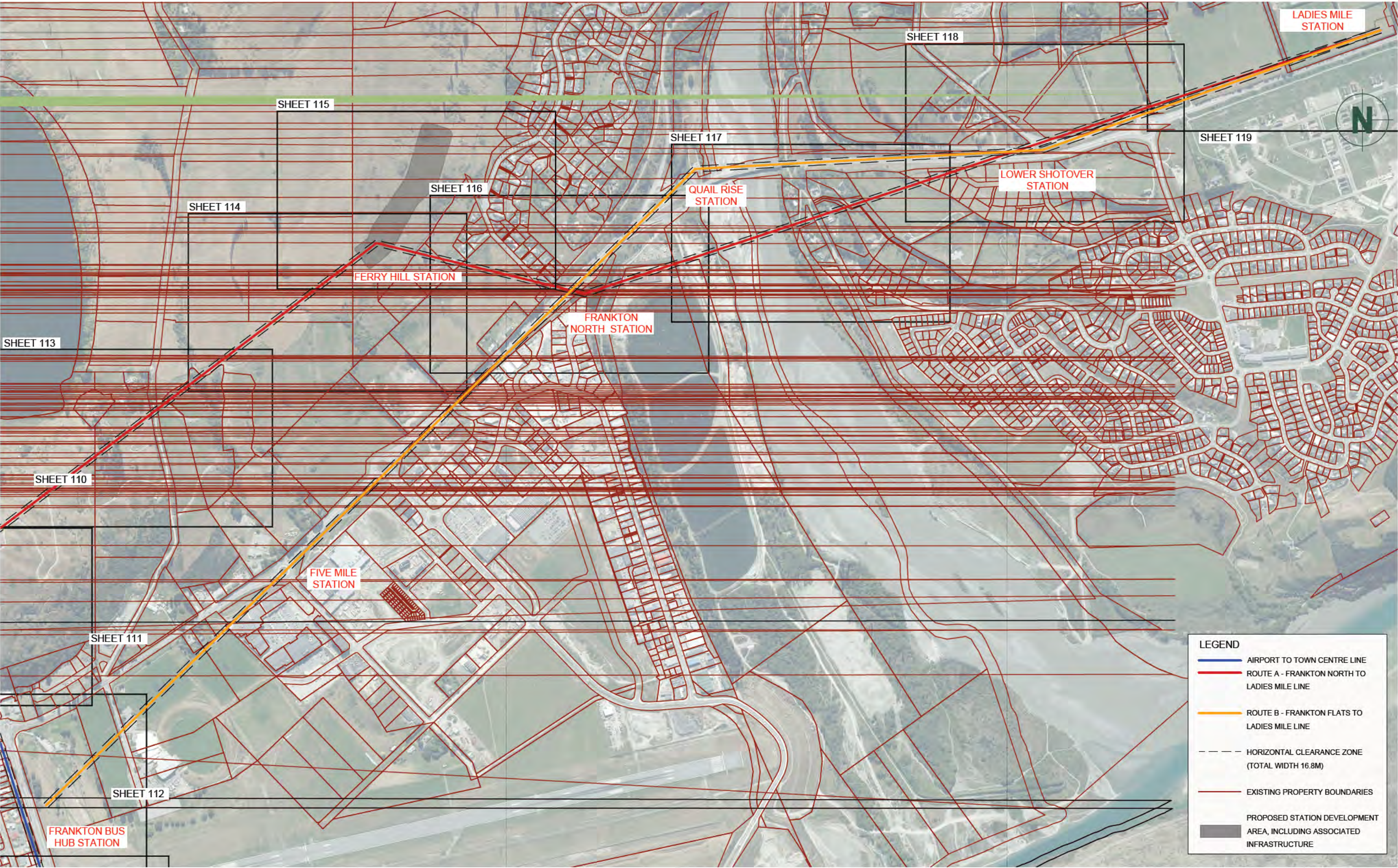




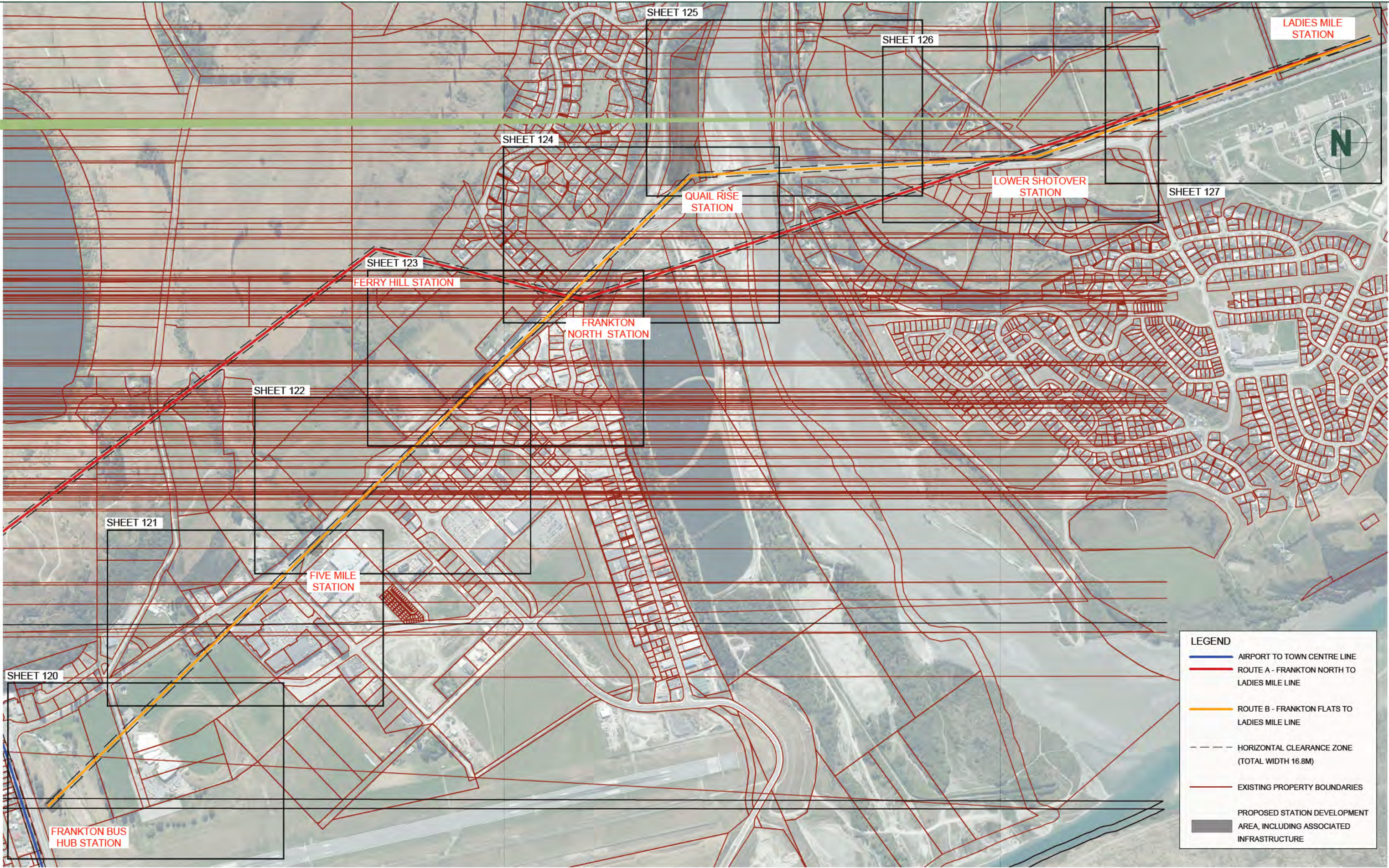




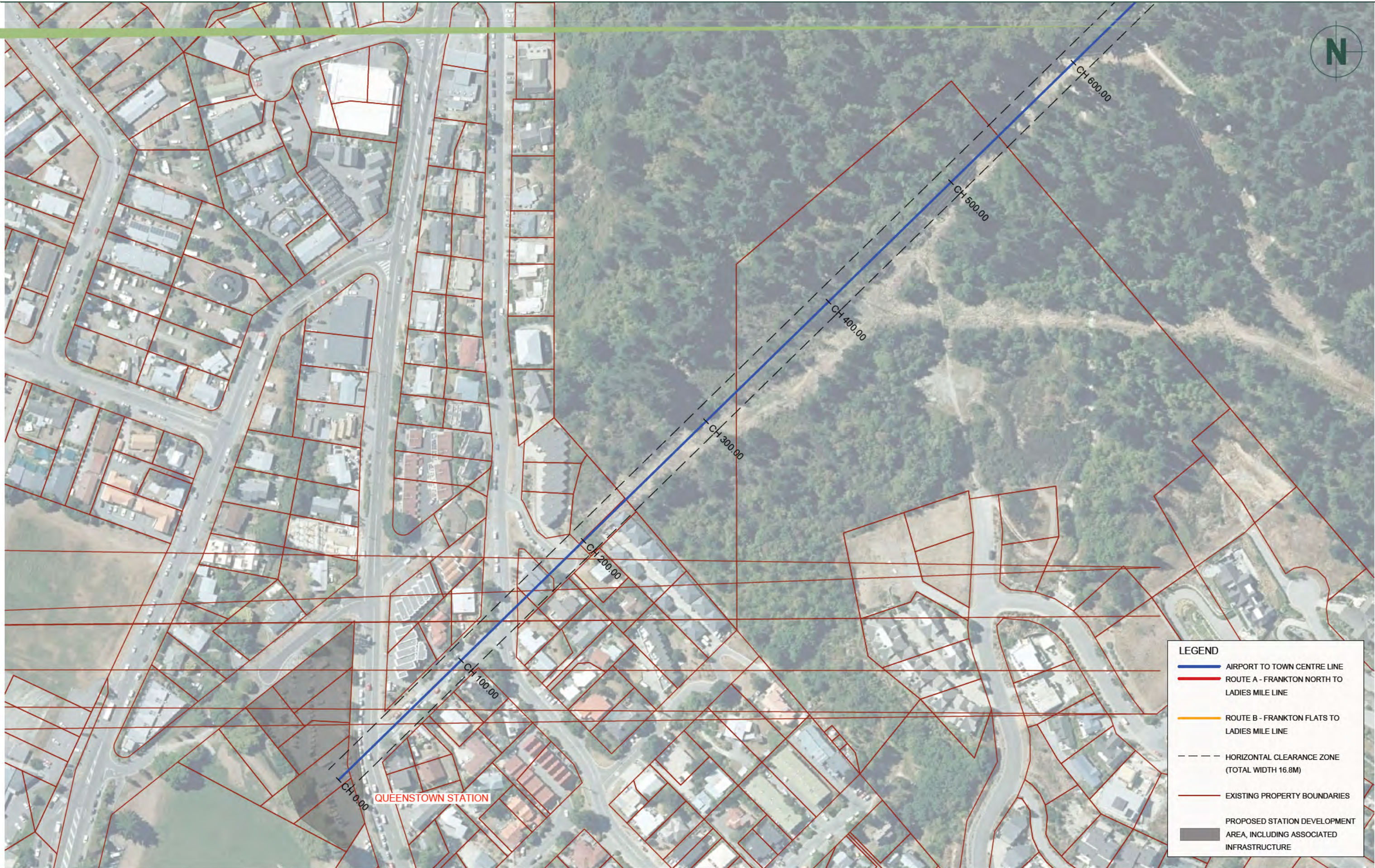




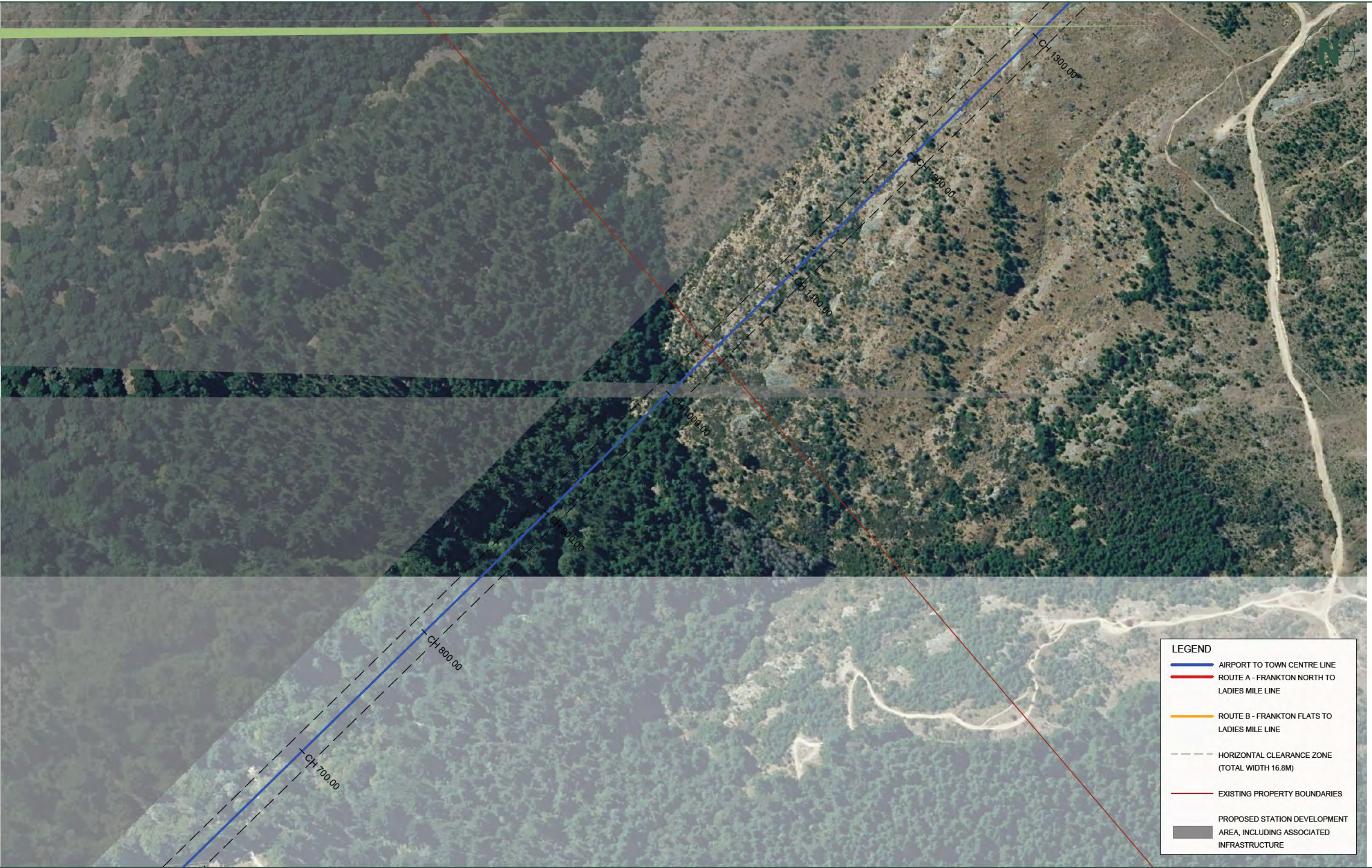












LEGEND

AIRPORT TO TOWN CENTRE LINE

ROUTE A - FRANKTON NORTH TO LADIES MILE LINE

ROUTE B - FRANKTON FLATS TO LADIES MILE LINE

HORIZONTAL CLEARANCE ZONE (TOTAL WIDTH 16.8M)

EXISTING PROPERTY BOUNDARIES

PROPOSED STATION DEVELOPMENT AREA, INCLUDING ASSOCIATED INFRASTRUCTURE









LEGEND

AIRPORT TO TOWN CENTRE LINE

ROUTE A - FRANKTON NORTH TO LADIES MILE LINE

ROUTE B - FRANKTON FLATS TO LADIES MILE LINE

HORIZONTAL CLEARANCE ZONE (TOTAL WIDTH 16.8M)

EXISTING PROPERTY BOUNDARIES

PROPOSED STATION DEVELOPMENT AREA, INCLUDING ASSOCIATED INFRASTRUCTURE





LEGEND

AIRPORT TO TOWN CENTRE LINE

ROUTE A - FRANKTON NORTH TO LADIES MILE LINE

ROUTE B - FRANKTON FLATS TO LADIES MILE LINE

HORIZONTAL CLEARANCE ZONE (TOTAL WIDTH 16.8M)

EXISTING PROPERTY BOUNDARIES

PROPOSED STATION DEVELOPMENT AREA, INCLUDING ASSOCIATED INFRASTRUCTURE





LEGEND

AIRPORT TO TOWN CENTRE LINE

ROUTE A - FRANKTON NORTH TO LADIES MILE LINE

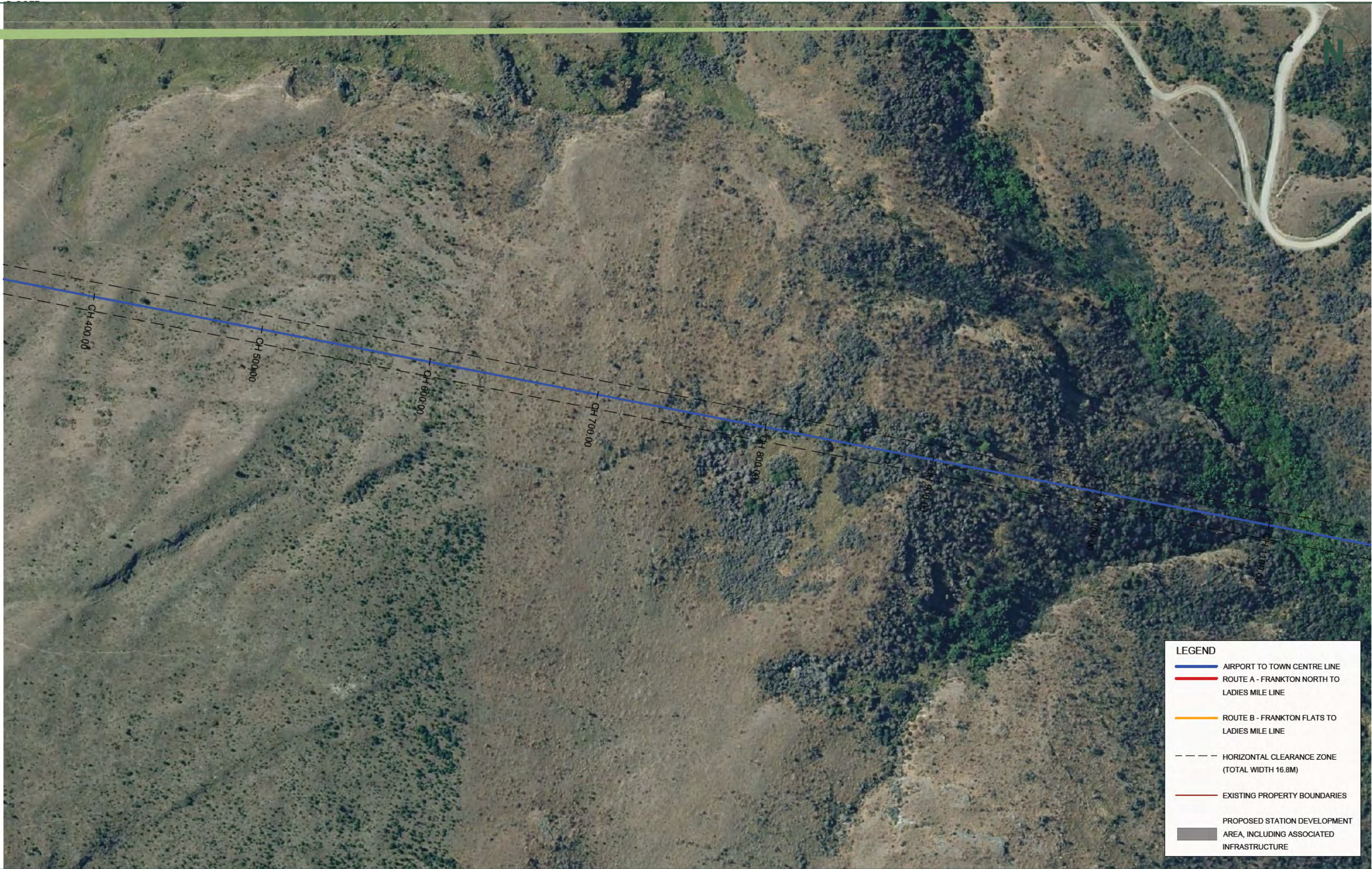
ROUTE B - FRANKTON FLATS TO LADIES MILE LINE

HORIZONTAL CLEARANCE ZONE (TOTAL WIDTH 16.8M)

EXISTING PROPERTY BOUNDARIES

PROPOSED STATION DEVELOPMENT AREA, INCLUDING ASSOCIATED INFRASTRUCTURE













LEGEND

AIRPORT TO TOWN CENTRE LINE


ROUTE A - FRANKTON NORTH TO LADIES MILE LINE

ROUTE B - FRANKTON FLATS TO LADIES MILE LINE

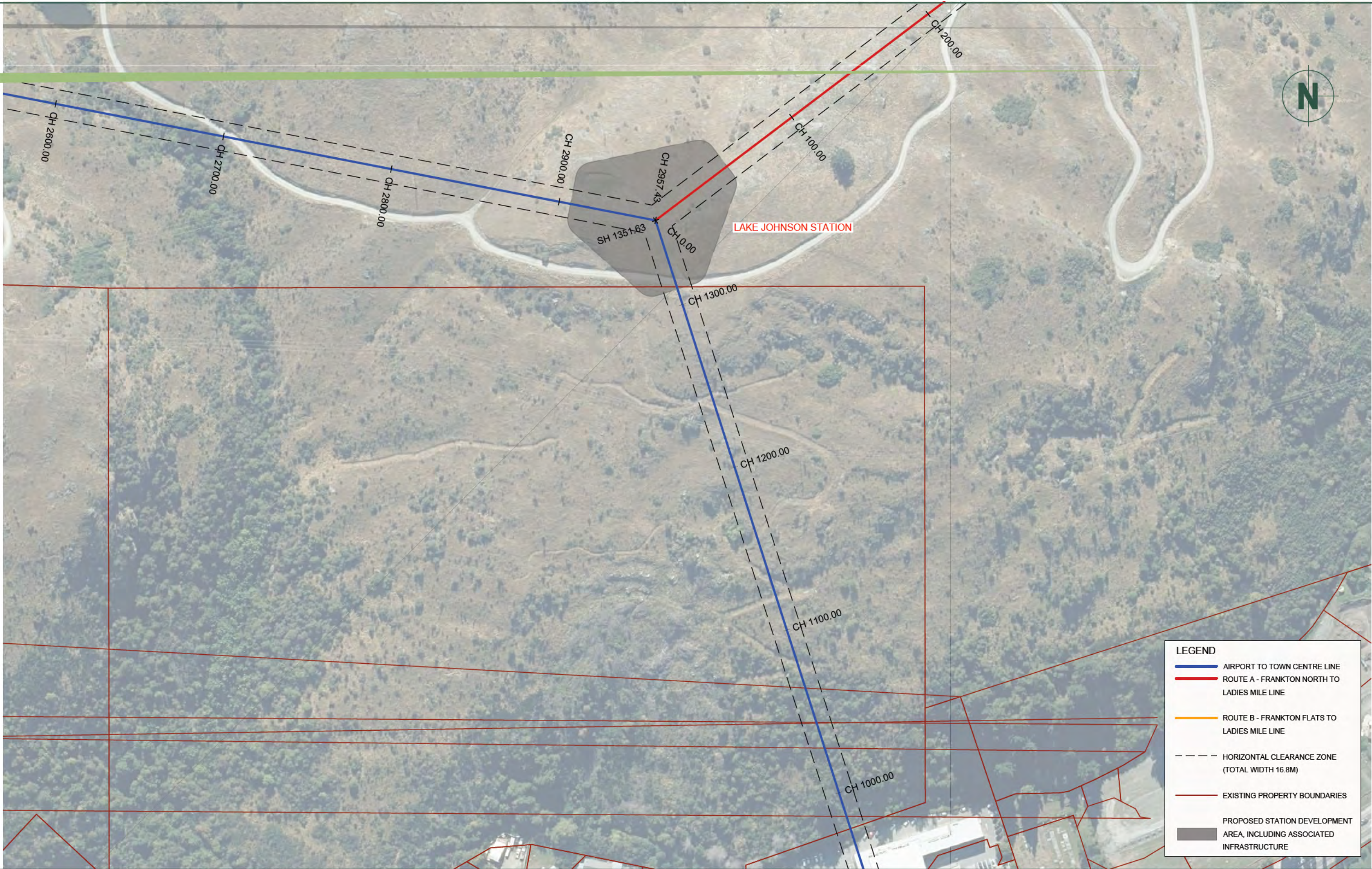
HORIZONTAL CLEARANCE ZONE (TOTAL WIDTH 16.8M)

EXISTING PROPERTY BOUNDARIES

PROPOSED STATION DEVELOPMENT AREA, INCLUDING ASSOCIATED INFRASTRUCTURE

	CLIENT	DRAWING TITLE	DATUM INFORMATION	REV	DRAWN	DATE	NOTE	SURVEYED	PAT	2024/2025	PROJECT	P240854	
	SOUTHERN INFRASTRUCTURE LTD QUEENSTOWN	QUEENSTOWN CABLE CAR	COORDINATE SYSTEM	NZGD 2000	1	AJH	13.10.2025		DESIGNED	AJH	10.02.2025	DRAWING NO	001
			MOUNT NICHOLAS CIRCUIT						DRAWN	AJH	13.10.2025	SHEET	109
				DATUM	NZVD 2016				REVIEWED	SJP	14.10.2025	REVISION	1
			QUEENSTOWN HILL STATION TO LAKE JOHNSON STATION	ORIGIN OF COORDINATES					APPROVED				
				ORIGIN OF LEVELS		STATUS	DRAFT		© Paterson Pitts Limited Partnership		SCALE (A3)	1:2000	





LEGEND

AIRPORT TO TOWN CENTRE LINE

ROUTE A - FRANKTON NORTH TO LADIES MILE LINE

ROUTE B - FRANKTON FLATS TO LADIES MILE LINE

HORIZONTAL CLEARANCE ZONE (TOTAL WIDTH 16.8M)

EXISTING PROPERTY BOUNDARIES

PROPOSED STATION DEVELOPMENT AREA, INCLUDING ASSOCIATED INFRASTRUCTURE









**LEGEND**

- AIRPORT TO TOWN CENTRE LINE
- ROUTE A - FRANKTON NORTH TO LADIES MILE LINE
- ROUTE B - FRANKTON FLATS TO LADIES MILE LINE
- HORIZONTAL CLEARANCE ZONE (TOTAL WIDTH 16.8M)
- EXISTING PROPERTY BOUNDARIES
- PROPOSED STATION DEVELOPMENT AREA, INCLUDING ASSOCIATED INFRASTRUCTURE





**LEGEND**

- AIRPORT TO TOWN CENTRE LINE
- ROUTE A - FRANKTON NORTH TO LADIES MILE LINE
- ROUTE B - FRANKTON FLATS TO LADIES MILE LINE
- HORIZONTAL CLEARANCE ZONE (TOTAL WIDTH 16.8M)
- EXISTING PROPERTY BOUNDARIES
- PROPOSED STATION DEVELOPMENT AREA, INCLUDING ASSOCIATED INFRASTRUCTURE





LEGEND

AIRPORT TO TOWN CENTRE LINE

ROUTE A - FRANKTON NORTH TO LADIES MILE LINE

ROUTE B - FRANKTON FLATS TO LADIES MILE LINE

HORIZONTAL CLEARANCE ZONE (TOTAL WIDTH 16.8M)

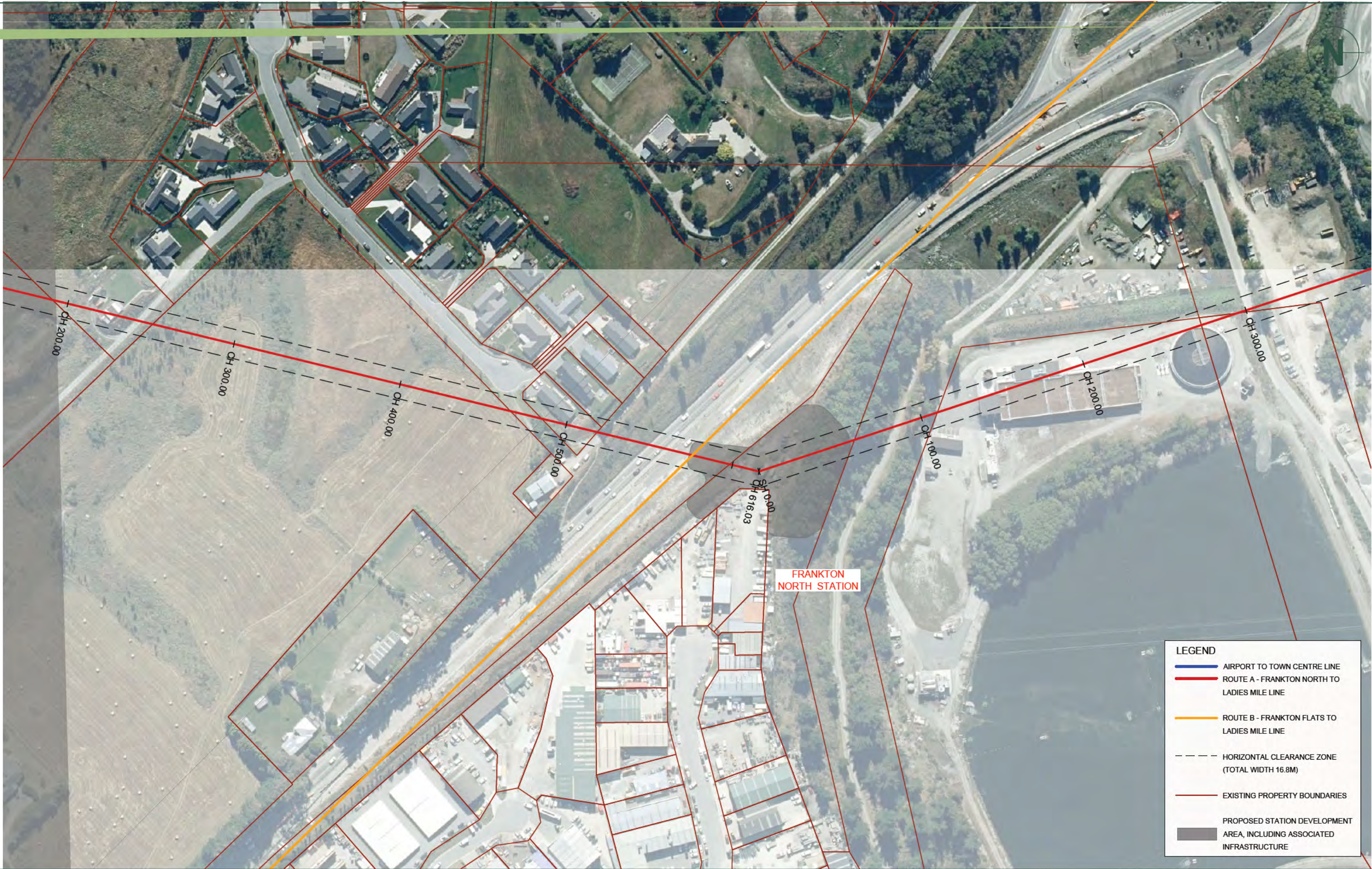
EXISTING PROPERTY BOUNDARIES

PROPOSED STATION DEVELOPMENT AREA, INCLUDING ASSOCIATED INFRASTRUCTURE









**LEGEND**

- AIRPORT TO TOWN CENTRE LINE
- ROUTE A - FRANKTON NORTH TO LADIES MILE LINE
- ROUTE B - FRANKTON FLATS TO LADIES MILE LINE
- HORIZONTAL CLEARANCE ZONE (TOTAL WIDTH 16.8M)
- EXISTING PROPERTY BOUNDARIES
- PROPOSED STATION DEVELOPMENT AREA, INCLUDING ASSOCIATED INFRASTRUCTURE

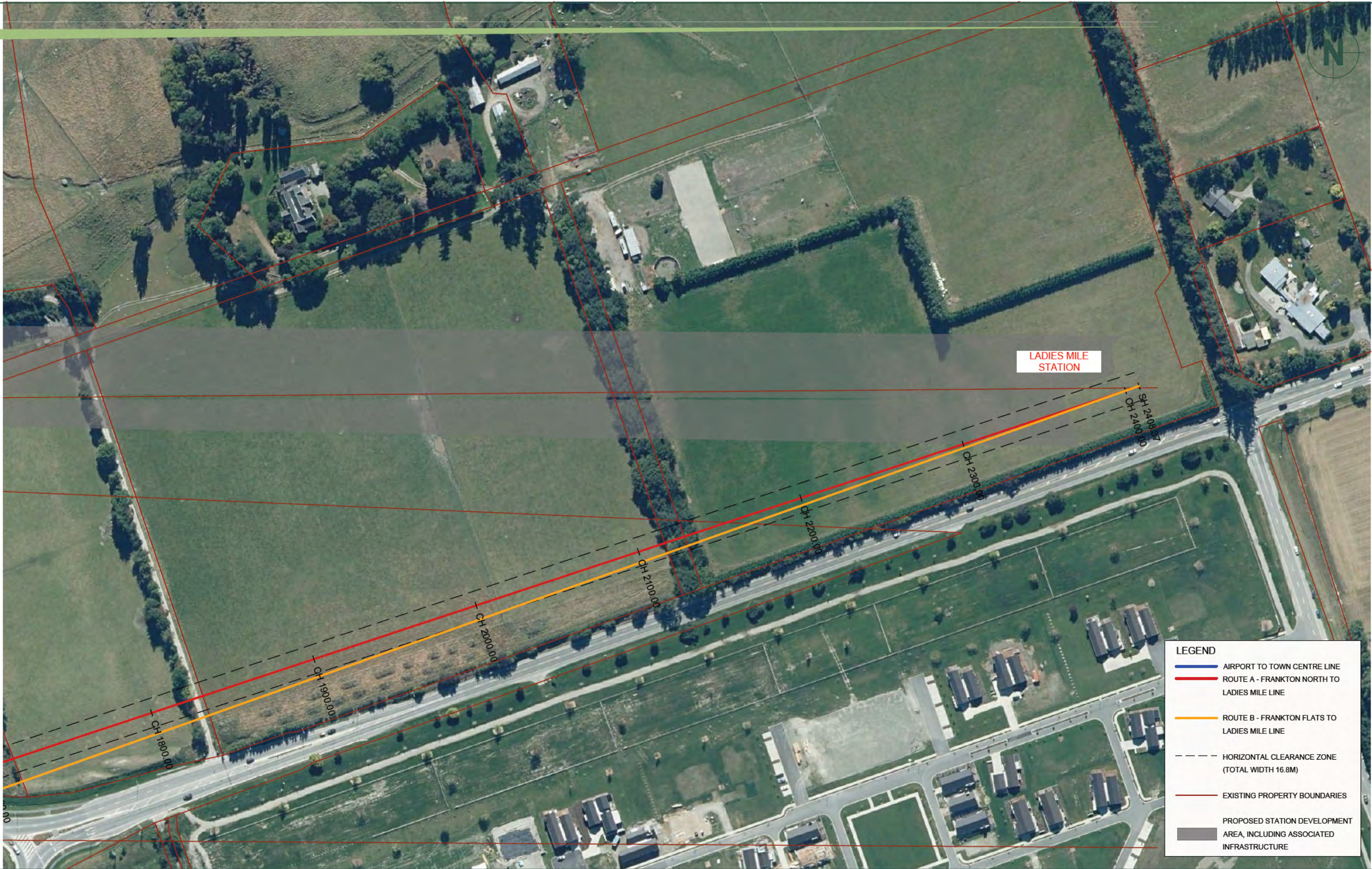












**LEGEND**

- AIRPORT TO TOWN CENTRE LINE
- ROUTE A - FRANKTON NORTH TO LADIES MILE LINE
- ROUTE B - FRANKTON FLATS TO LADIES MILE LINE
- - - HORIZONTAL CLEARANCE ZONE (TOTAL WIDTH 16.8M)
- EXISTING PROPERTY BOUNDARIES
- PROPOSED STATION DEVELOPMENT AREA, INCLUDING ASSOCIATED INFRASTRUCTURE





FRANKTON BUS  
HUB STATION

**LEGEND**

- AIRPORT TO TOWN CENTRE LINE
- ROUTE A - FRANKTON NORTH TO LADIES MILE LINE
- ROUTE B - FRANKTON FLATS TO LADIES MILE LINE
- HORIZONTAL CLEARANCE ZONE (TOTAL WIDTH 16.8M)
- EXISTING PROPERTY BOUNDARIES
- PROPOSED STATION DEVELOPMENT AREA, INCLUDING ASSOCIATED INFRASTRUCTURE

**patersons.**  
Land Professionals

CLIENT  
**SOUTHERN INFRASTRUCTURE LTD  
QUEENSTOWN**

DRAWING TITLE  
**QUEENSTOWN CABLE CAR  
FRANKTON BUS HUB STATIONS**

DATUM INFORMATION  
COORDINATE SYSTEM  
MOUNT NICHOLAS CIRCUIT  
DATUM  
ORIGIN OF COORDINATES  
ORIGIN OF LEVELS

REV DRAWN DATE NOTE  
1 AJH 13.10.2025  
STATUS **DRAFT**

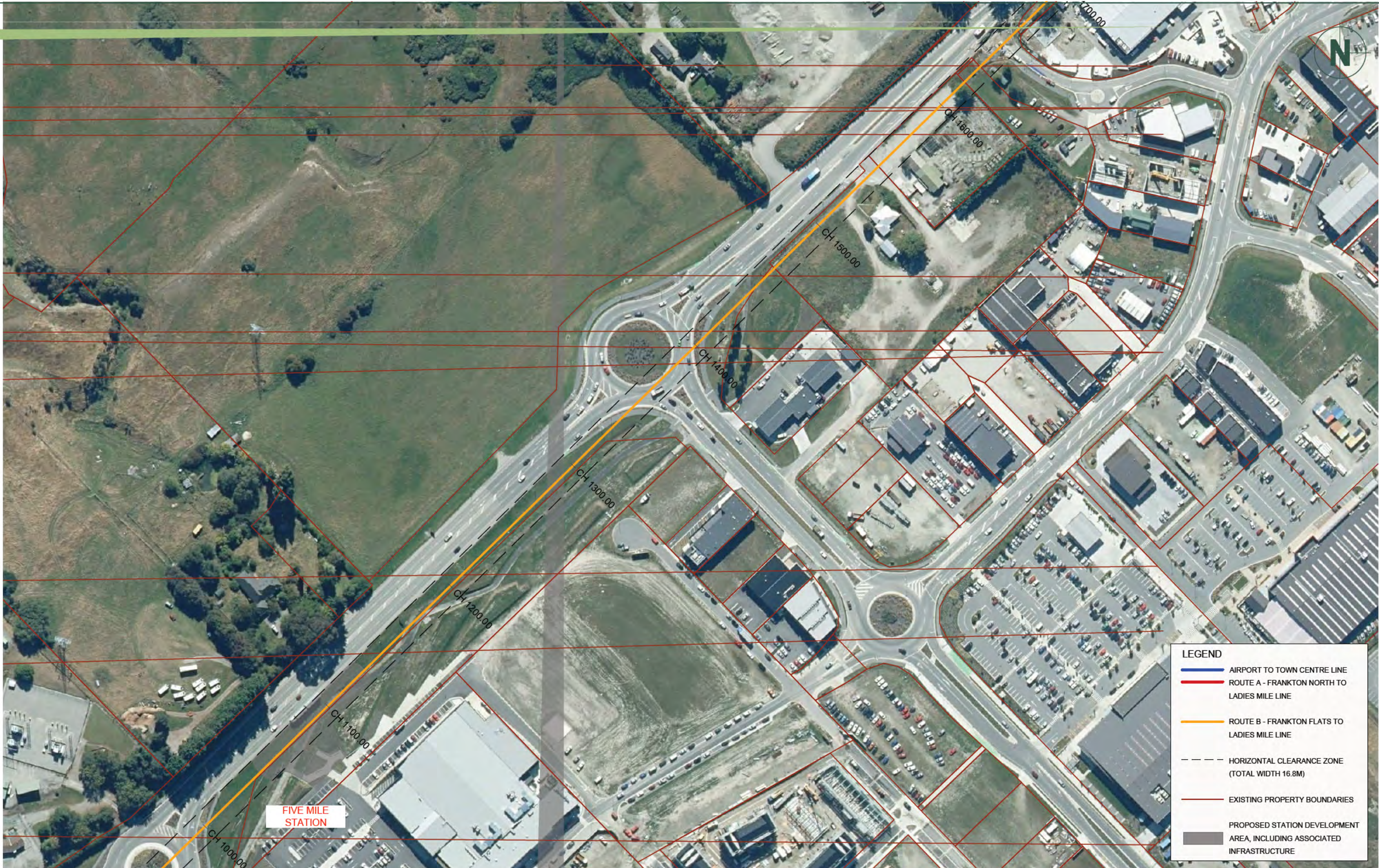
SURVEYED PAT 2024/2025  
DESIGNED AJH 10.02.2025  
DRAWN AJH 13.10.2025  
REVIEWED SJP 14.10.2025  
APPROVED  
© Paterson Pitts Limited Partnership

PROJECT **P240854**  
DRAWING NO **001**  
SHEET **120**  
REVISION **1**  
SCALE (A3) **1:2000**









FIVE MILE  
STATION

**LEGEND**

- AIRPORT TO TOWN CENTRE LINE
- ROUTE A - FRANKTON NORTH TO LADIES MILE LINE
- ROUTE B - FRANKTON FLATS TO LADIES MILE LINE
- HORIZONTAL CLEARANCE ZONE (TOTAL WIDTH 16.8M)
- EXISTING PROPERTY BOUNDARIES
- PROPOSED STATION DEVELOPMENT AREA, INCLUDING ASSOCIATED INFRASTRUCTURE





**LEGEND**

- AIRPORT TO TOWN CENTRE LINE
- ROUTE A - FRANKTON NORTH TO LADIES MILE LINE
- ROUTE B - FRANKTON FLATS TO LADIES MILE LINE
- HORIZONTAL CLEARANCE ZONE (TOTAL WIDTH 16.8M)
- EXISTING PROPERTY BOUNDARIES
- PROPOSED STATION DEVELOPMENT AREA, INCLUDING ASSOCIATED INFRASTRUCTURE

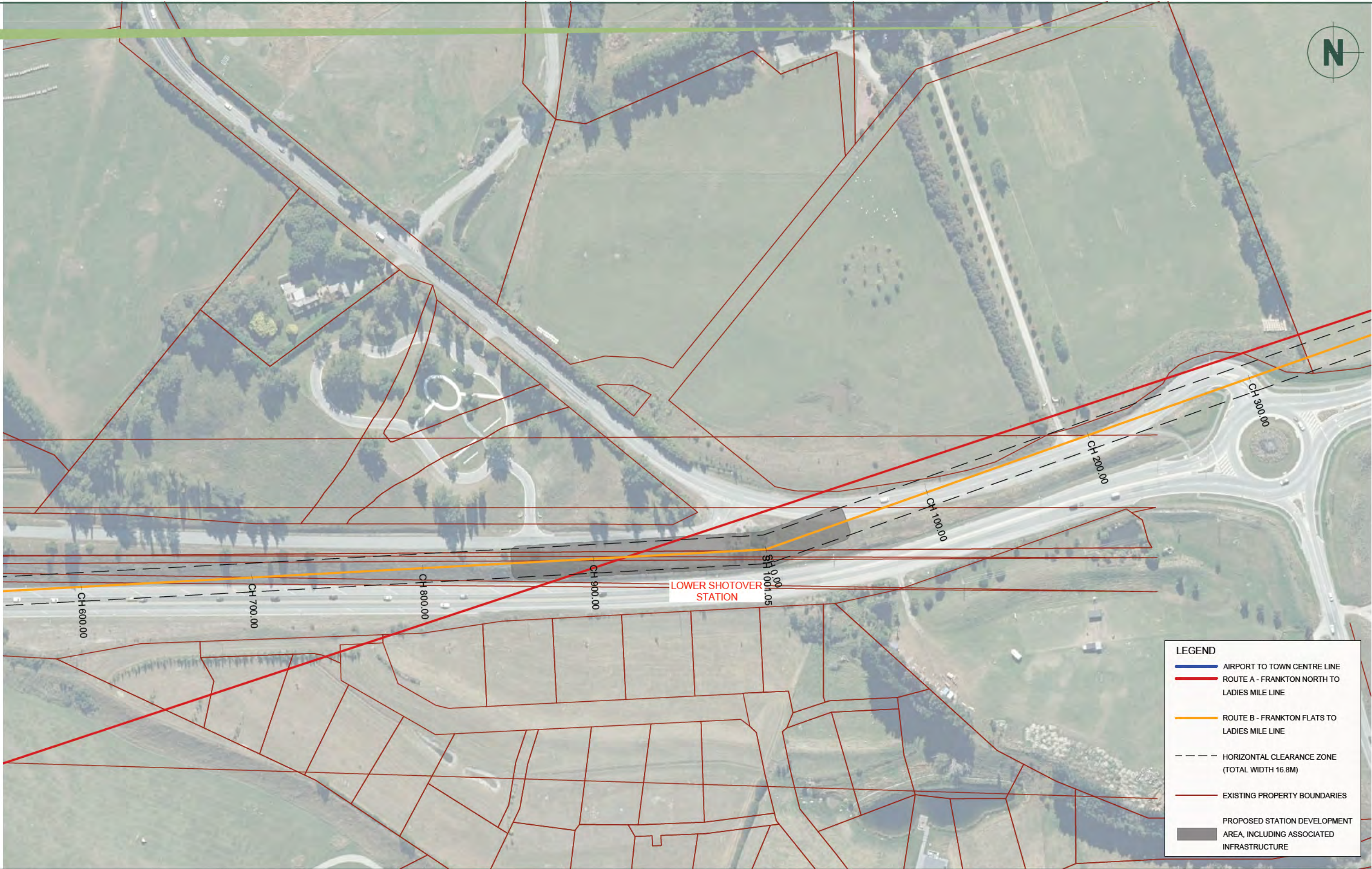












**LEGEND**

- AIRPORT TO TOWN CENTRE LINE
- ROUTE A - FRANKTON NORTH TO LADIES MILE LINE
- ROUTE B - FRANKTON FLATS TO LADIES MILE LINE
- HORIZONTAL CLEARANCE ZONE (TOTAL WIDTH 16.8M)
- EXISTING PROPERTY BOUNDARIES
- PROPOSED STATION DEVELOPMENT AREA, INCLUDING ASSOCIATED INFRASTRUCTURE



