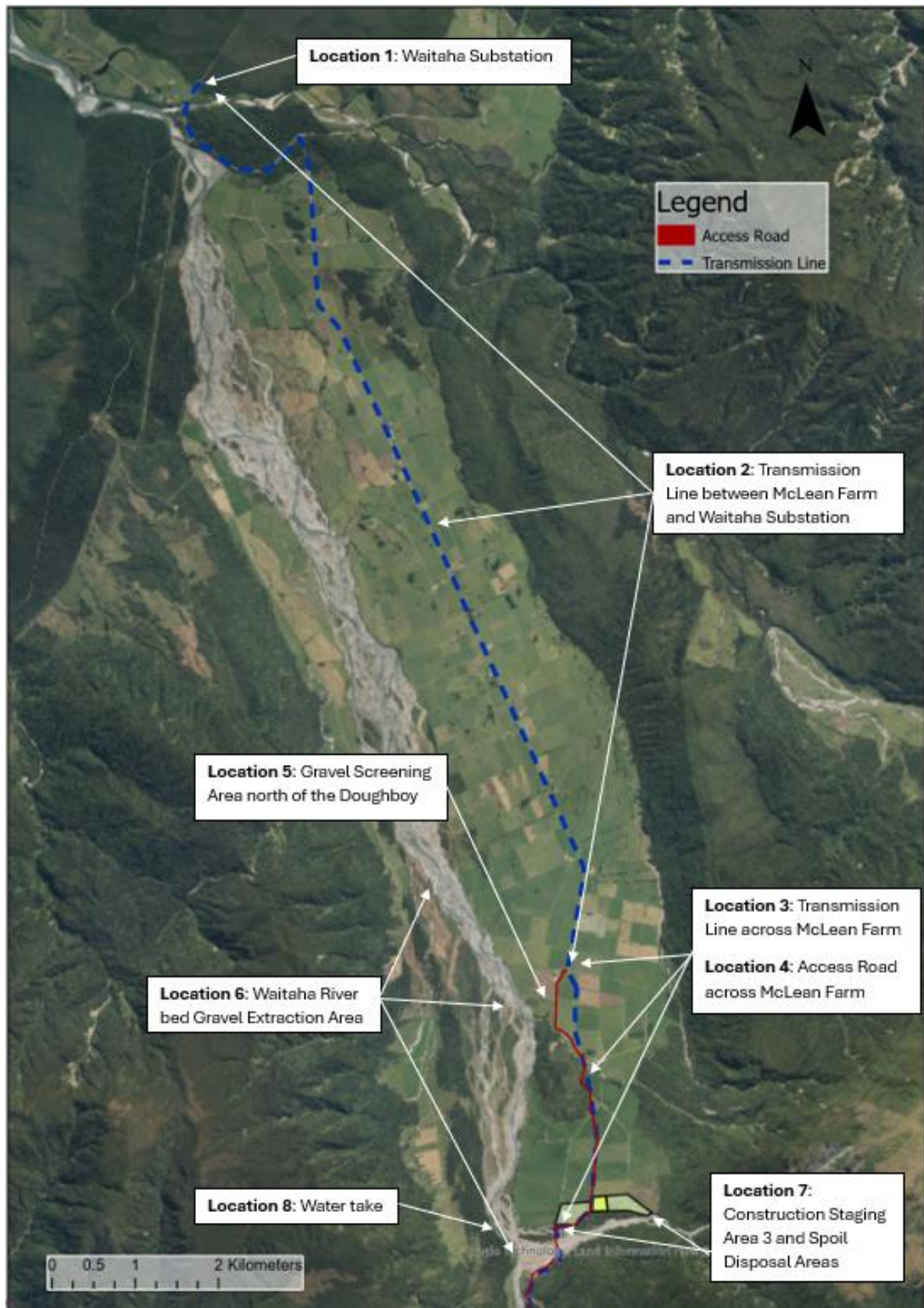


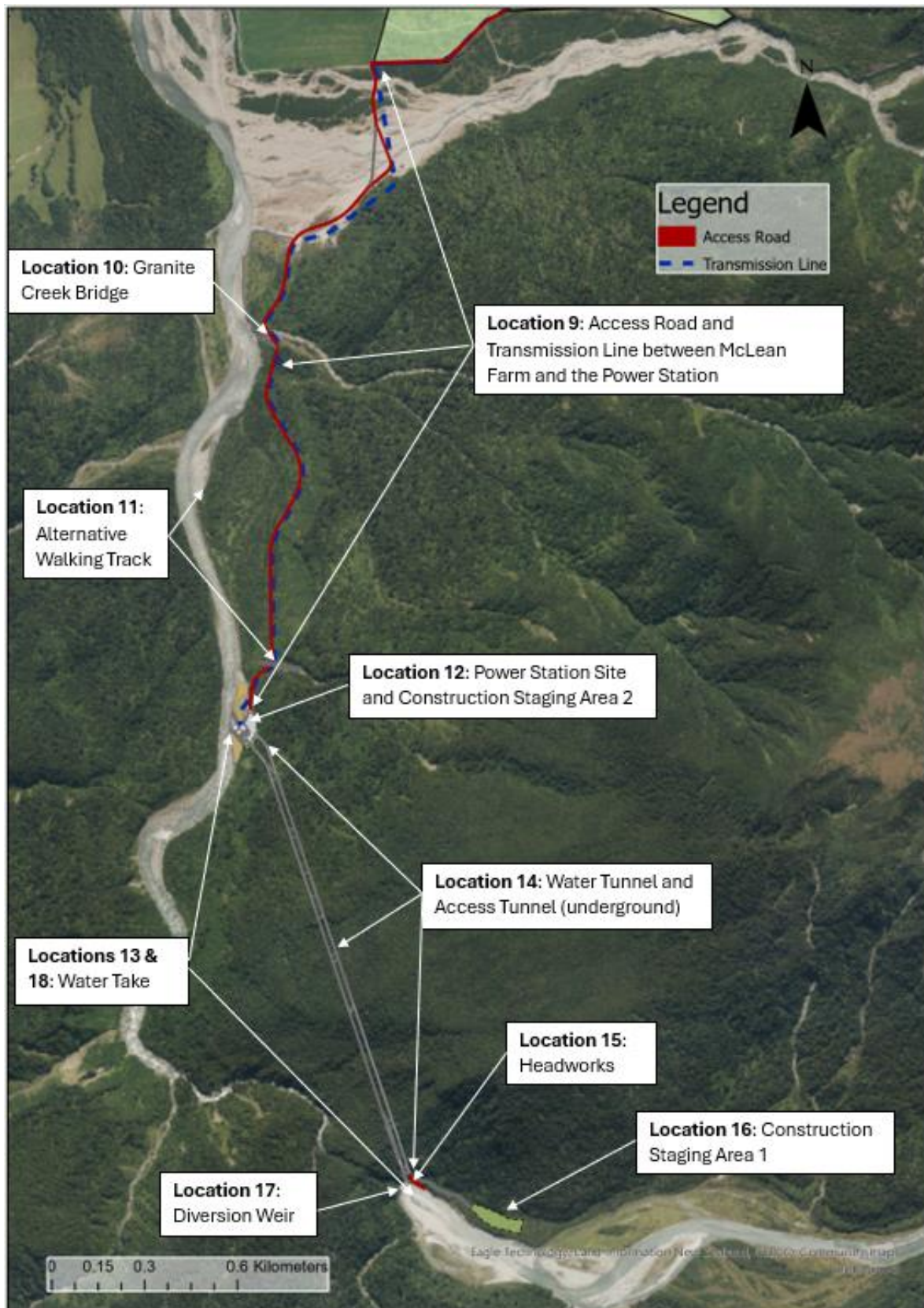
PROJECT MAPPING COORDINATES REGISTER

Scheme Component		Coordinates		
		From (at or about)	Middle (at or about)	To (at or about)
Location 1	Waitaha Substation	E 1411456 N 5239529	E 1411463 N 5239520	E 1411476 N 5239501
Location 2	Power line between McLean Farm and Waitaha Substation	E 1411476 N 5239501	E 1414215 N 5234228	E 1415884 N 5228832
Location 3	Transmission line across McLean Farm	E 1415884 N 5228832	E 1416127 N 5227564	E 1415745 N 5223781
Location 4	Access road across McLean Farm	E 1415884 N 5228832	E 1416164 N 5227235	E 1415745 N 5223781
Location 5	Gravel screening area north of Doughboy	E 1415485 N 5228538	E 1415605 N 5228522	E 1415714 N 5228514
Location 6	Waitaha River bed gravel extraction area	E 1414269 N 5230185	E 1415222 N 5228369	E 1415254 N 5225652
Location 7	Construction Staging Area 3 (including land-based gravel extraction, spoil disposal areas, concrete batching plant discharges)	E 1415923 N 5225928	E 1416259 N 5226033	E 1416786 N 5225975
Location 8	Surface water take for concrete batching plant, dust suppression and ancillary construction activities	-	E 1415086 N 5225710	-
Location 9	Access road and transmission line between McLean Farm and the Power Station	E 1415743 N 5225780	E 1415418 N 5224809	E 1415345 N 5223694
Location 10	Granite Creek Bridge	E 1415394 N 5224921	E 1415394 N 5224921	E 1415427 N 5224863
Location 11	Alternative walking track to avoid the power station site	E 1415183 N 5224416	E 1415285 N 5224122	E 1415406 N 5223856
Location 12	Power station site (including power station, tailbay, tailrace, switchyard, portals and portal access) and Construction Staging Area 2	E 1415332 N 5223691	E 1415334 N 5223633	E 1415332 N 5223573
Location 13	Surface water take for drilling, tunnelling and facilities at the power station	-	E 1415276 N 5223587	-
Location 14	Access and water tunnels, including desander (underground)	E 1415363 N 5223612	E 1415605 N 5222922	E 1415855 N 5222174
Location 15	Headworks area	E 1415821 N 5222165		E 1416221 N 5222017
Location 16	Construction Staging Area 1	E 1416060 N 5222084	E 1416142 N 5222039	E 1416221 N 5222017
Location 17	Diversion weir	-	E 1415919 N 5222162	-
Location 18	Surface water take for drilling, tunnelling and facilities at the headworks	-	E 1415852 N 5222158	-
Location 19	Location of water level and weather monitoring stations: 1. Near Moonbeam Hut 2. At Scamper Torrent 3. At the bottom of Waitaha Gorge 4. Just below the weir	E 1421022, N 5221558 E 1416361, N 5219796 E 1417844, N 5222030 E 1415766, N 5222177		
Location 20	Geotechnical drilling locations (Coordinate denotes middle point of the 10m x 10m drilling pad)	BH-H01 - between headwork portals	E 1415847, N 5222176	-
		BH-H02a - Above the headgate (intake tunnel)	E 1415775, N 5222347	-
		BH-H03 - above the desander	E 1415830, N 5222249	-
		BH-M02a - Above the tunnels	E 1415721, N 5222563	-
		BH-M01a Above the tunnels	E 1415570, N 5223040	-
		BH-PS02 - Terrace above the power station site	E 1415404, N 5223549	-
		BH-PS01 – At power station building site	E 1415331, N 5223599	-

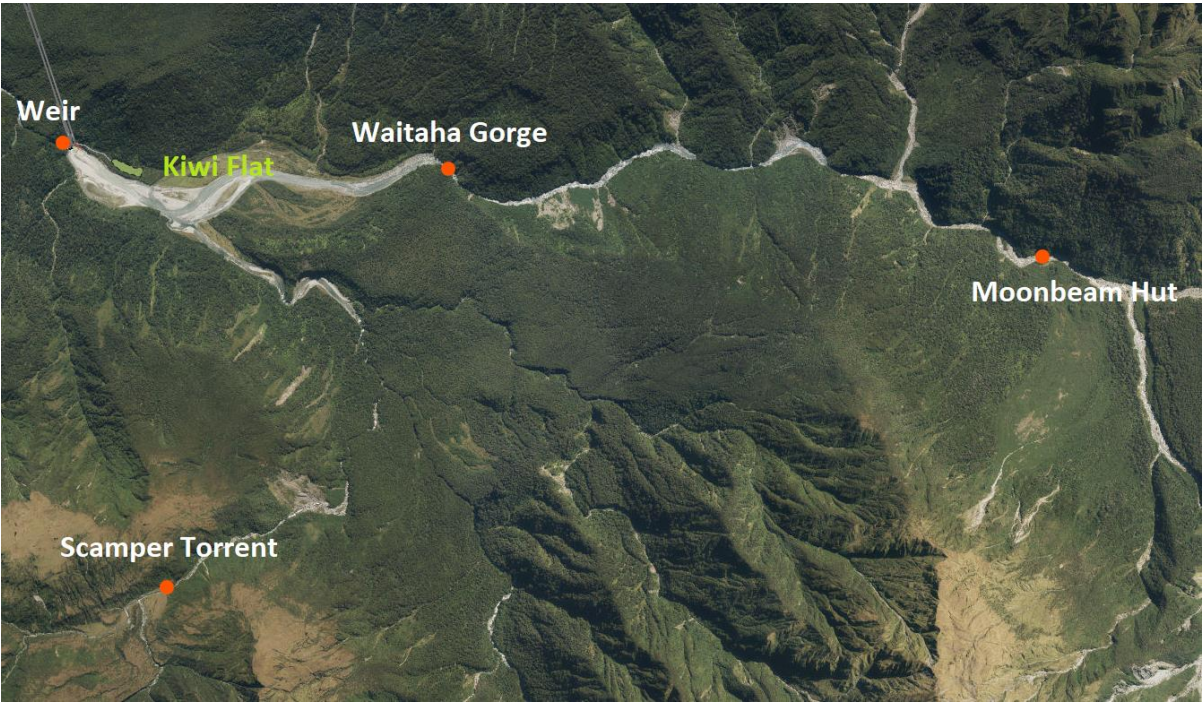
Locations 1-8 (indicative)



Locations 9-18 (indicative)



Location 19 Water Level and Weather Monitoring (indicative)



Location 20 Geotechnical Drilling

