



1. REFER TO MAVEN FLOODING REPORT FOR HAZARD MAPPING DETAILS
2. 1% AEP POST-DEVELOPMENT AT 3.8 DEGREES (32.7%)
3. SITE POST-DEVELOPMENTS AND OUTSIDE SITE MPD

- NOTES
1. ALL WORKS TO BE IN ACCORDANCE WITH AUCKLAND COUNCIL STANDARDS
 2. PIPE BEDDING: 0 - 10% GRANULAR BEDDING; 10 - 20% WEAK CONCRETE BEDDING GREATER THAN 20% WEAK CONCRETE BEDDING (DIPA PLUS ANTI SCOUR BLOCKS AT 6m CRS)
 3. EACH CONNECTION SHALL BE MARKED BY A 50mm x 50mm TREATED PINE STAKE EXTENDING 600mm ABOVE GROUND LEVEL WITH THE TOP PAINTED THIS MARKER POST SHALL BE PLACED ALONGSIDE A TIMBER MARKER INSTALLED AT THE TIME OF PIPELaying AND EXTENDING FROM THE CONNECTION TO 150mm BELOW FINISHED GROUND LEVEL. CONNECTIONS SHALL BE ACCURATELY INDICATED ON 'AS BUILT' PLANS.
 4. APPROVED HANDBILL IS TO BE USED IN BACKFILLING OF ALL ROAD CROSSINGS AND VEHICLE CROSSINGS TO COUNCIL STANDARDS
 5. HEAVY DUTY MANHOLE LIDS AND FRAMES TO BE USED IN TRAFFICED AREAS
 6. ALL MANHOLES ARE TO BE 1500mm PRECAST CONCRETE UNLESS SHOWN OTHERWISE
 7. ALL CATCHPIT LEADS ARE 250mm DIAMETER AND SHALL HAVE MIN COVER 1.0m
 8. ALL LINES TO BE ABANDONED SHALL BE SEALED AT EACH END. TBMING OF ALL SEALING TO BE COORDINATED WITH COUNCIL STAFF.
 9. ALL LOT CONNECTION TO BE MIN 100mm uPVC S/N16 UNLESS SHOWN OTHERWISE
 10. ALL ROOF WATER RUNOFF PIPE TO BE 150 uPVC S/N16 UNLESS SHOWN OTHERWISE.

- LEGEND
- EX BOY
 - PR BOY
 - DS STORMWATER
 - PR STORMWATER ROAD
 - PR 100-YEAR FLOOD EXTENT

A SECTION 53		SP	10/2025
Stat	Revisions	By	Date
	By	Date	
Survey	LDAR	03/2024	
Design	RH	09/2025	
Drawn	SP	09/2025	
Checked	RH	10/2025	



Project
DEVELOPMENT OF RIVERHEAD FOREST FOR RANGITOOPUNI DEVELOPMENTS LIMITED PARTNERSHIP

Title
RETIREMENT VILLAGE 1% AEP POST DEVELOPMENT OVERVIEW PLAN

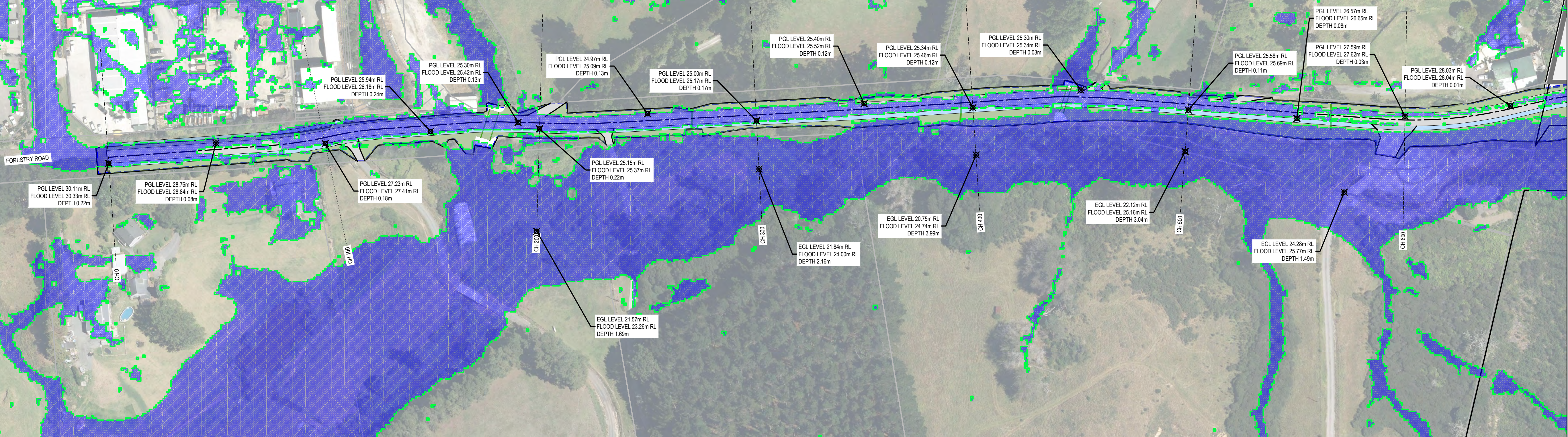
Project no.	147016
Scale	1:5000 @ A1
Cad file	W1016449-C475-1B-FLOOD-100YR-POST.DWG
Drawing no.	C475-1B-0
Rev	

DRAFT FOR REVIEW



1. REFER TO MAVEN FLOODING REPORT FOR HAZARD MAPPING DETAILS
2. 1% AEP POST-DEVELOPMENT AT 3.8 DEGREES (32.7%)
3. SITE POST-DEVELOPMENTS AND OUTSIDE SITE MPD

- NOTES
1. ALL WORKS TO BE IN ACCORDANCE WITH AUCKLAND COUNCIL STANDARDS
 2. PIPE BEDDING: 0 - 10% GRANULAR BEDDING, 10 - 20% WEAK CONCRETE BEDDING GREATER THAN 20% WEAK CONCRETE BEDDING (DIPA PLUS ANTI SCOUR BLOCKS AT 6m CRS)
 3. EACH CONNECTION SHALL BE MARKED BY A 50mm x 50mm TREATED PINE STAKE EXTENDING 600mm ABOVE GROUND LEVEL WITH THE TOP PAINTED THIS MARKER POST SHALL BE PLACED ALONGSIDE A TIMBER MARKER INSTALLED AT THE TIME OF PRELAYSING AND EXTENDING FROM THE CONNECTION TO 150mm BELOW FINISHED GROUND LEVEL. CONNECTIONS SHALL BE ACCURATELY INDICATED ON 'AS BUILT' PLANS.
 4. APPROVED MANHOLE IS TO BE USED IN BACKFILLING OF ALL ROAD CROSSINGS AND VEHICLE CROSSINGS TO COUNCIL STANDARDS
 5. HEAVY DUTY MANHOLE LIDS AND FRAMES TO BE USED IN TRAFFICED AREAS
 6. ALL MANHOLES ARE TO BE 1500mm PRECAST CONCRETE UNLESS SHOWN OTHERWISE
 7. ALL CATCHPIE LEADS ARE 25mm DIAMETER AND SHALL HAVE MIN COVER 1.0m
 8. ALL LINES TO BE ABANDONED SHALL BE SEALED AT EACH END. TYPING OF ALL SEALING TO BE COORDINATED WITH COUNCIL STAFF.
 9. ALL LOT CONNECTION TO BE MIN 100mm UPVC S/N16 UNLESS SHOWN OTHERWISE
 10. ALL ROOF WATER RUNOFF PIPE TO BE 150 UPVC S/N16 UNLESS SHOWN OTHERWISE



- LEGEND
- EX BOY
 - PR BOY
 - DR STORMWATER
 - PR STORMWATER ROAD
 - PR 100-YEAR FLOOD EXTENT

A		SECTION 53	SP	10/2025
Rev	Revisions	By	Date	
1	By	DAIR	03/2024	
2	By	RH	08/2025	
3	By	SP	10/2025	
4	By	RH	10/2025	



Project
DEVELOPMENT OF RIVERHEAD FOREST FOR RANGITOOPUNI DEVELOPMENTS LIMITED PARTNERSHIP

Title
RETIREMENT VILLAGE 1% AEP POST DEVELOPMENT FLOOD PLAN

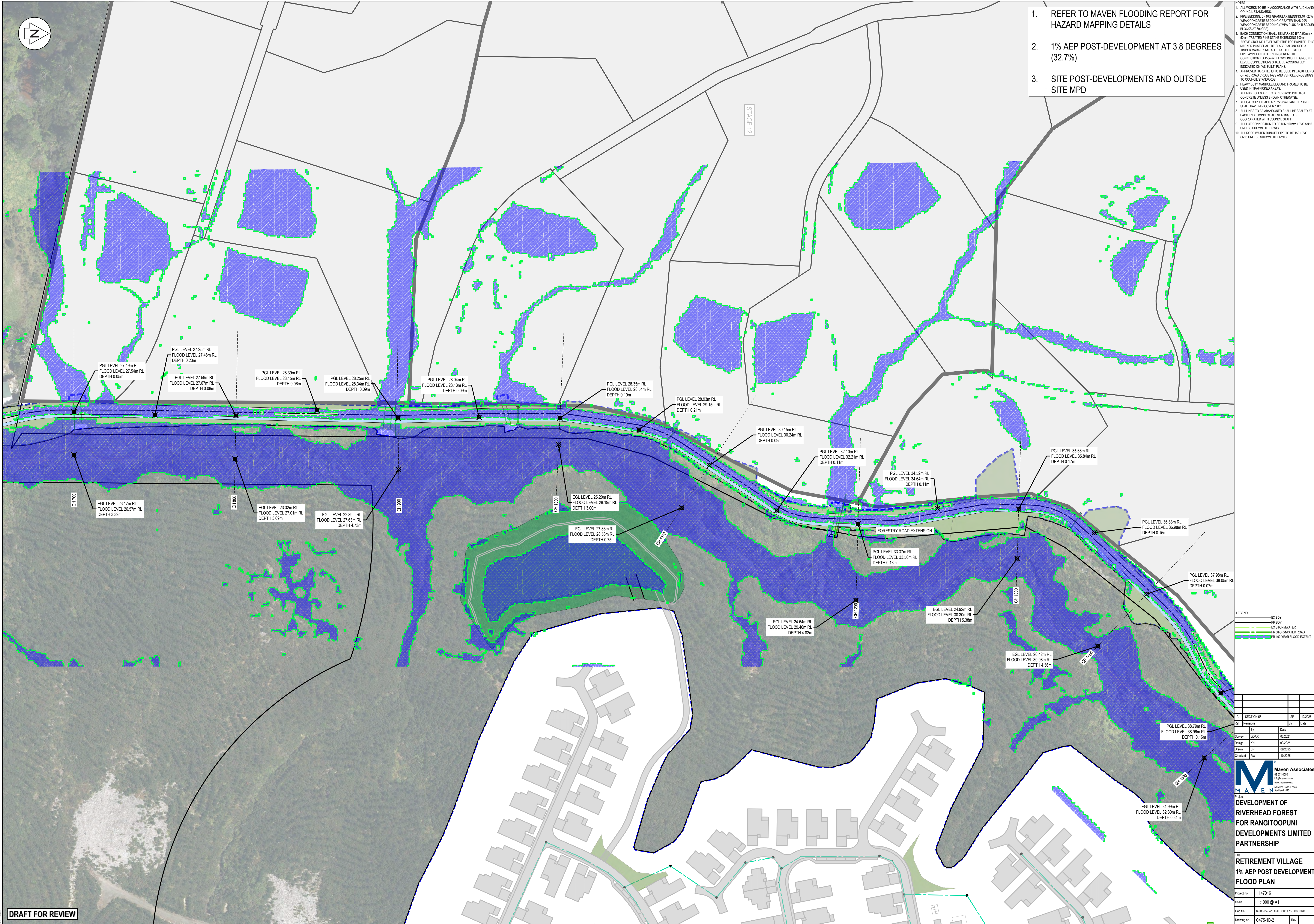
Project no.	147016
Scale	1:1000 @ A1
Cad file	WTP0449-C475-16-FLOOD-100YR-POST.DWG
Drawing no.	C475-1B-1
Rev	

DRAFT FOR REVIEW



1. REFER TO MAVEN FLOODING REPORT FOR HAZARD MAPPING DETAILS
2. 1% AEP POST-DEVELOPMENT AT 3.8 DEGREES (32.7%)
3. SITE POST-DEVELOPMENTS AND OUTSIDE SITE MPD

- NOTES
1. ALL WORKS TO BE IN ACCORDANCE WITH AUCKLAND COUNCIL STANDARDS
 2. PIPE BEDDING: 0 - 10% GRANULAR BEDDING; 10 - 20% WEAK CONCRETE BEDDING GREATER THAN 20% WEAK CONCRETE BEDDING (DIPA PLUS ANTI SCOUR BLOCKS AT 6m CRS)
 3. EACH CONNECTION SHALL BE MARKED BY A 50mm x 50mm TREATED PINE STAKE EXTENDING 600mm ABOVE GROUND LEVEL WITH THE TOP PAINTED THIS MARKER POST SHALL BE PLACED ALONGSIDE A TIMBER MARKER INSTALLED AT THE TIME OF PIPELaying AND EXTENDING FROM THE CONNECTION TO 150mm BELOW FINISHED GROUND LEVEL. CONNECTIONS SHALL BE ACCURATELY INDICATED ON 'AS BUILT' PLANS.
 4. APPROVED HANDBILL TO BE USED IN BACKFILLING OF ALL ROAD CROSSINGS AND VEHICLE CROSSINGS TO COUNCIL STANDARDS
 5. HEAVY DUTY MANHOLE LIDS AND FRAMES TO BE USED IN TRAFFICED AREAS
 6. ALL MANHOLES ARE TO BE 1500mm PRECAST CONCRETE UNLESS SHOWN OTHERWISE
 7. ALL CATCHPIT LEADS ARE 25mm DIAMETER AND SHALL HAVE MIN COVER 1.0m
 8. ALL LINES TO BE ABANDONED SHALL BE SEALED AT EACH END. TAPPING OF ALL SEALING TO BE COORDINATED WITH COUNCIL STAFF.
 9. ALL LOT CONNECTION TO BE MIN 100mm uPVC S/N16 UNLESS SHOWN OTHERWISE
 10. ALL ROOF WATER RUNOFF PIPE TO BE 150 uPVC S/N16 UNLESS SHOWN OTHERWISE



- LEGEND
- EX BOY
 - PR BOY
 - EX STORMWATER
 - PR STORMWATER ROAD
 - PR 100 YEAR FLOOD EXTENT

A SECTION 53		SP	10/2025
Rev	Revisions	By	Date
1	By		
2	By		
3	By		
4	By		
5	By		
6	By		
7	By		
8	By		
9	By		
10	By		
11	By		
12	By		
13	By		
14	By		
15	By		
16	By		
17	By		
18	By		
19	By		
20	By		
21	By		
22	By		
23	By		
24	By		
25	By		
26	By		
27	By		
28	By		
29	By		
30	By		
31	By		
32	By		
33	By		
34	By		
35	By		
36	By		
37	By		
38	By		
39	By		
40	By		
41	By		
42	By		
43	By		
44	By		
45	By		
46	By		
47	By		
48	By		
49	By		
50	By		
51	By		
52	By		
53	By		
54	By		
55	By		
56	By		
57	By		
58	By		
59	By		
60	By		
61	By		
62	By		
63	By		
64	By		
65	By		
66	By		
67	By		
68	By		
69	By		
70	By		
71	By		
72	By		
73	By		
74	By		
75	By		
76	By		
77	By		
78	By		
79	By		
80	By		
81	By		
82	By		
83	By		
84	By		
85	By		
86	By		
87	By		
88	By		
89	By		
90	By		
91	By		
92	By		
93	By		
94	By		
95	By		
96	By		
97	By		
98	By		
99	By		
100	By		

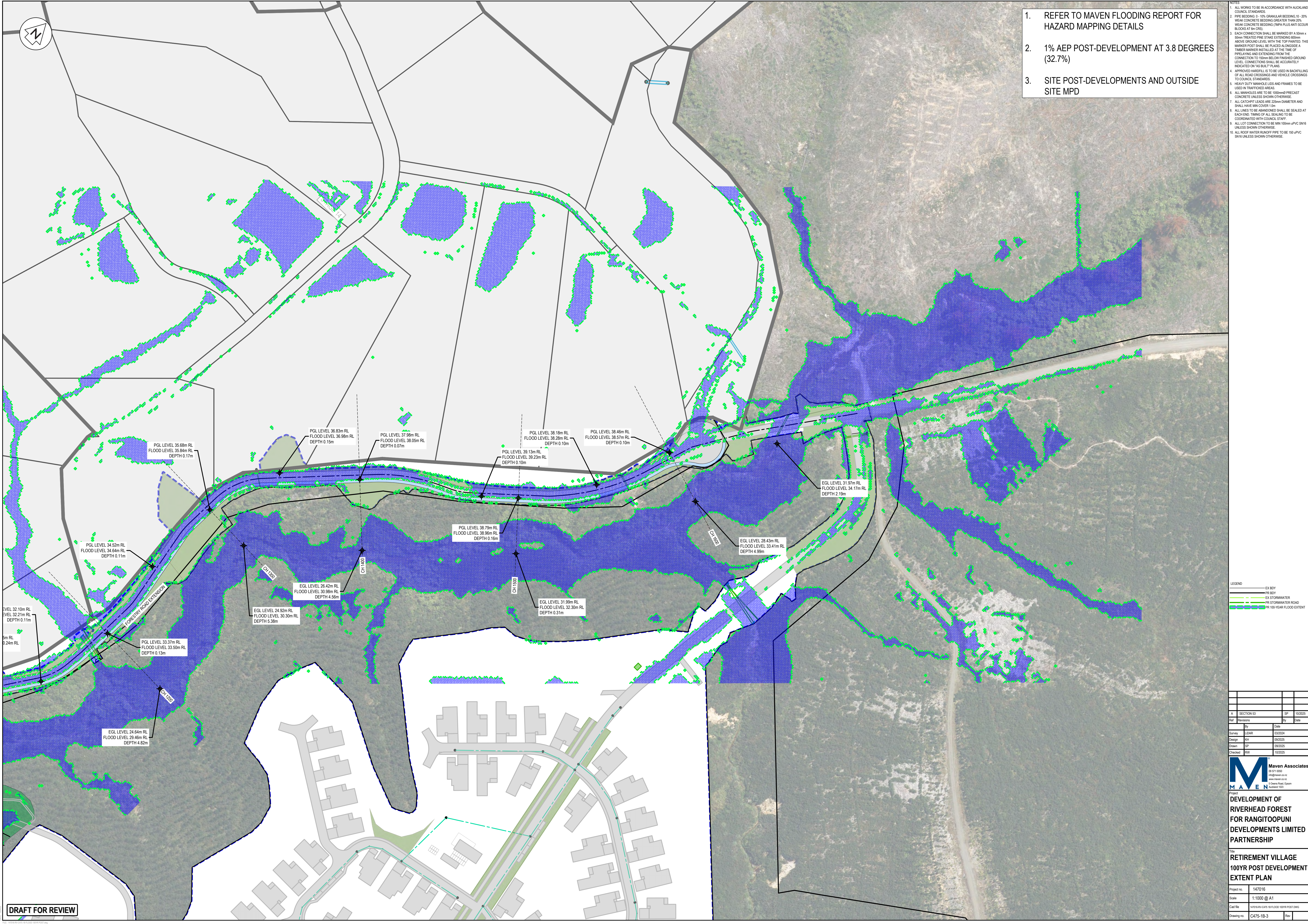
Maven Associates
06 571 0502
maven@ma.co.nz
www.maven.co.nz
3 Chelms Road, Epsom
Auckland 1051

DEVELOPMENT OF RIVERHEAD FOREST FOR RANGITOOPUNI DEVELOPMENTS LIMITED PARTNERSHIP

RETIREMENT VILLAGE 1% AEP POST DEVELOPMENT FLOOD PLAN

Project no: 147016
Scale: 1:1000 @ A1
Cad file: H018449-C475-1B FLOOD 100YR POST DWG
Drawing no: C475-1B-2 Rev

DRAFT FOR REVIEW



1. REFER TO MAVEN FLOODING REPORT FOR HAZARD MAPPING DETAILS
2. 1% AEP POST-DEVELOPMENT AT 3.8 DEGREES (32.7%)
3. SITE POST-DEVELOPMENTS AND OUTSIDE SITE MPD

- NOTES
1. ALL WORKS TO BE IN ACCORDANCE WITH AUCKLAND COUNCIL STANDARDS
 2. PIPE BEDDING: 0 - 10% GRANULAR BEDDING, 10 - 20% WEAK CONCRETE BEDDING GREATER THAN 20% WEAK CONCRETE BEDDING (DIPA PLUS ANTI SCOUR BLOCKS AT 6m CRS)
 3. EACH CONNECTION SHALL BE MARKED BY A 50mm x 50mm TREATED PINE STAKE EXTENDING 600mm ABOVE GROUND LEVEL WITH THE TOP PAINTED THIS MARKER POST SHALL BE PLACED ALONGSIDE A TIMBER MARKER INSTALLED AT THE TIME OF PIPE LAYING AND EXTENDING FROM THE CONNECTION TO 150mm BELOW FINISHED GROUND LEVEL. CONNECTIONS SHALL BE ACCURATELY INDICATED ON 'AS BUILT' PLANS.
 4. APPROVED MANHOLE IS TO BE USED IN BACKFILLING OF ALL ROAD CROSSINGS AND VEHICLE CROSSINGS TO COUNCIL STANDARDS
 5. HEAVY DUTY MANHOLE LIDS AND FRAMES TO BE USED IN TRAFFICED AREAS
 6. ALL MANHOLES ARE TO BE 1500mm PRECAST CONCRETE UNLESS SHOWN OTHERWISE
 7. ALL CATCHPIPS LEADS ARE 25mm DIAMETER AND SHALL HAVE MIN COVER 1.0m
 8. ALL LINES TO BE ABANDONED SHALL BE SEALED AT EACH END. TAPPING OF ALL SEALING TO BE COORDINATED WITH COUNCIL STAFF.
 9. ALL LOT CONNECTION TO BE MIN 100mm uPVC S16 UNLESS SHOWN OTHERWISE
 10. ALL ROOF WATER RUNOFF PIPE TO BE 150 uPVC S16 UNLESS SHOWN OTHERWISE

- LEGEND
- EX BOY
 - PR BOY
 - EX STORMWATER
 - PR STORMWATER ROAD
 - PR 100-YEAR FLOOD EXTENT

A	SECTION 53	SP	10/2025
Rev	Revisions	By	Date
Survey	LEAD	03/2024	
Design	RH	09/2025	
Drawn	SP	09/2025	
Checked	RH	10/2025	



Project:
**RIVERHEAD FOREST
FOR RANGITOOPUNI
DEVELOPMENTS LIMITED
PARTNERSHIP**

Title:
**RETIREMENT VILLAGE
100YR POST DEVELOPMENT
EXTENT PLAN**

Project no.	147016
Scale	1:1000 @ A1
Cad file	W100YR-CA75-18-FLOOD-100YR-POST.DWG
Drawing no.	CA75-1B-3
Rev	