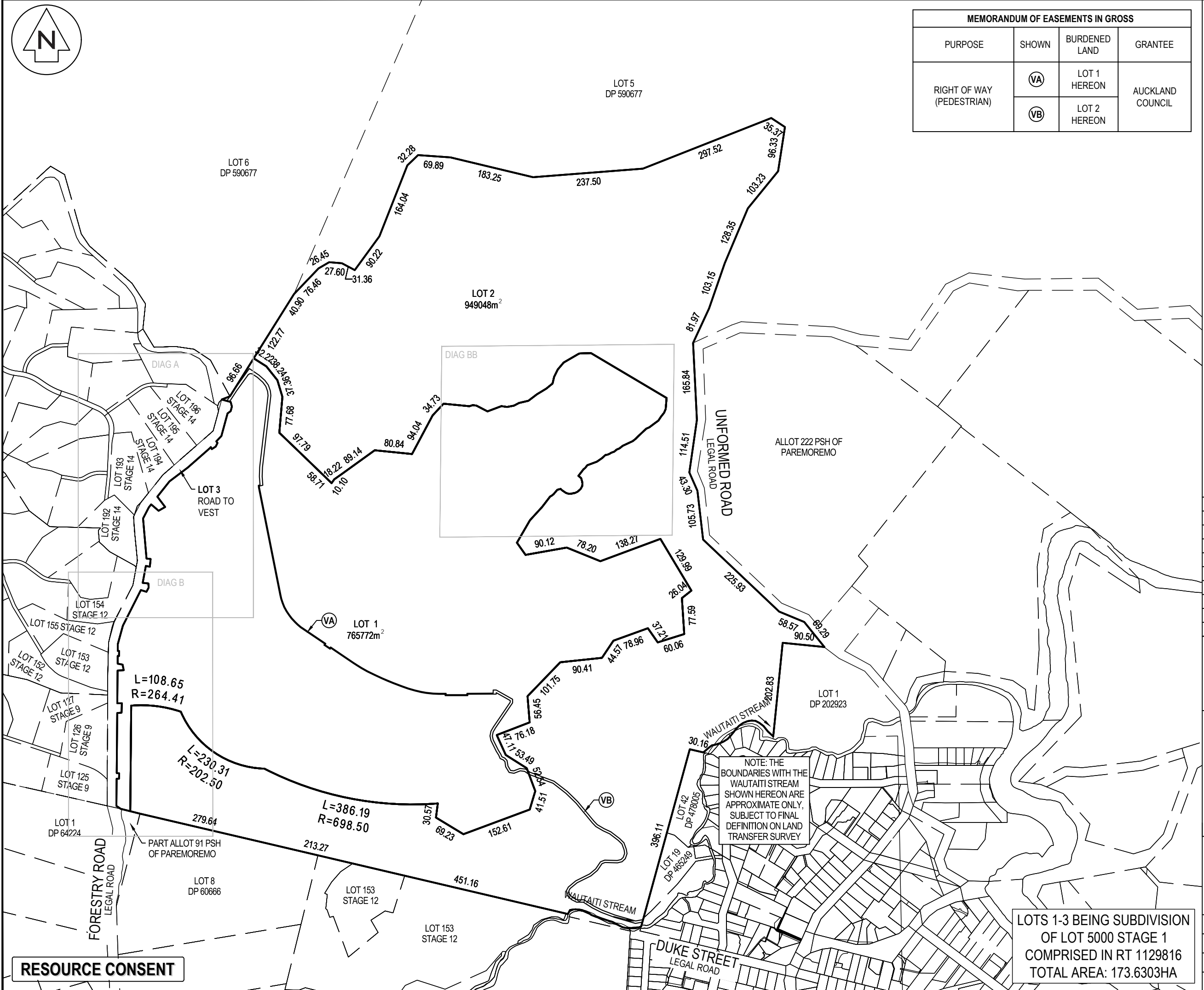




MEMORANDUM OF EASEMENTS IN GROSS			
PURPOSE	SHOWN	BURDENED LAND	GRANTEE
RIGHT OF WAY (PEDESTRIAN)	(VA)	LOT 1 HEREON	AUCKLAND COUNCIL
	(VB)	LOT 2 HEREON	

- NOTES
- ALL WORKS TO BE IN ACCORDANCE WITH AUCKLAND COUNCIL STANDARDS.
 - COORDINATES IN TERMS OF NZ GEODETIC DATUM MT EDEN 2000.
 - BOUNDARIES ARE SUBJECT TO FINAL SURVEY.



LEGEND

- EX BDY
- PR BDY
- EX EASEMENT
- RT
- RT
- REFERENCE TITLE
- PR EASEMENT

A	RESOURCE CONSENT	RM	03/2025
Rev	Description	By	Date
Survey	LIDAR		03/2022
Design	KH		03/2025
Drawn	RM		03/2022
Checked	TM		03/2025

M Maven Associates
09 571 0050
info@maven.co.nz
www.maven.co.nz
5 Owens Road, Epsom
Auckland 1023

Project

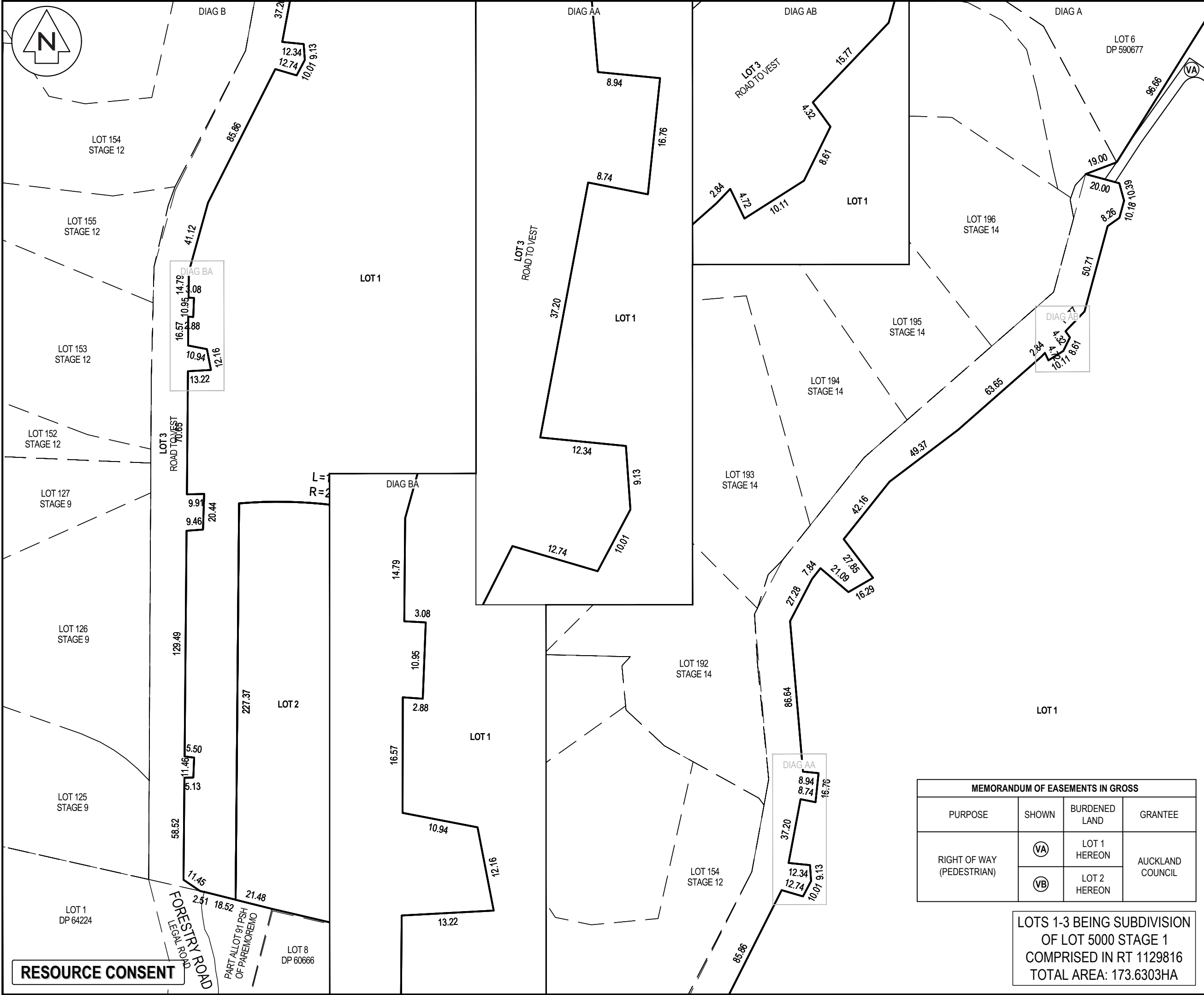
DEVELOPMENT OF RIVERHEAD FOREST FOR RANGITOOPUNI DEVELOPMENTS LIMITED PARTNERSHIP

Title

RETIREMENT VILLAGE PROPOSED SCHEME PLAN

Project no.	147016
Scale	1:7500
Cad file	147016-RV-C190 SCHEME PLAN.DWG
Drawing no.	C190-1-1
Rev	A

DATE: 4/03/25 FILE PATH: F:\Maven\PROJECTS\1016 - RIVERHEAD RETIREMENT VILLAGE\DWG\147016-RV-C190 SCHEME PLAN.DWG



NOTES

- ALL WORKS TO BE IN ACCORDANCE WITH AUCKLAND COUNCIL STANDARDS.
- COORDINATES IN TERMS OF NZ GEODETIC DATUM MT EDEN 2000.
- BOUNDARIES ARE SUBJECT TO FINAL SURVEY.

LEGEND

	EX BDY
	PR BDY
	EX EASEMENT
	RT
	RT
	REFERENCE TITLE
	PR EASEMENT

A	RESOURCE CONSENT	RM	03/2025
Rev	Description	By	Date
	By	Date	
Survey	LIDAR	03/2022	
Design	KH	03/2025	
Drawn	RM	03/2022	
Checked	##	03/2025	

Maven Associates
09 571 0050
info@maven.co.nz
www.maven.co.nz
5 Owens Road, Epsom
Auckland 1023

Project

**DEVELOPMENT OF
RIVERHEAD FOREST
FOR RANGITOOPUNI
DEVELOPMENTS LIMITED
PARTNERSHIP**

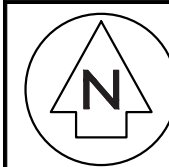
Title

**RETIREMENT VILLAGE
PROPOSED SCHEME
PLAN**

Project no.	147016		
Scale	1:2000		
Cad file	147016-RV-C190 SCHEME PLAN.DWG		
Drawing no.	C190-1-2	Rev	A

MEMORANDUM OF EASEMENTS IN GROSS			
PURPOSE	SHOWN	BURDENED LAND	GRANTEE
RIGHT OF WAY (PEDESTRIAN)	ⓅA	LOT 1 HEREON	AUCKLAND COUNCIL
	ⓅB	LOT 2 HEREON	

LOTS 1-3 BEING SUBDIVISION
OF LOT 5000 STAGE 1
COMPRISED IN RT 1129816
TOTAL AREA: 173.6303HA



LOT 2

DIA BB

LOT 1

RESOURCE CONSENT

LOTS 1-3 BEING SUBDIVISION
OF LOT 5000 STAGE 1
COMPRISED IN RT 1129816
TOTAL AREA: 173.6303HA

- NOTES
1. ALL WORKS TO BE IN ACCORDANCE WITH AUCKLAND COUNCIL STANDARDS.
 2. COORDINATES IN TERMS OF NZ GEODETIC DATUM MT EDEN 2000.
 3. BOUNDARIES ARE SUBJECT TO FINAL SURVEY.

LEGEND

	EX BDY
	PR BDY
	EX EASEMENT
	RT
	REFERENCE TITLE
	PR EASEMENT

A	RESOURCE CONSENT	RM	03/2025
Rev	Description	By	Date
	By	Date	
Survey	LIDAR	03/2022	
Design	KH	03/2025	
Drawn	RM	03/2022	
Checked	TM	03/2025	



Maven Associates
09 571 0050
info@maven.co.nz
www.maven.co.nz
5 Owens Road, Epsom
Auckland 1023

Project

**DEVELOPMENT OF
RIVERHEAD FOREST
FOR RANGITOOPUNI
DEVELOPMENTS LIMITED
PARTNERSHIP**

Title

**RETIREMENT VILLAGE
PROPOSED SCHEME
PLAN**

Project no.	147016		
Scale	1:7500		
Cad file	147016-RV-C190 SCHEME PLAN.DWG		
Drawing no.	C190-1-3	Rev	A