

NORTHERN
SOLAR
FARM

STATION ROAD

STATION ROAD

HIGHGROVE AVENUE

CHESTNUT LANE

ELDONWOOD DRIVE

PEAKDALE DRIVE

PROPOSED
RETIREMENT VILLAGE

PROPOSED
SOUTHERN SOLAR FARM

STAGE 3

STAGE 2

STAGE 1

LOT 3 DP 463448

LOT 76 DP 597679

RESOURCE CONSENT

Notes

1. All works to be in accordance with Waikato Regional Council Erosion and Sediment Control: guidelines for soil disturbing activities TR 2009/02.
2. Co-ordinates in terms of NZ Geodetic Datum NZTM 2000.
3. Levels in terms of New Zealand Vertical Datum 2016.
4. Benchmark: IT I DPS 29877 RL: 65.51.
5. Boundaries are subject to final survey.
6. It is the Contractors responsibility to locate all services that may be affected by his operations.
7. The Contractors shall obtain all necessary approval from utility operators before commencing work under or near their services.
8. Contours are shown at 0.5m minor and 2.5m major.

Legend

- EX BDY
- PR BDY
- PR MAJOR CONTOUR
- PR MINOR CONTOUR
- PR EXTENT WORK
- PR STOCKPILES

C	FAST TRACK APP	MKS	06/2025
B	FAST TRACK APP	MKS	05/2025
A	FAST TRACK APP	DJM	04/2025
Rev	Description	By	Date
		By	Date
Survey	MAVEN		05/2024
Design	MKS		10/2024
Drawn	MKS		10/2024
Checked	DJM		06/2025



Maven Waikato
07 242 0601
info@maven.co.nz
www.maven.co.nz
Level 1 286 Victoria Street, Hamilton
New Zealand

Project
**ASHBOURNE
RESIDENTIAL
FOR
MATAMATA
DEVELOPMENTS LTD**

Title
**PROPOSED
CONTOUR
OVERVIEW PLAN**

Project no.	289001		
Scale	1:5000 @ A3		
Cad file	C200-EARTHWORKS.DWG		
Drawing no.	C200	Rev	C

DATE: 6/25/25 FILEPATH: F:\MAVEN\HAMILTON\6 PROJECTS\289001 - STATION ROAD\ DRAWING\11. ASHBORNE RESIDENTIAL\2025\EARTHWORKS.DWG



STAGE 2

STAGE 1

ELDONWOOD DRIVE

PEAKEDALE DRIVE

LOT 77
DP 07627

- Notes
1. All works to be in accordance with Waikato Regional Council Erosion and Sediment Control: guidelines for soil disturbing activities TR 2009/02.
 2. Co-ordinates in terms of NZ Geodetic Datum NZTM 2000.
 3. Levels in terms of New Zealand Vertical Datum 2016.
 4. Benchmark: IT I DPS 29877 RL: 65.51.
 5. Boundaries are subject to final survey.
 6. It is the Contractors responsibility to locate all services that may be affected by his operations.
 7. The Contractors shall obtain all necessary approval from utility operators before commencing work under or near their services.
 8. Contours are shown at 0.5m minor and 2.5m major.
 9. Sub-staging boundaries can be found from C230-1.

Legend

	EX BDY
	PR BDY
	PR MAJOR CONTOUR
	PR MINOR CONTOUR
	PR EXTENT WORK
	PR SUBSTAGE BDY

C	FAST TRACK APP	MKS	06/2025
B	FAST TRACK APP	MKS	05/2025
A	FAST TRACK APP	DJM	04/2025
Rev	Description	By	Date
		By	Date
Survey	MAVEN		05/2024
Design	MKS		10/2024
Drawn	MKS		10/2024
Checked	DJM		06/2025



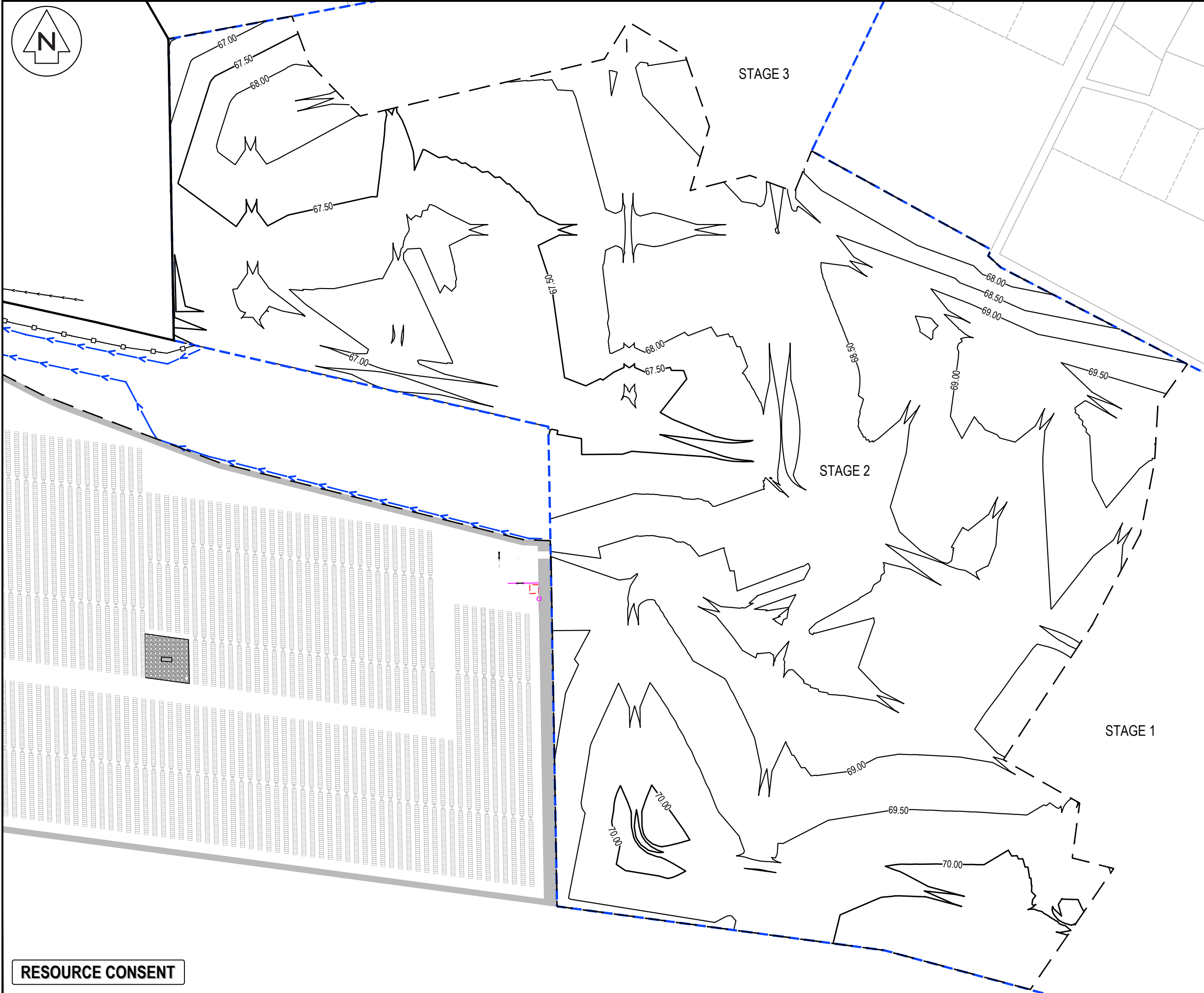
Maven Waikato
07 242 0601
info@maven.co.nz
www.maven.co.nz
Level 1 286 Victoria Street, Hamilton
New Zealand

Project
**ASHBOURNE
RESIDENTIAL
FOR
MATAMATA
DEVELOPMENTS LTD**

Title
**PROPOSED STAGE 1
CONTOUR PLAN**

Project no.	289001		
Scale	1:2000 @ A3		
Cad file	C200-EARTHWORKS.DWG		
Drawing no.	C201	Rev	C

RESOURCE CONSENT



- Notes
1. All works to be in accordance with Waikato Regional Council Erosion and Sediment Control: guidelines for soil disturbing activities TR 2009/02.
 2. Co-ordinates in terms of NZ Geodetic Datum NZTM 2000.
 3. Levels in terms of New Zealand Vertical Datum 2016.
 4. Benchmark: IT I DPS 29877 RL: 65.51.
 5. Boundaries are subject to final survey.
 6. It is the Contractors responsibility to locate all services that may be affected by his operations.
 7. The Contractors shall obtain all necessary approval from utility operators before commencing work under or near their services.
 8. Contours are shown at 0.5m minor and 2.5m major.
 9. Sub-staging boundaries can be found from C230-2.

Legend

	EX BDY
	PR BDY
	PR MAJOR CONTOUR
	PR MINOR CONTOUR
	PR EXTENT WORK
	PR SUBSTAGE BDY

C	FAST TRACK APP	MKS	06/2025
B	FAST TRACK APP	DJM	05/2025
A	FAST TRACK APP	DJM	04/2025
Rev	Description	By	Date
		By	Date
Survey	MAVEN		05/2024
Design	MKS		10/2024
Drawn	MKS		10/2024
Checked	DJM		06/2025



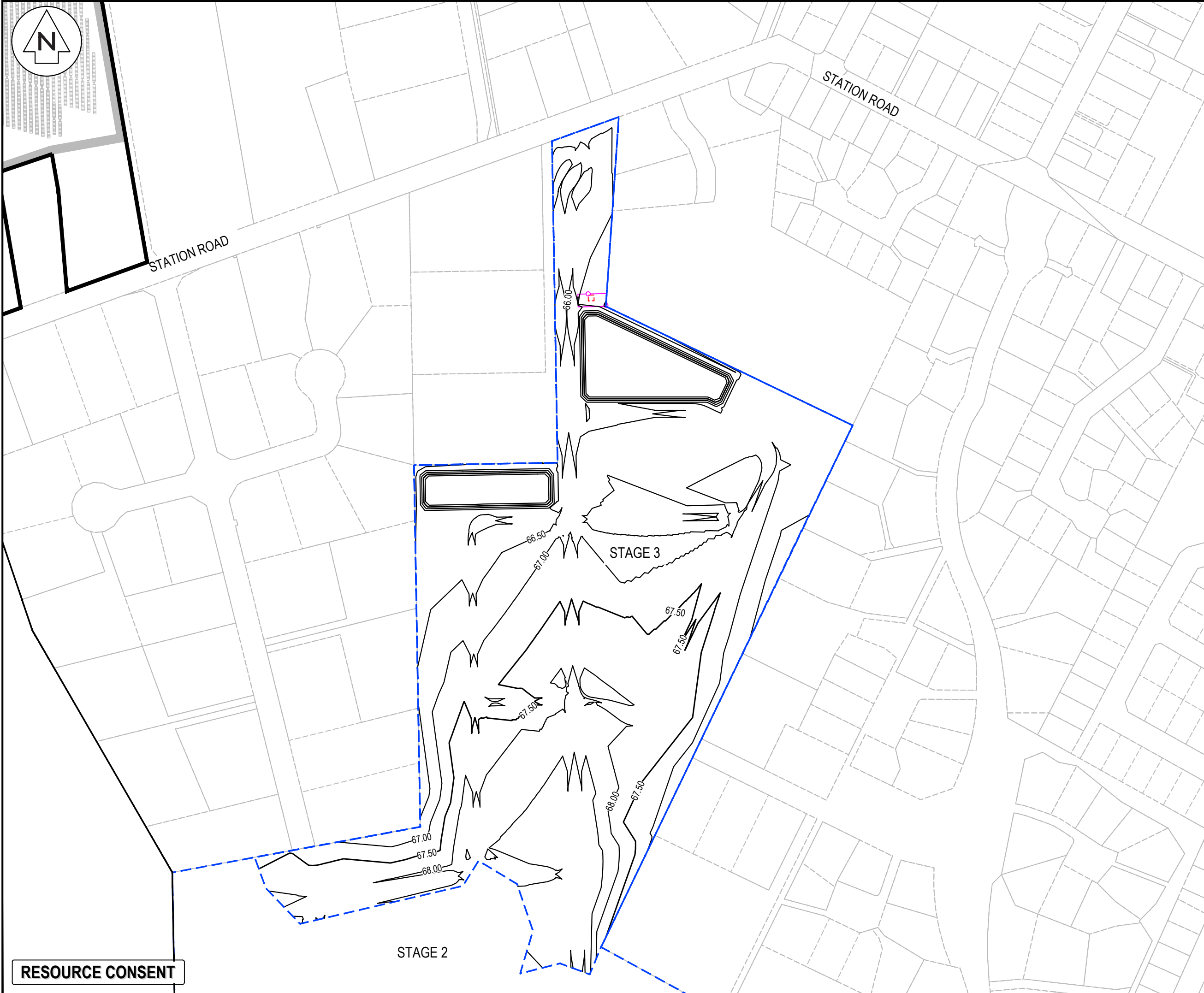
Maven Waikato
07 242 0601
info@maven.co.nz
www.maven.co.nz
Level 1 286 Victoria Street, Hamilton
New Zealand

Project
**ASHBOURNE
RESIDENTIAL
FOR
MATAMATA
DEVELOPMENTS LTD**

Title
**PROPOSED STAGE 2
CONTOUR PLAN**

Project no.	289001		
Scale	1:2000 @ A3		
Cad file	C200-EARTHWORKS.DWG		
Drawing no.	C202	Rev	C

RESOURCE CONSENT



Notes

- All works to be in accordance with Waikato Regional Council Erosion and Sediment Control: guidelines for soil disturbing activities TR 2009/02.
- Co-ordinates in terms of NZ Geodetic Datum NZTM 2000.
- Levels in terms of New Zealand Vertical Datum 2016.
- Benchmark: IT I DPS 29877 RL: 65.51.
- Boundaries are subject to final survey.
- It is the Contractors responsibility to locate all services that may be affected by his operations.
- The Contractors shall obtain all necessary approval from utility operators before commencing work under or near their services.
- Contours are shown at 0.5m minor and 2.5m major.
- Sub-staging boundaries can be found from C230-3.

Legend

- EX BDY
- PR BDY
- PR MAJOR CONTOUR
- PR MINOR CONTOUR
- PR EXTENT WORK
- PR SUBSTAGE BDY

C	FAST TRACK APP	MKS	06/2025
B	FAST TRACK APP	DJM	05/2025
A	FAST TRACK APP	DJM	04/2025
Rev	Description	By	Date
		By	Date
Survey	MAVEN		05/2024
Design	MKS		10/2024
Drawn	MKS		10/2024
Checked	DJM		06/2025

Maven Waikato
07 242 0601
info@maven.co.nz
www.maven.co.nz
Level 1 286 Victoria Street, Hamilton
New Zealand

Project

**ASHBOURNE
RESIDENTIAL
FOR
MATAMATA
DEVELOPMENTS LTD**

Title

**PROPOSED STAGE 3
CONTOUR PLAN**

Project no.	289001		
Scale	1:3000 @ A3		
Cad file	C200-EARTHWORKS.DWG		
Drawing no.	C203	Rev	C



- Notes
1. All works to be in accordance with Waikato Regional Council Erosion and Sediment Control: guidelines for soil disturbing activities TR 2009/02.
 2. Co-ordinates in terms of NZ Geodetic Datum NZTM 2000.
 3. Levels in terms of New Zealand Vertical Datum 2016.
 4. Benchmark: IT I DPS 29877 RL: 65.51.
 5. Boundaries are subject to final survey.
 6. It is the Contractors responsibility to locate all services that may be affected by his operations.
 7. The Contractors shall obtain all necessary approval from utility operators before commencing work under or near their services.
 8. Contours are shown at 0.5m minor and 2.5m major.
 9. Discharge from SRP Pond to be relied on soakage unless specified.

Legend

---	EX BDY
---	PR MAJOR CONTOUR
---	PR MINOR CONTOUR
---	PR EXTENT WORK
---	PR CLEAN WATER
---	PR DIRTY WATER
---	ESC CATCHMENT BDY
---	PR STOCK PILES

C	FAST TRACK APP	MKS	06/2025
B	FAST TRACK APP	MKS	05/2025
A	FAST TRACK APP	DJM	04/2025
Rev	Description	By	Date
		By	Date
Survey	MAVEN		05/2024
Design	MKS		12/2024
Drawn	MKS		12/2024
Checked	DJM		06/2025

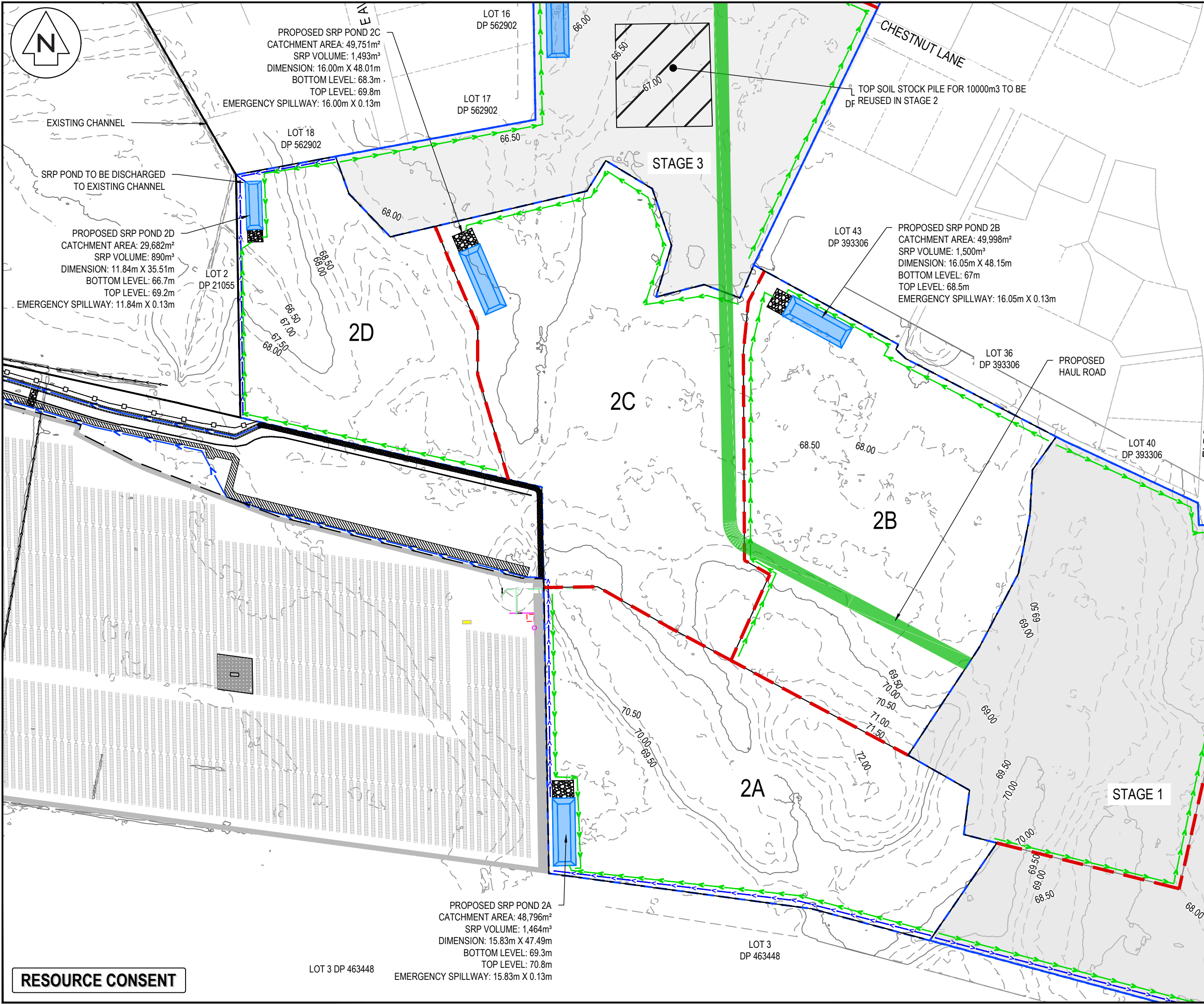


Project
**ASHBOURNE
RESIDENTIAL
FOR
MATAMATA
DEVELOPMENTS LTD**

Title
**PROPOSED STAGE 1
EROSION & SEDIMENT
CONTROL PLAN**

Project no.	289001
Scale	1:2500 @ A3
Cad file	C200-EARTHWORKS.DWG
Drawing no.	C230-1
Rev	C

RESOURCE CONSENT



- Notes
1. All works to be in accordance with Waikato Regional Council Erosion and Sediment Control: guidelines for soil disturbing activities TR 2009/02.
 2. Co-ordinates in terms of NZ Geodetic Datum NZTM 2000.
 3. Levels in terms of New Zealand Vertical Datum 2016.
 4. Benchmark: IT I DPS 29877 RL: 65.51.
 5. Boundaries are subject to final survey.
 6. It is the Contractors responsibility to locate all services that may be affected by his operations.
 7. The Contractors shall obtain all necessary approval from utility operators before commencing work under or near their services.
 8. Contours are shown at 0.5m minor and 2.5m major.
 9. Discharge from SRP Pond to be relied on soakage unless specified.

Legend

	EX BDY
	PR MAJOR CONTOUR
	PR MINOR CONTOUR
	PR EXTENT WORK
	PR CLEAN WATER
	PR DIRTY WATER
	ESC CATCHMENT BDY
	PR STOCK PILES

C	FAST TRACK APP	MKS	06/2025
B	FAST TRACK APP	MKS	05/2025
A	DRAFT	MKS	12/2024
Rev	Description	By	Date
		By	Date
Survey	MAVEN		05/2024
Design	MKS		12/2024
Drawn	MKS		12/2024
Checked	DJM		06/2025



Maven Waikato
07 242 0601
info@maven.co.nz
www.maven.co.nz
Level 1 286 Victoria Street, Hamilton
New Zealand

Project
**ASHBOURNE
RESIDENTIAL
FOR
MATAMATA
DEVELOPMENTS LTD**

Title
**PROPOSED STAGE 2
EROSION & SEDIMENT
CONTROL PLAN**

Project no.	289001
Scale	1:2500 @ A3
Cad file	C200-EARTHWORKS.DWG
Drawing no.	C230-2
Rev	C

RESOURCE CONSENT

LOT 3 DP 463448

EMERGENCY SPILLWAY: 15.83m X 0.13m

PROPOSED SRP POND 2A
CATCHMENT AREA: 48,796m²
SRP VOLUME: 1,464m³
DIMENSION: 15.83m X 47.49m
BOTTOM LEVEL: 69.3m
TOP LEVEL: 70.8m

LOT 3
DP 463448

PROPOSED SRP POND 2B
CATCHMENT AREA: 49,998m²
SRP VOLUME: 1,500m³
DIMENSION: 16.05m X 48.15m
BOTTOM LEVEL: 67m
TOP LEVEL: 68.5m
EMERGENCY SPILLWAY: 16.05m X 0.13m

LOT 36
DP 393306

PROPOSED
HAUL ROAD

LOT 40
DP 393306

LOT 43
DP 393306

STAGE 3

2D

2C

2B

2A

STAGE 1

PROPOSED SRP POND 2C
CATCHMENT AREA: 49,751m²
SRP VOLUME: 1,493m³
DIMENSION: 16.00m X 48.01m
BOTTOM LEVEL: 68.3m
TOP LEVEL: 69.8m
EMERGENCY SPILLWAY: 16.00m X 0.13m

LOT 17
DP 562902

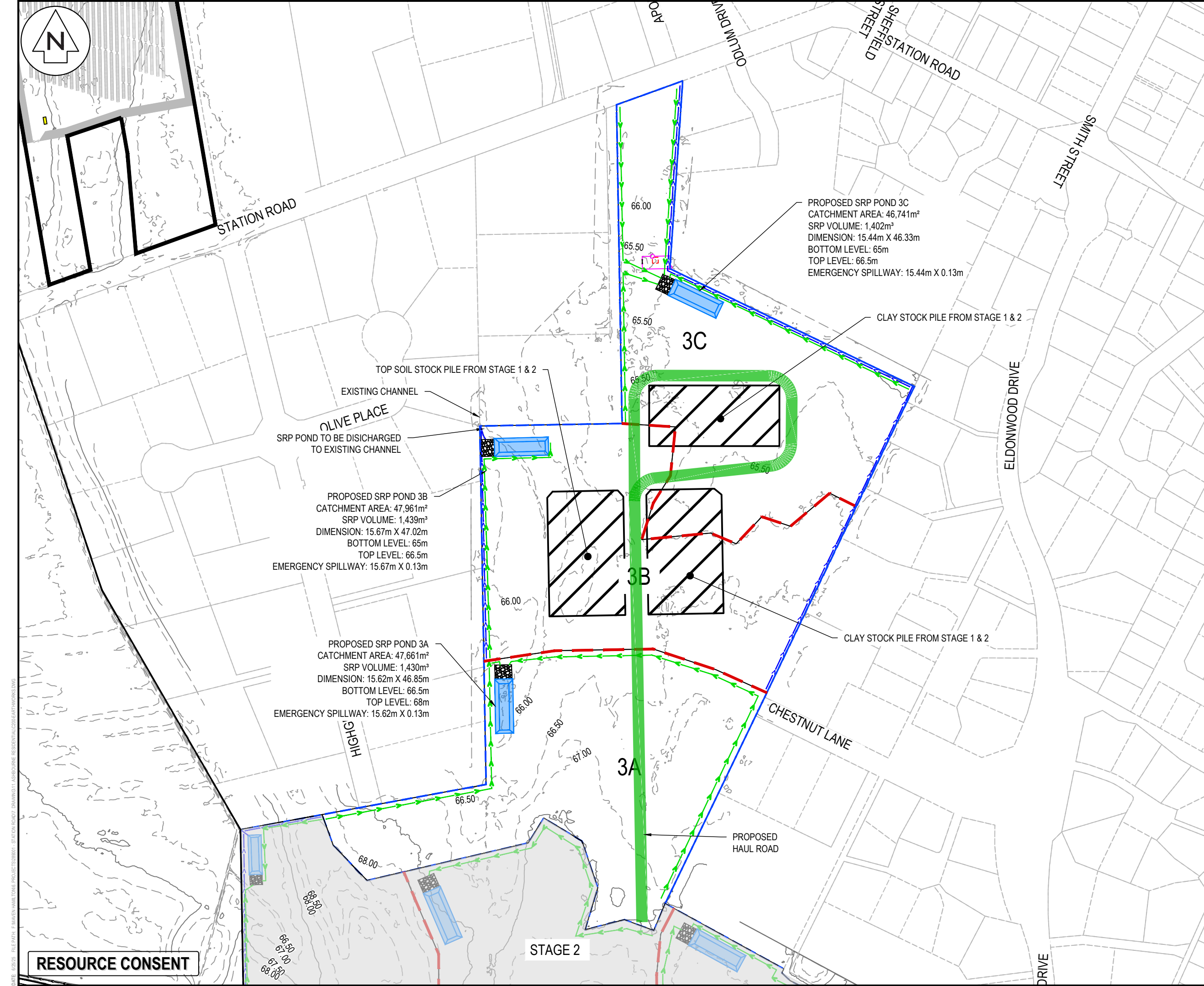
LOT 18
DP 562902

EXISTING CHANNEL

SRP POND TO BE DISCHARGED
TO EXISTING CHANNEL

PROPOSED SRP POND 2D
CATCHMENT AREA: 29,682m²
SRP VOLUME: 890m³
DIMENSION: 11.84m X 35.51m
BOTTOM LEVEL: 66.7m
TOP LEVEL: 69.2m
EMERGENCY SPILLWAY: 11.84m X 0.13m

LOT 2
DP 21055



- Notes
1. All works to be in accordance with Waikato Regional Council Erosion and Sediment Control: guidelines for soil disturbing activities TR 2009/02.
 2. Co-ordinates in terms of NZ Geodetic Datum NZTM 2000.
 3. Levels in terms of New Zealand Vertical Datum 2016.
 4. Benchmark: IT I DPS 29877 RL: 65.51.
 5. Boundaries are subject to final survey.
 6. It is the Contractors responsibility to locate all services that may be affected by his operations.
 7. The Contractors shall obtain all necessary approval from utility operators before commencing work under or near their services.
 8. Contours are shown at 0.5m minor and 2.5m major.
 9. Discharge from SRP Pond to be relied on soakage unless specified.

Legend

	EX BDY
	PR MAJOR CONTOUR
	PR MINOR CONTOUR
	PR EXTENT WORK
	PR CLEAN WATER
	PR DIRTY WATER
	ESC CATCHMENT BDY
	PR STOCK PILES

C	FAST TRACK APP	MKS	06/2025
B	FAST TRACK APP	MKS	05/2025
A	DRAFT	MKS	12/2024
Rev	Description	By	Date
		By	Date
Survey	MAVEN		05/2024
Design	MKS		12/2024
Drawn	MKS		05/2025
Checked	DJM		06/2025



Maven Waikato
07 242 0601
info@maven.co.nz
www.maven.co.nz
Level 1 286 Victoria Street, Hamilton
New Zealand

Project
**ASHBOURNE
RESIDENTIAL
FOR
MATAMATA
DEVELOPMENTS LTD**

Title
**PROPOSED STAGE 3
EROSION & SEDIMENT
CONTROL PLAN**

Project no.	289001		
Scale	1:3000 @ A3		
Cad file	C200-EARTHWORKS.DWG		
Drawing no.	C230-3	Rev	C

DATE: 6/25/25 FILEPATH: F:\MAVEN\HAMILTON\6 PROJECTS\289001 - STATION ROAD\DRAWING\11 ASHBORNE RESIDENTIAL\2025\EARTHWORKS.DWG

RESOURCE CONSENT



EX FLOOD LEVEL WITHIN STREAM= 63.47m (PER PRELIM FLOOD ASSESSMENT 4/10/24 MAVEN)

SPILLWAY FROM CLEAN WATER DIVERSION.

CLEAN WATER DIVERSION CHANNEL

CLEAN WATER DISCHARGE FROM FARM DRAINS

FUTURE CLEAN WATER DIVERSION PATH

PERMANENT DAM TO ACT AS SEDIMENT RETENTION POND (SRP) FOR FUTURE CONSTRUCTION. REFER DRAWING C250

CLEAN WATER DIVERSION TO BYPASS CONSTRUCTION AREA.

GREEN WAY LOW FLOW DRAIN

SILT FENCE

- Notes
1. All works to be in accordance with Waikato Regional Council Erosion and Sediment Control: guidelines for soil disturbing activities TR 2009/02.
 2. Co-ordinates in terms of NZ Geodetic Datum NZTM 2000.
 3. Levels in terms of New Zealand Vertical Datum 2016.
 4. Benchmark: IT I DPS 29877 RL: 65.51.
 5. Boundaries are subject to final survey.
 6. It is the Contractors responsibility to locate all services that may be affected by his operations.
 7. The Contractors shall obtain all necessary approval from utility operators before commencing work under or near their services.
 8. Contours are shown at 0.5m minor and 2.5m major.
 9. Discharge from SRP Pond to be relied on soakage unless specified.

Legend

	EX BDY
	PR MAJOR CONTOUR
	PR MINOR CONTOUR
	PR EXTENT WORK
	PR CLEAN WATER
	PR DIRTY WATER
	PR DIRTY DAM / COFFER DAM
	PR SILT FENCE

C	FAST TRACK APP	NDL	06/2025
B	FAST TRACK APP	MKS	06/2025
A	FAST TRACK APP	NDL	05/2025
Rev	Description	By	Date
		By	Date
Survey	MAVEN		05/2024
Design	NDL		05/2025
Drawn	NDL		05/2025
Checked	DJM		06/2025

M Maven Waikato
07 242 0601
info@maven.co.nz
www.maven.co.nz
Level 1 286 Victoria Street, Hamilton
New Zealand

Project
**ASHBOURNE
RESIDENTIAL
FOR
MATAMATA
DEVELOPMENTS LTD**

Title
**PROPOSED GREENWAY
EROSION & SEDIMENT
CONTROL PLAN STAGE 1**

Project no.	289001		
Scale	1:500 @ A3		
Cad file	C200-EARTHWORKS.DWG		
Drawing no.	C230-4	Rev	C

RESOURCE CONSENT

DATE: 6/25/25 FILEPATH: F:\MAVEN\HAMITON\6 PROJECTS\289001 - STATION ROAD\7 DRAWING\11 ASHBORNE RESIDENTIAL\200-EARTHWORKS.DWG



CONNECT CLEAN WATER DIVERSION TO DISCHARGE IN STAGE 1

DAM TO BE USED IN STAGE 2 AS SEDIMENT RETENTION POND (SRP) TO SERVICE 1Ha WORKING AREA
CATCHMENT AREA: 10,000m²
SRP VOLUME: 300m³
BOTTOM LEVEL: 64.78m
TOP LEVEL: 66.0m

CLEAN WATER DIVERSION CHANNEL

CLEAN WATER DISCHARGE FROM FARM DRAIN

CLEAN WATER DIVERSION CHANNEL

GREEN WAY LOW FLOW DRAIN

CLEAN WATER DIVERSION TO BYPASS CONSTRUCTION AREA.

CLEAN WATER DISCHARGE FROM FARM DRAIN (FD1)

CLEAN WATER DISCHARGE FROM FARM DRAIN (FD2)

AT COMPLETION OF STAGE 2 DAM TO BE REFURBISHED AS COFFER DAM TO ALLOW FOR LOW FLOWS

CONNECT CLEAN WATER DIVERSION TO STAGE 1

Notes

1. All works to be in accordance with Waikato Regional Council Erosion and Sediment Control: guidelines for soil disturbing activities TR 2009/02.
2. Co-ordinates in terms of NZ Geodetic Datum NZTM 2000.
3. Levels in terms of New Zealand Vertical Datum 2016.
4. Benchmark: IT I DPS 29877 RL: 65.51.
5. Boundaries are subject to final survey.
6. It is the Contractors responsibility to locate all services that may be affected by his operations.
7. The Contractors shall obtain all necessary approval from utility operators before commencing work under or near their services.
8. Contours are shown at 0.5m minor and 2.5m major.
9. Discharge from SRP Pond to be relied on soakage unless specified.

Legend

- EX BDY
- PR MAJOR CONTOUR
- PR MINOR CONTOUR
- PR EXTENT WORK
- PR CLEAN WATER
- PR DIRTY WATER
- PR DIRTY DAM / COFFER DAM
- PR SILT FENCE

C	FAST TRACK APP	NDL	06/2025
B	FAST TRACK APP	MKS	06/2025
A	FAST TRACK APP	NDL	05/2025
Rev	Description	By	Date
		By	Date
Survey	MAVEN		05/2024
Design	NDL		05/2025
Drawn	NDL		06/2025
Checked	DJM		06/2025

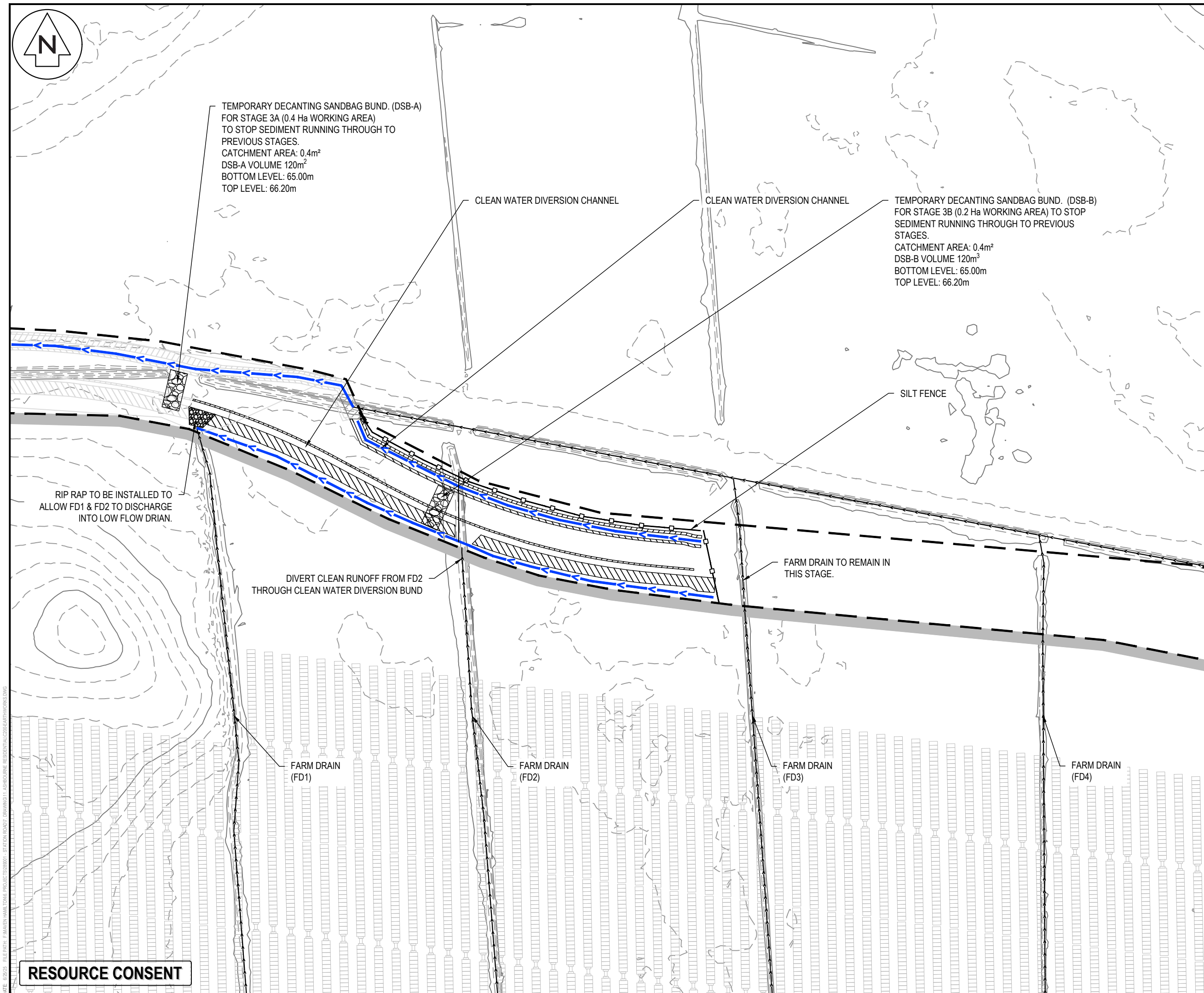
M Maven Waikato
07 242 0601
info@maven.co.nz
www.maven.co.nz
Level 1 286 Victoria Street, Hamilton
New Zealand

Project
**ASHBOURNE
RESIDENTIAL
FOR
MATAMATA
DEVELOPMENTS LTD**

Title
**PROPOSED GREENWAY
EROSION & SEDIMENT
CONTROL PLAN STAGE 2**

Project no.	289001
Scale	1:1000 @ A3
Cad file	C200-EARTHWORKS.DWG
Drawing no.	C230-5
Rev	C

RESOURCE CONSENT



Notes

1. All works to be in accordance with Waikato Regional Council Erosion and Sediment Control: guidelines for soil disturbing activities TR 2009/02.
2. Co-ordinates in terms of NZ Geodetic Datum NZTM 2000.
3. Levels in terms of New Zealand Vertical Datum 2016.
4. Benchmark: IT I DPS 29877 RL: 65.51.
5. Boundaries are subject to final survey.
6. It is the Contractors responsibility to locate all services that may be affected by his operations.
7. The Contractors shall obtain all necessary approval from utility operators before commencing work under or near their services.
8. Contours are shown at 0.5m minor and 2.5m major.
9. Discharge from SRP Pond to be relied on seepage unless specified.

Legend

-
- EX BDY
 PR MAJOR CONTOUR
 PR MINOR CONTOUR
 PR EXTENT WORK
 PR CLEAN WATER
 PR DIRTY WATER
 PR DIRTY DAM / COFFER DAM
 PR SILT FENCE

C	FAST TRACK APP	NDL	06/2025
B	FAST TRACK APP	MKS	06/2025
A	FAST TRACK APP	NDL	05/2025
Rev	Description	By	Date
	By	Date	
Survey	MAVEN	05/2024	
Design	NDL	05/2025	
Drawn	NDL	06/2025	
Checked	DJM	06/2025	



Project	
---------	--

**ASHBOURNE
RESIDENTIAL
FOR
MATAMATA
DEVELOPMENTS LTD**

[illegible]

PROPOSED GREENWAY EROSION & SEDIMENT CONTROL PLAN STAGE 3A

Project no.	289001		
Scale	1:1000 @ A3		
Cad file	C200-EARTHWORKS.DWG		
Drawing no.	C230-6	Rev	C



TEMPORARY DECANTING SANDBAG BUND. (DSB-B) REFER C230-6

TEMPORARY DECANTING SANDBAG BUND. (SRP-C) TO STOP SEDIMENT RUNNING THROUGH TO PREVIOUS STAGES.
CATCHMENT AREA: 2,500m²
DSB VOLUME: 75m³
BOTTOM LEVEL: 65.17m
TOP LEVEL: 66.37m

CLEAN WATER DIVERSION CHANNEL TO CONNECT TO PREVIOUS STAGE

- CONTINUE THIS PROCESS FOR EACH OF THE FARM DRAINS
- CREATE RIPRAP PAD FROM FARM DRAIN TO LOW FLOW DRAIN ONCE PREVIOUS STAGES ARE COMPLETE.
 - REMOVE DOWN STREAM CLEAN WATER BUND.
 - DIVERTING SINGLE UPSTREAM FARM DRAIN THROUGH CLEAN WATER DIVERSION BUND AROUND CONSTRUCTION AREA.
 - INSTALL TEMPORARY DECANTING SANDBAG BUND. TO REDUCE DOWN STREAM FLOWS IN LARGE WEATHER EVENTS TO PROTECT CONSTRUCTED GREEN WAY
 - COMPLETE STAGE FOR GREEN WAY CONSTRUCTION BETWEEN THE TWO FARM DRAINS.
 - ONCE COMPLETED COMPLETE PROCESS BETWEEN EACH OF THE 7 FARM DRAINS

SILT FENCE

FARM DRAIN TO REMAIN IN THIS STAGE.

RIP RAP TO BE INSTALLED TO ALLOW FD2 TO DISCHARGE INTO LOW FLOW DRAIN.
DOWN STREAM CLEAN WATER BUND TO BE REMOVED.

DIVERT CLEAN FARM DRAIN TO CLEAN WATER DIVERSION BUND

FARM DRAIN (FD2)

FARM DRAIN (FD3)

FARM DRAIN (FD4)

FARM DRAIN (FD5)

RESOURCE CONSENT

Notes

1. All works to be in accordance with Waikato Regional Council Erosion and Sediment Control: guidelines for soil disturbing activities TR 2009/02.
2. Co-ordinates in terms of NZ Geodetic Datum NZTM 2000.
3. Levels in terms of New Zealand Vertical Datum 2016.
4. Benchmark: IT I DPS 29877 RL: 65.51.
5. Boundaries are subject to final survey.
6. It is the Contractors responsibility to locate all services that may be affected by his operations.
7. The Contractors shall obtain all necessary approval from utility operators before commencing work under or near their services.
8. Contours are shown at 0.5m minor and 2.5m major.
9. Discharge from SRP Pond to be relied on soakage unless specified.

Legend

	EX BDY
	PR MAJOR CONTOUR
	PR MINOR CONTOUR
	PR EXTENT WORK
	PR CLEAN WATER
	PR DIRTY WATER
	PR DIRTY DAM / COFFER DAM
	PR SILT FENCE

C	FAST TRACK APP	NDL	06/2025
B	FAST TRACK APP	MKS	06/2025
A	FAST TRACK APP	NDL	05/2025
Rev	Description	By	Date
Survey	MAVEN	05/2024	
Design	NDL	05/2025	
Drawn	NDL	06/2025	
Checked	DJM	06/2025	



Project
**ASHBOURNE
RESIDENTIAL
FOR
MATAMATA
DEVELOPMENTS LTD**

Title
**PROPOSED GREENWAY
EROSION & SEDIMENT
CONTROL PLAN STAGE 3B**

Project no.	289001		
Scale	1:1000 @ A3		
Cad file	C200-EARTHWORKS.DWG		
Drawing no.	C230-7	Rev	C



TEMPORARY DECANTING SANDBAG BUND.
(DSB-E) TO STOP SEDIMENT RUNNING
THROUGH TO PREVIOUS STAGES.
CATCHMENT AREA: 2,500m²
DSB-E VOLUME: 75m³
BOTTOM LEVEL: 65.35m
TOP LEVEL: 66.55m

SILT FENCE

CLEAN WATER DIVERSION CHANNEL TO
CONNECT TO PREVIOUS STAGE

TEMPORARY DECANTING SANDBAG BUND.
(DSB-F) TO STOP SEDIMENT RUNNING
THROUGH TO PREVIOUS STAGES.
CATCHMENT AREA: 4,000m²
DSB-F VOLUME: 120m³
BOTTOM LEVEL: 65.44m
TOP LEVEL: 66.64m

CLEAN WATER DIVERSION
CHANNEL

RIP RAP TO BE INSTALLED TO
ALLOW FARM DRAIN TO DISCHARGE
INTO LOW FLOW DRAIN. DOWN
STREAM CLEAN WATER BUND TO BE
REMOVED.

DIVERT CLEAN FARM DRAIN TO CLEAN
WATER DIVERSION BUND

FARM DRAIN
(FD6)

FARM DRAIN
(FD7)

PROPOSED
HAUL ROAD

MAINTENANCE TRACK

STORMWATER BASIN

Notes

1. All works to be in accordance with Waikato Regional Council Erosion and Sediment Control: guidelines for soil disturbing activities TR 2009/02.
2. Co-ordinates in terms of NZ Geodetic Datum NZTM 2000.
3. Levels in terms of New Zealand Vertical Datum 2016.
4. Benchmark: IT I DPS 29877 RL: 65.51.
5. Boundaries are subject to final survey.
6. It is the Contractors responsibility to locate all services that may be affected by his operations.
7. The Contractors shall obtain all necessary approval from utility operators before commencing work under or near their services.
8. Contours are shown at 0.5m minor and 2.5m major.
9. Discharge from SRP Pond to be relied on soakage unless specified.

Legend

	EX BDY
	PR MAJOR CONTOUR
	PR MINOR CONTOUR
	PR EXTENT WORK
	PR CLEAN WATER
	PR DIRTY WATER
	ESC CATCHMENT BDY
	PR STOCK PILES

C	FAST TRACK APP	NDL	06/2025
B	FAST TRACK APP	MKS	06/2025
A	FAST TRACK APP	NDL	05/2025
Rev	Description	By	Date
Survey	MAVEN		05/2024
Design	NDL		05/2025
Drawn	NDL		06/2025
Checked	DJM		06/2025



Maven Waikato
07 242 0601
info@maven.co.nz
www.maven.co.nz
Level 1 286 Victoria Street, Hamilton
New Zealand

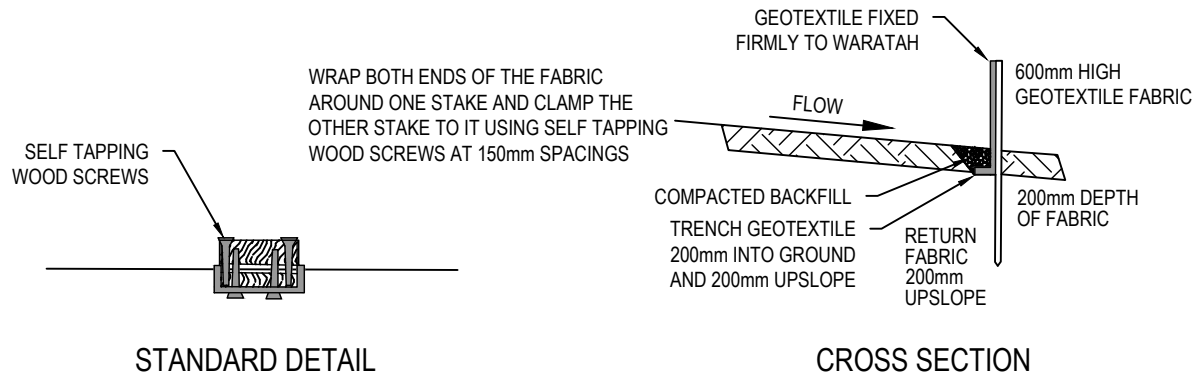
Project
**ASHBOURNE
RESIDENTIAL
FOR
MATAMATA
DEVELOPMENTS LTD**

Title
**PROPOSED GREENWAY
EROSION & SEDIMENT
STAGE 4**

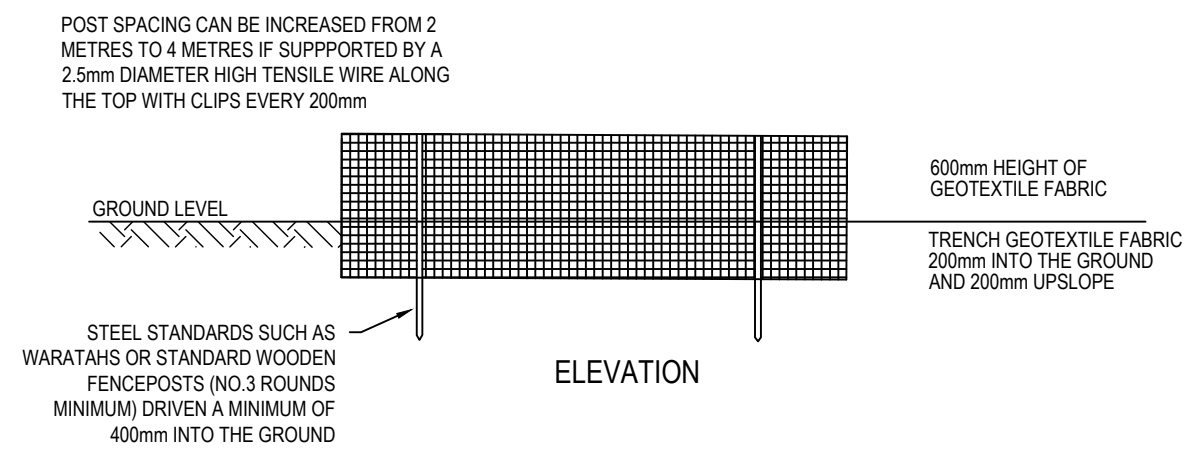
Project no.	289001		
Scale	1:2000 @ A3		
Cad file	C200-EARTHWORKS.DWG		
Drawing no.	C230-8	Rev	C

RESOURCE CONSENT

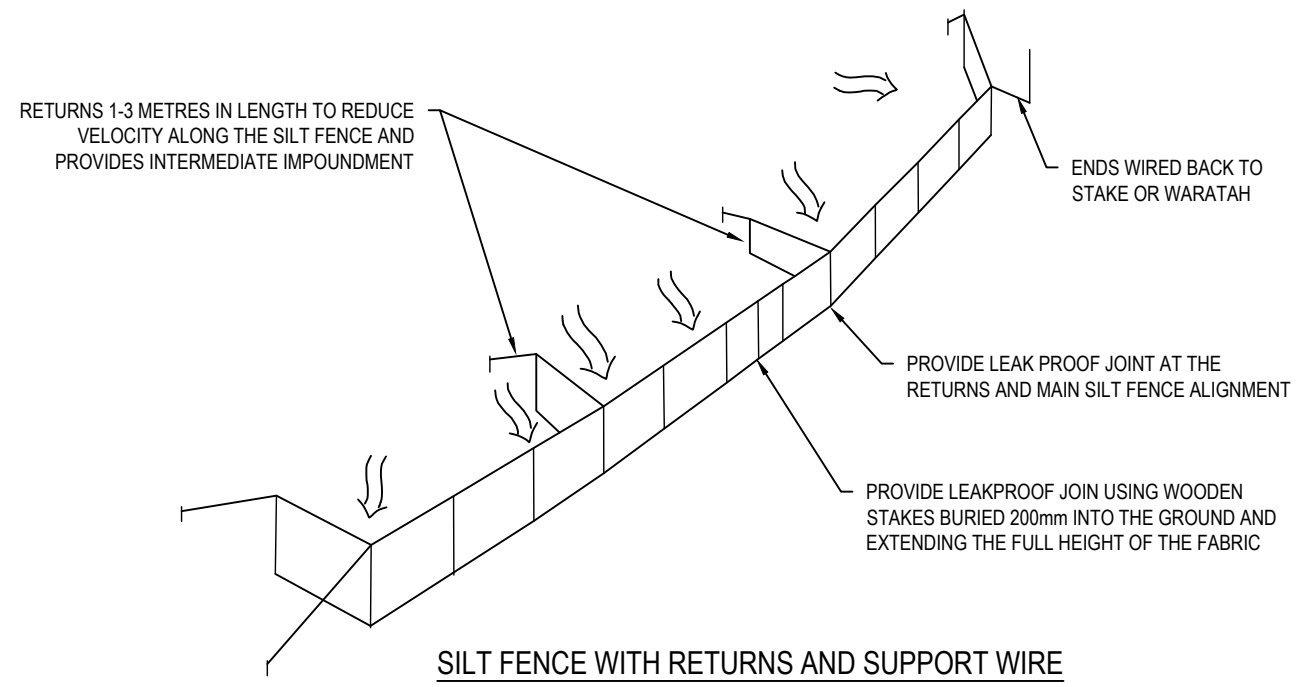
DATE: 6/25/25 FILEPATH: F:\MAVEN\HAMILTON\6. PROJECTS\289001 - STATION ROAD\ DRAWING\11. ASHBORNE RESIDENTIAL\C200-EARTHWORKS.DWG



FABRIC JOIN




ELEVATION



SILT FENCE WITH RETURNS AND SUPPORT WIRE

RESOURCE CONSENT

B	FAST TRACK APP	MKS	06/2025
A	DRAFT	MKS	12/2024
Rev	Description	By	Date
	By	Date	
Survey	MAVEN	05/2024	
Design	MKS	10/2024	
Drawn	MKS	10/2024	
Checked	DJM	06/2025	

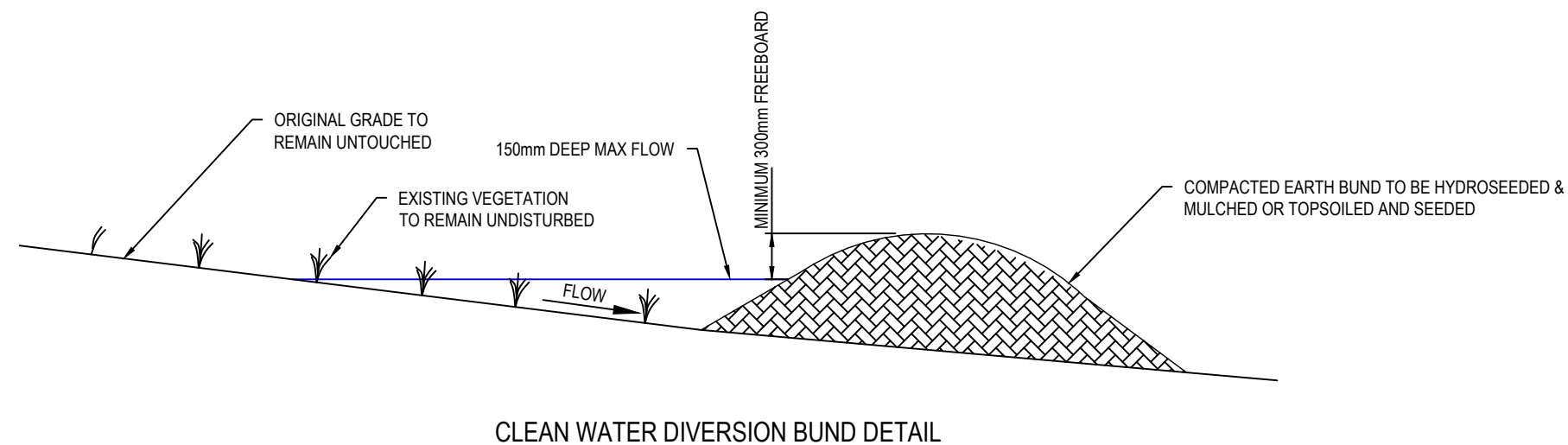
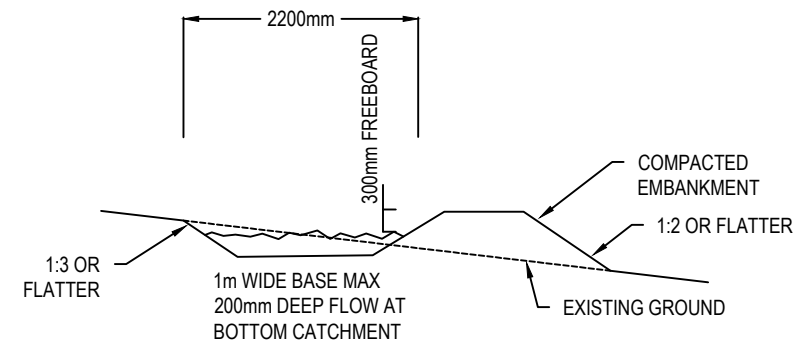
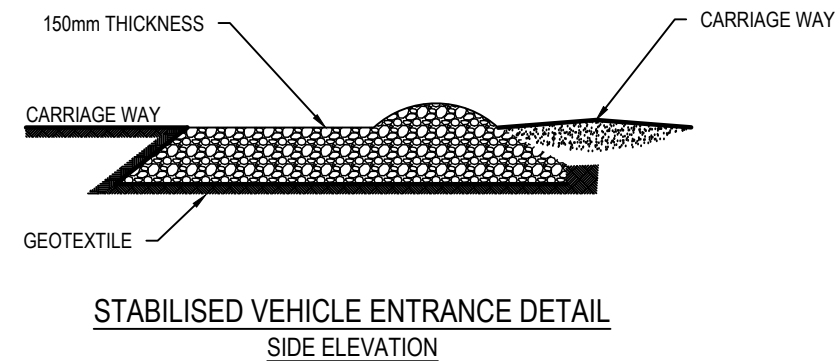
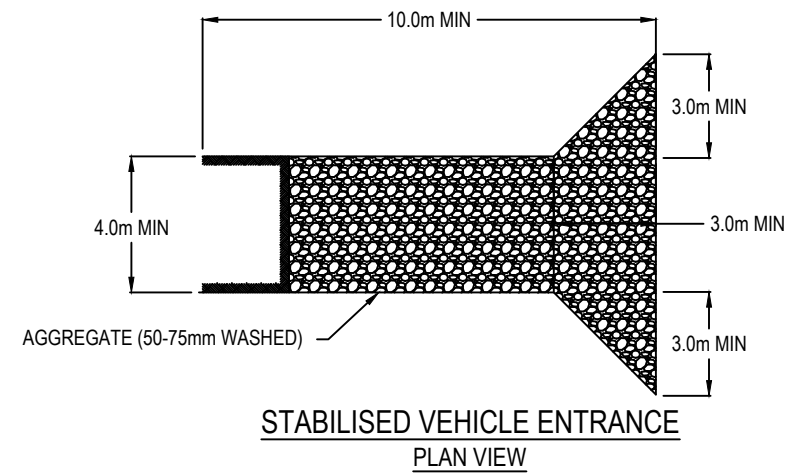


Maven Waikato
07 242 0601
info@maven.co.nz
www.maven.co.nz
Level 1 286 Victoria Street, Hamilton
New Zealand

Project
**ASHBOURNE
RESIDENTIAL
FOR
MATAMATA
DEVELOPMENTS LTD**

Title
**PROPOSED
EROSION & SEDIMENT
CONTROL DETAILS**

Project no.	289001		
Scale	-		
Cad file	C200-EARTHWORKS.DWG		
Drawing no.	C240-1	Rev	B



RESOURCE CONSENT

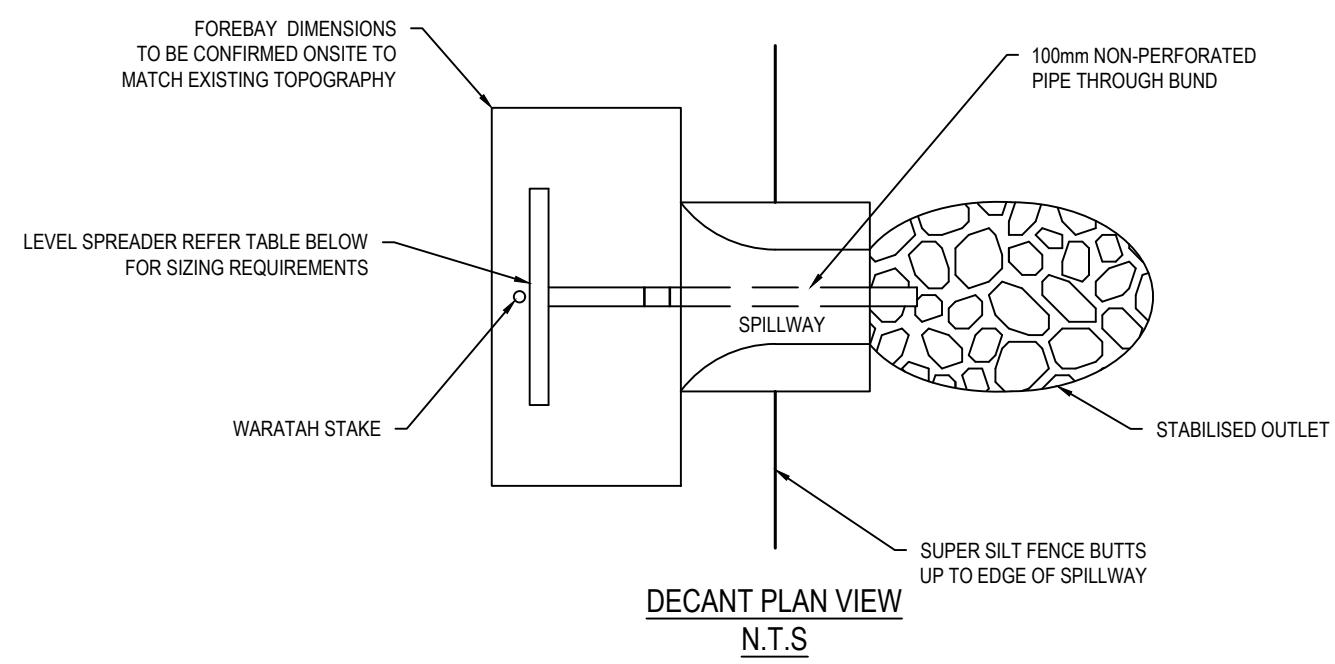
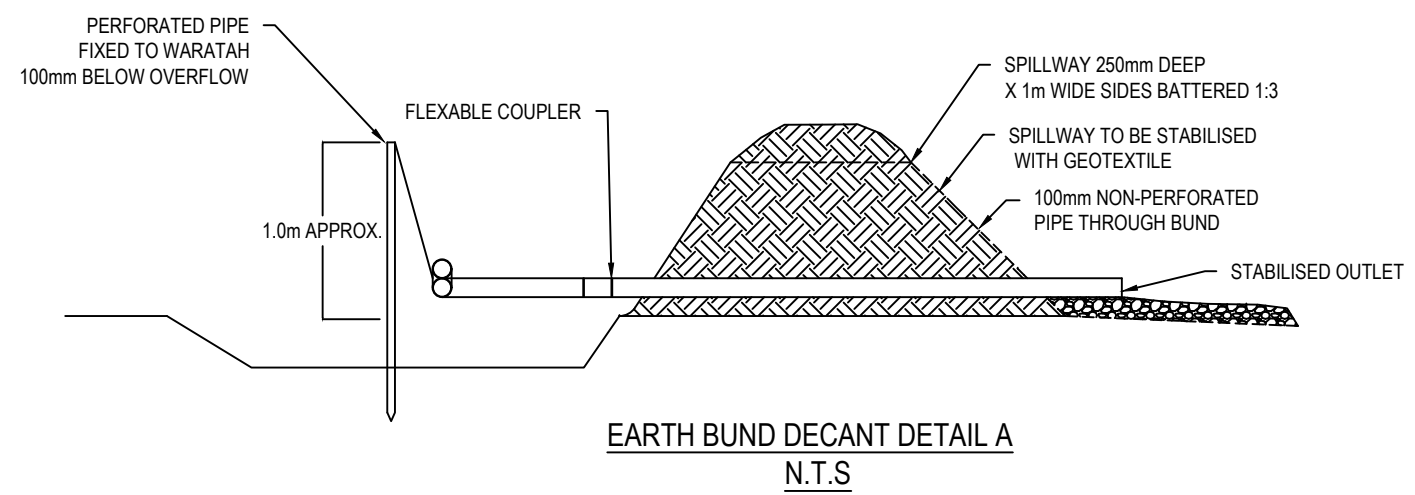
B	FAST TRACK APP	MKS	06/2025
A	DRAFT	MKS	12/2024
Rev	Description	By	Date
	By	Date	
Survey	MAVEN	05/2024	
Design	MKS	10/2024	
Drawn	MKS	10/2024	
Checked	DJM	06/2025	

M Maven Waikato
07 242 0601
info@maven.co.nz
www.maven.co.nz
Level 1 286 Victoria Street, Hamilton
New Zealand

Project
**ASHBOURNE
RESIDENTIAL
FOR
MATAMATA
DEVELOPMENTS LTD**

Title
**PROPOSED
EROSION & SEDIMENT
CONTROL DETAILS**

Project no.	289001
Scale	-
Cad file	C200-EARTHWORKS.DWG
Drawing no.	C240-2
Rev	B



LEVEL SPREADER DESIGN CRITERIA (20 YEAR STORM EVENT)				
DESIGN FLOW (m ³ /sec)	INLET WIDTH (m)	DEPTH (m)	END WIDTH (m)	LENGTH (mm)
0-0.3	3	150	1	3
0.3-0.6	5	180	1	7
0.6-0.9	7	220	1	10

B	FAST TRACK APP	MKS	06/2025
A	DRAFT	MKS	12/2024
Rev	Description	By	Date
	By	Date	
Survey	MAVEN	05/2024	
Design	MKS	10/2024	
Drawn	MKS	10/2024	
Checked	DJM	06/2025	

M

MAVEN

Maven Waikato

07 242 0601

info@maven.co.nz

www.maven.co.nz

Level 1 286 Victoria Street, Hamilton

New Zealand

Project
**ASHBOURNE
RESIDENTIAL
FOR
MATAMATA
DEVELOPMENTS LTD**

Title
**PROPOSED
EROSION & SEDIMENT
CONTROL DETAILS**

Project no.	289001		
Scale	-		
Cad file	C200-EARTHWORKS.DWG		
Drawing no.	C240-3	Rev	B

RESOURCE CONSENT

