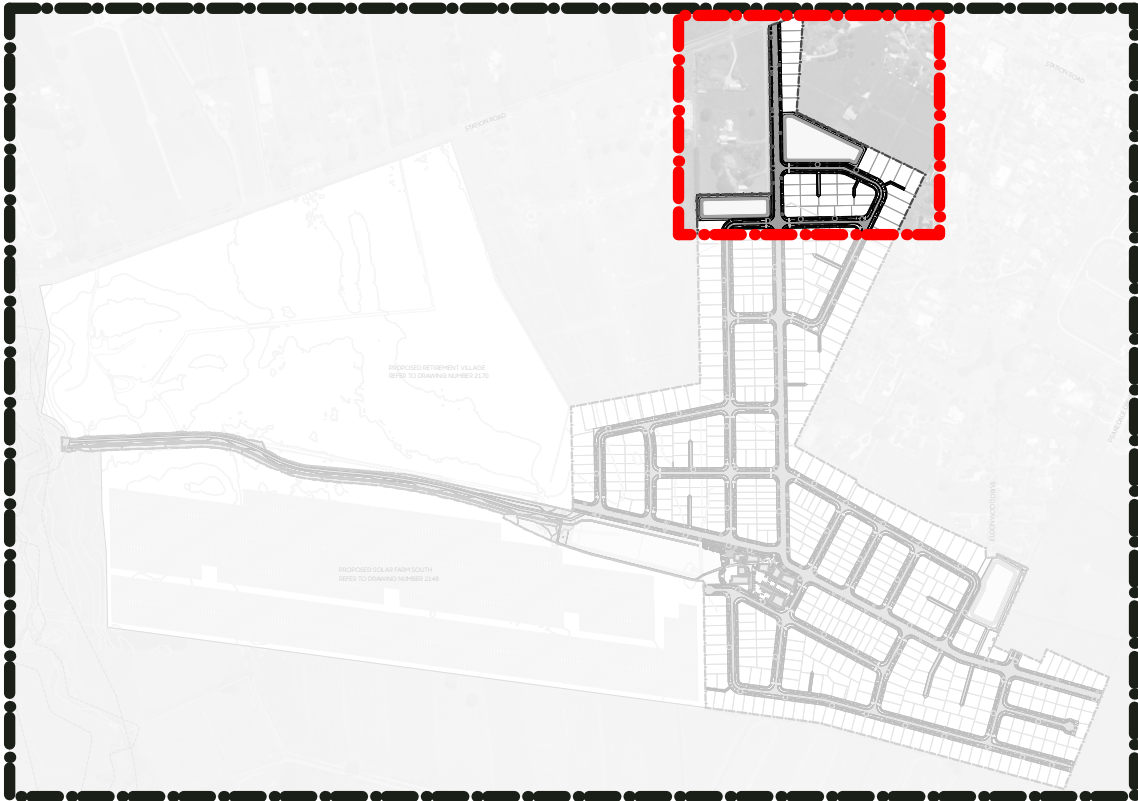


Code	Botanical Name	Common Name	Grade	Spacing
Specimen Trees - Streets				
1	Acer palmatum	Japanese maple	45L	Marked
2	Alectryon excelsus	titoki	45L	Marked
3	Carpinus betulus 'Fastigiata'	upright hornbeam	45L	Marked
4	Hoheria populnea	houhere	45L	Marked
5	Knightia excelsa	rewarewa	45L	Marked
6	Phyllocladus trichomanoides	tānekaha	45L	Marked
7	Plagianthus regius	manatu	45L	Marked
8	Prumnopitys ferruginea	miro	45L	Marked
9	Lagerstroemia indica	crape myrtle	45L	Marked
10	Quercus rubra	red oak	45L	Marked
11	Sophora microphylla	kōwhai	45L	Marked
12	Vitex lucens	pūriri	45L	Marked
RGM Rain Garden Planting Mix				
	Apodasmia similis	oloi	2L	0.75m
	Blechnum novae-zelandiae	kiokio	2L	0.75m
	Carex secta	pūrei	2L	0.75m
	Caprosma acerosa	sand Caprosma	2L	0.75m
	Corokia cotoneaster	korokio	2L	0.75m
	Dianella nigra	turutu	2L	0.75m
	Muehlenbeckia complexa	pohuehue	2L	0.75m
	Phormium cookianum	wharariki	2L	0.75m
	Pseudopanax crassifolius	horoeka	10L	1m
AP Amenity Planting Mix				
	Caprosma 'Hawera'	groundcover Caprosma	2L	1m
	Dianella nigra	turutu	2L	1m
	Hebe 'Wiri Mist'	shrubby Veronica	2L	1m
	Phormium cookianum	wharariki	2L	1m
Hardscape Surfaces				
	Standard concrete - Pedestrian & Vehicular	Standard concrete, 4kg black oxide per m3, broom finish		
	Exposed aggregate concrete - Vehicular	Standard concrete with Firth 'Mountain Burst' aggregate, exposed aggregate finish		
	Hoggin Limestone	Hoggin Limestone Gap 6		
	Bark mulch	Cambium bark mulch		
	Lawn	PGG Wrightson DuraVeg® Berm Mix		
	Asphalt	Sowing Rate: 30-50g/m2 By others		

LEGEND

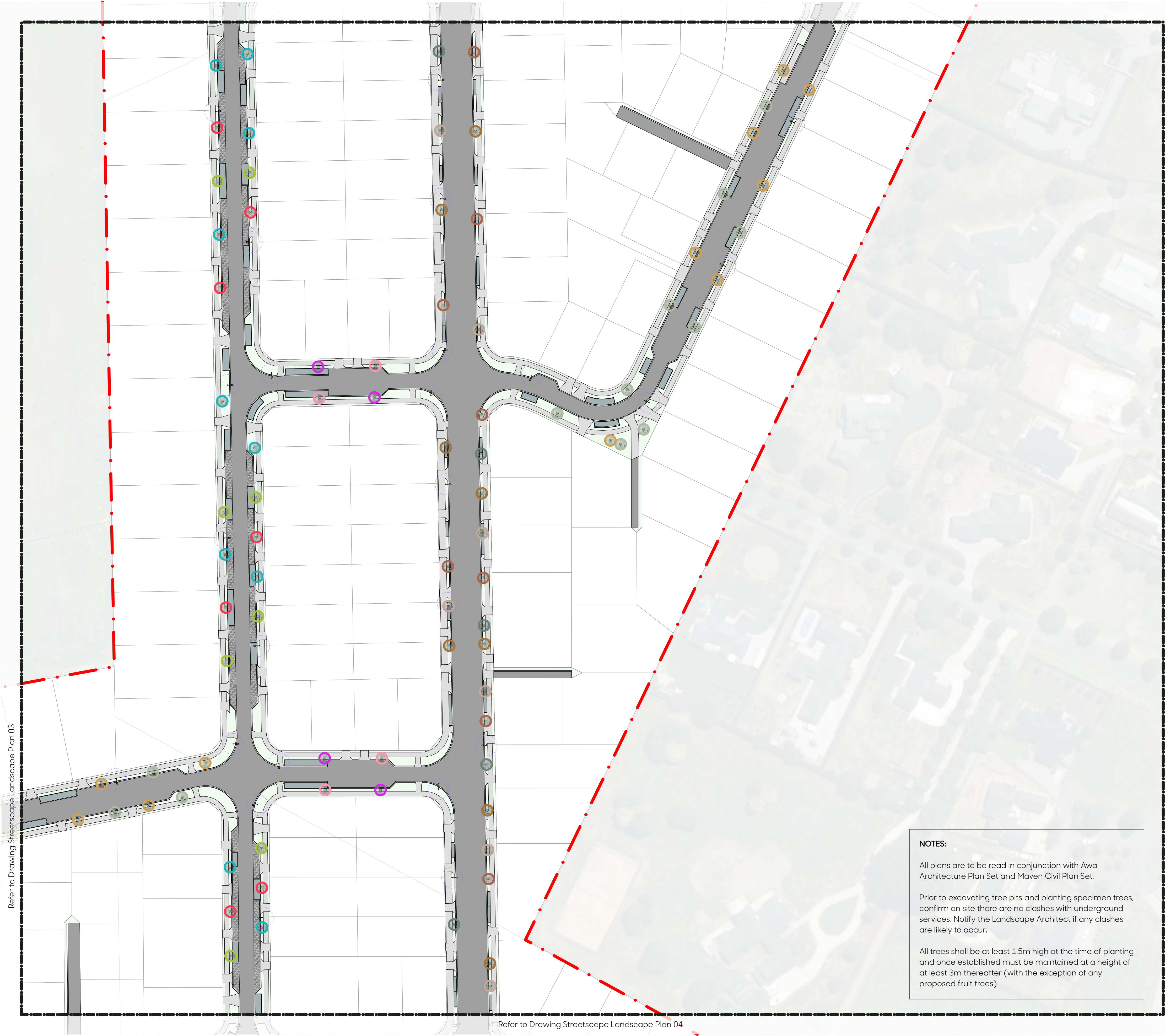
- Boundary Scope of Work
- Specimen Trees w/ Bark Mulch
- Lawn
- Rain Gardens
- Standard Concrete
- Exposed Aggregate Concrete
- Asphalt
- Hoggin Limestone
- Street Light (w/8m radial exclusion zone)



SHEET LOCATION PLAN - NTS

SPECIMEN TREES

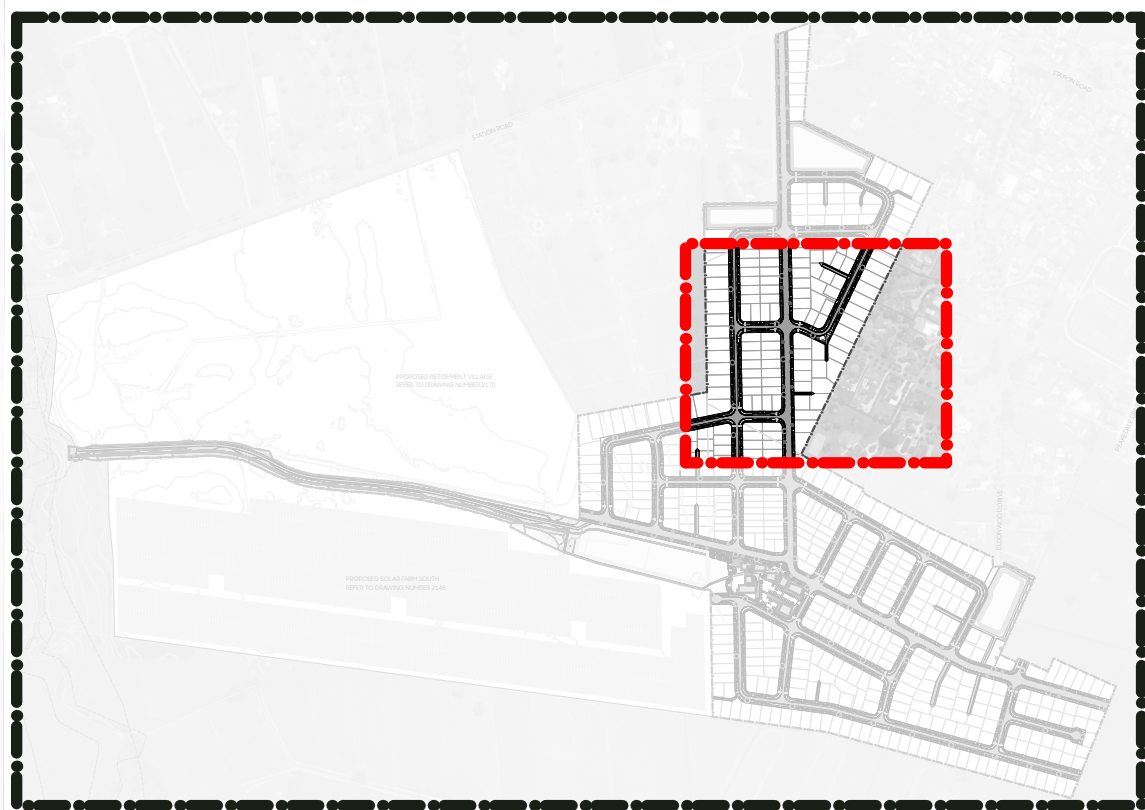




Code	Botanical Name	Common Name	Grade	Spacing
Specimen Trees - Streets				
●	<i>Acer palmatum</i>	Japanese maple	45L	Marked
●	<i>Alectryon excelsus</i>	titoki	45L	Marked
●	<i>Carpinus betulus 'Fastigiata'</i>	upright hornbeam	45L	Marked
●	<i>Hoheria populnea</i>	houhere	45L	Marked
●	<i>Knightia excelsa</i>	rewarewa	45L	Marked
●	<i>Phyllocladus trichomanoides</i>	tānekaha	45L	Marked
●	<i>Plagianthus regius</i>	manatu	45L	Marked
●	<i>Prumnopitys ferruginea</i>	miro	45L	Marked
●	<i>Lagerstroemia indica</i>	crepe myrtle	45L	Marked
●	<i>Quercus rubra</i>	red oak	45L	Marked
●	<i>Saphora microphylla</i>	kōwhai	45L	Marked
●	<i>Vitex lucens</i>	pūriri	45L	Marked
RGM Rain Garden Planting Mix				
	<i>Apodasmia similis</i>	lōi	2L	0.75m
	<i>Blechnum novae-zelandiae</i>	kiokio	2L	0.75m
	<i>Carex secta</i>	pūrei	2L	0.75m
	<i>Coprosma acerosa</i>	sand Coprosma	2L	0.75m
	<i>Corokia cotoneaster</i>	korokio	2L	0.75m
	<i>Dianella nigra</i>	turutu	2L	0.75m
	<i>Muehlenbeckia complexa</i>	pohuehue	2L	0.75m
	<i>Phormium cookianum</i>	wharariki	2L	0.75m
	<i>Pseudopanax crassifolius</i>	horoeke	10L	1m
AP Amenty Planting Mix				
	<i>Coprosma 'Hawera'</i>	groundcover Coprosma	2L	1m
	<i>Dianella nigra</i>	turutu	2L	1m
	<i>Hebe 'Wiri Mist'</i>	shrubby Veronica	2L	1m
	<i>Phormium cookianum</i>	wharariki	2L	1m
Hardscape Surfaces				
	Standard concrete - Pedestrian & Vehicular	Standard concrete, 4kg black oxide per m3, broom finish		
	Exposed aggregate concrete - Vehicular	Standard concrete with Firth 'Mountain Burst' aggregate, exposed aggregate finish		
	Hoggin Limestone	Hoggin Limestone Gap 6		
	Bark mulch	Cambium bark mulch		
	Lawn	PGG Wrightson DuraVeg® Berm Mix		
	Asphalt	Sowing Rate: 30-50g/m2		
		By others		

LEGEND

- Boundary Scope of Work
- Specimen Trees w/ Bark Mulch
- Lawn
- Rain Gardens
- Standard Concrete
- Exposed Aggregate Concrete
- Asphalt
- Hoggin Limestone
- Street Light (w/8m radial exclusion zone)



SHEET LOCATION PLAN - NTS

SPECIMEN TREES

