


Notes

1. All works to be in accordance with Waikato Regional Infrastructure Technical Specifications.
2. Co-ordinates in terms of NZ Geodetic Datum Mount Eden 2000.
3. Levels in terms of the New Zealand Vertical Datum 2016.
4. It is the Contractors responsibility to locate all services that may be affected by his operations.
5. Approved hardfill is to be used in backfilling of all road crossings to council standards.
6. Heavy duty manhole lids and frames to be used in trafficked areas, all manholes shall have stainless grates installed.
7. All lines are to be 150mmØ PVC Class SN16 unless shown otherwise.
8. All lot connections are to be 100mmØ PVC unless shown otherwise.
9. 150mmØ pipes that do not terminate in a manhole must be terminated with a 100mmØ on a 150mmØ london junction and blank cap.
10. Manhole diameters shown on structure label are internal diameter.
11. Measurements shown on the lot connections are the distance from the centre of the downstream manhole to the lot connection position within the lot boundary.
12. Manhole slab and cover to be rotated to avoid the footpath edge for manholes on footpath.
13. Pipe lengths shown on plan are from upstream pipe invert to downstream pipe invert.

Legend

— T — T —	EX BDY
— V — V —	EX TELECOM
— GAS — GAS —	EX POWER
— W — W —	EX GAS
— W — W —	EX WASTEWATER
— W — W —	EX STORMWATER
— W — W —	EX WATER SUPPLY
— W — W —	PROP WW
— W — W —	WW RISING MAIN
— W — W —	EX/PROP WWMH

D	FAST TRACK APP	MKS	06/2025
C	FAST TRACK APP	MKS	05/2025
B	FAST TRACK APP	MKS	04/2025
A	FAST TRACK APP	MKS	04/2025
Rev	Description	By	Date
		By	Date
Survey	MAVEN		05/2024
Design	MKS		04/2025
Drawn	MKS		04/2025
Checked	DJM		06/2025



Maven Associates
09 571 0050
info@maven.co.nz
www.maven.co.nz
5 Owens Road, Epsom
Auckland 1023

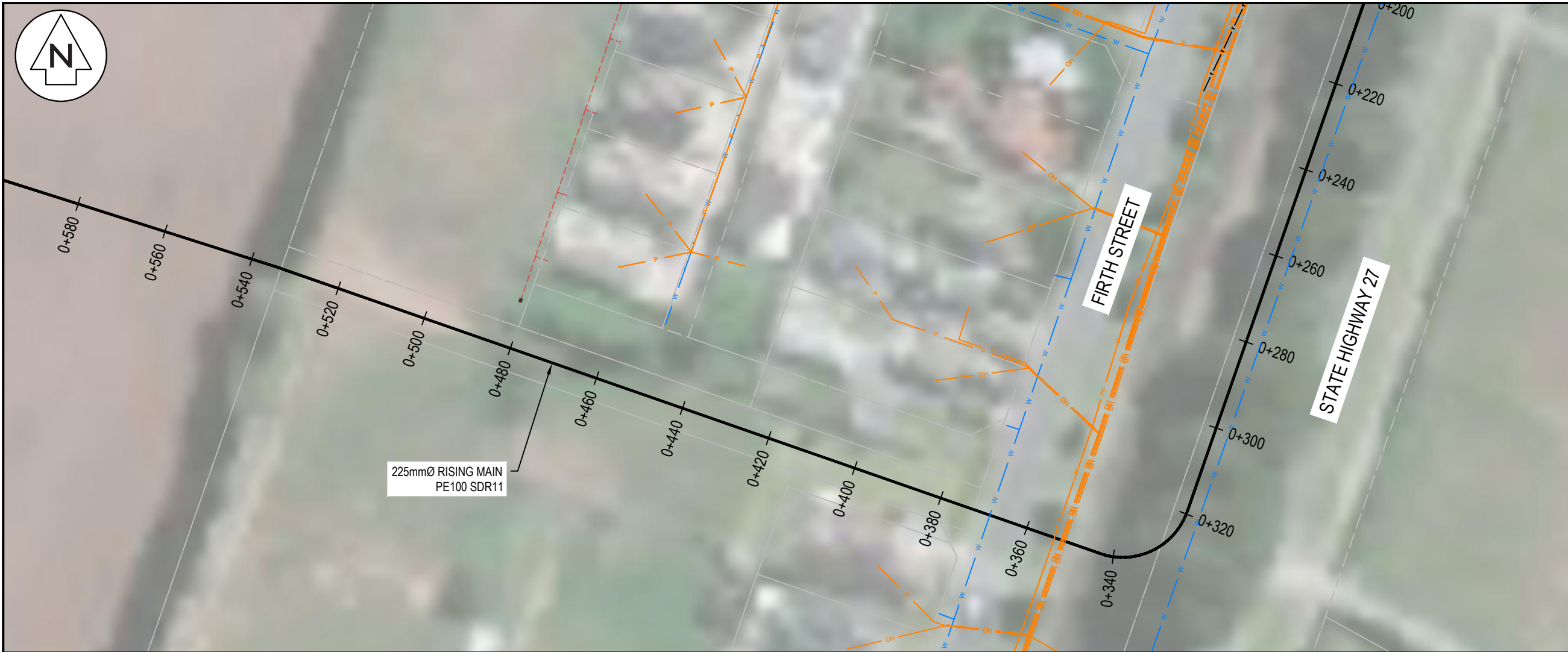
Project

**ASHBOURNE
RESIDENTIAL
FOR
MATAMATA
DEVELOPMENTS LTD**

Title

**PROPOSED
WWPS RISING MAIN
OVERVIEW PLAN**

Project no.	289001		
Scale	1:4000 @ A3		
Cad file	C540-WWPS LS.DWG		
Drawing no.	C540	Rev	D



- Notes
1. All works to be in accordance with Waikato Regional Infrastructure Technical Specifications.
 2. Co-ordinates in terms of NZ Geodetic Datum Mount Eden 2000.
 3. Levels in terms of the New Zealand Vertical Datum 2016.
 4. It is the Contractors responsibility to locate all services that may be affected by his operations.
 5. Approved hardfill is to be used in backfilling of all road crossings to council standards.
 6. Heavy duty manhole lids and frames to be used in trafficked areas, all manholes shall have stainless grates installed.
 7. All lines are to be 150mmØ PVC Class SN16 unless shown otherwise.
 8. All lot connections are to be 100mmØ PVC unless shown otherwise.
 9. 150mmØ pipes that do not terminate in a manhole must be terminated with a 100mmØ on a 150mmØ london junction and blank cap.
 10. Manhole diameters shown on structure label are internal diameter.
 11. Measurements shown on the lot connections are the distance from the centre of the downstream manhole to the lot connection position within the lot boundary.
 12. Manhole slab and cover to be rotated to avoid the footpath edge for manholes on footpath.
 13. Pipe lengths shown on plan are from upstream pipe invert to downstream pipe invert.

Legend		
---	EX BDY	
---	EX TELECOM	
---	EX POWER	
---	EX GAS	
---	EX WASTEWATER	
---	EX STORMWATER	
---	EX WATER SUPPLY	
---	PROP WW	
---	WW RISING MAIN	
---	EX/PROP WWMH	

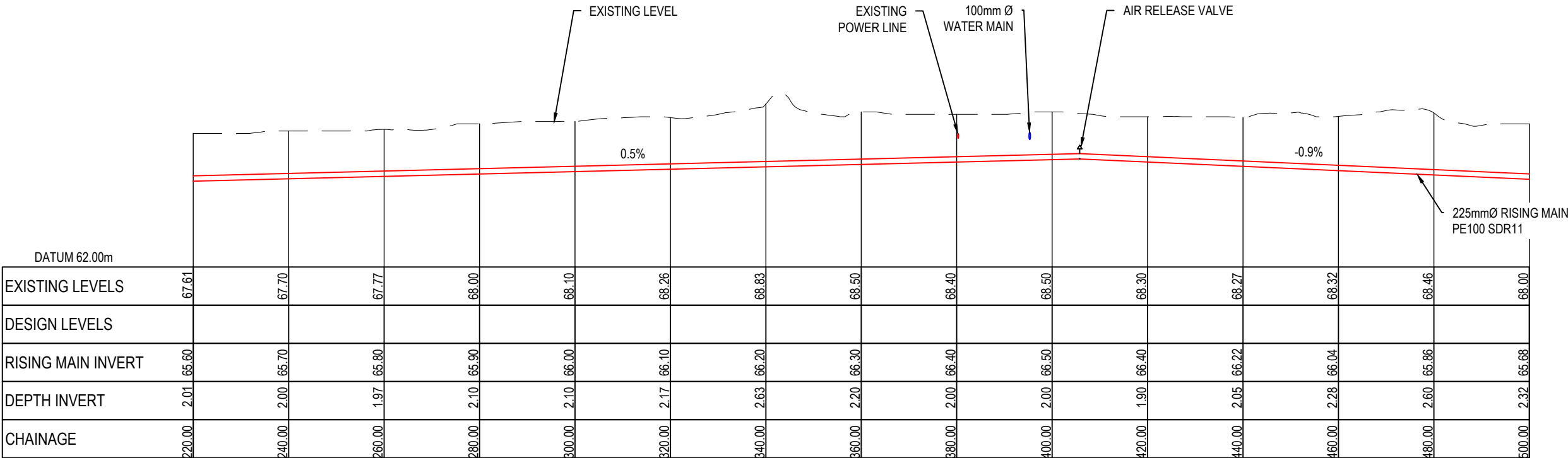
D	FAST TRACK APP	MKS	06/2025
C	FAST TRACK APP	MKS	05/2025
B	FAST TRACK APP	MKS	04/2025
A	FAST TRACK APP	MKS	04/2025
Rev	Description	By	Date
		By	Date
Survey	MAVEN		05/2024
Design	MKS		04/2025
Drawn	MKS		04/2025
Checked	DJM		06/2025



Project
**ASHBOURNE
RESIDENTIAL
FOR
MATAMATA
DEVELOPMENTS LTD**

Title
**PROPOSED
WWPS RISING MAIN
LONGSECTION**

Project no.	289001		
Scale	1:1000 @ A3		
Cad file	C540-WWPS LS.DWG		
Drawing no.	C540-2	Rev	D



LONGSECTION - CATCHMENT B (RISING MAIN 1 CONT.)
SCALE 1:1000 HORI & 1:200 VERTICAL @ A3

RESOURCE CONSENT



- Notes
1. All works to be in accordance with Waikato Regional Infrastructure Technical Specifications.
 2. Co-ordinates in terms of NZ Geodetic Datum Mount Eden 2000.
 3. Levels in terms of the New Zealand Vertical Datum 2016.
 4. It is the Contractors responsibility to locate all services that may be affected by his operations.
 5. Approved hardfill is to be used in backfilling of all road crossings to council standards.
 6. Heavy duty manhole lids and frames to be used in trafficked areas, all manholes shall have stainless grates installed.
 7. All lines are to be 150mmØ PVC Class SN16 unless shown otherwise.
 8. All lot connections are to be 100mmØ PVC unless shown otherwise.
 9. 150mmØ pipes that do not terminate in a manhole must be terminated with a 100mmØ on a 150mmØ london junction and blank cap.
 10. Manhole diameters shown on structure label are internal diameter.
 11. Measurements shown on the lot connections are the distance from the centre of the downstream manhole to the lot connection position within the lot boundary.
 12. Manhole slab and cover to be rotated to avoid the footpath edge for manholes on footpath.
 13. Pipe lengths shown on plan are from upstream pipe invert to downstream pipe invert.

Legend

— T — T —	EX BDY
— V — V —	EX TELECOM
— GAS — GAS —	EX POWER
— W — W —	EX GAS
— W — W —	EX WASTEWATER
— W — W —	EX STORMWATER
— W — W —	EX WATER SUPPLY
— W — W —	PROP WW
— W — W —	WW RISING MAIN
— W — W —	EX/PROP WWMH

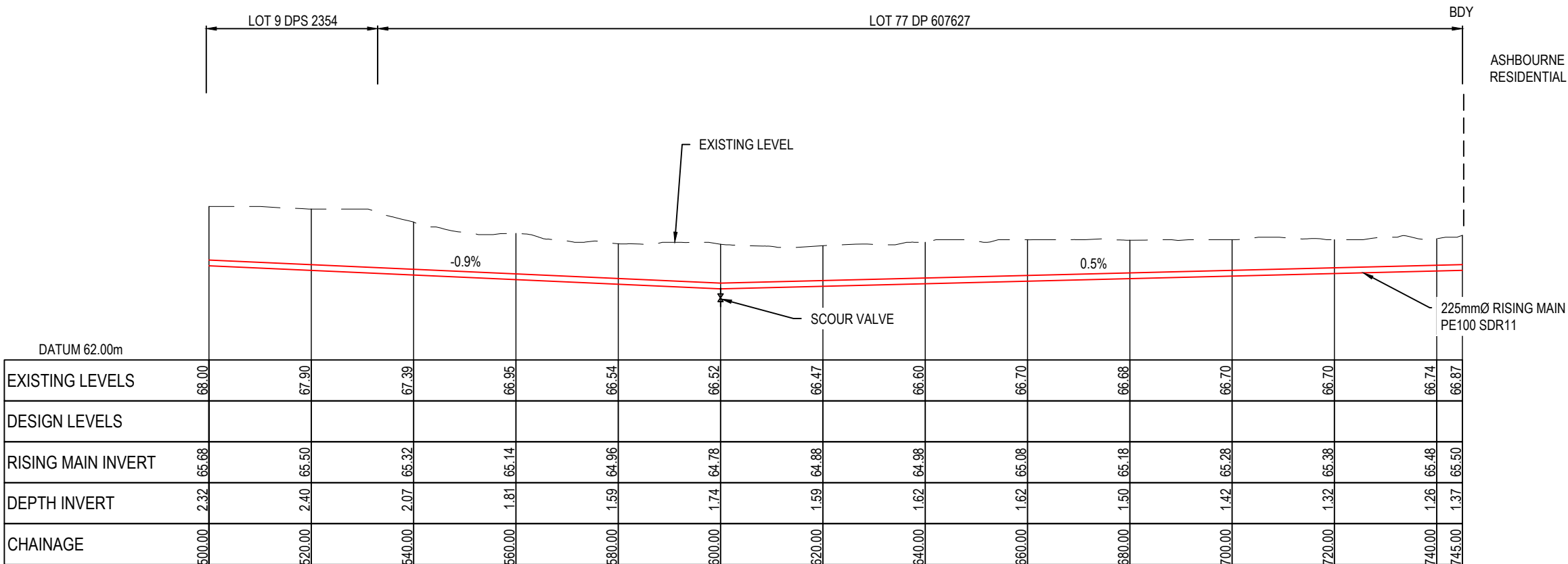
D	FAST TRACK APP	MKS	06/2025
C	FAST TRACK APP	MKS	05/2025
B	FAST TRACK APP	MKS	04/2025
A	FAST TRACK APP	MKS	04/2025
Rev	Description	By	Date
		By	Date
Survey	MAVEN		05/2024
Design	MKS		04/2025
Drawn	MKS		04/2025
Checked	DJM		06/2025

M **Maven Associates**
09 571 0050
info@maven.co.nz
www.maven.co.nz
5 Owens Road, Epsom
Auckland 1023

Project
**ASHBOURNE
RESIDENTIAL
FOR
MATAMATA
DEVELOPMENTS LTD**

Title
**PROPOSED
WWPS RISING MAIN
LONGSECTION**

Project no.	289001		
Scale	1:1000 @ A3		
Cad file	C540-WWPS LS.DWG		
Drawing no.	C540-3	Rev	D



LONGSECTION - CATCHMENT B (RISING MAIN 1 CONT.)
SCALE 1:1000 HORI & 1:200 VERTICAL @ A3

RESOURCE CONSENT

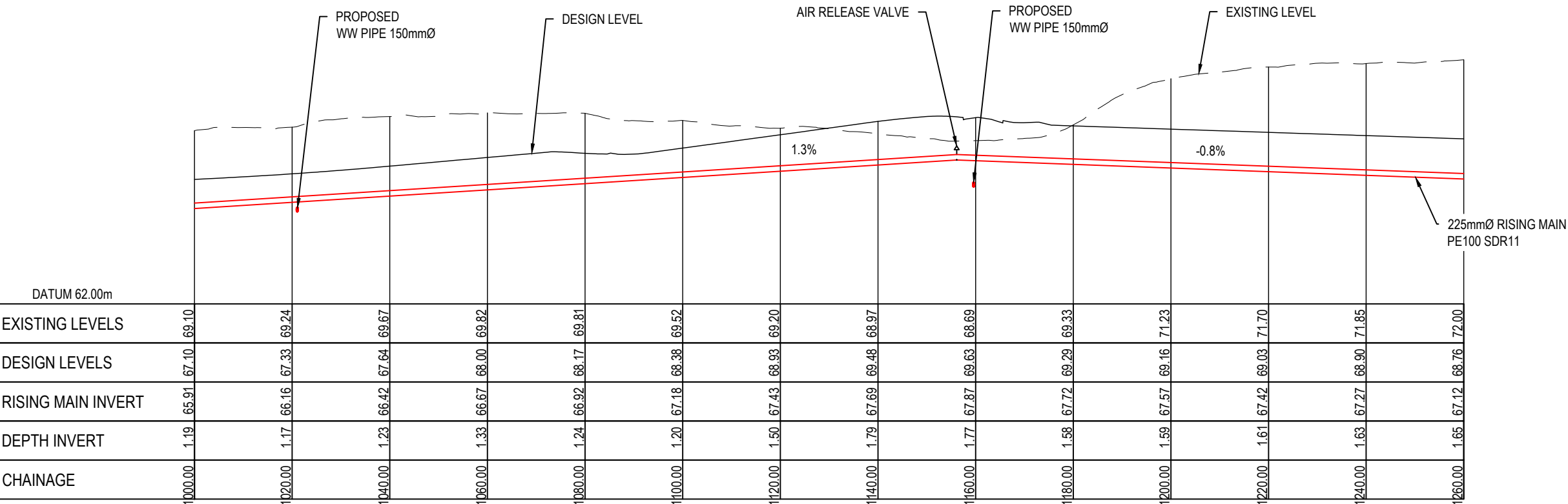


Notes

1. All works to be in accordance with Waikato Regional Infrastructure Technical Specifications.
2. Co-ordinates in terms of NZ Geodetic Datum Mount Eden 2000.
3. Levels in terms of the New Zealand Vertical Datum 2016.
4. It is the Contractors responsibility to locate all services that may be affected by his operations.
5. Approved hardfill is to be used in backfilling of all road crossings to council standards.
6. Heavy duty manhole lids and frames to be used in trafficked areas, all manholes shall have stainless grates installed.
7. All lines are to be 150mmØ PVC Class SN16 unless shown otherwise.
8. All lot connections are to be 100mmØ PVC unless shown otherwise.
9. 150mmØ pipes that do not terminate in a manhole must be terminated with a 100mmØ on a 150mmØ london junction and blank cap.
10. Manhole diameters shown on structure label are internal diameter.
11. Measurements shown on the lot connections are the distance from the centre of the downstream manhole to the lot connection position within the lot boundary.
12. Manhole slab and cover to be rotated to avoid the footpath edge for manholes on footpath.
13. Pipe lengths shown on plan are from upstream pipe invert to downstream pipe invert.

Legend

— T — T —	EX BDY
— V — V —	EX TELECOM
— GAS — GAS —	EX POWER
— W — W —	EX GAS
— W — W —	EX WASTEWATER
— W — W —	EX STORMWATER
— W — W —	EX WATER SUPPLY
— W — W —	PROP WW
— W — W —	WW RISING MAIN
— W — W —	EX/PROP WWMH



LONGSECTION - CATCHMENT B (RISING MAIN 1 CONT.)
SCALE 1:1000 HORI & 1:200 VERTICAL @ A3

RESOURCE CONSENT

D	FAST TRACK APP	MKS	06/2025
C	FAST TRACK APP	MKS	05/2025
B	FAST TRACK APP	MKS	04/2025
A	FAST TRACK APP	MKS	04/2025
Rev	Description	By	Date
		By	Date
Survey	MAVEN		05/2024
Design	MKS		04/2025
Drawn	MKS		04/2025
Checked	DJM		06/2025

Maven Associates
09 571 0050
info@maven.co.nz
www.maven.co.nz
5 Owens Road, Epsom
Auckland 1023

Project

**ASHBOURNE
RESIDENTIAL
FOR
MATAMATA
DEVELOPMENTS LTD**

Title

**PROPOSED
WWPS RISING MAIN
LONGSECTION**

Project no.	289001		
Scale	1:1000 @ A3		
Cad file	C540-WWPS LS.DWG		
Drawing no.	C540-5	Rev	D

