



Auckland Surf Park Community Masterplan

Substantive Fast Track Application Pack

LIGHT INDUSTRIAL (EAST) PRECINCT



CHANGE TO SITE LAYOUT
AND ARCHITECTURE
PROVED UNDER STAGE 1
BUN60429155

DATA CENTRE

DATA CENTRE

LIGHT INDUSTRIAL

LIGHT INDUSTRIAL

LIGHT INDUSTRIAL

LIGHT INDUSTRIAL

LIGHT INDUSTRIAL

LIGHT INDUSTRIAL

LIGHT INDUSTRIAL

LIGHT INDUSTRIAL

LIGHT INDUSTRIAL

LIGHT INDUSTRIAL

10M SETBACK

SUBSTATION
REFER TO VECTOR
ELECTRICITY
DRAWINGS

Postman RD



True North:



Original Scale / Print check:

Print in Colour

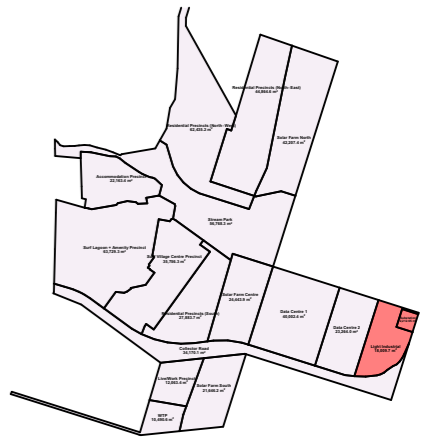
Notes:

DO NOT SCALE OFF DRAWINGS

All dimensions to be checked on site.

Copyright in all drawings, specifications and other documents and in the work executed from them remains the property of Studio of Pacific Architecture Ltd. © Studio of Pacific Architecture Limited 2025

Rev	Description	Date



LEGEND:

- Superlot boundary
- Footpath
- Footpath (Flush)
- Cycleway
- Lawn
- Planting
- Concrete surface
- Hogglin surface
- Sand play safety surface
- 10m stream offset riparian planting
- Timber boardwalk
- Site boundary
- NOR boundary (indicative)
- Stream centre line
- 10m stream offset line
- Stormwater ponds/ raingardens
- Stream Park timber buildouts
- Raised vege planters
- Buildings
- Lounge bench seats
- Rocks
- Timber nature trail/ play-along-the-way
- Picnic tables
- BBQ's
- Picnic shelter
- Bench seats
- Trees

Note: Where the masterplan extends beyond the scope of SPA's work, it is shown **indicatively**. For the relevant legend and detailed information, please refer to the respective consultants' drawings.

studiopacificarchitecture

Architects
Urban Designers
Interior Designers
Landscape Architects

74 Cuba Street P.O. Box 11-517, Te Aro Wellington New Zealand 6011
P: (04) 802 5444 E: architects@studiopacific.co.nz W: www.studiopacific.co.nz

Prepared For:

AW Holdings Ltd

Project Title:

Auckland Surf Park Community

at

Dairy Flat Highway, Auckland #

Layout Name:

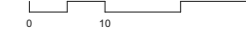
LIGHT INDUSTRIAL (EAST) PRECINCT
Light Industrial (East)

Scale: 1:1500 Original Paper Size: A3

Job No.: 4663 Layout I.D.: RC_7.2 Revision:



True North:



Original Scale / Print check:

Print in Colour

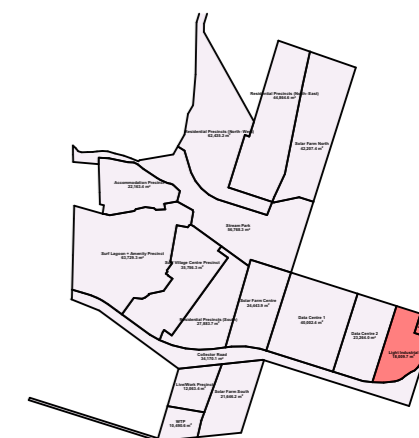
Notes:

DO NOT SCALE OFF DRAWINGS

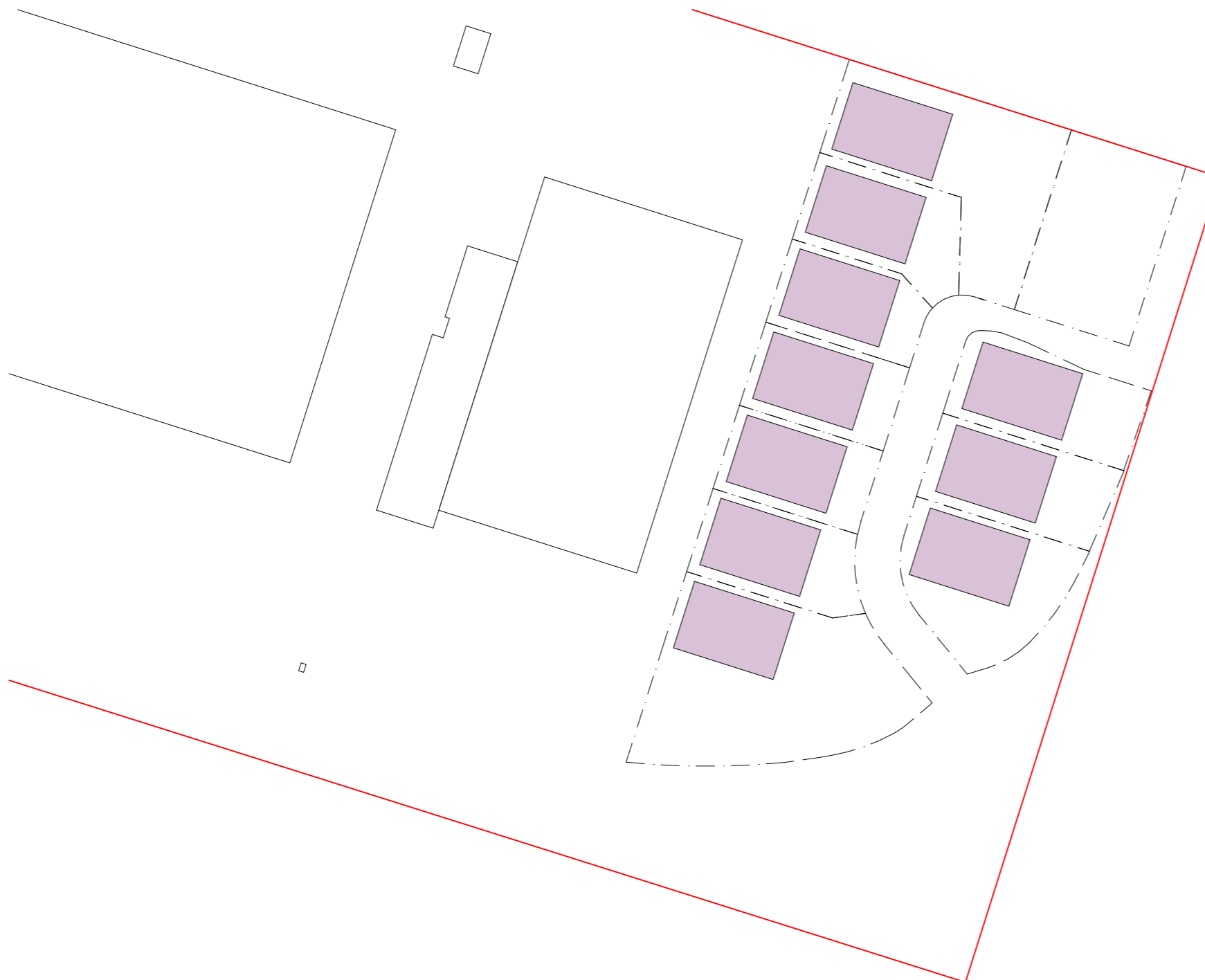
All dimensions to be checked on site.

Copyright in all drawings, specifications and other documents and in the work executed from them remains the property of Studio of Pacific Architecture Ltd. © Studio of Pacific Architecture Limited 2025

Rev	Description	Date



TOTAL



studiopacificarchitecture

Architects
Urban Designers
Interior Designers
Landscape Architects

74 Cuba Street P: (04) 802 5444
P.O. Box 11-517, Te Aro E: architects@studiopacific.co.nz
Wellington W: www.studiopacific.co.nz
New Zealand 6011

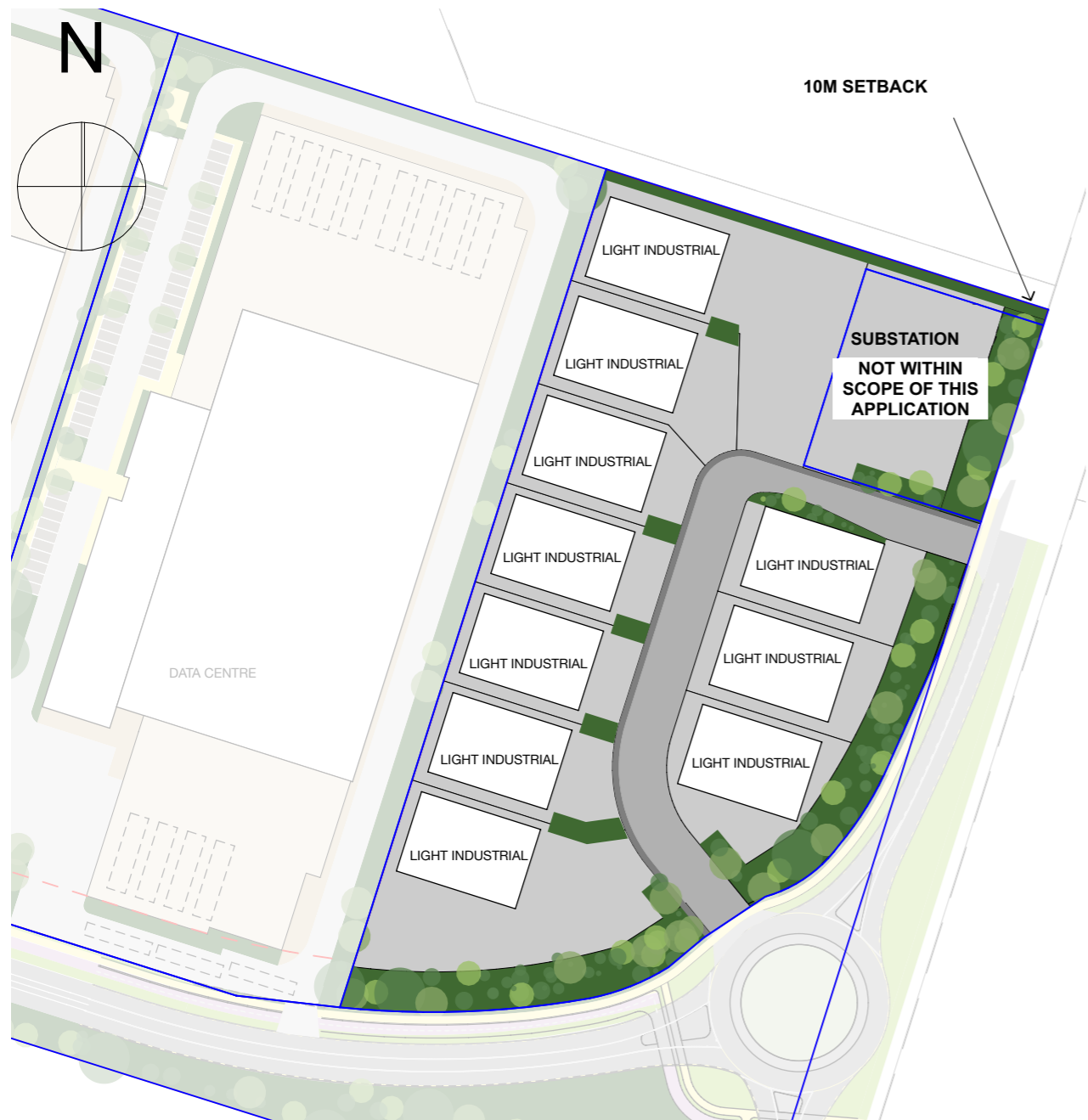
Prepared For:
AW Holdings Ltd

Project Title:
**Auckland Surf Park
Community**

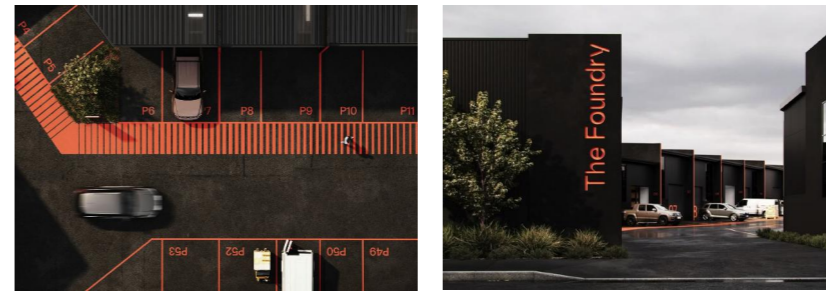
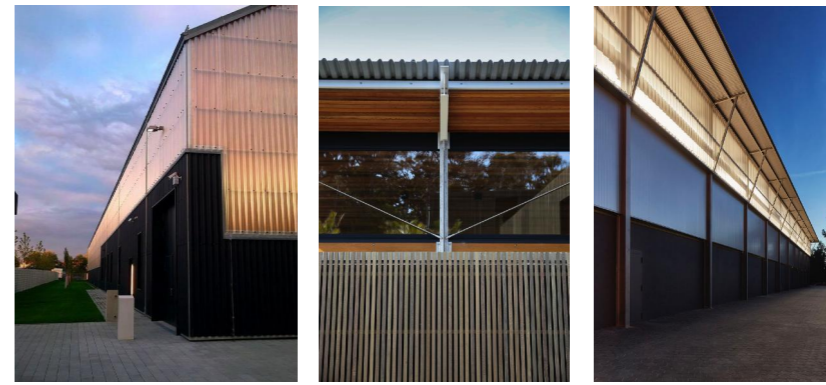
at
Dairy Flat Highway, Auckland
#

Layout Name:
**LIGHT INDUSTRIAL (EAST)
PRECINCT
Light Industrial Metric (East)**
Scale: 1:1500 Original Paper Size: A3

Job No.: **4663** Layout I.D.: **RC_7.3** Revision:



Site Plan - Light Industrial Buildings
scale 1:1500



Architectural precedents indicative of material palette and form



Generic perspective

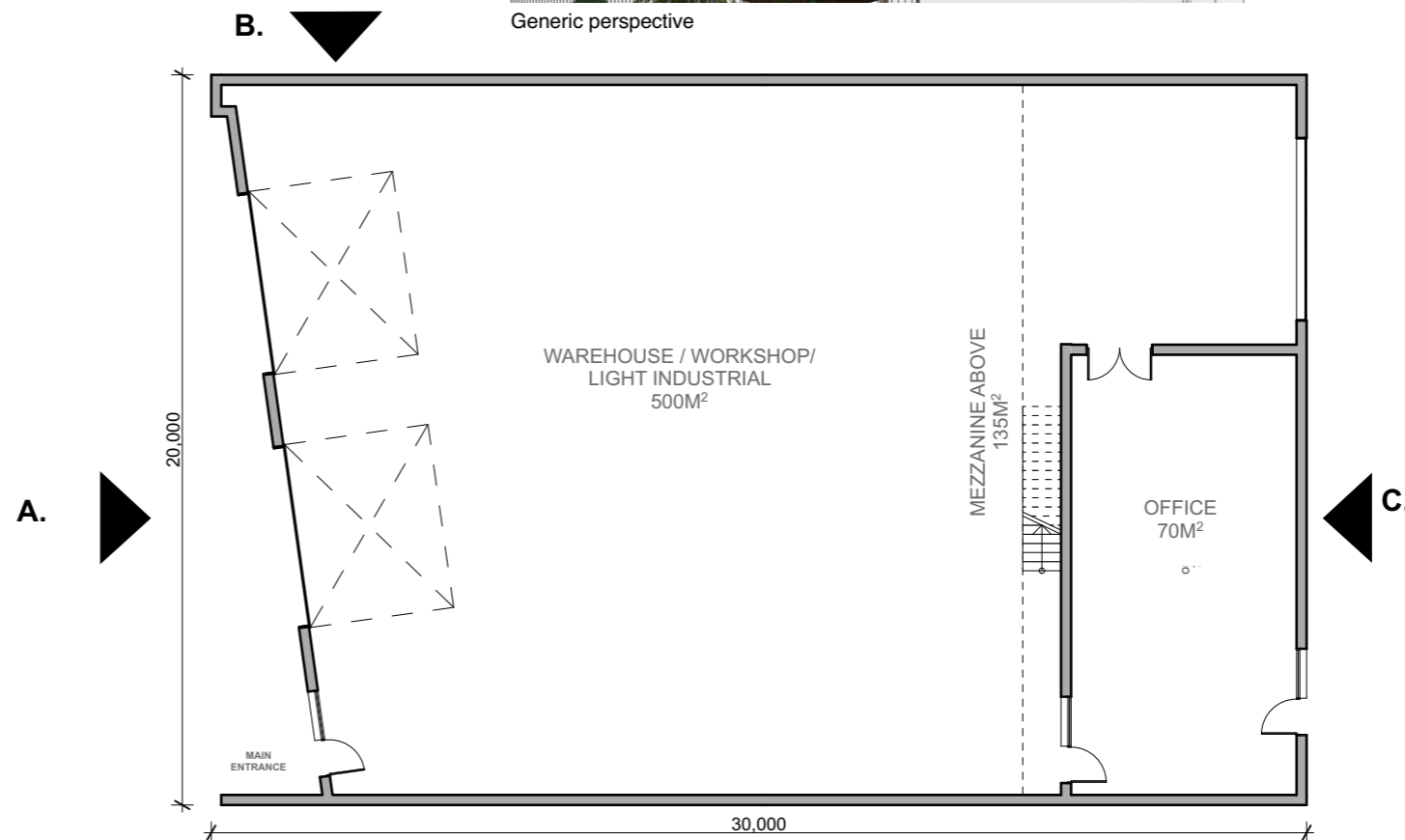
WL_4 Light Industrial Complex

WORKSHOP / FACTORY

ACTIVITY	GFA
LIGHT INDUSTRIAL (workshop/factory)	500m ²
OFFICE (incl mezzanine)	205m ²

Typical unit 705m²

Total GFA 7050m²
(10 units)



Typical Unit Plan WL_4
scale 1:200

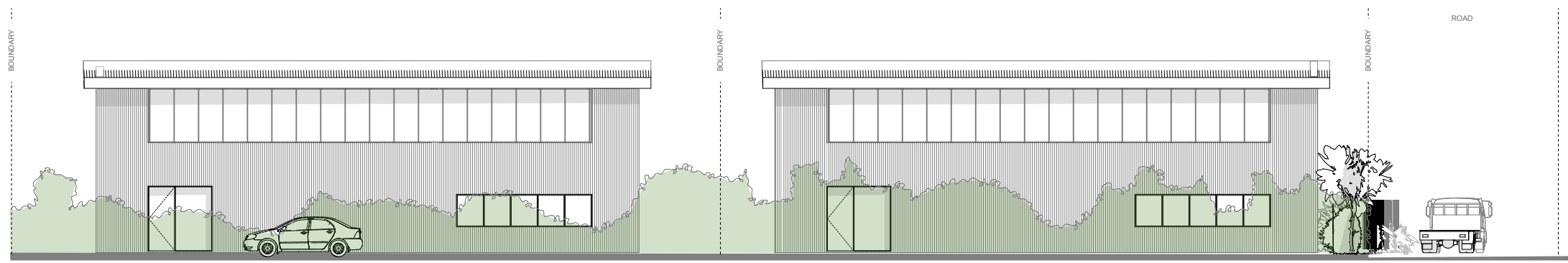
WL_4 Light Industrial Complex



A - Typical Front Elevation
scale 1:200



B - Typical Side Elevation - road frontage
scale 1:200



C - Typical Rear Elevation
scale 1:200

Note:
Height of building shown is below the FUZ Max Non-Dwelling Height (15m measured from existing ground level)