

# RMM

Ridgeburn  
Landscape Strategy Document  
Fast-track Approvals Act  
Referral Application Ridgeburn

20 May 2025

ROUGH MILNE MITCHELL  
LANDSCAPE ARCHITECTS

[rmmla.co.nz](http://rmmla.co.nz)

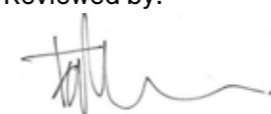
Image produced by OTOH

# Contents

Context and Analysis	04-12
Photographs	13-19
Design Approach	20-28
Planting Strategy	29-35
Landscape and Materiality Inspiration	36-41

This drawing set is conceptual and is for Fast-track Approvals Act Referral Application purposes only. Changes and refinements will likely occur through the future consenting and detail design process. The design intent will remain while it is acknowledged future consent and engineering approval will be required by Queenstown Lakes District Council.

Prepared by:  
**Sophie Harrison and Ursula Bowman**  
RMM Landscape Architects

Reviewed by:  
  
.....  
**Tony Milne**  
Director – NZILA Fellow

Date: 20 May 2025  
Project Number: 25041  
Status: Fast-track Approvals Act Referral Application

**Disclaimer**  
These plans and drawings have been produced as a result of information provided by the client and/or sourced by or provided to Rough Milne Mitchell Landscape Architects Limited (RMM) by a third party for the purposes of providing the services. No responsibility is taken by RMM for any liability or action arising from any incomplete or inaccurate information provided to RMM (whether from the client or a third party). These plans and drawings are provided to the client for the benefit and use by the client and for the purpose for which it is intended.

# Introduction

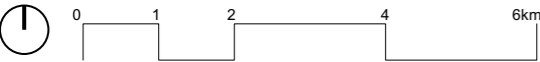
RMM has been engaged by Ridgeburn to develop a Landscape Strategy and Masterplan for the Ridgeburn Fast-track Approvals Act Referrals Application.

The site is 212.5 ha in area, located immediately south east of Morven Hill and south west of Arrow Junction. The proposal will provide approximately 1242 lots and a commercial development area.

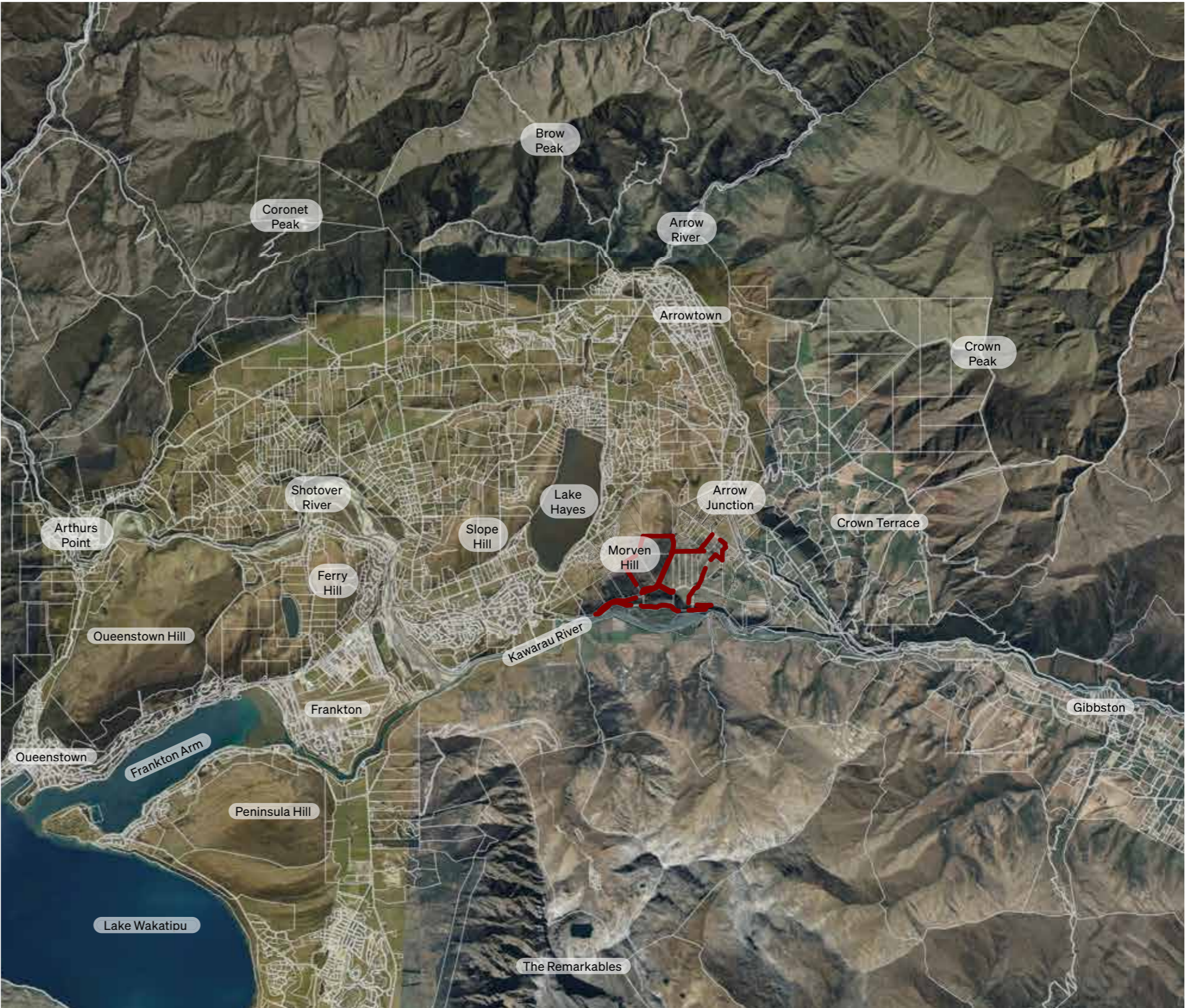
RMM, along with several other consultants, have been involved throughout the design and assessment process which has informed the application proposal.

Legend

--- Site Boundary



Scale 1:100,000@A3

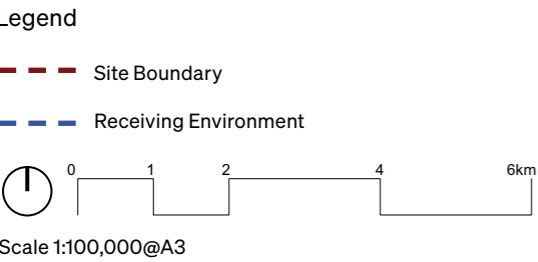




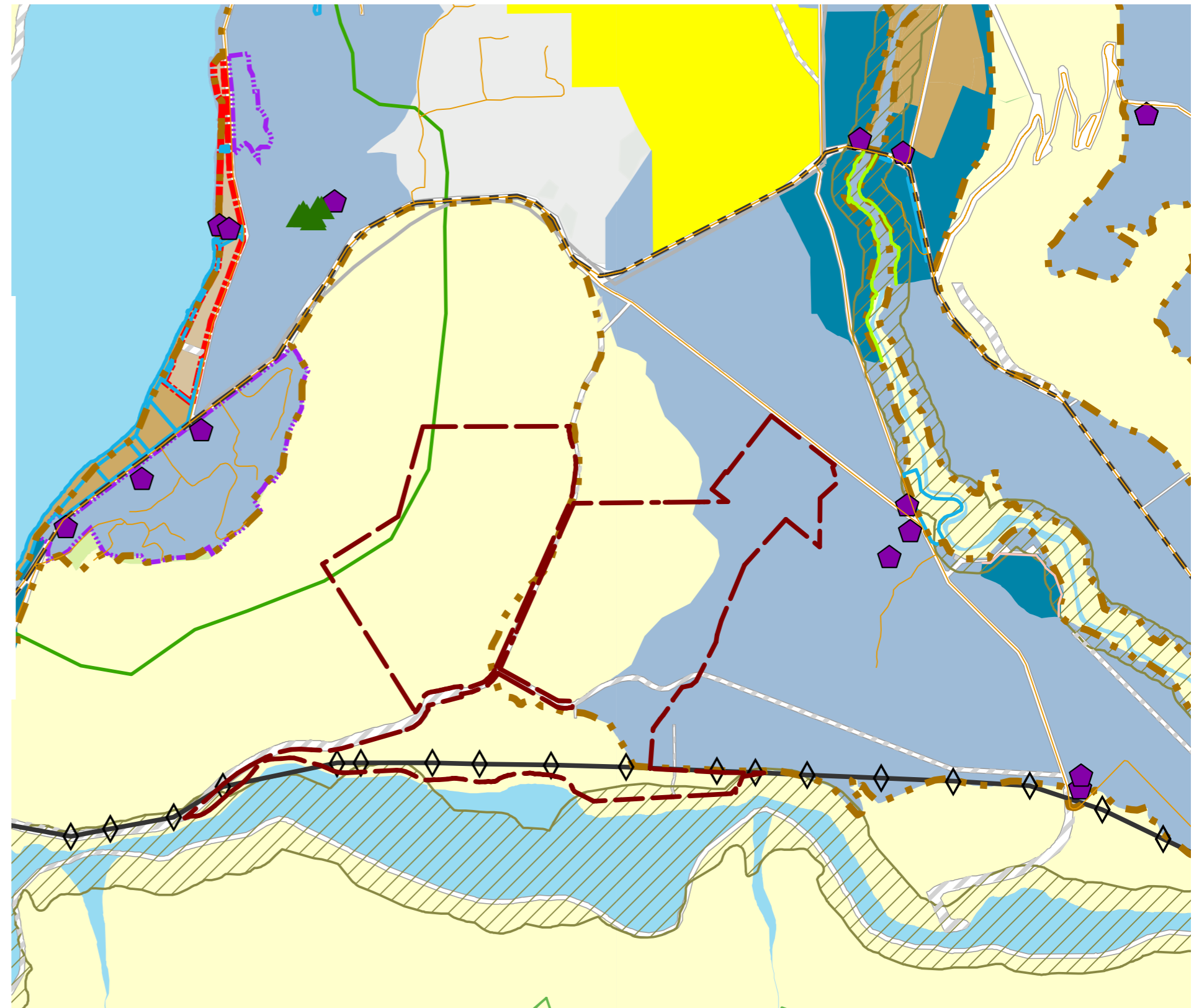
# CONTEXT AND ANALYSIS

# Receiving Environment

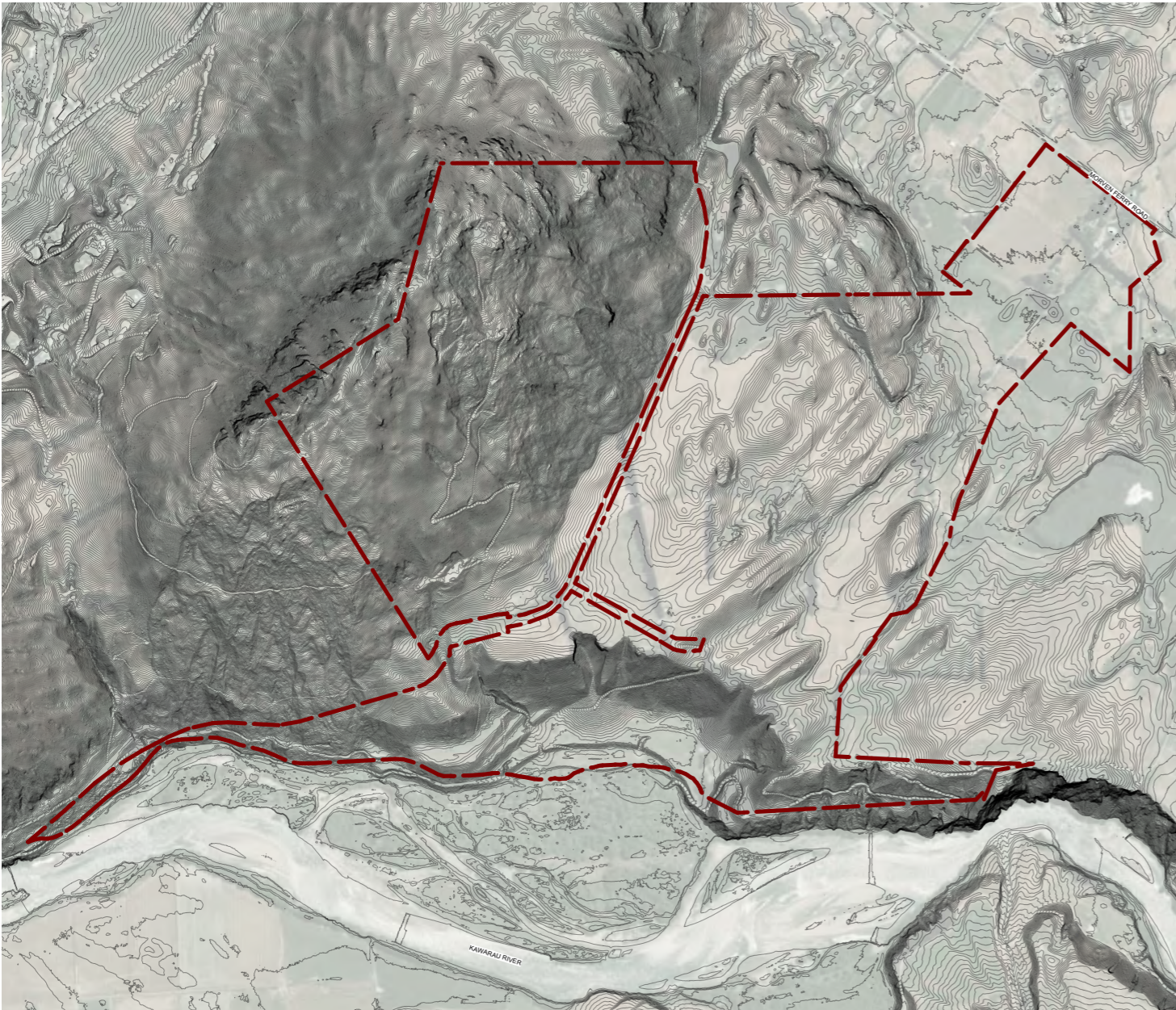
The 212.5ha Ridgeburn site is situated south east of Morven Hill and south west of Arrow Junction. The site also sits, north of the Kawarau River.



## Existing QLDC PDP Zone Plan



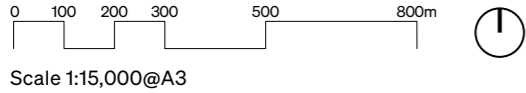
# Site Contour Plan



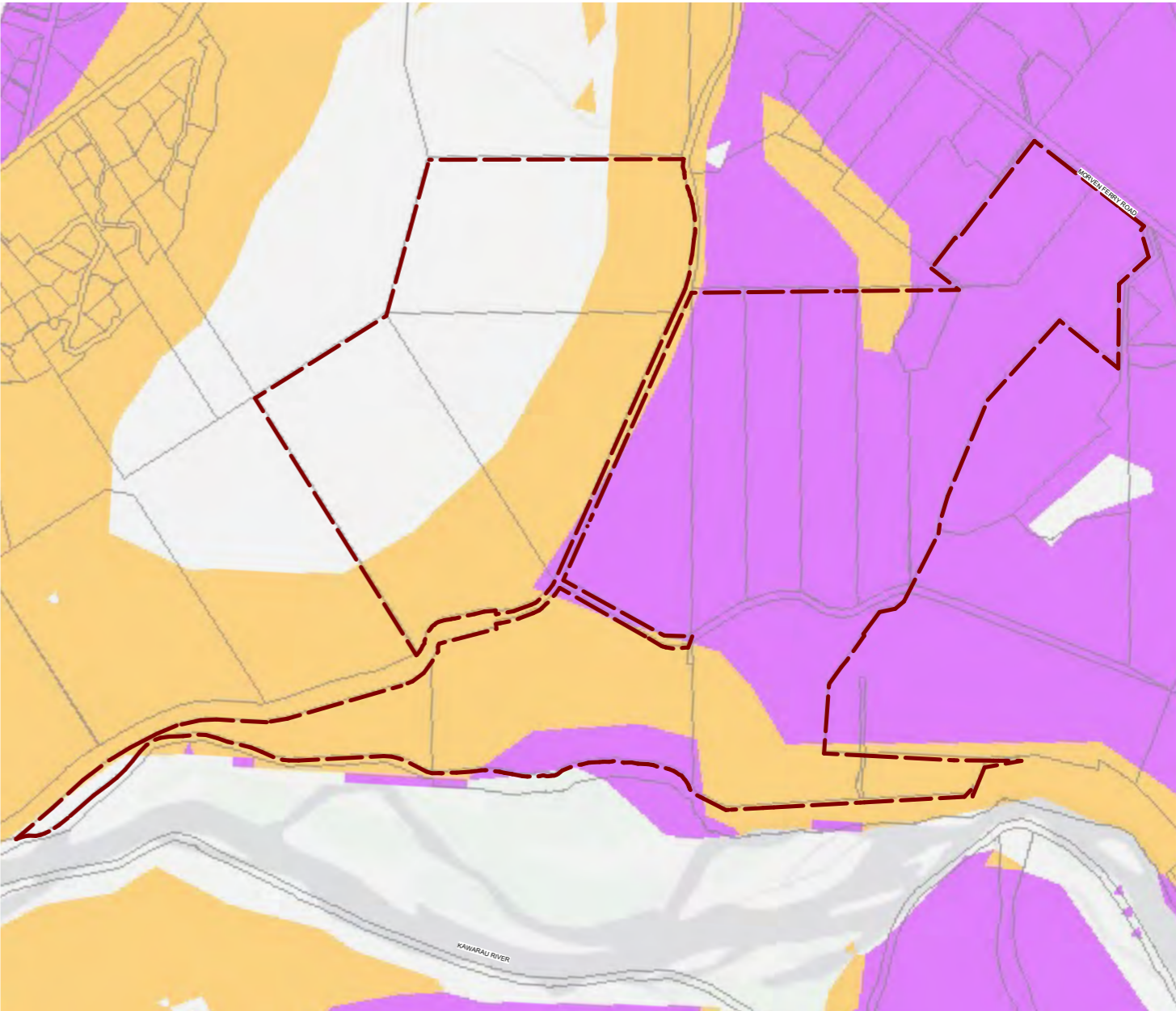
Legend

Site Boundary

Contours at 1m intervals



# Threatened Environments Plan

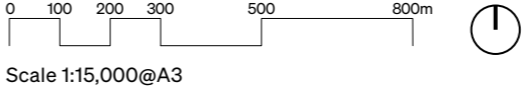


Legend

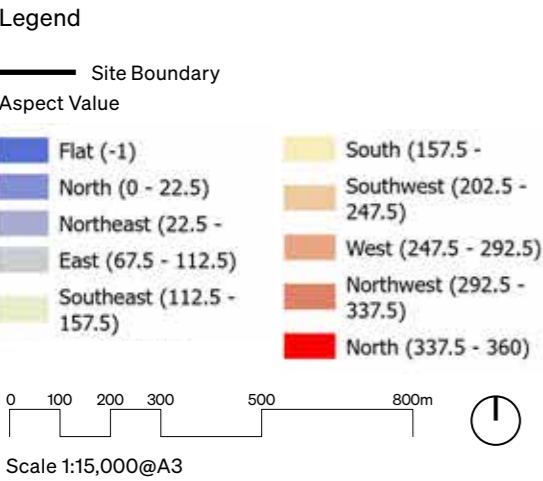
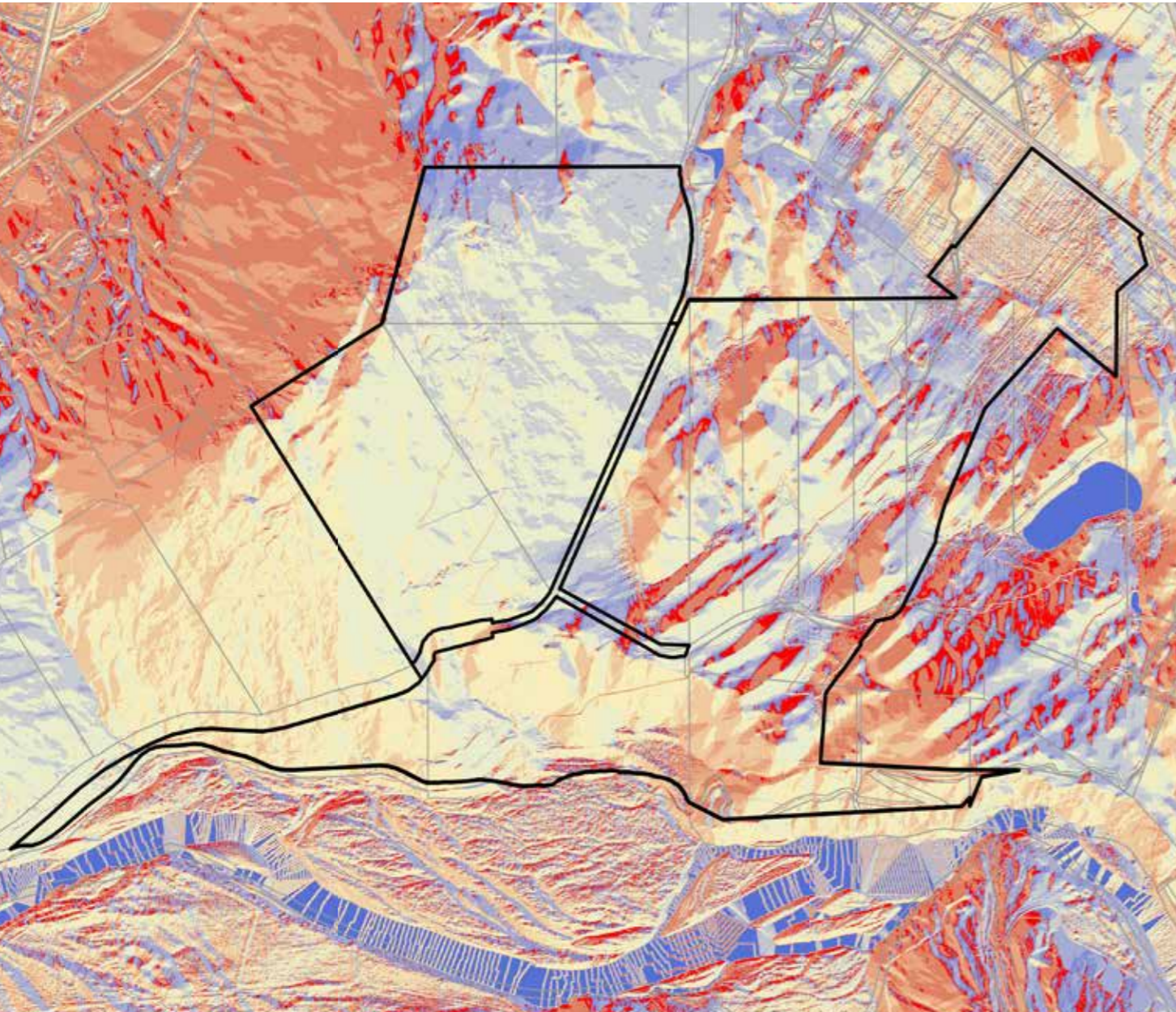
Site Boundary

Threatened Environments  
Classification 2012  
Criteria: <10% indigenous cover left

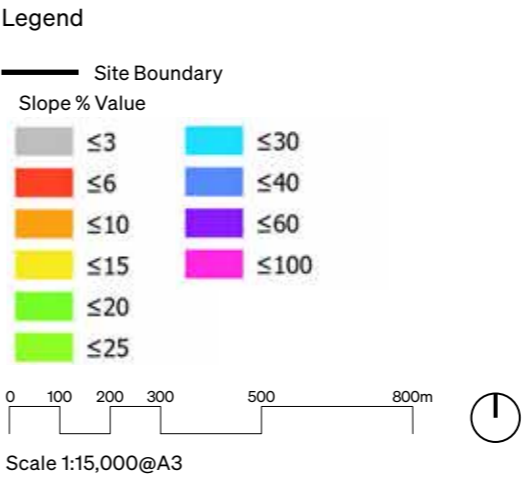
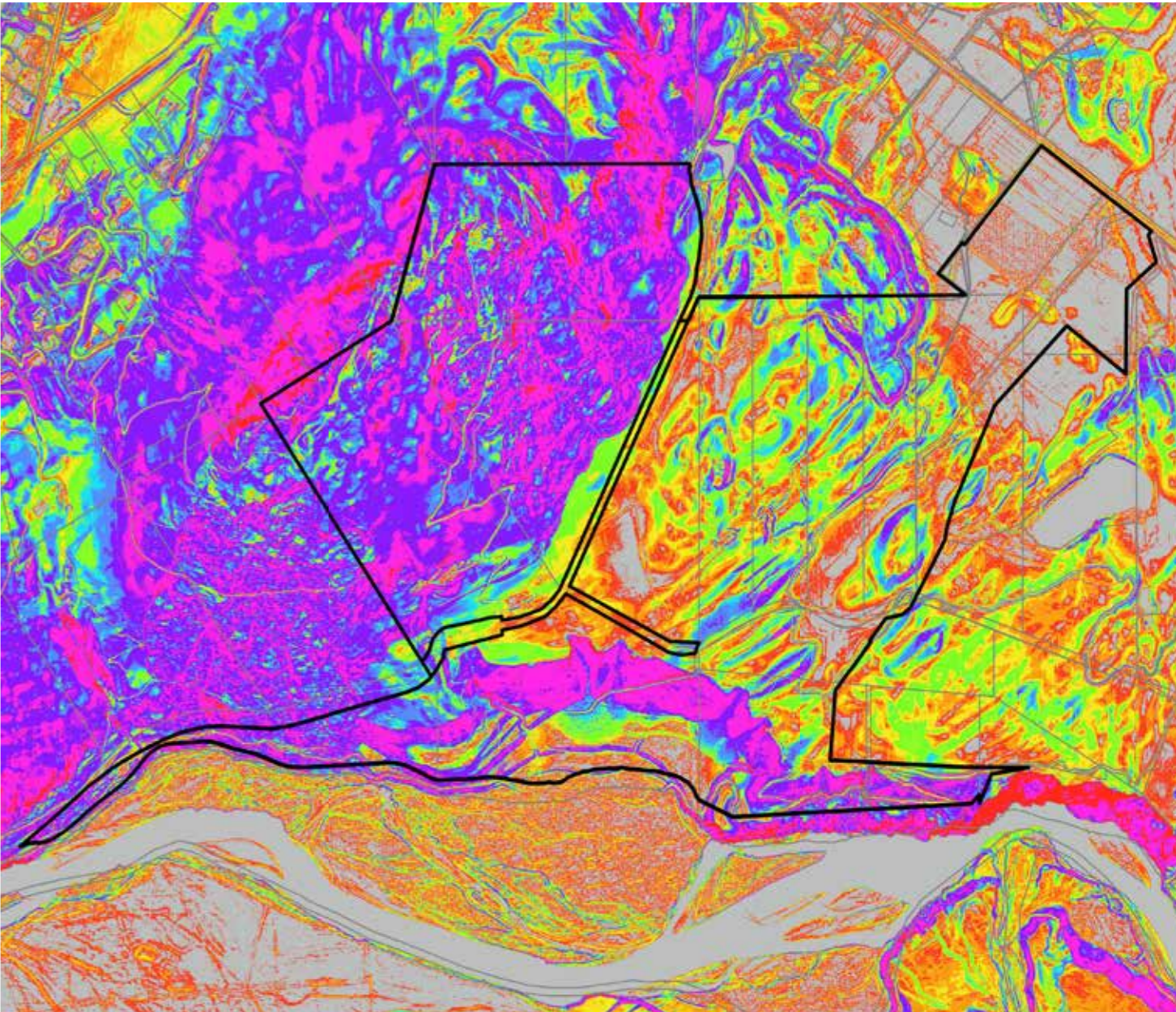
Threatened Environments  
Classification 2012  
Criteria: 10-20% left



# Aspect Plan



# Slope Plan



# Shading Analysis Autumn



Site Shading on 20th March at 9am. (Autumn)



Site Shading on 20th March at 12pm. (Autumn)



Site Shading on 20th March at 3pm. (Autumn)



Site Shading on 20th March at 6pm. (Autumn)

# Shading Analysis Winter



Site Shading on 21st June at 9am. (Winter)



Site Shading on 21st June at 12pm. (Winter)



Site Shading on 21st June at 3pm. (Winter)



Site Shading on 21st June at 6pm. (Winter)

# Shading Analysis Spring



Site Shading on 23rd September at 9am. (Spring)



Site Shading on 23rd September at 12pm. (Spring)



Site Shading on 23rd September at 3pm. (Spring)



Site Shading on 23rd September at 6pm. (Spring)

# Shading Analysis Summer



Site Shading on 22rd December at 9am. (Summer)



Site Shading on 22rd December at 12pm. (Summer)



Site Shading on 22rd December at 3pm. (Summer)



Site Shading on 22rd December at 6pm. (Summer)

The background of the image is a solid black field. Overlaid on this are numerous dark grey, wavy, and somewhat irregular lines. These lines vary in thickness and direction, creating a complex, layered, and organic pattern that resembles a dense network of veins or perhaps a microscopic view of a material. The lines are most prominent in the upper and lower portions of the frame, with the central area being slightly less cluttered, providing a space for the text.

PHOTOGRAPHS

# Viewpoint Locations Plan



Legend

--- Site Boundary

Viewpoint location

Scale 1:20,000@A3

# Viewpoint Photographs



Viewpoint 1: View from stopping point along the Crown Range Road located some 2km below the Crown Range Summit and viewed when looking west towards the site located approximately 5.6km away.  
Date: 15-04-2025  
Time:



Viewpoint 2: View from the Arrow Junction Lookout Point, situated at the top of Crown Terrace escarpment, viewed when looking southwest towards the site located approximately 2km away.  
Date: 15-04-2025  
Time:

# Viewpoint Photographs



Viewpoint 3: View from the Gibbston Highway, SH6 and viewed when looking west towards the site located approximately 1km away.  
Date: 15-04-2025  
Time:



Viewpoint 4: View from the Lake Hayes-Arrow Junction Highway, SH6 and viewed when looking south towards the site located approximately 1km away.  
Date: 15-04-2025  
Time:

# Viewpoint Photographs



Viewpoint 5: View from the Lake Hayes-Arrow Junction Highway, SH6 and the Morven Ferry Road intersection when looking south towards the site located approximately 1km away.  
Date: 15-04-2025  
Time:



Viewpoint 6: View from the Twin Rivers Trail and viewed when looking south and west towards the site located approximately 150-300m away.  
Date: 15-04-2025  
Time:

# Viewpoint Photographs



Viewpoint 7: View from the Twin Rivers Trail and viewed when looking south and west towards the site located approximately 450m -1km away.  
Date: 15-04-2025  
Time:



Viewpoint 8: View from the intersection of Arrow Junction Road and Morven Ferry Road, viewed when looking south towards the site located approximately 400m away.  
Date: 15-04-2025  
Time:

# Viewpoint Photographs



Viewpoint 9: View from Morven Ferry Road, when looking south towards the site boundary, located approximately 10m away.

Date: 15-04-2025

Time: