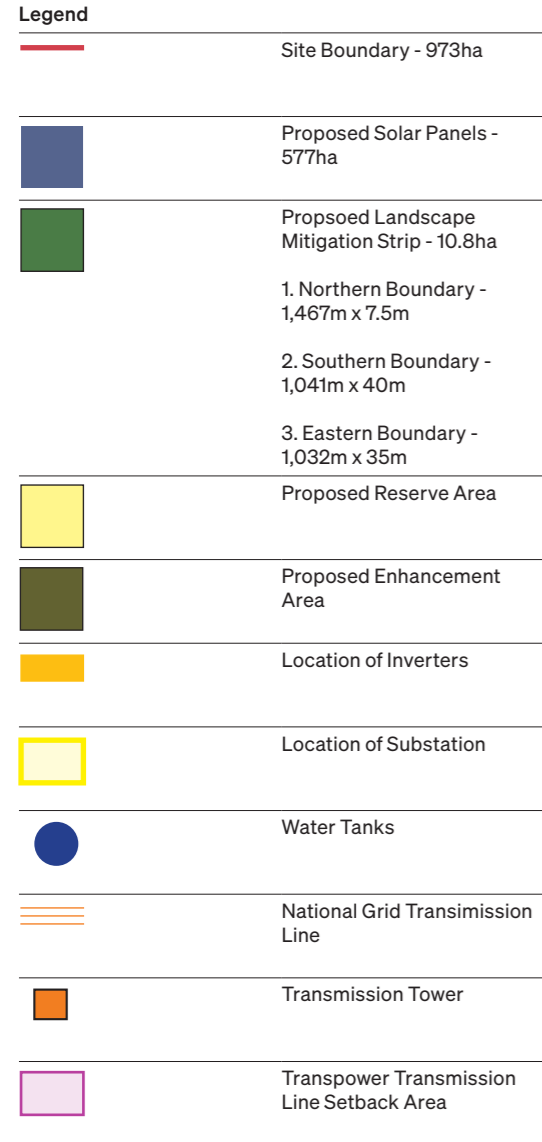




Proposed Landscape Mitigation Plan

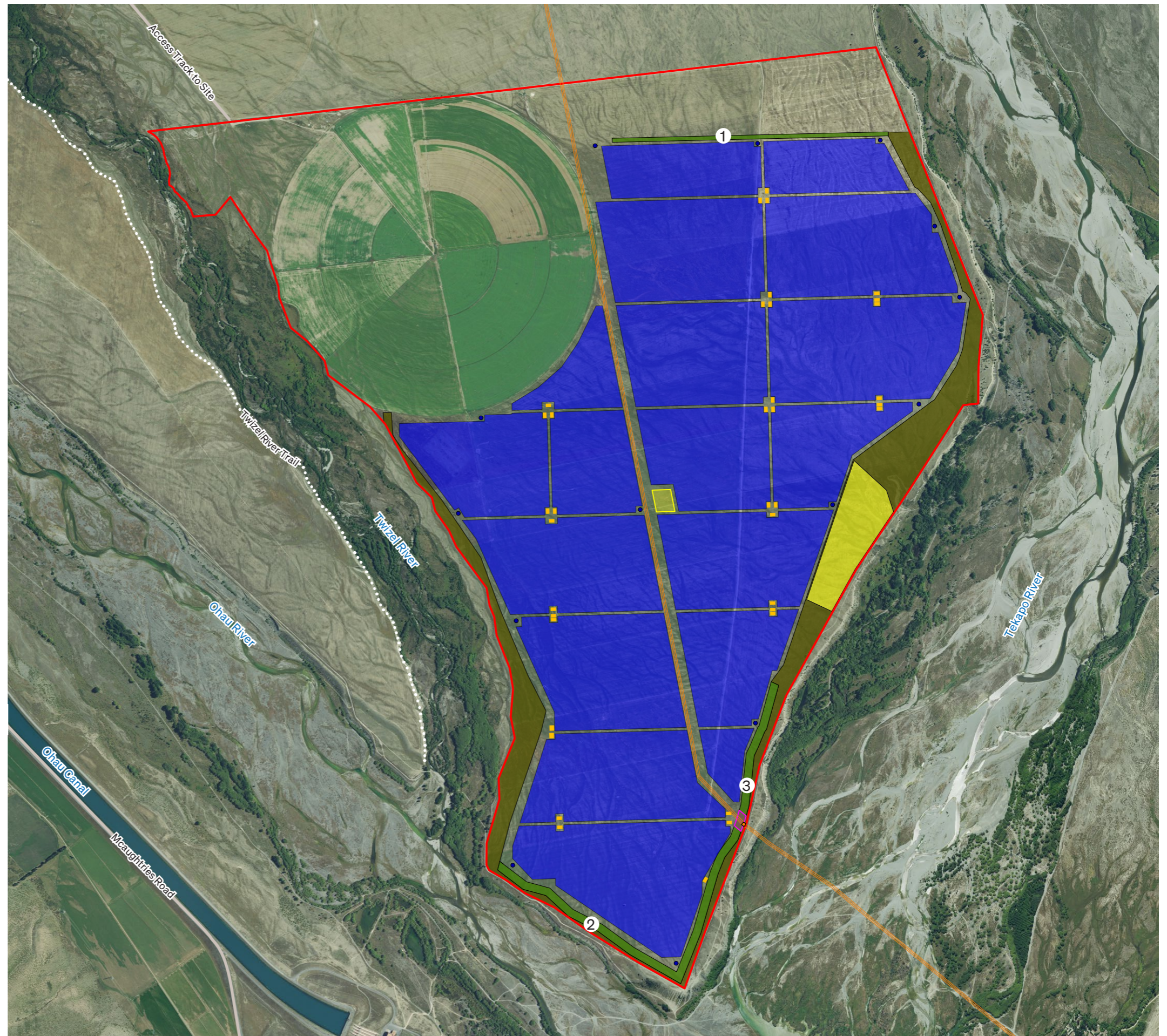


Note

- A. The proposed plant species within 12m either side of the Transpower Transmission Line's centreline will have a mature height of no more than 3m. Refer to Landscape Mitigation Plant Palette.
- B. The proposed plants within the Transpower Transmission Line Setback Area must be situated so when they are mature, they cannot fall and land within 4m of the transmission line. i.e. a 3m tall plant shall be planted 7m from the transmission.
- C. All plants will be setback 12m from the Transmission Tower.

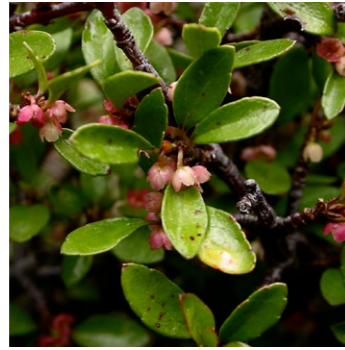


Scale 1:5,000 @ A3



Landscape Mitigation Plant Palette

Native Boundary Plants



Aristotelia fruticosa
Mountain Wineberry
Mature height: 5- 9m



Coprosma intertexta
Tumbledown Coprosma
Mature height: 5m



Coprosoma propinqua
Mingimingi
Mature height: 3m
Not threatened



Coprosma rigida
Rigid Coprosma
Mature height: 4m



Coprosma virescens
Mikimiki
Mature height: 3m



Corokia cotoneaster
Wire-Netting Bush
Mature height: 3m
Not Threatened



Discaria toumatou
Matagouri
Mature height: 4m
Not Threatened



Leptospermum scoparium
Manuka
Mature height: 4m



Olearia odorata
Scented tree daisy
Mature height: 6m
At Risk - Declining



Phyllocladus alpinus
Mountain Celery Pine
Mature height: 6m

Native Boundary Plants as per Note A



Carmichaelia kirkii
Kirk's Broom
Mature height: 2m



Carmichaelia petriei
Petrie's Broom
Mature height: 2m
At Risk - Declining



Ozothamnus leptophyllus
Cottonwood
Mature height: 2m

ROUGH MILNE MITCHELL
LANDSCAPE ARCHITECTS

Christchurch
Level Two, 69 Cambridge Terrace
Christchurch 8013
PO Box 3764 Christchurch 8140

info@rmmla.co.nz
+64 3 366 3268

Auckland
Level 12, Suite 6
Southern Cross Building
59 - 67 High Street, Auckland 1010

info@rmmla.co.nz
+64 21 244 8630

Nelson
116 Hardy Street
Nelson 7010

info@rmmla.co.nz
+64 27 250 0500

Dunedin
42 Stuart Street, Dunedin 9054

info@rmmla.co.nz
+64 3 477 2030

Wānaka
Level One, 24 Dungarvon Street,
Wānaka 9305
PO Box 349, Wānaka 9343

info@rmmla.co.nz
+64 3 974 7940

RMML

rmmla.co.nz