

Puke Kapo Hau - Mahinerangi Wind Farm Stage 2 – Draft Conditions of Consents

Notes

1. The ‘comment’ column has been provided to explain any amendments to those conditions proposed by the Applicant, and is not proposed to form part of the consent conditions.
2. Amendments are shown using ~~striketrough~~ and underline, with the Applicant’s proposed conditions provided on 15 April 2026 (and incorporating changes in response to comments from Otago Regional Council and Te Rūnanga o Ōtākou).
3. Note that numbering has not been corrected to protect cross-referencing, where the Applicant had deleted consent conditions.

CONSENT AUTHORITY:	Otago Regional Council
CONSENT HOLDER:	Tararua Wind Power Limited
CONSENT TYPE:	Land Use Consent, Water Permit and Discharge Permit (<u>RMFT25.008.01</u>)
ACTIVITY AUTHORISED:	The construction, operation and maintenance of Stage 2 of the Puke Kapo Hau - Mahinerangi Wind Farm and associated 110kV transmission line and poles to convey electricity between the Puke Kapo Hau - Mahinerangi Wind Farm Site and the existing National Grid Line
SITE LOCATION:	The ‘project site’ of the Puke Kapo Hau - Mahinerangi Wind Farm Stage 2 shown on Map 3 - Puke Kapo Hau Stage 2 Project Site (Wind Farm) and Map 4.1 - Puke Kapo Hau Stage 2 Project Site (Transmission Line) Appendix 1 Appendix 1 of this consent
LEGAL DESCRIPTION OF CONSENT LOCATION:	The relevant parts of the project site land shown on Map 3 - Puke Kapo Hau Stage 2 Project Site (Wind Farm) and Map 4.1 - Puke Kapo Hau Stage 2 Project Site (Transmission Line) Appendix 1
CONSENT DURATION:	See relevant consent

GENERAL CONDITIONS THAT APPLY TO ALL OTAGO REGIONAL COUNCIL CONSENTS

[Note – the ‘comment’ column has been provided for explanation purposes only, and is not proposed to form part of the consent conditions]

Condition Number	Condition	Panel Comment
Exercise of consents		
G1	<p>The activities authorised by these consents must be undertaken in general accordance with the information submitted to and authorised by the Environmental Protection Authority contained in the:</p> <ul style="list-style-type: none"> a) Puke Kapo Hau - Mahinerangi Wind Farm Stage 2 – Fast-track Approvals Act Application and Assessment of Environmental Effects dated 31 October 2025; b) Puke Kapo Hau Stage 2 Plans dated 31 October 2025; and c) Supporting technical documents submitted by the Consent Holder to the Environmental Protection Authority in support of its application for authorisation of Puke Kapo Hau - Mahinerangi Wind Farm Stage 2 under the Fast-track Approvals Act 2024. 	
G2	<p>In the event of any conflict or discrepancy between General Condition G1 and the conditions of these consents, the conditions will be determinative.</p>	
G3	<p>Pursuant to Clause 26(1), Schedule 5 of the Fast-track Approvals Act 2024, tThese consents lapse 10 years after the date of commencement of the consents unless:</p>	Reference to FTAA is unnecessary.

Condition Number	Condition	Panel Comment
	<p>d) The consent is given effect to; or</p> <p>e) The Consent Authority extends the period after which the consent lapses.</p>	
G4	<p>Pursuant to Section 134(1) of the Resource Management Act 1991, these consents must only be exercised by the Consent Holder, its successor, or any person acting under the prior written approval of the Consent Holder.</p>	This condition is unnecessary.
G5	<p>Prior to the commencement of the works authorised by these consents, the Consent Holder must ensure that all personnel working on the site are made aware of, and have access at all times to:</p> <p>a) All consent conditions; and</p> <p>b) All management and/or monitoring plans.</p> <p>Copies of these documents, including any amendments, the most recent certified version of these documents must be present on-site at all times while the work authorised by these consents is being undertaken.</p>	Amendment to refer to applicable documents.
G6	The Consent Holder must notify the Consent Authority in writing of the commencement date of construction works no less than 10 working days prior to the commencement of works.	
Review of Conditions		
G7	The Consent Authority may, in accordance with Sections 128 and 129 of the Resource Management Act 1991, within 3 months of the one yearly anniversary of the commencement of construction works authorised as part of these consents, <u>up to the end of the construction</u>	Amended for reasons discussed in the draft decision.

Condition Number	Condition	Panel Comment
	<p><u>period, and then</u> within 3 months of this anniversary at five yearly intervals thereafter, serve notice on the Consent Holder of its intention to review the conditions of these consents for any of the following purposes:</p> <ul style="list-style-type: none"> a). To review the effectiveness of the conditions of these consents in avoiding, remedying or mitigating any adverse effects on the environment that may arise from the exercise of these consents; b). To address any adverse effects on the environment that have arisen as a result of the exercise of these consents that were not anticipated at the time of commencement of these consents, including addressing any issues arising out of complaints; and c). To review the adequacy of, and necessity for, any of the management and/or monitoring plans that are part of the conditions of this consent. 	
Charges		
G8	<p>The Consent Holder must pay to the Consent Authority all required administration charges fixed by the Consent Authority pursuant to Section 36 of the Resource Management Act 1991 in relation to:</p> <ul style="list-style-type: none"> a) Administration, monitoring and inspection in relation to these consents; and b) Charges authorised by regulations. 	
Design Drawings		

Condition Number	Condition	Panel Comment
G9	<p>At least 20 working days prior to the commencement of construction works authorised as part of these consents, the Consent Holder must provide the Consent Authority with a set of final design drawings for Puke Kapo Hau. The final design drawings must, as a minimum, include:</p> <ul style="list-style-type: none"> a) The layout and spacing of the wind turbines; b) The specifications of the wind turbines, turbine platforms, foundations and hard stand areas; c) The location and specifications of all supporting infrastructure, including permanent stormwater infrastructure (including Lee Stream Tributary Culvert and associated fish passage provisions), along with a supporting design report and calculations; d) The layout and pavement composition of the internal access road network; e) The location of all fill disposal sites; f) Engineering plans and sections of earthworks, including erosion and sediment control measures (locations, dimensions, capacity etc) and supporting calculations and design drawings; and g) A works programme, including any staging and the proposed start date of the works. 	
Management Plans		
Certification Process for Draft Management Plans		
G12	<p>The following draft management plans prepared by the Consent Holder and submitted with the Puke Kapo Hau – Mahinerangi Wind Farm Stage 2 – Fast-track Approvals Act Application</p>	Reference needed for all final management plans to be submitted

Condition Number	Condition	Panel Comment
	<p>dated 31 MM10 2025 must be submitted as finals to the Consent Authority for written certification, not less than 20 working days prior to construction works commencing:</p> <ul style="list-style-type: none"> a) Draft Environmental Construction; Management Plan (<u>ECMP</u>); b) Draft Earthworks Management Plan (<u>EMP</u>); c) Ecological Monitoring and Management Plan (<u>EMMP</u>); d) Chemical Treatment Management Plan (<u>CTMP</u>); e) <u>Rehabilitation Management Plan (RMP)</u>; f) <u>Wetland Monitoring and Management Plan (WMMP)</u>; g) <u>Wetland and Aquatic Offsetting and Compensation Plan (WAOCP)</u>; h) <u>Environmental Monitoring and Reporting Plan (EMRP)</u>; and i) <u>Native Fish Recovery Plan (NFRP)</u>. 	
G12A	<p>Each management plan required under Condition G12 must, as a minimum, include:</p> <ul style="list-style-type: none"> a) A clear description of the activities covered by the plan; b) Identification of the environmental values and features requiring management; c) The management and mitigation measures to be implemented; d) Where relevant, the monitoring methods, performance criteria, and reporting requirements; and e) The name and contact details of the person(s) responsible for implementing the plan, including escalation pathways. 	

Condition Number	Condition	Panel Comment
G13	<p>Certification is required to verify that the management plans:</p> <ul style="list-style-type: none"> a) Include actions, methods and monitoring programmes as where appropriate to meet the objectives in Conditions G16 (ECMP), G18 (EMP), G21 (CTMP), and G23 (EMMP), G24 (RMP), G26 (WMMP), G28 (WAOCP) and Condition 12 of Water Permit RMFT25.008.11 (NFRP); and b) Satisfies the objectives requirements in Conditions G12A, G198 (EMP), G22 (CTMP), G25 (RMP), G27 (WMMP), G29 (WAOCP), G30A (EMRP) and Condition 13 of Water Permit RMFT25.008.11 (NFRP). 	<p>Mirror format of conditions, with objectives first and requirements following, and include for all submitted management plans and their relevant conditions</p> <p>Certification is limited to confirmation that objectives and requirements are met.</p>
G13A	<p>The Consent Holder must follow the process set out below for the certification of the management plans identified in G13, from the Consent Authority:</p> <ul style="list-style-type: none"> a) Documents requiring written certification must be submitted to the Consent Authority in electronic form; b) Subject to (d) and (e) below, works to which the management plans relate must not commence until the Consent Holder has received written certification from the Consent Authority; c) If satisfied, tThe Consent Authority will provide written certification to the Consent Holder within 5 working days, <u>unless (d) below applies</u>; d) If the Consent Authority's response is that they are not able to certify the documents, the reasons are to be provided in writing, and the Consent Holder must consider the Consent Authority's reasons and resubmit amended documents for written certification; <u>and</u> 	<p>Minor changes to improve clarity and certainty.</p> <p>We consider that 5 wd in (c) would be tight for ORC to meet. Can ORC confirm that this is achievable or suggest an alternative?</p>

Condition Number	Condition	Panel Comment
	<p>e) Certification, including of and recertification of amendments to management plans, under this condition is for the purpose of confirming that the management plans meet the relevant objectives and requirements set out in these consents and is not an approval of the merits of the plans or a reassessment of the consented activity.</p>	
Amendments to Certified Management Plans		
G14	<p>The Consent Holder may make amendments to the Environmental Construction Management Plan and associated management and/or monitoring plans (as listed in conditions G12 and G16).</p> <p>Any such amendments must:</p> <ul style="list-style-type: none"> a) Continue to meet the objectives of the relevant plan; b) Remain consistent with the conditions of this resource consent; and c) Be subject to the certification process required under Condition G13A, prior to implementation of the amendment. 	
Environmental Construction Management Plan (ECMP)		
G16	<p>The ECMP sets out the practices and procedures to be adopted to ensure that all resource consent conditions relating to the construction, operation and rehabilitation of the Puke Kapo Hau - Mahinerangi Wind Farm Stage 2 are complied with. The objectives of the ECMP are to:</p> <ul style="list-style-type: none"> a) Minimise the overall area of disturbance, so as to reduce the potential impact on fauna, flora and waterbodies; 	<p>Archaeological considerations necessary for earthworks.</p>

Condition Number	Condition	Panel Comment
	<ul style="list-style-type: none"> b) Minimise the generation of sediment and sediment laden runoff; c) Ensure that appropriate monitoring and reporting of all activities is undertaken in accordance with the <u>resource</u> consent conditions; d) Ensure that the earthworks are undertaken in a manner that provides for final surfaces which are suitable for rehabilitation; e) <u>Ensure that earthworks are undertaken in a manner that minimises adverse effects on archaeological values;</u> f) To e <u>Ensure natural flow paths are maintained to natural inland wetlands during construction; and</u> g) Provide a framework for the individual management plans including but not limited to: <ul style="list-style-type: none"> i. Earthworks Management Plan; ii. <u>Archaeological Management Plan; and</u> iii. Ecological Monitoring and Management Plan. 	
G17	The Consent Holder must at all times construct, operate and maintain the Puke Kapo Hau - Mahinerangi Wind Farm Stage 2 in accordance with the certified ECMP and associated management and/or monitoring plans (as listed in conditions G12 and G16).	
Earthworks Management Plan (including Erosion and Sediment Control Measures <u>and Chemical Treatment Management Plan</u>)		

Condition Number	Condition	Panel Comment
G18	<p>The EMP must achieve the following objectives:</p> <ul style="list-style-type: none"> a) To minimise the overall area of disturbance, to reduce the potential impact on wetlands and streams; b) To minimise the generation of sediment and sediment laden runoff; c) To ensure that the earthworks are undertaken in a manner that provides for final surfaces which are suitable for rehabilitation where rehabilitation is proposed; d) To ensure the control and/or mitigation of any potential adverse effects of dust emissions, sediment run-off or contamination of stormwater; and e) To ensure that earthworks are undertaken in a manner that provides for compliance with relevant consent conditions in respect of water quality criteria applicable to discharge permits, and avoid, remedy or mitigate potential adverse effects on the environment; and f) Contour the surplus fill disposal areas in such a manner that they to maintain natural flow paths to natural wetland catchments and do not impound water nor divert natural flow paths to adjacent natural wetland catchments; and g) <u>Provide a framework for the management of the following, including individual management plans as required:</u> <ul style="list-style-type: none"> a. <u>Chemical treatment; and</u> b. <u>Erosion and sediment control.</u> 	<p>Minor change to improve clarity and consistency with objective for ECMP.</p> <p>Clarify relationships with management plans.</p>

Condition Number	Condition	Panel Comment
G19	<p>In order to achieve the objectives established in Condition G18 the erosion and sediment control measures prepared under the EMP must, as a minimum, contain the following details:</p> <ul style="list-style-type: none"> a) Specific control measures (including details on their locations, dimensions <u>and</u> capacity) with details on how the earthworks and implementation of control measures will be staged; b) Supporting calculations and design drawings for all stages of earthworks; c) Catchment boundaries and contour information; d) Details of construction methods; e) Timing and duration of construction and operation of control works; f) Details relating to the management of exposed areas; and g) Monitoring and maintenance requirements, including: <ul style="list-style-type: none"> i. monitoring methodologies, frequency, and thresholds; ii. record keeping and maintenance requirements for control works; and h) Removal of control works, including stabilisation of the catchment and rehabilitation requirements. 	Minor correction
G20	<p>The erosion and sediment control measures outlined within the EMP must generally comply with the requirements of Erosion and Sediment Control Guide for Land Disturbing Activities in the Auckland Region (Guidance Document 2016/05).</p>	<p>The Guidelines require amendments to make measures site specific. Considering this, “generally” does not provide sufficient certainty.</p>

Condition Number	Condition	Panel Comment
G21	<p>The Chemical Treatment Management Plan (CTMP) must achieve the following objectives:</p> <ul style="list-style-type: none"> a) Identify where chemical treatment will enhance the efficiency of all sediment retention devices; b) Minimise the potential effects of sediment loading in waterbodies; c) Ensure all water discharged from stormwater and/or dewatering treatment systems comply with the requirements of consent conditions. d) Specify monitoring methods and reporting requirements. 	
G22	<p>In order to achieve the objectives established in Condition G21, as a minimum the CTMP must contain the following details:</p> <ul style="list-style-type: none"> a) Bench test results and an analysis of site soil reactivity to common flocculants based on those results; b) If the analysis in (a) indicates that chemical treatment will enhance the efficiency of sediment retention devices, the CMP must outline the following specific design details of the flocculation system: <ul style="list-style-type: none"> i. Monitoring (including pH and any other testing procedures) and maintenance (including post-storm) requirements for the flocculation system, including a record keeping system; ii. Details of optimum flocculant dosage (including assumptions), including how chemical dosage has been adjusted to the minimum level necessary to achieve the most effective flocculent in terms of sediment removal; iii. A spill contingency plan; and 	

Condition Number	Condition	Panel Comment
	iv. Contact details of the person responsible for the operation and maintenance of the flocculation treatment system and the organisational structure to which this person must report.	
Ecological Monitoring and Management Plan		
G23	<p>The objective of the Ecological Monitoring and Management Plan is to set out the practices and procedures to be adopted to ensure that all resource consent conditions relating to ecological monitoring and management are complied with. In respect to the activities authorised in these consents, the Ecological Monitoring and Management Plan provides a framework for the individual management plans listed:</p> <ul style="list-style-type: none"> a) Rehabilitation Management Plan; b) Wetland Monitoring and Management Plan; c) Wetland and Aquatic Offsetting Plan; d) Water Quality Monitoring Plan; and e) Native Fish Recovery Plan. 	
Rehabilitation Management Plan		
G24	<p>The Rehabilitation Management Plan (RMP) must achieve the following objectives:</p> <ul style="list-style-type: none"> a) Following the practical completion of earthworks, disturbed areas and fill batters, create stable landforms by establishing vegetation cover (which may include pasture) 	

Condition Number	Condition	Panel Comment
	<p>and erosion-resistant surfaces that have characteristics that favour growth of sustainable plant communities and manage run off and sediment generation; and</p> <p>b) Provide methods for rehabilitation of snow tussock in the Wetland and Aquatic Offsetting Sites.</p>	
G25	<p>In order to achieve the objectives established in Condition G24, the RMP must, as a minimum, contain the following details: contain the following details:</p> <p>a) How cut batters will be stabilised and rehabilitated;</p> <p>b) How topsoil will be stockpiled and stabilised;</p> <p>c) Rehabilitation of construction sites in pasture;</p> <p>d) Rehabilitation of snow tussock within the Wetland and Aquatic Offsetting Sites, including on-site sourcing, storage and planting methodology;</p> <p>e) Stream/wetland rehabilitation;</p> <p>f) Monitoring requirements;</p> <p>g) Rehabilitation completion criteria; and</p> <p>h) Contact details of the key personnel responsible for rehabilitation of the site.</p>	
Wetland Monitoring and Management Plan		
G26	<p>The objective of the Wetland Monitoring and Management Plan (WMMP) is to:</p> <p>a) Minimise Manage actual or potential adverse effects to maintain on the long-term ecological health and function of wetlands, including through offsetting and</p>	<p>Rewording to reflect WAOCP and Panel findings regarding offsetting and compensation</p>

Condition Number	Condition	Panel Comment
	<p><u>compensation where identified in the Wetland and Aquatic Offsetting and Compensation Plan as a result of the construction works;</u></p> <p>b) <u>Monitor wetlands within 100 metres of proposed construction works and implement to inform</u> appropriate management measures to ensure (a) is achieved; and</p> <p>c) <u>Ensure that, Following completion of construction, adverse effects on wetland ecological health and function is monitored to ensure that are appropriately managed through post-construction monitoring in accordance with the monitoring periods specified in this Plan.</u></p>	
G27	<p>In order to achieve the objective established in Condition G26, the WMMP must, as a minimum, contain the following details:</p> <p>a) <u>Monitoring programmes to be undertaken prior to construction, during construction and post construction to inform achievement of the objectives.</u></p> <p>b) The methodology for wetland photopoint monitoring, collection of monitoring metrics, and vegetation and erosion monitoring; and</p> <p>c) Management actions to be taken if an adverse effect on vegetation is found;</p> <p>d) Reporting procedures; and</p> <p>b)d) <u>Trigger(s) for the review of the WMMP (if required).</u></p>	Clarify the general time periods for monitoring programmes
Wetland and Aquatic Offsetting and Compensation Plan		
G28	The objective of the Wetland and Aquatic Offsetting <u>and Compensation Plan</u> (WAOCP) is to:	Rewording to reflect Panel findings regarding offsetting and compensation

Condition Number	Condition	Panel Comment
	<ul style="list-style-type: none"> a) Offset <u>and compensate</u> for loss of wetland and aquatic habitat that cannot be avoided, minimised or remedied; and b) Ensure no net loss of ecological values. 	
G29	<p>In order to achieve the objectives established in Condition G28 the WAOP must, as a minimum, contain the following details:</p> <ul style="list-style-type: none"> a) The length of suitable stream habitat to be enhanced for Eldon's galaxiid <u>minimum length of suitable stream habitat required for to offset, and compensate for, the loss of stream values and extent Eldon's galaxiid in at the Aquatic Offsetting and Compensation Site;</u> b) Fencing requirements for the offsetting sites, including stock-proof fencing, fence location, and the requirements for fence monitoring and maintenance; c) Weed control and monitoring to be undertaken within the offsetting sites; and d) Record keeping, monitoring requirements and completion of offsetting works. 	Reworded (a) to provide additional clarity, and to reflect Panel findings regarding offsetting and compensation
G29A	The Wetland and Aquatic offsetting <u>and compensation</u> Sites must be located in accordance with the area shown in Appendix 2 of these consents.	Rewording to reflect Panel findings regarding offsetting and compensation
Environmental Monitoring and Reporting Plan and Report		
G30	An Environmental Monitoring <u>and Reporting</u> Plan must be prepared by the Consent Holder that sets out a schedule of monitoring to be undertaken and requirements for reporting of these results in accordance with the conditions of resource consent.	Minor correction

Condition Number	Condition	Panel Comment
30A	<p>The Consent Holder must prepare and submit an annual Environmental Monitoring Report to the Consent Authority prior to each anniversary of the commencement of the resource consents. The report must set out the monitoring results in accordance with the conditions of these resource consents and must cover the preceding 12-month monitoring period. As a minimum, the Environmental Monitoring Report must:</p> <ul style="list-style-type: none"> i. Summarise all environmental monitoring undertaken; ii. Summarise all the data collected, as required under the Environmental Monitoring and Reporting Plan and Report outlined above, and any other conditions of these resource consents. This may include graphical presentation, statistical summations of monitoring data, critical analysis of the information in terms of compliance and environmental effects; iii. Highlight and discuss any relevant environmental trends; iv. Report and discuss any difficulties in compliance with the conditions of the consent and the measures adopted to rectify problems; and <p>b) List any maintenance works needed, proposed or undertaken to ensure compliance with the conditions of the consent or to facilitate operations.</p>	<p>The Panel considers that this Report should be provided to DoC and Rūnaka. We invite amendments to conditions to reflect this, subject to agreement from DoC and Rūnaka.</p>
Earthworks and construction		
G31	<p>All earthmoving machinery, and ancillary equipment must be operated in a manner which ensures spillages of fuel, oil and similar contaminants are prevented to the greatest extent practicable. Refuelling and lubrication activities must be carried at least 10 metres from any</p>	<p>Minor correction.</p>

Condition Number	Condition	Panel Comment
	waterbody, or overland flow path, that is sufficient to ensure that any spillage can be contained and not enter surface water.	
G32	All disturbed or cut vegetation, soil or debris must be placed in a position where it will not enter, nor cause erosion of, any waterbody.	
G33	All disturbed areas, other than the turbine hard stand areas and access tracks, must be progressively rehabilitated in accordance with the objectives of the ECMP outlined in Condition G16 and the objectives of the RMP outlined in Condition G24.	
G34	Upon completion of the approved works, all construction machinery, plant, temporary fencing, signage, chemicals, rubbish, debris, surplus materials and associated equipment must be removed from the site, and the site must be left in a tidy condition.	
<u>G35</u>	<p>During construction works authorised by this consent, the Consent Holder must take all practicable steps to minimise the spread of pest plants and aquatic weeds. In particular, the Consent Holder must:</p> <ul style="list-style-type: none"> a) Prior to entering the site, ensure all machinery and equipment is cleaned within the designated wash-down areas established in accordance with the approved Environmental Construction Management Plan (including Section 2.3 – Wash Down Water), to remove all visible soil, sediment, and/or vegetation. Where machinery or equipment has previously been used in waterbodies, the cleaning shall include the 	

Condition Number	Condition	Panel Comment
	<p>use of suitable chemical or treatment methods to kill <i>Didymosphenia germinata</i> (didymo).</p> <p>b) Avoid construction works in areas where aquatic pest plants, including <i>Lagarosiphon major</i>, are known to be present, where practicable;</p> <p>c) To prevent the spread of <i>Didymosphenia germinata</i> or any other pest plant, not use machinery in the bed or berm of a waterbody that has been used in any area known to be affected by pest plants within the previous 20 working days, unless the machinery has been thoroughly cleaned using an appropriate decontamination solution within the designated wash-down areas;</p> <p>d) Remove any vegetation caught on machinery and equipment at the completion of construction works; and</p> <p>e) At the completion of construction works and prior to leaving the site, ensure all machinery and equipment is washed down within the designated wash-down areas to reduce the potential for pest species being spread from the site.</p>	
Erosion and sediment control		
G36	The Consent Holder must ensure that run-off from areas where soil disturbance/earthworks has occurred is treated in accordance with the erosion and sediment control methods as outlined in the EMP prior to discharge.	
G37	Sediment retention devices must be designed and operated to achieve the following outcomes:	Minor correction.

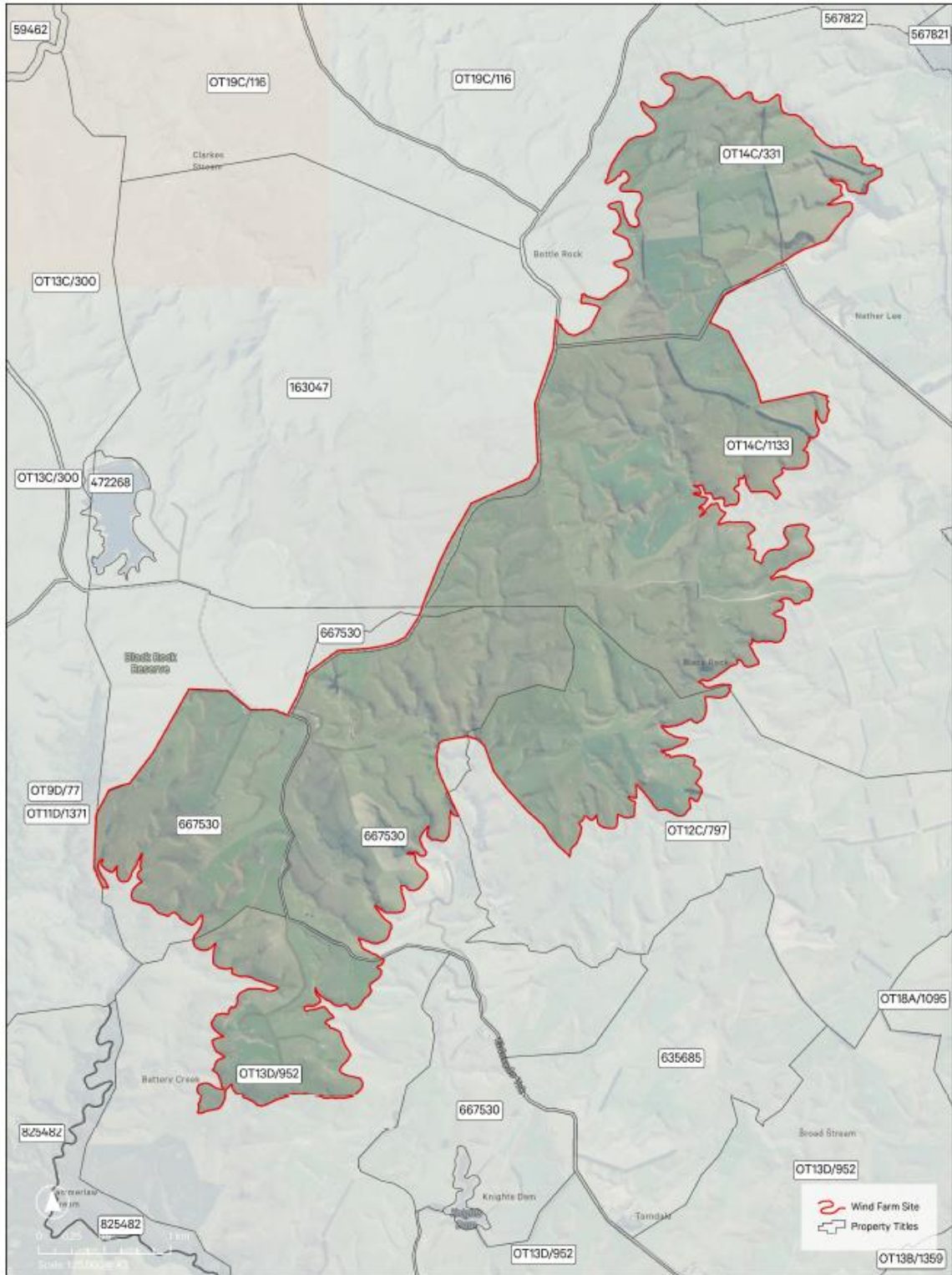
Condition Number	Condition	Panel Comment
	<p>a) Clarity at the point of discharge of no less than a 100mm mm <u>millimetres</u> as measured by Secchi disc, clarity tube or equivalent; and</p> <p>b) A pH of water contained within the sediment retention device of not less than 5.5 and not greater than 8.5 pH units.</p>	
G38	<p>The Consent Holder must inspect, maintain, and, where necessary, repair sediment control devices in accordance with the EMP. If there is any evidence that the water quality downstream of the site is declining and this is attributable to the onsite construction activities or performance of sediment control devices, the Consent Holder must immediately undertake any necessary maintenance of sediment control devices or take appropriate measures in order to ensure the ongoing and future effectiveness of water quality controls on site.</p>	
Archaeology		
G39	<p><u>The Consent Holder shall ensure that the construction of the Puke Kapo Hau Mahinerangi Wind Farm Stage 2 is undertaken in accordance with the requirements of the Archaeological Management Plan that forms Part C of the Puke Kapo Hau Mahinerangi Wind Farm Stage 2 – Fast-Track Approvals Act Application dated DD31 MM10 2025 and subsequent amendments as at 5 June 2026.</u></p>	<p>Addition for consistency across CDC and ORC consents, and consistent with Panel findings</p>
G40	<p><u>The consent holder shall ensure that all construction personnel involved in site disturbance activities are suitably trained in the requirements of the Accidental Discovery Protocols, and identification of archaeological sites and/or artefacts.</u></p>	<p>Addition for consistency across CDC and ORC consents, and consistent with Panel findings</p>

Condition Number	Condition	Panel Comment
G41	<ul style="list-style-type: none"> i) <u>If an unidentified archaeological site is located during works, the following applies:</u> ii) <u>Work must cease immediately at that place and within 20m around the site.</u> iii) <u>The contractor must shut down all machinery, secure the area, and advise the Site Manager.</u> iv) <u>The Site Manager must secure the site and notify the Heritage New Zealand Regional Archaeologist. Further assessment by an archaeologist may be required.</u> v) <u>If the site is of Māori origin, the Site Manager must notify the Heritage New Zealand Regional Archaeologist Te Rūnanga o Ōtākou of the discovery and ensure site access to enable appropriate cultural procedures and tikaka to be undertaken, as long as all statutory requirements under legislation are met (Heritage New Zealand Pouhere Taonga Act, Protected Objects Act).</u> vi) <u>If human remains (kōiwi) are uncovered the Site Manager must advise the Heritage New Zealand Regional Archaeologist, NZ Police and Te Rūnanga o Ōtākou and the above process under 4 must apply. Te Rūnanga o Ōtākou will lead the management of any kōiwi tangata (human remains of a Māori person) that have been uncovered, in line with the Te Rūnanga o Ngāi Tahu Kōiwi Tangata policy 2019. Remains are not to be moved until such time as Te Rūnanga o Ōtākou and Heritage New Zealand have responded.</u> vii) <u>Works affecting the archaeological site and any human remains (kōiwi) must not resume until Heritage New Zealand Pouhere Taonga gives written approval for work to continue. Works affecting a site of Māori origin or containing kōiwi tangata must</u> 	<p>Addition for consistency across CDC and ORC consents, and consistent with Panel findings</p>

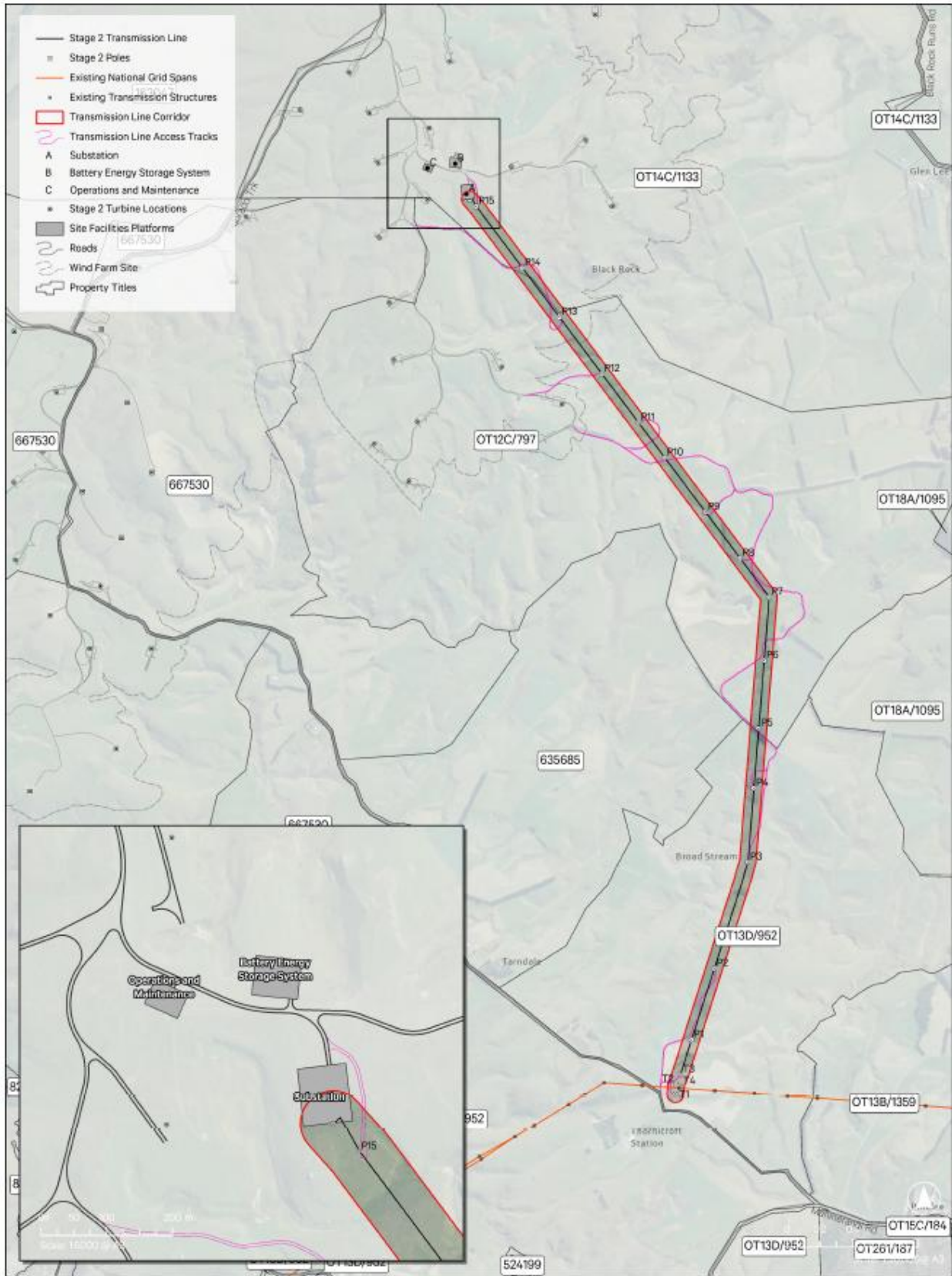
Condition Number	Condition	Panel Comment
	<p><u>not resume until Te Rūnanga o Ōtākou give written approval for work to continue. Further assessment by an archaeologist may be required.</u></p> <p>viii) <u>Where iwi so request, any information recorded as the result of the find such as a description of location and content, is to be provided for their records.</u></p> <p>ix) <u>Heritage New Zealand Pouhere Taonga will advise if an archaeological authority under the Heritage New Zealand Pouhere Taonga Act 2014 is required for works to continue.</u></p> <p><u>It is an offence under Section 87 of the Heritage New Zealand Pouhere Taonga Act 2014 to modify or destroy an archaeological site without an authority from Heritage New Zealand irrespective of whether the works are permitted or consent has been issued under the Resource Management Act.</u></p>	
Submission of information to the Consent Authority		
	<p>Advice note: Where information is required to be provided to the Consent Authority in the conditions of these consents, this is to be provided in writing to compliance@orc.govt.nz. The email heading is to reference the consent number and the condition(s) the information relates to.</p>	

APPENDIX 1

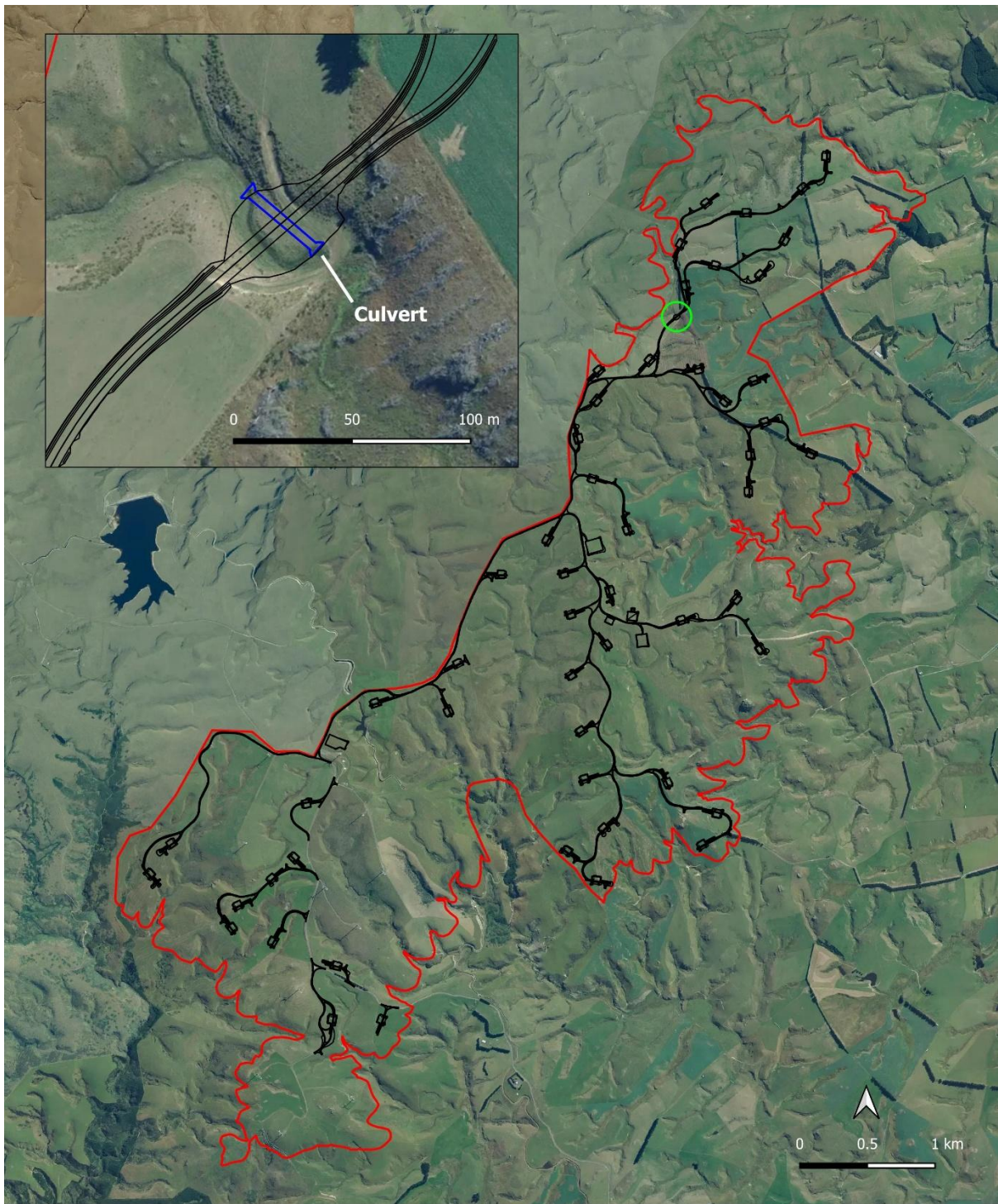
MAP 3 - PUKE KAPO HAU STAGE 2 PROJECT SITE (WIND FARM)



MAP 4.1 - PUKE KAPO HAU STAGE 2 PROJECT SITE (TRANSMISSION LINE)



LOCATION OF LEE STREAM TRIBUTARY CULVERT



LEVEL 1, 426 MORAY PLACE
DUNEDIN 9016
NEW ZEALAND
www.slrconsulting.com

The content contained within this document may be based on third party data. SLR Consulting New Zealand Ltd does not guarantee the accuracy of such information.

Project no.:	810.031205.00001
Date:	14 July 2025
Drawn by:	SR
Scale:	1:35,000
Sheet size:	A4
Projection:	NZGD 2000/NZTM 2000

Legend

- Culvert site
- Stage 2 Layout
- Windfarm Site

Tararua Wind Power Limited

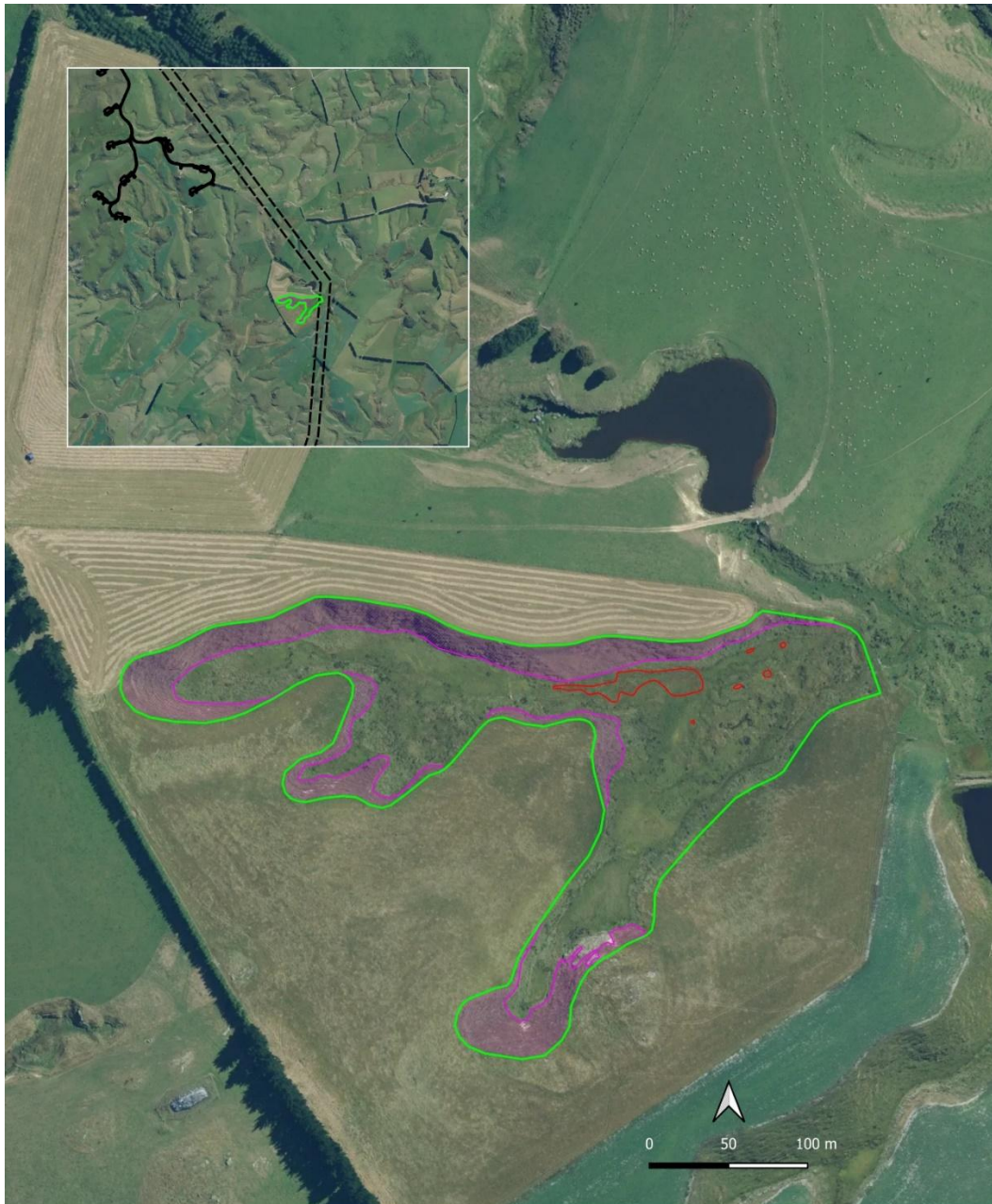
Mahinerangi Wind Farm

Stage 2

APPENDIX 2 – WETLAND AND AQUATIC OFFSETTING AND COMPENSATION SITES

Wetland Offsetting and Compensation Site





SLR LEVEL 1, 426 MORAY PLACE
DUNEDIN 9016
NEW ZEALAND
www.slrconsulting.com

The content contained within this document may be based on third party data. SLR Consulting New Zealand Ltd does not guarantee the accuracy of such information.

Project no.: 810.031205.00001
Date: 6 March 2026
Drawn by: SR
Scale: 1:3,000
Sheet size: A4
Projection: NZGD 2000/NZTM 2000

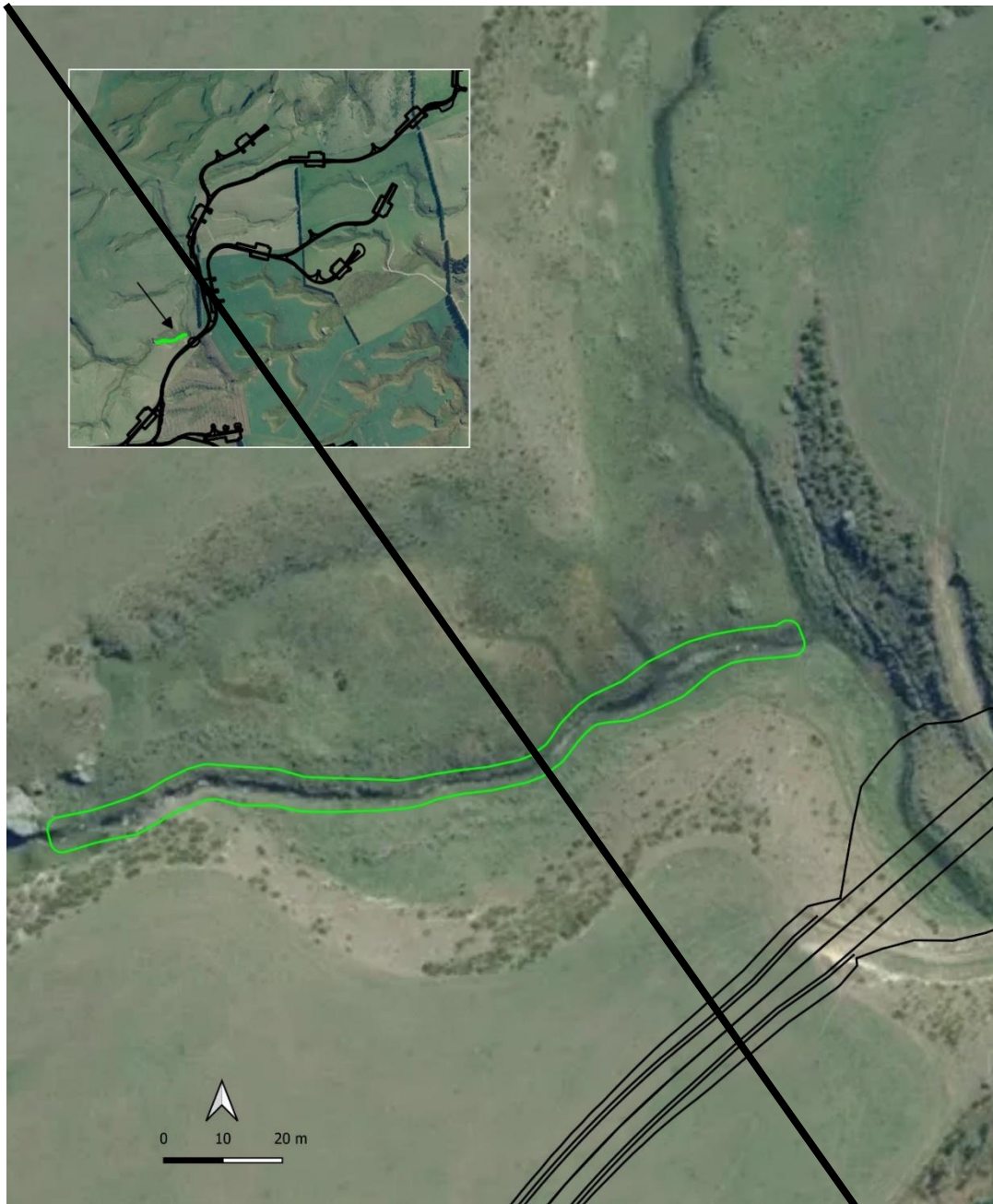
Legend

- Stage 2 Layout
- Transmission Corridor
- Carex tenuiculmis
- Wetland Offsetting Site
- Snow tussock transfer site

Tararua Wind Power Limited
Mahinerangi Wind Farm
Stage 2

* Indicative boundary - see Section 7.0 of Wetland and Aquatic Compensation Offsetting Plan for fencing requirements.

Aquatic Offsetting Site



SLR
 LEVEL 1, 426 MORAY PLACE
 DUNEDIN 9016
 NEW ZEALAND
 www.slrconsulting.com

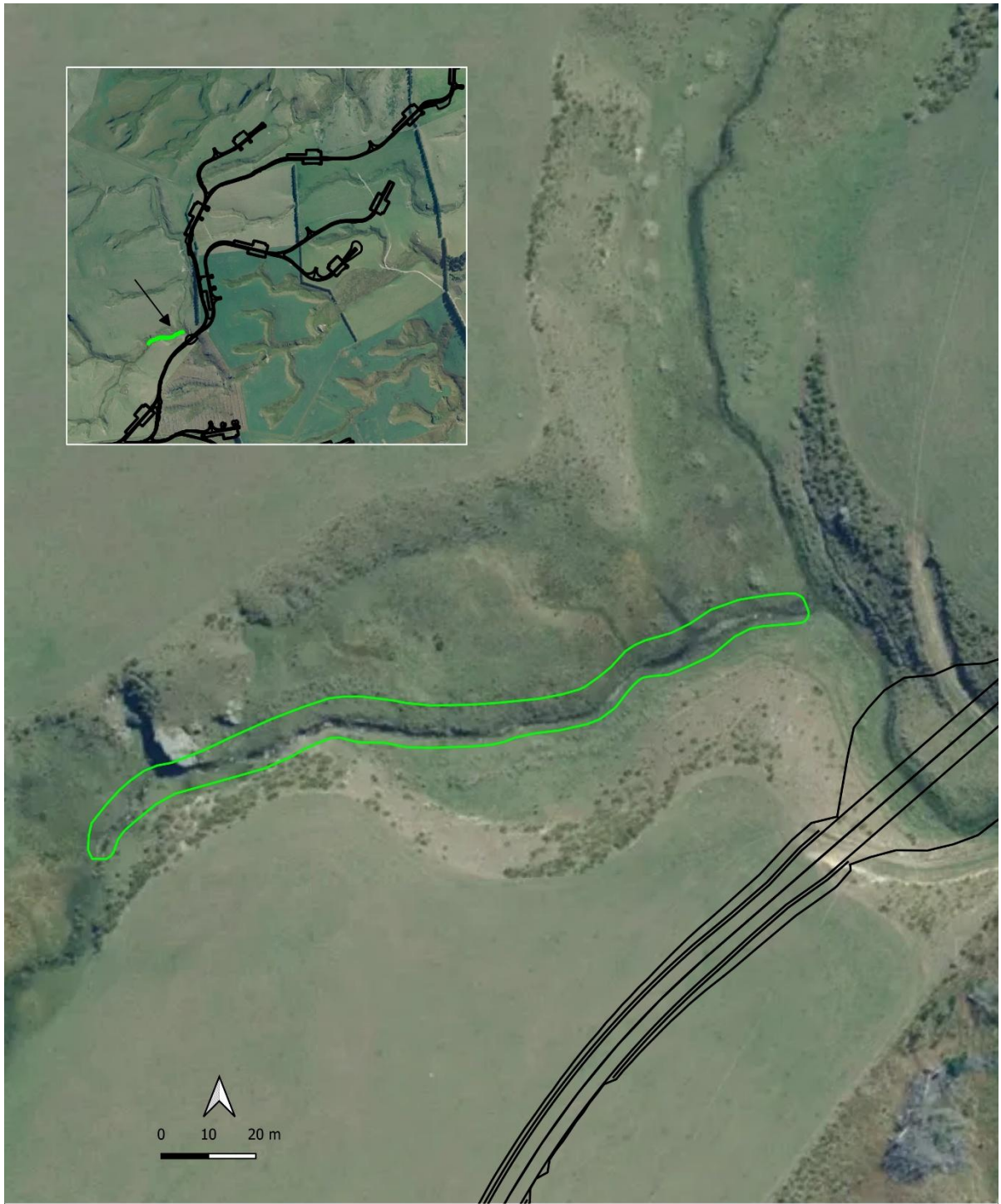
The content contained within this document may be based on third party data. SLR Consulting New Zealand Ltd does not guarantee the accuracy of such information.

Project no.:	810.031205.00001
Date:	4 September 2025
Drawn by:	SR
Scale:	1:800
Sheet size:	A4
Projection:	NZGD 2000/NZTM 2000

Legend

- Aquatic Compensation Site
- Stage 2 Layout

Taranua Wind Power Limited
Mahinerangi Wind Farm
Stage 2



LEVEL 1, 426 MORAY PLACE
DUNEDIN 9016
NEW ZEALAND
www.slrconsulting.com

The content contained within this document may be based on third party data. SLR Consulting New Zealand Ltd does not guarantee the accuracy of such information.

Project no.:	810.031205.00001
Date:	20 February 2026
Drawn by:	SR
Scale:	1:1,000
Sheet size:	A4
Projection:	NZGD 2000/NZTM 2000

Legend

-  Stage 2 Layout
-  Aquatic Offsetting Site

Tararua Wind Power Limited

Mahinerangi Wind Farm

Stage 2

* The green line is set back approximately 2 m from the edge of the stream channel.

SPECIFIC REGIONAL CONSENTS

CONSENT TYPE:	Land Use Consent (<u>RMFT25.008.02</u>)
ACTIVITY AUTHORISED:	To install a culvert within the bed of a waterbody and the associated disturbance of the bed of the waterbody
SITE LOCATION:	Lee Stream Tributary crossing at coordinate 45°44'5.00"S, 169°54'53.71"E within the 'project site' of the Puke Kapo Hau - Mahinerangi Wind Farm Stage 2 shown in Appendix 1 of this consent
AQUATIC OFFSETTING SITE LOCATION:	As shown in Appendix 2 of this consent
LEGAL DESCRIPTION OF CONSENT LOCATION:	The relevant parts of the project site land shown on Map 3 - Puke Kapo Hau Stage 2 Project Site (Wind Farm) in Appendix 1

Condition Number	Condition	Comment
Exercise of consents		
1	<p>The activities authorised by this consent must be undertaken in general accordance with the plans and all information submitted with the application, except where otherwise required by this consent including, where relevant, General Conditions G1 – G38 of RMFT25.00.01.</p> <p>In the event of any conflict or discrepancy between General Conditions and the conditions of this consent, the conditions of this consent will be determinative.</p>	Note: general condition number references may need changing.
1A	The duration of consent shall be 35 years from the commencement of the consent.	
2	This consent must be exercised in conjunction with consent number RMFT25.008.08 (Discharge Permit for the purposes of installing a culvert), RMFT25.008.11 (To temporarily divert Lee Stream Tributary whilst erecting a culvert) and RMFT25.008.12 (To construct specified infrastructure (including earthworks, land disturbance, vegetation removal and stormwater discharge) in or within 10m metres of natural inland wetlands).	The Lee Stream tributary will be permanently diverted from its natural bed
2A	<u>The design of the culvert must be in accordance with the New Zealand Fish Passage Guidelines (NIWA, 2024)</u>	Inserted in response to ORC comments.

Condition Number	Condition	Comment
3	<p>When undertaking works within a waterbody for the purpose of installing the culvert in the Lee Stream Tributary, the Consent Holder must:</p> <ul style="list-style-type: none"> a) Undertake works, as far as practicable, during periods of dry weather and low flow where no significant rainfall is forecast, and schedule works to minimise the likelihood of undertaking activities during elevated flow conditions; b) Undertake works within the-wetted bed of the stream for the shortest practicable timeframe using temporary water diversion measures, offline construction and staged construction sequencing; c) Ensure that where flood events occur during construction and result in damage to completed or partially completed works, reinstatement is, as far as practicable, undertaken during the recession of the flood while flows remain naturally turbid; d) Ensure that sediment losses to the waterbody are avoided where practicable and that appropriate sediment and erosion control measures are installed prior to earthworks commencing and maintained until disturbed areas are permanently stabilised; e) Ensure that all disturbed vegetation, soil or other material is deposited, stockpiled or contained to prevent material 	

Condition Number	Condition	Comment
	<p>entering the stream or causing diversion, damming or blockage of the stream, causing an impediment to fish passage, flooding, erosion, or adverse effects on stream habitat.</p> <p>f) Ensure that any temporary disturbance to fish passage is limited to the shortest practicable duration and only where necessary to physically undertake the works, and that fish recovery and relocation is undertaken in accordance with the approved Native Fish Recovery Plan. On completion of works, the culvert must be installed in accordance with the approved design to maintain fish passage under normal flow conditions.</p> <p>g) Ensure that <u>all</u> consented structures in the bed or banks of the stream are stabilised and/or armoured to prevent scouring and erosion; <u>and</u></p> <p>h) Ensure that all in-stream works and stream disturbance activities are undertaken under the supervision of persons with appropriate experience in the supervision of in-stream civil engineering construction works; <u>and</u></p> <p>i) Ensure that site remediation any damage to the stream resulting from the works is reinstated to a standard at least equivalent to that prior to works commencing with</p>	<p>Damage to the stream cannot be reinstated because the bed will be permanently altered</p>

Condition Number	Condition	Comment
	reinstatement completed within one month of completion of the works.	
3A	<p>Installation of the culvert must, as far as practicable, be undertaken during dry/low flow periods between 1 January and 31 March (inclusive). Works during 1 September to 30 November may be undertaken only where:</p> <ul style="list-style-type: none"> a) A suitably qualified and experienced person has assessed the proposed works; and b) That assessment demonstrates that the works will avoid the disturbance of Eldon’s galaxias (<i>Galaxias eldoni</i>); and spawning habitat; and c) That assessment has been provided to and accepted by the Consent Authority prior to the commencement of the works. 	
4	<p>The Consent Holder must, provide to the Consent Authority, no later than 20 working days following completion of the installation of the culvert, the following information:</p> <ul style="list-style-type: none"> a) The date on which installation of the culvert was completed; b) A description of the structure, including dimensions, design drawings, and materials used; 	

Condition Number	Condition	Comment
	<ul style="list-style-type: none"> c) Details of the culvert’s physical characteristics and hydraulic performance, including erosion from the outlet drop, water depth and velocity, downstream low-velocity areas, bed substrate, remediation features, wetted margins, slope and alignment, associated structures (such as wingwalls or screens), and the presence and characteristics of any apron or ramp; d) Provision for fish passage in accordance with the WAOCP. 	
5	<p>The Consent Holder must ensure that the culvert is designed and installed so that once completed, the works authorised by this consent do not cause any flooding, erosion, scouring, land instability or property damage.</p>	
7	<p>The Consent Holder must take all reasonable precautions to minimise the spread of pest plants and aquatic weeds. In particular, the Consent Holder must:</p> <ul style="list-style-type: none"> a) Remove any vegetation caught on the machinery; b) Where necessary, clear vegetation from the site before gravel is extracted; c) Avoid working in areas where aquatic weeds are known to be present (for information, contact the Consent Authority); and 	

Condition Number	Condition	Comment
	<p>d) Avoid the spread of the <i>Didymosphenia geminata</i> or any other pest plant, do not use machinery in the berm or bed of the waterbody that has been used in any area where the pest plant(s) are known to be present in the previous 20 working days, unless it has been thoroughly cleansed.</p>	
8	<p>The Consent Holder must notify the Consent Authority in writing no less than 10 working days following the completion of the works and must provide photographs of the area/s where work has been undertaken. Photographs must be in colour and be no smaller than 200 x 150 millimetres in size and be in JPEG form.</p>	
9	<p>The Consent Holder must ensure that all practicable measures are taken to prevent cement and cement products, from entering flowing water.</p>	
Aquatic Offsetting and Compensation Site		
10	<p>The Consent Holder must implement the aquatic offsetting <u>and compensation</u> required by this consent in accordance with the Wetland and Aquatic Offsetting <u>and Compensation</u> Plan.</p>	<p>Rewording to reflect Panel findings regarding offsetting and compensation</p>

Condition Number	Condition	Comment
11	<p>No later than six months after the establishment of the Wetland and Aquatic Offsetting and Compensation Sites [Part Section 5 Block X Lee Stream SD (CT OT14C/331)] and shown on Appendix 2, the Consent Holder shall provide legal protection from stock grazing for the period of the operation of the Wind Farm via a covenant or similar legally binding mechanism. Evidence that this condition has been complied with must be provided to the Consent Authority.</p>	<p>Rewording to reflect Panel findings regarding offsetting and compensation</p>
	<p>Advice Note:</p> <p><i>The certified Wetland Management and Monitoring Plan (WMMP) describes the management and monitoring of wetlands within 100 m of proposed earthworks within the Puke Kapo Hau - Mahinerangi Wind Farm Site and the associated transmission line.</i></p> <p><i>The certified Wetland and Aquatic Offsetting Plan outlines the potential adverse effects on natural inland wetlands and how these will be offset.</i></p>	

CONSENT TYPE: Land Use Consent (RMFT25.008.03)

ACTIVITY AUTHORISED: Construction of “bores” for dewatering

SITE LOCATION: The ‘project site’ of the Puke Kapo Hau - Mahinerangi Wind Farm Stage 2 shown in Appendix 1 of this consent

LEGAL DESCRIPTION OF CONSENT LOCATION: The relevant parts of the project site land shown on Map 3 - Puke Kapo Hau Stage 2 Project Site (Wind Farm) and Map 4.1 - Puke Kapo Hau Stage 2 Project Site (Transmission Line) in Appendix 1

Condition Number	Condition	Comment
Exercise of consents		
1	<p>The activities authorised by this consent must be undertaken in general accordance with the plans and all information submitted with the application, except where otherwise required by this consent including, where relevant, General Conditions G1 – G38 of RMFT25.00.01.</p> <p>In the event of any conflict or discrepancy between General Conditions and the conditions of this consent, the conditions of this consent will be determinative.</p>	

2	The duration of consent shall be 15 years from the commencement of the consent.	
----------	---	--

CONSENT TYPE: Discharge Permit (RMFT25.008.04)

ACTIVITY AUTHORISED: Discharge of water or any contaminant from concrete batching plant to land where it may enter a waterbody

SITE LOCATION: The ‘project site’ of the Puke Kapo Hau - Mahinerangi Wind Farm Stage 2 shown in Appendix 1 of this consent

LEGAL DESCRIPTION OF CONSENT LOCATION: The relevant parts of the project site land shown on Map 3 - Puke Kapo Hau Stage 2 Project Site (Wind Farm) in Appendix 1

Condition Number	Condition	Comment
Exercise of consents		
1	The activities authorised by this consent must be undertaken in general accordance with the plans and all information submitted with the application, except where otherwise required by this consent including, where relevant, General Conditions G1 – G38 of RMFT25.00.01.	

Condition Number	Condition	Comment
	In the event of any conflict or discrepancy between General Conditions and the conditions of this consent, the conditions of this consent will be determinative.	
2	The duration of consent shall be 15 years from the commencement of the consent.	
4	<p>The Consent Holder must ensure that all practicable measures are taken to prevent contaminants from concrete batching activities entering flowing water. Measures include:</p> <ul style="list-style-type: none"> a) A temporary compact impervious surface area placed beneath the loading area used for concrete batching; b) Stabilised earth bunds constructed around the perimeter to divert cleanwater runoff and contain sediment laden runoff; and c) Cement stored within a silo(s) and all aggregate stored within storage bins. 	

CONSENT TYPE: Discharge Permit (RMFT25.008.05)

ACTIVITY AUTHORISED: To discharge water to land in a manner that may enter a waterbody for the purpose of disposing of stormwater from construction sites and fill areas.

SITE LOCATION: The 'project site' of the Puke Kapo Hau - Mahinerangi Wind Farm Stage 2 in Appendix 1 of this consent

LEGAL DESCRIPTION OF CONSENT LOCATION: The relevant parts of the project site land shown on Map 3 - Puke Kapo Hau Stage 2 Project Site (Wind Farm) and Map 4.1 - Puke Kapo Hau Stage 2 Project Site (Transmission Line) in Appendix 1

Condition Number	Condition	Comment
Exercise of consents		
1	The activities authorised by this consent must be undertaken in general accordance with the plans and all information submitted with the application, except where otherwise	

Condition Number	Condition	Comment
	<p>required by this consent including, where relevant, General Conditions G1 – G38 of RMFT25.00.01.</p> <p>In the event of any conflict or discrepancy between General Conditions and the conditions of this consent, the conditions of this consent will be determinative.</p>	
2	The duration of consent shall be 15 years from the commencement of the consent.	
3	The discharge authorised by this consent does not include the discharge to land of runoff from fire suppression activities.	

CONSENT TYPE: Discharge Permit (RMFT25.008.06)

ACTIVITY AUTHORISED: To discharge water and sediment to land in a manner that may enter a waterbody for the purpose of disposing of stormwater from construction sites and fill areas.

SITE LOCATION: The 'project site' of the Puke Kapo Hau - Mahinerangi Wind Farm Stage 2 shown in Appendix 1 of this consent

LEGAL DESCRIPTION OF CONSENT LOCATION: The relevant parts of the project site land shown on Map 3 - Puke Kapo Hau Stage 2 Project Site (Wind Farm) and Map 4.1 - Puke Kapo Hau Stage 2 Project Site (Transmission Line) in Appendix 1

Condition Number	Condition	Comment
1	The activities authorised by this consent must be undertaken in general accordance with the plans and all information submitted with the application, except where	

Condition Number	Condition	Comment
	<p>otherwise required by this consent including, where relevant, General Conditions G1 – G38 of RMFT25.00.01.</p> <p>In the event of any conflict or discrepancy between General Conditions and the conditions of this consent, the conditions of this consent will be determinative.</p>	
2	The duration of consent shall be 15 years from the commencement of the consent.	

CONSENT TYPE: Discharge Permit (RMFT25.008.07)

ACTIVITY AUTHORISED: To discharge water to land in a manner that may enter a waterbody for the purpose of dewatering construction sites

SITE LOCATION: The 'project site' of the Puke Kapo Hau - Mahinerangi Wind Farm Stage 2 shown in Appendix 1 of this consent

LEGAL DESCRIPTION OF CONSENT LOCATION: The relevant parts of the project site land shown on Map 3 - Puke Kapo Hau Stage 2 Project Site (Wind Farm) and Map 4.1 - Puke Kapo Hau Stage 2 Project Site (Transmission Line) in Appendix 1

Condition Number	Condition	Comment
Exercise of consents		
1	The activities authorised by this consent must be undertaken in general accordance with the plans and all information submitted with the application, except where otherwise	

Condition Number	Condition	Comment
	<p>required by this consent including, where relevant, General Conditions G1 – G38 of RMFT25.00.01.</p> <p>In the event of any conflict or discrepancy between General Conditions and the conditions of this consent, the conditions of this consent will be determinative.</p>	
2	The duration of consent shall be 15 years from the commencement of the consent.	
3	The consent holder must ensure any groundwater taken for the purpose of site dewatering does not result in any erosion or discharge of sediment to the receiving waterbody, or waterbodies, by the use of approved erosion and sediment control methods as outline in Erosion and Sediment Control Guide for Land Disturbing Activities in the Auckland Region - GD05.	

CONSENT TYPE:	Discharge Permit (<u>RMFT25.008.08</u>)
ACTIVITY AUTHORISED:	To discharge sediment to water for the purpose of installing a culvert within a waterbody
SITE LOCATION:	Lee Stream Tributary crossing at coordinate 45°44'5.00"S, 169°54'53.71"E within the 'project site' of the Puke Kapo Hau - Mahinerangi Wind Farm Stage shown in Appendix 1 of this consent
LEGAL DESCRIPTION OF CONSENT LOCATION:	The relevant parts of the land shown in Appendix 1 The relevant parts of the project site land shown on Map 3 - Puke Kapo Hau Stage 2 Project Site (Wind Farm) in Appendix 1

Condition Number	Condition	Comment
Exercise of consents		
1	<p>The activities authorised by this consent must be undertaken in general accordance with the plans and all information submitted with the application, except where otherwise required by this consent including, where relevant, General Conditions G1 – G38 of RMFT25.00.01.</p> <p>In the event of any conflict or discrepancy between General Conditions and the conditions of this consent, the conditions of this consent will be determinative.</p>	
2	<p>The duration of consent shall be 15 years from the commencement of the consent.</p>	
3	<p>The Consent Holder must take all practicable steps to minimise the release of sediment into the water while disturbing the bed of a waterbody.</p>	
Lee Stream Tributary Water Quality Monitoring		

Condition Number	Condition	Comment
6	In order to confirm compliance with conditions 2-4 above, the Consent Holder must undertake water quality monitoring in the Lee Stream in accordance with the Water Quality Monitoring Plan (WQMP).	
7	The objective of the WQMP is to outline requirements of a water quality monitoring programme to demonstrate the effectiveness of site-specific erosion, stormwater and sediment control measures during culvert installation in the Lee Stream Tributary.	
8	<p>For the duration of the culvert construction works only, the Consent Holder must implement a water quality monitoring programme in accordance with the WQMP, which must include:</p> <ul style="list-style-type: none"> a) Pre culvert construction works actions including: <ul style="list-style-type: none"> i. Conducting baseline water quality monitoring that measures turbidity upstream and downstream within 7 days before works begin. ii. A site assessment undertaken by the Project Ecologist. This will assess stream conditions to confirm which monitoring methods are suitable for example, turbidity only, or turbidity and sediment cover. 	

Condition Number	Condition	Comment
	<ul style="list-style-type: none"> iii. Ensuring staff are trained in turbidity meter use and calibration; SAM2 visual sediment assessment methods and monitoring site locations. b) Actions during culvert construction works including: <ul style="list-style-type: none"> i. Measuring turbidity up to 3 times daily at upstream and downstream sites (if flowing water exists). ii. Sediment Cover Monitoring (if habitat exists). iii. Conduct SAM2 visual assessments at least every 3 days, or every 2 days if turbidity differences arise. iv. Photographs at each sampling event to document conditions. v. Recording rainfall and stream conditions. vi. Responding to rainfall events. vii. Required actions and incident responses where there is a $\geq 30\%$ increase in turbidity downstream compared to upstream or $\geq 10\%$ increase in deposited sediment cover. c) Post-culvert construction monitoring and final reporting. 	
9	A monitoring report must be prepared and provided to the Consent Authority within 20 working days after the completion of the Lee Stream culvert installation and water quality	

Condition Number	Condition	Comment
	<p>monitoring programme. The report must, at a minimum, detail the following:</p> <ul style="list-style-type: none">a) Methodologies used to monitor water quality;b) A summary of outcomes of the monitoring; andc) Any amendments to the sediment control mechanisms that were initiated as a result of monitoring data.	

CONSENT TYPE: Discharge Permit (RMFT25.008.09)

ACTIVITY AUTHORISED: Operational discharges of stormwater from new infrastructure and associated impervious surface areas (excluding roading) to land where it may enter waterbodies

SITE LOCATION: The 'project site' of the Puke Kapo Hau - Mahinerangi Wind Farm Stage 2 shown in Appendix 1 of this consent

LEGAL DESCRIPTION OF CONSENT LOCATION: The relevant parts of the project site land shown on Map 3 - Puke Kapo Hau Stage 2 Project Site (Wind Farm) and Map 4.1 - Puke Kapo Hau Stage 2 Project Site (Transmission Line) in Appendix 1

Condition Number	Condition	Comment
Exercise of consents		
1	The activities authorised by this consent must be undertaken in general accordance with the plans and all information submitted	

Condition Number	Condition	Comment
	<p>with the application, except where otherwise required by this consent including, where relevant, General Conditions G1 – G38 of RMFT25.00.01.</p> <p>In the event of any conflict or discrepancy between General Conditions and the conditions of this consent, the conditions of this consent will be determinative.</p>	
2	The discharge does not cause flooding of any other person's property, erosion, land instability, sedimentation or property damage.	
3	The duration of consent shall be 35 years from the commencement of the consent.	

CONSENT TYPE: **Water Permit (RMFT25.008.10)**

ACTIVITY AUTHORISED: **To take groundwater for the purpose of dewatering construction sites**

SITE LOCATION: **The ‘project site’ of the Puke Kapo Hau - Mahinerangi Wind Farm Stage 2 shown in Appendix 1 of this consent**

LEGAL DESCRIPTION OF CONSENT LOCATION: **The relevant parts of the project site land shown on Map 3 - Puke Kapo Hau Stage 2 Project Site (Wind Farm) and Map 4.1 - Puke Kapo Hau Stage 2 Project Site (Transmission Line) in Appendix 1**

Condition Number	Condition	Comment
Exercise of consents		
1	The activities authorised by this consent must be undertaken in general accordance with the plans and all information submitted with the application, except where otherwise required by this consent including, where relevant, General Conditions G1 – G38 of RMFT25.00.01.	

Condition Number	Condition	Comment
	In the event of any conflict or discrepancy between General Conditions and the conditions of this consent, the conditions of this consent will be determinative.	
1A	The duration of consent shall be 6 years from the commencement of construction works.	
2	The dewatering of the excavations must not give rise to any land instability, subsidence or property damage.	
4	If an event occurs on-site that may lead to contamination of groundwater, the consent holder must notify the Consent Authority of the event as soon as reasonably practicable after the event occurs.	
5	The consent holder must ensure any groundwater taken for the purpose of site dewatering is returned to the same waterbody, or waterbodies, from which it is taken in a manner that ensures the amount taken is the same as the amount returned, and is returned as soon as practicable and within the same operational dewatering period.	

CONSENT TYPE:	Water Permit (<u>RMFT25.008.11</u>)
ACTIVITY AUTHORISED:	To temporarily divert Lee Stream Tributary whilst erecting a culvert.
SITE LOCATION:	Lee Stream Tributary crossing at coordinate 45°44'5.00"S, 169°54'53.71"E within the 'project site' of the Puke Kapo Hau - Mahinerangi Wind Farm Stage 2 shown in Appendix 1 of this consent
LEGAL DESCRIPTION OF CONSENT LOCATION:	The relevant parts of the project site land shown on Map 3 - Puke Kapo Hau Stage 2 Project Site (Wind Farm) in Appendix 1

Condition Number	Condition	Comment
Exercise of consents		
1	<p>The activities authorised by this consent must be undertaken in general accordance with the plans and all information submitted with the application, except where otherwise required by this consent including, where relevant, General Conditions G1 – G38 of RMFT25.00.01.</p> <p>In the event of any conflict or discrepancy between General Conditions and the conditions of this consent, the conditions of this consent will be determinative.</p>	
1A	The duration of consent shall be 6 years from the commencement of construction works.	The diversion will effectively be permanent

Condition Number	Condition	Comment
2	The consent must be exercised in conjunction with RMFT25.008.02 (To install culvert structures within the bed of waterbody and the associated disturbance of the bed a waterbody), Discharge Permit_RMFT25.008.06 (To discharge water and sediment to land in a manner that may enter water for the purpose of disposing of stormwater from construction sites and fill areas) and Water Permit RMFT25.008.08 (To discharge sediment to water for the purpose of installing culvert structures).	
3	The diversion of water from the waterbody must only occur once the diversion channel has been established.	
4	<p>Temporary Diversion of the Lee Stream Tributary must, as far as practicable, be undertaken during dry/low flow periods between 1 January and 31 March (inclusive). Works may be undertaken during 1 September to 30 November only where:</p> <p>a) A suitably qualified and experienced person has assessed the proposed works; and</p>	There will be temporary diversions during works and a permanent diversion of the stream from its natural bed

Condition Number	Condition	Comment
	<p>b) That assessment demonstrates that the works will avoid the disturbance of Eldon's galaxias (<i>Galaxias eldoni</i>) and spawning habitat; and</p> <p>c) That assessment has been provided to and approved by the Consent Authority prior to the commencement of the works.</p>	
4A	<p>Immediately prior to the diversion works, impermeable bunds must be installed to isolate and enclose the works reach to be dewatered, for the purpose of preventing fish passage. A suitably qualified project ecologist must be onsite during dewatering to capture and remove any fish remaining within the isolated works reach.</p>	
5	<p>To the extent practicable, screened pump intake pipes should be positioned mid-channel.</p>	
6	<p>When diverting water into any new diversion channel and/or pipe, all reasonable steps must be taken to ensure that sediment and discolouration of water are kept to a minimum.</p>	

Condition Number	Condition	Comment
8	No reduction in the surface flow of the waterbody will result from the diversion authorised by this consent.	
9	No lawful take of water shall be adversely affected as a result of the diversion authorised by this consent.	
10	The Consent Holder must ensure the diversion does not cause any flooding, erosion, scouring, land instability or damage of any other person's property. Should such effects occur due to the diversion, the Consent Holder must, if so required by the Consent Authority and at no cost to the Consent Authority, take all such actions as the Consent Authority may request to remedy any such damage.	
Native Fish Recovery Plan		
11	The Consent Holder must ensure that as part of the construction of the culvert within the Lee Stream Tributary the fish salvage and fish relocation will be generally carried out in accordance with the methodologies set out in the Native Fish Recovery Plan (NFRP).	

Condition Number	Condition	Comment
12	The objective of the NFRP is to minimise actual or potential adverse effects on native freshwater fish present within the stream reach that will be impacted by the <u>works to install the culvert works</u> and demonstrate how the conditions of consent will be met.	Clarification.
13	<p>The recovery and relocation methods within the NFRP must include details of:</p> <ul style="list-style-type: none"> a) Fish salvage work, including delineating the upstream and down stream extent, fish barriers, fish trapping, dewatering and removal of surface stream sediments; b) Fish relocation; c) Biosecurity; and d) Reporting (in accordance with Condition 15 below). 	
13A	<p>To ensure the successful salvage of fish, as a minimum:</p> <ul style="list-style-type: none"> a) Fish must be held for the minimum time possible, and holding containers must be kept in a shaded location. b) The density of the fish within the holding container must be monitored and kept to an appropriate level (e.g., less than 	

Condition Number	Condition	Comment
	<p>15 fish per container) to ensure that low dissolved oxygen within the container does not lead to mortality. Portable, battery powered aerators must be available for use in the holding containers, if required.</p> <p>c) Fish must be handled as little as possible and shall not be handled with dry hands.</p>	
13B	All nets, traps and other equipment used during the fish relocation exercise will be clean and dry at the outset of works to avoid the potential spread of unwanted organisms and diseases.	
14	The Consent Authority will be advised by the Consent Holder if any changes to the NFRP are required, prior to instream works commencing.	
15	<p>A report will be prepared and provided to the Consent Authority at the completion of the fish recovery and relocation exercise. The report will, at a minimum, detail the following:</p> <p>a) Methodologies used to recover fish from the works reach;</p>	

Condition Number	Condition	Comment
	<ul style="list-style-type: none"> b) Outcomes of the fish relocation exercise (fish species, numbers and size ranges); and c) Location of final fish release sites. 	
	<p>Advice Note:</p> <p><i>Fish records will be sent for inclusion in the New Zealand Freshwater Fish Database (NZFFD).</i></p>	

National Environmental Standards - Freshwater

CONSENT TYPE:	NES-F Consent (<u>RMFT25.008.12</u>)
ACTIVITY AUTHORISED:	To construct specified infrastructure (including earthworks, land disturbance, vegetation removal and stormwater discharge) in or within 10m of natural inland wetlands
SITE LOCATION:	The ‘project site’ of the Puke Kapo Hau - Mahinerangi Wind Farm shown in Appendix 1 of this consent
LEGAL DESCRIPTION OF CONSENT LOCATION:	The relevant parts of the project site land shown on Map 3 - Puke Kapo Hau Stage 2 Project Site (Wind Farm) and Map 4.1 - Puke Kapo Hau Stage 2 Project Site (Transmission Line) in Appendix 1

Condition Number	Condition	Comment
Exercise of consents		
1	The activities authorised by this consent must be undertaken in general accordance with the plans and all information submitted with the application, except where otherwise required by this consent including, where relevant, General Conditions G1 – G38 of RMFT25.00.01.	

Condition Number	Condition	Comment
	In the event of any conflict or discrepancy between General Conditions and the conditions of this consent, the conditions of this consent will be determinative.	
1A	The duration of consent shall be 35 years from the commencement of the consent.	
2	Except where the works authorised by this consent are located within natural inland wetlands, the hydrological regime of the natural wetlands which are located within 100m metres of any works must not be modified by the activities authorised by this consent.	Minor correction.
3	<p>To confirm compliance with Condition 2, the Consent Holder must:</p> <ul style="list-style-type: none"> a) maintain a photographic record of all photo points of natural wetlands identified in the certified Wetland Management and Monitoring Plan (WMMP) prior to the commencement of activities under this consent, and on a three-monthly basis thereafter for the duration of the construction works; and b) provide photographs taken at each photo point identified in the certified WMMP and a written 	

Condition Number	Condition	Comment
	assessment of compliance with condition 2 to the Consent Authority three months after the completion of construction activities authorised under this consent.	
Wetland and aquatic offsetting and compensation		
4	The wetland and aquatic offsetting required by this consent shall be implemented in accordance with the Wetland and Aquatic Offsetting and Compensation Plan (SLR, 2025).	This should be the WAOP prepared and certified under the general conditions, rather than that prepared by SLR and submitted with the application.
5	No later than six months after the establishment of the Wetland and Aquatic Offsetting and Compensation Site [Part Section 5 Block X Lee Stream SD (CT OT14C/331)] and shown on Appendix 2, the Consent Holder shall provide legal protection from stock grazing for the period of the operation of the Wind Farm via a covenant or similar legally binding mechanism. Evidence that this condition has been complied with must be provided to the Consent Authority.	Rewording to reflect Panel findings regarding offsetting and compensation

Condition Number	Condition	Comment
	<p>Advice Note:</p> <p><i>The certified Wetland Management and Monitoring Plan (WMMP) describes the management and monitoring of wetlands within 100 m of proposed earthworks within the Puke Kapo Hau - Mahinerangi Wind Farm Site and the associated transmission line. The certified Wetland and Aquatic Offsetting Plan (WAOP) outlines the potential adverse effects on natural inland wetlands and how these will be <u>offset</u>.</i></p>	