



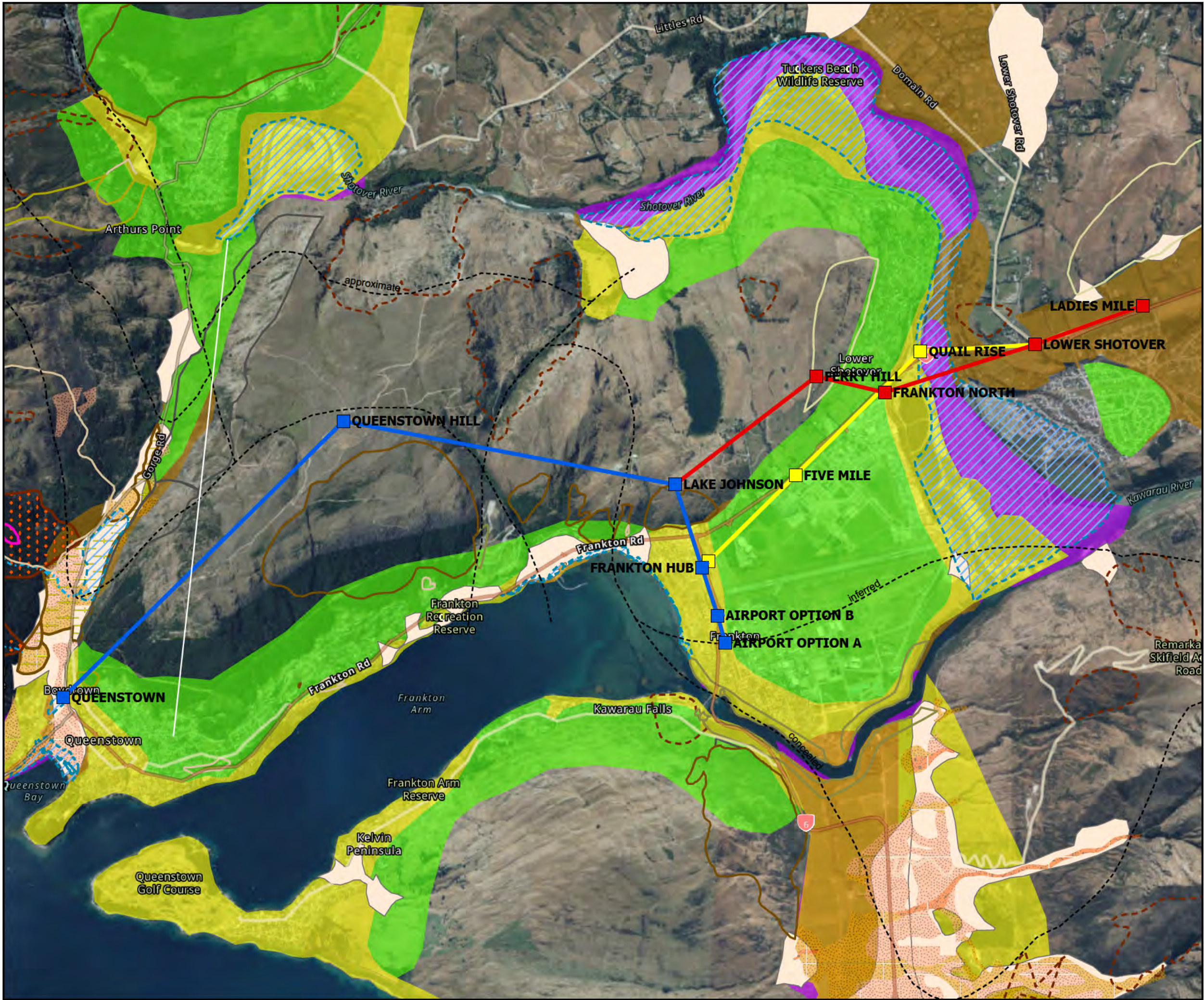
**TOWNPLANNING**  
GROUP

## **[7] NATURAL HAZARDS & HAIL PLAN SET**

### **QUEENSTOWN CABLE CAR**







LEGEND

- Airport to Town Centre Stations
- Airport to Town Centre Line
- Frankton North to Ladies Mile Stations
- Frankton North to Ladies Mile Line
- Frankton Flats to Ladies Mile Stations
- Frankton Flats to Ladies Mile Line
- Pedestrian Overpass
- Seismic Hazards - Faults
  - Inactive Fault - Location approximate
  - Inactive Fault - Location approximate
  - Inactive Fault - Location approximate
  - Flooding - rainfall
- Landslide Areas
  - Active Pre-existing Schist Debris Landslides
  - Pre-existing Schist Debris Landslides (Activity Unknown)
  - Dormant Pre-existing Schist Debris Landslides
  - Shallow Slips and Debris Flows in Colluvium
  - Slope Failure Hazard in Superficial Deposits
  - Rockfall
  - Landslide Areas - non verified/outside priority areas
  - Erosion Areas
  - Alluvial Fan High Hazard Investigations - Channels
  - Alluvial Fan High Hazard Investigations - Source Area
  - Alluvial Fan High Hazard Investigations - Catchment Areas
  - Alluvial Fan High Hazard Investigations - Hazard Area
- Alluvial Fan - ORC
  - fna - fan active bed
  - fira - fan recently active
  - fla - fan less recently active
- Alluvial Fans Regional scale
  - active
- Liquefaction Risk
  - LIC 1 - Nil to Low (T&T 2012)
  - LIC 1 (P) - Probably Low (T&T 2012)
  - LIC 2 (P) - Possibly Moderate (T&T 2012)
  - LIC 3 (P) - Possibly High (T&T 2012)
  - Possibly Susceptible (Opus 2002) Location approximates
  - Susceptible (Opus 2002) Location approximate

HAZARDS OVERVIEW

Queenstown Cable Car

Southern Infrastructure (Cable Car) Ltd

Source: LINZ, Otago Natural Hazards Portal

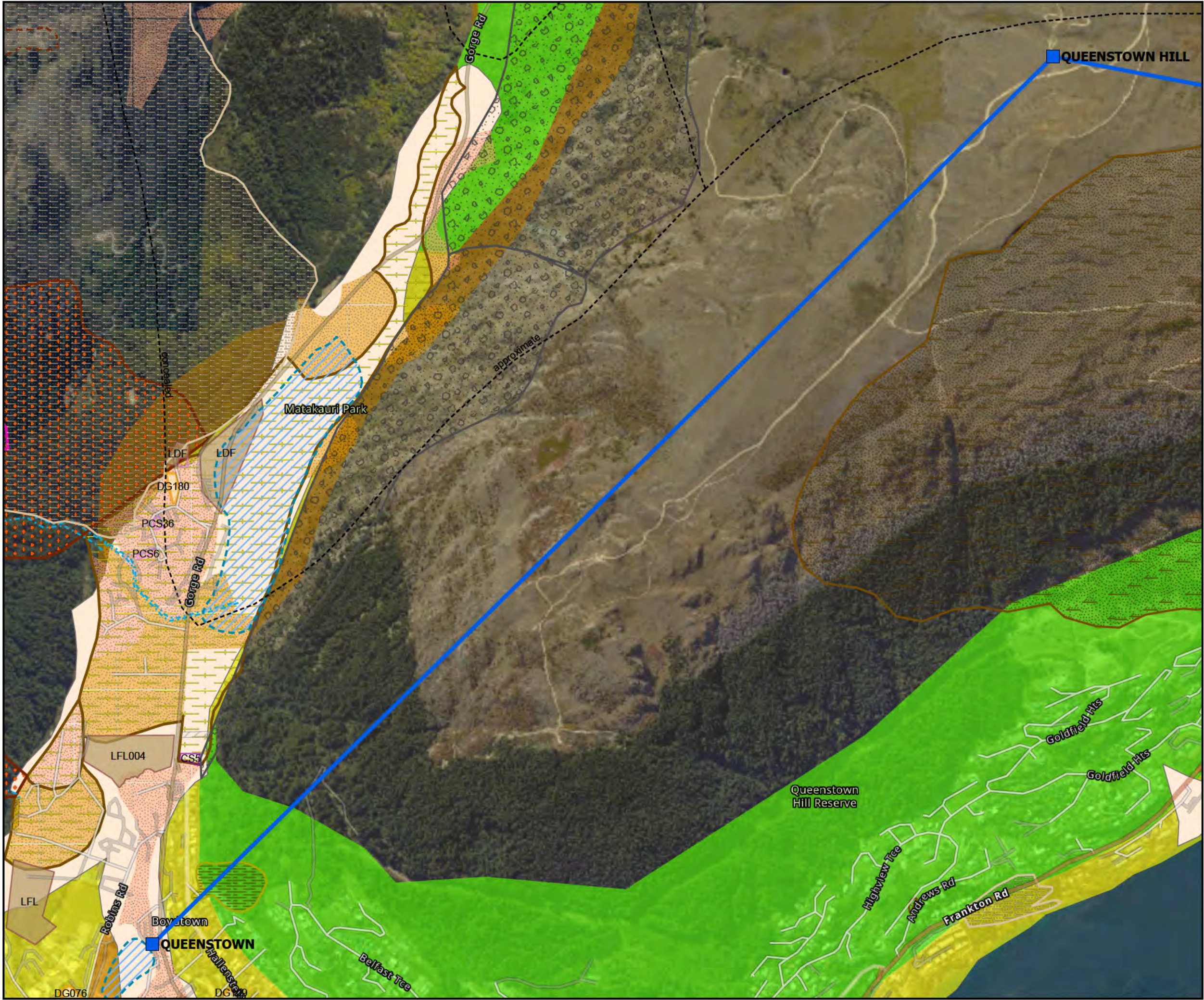
Date: 31/10/2025  
Scale: 1:45,000 @ A3  
Project: 3370-25

N

Revision: 1







LEGEND

- Airport to Town Centre Line
- Airport to Town Centre Stations
- Frankton North to Ladies Mile Line
- Frankton North to Ladies Mile Stations
- Frankton Flats to Ladies Mile Line
- Frankton Flats to Ladies Mile Stations
- Pedestrian Overpass
- Seismic Hazards - Faults**
  - - - Inactive Fault - Location approximate
  - - - Inactive Fault - Location approximate
  - Flooding - rainfall
  - Active Pre-existing Schist Debris Landslides
  - Pre-existing Schist Debris Landslides (Activity Unknown)
  - Dormant Pre-existing Schist Debris Landslides
  - Rockfall
  - Contaminated Sites
  - Potentially Contaminated Sites
  - Managed or Remediated
  - Dangerous Goods Licence
  - Landfill
  - Landslide Areas - non verified/outside priority areas
  - Alluvial Fan High Hazard Investigations - Channels
  - Alluvial Fan High Hazard Investigations - Source Area
  - Alluvial Fan High Hazard Investigations - Catchment Areas
  - Alluvial Fan High Hazard Investigations - Hazard Area
- Alluvial Fan - ORC**
  - fra - fan recently active
  - fla - fan less recently active
- Alluvial Fans Regional scale**
  - active
- Liquefaction Risk**
  - LIC 1 - Nil to Low (T&T 2012)
  - LIC 1 (P) - Probably Low (T&T 2012)
  - LIC 2 (P) - Possibly Moderate (T&T 2012)
  - Possibly Susceptible (Opus 2002) Location approximates

HAZARDS

Queenstown Cable Car

Southern Infrastructure (Cable Car) Ltd

Source: LINZ, Southern Infrastructure Limited, QLDC Hazards Database

Date: 31/10/2025	N ▲	Revision:
Scale: 1:14,000 @ A3		4
Project: 3370-25		







LEGEND

- Airport to Town Centre Line
- Airport to Town Centre Stations
- Frankton North to Ladies Mile Line
- Frankton North to Ladies Mile Stations
- Frankton Flats to Ladies Mile Line
- Frankton Flats to Ladies Mile Stations
- Pedestrian Overpass
- Seismic Hazards - Faults
  - Inactive Fault - Location approximate
  - Inactive Fault - Location approximate
- Flooding - rainfall
- Active Pre-existing Schist Debris Landslides
- Pre-existing Schist Debris Landslides (Activity Unknown)
- Slope Failure Hazard in Superficial Deposits
- Potentially Contaminated Sites
- Dangerous Goods Licence
- Landslide Areas - non verified/outside priority areas
- Alluvial Fans Regional scale
  - active
- Liquefaction Risk
  - LIC 1 - Nil to Low (T&T 2012)
  - LIC 1 (P) - Probably Low (T&T 2012)
  - LIC 2 (P) - Possibly Moderate (T&T 2012)

HAZARDS

Queenstown Cable Car

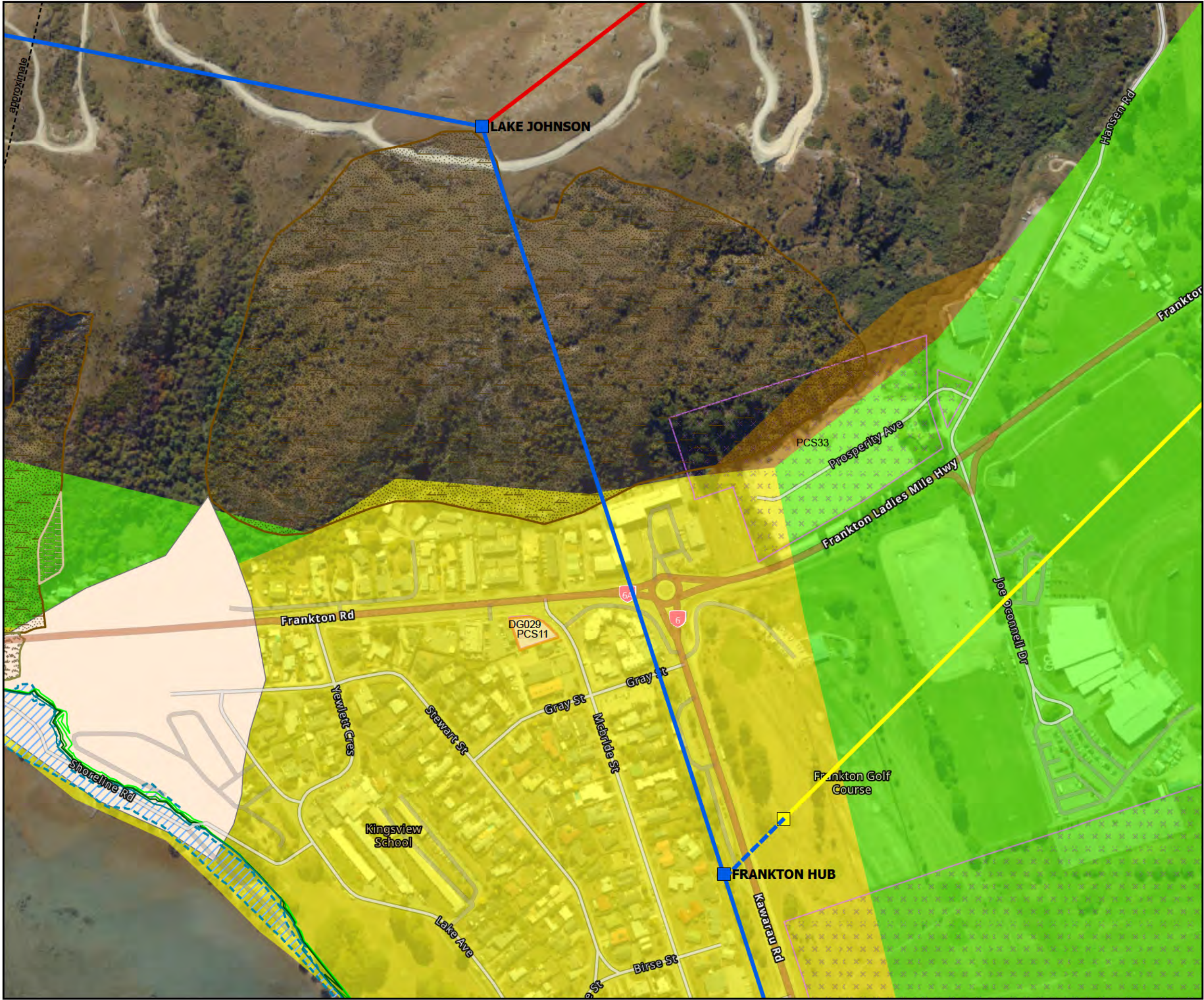
Southern Infrastructure (Cable Car) Ltd

Source: LINZ, Southern Infrastructure Limited, QLDC Hazards Database

Date: 31/10/2025	N ▲	Revision:
Scale: 1:14,000 @ A3		4
Project: 3370-25		







LEGEND

- Airport to Town Centre Line
- Airport to Town Centre Stations
- Frankton North to Ladies Mile Line
- Frankton North to Ladies Mile Stations
- Frankton Flats to Ladies Mile Line
- Frankton Flats to Ladies Mile Stations
- Pedestrian Overpass
- Return period
  - 150 Year
  - 100 Year
  - 75 Year
  - 50 Year
- Seismic Hazards - Faults
  - Inactive Fault - Location approximate
  - Flooding - rainfall
  - Active Pre-existing Schist Debris Landslides
  - Pre-existing Schist Debris Landslides (Activity Unknown)
  - Slope Failure Hazard in Superficial Deposits
  - Potentially Contaminated Sites
  - Dangerous Goods Licence
- Alluvial Fans Regional scale
  - active
- Liquefaction Risk
  - LIC 1 - Nil to Low (T&T 2012)
  - LIC 1 (P) - Probably Low (T&T 2012)
  - Possibly Susceptible (Opus 2002) Location approximates

HAZARDS

Queenstown Cable Car

Southern Infrastructure (Cable Car) Ltd

Source: LINZ, Southern Infrastructure Limited, QLDC Hazards Database

Date: 31/10/2025	N	Revision:
Scale: 1:5,000 @ A3	▲	4
Project: 3370-25		







## LEGEND

- Airport to Town Centre Line
- Airport to Town Centre Stations
- Frankton North to Ladies Mile Line
- Frankton North to Ladies Mile Stations
- Frankton Flats to Ladies Mile Line
- Frankton Flats to Ladies Mile Stations
- Pedestrian Overpass
- Return period**
  - 150 Year
  - 100 Year
  - 75 Year
  - 50 Year
- Seismic Hazards - Faults**
  - Inactive Fault - Location approximate
  - Flooding - rainfall
  - Potentially Contaminated Sites
  - Managed or Remediated
  - Dangerous Goods Licence
- Liquefaction Risk**
  - LIC 1 - Nil to Low (T&T 2012)
  - LIC 1 (P) - Probably Low (T&T 2012)
  - Possibly Susceptible (Opus 2002) Location approximates

## HAZARDS

### Queenstown Cable Car

Southern Infrastructure (Cable Car) Ltd

Source: LINZ, Southern Infrastructure Limited, QLDC Hazards Database

Date: 31/10/2025  
Scale: 1:4,000 @ A3  
Project: 3370-25

N

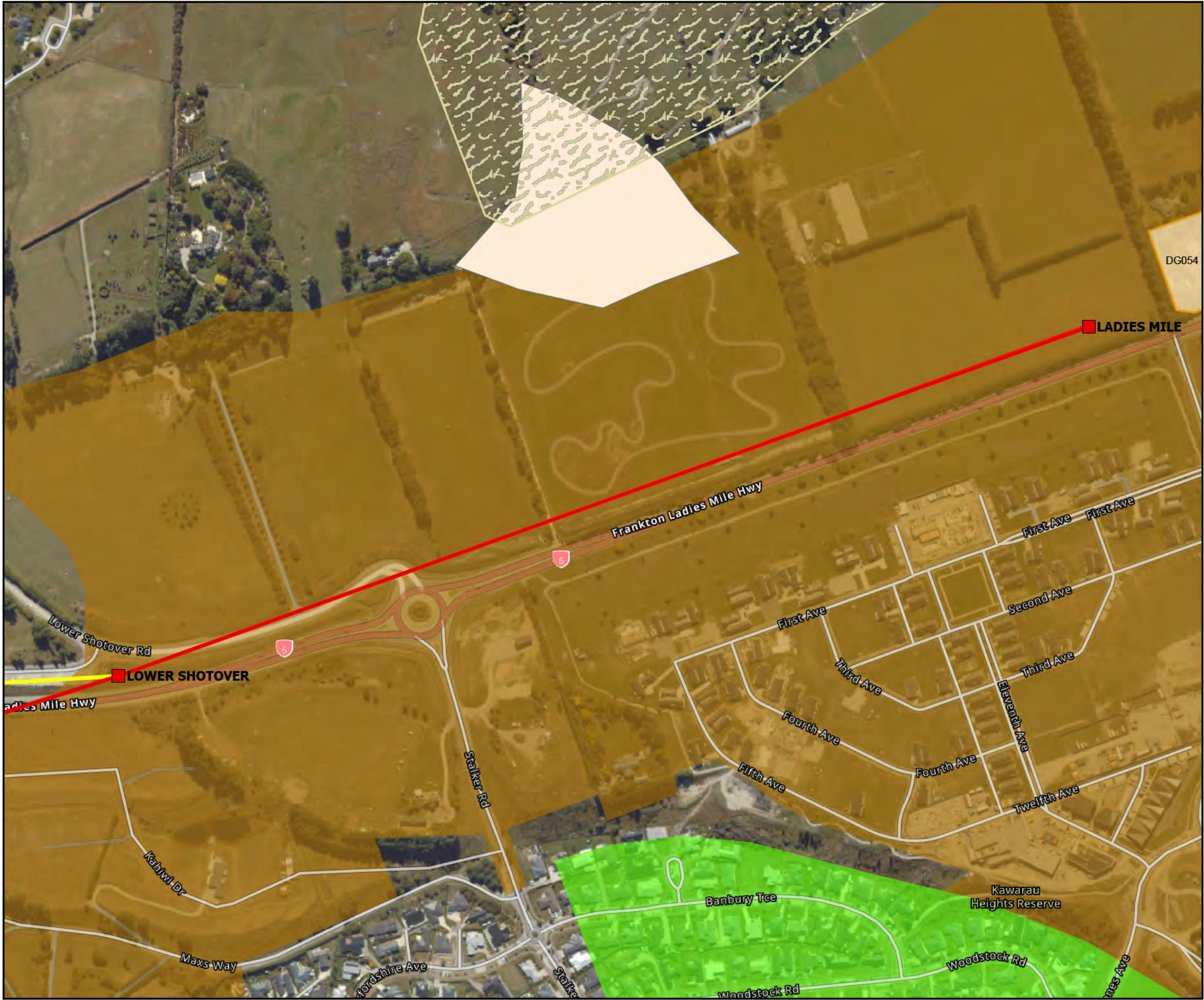


Revision:

4







**LEGEND**

- Airport to Town Centre Line
- Airport to Town Centre Stations
- Frankton North to Ladies Mile Line
- Frankton North to Ladies Mile Stations
- Frankton Flats to Ladies Mile Line
- Frankton Flats to Ladies Mile Stations
- Pedestrian Overpass
- Shallow Slips and Debris Flows in Colluvium
- Dangerous Goods Licence
- Alluvial Fans Regional scale
- active
- Liquefaction Risk
- LIC 1 - Nil to Low (T&T 2012)
- Possibly Susceptible (Opus 2002) Location approximates

**HAZARDS**

**Queenstown Cable Car**

Southern Infrastructure (Cable Car) Ltd

Source: LINZ, Southern Infrastructure Limited, QLDC Hazards Database

Date: 31/10/2025	N ▲	Revision:
Scale: 1:5,000 @ A3		4
Project: 3370-25		







**LEGEND**

- Airport to Town Centre Line
- Airport to Town Centre Stations
- Frankton North to Ladies Mile Line
- Frankton North to Ladies Mile Stations
- Frankton Flats to Ladies Mile Line
- Frankton Flats to Ladies Mile Stations
- Pedestrian Overpass
- Active Pre-existing Schist Debris Landslides
- Potentially Contaminated Sites
- Liquefaction Risk**
- LIC 1 - Nil to Low (T&T 2012)
- LIC 1 (P) - Probably Low (T&T 2012)
- Possibly Susceptible (Opus 2002) Location approximates

**HAZARDS**

**Queenstown Cable Car**

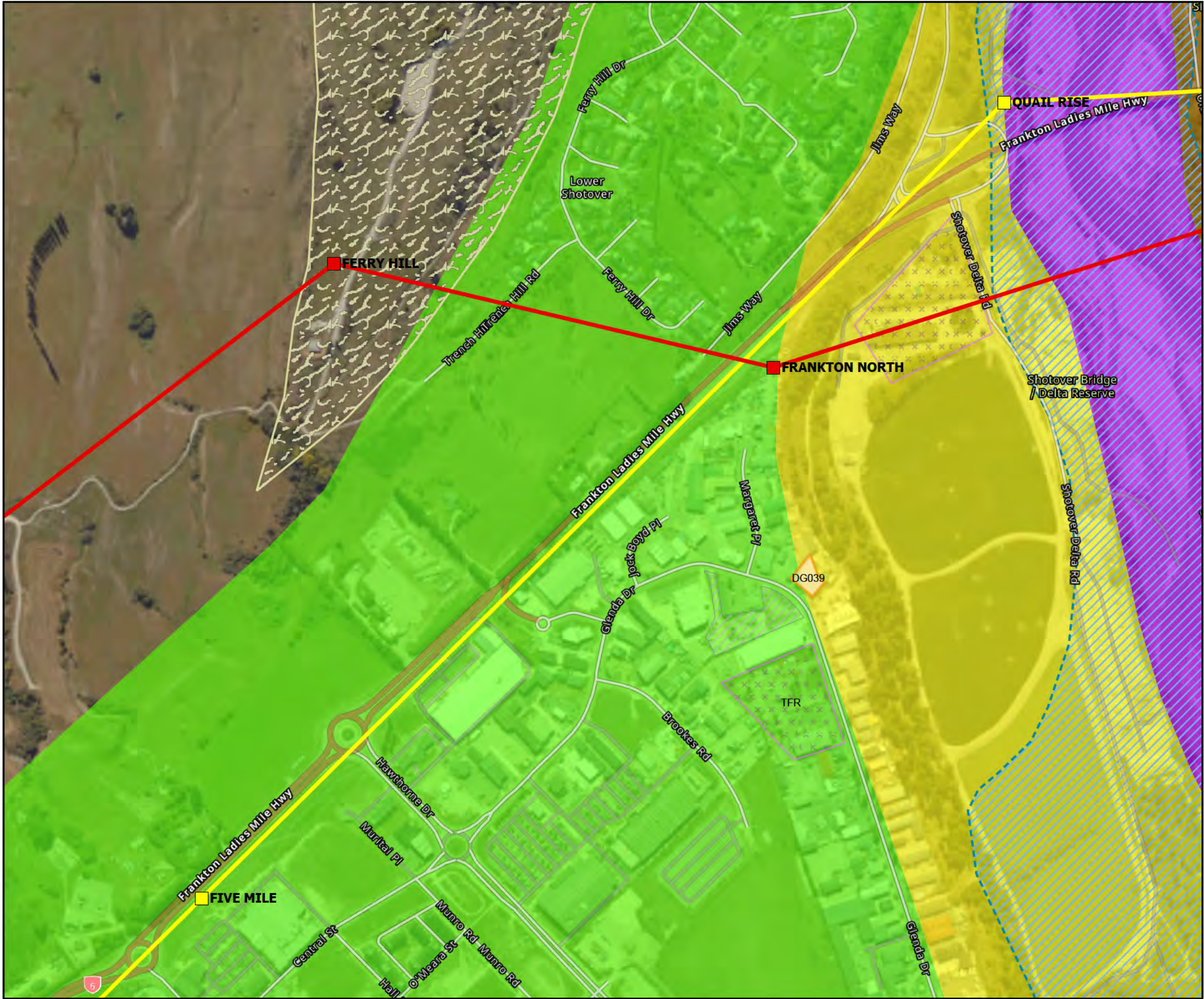
**Southern Infrastructure (Cable Car) Ltd**

Source: LINZ, Southern Infrastructure Limited, QLDC Hazards Database

Date: 31/10/2025	N	Revision:
Scale: 1:5,000 @ A3	▲	4
Project: 3370-25		







LEGEND

- Airport to Town Centre Line
- Airport to Town Centre Stations
- Frankton North to Ladies Mile Line
- Frankton North to Ladies Mile Stations
- Frankton Flats to Ladies Mile Line
- Frankton Flats to Ladies Mile Stations
- Pedestrian Overpass
- Flooding - rainfall
- Shallow Slips and Debris Flows in Colluvium
- Potentially Contaminated Sites
- Potentially Contaminated Sites
- Managed or Remediated
- Dangerous Goods Licence
- Liquefaction Risk**
  - LIC 1 - Nil to Low (T&T 2012)
  - LIC 1 (P) - Probably Low (T&T 2012)
  - Possibly Susceptible (Opus 2002) Location approximates
  - Susceptible (Opus 2002) Location approximate

HAZARDS

Queenstown Cable Car

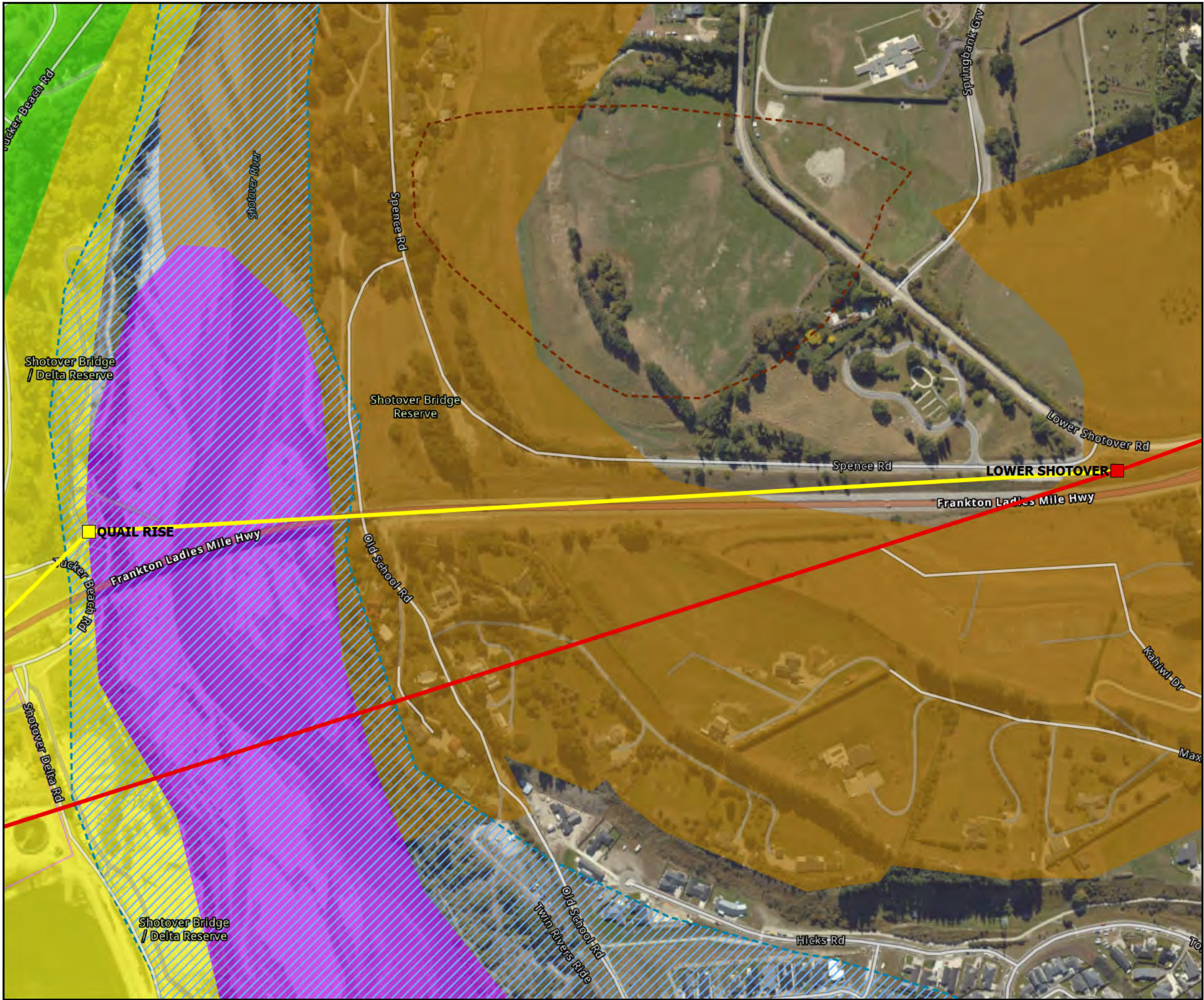
Southern Infrastructure (Cable Car) Ltd

Source: LINZ, Southern Infrastructure Limited, QLDC Hazards Database

Date: 31/10/2025	N ▲	Revision:
Scale: 1:7,000 @ A3		4
Project: 3370-25		







**LEGEND**

- Airport to Town Centre Line
- Airport to Town Centre Stations
- Frankton North to Ladies Mile Line
- Frankton North to Ladies Mile Stations
- Frankton Flats to Ladies Mile Line
- Frankton Flats to Ladies Mile Stations
- Pedestrian Overpass
- Flooding - rainfall
- Potentially Contaminated Sites
- Landslide Areas - non verified/outside priority areas
- Liquefaction Risk**
- LIC 1 - Nil to Low (T&T 2012)
- LIC 1 (P) - Probably Low (T&T 2012)
- Possibly Susceptible (Opus 2002) Location approximates
- Susceptible (Opus 2002) Location approximate

**HAZARDS**

**Queenstown Cable Car**

**Southern Infrastructure (Cable Car) Ltd**

Source: LINZ, Southern Infrastructure Limited, QLDC Hazards Database

Date: 31/10/2025	N	Revision:
Scale: 1:5,000 @ A3	▲	4
Project: 3370-25		







**LEGEND**

- Airport to Town Centre Line
- Airport to Town Centre Stations
- Frankton North to Ladies Mile Line
- Frankton North to Ladies Mile Stations
- Frankton Flats to Ladies Mile Line
- Frankton Flats to Ladies Mile Stations
- Pedestrian Overpass
- Active Pre-existing Schist Debris Landslides
- Shallow Slips and Debris Flows in Colluvium
- Liquefaction Risk**
- LIC 1 - Nil to Low (T&T 2012)

**HAZARDS**

**Queenstown Cable Car**

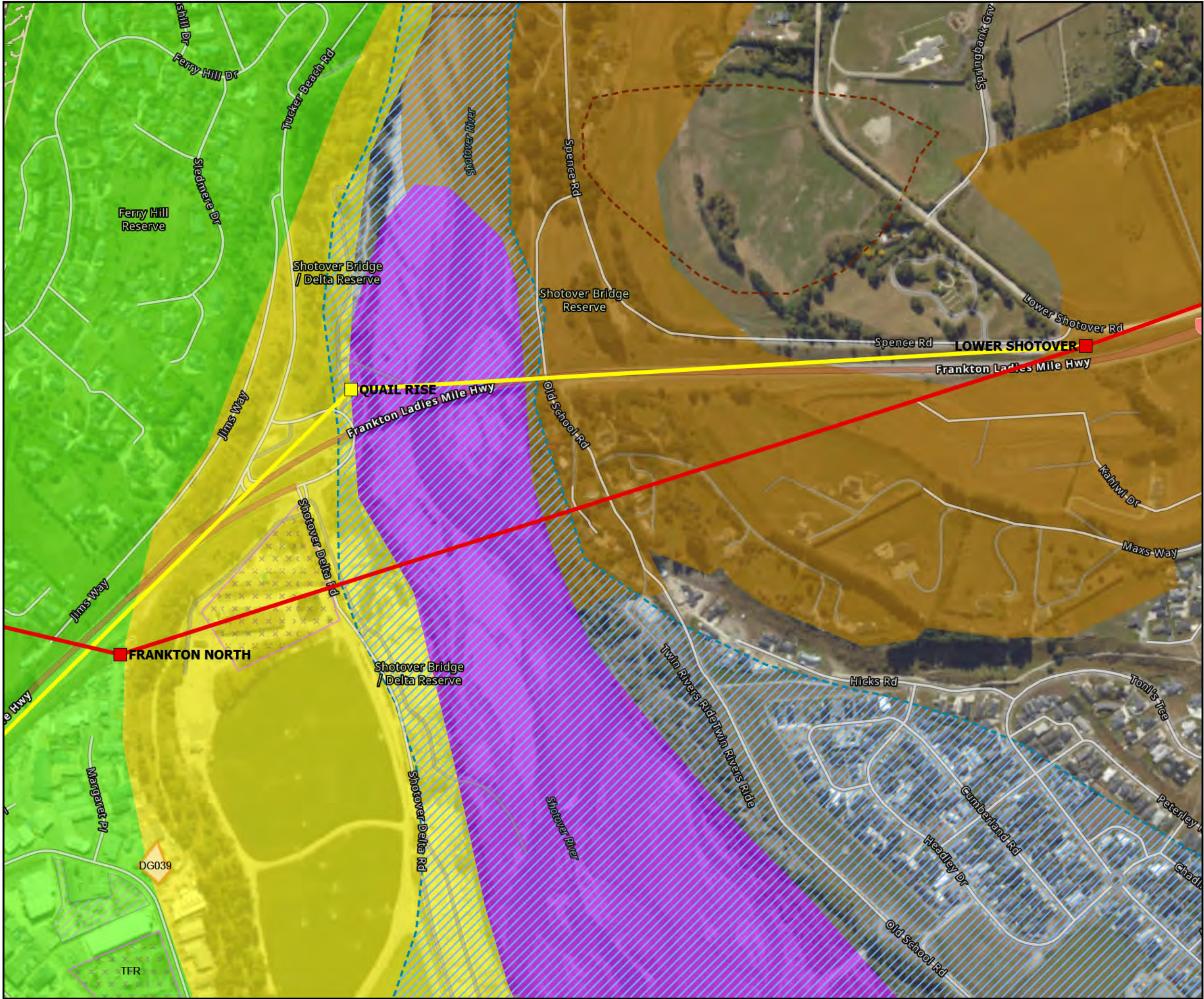
Southern Infrastructure (Cable Car) Ltd

Source: LINZ, Southern Infrastructure Limited, QLDC Hazards Database

Date: 31/10/2025	N ▲	Revision:
Scale: 1:6,000 @ A3		4
Project: 3370-25		







**LEGEND**

- Airport to Town Centre Line
- Airport to Town Centre Stations
- Frankton North to Ladies Mile Line
- Frankton North to Ladies Mile Stations
- Frankton Flats to Ladies Mile Line
- Frankton Flats to Ladies Mile Stations
- Pedestrian Overpass
- ?? Flooding - rainfall
- Shallow Slips and Debris Flows in Colluvium
- Potentially Contaminated Sites
- Potentially Contaminated Sites
- Managed or Remediated
- Dangerous Goods Licence
- Landslide Areas - non verified/outside priority areas
- Liquefaction Risk**
- LIC 1 - Nil to Low (T&T 2012)
- LIC 1 (P) - Probably Low (T&T 2012)
- Possibly Susceptible (Opus 2002) Location approximates
- Susceptible (Opus 2002) Location approximate

**HAZARDS**

**Queenstown Cable Car**

**Southern Infrastructure (Cable Car) Ltd**

Source: LINZ, Southern Infrastructure Limited, QLDC Hazards Database

Date: 31/10/2025	N ▲	Revision:
Scale: 1:7,000 @ A3		4
Project: 3370-25		







### LEGEND

-  Airport to Town Centre Line
  -  Airport to Town Centre Stations
  -  Frankton North to Ladies Mile Line
  -  Frankton North to Ladies Mile Stations
  -  Frankton Flats to Ladies Mile Line
  -  Frankton Flats to Ladies Mile Stations
  -  Pedestrian Overpass
  -  Shallow Slips and Debris Flows in Colluvium
  -  Dangerous Goods Licence
- Alluvial Fans Regional scale**
-  active
- Liquefaction Risk**
-  LIC 1 - Nil to Low (T&T 2012)
  -  Possibly Susceptible (Opus 2002) Location approximates

## HAZARDS

## Queenstown Cable Car

**Southern Infrastructure (Cable Car) Ltd**

Source: LINZ, Southern Infrastructure Limited, QLDC Hazards Database

Date: 31/10/2025  
Scale: 1:5,000 @ A3  
Project: 3370-25

Revision:  
4





**LEGEND**

- Airport to Town Centre Line
- Airport to Town Centre Stations
- Frankton North to Ladies Mile Line
- Frankton North to Ladies Mile Stations
- Frankton Flats to Ladies Mile Line
- Frankton Flats to Ladies Mile Stations
- Pedestrian Overpass
- Shallow Slips and Debris Flows in Colluvium

**Liquefaction Risk**

- LIC 1 - Nil to Low (T&T 2012)
- LIC 1 (P) - Probably Low (T&T 2012)

**HAZARDS**

**Queenstown Cable Car**

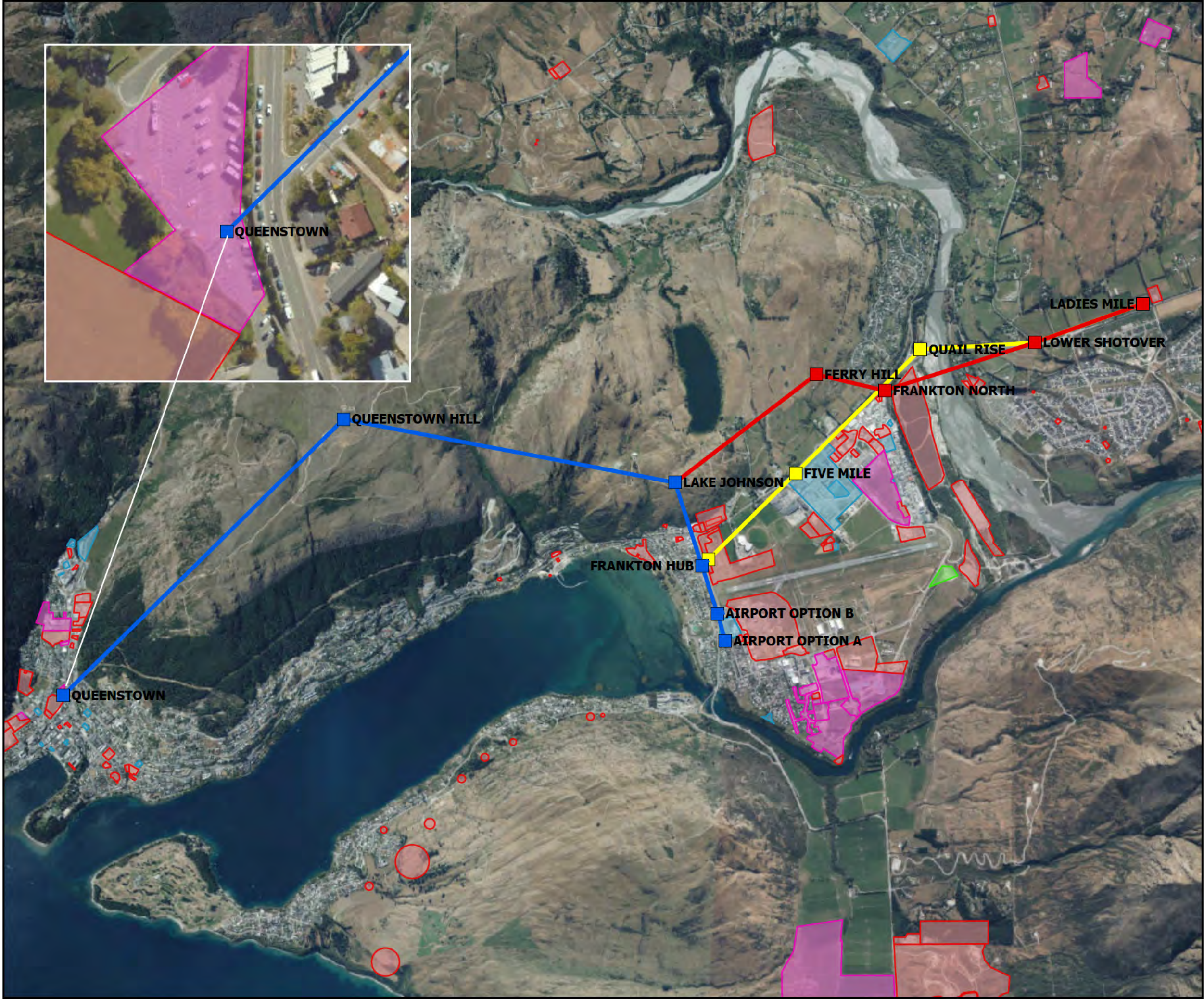
Southern Infrastructure (Cable Car) Ltd

Source: LINZ, Southern Infrastructure Limited, QLDC Hazards Database

Date: 31/10/2025	N	Revision:
Scale: 1:3,000 @ A3	▲	4
Project: 3370-25		







**LEGEND**

- Airport to Town Centre Line
- Airport to Town Centre Stations
- Frankton North to Ladies Mile Line
- Frankton North to Ladies Mile Stations
- Frankton Flats to Ladies Mile Line
- Frankton Flats to Ladies Mile Stations
- Pedestrian Overpass

**ORC HAIL Register**

- Verified HAIL
- Verified Non-HAIL
- Unverified HAIL
- Entered in Error

**HAIL OVERVIEW**

**Queenstown Cable Car**

**Southern Infrastructure (Cable Car) Ltd**

Source: LINZ, ORC

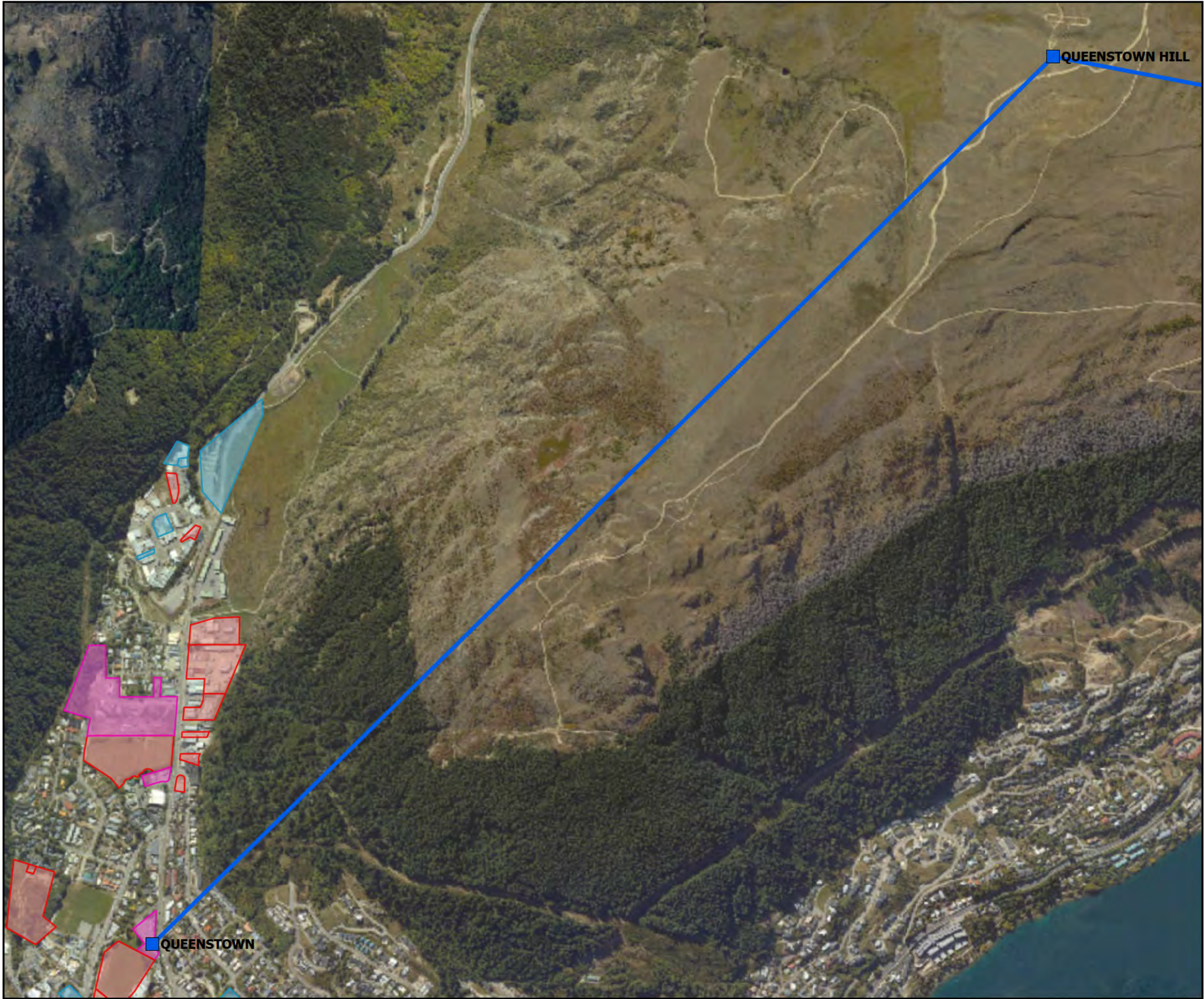
Date: 31/10/2025  
Scale: 1:45,000 @ A3  
Project: 3370-25



Revision:  
**4**







**LEGEND**

Airport to Town Centre Stations

Airport to Town Centre Line

**ORC HAIL Register**

Verified HAIL

Verified Non-HAIL

Unverified HAIL

Entered in Error

Under Review

Other

**HAIL**

**Queenstown Cable Car**

**Southern Infrastructure (Cable Car) Ltd**

Source: LINZ, Southern Infrastructure Limited, ORC

Date: 31/10/2025

Scale: 1:14,000 @ A3

Project: 3370-25

N

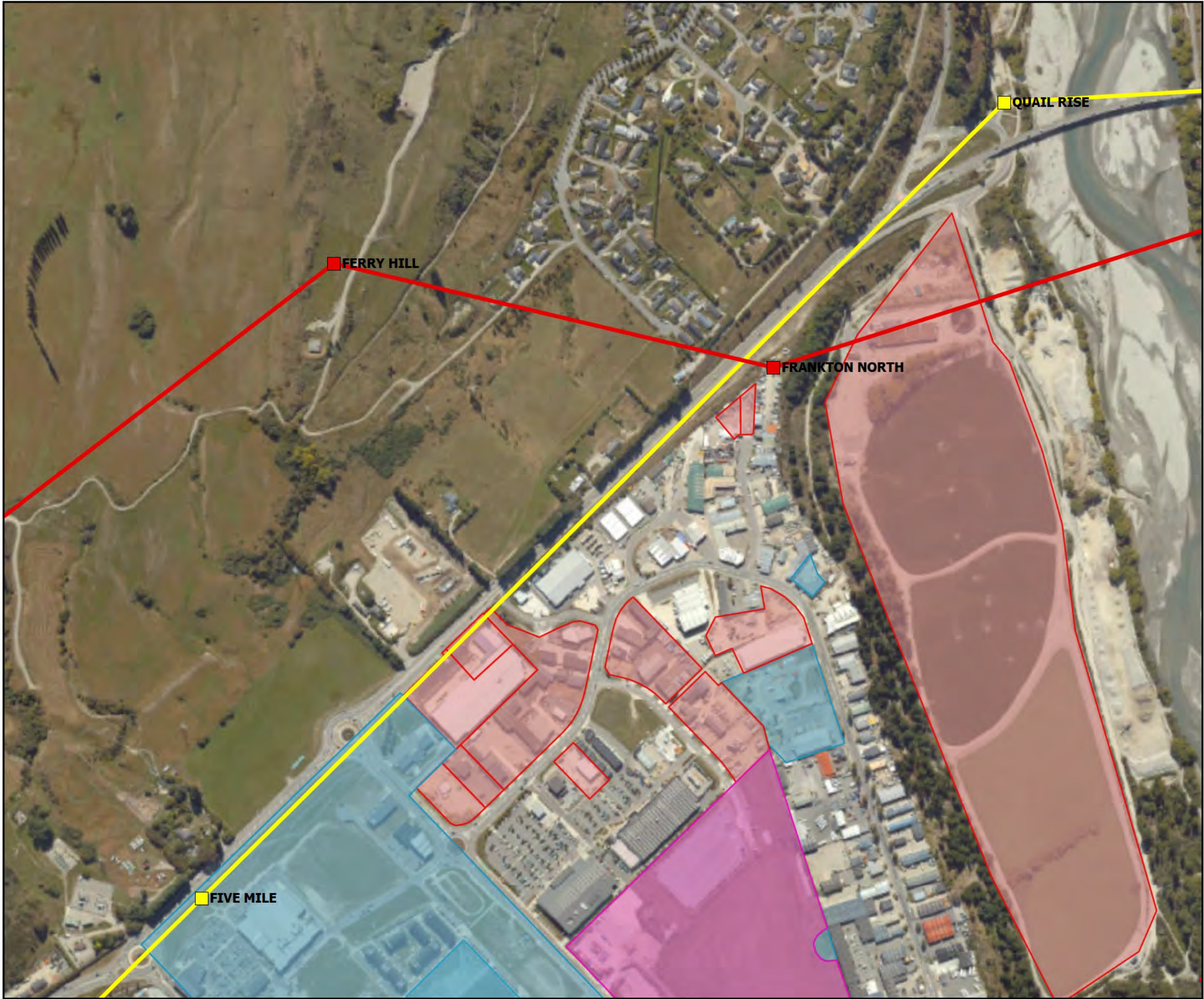
▲

Revision:

4

TOWNPLANNING GROUP





**LEGEND**

Frankton North to Ladies Mile Stations

Frankton North to Ladies Mile Line

Frankton Flats to Ladies Mile Stations

Frankton Flats to Ladies Mile Line

**ORC HAIL Register**

Verified HAIL

Verified Non-HAIL

Unverified HAIL

Entered in Error

Under Review

Other

**HAIL**

**Queenstown Cable Car**

**Southern Infrastructure (Cable Car) Ltd**

Source: LINZ, Southern Infrastructure Limited, ORC

Date: 31/10/2025

Scale: 1:7,000 @ A3

Project: 3370-25

N

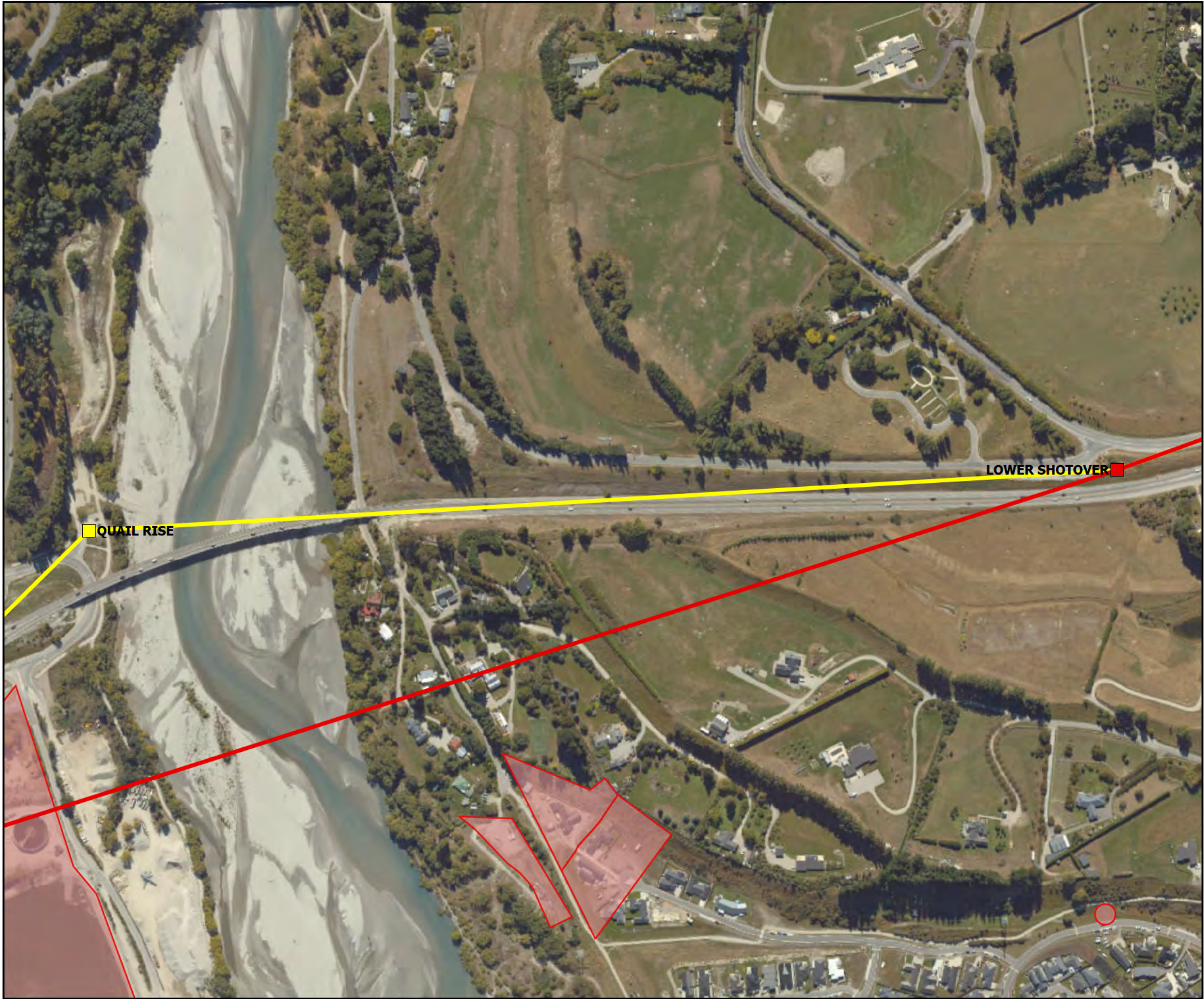
▲

Revision:

4

TOWNPLANNING GROUP





**LEGEND**

Frankton North to Ladies Mile Stations

Frankton North to Ladies Mile Line

Frankton Flats to Ladies Mile Stations

Frankton Flats to Ladies Mile Line

**ORC HAIL Register**

Verified HAIL

Verified Non-HAIL

Unverified HAIL

Entered in Error

Under Review

Other

**HAIL**

**Queenstown Cable Car**

**Southern Infrastructure (Cable Car) Ltd**

Source: LINZ, Southern Infrastructure Limited, ORC

Date: 31/10/2025

Scale: 1:5,000 @ A3

Project: 3370-25

N

▲

Revision:

4

**TOWNPLANNING**  
GROUP





**LEGEND**

- Frankton North to Ladies Mile Stations
- Frankton North to Ladies Mile Line
- Frankton Flats to Ladies Mile Stations
- Frankton Flats to Ladies Mile Line

**ORC HAIL Register**

- Verified HAIL
- Verified Non-HAIL
- Unverified HAIL
- Entered in Error
- Under Review
- Other

**HAIL**

**Queenstown Cable Car**

**Southern Infrastructure (Cable Car) Ltd**

Source: LINZ, Southern Infrastructure Limited, ORC

Date: 31/10/2025	N ▲	Revision:
Scale: 1:5,000 @ A3		4
Project: 3370-25		







**LEGEND**

Airport to Town Centre Stations

Airport to Town Centre Line

Frankton North to Ladies Mile Line

**ORC HAIL Register**

Verified HAIL

Verified Non-HAIL

Unverified HAIL

Entered in Error

Under Review

Other

**HAIL**

**Queenstown Cable Car**

**Southern Infrastructure (Cable Car) Ltd**

Source: LINZ, Southern Infrastructure Limited, ORC

Date: 31/10/2025

Scale: 1:14,000 @ A3

Project: 3370-25

N

Revision:

4

**TOWNPLANNING**  
GROUP

Disclaimer: This plan has been prepared on behalf and for the client. Town Planning Group NZ Ltd accepts no liability or responsibility in respect upon this plan by a third party. The concepts and information contained on this plan is the copyright of the Town Planning Group NZ Ltd. Use or copying of the information on this plan without written permission of Town Planning Group NZ Ltd constitutes an infringement of copyright.





### LEGEND

- Airport to Town Centre Stations
- Airport to Town Centre Line
- Frankton North to Ladies Mile Line
- Frankton Flats to Ladies Mile Stations
- Frankton Flats to Ladies Mile Line
- Pedestrian Overpass

### ORC HAIL Register

- Verified HAIL
- Verified Non-HAIL
- Unverified HAIL
- Entered in Error
- Under Review
- Other

## HAIL

### Queenstown Cable Car

Southern Infrastructure (Cable Car) Ltd

Source: LINZ, Southern Infrastructure Limited, ORC

Date: 31/10/2025  
Scale: 1:5,000 @ A3  
Project: 3370-25



Revision:  
4







**LEGEND**

- Airport to Town Centre Stations
- Airport to Town Centre Line
- Frankton Flats to Ladies Mile Stations
- Frankton Flats to Ladies Mile Line
- Pedestrian Overpass

**ORC HAIL Register**

- Verified HAIL
- Verified Non-HAIL
- Unverified HAIL
- Entered in Error
- Under Review
- Other

**HAIL**

**Queenstown Cable Car**

**Southern Infrastructure (Cable Car) Ltd**

Source: LINZ, Southern Infrastructure Limited, ORC

Date: 31/10/2025  
Scale: 1:4,000 @ A3  
Project: 3370-25



Revision:  
**4**







**LEGEND**

- Airport to Town Centre Stations
- Airport to Town Centre Line
- Frankton North to Ladies Mile Stations
- Frankton North to Ladies Mile Line
- Frankton Flats to Ladies Mile Stations
- Frankton Flats to Ladies Mile Line

**ORC HAIL Register**

- Verified HAIL
- Verified Non-HAIL
- Unverified HAIL
- Entered in Error
- Under Review
- Other

**HAIL**

**Queenstown Cable Car**

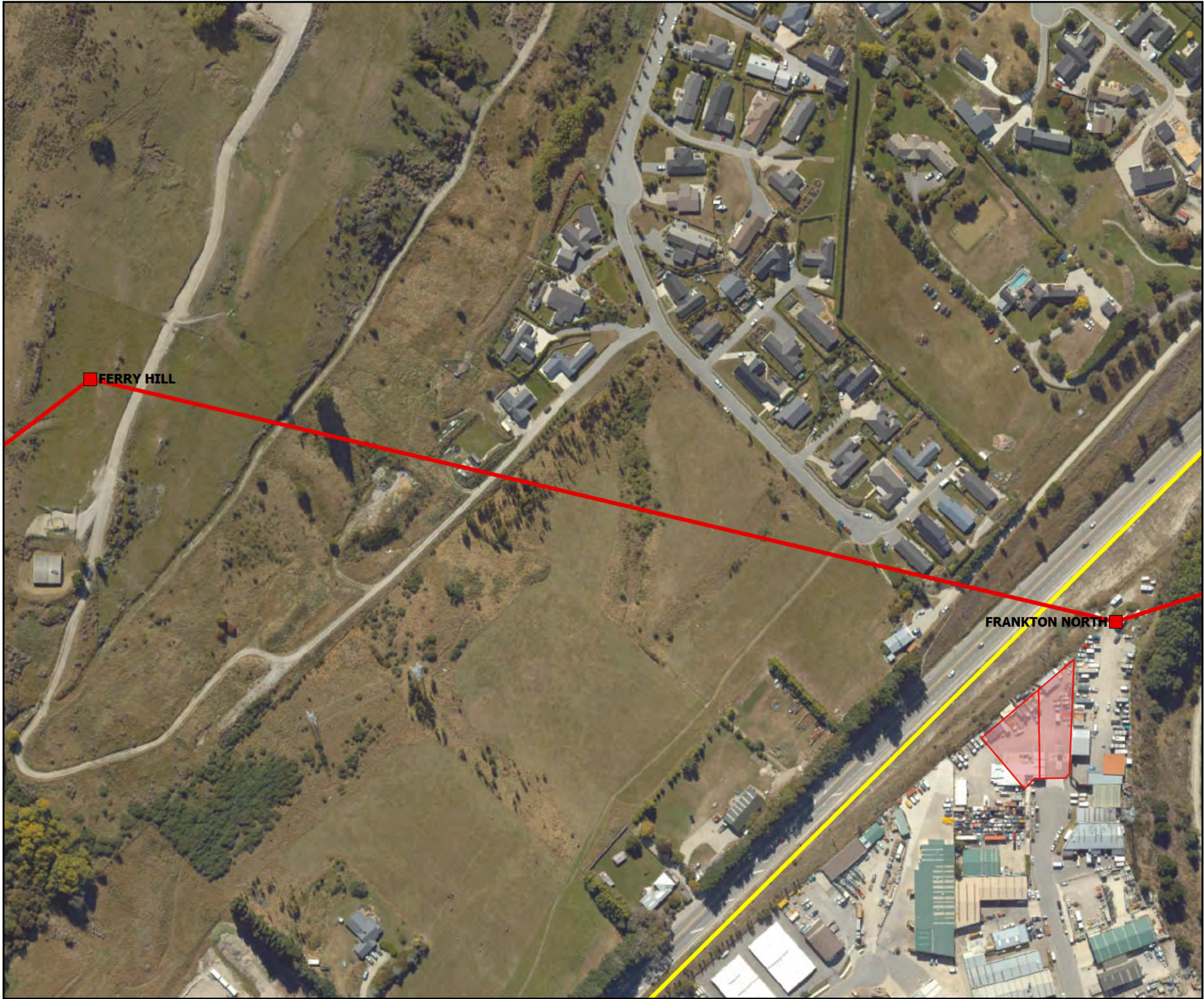
**Southern Infrastructure (Cable Car) Ltd**

Source: LINZ, Southern Infrastructure Limited, ORC

Date: 31/10/2025	N	Revision:
Scale: 1:6,000 @ A3	▲	4
Project: 3370-25		







LEGEND

Frankton North to Ladies Mile Stations

Frankton North to Ladies Mile Line

Frankton Flats to Ladies Mile Line

ORC HAIL Register

Verified HAIL

Verified Non-HAIL

Unverified HAIL

Entered in Error

Under Review

Other

HAIL

Queenstown Cable Car

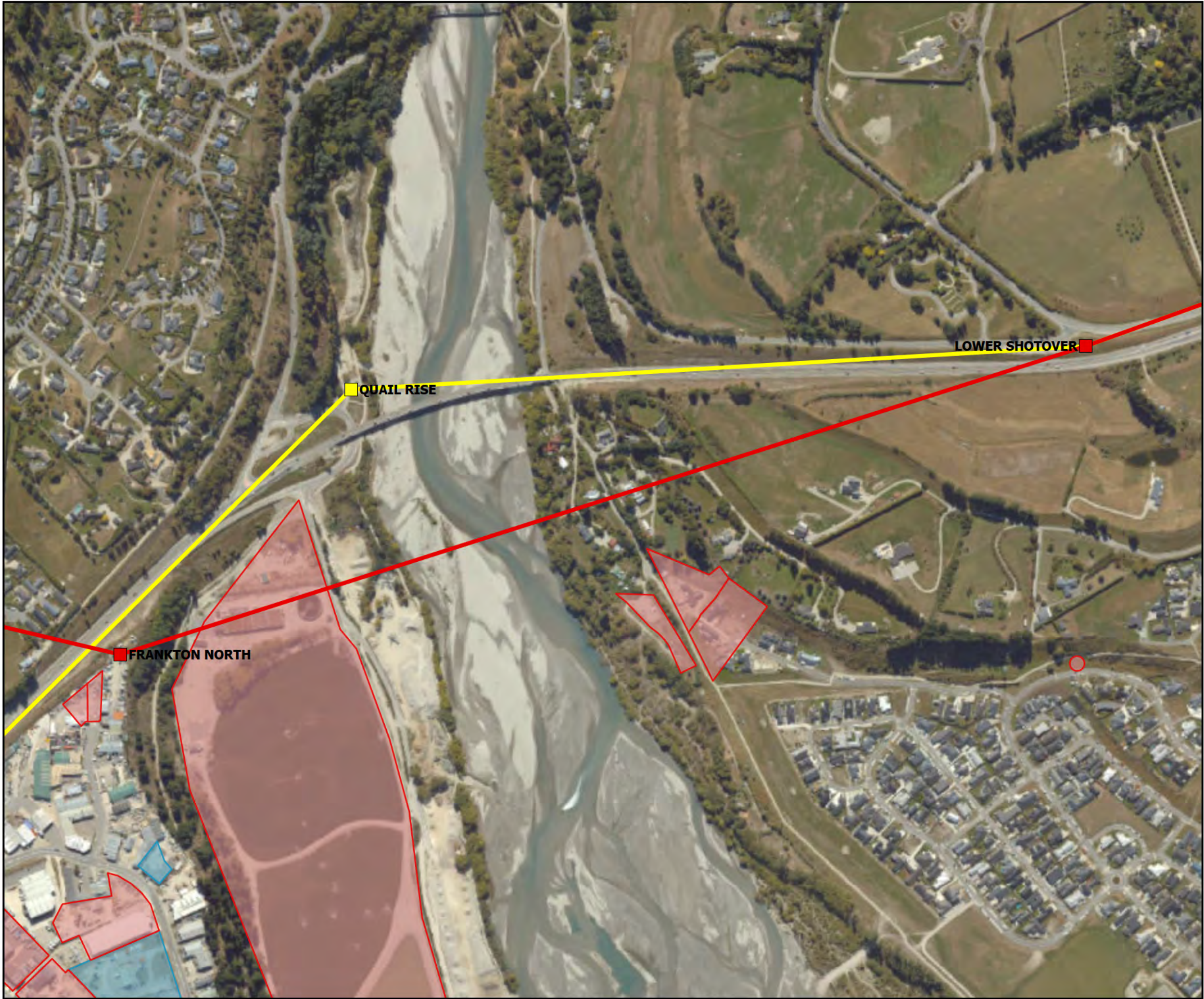
Southern Infrastructure (Cable Car) Ltd

Source: LINZ, Southern Infrastructure Limited, ORC

Date: 31/10/2025	N ▲	Revision:
Scale: 1:3,000 @ A3		4
Project: 3370-25		







LEGEND

Frankton North to Ladies Mile Stations

Frankton North to Ladies Mile Line

Frankton Flats to Ladies Mile Stations

Frankton Flats to Ladies Mile Line

ORC HAIL Register

Verified HAIL

Verified Non-HAIL

Unverified HAIL

Entered in Error

Under Review

Other

HAIL

Queenstown Cable Car

Southern Infrastructure (Cable Car) Ltd

Source: LINZ, Southern Infrastructure Limited, ORC

Date: 31/10/2025  
Scale: 1:7,000 @ A3  
Project: 3370-25

N  
▲

Revision:  
4

TOWNPLANNING GROUP





**LEGEND**

- Frankton North to Ladies Mile Stations
- Frankton North to Ladies Mile Line
- Frankton Flats to Ladies Mile Stations
- Frankton Flats to Ladies Mile Line

**ORC HAIL Register**

- Verified HAIL
- Verified Non-HAIL
- Unverified HAIL
- Entered in Error
- Under Review
- Other

**HAIL**

**Queenstown Cable Car**

**Southern Infrastructure (Cable Car) Ltd**

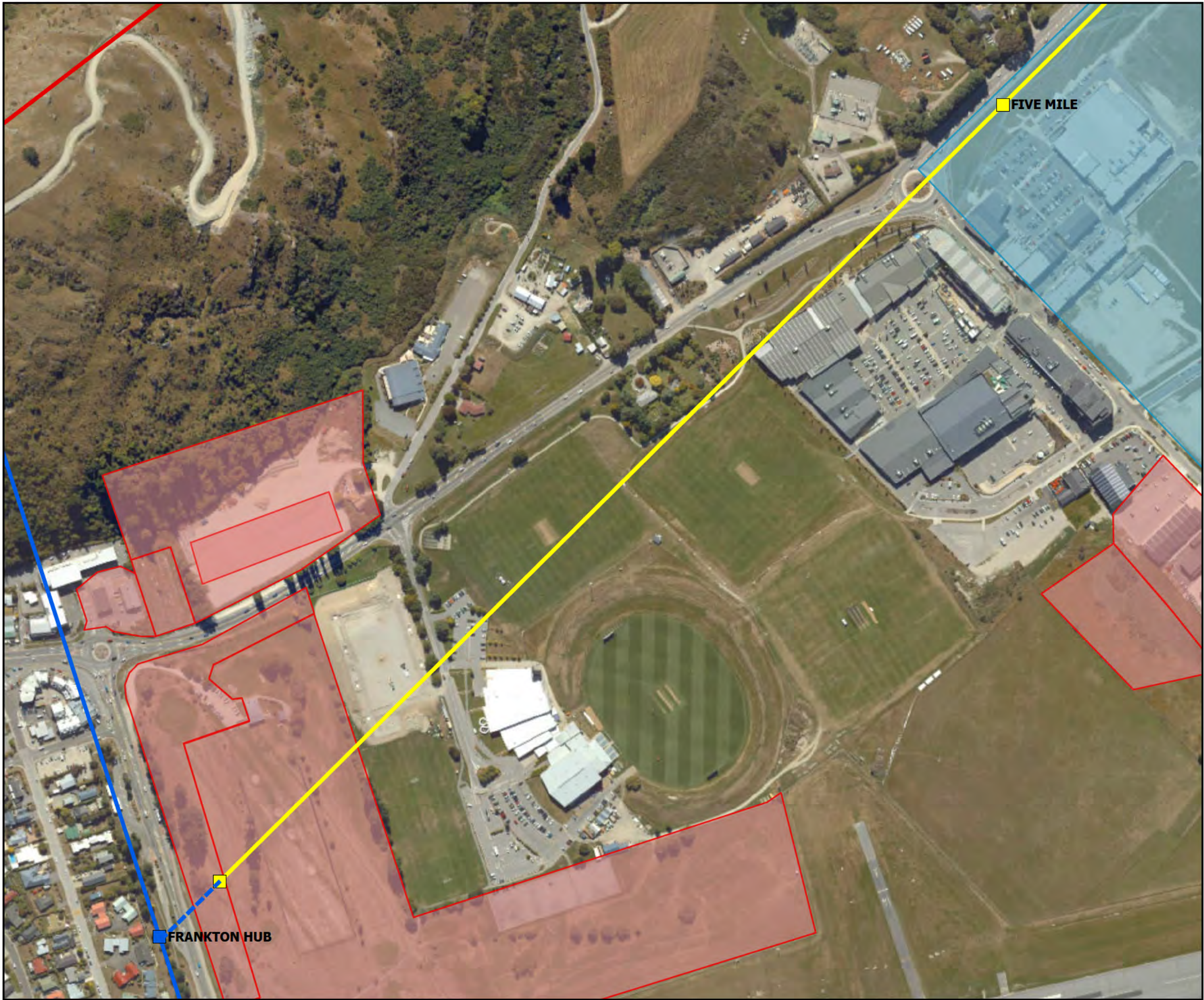
Source: LINZ, Southern Infrastructure Limited, ORC

Date: 31/10/2025	N ▲	Revision:
Scale: 1:5,000 @ A3		4
Project: 3370-25		



TOWNPLANNING  
GROUP





**LEGEND**

- Airport to Town Centre Stations
- Airport to Town Centre Line
- Frankton North to Ladies Mile Line
- Frankton Flats to Ladies Mile Stations
- Frankton Flats to Ladies Mile Line
- Pedestrian Overpass

**ORC HAIL Register**

- Verified HAIL
- Verified Non-HAIL
- Unverified HAIL
- Entered in Error
- Under Review
- Other

**HAIL**

**Queenstown Cable Car**


Southern Infrastructure (Cable Car) Ltd

Source: LINZ, Southern Infrastructure Limited, ORC

Date: 31/10/2025  
Scale: 1:5,000 @ A3  
Project: 3370-25

N  
▲

Revision:  
**4**

 **TOWNPLANNING**  
GROUP