



CATCHMENT	AREA	10YR Q	100YR Q
	m2	cms	cms
1	11691	0.22	0.45
2	8728	0.17	0.34
3	12864	0.24	0.50
4	17391	0.33	0.63
5	20539	0.44	0.75
6	17549	0.37	0.64
7	6017	0.13	0.23
8	2409	0.04	0.10
9	2839	0.06	0.12
10	1530	0.04	0.06
11	2342	0.06	0.10
12	2769	0.07	0.11
13	3924	0.10	0.16
14	2315	0.06	0.10
15	4820	0.12	0.20
16	9318	0.23	0.39

- NOTES
1. ALL WORKS TO BE IN ACCORDANCE WITH AUCKLAND COUNCIL STANDARDS.
 2. COORDINATES IN TERMS OF NZ GEODETIC DATUM MT EDEN 2000. LEVELS IN TERMS OF NEW ZEALAND VERTICAL DATUM 2016.
 3. IT IS THE CONTRACTORS RESPONSIBILITY TO LOCATE ALL SERVICES THAT MAY BE AFFECTED BY THEIR OPERATIONS.

- LEGEND
- EX BDY
 - PROP BDY
 - STAGE BOUNDARY
 - EX OLFP
 - REMOVED EX OLFP
 - EXISTING STREAMS
 - PR SW FLOW PTH
 - PR SW PIPE
 - RIPARIAN YARD 20m SETBACK
 - WETLAND AREA 100m SETBACK
 - EX/PROP SWMH
 - PR RIPRAP
 - PR CULVERT
 - EX CULVERT
 - PR SCRUFFY DOME
 - OLFP FLOW DIRECTION

A	RC		WY	03/2025
Rev	Description		By	Date
			By	Date
Survey	LANDPRO			03/22
Design	WY			03/2025
Drawn	WY			03/2025
Checked	RW/KH			03/2025



Project
**DEVELOPMENT OF
RIVERHEAD FOREST
FOR RANGITOOPUNI
DEVELOPMENTS LIMITED
PARTNERSHIP**

Title
**PROPOSED STORMWATER
CATCHMENT PLAN
STAGE 1-5**

Project no.	147007
Scale	1:5000 @ A3
Cad file	147007-M-C455 SW CATCHMENT.DWG
Drawing no.	C455
Rev	A

PROPOSED BOX CULVERT 1-1, DETAILS REFER TO C484 FROM PROJECT NUMBER 147007 AND FLOOD ASSESSMENT REPORT, 100YR Q= 15.61cms REFER TO CULVERT 1-1 HY-8 REPORT

PROP SW CIRCULAR
CULVERT 5-1 WITH Ø 450mm
100YR Q= 0.11cms

PROP SW CIRCULAR
CULVERT 5-2 WITH Ø 450mm
100YR Q= 0.10cms

PROP SW CIRCULAR
CULVERT 4-1 WITH Ø 450mm
100YR Q= 0.1cms

PROP SW CIRCULAR
CULVERT 3-5 WITH Ø 525mm
100YR Q= 0.23cms

PROP SW CIRCULAR
CULVERT 3-4 WITH Ø 825mm
100YR Q= 0.68cms

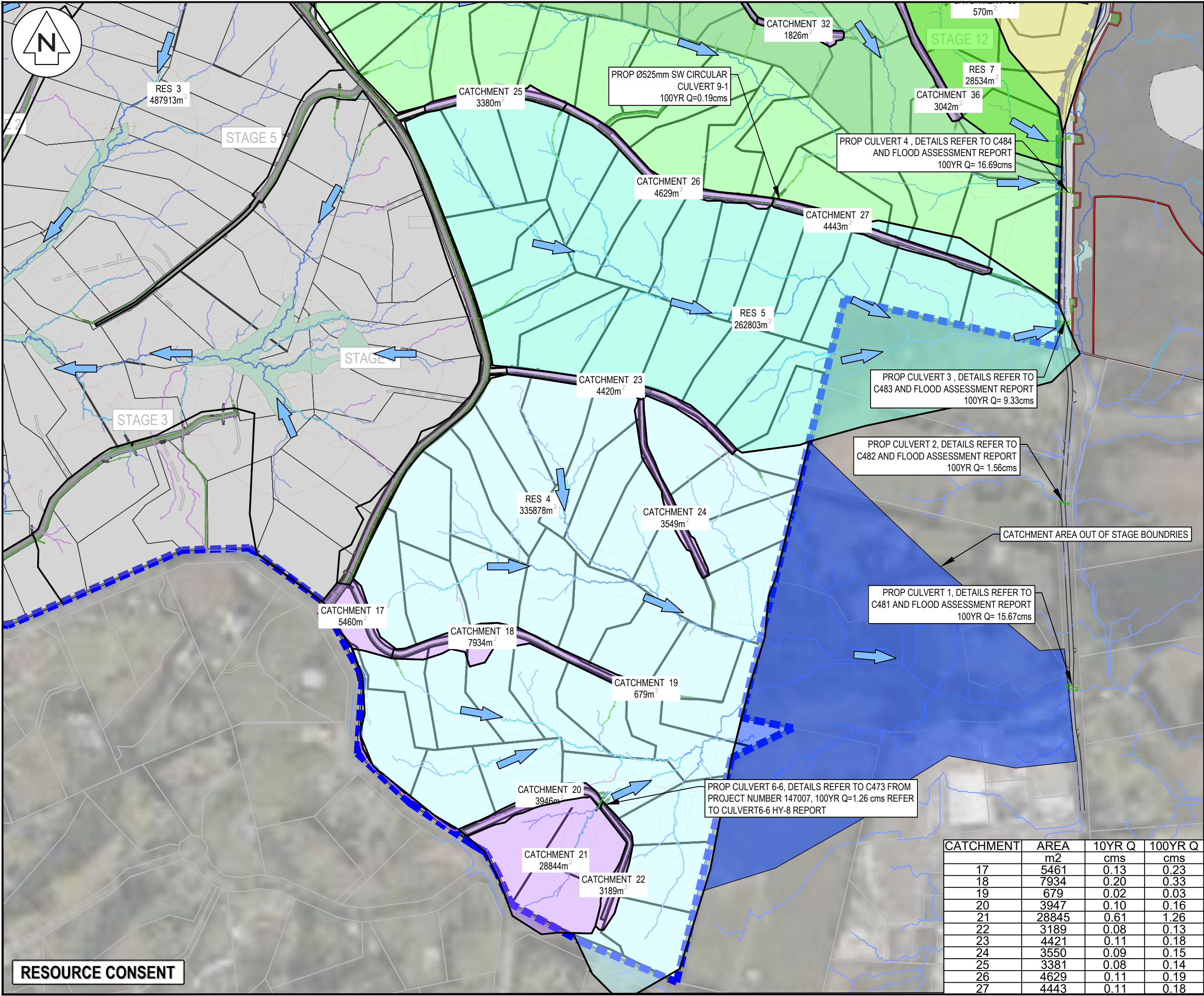
PROP SW CIRCULAR
CULVERT 3-4 WITH Ø 825mm
100YR Q= 0.75cms

PROP SW CIRCULAR CULVERT
3-2 WITH Ø 825mm
100YR Q= 0.63cms

PROP SW CIRCULAR CULVERT
3-1 WITH Ø 675mm
100YR Q= 0.50 cms

RESOURCE CONSENT

DATE: 10/03/25 FILE PATH: F:\Maven\PROJECTS\147007 RIVERHEAD FOREST\DWG\147007-M-C455 SW CATCHMENT.DWG



- NOTES
1. ALL WORKS TO BE IN ACCORDANCE WITH AUCKLAND COUNCIL STANDARDS.
 2. COORDINATES IN TERMS OF NZ GEODETIC DATUM MT EDEN 2000. LEVELS IN TERMS OF NEW ZEALAND VERTICAL DATUM 2016.
 3. IT IS THE CONTRACTORS RESPONSIBILITY TO LOCATE ALL SERVICES THAT MAY BE AFFECTED BY THEIR OPERATIONS.

- LEGEND
- EX BDY
 - PROP BDY
 - STAGE BOUNDARY
 - EX OLFP
 - REMOVED EX OLFP
 - EXISTING STREAMS
 - PR SW FLOW PTH
 - PR SW PIPE
 - RIPARIAN YARD 20m SETBACK
 - WETLAND AREA 100m SETBACK
 - EX/PROP SWMH
 - PR RIPRAP
 - PR CULVERT
 - EX CULVERT
 - PR SCRUFFY DOME
 - OLFP FLOW DIRECTION

A	RC	WY	03/2025
Rev	Description	By	Date
		By	Date
Survey	LANDPRO		03/22
Design	WY		03/2025
Drawn	WY		03/2025
Checked	RW/KH		03/2025

M

M A V E N

Maven Associates
09 571 0050
info@maven.co.nz
www.maven.co.nz
5 Owens Road, Epsom
Auckland 1023

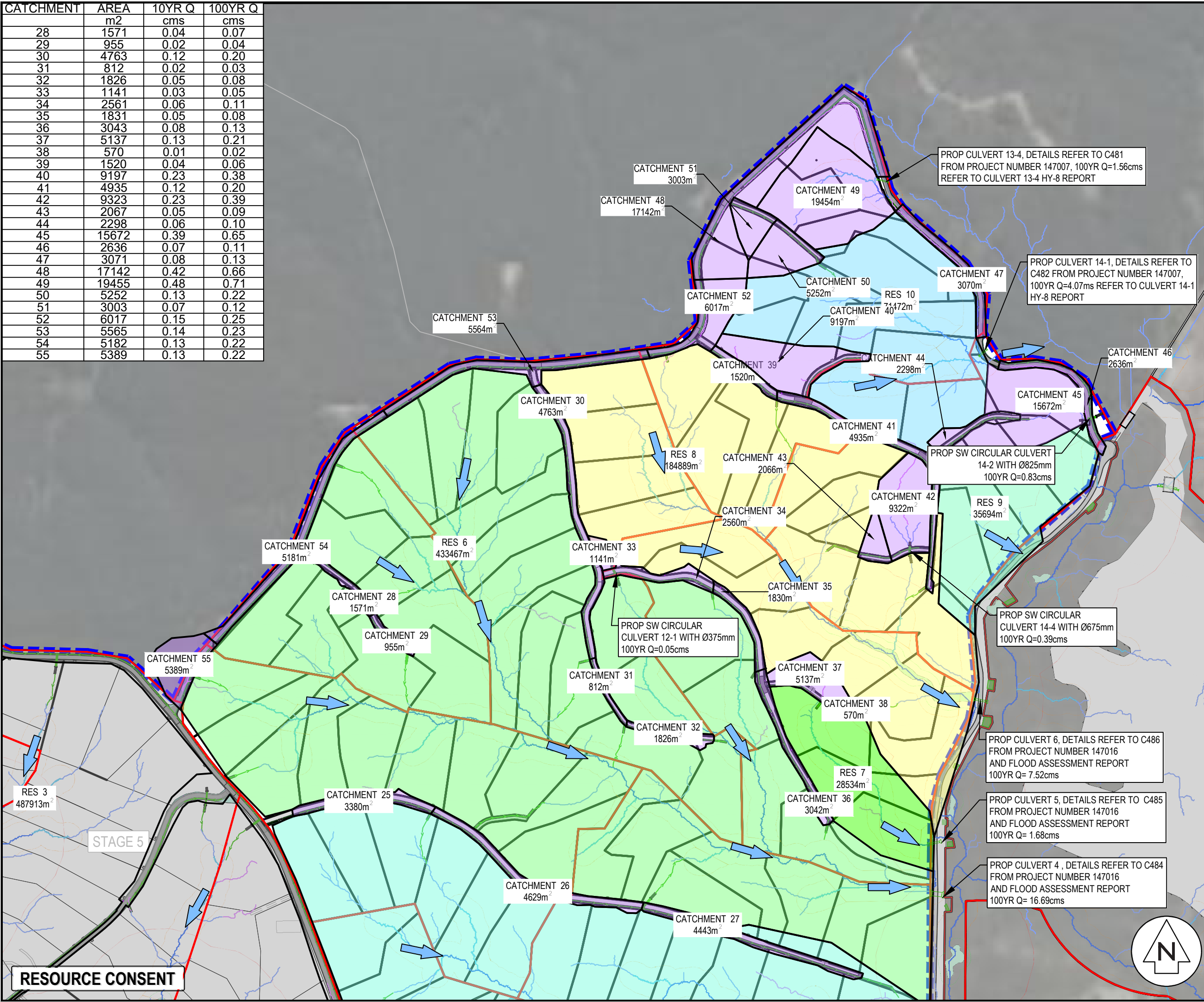
Project
DEVELOPMENT OF RIVERHEAD FOREST FOR RANGITOOPUNI DEVELOPMENTS LIMITED PARTNERSHIP

CATCHMENT	AREA m2	10YR Q cms	100YR Q cms
17	5461	0.13	0.23
18	7934	0.20	0.33
19	679	0.02	0.03
20	3947	0.10	0.16
21	28845	0.61	1.26
22	3189	0.08	0.13
23	4421	0.11	0.18
24	3550	0.09	0.15
25	3381	0.08	0.14
26	4629	0.11	0.19
27	4443	0.11	0.18

Title PROPOSED STORMWATER CATCHMENT PLAN STAGE 6-9	
Project no.	147007
Scale	1:5000 @ A3
Cad file	147007-M-C455 SW CATCHMENT.DWG
Drawing no.	C456
Rev	A

RESOURCE CONSENT

CATCHMENT	AREA	10YR Q	100YR Q
	m2	cms	cms
28	1571	0.04	0.07
29	955	0.02	0.04
30	4763	0.12	0.20
31	812	0.02	0.03
32	1826	0.05	0.08
33	1141	0.03	0.05
34	2561	0.06	0.11
35	1831	0.05	0.08
36	3043	0.08	0.13
37	5137	0.13	0.21
38	570	0.01	0.02
39	1520	0.04	0.06
40	9197	0.23	0.38
41	4935	0.12	0.20
42	9323	0.23	0.39
43	2067	0.05	0.09
44	2298	0.06	0.10
45	15672	0.39	0.65
46	2636	0.07	0.11
47	3071	0.08	0.13
48	17142	0.42	0.66
49	19455	0.48	0.71
50	5252	0.13	0.22
51	3003	0.07	0.12
52	6017	0.15	0.25
53	5565	0.14	0.23
54	5182	0.13	0.22
55	5389	0.13	0.22



- NOTES
1. ALL WORKS TO BE IN ACCORDANCE WITH AUCKLAND COUNCIL STANDARDS.
 2. COORDINATES IN TERMS OF NZ GEODETIC DATUM MT EDEN 2000. LEVELS IN TERMS OF NEW ZEALAND VERTICAL DATUM 2016.
 3. IT IS THE CONTRACTORS RESPONSIBILITY TO LOCATE ALL SERVICES THAT MAY BE AFFECTED BY THEIR OPERATIONS.

LEGEND

- EX BDY
- PROP BDY
- STAGE BOUNDARY
- EX OLFP
- REMOVED EX OLFP
- EXISTING STREAMS
- PR SW FLOW PTH
- PR SW PIPE
- RIPARIAN YARD 20m SETBACK
- WETLAND AREA 100m SETBACK
- EX/PROP SWMH
- PR RIPRAP
- PR CULVERT
- EX CULVERT
- PR SCRUFFY DOME
- OLFP FLOW DIRECTION

A	RC	WY	03/2025
Rev	Description	By	Date
Survey	LANDPRO	Date	03/22
Design	WY	03/2025	
Drawn	WY	03/2025	
Checked	RW/KH	03/2025	

M **Maven Associates**
09 571 0050
info@maven.co.nz
www.maven.co.nz
5 Owens Road, Epsom
Auckland 1023

Project
DEVELOPMENT OF RIVERHEAD FOREST FOR RANGITOOPUNI DEVELOPMENTS LIMITED PARTNERSHIP

Title
PROPOSED STORMWATER CATCHMENT PLAN STAGE 10-14

Project no.	147007
Scale	1:5000 @ A3
Cad file	147007-M-C455 SW CATCHMENT.DWG
Drawing no.	C457
Rev	A

DATE: 5/2/25 FILE PATH: F:\MAVEN\PROJECTS\147007 RIVERHEAD FOREST\DWG\147007-M-C455 SW CATCHMENT.DWG

RESOURCE CONSENT



6. APPROVED HARDFILL IS TO BE USED IN BACKFILLING OF ALL ROAD CROSSINGS AND VEHICLE CROSSINGS TO COUNCIL STANDARDS.
7. HEAVY DUTY MANHOLE LIDS AND FRAMES TO BE USED IN TRAFFICKED AREAS.
8. ALL CATCHPIT LEADS SHALL HAVE MIN COVER 1.0M.
9. ALL LINES TO BE ABANDONED SHALL BE SEALED AT EACH END. TIMING OF ALL SEALING TO BE COORDINATED WITH COUNCIL STAFF.

- NOTES
1. ALL WORKS TO BE IN ACCORDANCE WITH AUCKLAND COUNCIL STANDARDS.
 2. COORDINATES IN TERMS OF NZ GEODETIC DATUM MT EDEN 2000. LEVELS IN TERMS OF THE AUCKLAND VERTICAL DATUM 1946.
 3. IT IS THE CONTRACTORS RESPONSIBILITY TO LOCATE ALL SERVICES THAT MAY BE AFFECTED BY THEIR OPERATIONS.
 4. PIPE BEDDING: 0 - 10% GRANULAR BEDDING, 10 - 20% WEAK CONCRETE BEDDING GREATER THAN 20% WEAK CONCRETE BEDDING (7MPA PLUS ANTI SCOUR BLOCKS AT 6M CRS).
 5. EACH CONNECTION SHALL BE MARKED BY A 50MMX50MM TREATED PINE STAKE EXTENDING 600MM ABOVE GROUND LEVEL WITH THE TOP PAINTED. THIS MARKER POST SHALL BE PLACED ALONGSIDE A TIMBER MARKER INSTALLED AT THE TIME OF PIPELAYING AND EXTENDING FROM THE CONNECTION TO 150MM BELOW FINISHED GROUND LEVEL. CONNECTIONS SHALL BE ACCURATELY INDICATED ON "AS BUILT" PLANS.

- LEGEND
- EX BDY
 - PROP BDY
 - STAGE BOUNDARY
 - EX OLFP
 - REMOVED EX OLFP
 - EXISTING STREAMS
 - PR SW FLOW PTH
 - PR SW PIPE
 - RIPARIAN YARD 20m SETBACK
 - WETLAND AREA 100m SETBACK
 - EX/PROP SWMH
 - PROP SWCP SINGLE
 - PR INDICATIVE LEVEL
 - SPREADER - SUBJECT TO DETAIL DESIGN
 - PR RIPRAP
 - PR CIRCULAR CULVERT
 - EX CULVERT
 - PR CULVERT
 - PR SCRUFFY DOME

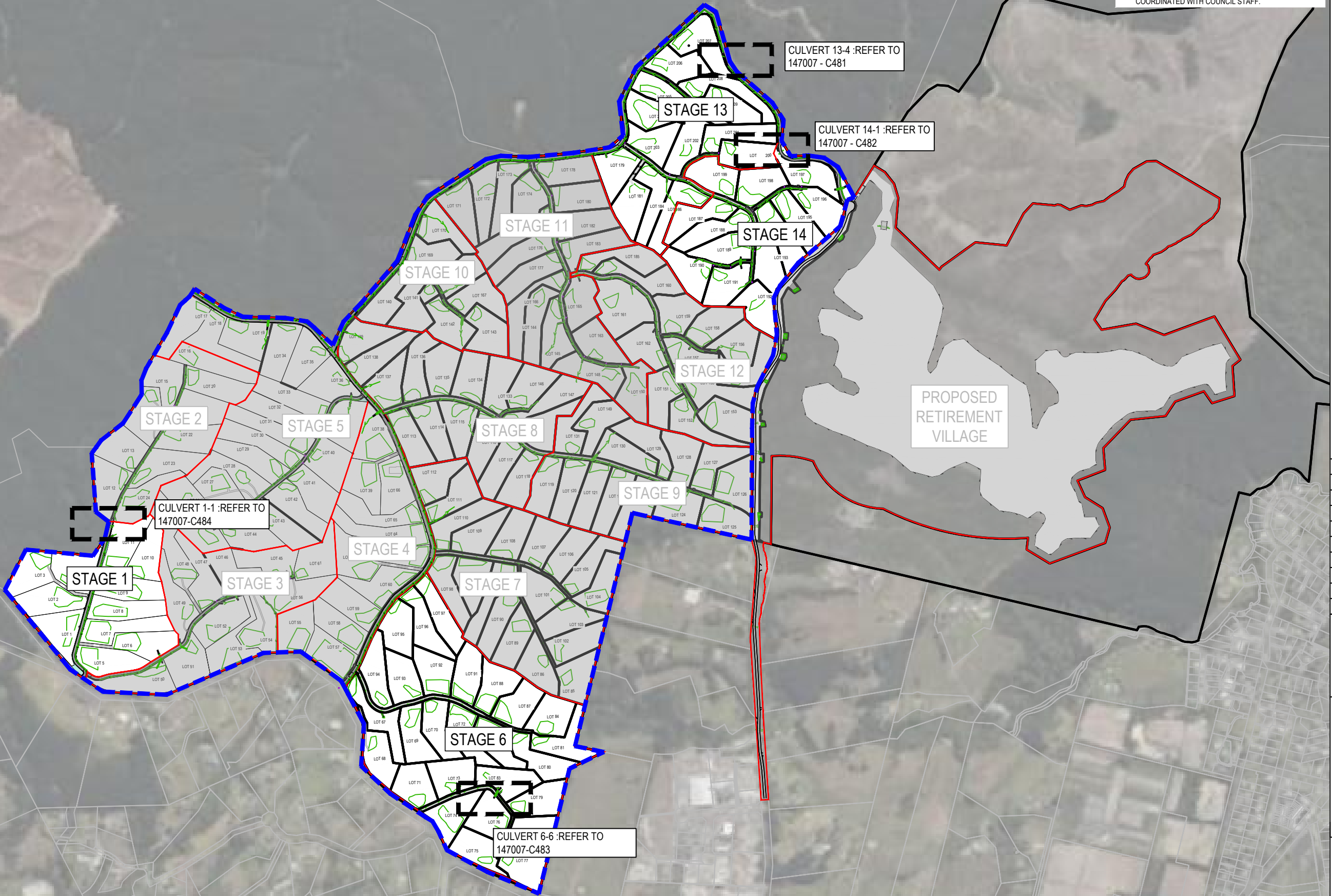
A	RESOURCE CONSENT	EZ	03/2025
Rev	Description	By	Date
		By	Date
Survey	LANDPRO		03/22
Design	EZ		03/2025
Drawn	EZ		03/2025
Checked	RW/KH		03/2025



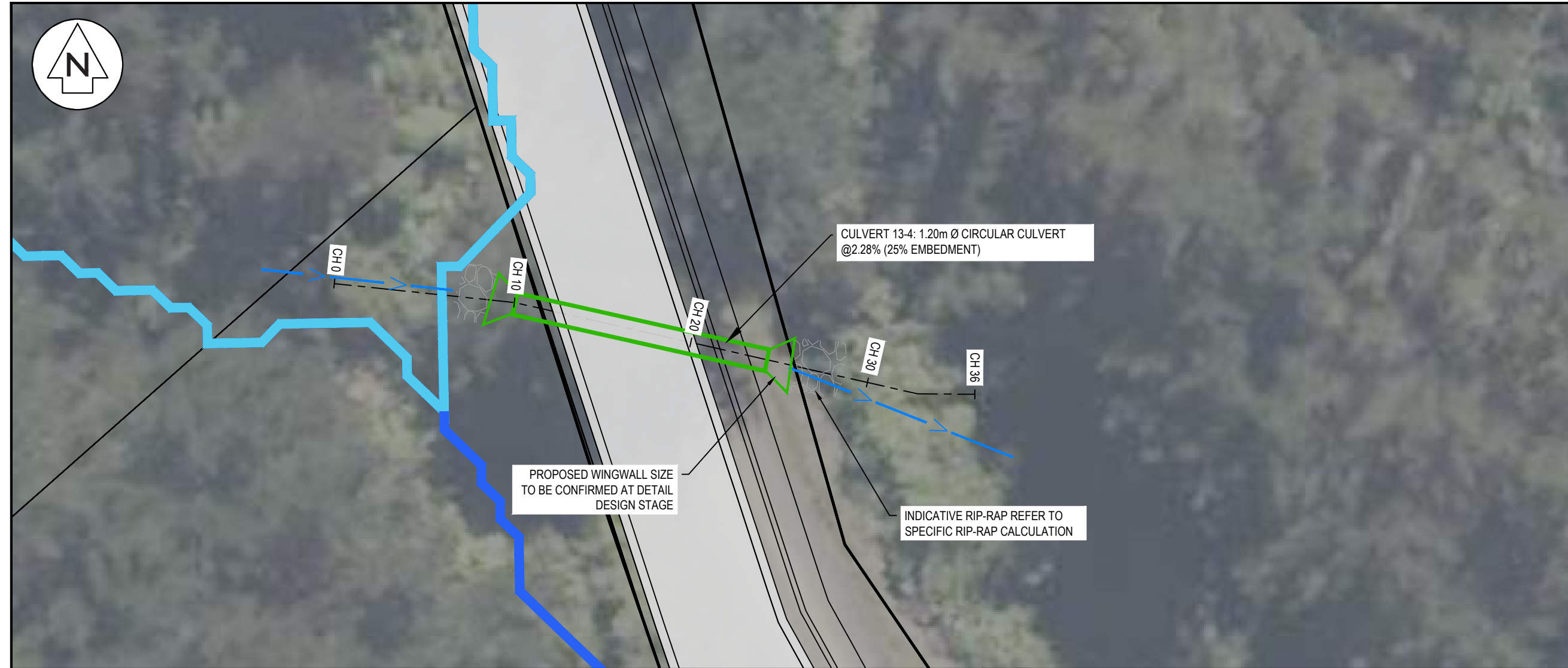
Project
**DEVELOPMENT OF
RIVERHEAD FOREST
FOR RANGITOOPUNI
DEVELOPMENTS LIMITED
PARTNERSHIP**

Title
**PROPOSED
CULVERT
OVERALL PLAN**

Project no.	147007
Scale	1:10,000 @ A3
Cad file	147007-M-C480 CULVERT OVERVIEW.DWG
Drawing no.	C480
Rev	A



RESOURCE CONSENT



Legend			
	EX BDY		
	PROP BDY		
	PR OLFP		

A	RESOURCE CONSENT	EZ	02/2025
Rev	Description	By	Date
Survey			
Design	EZ		03/2025
Drawn	EZ		03/2025
Checked	RW/KH		03/2025

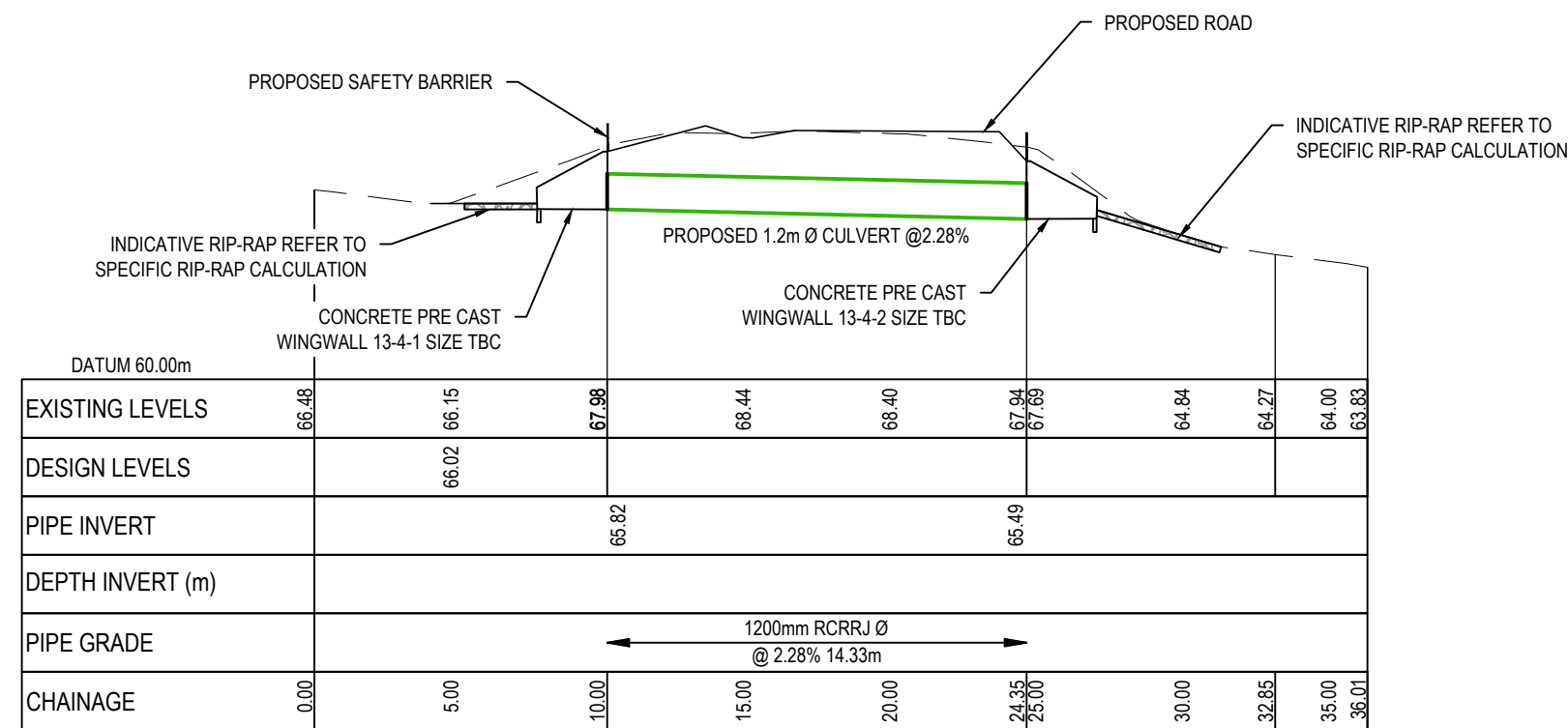


Maven Associates
09 571 0050
info@maven.co.nz
www.maven.co.nz
5 Owens Road, Epsom
Auckland 1023

Project
**DEVELOPMENT OF
RIVERHEAD FOREST
FOR RANGITOOPUNI
DEVELOPMENTS LIMITED
PARTNERSHIP**

Title
**CULVERT 13-4
LONG SECTION**

Project no.	147007		
Scale	1:250 @ A3		
Cad file	147007-M-C481 TYPICAL CULVERT CROSS SECTION.D		
Drawing no.	C481	Rev	A

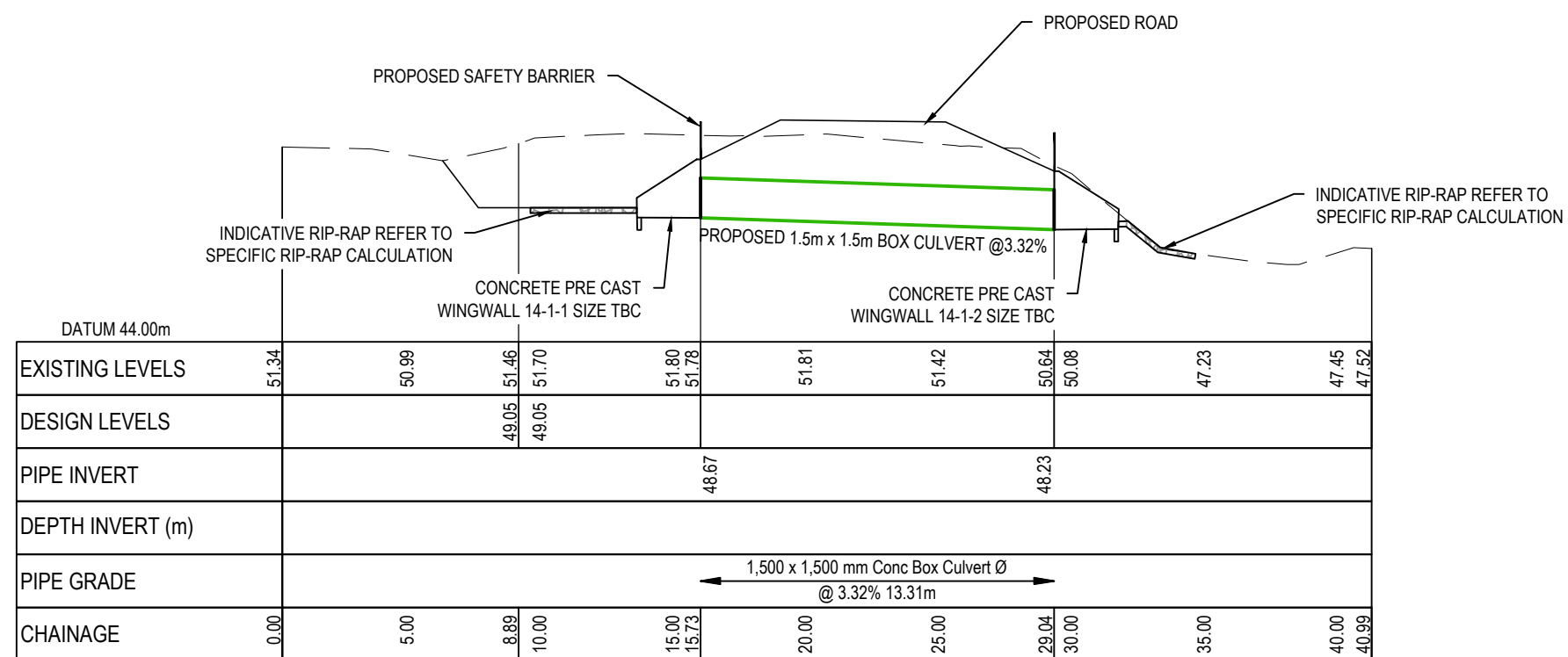
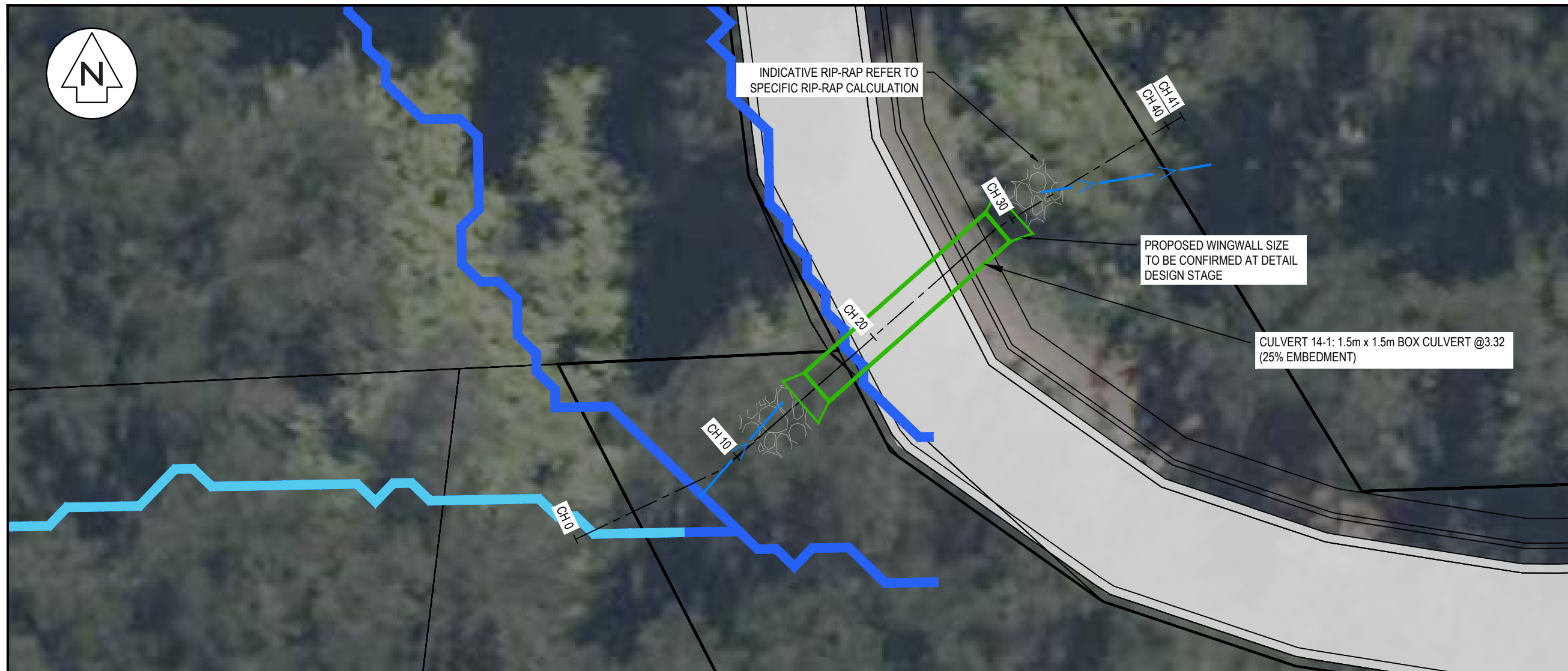


DATUM 60.00m											
EXISTING LEVELS	66.48	66.15	67.98	68.44	68.40	67.94	67.69	64.84	64.27	64.00	63.83
DESIGN LEVELS		66.02									
PIPE INVERT			65.82			65.49					
DEPTH INVERT (m)											
PIPE GRADE			<div>1200mm RCRRJ Ø @ 2.28% 14.33m</div>								
CHAINAGE	0.00	5.00	10.00	15.00	20.00	24.35	25.00	30.00	32.85	35.00	36.01


CULVERT 13-4 LONG SECTION
SCALE: HORI 1:150 VERT 1:150

RESOURCE CONSENT

DATE: 4/02/25 FILE PATH: P:\Maven\Projects\147007 RIVERHEAD FOREST\DWG\147007-M-C481 TYPICAL CULVERT CROSS SECTION.DWG

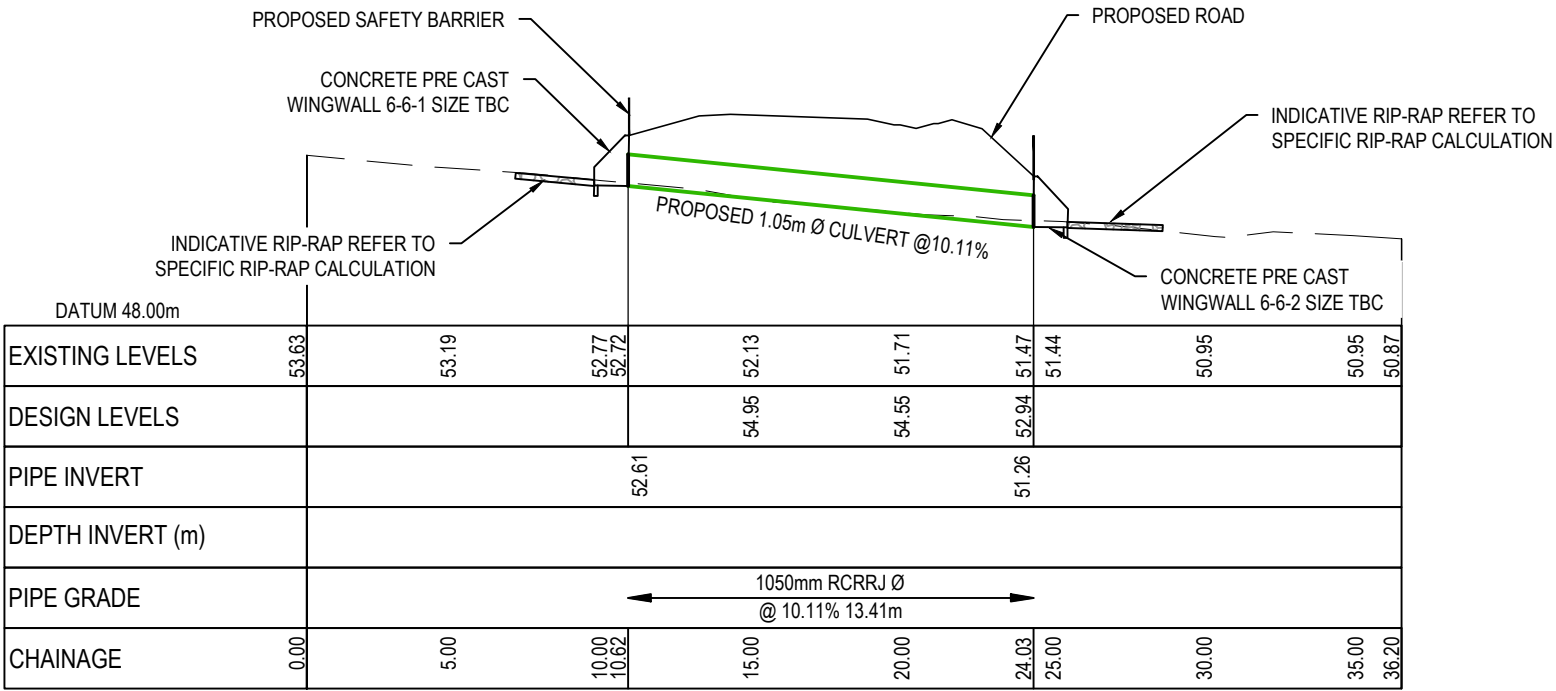


RESOURCE CONSENT

Legend		EX BDY	
		PROP BDY	
→ → → → →		PR OLFP	
A	RESOURCE CONSENT	EZ	02/2025
Rev	Description	By	Date
	By	Date	
Survey			
Design	EZ	03/2025	
Drawn	EZ	03/2025	
Checked	RW/KH	03/2025	
 <div style="display: inline-block; vertical-align: middle; margin-left: 10px;"> Maven Associates 09 571 0050 info@maven.co.nz www.maven.co.nz 5 Owens Road, Epsom Auckland 1023 </div>			
Project DEVELOPMENT OF RIVERHEAD FOREST FOR RANGITOOPUNI DEVELOPMENTS LIMITED PARTNERSHIP			
Title CULVERT 14-1 LONG SECTION			
Project no.	147007		
Scale	1:250 @ A3		
Cad file	147007-M-C481 TYPICAL CULVERT CROSS SECTION.DWG		
Drawing no.	C482	Rev	A



Legend			
	EX BDY		
	PROP BDY		
	PR OLFP		



CULVERT 6-6 LONG SECTION
SCALE: HORI 1:150 VERT 1:150

A	RESOURCE CONSENT	EZ	02/2025
Rev	Description	By	Date
Survey			
Design	EZ		03/2025
Drawn	EZ		03/2025
Checked	RW/KH		03/2025



Maven Associates
09 571 0050
info@maven.co.nz
www.maven.co.nz
5 Owens Road, Epsom
Auckland 1023

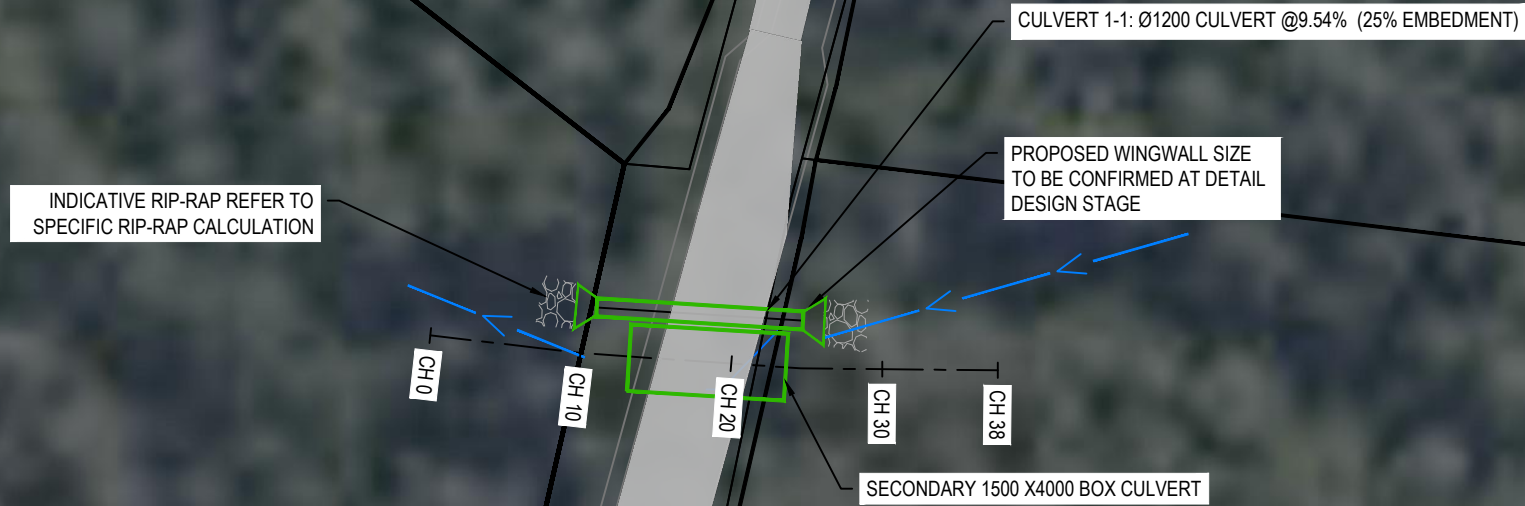
Project
**DEVELOPMENT OF
RIVERHEAD FOREST
FOR RANGITOOPUNI
DEVELOPMENTS LIMITED
PARTNERSHIP**

Title
**CULVERT 6-6
LONG SECTION**

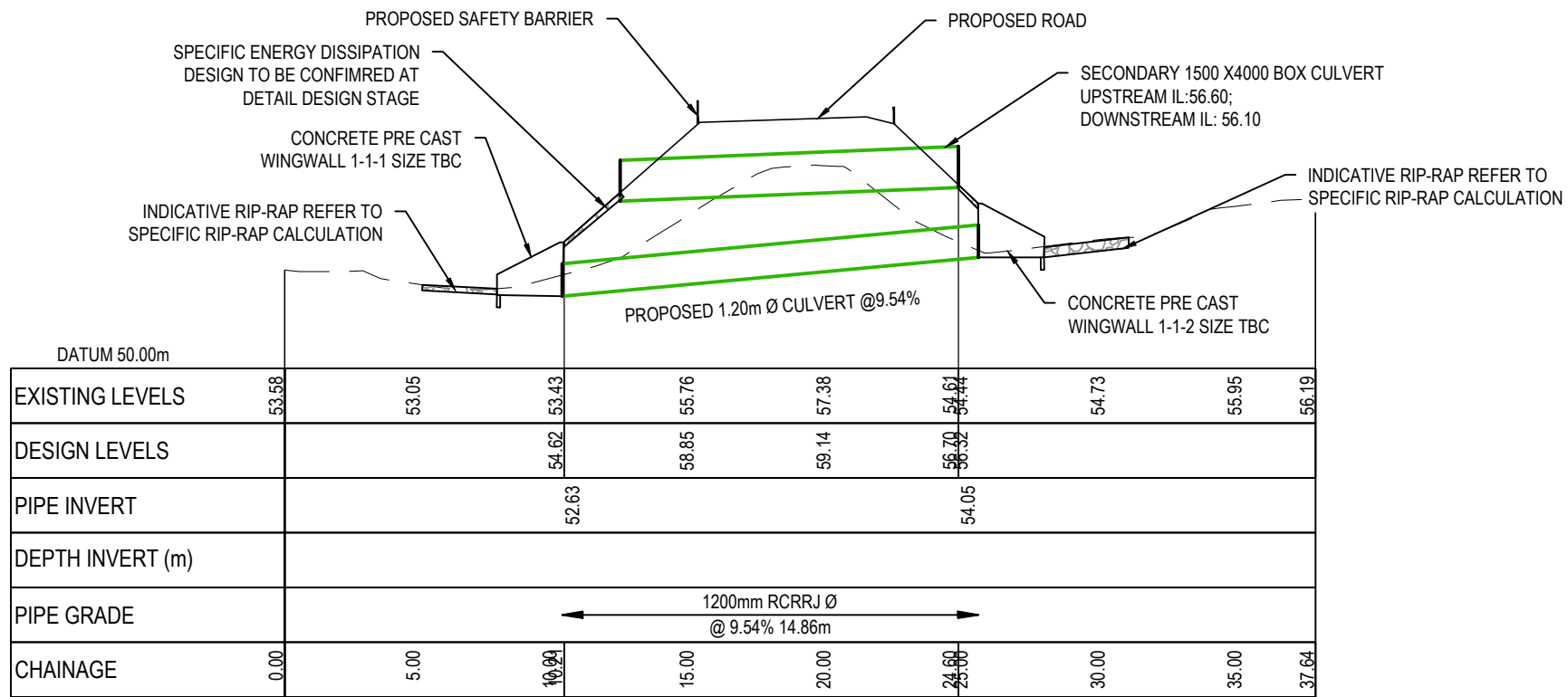
Project no.	147007
Scale	1:250 @ A3
Cad file	147007-M-C481 TYPICAL CULVERT CROSS SECTION.DWG
Drawing no.	C483
Rev	A

DATE: 4/02/25 FILE PATH: F:\Maven\Projects\147007 RIVERHEAD FOREST\DWG\AUTOCAD\TYPICAL CULVERT CROSS SECTION.DWG

RESOURCE CONSENT



Legend			
	EX BDY		PROP BDY
	PR OLFP		



CULVERT 1-1 LONG SECTION
SCALE: HORI 1:150 VERT 1:150

A	RESOURCE CONSENT	EZ	03/2025
Rev	Description	By	Date
Survey			
Design	EZ		03/2025
Drawn	EZ		03/2025
Checked	RW/KH		03/2025

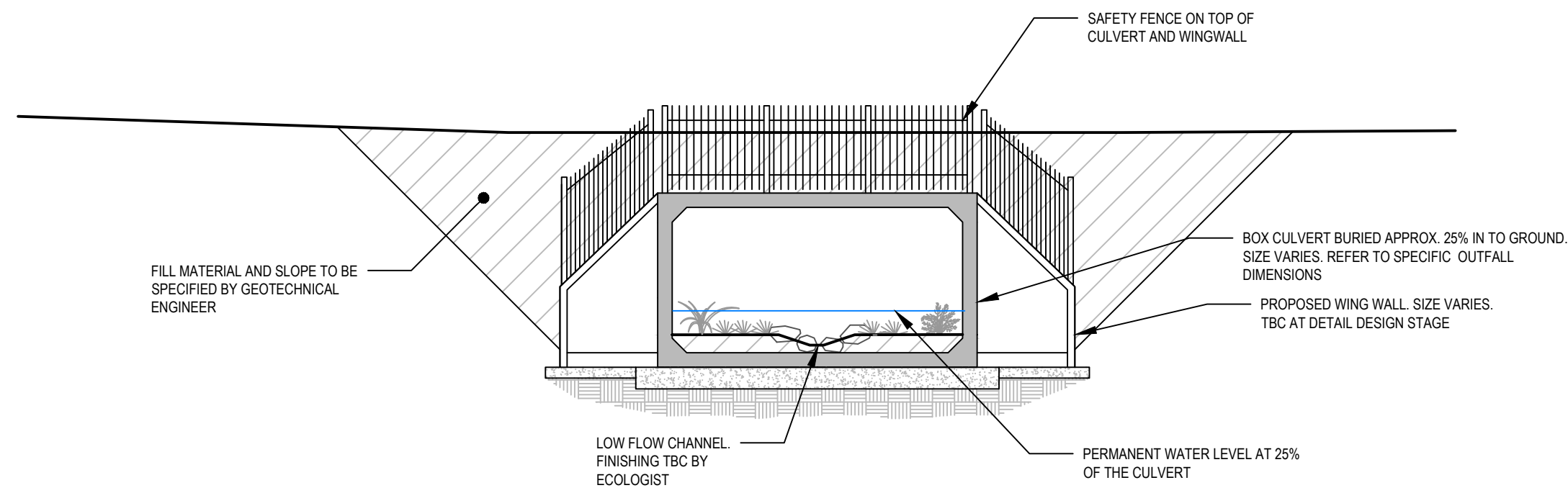


Project
**DEVELOPMENT OF
RIVERHEAD FOREST
FOR RANGITOOPUNI
DEVELOPMENTS LIMITED
PARTNERSHIP**

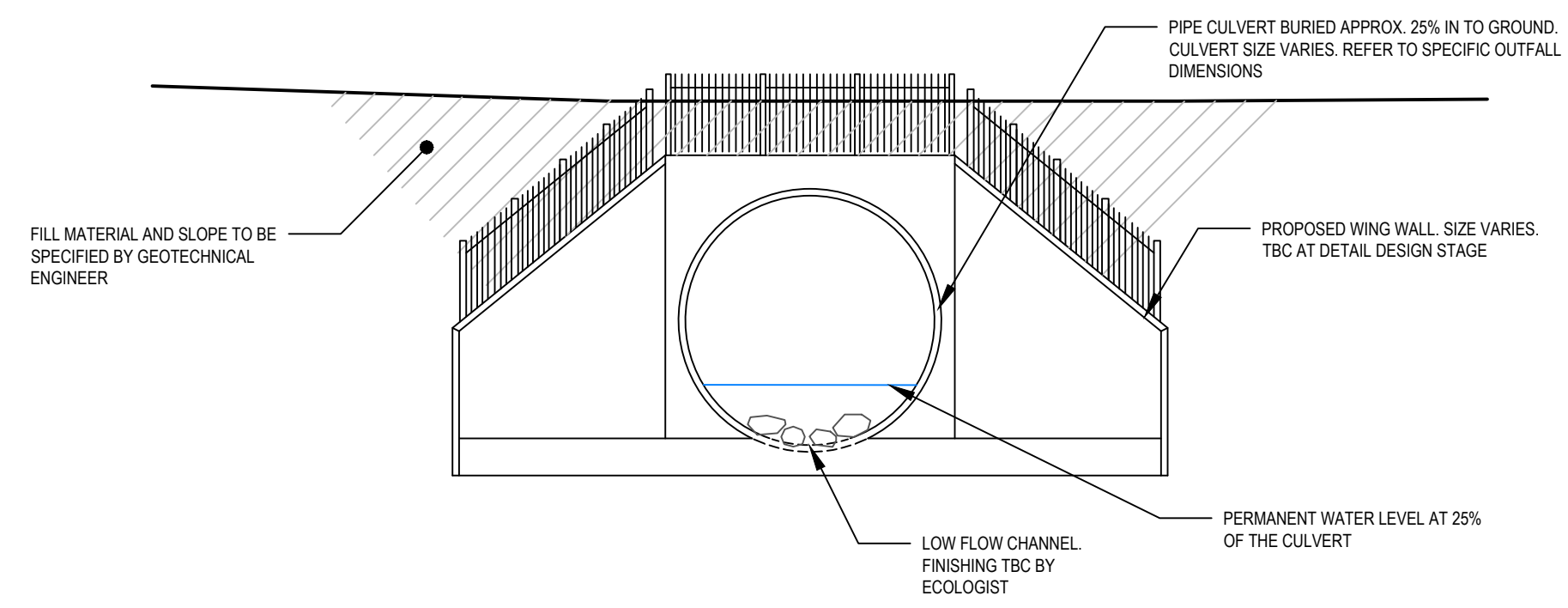
Title
**CULVERT 1-1
LONG SECTION**

Project no.	147007
Scale	1:250 @ A3
Cad file	147007-M-C481 TYPICAL CULVERT CROSS SECTION.DWG
Drawing no.	C484
Rev	A

RESOURCE CONSENT



TYPICAL BOX CULVERT CROSS SECTION
SCALE: NTS



TYPICAL CIRCULAR CULVERT CROSS SECTION
SCALE: NTS

A	RESOURCE CONSENT	AC	03/2025
Rev	Description	By	Date
		By	Date
Survey			
Design	AC		03/2025
Drawn	AC		03/2025
Checked	RW/KH		03/2025

M

Maven Associates
09 571 0050
info@maven.co.nz
www.maven.co.nz
5 Owens Road, Epsom
Auckland 1023

Project
**DEVELOPMENT OF
RIVERHEAD FOREST
FOR RANGITOOPUNI
DEVELOPMENTS LIMITED
PARTNERSHIP**

Title
**TYPICAL CULVERT
CROSS SECTION**

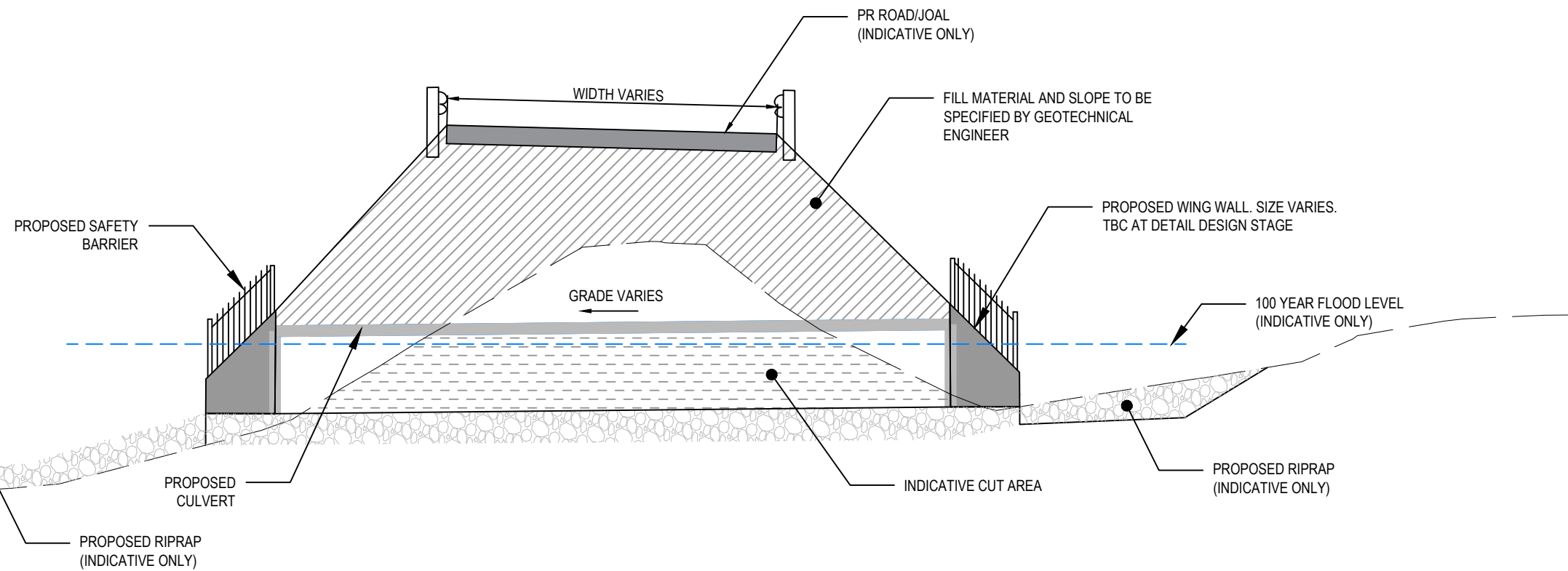
Project no.	147007		
Scale	NTS		
Cad file	147007-M-C490 CULVERT SECTIONS.DWG		
Drawing no.	C490	Rev	A

RESOURCE CONSENT

DATE: 4/05 FILE PATH: F:\Maven\PROJECTS\147007 RIVERHEAD FOREST\DWG\DRAWING PRODUCTION\147007\AC490 CULVERT SECTIONS.DWG

DATE: 4/05 FILE PATH: F:\Maven\PROJECTS\147007 RIVERHEAD FOREST\DWG\DRAWING PRODUCTION\147007\147007-M-C490 CULVERT SECTIONS.DWG

RESOURCE CONSENT



TYPICAL CULVERT LONG SECTION
SCALE: NTS

LEGEND
- - - - - EX GROUND
PR GROUND

A	RESOURCE CONSENT	AYC	03/2025
Rev	Description	By	Date
		By	Date
Survey			
Design	AYC		03/2025
Drawn	AYC		03/2025
Checked	RW/KH		03/2025

M

MAVEN

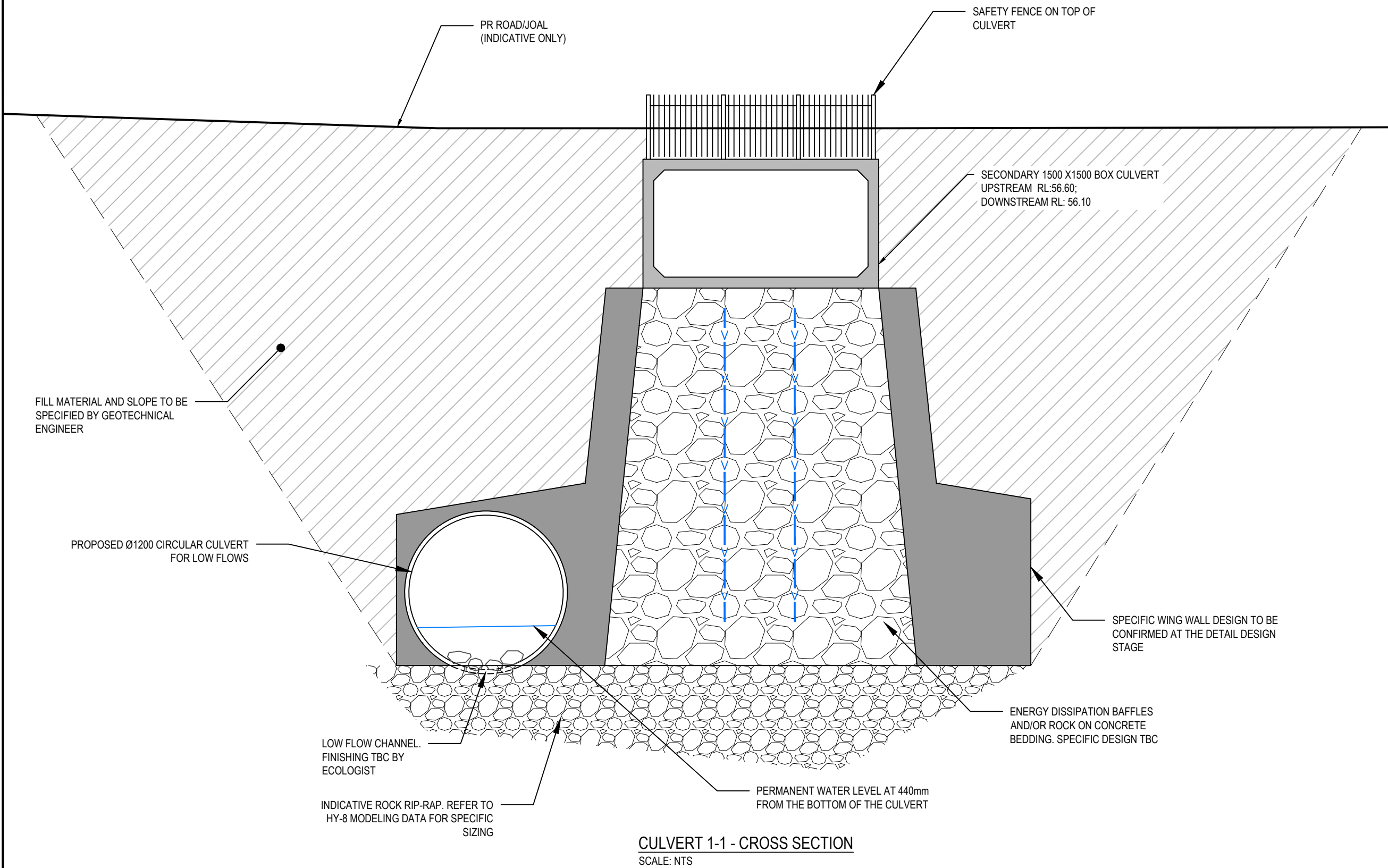
Maven Associates
09 571 0050
info@maven.co.nz
www.maven.co.nz
5 Owens Road, Epsom
Auckland 1023

Project
**DEVELOPMENT OF
RIVERHEAD FOREST
FOR RANGITOOPUNI
DEVELOPMENTS LIMITED
PARTNERSHIP**

Title
**TYPICAL CULVERT
LONG SECTION**

Project no.	147007		
Scale	NTS		
Cad file	147007-M-C490 CULVERT SECTIONS.DWG		
Drawing no.	C491	Rev	A

CULVERT RIP-RAP DETAILS REFER TO HY-8 MODELING DATA.
DETAIL DESIGN OF THE STABILISED BATTERS AND ENERGY DISSIPATION TO BE CONFIRMED AT THE DETAIL DESIGN STAGE



A	RESOURCE CONSENT	AC	03/2025
Rev	Description	By	Date
		By	Date
Survey			
Design	AYC		03/2025
Drawn	AYC		03/2025
Checked	RW/KH		03/2025

M

M A E N

Maven Associates

09 571 0050
info@maven.co.nz
www.maven.co.nz
5 Owens Road, Epsom
Auckland 1023

Project
DEVELOPMENT OF RIVERHEAD FOREST FOR RANGITOOPUNI DEVELOPMENTS LIMITED PARTNERSHIP

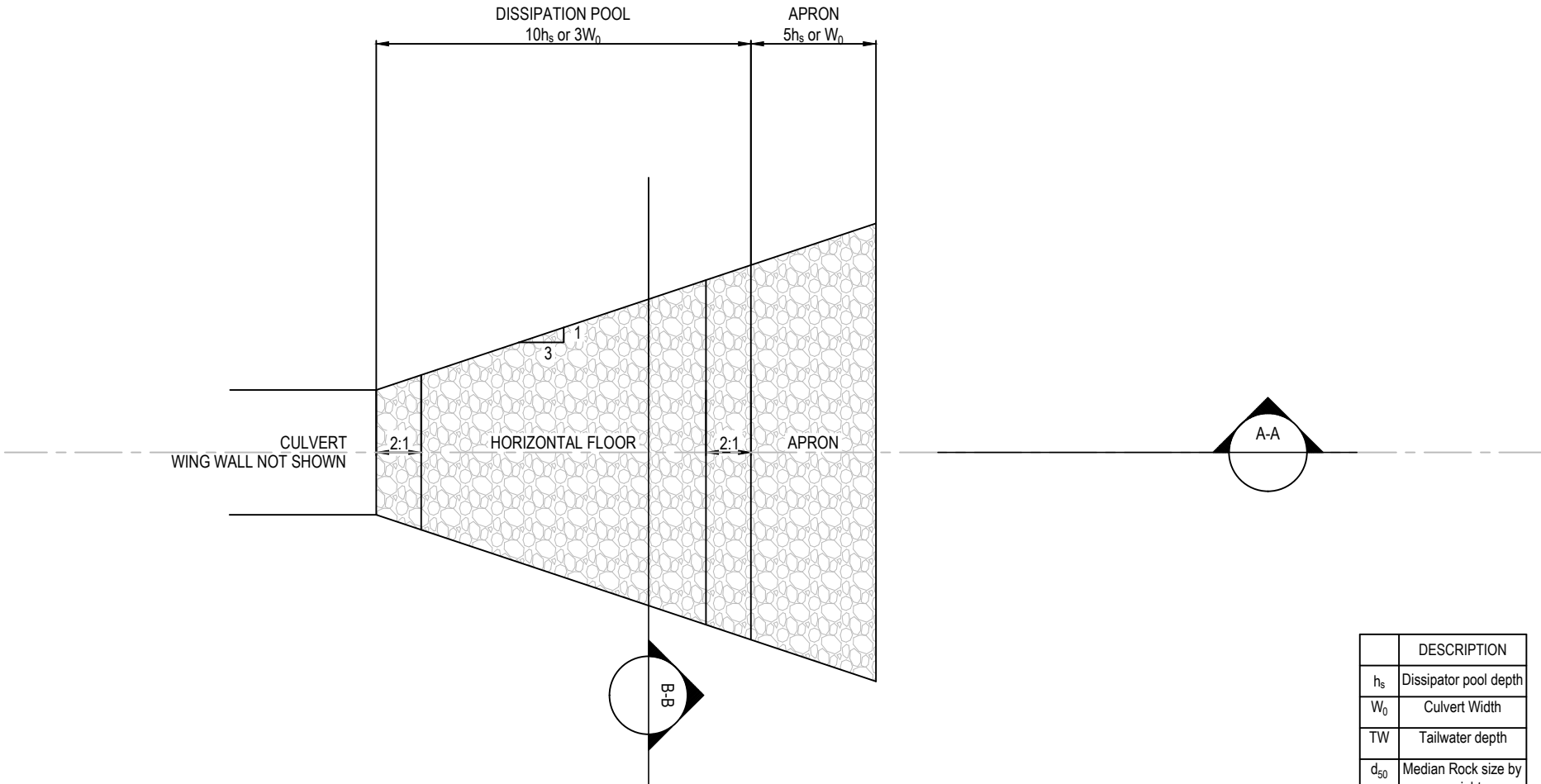
Title
CULVERT 1-1 LONG-SECTION

Project no.	147007
Scale	NTS
Cad file	147007-M-C490 CULVERT SECTIONS.DWG
Drawing no.	C492
Rev	A

RESOURCE CONSENT

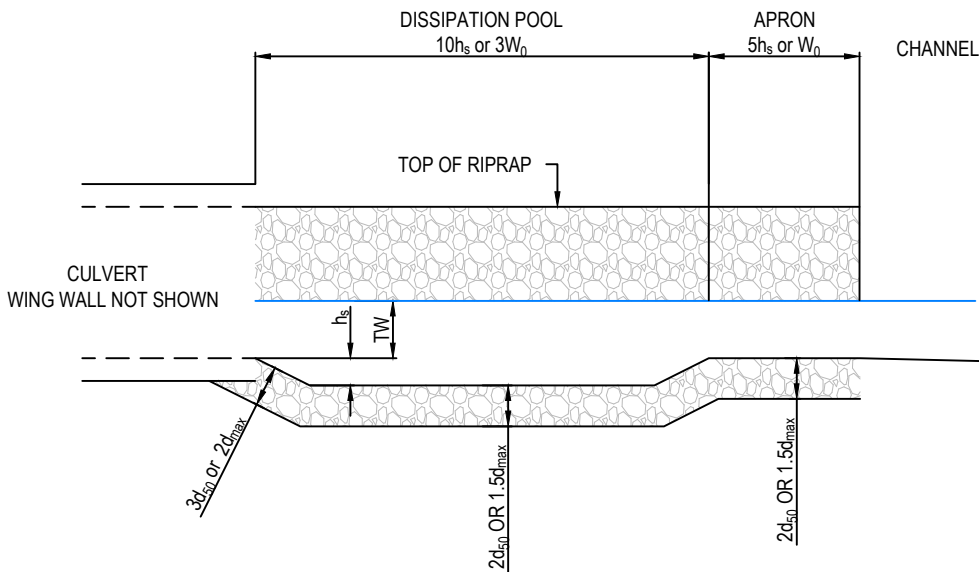
DATE: 4/05 FILE PATH: F:\Maven\PROJECTS\147007 RIVERHEAD FOREST\DRAWING PRODUCTION\147007\AC490 CULVERT SECTIONS.DWG

RESOURCE CONSENT

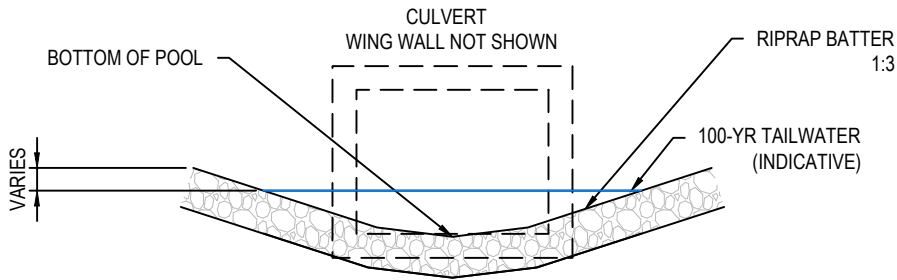


TYPICAL RIP-RAP PLAN VIEW
NTS

	DESCRIPTION
h_s	Dissipator pool depth
W_0	Culvert Width
TW	Tailwater depth
d_{50}	Median Rock size by weight
d_{max}	Max rock size by weight



TYPICAL RIP-RAP LONG SECTION A-A
NTS



TYPICAL RIP-RAP CROSS SECTION B-B
NTS

SPECIFIC CULVERT RIP-RAP DETAILS
REFER TO HY-8 MODELING DATA

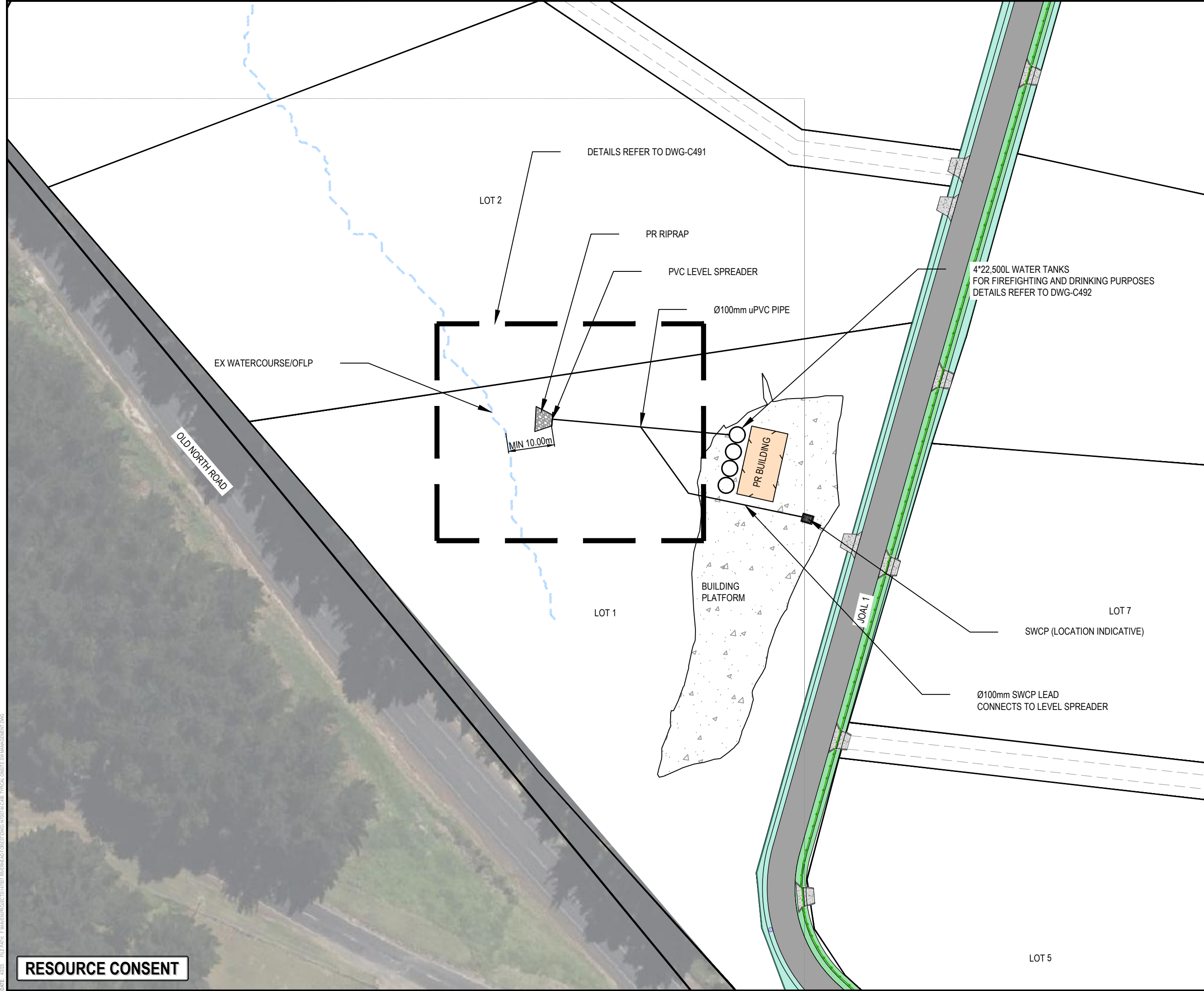
A	RESOURCE CONSENT	AC	03/2025
Rev	Description	By	Date
Survey			
Design	AYC		03/2025
Drawn	AYC		03/2025
Checked	RW/KH		03/2025



Project
**DEVELOPMENT OF
RIVERHEAD FOREST
FOR RANGITOOPUNI
DEVELOPMENTS LIMITED
PARTNERSHIP**

Title
**TYPICAL
RIP-RAP DETAILS**

Project no.	147007
Scale	AS SHOWN @ A3
Cad file	147007-M-C490 CULVERT SECTIONS.DWG
Drawing no.	C493
Rev	A



LEGEND	
	PR BDY
	EX STREAM
	PR BUILDING
	BUILDING PLATFORM

A	RC	AYC	02/2025
Rev	Description	By	Date
		By	Date
Survey			
Design	AYC		02/2025
Drawn	AYC		02/2025
Checked	RW/KH		03/2025



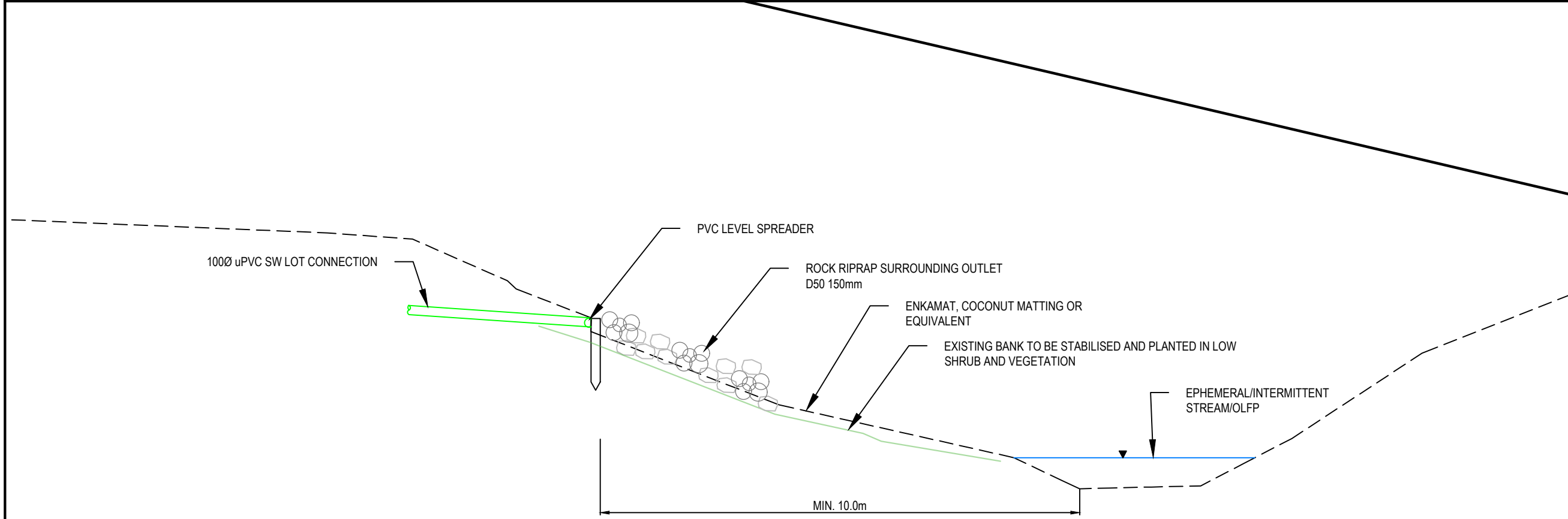
Maven Associates
09 571 0050
info@maven.co.nz
www.maven.co.nz
5 Owens Road, Epsom
Auckland 1023

Project
**DEVELOPMENT OF
RIVERHEAD FOREST
FOR RANGITOOPUNI
DEVELOPMENTS LIMITED
PARTNERSHIP**

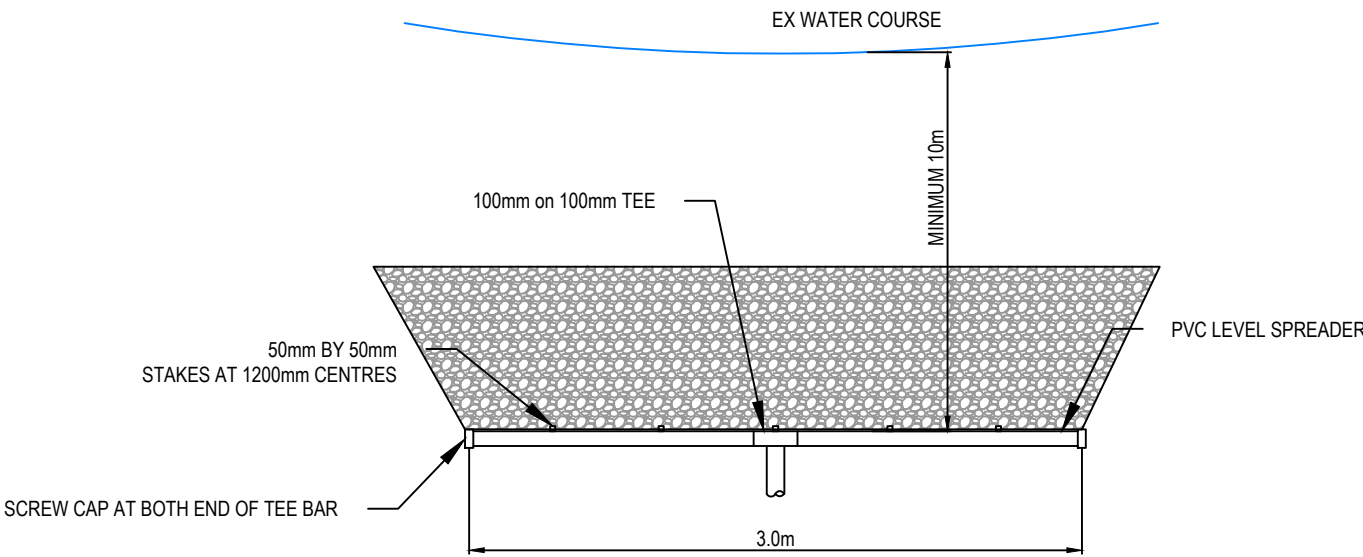
Title
**TYPICAL ONSITE
STORMWATER
MANAGEMENT**

Project no.	147007		
Scale	1:750 @ A3		
Cad file	147007-M-C495 TYPICAL ONSITE SW MANAGEMENT.DWG		
Drawing no.	C495	Rev	A

DATE: 4/2/25 FILE PATH: F:\MAVEN\PROJECTS\147007 RIVERHEAD FOREST\DWG\147007-M-C496 TYPICAL ONSITE SW MANAGEMENT.DWG



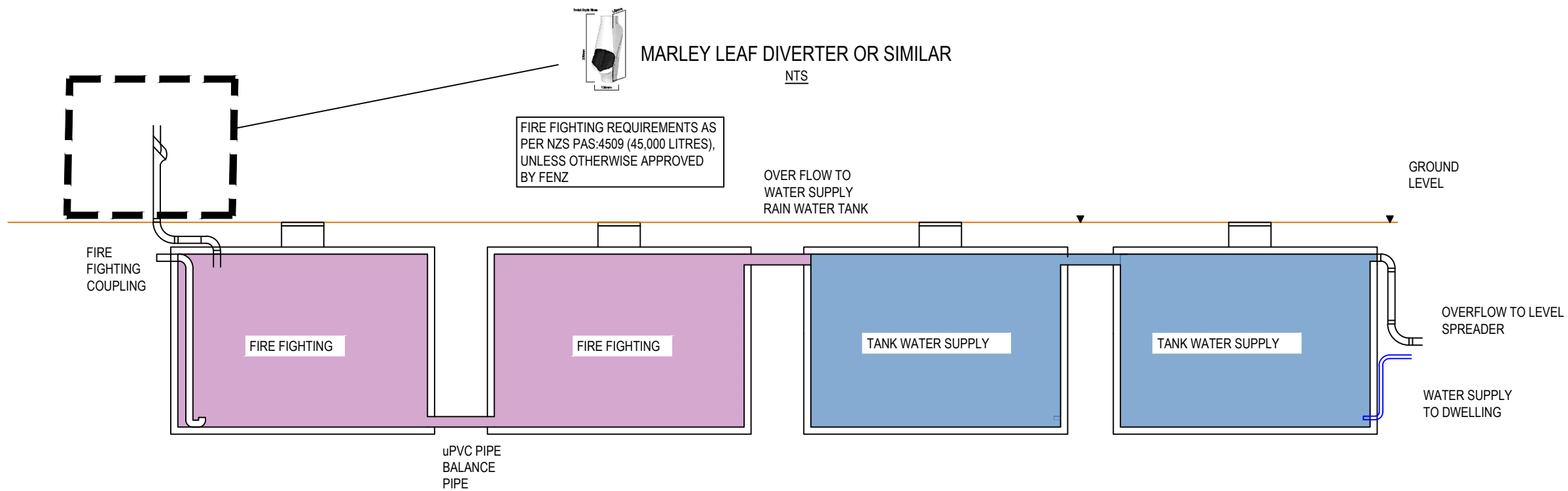
LEVEL SPREADER SECTION
NTS



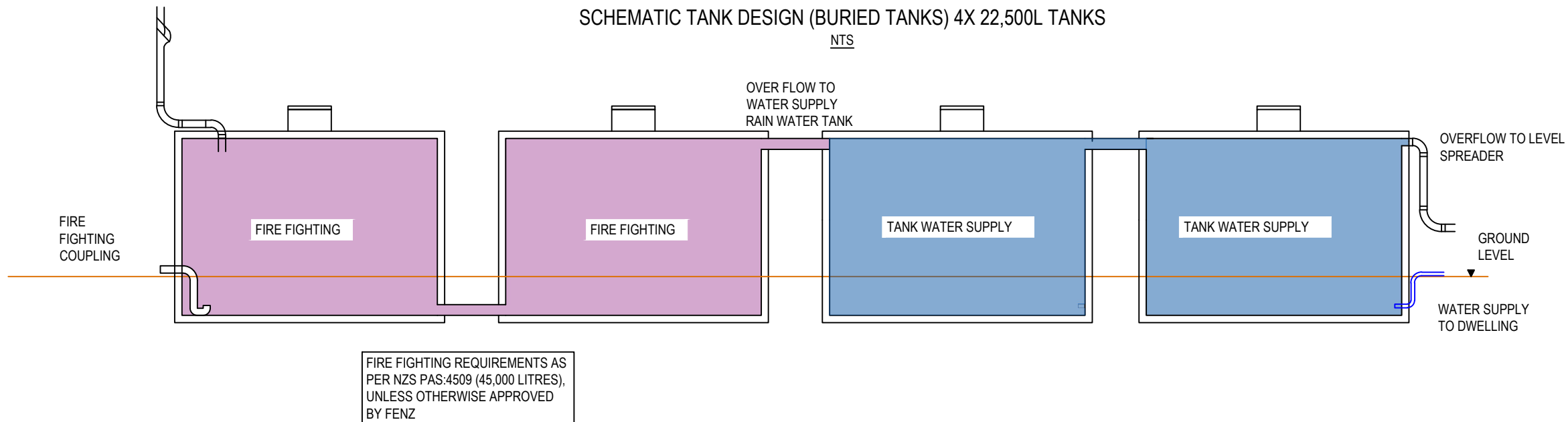
LEVEL SPREADER PLAN
NTS

A	RESOURCE CONSENT	AYC	02/2025
Rev	Description	By	Date
		By	Date
Survey			
Design	AYC		02/2025
Drawn	AYC		02/2025
Checked	RW/KH		03/2025
<div><div><div>M</div><div>MAVEN</div></div><div><div>Maven Associates</div><div>09 571 0050</div><div>info@maven.co.nz</div><div>www.maven.co.nz</div><div>5 Owens Road, Epsom</div><div>Auckland 1023</div></div></div>			
Project DEVELOPMENT OF RIVERHEAD FOREST FOR RANGITOOPUNI DEVELOPMENTS LIMITED PARTNERSHIP			
Title PROPOSED LEVEL SPREADER DETAILS			
Project no.	147007		
Scale	N.T.S		
Cad file	147007-M-C495 TYPICAL ONSITE SW MANAGEMENT.DWG		
Drawing no.	C496	Rev	A

DATE: 4/2/25 FILE PATH: F:\Maven\PROJECTS\147007 RIVERHEAD FOREST\DWG\147007-M-C495 TYPICAL ONSITE SW MANAGEMENT.DWG



SCHEMATIC TANK DESIGN (BURIED TANKS) 4X 22,500L TANKS
NTS



SCHEMATIC TANK DESIGN (HALF BURIED TANKS) 3 X 22,500L TANKS
NTS

RESOURCE CONSENT

A	RC	AYC	02/2025
Rev	Description	By	Date
		By	Date
Survey			
Design	AYC		02/2025
Drawn	AYC		02/2025
Checked	RW/KH		03/2025

M

A

E

N

Maven Associates

09 571 0050

info@maven.co.nz

www.maven.co.nz

5 Owens Road, Epsom

Auckland 1023

Project
**DEVELOPMENT OF
RIVERHEAD FOREST
FOR RANGITOOPUNI
DEVELOPMENTS LIMITED
PARTNERSHIP**

Title
**TYPICAL
WATER TANK
DETAILS**

Project no.	147007		
Scale	N.T.S		
Cad file	147007-M-C495 TYPICAL ONSITE SW MANAGEMENT.DWG		
Drawing no.	C497	Rev	A