

D.03 – Hauraki District Council Conditions

Attachment 1 – Waihi North Project Areas

Attachment 2 – Waihi Township Area Map

Attachment 3 – Vibration Monitoring Sites

Attachment 4 - Visual Concepts of Area 2 and Area 5 Buildings

Attachment 5 – Waihi North Project Site Selection Protocol

Attachment 6 – Frog Hygiene and Handling Protocols

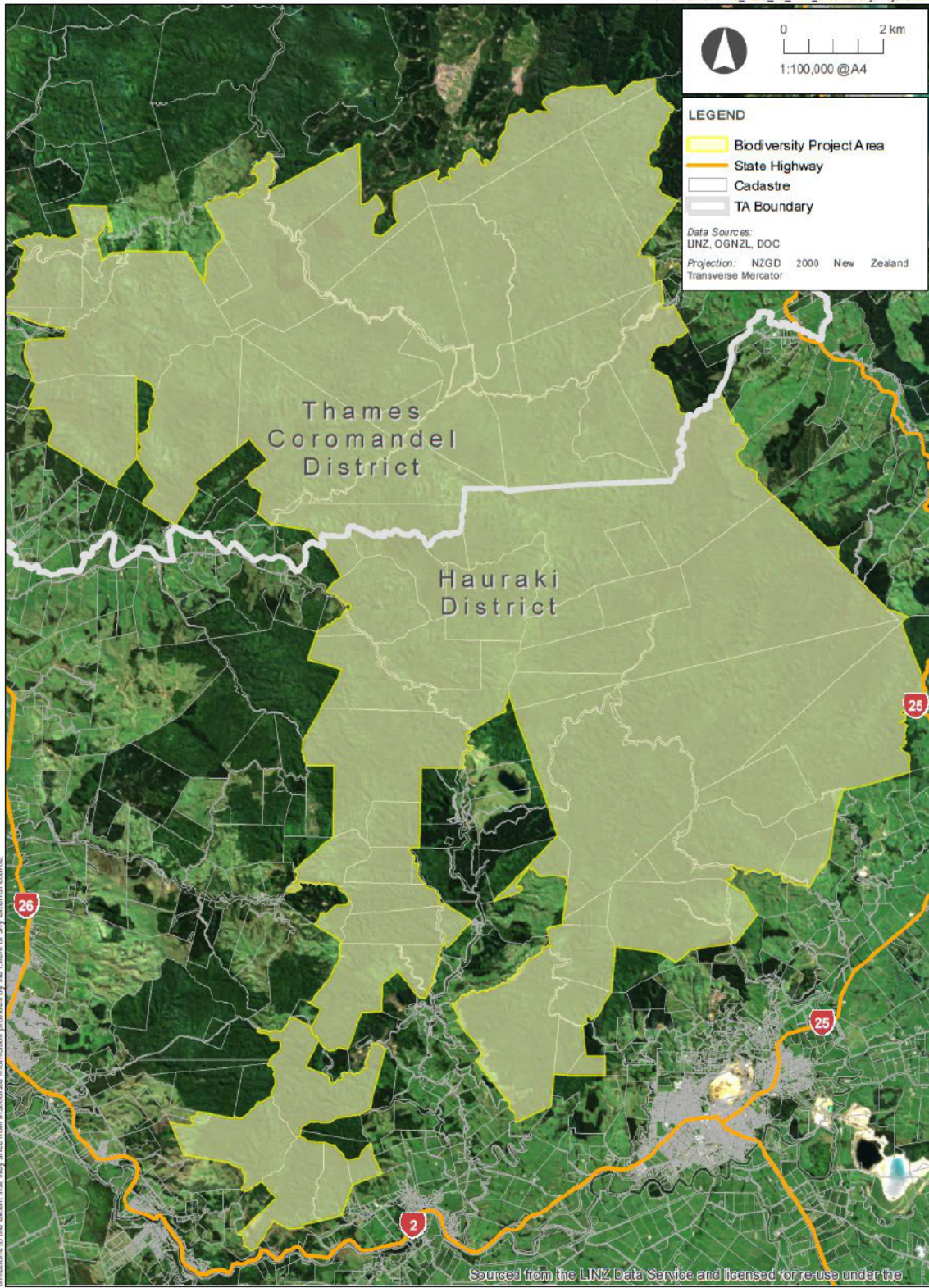
Attachment 7 – Wharekirauponga Animal Pest Management Area

Attachment 8 - Proposed Integrated Mitigation Planting Stages Maps

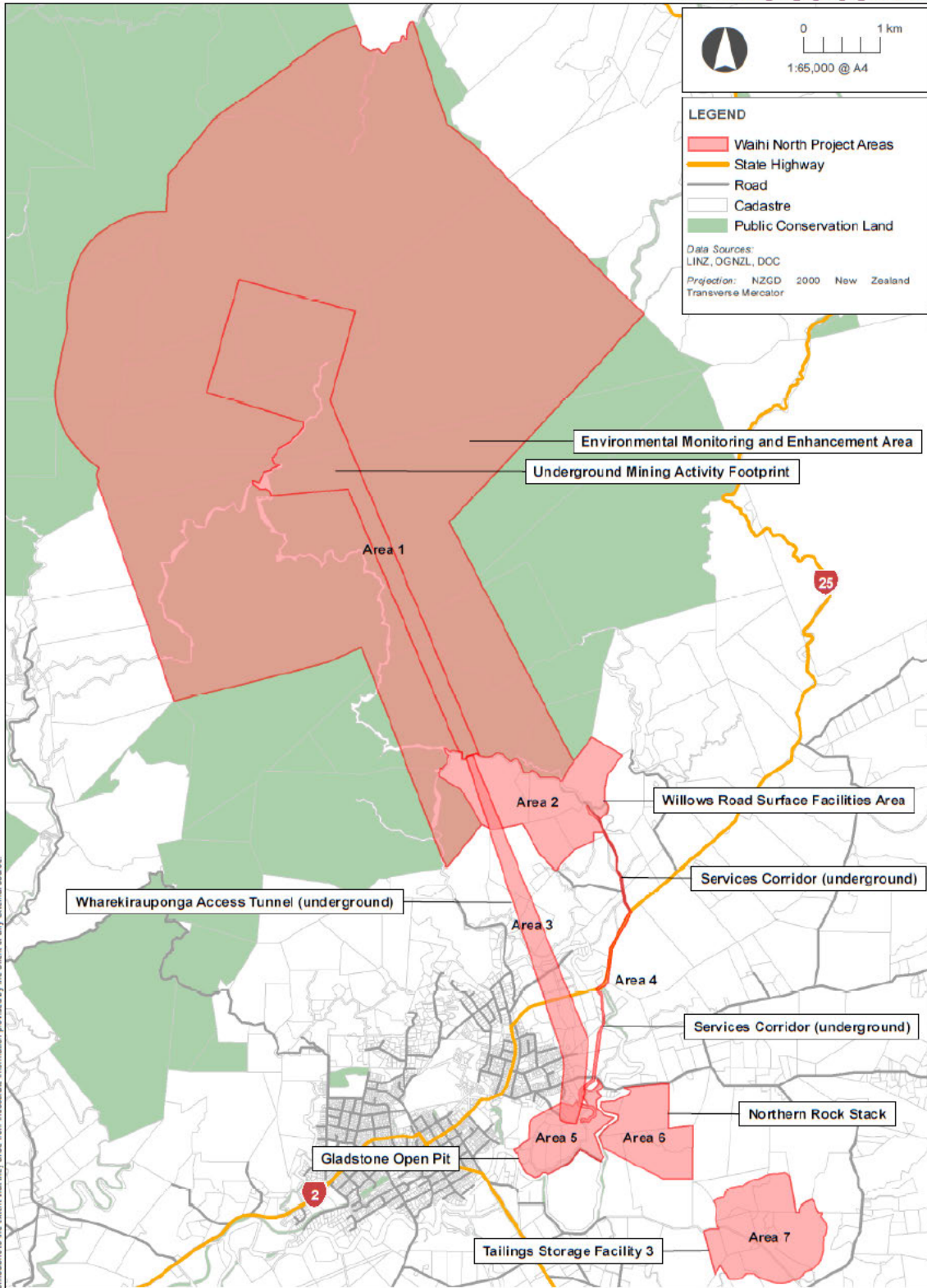
Attachment 9 - Proposed Integrated Mitigation Planting Details

ATTACHMENT 1 – WAIHI NORTH PROJECT AREAS

This plan has been prepared by Boffa Miskell Limited on the specific instructions of our Client. It is solely for our Client's use in accordance with the agreed scope of work. Any use or reliance by a third party is at that party's own risk. Where information has been supplied by the Client or obtained from other external sources, it has been assumed that it is accurate. No liability or responsibility is accepted by Boffa Miskell Limited for any errors or omissions to the extent that they arise from inaccurate information provided by the Client or any external source.



This plan has been prepared by Bora Miskell Limited on the specific instructions of our Client. It is solely for our Client's use. In accordance with the agreed scope of work, any use or reliance by a third party is at their own risk. Where information has been supplied by the Client or obtained from other external sources, it has been assumed that it is accurate. No liability or responsibility is accepted by Bora Miskell Limited for any errors or omissions to the extent that they arise from inaccurate information provided by the Client or any external source.



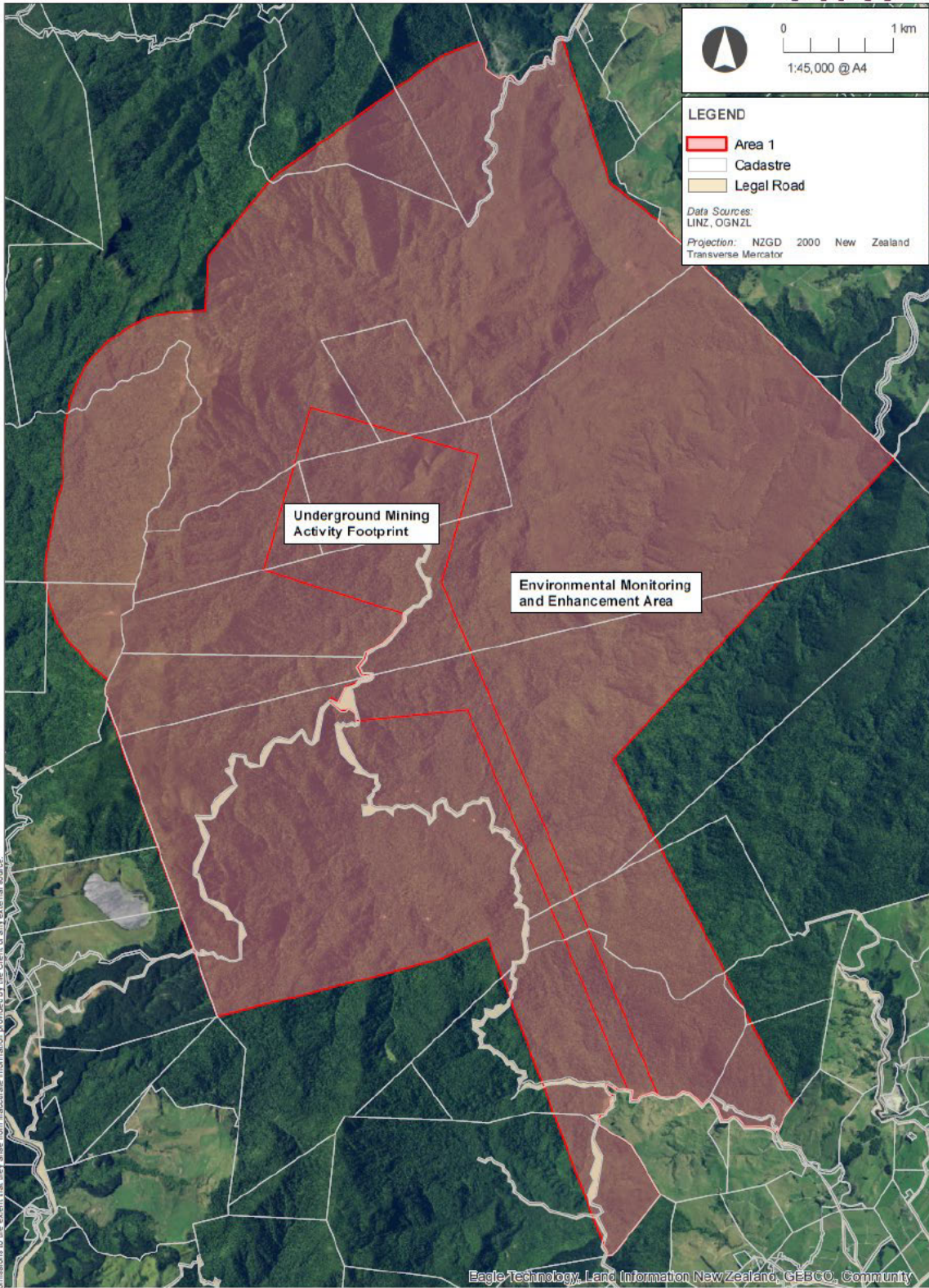
Overview of the Waihi North Project

Map 1



Date: 13 February 2025 | Revision: 0

Project Manager: [Redacted] Drawn: BMc | Checked: PSm



This plan has been prepared by Birta Miskel Limited on the specific instructions of our Client. It is solely for our Client's use in accordance with the agreed scope of work. Any use or reliance by a third party is at that party's own risk. Where information has been supplied by the Client or obtained from other external sources, it has been assumed that it is accurate. No liability or responsibility is accepted by Birta Miskel Limited for any errors or omissions to the extent that they arise from inaccurate information provided by the Client or any external source.

Eagle Technology, Land Information New Zealand, GEBCO, Community



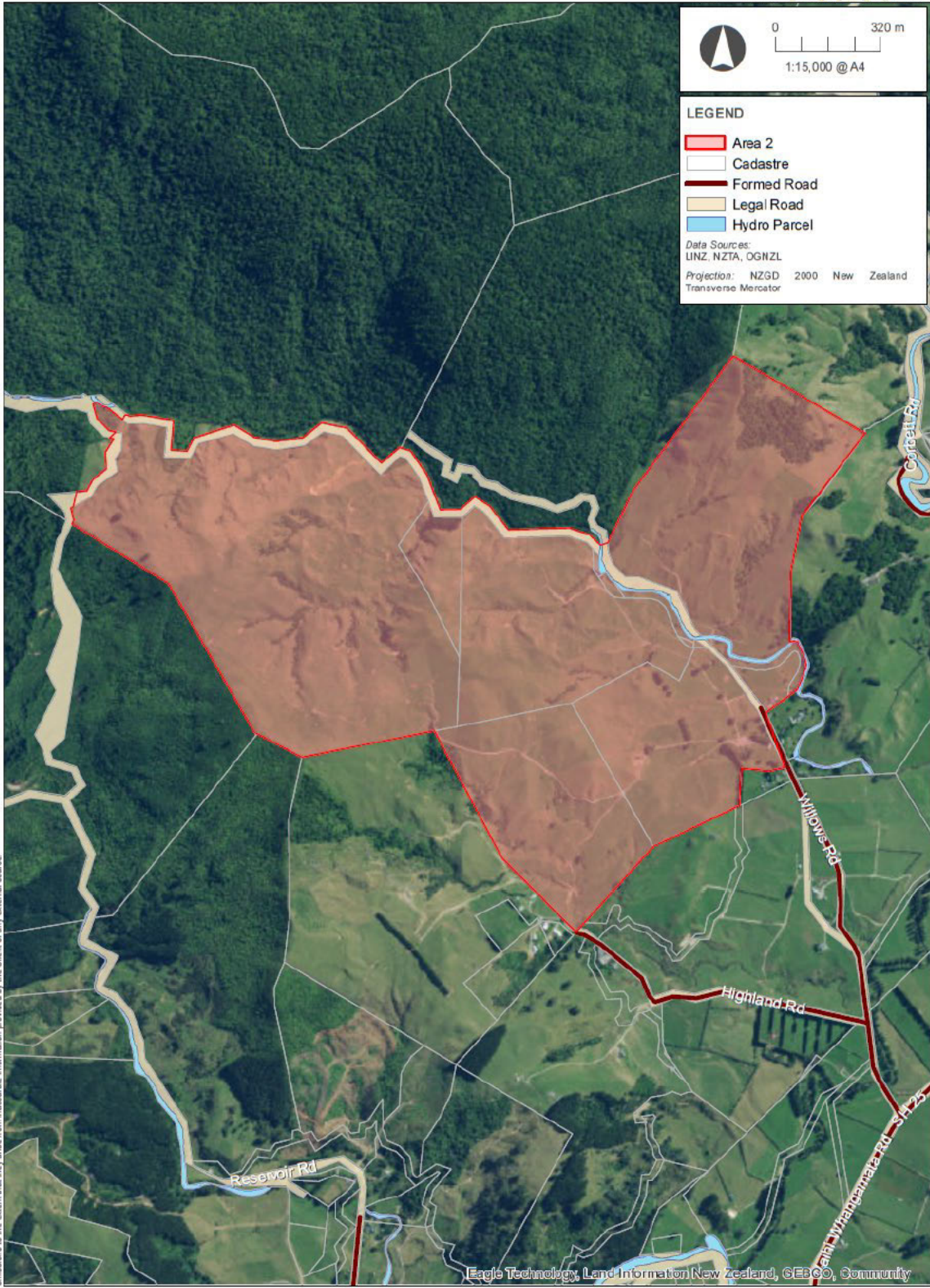
Overview of Area 1

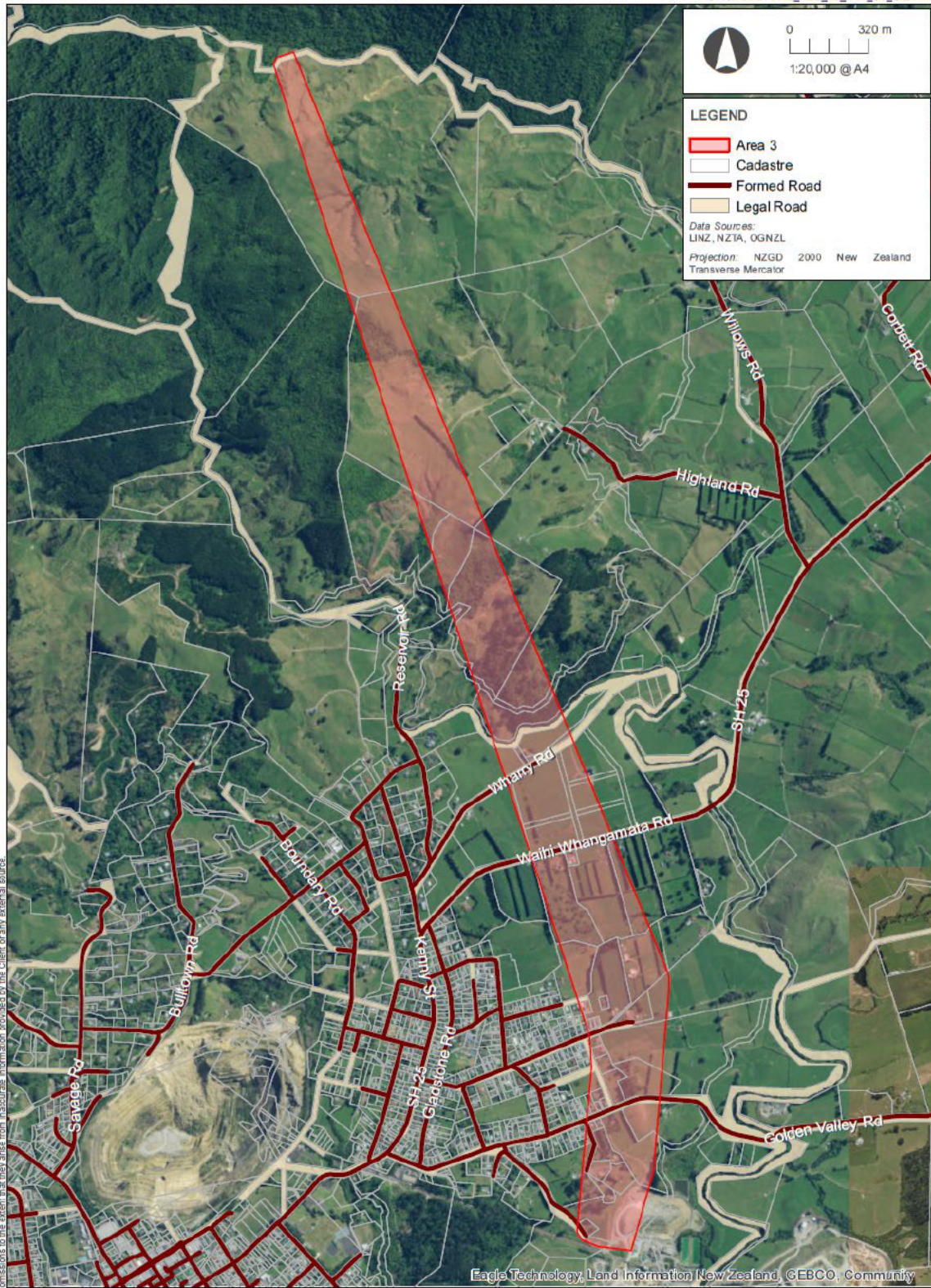
WNP 1

Date: 24 February 2025 | Revision: 0

Project Manager: [REDACTED] | Drawn: BMc | Checked: PSm

This plan has been prepared by Boffa Miskell Limited on the specific instructions of our Client. It is solely for our Client's use in accordance with the agreed scope of work. Any use or reliance by a third party is at that party's own risk. Where information has been supplied by the Client or obtained from other external sources, it has been assumed that it is accurate. No liability or responsibility is accepted by Boffa Miskell Limited for any errors or omissions to the extent that they arise from inaccurate information provided by the Client or any external source.





This plan has been prepared by Boffa Miskell Limited on the specific instructions of our Client. It is solely for our Client's use in accordance with the agreed scope of work. Any use or reliance by a third party is at that party's own risk. Where information has been supplied by the Client or obtained from other external sources, it has been assumed that it is accurate. No liability or responsibility is accepted by Boffa Miskell Limited for any errors or omissions to the extent that they arise from inaccurate information provided by the Client or any external source.



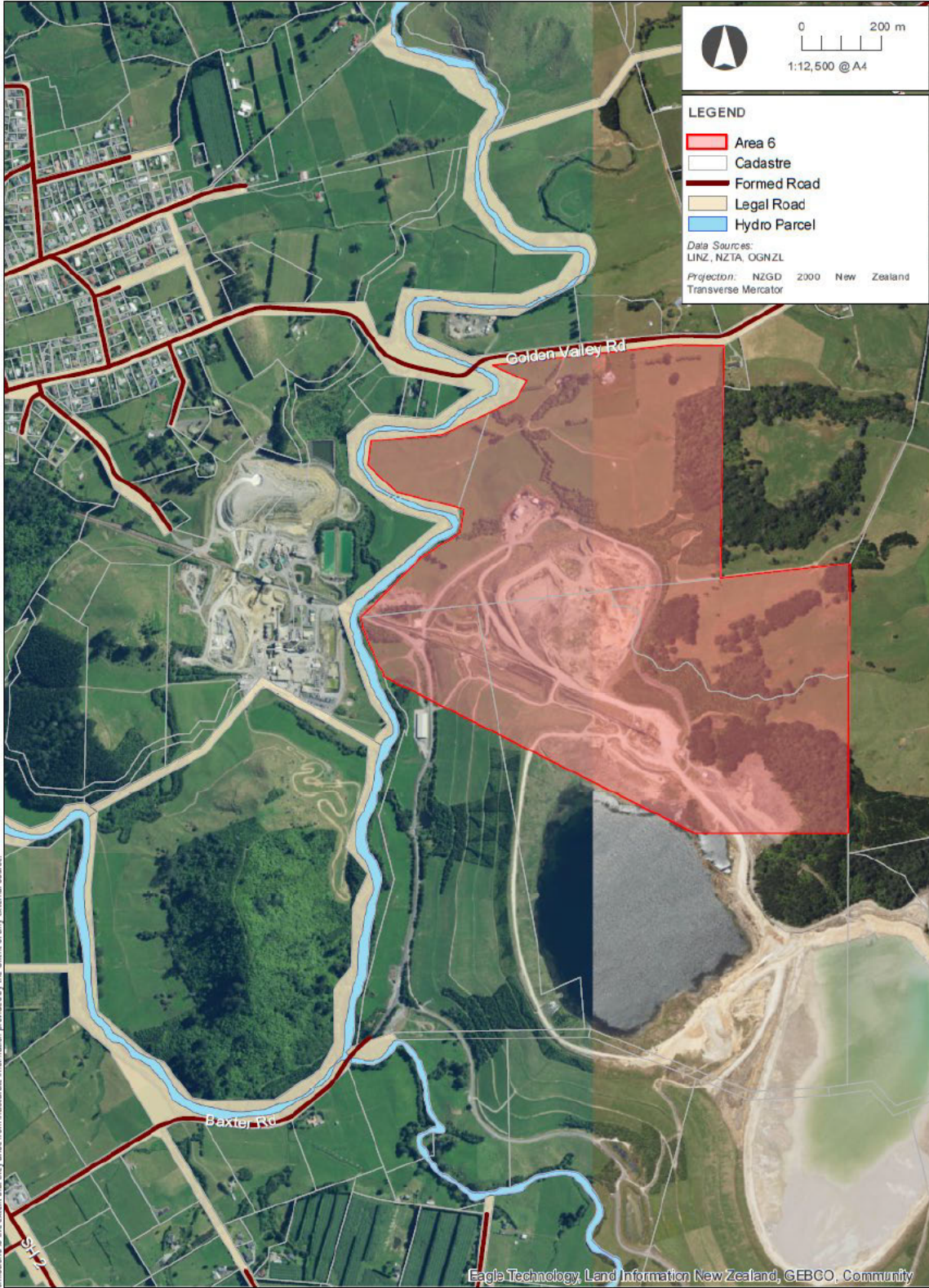
This plan has been prepared by BMT Miskell Limited on the specific instructions of our Client. It is solely for our Client's use in accordance with the agreed scope of work. Any use or reliance by a third party is at that party's own risk. Where information has been supplied by the client or obtained from other external sources, it has been assumed that it is accurate. No liability or responsibility is accepted by BMT Miskell Limited for any errors or omissions to the extent that they arise from inaccurate information provided by the Client or any external source.



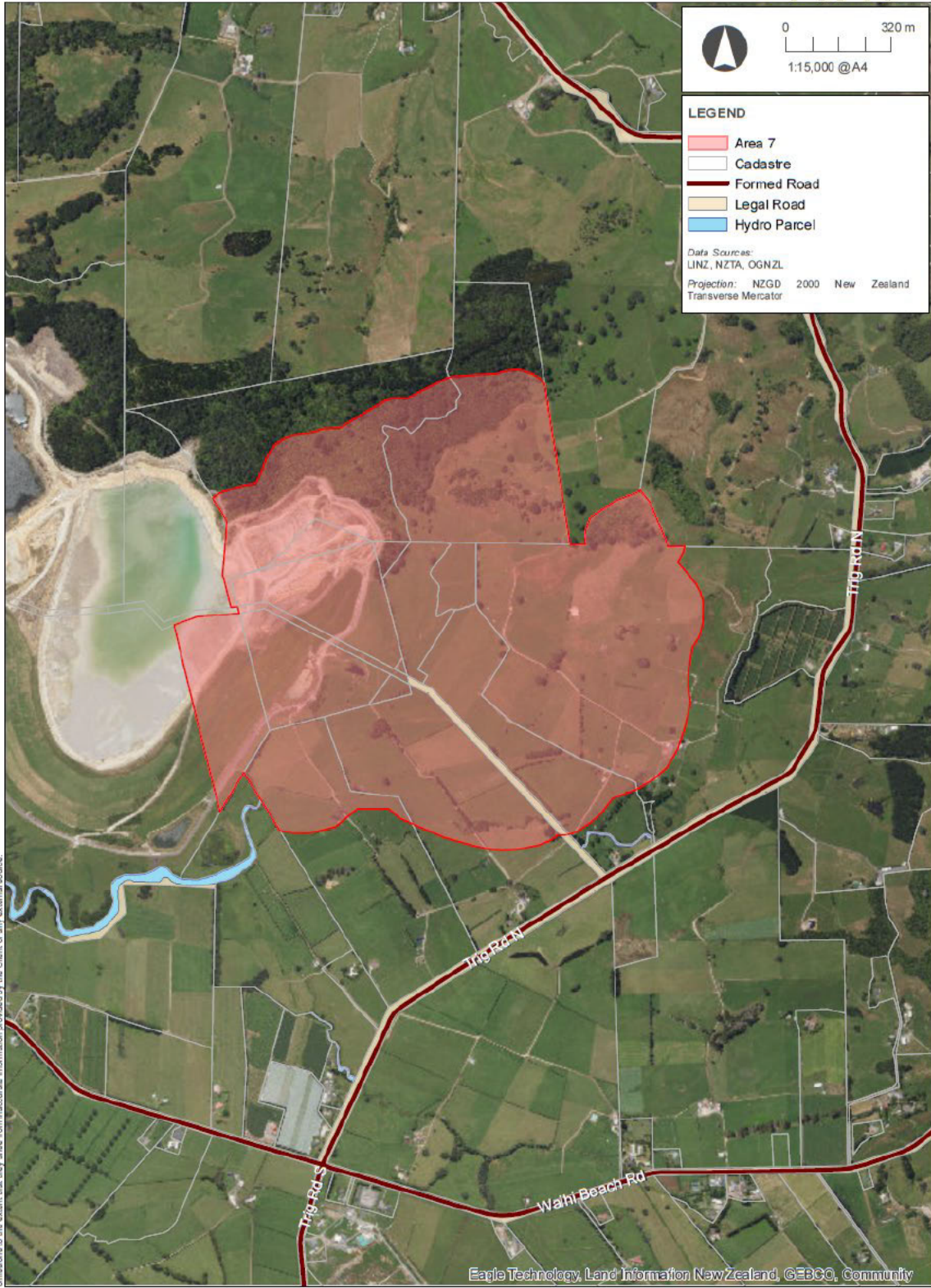
Overview of Area 5

WNP5

Date: 15 January 2025 | Revision: 0
Project Manager: [Redacted] | Drawn: BMC | Checked: PSM



This plan has been prepared by Bora Miskell Limited on the specific instructions of our Client. It is solely for our Client's use in accordance with the agreed scope of work. Any use or reliance by a third party is at that party's own risk. Where information has been supplied by the Client or obtained from other external sources, it has been assumed that it is accurate. No liability or responsibility is accepted by Bora Miskell Limited for any errors or omissions to the extent that they arise from inaccurate information provided by the Client or any external source.



This plan has been prepared by Boffa Miskell Limited on the specific instructions of our Client. It is solely for our Client's use in accordance with the agreed scope of work. Any use or reliance by a third party is at that party's own risk. Where information has been supplied by the Client or obtained from other external sources, it has been assumed that it is accurate. No liability or responsibility is accepted by Boffa Miskell Limited for any errors or omissions to this extent but they arise from inaccurate information provided by the Client or any external source.



Overview of Area 7

WNP7

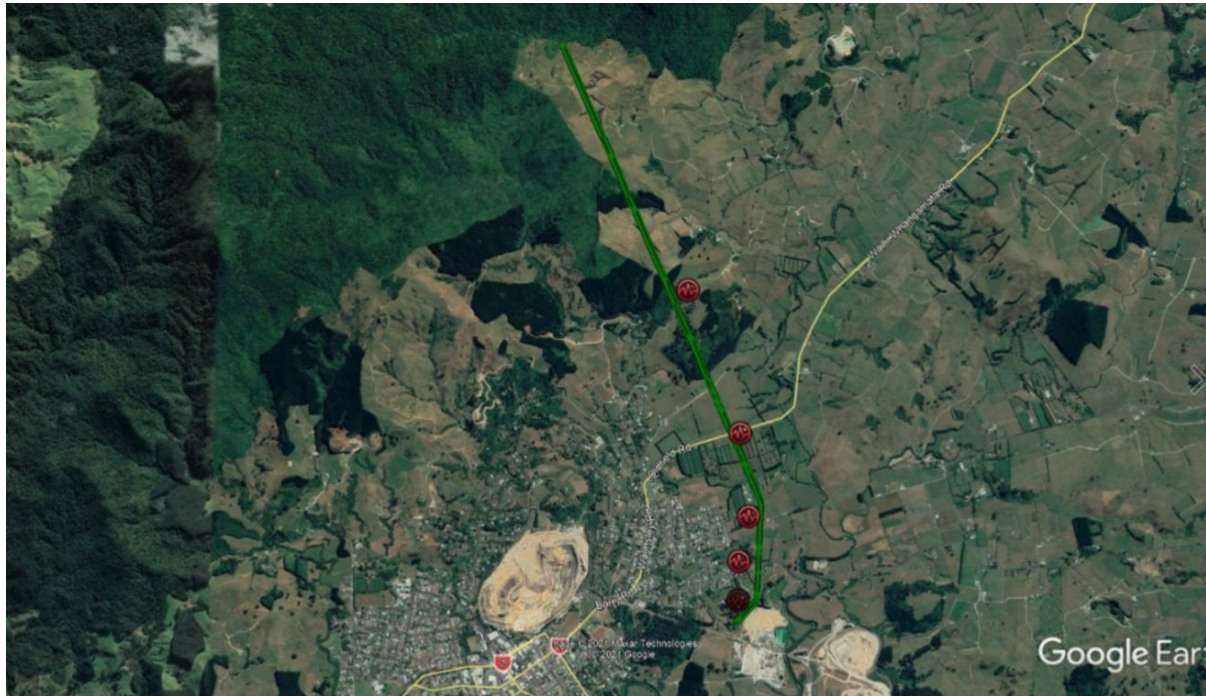
Date: 13 February 2025 | Revision: 0
Project Manager: [Redacted] | Drawn: BMC | Checked: PSM

ATTACHMENT 2 – WAIHI TOWNSHIP AREA MAP



Figure 1: Waihi Township Area No Fly Zone

ATTACHMENT 3 – VIBRATION MONITORING SITES



Vibration Monitoring Sites for the Wharekirauponga Access Tunnel



Vibration Monitoring Sites for the Gladstone Open Pit



Vibration Monitoring Sites for the Borrow Pits