

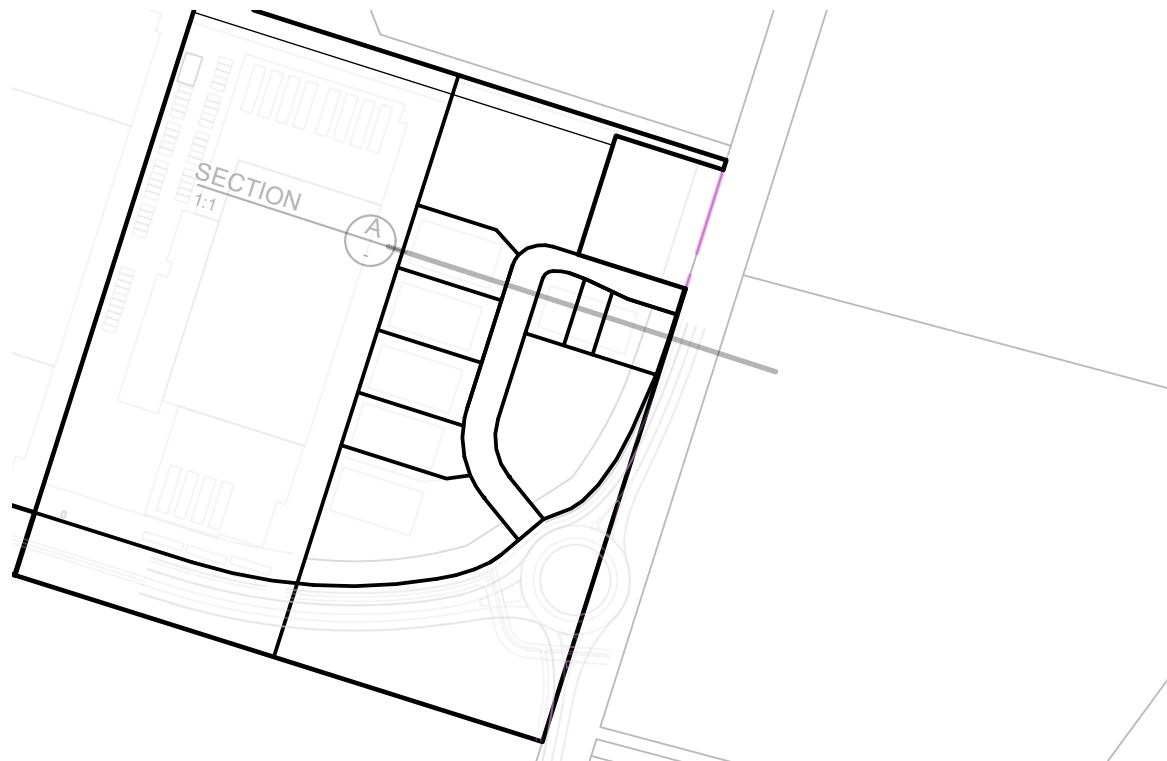
DATUM = 49.00

DESIGN LEVEL		61.60	61.60	61.55	61.80	61.80	63.40				
GROUND LEVEL	59.86	60.92	61.84	62.68	63.36	63.97	64.23				
CHAINAGES	0.0	20.0	40.0	60.0	80.0	100.0	120.0	140.0	160.0	161.5	

LONGITUDINAL SECTION SURF INDUSTRY PRECINCT

SCALE HORIZ=1:500 @ A1

VERT=1:500 @ A1



NOTES

1. Auckland Surf park is designed and modelled in the Auckland 1946 Datum. Please refer to the McKenzie and Co memo dated 9 August 20214
2. The difference in height between the Auckland 1946 Datum and the NZVD2016 Datum is estimated to be 286mm at the project location.
 - a. For the purposes of this approach, the height difference has been taken to the nearest 100mm, so the height difference used on this plan is 300mm.
3. Flight Path height restriction has been modelled according to Chapter D23 of the Auckland Unitary Plan
 - a. The AUP D23 defines the end of runway level at RL62.70 (NZVD2016). This is RL 63.00 in the Auckland 1946 Datum.
4. 2016 LIDAR survey data indicates that the end of the runway at RL 64.50 (NZVD2016)
 - a. We have converted this level to RL64.80 (Auckland 1946), and shown both these levels on this section.

CLIENT:

AW HOLDINGS 2021
LIMITED

PROJECT:

AUCKLAND SURF PARK
1350 DAIRY FLAT HIGHWAY
DAIRY FLAT, AUCKLAND

TITLE:

FLIGHT PATH
SECTION

PURPOSE OF ISSUE:

FOR DISCUSSION

SCALE:

DO NOT SCALE

DRAWING NO:

3325-2-SK06

REV:

A

A FIRST ISSUE
REV DESCRIPTION DRN BY CHK BY APP BY DATE