

Delmore

VINEWAY LIMITED | TERRA STUDIO

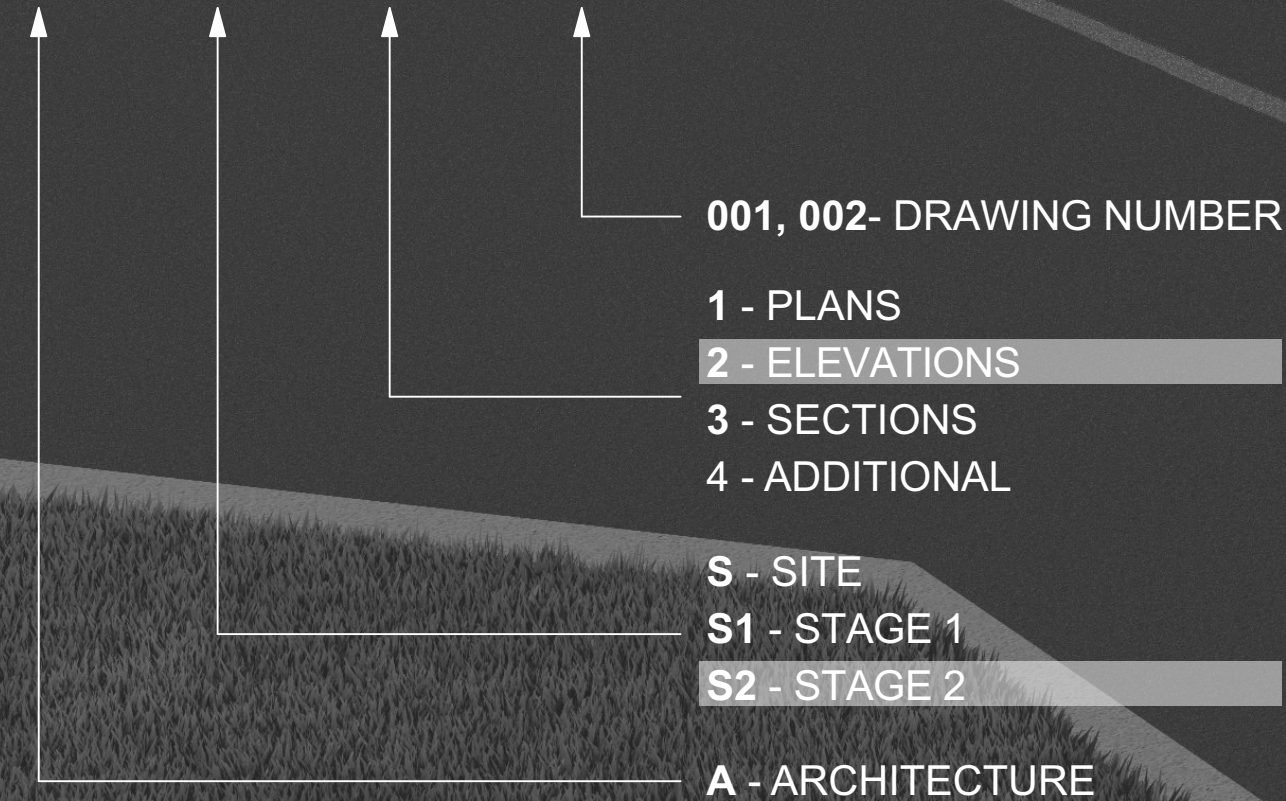
STAGE 2 ELEVATIONS



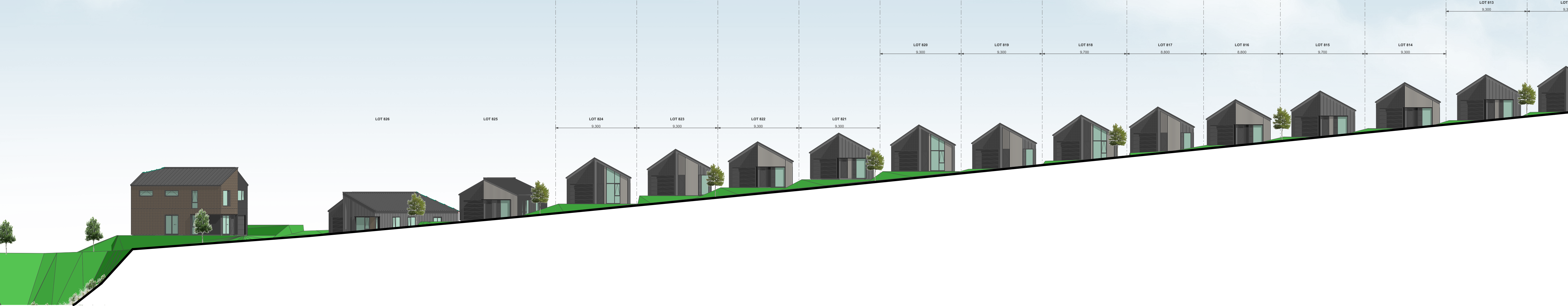
DRAWING REGISTER

STAGE 2 ELEVATIONS

A - S - 1 - 01



| STAGE 2 ELEVATIONS INDEX | | | | | |
|--------------------------|--|--------|-----------|--|--------|
| LAYOUT ID | LAYOUT NAME | REV ID | LAYOUT ID | LAYOUT NAME | REV ID |
| A-S2-2-01 | ELEVATIONS - STAGE 2A-1 / LOTS 740-756 | B | A-S2-2-45 | ELEVATIONS - STAGE 2B-3 / PARK | B |
| A-S2-2-02 | ELEVATIONS - STAGE 2A-1 / LOTS 740-756 | B | A-S2-2-46 | ELEVATIONS - STAGE 2B-3 / LOTS 1128-1137 | B |
| A-S2-2-03 | ELEVATIONS - STAGE 2A-1 / LOTS 717-739 | B | A-S2-2-47 | ELEVATIONS - STAGE 2B-3 / LOTS 1024-1038 | B |
| A-S2-2-04 | ELEVATIONS - STAGE 2A-1 / LOTS 717-739 | B | A-S2-2-48 | ELEVATIONS - STAGE 2B-3 / BOOKEND JOALS | B |
| A-S2-2-05 | ELEVATIONS - STAGE 2A-1 / LOTS 641-655 | B | A-S2-2-49 | ELEVATIONS - STAGE 2B-3 / BOOKEND JOALS | B |
| A-S2-2-06 | ELEVATIONS - STAGE 2A-1 / LOTS 641-655 | B | A-S2-2-50 | ELEVATIONS - STAGE 2B-3 / LOTS 1113-1119 | B |
| A-S2-2-07 | ELEVATIONS - STAGE 2A-1 / LOTS 668-672 | B | A-S2-2-51 | ELEVATIONS - STAGE 2B-3 / LOTS 1108-1112 | B |
| A-S2-2-08 | ELEVATIONS - STAGE 2A-1 / LOTS 668-672 | B | A-S2-2-52 | ELEVATIONS - STAGE 2B-3 / LOTS 1103-1107 | B |
| A-S2-2-09 | ELEVATIONS - STAGE 2A-1 / LOTS 660-664 | B | A-S2-2-53 | ELEVATIONS - STAGE 2B-3 / LOTS 1092-1096 | B |
| A-S2-2-10 | ELEVATIONS - STAGE 2A-1 / LOTS 604-610 | B | A-S2-2-54 | ELEVATIONS - STAGE 2B-3 / LOTS 1087-1091 | B |
| A-S2-2-11 | ELEVATIONS - STAGE 2A-1 / LOTS 611-636 | B | A-S2-2-55 | ELEVATIONS - STAGE 2B-3 / LOTS 1040-1048 | B |
| A-S2-2-12 | ELEVATIONS - STAGE 2A-1 / LOTS 611-636 | B | A-S2-2-56 | ELEVATIONS - STAGE 2B-3 / LOTS 1142-1149 | B |
| A-S2-2-13 | ELEVATIONS - STAGE 2A-1 / LOTS 711-716 | B | A-S2-2-57 | ELEVATIONS - STAGE 2B-3 / LOTS 1152-1161 | B |
| A-S2-2-14 | ELEVATIONS - STAGE 2A-1 / LOTS 703-710 | B | A-S2-2-58 | ELEVATIONS - STAGE 2B-3 / LOTS 1152-1161 | B |
| A-S2-2-15 | ELEVATIONS - STAGE 2A-1 / LOTS 682-693 | B | A-S2-2-59 | ELEVATIONS - STAGE 2B-3 / LOTS 1165-1174 | B |
| A-S2-2-16 | ELEVATIONS - STAGE 2A-1 / LOTS 675-680 | B | A-S2-2-60 | ELEVATIONS - STAGE 2B-3 / LOTS 1175-1187 | B |
| A-S2-2-17 | ELEVATIONS - STAGE 2A-1 | B | A-S2-2-61 | ELEVATIONS - STAGE 2B-3 / LOTS 1188-1200 | B |
| A-S2-2-18 | ELEVATIONS - STAGE 2A-1 | B | A-S2-2-62 | ELEVATIONS - STAGE 2B-3 / LOTS 1201-1227 | B |
| A-S2-2-19 | ELEVATIONS - STAGE 2A-1 / LOTS 695-698 | B | A-S2-2-63 | ELEVATIONS - STAGE 2B-3 / LOTS 1228-1238 | B |
| A-S2-2-20 | ELEVATIONS - STAGE 2A-1 / LOTS 757-763 | B | A-S2-2-64 | ELEVATIONS - STAGE 2B-3 / LOTS 1161-1165 | B |
| A-S2-2-21 | ELEVATIONS - STAGE 2A-2 / LOTS 802-826 | B | A-S2-2-65 | ELEVATIONS - STAGE 2B-3 / LOTS 1161-1165 | B |
| A-S2-2-22 | ELEVATIONS - STAGE 2A-2 / LOTS 802-826 | B | A-S2-2-66 | ELEVATIONS - STAGE 2B-3 / LOTS 1119-1127 | B |
| A-S2-2-23 | ELEVATIONS - STAGE 2A-2 / LOTS 827-845 | B | A-S2-2-67 | ELEVATIONS - STAGE 2B-3 | B |
| A-S2-2-24 | ELEVATIONS - STAGE 2A-2 / LOTS 827-845 | B | A-S2-2-68 | ELEVATIONS - STAGE 2B-3 | B |
| A-S2-2-25 | ELEVATIONS - STAGE 2A-2 / LOTS 798-802 & 845-... | B | A-S2-2-69 | ELEVATIONS - STAGE 2B-3 / LOTS 1057-1080 | B |
| A-S2-2-26 | ELEVATIONS - STAGE 2A-2 / LOTS 879-888 | B | A-S2-2-70 | ELEVATIONS - STAGE 2B-3 | B |
| A-S2-2-27 | ELEVATIONS - STAGE 2A-2 / LOTS 879-888 | B | A-S2-2-71 | ELEVATIONS - STAGE 2B-3 | B |
| A-S2-2-28 | ELEVATIONS - STAGE 2A-2 / LOTS 859-866 | B | A-S2-2-72 | ELEVATIONS - STAGE 2B-3 | B |
| A-S2-2-29 | ELEVATIONS - STAGE 2A-2 / LOTS 870-878 | B | A-S2-2-73 | ELEVATIONS - STAGE 2B-3 | B |
| A-S2-2-30 | ELEVATIONS - STAGE 2A-2 / LOTS 893-918 | B | A-S2-2-74 | ELEVATIONS - STAGE 2C / LOTS 1239-1243 | B |
| A-S2-2-31 | ELEVATIONS - STAGE 2A-2 / LOTS 893-918 | B | A-S2-2-75 | ELEVATIONS - STAGE 2C / LOTS 1255-1263 | B |
| A-S2-2-32 | ELEVATIONS - STAGE 2A-2 / LOTS 893-918 | B | A-S2-2-76 | ELEVATIONS - STAGE 2C / LOTS 1338 & 1353 | B |
| A-S2-2-33 | ELEVATIONS - STAGE 2A-2 - LOTS 776-797 | B | A-S2-2-77 | ELEVATIONS - STAGE 2C / LOTS 1304-1310 | B |
| A-S2-2-34 | ELEVATIONS - STAGE 2A-2 / LOTS - 776-797 | B | A-S2-2-78 | ELEVATIONS - STAGE 2C / LOTS 1301-1303 | B |
| A-S2-2-35 | ELEVATIONS - STAGE 2A-2 / LOTS 776-797 | B | A-S2-2-79 | ELEVATIONS - STAGE 2C / LOTS 1311-1319 | B |
| A-S2-2-36 | ELEVATIONS - STAGE 2A-2 / LOTS 932-938 | B | A-S2-2-80 | ELEVATIONS - STAGE 2C / LOTS 1311-1319 | B |
| A-S2-2-37 | ELEVATIONS - STAGE 2A-2 / LOTS 939-947 | B | A-S2-2-81 | ELEVATIONS - STAGE 2C / LOTS 1284-1293 | B |
| A-S2-2-38 | ELEVATIONS - STAGE 2B-1 / LOTS 966-981 | B | A-S2-2-82 | ELEVATIONS - STAGE 2C / LOTS 1323-1329 | B |
| A-S2-2-39 | ELEVATIONS - STAGE 2B-1 / LOTS 958-965 | B | A-S2-2-83 | ELEVATIONS - STAGE 2C / LOTS 1330-1337 | B |
| A-S2-2-40 | ELEVATIONS - STAGE 2B-2 / LOTS 982-998 | B | A-S2-2-84 | ELEVATIONS - STAGE 2C / LOTS 1338-1345 | B |
| A-S2-2-41 | ELEVATIONS - STAGE 2B-2 / LOTS 982-998 | B | A-S2-2-85 | ELEVATIONS - STAGE 2C / LOTS 1346-1353 | B |
| A-S2-2-42 | ELEVATIONS - STAGE 2B-2 / LOTS 999-1023 | B | A-S2-2-86 | ELEVATIONS - STAGE 2C / LOTS 1263-1269 | B |
| A-S2-2-43 | ELEVATIONS - STAGE 2B-2 / LOTS 999-1023 | B | A-S2-2-87 | ELEVATIONS - STAGE 2C / LOTS 1271-1277 | B |
| A-S2-2-44 | ELEVATIONS - STAGE 2B-3 / PARK | B | | | |

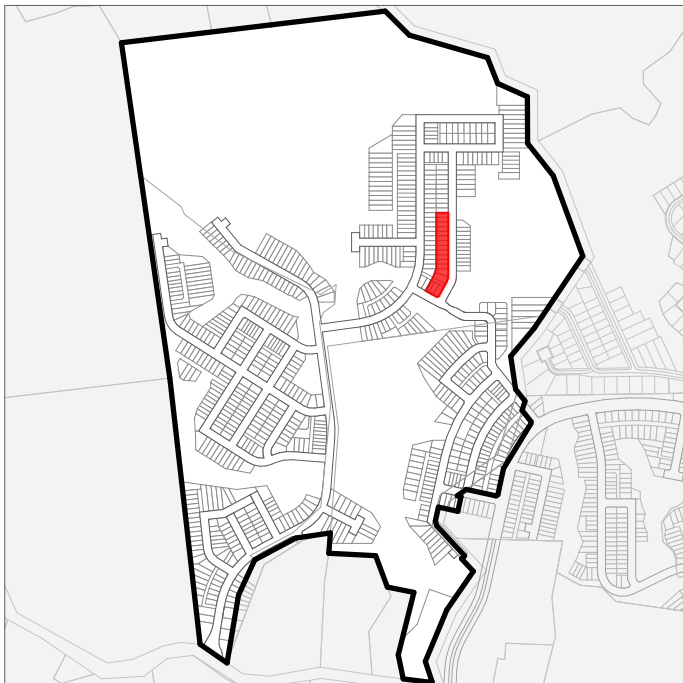
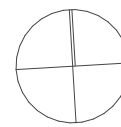


2

ELEVATION - STAGE 2A-2 - LOTS 802-826

1:250

TERRA STUDIO



PROJECT KEY

NOTES

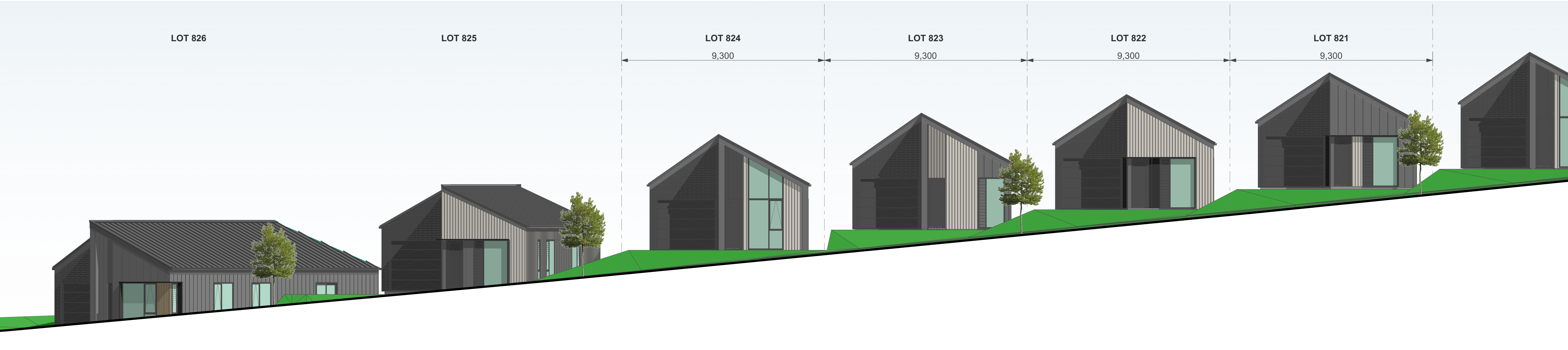
LOT BOUNDARIES AND DIMENSIONS SHOWN ARE APPROXIMATE ONLY - ELEVATION PLANES DO NOT RUN PARALLEL TO ROAD FRONTAGES IN ALL CASES. FOR SPECIFIC INFORMATION, REFER TO THE CIVIL ENGINEER'S SCHEME PLANS.

BOTH PRIVATE AND PUBLIC LANDSCAPE FEATURES SHOWN ARE INDICATIVE ONLY - FOR DETAILED DESIGN REFER TO THE LANDSCAPE ARCHITECT'S DRAWINGS.

3D MODEL TRIANGULATION MAY BE VISIBLE IN SOME AREAS - REFER TO THE CIVIL CONTOUR PLANS FOR CLARITY.

IN THE CASE OF ANY DISCREPANCIES BETWEEN THE ELEVATIONS SHOWN ON THIS SHEET AND THOSE REFERENCED IN THE TYPOLOGY PLAN BOOK, THE LATTER SHALL TAKE PRECEDENCE.

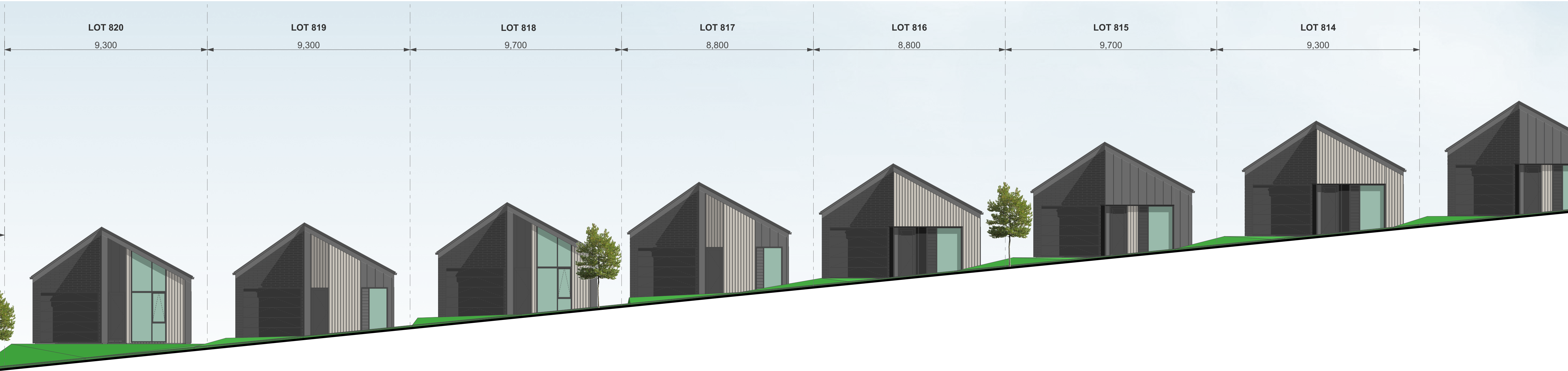
IN THE CASE OF ANY DISCREPANCIES BETWEEN THE LOT NUMBERS SHOWN ON THIS SHEET AND THOSE REFERENCED IN THE CIVIL ENGINEER'S SCHEME PLANS, THE LATTER SHALL TAKE PRECEDENCE.



3

ELEVATION - STAGE 2A-2 - LOTS 802-826

1:100



4

ELEVATION - STAGE 2A-2 - LOTS 802-826

1:100

CLIENT VINEWAY LIMITED

PROJECT NAME DELMORE - STAGE 1

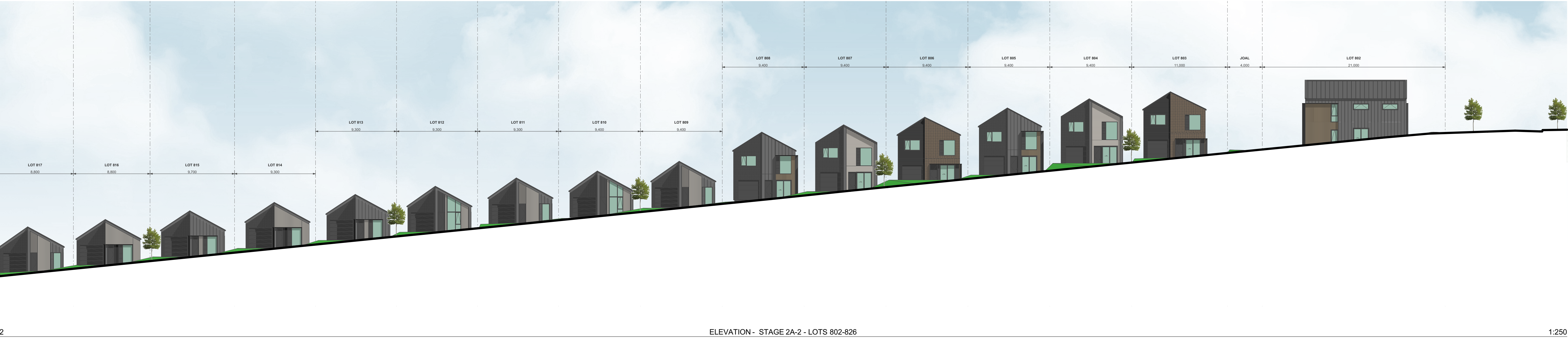
DRAWING TITLE ELEVATIONS - STAGE 2A-2 / LOTS 802-826

SCALE 1:15000, 1:250, 1:100

REVISION NO. B

DRAWING NO.

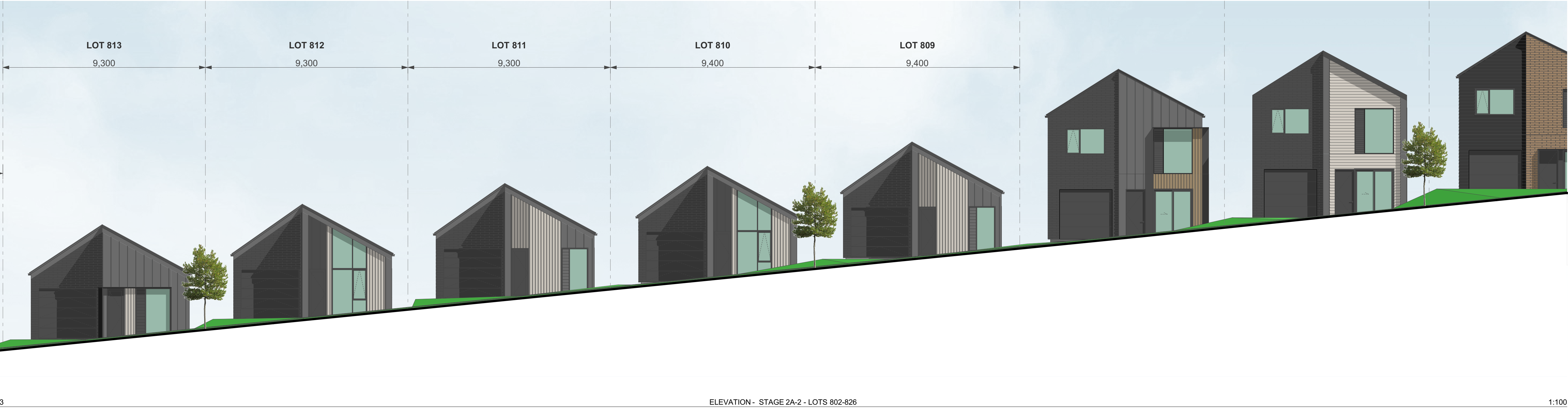
A-S2-2-21



2

ELEVATION - STAGE 2A-2 - LOTS 802-826

1:250



3

ELEVATION - STAGE 2A-2 - LOTS 802-826

1:100



4

ELEVATION - STAGE 2A-2 - LOTS 802-826

1:100

TERRA STUDIO

PROJECT KEY

NOTES

LOT BOUNDARIES AND DIMENSIONS SHOWN ARE APPROXIMATE ONLY - ELEVATION PLANES DO NOT RUN PARALLEL TO ROAD FRONTAGES IN ALL CASES. FOR SPECIFIC INFORMATION, REFER TO THE CIVIL ENGINEER'S SCHEME PLANS.

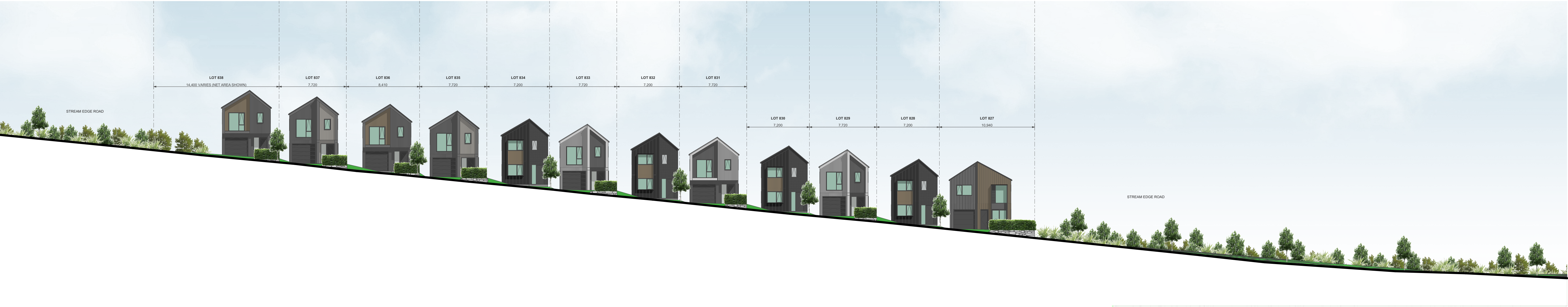
BOTH PRIVATE AND PUBLIC LANDSCAPE FEATURES SHOWN ARE INDICATIVE ONLY - FOR DETAILED DESIGN REFER TO THE LANDSCAPE ARCHITECT'S DRAWINGS.

3D MODEL TRIANGULATION MAY BE VISIBLE IN SOME AREAS - REFER TO THE CIVIL CONTOUR PLANS FOR CLARITY.

IN THE CASE OF ANY DISCREPANCIES BETWEEN THE ELEVATIONS SHOWN ON THIS SHEET AND THOSE REFERENCED IN THE TYPOLOGY PLAN BOOK, THE LATTER SHALL TAKE PRECEDENCE.

IN THE CASE OF ANY DISCREPANCIES BETWEEN THE LOT NUMBERS SHOWN ON THIS SHEET AND THOSE REFERENCED IN THE CIVIL ENGINEER'S SCHEME PLANS, THE LATTER SHALL TAKE PRECEDENCE.

| | |
|---------------|--|
| CLIENT | VINEWAY LIMITED |
| PROJECT NAME | DELMORE - STAGE 1 |
| DRAWING TITLE | ELEVATIONS - STAGE 2A-2 / LOTS 802-826 |
| SCALE | 1:15000, 1:250, 1:100 |
| REVISION NO. | B |
| | |
| DRAWING NO. | A-S2-2-22 |



2

ELEVATION - STAGE 2A-2 - LOTS 827-845

1:250



3

ELEVATION - STAGE 2A-2 - LOTS 827-845

1:100

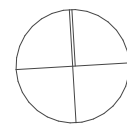


4

ELEVATION - STAGE 2A-2 - LOTS 827-845

1:100

TERRA STUDIO



PROJECT KEY

NOTES

LOT BOUNDARIES AND DIMENSIONS SHOWN ARE APPROXIMATE ONLY - ELEVATION PLANES DO NOT RUN PARALLEL TO ROAD FRONTAGES IN ALL CASES. FOR SPECIFIC INFORMATION, REFER TO THE CIVIL ENGINEER'S SCHEME PLANS.

BOTH PRIVATE AND PUBLIC LANDSCAPE FEATURES SHOWN ARE INDICATIVE ONLY - FOR DETAILED DESIGN REFER TO THE LANDSCAPE ARCHITECT'S DRAWINGS.

3D MODEL TRIANGULATION MAY BE VISIBLE IN SOME AREAS - REFER TO THE CIVIL CONTOUR PLANS FOR CLARITY.

IN THE CASE OF ANY DISCREPANCIES BETWEEN THE ELEVATIONS SHOWN ON THIS SHEET AND THOSE REFERENCED IN THE TYPOLOGY PLAN BOOK, THE LATTER SHALL TAKE PRECEDENCE.

IN THE CASE OF ANY DISCREPANCIES BETWEEN THE LOT NUMBERS SHOWN ON THIS SHEET AND THOSE REFERENCED IN THE CIVIL ENGINEER'S SCHEME PLANS, THE LATTER SHALL TAKE PRECEDENCE.

CLIENT VINEWAY LIMITED

PROJECT NAME DELMORE - STAGE 1

DRAWING TITLE ELEVATIONS - STAGE 2A-2 / LOTS 827-845

SCALE 1:15000, 1:250, 1:100

REVISION NO. B

DRAWING NO.

A-S2-2-23



2

ELEVATION - STAGE 2A-2 - LOTS 827-845

1:250

TERRA STUDIO

PROJECT KEY

NOTES

LOT BOUNDARIES AND DIMENSIONS SHOWN ARE APPROXIMATE ONLY - ELEVATION PLANES DO NOT RUN PARALLEL TO ROAD FRONTAGES IN ALL CASES. FOR SPECIFIC INFORMATION, REFER TO THE CIVIL ENGINEER'S SCHEME PLANS.

BOTH PRIVATE AND PUBLIC LANDSCAPE FEATURES SHOWN ARE INDICATIVE ONLY - FOR DETAILED DESIGN REFER TO THE LANDSCAPE ARCHITECT'S DRAWINGS.

3D MODEL TRIANGULATION MAY BE VISIBLE IN SOME AREAS - REFER TO THE CIVIL CONTOUR PLANS FOR CLARITY.

IN THE CASE OF ANY DISCREPANCIES BETWEEN THE ELEVATIONS SHOWN ON THIS SHEET AND THOSE REFERENCED IN THE TYPOLOGY PLAN BOOK, THE LATTER SHALL TAKE PRECEDENCE.

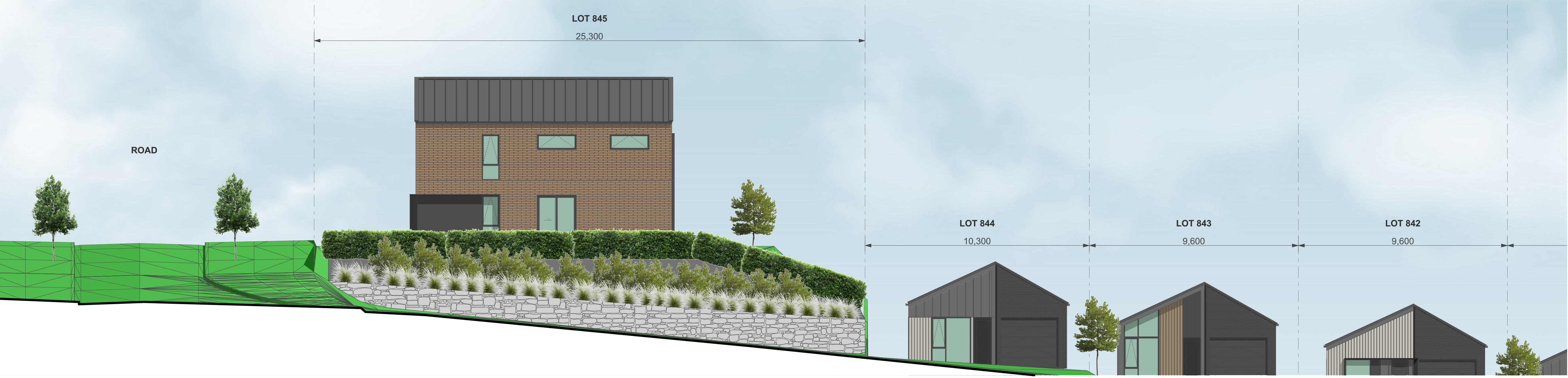
IN THE CASE OF ANY DISCREPANCIES BETWEEN THE LOT NUMBERS SHOWN ON THIS SHEET AND THOSE REFERENCED IN THE CIVIL ENGINEER'S SCHEME PLANS, THE LATTER SHALL TAKE PRECEDENCE.



3

ELEVATION - STAGE 2A-2 - LOTS 827-845

1:100



4

ELEVATION - STAGE 2A-2 - LOTS 827-845

1:100

| | |
|---------------|--|
| CLIENT | VINEWAY LIMITED |
| PROJECT NAME | DELMORE - STAGE 1 |
| DRAWING TITLE | ELEVATIONS - STAGE 2A-2 / LOTS 827-845 |
| SCALE | 1:15000, 1:250, 1:100 |
| REVISION NO. | B |
| DRAWING NO. | A-S2-2-24 |



2

ELEVATION - STAGE 2A-2 - LOTS 798-802 & 845-852

1:250



3

ELEVATION - STAGE 2A-2 - LOTS 798-802 & 845-852

1:100



4

ELEVATION - STAGE 2A-2 - LOTS 798-802 & 845-852

1:100

TERRA STUDIO

PROJECT KEY

NOTES

LOT BOUNDARIES AND DIMENSIONS SHOWN ARE APPROXIMATE ONLY - ELEVATION PLANES DO NOT RUN PARALLEL TO ROAD FRONTAGES IN ALL CASES. FOR SPECIFIC INFORMATION, REFER TO THE CIVIL ENGINEER'S SCHEME PLANS.

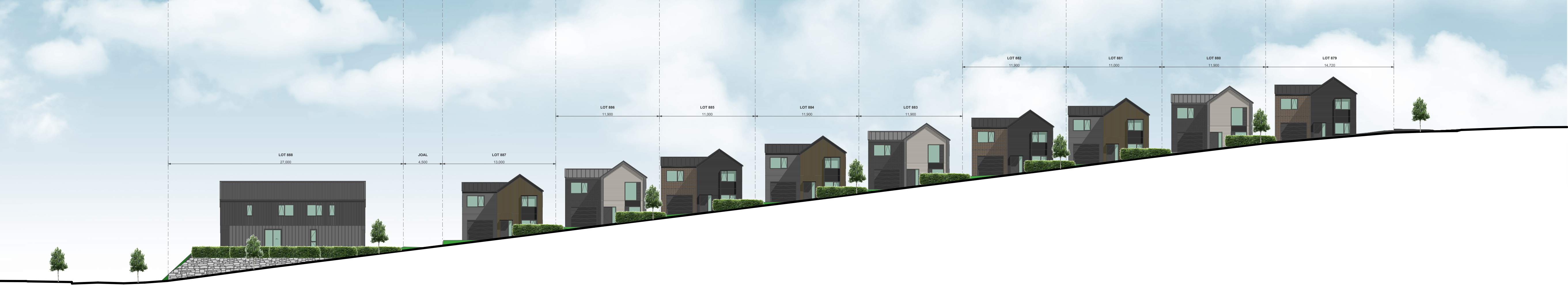
BOTH PRIVATE AND PUBLIC LANDSCAPE FEATURES SHOWN ARE INDICATIVE ONLY - FOR DETAILED DESIGN REFER TO THE LANDSCAPE ARCHITECT'S DRAWINGS.

3D MODEL TRIANGULATION MAY BE VISIBLE IN SOME AREAS - REFER TO THE CIVIL CONTOUR PLANS FOR CLARITY.

IN THE CASE OF ANY DISCREPANCIES BETWEEN THE ELEVATIONS SHOWN ON THIS SHEET AND THOSE REFERENCED IN THE TYPOLOGY PLAN BOOK, THE LATTER SHALL TAKE PRECEDENCE.

IN THE CASE OF ANY DISCREPANCIES BETWEEN THE LOT NUMBERS SHOWN ON THIS SHEET AND THOSE REFERENCED IN THE CIVIL ENGINEER'S SCHEME PLANS, THE LATTER SHALL TAKE PRECEDENCE.

| | |
|---------------|--|
| CLIENT | VINEWAY LIMITED |
| PROJECT NAME | DELMORE - STAGE 1 |
| DRAWING TITLE | ELEVATIONS - STAGE 2A-2 / LOTS 798-802 & 845-852 |
| SCALE | 1:15000, 1:250, 1:100 |
| REVISION NO. | B |
| DRAWING NO. | A-S2-2-25 |

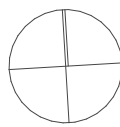


2

ELEVATION - STAGE 2A-2 - LOTS 879-888

1:250

TERRA STUDIO



PROJECT KEY

NOTES

LOT BOUNDARIES AND DIMENSIONS SHOWN ARE APPROXIMATE ONLY - ELEVATION PLANES DO NOT RUN PARALLEL TO ROAD FRONTAGES IN ALL CASES. FOR SPECIFIC INFORMATION, REFER TO THE CIVIL ENGINEER'S SCHEME PLANS.

BOTH PRIVATE AND PUBLIC LANDSCAPE FEATURES SHOWN ARE INDICATIVE ONLY - FOR DETAILED DESIGN REFER TO THE LANDSCAPE ARCHITECT'S DRAWINGS.

3D MODEL TRIANGULATION MAY BE VISIBLE IN SOME AREAS - REFER TO THE CIVIL CONTOUR PLANS FOR CLARITY.

IN THE CASE OF ANY DISCREPANCIES BETWEEN THE ELEVATIONS SHOWN ON THIS SHEET AND THOSE REFERENCED IN THE TYPOLOGY PLAN BOOK, THE LATTER SHALL TAKE PRECEDENCE.

IN THE CASE OF ANY DISCREPANCIES BETWEEN THE LOT NUMBERS SHOWN ON THIS SHEET AND THOSE REFERENCED IN THE CIVIL ENGINEER'S SCHEME PLANS, THE LATTER SHALL TAKE PRECEDENCE.



3

ELEVATION - STAGE 2A-2 - LOTS 879-888

1:100



4

ELEVATION - STAGE 2A-2 - LOTS 879-888

1:100

CLIENT VINEWAY LIMITED

PROJECT NAME DELMORE - STAGE 1

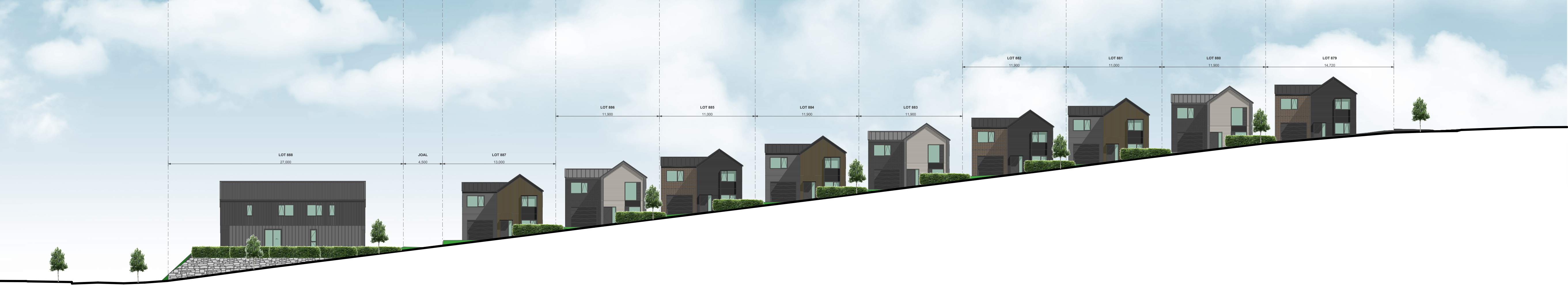
DRAWING TITLE ELEVATIONS - STAGE 2A-2 / LOTS 879-888

SCALE 1:15000, 1:250, 1:100

REVISION NO. B

DRAWING NO.

A-S2-2-26



2

ELEVATION - STAGE 2A-2 - LOTS 879-888

1:250

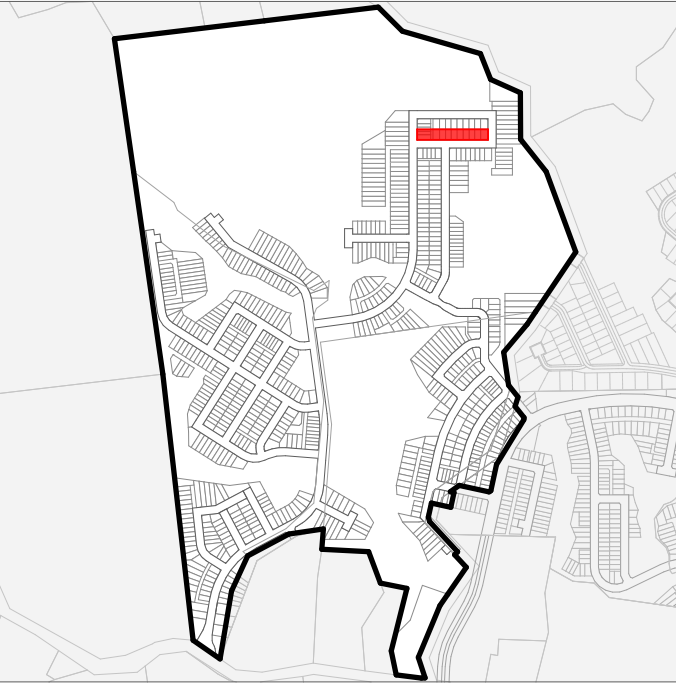
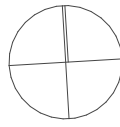


3

ELEVATION - STAGE 2A-2 - LOTS 879-888

1:100

TERRA STUDIO



PROJECT KEY

NOTES

LOT BOUNDARIES AND DIMENSIONS SHOWN ARE APPROXIMATE ONLY - ELEVATION PLANES DO NOT RUN PARALLEL TO ROAD FRONTAGES IN ALL CASES. FOR SPECIFIC INFORMATION, REFER TO THE CIVIL ENGINEER'S SCHEME PLANS.

BOTH PRIVATE AND PUBLIC LANDSCAPE FEATURES SHOWN ARE INDICATIVE ONLY - FOR DETAILED DESIGN REFER TO THE LANDSCAPE ARCHITECT'S DRAWINGS.

3D MODEL TRIANGULATION MAY BE VISIBLE IN SOME AREAS - REFER TO THE CIVIL CONTOUR PLANS FOR CLARITY.

IN THE CASE OF ANY DISCREPANCIES BETWEEN THE ELEVATIONS SHOWN ON THIS SHEET AND THOSE REFERENCED IN THE TYPOLOGY PLAN BOOK, THE LATTER SHALL TAKE PRECEDENCE.

IN THE CASE OF ANY DISCREPANCIES BETWEEN THE LOT NUMBERS SHOWN ON THIS SHEET AND THOSE REFERENCED IN THE CIVIL ENGINEER'S SCHEME PLANS, THE LATTER SHALL TAKE PRECEDENCE.

CLIENT VINEWAY LIMITED

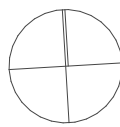
PROJECT NAME DELMORE - STAGE 1

DRAWING TITLE ELEVATIONS - STAGE 2A-2 / LOTS 879-888

SCALE 1:15000, 1:250, 1:100

REVISION NO. B

DRAWING NO. A-S2-2-27



PROJECT KEY

NOTES

LOT BOUNDARIES AND DIMENSIONS SHOWN ARE APPROXIMATE ONLY - ELEVATION PLANES DO NOT RUN PARALLEL TO ROAD FRONTAGES IN ALL CASES. FOR SPECIFIC INFORMATION, REFER TO THE CIVIL ENGINEER'S SCHEME PLANS.

BOTH PRIVATE AND PUBLIC LANDSCAPE FEATURES SHOWN ARE INDICATIVE ONLY - FOR DETAILED DESIGN REFER TO THE LANDSCAPE ARCHITECT'S DRAWINGS.

3D MODEL TRIANGULATION MAY BE VISIBLE IN SOME AREAS - REFER TO THE CIVIL CONTOUR PLANS FOR CLARITY.

IN THE CASE OF ANY DISCREPANCIES BETWEEN THE ELEVATIONS SHOWN ON THIS SHEET AND THOSE REFERENCED IN THE TYPOLOGY PLAN BOOK, THE LATTER SHALL TAKE PRECEDENCE.

IN THE CASE OF ANY DISCREPANCIES BETWEEN THE LOT NUMBERS SHOWN ON THIS SHEET AND THOSE REFERENCED IN THE CIVIL ENGINEER'S SCHEME PLANS, THE LATTER SHALL TAKE PRECEDENCE.

CLIENT VINEWAY LIMITED

PROJECT NAME DELMORE - STAGE 1

DRAWING TITLE ELEVATIONS - STAGE 2A-2 / LOTS 859-866

SCALE 1:15000, 1:100

REVISION NO. B

DRAWING NO.

A-S2-2-28

ROAD

LOT 879
21,000

LOT 878
21,000

ROAD

1:100

ELEVATION - STAGE 2A-2 - LOTS 879-878

LOT 866

9,300

LOT 865

8,910

LOT 864

9,300

LOT 863

9,300

LOT 862

9,300

LOT 861

9,300

LOT 860

8,300

LOT 859

10,290

1:100

ELEVATION - STAGE 2A-2 - LOTS 859-866



2

ELEVATION - STAGE 2A-2 - LOTS 870-878

1:250



3

ELEVATION - STAGE 2A-2 - LOTS 870-878

1:100



4

ELEVATION - STAGE 2A-2 - LOTS 870-878

1:100

TERRA STUDIO

PROJECT KEY

NOTES

LOT BOUNDARIES AND DIMENSIONS SHOWN ARE APPROXIMATE ONLY - ELEVATION PLANES DO NOT RUN PARALLEL TO ROAD FRONTAGES IN ALL CASES. FOR SPECIFIC INFORMATION, REFER TO THE CIVIL ENGINEER'S SCHEME PLANS.

BOTH PRIVATE AND PUBLIC LANDSCAPE FEATURES SHOWN ARE INDICATIVE ONLY - FOR DETAILED DESIGN REFER TO THE LANDSCAPE ARCHITECT'S DRAWINGS.

3D MODEL TRIANGULATION MAY BE VISIBLE IN SOME AREAS - REFER TO THE CIVIL CONTOUR PLANS FOR CLARITY.

IN THE CASE OF ANY DISCREPANCIES BETWEEN THE ELEVATIONS SHOWN ON THIS SHEET AND THOSE REFERENCED IN THE TYPOLOGY PLAN BOOK, THE LATTER SHALL TAKE PRECEDENCE.

IN THE CASE OF ANY DISCREPANCIES BETWEEN THE LOT NUMBERS SHOWN ON THIS SHEET AND THOSE REFERENCED IN THE CIVIL ENGINEER'S SCHEME PLANS, THE LATTER SHALL TAKE PRECEDENCE.

| | |
|---------------|--|
| CLIENT | VINEWAY LIMITED |
| PROJECT NAME | DELMORE - STAGE 1 |
| DRAWING TITLE | ELEVATIONS - STAGE 2A-2 / LOTS 870-878 |
| SCALE | 1:15000, 1:250, 1:100 |
| REVISION NO. | B |
| DRAWING NO. | A-S2-2-29 |



2

ELEVATION - STAGE 2A-2 - LOTS 893-918

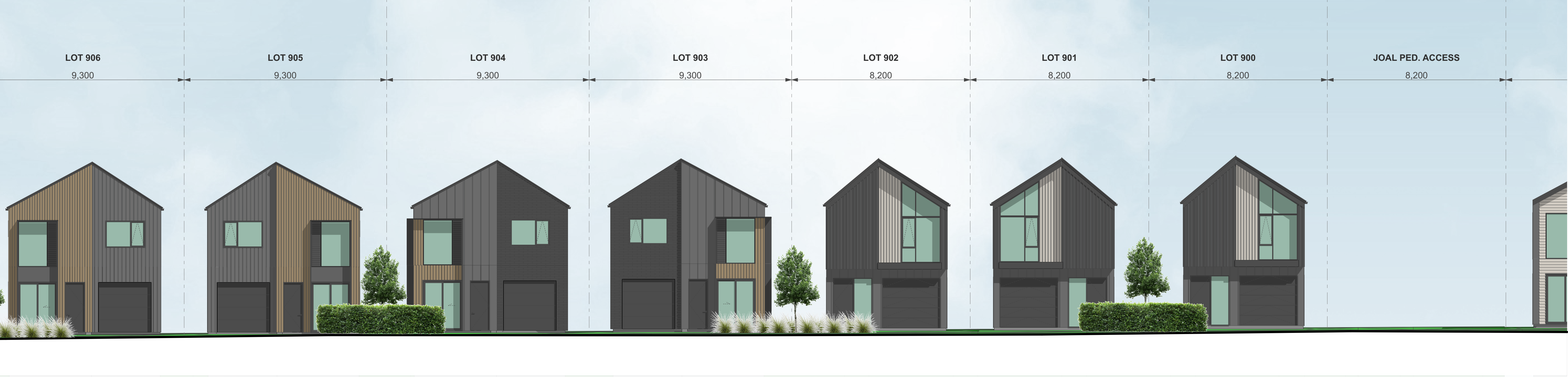
1:250



3

ELEVATION - STAGE 2A-2 - LOTS 893-918

1:100



4

ELEVATION - STAGE 2A-2 - LOTS 893-918

1:100

TERRA STUDIO

PROJECT KEY

NOTES

LOT BOUNDARIES AND DIMENSIONS SHOWN ARE APPROXIMATE ONLY - ELEVATION PLANES DO NOT RUN PARALLEL TO ROAD FRONTAGES IN ALL CASES. FOR SPECIFIC INFORMATION, REFER TO THE CIVIL ENGINEER'S SCHEME PLANS.

BOTH PRIVATE AND PUBLIC LANDSCAPE FEATURES SHOWN ARE INDICATIVE ONLY - FOR DETAILED DESIGN REFER TO THE LANDSCAPE ARCHITECT'S DRAWINGS.

3D MODEL TRIANGULATION MAY BE VISIBLE IN SOME AREAS - REFER TO THE CIVIL CONTOUR PLANS FOR CLARITY.

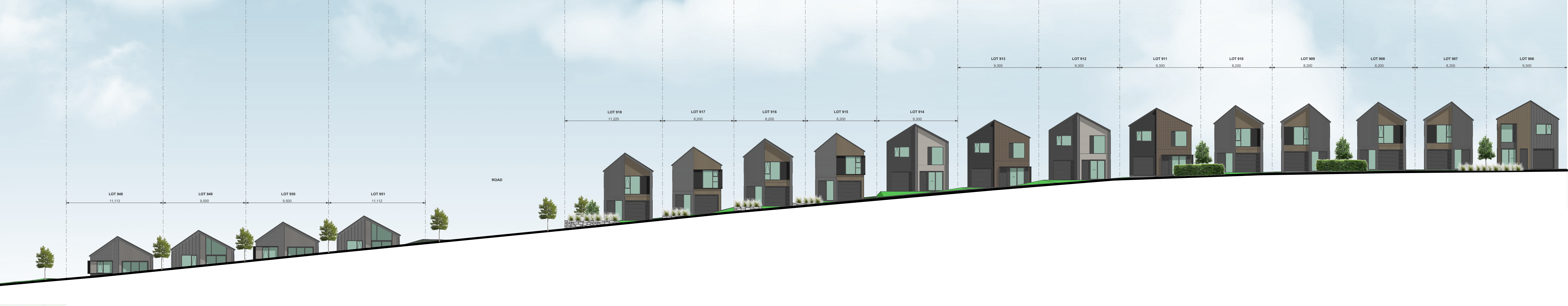
IN THE CASE OF ANY DISCREPANCIES BETWEEN THE ELEVATIONS SHOWN ON THIS SHEET AND THOSE REFERENCED IN THE TYPOLOGY PLAN BOOK, THE LATTER SHALL TAKE PRECEDENCE.

IN THE CASE OF ANY DISCREPANCIES BETWEEN THE LOT NUMBERS SHOWN ON THIS SHEET AND THOSE REFERENCED IN THE CIVIL ENGINEER'S SCHEME PLANS, THE LATTER SHALL TAKE PRECEDENCE.

| | |
|---------------|--|
| CLIENT | VINEWAY LIMITED |
| PROJECT NAME | DELMORE - STAGE 1 |
| DRAWING TITLE | ELEVATIONS - STAGE 2A-2 / LOTS 893-918 |
| SCALE | 1:15000, 1:250, 1:100 |
| REVISION NO. | B |

DRAWING NO.

A-S2-2-30

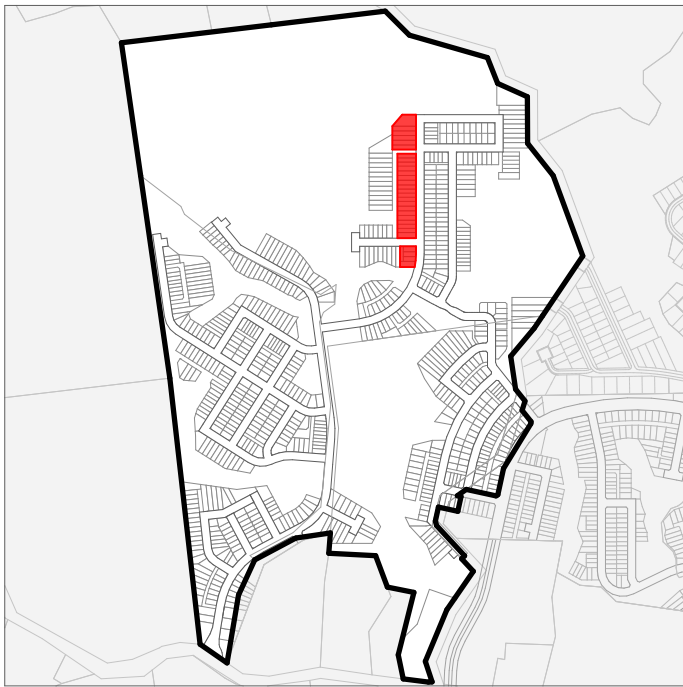


2

ELEVATION - STAGE 2A-2 - LOTS 893-918

1:250

TERRA STUDIO



PROJECT KEY

NOTES

LOT BOUNDARIES AND DIMENSIONS SHOWN ARE APPROXIMATE ONLY - ELEVATION PLANES DO NOT RUN PARALLEL TO ROAD FRONTAGES IN ALL CASES. FOR SPECIFIC INFORMATION, REFER TO THE CIVIL ENGINEER'S SCHEME PLANS.

BOTH PRIVATE AND PUBLIC LANDSCAPE FEATURES SHOWN ARE INDICATIVE ONLY - FOR DETAILED DESIGN REFER TO THE LANDSCAPE ARCHITECT'S DRAWINGS.

3D MODEL TRIANGULATION MAY BE VISIBLE IN SOME AREAS - REFER TO THE CIVIL CONTOUR PLANS FOR CLARITY.

IN THE CASE OF ANY DISCREPANCIES BETWEEN THE ELEVATIONS SHOWN ON THIS SHEET AND THOSE REFERENCED IN THE TYPOLOGY PLAN BOOK, THE LATTER SHALL TAKE PRECEDENCE.

IN THE CASE OF ANY DISCREPANCIES BETWEEN THE LOT NUMBERS SHOWN ON THIS SHEET AND THOSE REFERENCED IN THE CIVIL ENGINEER'S SCHEME PLANS, THE LATTER SHALL TAKE PRECEDENCE.



3

ELEVATION - STAGE 2A-2 - LOTS 893-918

1:100



4

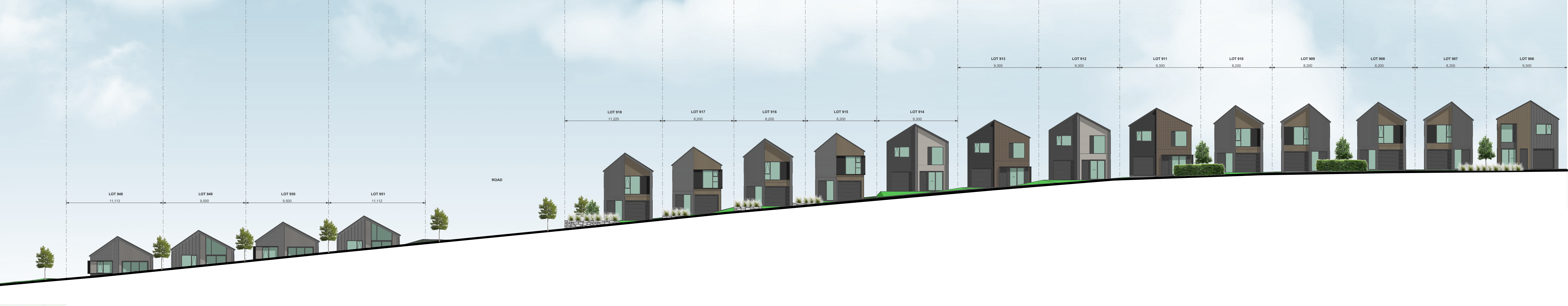
ELEVATION - STAGE 2A-2 - LOTS 893-918

1:100

| | |
|---------------|--|
| CLIENT | VINEWAY LIMITED |
| PROJECT NAME | DELMORE - STAGE 1 |
| DRAWING TITLE | ELEVATIONS - STAGE 2A-2 / LOTS 893-918 |
| SCALE | 1:15000, 1:250, 1:100 |
| REVISION NO. | B |

DRAWING NO.

A-S2-2-31



2

ELEVATION - STAGE 2A-2 - LOTS 893-918

1:250



3

ELEVATION - STAGE 2A-2 - LOTS 893-918

1:100

TERRA STUDIO

PROJECT KEY

NOTES

LOT BOUNDARIES AND DIMENSIONS SHOWN ARE APPROXIMATE ONLY - ELEVATION PLANES DO NOT RUN PARALLEL TO ROAD FRONTAGES IN ALL CASES. FOR SPECIFIC INFORMATION, REFER TO THE CIVIL ENGINEER'S SCHEME PLANS.

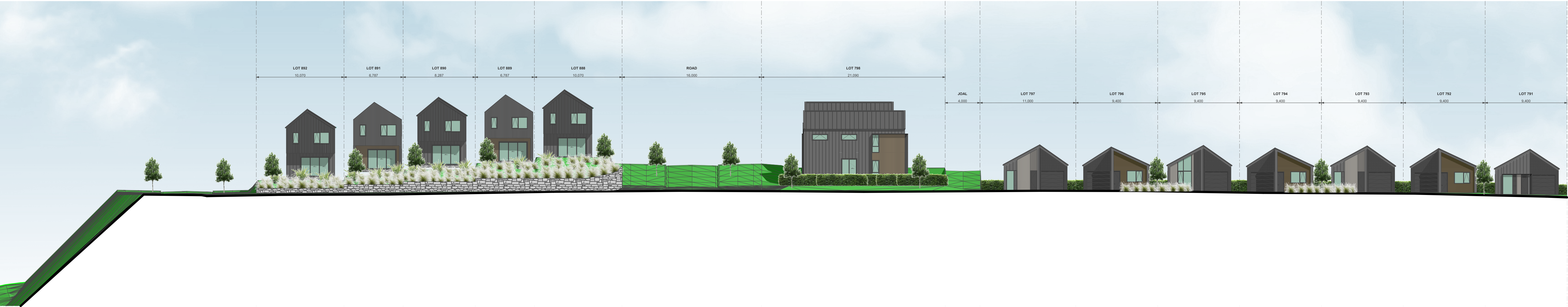
BOTH PRIVATE AND PUBLIC LANDSCAPE FEATURES SHOWN ARE INDICATIVE ONLY - FOR DETAILED DESIGN REFER TO THE LANDSCAPE ARCHITECT'S DRAWINGS.

3D MODEL TRIANGULATION MAY BE VISIBLE IN SOME AREAS - REFER TO THE CIVIL CONTOUR PLANS FOR CLARITY.

IN THE CASE OF ANY DISCREPANCIES BETWEEN THE ELEVATIONS SHOWN ON THIS SHEET AND THOSE REFERENCED IN THE TYPOLOGY PLAN BOOK, THE LATTER SHALL TAKE PRECEDENCE.

IN THE CASE OF ANY DISCREPANCIES BETWEEN THE LOT NUMBERS SHOWN ON THIS SHEET AND THOSE REFERENCED IN THE CIVIL ENGINEER'S SCHEME PLANS, THE LATTER SHALL TAKE PRECEDENCE.

| | |
|---------------|--|
| CLIENT | VINEWAY LIMITED |
| PROJECT NAME | DELMORE - STAGE 1 |
| DRAWING TITLE | ELEVATIONS - STAGE 2A-2 / LOTS 893-918 |
| SCALE | 1:15000, 1:250, 1:100 |
| REVISION NO. | B |
| | |
| DRAWING NO. | A-S2-2-32 |



2

ELEVATION - STAGE 2A-2 - LOTS 776-797

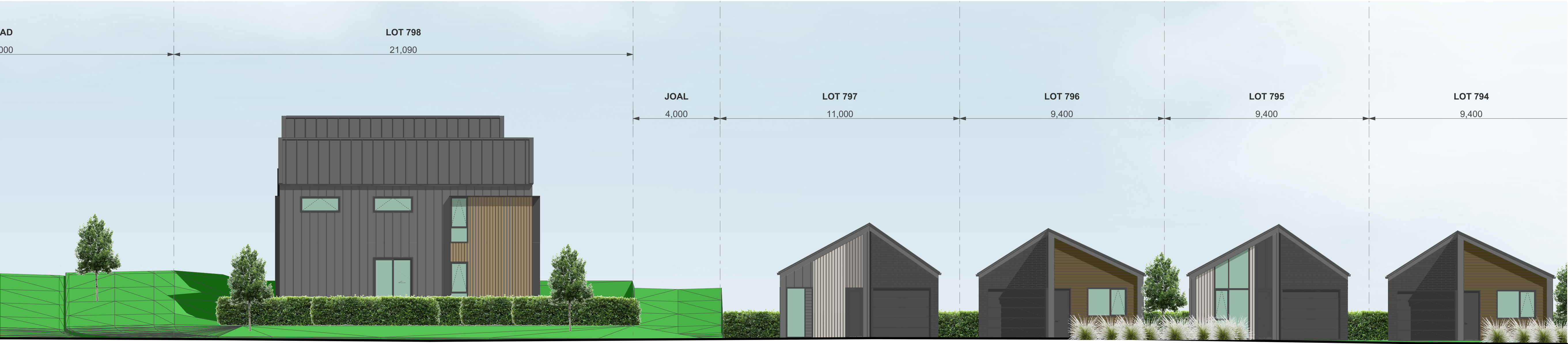
1:250



3

ELEVATION - STAGE 2A-2 - LOTS 776-797

1:100



4

ELEVATION - STAGE 2A-2 - LOTS 776-797

1:100

TERRA STUDIO

PROJECT KEY

NOTES

LOT BOUNDARIES AND DIMENSIONS SHOWN ARE APPROXIMATE ONLY - ELEVATION PLANES DO NOT RUN PARALLEL TO ROAD FRONTAGES IN ALL CASES. FOR SPECIFIC INFORMATION, REFER TO THE CIVIL ENGINEER'S SCHEME PLANS.

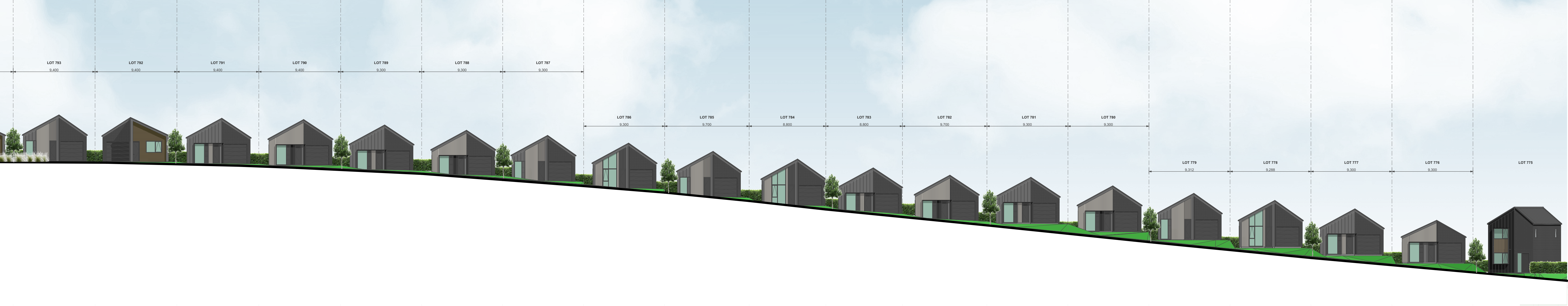
BOTH PRIVATE AND PUBLIC LANDSCAPE FEATURES SHOWN ARE INDICATIVE ONLY - FOR DETAILED DESIGN REFER TO THE LANDSCAPE ARCHITECT'S DRAWINGS.

3D MODEL TRIANGULATION MAY BE VISIBLE IN SOME AREAS - REFER TO THE CIVIL CONTOUR PLANS FOR CLARITY.

IN THE CASE OF ANY DISCREPANCIES BETWEEN THE ELEVATIONS SHOWN ON THIS SHEET AND THOSE REFERENCED IN THE TYPOLOGY PLAN BOOK, THE LATTER SHALL TAKE PRECEDENCE.

IN THE CASE OF ANY DISCREPANCIES BETWEEN THE LOT NUMBERS SHOWN ON THIS SHEET AND THOSE REFERENCED IN THE CIVIL ENGINEER'S SCHEME PLANS, THE LATTER SHALL TAKE PRECEDENCE.

| | |
|---------------|--|
| CLIENT | VINEWAY LIMITED |
| PROJECT NAME | DELMORE - STAGE 1 |
| DRAWING TITLE | ELEVATIONS - STAGE 2A-2 - LOTS 776-797 |
| SCALE | 1:15000, 1:250, 1:100 |
| REVISION NO. | B |
| DRAWING NO. | A-S2-2-33 |

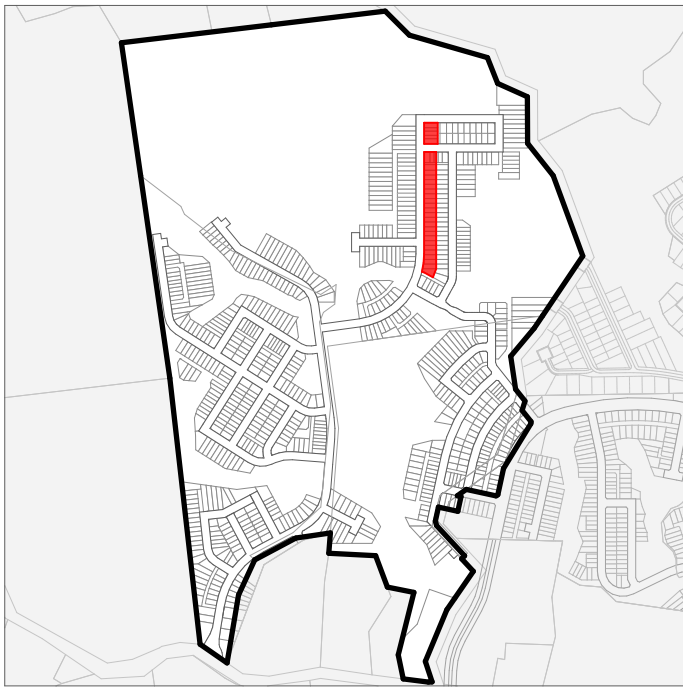


2

ELEVATION - STAGE 2A-2 - LOTS 776-797

1:250

TERRA STUDIO



PROJECT KEY

NOTES

LOT BOUNDARIES AND DIMENSIONS SHOWN ARE APPROXIMATE ONLY - ELEVATION PLANES DO NOT RUN PARALLEL TO ROAD FRONTAGES IN ALL CASES. FOR SPECIFIC INFORMATION, REFER TO THE CIVIL ENGINEER'S SCHEME PLANS.

BOTH PRIVATE AND PUBLIC LANDSCAPE FEATURES SHOWN ARE INDICATIVE ONLY - FOR DETAILED DESIGN REFER TO THE LANDSCAPE ARCHITECT'S DRAWINGS.

3D MODEL TRIANGULATION MAY BE VISIBLE IN SOME AREAS - REFER TO THE CIVIL CONTOUR PLANS FOR CLARITY.

IN THE CASE OF ANY DISCREPANCIES BETWEEN THE ELEVATIONS SHOWN ON THIS SHEET AND THOSE REFERENCED IN THE TYPOLOGY PLAN BOOK, THE LATTER SHALL TAKE PRECEDENCE.

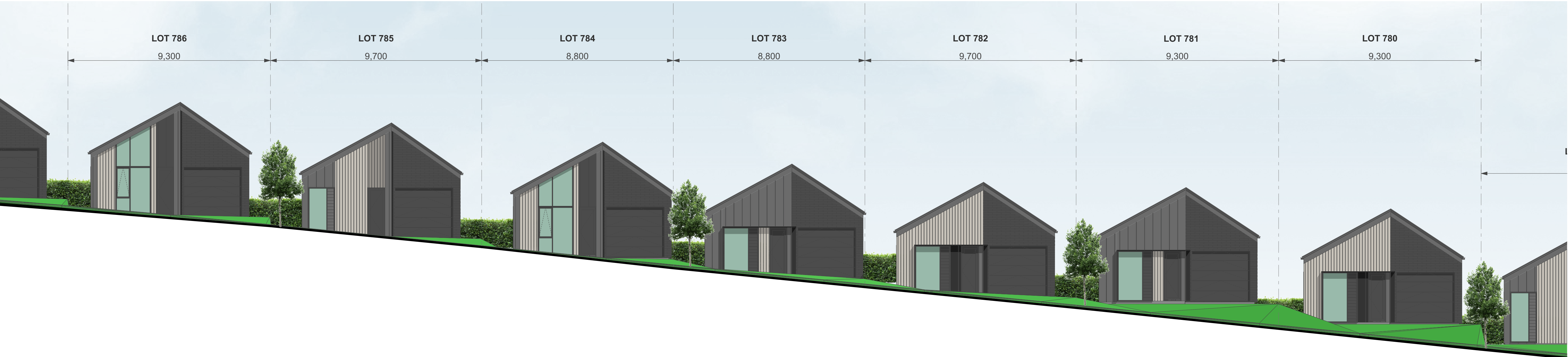
IN THE CASE OF ANY DISCREPANCIES BETWEEN THE LOT NUMBERS SHOWN ON THIS SHEET AND THOSE REFERENCED IN THE CIVIL ENGINEER'S SCHEME PLANS, THE LATTER SHALL TAKE PRECEDENCE.



3

ELEVATION - STAGE 2A-2 - LOTS 776-797

1:100



4

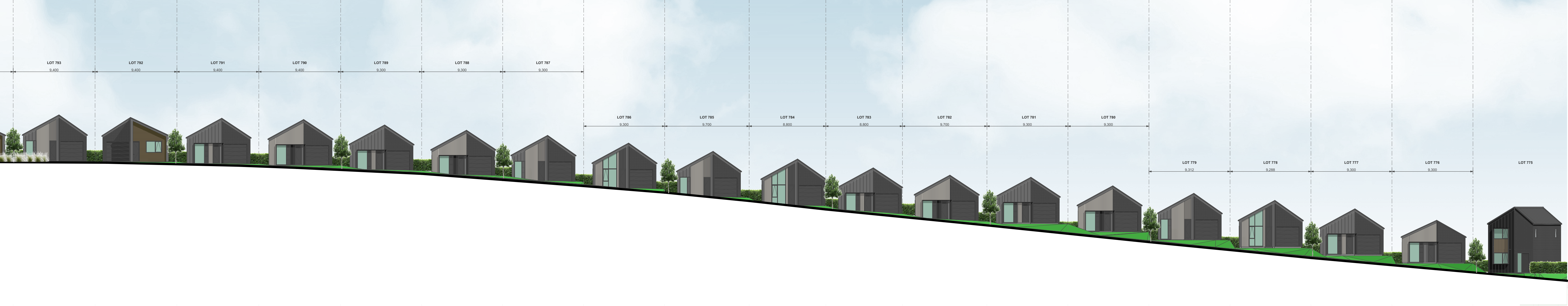
ELEVATION - STAGE 2A-2 - LOTS 776-797

1:100

| | |
|---------------|--|
| CLIENT | VINEWAY LIMITED |
| PROJECT NAME | DELMORE - STAGE 1 |
| DRAWING TITLE | ELEVATIONS - STAGE 2A-2 / LOTS - 776-797 |
| SCALE | 1:15000, 1:250, 1:100 |
| REVISION NO. | B |

DRAWING NO.

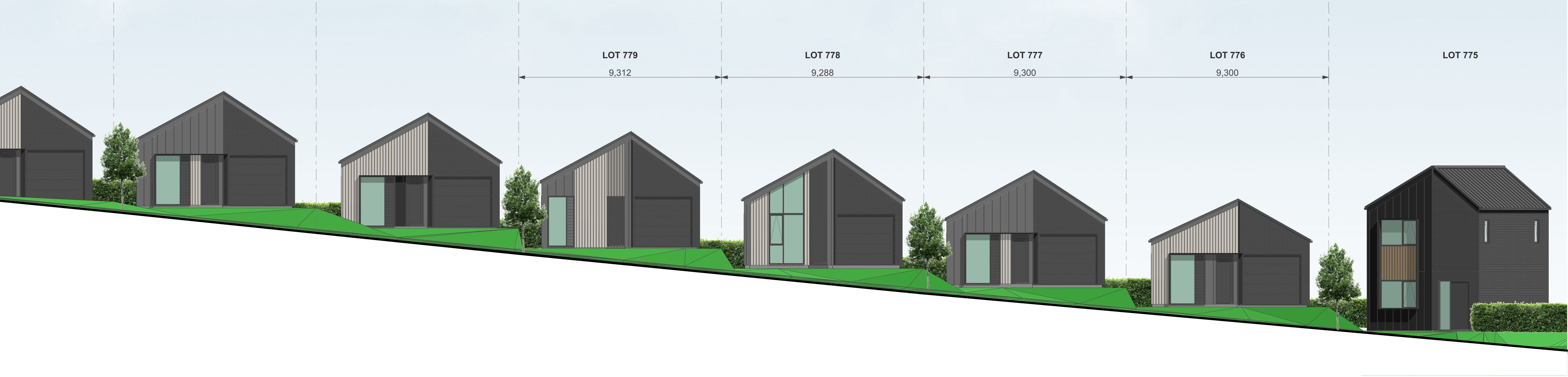
A-S2-2-34



2

ELEVATION - STAGE 2A-2 - LOTS 776-797

1:250



3

ELEVATION - STAGE 2A-2 - LOTS 776-797

1:100

TERRA STUDIO

PROJECT KEY

NOTES

LOT BOUNDARIES AND DIMENSIONS SHOWN ARE APPROXIMATE ONLY - ELEVATION PLANES DO NOT RUN PARALLEL TO ROAD FRONTAGES IN ALL CASES. FOR SPECIFIC INFORMATION, REFER TO THE CIVIL ENGINEER'S SCHEME PLANS.

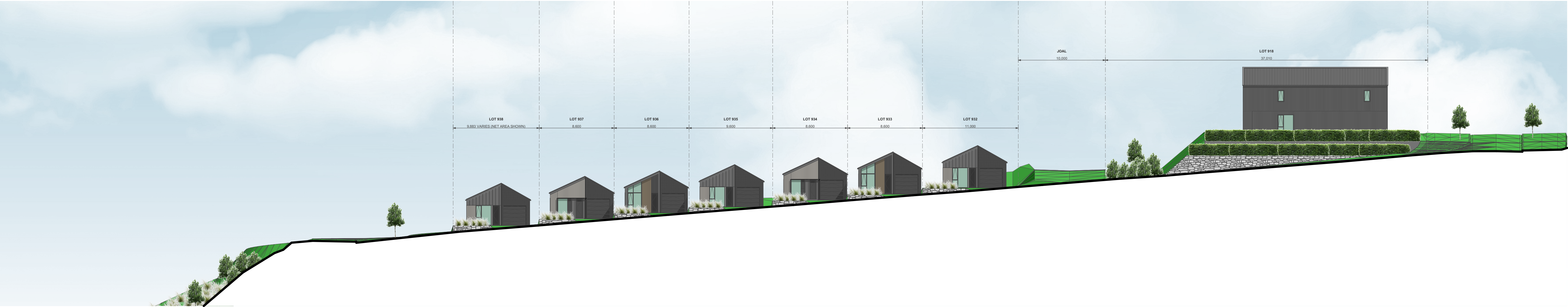
BOTH PRIVATE AND PUBLIC LANDSCAPE FEATURES SHOWN ARE INDICATIVE ONLY - FOR DETAILED DESIGN REFER TO THE LANDSCAPE ARCHITECT'S DRAWINGS.

3D MODEL TRIANGULATION MAY BE VISIBLE IN SOME AREAS - REFER TO THE CIVIL CONTOUR PLANS FOR CLARITY.

IN THE CASE OF ANY DISCREPANCIES BETWEEN THE ELEVATIONS SHOWN ON THIS SHEET AND THOSE REFERENCED IN THE TYPOLOGY PLAN BOOK, THE LATTER SHALL TAKE PRECEDENCE.

IN THE CASE OF ANY DISCREPANCIES BETWEEN THE LOT NUMBERS SHOWN ON THIS SHEET AND THOSE REFERENCED IN THE CIVIL ENGINEER'S SCHEME PLANS, THE LATTER SHALL TAKE PRECEDENCE.

| | |
|---------------|--|
| CLIENT | VINEWAY LIMITED |
| PROJECT NAME | DELMORE - STAGE 1 |
| DRAWING TITLE | ELEVATIONS - STAGE 2A-2 / LOTS 776-797 |
| SCALE | 1:15000, 1:250, 1:100 |
| REVISION NO. | B |
| | |
| DRAWING NO. | A-S2-2-35 |



2

ELEVATION - STAGE 2A-2 - LOTS 932-938

1:250



3

ELEVATION - STAGE 2A-2 - LOTS 932-938

1:100

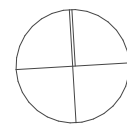


4

ELEVATION - STAGE 2A-2 - LOTS 932-938

1:100

TERRA STUDIO



PROJECT KEY

NOTES

LOT BOUNDARIES AND DIMENSIONS SHOWN ARE APPROXIMATE ONLY - ELEVATION PLANES DO NOT RUN PARALLEL TO ROAD FRONTAGES IN ALL CASES. FOR SPECIFIC INFORMATION, REFER TO THE CIVIL ENGINEER'S SCHEME PLANS.

BOTH PRIVATE AND PUBLIC LANDSCAPE FEATURES SHOWN ARE INDICATIVE ONLY - FOR DETAILED DESIGN REFER TO THE LANDSCAPE ARCHITECT'S DRAWINGS.

3D MODEL TRIANGULATION MAY BE VISIBLE IN SOME AREAS - REFER TO THE CIVIL CONTOUR PLANS FOR CLARITY.

IN THE CASE OF ANY DISCREPANCIES BETWEEN THE ELEVATIONS SHOWN ON THIS SHEET AND THOSE REFERENCED IN THE TYPOLOGY PLAN BOOK, THE LATTER SHALL TAKE PRECEDENCE.

IN THE CASE OF ANY DISCREPANCIES BETWEEN THE LOT NUMBERS SHOWN ON THIS SHEET AND THOSE REFERENCED IN THE CIVIL ENGINEER'S SCHEME PLANS, THE LATTER SHALL TAKE PRECEDENCE.

CLIENT VINEWAY LIMITED

PROJECT NAME DELMORE - STAGE 1

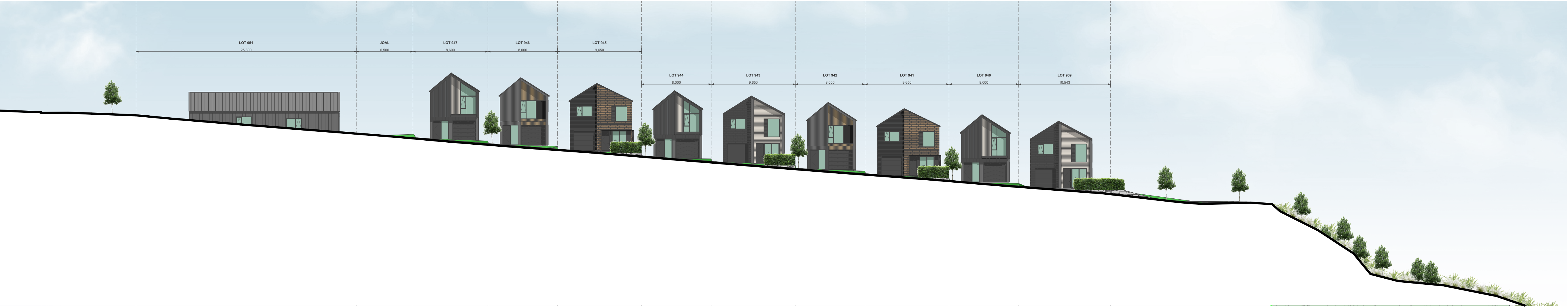
DRAWING TITLE ELEVATIONS - STAGE 2A-2 / LOTS 932-938

SCALE 1:15000, 1:250, 1:100

REVISION NO. B

DRAWING NO.

A-S2-2-36



2

ELEVATION - STAGE 2A-2 - LOTS 939-947

1:250

TERRA STUDIO



PROJECT KEY

NOTES

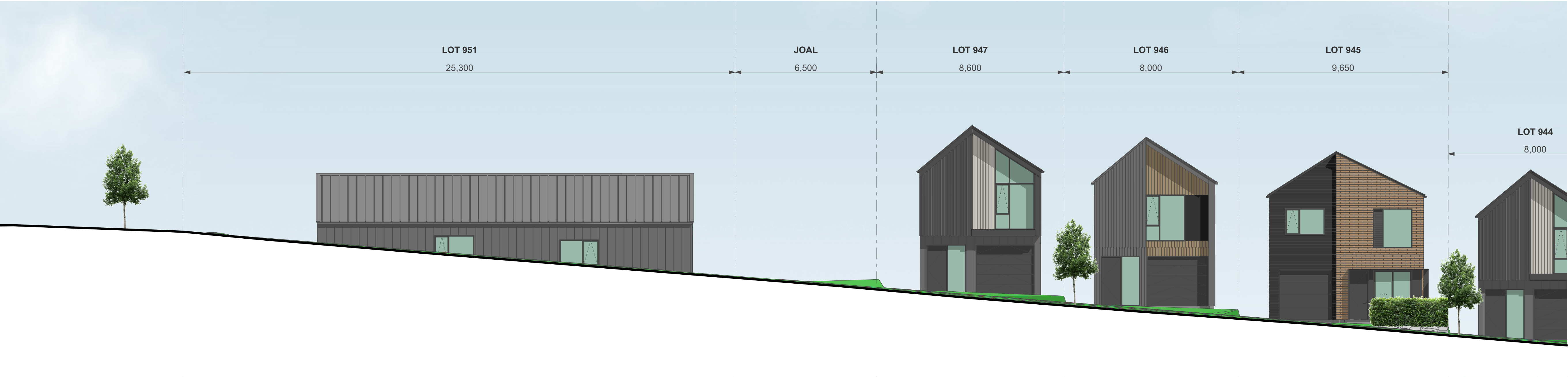
LOT BOUNDARIES AND DIMENSIONS SHOWN ARE APPROXIMATE ONLY - ELEVATION PLANES DO NOT RUN PARALLEL TO ROAD FRONTAGES IN ALL CASES. FOR SPECIFIC INFORMATION, REFER TO THE CIVIL ENGINEER'S SCHEME PLANS.

BOTH PRIVATE AND PUBLIC LANDSCAPE FEATURES SHOWN ARE INDICATIVE ONLY - FOR DETAILED DESIGN REFER TO THE LANDSCAPE ARCHITECT'S DRAWINGS.

3D MODEL TRIANGULATION MAY BE VISIBLE IN SOME AREAS - REFER TO THE CIVIL CONTOUR PLANS FOR CLARITY.

IN THE CASE OF ANY DISCREPANCIES BETWEEN THE ELEVATIONS SHOWN ON THIS SHEET AND THOSE REFERENCED IN THE TYPOLOGY PLAN BOOK, THE LATTER SHALL TAKE PRECEDENCE.

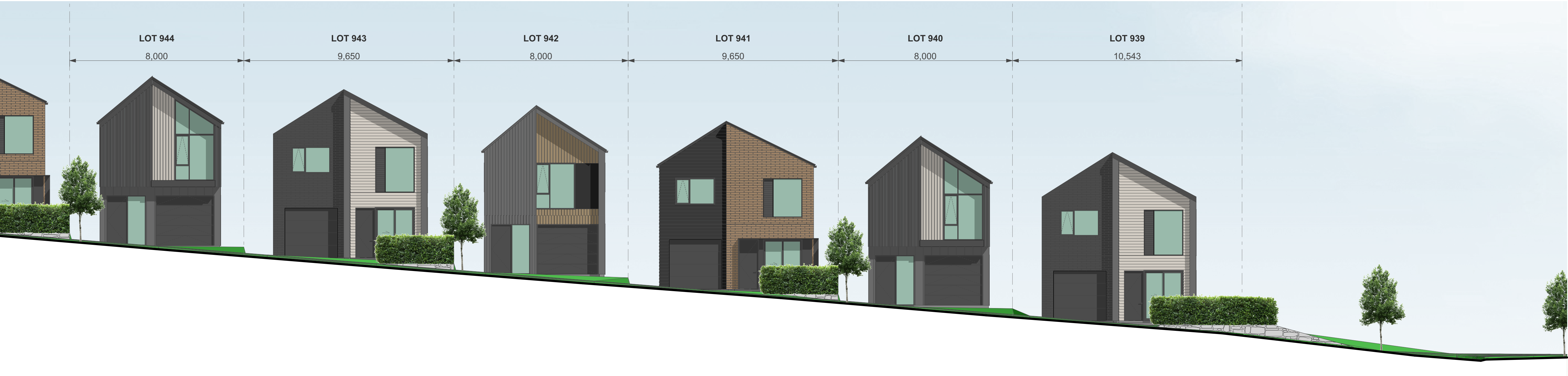
IN THE CASE OF ANY DISCREPANCIES BETWEEN THE LOT NUMBERS SHOWN ON THIS SHEET AND THOSE REFERENCED IN THE CIVIL ENGINEER'S SCHEME PLANS, THE LATTER SHALL TAKE PRECEDENCE.



3

ELEVATION - STAGE 2A-2 - LOTS 939-947

1:100



4

ELEVATION - STAGE 2A-2 - LOTS 939-947

1:100

| | |
|---------------|--|
| CLIENT | VINEWAY LIMITED |
| PROJECT NAME | DELMORE - STAGE 1 |
| DRAWING TITLE | ELEVATIONS - STAGE 2A-2 / LOTS 939-947 |
| SCALE | 1:15000, 1:250, 1:100 |
| REVISION NO. | B |

DRAWING NO.

A-S2-2-37