

**NOTES:**  
Confirm set out of all dimensions on site prior to commencing work.

Do not scale off of drawings.

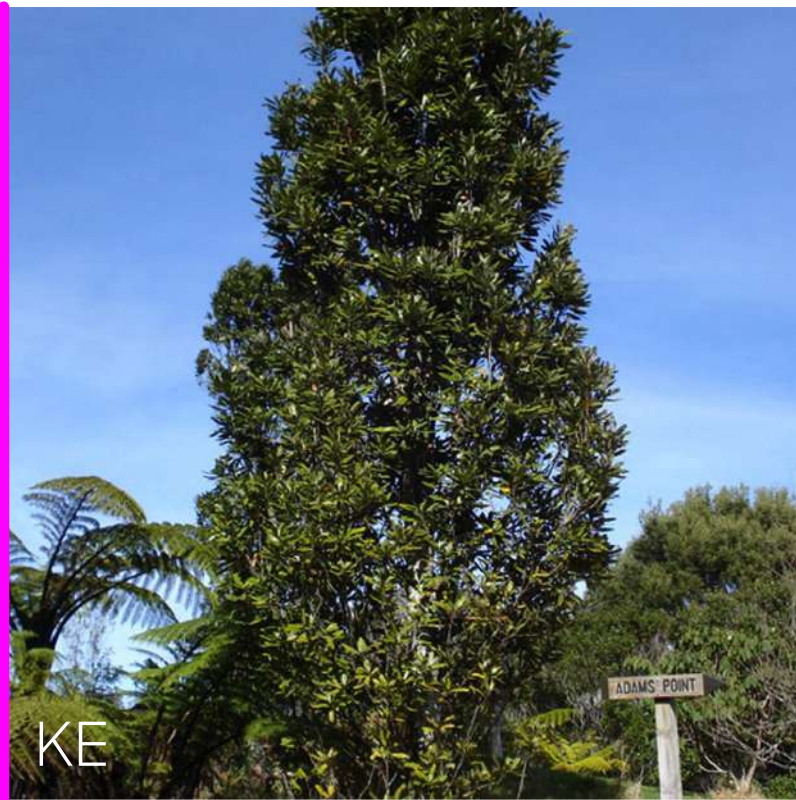
All drawings are in mm (unless specified)

All drawings are to be read in conjunction with Maven Civil plan set.

PLANT PALETTE



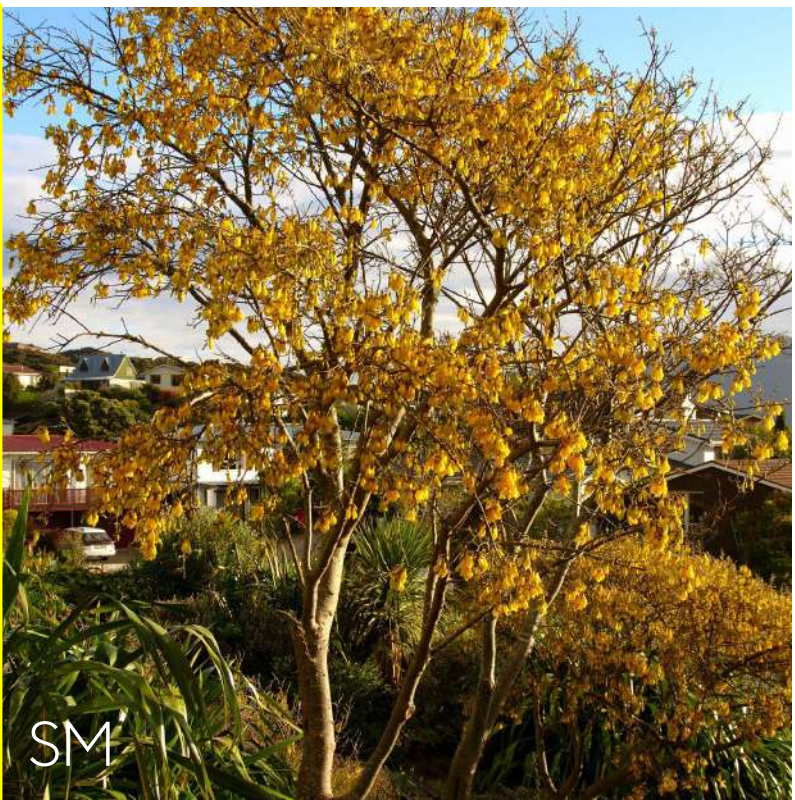
Dacrycarpus dacrydioides



Knightia excelsa



Laurelia novae-zelandiae



Sophora microphylla

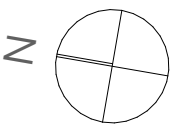
**LEGEND**  
Site Boundary

Code	Botanical Name	Common Name	Grade	Spacing	HxW Mature
	Tail Specimen Trees				
DD	<i>Dacrycarpus dacrydioides</i>	kahikatea	45L	as shown	50 x 5m
KE	<i>Knightia excelsa</i>	rewarewa	45L	as shown	15 x 3m
LN	<i>Laurelia novae-zelandiae</i>	pukatea	45L	as shown	10 x 4m
SM	<i>Sophora microphylla</i>	kōwhai	45L	as shown	8 x 3m
SZ	Screening Mix Zone - Max 5m High				
	5% <i>Austroderia fulvida</i>	toetoe	3L	1m	1.5 x 1.5m
	25% <i>Coprosma robusta</i>	karamu	3L	1m	5 x 4m
	10% <i>Coprosma propinqua</i>	mingimingi	3L	1m	5 x 2.5m
	5% <i>Leptospermum scoparium</i>	manuka	3L	1m	4 x 3m
	25% <i>Macropiper excelsum</i>	kawakawa	3L	1m	4 x 4m
	15% <i>Pittosporum tenuifolium</i>	kohuhu	3L	1m	5 x 3m
	5% <i>Phormium cookianum</i>	wharariki	3L	1m	1.5 x 1.5m
	10% <i>Myrsine australis</i>	red matipo	3L	1m	5 x 3m
AS	Amenity Shrub Mix Screening Zone - Under 2.5m High				
	15% <i>Astelia grandis</i>	swamp astelia	2L	1m	1.5 x 1.5m
	5% <i>Austroderia fulvida</i>	toetoe	2L	1m	1.5 x 1.5m
	15% <i>Carex virgata</i>	pukio	2L	1m	1 x 1m
	5% <i>Corokia buddleioides</i>	corokia	2L	1m	2 x 2m
	15% <i>Coprosma rhamnoides</i>	twiggy Coprosma	2L	1m	1.5 x 1m
	25% <i>Phormium cookianum</i>	wharariki	2L	1m	1.5 x 1.5m
	20% <i>Veronica stricta</i>	koromiko	2L	1m	2 x 1.5m

Client  
Unity Development

Project  
Ashbourne Development , Matamata, Waikato

Drawing  
2148/04 Northern Solar Farm – Overall Planting Plan



Scale  
1:1250@A1  
1:2,500@A3

Issue Date  
15/07/25  
Issue  
RC

Drawn  
BP  
Checked  
SW







PLANT PALETTE



Laurelia novae-zelandiae

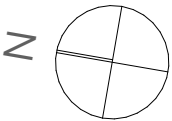


Sophora microphylla



Dacrycarpus dacrydioides

Code	Botanical Name	Common Name	Grade	Spacing	HxW Mature
Tall Specimen Trees					
DD	Dacrycarpus dacrydioides	kahikatea	45L	as shown	50 x 5m
KE	Knightia excelsa	rewarewa	45L	as shown	15 x 3m
LN	Laurelia novae-zelandiae	pukatea	45L	as shown	10 x 4m
SM	Sophora microphylla	kōwhai	45L	as shown	8 x 3m
SZ	Screening Mix Zone - Max 5m High				
5%	Austroderia fulvida	toetoe	3L	1m	1.5 x 1.5m
25%	Coprosma robusta	karamu	3L	1m	5 x 4m
10%	Coprosma propinqua	mingimingi	3L	1m	5 x 2.5m
5%	Leptospermum scoparium	manuka	3L	1m	4 x 3m
25%	Macropiper excelsum	kawakawa	3L	1m	4 x 4m
15%	Pittosporum tenuifolium	kohuhu	3L	1m	5 x 3m
5%	Phormium cookianum	wharariki	3L	1m	1.5 x 1.5m
10%	Myrsine australis	red matipo	3L	1m	5 x 3m
AS	Amenity Shrub Mix Screening Zone - Under 2.5m High				
15%	Astelia grandis	swamp astelia	2L	1m	1.5 x 1.5m
5%	Austroderia fulvida	toetoe	2L	1m	1.5 x 1.5m
15%	Carex virgata	pukio	2L	1m	1 x 1m
5%	Corokia buddleioides	corokia	2L	1m	2 x 2m
15%	Coprosma rhamnoides	twiggy Coprosma	2L	1m	1.5 x 1m
25%	Phormium cookianum	wharariki	2L	1m	1.5 x 1.5m
20%	Veronica stricta	koromiko	2L	1m	2 x 1.5m

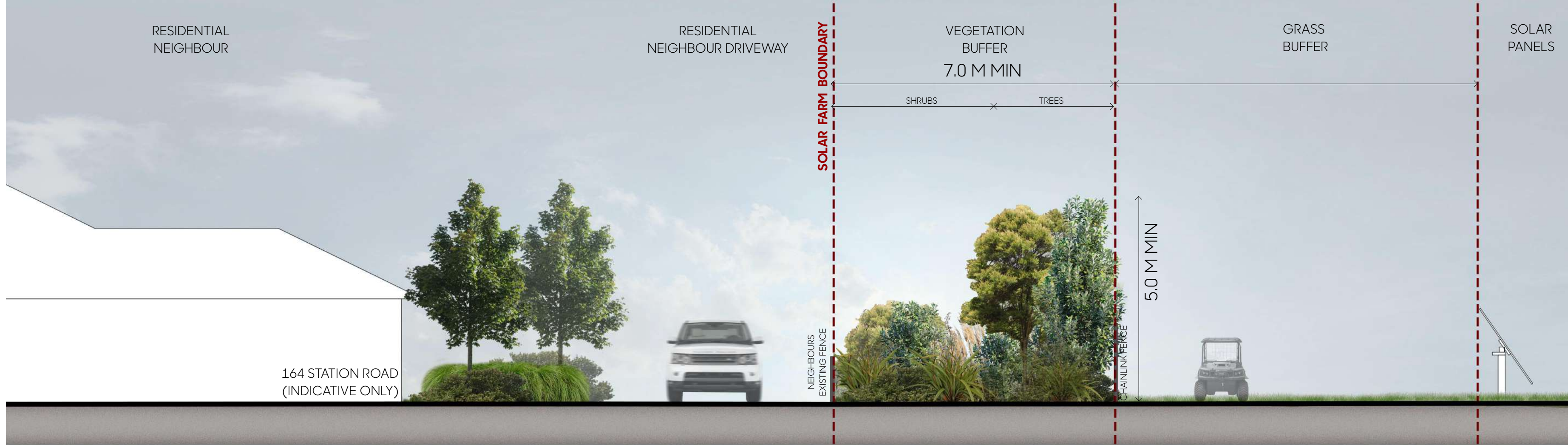




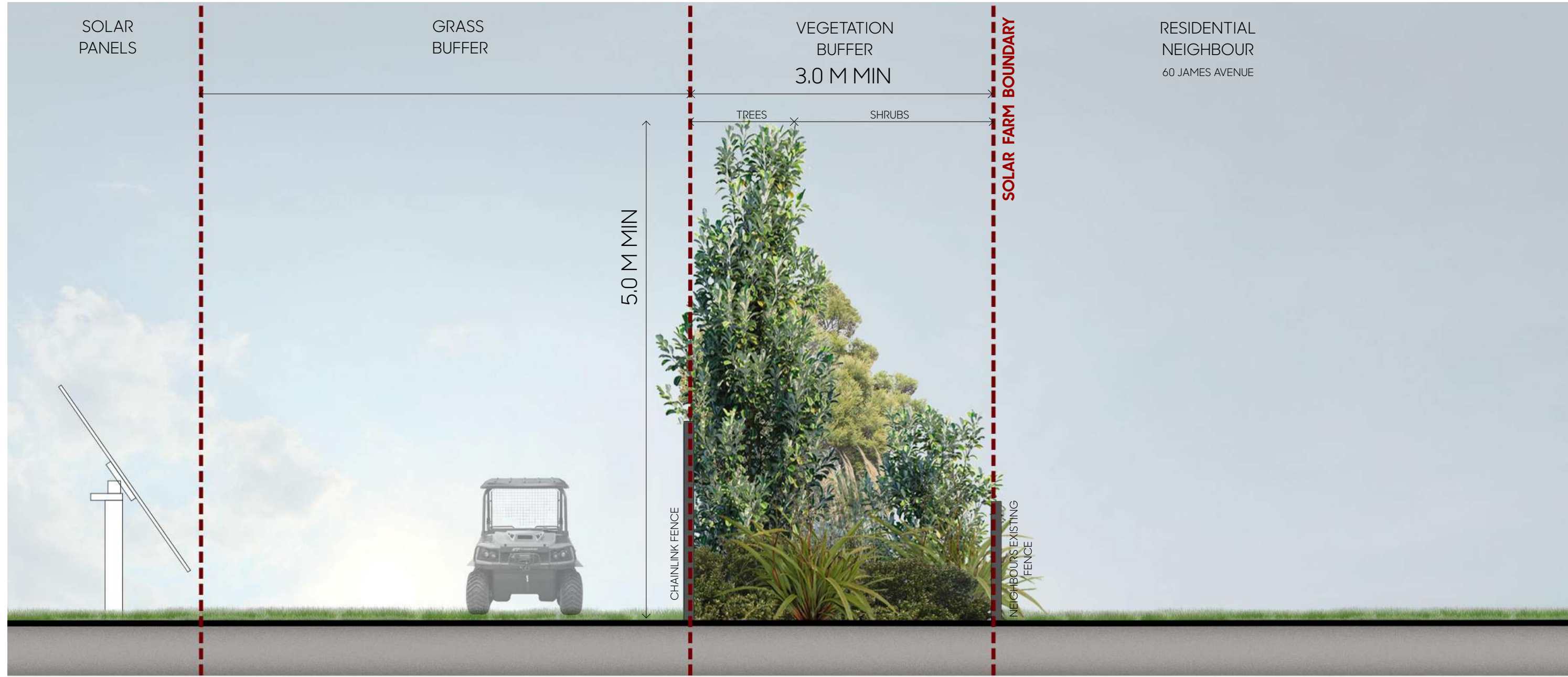
SECTION A-A 1:80@A1 / 1:160@A3  
NOTE: VEGETATION SHOWN AS INDICATIVE OF 10-YEAR MATURITY



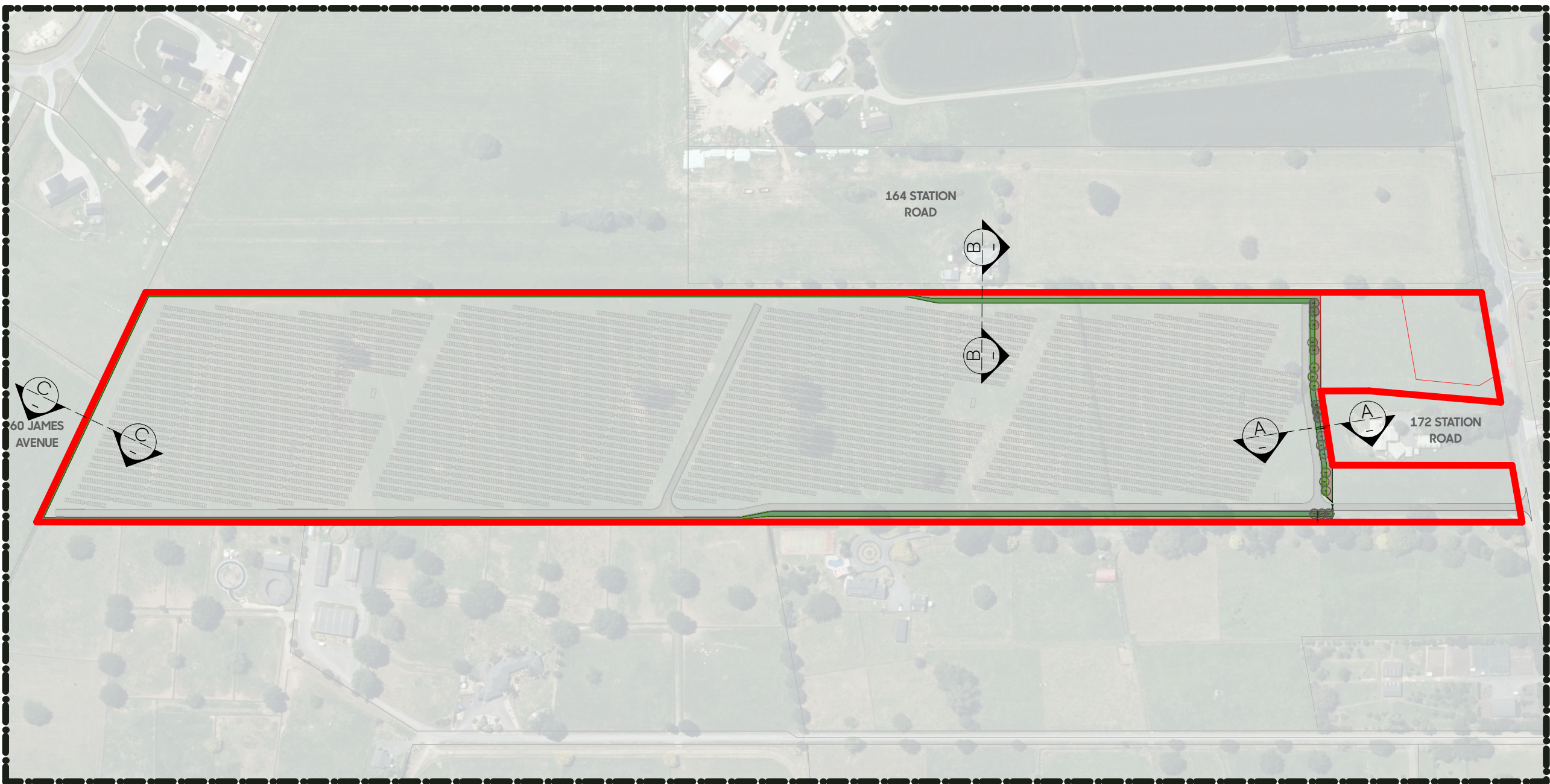
SECTION B-B 1:80@A1 / 1:160@A3  
NOTE: VEGETATION SHOWN AS INDICATIVE OF 10-YEAR MATURITY



SECTION C-C 1:40@A1 / 1:80@A3  
NOTE: VEGETATION SHOWN AS INDICATIVE OF 10-YEAR MATURITY



NORTHERN SOLAR FARM SECTION LOCATIONS 1:3,000@A1 / 1:6,000@A3





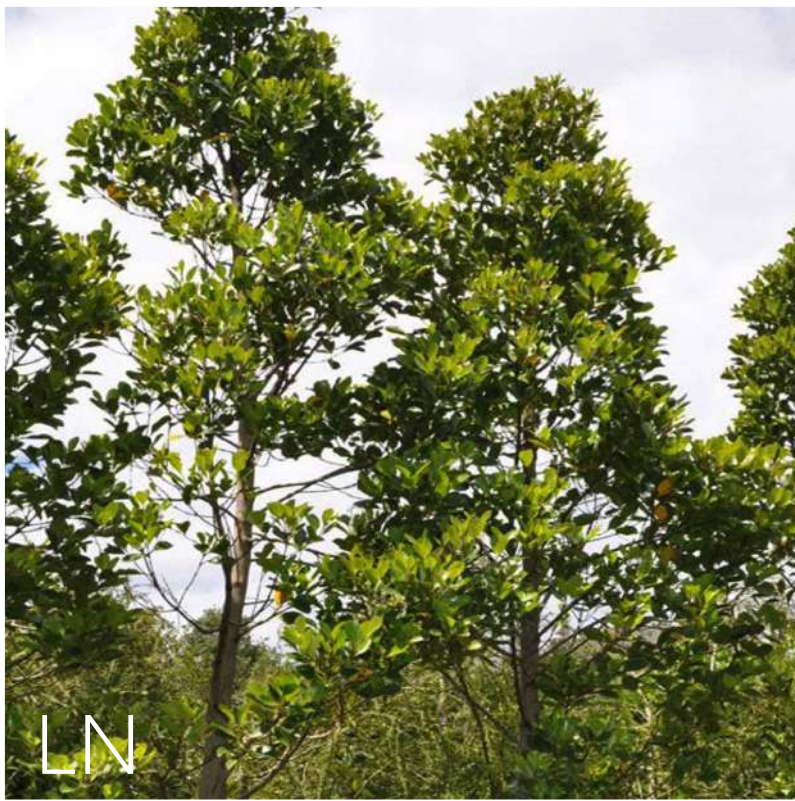
SPECIMEN TREES



*Dacrycarpus dacrydioides*



*Knightia excelsa*



*Laurelia novae-zelandiae*



*Sophora microphylla*

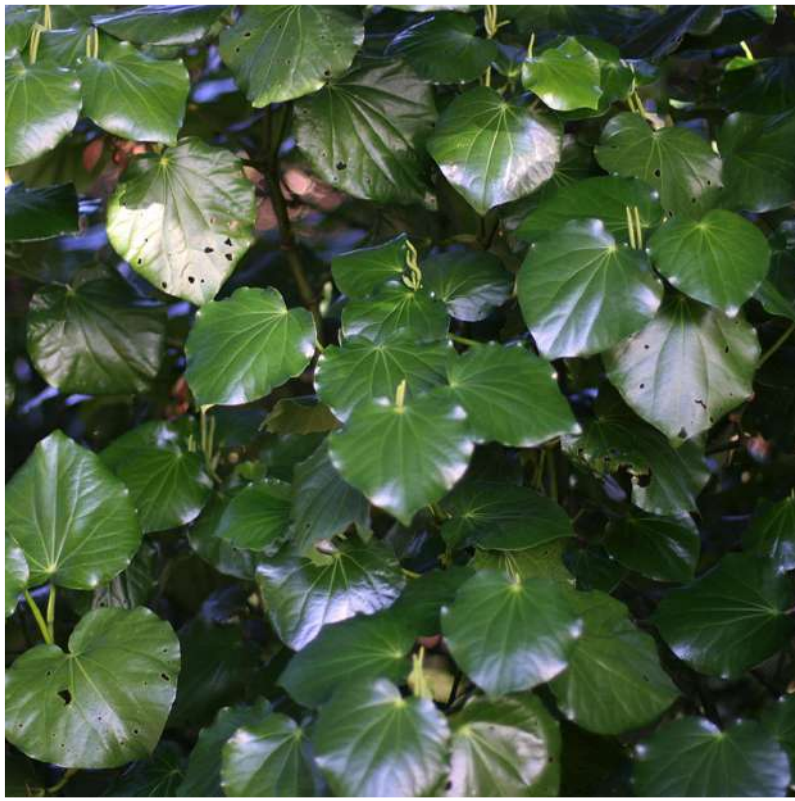
SCREENING MIX ZONE - MAX 5M HIGH (SZ)



*Coprosma robusta*



*Coprosma propinqua*



*Marcropiper exelsum*



*Leptospermum scoparium*



*Myrsine australis*



*Austroderia fulvida*

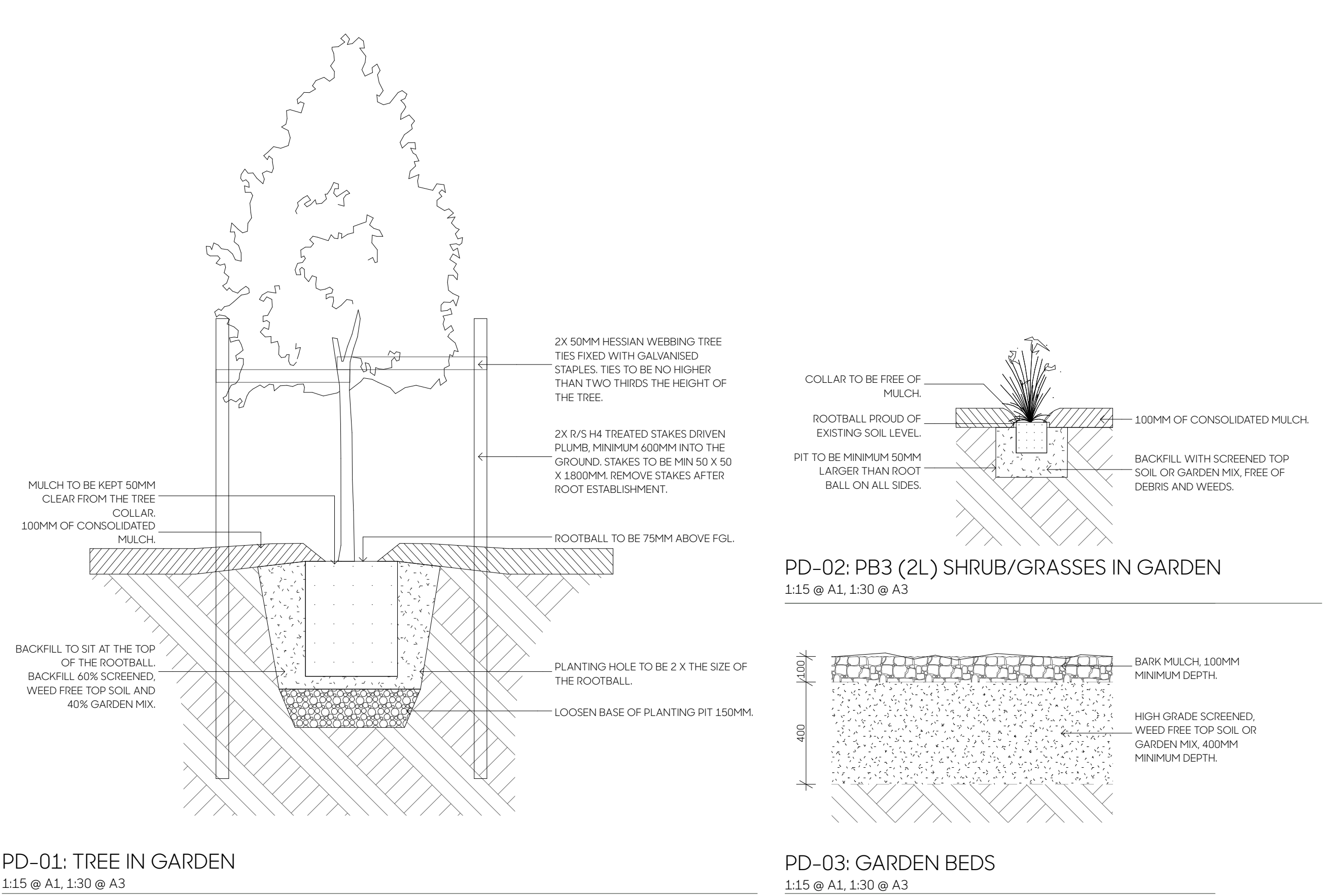


*Phormium cookianum*



*Pittosporum tenuifolium*

Code	Botanical Name	Common Name	Grade	Spacing	HxW Mature
Tall Specimen Trees					
DD	<i>Dacrycarpus dacrydioides</i>	kahikatea	45L	as shown	50 x 5m
KE	<i>Knightia excelsa</i>	rewarewa	45L	as shown	15 x 3m
LN	<i>Laurelia novae-zelandiae</i>	pukatea	45L	as shown	10 x 4m
SM	<i>Sophora microphylla</i>	kōwhai	45L	as shown	8 x 3m
SZ	Screening Mix Zone - Max 5m High				
	5% <i>Austroderia fulvida</i>	toetoe	3L	1m	1.5 x 1.5m
	25% <i>Coprosma robusta</i>	karamu	3L	1m	5 x 4m
	10% <i>Coprosma propinqua</i>	mingimingi	3L	1m	5 x 2.5m
	5% <i>Leptospermum scoparium</i>	manuka	3L	1m	4 x 3m
	25% <i>Macropiper excelsum</i>	kawakawa	3L	1m	4 x 4m
	15% <i>Pittosporum tenuifolium</i>	kohuhu	3L	1m	5 x 3m
	5% <i>Phormium cookianum</i>	wharariki	3L	1m	1.5 x 1.5m
	10% <i>Myrsine australis</i>	red matipo	3L	1m	5 x 3m
AS	Amenity Shrub Mix Screening Zone - Under 2.5m High				
	15% <i>Astelia grandis</i>	swamp astelia	2L	1m	1.5 x 1.5m
	5% <i>Austroderia fulvida</i>	toetoe	2L	1m	1.5 x 1.5m
	15% <i>Carex virgata</i>	pukio	2L	1m	1 x 1m
	5% <i>Corokia buddleioides</i>	corokia	2L	1m	2 x 2m
	15% <i>Coprosma rhamnoides</i>	twiggy Coprosma	2L	1m	1.5 x 1m
	25% <i>Phormium cookianum</i>	wharariki	2L	1m	1.5 x 1.5m
	20% <i>Veronica stricta</i>	koromiko	2L	1m	2 x 1.5m



AMENITY SHRUB MIX SCREENING ZONE - UNDER 2.5M HIGH (AS)



*Astelia grandis*



*Austroderia fulvida*



*Carex virgata*



*Corokia buddleioides*



*Coprosma rhamnoides*



*Phormium cookianum*



*Veronica stricta*



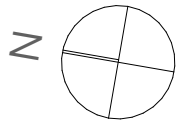
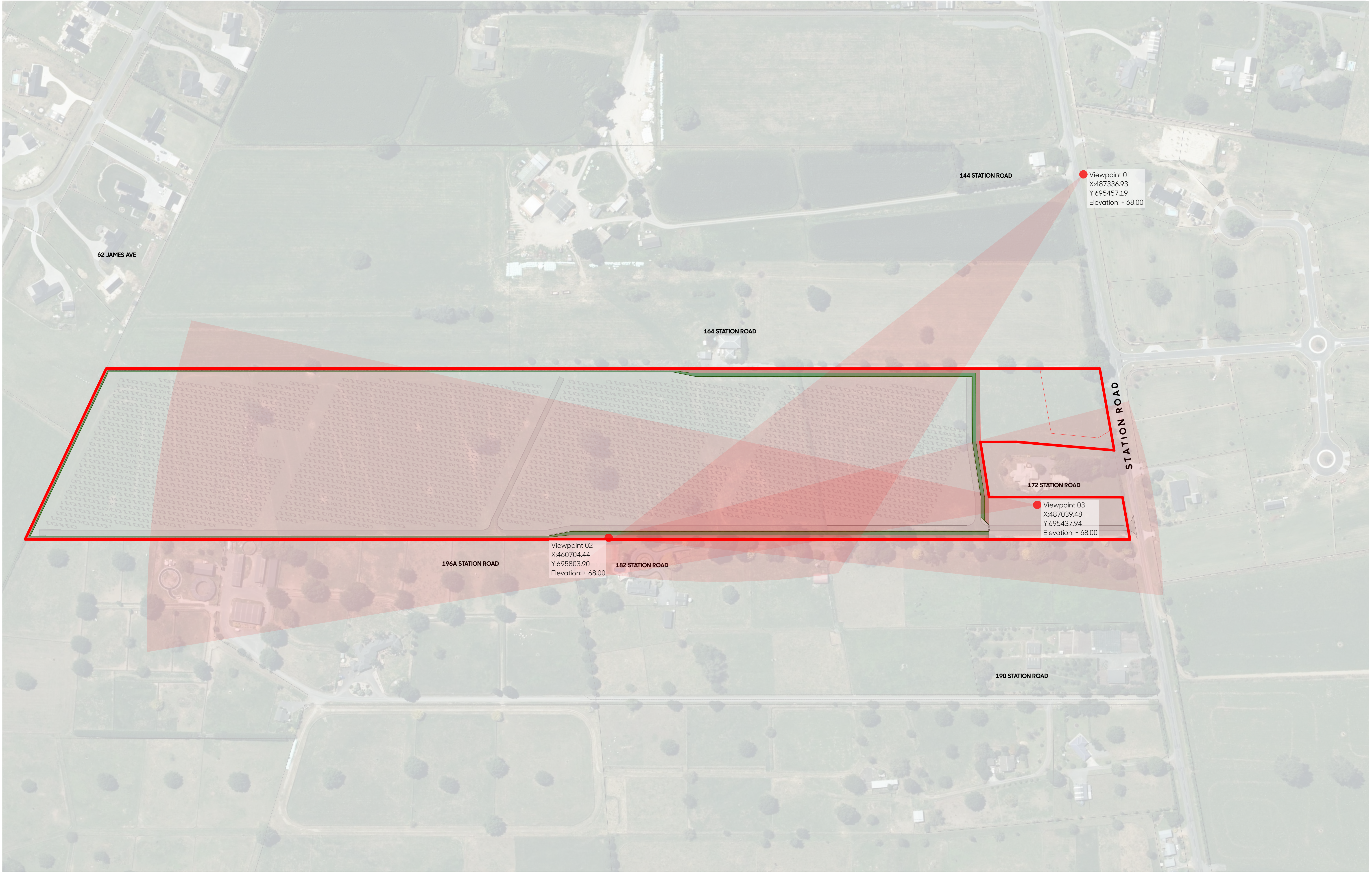










IMAGE SPECIFICATIONS:

- Camera Nikon D5100
- Sensor: CMOS 23.6x15.6mm
- Lens: AF-s NIKKON 18-55mm 1:3.5-5.6G Locked at 55mm Length
- Printed Image Size: 4928 x 3264mm
- Simulation Technique: Photomontage Produced in Photoshop using scale model rendered in ArchiCad
- Image Viewing Distance: 500mm from eye at A3
- Distance to Site: Approx. 234m
- Co-ordinates Mt Eden 2000: X:487336.93 Y:695457.19
- Elevation: + 68.00m
- Image Date: 8th November 2024

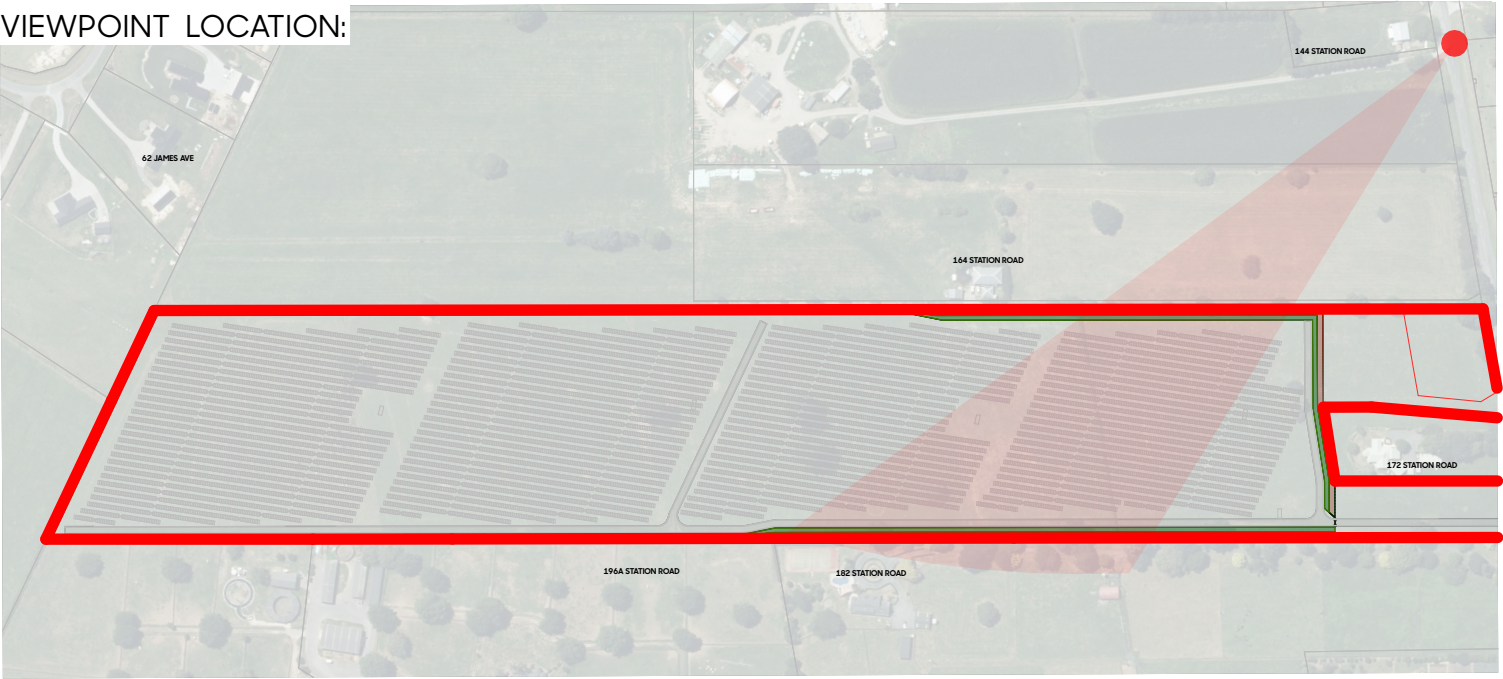
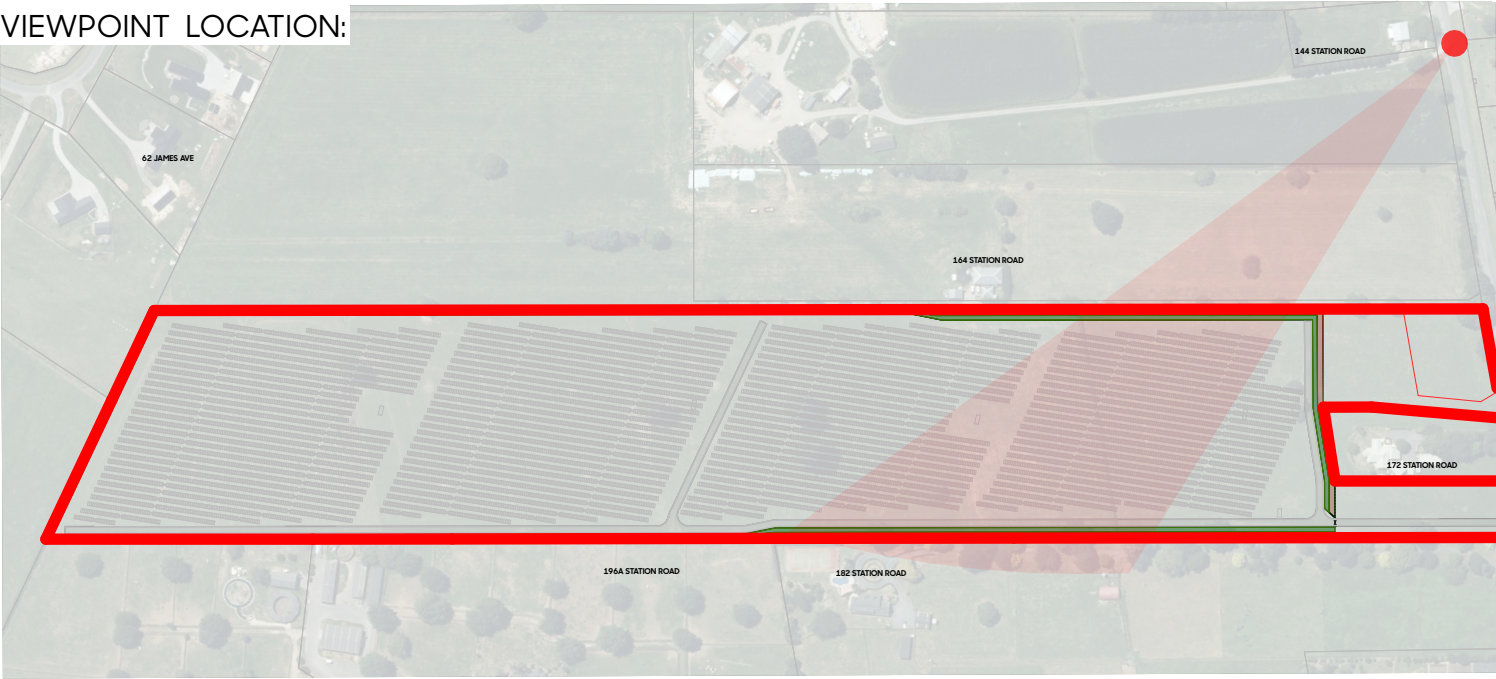






IMAGE SPECIFICATIONS:

- Camera Nikon D5100
- Sensor: CMOS 23.6x15.6mm
- Lens: AF-s NIKKON 18-55mm 1:3.5-5.6G Locked at 55mm Length
- Printed Image Size: 4928 x 3264mm
- Simulation Technique: Photomontage Produced in Photoshop using scale model rendered in ArchiCad
- Image Viewing Distance: 500mm from eye at A3
- Distance to Site: Approx. 234m
- Co-ordinates Mt Eden 2000: X:487336.93 Y:695457.19
- Elevation: + 68.00m
- Image Date: 8th November 2024



Client  
Unity Development

Project  
Ashbourne Development , Matamata, Waikato

Drawing  
2148/11 Northern Solar Farm – Viewpoint 01 – 5 Years

Issue Date  
15/07/25  
Issue  
RC

Drawn  
BP  
Checked  
SW







IMAGE SPECIFICATIONS:

- Camera Nikon D5100
- Sensor: CMOS 23.6x15.6mm
- Lens: AF-s NIKKON 18-55mm 1:3.5-5.6G Locked at 55mm Length
- Printed Image Size: 4928 x 3264mm
- Simulation Technique: Photomontage Produced in Photoshop using scale model rendered in ArchiCad
- Image Viewing Distance: 500mm from eye at A3
- Distance to Site: Approx. 234m
- Co-ordinates Mt Eden 2000: X:487336.93 Y:695457.19
- Elevation: + 68.00m
- Image Date: 8th November 2024

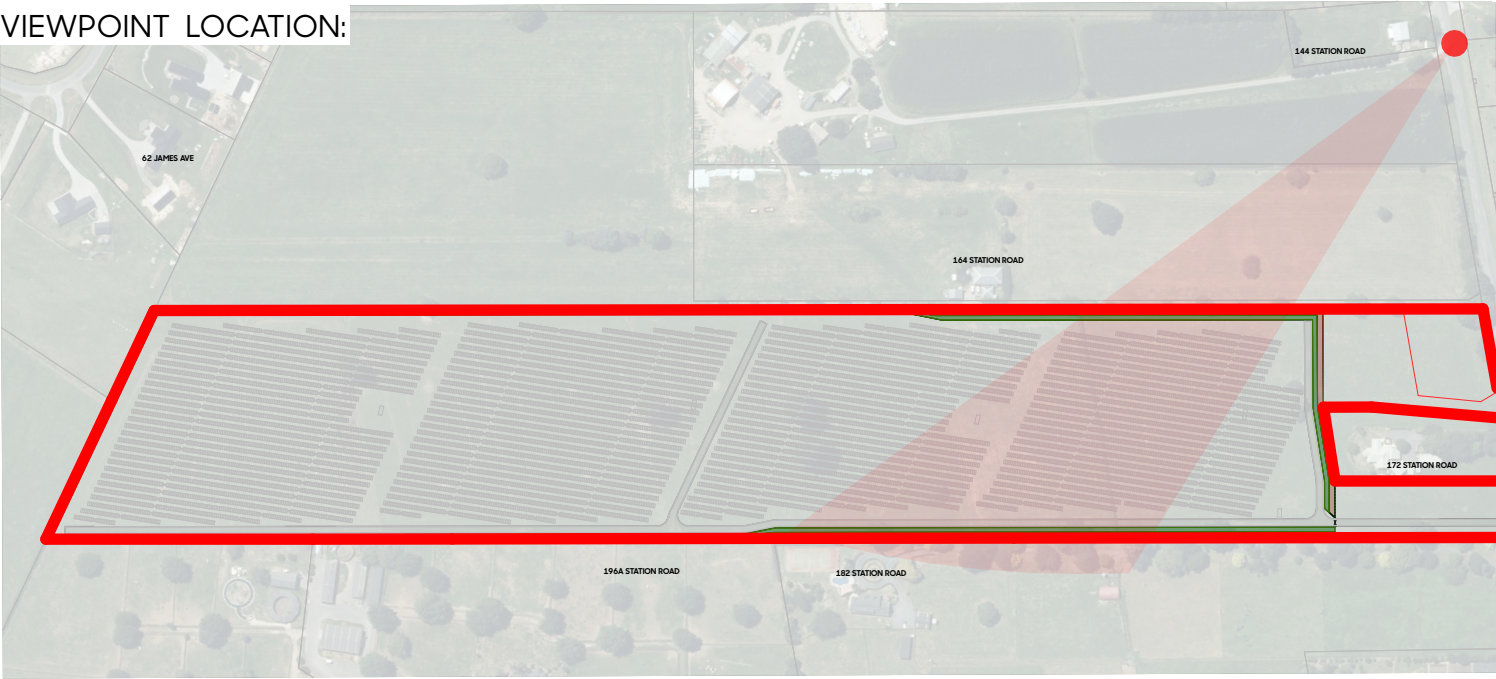






IMAGE SPECIFICATIONS:

- Camera Nikon D5100
- Sensor: CMOS 23.6x15.6mm
- Lens: AF-s NIKKON 18-55mm 1:3.5-5.6G Locked at 55mm Length
- Printed Image Size: 4928 x 3264mm
- Image Viewing Distance: 500mm from eye at A3
- Distance to Site: Within site boundary
- Co-ordinates Mt Eden 2000: X:487336.93 Y:695457.19
- Elevation: + 68.00m
- Image Date: 8th November 2024







IMAGE SPECIFICATIONS:

- Camera Nikon D5100
- Sensor: CMOS 23.6x15.6mm
- Lens: AF-s NIKKON 18-55mm 1:3.5-5.6G Locked at 55mm Length
- Printed Image Size: 4928 x 3264mm
- Simulation Technique: Photomontage Produced in Photoshop using scale model rendered in ArchiCad
- Image Viewing Distance: 500mm from eye at A3
- Distance to Site: Within site boundary
- Co-ordinates Mt Eden 2000: X:487336.93 Y:695457.19
- Elevation: + 68.00m
- Image Date: 8th November 2024

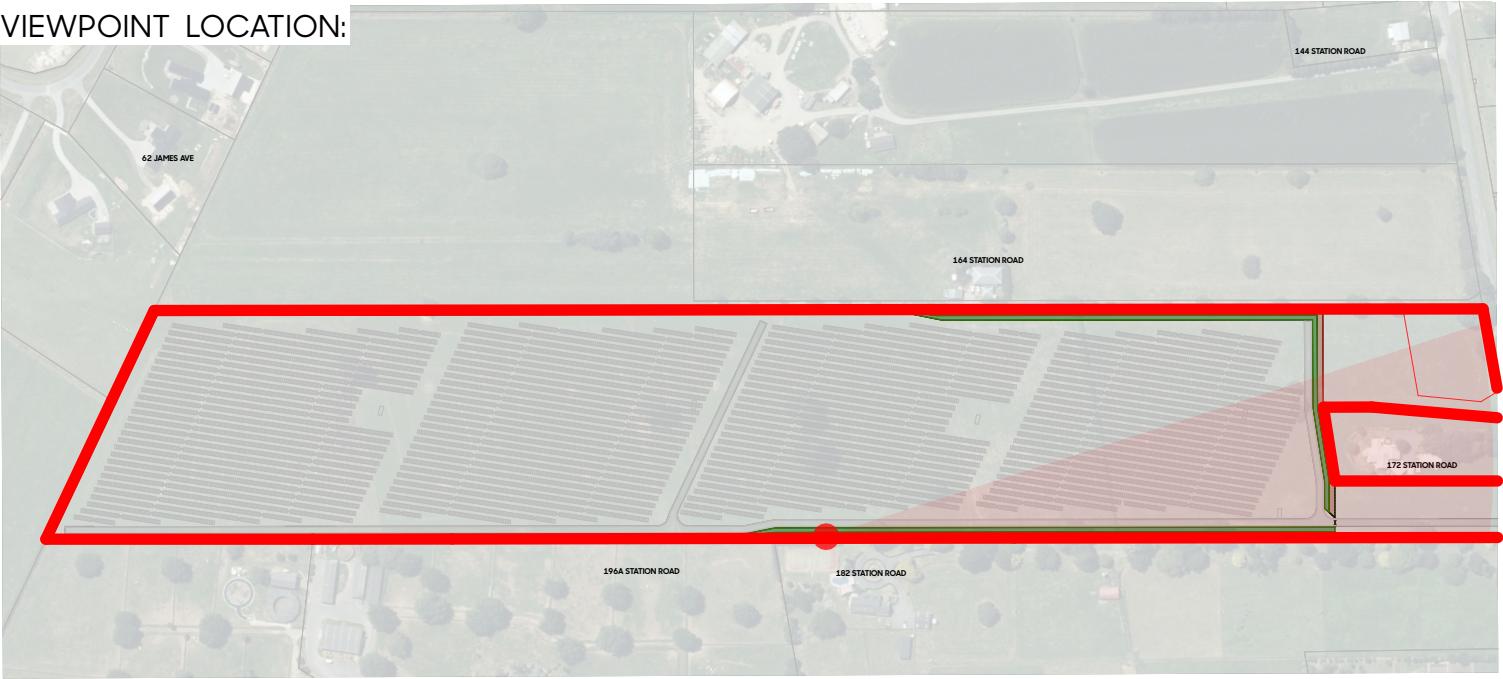
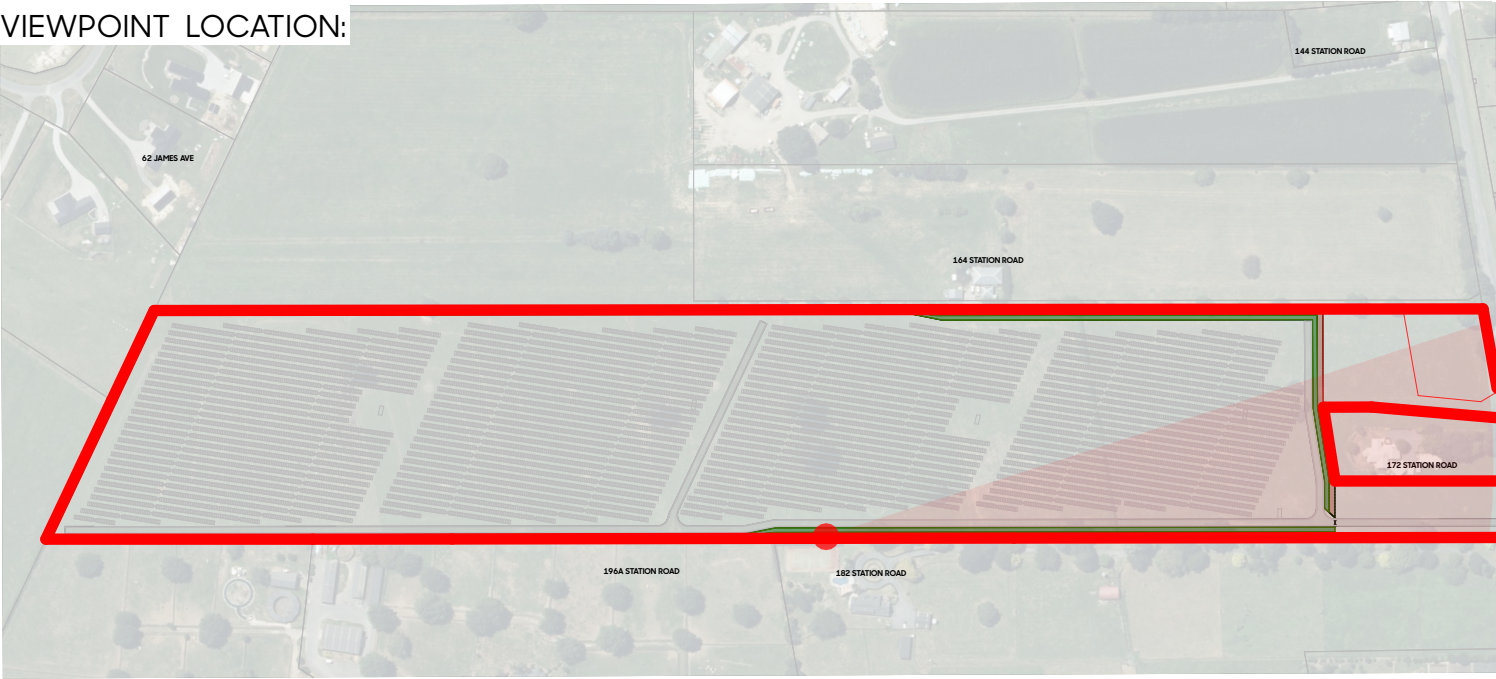






IMAGE SPECIFICATIONS:

- Camera Nikon D5100
- Sensor: CMOS 23.6x15.6mm
- Lens: AF-s NIKKON 18-55mm 1:3.5-5.6G Locked at 55mm Length
- Printed Image Size: 4928 x 3264mm
- Simulation Technique: Photomontage Produced in Photoshop using scale model rendered in ArchiCad
- Image Viewing Distance: 500mm from eye at A3
- Distance to Site: Within site boundary
- Co-ordinates Mt Eden 2000: X:487336.93 Y:695457.19
- Elevation: + 68.00m
- Image Date: 8th November 2024







OPAQUE PLANTING TO DEMONSTRATE LOCATION OF SOLAR FARM FENCE AND THE IMPACT THE SCREEN PLANTING WILL HAVE AFTER 5 YEARS

IMAGE SPECIFICATIONS:

- Camera Nikon D5100
- Sensor: CMOS 23.6x15.6mm
- Lens: AF-s NIKKON 18-55mm 1:3.5-5.6G Locked at 55mm Length
- Printed Image Size: 4928 x 3264mm
- Simulation Technique: Photomontage Produced in Photoshop using scale model rendered in ArchiCad
- Image Viewing Distance: 500mm from eye at A3
- Distance to Site: Within site boundary
- Co-ordinates Mt Eden 2000: X:487336.93 Y:695457.19
- Elevation: + 68.00m
- Image Date: 8th November 2024

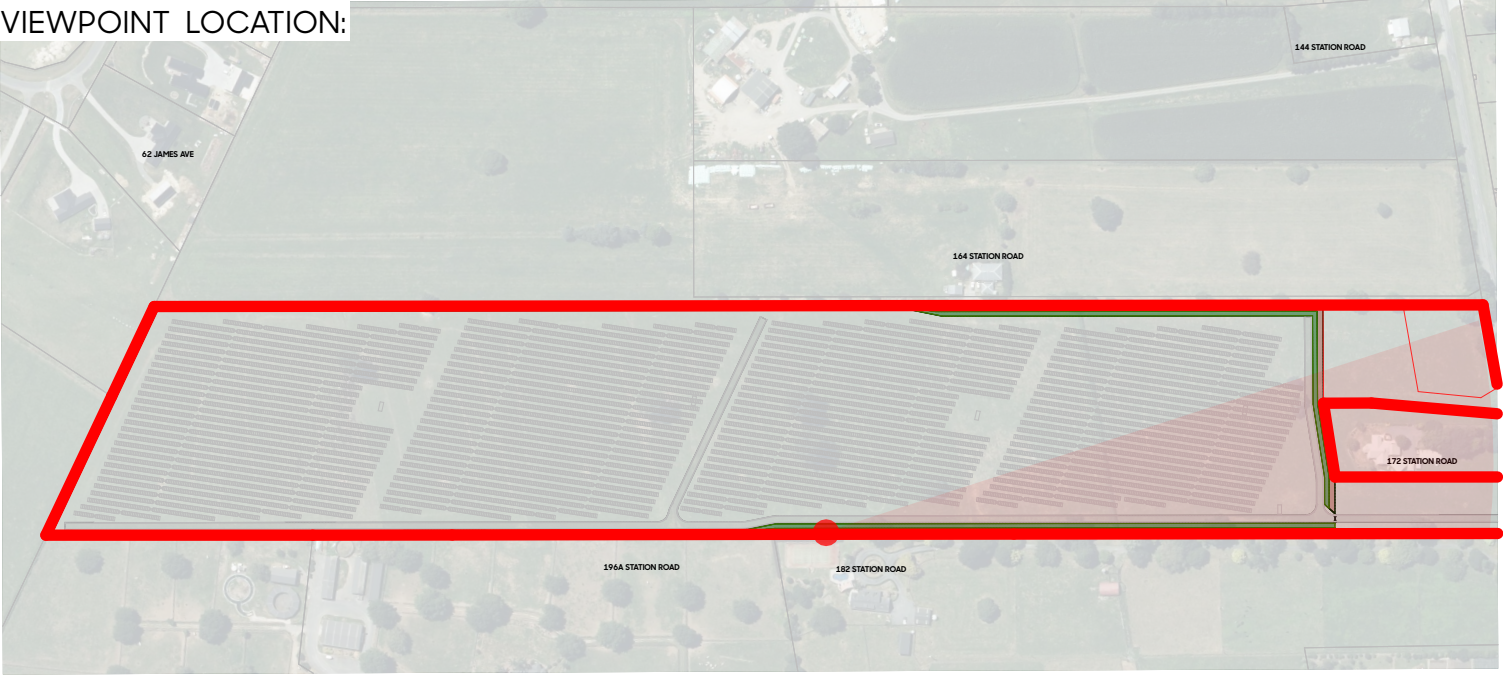






IMAGE SPECIFICATIONS: - Camera Nikon D5100  
- Sensor: CMOS 23.6x15.6mm  
- Lens: AF-s NIKKON 18-55mm 1:3.5-5.6G Locked at 55mm Length  
- Printed Image Size: 4928 x 3264mm  
- Simulation Technique: Photomontage Produced in Photoshop using scale model rendered in ArchiCad  
- Image Viewing Distance: 500mm from eye at A3  
- Distance to Site: Within site boundary  
- Co-ordinates Mt Eden 2000: X:487336.93 Y:695457.19  
- Elevation: + 68.00m  
- Image Date: 8th November 2024

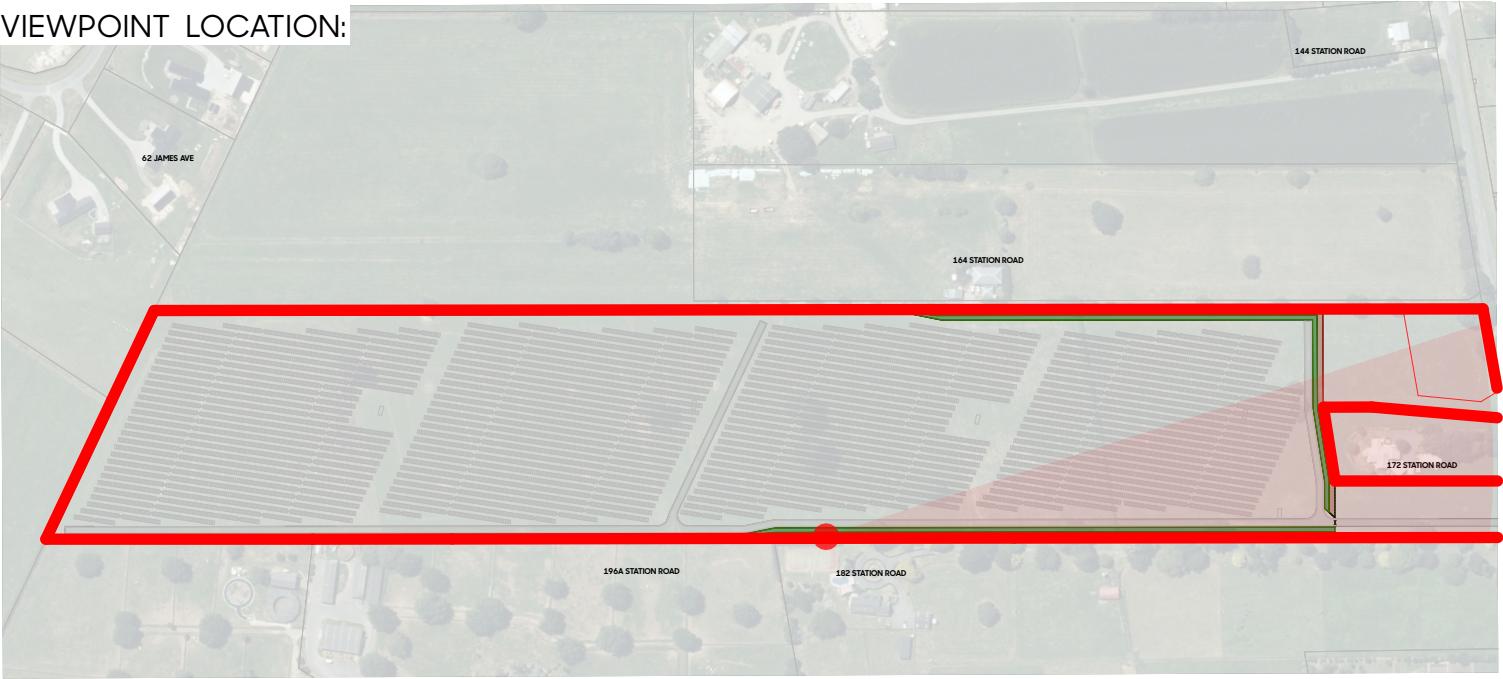






IMAGE SPECIFICATIONS:

- Camera Nikon D5100
- Sensor: CMOS 23.6x15.6mm
- Lens: AF-s NIKKON 18-55mm 1:3.5-5.6G Locked at 55mm Length
- Printed Image Size: 4928 x 3264mm
- Image Viewing Distance: 500mm from eye at A3
- Distance to Site: Approx. 43m
- Co-ordinates Mt Eden 2000: X:487039.48 Y:695437.94
- Elevation: + 68.00m
- Image Date: 21st May 2025

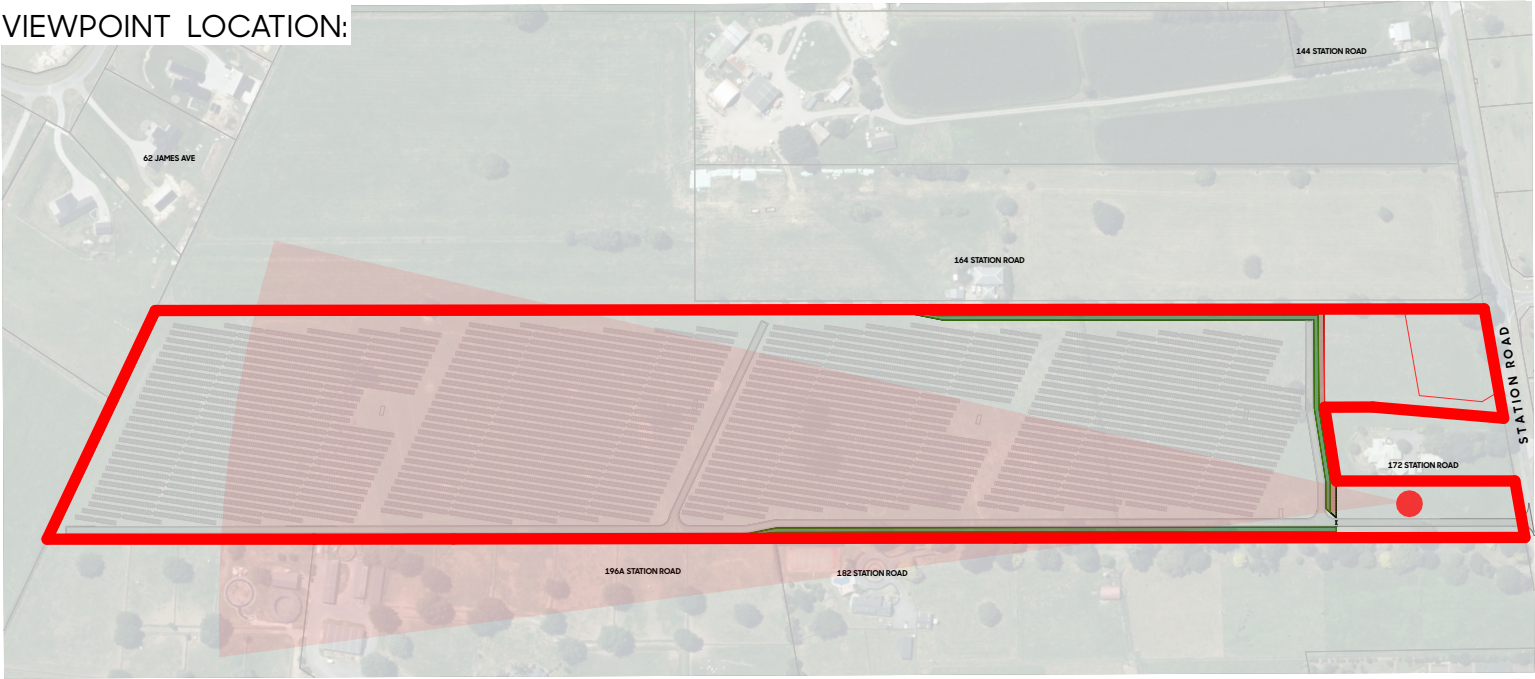






IMAGE SPECIFICATIONS:

- Camera Nikon D5100
- Sensor: CMOS 23.6x15.6mm
- Lens: AF-s NIKKON 18-55mm 1:3.5-5.6G Locked at 55mm Length
- Printed Image Size: 4928 x 3264mm
- Simulation Technique: Photomontage Produced in Photoshop using scale model rendered in ArchiCad
- Image Viewing Distance: 500mm from eye at A3
- Distance to Site: Approx. 43m
- Co-ordinates Mt Eden 2000: X:487039.48 Y:695437.94
- Elevation: + 68.00m
- Image Date: 21st May 2025

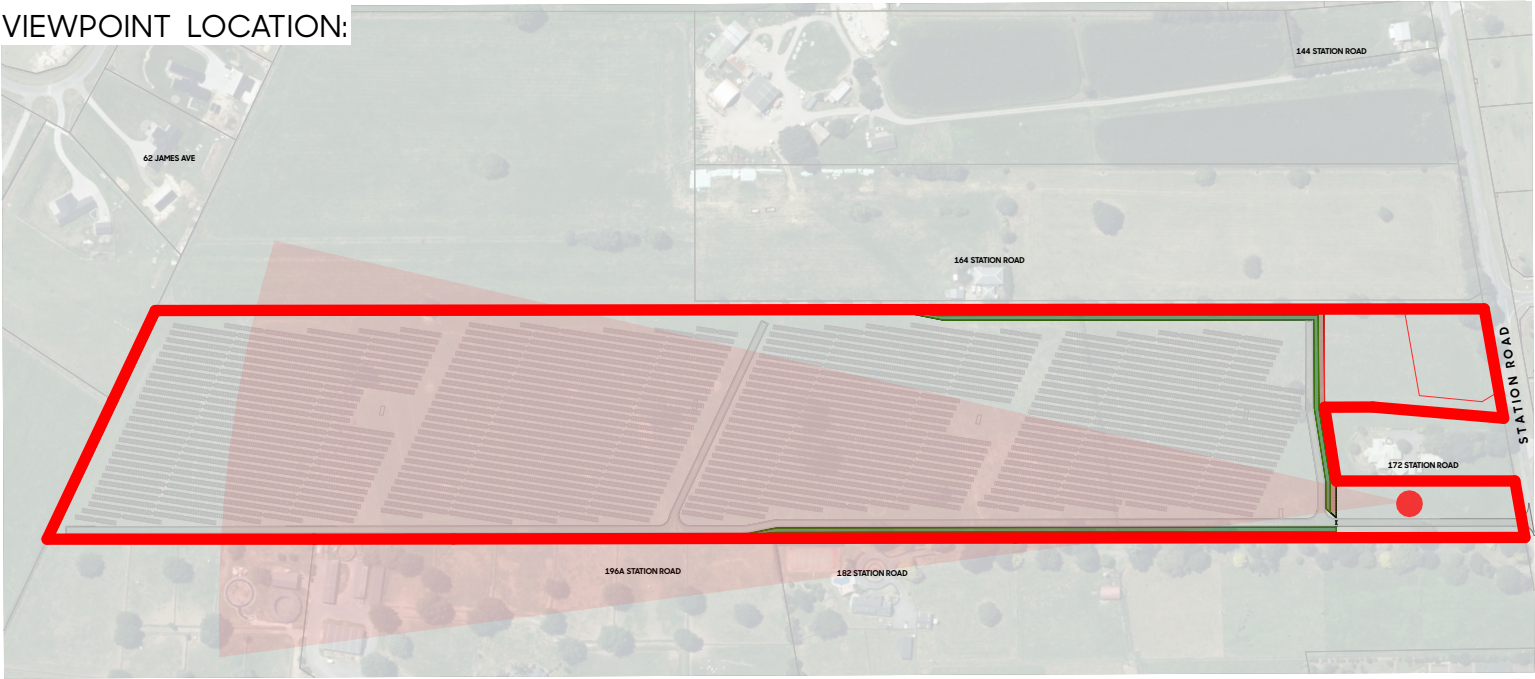






IMAGE SPECIFICATIONS:

- Camera Nikon D5100
- Sensor: CMOS 23.6x15.6mm
- Lens: AF-s NIKKON 18-55mm 1:3.5-5.6G Locked at 55mm Length
- Printed Image Size: 4928 x 3264mm
- Simulation Technique: Photomontage Produced in Photoshop using scale model rendered in ArchiCad
- Image Viewing Distance: 500mm from eye at A3
- Distance to Site: Approx. 43m
- Co-ordinates Mt Eden 2000: X:487039.48 Y:695437.94
- Elevation: + 68.00m
- Image Date: 21st May 2025

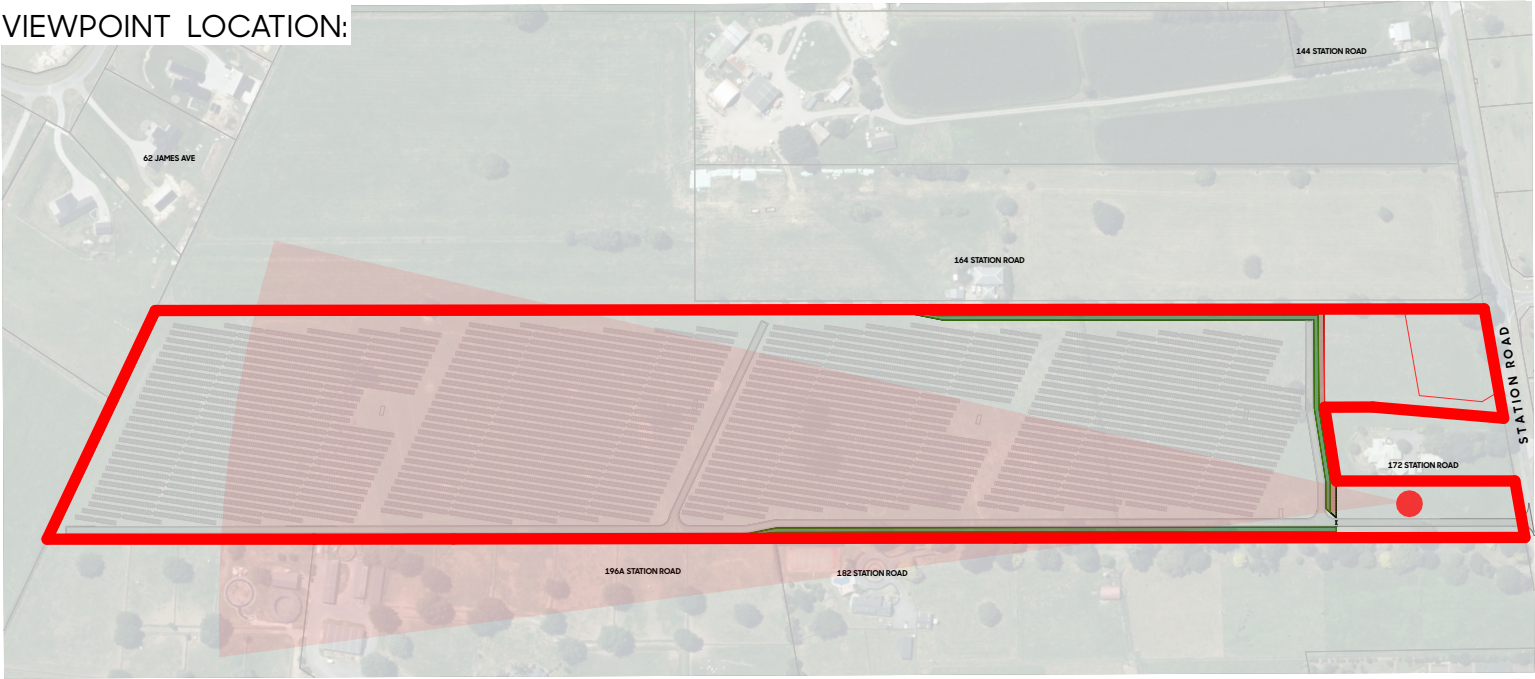






IMAGE SPECIFICATIONS: - Camera Nikon D5100  
- Sensor: CMOS 23.6x15.6mm  
- Lens: AF-s NIKKON 18-55mm 1:3.5-5.6G Locked at 55mm Length  
- Printed Image Size: 4928 x 3264mm  
- Simulation Technique: Photomontage Produced in Photoshop using scale model rendered in ArchiCad  
- Image Viewing Distance: 500mm from eye at A3  
- Distance to Site: Approx. 43m  
- Co-ordinates Mt Eden 2000: X:487039.48 Y:695437.94  
- Elevation: + 68.00m  
- Image Date: 21st May 2025

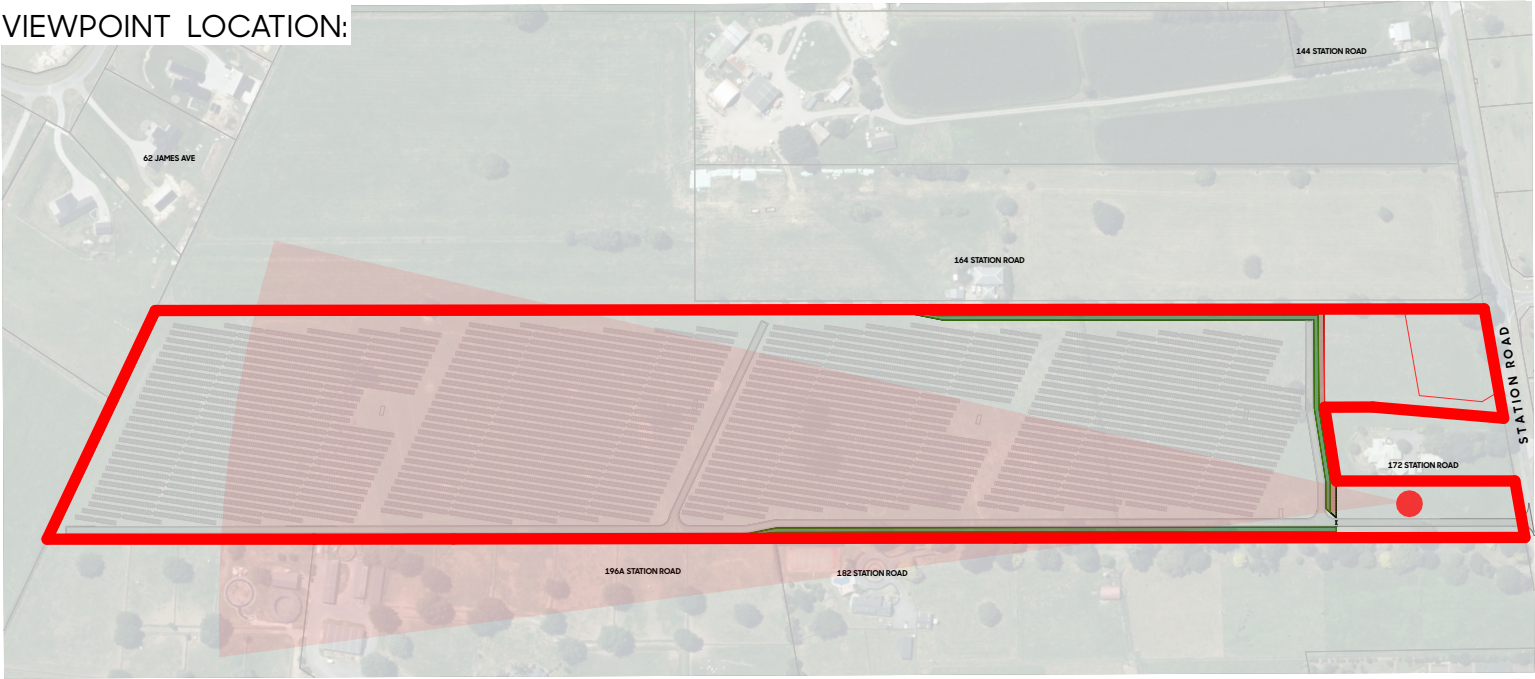






IMAGE SPECIFICATIONS: - Camera Nikon D5100  
- Sensor: CMOS 23.6x15.6mm  
- Lens: AF-s NIKKON 18-55mm 1:3.5-5.6G Locked at 55mm Length  
- Printed Image Size: 4928 x 3264mm  
- Image Viewing Distance: 500mm from eye at A3  
- Distance to Site: Approx. 63m  
- Co-ordinates Mt Eden 2000: X:486354.69 Y:694659.94  
- Elevation: + 68.75m  
- Image Date: 8th November 2024

