

- Legend**
- Project Extent
 - Contour Post Dev 1m
 - Contour Post Dev 5m
- Afflux ARR Hazard 100yrCC
Band 1 (Gray)**
- Reduction by 3
 - Reduction by 2
 - Reduction by 1
 - No changes
 - Increase by 1
 - Increase by 2
 - Increase by 3
 - Larger than 3

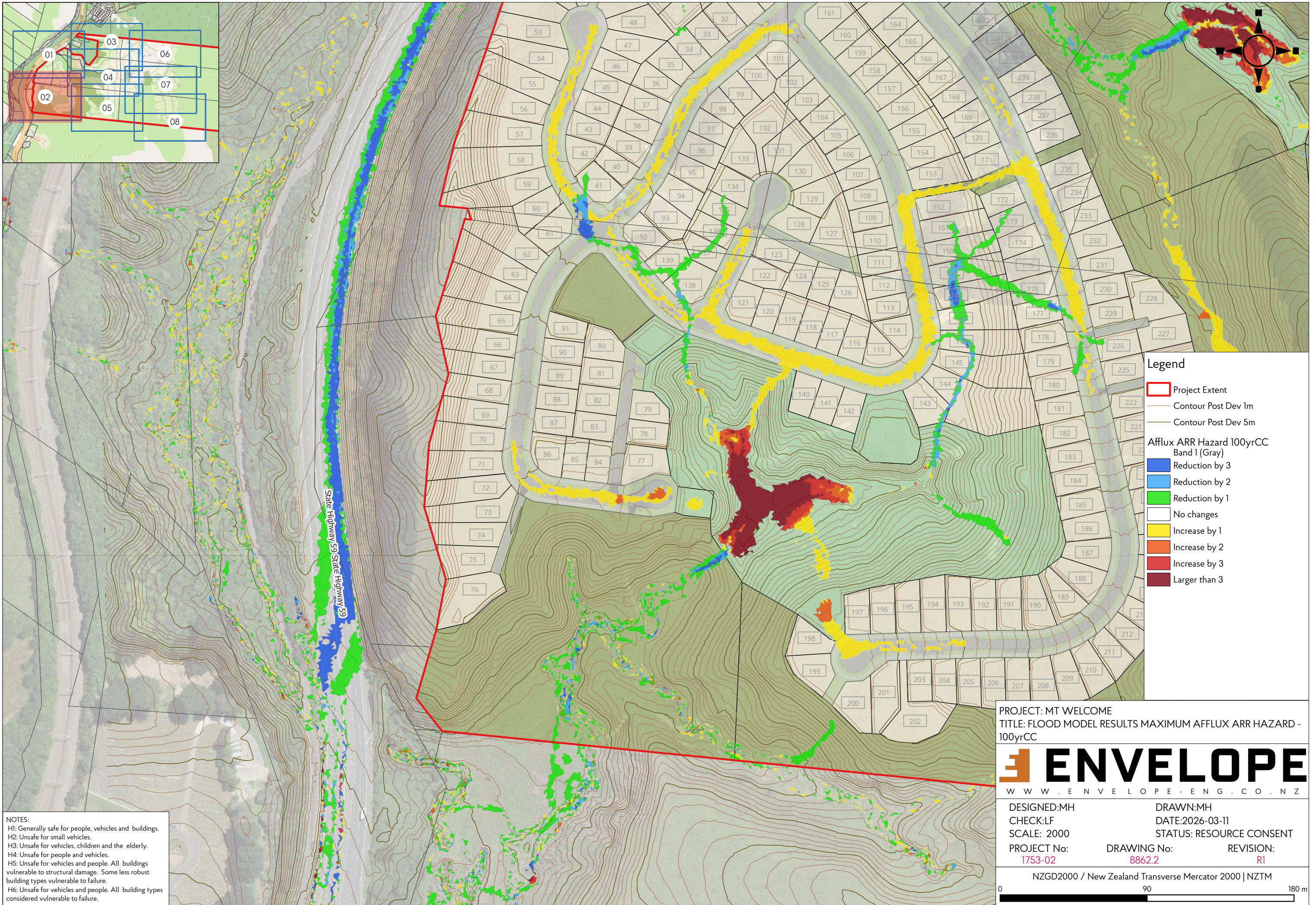
NOTES:
 H1: Generally safe for people, vehicles and buildings.
 H2: Unsafe for small vehicles.
 H3: Unsafe for vehicles, children and the elderly.
 H4: Unsafe for people and vehicles.
 H5: Unsafe for vehicles and people. All buildings vulnerable to structural damage. Some less robust building types vulnerable to failure.
 H6: Unsafe for vehicles and people. All building types considered vulnerable to failure.

PROJECT: MT WELCOME
 TITLE: FLOOD MODEL RESULTS MAXIMUM AFFLUX ARR HAZARD - 100yrCC

ENVELOPE
 WWW.ENVELOPE-ENG.CO.NZ

DESIGNED:MH	DRAWN:MH	
CHECK:LF	DATE:2026-03-11	
SCALE: 2000	STATUS: RESOURCE CONSENT	
PROJECT No: 1753-02	DRAWING No: 8862.1	REVISION: R1

NZGD2000 / New Zealand Transverse Mercator 2000 | NZTM



NOTES:
 H1: Generally safe for people, vehicles and buildings.
 H2: Unsafe for small vehicles.
 H3: Unsafe for vehicles, children and the elderly.
 H4: Unsafe for people and vehicles.
 H5: Unsafe for vehicles and people. All buildings vulnerable to structural damage. Some less robust building types vulnerable to failure.
 H6: Unsafe for vehicles and people. All building types considered vulnerable to failure.

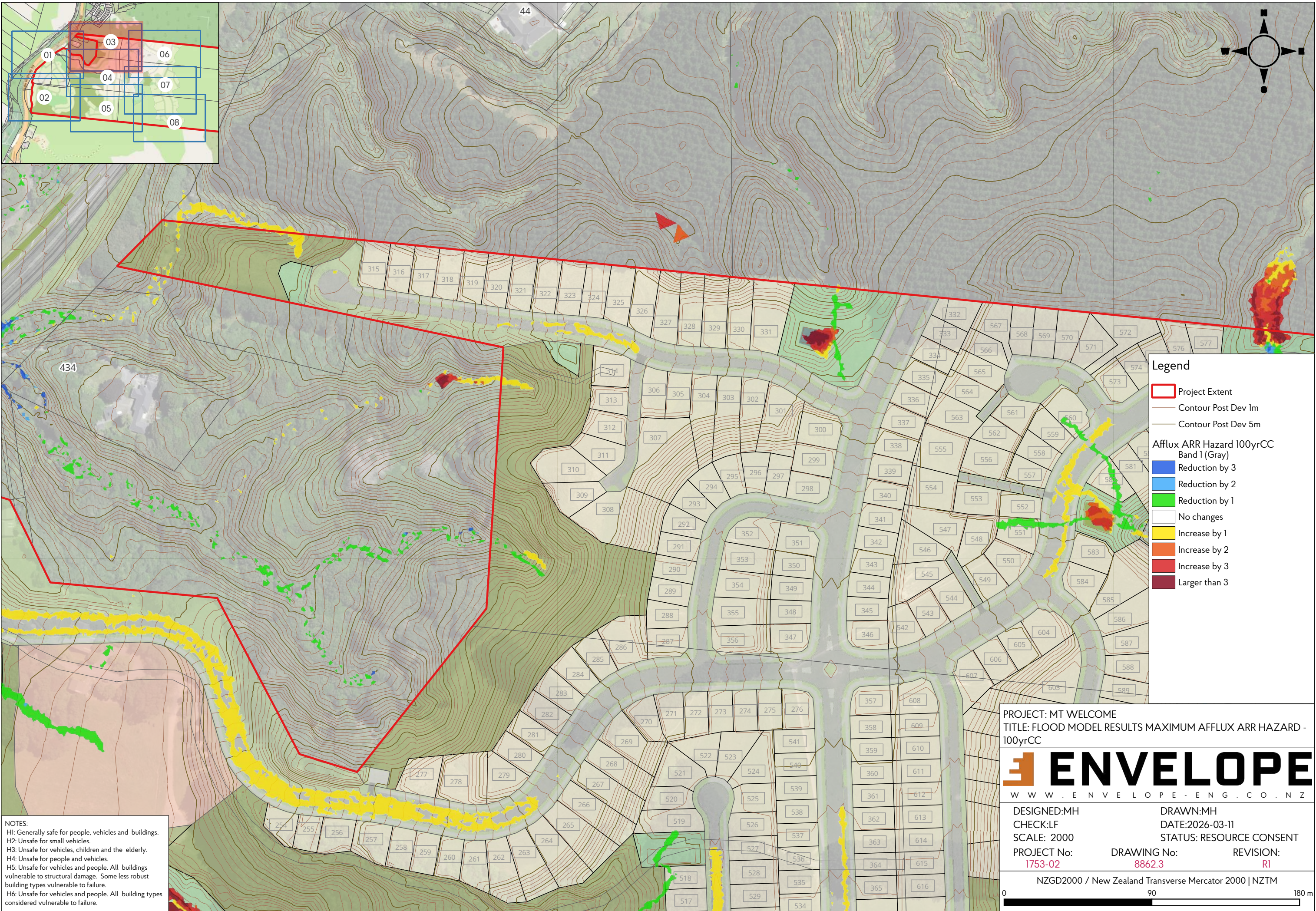
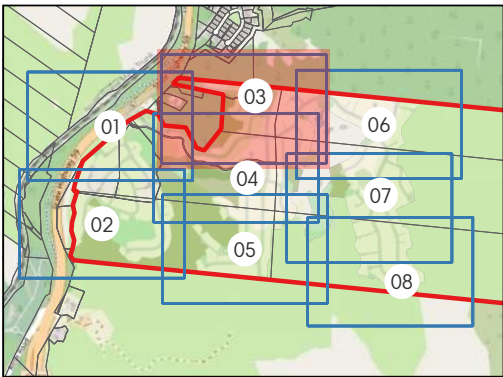
- Legend**
- Project Extent
 - Contour Post Dev 1m
 - Contour Post Dev 5m
 - Afflux ARR Hazard 100yrCC Band 1 (Gray)**
 - Reduction by 3
 - Reduction by 2
 - Reduction by 1
 - No changes
 - Increase by 1
 - Increase by 2
 - Increase by 3
 - Larger than 3

PROJECT: MT WELCOME
 TITLE: FLOOD MODEL RESULTS MAXIMUM AFFLUX ARR HAZARD - 100yrCC



DESIGNED:MH	DRAWN:MH	
CHECK:LF	DATE:2026-03-11	
SCALE: 2000	STATUS: RESOURCE CONSENT	
PROJECT No: 1753-02	DRAWING No: 8862.2	REVISION: R1

NZGD2000 / New Zealand Transverse Mercator 2000 | NZTM



Legend

- Project Extent
- Contour Post Dev 1m
- Contour Post Dev 5m

Afflux ARR Hazard 100yrCC Band 1 (Gray)

- Reduction by 3
- Reduction by 2
- Reduction by 1
- No changes
- Increase by 1
- Increase by 2
- Increase by 3
- Larger than 3

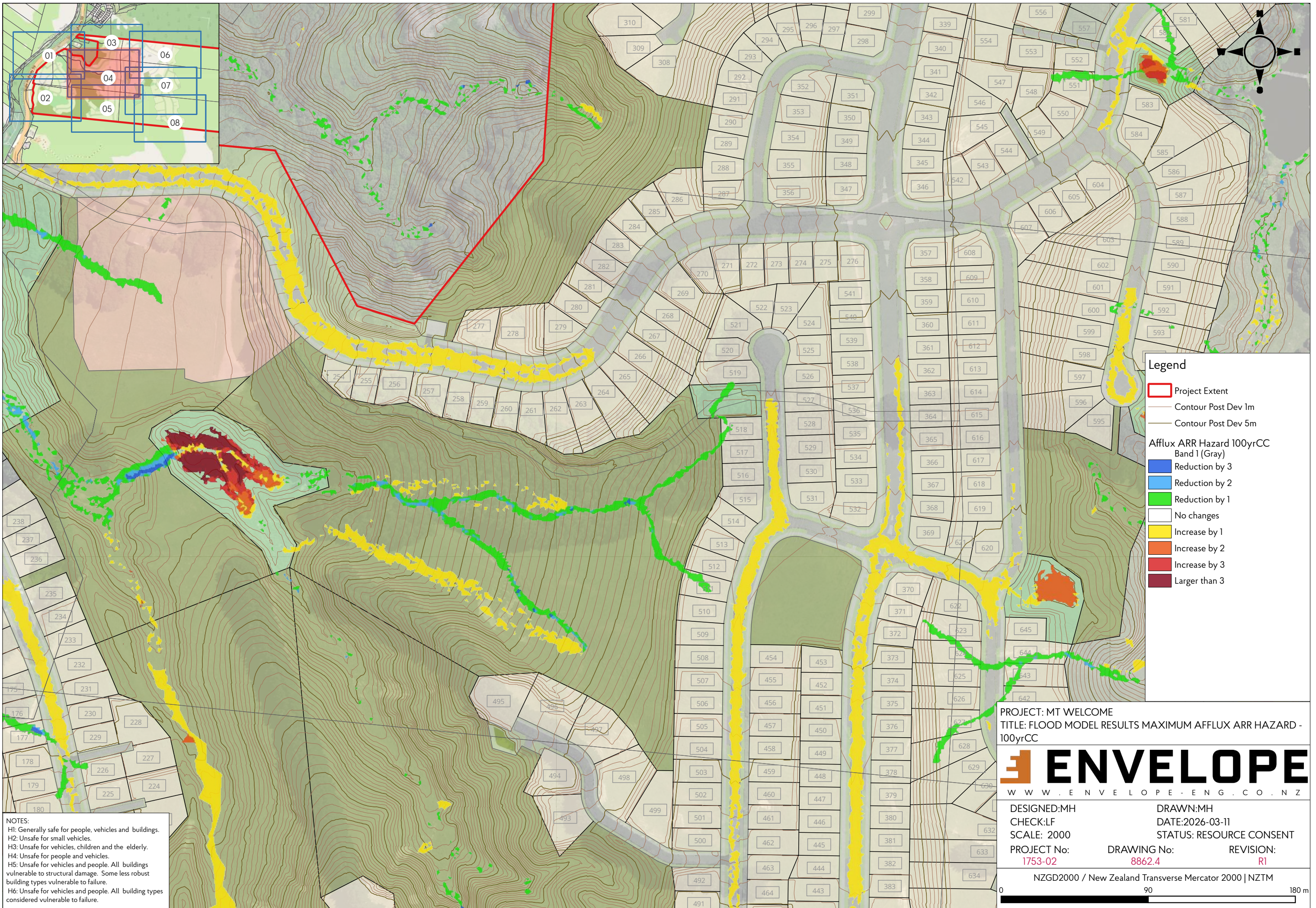
NOTES:
 H1: Generally safe for people, vehicles and buildings.
 H2: Unsafe for small vehicles.
 H3: Unsafe for vehicles, children and the elderly.
 H4: Unsafe for people and vehicles.
 H5: Unsafe for vehicles and people. All buildings vulnerable to structural damage. Some less robust building types vulnerable to failure.
 H6: Unsafe for vehicles and people. All building types considered vulnerable to failure.

PROJECT: MT WELCOME
 TITLE: FLOOD MODEL RESULTS MAXIMUM AFFLUX ARR HAZARD - 100yrCC

ENVELOPE
 WWW.ENVELOPE-ENG.CO.NZ

DESIGNED:MH	DRAWN:MH	
CHECK:LF	DATE:2026-03-11	
SCALE: 2000	STATUS: RESOURCE CONSENT	
PROJECT No: 1753-02	DRAWING No: 8862.3	REVISION: R1

NZGD2000 / New Zealand Transverse Mercator 2000 | NZTM



- Legend**
- Project Extent
 - Contour Post Dev 1m
 - Contour Post Dev 5m
- Afflux ARR Hazard 100yrCC Band 1 (Gray)**
- Reduction by 3
 - Reduction by 2
 - Reduction by 1
 - No changes
 - Increase by 1
 - Increase by 2
 - Increase by 3
 - Larger than 3

NOTES:
 H1: Generally safe for people, vehicles and buildings.
 H2: Unsafe for small vehicles.
 H3: Unsafe for vehicles, children and the elderly.
 H4: Unsafe for people and vehicles.
 H5: Unsafe for vehicles and people. All buildings vulnerable to structural damage. Some less robust building types vulnerable to failure.
 H6: Unsafe for vehicles and people. All building types considered vulnerable to failure.

PROJECT: MT WELCOME
 TITLE: FLOOD MODEL RESULTS MAXIMUM AFFLUX ARR HAZARD - 100yrCC

ENVELOPE
 WWW.ENVELOPE-ENG.CO.NZ

DESIGNED:MH	DRAWN:MH	
CHECK:LF	DATE:2026-03-11	
SCALE: 2000	STATUS: RESOURCE CONSENT	
PROJECT No: 1753-02	DRAWING No: 8862.4	REVISION: R1

NZGD2000 / New Zealand Transverse Mercator 2000 | NZTM

0 90 180 m



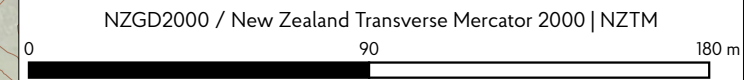
- Legend**
- Project Extent
 - Contour Post Dev 1m
 - Contour Post Dev 5m
- Afflux ARR Hazard 100yrCC**
Band 1 (Gray)
- Reduction by 3
 - Reduction by 2
 - Reduction by 1
 - No changes
 - Increase by 1
 - Increase by 2
 - Increase by 3
 - Larger than 3

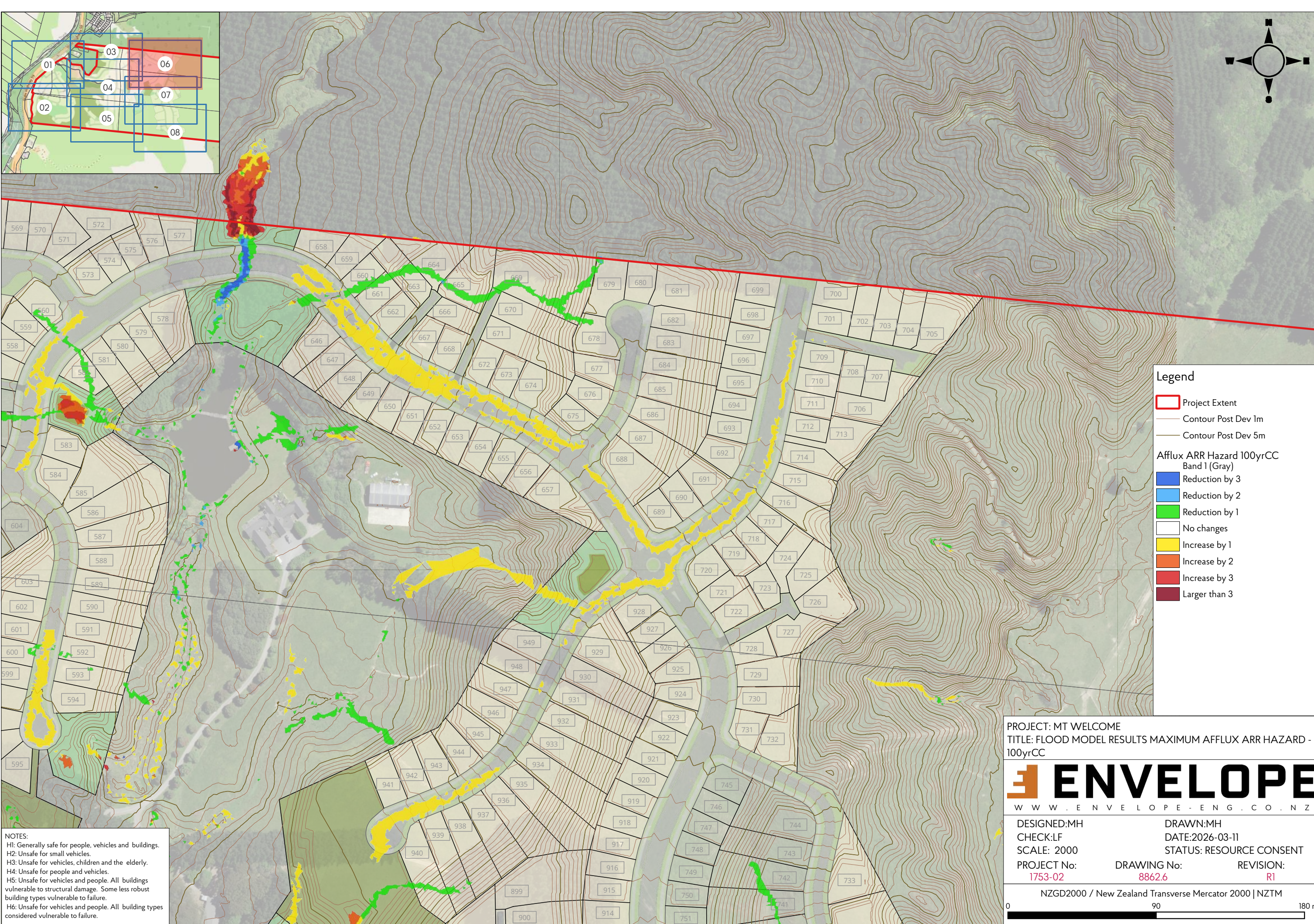
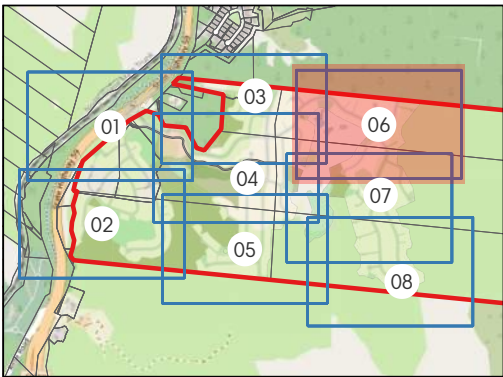
NOTES:
 H1: Generally safe for people, vehicles and buildings.
 H2: Unsafe for small vehicles.
 H3: Unsafe for vehicles, children and the elderly.
 H4: Unsafe for people and vehicles.
 H5: Unsafe for vehicles and people. All buildings vulnerable to structural damage. Some less robust building types vulnerable to failure.
 H6: Unsafe for vehicles and people. All building types considered vulnerable to failure.

PROJECT: MT WELCOME
 TITLE: FLOOD MODEL RESULTS MAXIMUM AFFLUX ARR HAZARD - 100yrCC



DESIGNED:MH	DRAWN:MH	
CHECK:LF	DATE:2026-03-11	
SCALE: 2000	STATUS: RESOURCE CONSENT	
PROJECT No: 1753-02	DRAWING No: 8862.5	REVISION: R1





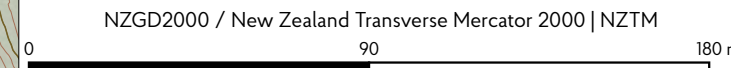
- Legend**
- Project Extent
 - Contour Post Dev 1m
 - Contour Post Dev 5m
- Afflux ARR Hazard 100yrCC
Band 1 (Gray)**
- Reduction by 3
 - Reduction by 2
 - Reduction by 1
 - No changes
 - Increase by 1
 - Increase by 2
 - Increase by 3
 - Larger than 3

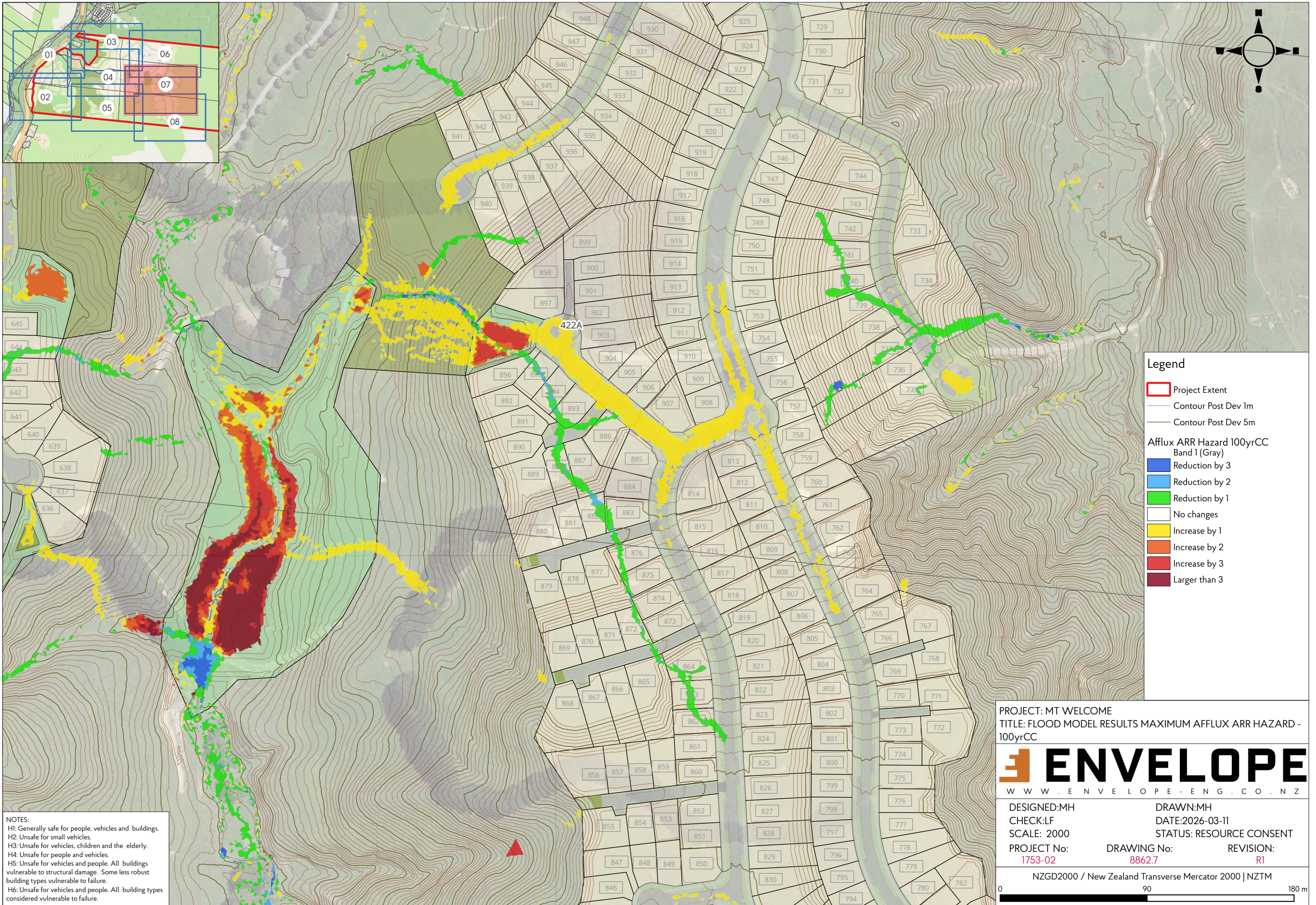
NOTES:
 H1: Generally safe for people, vehicles and buildings.
 H2: Unsafe for small vehicles.
 H3: Unsafe for vehicles, children and the elderly.
 H4: Unsafe for people and vehicles.
 H5: Unsafe for vehicles and people. All buildings vulnerable to structural damage. Some less robust building types vulnerable to failure.
 H6: Unsafe for vehicles and people. All building types considered vulnerable to failure.

PROJECT: MT WELCOME
 TITLE: FLOOD MODEL RESULTS MAXIMUM AFFLUX ARR HAZARD - 100yrCC



DESIGNED:MH	DRAWN:MH	
CHECK:LF	DATE:2026-03-11	
SCALE: 2000	STATUS: RESOURCE CONSENT	
PROJECT No: 1753-02	DRAWING No: 8862.6	REVISION: R1





NOTES:
 H1: Generally safe for people, vehicles and buildings.
 H2: Unsafe for small vehicles.
 H3: Unsafe for vehicles, children and the elderly.
 H4: Unsafe for people and vehicles.
 H5: Unsafe for vehicles and people. All buildings vulnerable to structural damage. Some less robust building types vulnerable to failure.
 H6: Unsafe for vehicles and people. All building types considered vulnerable to failure.

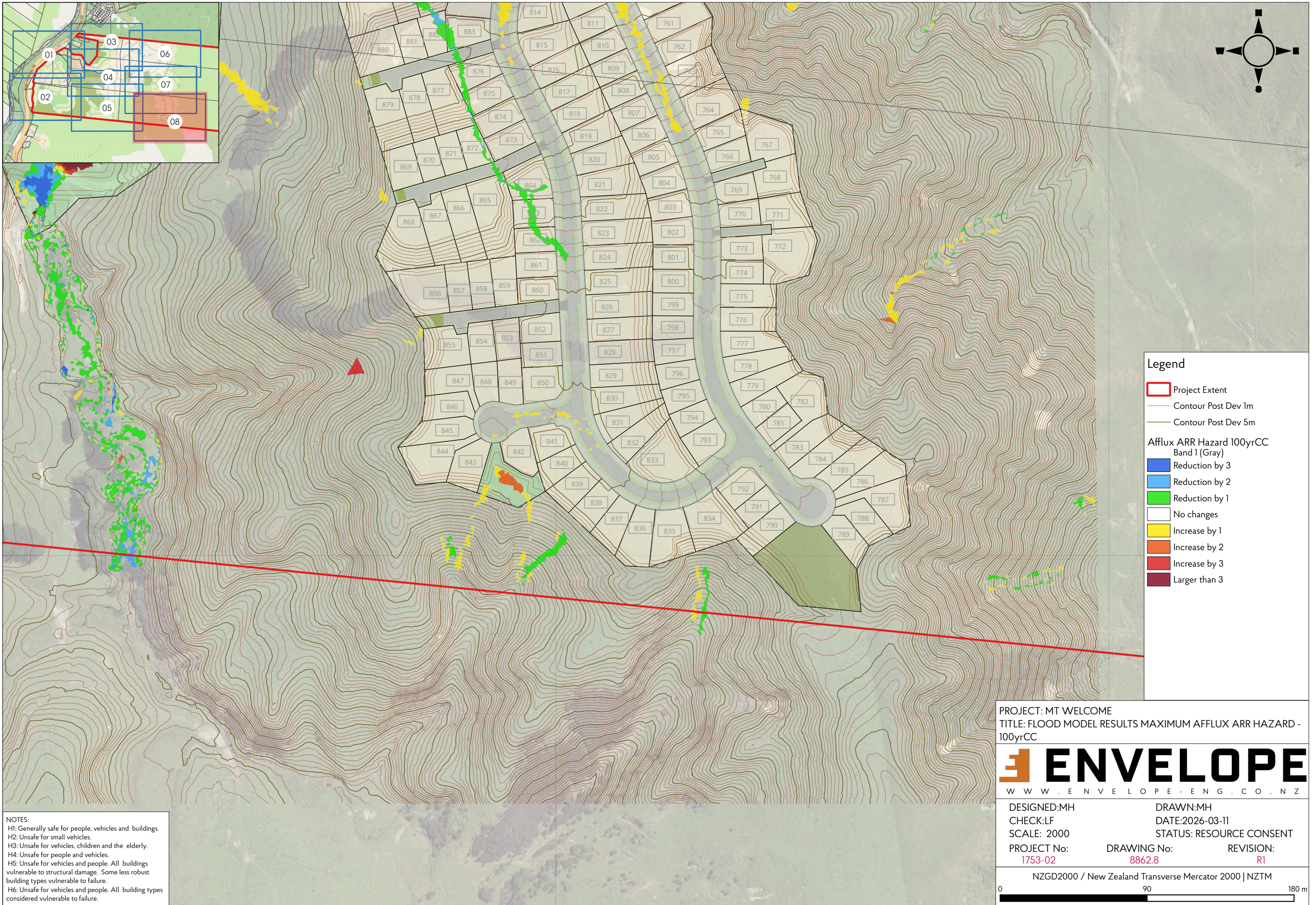
- Legend**
- Project Extent
 - Contour Post Dev 1m
 - Contour Post Dev 5m
- Afflux ARR Hazard 100yrCC**
 Band 1 (Gray)
- Reduction by 3
 - Reduction by 2
 - Reduction by 1
 - No changes
 - Increase by 1
 - Increase by 2
 - Increase by 3
 - Larger than 3

PROJECT: MT WELCOME
 TITLE: FLOOD MODEL RESULTS MAXIMUM AFFLUX ARR HAZARD - 100yrCC



DESIGNED:MH	DRAWN:MH	
CHECK:LF	DATE:2026-03-11	
SCALE: 2000	STATUS: RESOURCE CONSENT	
PROJECT No: 1753-02	DRAWING No: 8862.7	REVISION: R1

NZGD2000 / New Zealand Transverse Mercator 2000 | NZTM



- Legend**
- Project Extent
 - Contour Post Dev 1m
 - Contour Post Dev 5m
- Afflux ARR Hazard 100yrCC**
Band 1 (Gray)
- Reduction by 3
 - Reduction by 2
 - Reduction by 1
 - No changes
 - Increase by 1
 - Increase by 2
 - Increase by 3
 - Larger than 3

PROJECT: MT WELCOME
 TITLE: FLOOD MODEL RESULTS MAXIMUM AFFLUX ARR HAZARD - 100yrCC



DESIGNED:MH	DRAWN:MH	
CHECK:LF	DATE:2026-03-11	
SCALE: 2000	STATUS: RESOURCE CONSENT	
PROJECT No: 1753-02	DRAWING No: 8862.8	REVISION: R1

NZGD2000 / New Zealand Transverse Mercator 2000 | NZTM

NOTES:
 H1: Generally safe for people, vehicles and buildings.
 H2: Unsafe for small vehicles.
 H3: Unsafe for vehicles, children and the elderly.
 H4: Unsafe for people and vehicles.
 H5: Unsafe for vehicles and people. All buildings vulnerable to structural damage. Some less robust building types vulnerable to failure.
 H6: Unsafe for vehicles and people. All building types considered vulnerable to failure.