

- LEGEND**
- Proposed Reserve Trail
  - Proposed Footpath /Cycle link
  - Existing Trail Network
  - Node (Gathering Area)
  - Native Shrubland Planting
  - Native Shrubland Planting & Natural Regeneration
  - Mountain Beech Planting
  - Red/Mountain Beech Planting & Natural Regeneration
  - Low / Riparian Planting
  - Grass
  - Pond/Wetland

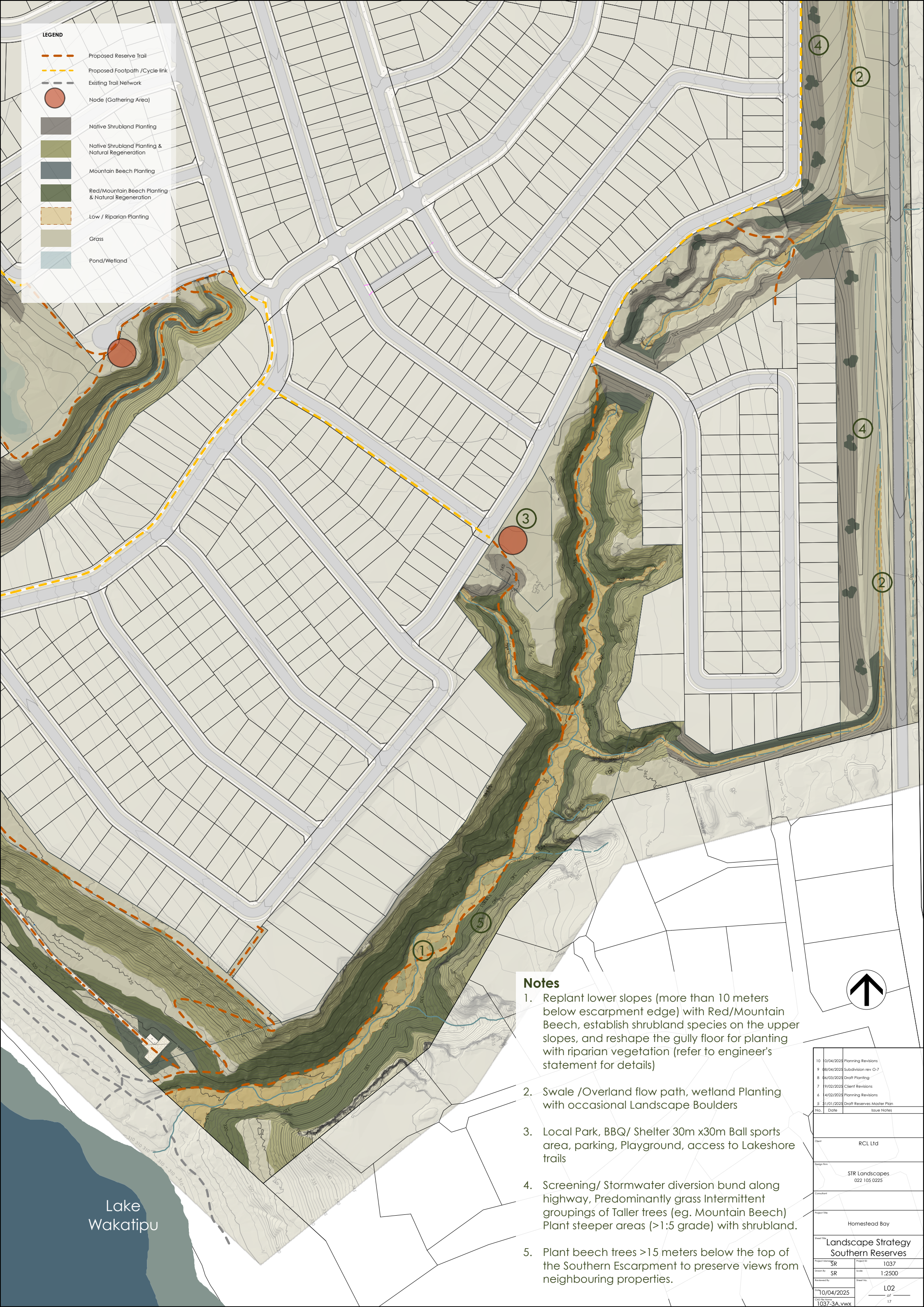
**Notes**

1. Childrens Natural Play area, Viewpoint with Interpretation /Sculptural Elements. Link to foreshore trail.
2. Level 30x30m Ball-sports space /Link to foreshore trail
3. Toilets, BBQ /Shelter
4. Remove existing Pine and Eucalypt trees. Replant lower slopes (more than 10 meters below escarpment edge) with Red/Mountain Beech, establish shrubland species on the upper slopes, and reshape the gully floor for planting with riparian vegetation (refer to engineer's statement for details)
5. Parking
6. Enhanced pond/wetland with possible boardwalk
7. Viewpoint/ Seating/ Interpretation/ Trail link
8. Shelter / BBQ /Playground
9. Community Park -Possible Level 30m x 30m ball-sports space, fitness stations along trail, Sheltered Community Orchard / Garden

Lake Wakatipu

10	10/04/2025	Planning Revisions
9	08/04/2025	Subdivision rev O-7
8	04/03/2025	Draft Planting
7	19/02/2025	Client Revisions
6	14/02/2025	Planning Revisions
5	31/01/2025	Draft Reserves Master Plan
No.	Date	Issue Notes
Client	RCL Ltd	
Design Firm	STR Landscapes 022 105 0225	
Consultant		
Project Title	Homestead Bay	
Sheet Title	Landscape Strategy Community Park	
Project No.	SR	1037
Drawn By	SR	Scale 1:2500
Reviewed By		
Drawn 10/04/2025	L01	
1037-3A.vwx	17	





LEGEND

- Proposed Reserve Trail
- Proposed Footpath /Cycle link
- Existing Trail Network
- Node (Gathering Area)
- Native Shrubland Planting
- Native Shrubland Planting & Natural Regeneration
- Mountain Beech Planting
- Red/Mountain Beech Planting & Natural Regeneration
- Low / Riparian Planting
- Grass
- Pond/Wetland

Notes

- Replant lower slopes (more than 10 meters below escarpment edge) with Red/Mountain Beech, establish shrubland species on the upper slopes, and reshape the gully floor for planting with riparian vegetation (refer to engineer's statement for details)
- Swale /Overland flow path, wetland Planting with occasional Landscape Boulders
- Local Park, BBQ/ Shelter 30m x30m Ball sports area, parking, Playground, access to Lakeshore trails
- Screening/ Stormwater diversion bund along highway, Predominantly grass Intermittent groupings of Taller trees (eg. Mountain Beech) Plant steeper areas (>1:5 grade) with shrubland.
- Plant beech trees >15 meters below the top of the Southern Escarpment to preserve views from neighbouring properties.

Lake Wakatipu

10	0/04/2025	Planning Revisions	
9	08/04/2025	Subdivision rev O-7	
8	04/03/2025	Draft Planting	
7	19/02/2025	Client Revisions	
6	14/02/2025	Planning Revisions	
5	31/01/2025	Draft Reserves Master Plan	
No.	Date	Issue Notes	
Client		RCL Ltd	
Design Firm		STR Landscapes 022 105 0225	
Consultant			
Project Title		Homestead Bay	
Sheet Title			
Landscape Strategy Southern Reserves			
Project Number		Project ID	
SR		1037	
Drawn By		Scale	
SR		1:2500	
Reviewed By		Sheet No.	
10/04/2025		L02	
1037-3A.vwx		— of 17	





LEGEND

- Proposed Reserve Trail
- Proposed Footpath / Cycle link
- Existing Trail Network
- Node (Gathering Area)
- Native Shrubland Planting
- Native Shrubland Planting & Natural Regeneration
- Mountain Beech Planting
- Red/Mountain Beech Planting & Natural Regeneration
- Low / Riparian Planting
- Grass
- Pond/Wetland

- Notes**
- Swale / Overland flow path, wetland Planting with occasional Landscape Boulders
  - Screening / Stormwater diversion bund along highway, Predominantly grass Intermittent groupings of Taller trees (eg. Mountain Beech) Plant steeper areas (>1:5 grade) with shrubland.
  - Local Park/Village Green, possible feature playground.
  - SW Retention Basin / Event Space (Grass)
  - Local Park, possible Playground, BBQ, Shelter.

10	03/04/2025	Planning Revisions
9	08/04/2025	Subdivision rev O-7
8	04/03/2025	Draft Planting
7	19/02/2025	Client Revisions
6	14/02/2025	Planning Revisions
5	31/01/2025	Draft Reserves Master Plan
No.	Date	Issue Notes
Client		
RCL Ltd		
Design Firm		
STR Landscapes 022 105 0225		
Consultant		
Project Title		
Homestead Bay		
Sheet Title		
Landscape Strategy Highway Reserves		
Project No.	SR	Project ID 1037
Drawn By	SR	Scale 1:2500
Reviewed By		Sheet No.
10/04/2025		L03
1037-3A.vwx		17





LEGEND

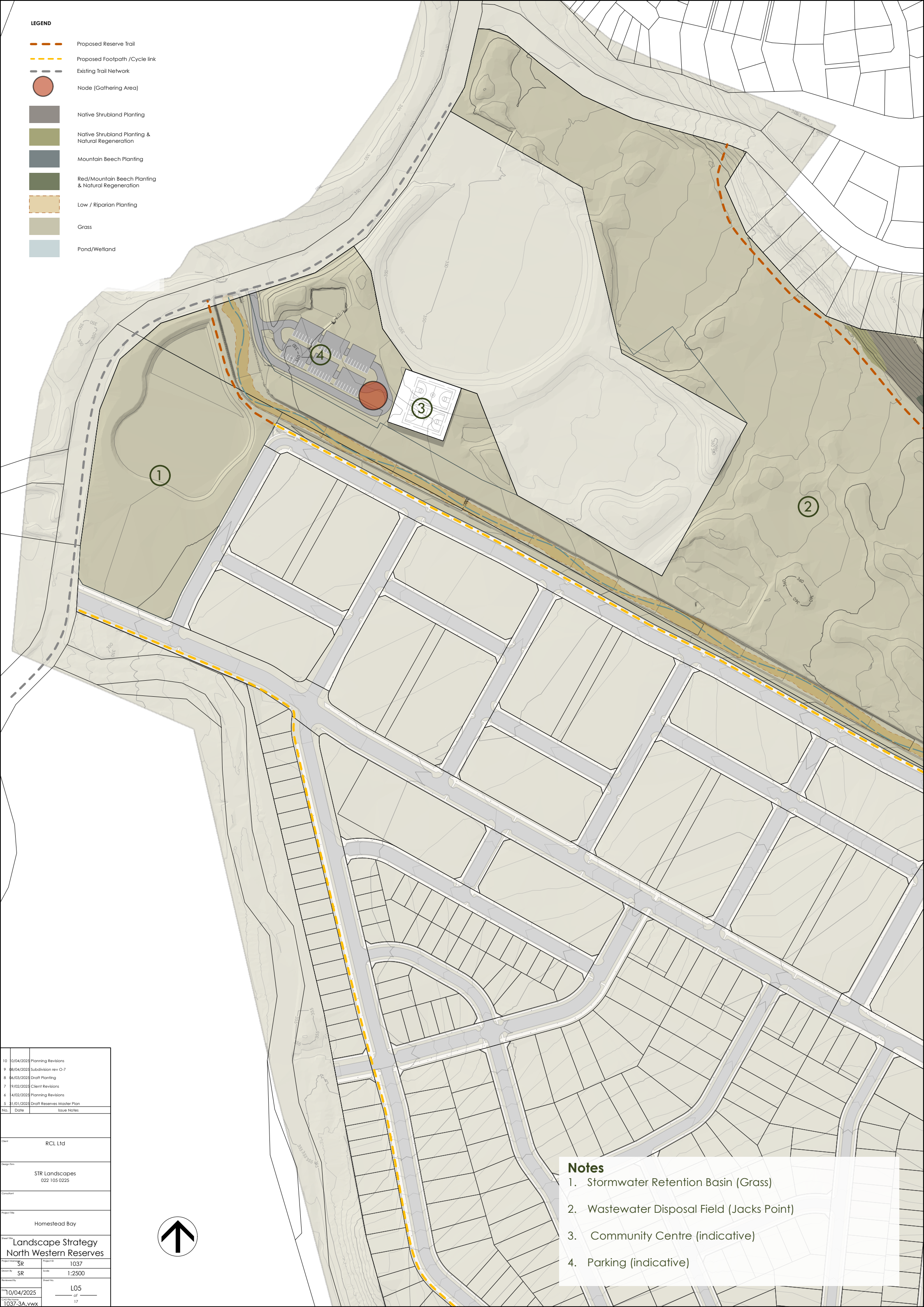
- Proposed Reserve Trail
- Proposed Footpath / Cycle link
- Existing Trail Network
- Node (Gathering Area)
- Native Shrubland Planting
- Native Shrubland Planting & Natural Regeneration
- Mountain Beech Planting
- Red/Mountain Beech Planting & Natural Regeneration
- Low / Riparian Planting
- Grass
- Pond/Wetland

Notes

1. Screened Water Reservoir
2. Screened Utility Area
3. SW Retention Basin / Event Space (Grass)
4. Local Park/Village Green, possible feature playground.
5. Wastewater Disposal Field (Jacks Point)

10	10/04/2025	Planning Revisions
9	08/04/2025	Subdivision rev O-7
8	06/03/2025	Draft Planting
7	09/02/2025	Client Revisions
6	04/02/2025	Planning Revisions
5	31/01/2025	Draft Reserves Master Plan
No.	Date	Issue Notes
Client		
RCL Ltd		
Design Firm		
STR Landscapes 022 105 0225		
Consultant		
Project Site		
Homestead Bay		
Sheet Title		
Landscape Strategy North Eastern Reserves		
Project Admin	SR	Project ID 1037
Drawn By	SR	Scale 1:2500
Reviewed By		Sheet No. L04
10/04/2025		
1037-3A.vwx		



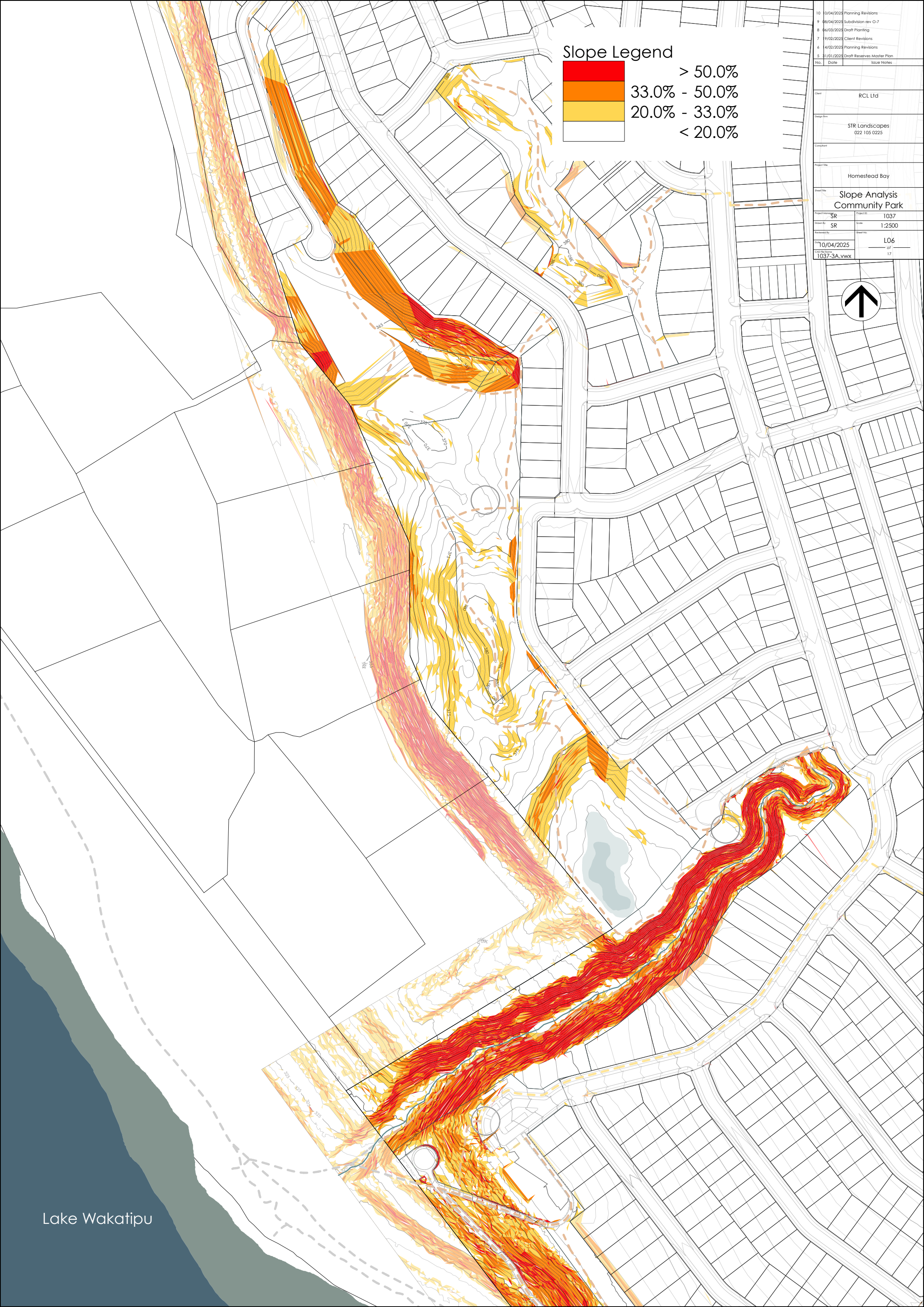


- LEGEND**
- Proposed Reserve Trail
  - Proposed Footpath / Cycle link
  - Existing Trail Network
  - Node (Gathering Area)
  - Native Shrubland Planting
  - Native Shrubland Planting & Natural Regeneration
  - Mountain Beech Planting
  - Red/Mountain Beech Planting & Natural Regeneration
  - Low / Riparian Planting
  - Grass
  - Pond/Wetland

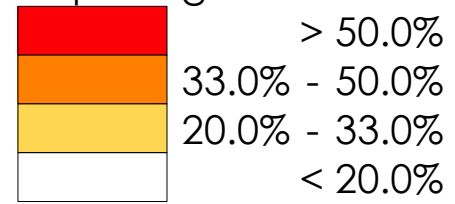
10	01/04/2025	Planning Revisions
9	08/04/2025	Subdivision rev O-7
8	06/03/2025	Draft Planting
7	09/02/2025	Client Revisions
6	14/02/2025	Planning Revisions
5	31/01/2025	Draft Reserves Master Plan
No.	Date	Issue Notes
Client		
RCL Ltd		
Design firm		
STR Landscapes 022 105 0225		
Consultant		
Project title		
Homestead Bay		
Sheet title		
Landscape Strategy North Western Reserves		
Project No.	SR	1037
Drawn by	SR	Scale: 1:2500
Reviewed by		Sheet No.: L05
10/04/2025		
1037-3A.vwx		
17		

- Notes**
- 1. Stormwater Retention Basin (Grass)
  - 2. Wastewater Disposal Field (Jacks Point)
  - 3. Community Centre (indicative)
  - 4. Parking (indicative)





### Slope Legend

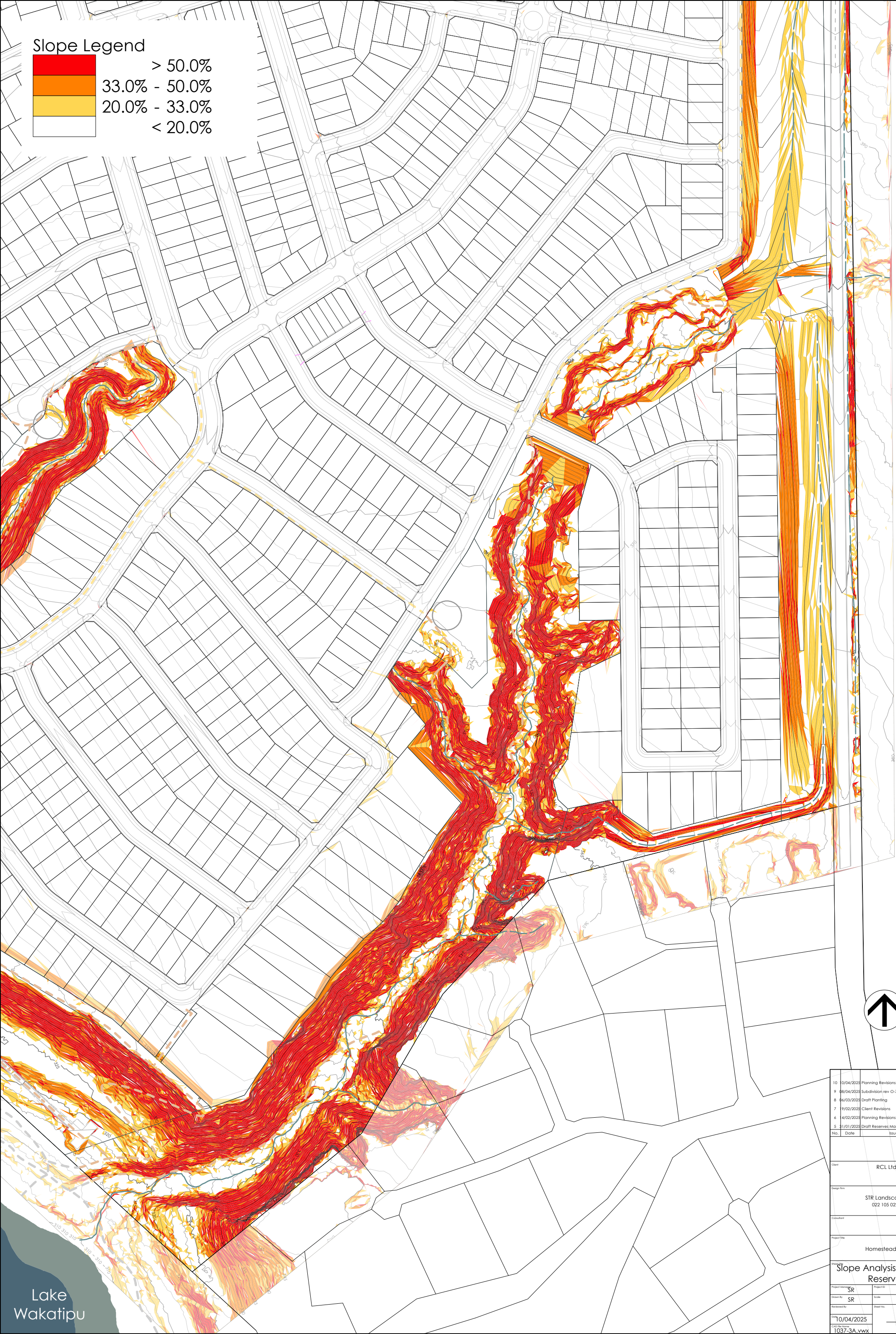
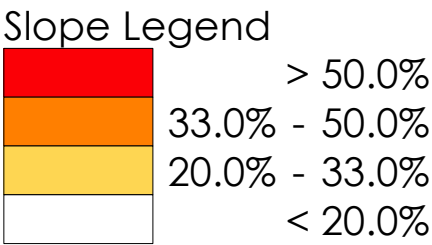


10	10/04/2025	Planning Revisions
9	08/04/2025	Subdivision rev O-7
8	04/03/2025	Draft Planting
7	19/02/2025	Client Revisions
6	14/02/2025	Planning Revisions
5	31/01/2025	Draft Reserves Master Plan
No.	Date	Issue Notes
Client	RCL Ltd	
Design Firm	STR Landscapes 022 105 0225	
Consultant		
Project Title	Homestead Bay	
Drawn Date	Slope Analysis Community Park	
Project Name	SR	1037
Drawn By	SR	1:2500
Reviewed By		LO6
Drawn 10/04/2025		17
CDL File Name	1037-3A.vwx	



Lake Wakatipu





10	10/04/2025	Planning Revisions
9	08/04/2025	Subdivision rev O-7
8	04/03/2025	Draft Planting
7	19/02/2025	Client Revisions
6	14/02/2025	Planning Revisions
5	31/01/2025	Draft Reserves Master Plan
No.	Date	Issue Notes
Client		
RCL Ltd		
Design Firm		
STR Landscapes 022 105 0225		
Consultant		
Project Title		
Homestead Bay		
Project Name		
Slope Analysis Southern Reserves		
Project No.	SR	Project ID 1037
Drawn By	SR	Scale 1:2500
Reviewed By		Sheet No. L07
Date 10/04/2025		
Drawing No. 1037-3A.vwx		
17		

Lake Wakatipu



Slope Legend

> 50.0%

33.0% - 50.0%

20.0% - 33.0%

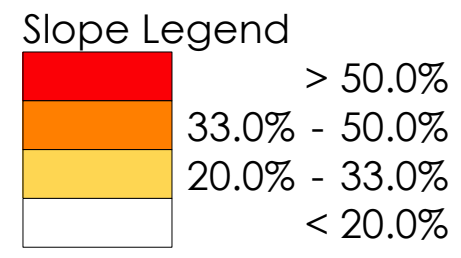
< 20.0%

10	03/04/2025	Planning Revisions
9	08/04/2025	Subdivision rev O-7
8	04/03/2025	Draft Planting
7	19/02/2025	Client Revisions
6	14/02/2025	Planning Revisions
5	31/01/2025	Draft Reserves Master Plan
No.	Date	Issue Notes
Client		
RCL Ltd		
Design Firm		
STR Landscapes 022 105 0225		
Consultant		
Project Title		
Homestead Bay		
Drawn		
Slope Analysis Highway Reserves		
Project No.	SR	Project ID 1037
Drawn By	SR	Scale 1:2500
Reviewed By		Sheet No.
03/10/2025		L08
1037-3A.vwx		17

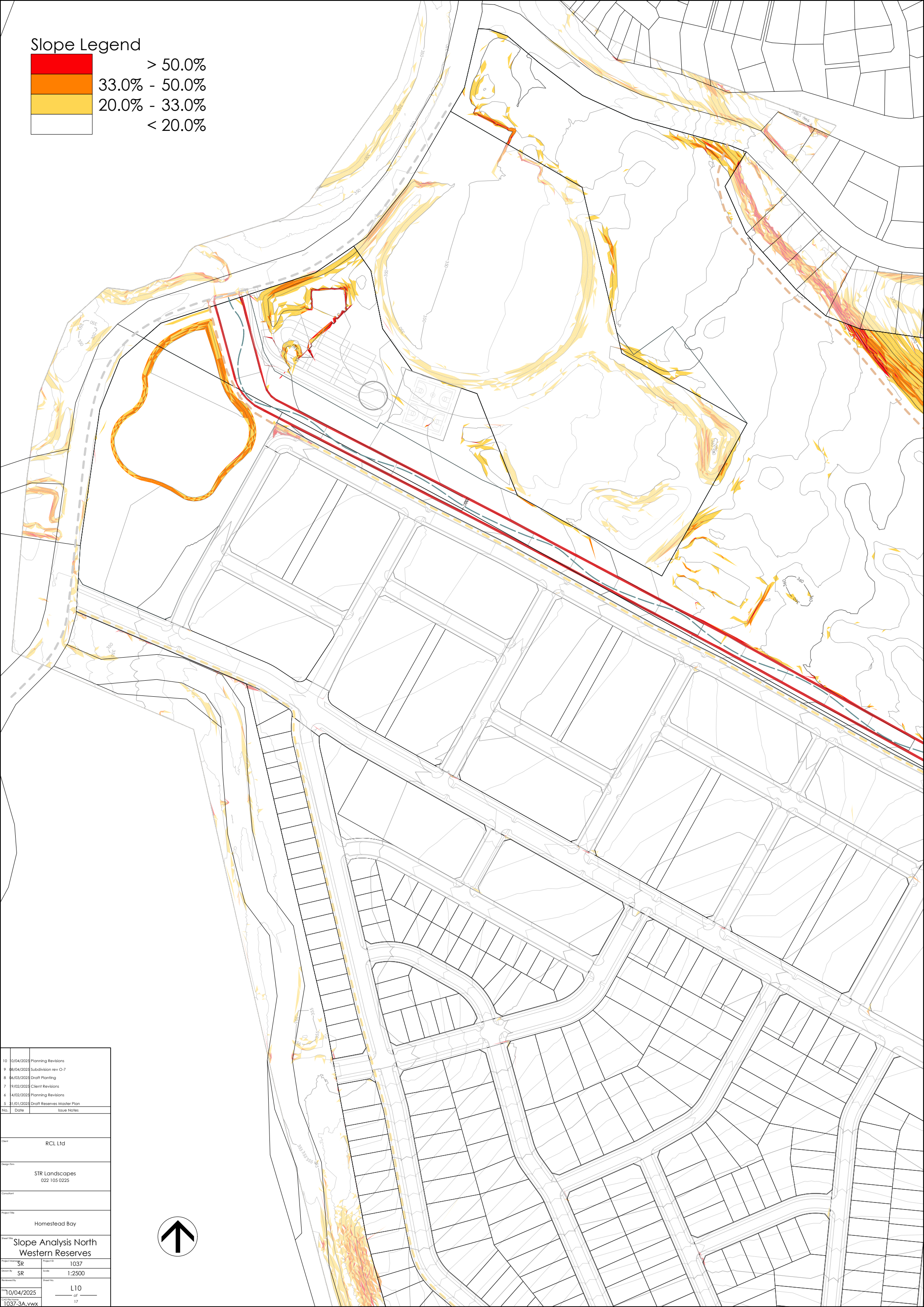
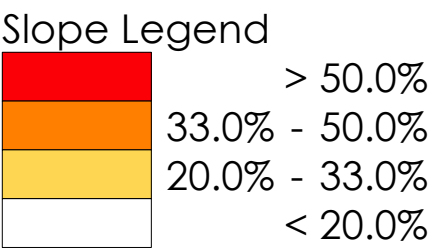




10	10/04/2025	Planning Revisions
9	08/04/2025	Subdivision rev O-7
8	06/03/2025	Draft Planting
7	09/02/2025	Client Revisions
6	04/02/2025	Planning Revisions
5	31/01/2025	Draft Reserves Master Plan
No.	Date	Issue Notes
Client		
RCL Ltd		
Design Firm		
STR Landscapes 022 105 0225		
Consultant		
Project Title		
Homestead Bay		
Sheet Title		
Slope Analysis North Eastern Reserves		
Project Admin	SR	Project ID 1037
Design By	SR	Scale 1:2500
Reviewed By		Sheet No. L09
10/04/2025		
1037-3A.vwx		
17		



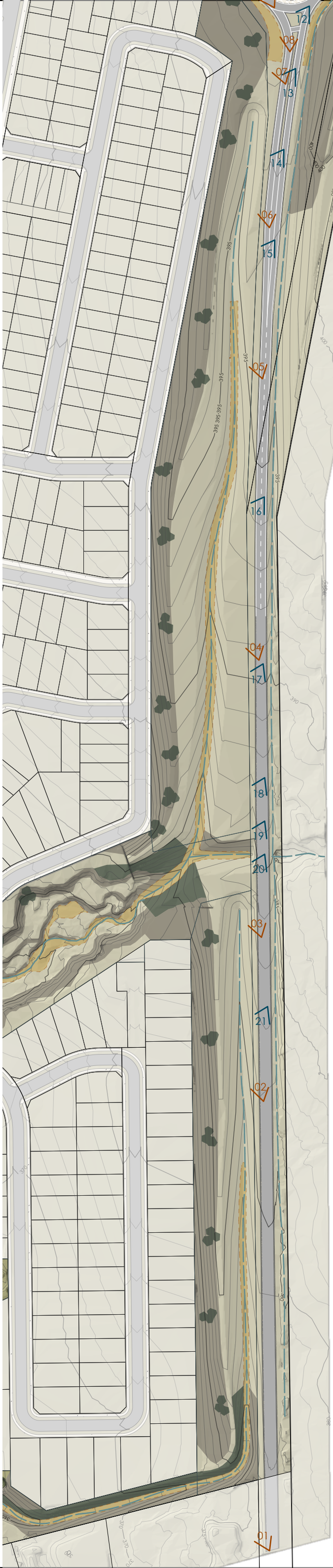





10	01/04/2025	Planning Revisions
9	08/04/2025	Subdivision rev O-7
8	06/03/2025	Draft Planting
7	09/02/2025	Client Revisions
6	14/02/2025	Planning Revisions
5	31/01/2025	Draft Reserves Master Plan
No.	Date	Issue Notes
Client		
RCL Ltd		
Design Firm		
STR Landscapes 022 105 0225		
Consultant		
Project Title		
Homestead Bay		
Sheet Title		
Slope Analysis North Western Reserves		
Project No.	SR	1037
Drawn By	SR	Scale: 1:2500
Reviewed By		Sheet No.: L10
10/04/2025		
1037-3A.vwx		








**LEGEND**

 SH6 North-bound Viewpoints  
(by sheet number)

 SH6 South-bound Viewpoints  
(by sheet number)

10	01/04/2025	Planning Revisions
9	08/04/2025	Subdivision rev O-7
8	04/03/2025	Draft Planting
7	19/02/2025	Client Revisions
6	14/02/2025	Planning Revisions
5	31/01/2025	Draft Reserves Master Plan
No.	Date	Issue Notes
Client		
RCL Ltd		
Design Firm		
STR Landscapes 022 105 0225		
Consultant		
Project Title		
Homestead Bay		
Sheet Title		
Highway Viewpoints		
Project No.	SR	Project ID 1037
Drawn By	SR	Scale 1:2500
Reviewed By		Sheet No. L17
Date 10/04/2025		17
File Name 1037-3A.vwx		