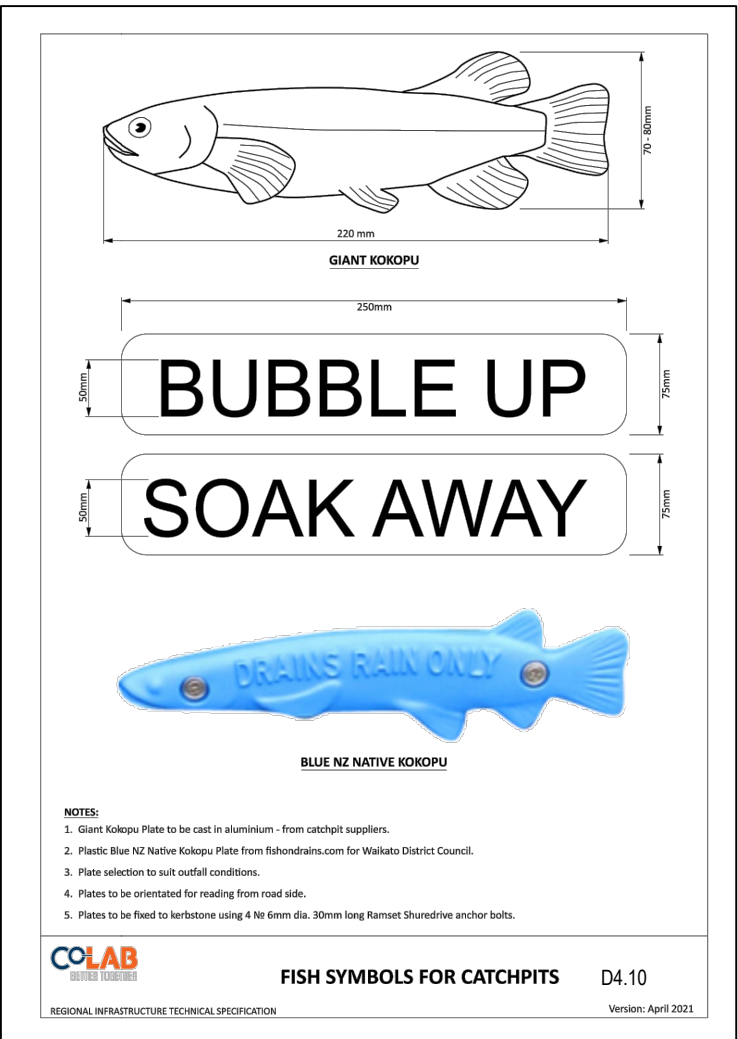
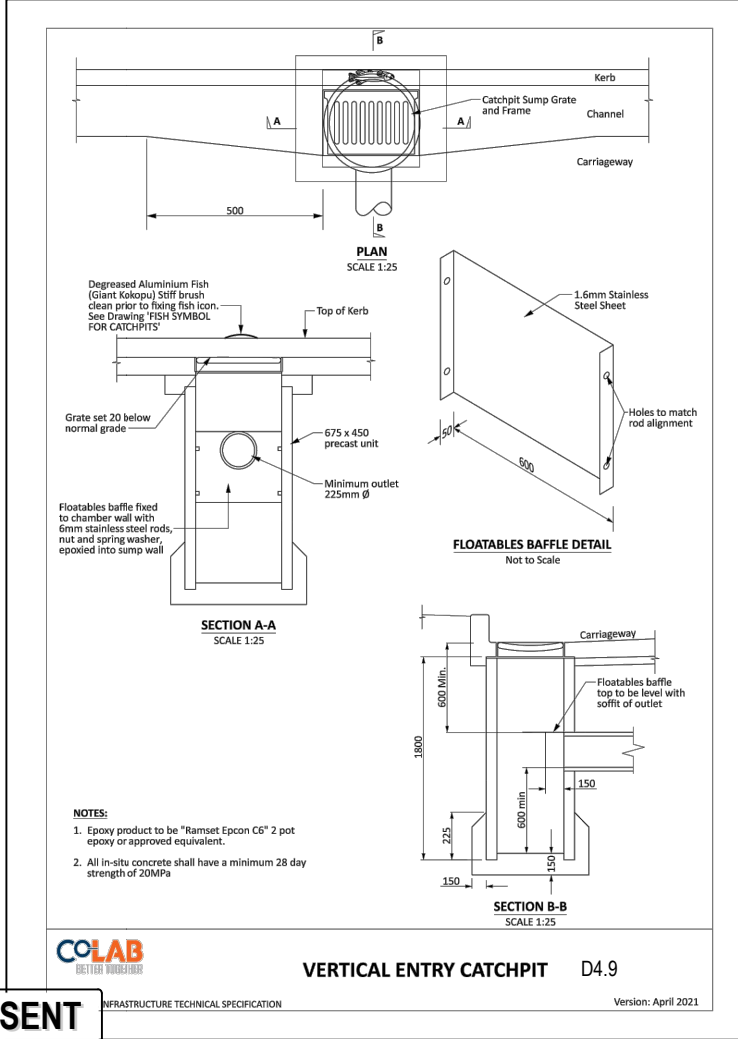
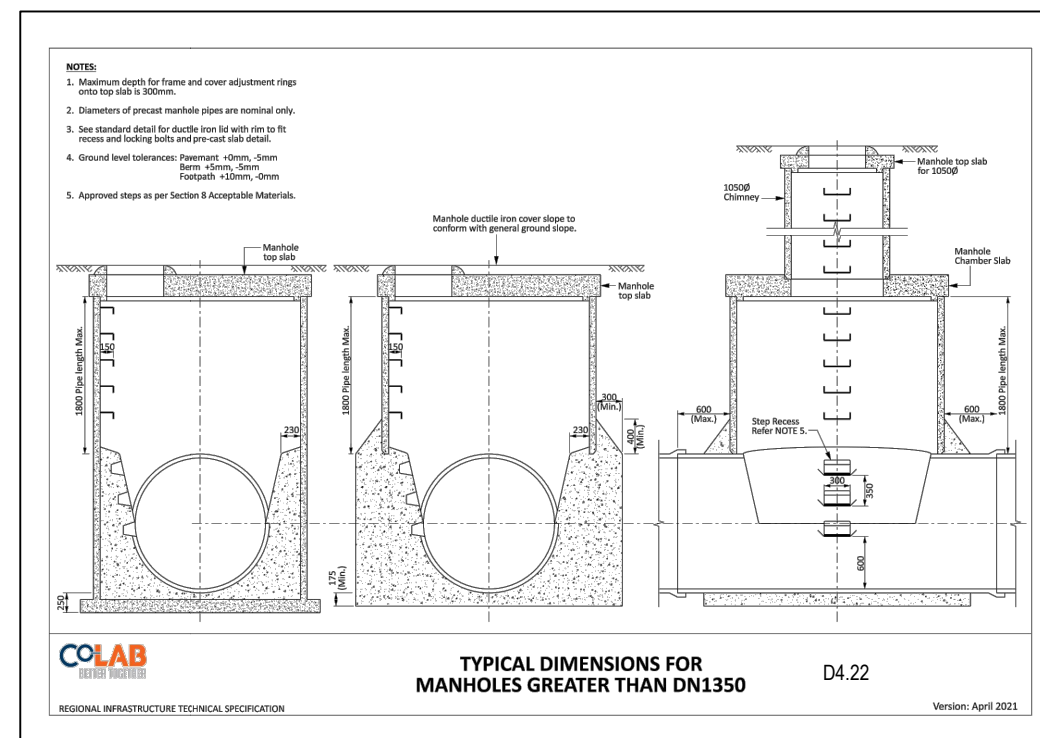
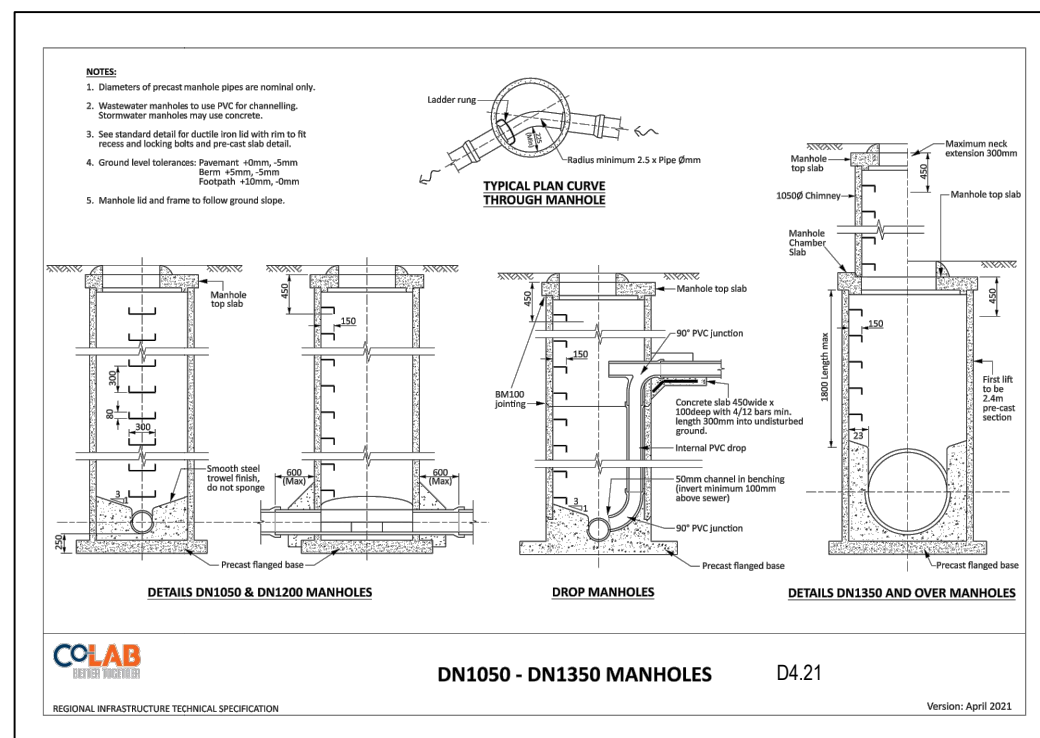
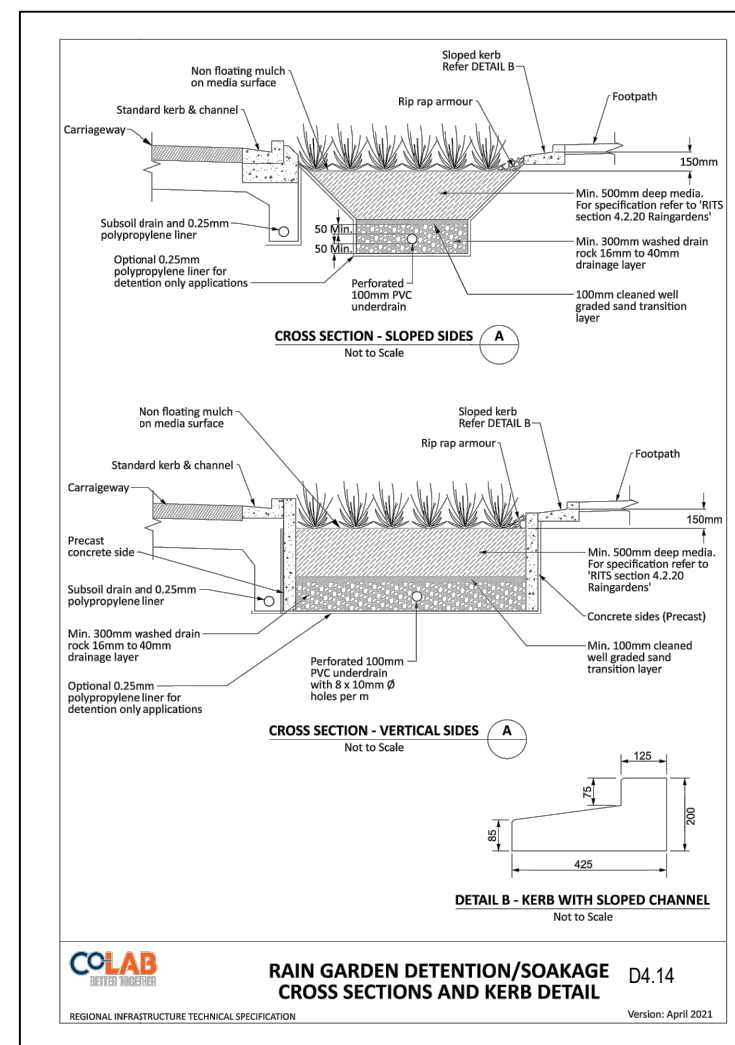
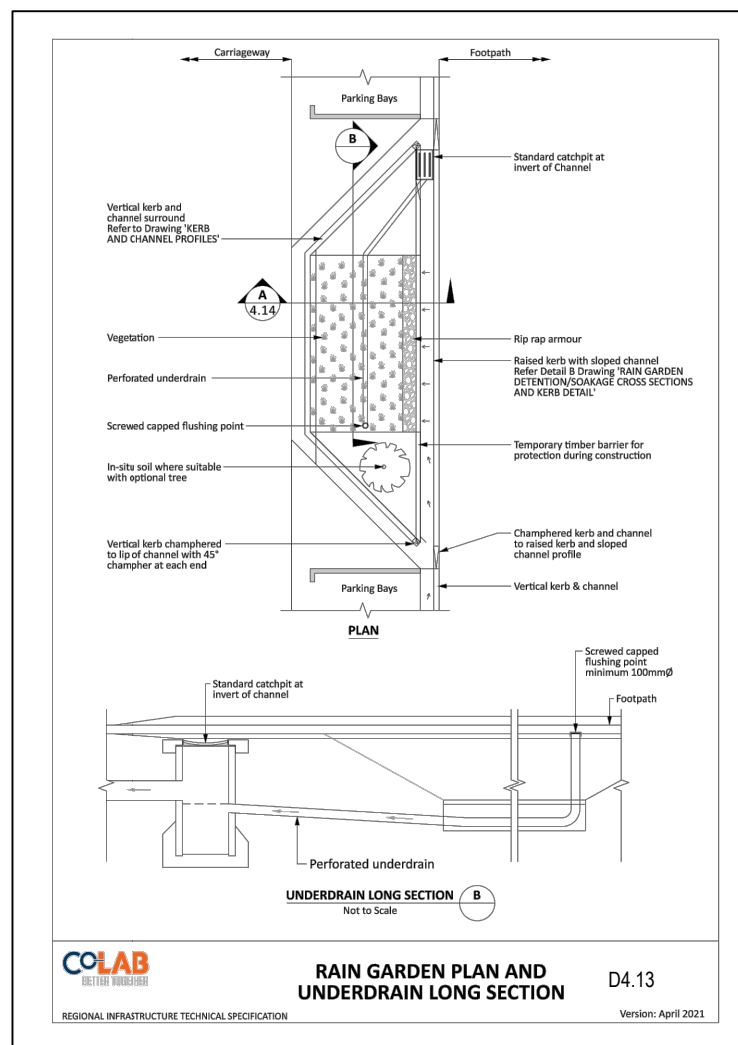


- Notes
1. All works to be in accordance with Waikato Regional Infrastructure Technical Specifications.
 2. Co-ordinates in terms of NZ Geodetic Datum Mount Eden 2000.
 3. Levels in terms of the New Zealand Vertical Datum 2016.
 4. It is the contractors responsibility to locate all services that may be affected by his operations.
 5. Approved hardfill is to be used in backfilling of all stormwater lines within the road reserve.
 6. All catchpit leads shall be laid at 1% unless otherwise specified.
 7. All lines to be abandoned shall be sealed at each end. Timing of all sealing to be coordinated with council staff.



A	FAST TRACK APP	MKS	04/2025
Rev	Description	By	Date
		By	Date
Survey	MAVEN		05/2024
Design	MKS		04/2025
Drawn	MKS		04/2025
Checked	DJM		04/2025
<div><div><div>M</div><div>MAVEN</div></div><div><div>Maven Associates</div><div>09 571 0050</div><div>info@maven.co.nz</div><div>www.maven.co.nz</div><div>5 Owens Road, Epsom</div><div>Auckland 1023</div></div></div>			
Project ASHBOURNE RESIDENTIAL FOR MATAMATA DEVELOPMENTS LTD			
Title PROPOSED STORMWATER STANDARD DETAILS			
Project no.	289001		
Scale	NTS		
Cad file	C480-SW STANDARD DETAILS.DWG		
Drawing no.	C480-1	Rev	A



- | Notes | |
|-------|--|
| 1. | All works to be in accordance with Waikato Regional Infrastructure Technical Specifications. |
| 2. | Co-ordinates in terms of NZ Geodetic Datum Mount Eden 2000. |
| 3. | Levels in terms of the New Zealand Vertical Datum 2016. |
| 4. | It is the contractors responsibility to locate all services that may be affected by his operations. |
| 5. | Approved hardfill is to be used in backfilling of all stormwater lines within the road reserve. |
| 6. | All catchpit leads shall be laid at 1% unless otherwise specified. |
| 7. | All lines to be abandoned shall be sealed at each end. Timing of all sealing to be coordinated with council staff. |

A	FAST TRACK APP	MKS	04/2025
Rev	Description	By	Date
	By	Date	
Survey	MAVEN	05/2024	
Design	MKS	04/2025	
Drawn	MKS	04/2025	
Checked	DJM	04/2025	

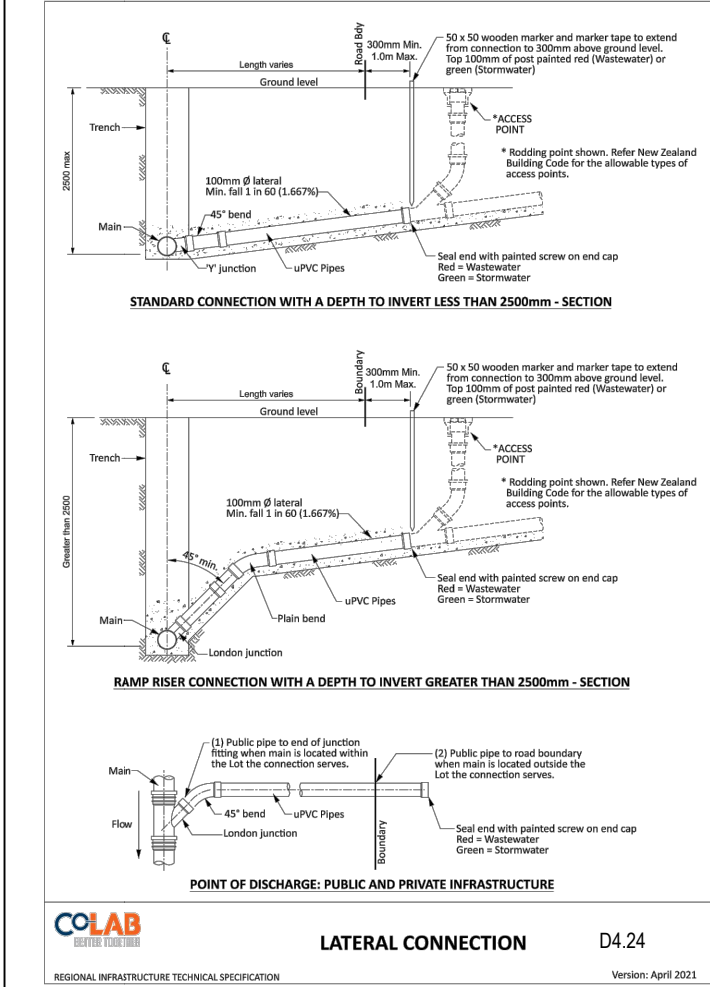
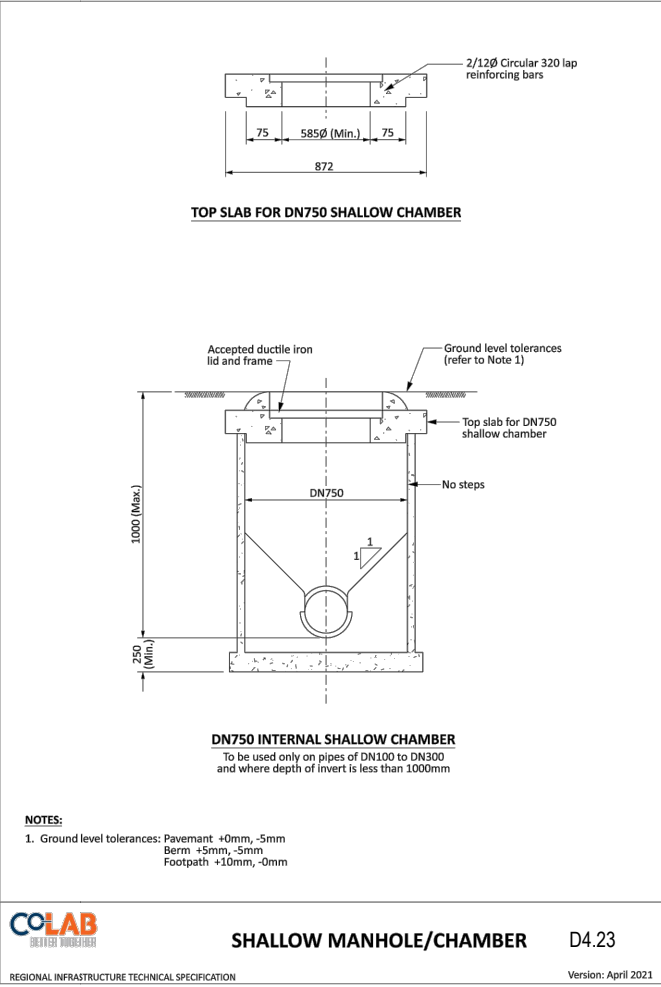


Maven Associates
09 571 0050
info@maven.co.nz
www.maven.co.nz
5 Owens Road, Epsom
Auckland 1023

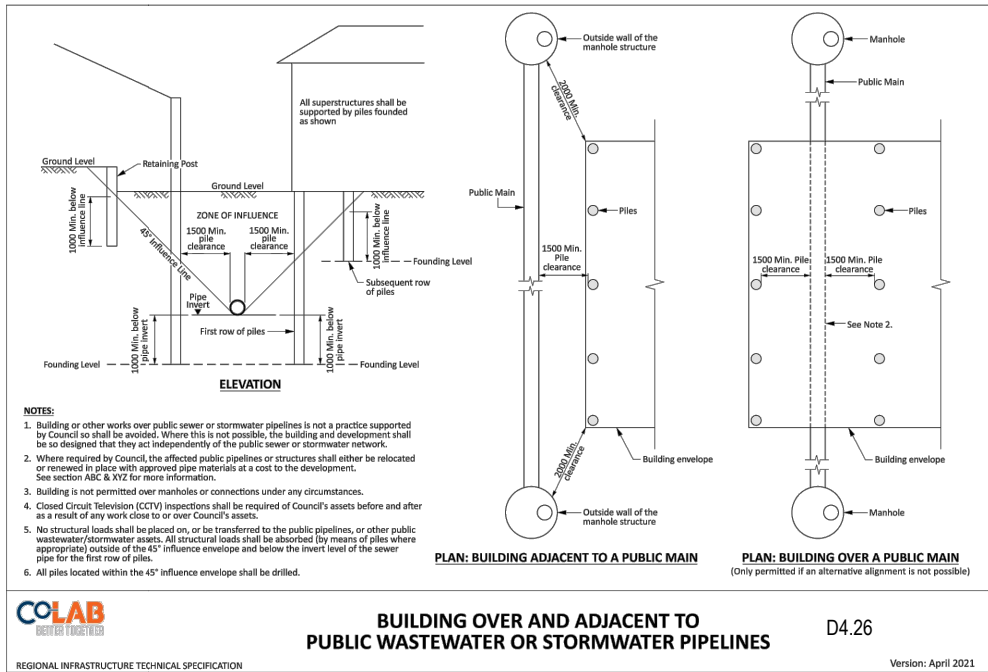
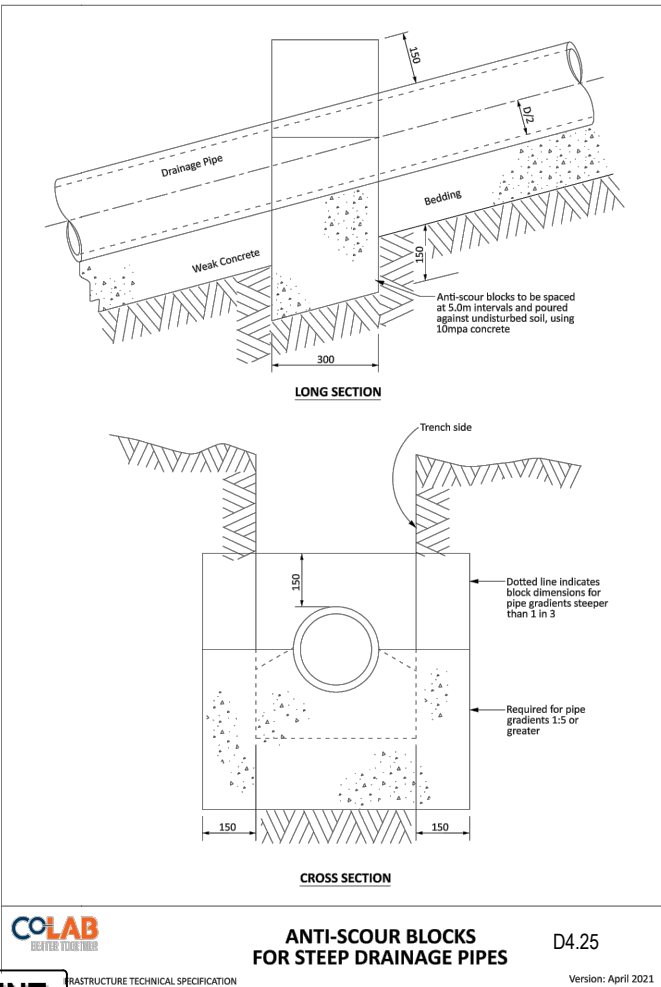
Project
**ASHBOURNE
RESIDENTIAL
FOR
MATAMATA
DEVELOPMENTS LTD**

Title	
	<p>PROPOSED STORMWATER STANDARD DETAILS</p>

Project no.	289001		
Scale	NTS		
Cad file	C480-SW STANDARD DETAILS.DWG		
Drawing no.	C480-2	Rev	A



- Notes
1. All works to be in accordance with Waikato Regional Infrastructure Technical Specifications.
 2. Co-ordinates in terms of NZ Geodetic Datum Mount Eden 2000.
 3. Levels in terms of the New Zealand Vertical Datum 2016.
 4. It is the contractors responsibility to locate all services that may be affected by his operations.
 5. Approved hardfill is to be used in backfilling of all stormwater lines within the road reserve.
 6. All catchpit leads shall be laid at 1% unless otherwise specified.
 7. All lines to be abandoned shall be sealed at each end. Timing of all sealing to be coordinated with council staff.



A	FAST TRACK APP	MKS	04/2025
Rev	Description	By	Date
		By	Date
Survey	MAVEN		05/2024
Design	MKS		04/2025
Drawn	MKS		04/2025
Checked	DJM		04/2025

M Maven Associates
09 571 0050
info@maven.co.nz
www.maven.co.nz
5 Owens Road, Epsom
Auckland 1023

MAVEN

Project
**ASHBOURNE
RESIDENTIAL
FOR
MATAMATA
DEVELOPMENTS LTD**

Title
**PROPOSED
STORMWATER
STANDARD DETAILS**

Project no.	289001
Scale	NTS
Cad file	C480-SW STANDARD DETAILS.DWG
Drawing no.	C480-3
Rev	A