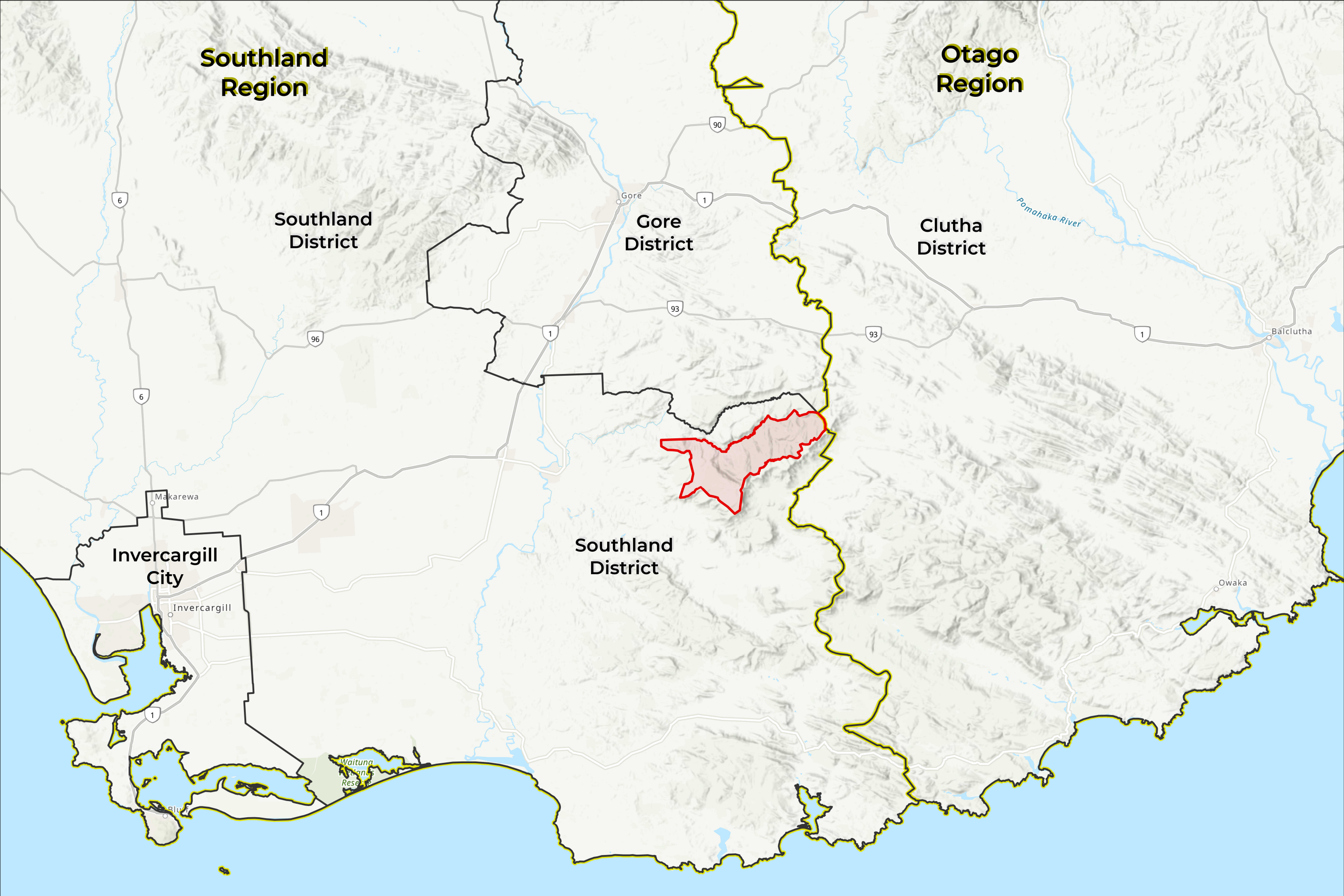




Figure Name	Figure Description	Page No
FIGURE PROJECT DESCRIPTION - 1	Regional Location of the Southland Wind Farm Project	1
FIGURE PROJECT DESCRIPTION - 2	Southland Wind Farm Project Site Plan (Aerial photo base map)	2
FIGURE PROJECT DESCRIPTION - 2A	Southland Wind Farm Project Site Plan	3
FIGURE PROJECT DESCRIPTION - 3	Conceptual layout of the Grid Injection Point (GIP)	4
FIGURE PROJECT DESCRIPTION - 4	Conceptual layout of the Sub Station	5
FIGURE PROJECT DESCRIPTION - 5	Envelope Areas, Civil Works Design and Potential Water Take Locations	6
FIGURE PROJECT DESCRIPTION - 6	Wind Turbines requiring Aviation Warning Lights	7
FIGURE PROJECT DESCRIPTION - 7	Potential surplus fill disposal sites and mapped vegetation eco-values	8
FIGURE RADIO COMPATIBILITY - 1	Fixed radio linking services operating near the Wind Farm Site	9
FIGURE RADIO COMPATIBILITY - 2	Close up of licensed wide area transmitters, 2 X Mr. L C Eunson Transmitters located within the co-ordination zone	10
FIGURE SHADOW FLICKER - 1	Modelled Shadow Flicker, max theoretical hrs. per year	11
FIGURE PART B - 1	Southland District Plan Zoning and Overlays	12
FIGURE PART B - 2	Dwellings within 10km of Proposed Wind Turbines	13
FIGURE PART B - 3	NZLRI Land Use Capability	14
FIGURE PART C - 1	Proposed Mimihau Stream North Branch Crossing Location and DoC Marginal Strip	15
FIGURE PART C - 5	DoC Concession areas Southland Wind Farm access track and transmission line	16
FIGURE PART C - 9	Transmission line routes considered for the Southland Wind Farm	17
FIGURE TERRESTRIAL ECOLOGY - 1	Locations of Vegetation and Wetland Delineation Plots Across the Wind Farm Site	18
FIGURE TERRESTRIAL ECOLOGY - 2a	Locations of Fauna Survey Areas and Stations - Wind Farm Site - West	19
FIGURE TERRESTRIAL ECOLOGY - 2b	Locations of Fauna Survey Areas and Stations - Wind Farm Site - East	20
FIGURE TERRESTRIAL ECOLOGY - 3a	Overview of the Ecological Enhancement and Restoration Areas on the Wind Farm Site	21
FIGURE TERRESTRIAL ECOLOGY - 3b	Ecological Enhancement and Restoration Areas on Jedburgh Station	22
FIGURE TERRESTRIAL ECOLOGY - 3c	Copper Tussock Enhancement and Skink Protection Area on Matariki Forest	23
FIGURE TERRESTRIAL ECOLOGY - 3d	Davidson Road Wetland Restoration Site and Proposed Covenant	24
FIGURE TERRESTRIAL ECOLOGY - 4	Southland Wind Farm Project Site Plan	25
FIGURE TERRESTRIAL ECOLOGY - 5	Threatened Environment Classification	26
FIGURE TERRESTRIAL ECOLOGY - 6	Protected areas in the vicinity of the Wind Farm Project	27
FIGURE TERRESTRIAL ECOLOGY - 7a	Vegetation Ecological Values and Types - Wind Farm Site - West	28
FIGURE TERRESTRIAL ECOLOGY - 7b	Vegetation Ecological Values and Types - Wind Farm Site - Centre North	29
FIGURE TERRESTRIAL ECOLOGY - 7c	Vegetation Ecological Values and Types - Wind Farm Site - Centre South	30
FIGURE TERRESTRIAL ECOLOGY - 7d	Vegetation Ecological Values and Types - Wind Farm Site - East	31
FIGURE TERRESTRIAL ECOLOGY - 8a	Indicative Surplus Fill Disposal Sites - Wind Farm Site - West	32
FIGURE TERRESTRIAL ECOLOGY - 8b	Indicative Surplus Fill Disposal Sites - Wind Farm Site - East	33
FIGURE TERRESTRIAL ECOLOGY - 9a	Offsetting and compensation measures on the wind farm site proposed to address the residual effects of the Project	34
FIGURE TERRESTRIAL ECOLOGY - 9b	Wider offsetting and compensation measures proposed to address the residual effects of the Project	35
FIGURE TERRESTRIAL ECOLOGY - 9c	Davidson Road Wetland Restoration Site and Proposed Covenant	36

Figure Name	Figure Description	Page No
FIGURE LONG-TAILED BATS - 1	Acoustic Bat Monitor (ABM) locations for bat surveys 1, 2 3 & 4	37
FIGURE LONG-TAILED BATS - 2	Acoustic Bat Monitor (ABM) locations for bat surveys 5, 6, 7 & 8	38
FIGURE LONG-TAILED BATS - 3	Total bat passes at ABM locations for bat surveys 1, 2 3 & 4	39
FIGURE LONG-TAILED BATS - 4	ABMs which recorded more than 20 bat passes per survey during surveys 1 – 3	40
FIGURE LONG-TAILED BATS - 5	Total bat passes at ABM locations for bat surveys 5 to 8	41
FIGURE LONG-TAILED BATS - 6	Location and profile between ABM survey sites B59 and B63	42
FIGURE LONG-TAILED BATS - 7	Graduated symbols indicating highest activity levels (bat passes) for surveys 1 to 4	43
FIGURE LONG-TAILED BATS - 8	Heat map showing bat activity as percentage of nights bats are active across the surveys 5 – 8	44
FIGURE LONG-TAILED BATS - 9	Surveys 5 – 8 with the data expressed as the weighted score BAI (indexed), and Delineation of bat risk areas	45
FIGURE LONG-TAILED BATS - 10	Wind turbines within the Bat Risk Area where specific mitigation is required to minimise effects on bats	46
FIGURE LONG-TAILED BATS - 11	Location of bat trapping sites within the Catlins River area and the Wind Farm Site.	47
FIGURE LONG-TAILED BATS - 12	Bat roosts and flight paths	48
FIGURE LONG-TAILED BATS - 13	Example of Wildlands mapped vegetation layer clipped to civil works design and rotor swept areas of wind turbines	49
FIGURE LONG-TAILED BATS - 14	Catlins trap lines withing within the Beresford Range pest control area.	50
FIGURE AQUATIC ECOLOGY - 1	Mimihau, Mokorete and Kaiwera Catchments	51
FIGURE AQUATIC ECOLOGY - 2	Aquatic hydrology sites and catchments, Notable Stream crossings and potential water take locations	52
FIGURE AQUATIC ECOLOGY - 3	NZFFD Fish Records for the Mimihau, Mokoreta and Kaiwera Catchments.	53
FIGURE NOISE EFFECTS - 1	Noise contours - Southland Wind Farm only	54
FIGURE NOISE EFFECTS - 2	Cumulative noise contours - Southland Wind Farm and Kaiwera Downs Wind Farm	55
FIGURE NOISE EFFECTS - 3	Assessed dwellings and construction and operational noise point sources	56
FIGURE NOISE EFFECTS - 4	40 dBA cumulative noise contour and surrounding properties	57
FIGURE TRANSPORT - 1	State highway network in the vicinity of the Wind Farm Site	58
FIGURE TRANSPORT - 2	Transport routes from Bluff to the Wind Farm Site	59
FIGURE TRANSPORT - 3	Transport routes for potential sources of aggregate to the Wind Farm Site	60
FIGURE TRANSPORT - 4	Transport route through Gore	61
FIGURE TRANSPORT - 5	Local roads affected by transport to and from the Wind Farm Project	62
FIGURE ARCHAEOLOGY - 1	Location of recorded archaeological sites near the project site	63
FIGURE ARCHAEOLOGY - 2	Area to be monitored by archaeologist and representative from TAMI	64
FIGURE CONDITIONS - 1	Project Site Design	65
FIGURE PART L - 1	Project and Adjacent Properties	66





<p>LEGEND</p> <ul style="list-style-type: none"><li><span style="border: 2px solid red; display: inline-block; width: 20px; height: 10px;"></span> Wind Farm Site</li><li><span style="border: 2px solid black; display: inline-block; width: 20px; height: 10px;"></span> District Boundaries</li><li><span style="border: 2px solid yellow; display: inline-block; width: 20px; height: 10px;"></span> Region Boundaries</li></ul>	<p>LOGO</p> 	<p>MAP SCALE</p> <p>Scale: 1:325,000</p> <div><div>N</div><div></div><div><div>02.551015</div><div>Kilometers</div></div></div>	<p>PRINT DATE</p> <p>26/06/2025</p> <p>VERSION</p> <p>1.0</p>	<p>TITLE</p> <p><b>FIGURE PROJECT DESCRIPTION - 1</b></p> <p>Regional Location of the Southland Wind Farm Project</p>
--	---	--	---	---

Service Layer Credits: Eagle Technology, LINZ, StatsNZ, NIWA, Natural Earth, © OpenStreetMap contributors., Eagle Technology, LINZ





LEGEND

Wind Farm

- Wind Turbines
- ▲ Permanent Meteorological Mast
- Sub Station
- ◆ Potential Water Take Location
- ▭ Batching Plant Envelope Areas
- ▭ O&M Building Location Envelope Area
- ▭ Substation Envelope Area
- ▭ Civil Works Design
- ▭ Wind Farm Site

Grid Connection

- ◆ Grid Injection Point (GIP)
- Transmission Line Route
- ▭ GIP Envelope Area
- ▭ Transmission Line Corridor (200m Wide)

Property

Wind Farm Properties

- ▭ Glencoe Station
- ▭ Matariki (Venlaw) Forests
- ▭ Jedburgh Station

Transmission Line Properties

- ▭ Salvation Army Trust
- ▭ Port Blakely

Other Properties

- ▭ Contact Energy Property

Other

- Transpower 220kV Transmission Line
- ▭ District Council Boundary
- ▭ Regional Council Boundary
- ▭ DOC Conservation Area (Conservation Park)
- ▭ DOC Conservation Area (Stewardship)

MAP SCALE



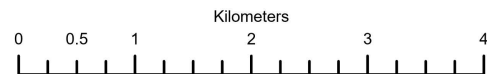
Scale: 1:65,000

PRINT DATE

25/07/2025

VERSION

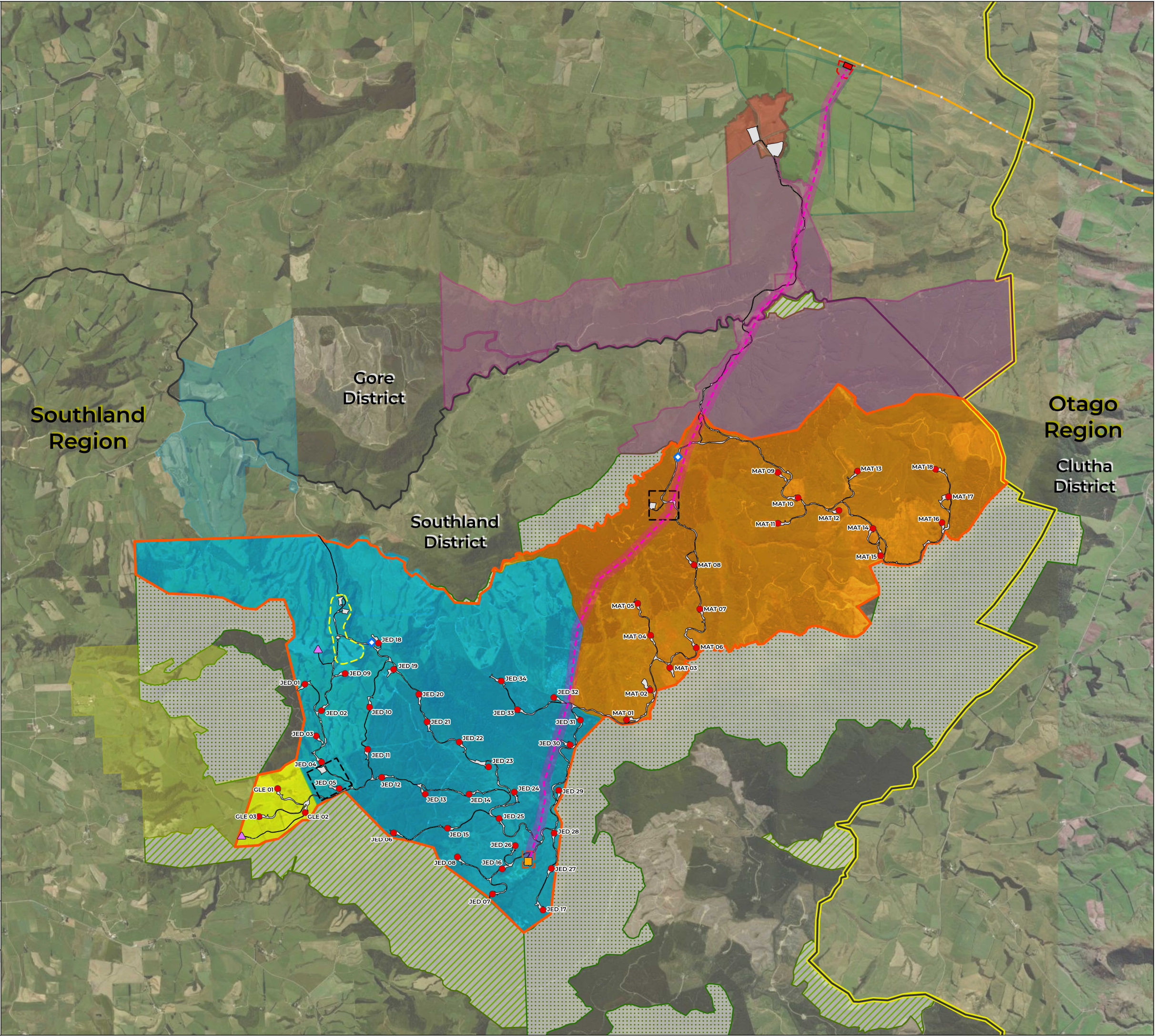
1.0



TITLE

FIGURE PROJECT DESCRIPTION - 2

SOUTHLAND WIND FARM  
PROJECT SITE PLAN







LEGEND

Wind Farm

- Wind Turbines
- ▲ Permanent Meteorological Mast
- Sub Station
- ◇ Potential Water Take Location
- ▭ Batching Plant Envelope Areas
- ▭ O&M Building Location Envelope Area
- ▭ Substation Envelope Area
- Civil Works Design
- ▭ Wind Farm Site

Grid Connection

- ◆ Grid Injection Point (GIP)
- ▭ GIP Envelope Area
- Transmission Line Route
- ▭ Transmission Line Corridor (200m Wide)

Property

Wind Farm Properties

- ▭ Glencoe Station
- ▭ Matariki (Venlaw) Forests
- ▭ Jedburgh Station

Transmission Line Properties

- ▭ Salvation Army Trust
- ▭ Port Blakely

Other Properties

- ▭ Contact Energy Property

Other

- Transpower 220kV Transmission Line
- ▭ DOC Public Conservation Area
- ▭ DOC Stewardship Area
- ▭ District Council Boundary
- ▭ Regional Council Boundary

MAP SCALE



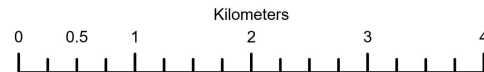
Scale: 1:65,000

PRINT DATE

25/07/2025

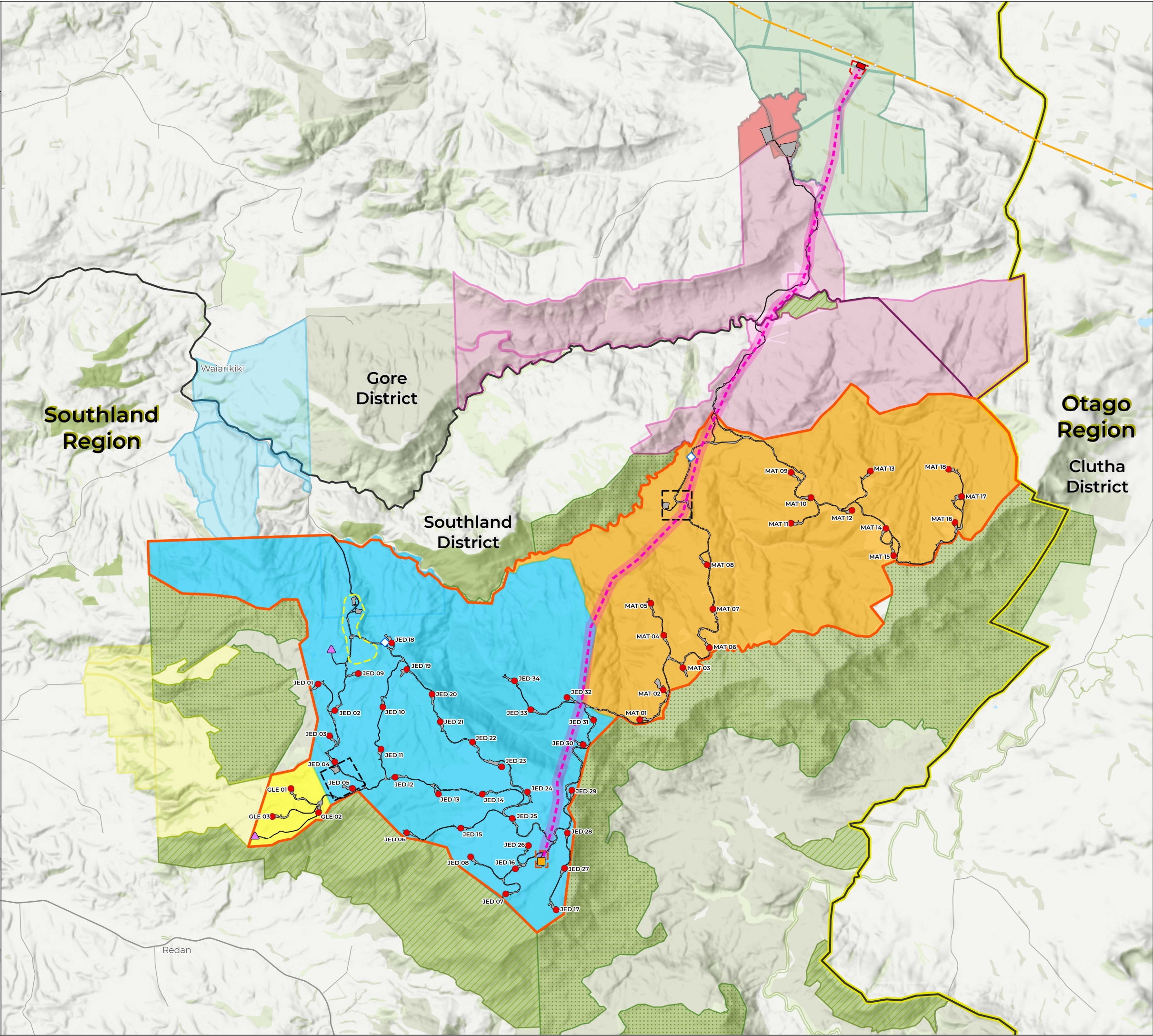
VERSION

1.0

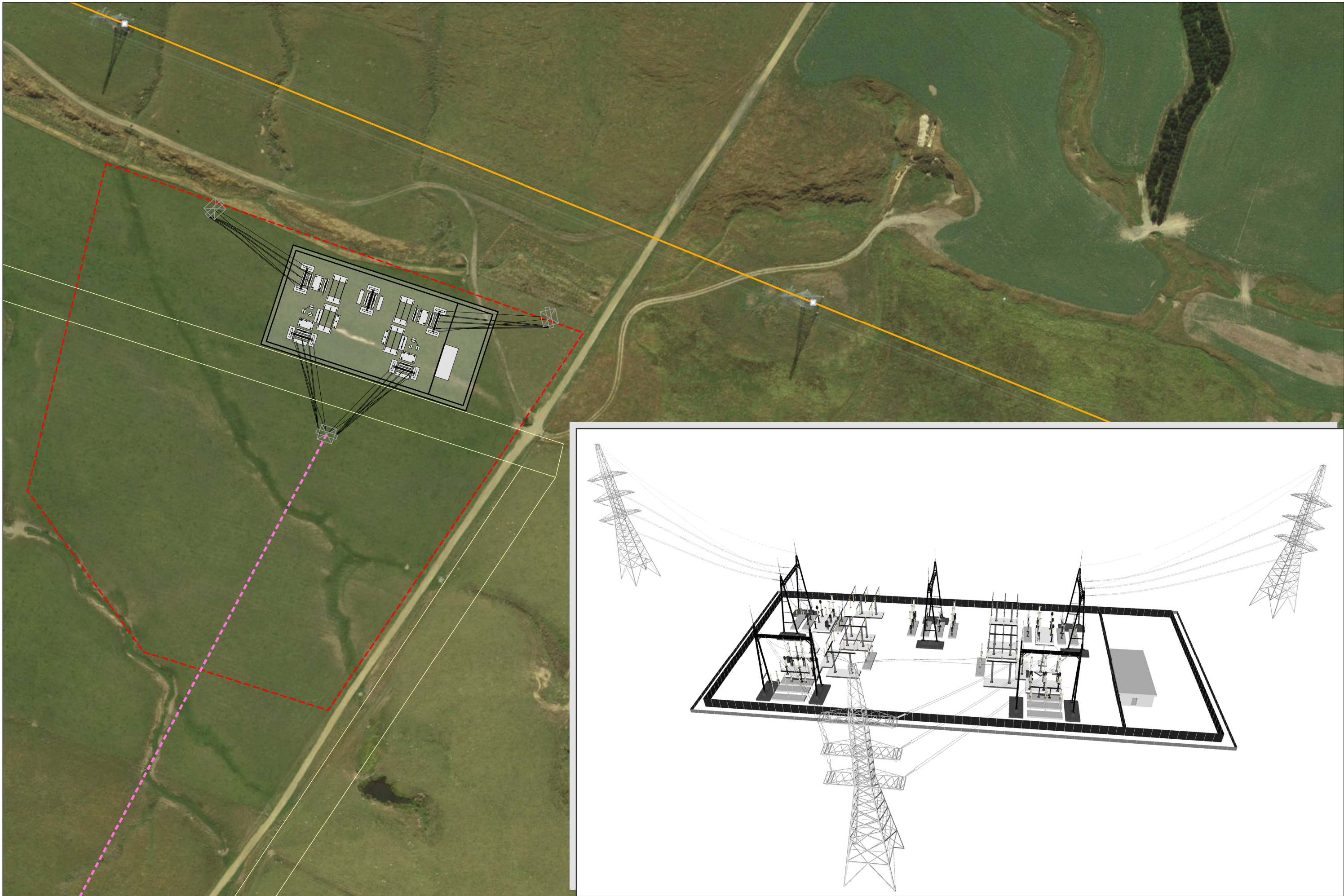


TITLE

**FIGURE PROJECT DESCRIPTION - 2A**  
SOUTHLAND WIND FARM  
PROJECT SITE PLAN

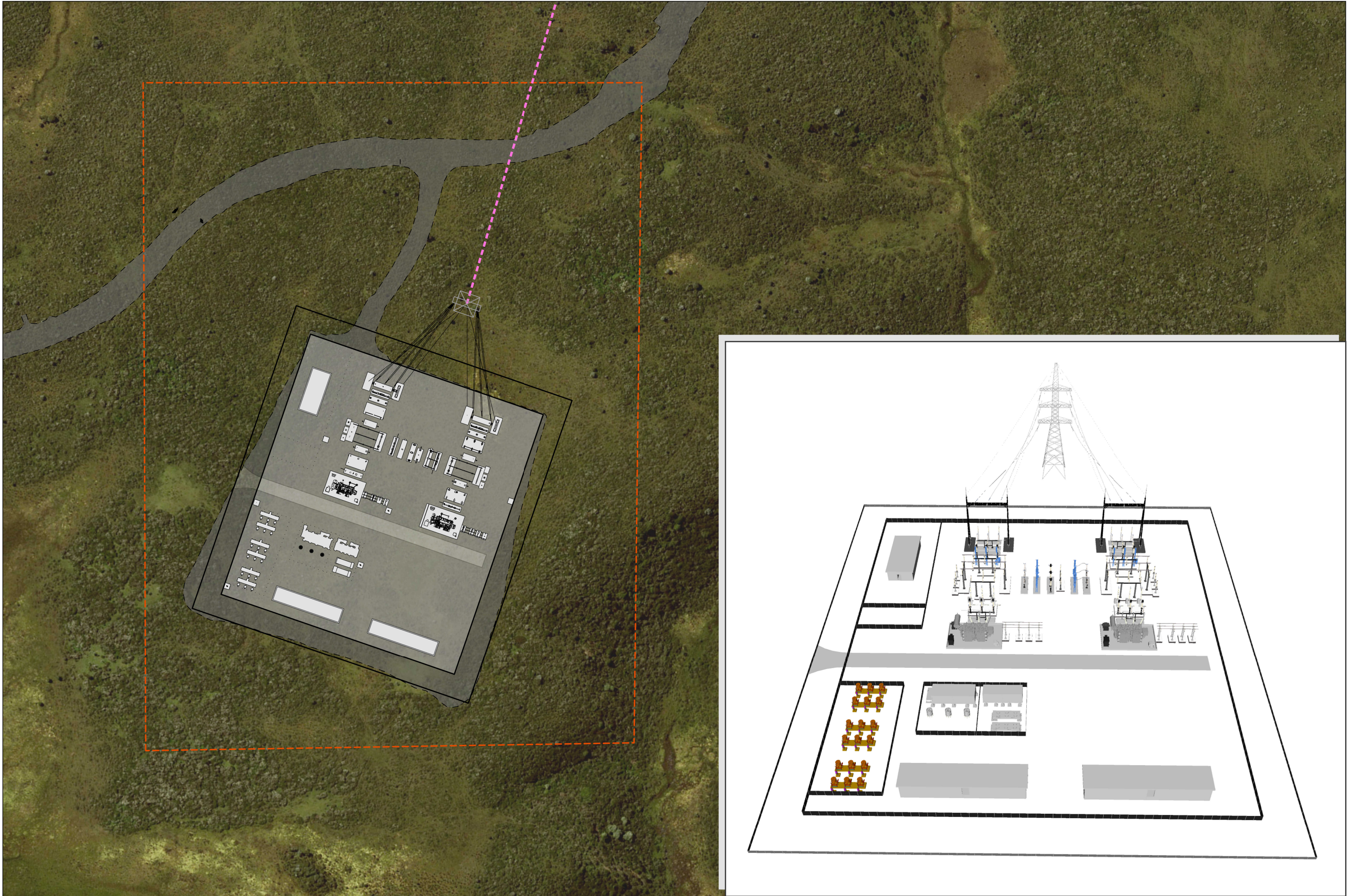


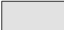









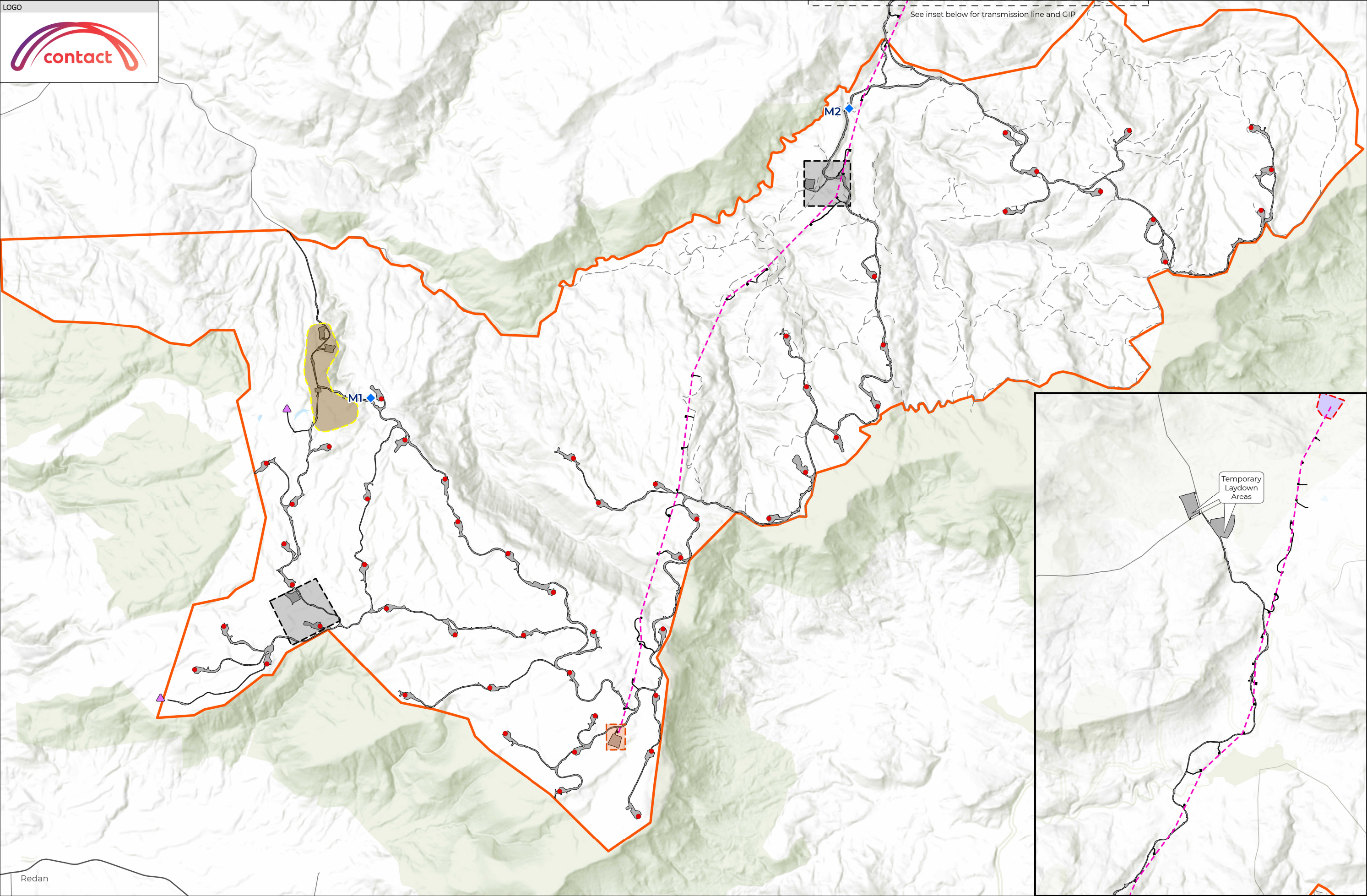
<b>LEGEND</b> <div> <div>Preliminary GIP Layout</div> <div>Paper Road</div> <div>Transpower Towers</div> </div> <div> <div>Preliminary GIP Boundary Fence</div> <div>Transmission Line Route</div> <div>Transpower 220kV Transmission Line</div> </div> <div> <div>Preliminary Towers</div> <div>GIP Envelope Area</div> </div>			<b>LOGO</b> 	<b>MAP SCALE</b> <div> N    Scale: 1:2,000  0 12.5 25 50 75 Meters  </div>	<b>PRINT DATE</b> 26/06/2025 <b>VERSION</b> 1.0	<b>TITLE</b> <b>FIGURE PROJECT DESCRIPTION - 3</b> CONCEPTUAL LAYOUT OF THE GRID INJECTION POINT
--	--	--	-----------------	---	--	--





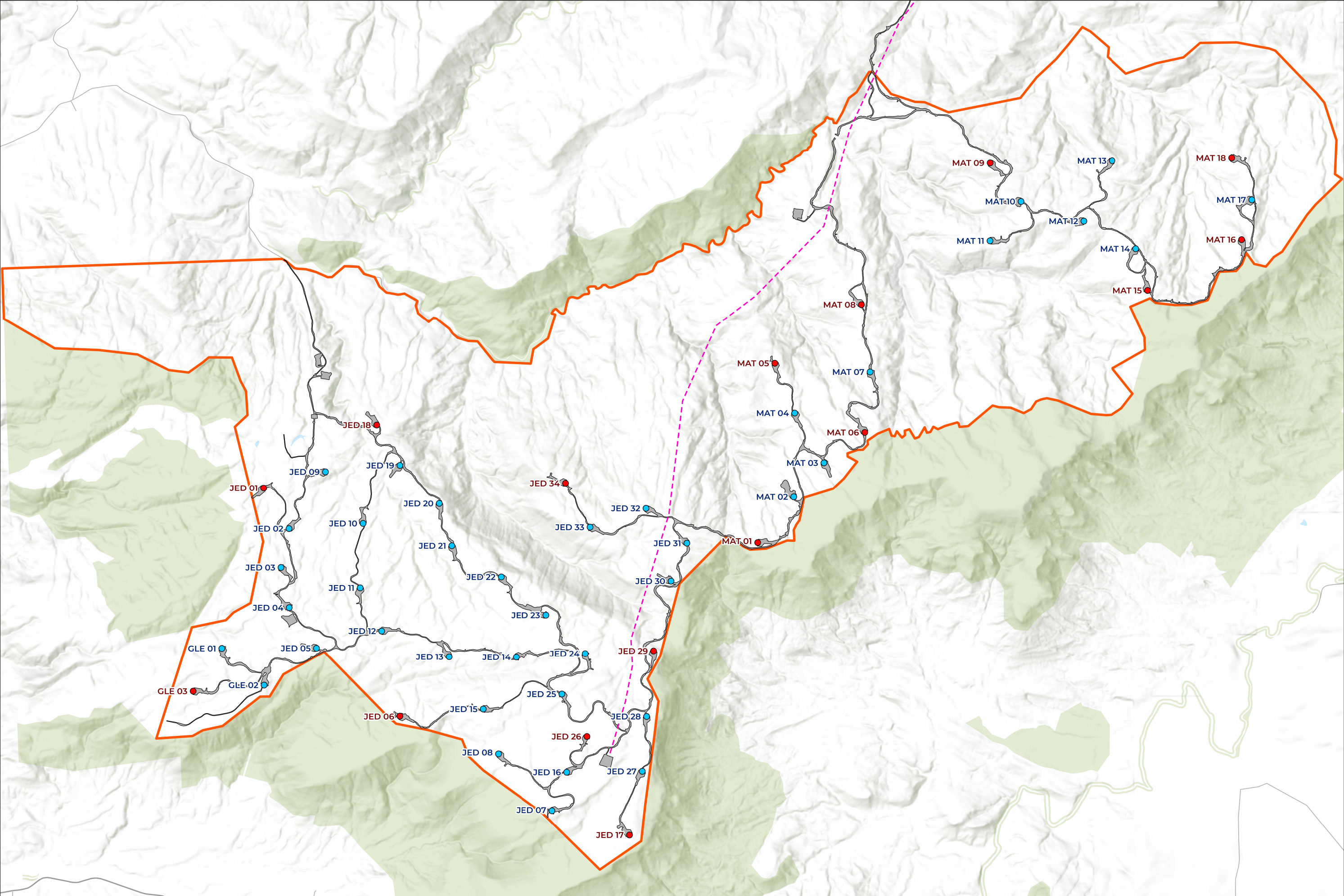
LEGEND		LOGO	MAP SCALE	PRINT DATE	TITLE
	Preliminary Sub Station Layout		Scale: 1:1,500 N 0 12.5 25 50 75 Meters	26/06/2025	<b>FIGURE PROJECT DESCRIPTION - 4</b> CONCEPTUAL LAYOUT OF THE SUB STATION AREA
	Preliminary Sub Station Boundary Fence			VERSION	
	Preliminary Tower			1.0	
	Transmission Line Route				
	Substation Envelope Area				
	Civil Works Design				





<b>LEGEND</b>		<b>MAP SCALE</b> Scale: 1:40,000 0 0.5 1 2 Kilometers N	<b>PRINT DATE</b> 1/07/2025	<b>TITLE</b> <b>FIGURE PROJECT DESCRIPTION - 5</b> ENVELOPE AREAS, CIVIL WORKS DESIGN AND POTENTIAL WATER TAKE LOCATIONS
● Wind Turbines	--- Transmission Line Route		<b>VERSION</b> 1.0	
▲ Permanent Meteorological Mast	--- Existing Forestry Roads			
◆ Potential Water Take Location	□ Wind Farm Site			
■ Transmission Line Access & Civil Works	■ Civil Works Design			
■ Water Storage & Batching Plant Envelope Areas	■ O&M Building Location Envelope Area			
	■ Substation Envelope Area			
	■ GIP Envelope Area			









LEGEND

- Wind Turbines
  - Transmission Line Route
  - Civil Works Design
  - Wind Farm Site
  - Jedburgh Plateau (c. 530 ha)
  - Surplus Fill Disposal Sites
- Mapped Wetlands
- Bog wetland
  - Fen wetland
  - Copper tussock/rautahi marsh
  - Copper tussock-rautahi swamp
  - Mānuka-inaka/copper tussock marsh

Mapped Vegetation EcoValue

- Low
- Negligible
- Moderate
- High
- Very high

MAP SCALE



Scale: 1:50,000

PRINT DATE

15/08/2025

VERSION

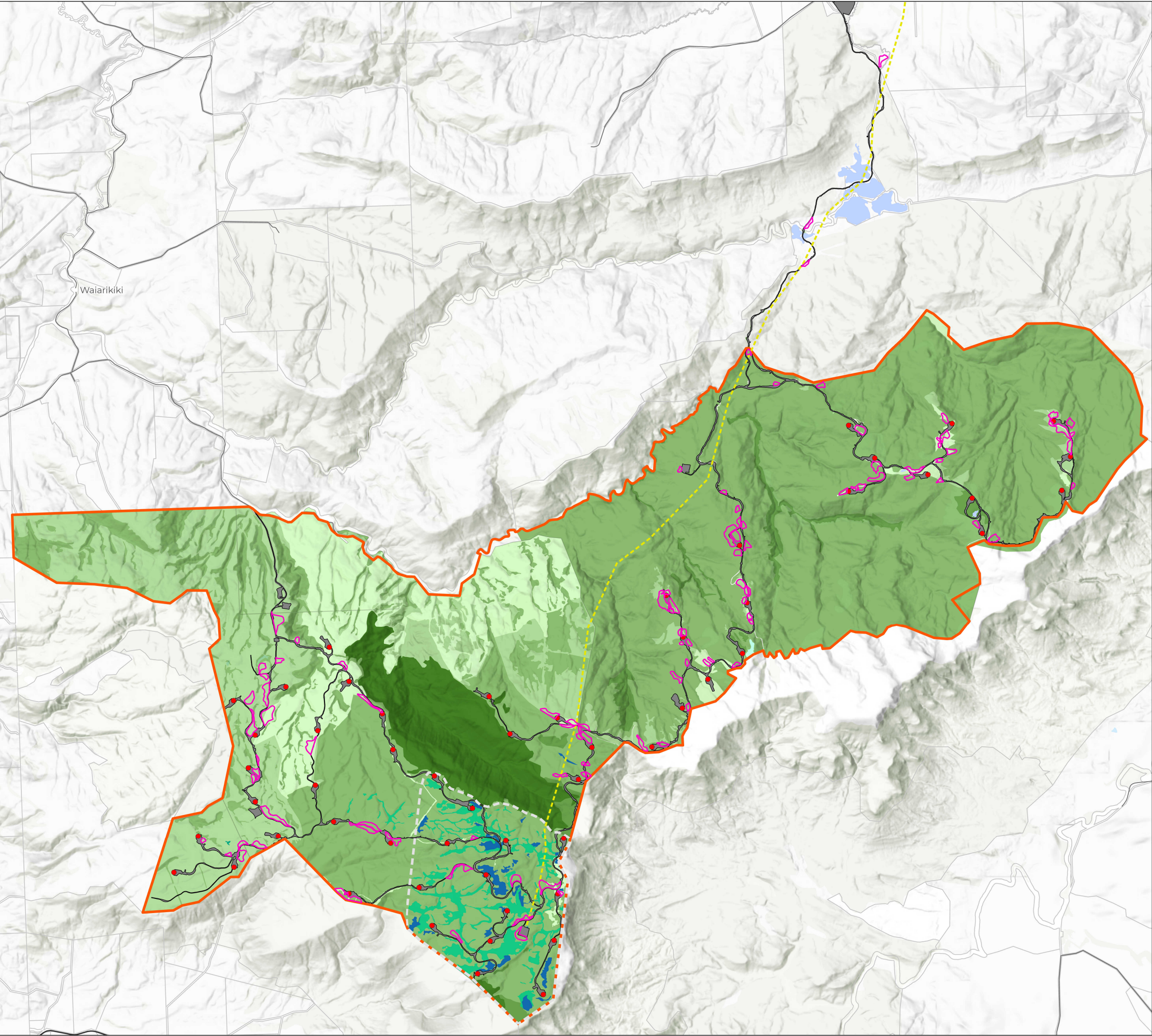
1.0

Kilometers

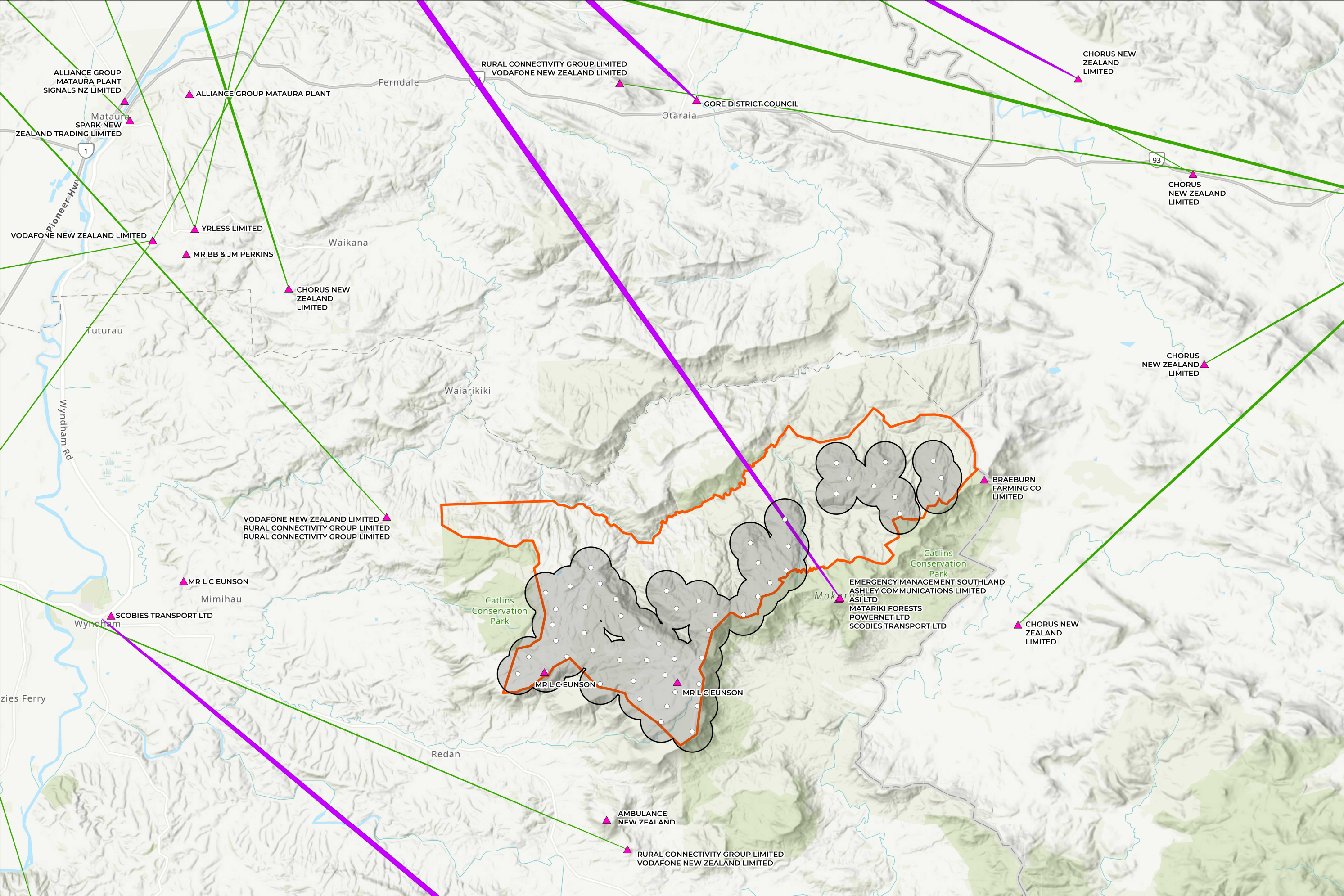


TITLE

**FIGURE PROJECT DESCRIPTION - 7**  
POTENTIAL SURPLUS FILL DISPOSAL SITES  
AND MAPPED VEGETATION ECO-VALUES

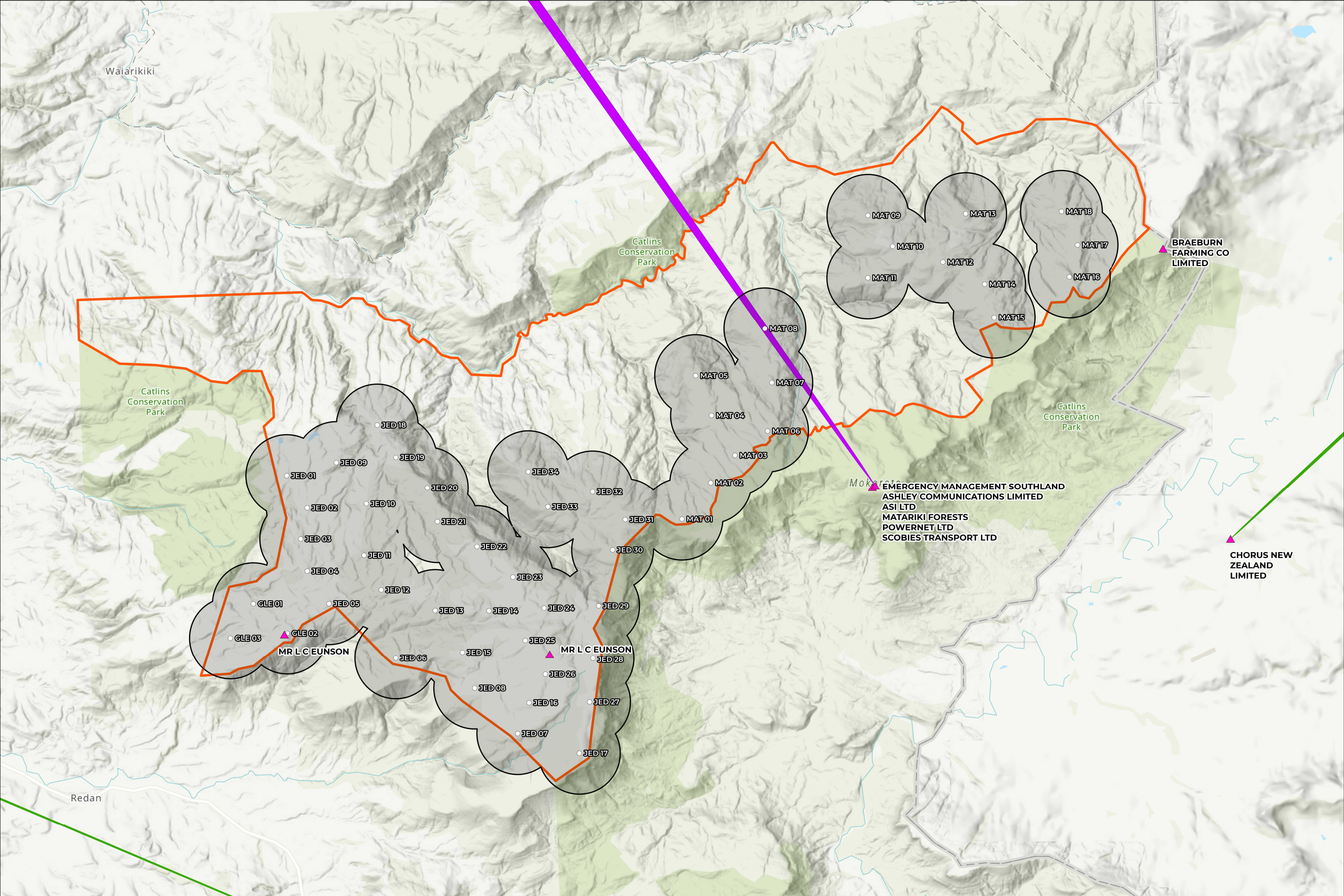






<b>LEGEND</b>		<b>LOGO</b>		<b>MAP SCALE</b>		<b>PRINT DATE</b>	<b>TITLE</b> <b>FIGURE RADIO COMPATIBILITY - 1</b> FIXED RADIO LINKING SERVICES OPERATING NEAR THE WIND FARM SITE
○ Wind Turbines	▲ Licensed Wide Area Radio Service	<b>Fixed Radio Linking Services</b> Low Capacity (<1 GHz) Microwave (>1 GHz)		Scale: 1:100,000 0 1 2 4 Kilometers		26/06/2025	
Wind Farm Site	600m Co-ordination Contour					VERSION 1.0	





<b>LEGEND</b>		<b>LOGO</b>	<b>MAP SCALE</b>	<b>PRINT DATE</b>	<b>TITLE</b>
○ Wind Turbines	▲ Licensed Wide Area Radio Service		Scale: 1:50,000 N 0 0.5 1 2 Kilometers	26/06/2025	<b>FIGURE RADIO COMPATIBILITY - 2</b> CLOSE UP OF LICENSED WIDE AREA TRANSMITTERS 2 X Mr L C Eunson Transmitters located within the co-ordination zone
▭ Wind Farm Site	▭ 600m Co-ordination Contour			VERSION	
<b>Fixed Radio Linking Services</b>				1.0	
▭ Low Capacity (<1 GHz)					
▭ Microwave (>1 GHz)					





LEGEND

- Surrounding Dwellings
- Wind Turbines
- Wind Farm Site
- Access Track & Temporary Laydown Areas
- Wind Farm Civil Works Footprint

Shadow Flicker  
Max theoretical Hrs/Year

- 0.1 - 10
- 10 - 30
- 30 - 100
- 100 - 500
- 500 - 2,000

MAP SCALE



Scale: 1:65,000

PRINT DATE

26/06/2025

VERSION

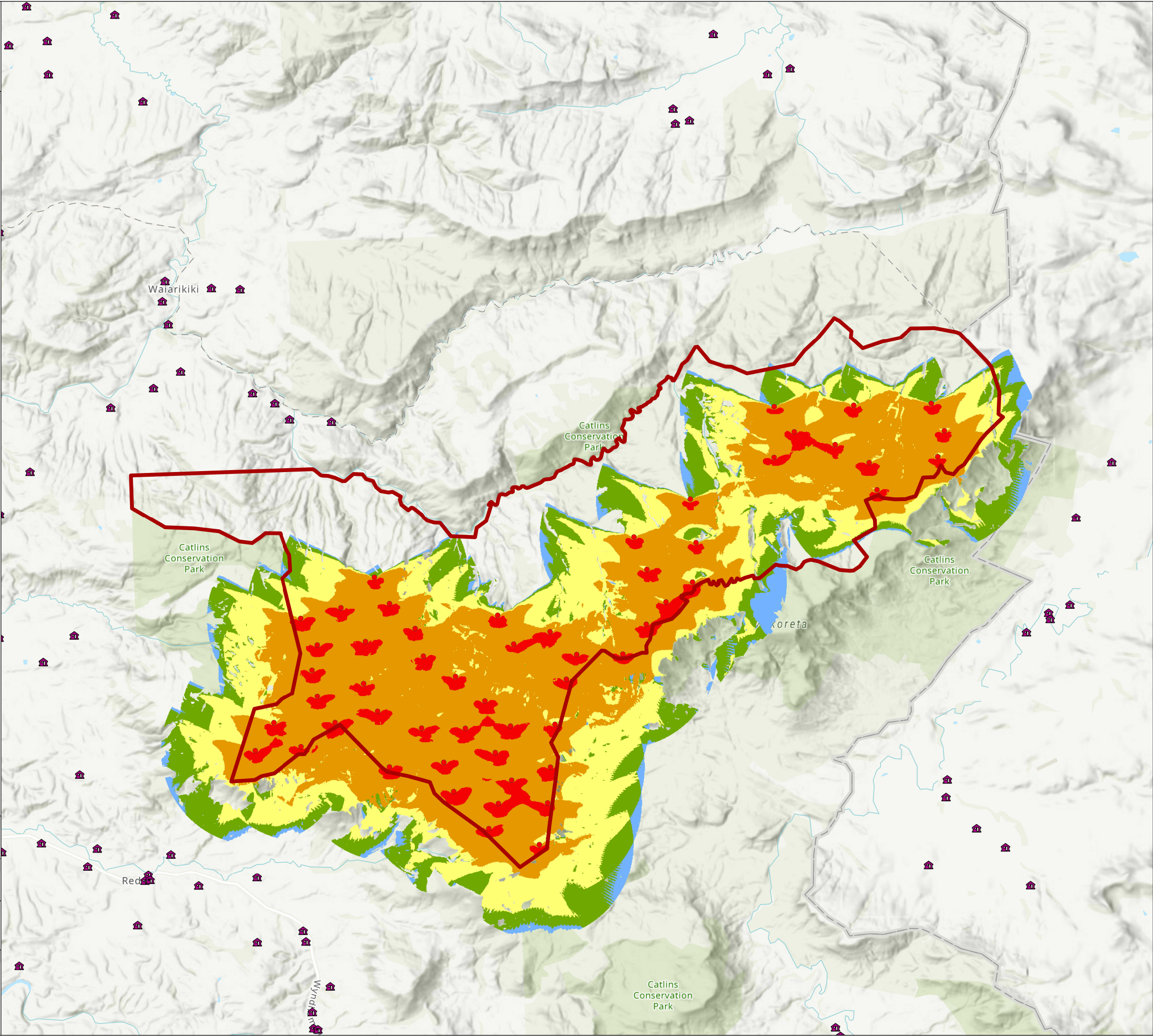
1.0




TITLE

**FIGURE SHADOW FLICKER - 1**

MODELLLED SHADOW FLICKER  
MAX THEORETICAL HRS PER YEAE








LEGEND

- Wind Farm Transmission Line
- Wind Farm Site
- District Boundaries
- Region Boundaries
- Flooding Inundation Overlay
- Ngai Tahu Statutory Acknowledgement
- Rivers and Streams Requiring Esplanade Mechanisms
- Verandah Requirements
- Noise Sensitive Activity Exclusion Zone
- Commercial Precincts
- Development Areas
- Designations

Zones

- General Industrial Zone (GIZ)
- General Residential Zone (GRZ)
- General Rural Zone (GRUZ)

**Data Credits: Zoning and Overlays**  
Southland District Council's Operative District ePlan  
<https://eplan.southlanddc.govt.nz/eplan>

MAP SCALE	PRINT DATE
 Scale: 1:100,000	13/08/2025
	VERSION
	1.0

Kilometers

0

0.5

1

2

3

4

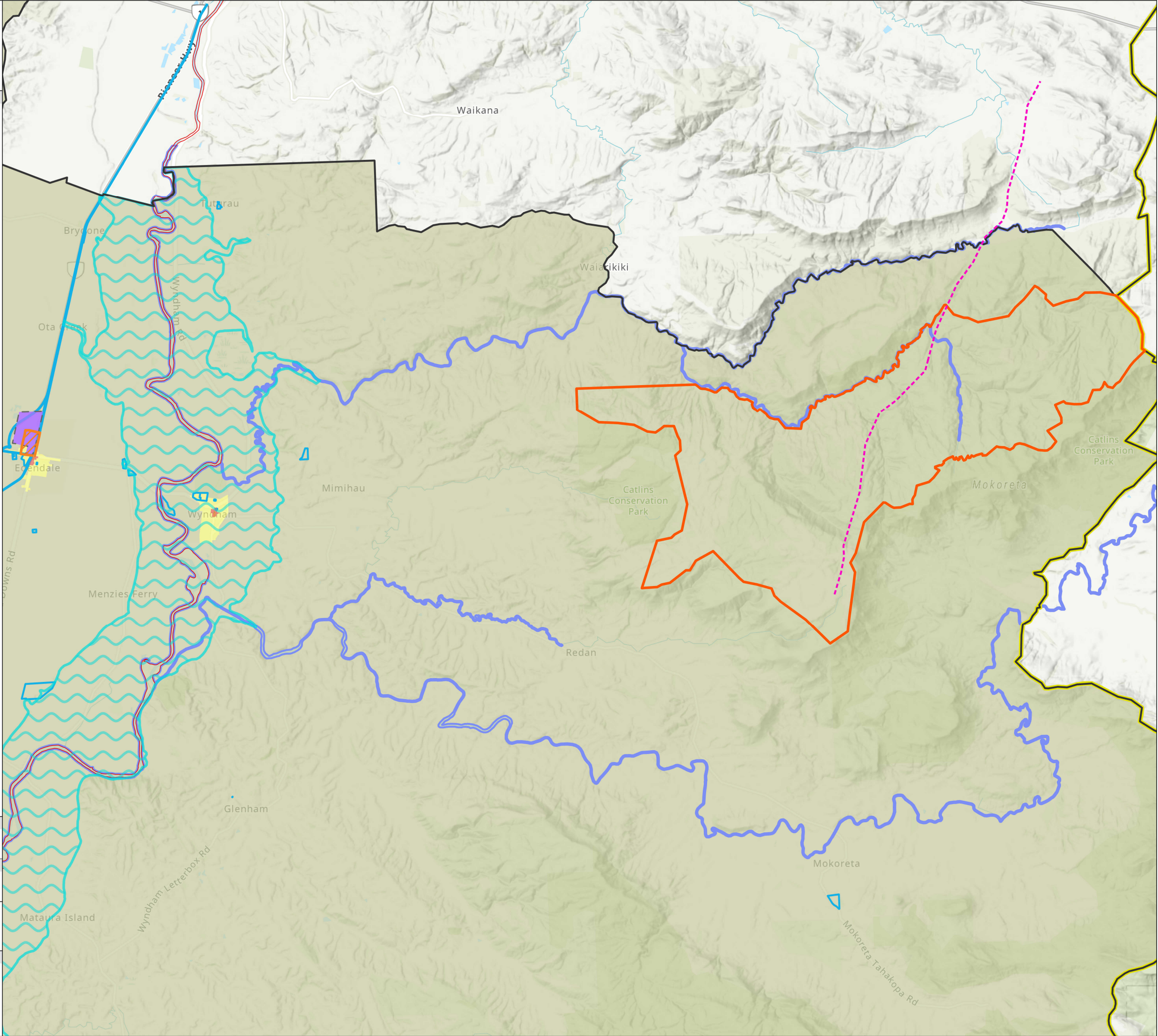
5

6

TITLE

**FIGURE PART B - 1**

SOUTHLAND DISTRICT PLAN  
ZONING AND OVERLAYS







LEGEND

Wind Farm

- Wind Turbines
- Wind Farm Site

Dwellings

- Dwellings
- Wind Turbine Buffer - 1km Intervals

MAP SCALE



Scale: 1:125,000

PRINT DATE

14/08/2025

VERSION

1.0

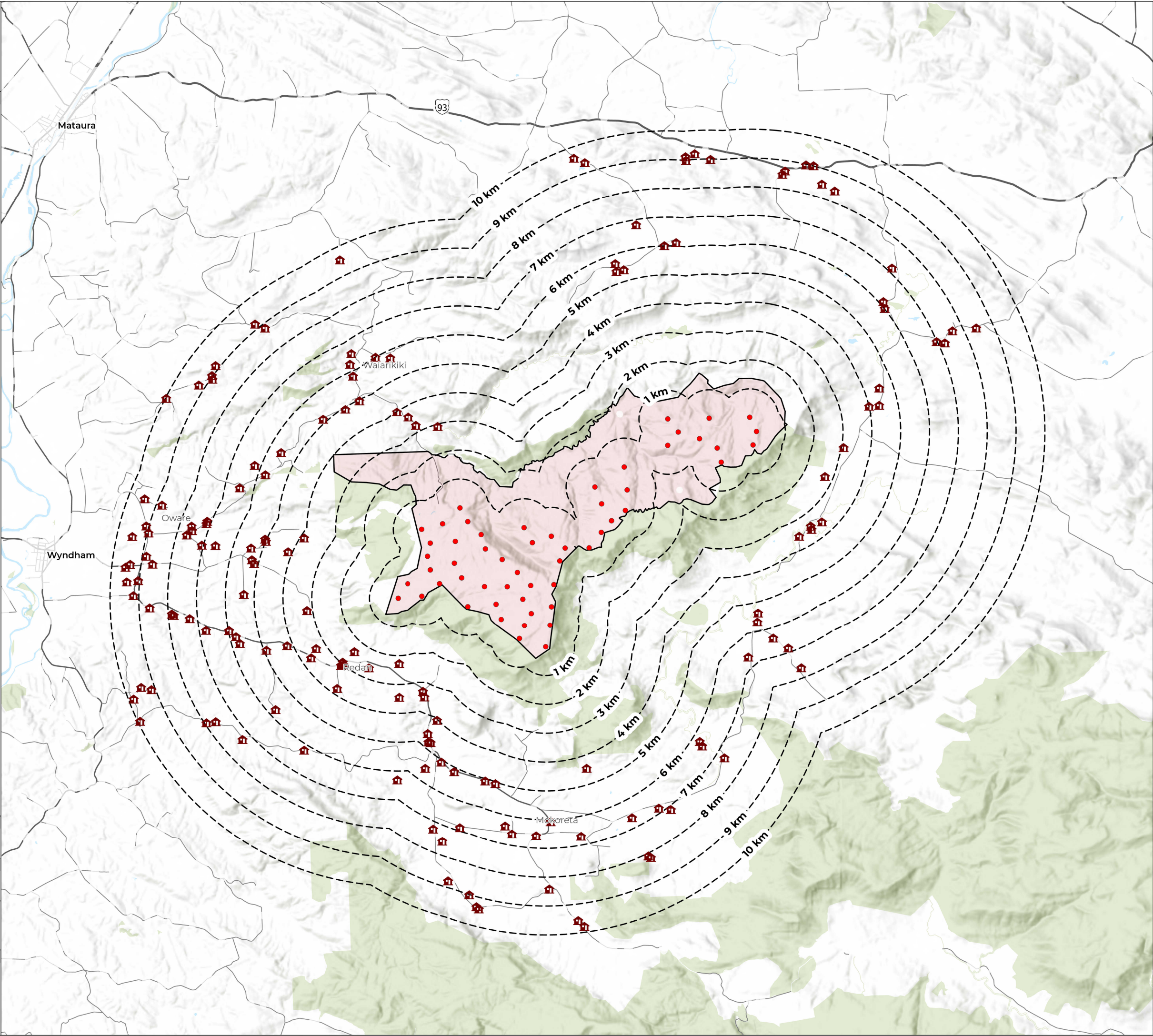
Kilometers



TITLE

FIGURE PART B - 2

DWELLINGS WITHIN 10KM OF  
PROPOSED WIND TURBINES







#### LEGEND

- Wind Turbines
- ◆ Grid Injection Point (GIP)
- Sub Station
- Transmission Line Route
- Transpower 220kV Transmission Line
- Civil Works Design
- Wind Farm Site
- District Council Boundary
- Regional Council Boundary

#### Land Use Capability

- LUC Class 1
- LUC Class 2
- LUC Class 3
- LUC Class 4
- LUC Class 5
- LUC Class 6
- LUC Class 7
- LUC Class 8

Data Credits:  
NZLRI Land Use Capability 2021  
<https://iris.scinfo.org.nz/layer/48076-nzlri-land-use-capability-2021/>

Data reproduced with the permission of Landcare Research New Zealand Limited

#### MAP SCALE



Scale: 1:65,000

#### PRINT DATE

20/08/2025

#### VERSION

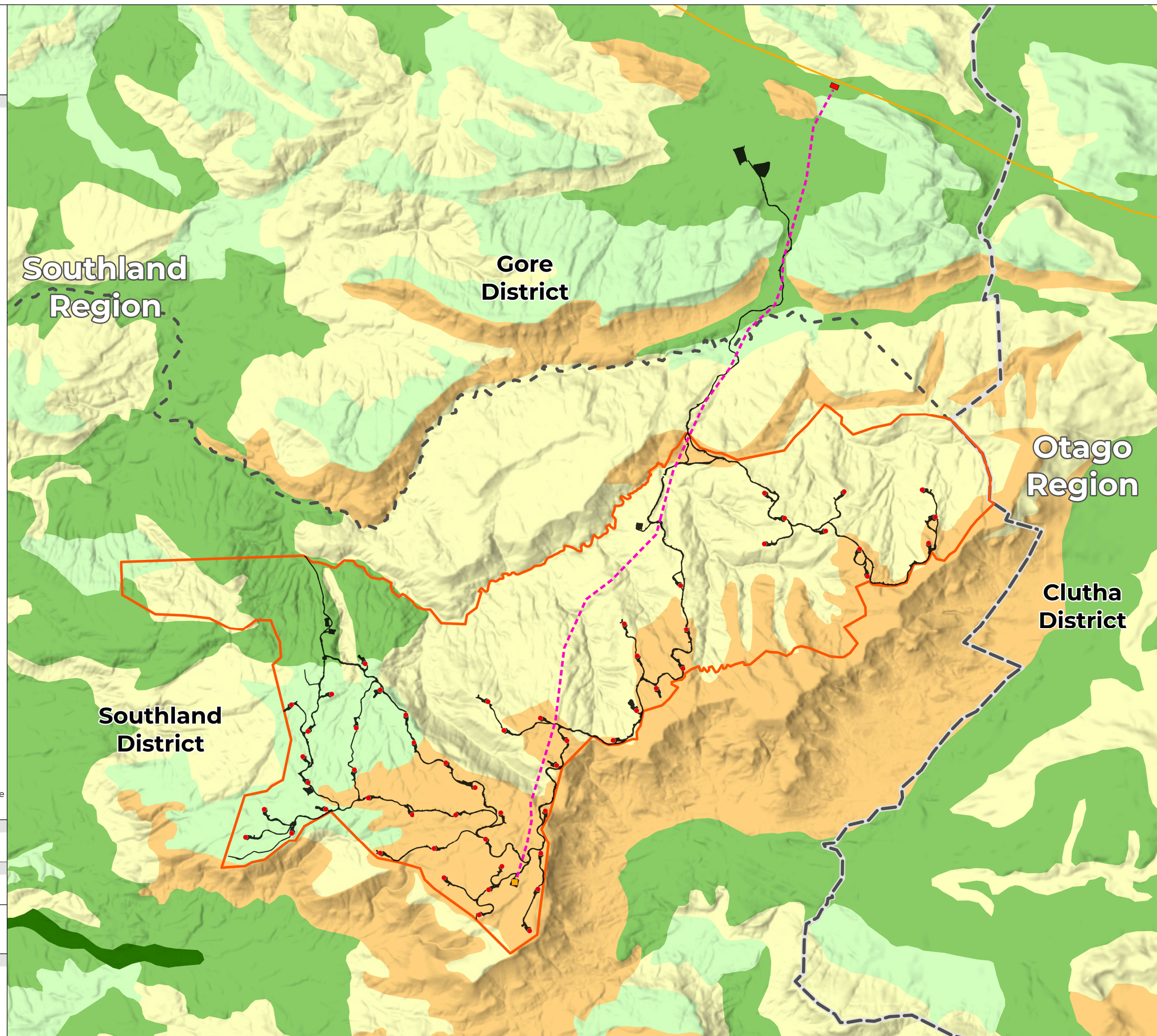
1.0



#### TITLE

### FIGURE PART B - 3

NZLRI LAND USE CAPABILITY







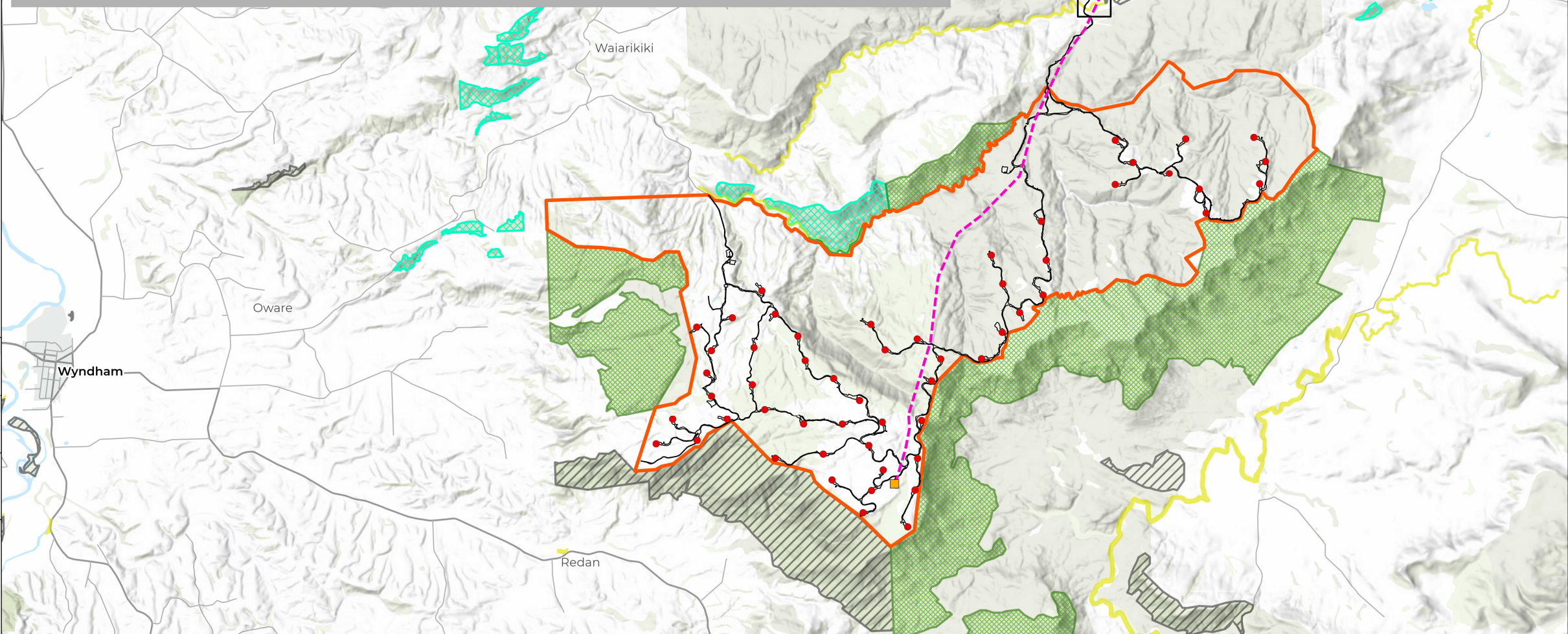
LEGEND

Wind Farm

- Wind Turbines
- Sub Station
- Grid Injection Point (GIP)
- - - Transmission Line Route
- Transpower 220kV Transmission Line
- Civil Works Design
- Wind Farm Site

DoC and Property Parcels

- DoC Conservation Park (s.19)
- DoC Fixed Marginal Strip (s.24(3))
- DoC Stewardship Area (s.25)
- Property Parcels (LINZ)



MAP SCALE



Scale: 1:100,000

PRINT DATE

26/06/2025

VERSION

1.0



TITLE

**FIGURE PART C - 1**  
PROPOSED MIMIHAU STREAM NORTH  
BRANCH CROSSING LOCATION AND  
DOC MARGINAL STRIP