



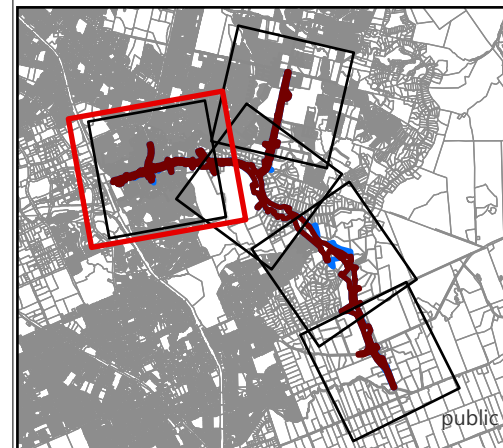


## Stage 1

-  Existing designation boundary (Designation 1836)  
 Proposed alteration to designation  
 Adjacent land  
 Directly affected



This map contains data derived in part or wholly from sources other than those party to the Supporting Growth Alliance, and therefore, no representations or warranties are made by those party to the Supporting Growth Alliance as to the accuracy or completeness of this information.

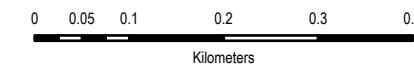
Map intended for distribution as a PDF document.  
Scale may be incorrect when printed.

Contains information sourced from LINZ. Crown Copyright Reserved.

Unitary plan data sourced from Auckland Council published web services.  
Legend information can be viewed on Auckland Council unitary plan viewer.

Linework shown on this plan is conceptual only.  
Not to be used for construction.

Map Scale @ A3: 1:8,000



Revision	Author	Verified	Approved	Date
2	RR9	Himani	DRAFT	25/06/2025
1	RR9	Himani	DRAFT	23/06/2025

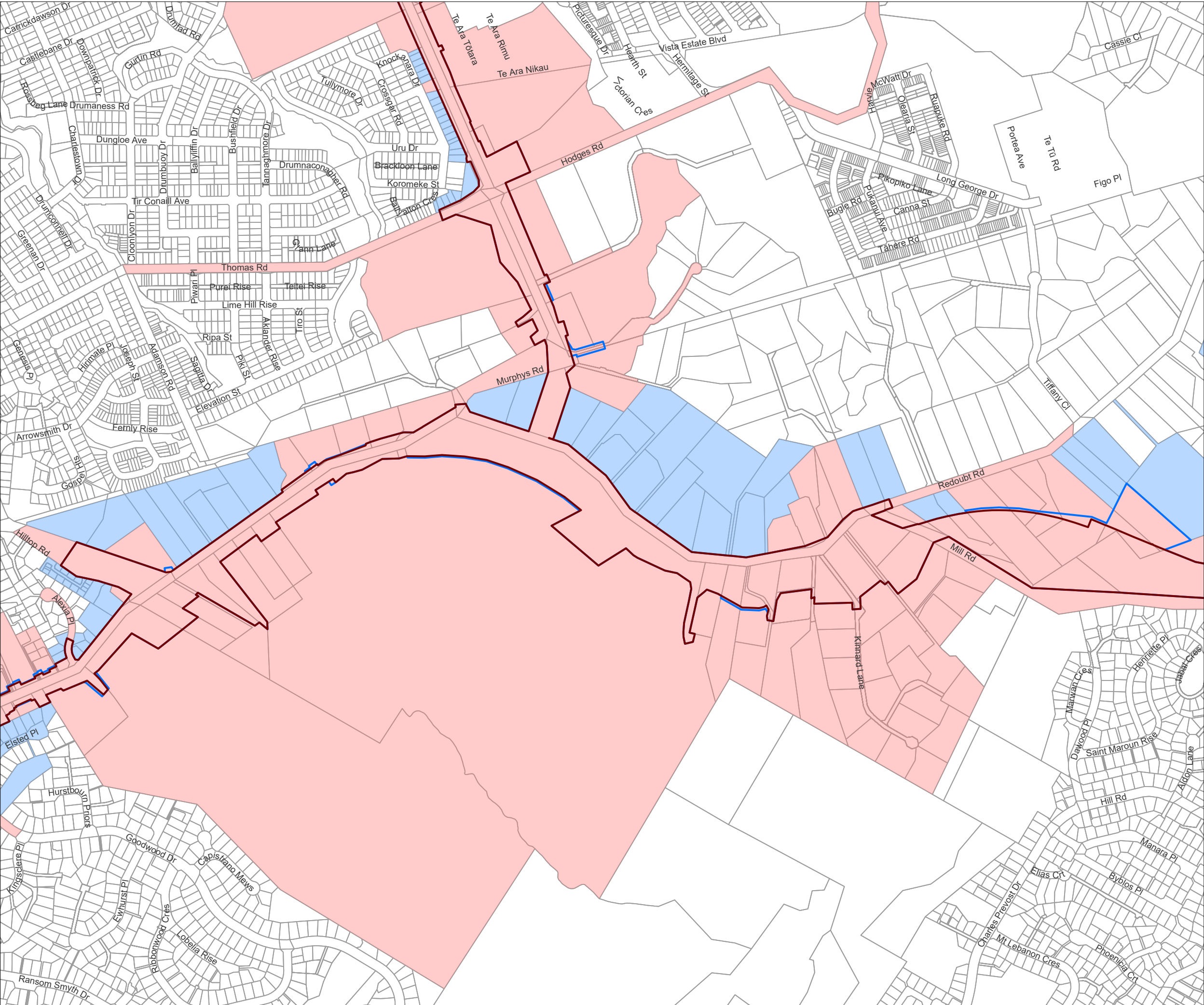
Client: **New Zealand Transport Agency**

Discipline:	GIS
-------------	-----

Project: **Mill Road (Stage 1)**

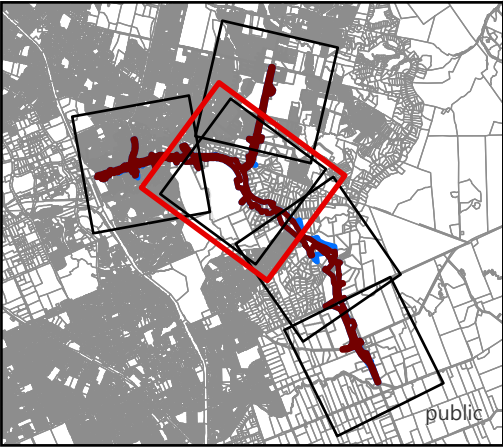
Drawing No:	GIS-3011550-2
-------------	---------------





Mill Road  
Stage 1

- Existing designation boundary (Designation 1836)
- Proposed alteration to designation
- Adjacent land
- Directly affected



This map contains data derived in part or wholly from sources other than those party to the Supporting Growth Alliance, and therefore, no representations or warranties are made by those party to the Supporting Growth Alliance as to the accuracy or completeness of this information.

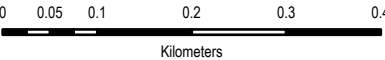
Map intended for distribution as a PDF document.  
Scale may be incorrect when printed.

Contains information sourced from LINZ. Crown Copyright Reserved.

Unitary plan data sourced from Auckland Council published web services.  
Legend information can be viewed on Auckland Council unitary plan viewer.

Linework shown on this plan is conceptual only.  
Not to be used for construction.

Map Scale @ A3: 1:8,000



Revision	Author	Verified	Approved	Date
2	RR9	Himani	DRAFT	25/06/2025
1	RR9	Himani	DRAFT	23/06/2025



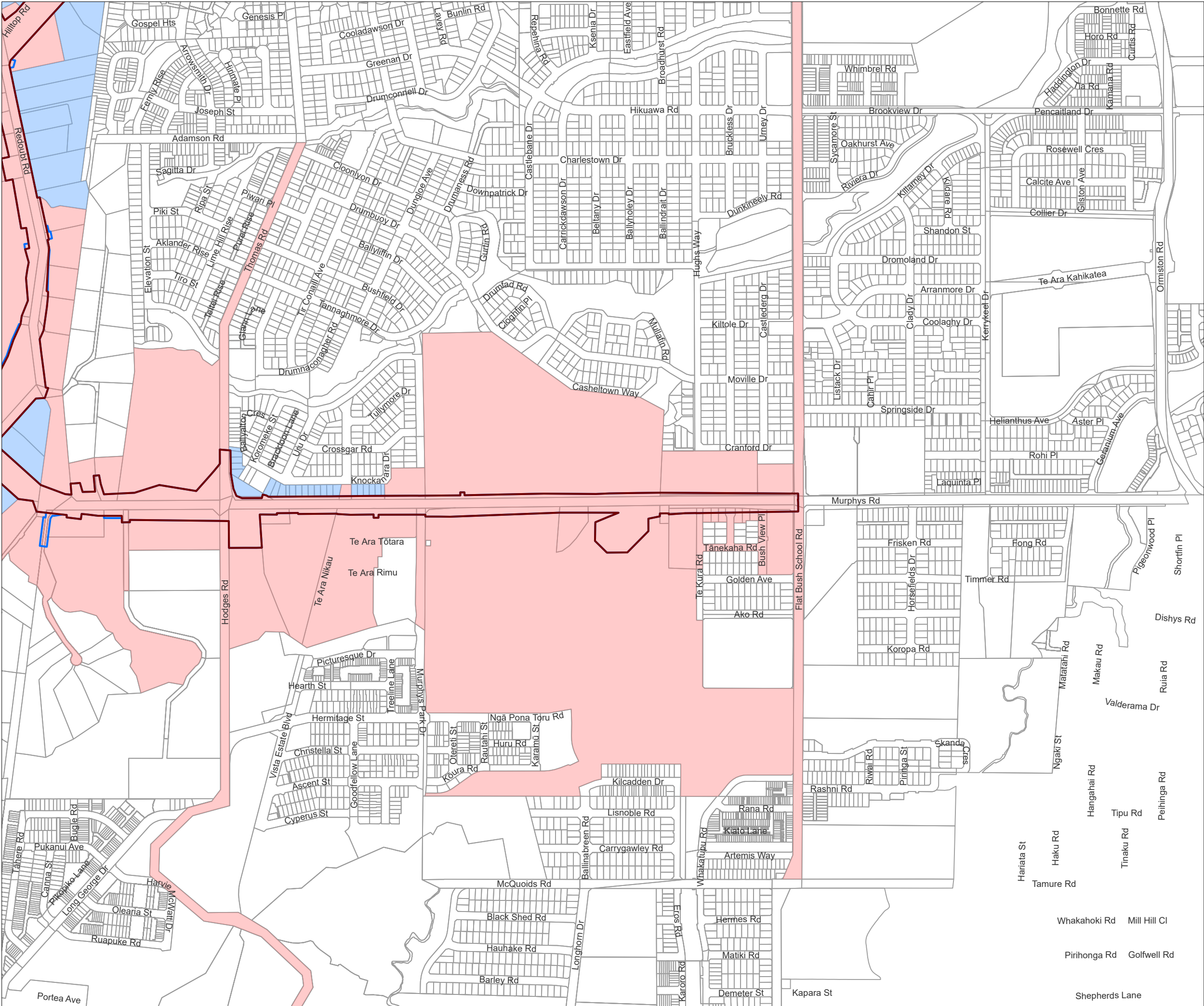
Client:  
New Zealand Transport Agency

Discipline:  
GIS

Project:  
Mill Road (Stage 1)

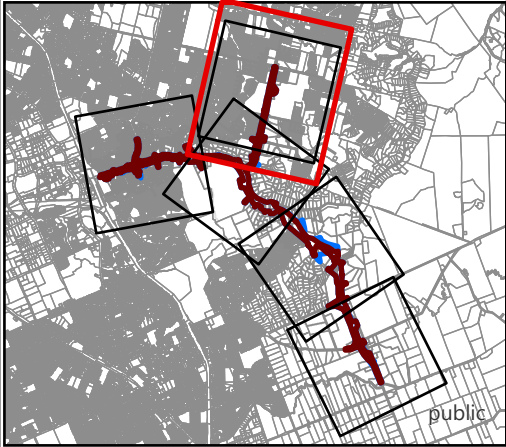
Drawing No:  
GIS-3011550-2





### Mill Road Stage 1

- Existing designation boundary (Designation 1836)
- Proposed alteration to designation
- Adjacent land
- Directly affected



This map contains data derived in part or wholly from sources other than those party to the Supporting Growth Alliance, and therefore, no representations or warranties are made by those party to the Supporting Growth Alliance as to the accuracy or completeness of this information.

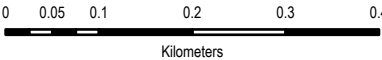
Map intended for distribution as a PDF document.  
Scale may be incorrect when printed.

Contains information sourced from LINZ. Crown Copyright Reserved.

Unitary plan data sourced from Auckland Council published web services.  
Legend information can be viewed on Auckland Council unitary plan viewer.

Linework shown on this plan is conceptual only.  
Not to be used for construction.

Map Scale @ A3: 1:8,100



Revision	Author	Verified	Approved	Date
2	RRR	Himani	DRAFT	25/06/2025
1	RRR	Himani	DRAFT	23/06/2025



Client:  
**New Zealand Transport Agency**

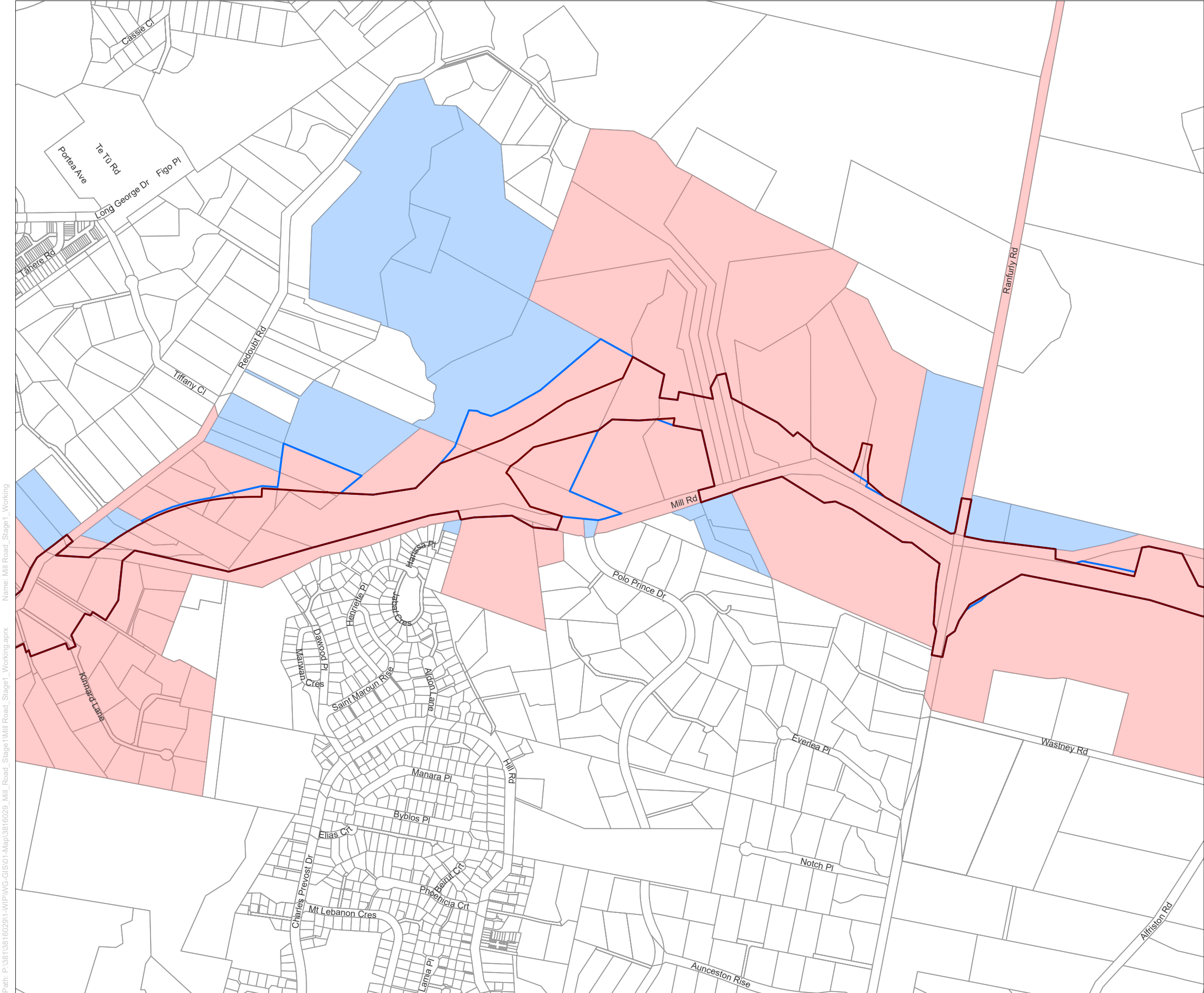
Discipline:  
**GIS**

Project:  
**Mill Road (Stage 1)**

Drawing No:  
**GIS-3011550-2**

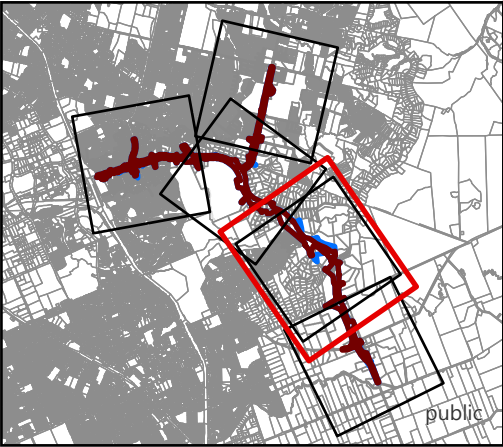






Mill Road  
Stage 1

- Existing designation boundary (Designation 1836)
- Proposed alteration to designation
- Adjacent land
- Directly affected



This map contains data derived in part or wholly from sources other than those party to the Supporting Growth Alliance, and therefore, no representations or warranties are made by those party to the Supporting Growth Alliance as to the accuracy or completeness of this information.

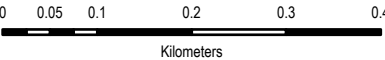
Map intended for distribution as a PDF document.  
Scale may be incorrect when printed.

Contains information sourced from LINZ. Crown Copyright Reserved.

Unitary plan data sourced from Auckland Council published web services.  
Legend information can be viewed on Auckland Council unitary plan viewer.

Linework shown on this plan is conceptual only.  
Not to be used for construction.

Map Scale @ A3: 1:8,000



Revision	Author	Verified	Approved	Date
2	RR9	Himani	DRAFT	25/06/2025
1	RR9	Himani	DRAFT	23/06/2025

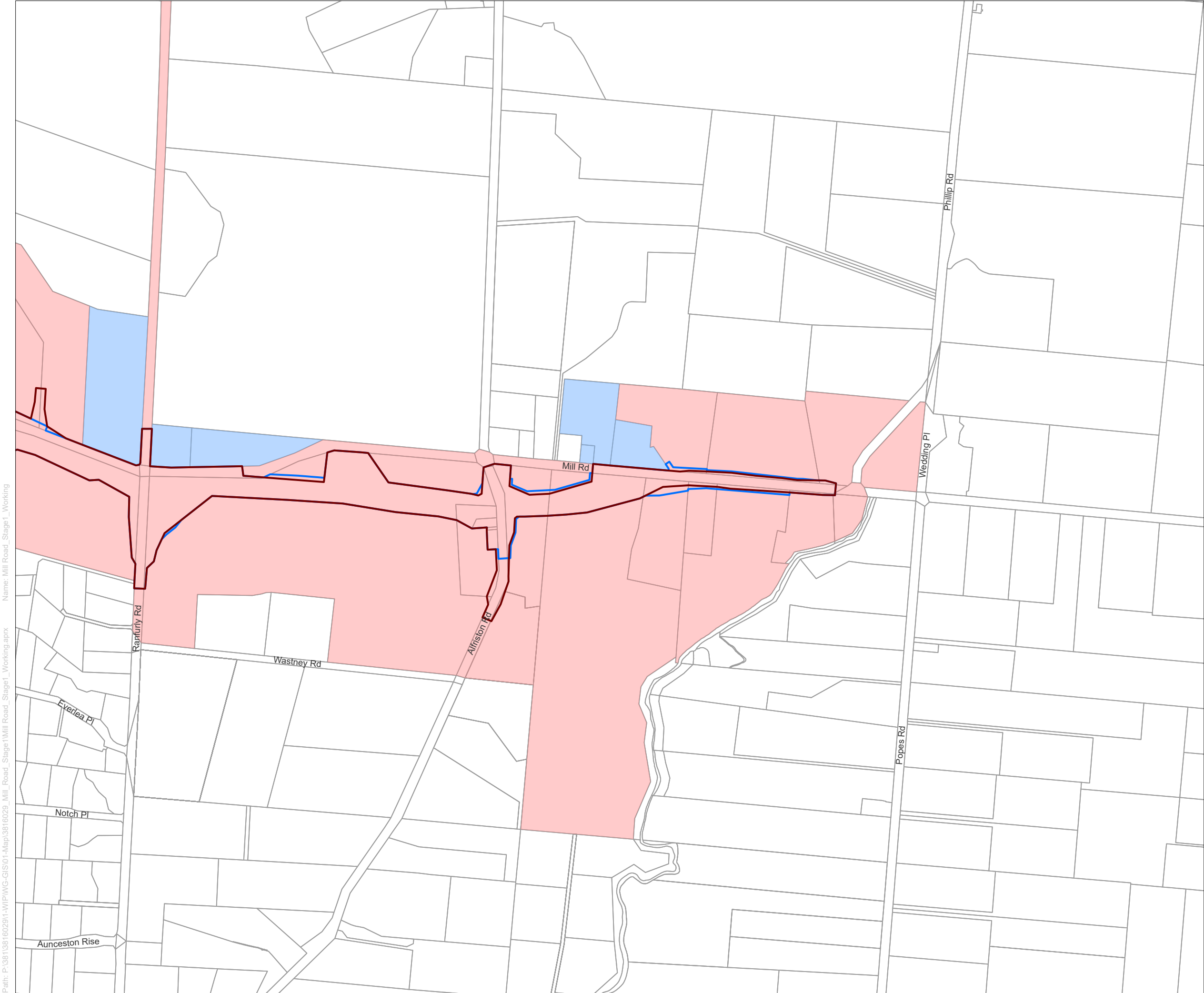


Client:  
New Zealand Transport Agency

Discipline:  
GIS

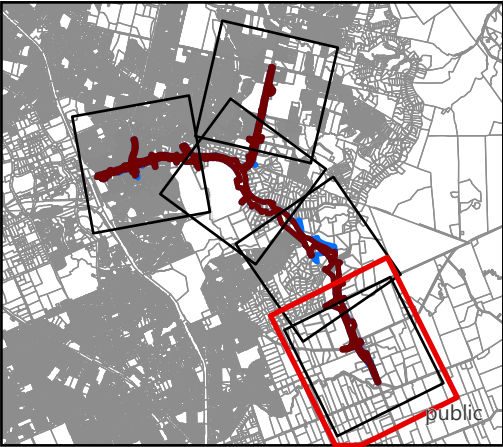
Project:  
Mill Road (Stage 1)

Drawing No:  
GIS-3011550-2



Mill Road  
Stage 1

- Existing designation boundary (Designation 1836)
- Proposed alteration to designation
- Adjacent land
- Directly affected



This map contains data derived in part or wholly from sources other than those party to the Supporting Growth Alliance, and therefore, no representations or warranties are made by those party to the Supporting Growth Alliance as to the accuracy or completeness of this information.

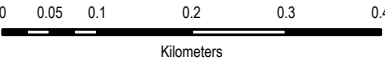
Map intended for distribution as a PDF document.  
Scale may be incorrect when printed.

Contains information sourced from LINZ. Crown Copyright Reserved.

Unitary plan data sourced from Auckland Council published web services.  
Legend information can be viewed on Auckland Council unitary plan viewer.

Linework shown on this plan is conceptual only.  
Not to be used for construction.

Map Scale @ A3: 1:8,000



Revision	Author	Verified	Approved	Date
2	RR9	Himani	DRAFT	25/06/2025
1	RR9	Himani	DRAFT	23/06/2025



Client:  
New Zealand Transport Agency

Discipline:  
GIS

Project:  
Mill Road (Stage 1)

Drawing No:  
GIS-3011550-2