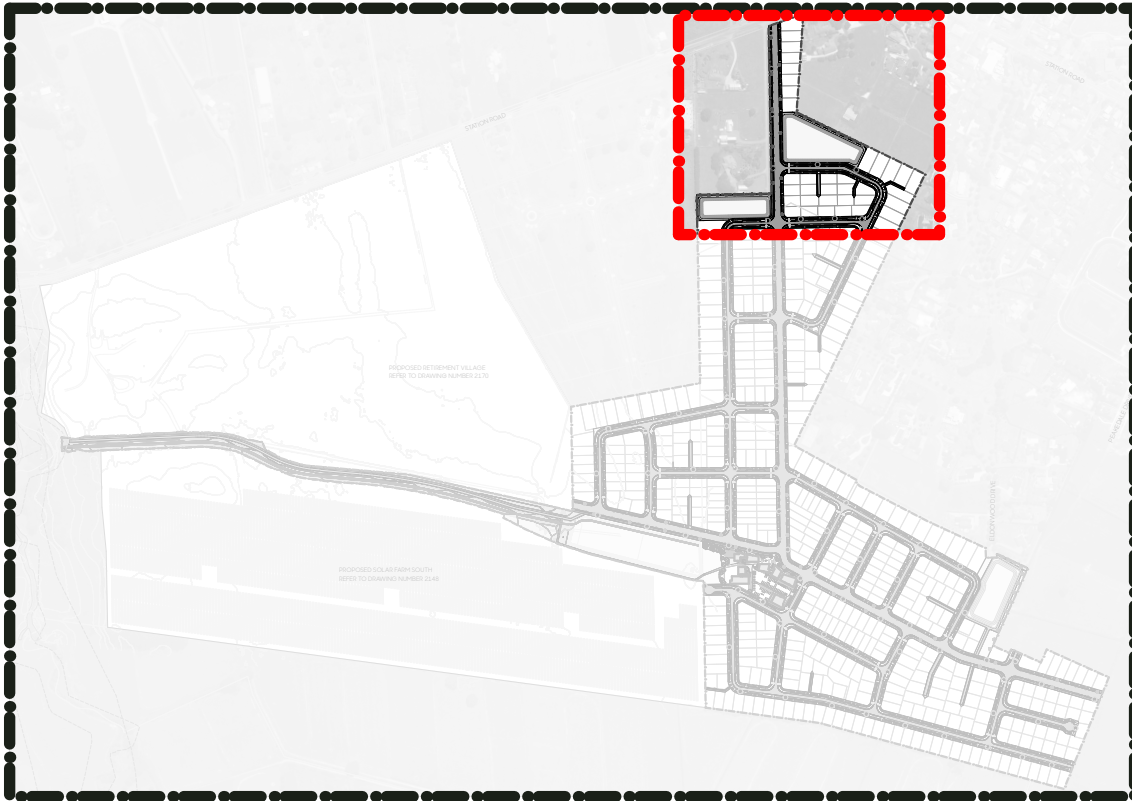


Code	Botanical Name	Common Name	Grade	Spacing
Specimen Trees - Streets				
●	<i>Acer palmatum</i>	Japanese maple	45L	Marked
●	<i>Alectryon excelsus</i>	titoki	45L	Marked
●	<i>Carpinus betulus</i> 'Fastigiata'	upright hornbeam	45L	Marked
●	<i>Hoheria populnea</i>	houhere	45L	Marked
●	<i>Knightia excelsa</i>	rewarewa	45L	Marked
●	<i>Phyllocladus trichomanoides</i>	tānekaha	45L	Marked
●	<i>Plagianthus regius</i>	manatu	45L	Marked
●	<i>Prumnopitys ferruginea</i>	miro	45L	Marked
●	<i>Lagerstroemia indica</i>	crepe myrtle	45L	Marked
●	<i>Quercus rubra</i>	red oak	45L	Marked
●	<i>Sophora microphylla</i>	kōwhai	45L	Marked
●	<i>Vitex lucens</i>	pūriri	45L	Marked
RGM Rain Garden Planting Mix				
	<i>Apodasmia similis</i>	oloi	2L	0.75m
	<i>Blechnum novae-zelandiae</i>	kiokio	2L	0.75m
	<i>Carex secta</i>	pūrei	2L	0.75m
	<i>Coprosma acerosa</i>	sand Coprosma	2L	0.75m
	<i>Corokia cotoneaster</i>	korokio	2L	0.75m
	<i>Dianella nigra</i>	turutu	2L	0.75m
	<i>Muehlenbeckia complexa</i>	pohuehue	2L	0.75m
	<i>Phormium cookianum</i>	wharariki	2L	0.75m
	<i>Pseudopanax crassifolius</i>	horoeke	10L	1m
AP Amenty Planting Mix				
	<i>Coprosma 'Hawera'</i>	groundcover Coprosma	2L	1m
	<i>Dianella nigra</i>	turutu	2L	1m
	<i>Hebe 'Wiri Mist'</i>	shrubby Veronica	2L	1m
	<i>Phormium cookianum</i>	wharariki	2L	1m
BPL Buffer Planting Mix				
	<i>Cardielyne australis</i>	ti kōuka	5L	1.2m
	<i>Kunzea ericoides</i>	kānuka	5L	1.2m
	<i>Leptospermum scoparium</i>	manuka	5L	1.2m
	<i>Myrsine australis</i>	māpou	5L	1.2m
	<i>Phormium cookianum</i>	wharariki	5L	1.2m
	<i>Pittosporum crassifolium</i>	karo	5L	1.2m
	<i>Knightia excelsa</i>	rewarewa	5L	1.2m
	<i>Sophora microphylla</i>	kōwhai	5L	1.2m

Hardscape Surfaces	
Standard concrete - Pedestrian & Vehicular	Standard concrete, 4kg black oxide per m3, broom finish
Exposed aggregate concrete - Vehicular	Standard concrete with Firth Mountain Burst' aggregate, exposed aggregate finish
Hoggin Limestone	Hoggin Limestone Gap 6
Bark mulch	Cambium bark mulch
Lawn	PGG Wrightson DuraVeg® Berm Mix Sowing Rate: 30-50g/m2
Asphalt	By others

LEGEND

- Boundary Scope of Work
- Specimen Trees w/ Bark Mulch
- Lawn
- Rain Gardens
- Standard Concrete
- Asphalt
- Hoggin Limestone
- Street Light (w/8m radial exclusion zone)

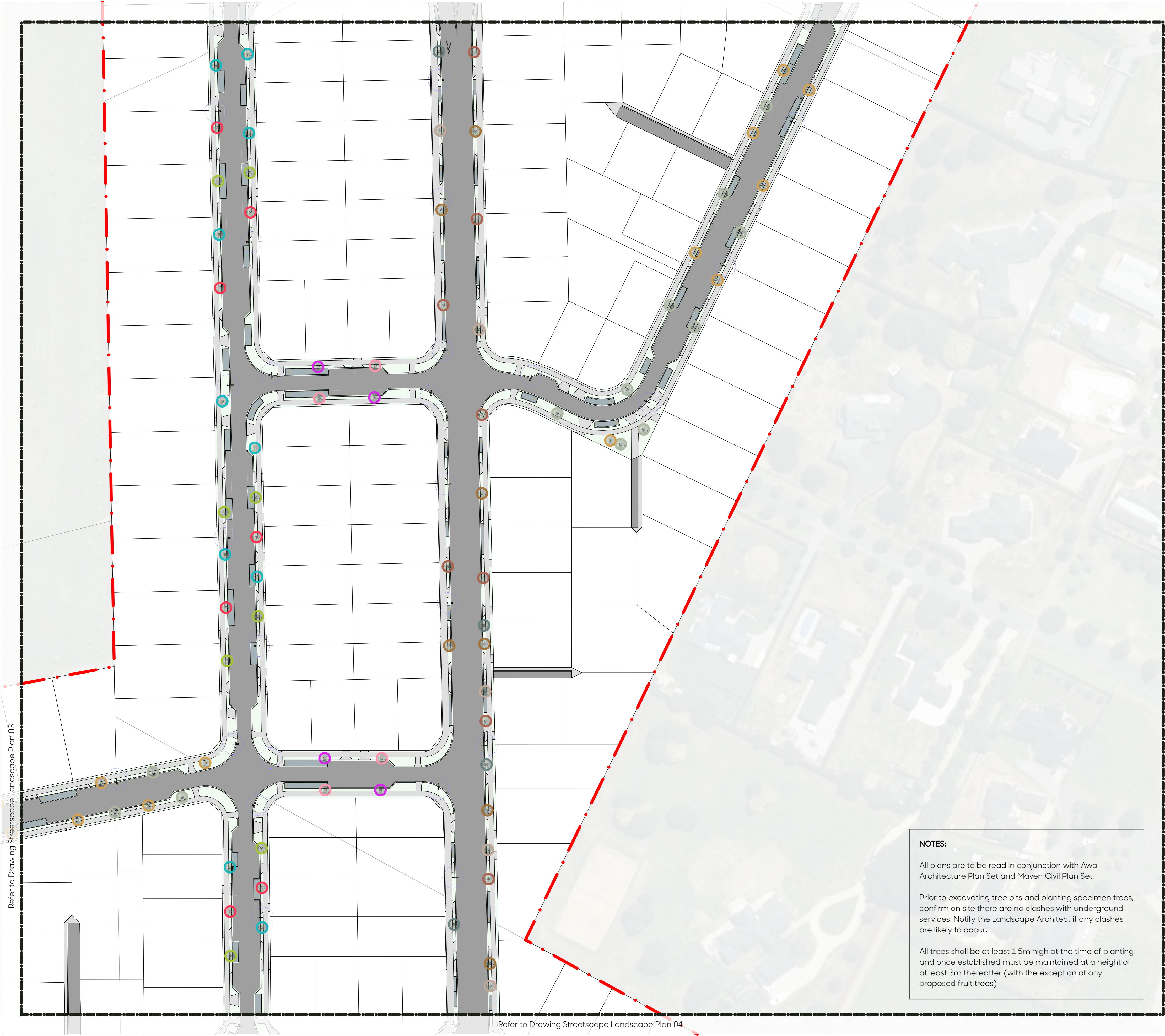


SHEET LOCATION PLAN - NTS

SPECIMEN TREES



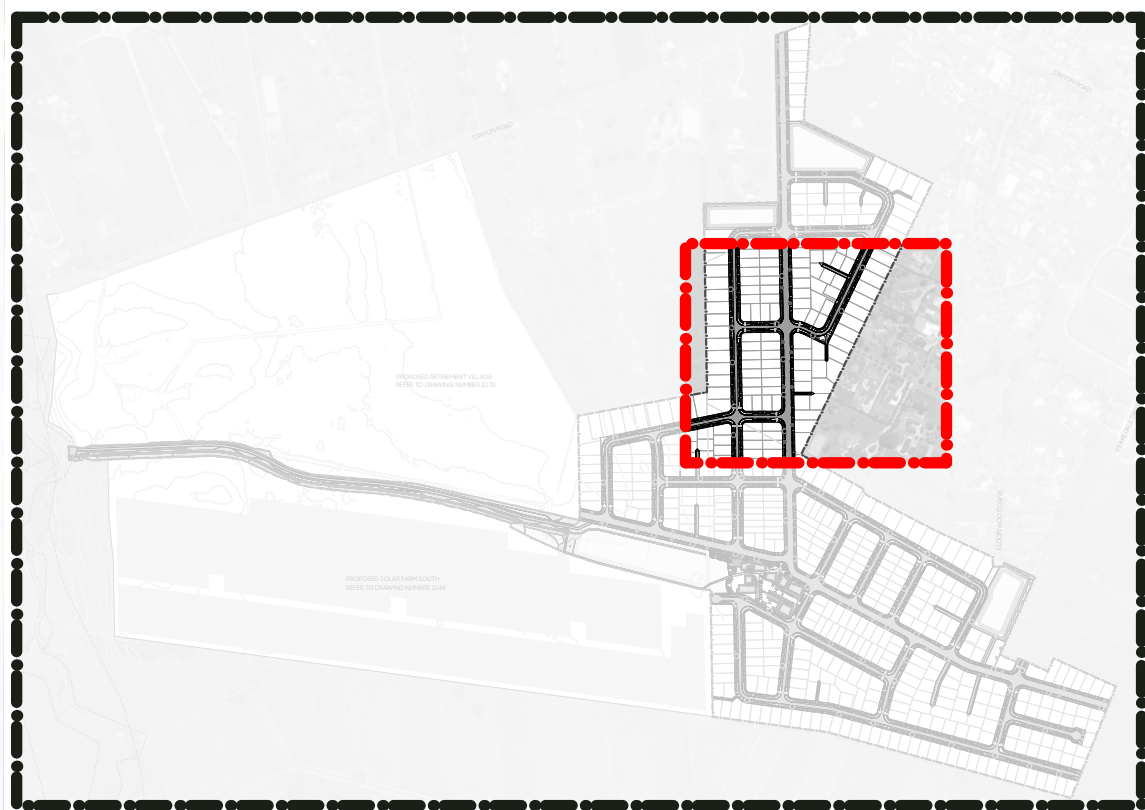




Code	Botanical Name	Common Name	Grade	Spacing
Specimen Trees - Streets				
●	<i>Acer palmatum</i>	Japanese maple	45L	Marked
●	<i>Alectryon excelsus</i>	titoki	45L	Marked
●	<i>Carpinus betulus 'Fastigiata'</i>	upright hornbeam	45L	Marked
●	<i>Halleria papulnea</i>	houhere	45L	Marked
●	<i>Knightia excelsa</i>	rewarewa	45L	Marked
●	<i>Phyllocladus trichomanoides</i>	tānekaha	45L	Marked
●	<i>Plagianthus regius</i>	manatu	45L	Marked
●	<i>Prumnopitys ferruginea</i>	miro	45L	Marked
●	<i>Lagerstroemia indica</i>	crepe myrtle	45L	Marked
●	<i>Quercus rubra</i>	red oak	45L	Marked
●	<i>Saphora microphylla</i>	kōwhai	45L	Marked
●	<i>Vitex lucens</i>	pūriri	45L	Marked
RGM Rain Garden Planting Mix				
	<i>Apodasmia similis</i>	lōiōi	2L	0.75m
	<i>Blechnum novae-zelandiae</i>	kiokio	2L	0.75m
	<i>Carex secta</i>	pūrei	2L	0.75m
	<i>Coprosma acerosa</i>	sand Coprosma	2L	0.75m
	<i>Corokia cotoneaster</i>	korokio	2L	0.75m
	<i>Dianella nigra</i>	turutu	2L	0.75m
	<i>Muehlenbeckia complexa</i>	pohuehue	2L	0.75m
	<i>Phormium cookianum</i>	wharariki	2L	0.75m
	<i>Pseudopanax crassifolius</i>	horoeoka	10L	1m
AP Amenty Planting Mix				
	<i>Coprosma 'Hawera'</i>	groundcover Coprosma	2L	1m
	<i>Dianella nigra</i>	turutu	2L	1m
	<i>Hebe 'Wiri Mist'</i>	shrubby Veronica	2L	1m
	<i>Phormium cookianum</i>	wharariki	2L	1m
Hardscape Surfaces				
	Standard concrete - Pedestrain & Vehicular	Standard concrete, 4kg black oxide per m3, broom finish		
	Exposed aggregate concrete - Vehicular	Standard concrete with Firth 'Mountain Burst' aggregate, exposed aggregate finish		
	Hoggin Limestone	Hoggin Limestone Gap 6		
	Bark mulch	Cambium bark mulch		
	Lawn	PGG Wrightson DuraVeg® Berm Mix		
	Asphalt	Sowing Rate: 30-50g/m2		
		By others		

LEGEND

- Boundary Scope of Work
- SpecimenTrees w/ Bark Mulch
- Lawn
- Rain Gardens
- Standard Concrete
- Asphalt
- Hoggin Limestone
- Street Light (w/8m radial exclusion zone)

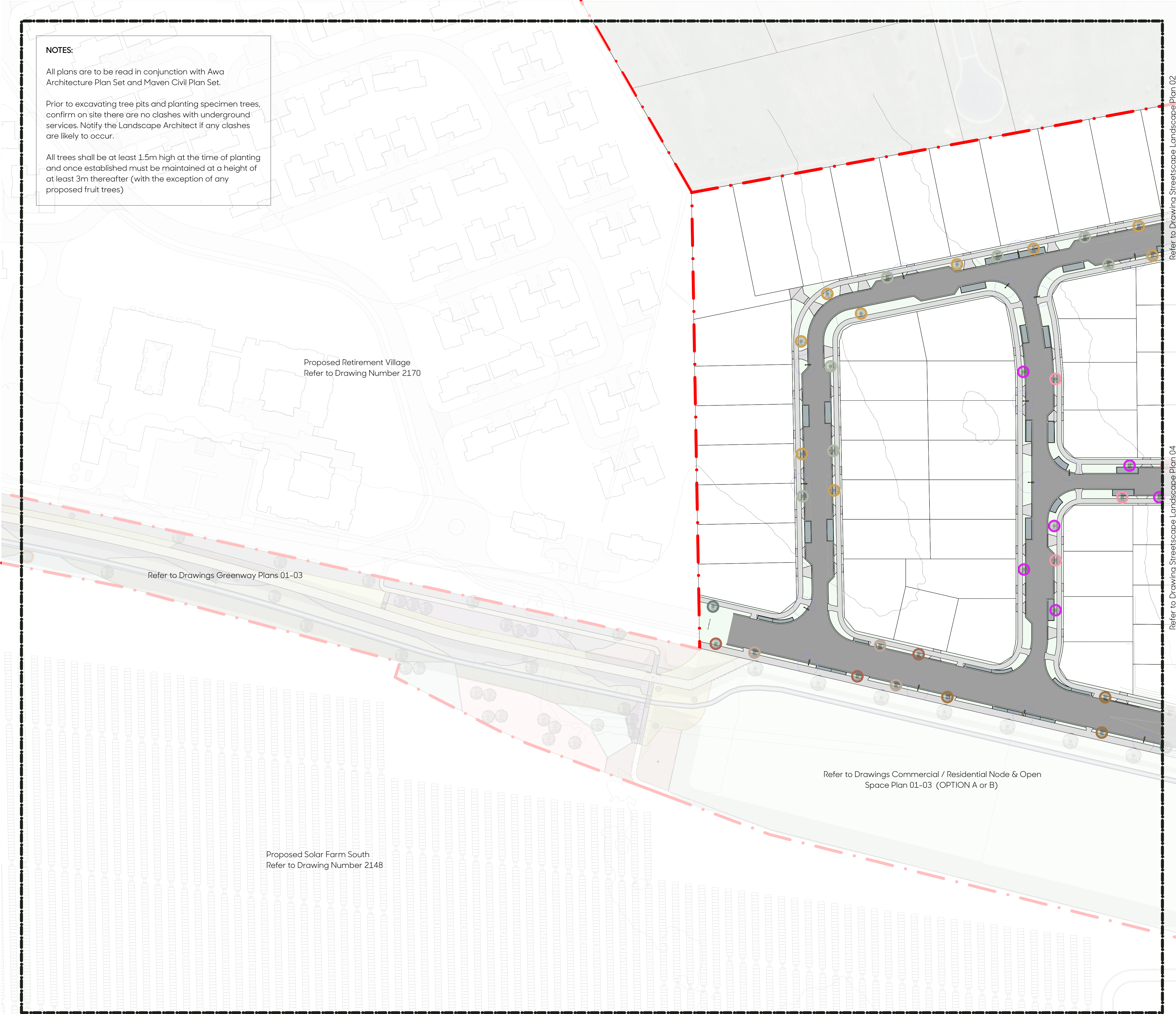


SHEET LOCATION PLAN - NTS

SPECIMEN TREES







**NOTES:**

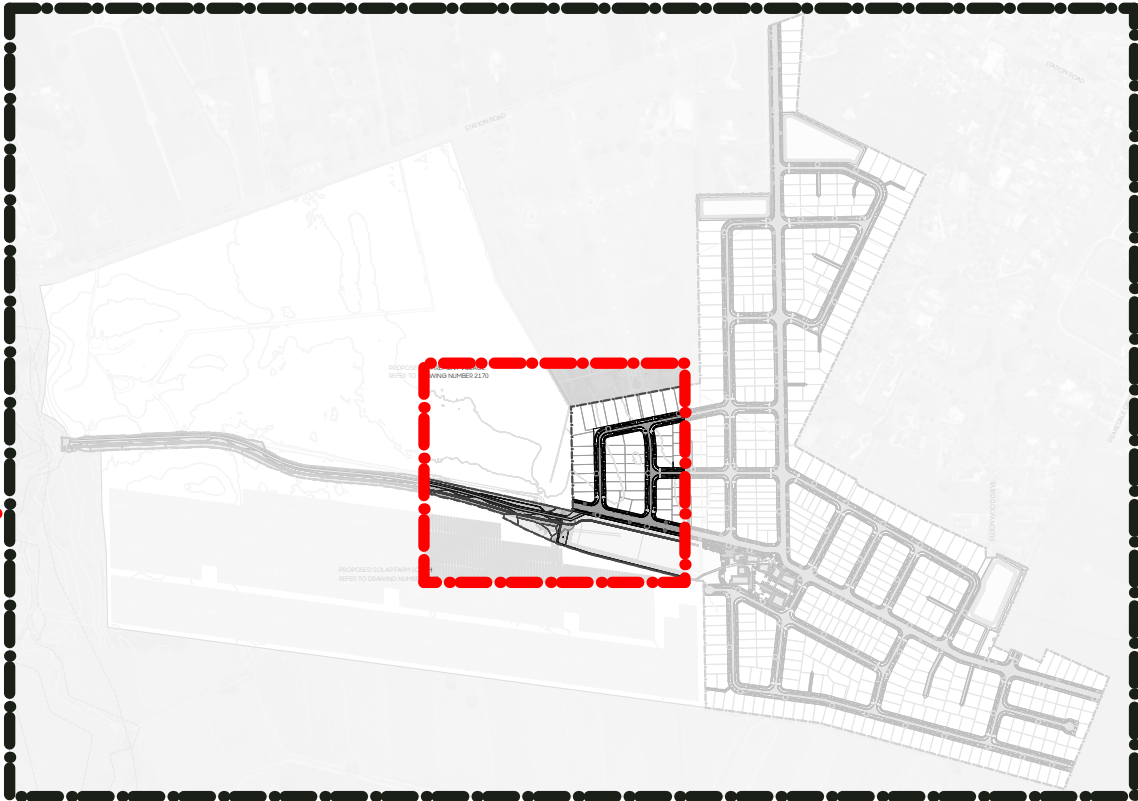
All plans are to be read in conjunction with Awa Architecture Plan Set and Maven Civil Plan Set.

Prior to excavating tree pits and planting specimen trees, confirm on site there are no clashes with underground services. Notify the Landscape Architect if any clashes are likely to occur.

All trees shall be at least 1.5m high at the time of planting and once established must be maintained at a height of at least 3m thereafter (with the exception of any proposed fruit trees)

Code	Botanical Name	Common Name	Grade	Spacing
Specimen Trees - Streets				
1	<i>Acer palmatum</i>	Japanese maple	45L	Marked
2	<i>Alectryon excelsus</i>	titoki	45L	Marked
3	<i>Carpinus betulus 'Fastigiata'</i>	upright hornbeam	45L	Marked
4	<i>Hoheria populnea</i>	houhere	45L	Marked
5	<i>Knightia excelsa</i>	rewarewa	45L	Marked
6	<i>Phyllocladus trichomanoides</i>	tānekaha	45L	Marked
7	<i>Plagianthus regius</i>	manatu	45L	Marked
8	<i>Prumnopitys ferruginea</i>	miro	45L	Marked
9	<i>Lagerstroemia indica</i>	crepe myrtle	45L	Marked
10	<i>Quercus rubra</i>	red oak	45L	Marked
11	<i>Sophora microphylla</i>	kōwhai	45L	Marked
12	<i>Vitex lucens</i>	pūriri	45L	Marked
RGM Rain Garden Planting Mix				
	<i>Apodasmia similis</i>	oloi	2L	0.75m
	<i>Blechnum novae-zelandiae</i>	kiokio	2L	0.75m
	<i>Carex secta</i>	pūrei	2L	0.75m
	<i>Caprosma acerosa</i>	sand Caprosma	2L	0.75m
	<i>Corokia cotoneaster</i>	korokio	2L	0.75m
	<i>Dianella nigra</i>	turutu	2L	0.75m
	<i>Muehlenbeckia complexa</i>	pohuehue	2L	0.75m
	<i>Phormium cookianum</i>	wharariki	2L	0.75m
	<i>Pseudopanax crassifolius</i>	horoeke	10L	1m
AP Amenity Planting Mix				
	<i>Caprosma 'Hawera'</i>	groundcover Caprosma	2L	1m
	<i>Dianella nigra</i>	turutu	2L	1m
	<i>Hebe 'Wiri Mist'</i>	shrubby Veronica	2L	1m
	<i>Phormium cookianum</i>	wharariki	2L	1m
Hardscape Surfaces				
	Standard concrete - Pedestrian & Vehicular	Standard concrete, 4kg black oxide per m3, broom finish		
	Exposed aggregate concrete - Vehicular	Standard concrete with Firth 'Mountain Burst' aggregate, exposed aggregate finish		
	Hoggin Limestone	Hoggin Limestone Gap 6		
	Bark mulch	Cambium bark mulch		
	Lawn	PGG Wrightson DuraVeg® Berm Mix		
	Asphalt	Sowing Rate: 30-50g/m2		
		By others		

- LEGEND**
- Boundary Scope of Work
  - Specimen Trees w/ Bark Mulch
  - Lawn
  - Rain Gardens
  - Standard Concrete
  - Asphalt
  - Hoggin Limestone
  - Street Light (w/8m radial exclusion zone)



SHEET LOCATION PLAN - NTS

SPECIMEN TREES

