







Legend

- 1. Vacant lot residential subdivision in stages for approximately 1,500 dwellings
- 2. Future neighbourhood centre
- 3. Future MoE School site
- 4. Required infrastructure within the Pokeno West site including, new roads, water supply network, stormwater management devices and network
- 5. Reserve areas and recreational trails
- 6. Local parks and play opportunities
- 7. Enhancement of streams, wetlands and steep slopes

General:

Local wastewater infrastructure and any bulk "main" to connect to wider solution. An interim "local" solution may also be required





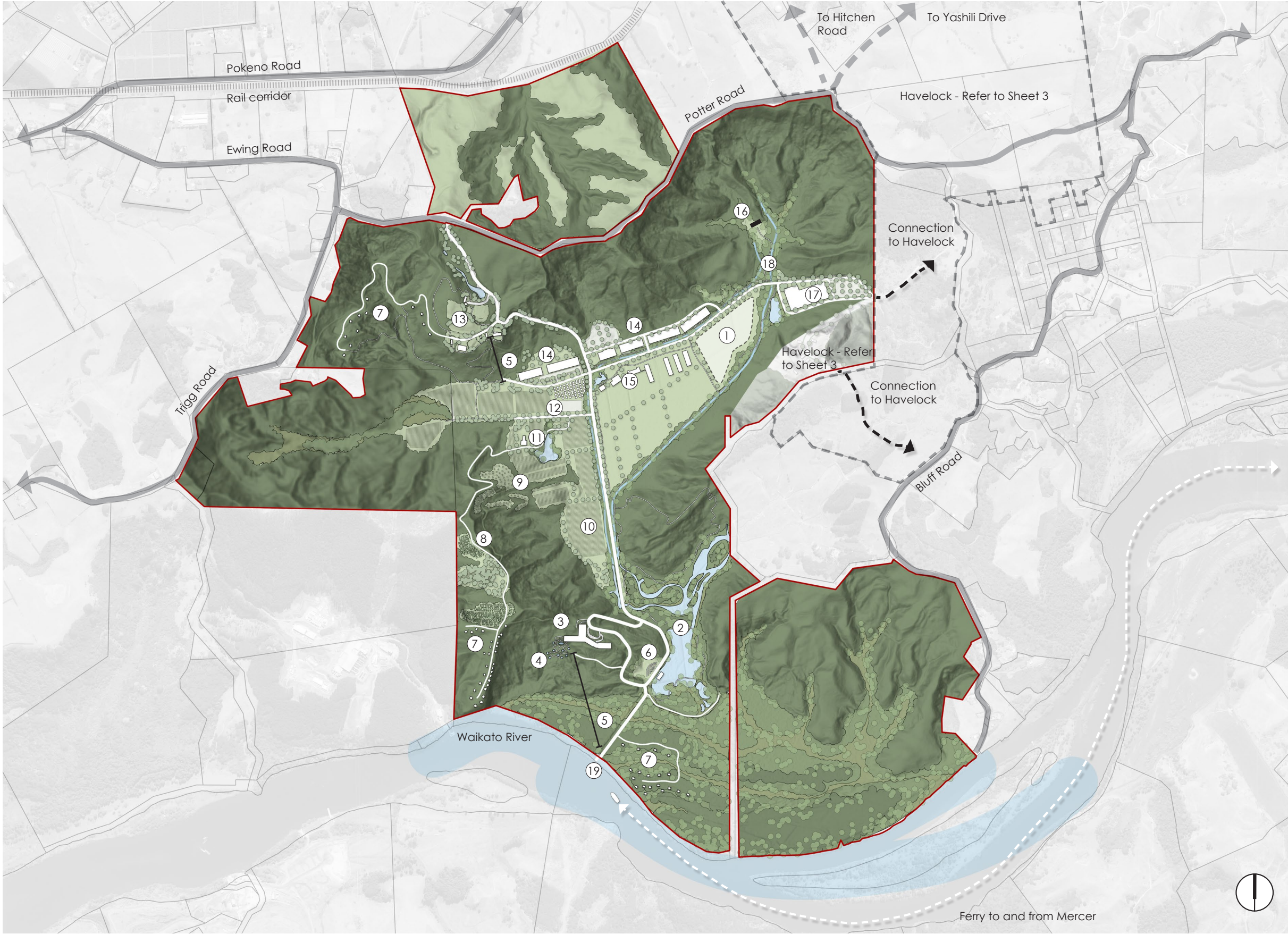
## Legend

1. Vacant lot residential subdivision in stages for approximately 750 dwellings
2. Vacant lot slope residential subdivision
3. Vacant lot rural residential "cluster-style" subdivision
4. Required infrastructure within the Havelock site including, new roads, water supply network, stormwater management devices and network
5. Reserve areas and recreational trails
6. Local parks and play opportunities
7. Enhancement of ecological areas, streams, wetlands and steep slopes
8. Ridgeline plantings
9. General industrial zone

## General:

Local wastewater infrastructure and any bulk "main" to connect to wider solution. An interim "local" solution may also be required  
(d) enhancement of mapped ecological areas, streams and wetlands





Legend

- 1. Central MBR location
- 2. Wetland
- 3. Hotel site
- 4. Hotel outdoor spa and garden facilities
- 5. Zipline
- 6. Amphitheater and stage for performances
- 7. Glamping
- 8. Orchards
- 9. Tea tree plantations
- 10. Vineyards, berries, edible gardens and lavender fields
- 11. Wedding venue setting and amenities
- 12. Plant nursery and glasshouses
- 13. Petting zoo and animal engagement facilities
- 14. Large sheds and car parking
- 15. Cafe, sheds and animal show facilities
- 16. Large swing facility
- 17. Large shed and car parking
- 18. Stream, wetland and steep slope planting enhancements
- 19. Boat ferry facility

General:

Local wastewater infrastructure and any bulk "main" to connect to wider solution. An interim "local" solution may also be required