

WIAL SOUTHERN SEAWALL RENEWAL APPENDIX 5 - GRAPHIC SUPPLEMENT

SECTION 2: LANDSCAPE CONCEPT PLANS

16.03.2026



CONTENTS

FIGURE 22: OVERALL SITE PLAN

MOA POINT YARD

FIGURE 23: OVERALL LANDSCAPE CONCEPT PLAN

FIGURE 24: REHABILITATION AREA - LANDSCAPE CONCEPT PLAN

FIGURE 25: STAGE 2 KORORĀ COLONY - LANDSCAPE CONCEPT PLAN

FIGURE 26: MOA POINT YARD - SECTION

FIGURE 27: REHABILITATION AREA & REINSTATED YARD - MATERIALS PALETTE

FIGURE 28: STAGE 2 KORORĀ COLONY - MATERIALS PALETTE

FIGURE 29: REHABILITATION AREA & REINSTATED YARD - PLANTING PALETTE

FIGURE 30: STAGE 2 KORORĀ COLONY - PLANTING PALETTE

STAGE 1 KORORĀ COLONY

FIGURE 31: STAGE 1 KORORĀ COLONY - LANDSCAPE CONCEPT PLAN

FIGURE 32: STAGE 1 KORORĀ COLONY - SECTION

FIGURE 33: STAGE 1 KORORĀ COLONY - MATERIALS PALETTE

FIGURE 34: STAGE 1 KORORĀ COLONY - PLANTING PALETTE

MGC YARD

FIGURE 35: MGC YARD - LANDSCAPE CONCEPT PLAN

FIGURE 36: MGC YARD - MATERIALS PALETTE

FIGURE 37: MGC YARD - MITIGATION PLANTING PALETTE



Boffa Miskell is proudly a
Toitū carbonzero® consultancy

DOCUMENT QUALITY ASSURANCE

BIBLIOGRAPHIC REFERENCE FOR CITATION:

Boffa Miskell, 2025. *BOFFA MISKELL | WIAL SOUTHERN SEAWALL RENEWAL*

Prepared for Wellington International Airport Ltd.

PREPARED BY: Thomas Guthrie
Landscape Architect / Senior Professional
Boffa Miskell Ltd

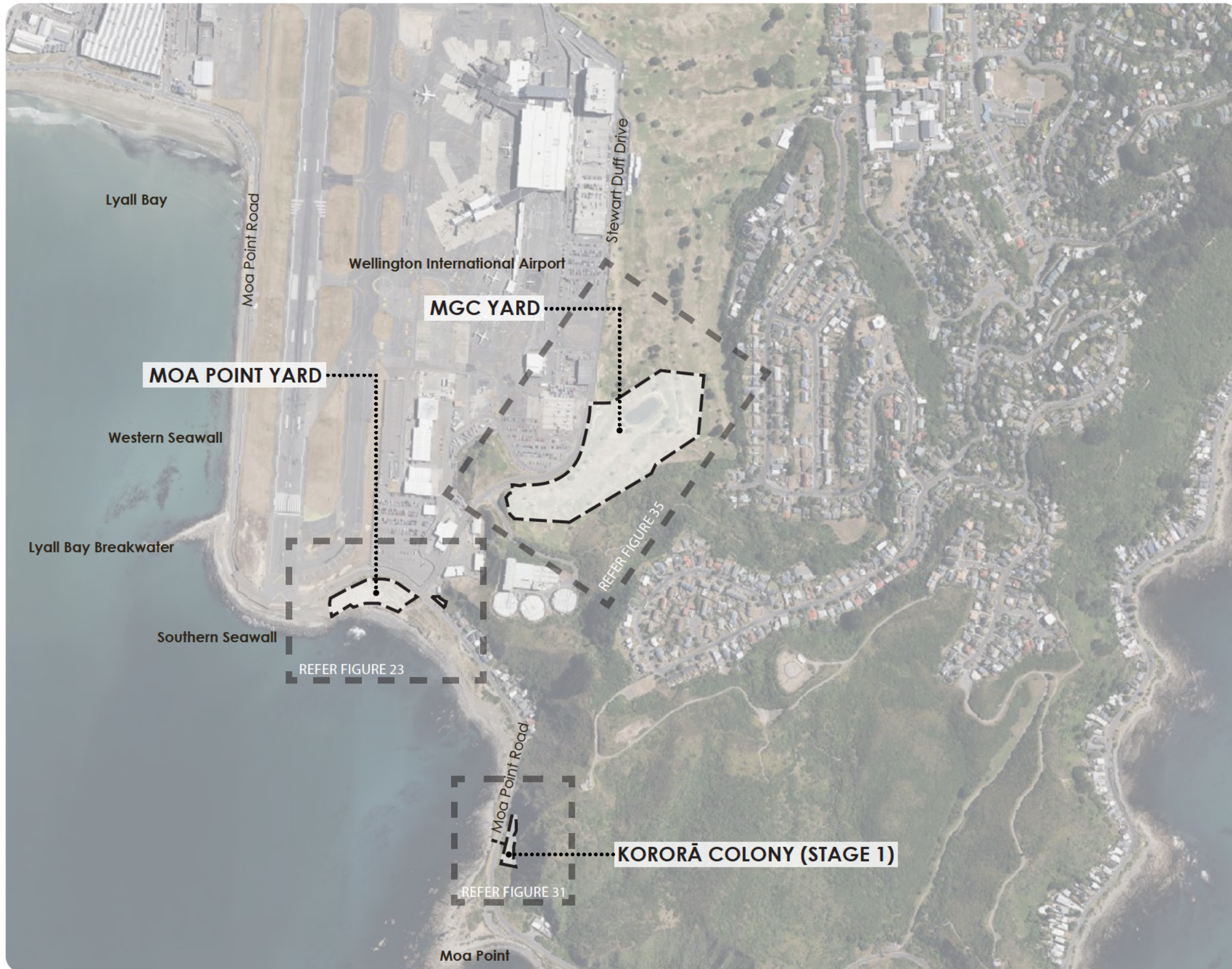
REVIEWED BY: Liz Gavin
Landscape Architect / Senior Principal
Boffa Miskell Ltd

STATUS: FOR CONSENT Revision / version: 01

Issue date: 16 March, 2026

WIAL SOUTHERN SEAWALL RENEWAL PROJECT

OVERALL SITE PLAN

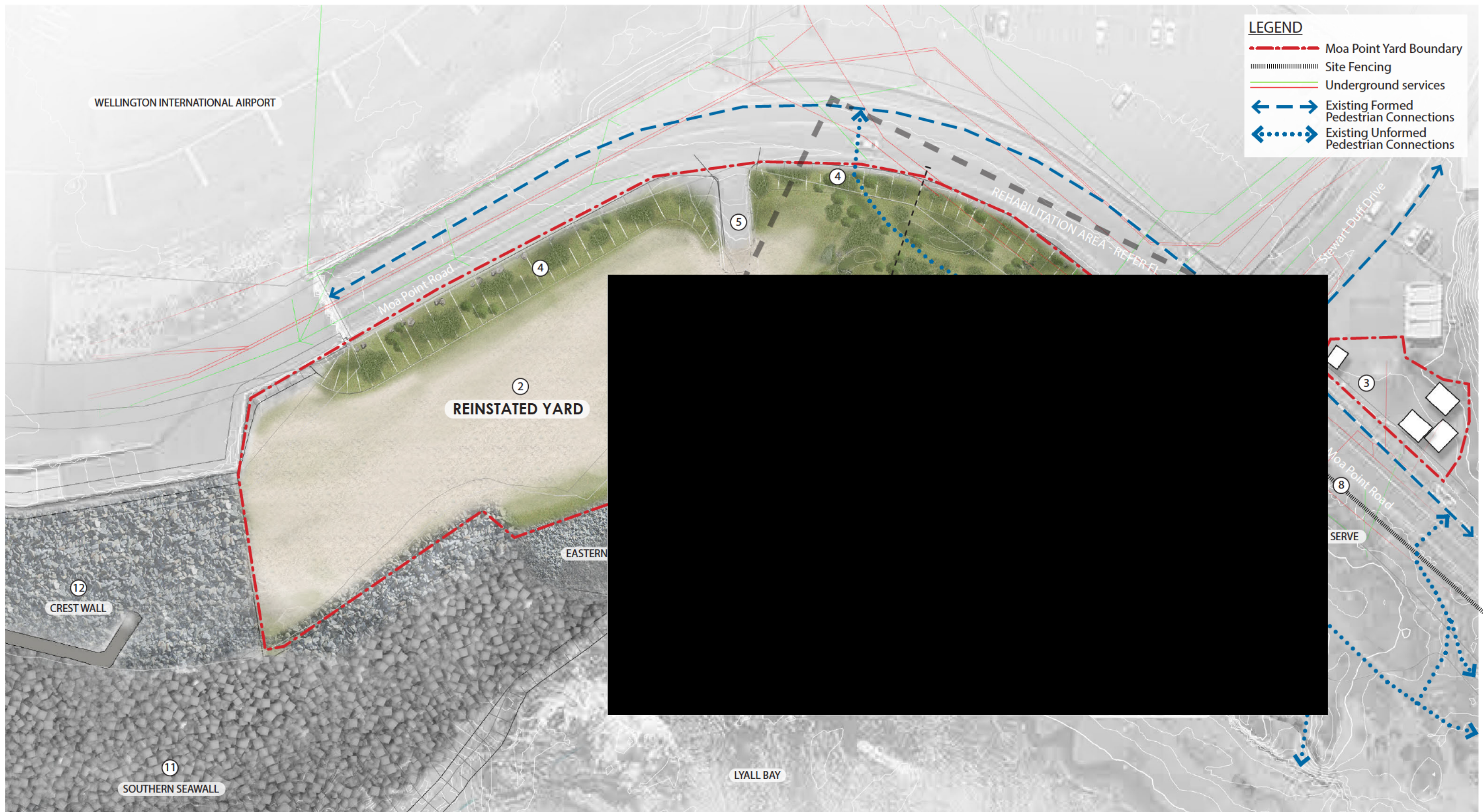


SITE PLAN
Scale: NTS



WIAL SOUTHERN SEAWALL RENEWAL PROJECT - MOA POINT YARD:

OVERALL LANDSCAPE CONCEPT PLAN



MOA POINT YARD

- ① Rehabilitation area - to be formed at completion of yard use
- ② Reinstated yard
- ③ Office buildings and site amenities with worker carparking
- ④ Planted sloped batter from road up to elevated level. Large rocks placed next to road edge to prevent cars parking with existing low timber post and rail fence removed
- ⑤ Site access with new gate
- ⑥ Stage 2 kororā colony - colony to be formed at completion of yard use
- ⑦ Stage 2 kororā colony perimeter fence
- ⑧ Existing low timber post and rail fence removed

SOUTHERN SEAWALL

- ⑩ Eastern bank remediation rock armour
- ⑪ Southern seawall
- ⑫ Crest wall

WIAL SOUTHERN SEAWALL RENEWAL PROJECT - MOA POINT YARD_REHABILITATION AREA:

LANDSCAPE CONCEPT PLAN



REHABILITATION AREA

- ① Undulating mounds to recreate natural landform
- ② Planted sloped batter from road up to elevated level. Large rocks placed next to road edge to prevent cars parking with existing low timber post and rail fence removed
- ③ Rehabilitation Area Planting
- ④ Pedestrian entrance/exit via existing reserve pathway
- ⑤ Compacted gravel path loop trail to join on existing reserve pathway
- ⑥ Rock piles and driftwood logs to recreate natural landscape
- ⑦ Seating
- ⑧ Cultural interpretation panel
- ⑨ Wayfinding signage
- ⑩ Stage 2 kororā colony perimeter fence



LANDSCAPE CONCEPT PLAN

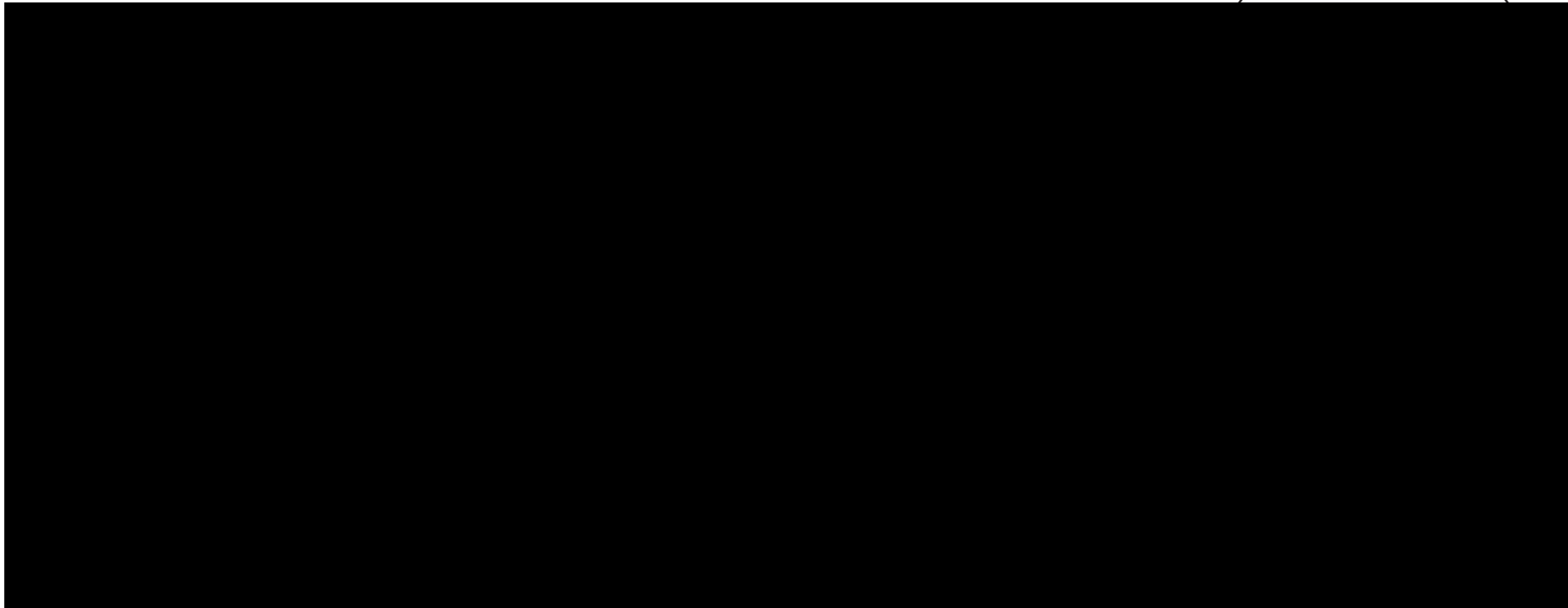


STAGE 2 KORORA COLONY

- ① Earth mounds 1 = 1-1.2m high, 4m wide (approx)
- ② Earth mounds 2 = 1.5m high, 5m wide
- ③ Earth mounds 3 = 1.8-2m high, 5m wide
- ④ Kororā colony plants
- ⑤ Kororā colony perimeter fence - 1.5m high
- ⑥ Pedestrian gate in fence - 1.5-2m wide
- ⑦ Indicative nestboxes - approx 60 in total
- ⑧ Kororā path - concrete channels through revetment wall with openings inbetween
- ⑨ Hand placed rocks besides gravel paths
- ⑩ Up to 300 mm wide gravel pathways to guide kororā to nestboxes
- ⑪ Eastern bank remediation rock armour
- ⑫ Existing cobble beach
- ⑬ Subsoil pipes to allow for stormwater flows through



SECTION



SECTION A - MOA POINT RD YARD AND EASTERN BANK REMEDIATION

REHABILITATION AREA

- ① Existing low timber post and rail fence removed
- ② Planted sloped batter from road up to elevated level. Large rocks placed next to road edge to prevent cars parking
- ③ Undulating mounds to replicate topography of adjacent reserve
- ④ Rehabilitation Area plants
- ⑤ Rock piles and driftwood logs to recreate natural landscape
- ⑥ Seating Area 1 - 2x seats, interpretation panel. Views out to runway

STAGE 2 KORORA COLONY

- ⑦ Earth mounds 1 = 1-1.2m high, 4m wide (approx)
- ⑧ Earth mounds 2 = 1.5m high, 5m wide
- ⑨ Earth mounds 3 = 1.8-2m high, 5m wide
- ⑩ Kororā colony plants
- ⑪ Kororā colony perimeter fence - 1.5m high

EASTERN BANK

- ⑫ Indicative nestboxes - approx 60 in total
- ⑬ Kororā path - concrete channels through revetment wall with openings inbetween
- ⑭ Hand placed rocks besides gravel paths
- ⑮ Eastern bank remediation rock armour
- ⑯ Existing cobble beach

WIAL SOUTHERN SEAWALL RENEWAL PROJECT - MOA POINT YARD_REHABILITATION AREA & REINSTATED YARD:

File Ref: BM230853_260316_Landscape Concept Plans_SECTION 2.indd

MATERIALS PALETTE



COMPACTED AGGREGATE/GRAVEL PATHS

Informal 1.2m wide compacted gravel paths to tie into existing pathways in adjacent reserve.



ROCK PILES

Placement of rocks to recreate natural landscape.



DRIFTWOOD LOGS

Placement of driftwood logs to recreate natural landscape.



SEATING

Seating to be discussed further with WCC.



CULTURAL INTERPRETATIONAL PANELS

To be discussed further with WCC.



WAYFINDING SIGNAGE

To be discussed further with WCC.



SITE ACCESS GATE

New site access gate into Reinstated Yard to be replaced.

MATERIALS PALETTE



KORORĀ PATHWAYS

Up to 300mm wide gravel pathways to guide kororā to nestboxes. Placement of large rocks to provide shelter from wind and to attract kororā. Smaller rocks placed around large rocks to provide lizard habitat.



NESTBOXES

Nestboxes will be placed in newly planted areas. Rock and driftwood placement to be covered and secure entry.



DRIFTWOOD LOGS

Piles of driftwood to provide cover for kororā alongside paths and around nestboxes.



PERIMETER FENCING

1.5 m high waratah and deer mesh style fencing with aperture approximately 100 x 150 mm.

WIAL SOUTHERN SEAWALL RENEWAL PROJECT - MOA POINT YARD_REHABILITATION AREA & REINSTATED YARD:

PLANTING PALETTE

GRASSES/LOW SHRUBS:

- PLANTS TO BE A MIX OF THE FOLLOWING LIST BELOW, PLANTED AT 0.5-1.5m SPACINGS FOR SHRUBS WITH 1L OR RT SHRUB GRADE SOURCED LOCALLY.

| | | | | | | | |
|---|---|---|---|---|---|---|-------------------------|
|  |  |  |  |  |  |  | |
| Common Name | Mountain Flax/Wharariki | Sand Sedge | Sand Coprosma | Taupata | Mingimingi | Wīwī | Broad-leaved Poa |
| Latin Name | <i>Phormium cookianum subsp. hookeri</i> | <i>Carex pumila</i> | <i>Coprosma acerosa</i> 'Red Rocks' | <i>Coprosma repens</i> | <i>Coprosma propinqua</i> var. <i>propinqua</i> | <i>Ficinia nodosa</i> | <i>Poa anceps</i> |
| % | tbc% | tbc% | tbc% | tbc% | tbc% | tbc% | tbc% |
| Notes | Spread out and plant in clumps of 2-4 | | | | Clustered | Clustered | |

GROUNDCOVERS:

- PLANTS TO BE A MIX OF THE FOLLOWING LIST BELOW, PLANTED AT 0.5-1.5m SPACINGS WITH 1L OR RT GRADE SOURCED LOCALLY.

| | | | | | | |
|---|---|---|---|---|---|--------------------------|
|  |  |  |  |  |  | |
| Common Name | Scabweed | NZ Daphne | Selliera | Shore Bindweed | Pohuehue | Horokaka |
| Latin Name | <i>Raoulia hookeri</i> subsp. <i>hookeri</i> . | <i>Pimelea prostrata</i> | <i>Goodenia radicans</i> | <i>Calystegia soldanella</i> | <i>Muehlenbeckia complexa</i> var. <i>complexa</i> | <i>Disphyma australe</i> |
| % | tbc% | tbc% | tbc% | tbc% | tbc% | tbc% |
| Notes | Clustered | Clustered | Clustered. Plant in damp areas such as depressions | Clustered. Plant in damp areas such as depressions | Clustered | Clustered |

PLANTING PALETTE

PRIMARY SPECIES:



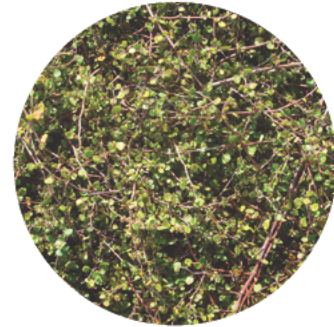
Taupata

Coprosma repens



Mingimingi

Coprosma propinqua var. *propinqua*



Pohuehue

Muehlenbeckia complexa var. *complexa*



Mountain Flax/Wharariki

Phormium cookianum subsp. *hookeri*

SECONDARY SPECIES:



Tauhinu

Ozothamnus leptophyllus



Flax/Harakeke

Phormium tenax



Coastal Tree Daisy

Olearia solandri



Thick Leaved Māhoe

Meliccytus crassifolius



Wīwī

Ficinia nodosa



Twiggy Coprosma

Coprosma rhamnoides



Silver Tussock

Poa cita

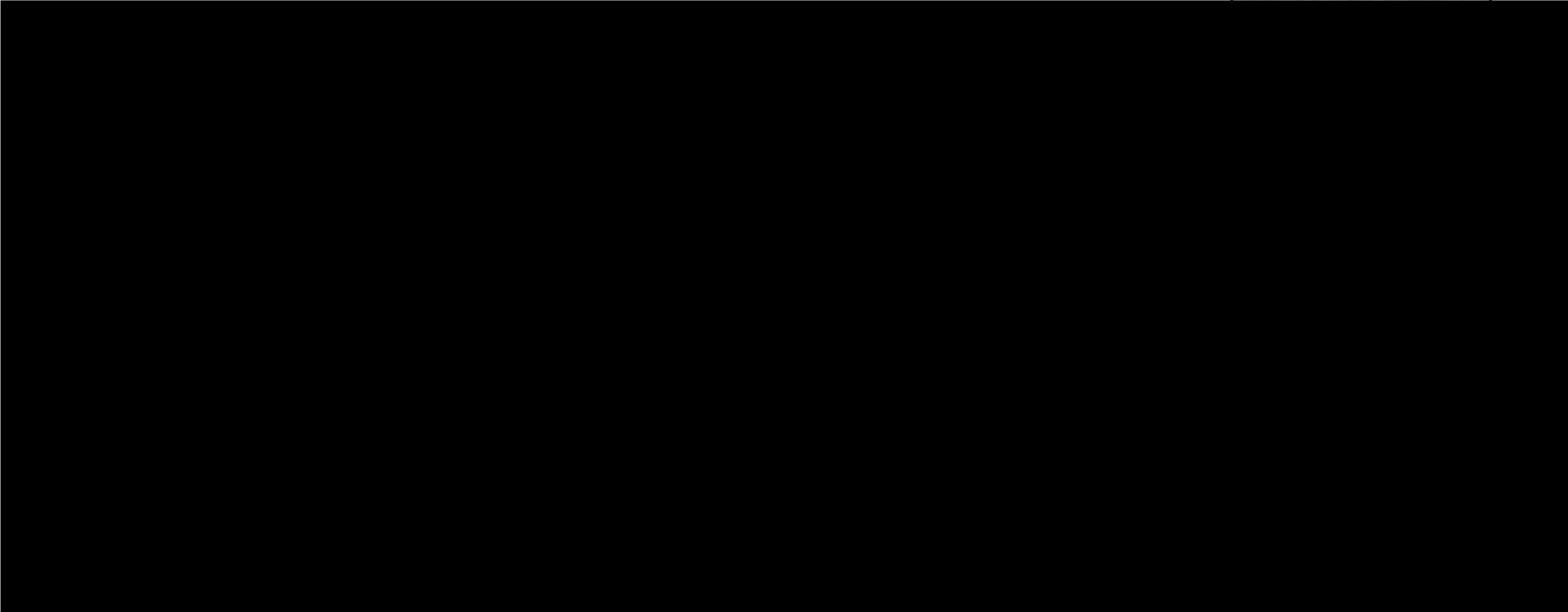
LANDSCAPE CONCEPT PLAN



STAGE 1 KORORĀ COLONY

- ① Rocks from local area to be placed along shoreline at bottom of bank to enhance habitat
- ② Large rocks (1-2+m) from local area to limit access of people
- ③ Screen planting - Phormium Tenax
- ④ Shoreline fence - temporary fence until screen planting establishes itself
- ⑤ Underpass with small embedded rocks in the base and wingwalls - refer Beca plans for details
- ⑥ Roadside bollards - replace removed bollards to match existing
- ⑦ Kororā colony perimeter fence
- ⑧ Pedestrian gate in fence - 1.5-2m wide
- ⑨ Indicative nestboxes - 100 in total with a further 100 more could be accommodated in to the future
- ⑩ Hand placed rocks besides gravel paths
- ⑪ Stage 1 Kororā colony plants
- ⑫ Up to 300 mm wide gravel pathways to guide kororā to nestboxes
- ⑬ Regrassed area with informal footpath created naturally by pedestrians

SECTION



SECTION A - KORORĀ COLONY STAGE 1

STAGE 1 KORORĀ COLONY

- ① Rocks from local area to be placed along shoreline at bottom of bank to enhance habitat
- ② Large rocks (1-2+m) from local area to limit access of people
- ③ Screen planting - Phormium Tenax
- ④ Shoreline fence - temporary fence until screen planting establishes itself
- ⑤ Underpass with small embedded rocks in the base and wingwalls - refer Beca plans for details
- ⑥ Roadside bollards - replace removed bollards to match existing
- ⑦ Kororā colony perimeter fence
- ⑧ Hand placed rocks besides gravel paths
- ⑨ Indicative nestboxes - 100 in total with a further 100 more could be accommodated in to the future
- ⑩ Concrete apron and wingwalls embedded with rocks
- ⑪ Grassed slope
- ⑫ Stage 1 Kororā Colony Plants

MATERIALS PALETTE



SHORELINE FENCE

1m high waratah and deer mesh style fencing with aperture approximately 100 x 150mm.



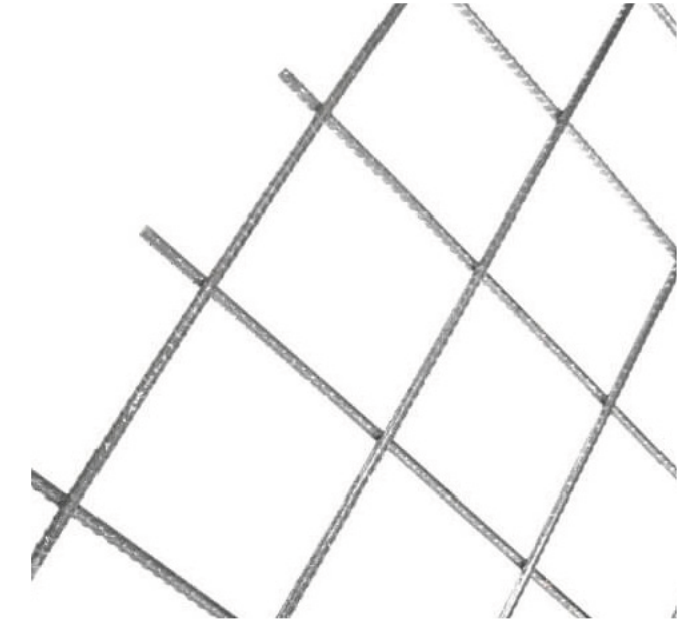
ROADSIDE BOLLARDS

Replace removed bollards to match existing.



PERIMETER FENCING

1.5 m high waratah and deer mesh style fencing with aperture approximately 100 x 150 mm. Lower 300mm of fence to be 12mm x 12mm welded steel mesh to prevent entrapment of kororā and to guide them to portal.



PORTAL MESH

Placed over culvert portal to enable access for kororā while preventing access by others.



KORORĀ PATHWAYS

Up to 300mm wide gravel pathways to guide kororā to nestboxes. Placement of large rocks to provide shelter from wind and to attract kororā. Smaller rocks placed around large rocks to provide lizard habitat.



NEST BOXES

Placement of nestboxes will be placed under existing vegetation and in newly planted areas. Hand clearance of exotic vegetation only. Rock and driftwood placement to be covered and secure entry.



DRIFTWOOD LOGS

Piles of driftwood to provide cover for kororā alongside paths and around nestboxes.

PLANTING PALETTE

PRIMARY SPECIES:



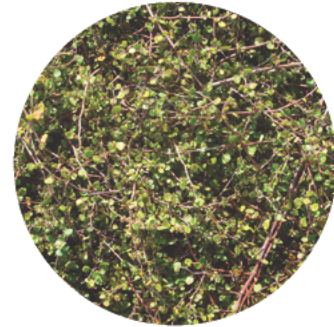
Taupata

Coprosma repens



Mingimingi

Coprosma propinqua var. *propinqua*



Pohuehue

Muehlenbeckia complexa var. *complexa*



Mountain Flax/Wharariki

Phormium cookianum subsp. *hookeri*

SECONDARY SPECIES:



Tree Hebe

Veronica parviflora



Flax/Harakeke

Phormium tenax



Coastal Tree Daisy

Olearia solandri



Thick Leaved Māhoe

Meliclytus crassifolius



Tauhinu

Ozothamnus leptophyllus



Wīwī

Ficinia nodosa



Twiggy Coprosma

Coprosma rhamnoides



Broad-leaved Poa

Poa anceps



NZ Spinach

Tetragonia trigyna



Native Wheatgrass

Anthosachne solandri



Sand Tussock

Poa billardierei

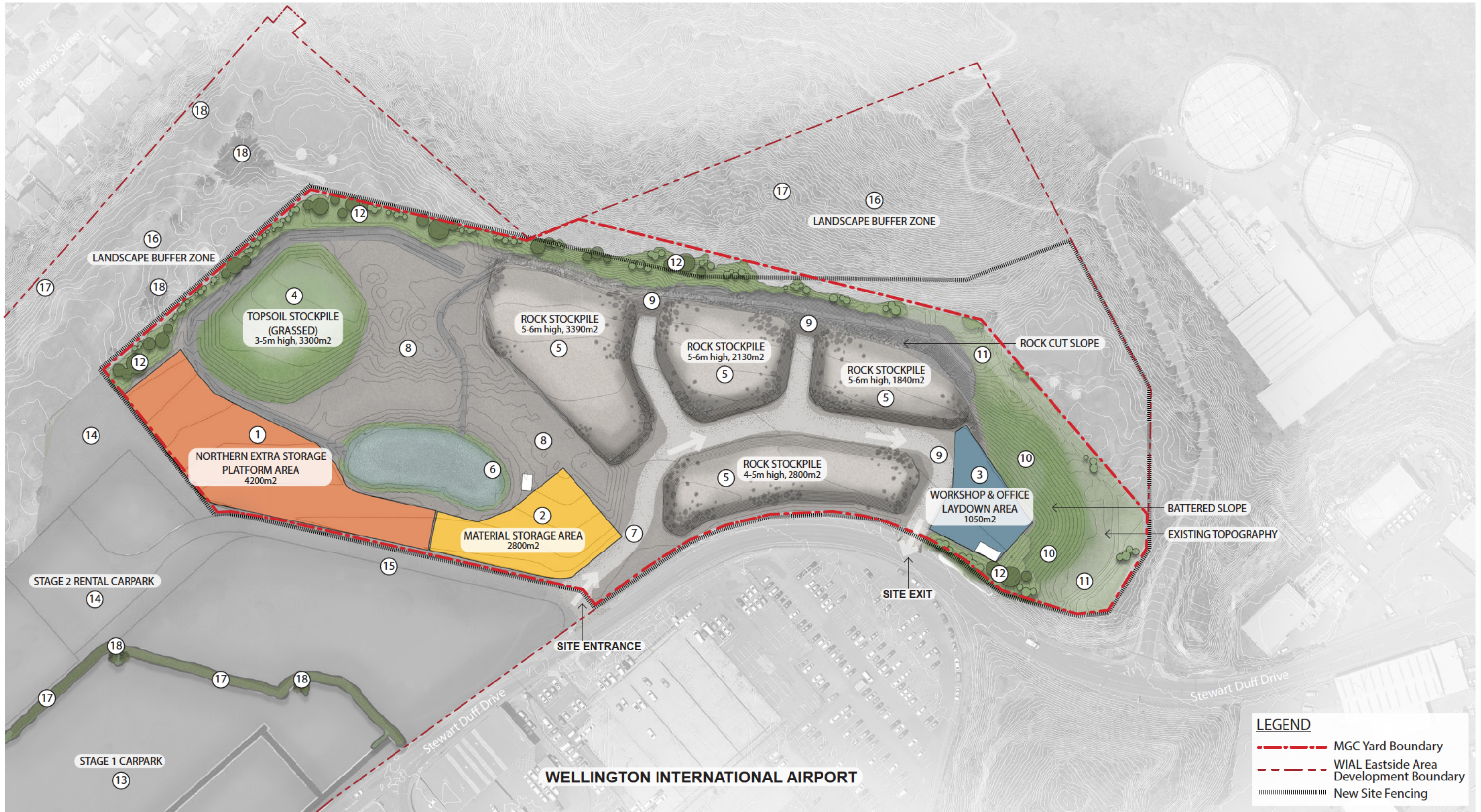


Sea Holly

Eryngium undulatum

WIAL SOUTHERN SEAWALL RENEWAL PROJECT - MGC YARD:

LANDSCAPE CONCEPT PLAN



MGC YARD

- ① Northern extra storage platform area
- ② Material storage area
- ③ Workshop & office laydown area
- ④ Topsoil stockpile
- ⑤ Rock stockpile
- ⑥ Existing stormwater pond and shed/ablutions building
- ⑦ Access road (hardfill)
- ⑧ Site yard / laydown yard (metal)
- ⑨ Rock cut slope
- ⑩ Soft cut slope (grassed)

MGC YARD MITIGATION TREATMENT

- ⑪ Grass
- ⑫ Mass planted grasses/small shrubs & pockets of small trees

EASTSIDE AREA DEVELOPMENT

- ⑬ Stage 1 carpark
- ⑭ Stage 2 rental carpark
- ⑮ Stage 2 rental carpark area access road
- ⑯ Landscape buffer zone
- ⑰ Existing vegetation (low)
- ⑱ Existing trees

MGC Yard - Landscape Concept Plan

Scale 1:1500@A3 | Date: 16 March 2026 | Revision: 01
Plan prepared for Wellington International Airport Limited by Boffa Miskell Limited
Project Manager: Liz.Gavin@boffamiskell.co.nz | Drawn: TGu | Checked: LGA



Figure 35

MATERIALS PALETTE



CHAIN LINK FENCING

2-2.5 m high chain link fence to match existing

WIAL SOUTHERN SEAWALL RENEWAL PROJECT - MGC YARD:

MITIGATION PLANTING PALETTE

TREE SPECIES:

- TREES TO BE PLANTED AT 3m SPACINGS WITH PB18 SPECIMEN TREE GRADE.



Lancewood

Pseudopanax crassifolius



Cabbage Tree

Cordyline australis



Ngaio

Myoporum laetum



South Island Kowhai

Sophora microphylla

TALL SHRUBS/HEDGING SPECIES:

- PLANTS TO BE PLANTED AT 2m SPACINGS WITH RT SHRUB GRADE SOURCED LOCALLY.



Kanuka

Kunzea robusta



Taupata

Coprosma repens



Mapou

Myrsine australis



Akapuka

Griselinia lucida



Akiraho

Olearia paniculata

GRASSES/LOW SHRUBS:

- PLANTS TO BE PLANTED AT 0.5-1.5m SPACINGS WITH RT SHRUB GRADE SOURCED LOCALLY.



Mountain Flax

Phormium cookianum



Silver Tussock

Poa cita



Koromiko

Veronica stricta



Wiwi

Ficinia nodosa



Mingimingi

Coprosma propinqua



Mingimingi

Coprosma rhamnoides



Together. Shaping Better Places.

Boffa Miskell is a leading New Zealand environmental consultancy with nine offices throughout Aotearoa. We work with a wide range of local, international private and public sector clients in the areas of planning, urban design, landscape architecture, landscape planning, ecology, biosecurity, Te Hīhiri (cultural advisory), engagement, transport advisory, climate change, graphics and mapping. Over the past five decades we have built a reputation for creativity, professionalism, innovation and excellence by understanding each project's interconnections with the wider environmental, social, cultural and economic context.

www.boffamiskell.co.nz

| | | | | | | | | |
|------------------|-----------------|-----------------|-----------------|-------------------|---------------|---------------------|-------------------|----------------|
| Whangarei | Auckland | Hamilton | Tauranga | Wellington | Nelson | Christchurch | Queenstown | Dunedin |
| 09 358 2526 | 09 358 2526 | 07 960 0006 | 07 571 5511 | 04 385 9315 | 03 548 8551 | 03 366 8891 | 03 441 1670 | 03 470 0460 |