



0 100 200 300 400 500 m

Legend

-  Ecological Sites
-  WNDL Boundary

Notes:

1. Coordinates in NZGD2000 (Wellington Circuit) and NZVD2016.
2. Boundaries derived from LINZ DCDB and subject to final survey.
3. Planning overlays sourced from operative council GIS layers where applicable.
4. Plan information indicative and subject to change through plan updates or detailed survey.

Ecological Overlay Plan

Sites K060 & K066

Waikanae North Developments Ltd

Waikanae North

Peka Peka, Kapiti Coast

© Landlink Limited 2025



1 Ngaio Road, Waikanae 5036 + contactus@Landlink.nz

STAGE	ALL
REVISION	C
REVISION DETAILS	Issued For Consent

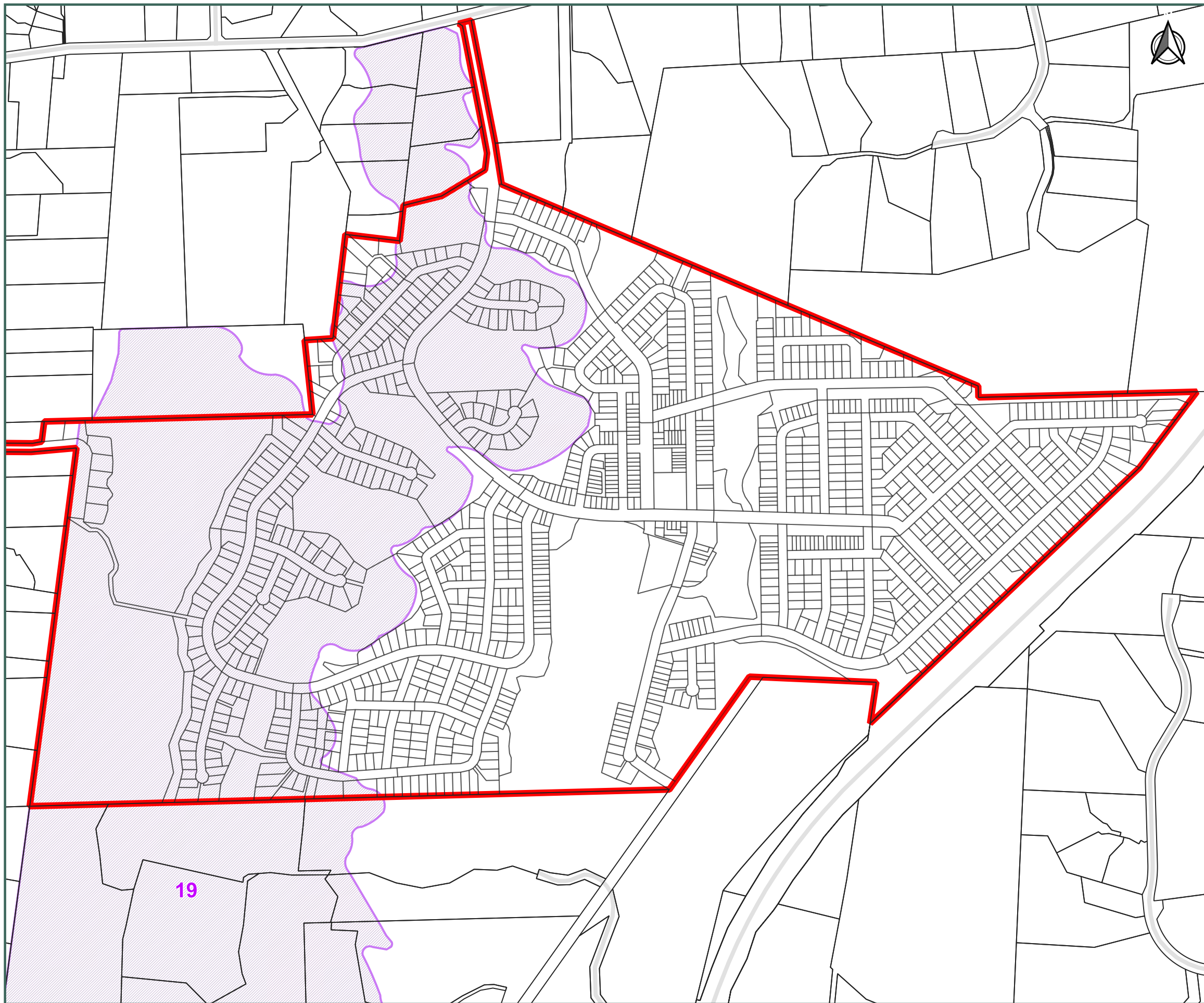
DESIGNED BY	JJH
DRAWN BY	JJH
APPROVED BY	PT

This drawing contains data from other sources and has been prepared for a specific site and event. Landlink Limited does not accept any liability for its accuracy, content or unauthorised use.

DATE 2026-03-13

SCALE Refer Scale Bar

2911-ALL-P-104



Legend

- WNDL Boundary
- Special Amenity Landscape

Notes:

1. Coordinates in NZGD2000 (Wellington Circuit) and NZVD2016.
2. Boundaries derived from LINZ DCDB and subject to final survey.
3. Planning overlays sourced from operative council GIS layers where applicable.
4. Plan information indicative and subject to change through plan updates or detailed survey.

Special Amenity Landscape Overlay Plan

Waikanae North Developments Ltd

Waikanae North

Peka Peka, Kapiti Coast

© Landlink Limited 2025



1 Ngaio Road, Waikanae 5036 + contactus@Landlink.nz

STAGE	ALL
REVISION	C
REVISION DETAILS	Issued For Consent

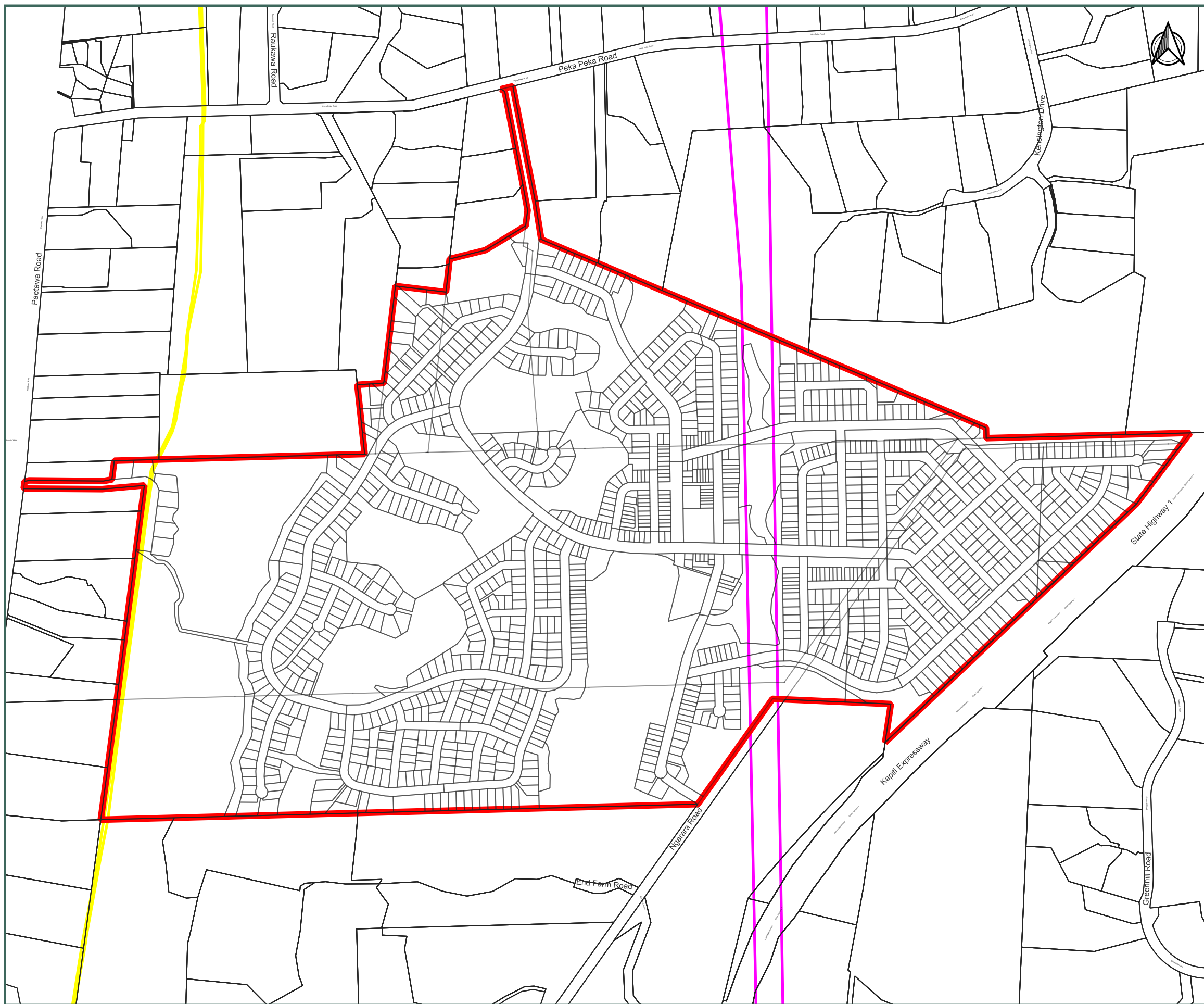
DESIGNED BY	JJH
DRAWN BY	JJH
APPROVED BY	PT

This drawing contains data from other sources and has been prepared for a specific site and event. Landlink Limited does not accept any liability for its accuracy, content or unauthorised use.

DATE 2026-03-13

SCALE Refer Scale Bar

2911-ALL-P-105



- Legend
- ▭ WNDL Boundary
 - Natural Gas
 - National Grid Lines

- Notes:
1. Coordinates in NZGD2000 (Wellington Circuit) and NZVD2016.
 2. Boundaries derived from LINZ DCDB and subject to final survey.
 3. Planning overlays sourced from operative council GIS layers where applicable.
 4. Plan information indicative and subject to change through plan updates or detailed survey.

National Grid and Gas Line Overlay Plan

Waikanae North Developments Ltd

Waikanae North
Peka Peka, Kapiti Coast

© Landlink Limited 2025



1 Ngaio Road, Waikanae 5036 + contactus@Landlink.nz

STAGE	ALL
REVISION	C
REVISION DETAILS	Issued For Consent

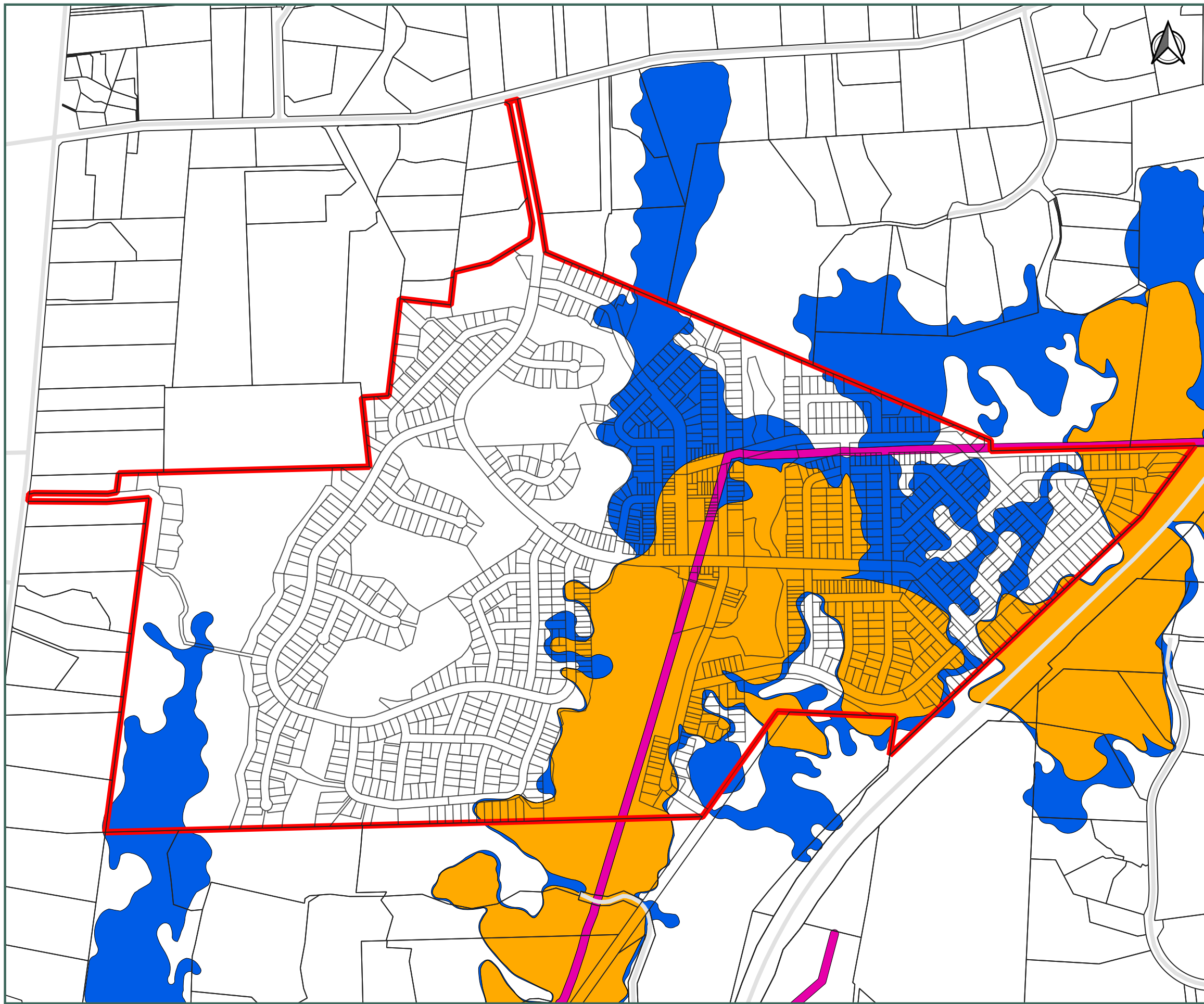
DESIGNED BY	JJH
DRAWN BY	JJH
APPROVED BY	PT

This drawing contains data from other sources and has been prepared for a specific site and event. Landlink Limited does not accept any liability for its accuracy, content or unauthorised use.

DATE 2026-03-13

SCALE Refer Scale Bar

2911-ALL-P-106



0 100 200 300 400 500 m

Legend

- WNDL Boundary
- Flood Hazard**
- Stream Corridor
- Flood Storage Area
- Ponding Area

- Notes:
1. Coordinates in NZGD2000 (Wellington Circuit) and NZVD2016.
 2. Boundaries derived from LINZ DCDB and subject to final survey.
 3. Planning overlays sourced from operative council GIS layers where applicable.
 4. Plan information indicative and subject to change through plan updates or detailed survey.

Flood Hazard Overlay Plan

Waikanae North Developments Ltd

Waikanae North
Peka Peka, Kapiti Coast

© Landlink Limited 2025



1 Ngaio Road, Waikanae 5036 + contactus@Landlink.nz

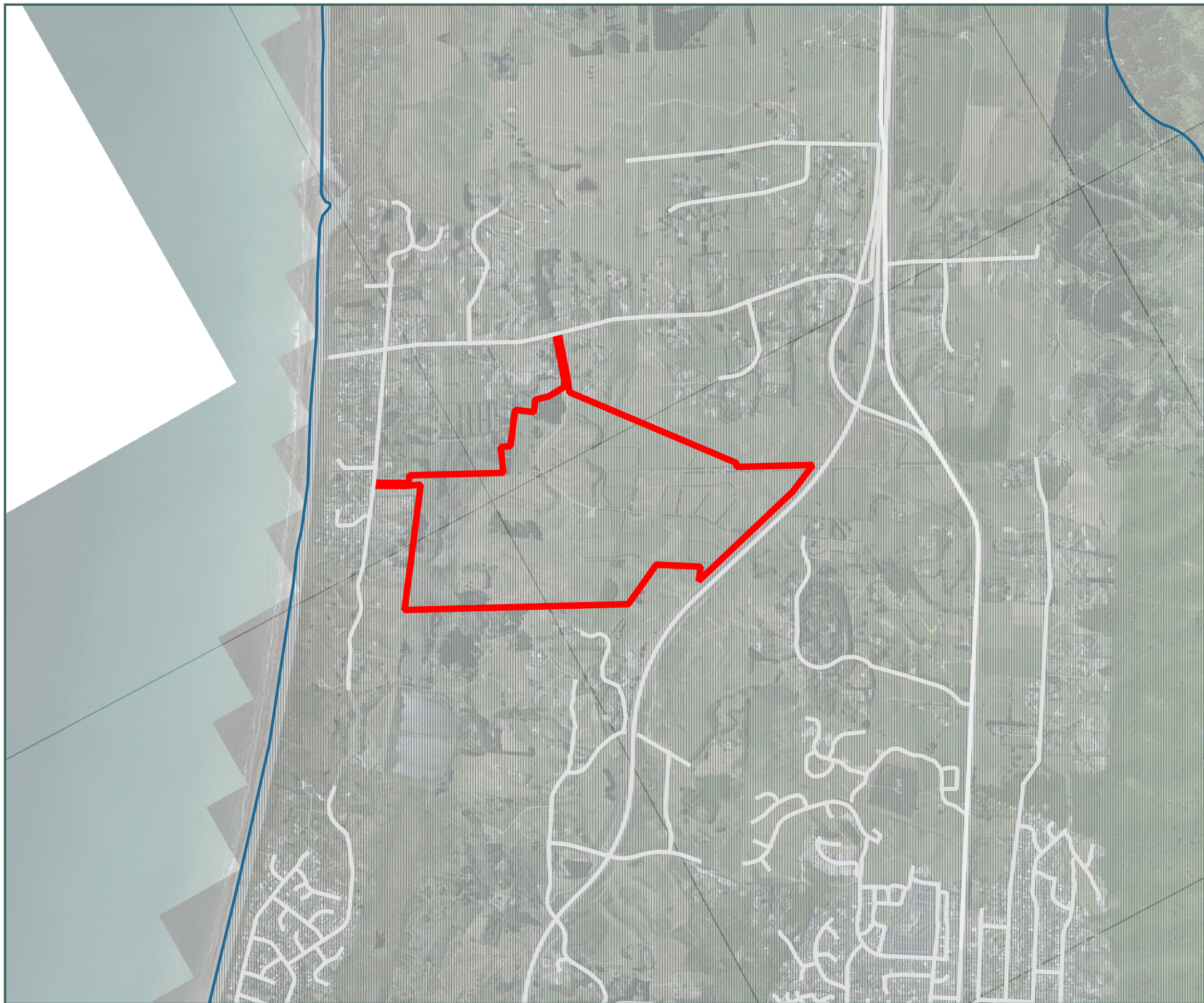
This drawing contains data from other sources and has been prepared for a specific site and event. Landlink Limited does not accept any liability for its accuracy, content or unauthorised use.

STAGE	ALL	DESIGNED BY	JJH
REVISION	C	DRAWN BY	JJH
REVISION DETAILS	Issued For Consent	APPROVED BY	PT

DATE 2026-03-13

SCALE Refer Scale Bar

2911-ALL-P-107



0 200 400 600 800 1,000 m

Legend

- WNDL Boundary
- Coastal Environment

Notes:

1. Coordinates in NZGD2000 (Wellington Circuit) and NZVD2016.
2. Boundaries derived from LINZ DCDB and subject to final survey.
3. Planning overlays sourced from operative council GIS layers where applicable.
4. Plan information indicative and subject to change through plan updates or detailed survey.

Coastal Environment Overlay Plan

Waikanae North Developments Ltd

Waikanae North
Peka Peka, Kapiti Coast

© Landlink Limited 2025



1 Ngaio Road, Waikanae 5036 + contactus@Landlink.nz

This drawing contains data from other sources and has been prepared for a specific site and event. Landlink Limited does not accept any liability for its accuracy, content or unauthorised use.

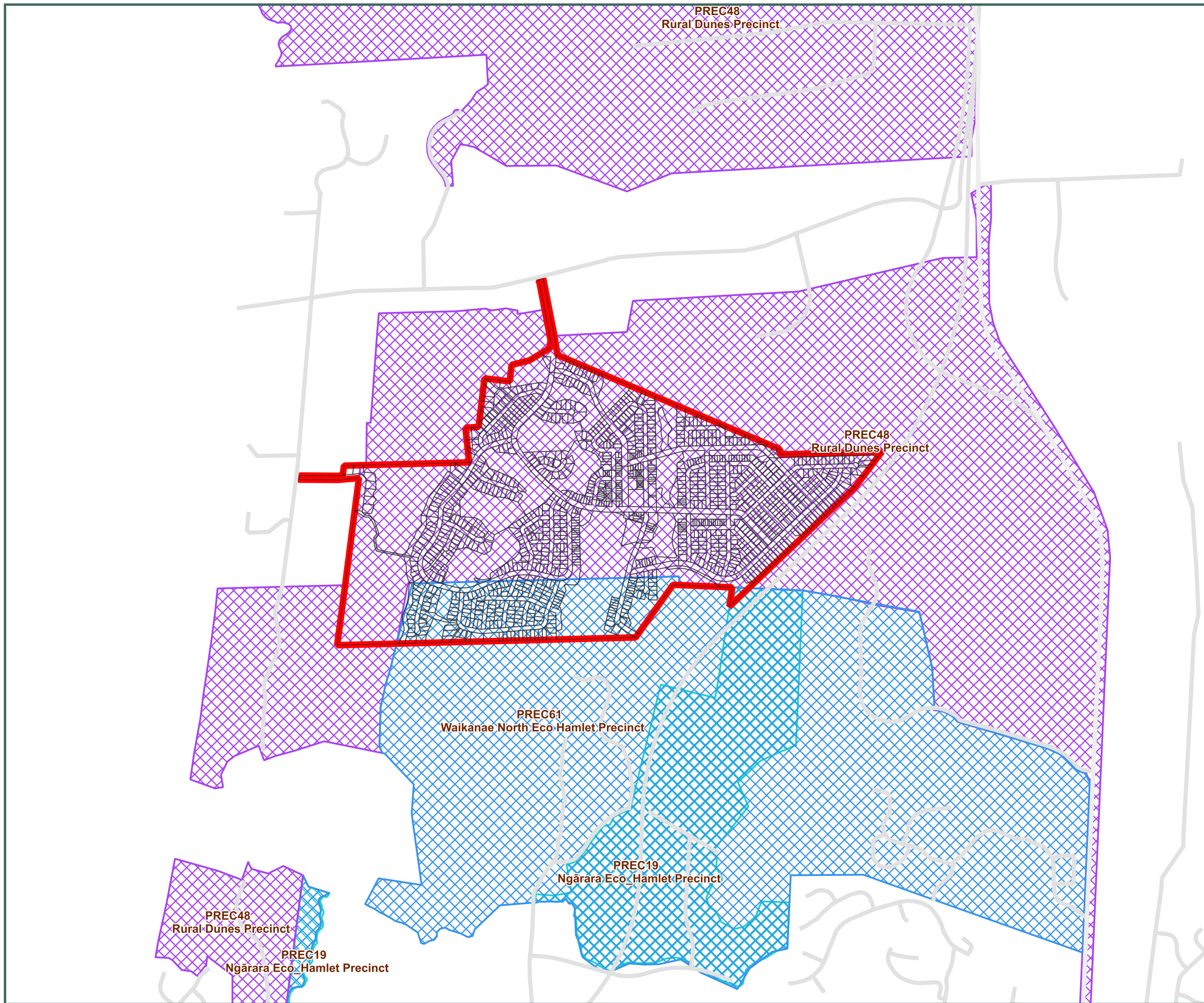
STAGE	ALL
REVISION	C
REVISION DETAILS	Issued For Consent

DESIGNED BY	JJH
DRAWN BY	JJH
APPROVED BY	PT

DATE 2026-03-13

SCALE Refer Scale Bar

2911-ALL-P-108



0 200 400 600 800 1,000 m



Legend

- WNDL Boundary
- Precincts
- PREC19 - Ngārara Eco_Hamlet Precinct
- PREC48 - Rural Dunes Precinct
- PREC61 - Waikanae North Eco Hamlet Precinct

Notes:

1. Coordinates in NZGD2000 (Wellington Circuit) and NZVD2016.
2. Boundaries derived from LINZ DCDB and subject to final survey.
3. Planning overlays sourced from operative council GIS layers where applicable.
4. Plan information indicative and subject to change through plan updates or detailed survey.

Precinct Overlay Plan

Areas 19, 48 and 61

Waikanae North Developments Ltd

Waikanae North

Peka Peka, Kapiti Coast

© Landlink Limited 2025



1 Ngaio Road, Waikanae 5036 + contactus@Landlink.nz

STAGE	ALL
REVISION	C
REVISION DETAILS	Issued For Consent

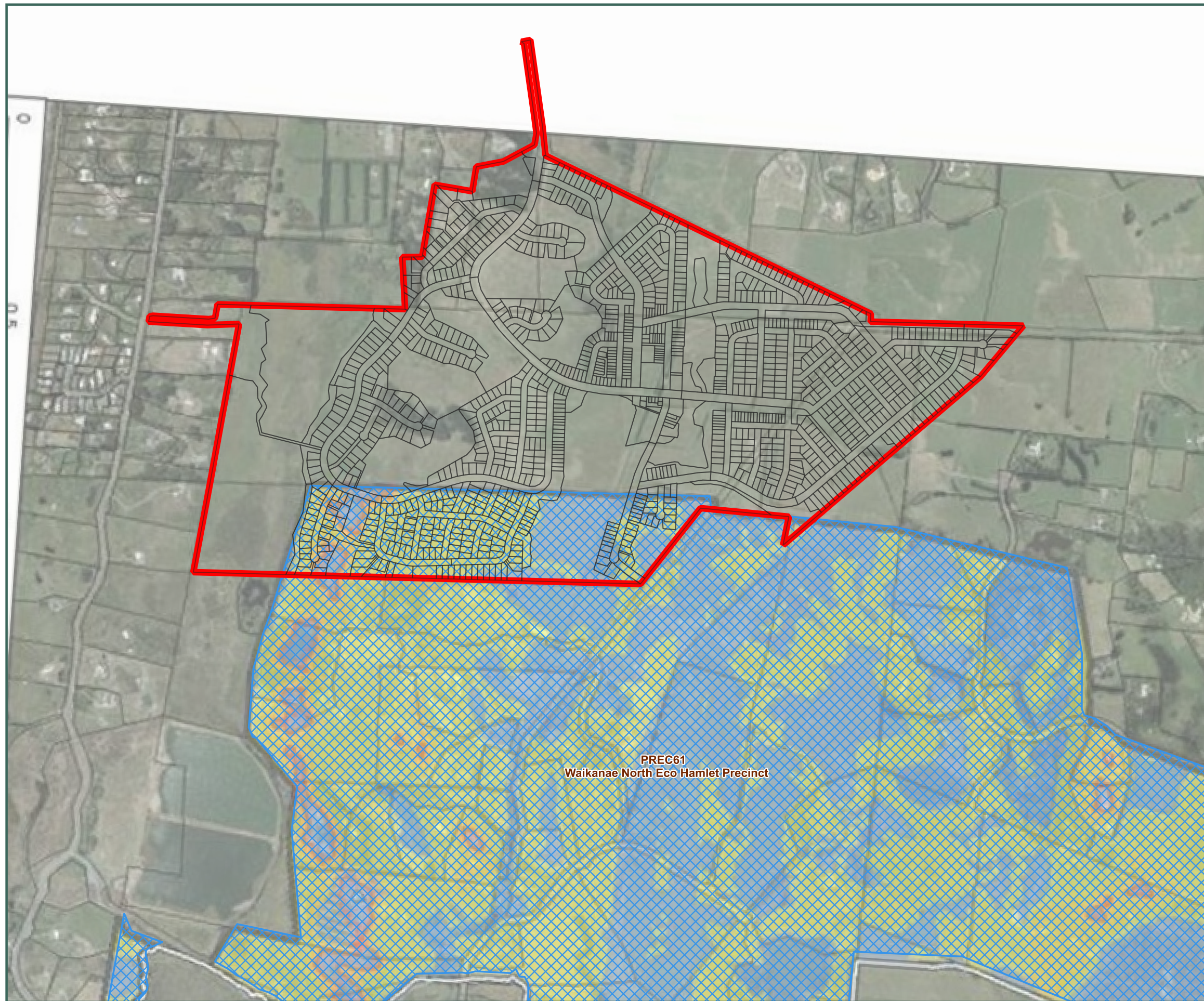
DESIGNED BY	JJH
DRAWN BY	JJH
APPROVED BY	PT

DATE 2026-03-13

SCALE Refer Scale Bar

2911-ALL-P-109

This drawing contains data from other sources and has been prepared for a specific site and event. Landlink Limited does not accept any liability for its accuracy, content or unauthorised use.



0 100 200 300 400 500 m



Legend

- WNDL Boundary
- PREC61 - Waikanae North Eco Hamlet Precinct
- Suitable Areas
- Less Suitable Areas
- Visually Sensitive Ridgelines
- Visually Sensitive Areas

Appendix 12 – Waikanae North eco-hamlet zone structure plan [PDF]

PREC61
Waikanae North Eco Hamlet Precinct

Notes:

1. Coordinates in NZGD2000 (Wellington Circuit) and NZVD2016.
2. Boundaries derived from LINZ DCDB and subject to final survey.
3. Planning overlays sourced from operative council GIS layers where applicable.
4. Plan information indicative and subject to change through plan updates or detailed survey.

Waikanae North Eco Hamlet Zone
Structure Plan – Georeferenced Overlay

Waikanae North Developments Ltd

Waikanae North
Peka Peka, Kapiti Coast

© Landlink Limited 2025



1 Ngaio Road, Waikanae 5036 + contactus@Landlink.nz

STAGE	ALL
REVISION	C
REVISION DETAILS	Issued For Consent

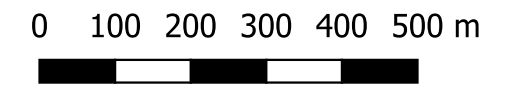
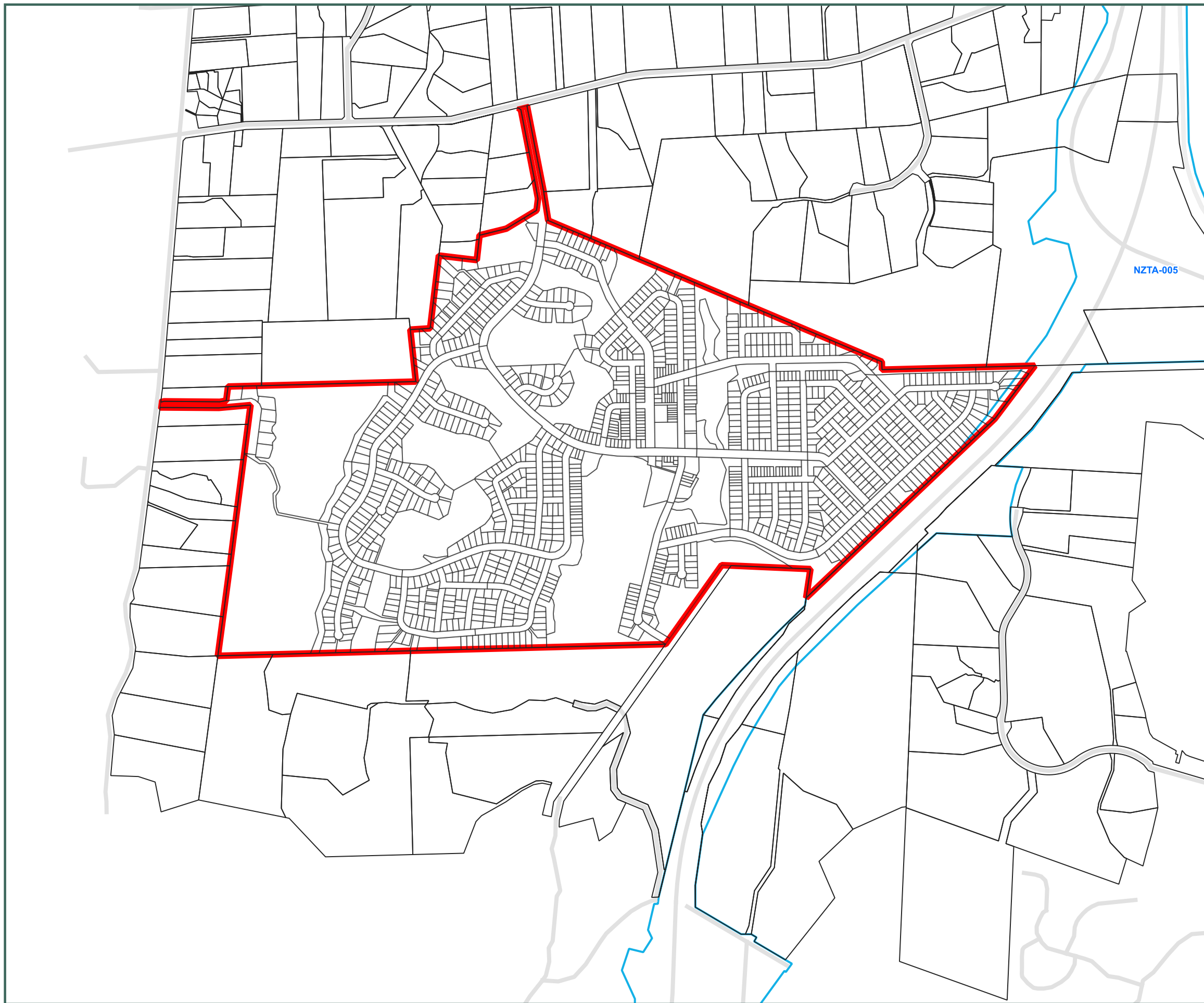
DESIGNED BY	JJH
DRAWN BY	JJH
APPROVED BY	PT

This drawing contains data from other sources and has been prepared for a specific site and event. Landlink Limited does not accept any liability for its accuracy, content or unauthorised use.

DATE 2026-03-13

SCALE Refer Scale Bar

2911-ALL-P-110



Legend

- █ WNDL Boundary
- █ NZTA-005

- Notes:
1. Coordinates in NZGD2000 (Wellington Circuit) and NZVD2016.
 2. Boundaries derived from LINZ DCDB and subject to final survey.
 3. Planning overlays sourced from operative council GIS layers where applicable.
 4. Plan information indicative and subject to change through plan updates or detailed survey.

Designation Overlay Plan
NZTA005

Waikanae North Developments Ltd

Waikanae North
Peka Peka, Kapiti Coast

© Landlink Limited 2025



1 Ngaio Road, Waikanae 5036 + contactus@Landlink.nz

STAGE	ALL
REVISION	C
REVISION DETAILS	Issued For Consent

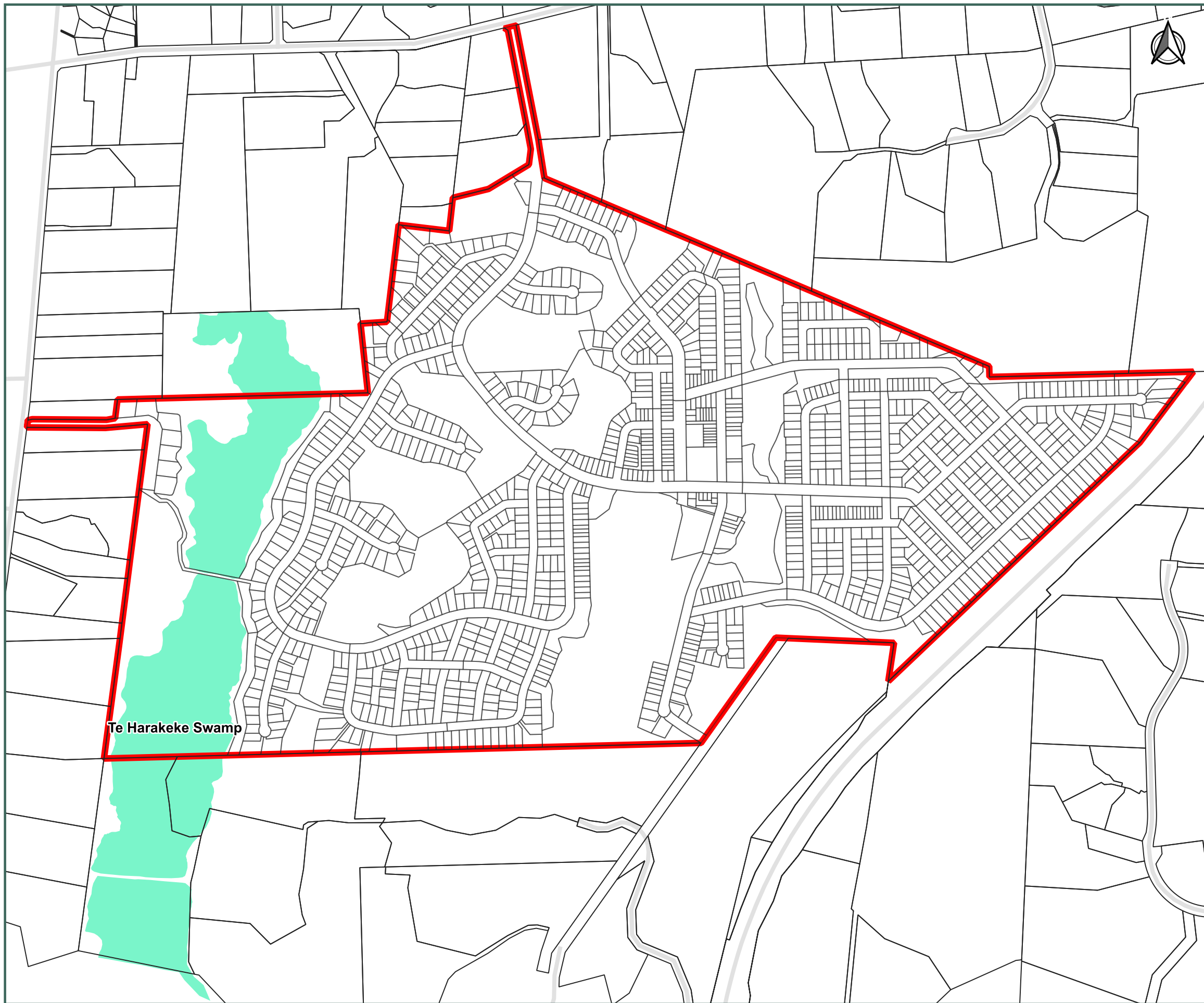
DESIGNED BY	JJH
DRAWN BY	JJH
APPROVED BY	PT

This drawing contains data from other sources and has been prepared for a specific site and event. Landlink Limited does not accept any liability for its accuracy, content or unauthorised use.

DATE 2026-03-13

SCALE Refer Scale Bar

2911-ALL-P-111



0 100 200 300 400 500 m

Legend

- WNDL Boundary
- Schedule A - Outstanding Waterbodies
- Wetland

Notes:

1. Coordinates in NZGD2000 (Wellington Circuit) and NZVD2016.
2. Boundaries derived from LINZ DCDB and subject to final survey.
3. Planning overlays sourced from operative council GIS layers where applicable.
4. Plan information indicative and subject to change through plan updates or detailed survey.

Te Harakeke Swamp

GWRC Schedule A Overlay
Outstanding Waterbodies

Waikanae North Developments Ltd

Waikanae North
Peka Peka, Kapiti Coast

© Landlink Limited 2025



1 Ngaio Road, Waikanae 5036 + contactus@Landlink.nz

This drawing contains data from other sources and has been prepared for a specific site and event. Landlink Limited does not accept any liability for its accuracy, content or unauthorised use.

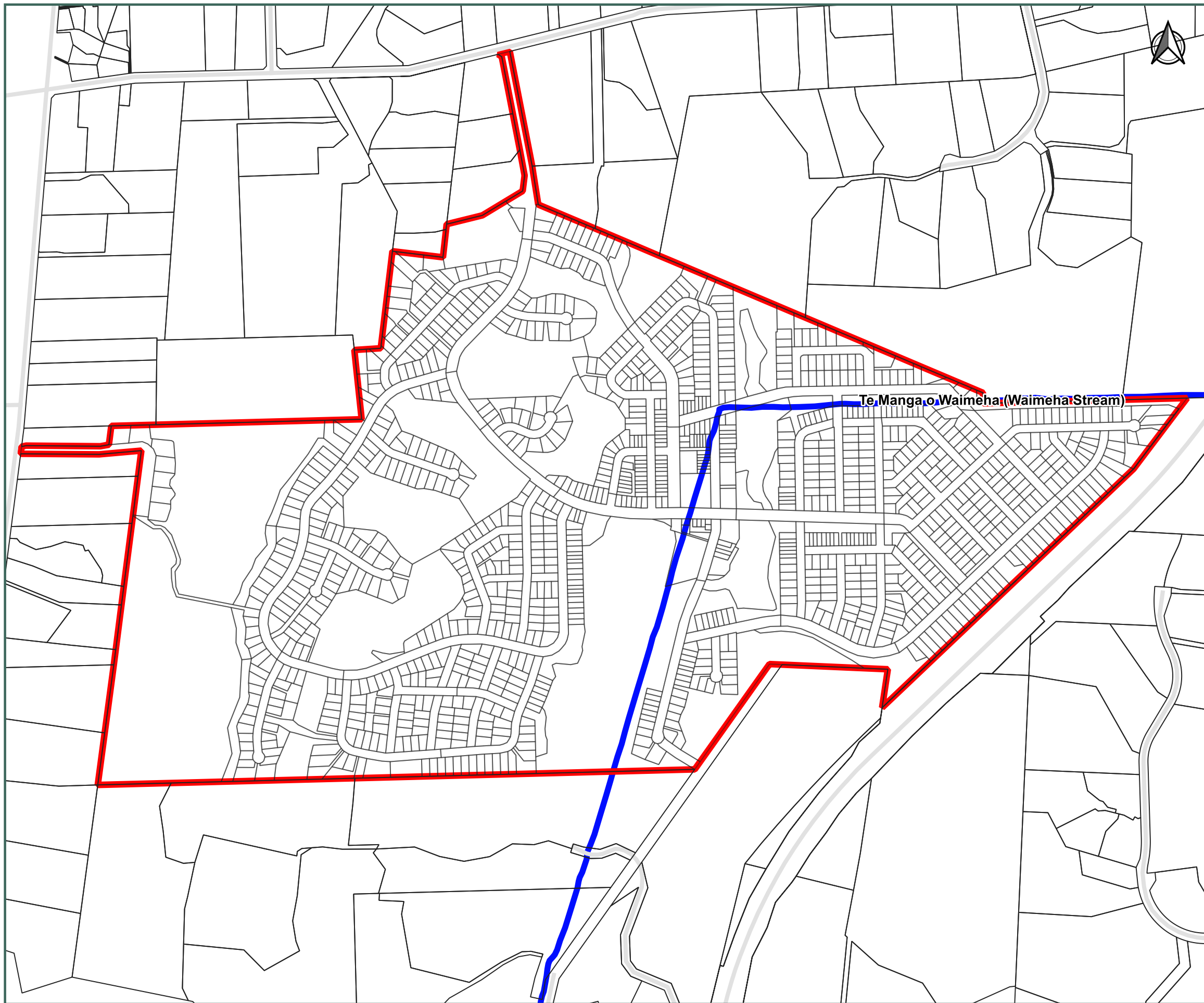
STAGE	ALL
REVISION	C
REVISION DETAILS	Issued For Consent

DESIGNED BY	JJH
DRAWN BY	JJH
APPROVED BY	PT

DATE 2026-03-13

SCALE Refer Scale Bar

2911-ALL-P-112



0 100 200 300 400 500 m

Legend

- WNDL Boundary
- Schedule B - Ngā Taonga Nui a Kiwa

Notes:

1. Coordinates in NZGD2000 (Wellington Circuit) and NZVD2016.
2. Boundaries derived from LINZ DCDB and subject to final survey.
3. Planning overlays sourced from operative council GIS layers where applicable.
4. Plan information indicative and subject to change through plan updates or detailed survey.

GWRC Schedule B Overlay
Ngā Taonga Nui a Kiwa

Waikanae North Developments Ltd

Waikanae North
Peka Peka, Kapiti Coast

© Landlink Limited 2025



1 Ngaio Road, Waikanae 5036 + contactus@Landlink.nz

STAGE	ALL
REVISION	C
REVISION DETAILS	Issued For Consent

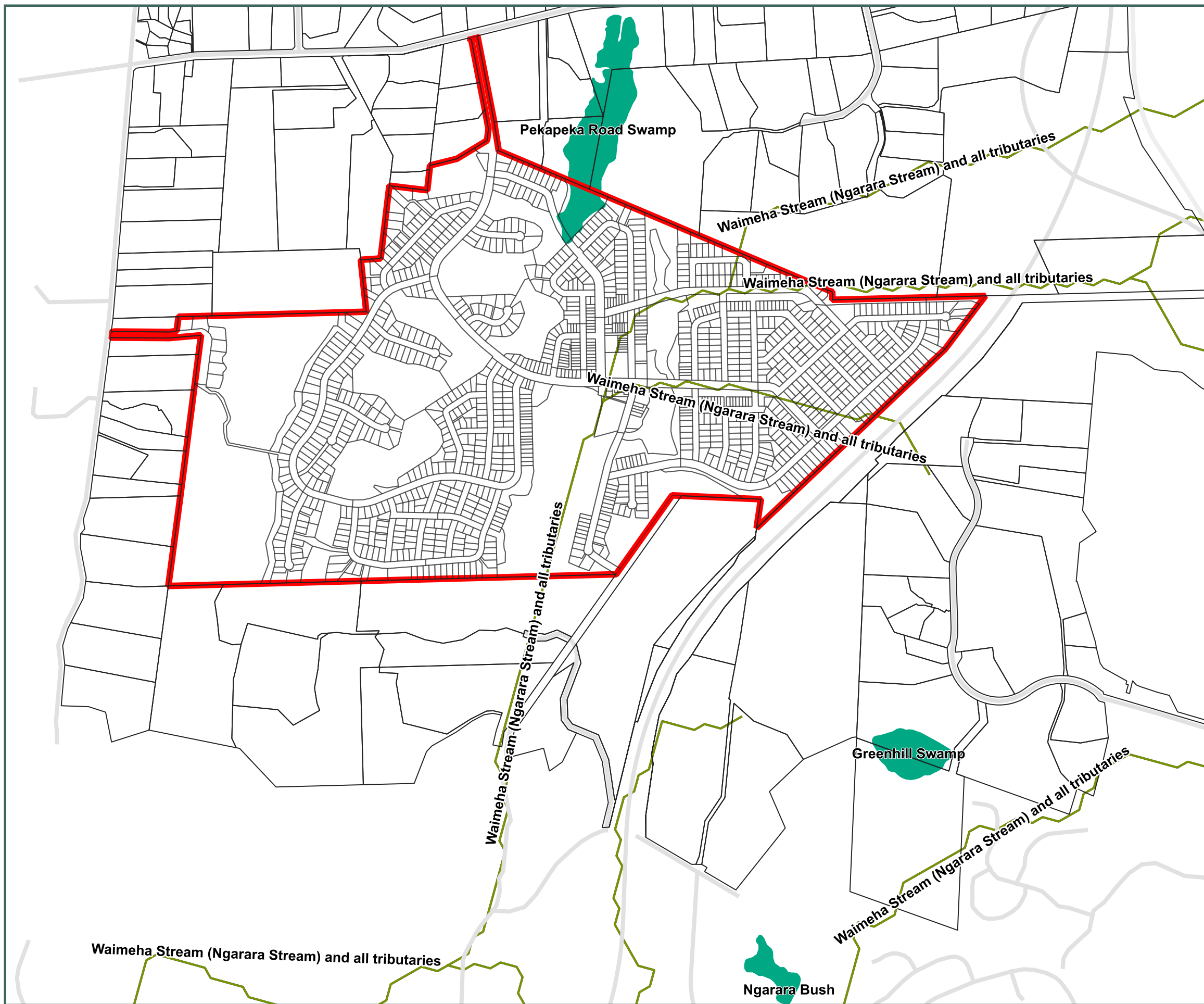
DESIGNED BY	JJH
DRAWN BY	JJH
APPROVED BY	PT

This drawing contains data from other sources and has been prepared for a specific site and event. Landlink Limited does not accept any liability for its accuracy, content or unauthorised use.

DATE 2026-03-13

SCALE Refer Scale Bar

2911-ALL-P-113



0 100 200 300 400 500 m



Legend

- WNDL Boundary
- Migratory Fish Habitat
- Threatened or At Risk Fish Habitat
- Schedule F3 - Identified Natural Wetlands

Notes:

1. Coordinates in NZGD2000 (Wellington Circuit) and NZVD2016.
2. Boundaries derived from LINZ DCDB and subject to final survey.
3. Planning overlays sourced from operative council GIS layers where applicable.
4. Plan information indicative and subject to change through plan updates or detailed survey.

GWRC Schedule F Overlay
Ecosystems

Waikanae North Developments Ltd

Waikanae North
Peka Peka, Kapiti Coast

© Landlink Limited 2025



1 Ngaio Road, Waikanae 5036 + contactus@Landlink.nz

STAGE	ALL
REVISION	C
REVISION DETAILS	Issued For Consent

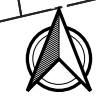
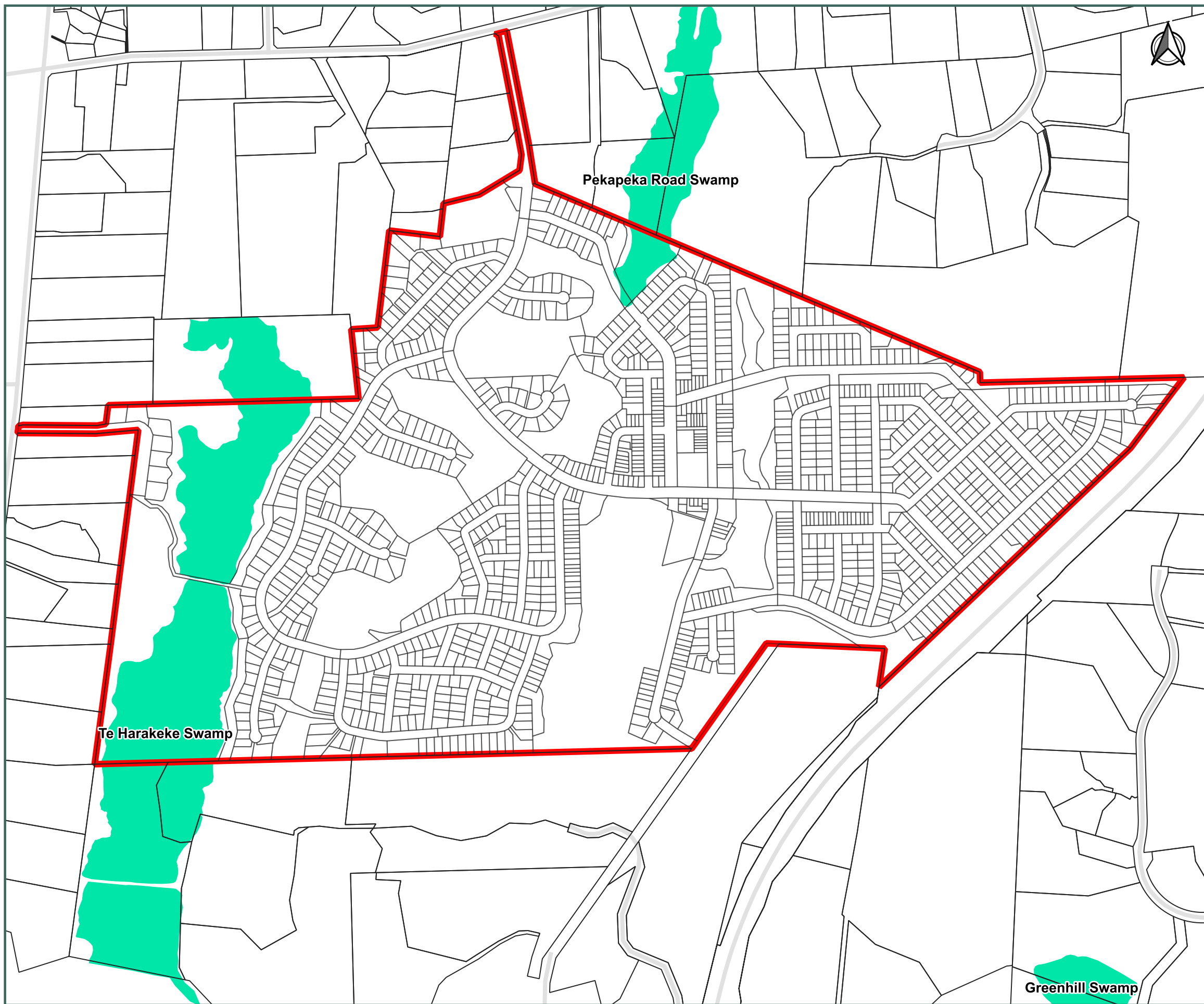
DESIGNED BY	JJH
DRAWN BY	JJH
APPROVED BY	PT

This drawing contains data from other sources and has been prepared for a specific site and event. Landlink Limited does not accept any liability for its accuracy, content or unauthorised use.

DATE 2026-03-13

SCALE Refer Scale Bar

2911-ALL-P-114



Legend

- WNDL Boundary
- Category 1 Surface Waterbodies

Notes:

1. Coordinates in NZGD2000 (Wellington Circuit) and NZVD2016.
2. Boundaries derived from LINZ DCDB and subject to final survey.
3. Planning overlays sourced from operative council GIS layers where applicable.
4. Plan information indicative and subject to change through plan updates or detailed survey.

GWRC Schedule Overlay
Category 1 Waterbodies

Waikanae North Developments Ltd

Waikanae North
Peka Peka, Kapiti Coast

© Landlink Limited 2025



1 Ngaio Road, Waikanae 5036 + contactus@Landlink.nz

STAGE	ALL
REVISION	C
REVISION DETAILS	Issued For Consent

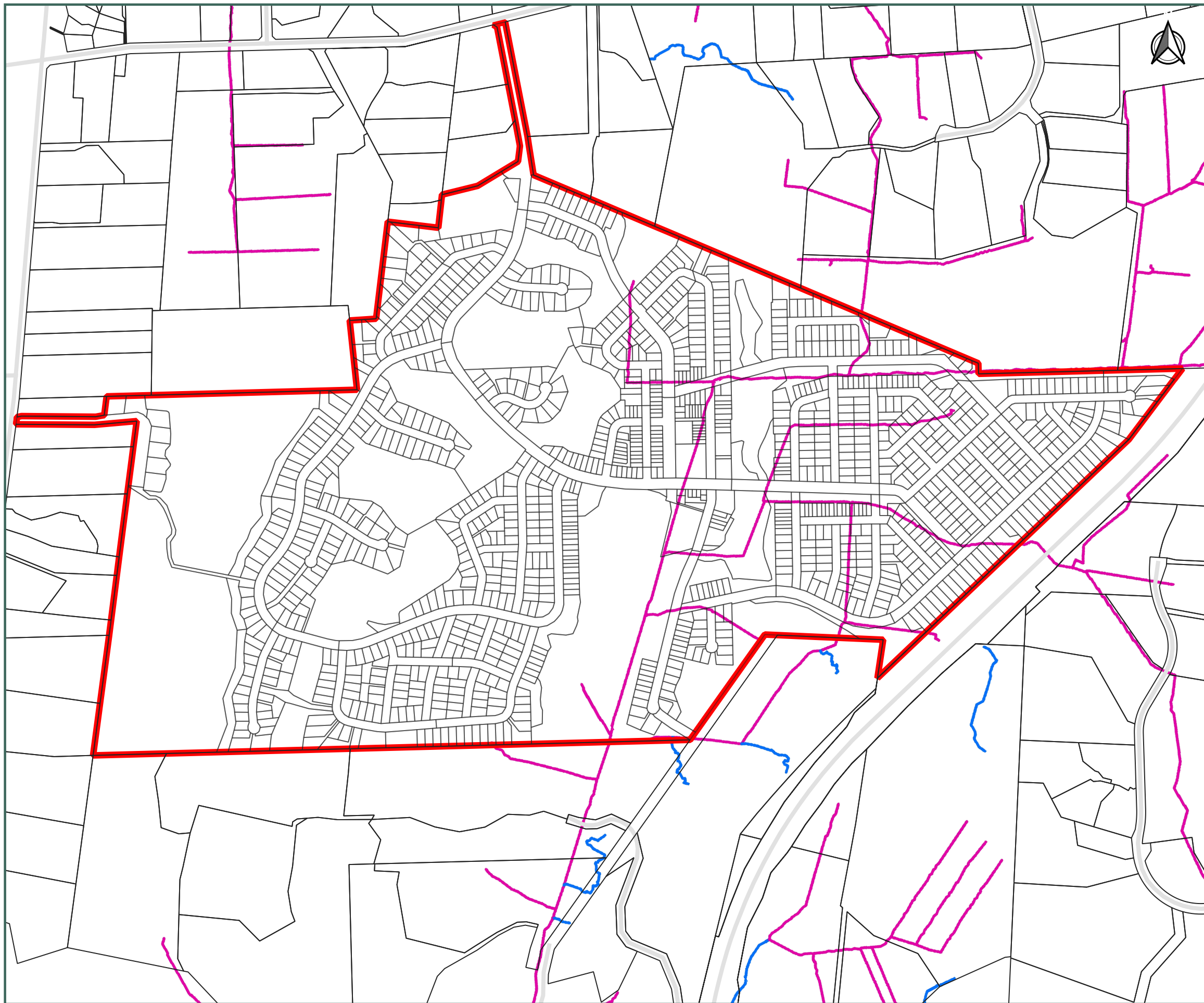
DESIGNED BY	JJH
DRAWN BY	JJH
APPROVED BY	PT

This drawing contains data from other sources and has been prepared for a specific site and event. Landlink Limited does not accept any liability for its accuracy, content or unauthorised use.

DATE 2026-03-13

SCALE Refer Scale Bar

2911-ALL-P-115



0 100 200 300 400 500 m

Legend

- Highly modified rivers or streams
- Natural rivers or streams
- Regional Highly Modified Rivers
- Regional Highly Modified River Areas unmapped areas

Notes:

1. Coordinates in NZGD2000 (Wellington Circuit) and NZVD2016.
2. Boundaries derived from LINZ DCDB and subject to final survey.
3. Planning overlays sourced from operative council GIS layers where applicable.
4. Plan information indicative and subject to change through plan updates or detailed survey.

GWRC Schedule Overlay
Highly Modified Streams

Waikanae North Developments Ltd

Waikanae North
Peka Peka, Kapiti Coast

© Landlink Limited 2025



1 Ngaio Road, Waikanae 5036 + contactus@Landlink.nz

STAGE	ALL
REVISION	C
REVISION DETAILS	Issued For Consent

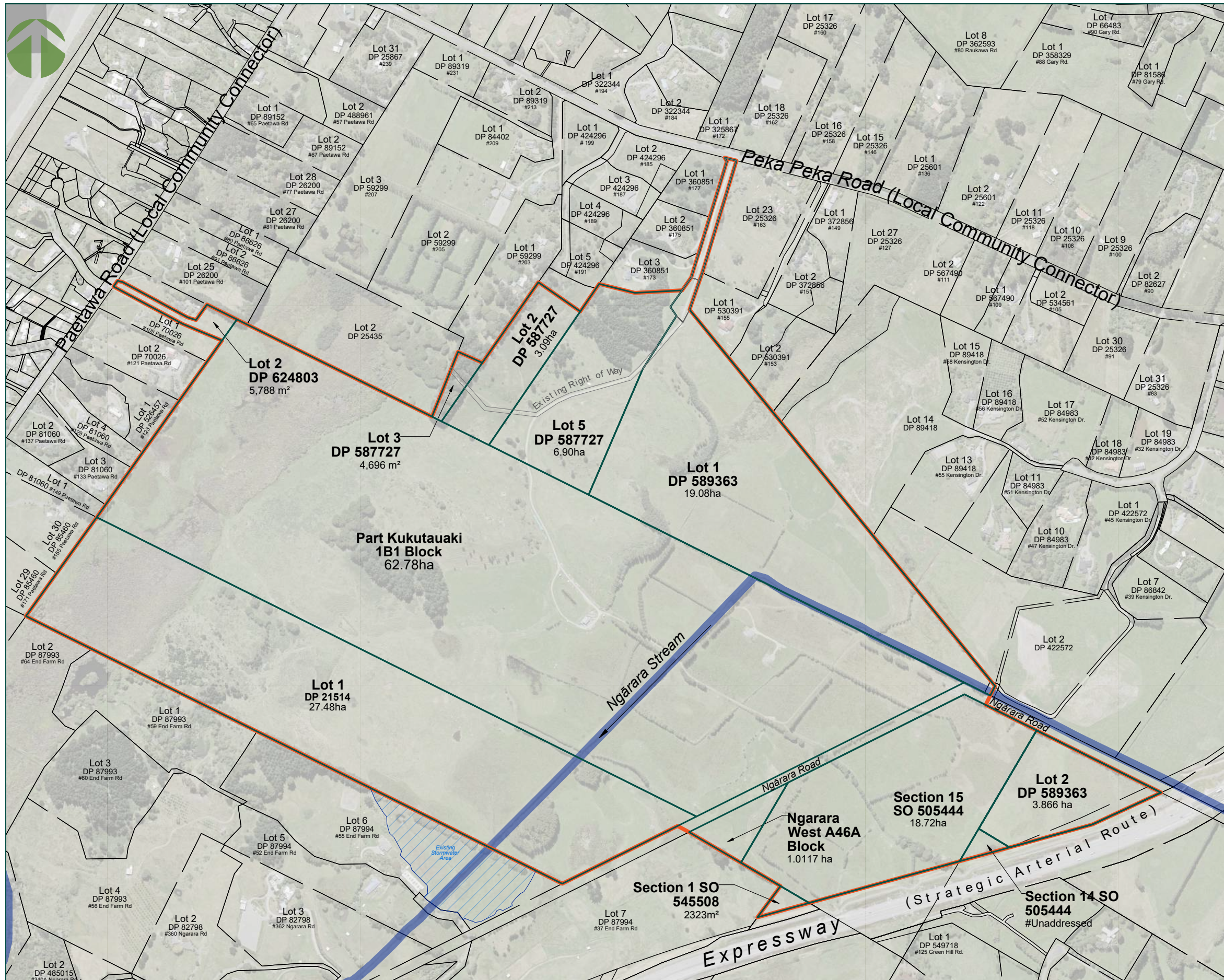
DESIGNED BY	JJH
DRAWN BY	JJH
APPROVED BY	PT

This drawing contains data from other sources and has been prepared for a specific site and event. Landlink Limited does not accept any liability for its accuracy, content or unauthorised use.

DATE 2026-03-13

SCALE Refer Scale Bar

2911-ALL-P-116



Address	Legal Description	Record of Title Number	Parcel Area (ha)	Area (ha)
171 Peka Peka Road	Lots 2, 3 and 5 DP 587727	1122125	10.4623	10.4623
	Lot 1 DP 589363	1123080	19.0866	22.9526
	Lot 2 DP 624803 (107 Paetawa Road) and Part Kukutauaki 1B1 Block	1269459	64.6487	64.6787
169 Peka Peka Road	Section 15 SO 505444	925746	12.187	12.6657
	Section 14 SO 505444		0.2464	
	Section 1 SO 545508		0.2323	
	Ngarara West A46A Block	WN422/216	1.1129	1.1129
	Lot 1 DP 21514	WN910/65	27.485	27.485
			139.3572	139.3572

Address	Legal Description	Record of Title Number	Parcel Area (ha)	Area (ha)
Ngarara Road	Legal road		2.05	2.05
			2.05	2.05

Development Land	Legal Description	Record of Title Number	Parcel Area (ha)	Area (ha)
The site	As above	Various	139.3572	139.3572
Ngarara Road	Legal road		2.05	2.05
			141.4072	141.4072

- GENERAL NOTES**
- Plan is in terms of New Zealand Geodetic Datum 2000 (Whanganui Curcuit).
 - Boundaries are from the Land Information New Zealand. (LINZ) Digital Cadastral Database (DCDB).
 - Aerial photography is from the LINZ Data Service.

This drawing contains data from other sources and has been prepared for a specific site and event. Landlink Limited does not accept any liability for its accuracy, content or unauthorised use.

Waikanae North Developments Limited

Current Title Configuration

Peka Peka Road,
Peka Peka

© Landlink Limited 2025



1 Ngaio Road, Waikanae 5036 + contactus@Landlink.nz

STAGE	ALL
REVISION	C
REVISION DETAILS	Issued For Consent

DESIGNED BY	JJH
DRAWN BY	JJH
APPROVED BY	PT

DATE 24/03/2026
SCALE 1:750

2911-P-ALL-P-118