



SUPERSEDED

A

APPENDIX A

Project Site Design



LEGEND

Wind Farm

- Wind Turbines
- ▲ Permanent Meteorological Mast
- Sub Station
- ◇ Water Take Location
- ▭ WS and BPF Envelope Area
- ▭ O&M Building Location Envelope Area
- ▭ Substation Envelope Area
- Civil Works Design
- ▭ Wind Farm Site

Grid Connection

- ◆ Grid Injection Point (GIP)
- ▭ GIP Envelope Area
- Transmission Line Route
- ▭ Transmission Line Corridor (200m Wide)

Property

Wind Farm Properties

- Glencoe Station
- Matariki (Venlaw) Forests
- Jedburgh Station

Transmission Line Properties

- Salvation Army Trust
- Port Blakely

Other Properties

- Contact Energy Property

Other

- Transpower 220kV Transmission Line
- ▨ DOC Public Conservation Area
- ▨ DOC Stewardship Area
- ▭ District Council Boundary
- ▭ Regional Council Boundary

MAP SCALE



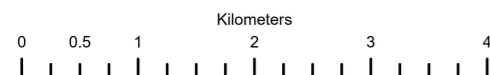
Scale: 1:65,000

PRINT DATE

31/07/2025

VERSION

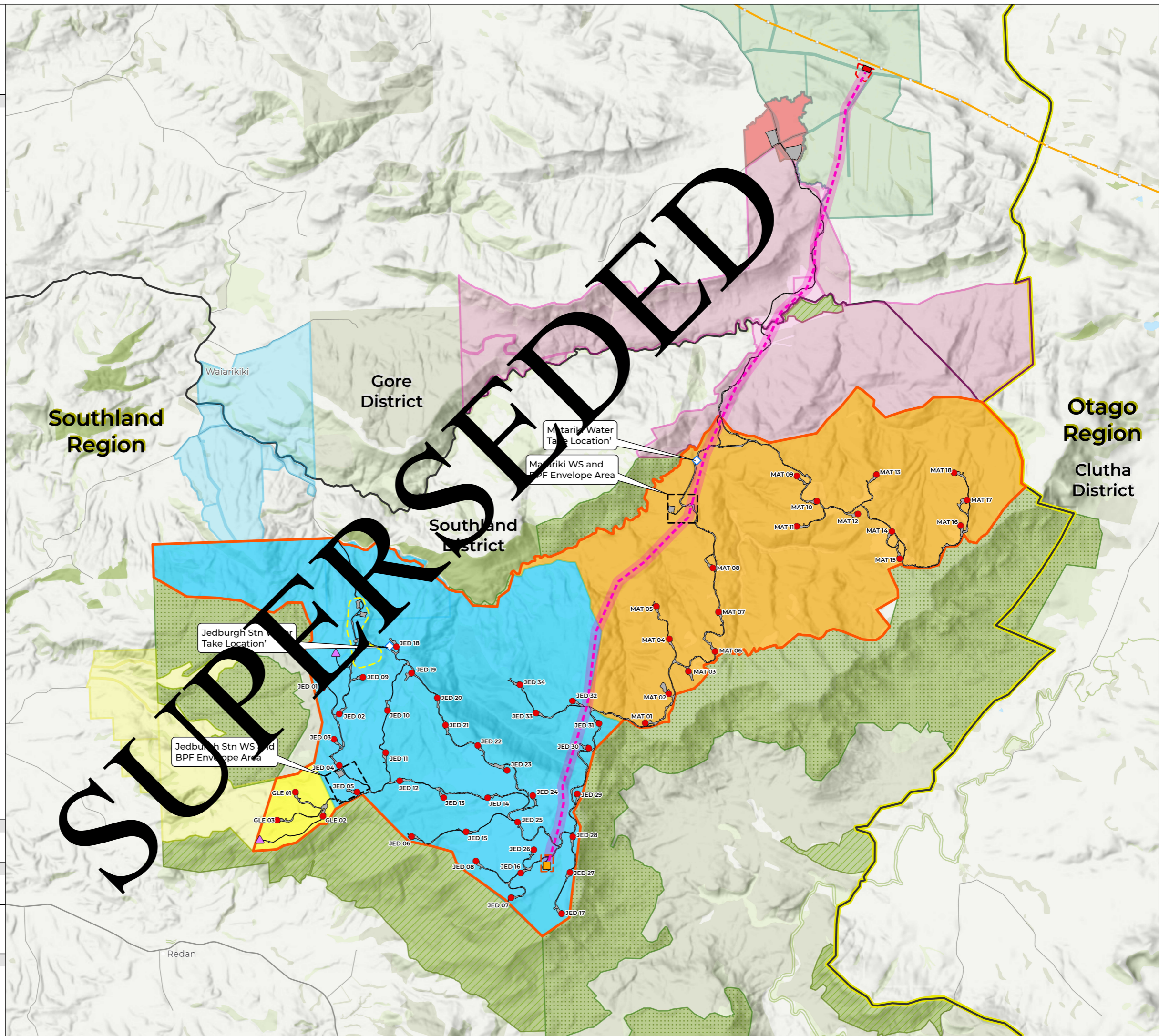
1.0




TITLE

FIGURE CONDITIONS - 1

PROJECT SITE DESIGN





SUPERSEDED

B

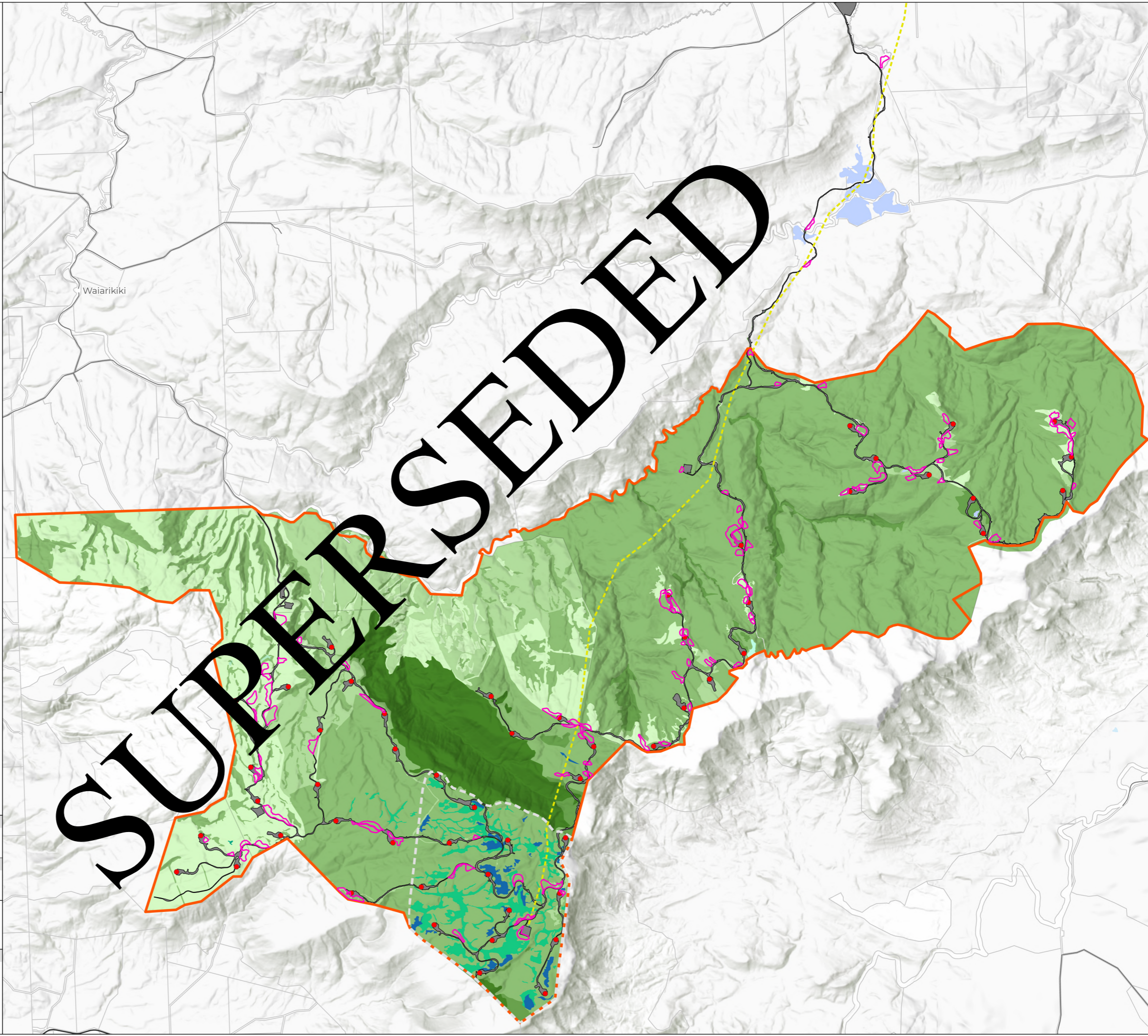
APPENDIX B

Surplus Fill Disposal Sites

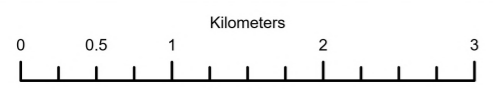


LEGEND

- Wind Turbines
- Transmission Line Route
- Civil Works Design
- Wind Farm Site
- Jedburgh Plateau (c. 530 ha)
- Surplus Fill Disposal Sites
- Mapped Wetlands
 - Bog wetland
 - Fen wetland
 - Copper tussock/rautahi marsh
 - Copper tussock-rautahi swamp
 - Mānuka-inaka/copper tussock marsh
- Mapped Vegetation EcoValue
 - Negligible
 - Low
 - Moderate
 - High
 - Very high



MAP SCALE	PRINT DATE
N Scale: 1:50,000	15/08/2025
	VERSION
	1.0



TITLE
FIGURE PROJECT DESCRIPTION - 7
POTENTIAL SURPLUS FILL DISPOSAL SITES
AND MAPPED VEGETATION ECO-VALUES

Service Layer Credits: Eagle Technology, LINZ



SUPERSEDED

C

APPENDIX C

Stream Crossing Locations



LEGEND

- Wind Turbines
- Grid Injection Point (GIP)
- Sub Station
- Transmission Line Route
- Transpower 220kV Transmission Line
- Civil Works Design
- Wind Farm Site

- ◆ Potential Water Take Location
- Notable Stream Crossings
- + Aquatic Ecology Sites (Ryder)
- + Aquatic Ecology Sites (Wildlands)

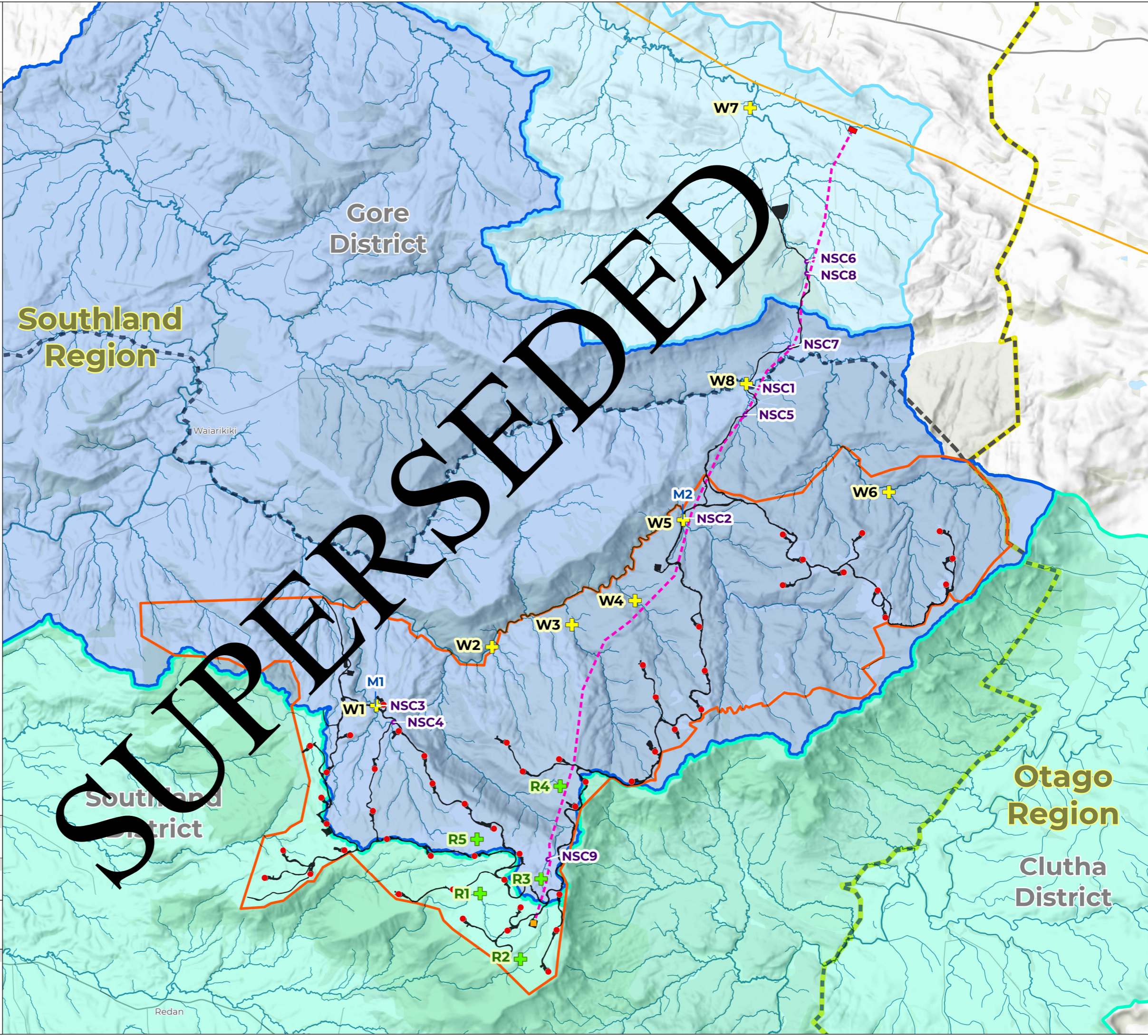
- Mimiha Catchment
- Mokoreta Catchment
- Kaiwera Catchment

- District Council Boundary
- Regional Council Boundary


Note on Aquatic Ecology Site Surveys
 Sites R1 to R5 surveyed by Ryder Feb 2008
 Sites W1 to W7 surveyed by Wildlands in Dec 2022
 Sites W8 surveyed by Wildlands in Apr 2023

MAP SCALE	PRINT DATE
N Scale: 1:65,000	24/06/2025
	VERSION
	1.1

TITLE
FIGURE AQUATIC ECOLOGY - 2
 AQUATIC ECOLOGY SITES & CATCHMENTS,
 NOTABLE STREAM CROSSINGS AND
 POTENTIAL WATER TAKE LOCATIONS



Service Layer Credits: Eagle Technology, LINZ



SUPERSEDED

D

APPENDIX D

Ecological Enhancement Areas



Davidson Road Wetland Restoration Site.
(See Figure Terrestrial Ecology - 3d
for a more detailed view)

LEGEND

Wind Farm

- Wind Turbines
- Transmission Line Route
- ▭ Wind Farm Site
- ▭ Civil Works Design

Enhancement & Restoration Areas

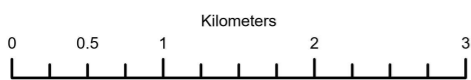
- ▭ Jedburgh Station Pest Control Area (c.1,400 ha, unfenced)
- ▭ Jedburgh Plateau (c. 530 ha, unfenced)
- ▭ Jedburgh Station Ecological Enhancement Area (c. 245 ha, fenced)
- ▭ Copper Tussock Enhancement and Skink Protection Area (c. 8 ha, fenced)
- ▭ Plateau Fauna Enhancement Area (c. 55 ha, unfenced)

Davidson Road

- ▭ Davidson Road Wetland Restoration Areas (c. 5.1 ha)
- ▭ Davidson Road Terrestrial Vegetation Planting Areas (c. 1.0 ha)
- ▭ Davidson Road Wetland Enhancement Areas (c. 6.7 ha)
- ▭ Contact Energy Property

MAP SCALE

Scale: 1:50,000



PRINT DATE

8/08/2025

VERSION

1.0

CREDITS:

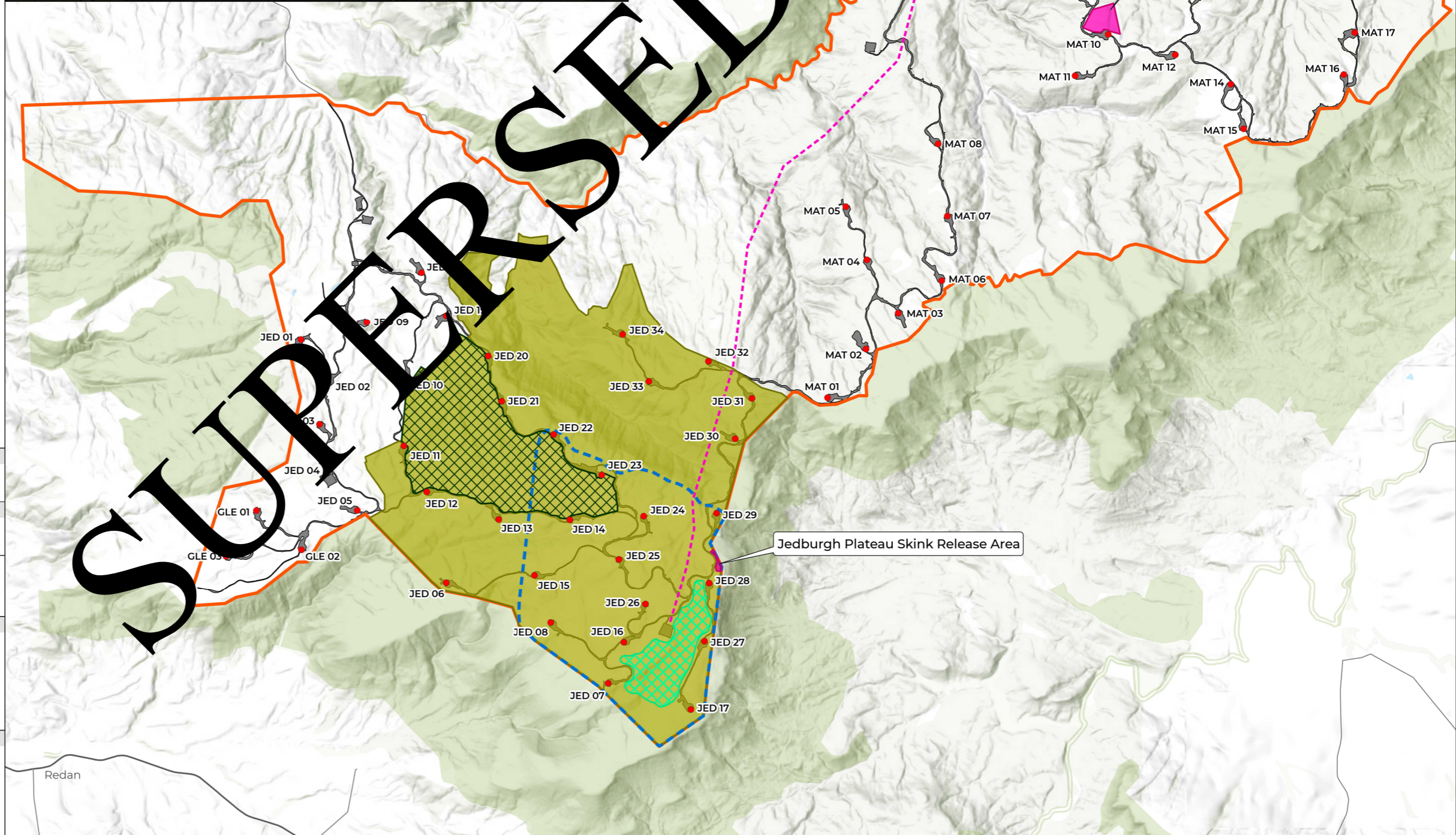
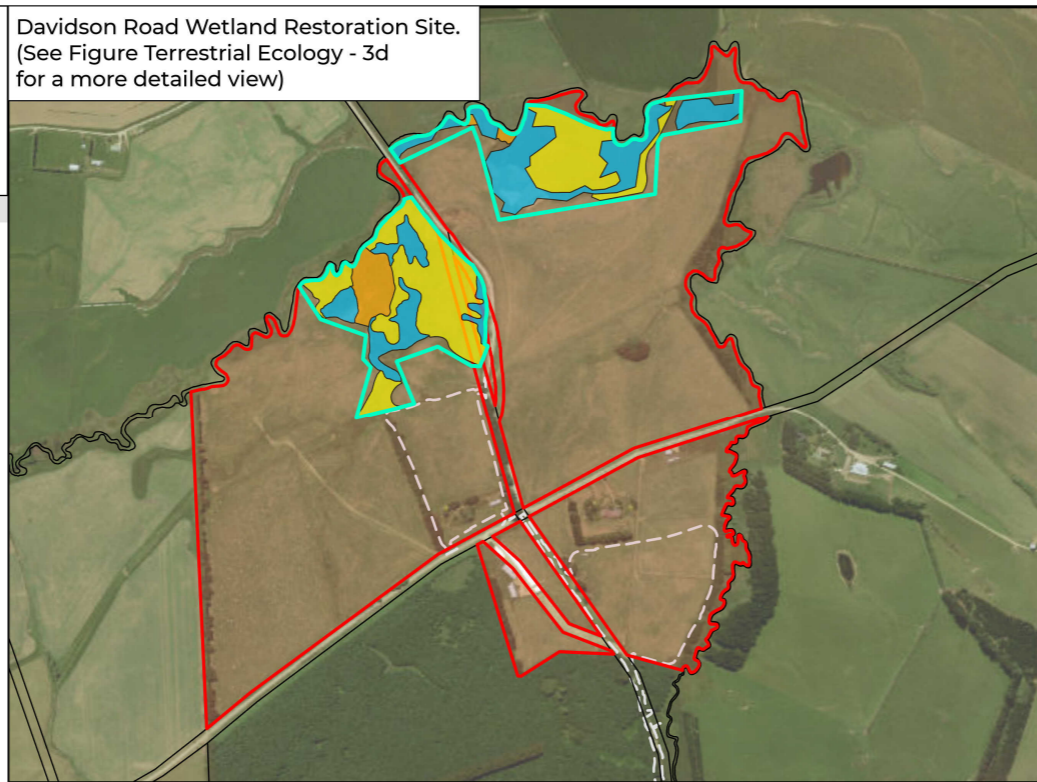


Wildlands

Ecological data provided by Wildlands Consultants

TITLE

FIGURE TERRESTRIAL ECOLOGY - 3a
OVERVIEW OF THE ECOLOGICAL
ENHANCEMENT AND RESTORATION
AREAS ON THE WIND FARM SITE



Davidson Road Wetland
Restoration Site
Approximately 1.5km North

Copper Tussock Enhancement
and Skink Protection Area

Jedburgh Plateau Skink Release Area

Redan



LEGEND

Wind Farm

- Wind Turbines
- - - Transmission Line Route
- - - Surplus Fill Disposal Sites
- ▭ Wind Farm Site
- ▭ Civil Works Design

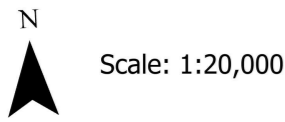
Indicative Traps and Bait Stations

- DOC150 Traps
- DOC200 Traps
- Cat Kill Traps
- Rodent Bait Stations (100m X 50m Grid)

Enhancement & Restoration Areas

- ▭ Jedburgh Station Pest Control Area (c.1,400 ha, unfenced)
- - - Jedburgh Plateau (c. 530 ha, unfenced)
- ▭ Jedburgh Station Ecological Enhancement Area (c. 245 ha, fenced)
- ▭ Jedburgh Plateau Skink Release Area (c. 0.48 ha, unfenced)
- ▭ Plateau Fauna Enhancement Area (c. 55 ha, unfenced)
- ▭ Invertebrate Habitat Enhancement Areas (c. 1.6 ha, unfenced)
- ▭ Tautuku Gecko Soft Release Pen (c. 2.6 ha, temporary fence)

MAP SCALE

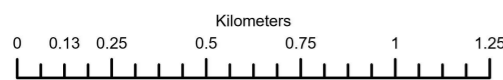


PRINT DATE

6/08/2025

VERSION

1.0



CREDITS:

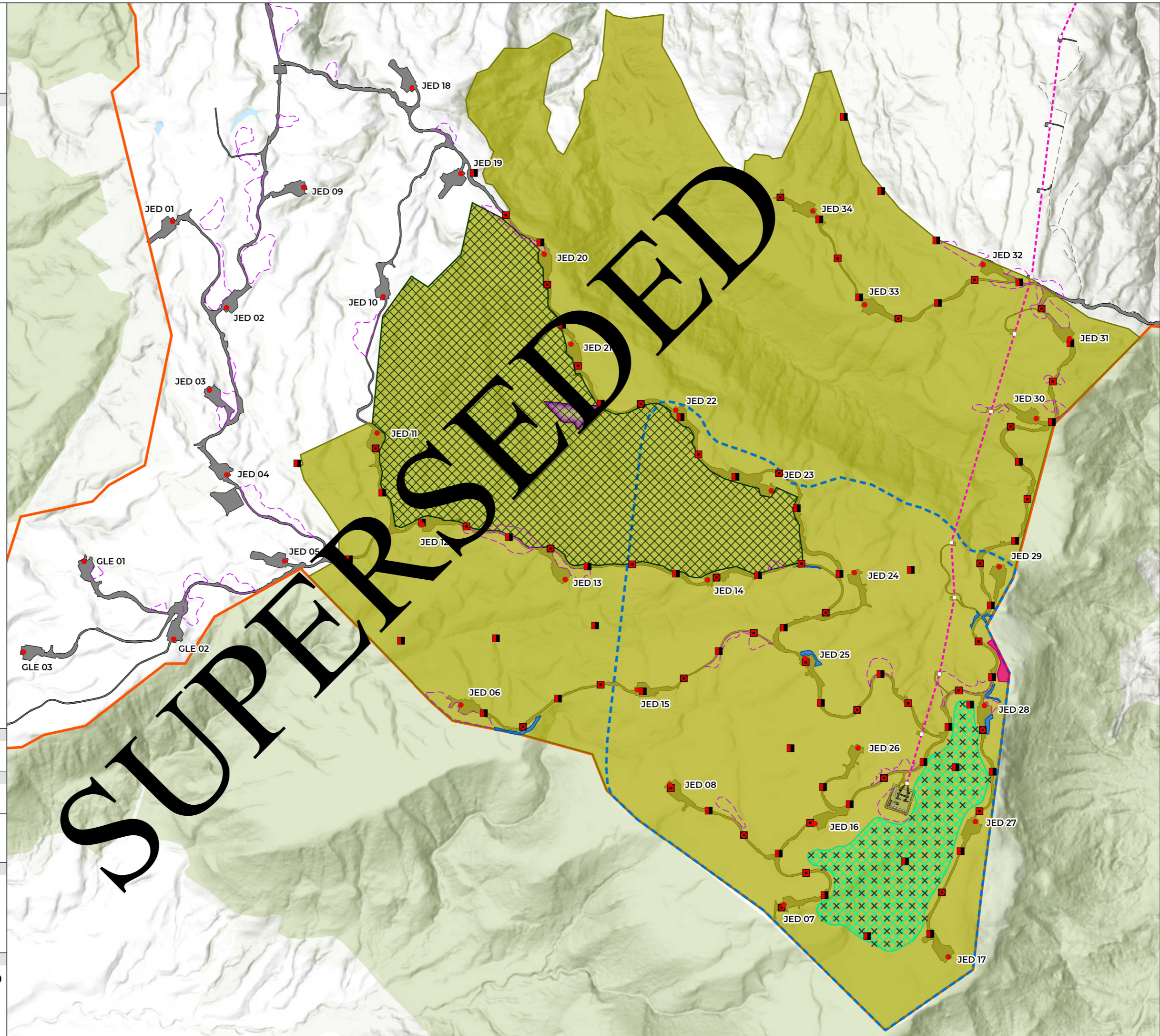


Wildlands

Ecological data provided by Wildlands Consultants

TITLE

FIGURE TERRESTRIAL ECOLOGY - 3b
 ECOLOGICAL ENHANCEMENT
 AND RESTORATION AREAS ON
 JEDBURGH STATION





LEGEND

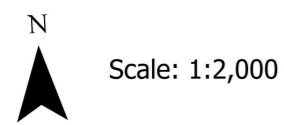
Wind Farm

- Wind Turbines
- Civil Works Design

Enhancement & Restoration Areas

- × Post Release Monitoring Traps
- Ungulate Exclusion Fence
- ▨ Copper Tussock Enhancement and Skink Protection Area (c. 8 ha)

MAP SCALE

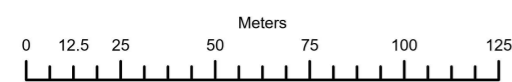


PRINT DATE

8/08/2025

VERSION

1.0



CREDITS:



Wildlands

Ecological data provided by Wildlands Consultants

TITLE

FIGURE TERRESTRIAL ECOLOGY - 3c
 COPPER TUSSOCK ENHANCEMENT
 AND SKINK PROTECTION AREA ON
 MATARIKI FOREST

Service Layer Credits: Environment Southland, LINZ, Eagle Technology, LINZ





LEGEND

Wind Farm

- Temporary Laydown Areas
- Contact Energy Property

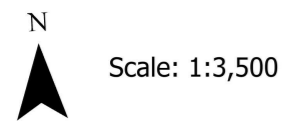
Enhancement & Restoration Areas

- Davidson Road Wetland Restoration and Covenant Area (c. 15 ha, fenced)
- Davidson Road Wetland Restoration Areas (c. 5.1 ha)
- Davidson Road Terrestrial Vegetation Planting Areas (c. 1.0 ha)
- Davidson Road Wetland Enhancement Areas (c. 6.7 ha)

Note

All areas shown above are subject to further discussion with Gore District Council about the paper road through the Contact Energy property and the adjoining property owner.

MAP SCALE

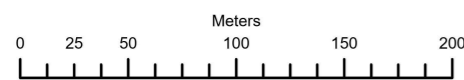


PRINT DATE

8/08/2025

VERSION

1.0



CREDITS:



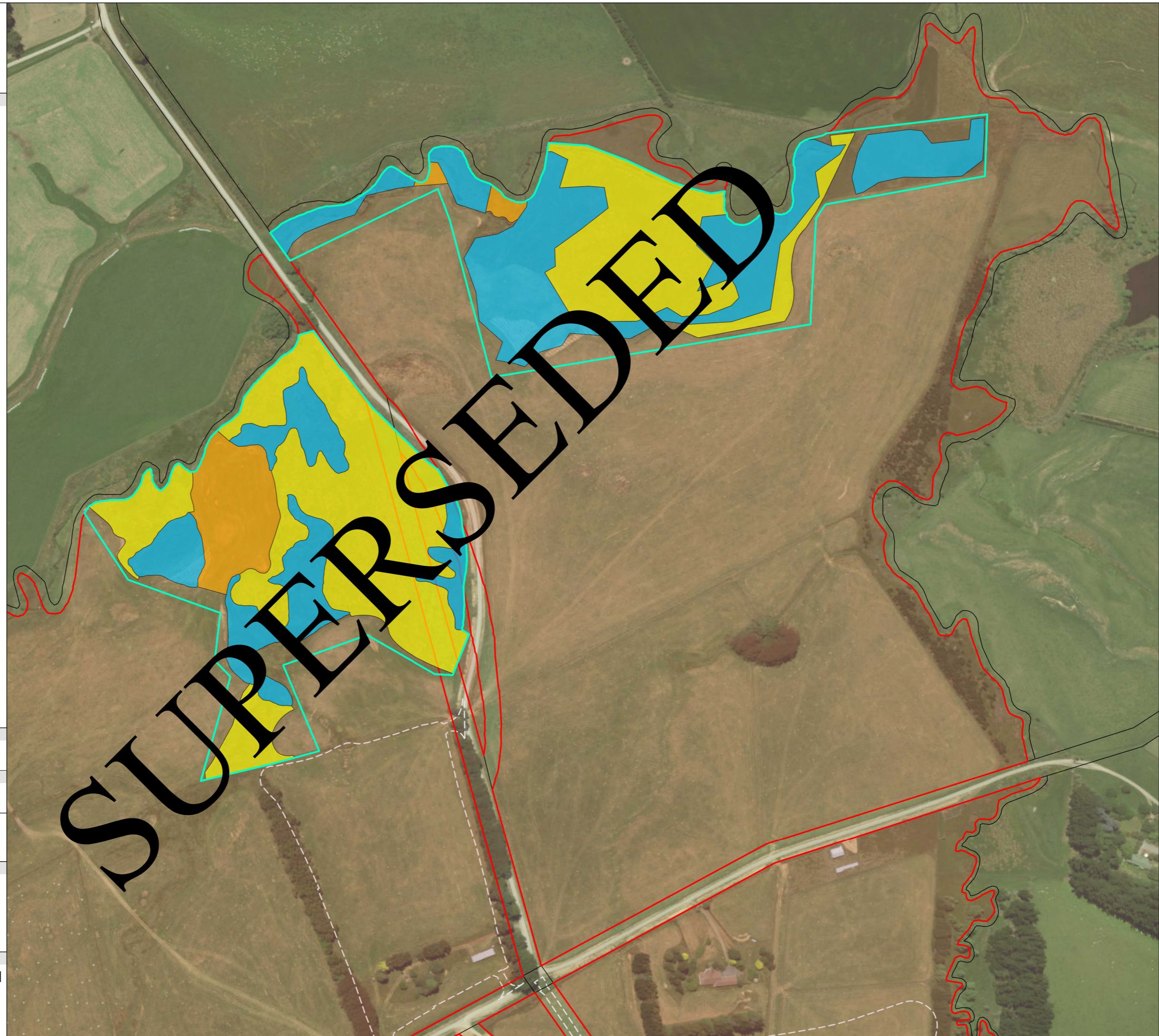
Wildlands

Ecological data provided by Wildlands Consultants

TITLE

FIGURE TERRESTRIAL ECOLOGY - 3d

DAVIDSON ROAD WETLAND RESTORATION SITE AND PROPOSED COVENANT



SUPERSEDED



SUPERSEDED

E

APPENDIX E

List of properties relating to conditions
WF26 and NO8

APPENDIX E – SOUTHLAND WIND FARM RESOURCE CONSENT CONDITIONS

Condition WF26 – List of properties identified in the Landscape, Visual and Natural Character effects assessment (Report 3), prepared by Brad Coombs, as having an adverse visual effect on a dwelling that is moderate or greater:

House ID	Address	Degree of Effect	Easting	Northing
1	1403 Wyndham-Mokoreta Road, Redan 9892	Moderate - High	1292812.295	4857283.656
2	1281 Wyndham-Mokoreta Road, Redan 9892	Moderate - High	1291257.339	4857697.511
3	1282 Wyndham-Mokoreta Road, Redan 9892	Moderate - High	1291258	4857133
7	1205 Wyndham-Mokoreta Road, Redan 9892	Moderate - High	1290847.935	4857330.841
8	1206 Wyndham-Mokoreta Road, Redan 9892	Moderate - High	1290879.285	4857234.551
10	1200 Wyndham-Mokoreta Road, Redan 9892	Moderate - High	1290787.633	4857218.716
12	676 Wood Road, Oware 9892	Moderate - High	1289609.273	4859134.77
13	1528 Wyndham-Mokoreta Road, Redan 9892	Moderate - High	1293650.759	4856318.031
14	999 Wyndham-Mokoreta Road, Redan 9892	Moderate - High	1289936.451	4857801.884
16	1542 Wyndham-Mokoreta Road, Redan 9892	Moderate - High	1293700.983	4856124.49
17	1408 Wyndham-Mokoreta Road, Redan 9892	Moderate	1292813.53	4856109.724



22	68 McDonald Road, Redan 9892	Moderate	1290656.495	4856419.446
26	1623 Wyndham-Mokoreta Road, Redan 9892	Moderate	1294139.569	4855314.817
27	24 Irwin Road, Oware 9892	Moderate	1288957.417	4861166.925
28	1000 Wyndham-Mokoreta Road, Redan 9892	Moderate	1288919.1	4857901.7

Condition NO8 – List of dwellings identified in the Noise Effects Assessment (report 17) prepared by Miklin Halstead, where predicted turbine noise levels were modelled. A compliance assessment report will be completed for these properties in accordance with Condition NO8:

Dwelling Number – Address as listed in the Noise Effects Assessment
02 – 267 Venlaw Rd
20 – 696 Woods Rd
39 – 1403 Wyndham-Mokoreta Rd
42 – 1542 Wyndham-Mokoreta Rd
76 – 1380 Slopedown Rd
77 – 1388 Slopedown Rd

SUPERSEDED