

## Fast-track – Response to DoC - Landscape

Proposed Solar Farm  
The Point, Mackenzie Basin

11 March 2026



# Document Quality Assurance

Bibliographic reference for citation:

Rough Milne Mitchell Landscape Architects Limited. Fast-track – Response to DoC - Landscape. Proposed Solar Farm. The Point, Mackenzie Basin. 11 March 2026.

Date: 11 March 2026

Project Number: 22226

Status: Fast-track Application

Prepared for: Far North Solar Farm Ltd

Prepared by:



.....  
Paul Smith  
Senior Landscape Architect – NZILA (Registered)

Rough Milne Mitchell Landscape Architects Limited  
Level Two  
69 Cambridge Terrace  
Christchurch 8013  
PO Box 3764  
Christchurch 8140  
Ph: 03 366 3268

## Use and Reliance

This report has been prepared by Rough Milne Mitchell Landscape Architects Limited on the specific instructions of our client. It is solely for our client's use for the purpose for which it is intended in accordance with the agreed scope of work. Rough Milne Mitchell Landscape Architects does not accept any liability or responsibility in relation to the use of this report contrary to the above, or to any person other than the Client. Any use or reliance by a third party is at that party's own risk. Where information has been supplied by the Client or obtained from other external sources, it has been assumed that it is accurate, without independent verification, unless otherwise indicated. No liability or responsibility is accepted by Rough Milne Mitchell Landscape Architects Limited for any errors or omissions to the extent that they arise from inaccurate information provided by the Client or any external source.

Rough Milne Mitchell Landscape Architects Limited acknowledges that this report will be relied on by a Panel appointed under the Fast Track Approvals Act 2024 and this disclaimer does not prevent that reliance.

## Contents

1	Introduction .....	4
2	Section 53 Parties – Response to Landscape Issues .....	4

# 1 Introduction

## 1.1 Background, Purpose and Scope

Rough Milne Mitchell Landscape Architects (**RMM**) have prepared the Landscape Assessment Report, dated 25 May 2023 (**the Landscape Report**), and the Addendum Landscape Assessment Report, dated 15 June 2025 (**the Addendum Report**) that formed part of Far North Solar Farm's Fast-track Application. Noting that the Landscape Report was originally prepared for a resource consent application.

Since lodgement, I attended the Expert Panel Overview Conference on 16 January 2026 and have responded to the landscape related matters in the Request for Further Information (**RFI**) Response 1, dated 16 February 2026 and RFI Response 2, dated 23 February 2026, and responded to the landscape related issues raised by the Section 53 parties, dated 26 February 2026.

The purpose of this report is to respond to the landscape related matters that have been raised by Mr Richard Ewans on behalf of the Department of Conservation.

# 2 Section 53 Parties – Response to Landscape Issues

I have reviewed Mr Richard Ewans comments dated 5 March 2026.

I appreciate Mr Ewans comments. I have reviewed Mr Ewan's commentary and how they justify his recommendations. For ease, I respond to his recommendations below:

## 2.1 **Plantings for landscape screening are restricted via consent conditions to those listed in Appendix 3 of the author's initial comments dated 11 February 2026.**

The proposed condition in Landscape RFI 2 provides some flexibility to include other native plant species within the Landscape Mitigation planting area. These other native plant species require approval from an ecologist, to ensure they are appropriate for this environment.

This flexibility is sought because we do not see the need to vary resource consent conditions if a chosen plant species does not establish as well as originally intended and another plant species is to be included. Also, importantly, these native plants are 40m or more from the 'at-risk plant species', are replacing exotic grasses / pasture cover and can be planted as a permitted activity. Therefore, a condition restricting native plant species within a specific part of the site is not warranted.

## 2.2 **Plantings for landscape screening are not irrigated if within 50 m of the property boundary fence.**

Wildlands have observed indigenous dryland plant communities surviving on the terrace edge to the west, just beyond the spray zone of the pivot irrigator and National Critical *Lepidium solandri* growing on the terrace edge, to the east, metres away from cultivated pasture. These observations are

demonstrative of the strong ecotone divide and lack of connectivity between these habitats and demonstrate that the irrigation from the pivot, including spray drift does not preclude the growth of these plants. Whilst I am not a hydrologist, the terrace is freely draining comprising of alluvial gravels. As such, there appears to be no hydrological connectivity between the Landscape Mitigation Area and the terrace edge. Therefore, it is highly unlikely that irrigation will laterally spread 40m+ creating a damp environment.

Due to the above, this recommendation is not being adopted.

After further consideration, the Applicant is happy to use a dripline irrigation system rather than manual watering, which may mitigate the majority of Mr Ewan's concerns. If Mr Ewan is happy with this suggestion, we would welcome a conference session, rather than a formal back and forth to draft appropriate conditions. Noting the final suite of conditions are due on 11 April 2026. The below responses to 3 are relevant if manual watering is preferred by DoC.

- 2.3 Plantings for landscape screening greater than 50 m from the property boundary fence are only irrigated on still days or days with a southerly or easterly wind direction up to 20 km/hr; should use heavy droplets not fine mist spray; and be used a maximum of once per month between November and April for a maximum of 3 years starting when planted; using a top down boom facing away from the property boundary**

Recommendation 3 can be broken into several sections as numbered below.

- 2.3.1 Landscape screening greater than 50 m from the property boundary fence**

As per the response to 2 above, the below details relating to irrigation relate to all Landscape Mitigation Areas.

- 2.3.2 Only irrigated on still days or days with a southerly or easterly wind direction up to 20 km/hr**

The conditions will be updated to reflect the wind direction.

The exact speed of the wind may become problematic if the wind were to 'pick up' when undertaken this work site. Noting the response in 2 above and spray drift would be away from the at-risk plants. Therefore, an exact speed is not adopted. Rather, the term 'gentle **southerly or easterly wind direction**' will be included.

- 2.3.3 Should use heavy droplets not fine mist spray**

We agree that droplets rather than a fine mist will reduce spray drift. It will also be more effective for watering purposes.

This will be adopted in the updated conditions.

- 2.3.4 Be used a maximum of once per month between November and April**

Plant root balls will be soaked prior to planting and will be planted with water crystals. Wildlands have informed me that these two methods, in particular the slow release of moisture will assist with plant establishment.

I appreciate DoC seeking minimal watering to reduce cross boundary effects. However, it must bear in mind that these native plants are to establish and mature for screening purposes. Therefore, irrigating once a month is very limiting. Based on the response to 2 above, I do not consider that the frequency of irrigation needs to be capped.

**2.3.5 Maximum of 3 years starting when planted**

This is included in the conditions.

**2.3.6 Top down boom facing away from the property boundary**

This is included in the conditions.

**2.4 Plantings for lizard and terrestrial invertebrate habitat enhancement are restricted via consent conditions to those listed in Appendix 2 and Appendix 3 of the author's initial comments dated 11 February 2026 and are not irrigated.**

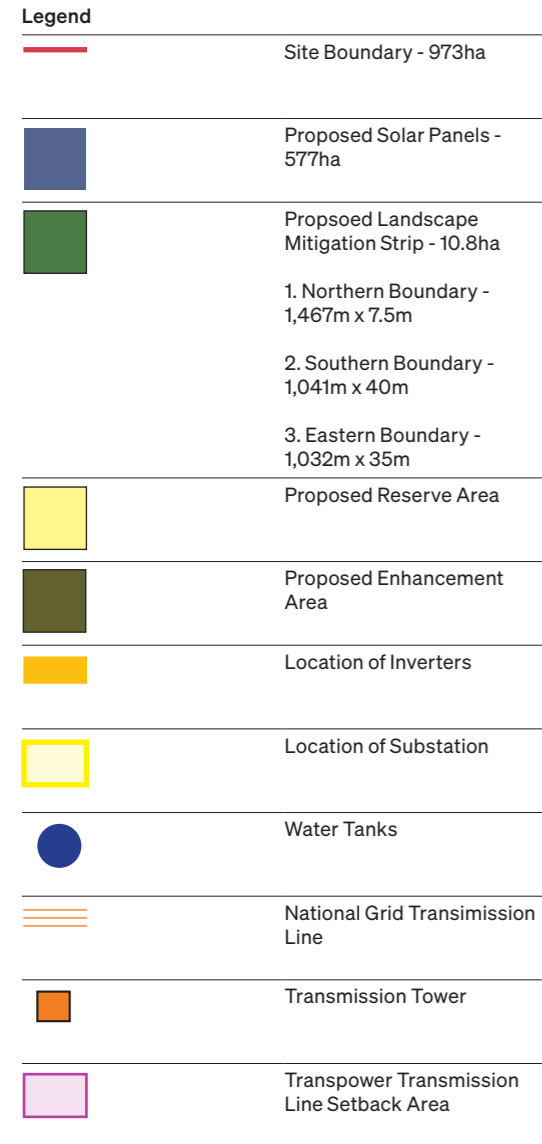
**2.5 Scientifically robust monitoring of potential edge effects on the vegetation community on the terrace adjacent to the property where landscape screening planting**

**2.6 Russell lupin is included as a weed search and control target**

The final three recommendations are not specifically landscape related, and are responded to in Mr Roland Payne's response.



# Proposed Landscape Mitigation Plan

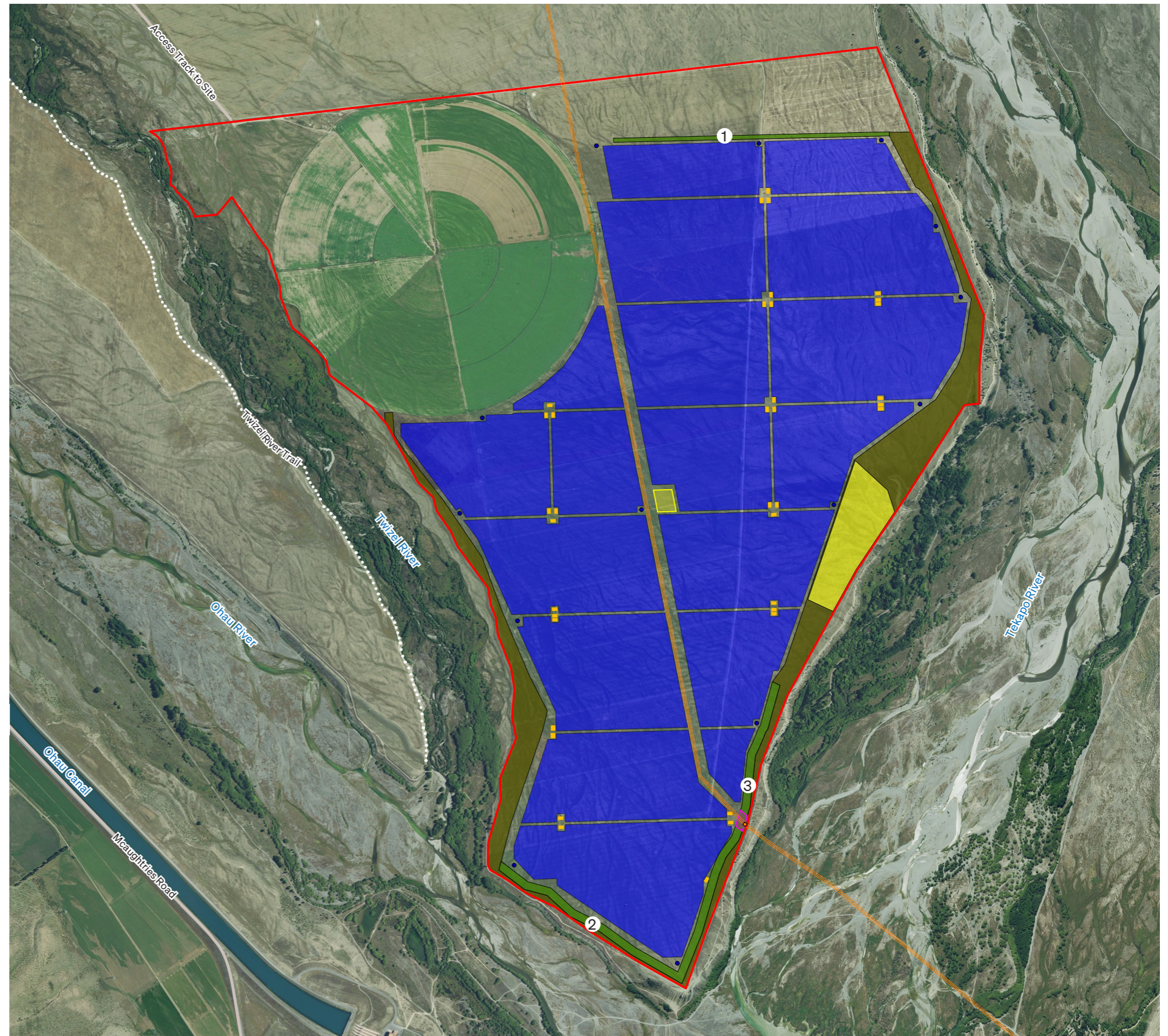


**Note**

- A. The proposed plant species within 12m either side of the Transpower Transmission Line's centreline will have a mature height of no more than 3m. Refer to Landscape Mitigation Plant Palette.
- B. The proposed plants within the Transpower Transmission Line Setback Area must be situated so when they are mature, they cannot fall and land within 4m of the transmission line. i.e. a 3m tall plant shall be planted 7m from the transmission.
- C. All plants will be setback 12m from the Transmission Tower.

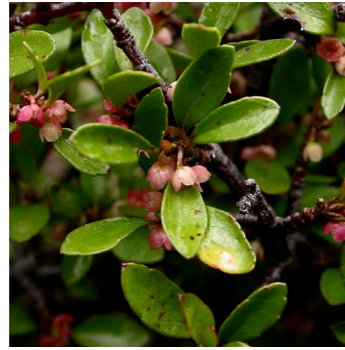


Scale 1:5,000 @ A3



# Landscape Mitigation Plant Palette

## Native Boundary Plants



**Aristotelia fruticosa**  
Mountain Wineberry  
Mature height: 5- 9m



**Coprosma intertexta**  
Tumbledown Coprosma  
Mature height: 5m



**Coprosoma propinqua**  
Mingimingi  
Mature height: 3m  
Not threatened



**Coprosma rigida**  
Rigid Coprosma  
Mature height: 4m



**Coprosma virescens**  
Mikimiki  
Mature height: 3m



**Corokia cotoneaster**  
Wire-Netting Bush  
Mature height: 3m  
Not Threatened



**Discaria toumatou**  
Matagouri  
Mature height: 4m  
Not Threatened



**Leptospermum scoparium**  
Manuka  
Mature height: 4m



**Olearia odorata**  
Scented tree daisy  
Mature height: 6m  
At Risk - Declining



**Phyllocladus alpinus**  
Mountain Celery Pine  
Mature height: 6m

## Native Boundary Plants as per Note A



**Carmichaelia kirkii**  
Kirk's Broom  
Mature height: 2m



**Carmichaelia petriei**  
Petrie's Broom  
Mature height: 2m  
At Risk - Declining



**Ozothamnus leptophyllus**  
Cottonwood  
Mature height: 2m

ROUGH MILNE MITCHELL  
LANDSCAPE ARCHITECTS

**Christchurch**  
Level Two, 69 Cambridge Terrace  
Christchurch 8013  
PO Box 3764 Christchurch 8140

info@rmmla.co.nz  
+64 3 366 3268

**Auckland**  
Level 12, Suite 6  
Southern Cross Building  
59 - 67 High Street, Auckland 1010

info@rmmla.co.nz  
+64 21 244 8630

**Nelson**  
116 Hardy Street  
Nelson 7010

info@rmmla.co.nz  
+64 27 250 0500

**Dunedin**  
42 Stuart Street, Dunedin 9054

info@rmmla.co.nz  
+64 3 477 2030

**Wānaka**  
Level One, 24 Dungarvon Street,  
Wānaka 9305  
PO Box 349, Wānaka 9343

info@rmmla.co.nz  
+64 3 974 7940

**RMML**

rmmla.co.nz