



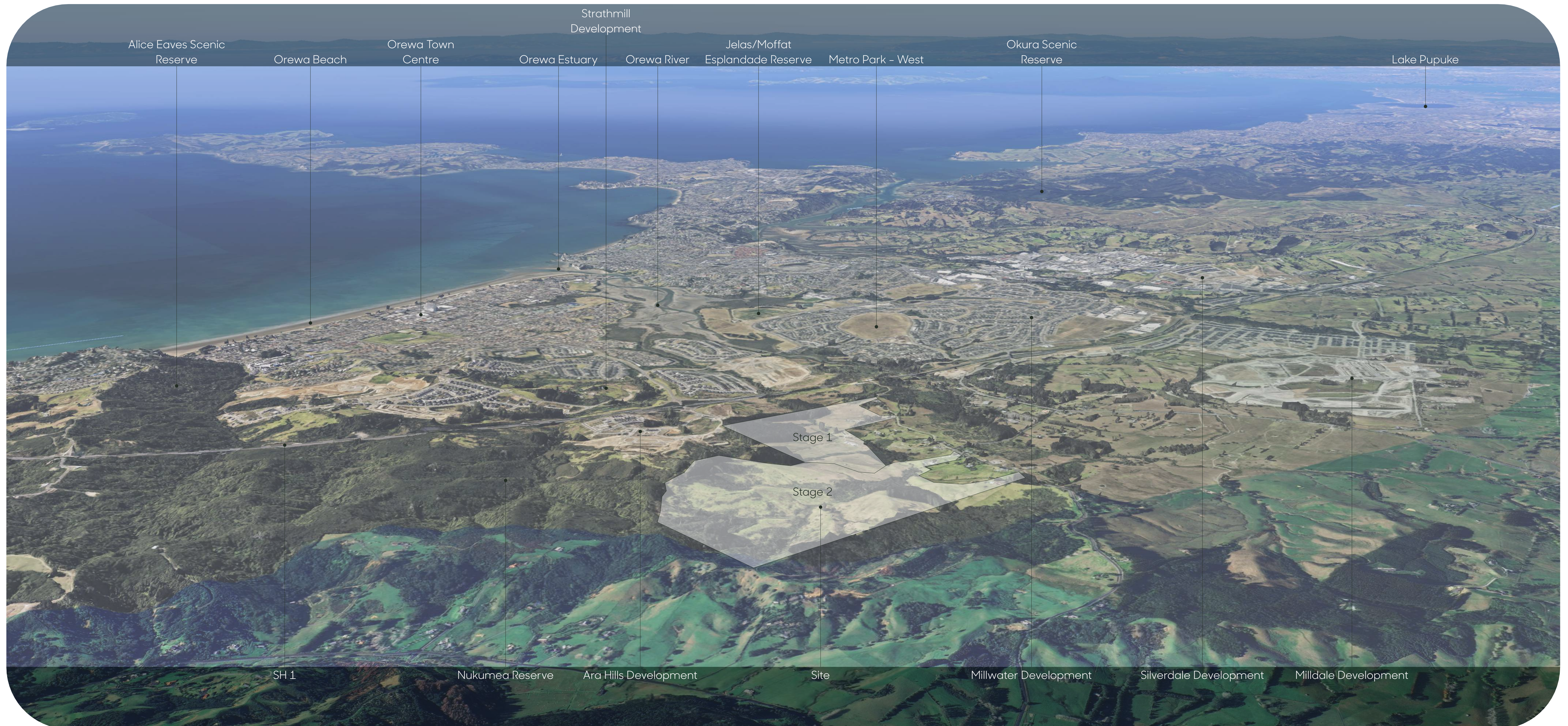
Fast Track Application Landscape Package for

Vineway Limited

Delmore, Upper Orewa, Auckland

Drawing Number:	Drawing Description:	Drawing Issue Date:	Drawing Number:	Drawing Description:	Drawing Issue Date:
2180/01	- Site Context & Local Character	03/07/2025	2180/14	- Lot Plant Palette 2	03/07/2025
2180/02	- General Arrangement Landscape Plan	03/07/2025	2180/14B	- Lot Plant Palette 3	03/07/2025
2180/03	- Open Space Design Strategy	03/07/2025	2180/15	- Lot Hardscape Schedule & Hardscape Palette	03/07/2025
2180/04	- Street Tree Plan 1 (Stage 2)	03/07/2025	2180/16	- Lot Fencing Schedule & Fencing Palette 1	03/07/2025
2180/05	- Street Tree Plan 2 (Stage 1 & 2)	03/07/2025	2180/17	- Lot Fencing Schedule & Fencing Palette 2	03/07/2025
2180/06	- Street Tree Plan 3 (Stage 1)	03/07/2025	2180/18	- Typical Retaining Wall Sections	03/07/2025
2180/07	- Revegetation Plan 1 (Stage 2)	03/07/2025	2180/19-26-	Stage 1 Lot Design Landscape Plan Part 1-8	03/07/2025
2180/08	- Revegetation Plan 2 (Stage 1 & 2)	03/07/2025	2180/27-40-	Stage 2 Lot Design Landscape Plan Part 1-14	03/07/2025
2180/09	- Revegetation Plan 3 (Stage 1)	03/07/2025	2180/41	- Planting Details 1	03/07/2025
2180/10	- Revegetation Plant Palette 1	03/07/2025	2180/42	- Planting Details 2	03/07/2025
2180/11	- Revegetation Plant Palette 2	03/07/2025	2180/43	- Retaining Wall Plan 1 (Stage 2)	03/07/2025
2180/12	- Private Lot Design Strategy	03/07/2025	2180/44	- Retaining Wall Plan 2 (Stage 1 & 2)	03/07/2025
2180/13	- Lot Planting Schedule & Plant Palette 1	03/07/2025	2180/45	- Retaining Wall Plan 3 (Stage 1)	03/07/2025

greenwoodassociates.co.nz



View from Russell Road looking towards north from southeast corner of the site



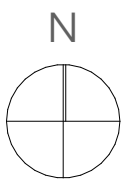
View from Upper Orewa Road looking towards north from the southwest corner of the site



3D view looking towards southeast of the site from northwest



3D view looking towards west of the site from east



DELMORE – OPEN SPACE DESIGN STRATEGY

The site is located to the west of both SH 1 and Orewa, approximately a 5-minute drive from Grand Drive SH1 off ramp. A series of rural and rural-residential properties are situated to the west and south of the site. The northern and western parts of the site extend into Nukumea Reserve which is managed by DOC.

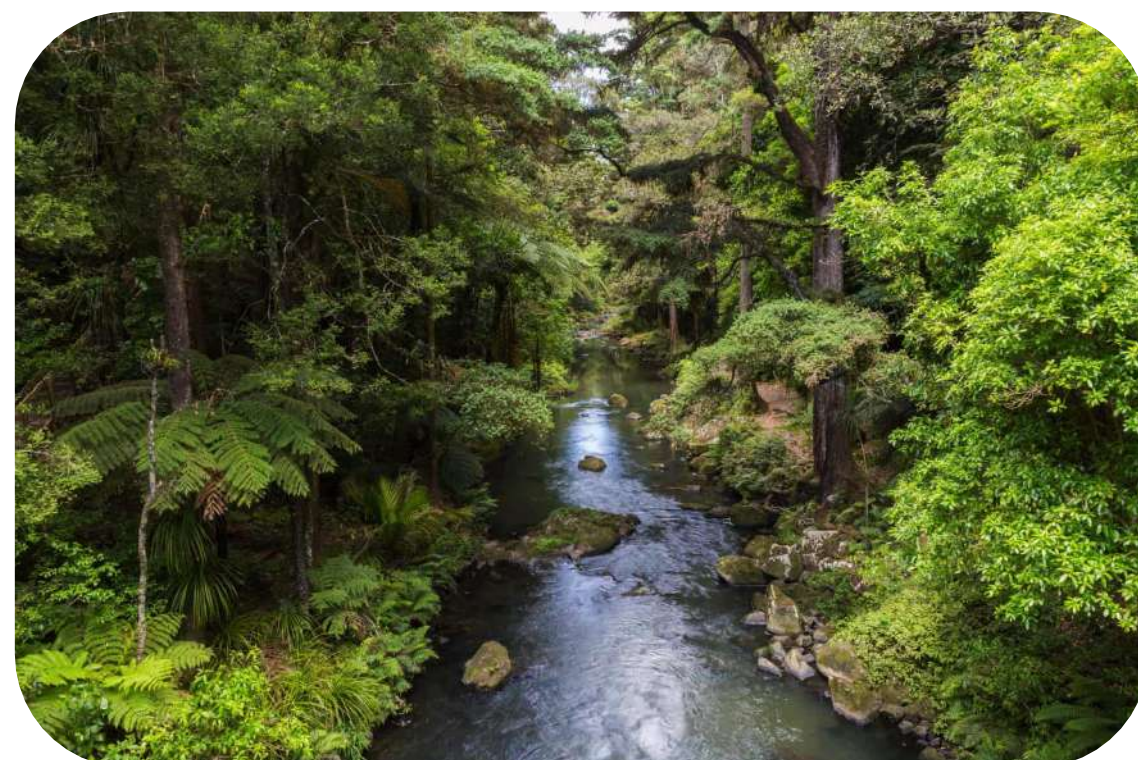
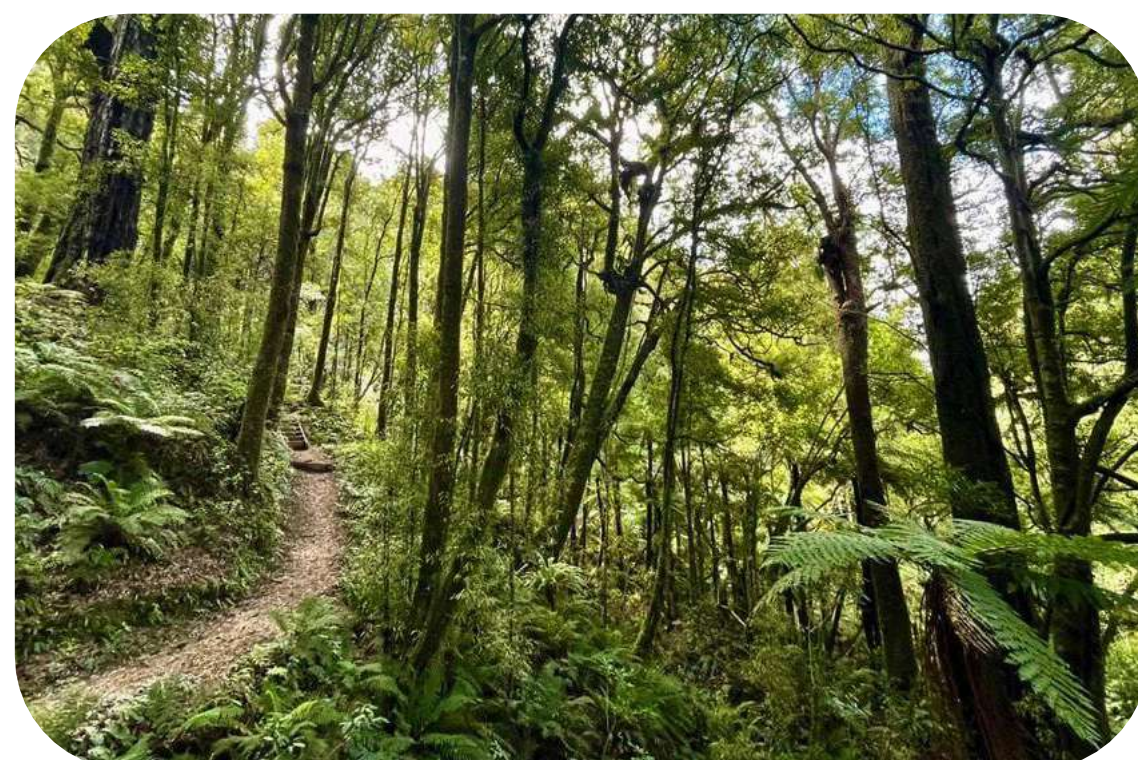
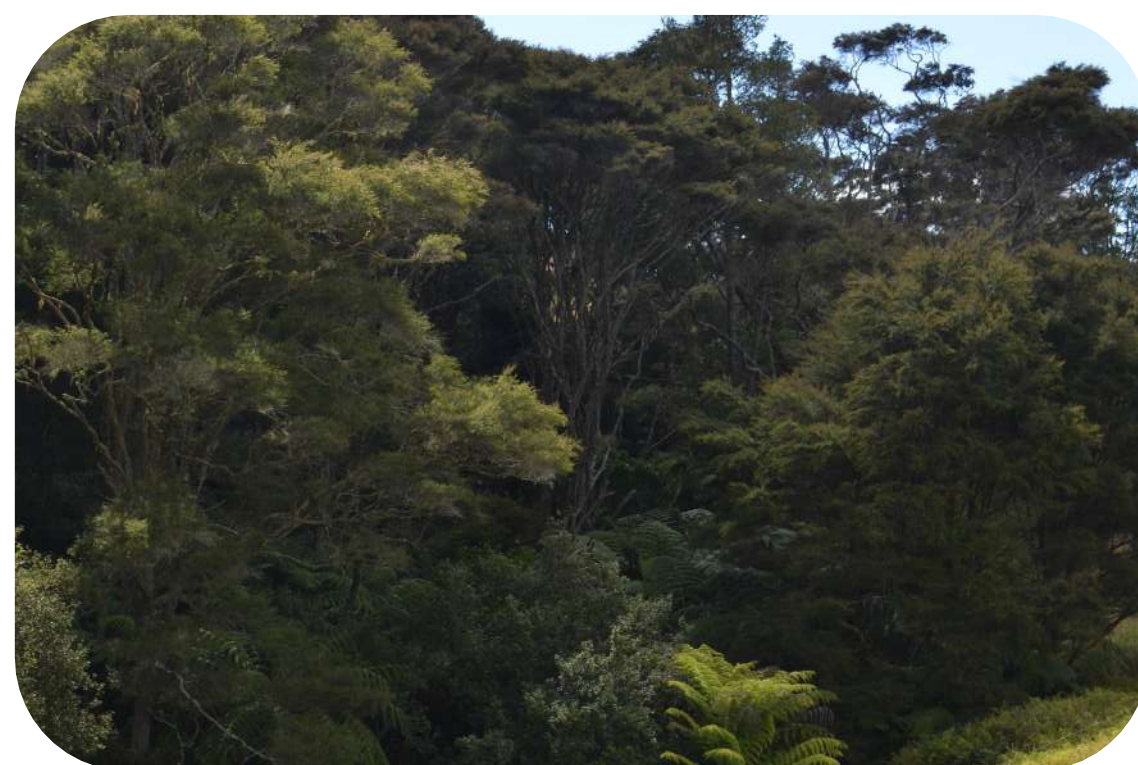
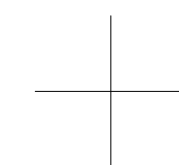
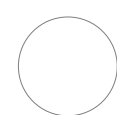
In recent years, several established and under-construction residential developments have emerged to the south and east of the site, demonstrating a trend of urbanisation in the area..

The development spans across scenic farmland with pockets of native bush and streams. These features give the site a natural character, which becomes a key design driver to maintain and enhance throughout the design process.

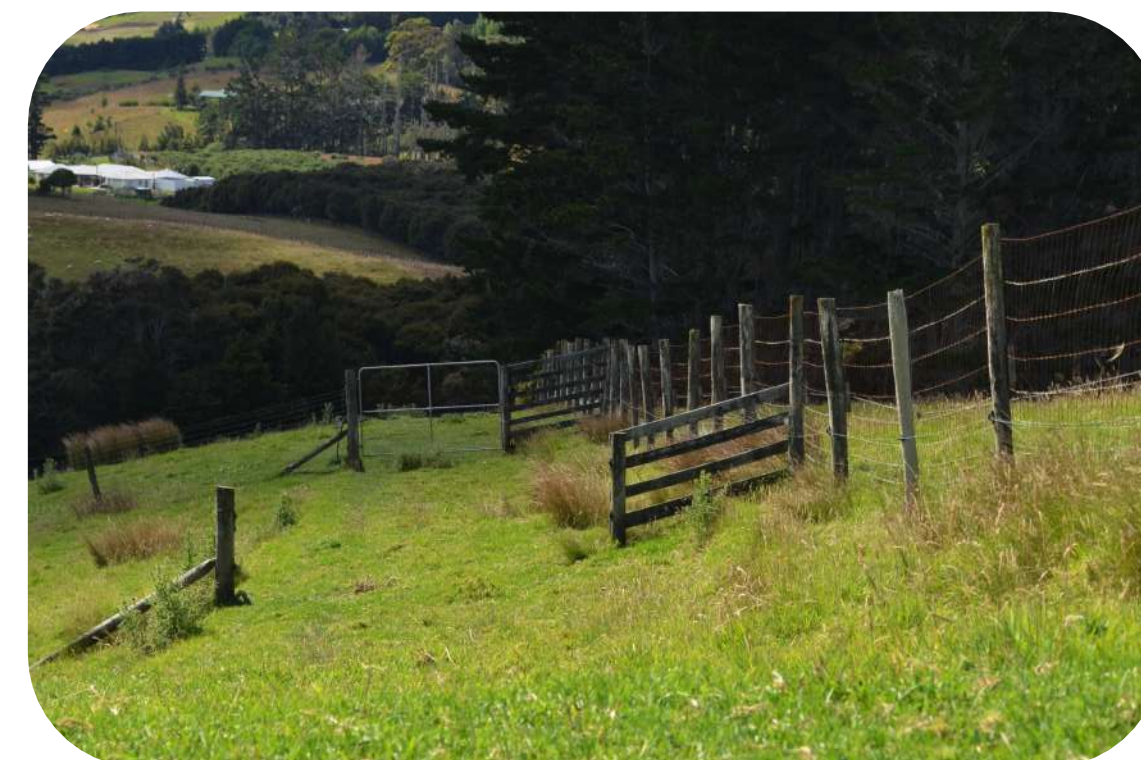
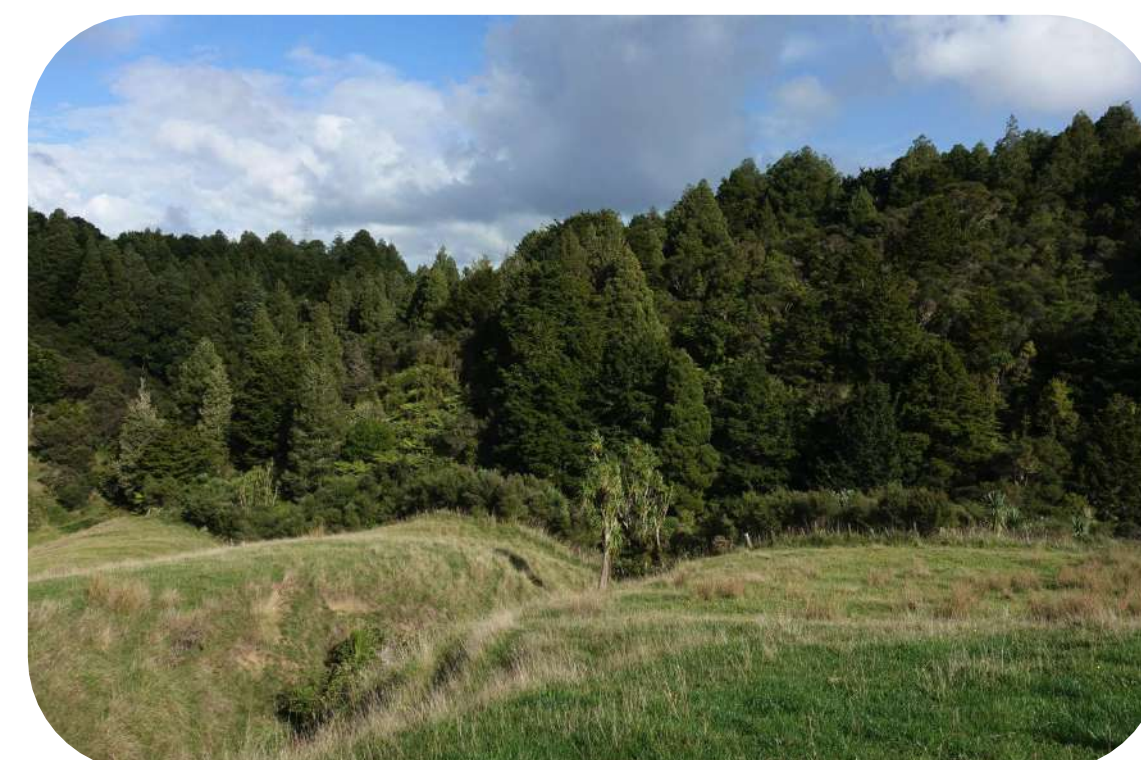
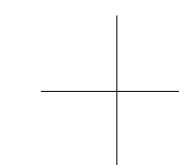
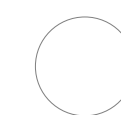
Due to the rolling terrain, large portions of the site have been proposed to native revegetation. A network of walking trails and lookouts have been identified throughout the site. Particularly up the site interfaces with Nukumea Reserve. This network also connects up a series of existing watercourses and streams within gullies across the site to support a walkable and cyclable community, providing recreation opportunities and access to nature throughout the development.

Native planting strategies are employed for street and open space landscape design to respond to the existing surrounding environment. These will help protect and enhance local flora and fauna habitats and biodiversity, and also contribute to the restoration of the wider blue-green networks.

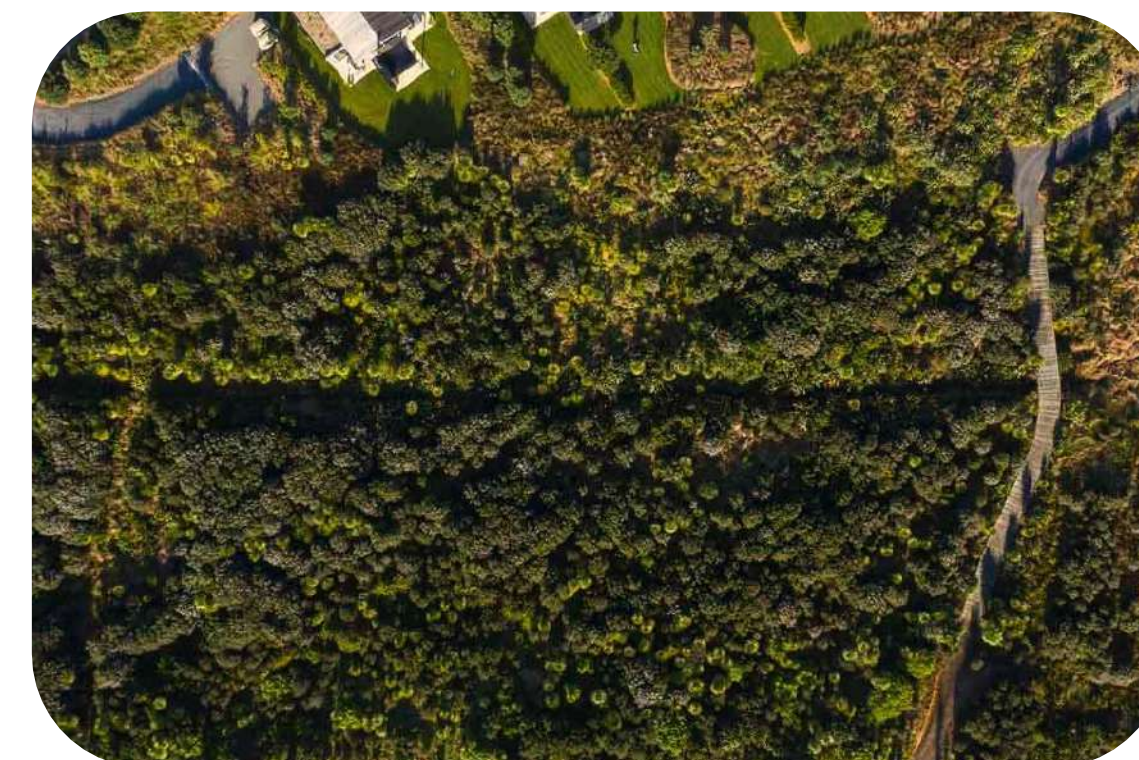
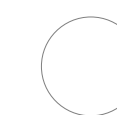
NATURE



RURAL

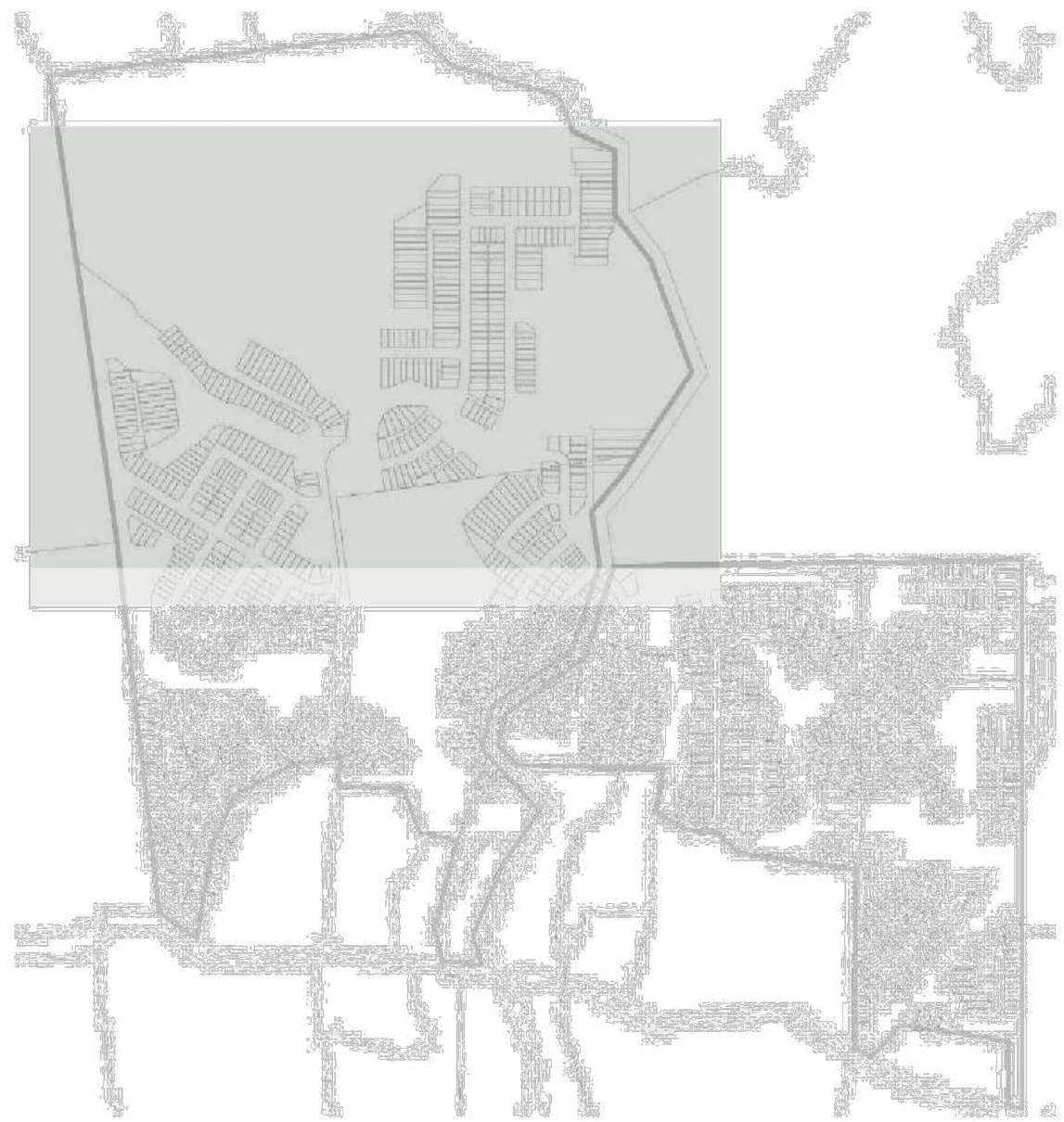


COMMUNITY





NUKUMEA SCENIC RESERVE



- AE - tītōki
- BR - tairere
- BT - tawa
- DS - kohekohe
- MR - māhoe
- NL - white maire
- TO - tōtara
- VL - pūriri



Vitex lucens



Podocarpus totara



Dysoxylum spectabile



Melicytus ramiflorus

Code	Botanical Name	Common Name	Grade	Height 5 years	Mature Height	Mature Width
AE	<i>Alectryon excelsus</i>	tītōki	160L	4.0m	6.0m	4.0m
BR	<i>Beilschmiedia tararua</i>	tairere	45L	4.0m	10m	6.0m
BT	<i>Beilschmiedia tawa</i>	tawa	45L	4.0m	10m	6.0m
DS	<i>Dysoxylum spectabile</i>	kohekohe	45L	4.0m	10m	4.0m
MR	<i>Melicytus ramiflorus</i>	māhoe	45L	3.0m	10m	4.0m
NL	<i>Nestegis lanceolata</i>	white maire	45L	3.5m	20m	4.0m
TO	<i>Podocarpus totara</i>	tōtara	45L	2.0m	15m	6.0m
VL	<i>Vitex lucens</i>	pūriri	45L	4.0m	20m	6.0m

Notes: All specimens to be eco-sourced from local nurseries and meet AS2303:2018 tree stock for landscape use

NOTE: ROOT BARRIER TO BE PROVIDED WHERE THERE ARE POTENTIAL CLASHES WITH CIVIL INFRASTRUCTURE



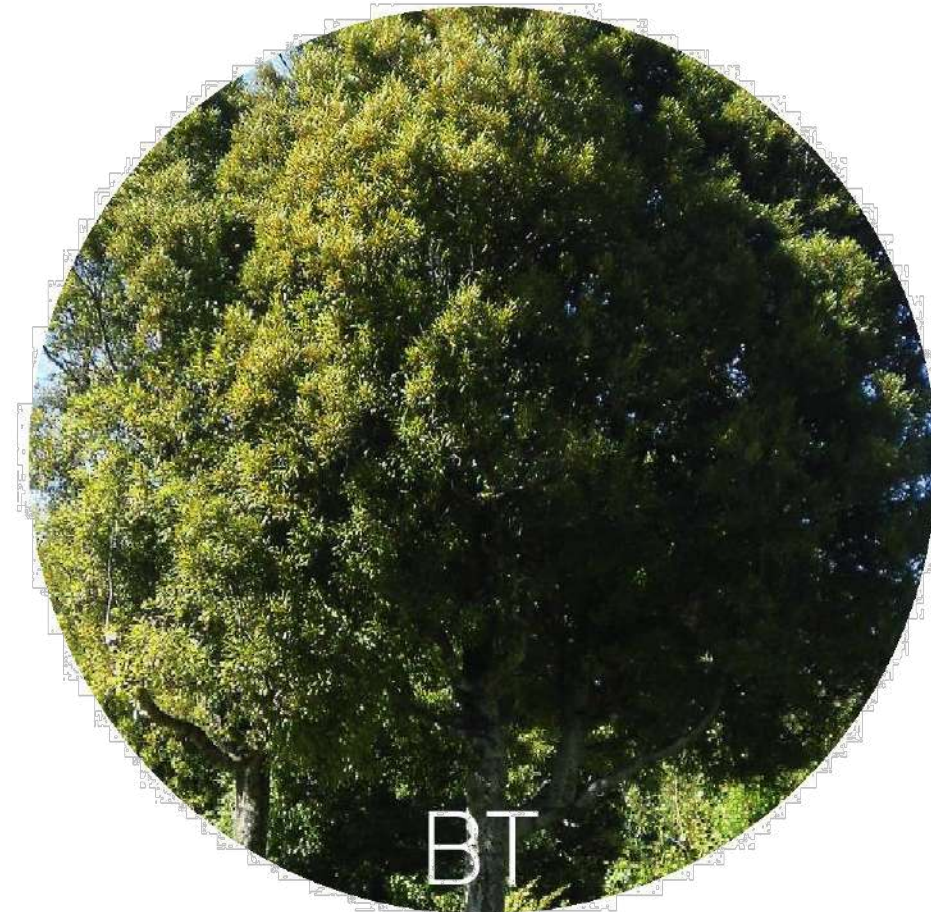
Alectryon excelsus



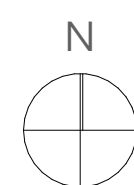
Beilschmiedia tararua

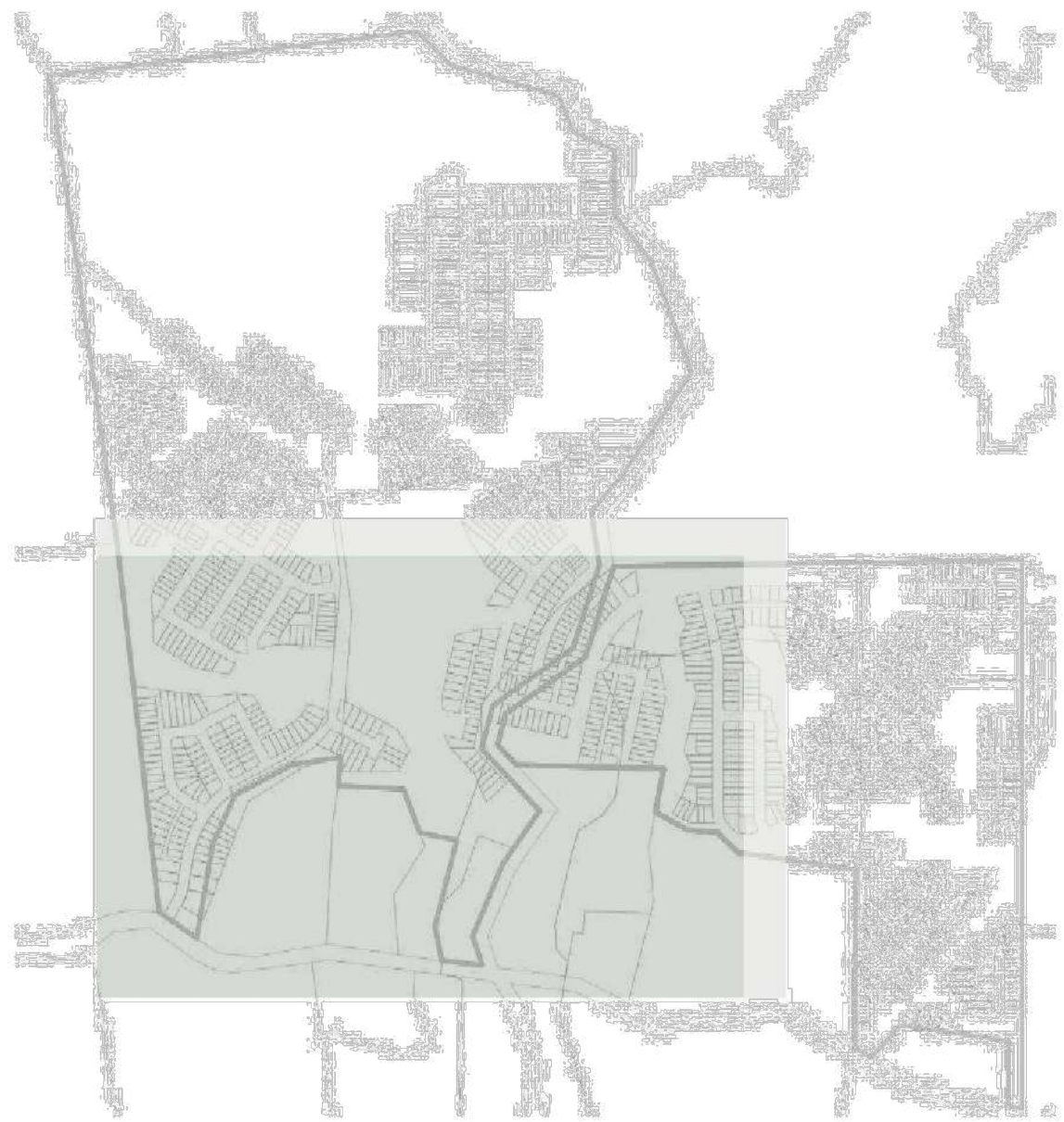


Nestegis lanceolata



Beilschmiedia tawa





- AE - titoki
- BR - tairere
- BT - tawa
- DS - kohekohe
- MR - māhoe
- NL - white maire
- TO - tōtara
- VL - pūriri

Code	Botanical Name	Common Name	Grade	Height 5 years	Mature Height	Mature Width
AE	<i>Alectryon excelsus</i>	titoki	160L	4.0m	6.0m	4.0m
BR	<i>Beilschmiedia tararue</i>	tairere	45L	4.0m	10m	6.0m
BT	<i>Beilschmiedia tawa</i>	tawa	45L	4.0m	10m	6.0m
DS	<i>Dysoxylum spectabile</i>	kohekohe	45L	4.0m	10m	4.0m
MR	<i>Melicytus ramiflorus</i>	māhoe	45L	3.0m	10m	4.0m
NL	<i>Nestegis lanceolata</i>	white maire	45L	3.5m	20m	4.0m
TO	<i>Podocarpus totara</i>	tōtara	45L	2.0m	15m	6.0m
VL	<i>Vitex lucens</i>	pūriri	45L	4.0m	20m	6.0m

Notes: All specimens to be eco-sourced from local nurseries and meet AS2303:2018 tree stock for landscape use

NOTE: ROOT BARRIER TO BE PROVIDED WHERE THERE ARE POTENTIAL CLASHES WITH CIVIL INFRASTRUCTURE



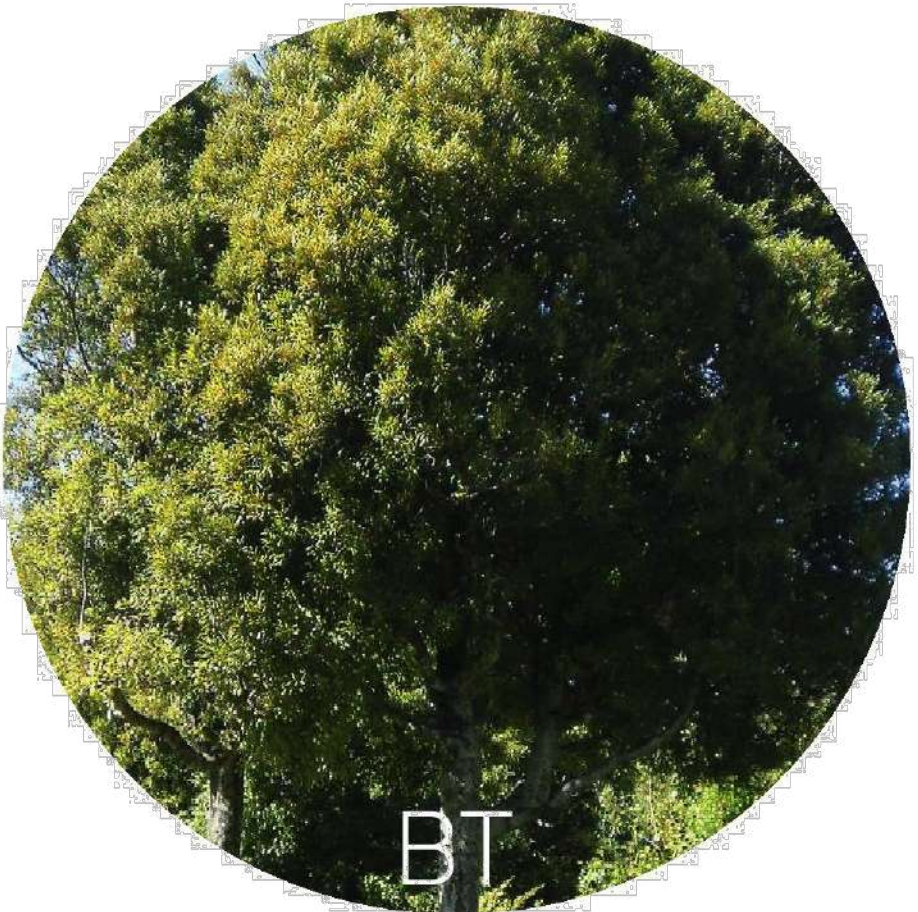
Alectryon excelsus



Beilschmiedia tararue



Nestegis lanceolata



Beilschmiedia tawa



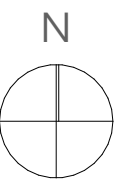
Vitex lucens

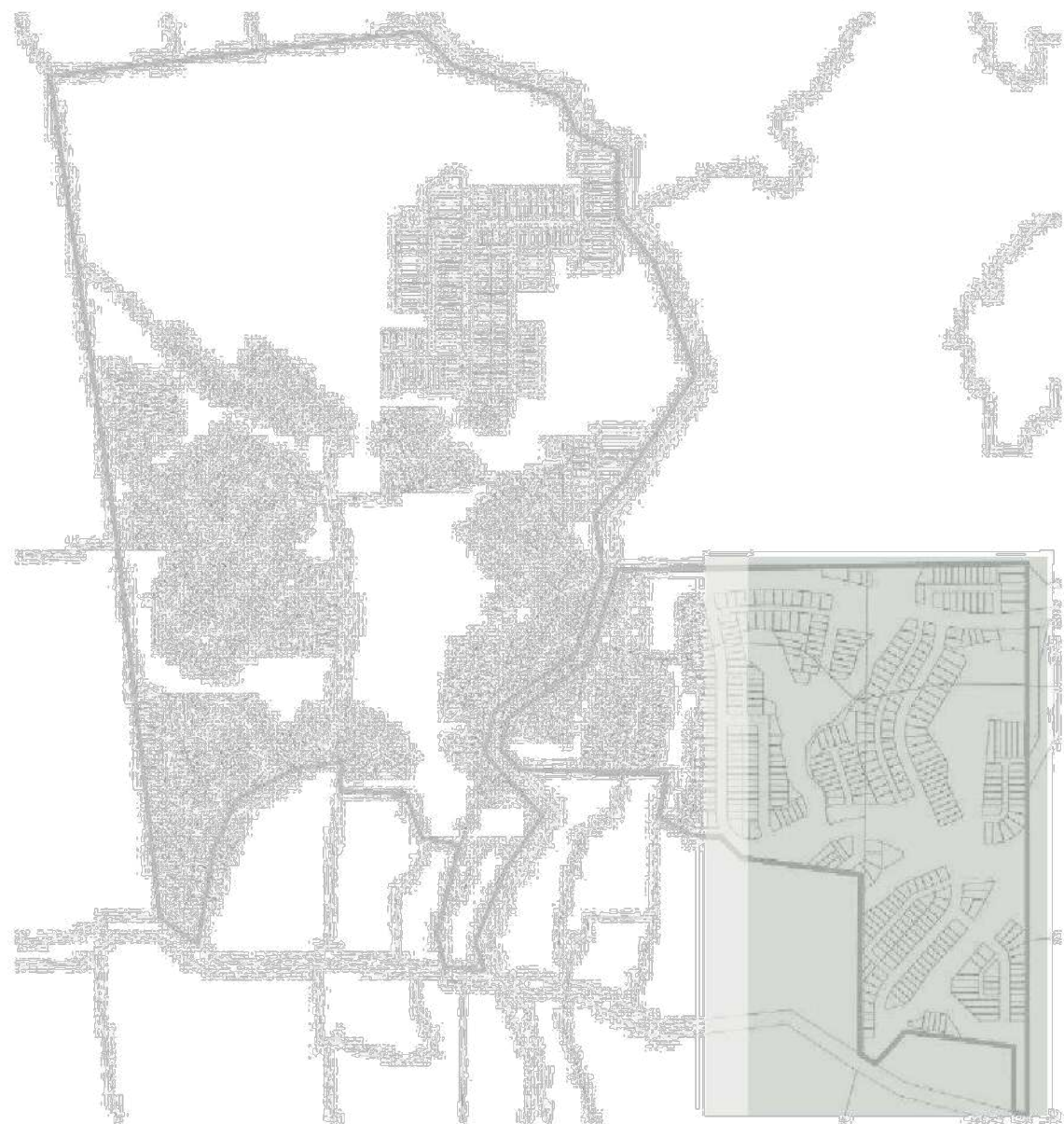
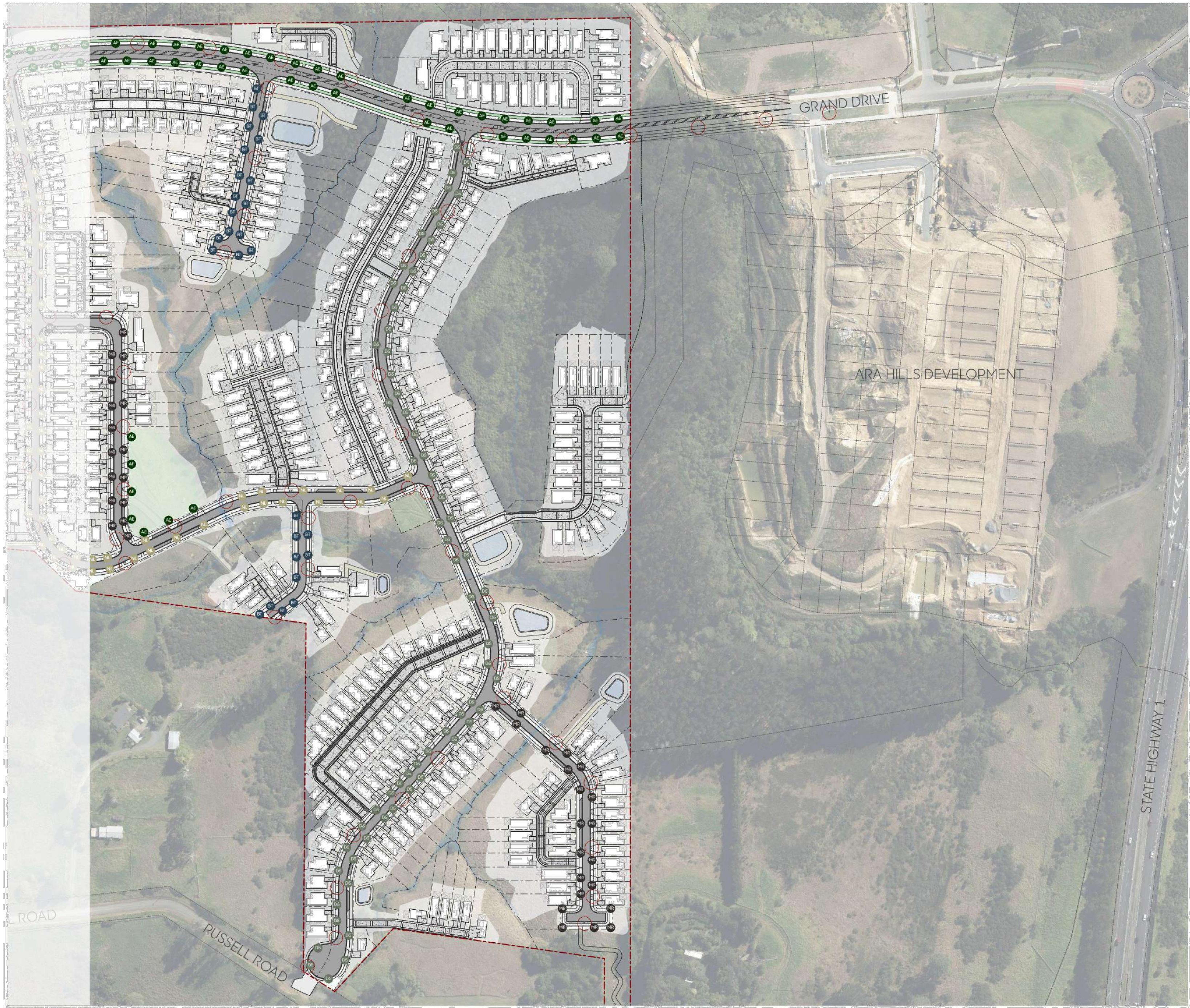


Dysoxylum spectabile



Melicytus ramiflorus



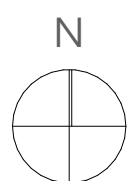


- AE - titoki
- BR - tairere
- BT - tawa
- DS - kohekohe
- MR - māhoe
- NL - white maire
- TO - tōtara
- VL - pūriri

Client
Vineway Limited

Project
Delmore, Upper Orewa, Auckland

Drawing
2180/06 Street Tree Plan 3 (Stage 1)



Scale
1:2000@A1
1:4000@A3

Issue Date
03/07/2025
Issue
FTA Rev B RC

Drawn
TX
Checked
MB



Code	Botanical Name	Common Name	Grade	Height 5 years	Mature Height	Mature Width
AE	<i>Alcorno excelsus</i>	titoki	1.60L	4.0m	6.0m	4.0m
BR	<i>Beilschmiedia tairere</i>	tairere	45L	4.0m	10m	6.0m
BT	<i>Beilschmiedia tawa</i>	tawa	45L	4.0m	10m	6.0m
DS	<i>Dysoxylum spectabile</i>	kohekohe	45L	4.0m	10m	4.0m
MR	<i>Melicytus ramiflorus</i>	māhoe	45L	3.0m	10m	4.0m
NL	<i>Nestegis lanceolata</i>	white maire	45L	3.5m	20m	4.0m
TO	<i>Podocarpus totara</i>	tōtara	45L	2.0m	15m	6.0m
VL	<i>Vitex lucens</i>	pūriri	45L	4.0m	20m	6.0m

Notes: All specimens to be eco-sourced from local nurseries and meet AS2303:2018 tree stock for landscape use

NOTE: ROOT BARRIER TO BE PROVIDED WHERE THERE ARE POTENTIAL CLASHES WITH CIVIL INFRASTRUCTURE



Alcorno excelsus



Nestegis lanceolata



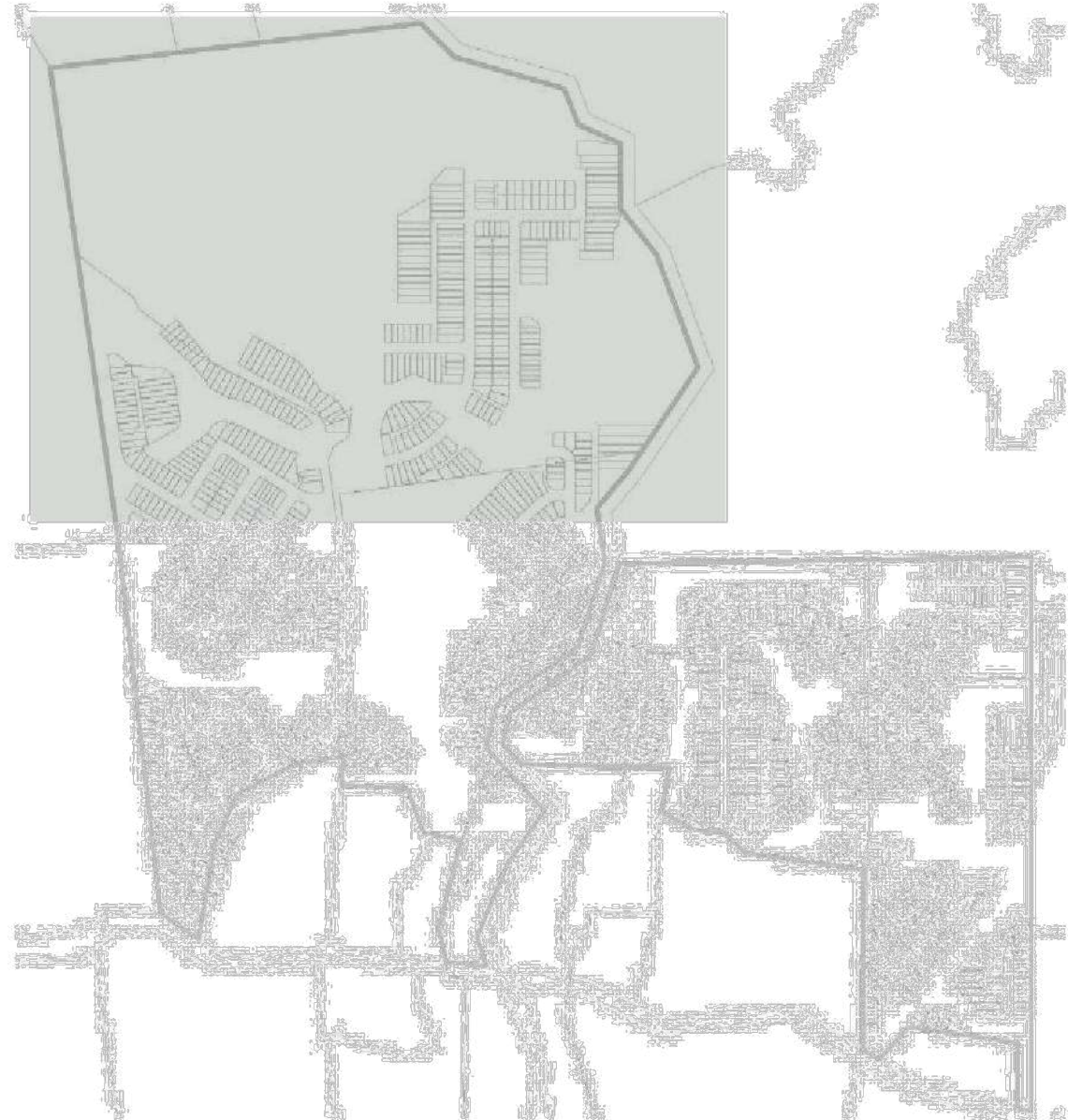
Beilschmiedia tairere



Dysoxylum spectabile



Melicytus ramiflorus



- Significant ecological area within site
- Existing watercourse/streams
- Existing wetlands
- Ecological consent notice areas
- New wetlands (offset planting)
- New covenant notice area (offset planting)
- Existing covenant notice area (offset planting)
- Additional offset area (offset planting)

- Native bush revegetation – Stage 1 Area: 30,529m² / Stage 2 Area: 138,012m²
- Upper riparian revegetation – Stage 1 Area: 15,525m² / Stage 2 Area: 35,787m²
- Lower riparian revegetation – Stage 1 Area: 14,406m² / Stage 2 Area: 39,748m²
- Revegetation within private lots – Stage 1 Area: 13,763m² / Stage 2 Area: 37,337m²
- Stormwater pond edge revegetation – Stage 1 Area: 1,441m² / Stage 2 Area: 1,654m²
- Wetland revegetation – Stage 1 Area: 1,441m² / Stage 2 Area: 1,654m²
- Stormwater ponds
- Open recreation space
- Access paths
- Recreation trail network

Code	Botanical Name	Common Name	Grade	Spacing
BM Native bush revegetation planting mix*				
1%	<i>Alectryon excelsus</i>	maki	2L	1500mm
5%	<i>Asaphila tricolor</i>	silver fern	1L	1500mm
2%	<i>Astela solandri</i>	kōwharawhara	1L	1500mm
2%	<i>Beilschmiedia tarairi</i>	tarairi	2L	1500mm
1%	<i>Beilschmiedia tawa</i>	tawa	2L	1500mm
5%	<i>Carex banksiana</i>	fine-leaved carex	1L	1500mm
2%	<i>Carex dissita</i>	forest sedge	1L	1500mm
5%	<i>Caprosma robusta</i>	karama	1L	1500mm
10%	<i>Cordyline australis</i>	tī kōkua	1L	1500mm
2%	<i>Corynocarpus laevigatus</i>	karaka	2L	1500mm
2%	<i>Dacrydium dacrydoides</i>	kahikatea	2L	1500mm
2%	<i>Dacrydium cupressinum</i>	rimu	2L	1500mm
1%	<i>Dysoxylum spectabile</i>	kohekohe	2L	1500mm
5%	<i>Grisebina lucida</i>	akapuka	1L	1500mm
1%	<i>Knightia excelsa</i>	rewarewa	2L	1500mm
5%	<i>Kunzea robusta</i>	kanuka	1L	1500mm
5%	<i>Laurelia novae-zelandiae</i>	pukatea	1L	1500mm
10%	<i>Leptospermum scoparium</i>	mānuka	1L	1500mm
5%	<i>Melkytus macrophyllus</i>	large-leaved māhoe	1L	1500mm
2%	<i>Merolabena avenacea</i>	bush rice grass	1L	1500mm
5%	<i>Myrsine australis</i>	red māpau	1L	1500mm
1%	<i>Nestegis lanceolata</i>	white maire	2L	1500mm
2%	<i>Olearia rani</i>	heketa	1L	1500mm
1%	<i>Pectinopitys ferruginea</i>	mira	2L	1500mm
1%	<i>Phyllocladus trichomanoides</i>	tānekaha	2L	1500mm
2%	<i>Pimelea longifolia</i>	long-leaved pimelea	1L	1500mm
5%	<i>Pittosporum tenuifolium</i>	kohukohu	1L	1500mm
1%	<i>Podocarpus totara</i>	tōtara	2L	1500mm
1%	<i>Prumnopitys taxifolia</i>	matai	2L	1500mm
5%	<i>Rhoplastylis sapida</i>	nikau	2L	1500mm
3%	<i>Vitex lucida</i>	puriri	2L	1500mm
UM Upper riparian planting mix*				
5%	<i>Asaphila tricolor</i>	silver fern	2L	1000mm
5%	<i>Asplenium oblongifolium</i>	huruwhenua	1L	1000mm
5%	<i>Austroderia fulvida</i>	toetoe	1L	1000mm
5%	<i>Carex banksiana</i>	fine-leaved carex	1L	1000mm
5%	<i>Carex lambertiana</i>	forest sedge	1L	1000mm
5%	<i>Carex virgata</i>	swamp sedge	1L	1000mm
10%	<i>Cordyline australis</i>	tī kōkua	2L	1000mm
5%	<i>Dicksonia squarrosa</i>	wheki	2L	1000mm
5%	<i>Juncus edgariae</i>	wiwi	1L	1000mm
5%	<i>Kunzea ericoides</i>	kanuka	1L	1000mm
1%	<i>Laurelia novae-zelandiae</i>	pukatea	2L	1000mm
10%	<i>Leptospermum scoparium</i>	mānuka	1L	1000mm
5%	<i>Leucopogon fasciculatus</i>	mingimingi	1L	1000mm
5%	<i>Macropiper excelsum</i>	kawakawa	1L	1000mm
1%	<i>Nestegis lanceolata</i>	white maire	2L	1000mm
5%	<i>Pakaua pennigera</i>	gully fern	1L	1000mm
8%	<i>Parablechnum novae-zelandiae</i>	kioko	1L	1000mm
10%	<i>Rhoplastylis sapida</i>	nikau	2L	1000mm
LM Lower riparian planting mix*				
30%	<i>Carex geminata</i>	rautahi	1L	1000mm
25%	<i>Carex virgata</i>	swamp sedge	1L	1000mm
30%	<i>Juncus edgariae</i>	wiwi	1L	1000mm
10%	<i>Cordyline australis</i>	tī kōkua	2L	1000mm
5%	<i>Laurelia novae-zelandiae</i>	pukatea	2L	1000mm
PM Lot revegetation planting mix*				
20%	<i>Macropiper excelsum</i>	kawakawa	1L	1000mm
50%	<i>Phormium tenax</i>	harakeke	1L	1000mm
5%	<i>Cordyline australis</i>	tī kōkua	2L	1000mm
5%	<i>Rhoplastylis sapida</i>	nikau	2L	1000mm
20%	<i>Caprosma robusta</i>	karamū	1L	1000mm
SM Stormwater pond edge planting mix*				
25%	<i>Apodasmia sinuata</i>	olai	1L	1000mm
25%	<i>Carex secta</i>	pūrei	1L	1000mm
25%	<i>Juncus edgariae</i>	wiwi	1L	1000mm
25%	<i>Typha orientalis</i>	raupō	1L	1000mm
WM Wetland planting mix*				
15%	<i>Machaeringa articulata</i>	jointed twig rush	1L	1000mm
15%	<i>Carex secta</i>	pūrei	1L	1000mm
15%	<i>Schoenoplectus tobernaemontani</i>	kuawa	1L	1000mm
10%	<i>Eleocharis sphacelata</i>	kuta	1L	1000mm
15%	<i>Cyperus ustulatus</i>	plant umbrella sedge	1L	1000mm
10%	<i>Carex geminata</i>	rautahi	1L	1000mm
10%	<i>Carex virgata</i>	swamp sedge	1L	1000mm
10%	<i>Eleocharis acuta</i>	sharp spike sedge	1L	1000mm

Notes: * Except tree species, planting mixes to be planted in species groups of 3 min. for small garden (<9m²) and 5 min. for larger gardens (>9m²)
All plant species to be sourced from local nurseries
Plant selection is based on achieving target ecosystem type W11
Revegetation planting mix to be planted in two stages. The first stage with colonising species and the second stage with enrichment species, with timings TBD at EPA stage
All existing native bush to remain



Client
Vineway Limited

Project
Delmore, Upper Orewa, Auckland

Drawing
2180/07 Revegetation Plan 1 (Stage 2)

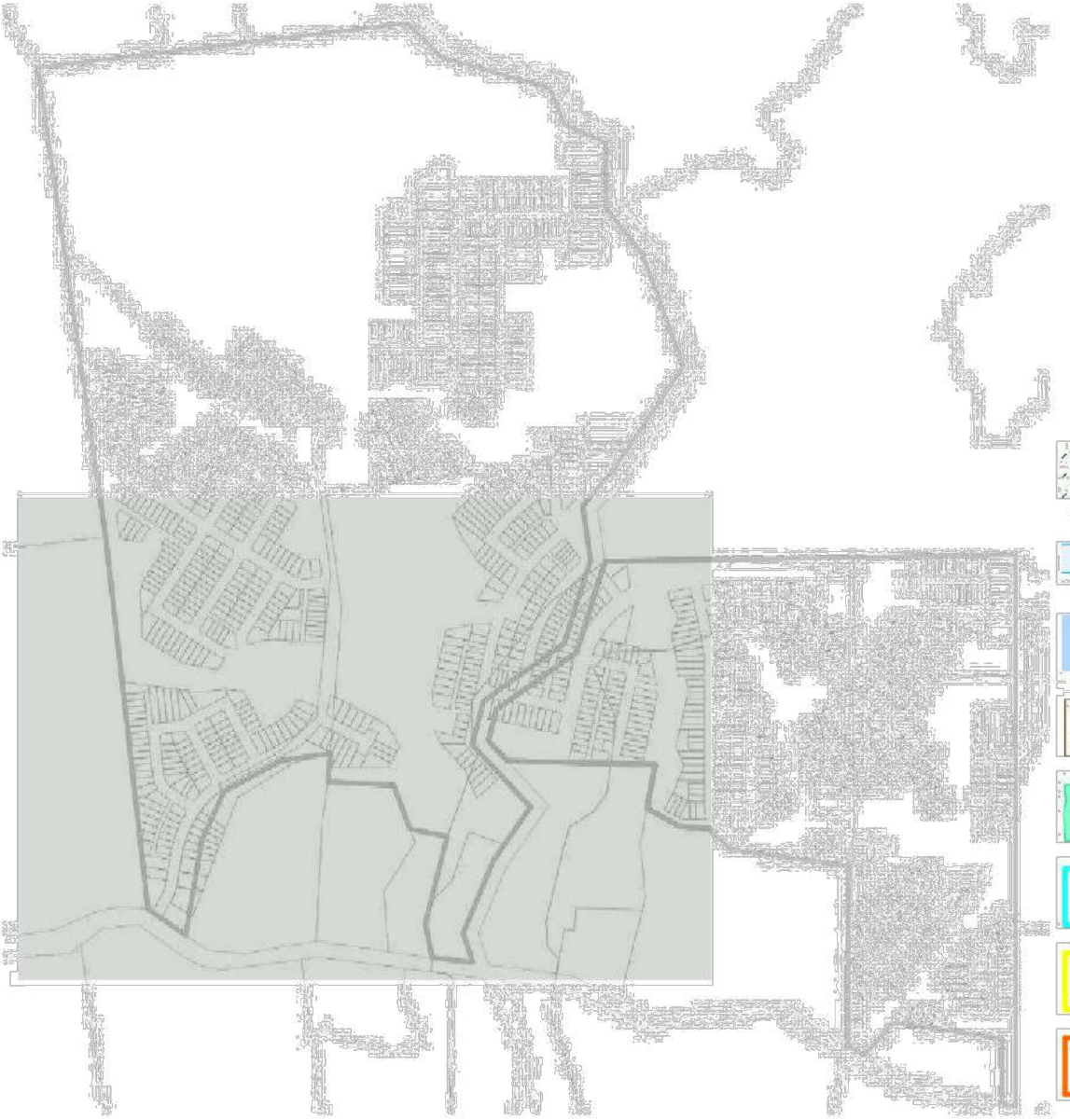


Scale
1:2000@A1
1:4000@A3

Issue Date
03/07/2025
Issue
FTA Rev B RC

Drawn
TX
Checked
MB





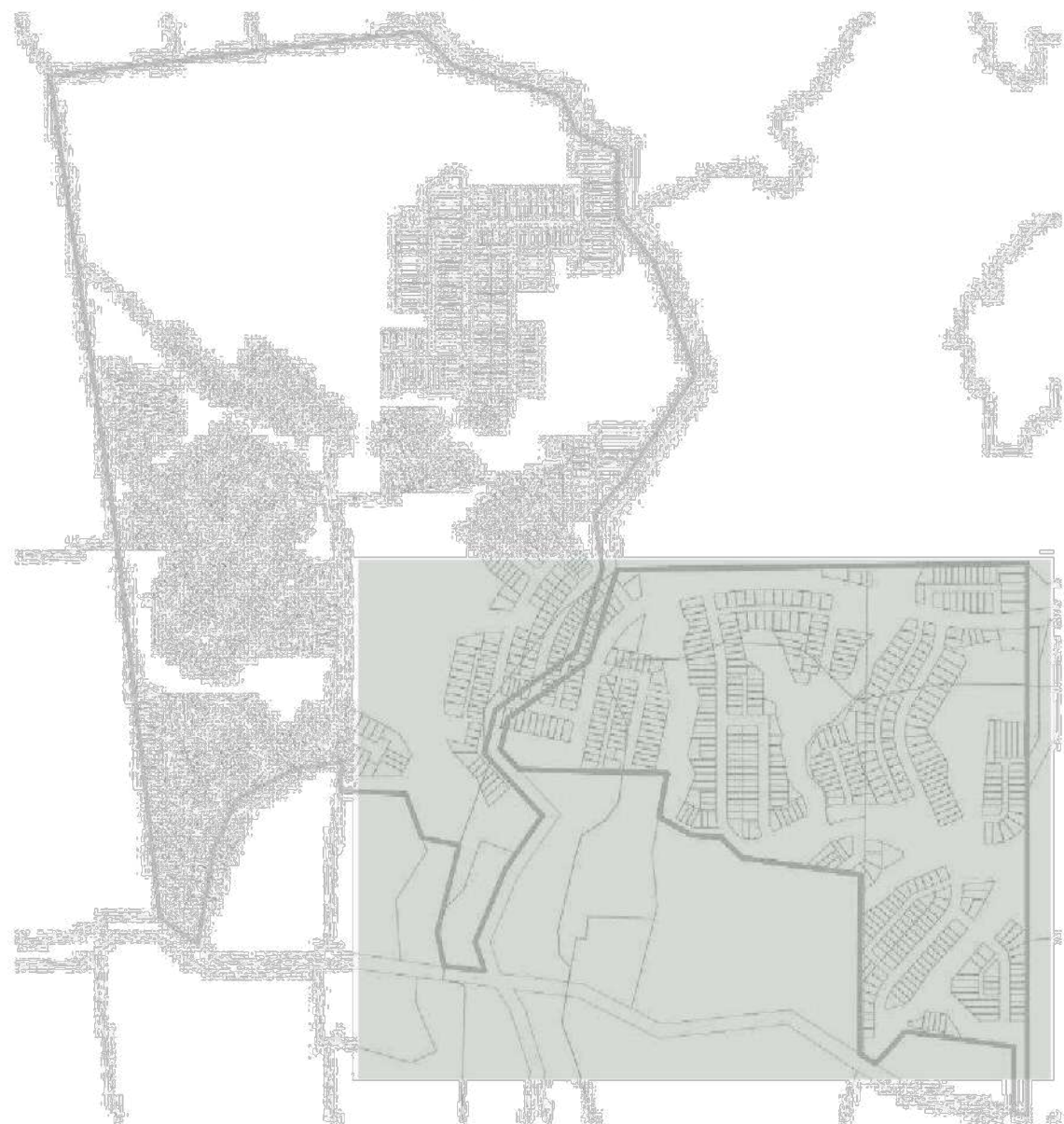
- Significant ecological area within site
- Existing watercourse/streams
- Existing wetlands
- Ecological consent notice areas
- New wetlands (offset planting)
- New covenant notice area (offset planting)
- Existing covenant notice area (offset planting)
- Additional offset area (offset planting)

- Native bush revegetation – Stage 1 Area: 30,529m² / Stage 2 Area: 138,012m²
- Upper riparian revegetation – Stage 1 Area: 15,525m² / Stage 2 Area: 35,787m²
- Lower riparian revegetation – Stage 1 Area: 14,406m² / Stage 2 Area: 39,748m²
- Revegetation within private lots – Stage 1 Area: 13,763m² / Stage 2 Area: 37,337m²
- Stormwater pond edge revegetation – Stage 1 Area: 1,441m² / Stage 2 Area: 1,654m²
- Wetland revegetation – Stage 1 Area: 1,441m² / Stage 2 Area: 1,654m²
- Stormwater ponds
- Open recreation space
- Access paths
- Recreation trail network

Code	Botanical Name	Common Name	Grade	Spacing
BM Native bush revegetation planting mix*				
1%	<i>Alectryon excelsus</i>	iroki	2L	1500mm
5%	<i>Asaphila tricolor</i>	silver fern	1L	1500mm
2%	<i>Astela solandri</i>	kōwharawhara	1L	1500mm
2%	<i>Beilschmiedia tarairi</i>	tarairi	2L	1500mm
1%	<i>Beilschmiedia tawa</i>	tawa	2L	1500mm
5%	<i>Carex banksiana</i>	fine-leaved carex	1L	1500mm
2%	<i>Carex dissita</i>	forest sedge	1L	1500mm
5%	<i>Caprosma robusta</i>	karamū	1L	1500mm
10%	<i>Cordyline australis</i>	tī kōuka	1L	1500mm
2%	<i>Corynocarpus laevigatus</i>	karaka	2L	1500mm
2%	<i>Dacrydium dacrydoides</i>	kahikatea	2L	1500mm
2%	<i>Dacrydium cupressinum</i>	rimu	2L	1500mm
1%	<i>Diospyllum spectabile</i>	kohekohe	1L	1500mm
5%	<i>Grisebina lucida</i>	akapuka	1L	1500mm
1%	<i>Knightia excelsa</i>	rewarewa	2L	1500mm
5%	<i>Kunzea robusta</i>	kanuka	1L	1500mm
5%	<i>Laurelia novae-zelandiae</i>	pukatea	1L	1500mm
10%	<i>Leptospermum scoparium</i>	manuka	1L	1500mm
5%	<i>Melkoytus macrophyllus</i>	large-leaved māhoe	1L	1500mm
2%	<i>Microbaena avenacea</i>	bush rice grass	1L	1500mm
5%	<i>Myrsine australis</i>	red māpau	1L	1500mm
1%	<i>Nestegis lanceolata</i>	white maire	2L	1500mm
2%	<i>Olearia rani</i>	heketa	1L	1500mm
1%	<i>Pectinoplys ferruginea</i>	mira	2L	1500mm
1%	<i>Phyllocladus trichomanoides</i>	tānekaha	2L	1500mm
2%	<i>Pimelea longifolia</i>	long-leaved pimelea	1L	1500mm
5%	<i>Pittosporum tenuifolium</i>	kohukohu	1L	1500mm
1%	<i>Podocarpus totara</i>	tōtara	2L	1500mm
1%	<i>Prumnopitys taxifolia</i>	mātā	2L	1500mm
5%	<i>Rhoplostylis sapida</i>	nikau	2L	1500mm
3%	<i>Vitex lucida</i>	pariri	2L	1500mm
UM Upper riparian planting mix*				
5%	<i>Asaphila tricolor</i>	silver fern	2L	1000mm
5%	<i>Asplenium oblongifolium</i>	huruwhenua	1L	1000mm
5%	<i>Austroderia fulvida</i>	toetoe	1L	1000mm
5%	<i>Carex banksiana</i>	fine-leaved carex	1L	1000mm
5%	<i>Carex lambertiana</i>	forest sedge	1L	1000mm
5%	<i>Carex virgata</i>	swamp sedge	1L	1000mm
10%	<i>Cordyline australis</i>	tī kōuka	2L	1000mm
5%	<i>Dicksonia squarrosa</i>	wheki	2L	1000mm
5%	<i>Juncus edgariae</i>	wiwi	1L	1000mm
5%	<i>Kunzea ericoides</i>	kanuka	1L	1000mm
1%	<i>Laurelia novae-zelandiae</i>	pukatea	2L	1000mm
10%	<i>Leptospermum scoparium</i>	manuka	1L	1000mm
5%	<i>Leucopogon fasciculatus</i>	mingimingi	1L	1000mm
5%	<i>Macropiper excelsum</i>	kawakawa	1L	1000mm
1%	<i>Nestegis lanceolata</i>	white maire	2L	1000mm
5%	<i>Pakaua pennigera</i>	gully fern	1L	1000mm
8%	<i>Parablechnum novae-zelandiae</i>	kioko	1L	1000mm
10%	<i>Rhoplostylis sapida</i>	nikau	2L	1000mm
LM Lower riparian planting mix*				
30%	<i>Carex geminata</i>	rouahi	1L	1000mm
25%	<i>Carex virgata</i>	swamp sedge	1L	1000mm
30%	<i>Juncus edgariae</i>	wiwi	1L	1000mm
10%	<i>Cordyline australis</i>	tī kōuka	2L	1000mm
5%	<i>Laurelia novae-zelandiae</i>	pukatea	2L	1000mm
PM Lot revegetation planting mix*				
20%	<i>Macropiper excelsum</i>	kawakawa	1L	1000mm
50%	<i>Phormium tenax</i>	harakeke	1L	1000mm
5%	<i>Cordyline australis</i>	tī kōuka	2L	1000mm
5%	<i>Rhoplostylis sapida</i>	nikau	2L	1000mm
20%	<i>Caprosma robusta</i>	karamū	1L	1000mm
SM Stormwater pond edge planting mix*				
25%	<i>Apodasmia sphaerica</i>	oiā	1L	1000mm
25%	<i>Carex secta</i>	pūrei	1L	1000mm
25%	<i>Juncus edgariae</i>	wiwi	1L	1000mm
25%	<i>Typha orientalis</i>	raupō	1L	1000mm
WM Wetland planting mix*				
15%	<i>Machaeringa articulata</i>	jointed twig rush	1L	1000mm
15%	<i>Carex secta</i>	pūrei	1L	1000mm
15%	<i>Schoenoplectus tobernaemontani</i>	kuawa	1L	1000mm
10%	<i>Eleocharis sphacelata</i>	kuta	1L	1000mm
15%	<i>Cyperus ustulatus</i>	plant umbrella sedge	1L	1000mm
10%	<i>Carex geminata</i>	rouahi	1L	1000mm
10%	<i>Carex virgata</i>	swamp sedge	1L	1000mm
10%	<i>Eleocharis acuta</i>	sharp spike sedge	1L	1000mm

Notes: *Except tree species, planting mixes to be planted in species groups of 3 min. for small garden (<9m²) and 5 min. for larger gardens (>9m²)
All plant species to be sourced from local nurseries
Plant selection is based on achieving target ecosystem type WET1
Revegetation planting mix to be planted in two stages. The first stage with colonising species and the second stage with enrichment species, with timings TBD at EPA stage
All existing native bush to remain





- Significant ecological area within site
- Existing watercourse/streams
- Existing wetlands
- Ecological consent notice areas
- New wetlands (offset planting)
- New covenant notice area (offset planting)
- Existing covenant notice area (offset planting)
- Additional offset area (offset planting)

- Native bush revegetation – Stage 1 Area: 30,529m² / Stage 2 Area: 138,012m²
- Upper riparian revegetation – Stage 1 Area: 15,525m² / Stage 2 Area: 35,787m²
- Lower riparian revegetation – Stage 1 Area: 14,406m² / Stage 2 Area: 39,748m²
- Revegetation within private lots – Stage 1 Area: 13,763m² / Stage 2 Area: 37,337m²
- Stormwater pond edge revegetation – Stage 1 Area: 1,441m² / Stage 2 Area: 1,654m²
- Wetland revegetation – Stage 1 Area: 1,441m² / Stage 2 Area: 1,654m²
- Stormwater ponds
- Open recreation space
- Access paths
- Recreation trail network

Code	Botanical Name	Common Name	Grade	Spacing
BM Native bush revegetation planting mix*				
1%	<i>Alectryon excelsus</i>	iroki	2L	1500mm
5%	<i>Alsophila tricolor</i>	silver fern	1L	1500mm
2%	<i>Astelia solandri</i>	kōwharawhara	1L	1500mm
2%	<i>Beilschmiedia tarairi</i>	tarairi	2L	1500mm
1%	<i>Beilschmiedia tawa</i>	tawa	2L	1500mm
5%	<i>Carex banksiana</i>	fine-leaved carex	1L	1500mm
2%	<i>Carex diisita</i>	forest sedge	1L	1500mm
5%	<i>Coprosma robusta</i>	karamū	1L	1500mm
10%	<i>Cordyline australis</i>	tī kouka	1L	1500mm
2%	<i>Corynocarpus laevigatus</i>	karaka	2L	1500mm
2%	<i>Dacrydium dacrydoides</i>	kahikatea	2L	1500mm
2%	<i>Dacrydium cupressinum</i>	rimu	2L	1500mm
1%	<i>Dysoxylum spectabile</i>	kohekohe	2L	1500mm
5%	<i>Grisebina lucida</i>	akapuika	1L	1500mm
1%	<i>Knightia excelsa</i>	rewarewa	2L	1500mm
5%	<i>Kunzea robusta</i>	kanuka	1L	1500mm
5%	<i>Laurelia novae-zelandiae</i>	pukatea	1L	1500mm
10%	<i>Leptospermum scoparium</i>	mānuka	1L	1500mm
5%	<i>Melkoytus macrophyllus</i>	large-leaved māhoe	1L	1500mm
2%	<i>Mitrocladus avenacea</i>	bush rice grass	1L	1500mm
5%	<i>Myrsine australis</i>	red māpou	1L	1500mm
1%	<i>Nestegis lanceolata</i>	white maire	2L	1500mm
2%	<i>Olearia rani</i>	heketa	1L	1500mm
1%	<i>Pectinopitys ferruginea</i>	mira	2L	1500mm
1%	<i>Phyllocladus trichomanoides</i>	tānekaha	2L	1500mm
2%	<i>Pimelea longifolia</i>	long-leaved pimelea	1L	1500mm
5%	<i>Pittosporum tenuifolium</i>	kohukohu	1L	1500mm
1%	<i>Podocarpus totara</i>	tōtara	2L	1500mm
1%	<i>Prumnopitys taxifolia</i>	matarī	2L	1500mm
5%	<i>Rhoplostylis sapida</i>	nikau	2L	1500mm
3%	<i>Vitex lucens</i>	pariri	2L	1500mm
UM Upper riparian planting mix*				
5%	<i>Alsophila tricolor</i>	silver fern	2L	1000mm
5%	<i>Asplenium oblongifolium</i>	huruwhenua	1L	1000mm
5%	<i>Austroderia fulvida</i>	toetoe	1L	1000mm
5%	<i>Carex banksiana</i>	fine-leaved carex	1L	1000mm
5%	<i>Carex lambertiana</i>	forest sedge	1L	1000mm
5%	<i>Carex virgata</i>	swamp sedge	1L	1000mm
10%	<i>Cordyline australis</i>	tī kouka	2L	1000mm
5%	<i>Dicksonia squarrosa</i>	wheki	2L	1000mm
5%	<i>Juncus edgariae</i>	wiwi	1L	1000mm
5%	<i>Kunzea ericoides</i>	kanuka	1L	1000mm
1%	<i>Laurelia novae-zelandiae</i>	pukatea	2L	1000mm
10%	<i>Leptospermum scoparium</i>	mānuka	1L	1000mm
5%	<i>Leucopogon fasciculatus</i>	mingimingi	1L	1000mm
5%	<i>Macropiper excelsum</i>	kawakawa	1L	1000mm
1%	<i>Nestegis lanceolata</i>	white maire	2L	1000mm
5%	<i>Pakaua pennigera</i>	gully fern	1L	1000mm
8%	<i>Parablechnum novae-zelandiae</i>	kioko	1L	1000mm
10%	<i>Rhoplostylis sapida</i>	nikau	2L	1000mm
LM Lower riparian planting mix*				
30%	<i>Carex geminata</i>	rautahi	1L	1000mm
25%	<i>Carex virgata</i>	swamp sedge	1L	1000mm
30%	<i>Juncus edgariae</i>	wiwi	1L	1000mm
10%	<i>Cordyline australis</i>	tī kouka	2L	1000mm
5%	<i>Laurelia novae-zelandiae</i>	pukatea	2L	1000mm
PM Lot revegetation planting mix*				
20%	<i>Macropiper excelsum</i>	kawakawa	1L	1000mm
50%	<i>Phormium tenax</i>	harakeke	1L	1000mm
5%	<i>Cordyline australis</i>	tī kouka	2L	1000mm
5%	<i>Rhoplostylis sapida</i>	nikau	2L	1000mm
20%	<i>Coprosma robusta</i>	karamū	1L	1000mm
SM Stormwater pond edge planting mix*				
25%	<i>Apodasmia sphaerica</i>	olai	1L	1000mm
25%	<i>Carex secta</i>	pūrei	1L	1000mm
25%	<i>Juncus edgariae</i>	wiwi	1L	1000mm
25%	<i>Typha orientalis</i>	raupō	1L	1000mm
WM Wetland planting mix*				
15%	<i>Machaeringa articulata</i>	jointed twig rush	1L	1000mm
15%	<i>Carex secta</i>	pūrei	1L	1000mm
15%	<i>Schoenoplectus tobernaemontani</i>	kuawa	1L	1000mm
10%	<i>Eleocharis sphacelata</i>	kuta	1L	1000mm
15%	<i>Cyperus ustulatus</i>	plant umbrella sedge	1L	1000mm
10%	<i>Carex geminata</i>	rautahi	1L	1000mm
10%	<i>Carex virgata</i>	swamp sedge	1L	1000mm
10%	<i>Eleocharis acuta</i>	sharp spike sedge	1L	1000mm

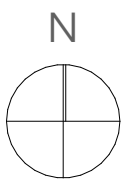
Notes: *Except tree species, planting mixes to be planted in species groups of 3 min. for small garden (<9m²) and 5 min. for larger gardens (>9m²)
All plant species to be sourced from local nurseries
Plant selection is based on achieving target ecosystem type W11
Revegetation planting mix to be planted in two stages. The first stage with colonising species and the second stage with enrichment species, with timings TBD at EPA stage
All existing native bush to remain



Client
Vineway Limited

Project
Delmore, Upper Orewa, Auckland

Drawing
2180/09 Revegetation Plan 3 (Stage 1)



Scale
1:2000@A1
1:4000@A3

Issue Date
03/07/2025
Issue
FTA Rev B RC

Drawn
TX
Checked
MB



LOWER RIPARIAN PLANTING MIX



UPPER RIPARIAN PLANTING MIX



STORMWATER POND EDGE PLANTING MIX



NATIVE BUSH REVEGETATION PLANTING MIX



BM

Alsophila tricolor



BM

Microlaena avenacea



BM

Astelia solandri



BM

Carex banksiana



BM

Carex dissita



BM

Cordyline australis



BM

Pimelea longifolia



BM

Alectryon excelsus



BM

Beilschmiedia taraira



BM

Beilschmiedia tawa



BM

Knightia excelsa



BM

Nestegis lanceolata



BM

Podocarpus totara



BM

Vitex lucens



BM

Dacrycarpus dacrydioides



BM

Dacrydium cupressinum



BM

Phyllocladus trichomanoides



BM

Rhopalostylis sapida



BM

Coprosma robusta



BM

Griselinia lucida



BM

Laurelia novae-zelandiae



BM

Melicytus macrophyllus



BM

Myrsine australis



BM

Olearia rani



BM

Pittosporum tenuifolium



BM

Kunzea ericoides



BM

Leptospermum scoparium



BM

Pectinopitys ferruginea



BM

Prumnopitys taxifolia



BM

Corynocarpus laevigatus



BM

Dysoxylum spectabile

WETLAND PLANTING MIX



WM

Machaerina articulata



WM

Carex secta



WM

Schoenoplectus tabernaemontani



WM

Eleocharis sphacelata



WM

Cyperus ustulatus



WM

Carex geminata



WM

Carex virgata



WM

Eleocharis acuta