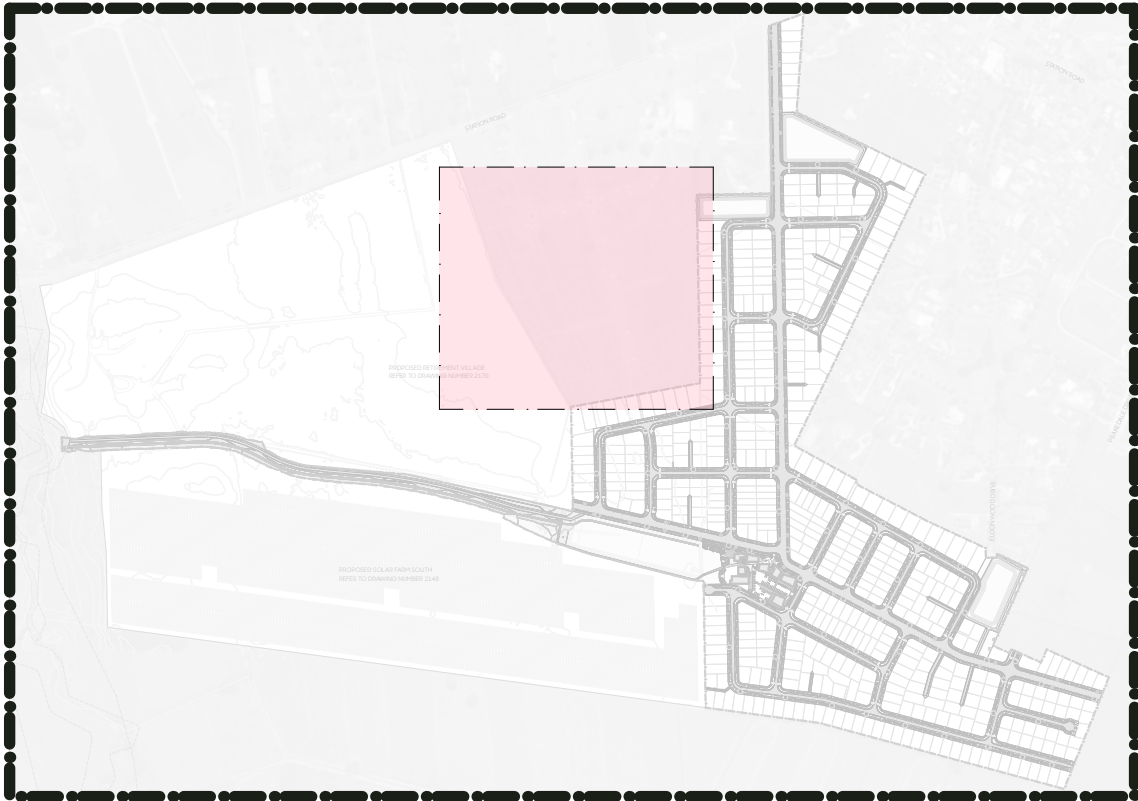




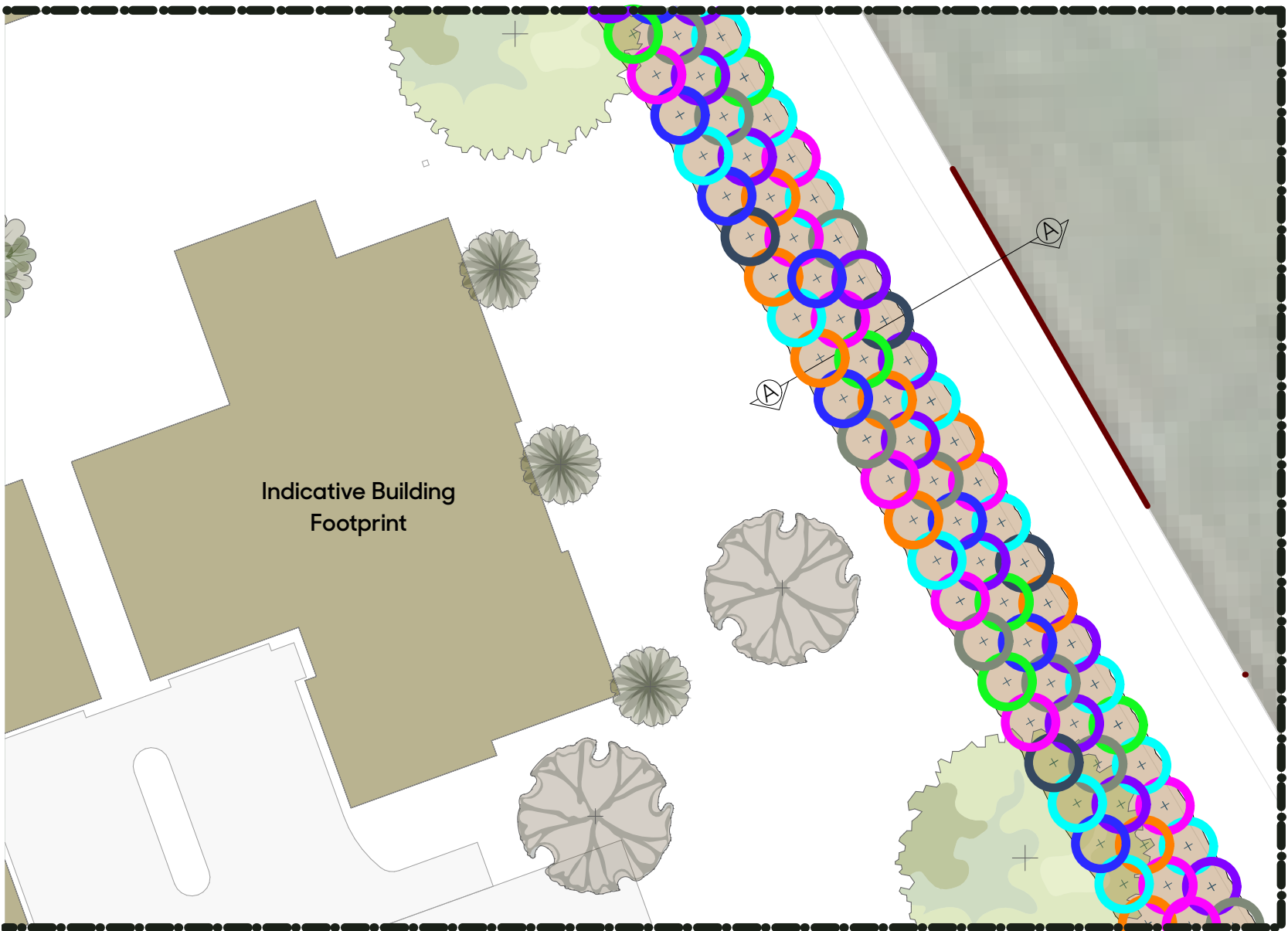
LEGEND

- 3.0m Wide Native Specimen Mixed Buffer
- 3.0m Wide Native Specimen Mixed Buffer

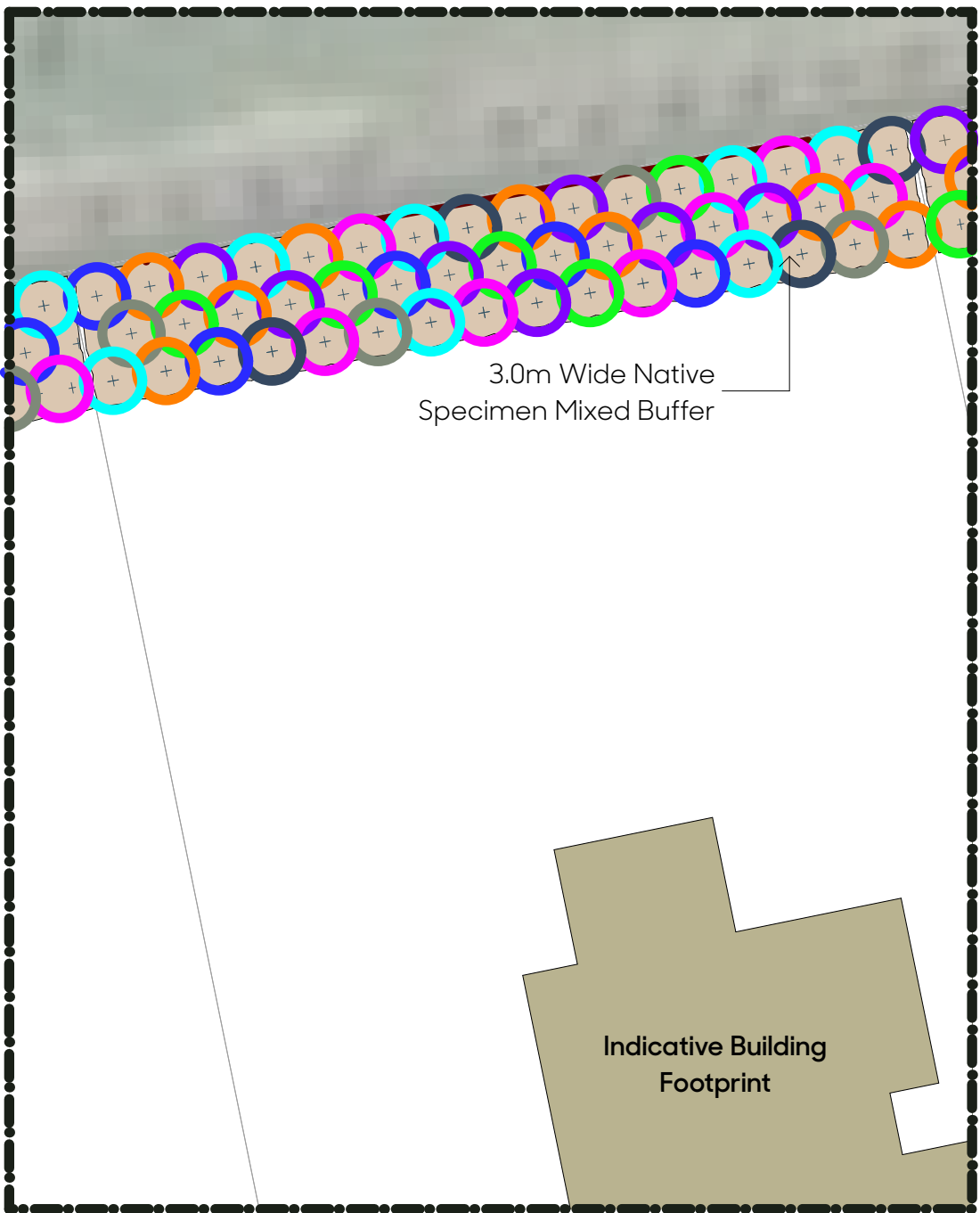


LOCATION PLAN - NTS





TYPICAL PLAN 01: 3.0m WIDE NATIVE SPECIMEN MIXED BUFFER



TYPICAL PLAN 02: 3.0m WIDE NATIVE SPECIMEN MIXED BUFFER  
OPTION ONE

Code	Botanical Name	Common Name	Grade	Spacing
Option One – Native Specimen Mixed Buffer				
1	<i>Cordyline australis</i>	tī kōuka	5L	1.2m
2	<i>Kunzea ericoides</i>	kānuka	5L	1.2m
3	<i>Leptospermum scoparium</i>	manuka	5L	1.2m
4	<i>Myrsine australis</i>	māpou	5L	1.2m
5	<i>Phormium cookianum</i>	wharariki	5L	1.2m
6	<i>Pittosporum crassifolium</i>	karo	5L	1.2m
7	<i>Knightia excelsa</i>	rewarewa	5L	1.2m
8	<i>Sophora microphylla</i>	kōwhai	5L	1.2m

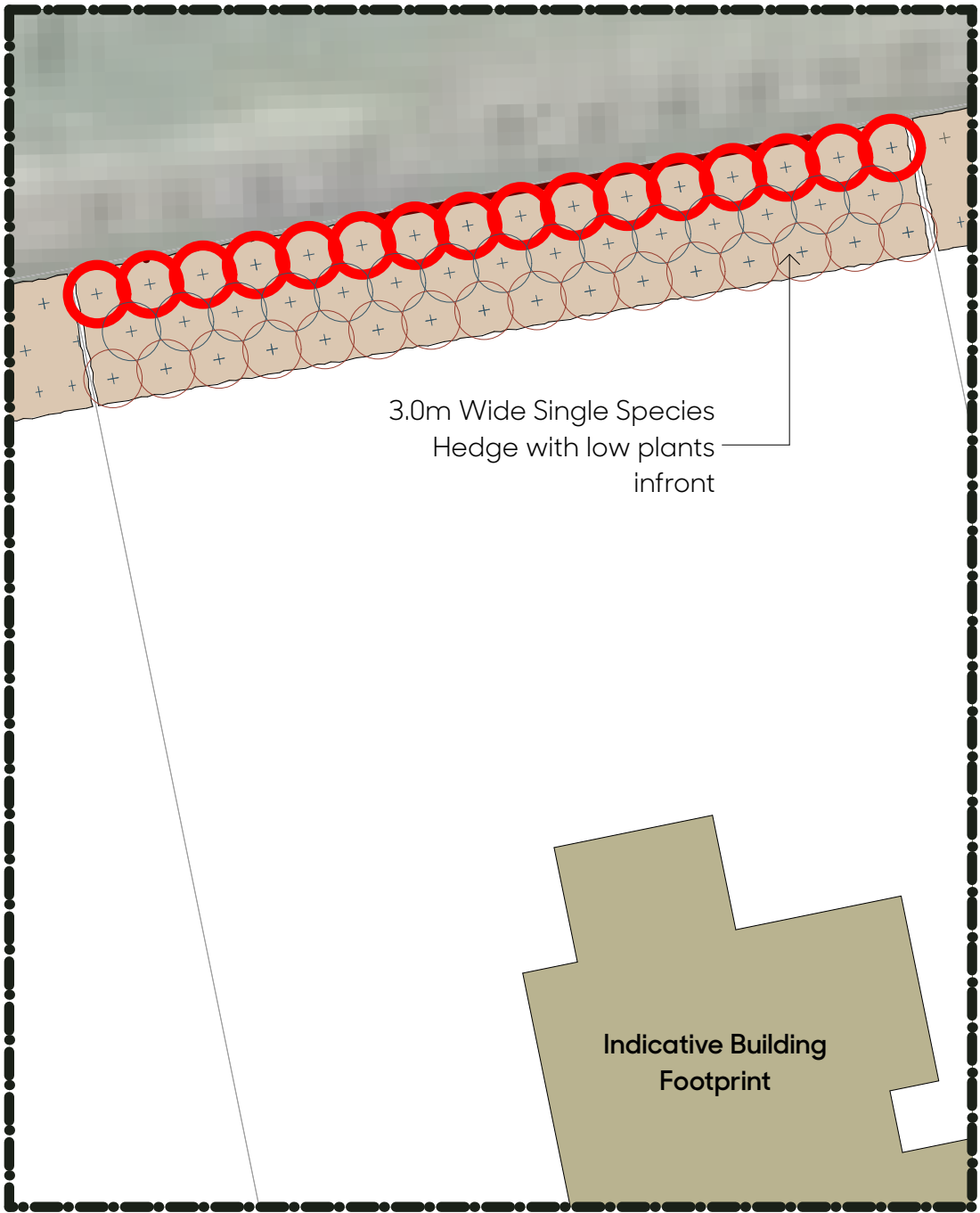
Notes: – Species are to be planted in isolation to create a diverse and natural-looking buffer.  
– 0.8 Plants per m2 (triangular planting)

NATIVE SPECIMEN PALETTE



SECTION A-A: 3.0m WIDE NATIVE SPECIMEN MIXED BUFFER 1:25@A1 / 1:50@A3

Note: Planting shown at 10-year maturity (expected maturity to be achieved at 5 – 7 years)



TYPICAL PLAN 02: 3.0m WIDE NATIVE SPECIMEN MIXED BUFFER  
OPTION TWO

Option Two – Single Specimen Hedge w/ Low Border Planting				
Hedge Options				
1	<i>Camellia Setsugekka</i>	Camellia	15L	1.2m
2	<i>Griselinia 'Broadway Mint'</i>	kapuka	15L	1.2m
3	<i>Pittosporum 'Reverend Green'</i>	kohohu	15L	1.2m
4	<i>Photinia 'Red Robin'</i>	Photinia	15L	1.2m
5	<i>Viburnum tinus</i>	Viburnum	15L	1.2m
Low Border Planting Options – Middle Tier				
1	<i>Apodasmia similis</i>	ai ai	2L	1.2m
2	<i>Astelia fragrans</i>	kakaha	2L	1.2m
3	<i>Chionochloa flavicans</i>	haumata	2L	1.2m
4	<i>Trachelospermum jasminoides</i>	star jasmine	2L	1.2m
5	<i>Westringia fruticosa 'Mundi'</i>	westringia	2L	1.2m
Low Border Planting Options – Front				
1	<i>Carex testacea</i>	carex	2L	0.75m
2	<i>Hebe townsonii</i>	hebe	2L	0.75m
3	<i>Libertia peregrinans</i>	NZ Iris	2L	0.75m
4	<i>Lomandra Tanika</i>	lomandra	2L	0.75m
5	<i>Phormium 'Emerald Green'</i>	dwarf flax	2L	0.75m

Notes: – Hedge to be maintained at a 2.5m high minimum.  
– 2 Plants per m2

HEDGE OPTIONS MIDDLE TIER FRONT

