

THE GARDENS

LANDSCAPE CONCEPT PLAN



KEY	
1	PÉTANQUE COURT - CRUSHED SHELL MERGES INTO PLANTED EDGES. STRUCTURE AND SHELTER FROM PLEACHED TREES
2	BENCH SEATING RECESSED INTO GARDEN ISLANDS - OVERLOOKS PÉTANQUE
3	SPECIMEN TREES - STRUCTURE AND SEASONAL COLOUR AND INTEREST
4	STEPPING STONE PATH THROUGH LUSH GARDEN PLANTING
5	MORE INTIMATE SEATING AREAS AND TRANQUIL READING NOOKS
6	LARGE, PLANTED POTS CONTINUE THE GARDEN INTO PAVED AREAS
7	OPEN-AIR EXTENSION OF LIBRARY
8	ON-PODIUM PLANTING PROVIDES A GREEN OUTLOOK AND SCREENING FROM THE GYM
9	CONNECTION TO OTHER PODIUM SPACES AND GATE TO RESERVE
10	COURTYARD GARDEN - LARGE NATURAL STONE STEPPERS, LUSH PLANTING AND SPECIMEN TREE - DIRECT AND VISUAL CONNECTION INTO LINK
11	PLANTING EXTENDS INTO PAVED ENTRANCE SPACE
12	PAUSE POINT - BENCH SEATING REFLECTS THE MATERIALS AND FORMS OF THE ARCHITECTURE
13	HEDGING TO PROVIDE SCREENING TO ADJOINING GROUND FLOOR UNITS
14	PATH
15	GATED, PRIVATE ACCESS TO UNITS
16	RESIDENT PARKING



THE GARDENS

LOOK & FEEL

Largely located on natural ground, the northern walled garden balances linear, formal elements and more a more naturalistic, 'secret garden' atmosphere. Specimen trees and garden plants are highly ornamental , with flowers and foliage reflecting the changing of the seasons. Paths link the garden pavilion, colonnade and library, and connect to other podium spaces across the northern edge. A pétanque court and seating are set into the lush gardens, and deep planting beds define garden rooms that function as an open-air extension to the library.

The southern entrance garden provides a green and welcoming arrival experience and garden outlook for adjacent and overlooking resident units.



LUSH ESTABLISHED GARDENS



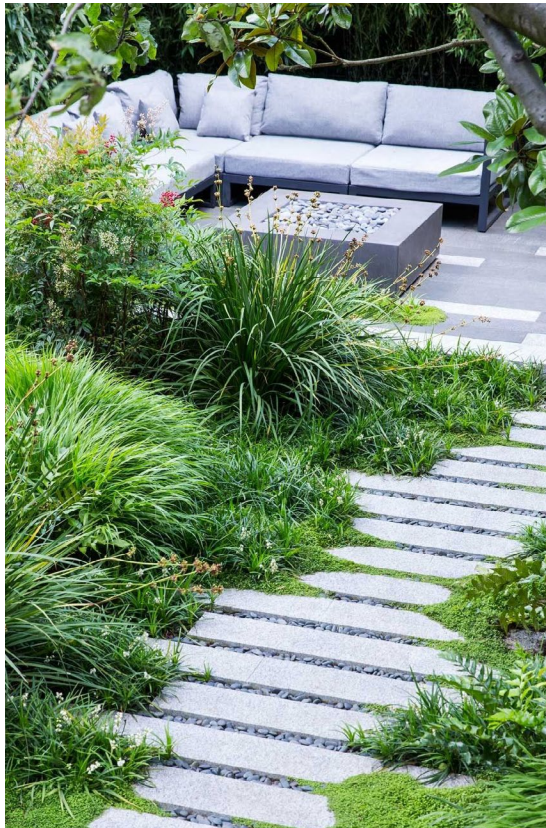
PÉTANQUE



SEASONAL INTEREST

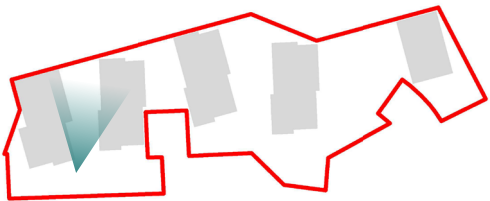


ARCHITECTURAL REFERENCES

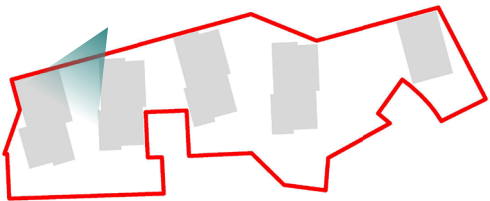


TRANQUIL READING ROOMS

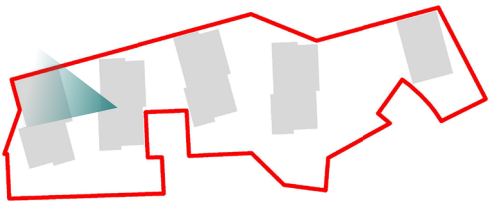
THE GARDENS
RENDER



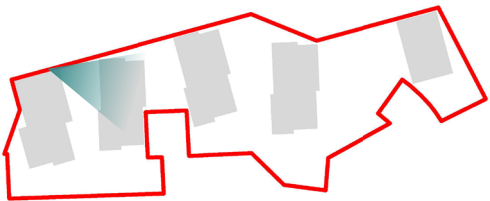
THE GARDENS
RENDER



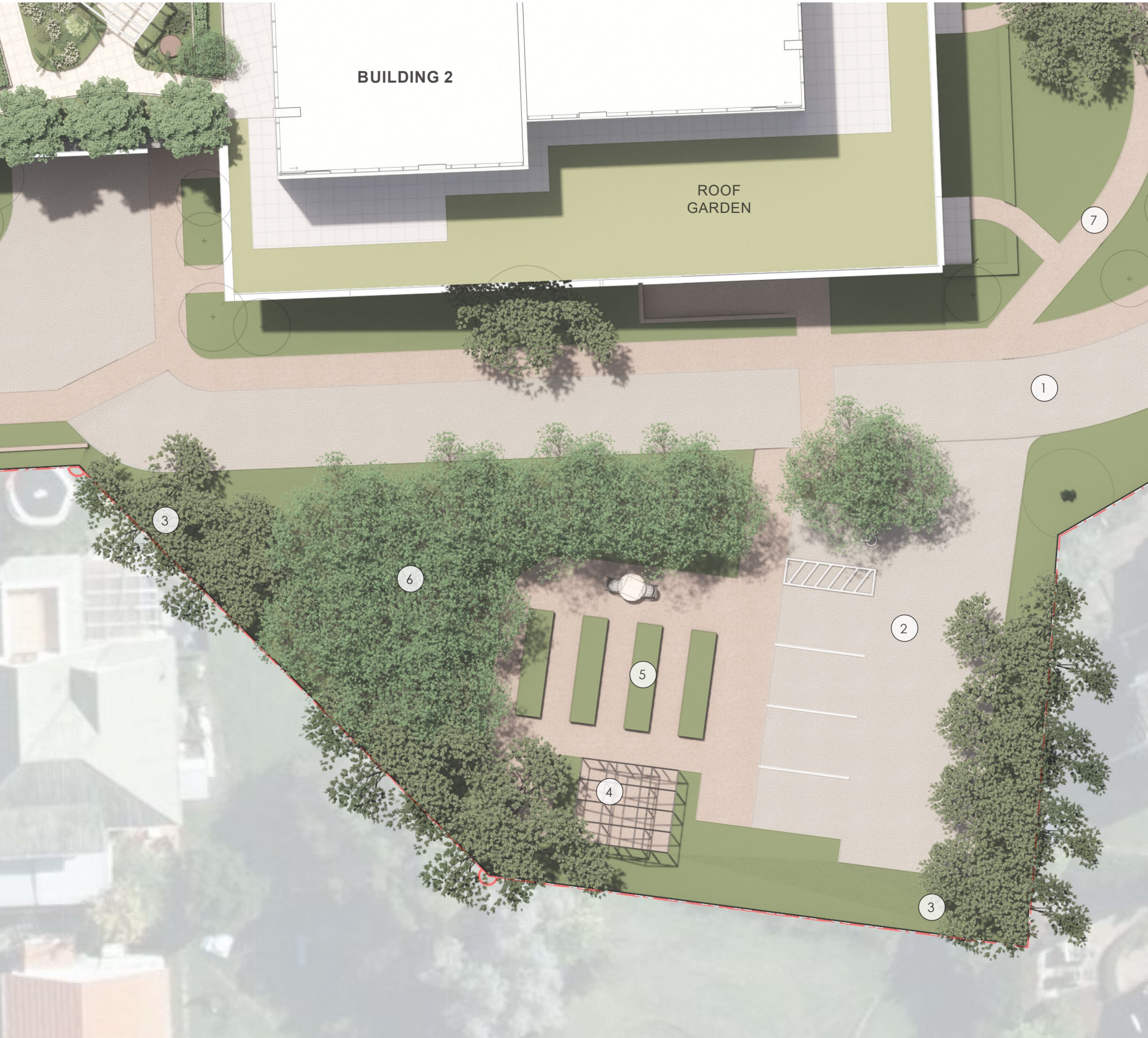
THE GARDENS
RENDER



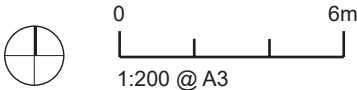
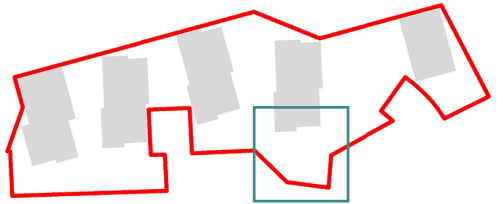
THE GARDENS
RENDER



PRODUCTIVE GARDEN
LANDSCAPE CONCEPT PLAN



- KEY
- 1 SOUTHERN DRIVEWAY
 - 2 VISITOR PARKING - 4 + 1 ACCESSIBLE SPACES
 - 3 NATIVE KOROWAI PLANTING - INDIGENOUS TREES AND UNDERPLANTING AT PERIMETER
PROVIDE SCREENING TO NEIGHBOURS
 - 4 GREENHOUSE | WINTERGARDEN
 - 5 TIMBER RAISED PLANTING BEDS FOR VEGETABLES, HERBS AND ORNAMENTALS
 - 6 ORCHARD OF FRUIT TREES
 - 7 NGAHERE WALK



PRODUCTIVE GARDEN

LOOK & FEEL

The productive garden is located just off the southern driveway and pedestrian route. Raised timber planter beds filled with easy-access fruit, vegetables, herbs and ornamentals invite resident engagement, and opportunities for garden-to-table dining. A glasshouse or wintergarden provides shelter and a space to cultivate and appreciate fruit and exotic flowering plants. Alternatively, a ‘makers’ shed’ for residents to use for crafts and minor DIY projects could occupy this space. Fruit trees on the eastern slope form a small orchard to provide interest throughout the seasons - spring blossom, summer fruit and autumn colour.



RAISED TIMBER PLANTERS



GLASSHOUSE | WINTERGARDEN



ORCHARD OF FRUIT TREES



EDIBLES



ORNAMENTALS

4 | BOUNDARY CONDITIONS



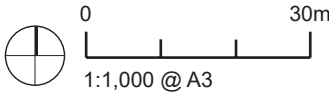
BOUNDARY CONDITIONS

BOUNDARY TREATMENTS & THRESHOLDS

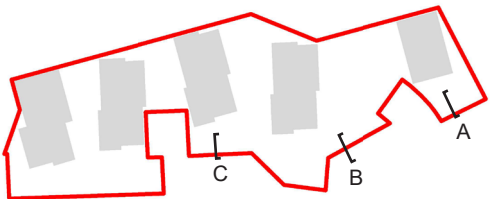
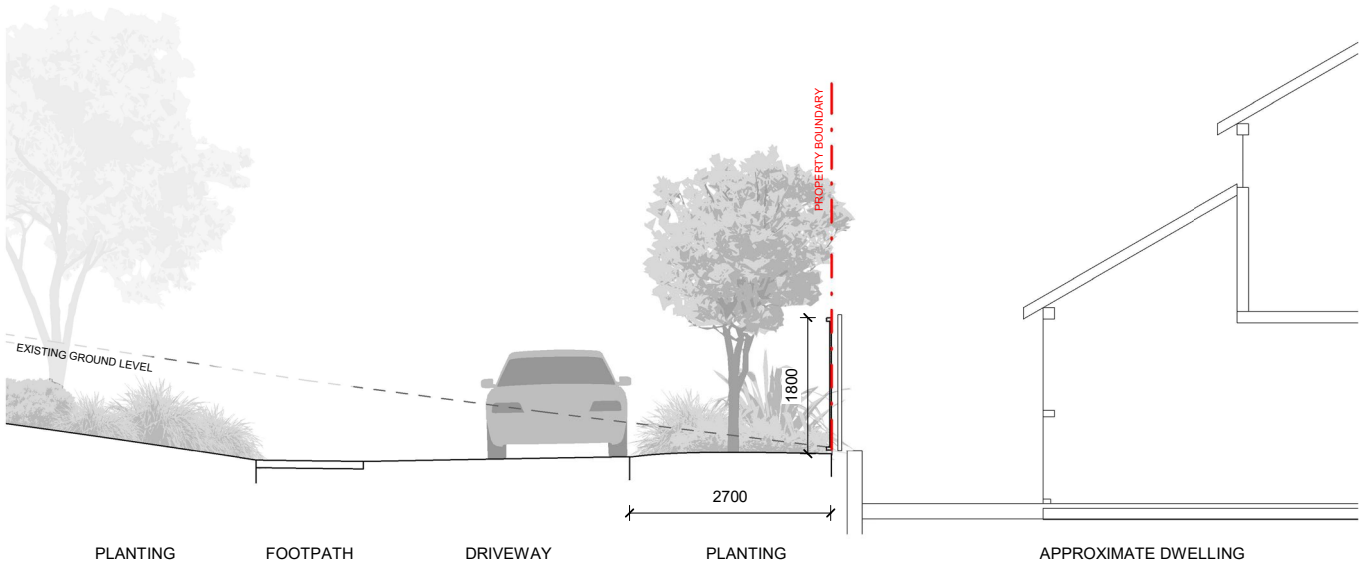
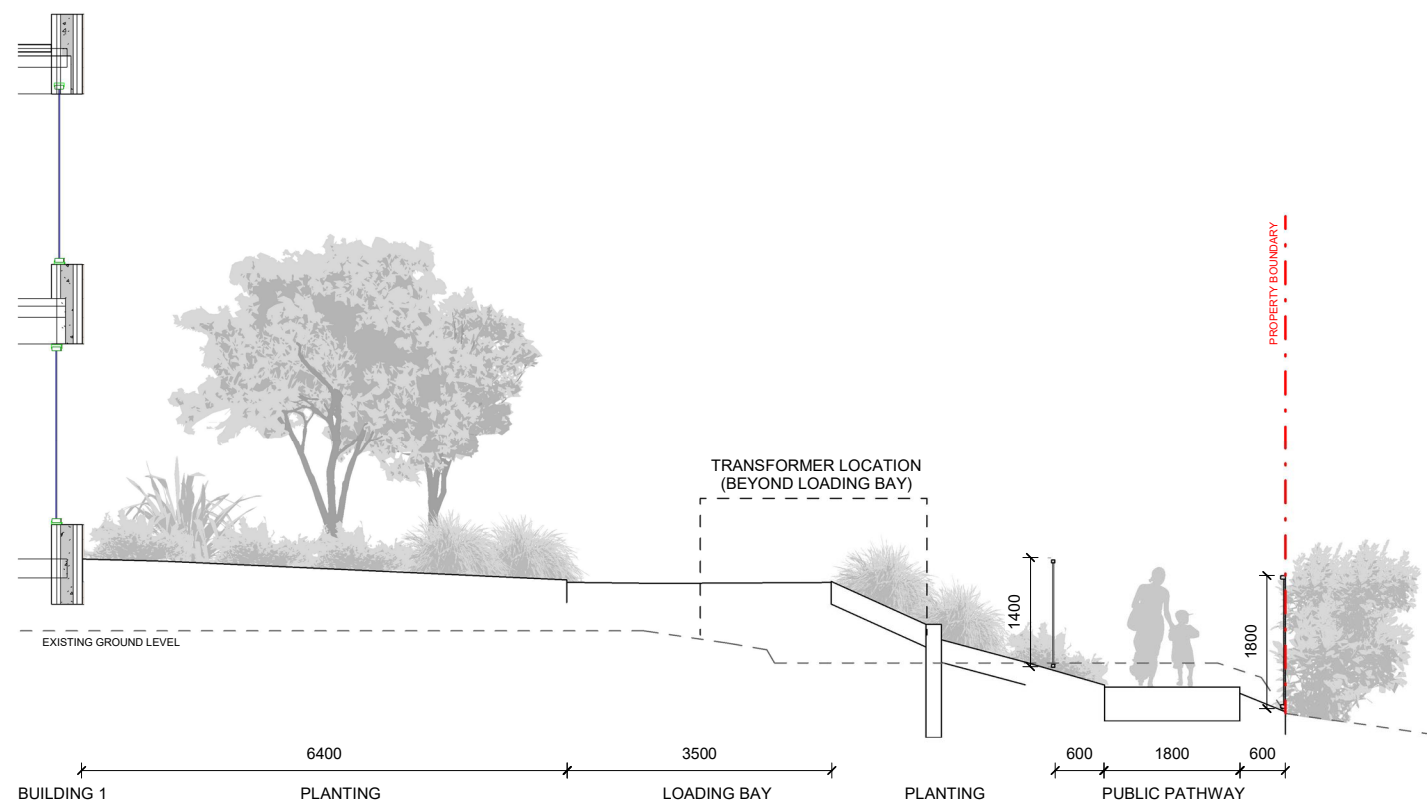


LEGEND

- ENTRANCE WALL AND GATE - 1.5M
- FENCE - 1.8M CLOSED BOARD ALUMINIUM
- FENCE - 1.4M PERMEABLE
- FENCE - 1.2M PERMEABLE
- PODIUM WALL
- BOUNDARY PLANTING - WIDTH TO VARY

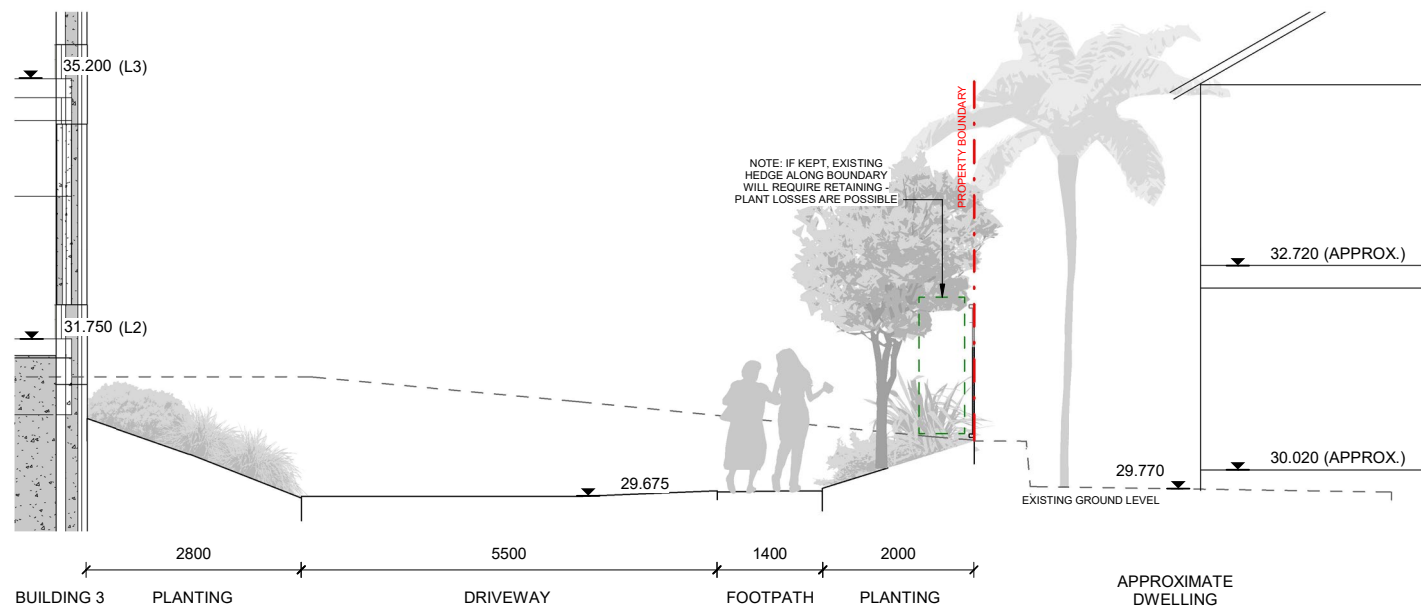


SECTIONS - SOUTHERN BOUNDARY



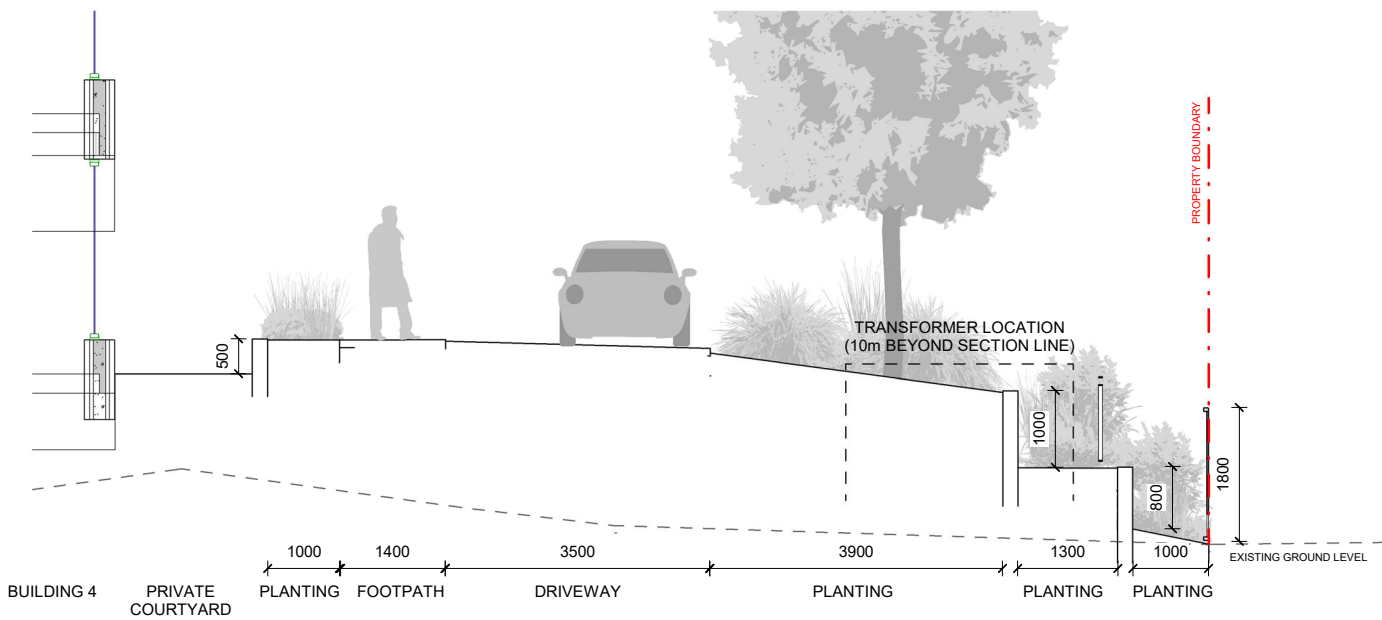
A Section A
231 Scale: 1 : 100

B Section B
231 Scale: 1 : 100

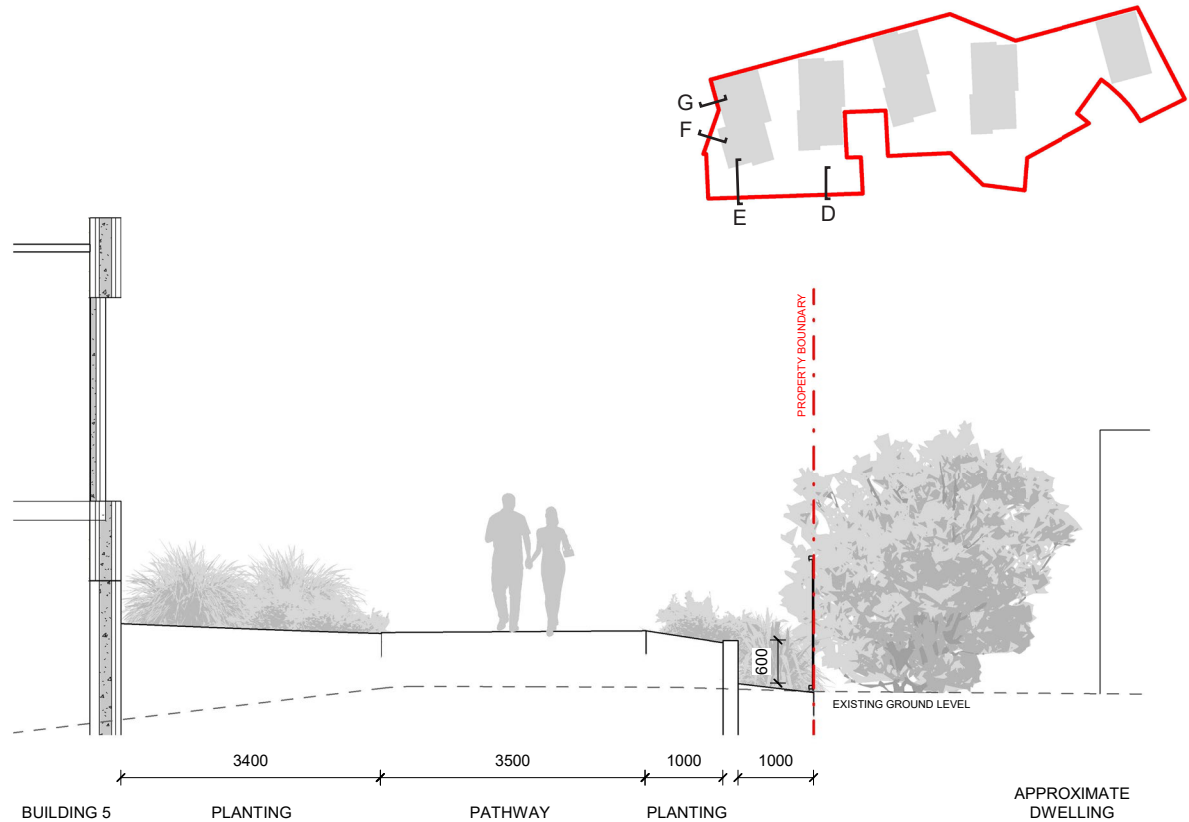


C Section C
232 Scale: 1 : 100

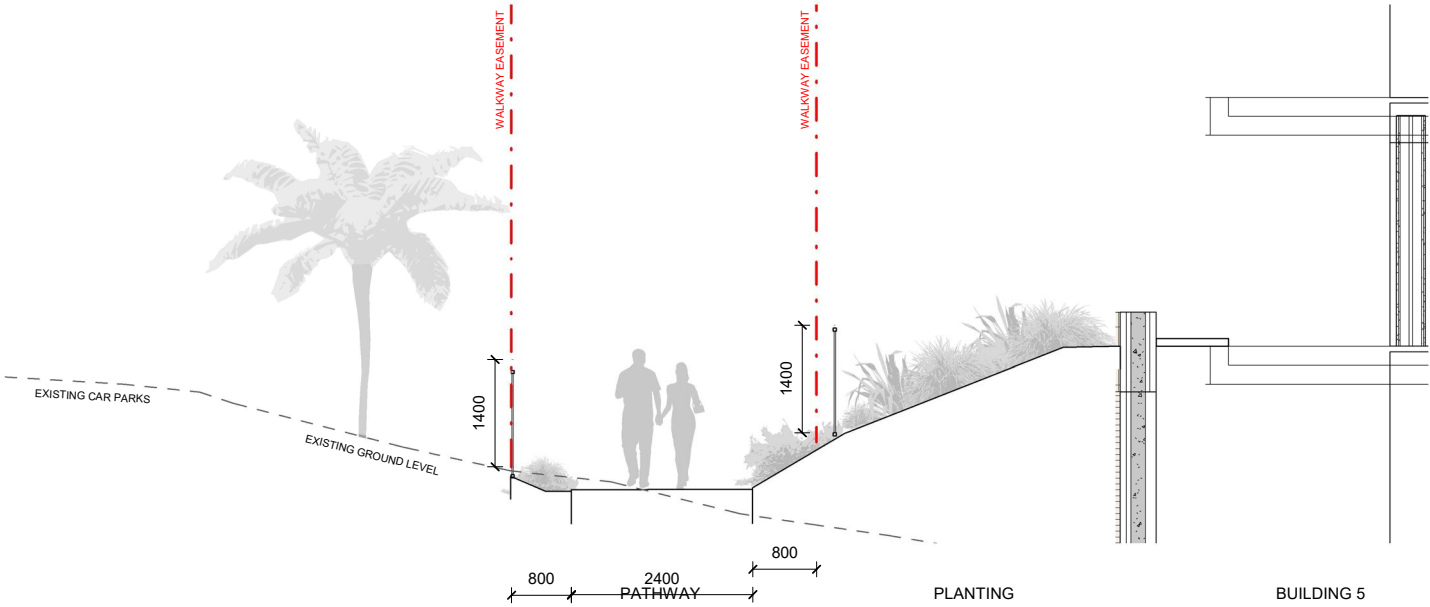
SECTIONS



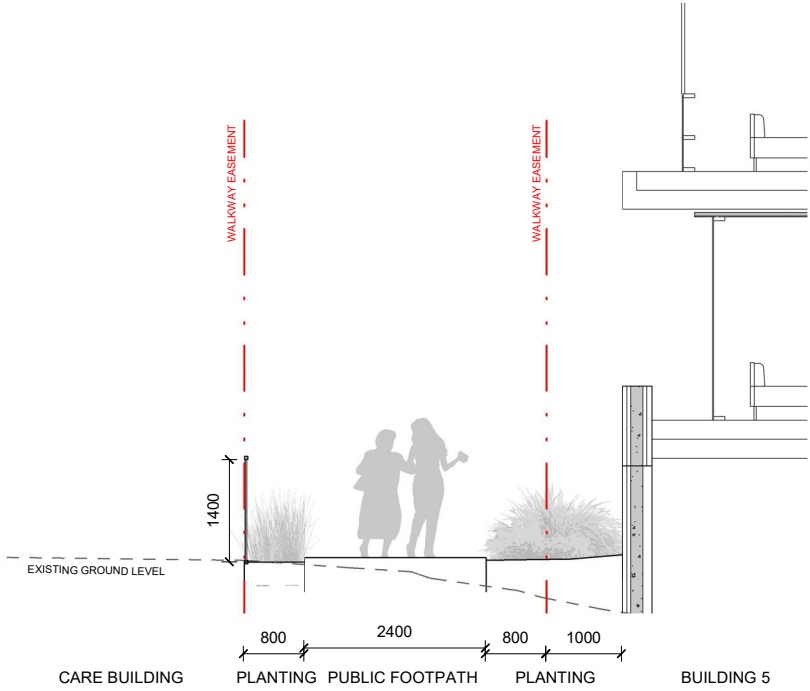
D Section D
233 Scale: 1 : 100



E Section E
233 Scale: 1 : 100

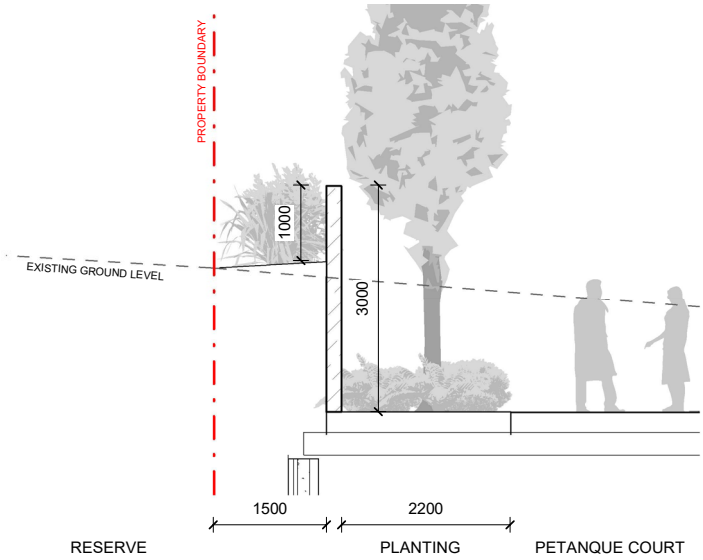
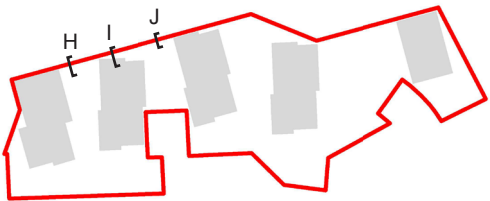


F Section F
233 Scale: 1 : 100

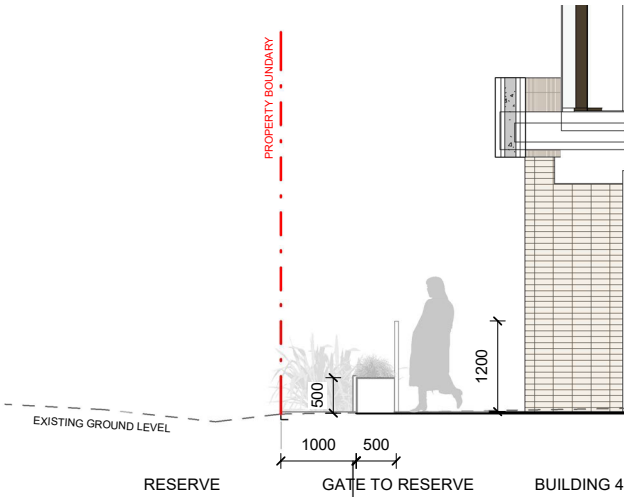


G Section G
233 Scale: 1 : 100

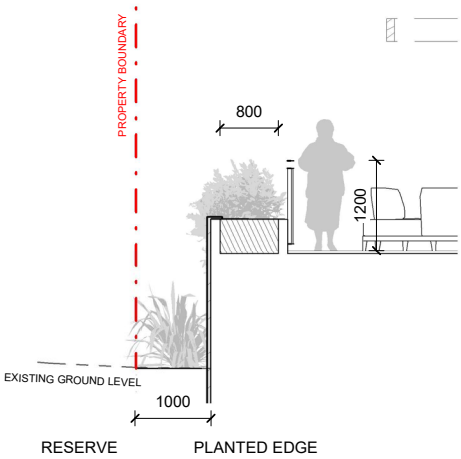
SECTIONS



H Section H
234 Scale: 1 : 100

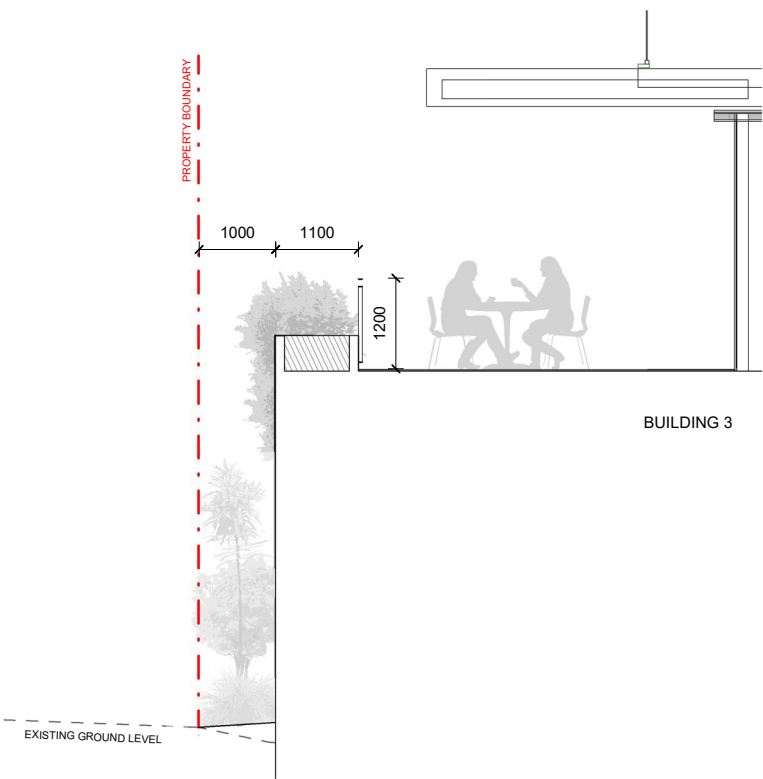


I Section I
234 Scale: 1 : 100

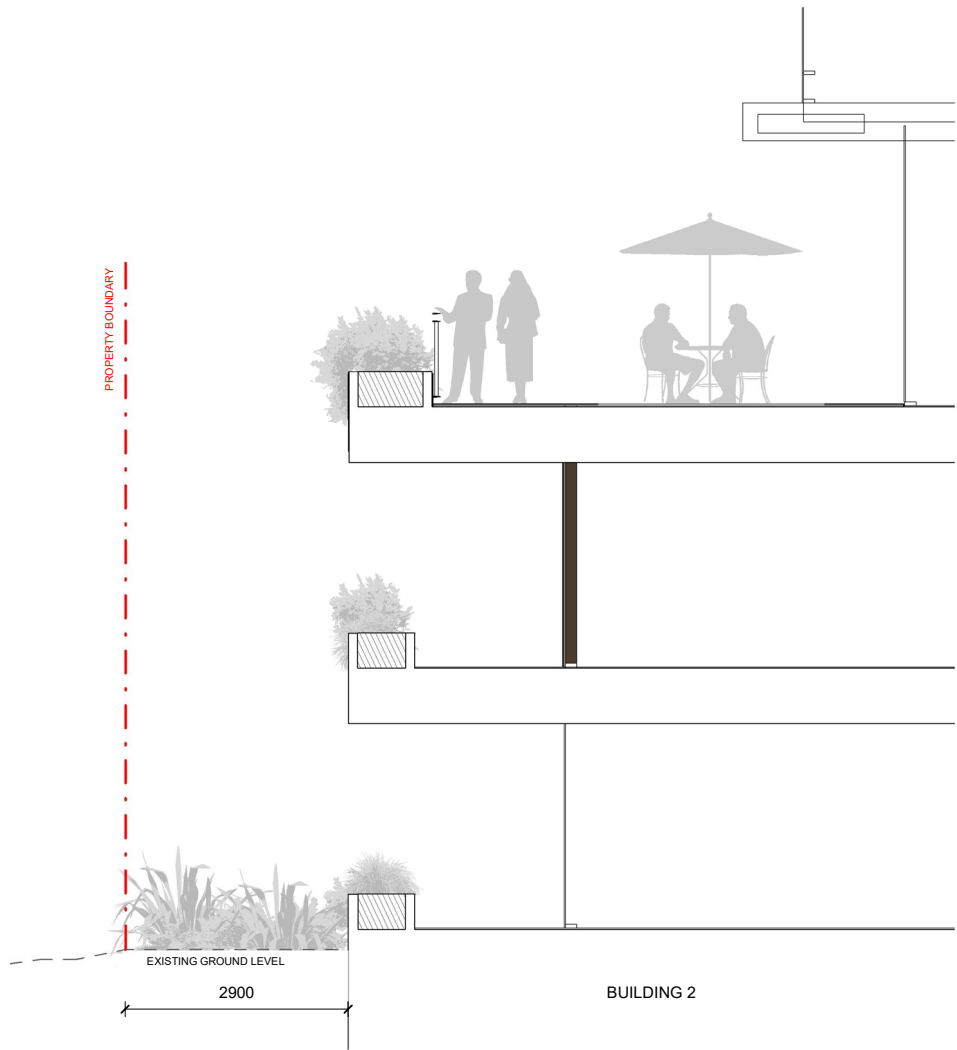


J Section J
234 Scale: 1 : 100

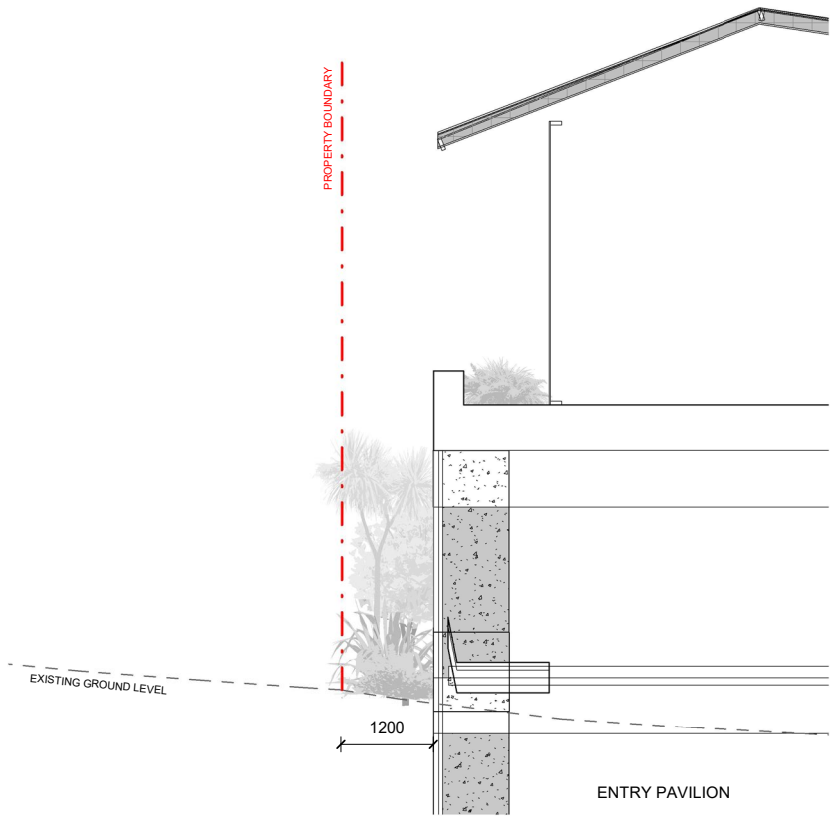
SECTIONS



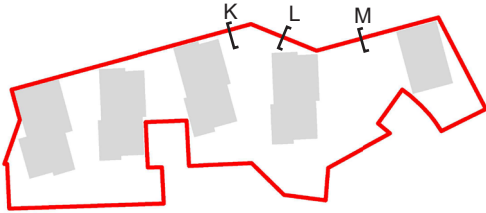
K
235
Section K
Scale: 1 : 100



L
235
Section L
Scale: 1 : 100



M
235
Section M
Scale: 1 : 100



5 | SETOUT & LEVELS



This is a detailed site plan for a residential development. The plan shows the layout of three buildings: **BUILDING 1**, **BUILDING 2**, and the **ENTRANCE PAVILION**. The site is bounded by **AOTEA ST** to the south and east. Key features include:

- Landscaping:** Numerous trees of varying sizes are indicated by green circles. A large central green area is labeled **[No Slope]**.
- Infrastructure:** A **TRANSFORMER** is located near the southeast corner. A **Fire SEC (refer Holmes)** is marked near the center. A note indicates **ACCESS TO RUBBISH ROOM ON LEVEL 1** near Building 1.
- Topography and Grading:** The plan shows contour lines and various slope percentages (e.g., 1:12, 1:15, 1:20, 1:25, 1:30, 1:40, 1:51.2, 1:8, 1:18.6, 1:19.3, 1:21, 1:22.9, 1:23.9, 1:12.6, 1:17.3, 1:11.8, 1:9.2, 1:16.3, 1:13.1, 1:13.2, 1:36.1, 1:15.8, 1:15, 1:20.0, 1:21.0, 1:22.0, 1:23.0, 1:24.0, 1:25.0, 1:26.0, 1:27.0, 1:28.0, 1:29.0, 1:30.0, 1:31.0, 1:32.0, 1:33.0, 1:34.0, 1:35.0, 1:36.0, 1:37.0, 1:38.0, 1:39.0, 1:40.0, 1:41.0, 1:42.0, 1:43.0, 1:44.0, 1:45.0, 1:46.0, 1:47.0, 1:48.0, 1:49.0, 1:50.0, 1:51.0, 1:52.0, 1:53.0, 1:54.0, 1:55.0, 1:56.0, 1:57.0, 1:58.0, 1:59.0, 1:60.0, 1:61.0, 1:62.0, 1:63.0, 1:64.0, 1:65.0, 1:66.0, 1:67.0, 1:68.0, 1:69.0, 1:70.0, 1:71.0, 1:72.0, 1:73.0, 1:74.0, 1:75.0, 1:76.0, 1:77.0, 1:78.0, 1:79.0, 1:80.0, 1:81.0, 1:82.0, 1:83.0, 1:84.0, 1:85.0, 1:86.0, 1:87.0, 1:88.0, 1:89.0, 1:90.0, 1:91.0, 1:92.0, 1:93.0, 1:94.0, 1:95.0, 1:96.0, 1:97.0, 1:98.0, 1:99.0, 1:100.0).
- Dimensions:** Various dimensions are provided for setbacks, building footprints, and landscaping areas (e.g., 1400, 1500, 1600, 1700, 1800, 1900, 2000, 2100, 2200, 2300, 2400, 2500, 2600, 2700, 2800, 2900, 3000, 3100, 3200, 3300, 3400, 3500, 3600, 3700, 3800, 3900, 4000, 4100, 4200, 4300, 4400, 4500, 4600, 4700, 4800, 4900, 5000, 5100, 5200, 5300, 5400, 5500, 5600, 5700, 5800, 5900, 6000, 6100, 6200, 6300, 6400, 6500, 6600, 6700, 6800, 6900, 7000, 7100, 7200, 7300, 7400, 7500, 7600, 7700, 7800, 7900, 8000, 8100, 8200, 8300, 8400, 8500, 8600, 8700, 8800, 8900, 9000, 9100, 9200, 9300, 9400, 9500, 9600, 9700, 9800, 9900, 10000).
- Other Features:** A **Retaining wall - max 0.8m height** is shown along the western boundary. A north arrow is located near the center-right. A scale bar indicates **0** to **15m**. The drawing is labeled **1:300 @ A3**.

LANDSCAPE CONCEPT PLAN- RUKUTAI STREET



LANDSCAPE CONCEPT PLAN- TE ARAWA STREET



LANDSCAPE CONCEPT PLAN- TE ARAWA STREET



LANDSCAPE CONCEPT PLAN- TE ARAWA STREET

