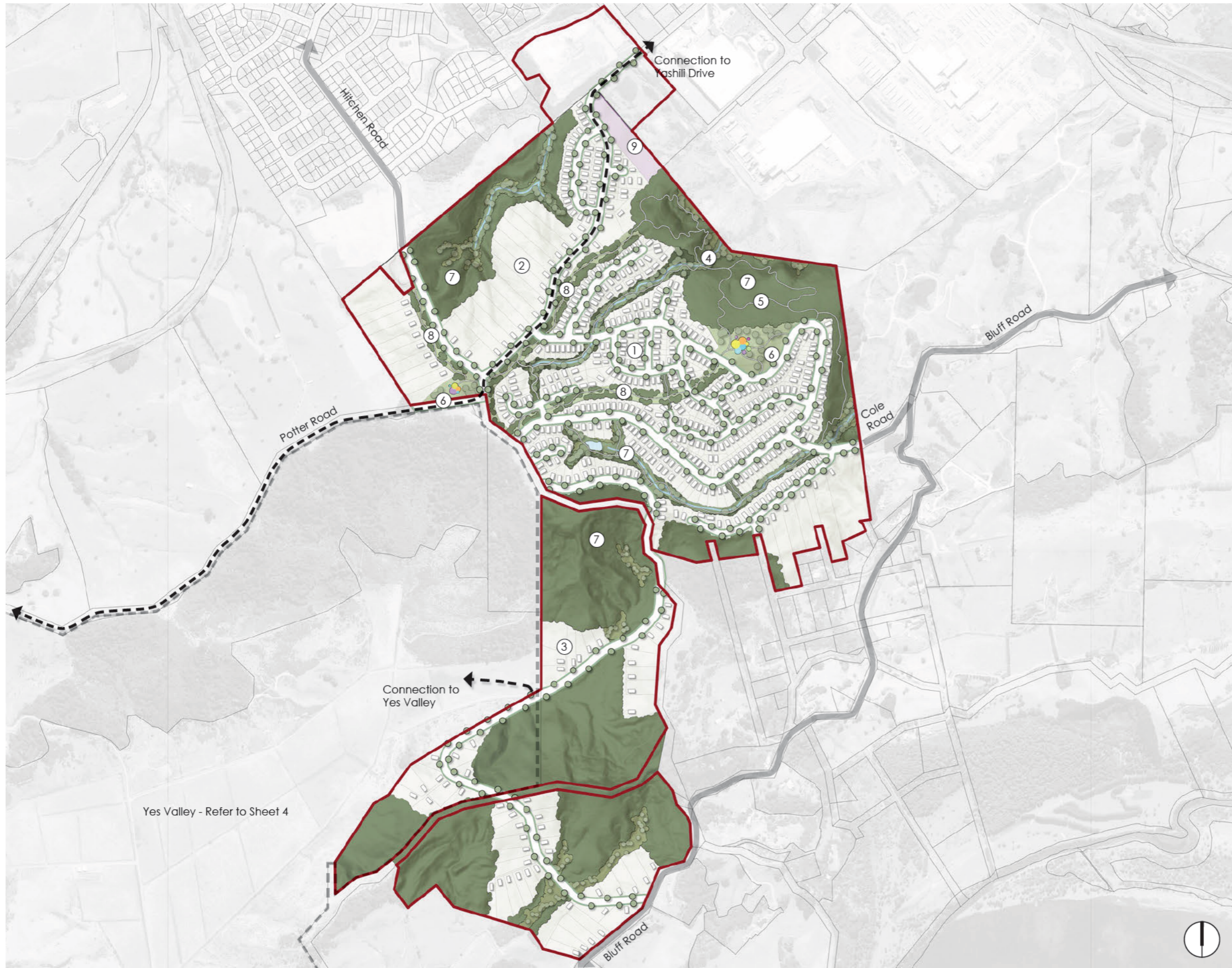






Legend

1. Vacant lot residential subdivision in stages for approximately 1,500 dwellings
2. Future neighbourhood centre
3. Future MoE School site
4. Required infrastructure within the Pōkeno West site including, new roads, water supply network, stormwater management devices and network
5. Reserve areas and recreational trails
6. Local parks and play opportunities
7. Enhancement of streams, wetlands and steep slopes



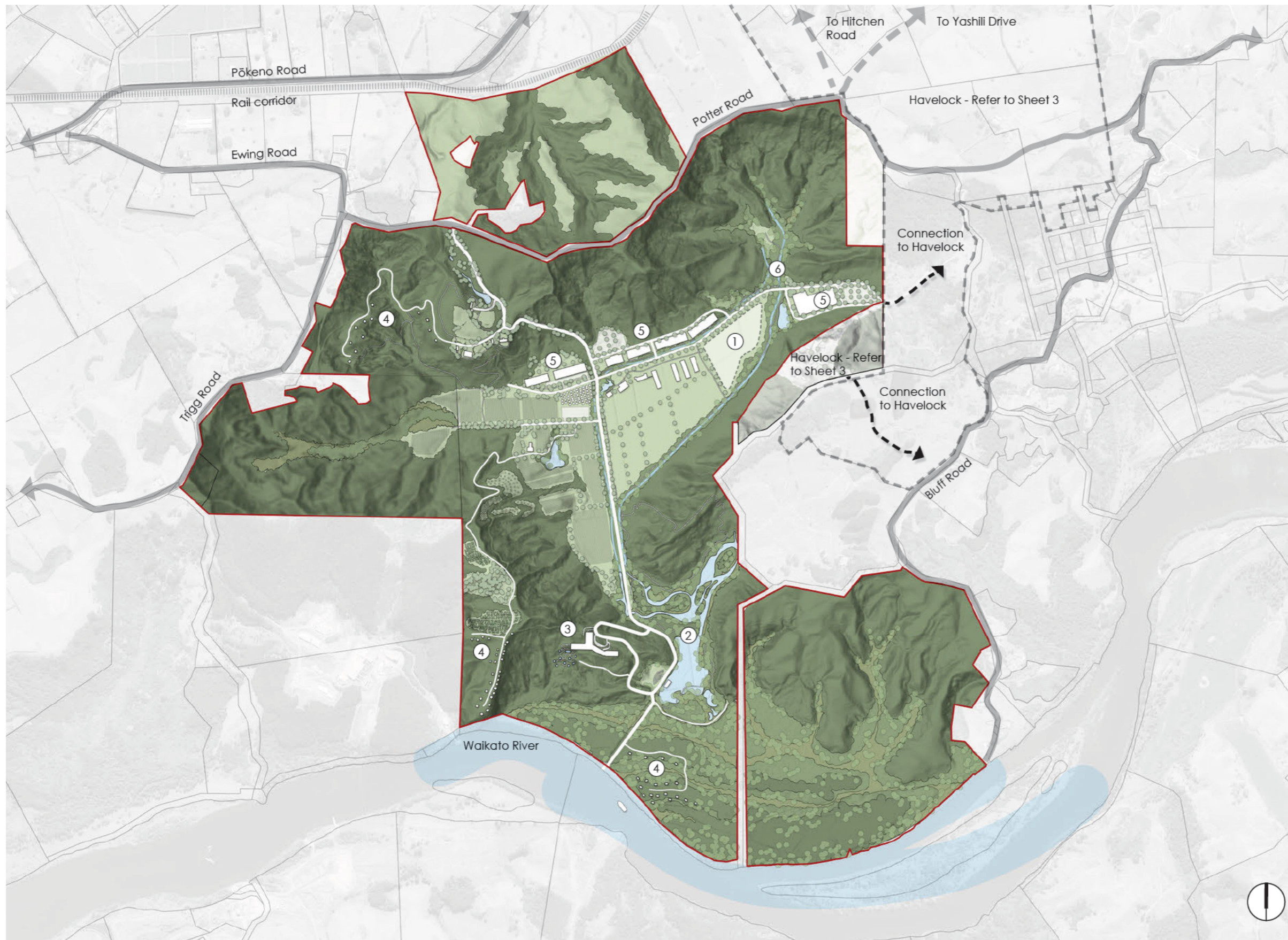
Legend

- 1. Vacant lot residential subdivision in stages for approximately 750 dwellings
- 2. Vacant lot slope residential subdivision
- 3. Vacant lot rural residential "cluster-style" subdivision
- 4. Required infrastructure within the Havelock site including, new roads, water supply network, stormwater management devices and network
- 5. Reserve areas and recreational trails
- 6. Local parks and play opportunities
- 7. Enhancement of ecological areas, streams, wetlands and steep slopes
- 8. Ridgeline plantings
- 9. General industrial zone

Yes Valley - Refer to Sheet 4



Date.	17.12.2025
Scale.	1:10,000 at A3
Sheet.	3/4
Drawn by.	J.Earl
Revision.	E



Legend

- 1. Central MBR location
- 2. Wetland
- 3. Hotel site
- 4. Glamping
- 5. Buildings and car parking for zoned visitor attractions / New Zealand showcase
- 6. Stream, wetland and steep slope planting enhancements

