

ATTACHMENTS TO
STATEMENT OF EVIDENCE OF E A STEVEN

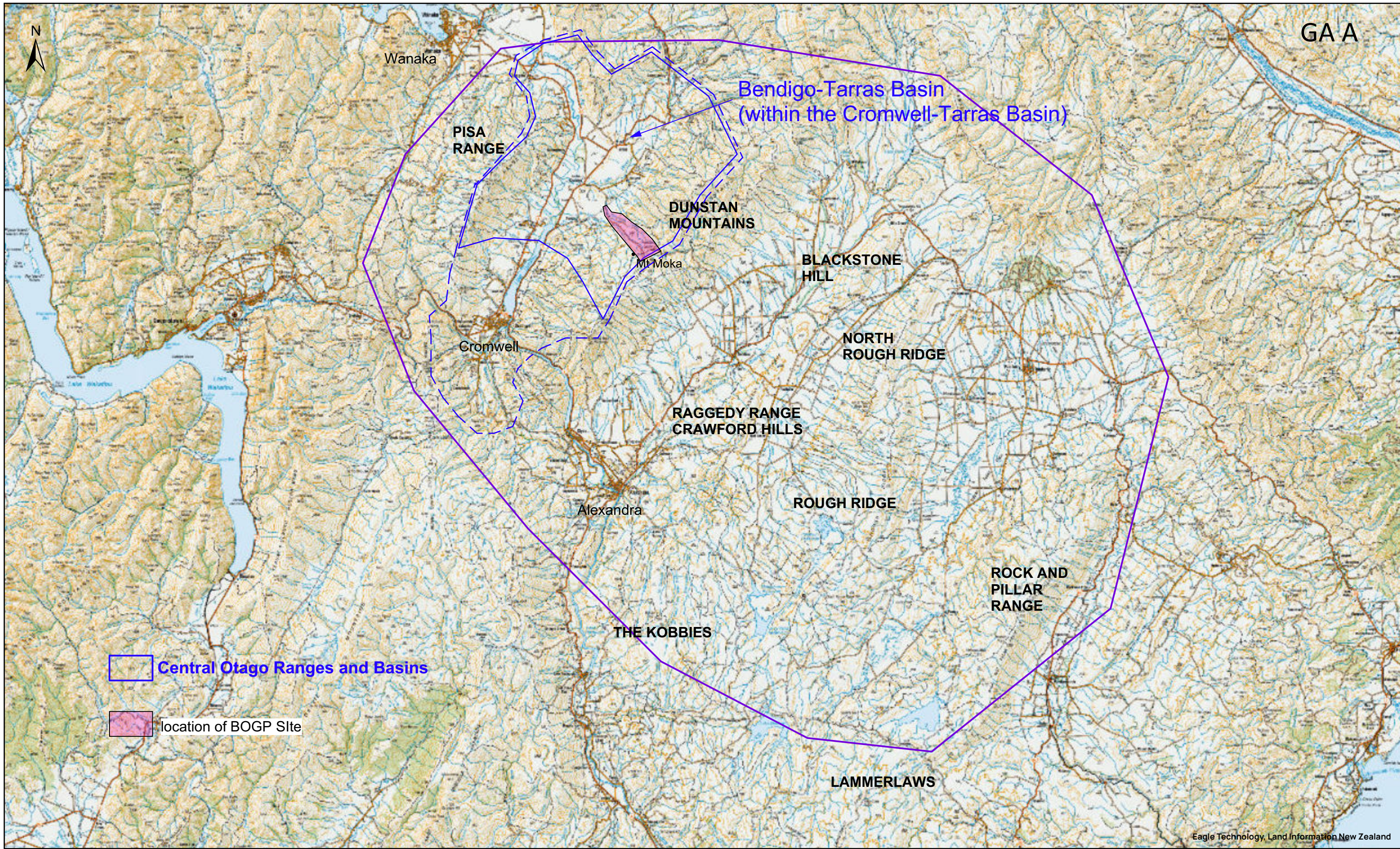
Re Matakanui Gold Ltd Bendigo-Opir Gold Project FTAA-2507-1089



For Environmental Defence Society

10 April 2026

Attachment A Fig. 1 Landscape Context BOGP
Attachment B – Land Types Map
Attachment C - Fig. 2 Named Heritage Features and Sites
Attachment D – Photos of the RAS valley Land Forms
Attachment E – View of the Rise and Shine Valley and Thomson Gorge Fault line from SH6
Attachment F1 – 1958 Aerial Views of Site
Attachment F2 – Aerial View of Site Google Earth Nov 2024
Attachment G – Photos of Site Features
Attachment H – Fig. 3A Viewing Locations for BOGP Site
Fig. 3B Viewpoints Not Covered in the BM Analysis

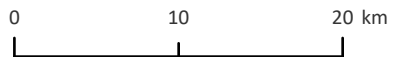


Map key

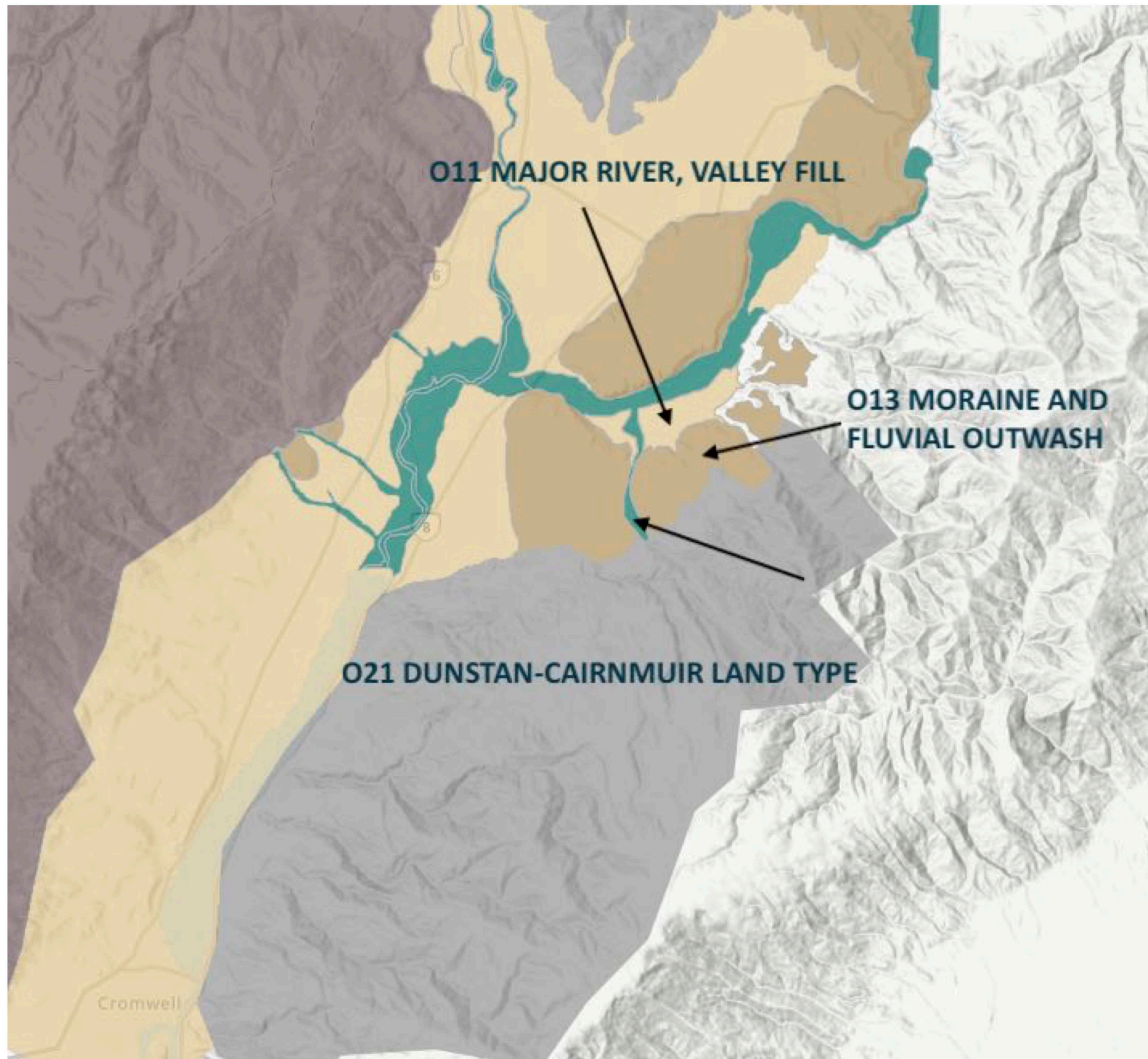
prepared by
Anne Steven
Landscape Architect
WANAKA
April 2026

FIG. 1 LANDSCAPE CONTEXT (NESTED)
BENDIGO OPHIR GOLD MINE PROJECT

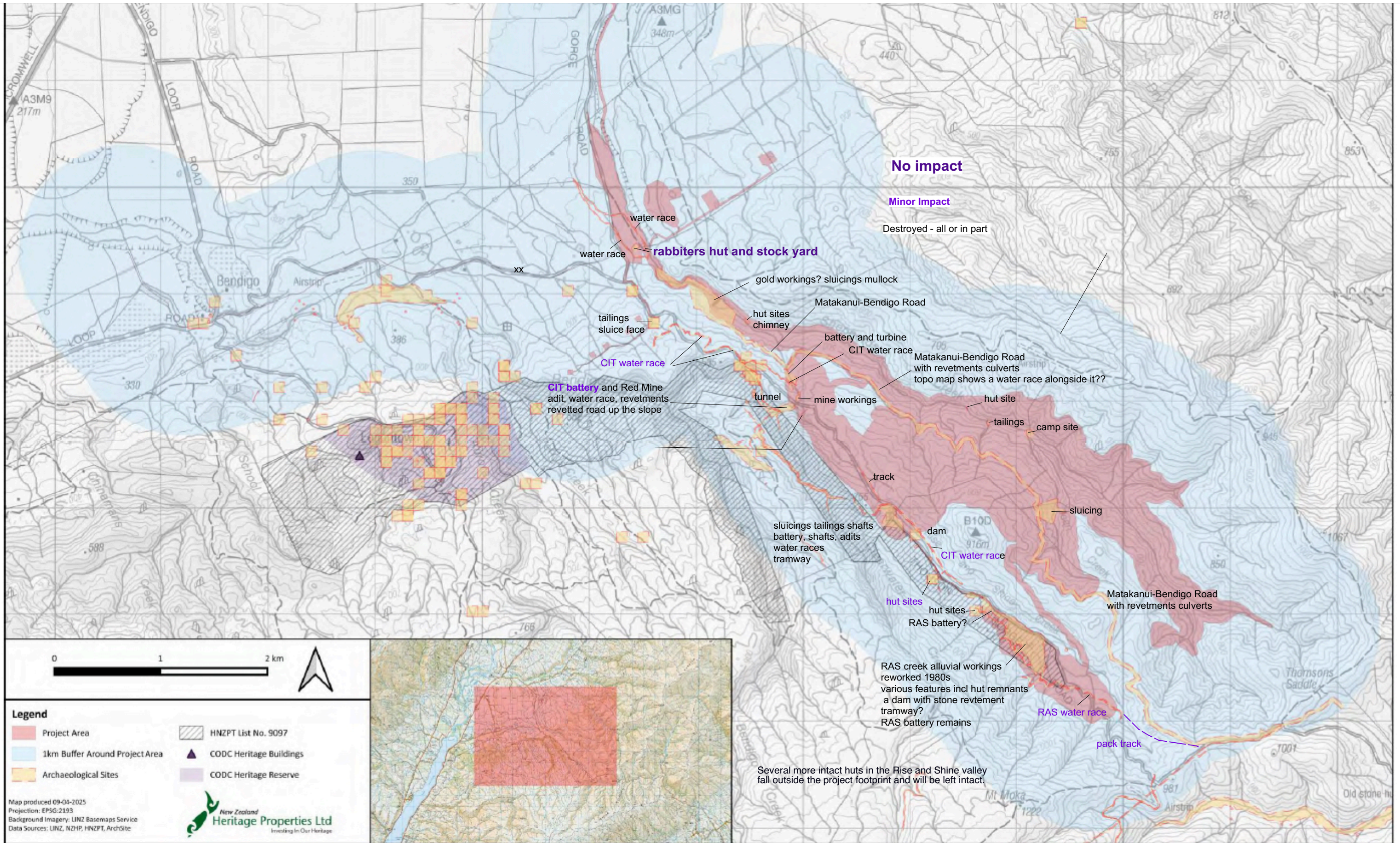
Map scale: 1:461,154



DISCLAIMER: Herenga ā Nuku | Aotearoa Outdoor Access Commission makes no express or implied warranties as to the accuracy or completeness of the data or information, nor its suitability for any purpose. Errors are inevitably part of any database and can arise by a number of means. Full disclaimer here: herengaanuku.govt.nz/maps/help/gis-data/



LAND TYPES
SOURCE: Landtyping.NZ



source: p62 Fig. 6-1 B.34 Heritage Properties NZ Ltd Heritage Assessment

Figure 6-1. Distribution of recorded heritage sites within the BOGP project area and the wider landscape.

Fig. 2 NAMED HERITAGE FEATURES AND SITES prepared by ASLA Ltd March 2026



View down the RAS valley showing off-setting and creek diversions



View southeast to east up the RAS valley show tilted slabs dipping under Battery Hill and off-setting of slabs

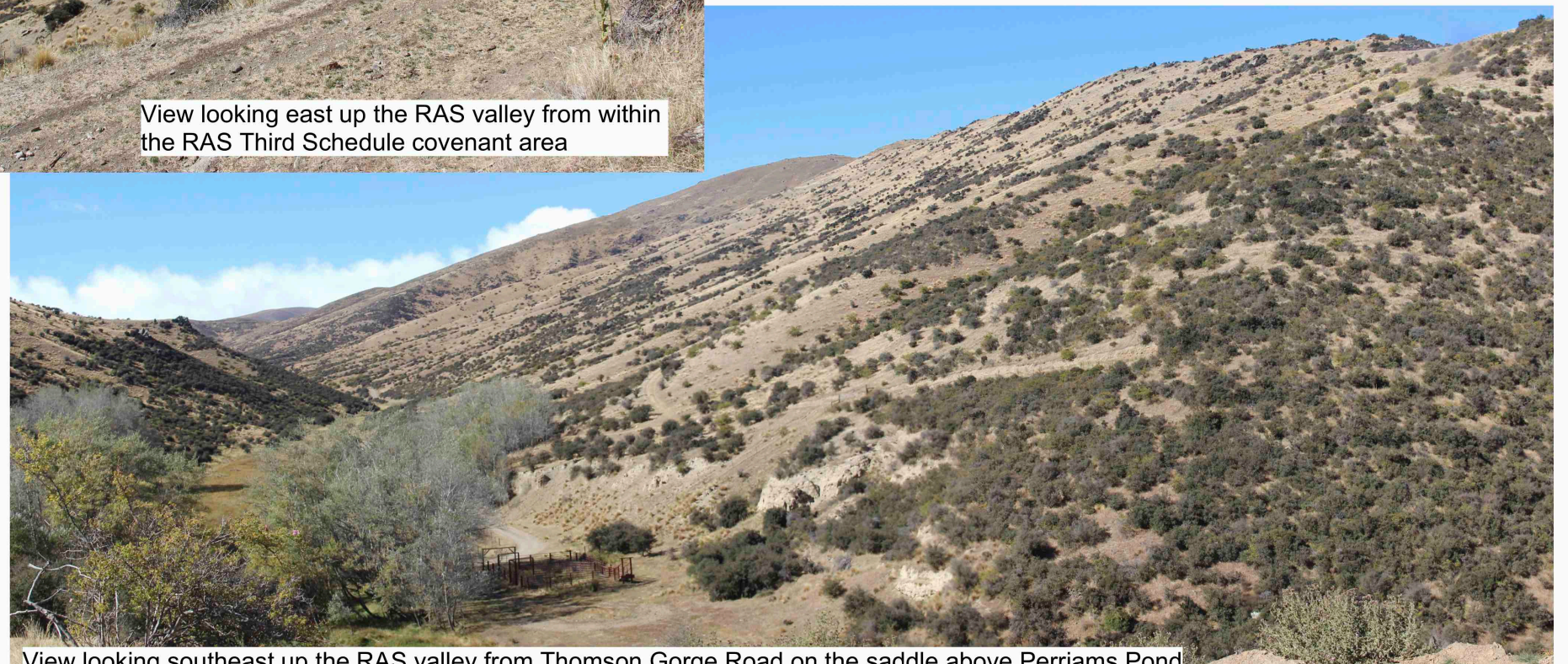


View looking northwest down the true right ridge of the RAS valley from within the RAS Third Schedule covenant area



View looking east up the RAS valley from within the RAS Third Schedule covenant area

Aerial Photos: A Steven March 19 2026
Landbased views: A Steven March 18 2026



View looking southeast up the RAS valley from Thomson Gorge Road on the saddle above Perriams Pond

west edge of the Site (RAS valley)

Battery Hill

VIEW OF THE RISE AND SHINE VALLEY AND THOMSON GORGE FAULT LINE
FROM SH6 AT QUEENSBERRY HILLS (PHOTO: A STEVEN AUGUST 2025 32MM 50MM EQUIV FL)



Aerial Imagery of the Site
1958
Source; Retrolens





Google Earth Image of the Site and Surrounds dated November 2024



Pimelea aridula shrubs just above Thomson Gorge Road in cushionfield



Sarsen stones in Thomson Gorge Road cutting



Beautiful lighting across the moraine terraces a transient perceptual value



dense grey shrubland above intact Carex swamp in Rise and Shine Creek all of which would be removed by the Rise and Shine Open Pit

