



Revisions

FOR RESOURCE CONSENT

NOT FOR CONSTRUCTION

Disclaimer

This document has been prepared by Blac Limited on the following basis:
 A. It is based on the specific instructions provided to Blac Limited by its client.
 B. It is for Blac Limited's client's use in accordance with agreed scope of work between that client and Blac Limited.
 C. Blac Limited does not accept any liability in relation to any third party's use of this document or any part of this document.
 D. Where information has been supplied by Blac Limited's client or obtained from other external sources, Blac Limited has assumed that such information is accurate, without any further investigation.
 E. Blac Limited does not accept any liability or responsibility for any errors or omissions that relate to or arise from inaccurate information provided by their client or any external source.
 F. All contractors other than Blac Limited are:
 L responsible for verifying all dimensions on site and confirming the location of all underground services on site prior to commencing any work.
 N not to rely on any dimensions set out by Blac Limited in this document.

True North



Scale 1:500@A1 1:1000@A3

LANDSCAPE + ECOLOGY PLANS_ SHEET 15

L2.24

Sheet No. ©2026

- GENERAL PLANTING (REFER TO L5.0 + L5.01)**
- H1 RAINGARDENS (RG-#)
 - H2A RETENTION WETLANDS + MARGINS - UPPER BANK
 - H2B RETENTION WETLANDS + MARGINS - LOWER BANK/ AQUATIC
 - H3 STORMWATER RESERVE ARBORETUM MIX
 - H4 ENTRANCE MIX
 - H5 ACCESS LANE + JOAL MIX
 - H6 FILL SLOPES + RESIDUAL LAND + STAGE 2 - ENRICHMENT
 - H7 SNA 5m BUFFER MIX (PLANTED WHERE NECESSARY)
 - H8 SNA FILL MIX
 - H9 LIZARD RELOCATION OFFSET AREAS MIX
 - H10 WESTERN KAKAHO REVEGETATION MIX
 - H11 WETLAND GULLY MIX
 - H12 WETLAND RIPARIAN MIX
 - LAND LEFT TO REGENERATE
 - ECOLOGICAL COVENANTED AREAS
 - PROPOSED TREE (REFER PLANTING PLANS)
 - EXISTING TREE - APPROXIMATE DRIPLINE/ ROOTZONE
 - EXISTING TREE - REMOVED
- STREET PLANTING (REFER TO L5.02 + L5.03)**
- PROPOSED SPECIMEN TREES (REFER TO SCHEDULES FOR ALL TAGS)
 - G1 COLLECTOR STREETS - ACROSS DEVELOPMENT
 - G2 NEIGHBOURHOOD STREETS - LOWER TERRACE
 - G3 NEIGHBOURHOOD STREETS - UPPER TERRACE
 - G4 NEIGHBOURHOOD STREETS - LUCAS BLOCK
 - G5 NEIGHBOURHOOD CENTRE
 - G6 PARKS AND RESERVES
 - HYDROSEEDED GRASS
- STORMWATER (REFER TO ENVELOPE)**
- PERMANENT WATER LINE (REFER TO ENGINEER)
 - 1:100 YEAR EVENT LINE (REFER TO ENGINEER)
- ADDITIONAL ELEMENTS**
- PLAY AREA (REFER TO STRATEGY)
 - ON-GROUND TRAIL + MAINTENANCE ACCESS (REFER TO STRATEGY) (INDICATIVE - TBC ON-SITE) (EXACT ALIGNMENT OF TRAILS TO BE CONFIRMED)
 - BOARDWALK (REFER TO STRATEGY)



1 LANDSCAPE + ECOLOGY PLANS - SHEET 17
 L2.0 Scale: 1:500@A1 1:1000@A3

- GENERAL PLANTING (REFER TO L5.0 + L5.01)**
- H1 RAINGARDENS (RG-#)
 - H2A RETENTION WETLANDS + MARGINS - UPPER BANK
 - H2B RETENTION WETLANDS + MARGINS - LOWER BANK/ AQUATIC
 - H3 STORMWATER RESERVE ARBORETUM MIX
 - H4 ENTRANCE MIX
 - H5 ACCESS LANE + JOAL MIX
 - H6 FILL SLOPES + RESIDUAL LAND + STAGE 2 - ENRICHMENT
 - H7 SNA 5m BUFFER MIX (PLANTED WHERE NECESSARY)
 - H8 SNA FILL MIX
 - H9 LIZARD RELOCATION OFFSET AREAS MIX
 - H10 WESTERN KAKAHO REVEGETATION MIX
 - H11 WETLAND GULLY MIX
 - H12 WETLAND RIPARIAN MIX
 - LAND LEFT TO REGENERATE
 - ECOLOGICAL COVENANTED AREAS
 - PROPOSED TREE (REFER PLANTING PLANS)
 - EXISTING TREE - APPROXIMATE DRIPLINE/ ROOTZONE
 - EXISTING TREE - REMOVED
- STREET PLANTING (REFER TO L5.02 + L5.03)**
- G1 PROPOSED SPECIMEN TREES (REFER TO SCHEDULES FOR ALL TAGS)
 - G2 COLLECTOR STREETS - ACROSS DEVELOPMENT
 - G3 NEIGHBOURHOOD STREETS - LOWER TERRACE
 - G4 NEIGHBOURHOOD STREETS - UPPER TERRACE
 - G5 NEIGHBOURHOOD STREETS - LUCAS BLOCK
 - G6 NEIGHBOURHOOD CENTRE
 - G7 PARKS AND RESERVES
 - HYDROSEEDED GRASS
- STORMWATER (REFER TO ENVELOPE)**
- PERMANENT WATER LINE (REFER TO ENGINEER)
 - 1:100 YEAR EVENT LINE (REFER TO ENGINEER)
- ADDITIONAL ELEMENTS**
- PLAY AREA (REFER TO STRATEGY)
 - ON-GROUND TRAIL + MAINTENANCE ACCESS (REFER TO STRATEGY) (INDICATIVE - TBC ON-SITE) (EXACT ALIGNMENT OF TRAILS TO BE CONFIRMED)
 - BOARDWALK (REFER TO STRATEGY)

13.03.2026

Revisions

FOR RESOURCE CONSENT

NOT FOR CONSTRUCTION

Disclaimer

This document has been prepared by Blac Limited on the following basis:

A. It is based on the specific instructions provided to Blac Limited by its Client.

B. It is for Blac Limited's client's use in accordance with agreed scope of work between that client and Blac Limited.

C. Blac Limited does not accept any liability in relation to any third party's use of this document or any part of this document.

D. Where information has been supplied to Blac Limited's client or obtained from other external sources, Blac Limited has assumed that such information is accurate, without any further investigation.

E. Blac Limited does not accept any liability or responsibility for any errors or omissions that relate to or arise from inaccurate information provided by their clients or any external source.

F. All contractors other than Blac Limited are responsible for verifying all dimensions on site and confirming the location of all underground services on site prior to commencing any work.

Blac Limited will not rely on any dimensions set out by Blac Limited in this document.

True North



Revisions

FOR RESOURCE CONSENT

NOT FOR CONSTRUCTION

Disclaimer

This document has been prepared by Blac Limited on the following basis:
A. It is based on the specific instructions provided to Blac Limited by its client.
B. It is for Blac Limited's client's use in accordance with agreed scope of work between that client and Blac Limited.
C. Blac Limited does not accept any liability in relation to any third party's use of this document or any part of this document.
D. Where information has been supplied by Blac Limited's client or obtained from other external sources, Blac Limited has assumed that such information is accurate, without any further investigation.
E. Blac Limited does not accept any liability or responsibility for any errors or omissions that relate to or arise from inaccurate information provided by their clients or any external source.
F. All contractors other than Blac Limited are:
L responsible for verifying all dimensions on site and confirming the location of all underground services on site prior to commencing any work.
I not to rely on any dimensions set out by Blac Limited in this document.

True North

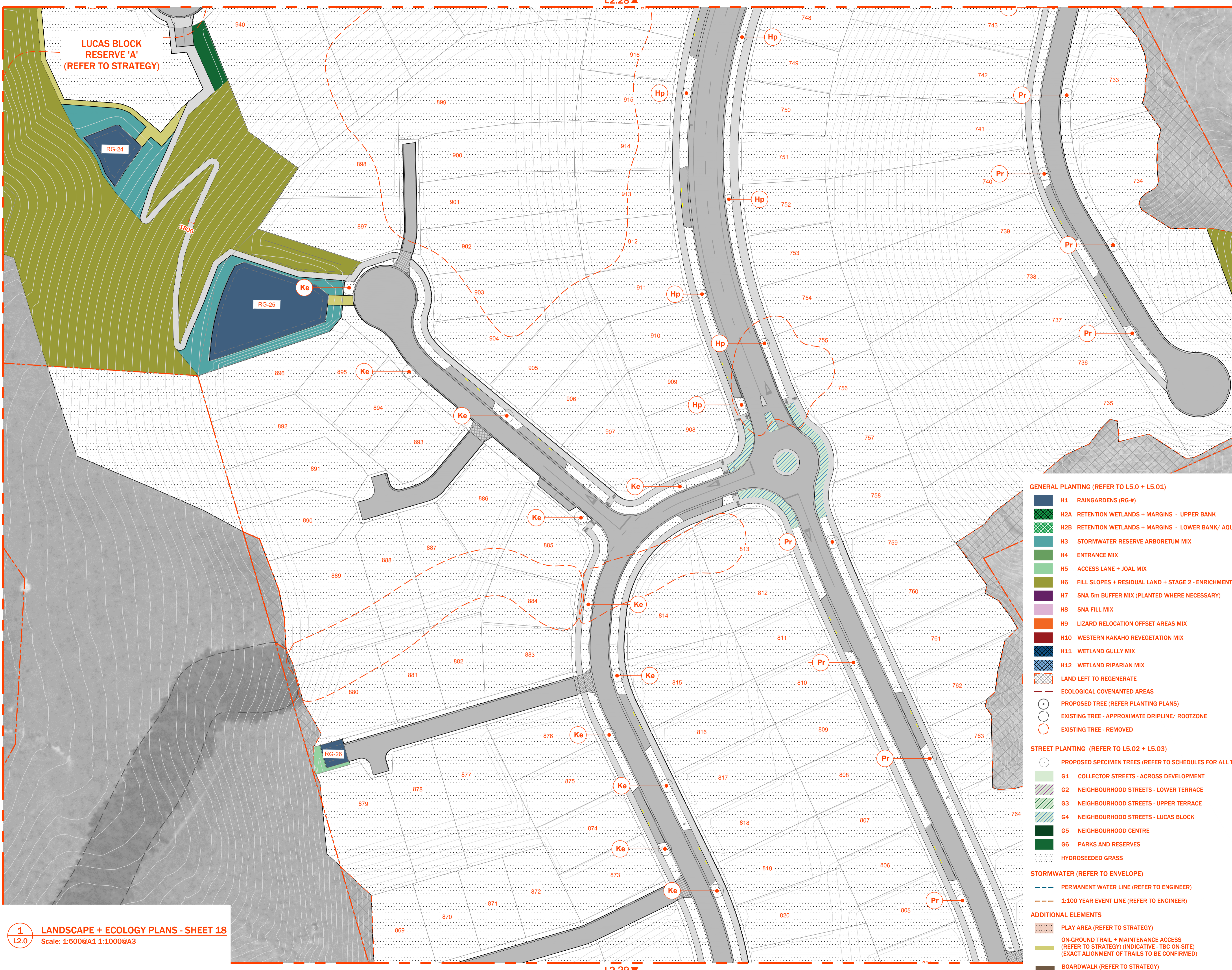


Scale 1:500@A1 1:1000@A3

LANDSCAPE +
ECOLOGY PLANS_
SHEET 18

L2.27

Sheet No. ©2026



- GENERAL PLANTING (REFER TO L5.0 + L5.01)**
- H1 RAINGARDENS (RG-#)
 - H2A RETENTION WETLANDS + MARGINS - UPPER BANK
 - H2B RETENTION WETLANDS + MARGINS - LOWER BANK/ AQUATIC
 - H3 STORMWATER RESERVE ARBORETUM MIX
 - H4 ENTRANCE MIX
 - H5 ACCESS LANE + JOAL MIX
 - H6 FILL SLOPES + RESIDUAL LAND + STAGE 2 - ENRICHMENT
 - H7 SNA 5m BUFFER MIX (PLANTED WHERE NECESSARY)
 - H8 SNA FILL MIX
 - H9 LIZARD RELOCATION OFFSET AREAS MIX
 - H10 WESTERN KAKAHO REVEGETATION MIX
 - H11 WETLAND GULLY MIX
 - H12 WETLAND RIPARIAN MIX
 - LAND LEFT TO REGENERATE
 - ECOLOGICAL COVENANTED AREAS
 - PROPOSED TREE (REFER PLANTING PLANS)
 - EXISTING TREE - APPROXIMATE DRIPLINE/ ROOTZONE
 - EXISTING TREE - REMOVED
- STREET PLANTING (REFER TO L5.02 + L5.03)**
- G1 PROPOSED SPECIMEN TREES (REFER TO SCHEDULES FOR ALL TAGS)
 - G2 COLLECTOR STREETS - ACROSS DEVELOPMENT
 - G3 NEIGHBOURHOOD STREETS - LOWER TERRACE
 - G4 NEIGHBOURHOOD STREETS - UPPER TERRACE
 - G5 NEIGHBOURHOOD CENTRE
 - G6 PARKS AND RESERVES
 - HYDROSEEDDED GRASS
- STORMWATER (REFER TO ENVELOPE)**
- PERMANENT WATER LINE (REFER TO ENGINEER)
 - 1:100 YEAR EVENT LINE (REFER TO ENGINEER)
- ADDITIONAL ELEMENTS**
- PLAY AREA (REFER TO STRATEGY)
 - ON-GROUND TRAIL + MAINTENANCE ACCESS (REFER TO STRATEGY) (INDICATIVE - TBC ON-SITE) (EXACT ALIGNMENT OF TRAILS TO BE CONFIRMED)
 - BOARDWALK (REFER TO STRATEGY)



Revisions
FOR RESOURCE CONSENT

NOT FOR CONSTRUCTION

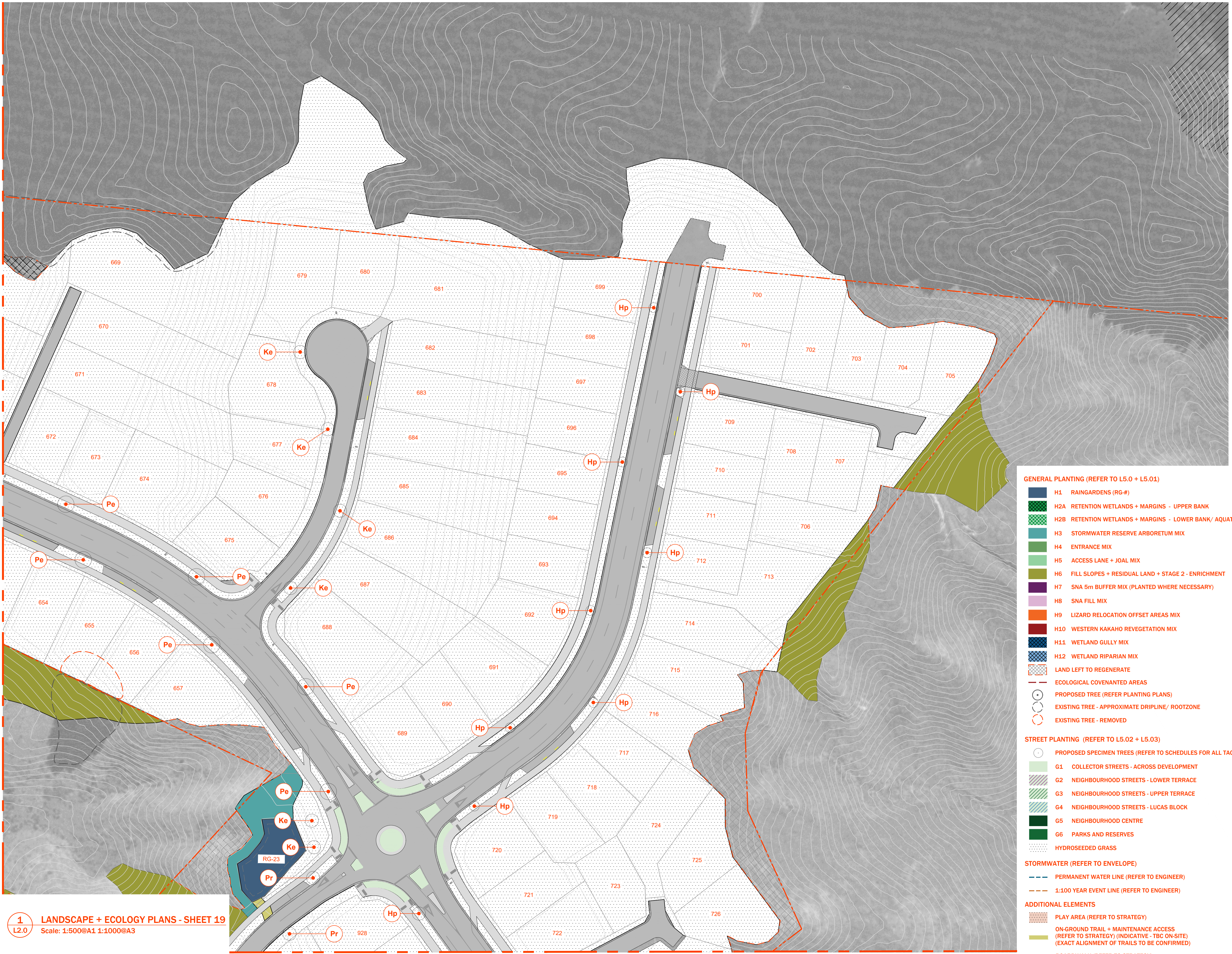
Disclaimer
This document has been prepared by Blac Limited on the following basis:
A. It is based on the specific instructions provided to Blac Limited by its client.
B. It is for Blac Limited's client's use in accordance with agreed scope of work between that client and Blac Limited.
C. Blac Limited does not accept any liability in relation to any third party's use of this document or any part of this document.
D. Where information has been supplied by Blac Limited's client or obtained from other external sources, Blac Limited has assumed that such information is accurate, without any further investigation.
E. Blac Limited does not accept any liability or responsibility for any errors or omissions that relate to or arise from inaccurate information provided by their client or any external source.
F. All contractors other than Blac Limited are responsible for verifying all dimensions on site and confirming the location of all underground services on site prior to commencing any work.
Not to rely on any dimensions set out by Blac Limited in this document.
True North

Scale 1:500@A1 1:1000@A3

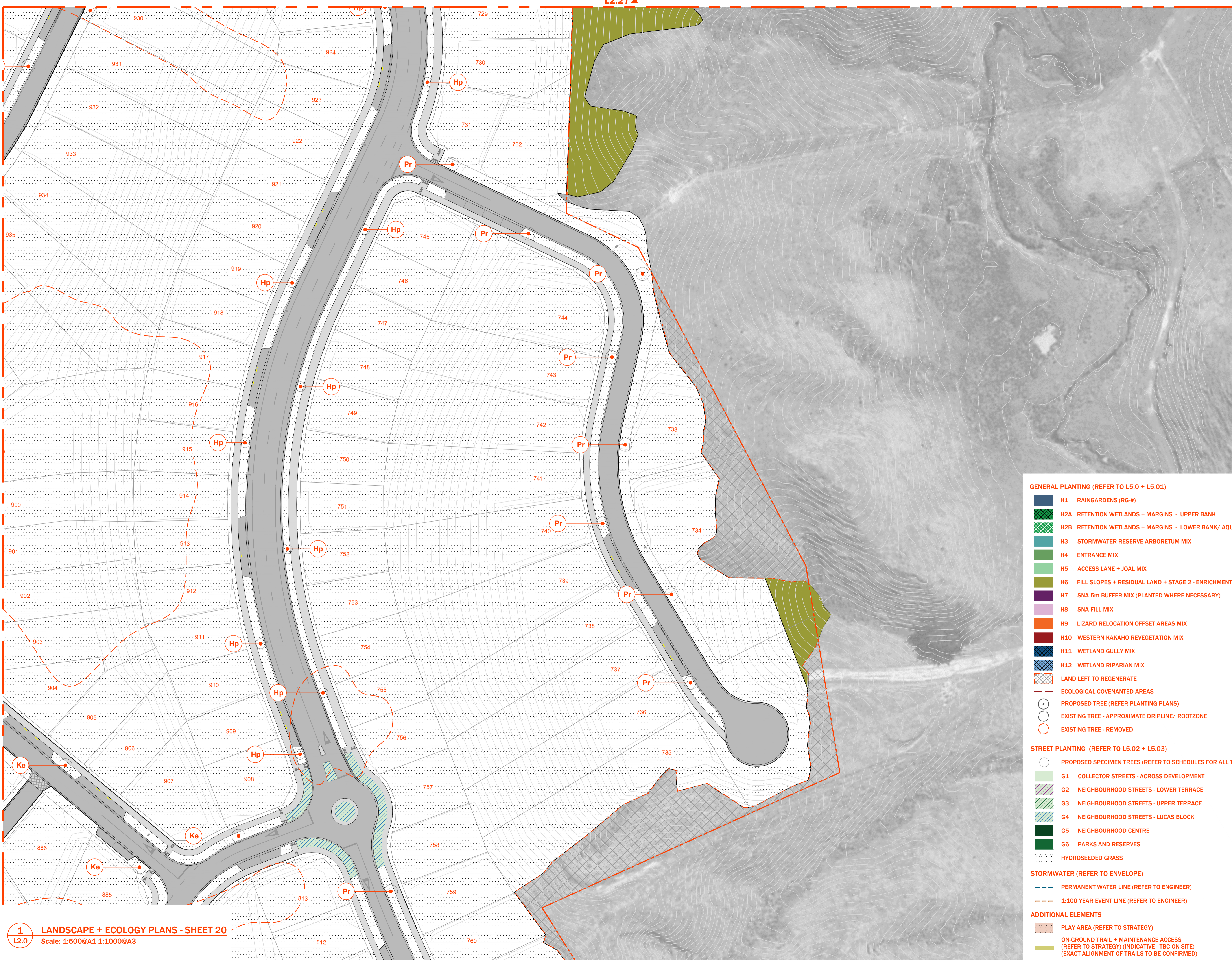
LANDSCAPE + ECOLOGY PLANS,
SHEET 19

L2.28

Sheet No. ©2026



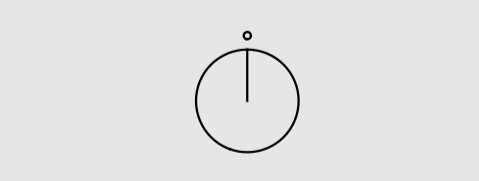
- GENERAL PLANTING (REFER TO L5.0 + L5.01)**
- H1 RAINGARDENS (RG-#)
 - H2A RETENTION WETLANDS + MARGINS - UPPER BANK
 - H2B RETENTION WETLANDS + MARGINS - LOWER BANK/ AQUATIC
 - H3 STORMWATER RESERVE ARBORETUM MIX
 - H4 ENTRANCE MIX
 - H5 ACCESS LANE + JOAL MIX
 - H6 FILL SLOPES + RESIDUAL LAND + STAGE 2 - ENRICHMENT
 - H7 SNA 5m BUFFER MIX (PLANTED WHERE NECESSARY)
 - H8 SNA FILL MIX
 - H9 LIZARD RELOCATION OFFSET AREAS MIX
 - H10 WESTERN KAKAHO REVEGETATION MIX
 - H11 WETLAND GULLY MIX
 - H12 WETLAND RIPARIAN MIX
 - LAND LEFT TO REGENERATE
 - ECOLOGICAL COVENANTED AREAS
 - PROPOSED TREE (REFER PLANTING PLANS)
 - EXISTING TREE - APPROXIMATE DRIPLINE/ ROOTZONE
 - EXISTING TREE - REMOVED
- STREET PLANTING (REFER TO L5.02 + L5.03)**
- G1 COLLECTOR STREETS - ACROSS DEVELOPMENT
 - G2 NEIGHBOURHOOD STREETS - LOWER TERRACE
 - G3 NEIGHBOURHOOD STREETS - UPPER TERRACE
 - G4 NEIGHBOURHOOD STREETS - LUCAS BLOCK
 - G5 NEIGHBOURHOOD CENTRE
 - G6 PARKS AND RESERVES
 - HYDROSEEDED GRASS
- STORMWATER (REFER TO ENVELOPE)**
- PERMANENT WATER LINE (REFER TO ENGINEER)
 - 1:100 YEAR EVENT LINE (REFER TO ENGINEER)
- ADDITIONAL ELEMENTS**
- PLAY AREA (REFER TO STRATEGY)
 - ON-GROUND TRAIL + MAINTENANCE ACCESS (REFER TO STRATEGY) (INDICATIVE - TBC ON-SITE) (EXACT ALIGNMENT OF TRAILS TO BE CONFIRMED)
 - BOARDWALK (REFER TO STRATEGY)



Revisions
 FOR RESOURCE CONSENT

NOT FOR CONSTRUCTION

Disclaimer
 This document has been prepared by Blac Limited on the following basis:
 A. It is based on the specific instructions provided to Blac Limited by its client.
 B. It is for Blac Limited's client's use in accordance with agreed scope of work between that client and Blac Limited.
 C. Blac Limited does not accept any liability in relation to any third party's use of this document or any part of this document.
 D. Where information has been supplied to Blac Limited's client or obtained from other external sources, Blac Limited has assumed that such information is accurate, without any further investigation.
 E. Blac Limited does not accept any liability or responsibility for any errors or omissions that relate to or arise from inaccurate information provided by their clients or any external source.
 F. All contractors other than Blac Limited are responsible for verifying all dimensions on site and confirming the location of all underground services on site prior to commencing any work.
 Blac Limited is not to rely on any dimensions set out by Blac Limited in this document.



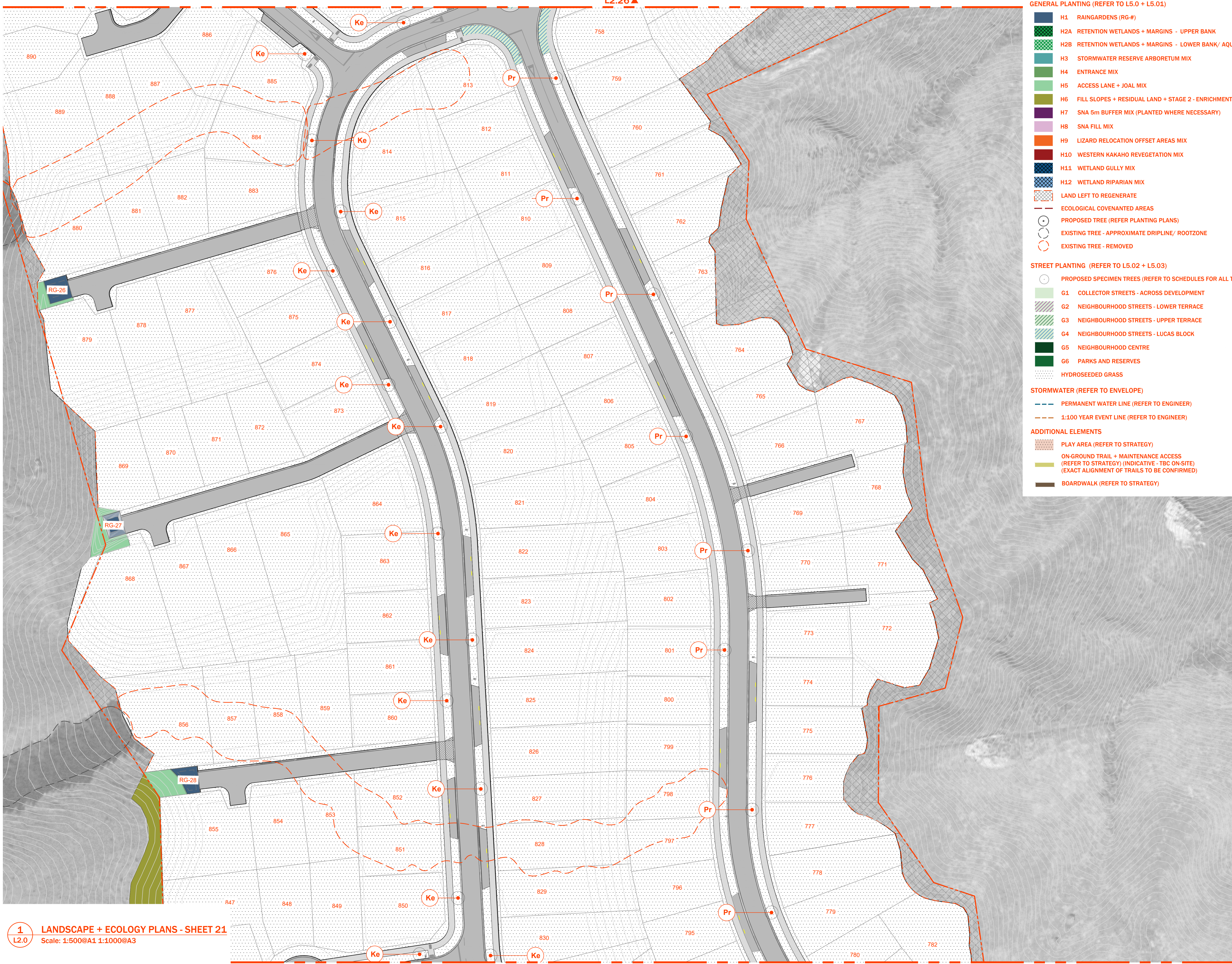
Scale 1:500@A1 1:1000@A3

LANDSCAPE + ECOLOGY PLANS_ SHEET 20

L2.29

Sheet No. ©2026

- GENERAL PLANTING (REFER TO L5.0 + L5.01)**
- H1 RAINGARDENS (RG-#)
 - H2A RETENTION WETLANDS + MARGINS - UPPER BANK
 - H2B RETENTION WETLANDS + MARGINS - LOWER BANK/ AQUATIC
 - H3 STORMWATER RESERVE ARBORETUM MIX
 - H4 ENTRANCE MIX
 - H5 ACCESS LANE + JOAL MIX
 - H6 FILL SLOPES + RESIDUAL LAND + STAGE 2 - ENRICHMENT
 - H7 SNA 5m BUFFER MIX (PLANTED WHERE NECESSARY)
 - H8 SNA FILL MIX
 - H9 LIZARD RELOCATION OFFSET AREAS MIX
 - H10 WESTERN KAKAHO REVEGETATION MIX
 - H11 WETLAND GULLY MIX
 - H12 WETLAND RIPARIAN MIX
 - LAND LEFT TO REGENERATE
 - ECOLOGICAL COVENANTED AREAS
 - PROPOSED TREE (REFER PLANTING PLANS)
 - EXISTING TREE - APPROXIMATE DRIPLINE/ ROOTZONE
 - EXISTING TREE - REMOVED
- STREET PLANTING (REFER TO L5.02 + L5.03)**
- PROPOSED SPECIMEN TREES (REFER TO SCHEDULES FOR ALL TAGS)
 - G1 COLLECTOR STREETS - ACROSS DEVELOPMENT
 - G2 NEIGHBOURHOOD STREETS - LOWER TERRACE
 - G3 NEIGHBOURHOOD STREETS - UPPER TERRACE
 - G4 NEIGHBOURHOOD STREETS - LUCAS BLOCK
 - G5 NEIGHBOURHOOD CENTRE
 - G6 PARKS AND RESERVES
 - HYDROSEEDED GRASS
- STORMWATER (REFER TO ENVELOPE)**
- PERMANENT WATER LINE (REFER TO ENGINEER)
 - 1:100 YEAR EVENT LINE (REFER TO ENGINEER)
- ADDITIONAL ELEMENTS**
- PLAY AREA (REFER TO STRATEGY)
 - ON-GROUND TRAIL + MAINTENANCE ACCESS (REFER TO STRATEGY) (INDICATIVE - TBC ON-SITE) (EXACT ALIGNMENT OF TRAILS TO BE CONFIRMED)
 - BOARDWALK (REFER TO STRATEGY)



- GENERAL PLANTING (REFER TO L5.0 + L5.01)**
- H1 RAINGARDENS (RG-#)
 - H2A RETENTION WETLANDS + MARGINS - UPPER BANK
 - H2B RETENTION WETLANDS + MARGINS - LOWER BANK/ AQUATIC
 - H3 STORMWATER RESERVE ARBORETUM MIX
 - H4 ENTRANCE MIX
 - H5 ACCESS LANE + JOAL MIX
 - H6 FILL SLOPES + RESIDUAL LAND + STAGE 2 - ENRICHMENT
 - H7 SNA 5m BUFFER MIX (PLANTED WHERE NECESSARY)
 - H8 SNA FILL MIX
 - H9 LIZARD RELOCATION OFFSET AREAS MIX
 - H10 WESTERN KAKAHO REVEGETATION MIX
 - H11 WETLAND GULLY MIX
 - H12 WETLAND RIPARIAN MIX
 - LAND LEFT TO REGENERATE
 - ECOLOGICAL COVENANTED AREAS
 - PROPOSED TREE (REFER PLANTING PLANS)
 - EXISTING TREE - APPROXIMATE DRIPLINE/ ROOTZONE
 - EXISTING TREE - REMOVED
- STREET PLANTING (REFER TO L5.02 + L5.03)**
- PROPOSED SPECIMEN TREES (REFER TO SCHEDULES FOR ALL TAGS)
 - G1 COLLECTOR STREETS - ACROSS DEVELOPMENT
 - G2 NEIGHBOURHOOD STREETS - LOWER TERRACE
 - G3 NEIGHBOURHOOD STREETS - UPPER TERRACE
 - G4 NEIGHBOURHOOD STREETS - LUCAS BLOCK
 - G5 NEIGHBOURHOOD CENTRE
 - G6 PARKS AND RESERVES
 - HYDROSEEDED GRASS
- STORMWATER (REFER TO ENVELOPE)**
- PERMANENT WATER LINE (REFER TO ENGINEER)
 - 1:100 YEAR EVENT LINE (REFER TO ENGINEER)
- ADDITIONAL ELEMENTS**
- PLAY AREA (REFER TO STRATEGY)
 - ON-GROUND TRAIL + MAINTENANCE ACCESS (REFER TO STRATEGY) (INDICATIVE - TBC ON-SITE) (EXACT ALIGNMENT OF TRAILS TO BE CONFIRMED)
 - BOARDWALK (REFER TO STRATEGY)

blac.

MT. WELCOME
LANDSCAPE + ECOLOGY PLANS

Project No.058 2026.03

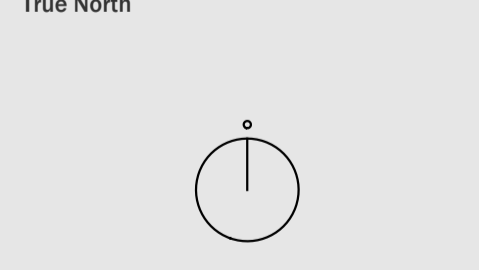


Revisions

NOT FOR CONSTRUCTION

FOR RESOURCE CONSENT

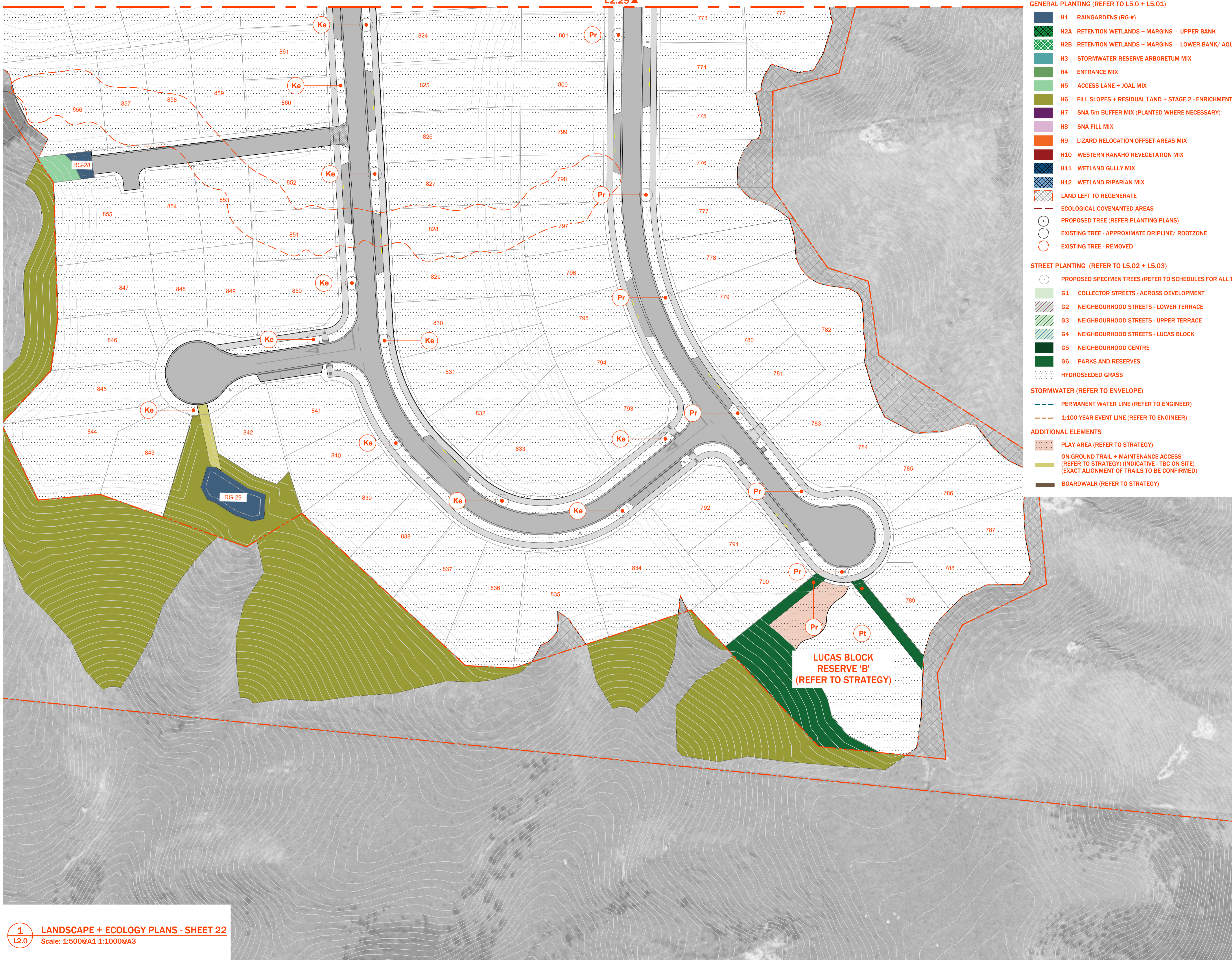
Disclaimer
 This document has been prepared by Blac Limited on the following basis:
 A. It is based on the specific instructions provided to Blac Limited by its client.
 B. It is for Blac Limited's client's use in accordance with agreed scope of work between that client and Blac Limited.
 C. Blac Limited does not accept any liability in relation to any third party's use of this document or any part of this document.
 D. Where information has been supplied to Blac Limited's client or obtained from other external sources, Blac Limited has assumed that such information is accurate, without any further investigation.
 E. Blac Limited does not accept any liability or responsibility for any errors or omissions that relate to or arise from inaccurate information provided by their clients or any external source.
 F. All contractors other than Blac Limited are responsible for verifying all dimensions on site and confirming the location of all underground services on site prior to commencing any work.
 It is not to rely on any dimensions set out by Blac Limited in this document.



Scale 1:500@A1 1:1000@A3

LANDSCAPE + ECOLOGY PLANS_ SHEET 21

L2.30



- GENERAL PLANTING (REFER TO L5.0 + L5.01)**
- H1 RAINGARDENS (RG-#)
 - H2A RETENTION WETLANDS + MARGINS - UPPER BANK
 - H2B RETENTION WETLANDS + MARGINS - LOWER BANK/ AQUATIC
 - H3 STORMWATER RESERVE ARBORETUM MIX
 - H4 ENTRANCE MIX
 - H5 ACCESS LANE + JOAL MIX
 - H6 FILL SLOPES + RESIDUAL LAND + STAGE 2 - ENRICHMENT
 - H7 SNA 5m BUFFER MIX (PLANTED WHERE NECESSARY)
 - H8 SNA FILL MIX
 - H9 LIZARD RELOCATION OFFSET AREAS MIX
 - H10 WESTERN KAKAHO REVEGETATION MIX
 - H11 WETLAND GULLY MIX
 - H12 WETLAND RIPARIAN MIX
 - LAND LEFT TO REGENERATE
 - ECOLOGICAL COVENANTED AREAS
 - PROPOSED TREE (REFER PLANTING PLANS)
 - EXISTING TREE - APPROXIMATE DRIPLINE/ ROOTZONE
 - EXISTING TREE - REMOVED

- STREET PLANTING (REFER TO L5.02 + L5.03)**
- G1 COLLECTOR STREETS - ACROSS DEVELOPMENT
 - G2 NEIGHBOURHOOD STREETS - LOWER TERRACE
 - G3 NEIGHBOURHOOD STREETS - UPPER TERRACE
 - G4 NEIGHBOURHOOD STREETS - LUCAS BLOCK
 - G5 NEIGHBOURHOOD CENTRE
 - G6 PARKS AND RESERVES
 - HYDROSEEDED GRASS

- STORMWATER (REFER TO ENVELOPE)**
- PERMANENT WATER LINE (REFER TO ENGINEER)
 - 1:100 YEAR EVENT LINE (REFER TO ENGINEER)

- ADDITIONAL ELEMENTS**
- PLAY AREA (REFER TO STRATEGY)
 - ON-GROUND TRAIL + MAINTENANCE ACCESS (REFER TO STRATEGY) (INDICATIVE - TBC ON-SITE) (EXACT ALIGNMENT OF TRAILS TO BE CONFIRMED)
 - BOARDWALK (REFER TO STRATEGY)

Project No.058 2026.03



Revisions

FOR RESOURCE CONSENT

NOT FOR CONSTRUCTION

Disclaimer

This document has been prepared by Blac Limited on the following basis:

A. It is based on the specific instructions provided to Blac Limited by the Client.

B. It is for Blac Limited's client's use in accordance with agreed scope of work between that client and Blac Limited.

C. Blac Limited does not accept any liability in relation to any third party's use of this document or any part of this document.

D. Where information has been supplied to Blac Limited's client by other external sources, Blac Limited has assumed that such information is accurate, without any further investigation.

E. Blac Limited does not accept any liability or responsibility for any errors or omissions that relate to or arise from inaccurate information provided by their clients or any external source.

F. All contractors other than Blac Limited are responsible for verifying all dimensions on site and confirming the location of all underground services on site prior to commencing any work.

Do not rely on any dimensions set out by Blac Limited in this document.

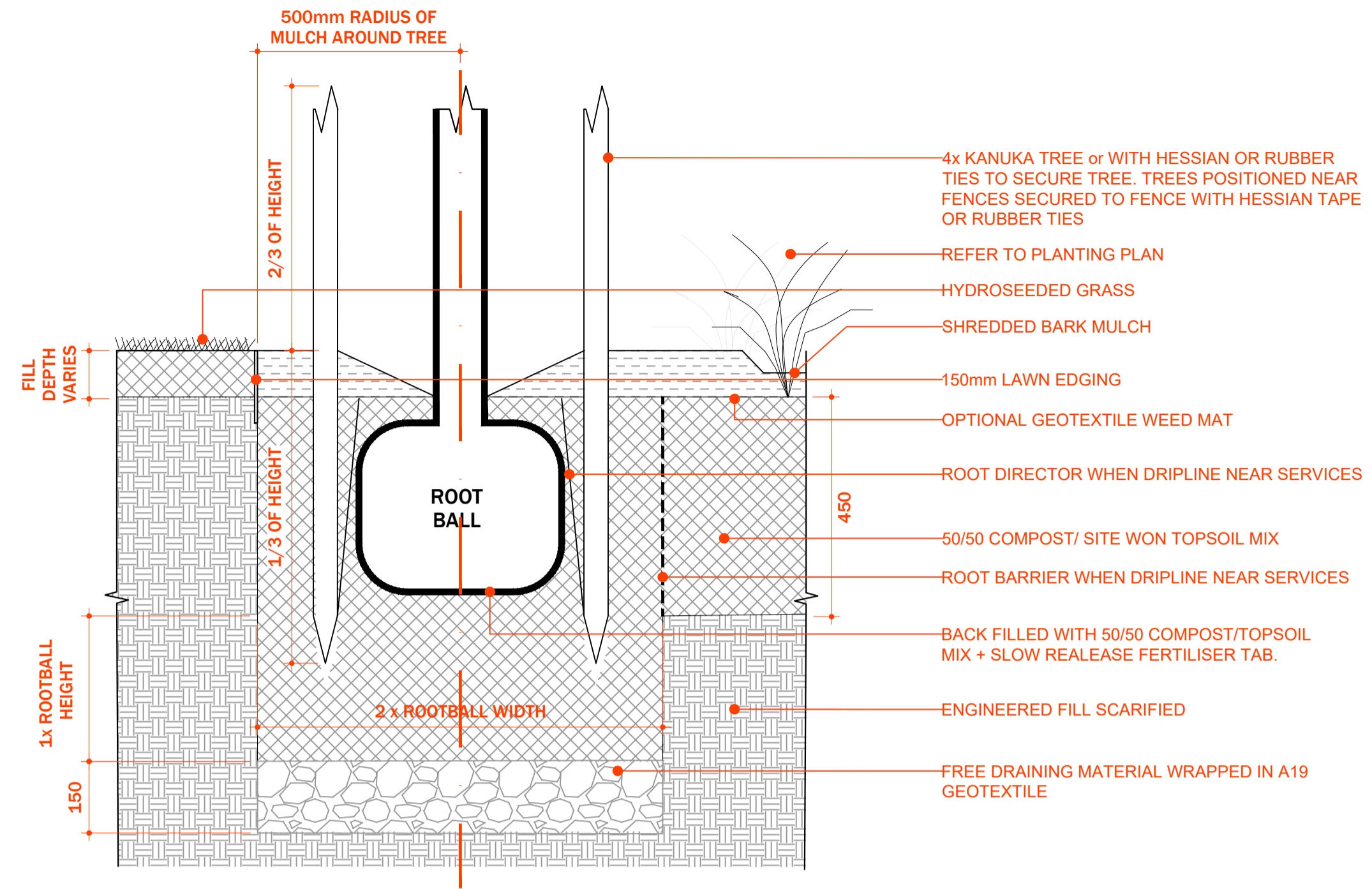
True North

Scale 1:500@A1 1:1000@A3

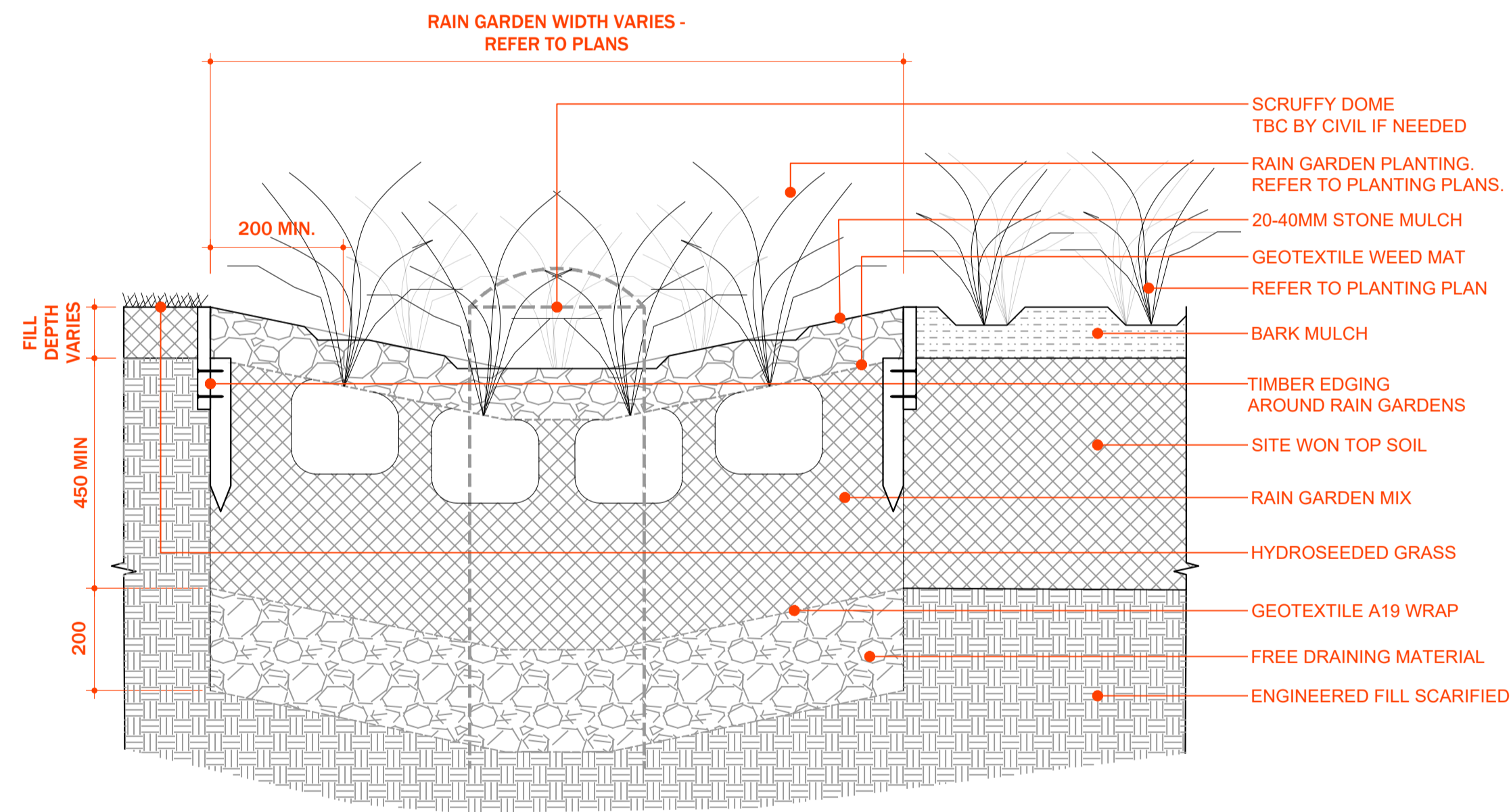
LANDSCAPE + ECOLOGY PLANS_ SHEET 22

L2.31

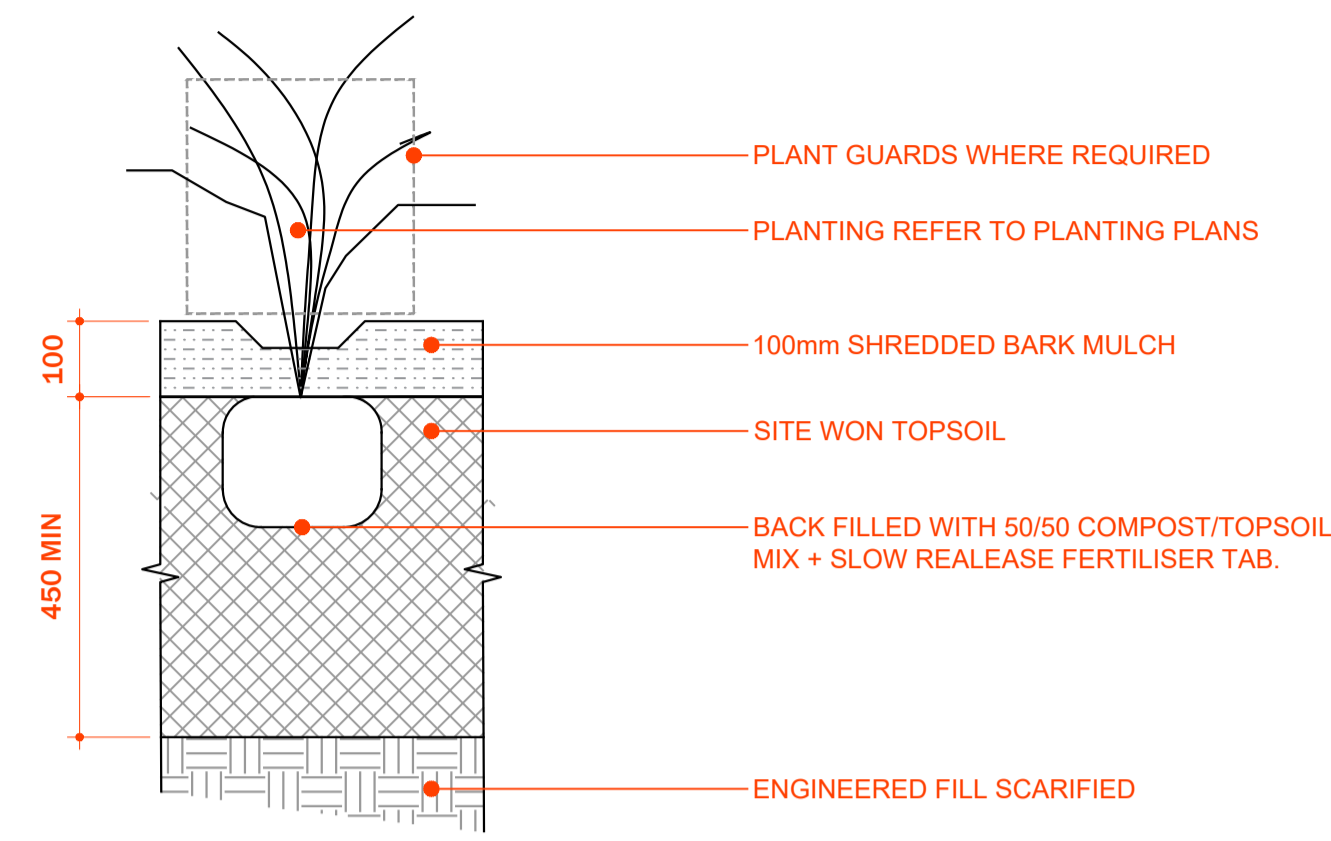
Sheet No. ©2026



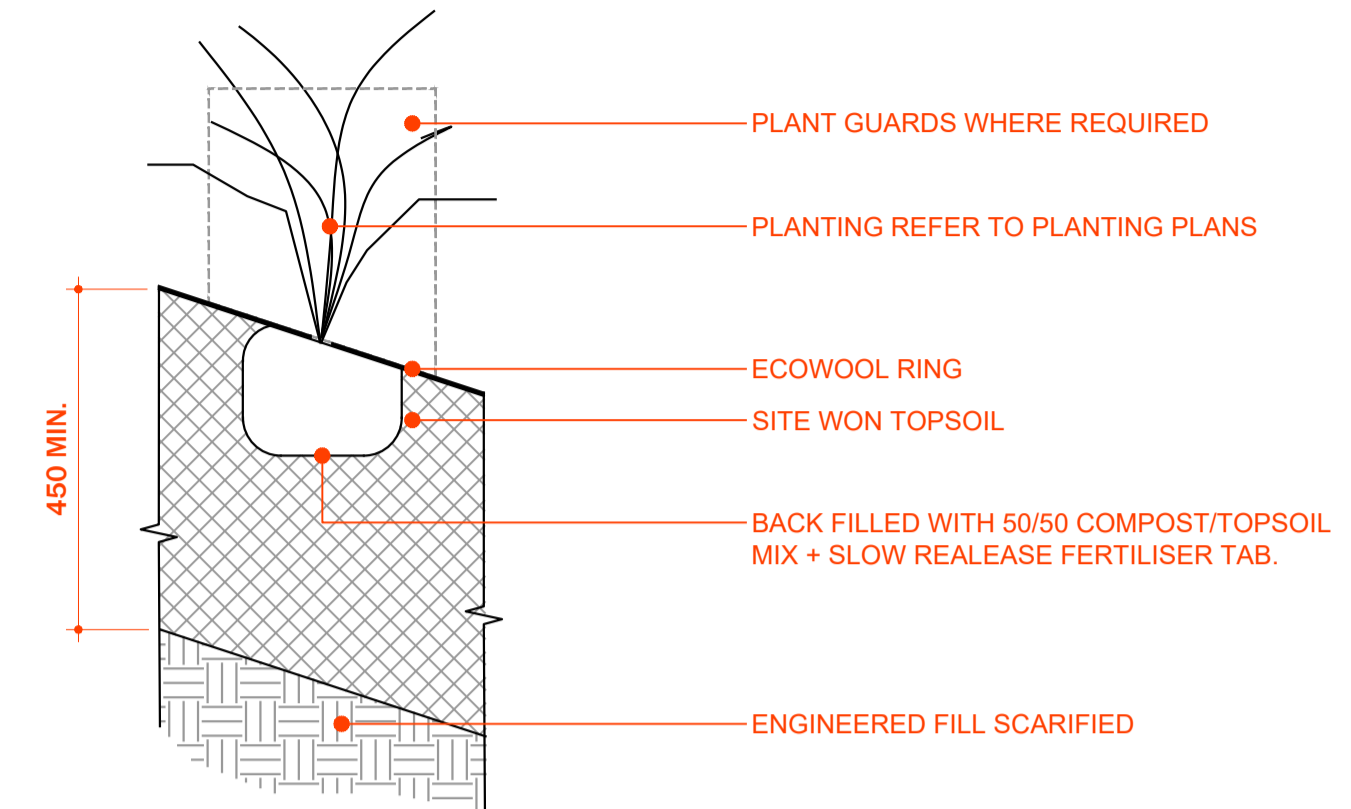
1 TYPICAL SPECIMEN TREE PIT DETAIL
Scale: 1:10 @ A1 1:20 @ A3



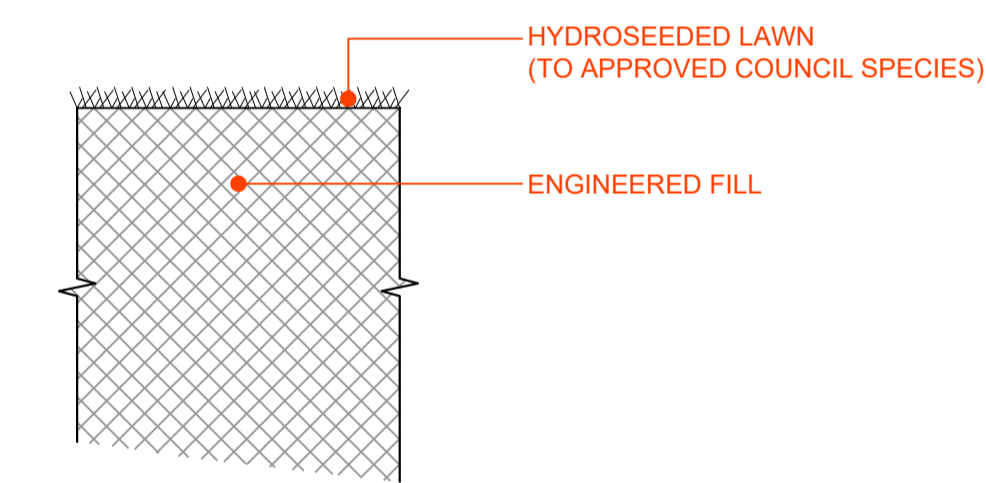
4 TYPICAL RAIN GARDEN DETAIL
Scale: 1:10 @ A1 1:20 @ A3



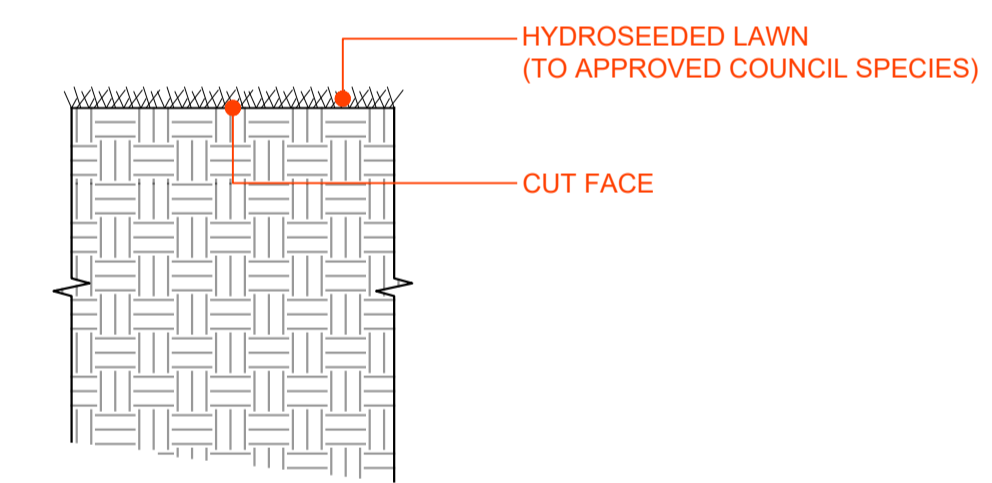
2 TYPICAL PLANTING BED DETAIL
Scale: 1:10 @ A1 1:20 @ A3



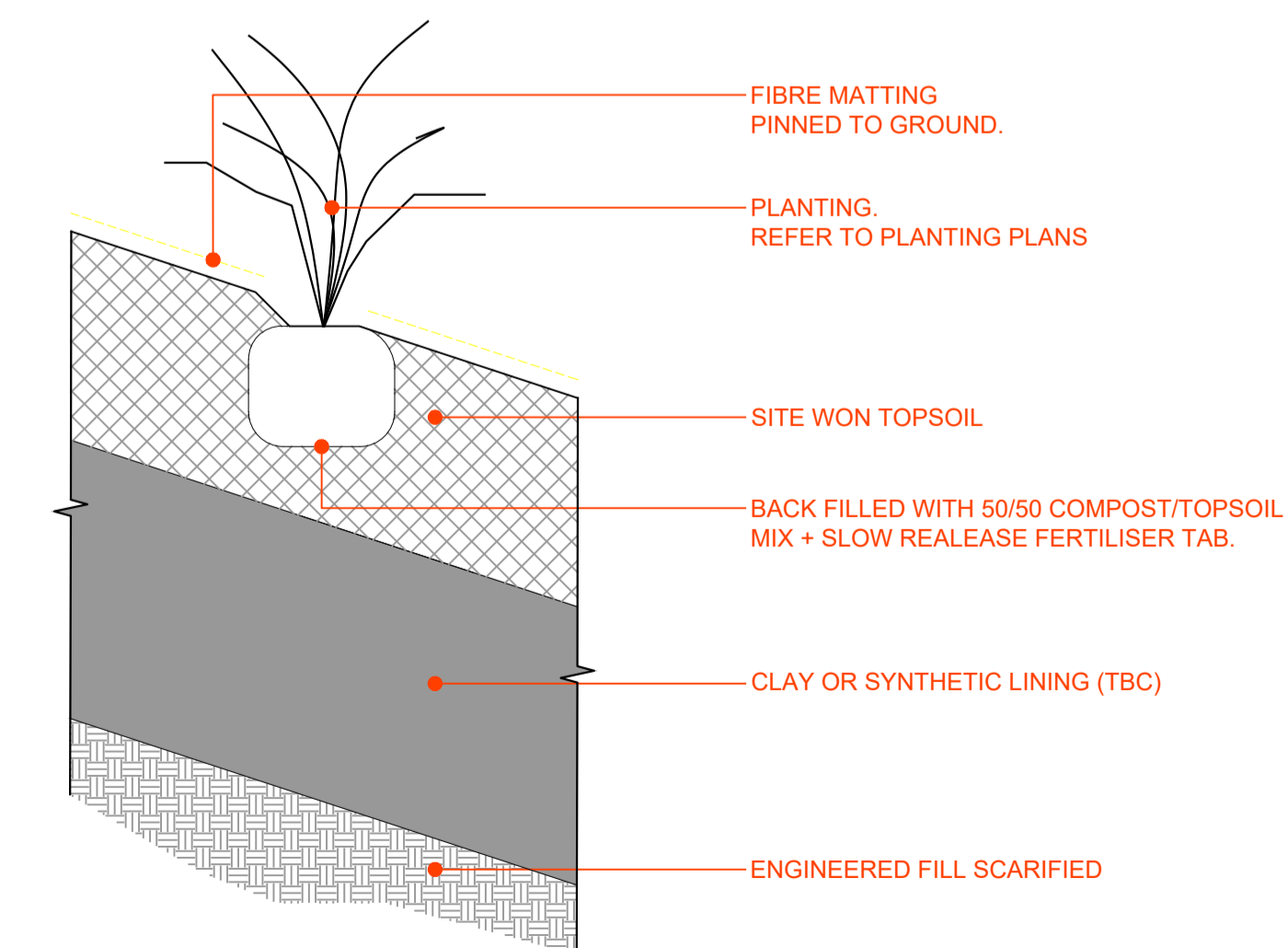
3 TYPICAL SLOPED PLANTING BED DETAIL
Scale: 1:10 @ A1 1:20 @ A3



5 TYPICAL HYDROSEEDED GRASS DETAIL - ENGINEERED FILL
Scale: 1:10 @ A1 1:20 @ A3



6 TYPICAL HYDROSEEDED GRASS DETAIL - CUT FACE
Scale: 1:10 @ A1 1:20 @ A3



7 TYPICAL NEW RETENTION WETLAND DETAIL
Scale: 1:10 @ A1 1:20 @ A3



Revisions
FOR RESOURCE CONSENT

NOT FOR CONSTRUCTION

Disclaimer
This document has been prepared by Blac Limited on the following basis:
A. It is based on the specific instructions provided to Blac Limited by its client.
B. It is for Blac Limited's client's use in accordance with agreed scope of work between that client and Blac Limited.
C. Blac Limited does not accept any liability in relation to any third party's use of this document or any part of this document.
D. Where information has been supplied to Blac Limited's client or obtained from other external sources, Blac Limited has assumed that such information is accurate, without any further investigation.
E. Blac Limited does not accept any liability or responsibility for any errors or omissions that relate to or arise from inaccurate information provided by their clients or any external source.
F. All contractors other than Blac Limited are:
L. responsible for verifying all dimensions on site and confirming the location of all underground services on site prior to commencing any work.
Not to rely on any dimensions set out by Blac Limited in this document.
True North

Scale AS SHOWN

PLANTING DETAILS_

L4.0

Sheet No. ©2026

NOTE: IN AMBEYANCE OF CIVIL ENGINEER SIGN OFF.

Plant Schedule: Mt Welcome - Street Planting												
Code	Botanical Name	Common/ Maori Name	Min Grade	Area (m ²)	Percentage Mix	Quantity	Spacing guide	Spread at maturity (m)	Height at maturity (m)	Remarks		
Specimen Trees												
Hp	<i>Hoheria populnea</i>	Houhere / Lacebark	25L	As shown	N/A	56	As shown	3	8			
Pe	<i>Pittosporum eugenioides</i>	Tarata / Lemonwood	25L			94		5	8			
Ae	<i>Alectryon excelsus</i>	Titoki	25L			42		5	10			
St	<i>Sophora tetraptera</i>	Large Leaved Kōwhai	25L			34		4	10			
Pa	<i>Pseudopanax arboreus</i>	Whauwhaupaku / Five-finger	25L			34		3	5			
Pr	<i>Plagianthus regius</i>	Mānatu / Ribbonwood	25L			45		4	10			
Ke	<i>Kunzea ericoides</i>	Kānuka	25L			29		4	8			
Pc	<i>Pseudopanax crassifolius</i>	Horoeke / Lancewood	25L			9		3	5			
Pt	<i>Podocarpus totara</i>	Tōtara	25L			1		5	20			
Ds	<i>Dysoxylum spectabile</i>	Kohekohe	25L			1		6	10			
Ca	<i>Cordyline australis</i>	TI kōuka / Cabbage Tree	25L	9	3	8						
						364						
G1 Collector Streets - Across development Mix												
	<i>Poa cita</i>	Silver Tussock	PB3	1005	40%	5156	@ 0.3m Ctrs	0.5	0.6			
	<i>Leptinella dioica</i>	Button Cotula	PB3		15%	309	@0.75m Ctrs	1	0.1			
	<i>Veronica albicans</i>	Snow Hebe	PB3		30%	619	@0.75m Ctrs	1	0.5			
	<i>Muehlenbeckia axillaris</i>	Creeping Pōhuehue	PB3		15%	309	@0.75m Ctrs	1	0.2			
						100%	6394					
G2 Neighbourhood Streets - Lower Terrace Mix												
	<i>Veronica diosmifolia</i>	Smooth-leaved Hebe	PB3	1186	40%	548	@1m Ctrs	1.5	1			
	<i>Goodenia radicans</i>	Remuremu	PB3		15%	91	@1.5m Ctrs	2	0.2			
	<i>Libertia grandiflora</i>	Mikoikoi / New Zealand Iris	PB5		30%	1644	@ 0.5m Ctrs	0.75	0.6			
	<i>Coprosma acerosa</i>	Sand Coprosma	PB5		15%	365	@0.75m Ctrs	1	1			
						100%	2648					
G3 Neighbourhood Streets - Upper Terrace Mix												
	<i>Astelia fragrans</i>	Kakaha / Bush flax	PB5	1841	40%	1512	@0.75m Ctrs	1	1			
	<i>Acaena inermis purpurea</i>	Purple Bidibid	PB3		15%	567	@0.75m Ctrs	1	0.1			
	<i>Hebe Wiri Mist</i>	Wiri Mist Hebe	PB3		30%	1134	@0.75m Ctrs	1	1			
	<i>Coprosma acerosa</i>	Sand Coprosma	PB3		15%	567	@0.75m Ctrs	1	1			
						100%	3780					
G4 Neighbourhood Streets - Lucas Block Mix												
	<i>Poa cita</i>	Silver Tussock	PB3	227	40%	1166	@ 0.3m Ctrs	0.5	0.6			
	<i>Libertia ixioides</i>	Yellow New Zealand Iris	PB5		15%	70	@0.75m Ctrs	1	1			
	<i>Leptinella dioica</i>	Button Cotula	PB3		30%	140	@0.75m Ctrs	1	0.1			
	<i>Scleranthus biflorus</i>	Canberra grass / Cushion Plant	PB3		15%	984	@0.2m Ctrs	0.3	0.05			
						100%	2359					
G5 Neighbourhood Centre Mix												
	<i>Fuchsia procumbens</i>	Tōtara / Creeping Fuchsia	PB3	398	10%	82	@0.75m Ctrs	1	0.05			
	<i>Phormium 'Emerald Gem'</i>	Emerald Gem Phormium	PB5		15%	276	@ 0.5m Ctrs	0.7	0.6			
	<i>Hebe 'First Light'</i>	Nana' Hebe	PB3		5%	41	@0.75m Ctrs	0.9	0.3			
	<i>Libertia grandiflora</i>	Mikoikoi / New Zealand Iris	PB5		5%	41	@0.75m Ctrs	0.9	0.6			
	<i>Astelia fragrans</i>	Kakaha / Bush flax	PB5		5%	41	@0.75m Ctrs	1	1			
	<i>Veronica speciosa</i>	Purple Hebe	PB5		10%	82	@0.75m Ctrs	1	1			
	<i>Leptinella dioica</i>	Button Cotula	PB3		10%	82	@0.75m Ctrs	1	0.1			
	<i>Carex virgata</i>	Pukio / Swamp sedge	PB3		15%	122	@0.75m Ctrs	1	1			
	<i>Muehlenbeckia axillaris</i>	Creeping Pōhuehue	PB3		10%	82	@0.75m Ctrs	1	0.2			
	<i>Dianella nigra</i>	Tūrutu	PB5		15%	765	@ 0.3m Ctrs	0.5	0.4			
						100%	1612					
G6 Parks and Reserves Mix												
	<i>Libertia ixioides</i>	Yellow New Zealand Iris	PB5	1986	10%	408	@0.75m Ctrs	1	1			
	<i>Coprosma 'Black Cloud'</i>	Coprosma, Black Cloud	PB5		10%	229	@1m Ctrs	1.5	0.7			
	<i>Lobelia angulata</i>	Pānakenake	PB3		20%	204	@1.5m Ctrs	2	0.1			
	<i>Parahebe catarractae 'Snow Cap'</i>	Snow Cap' Parahebe	PB3		10%	2548	@ 0.3m Ctrs	0.5	0.5			
	<i>Arthropodium cirratum</i>	Rengarenga Lily	PB5		15%	612	@0.75m Ctrs	1	1			
	<i>Apodasmia similis</i>	Oioi / Jointed Rush	PB3		10%	2548	@ 0.3m Ctrs	0.5	0.6			
	<i>Phormium cookianum</i>	Wharariki / Mountain Flax	PB5		10%	229	@1m Ctrs	1.5	2			
	<i>Dianella nigra</i>	Tūrutu	PB5		15%	3822	@ 0.3m Ctrs	0.5	0.4			
						100%	10599					

blac.

MT. WELCOME

LANDSCAPE + ECOLOGY PLANS

Platinum City, Porirua, Wellington.

Project No.058 2026.03



Revisions
FOR RESOURCE CONSENT

NOT FOR CONSTRUCTION

Disclaimer
This document has been prepared by Blac Limited on the following basis:
A. It is based on the specific instructions provided to Blac Limited by its client.
B. It is for Blac Limited's client's use in accordance with agreed scope of work between that client and Blac Limited.
C. Blac Limited does not accept any liability in relation to any third party's use of this document or any part of this document.
D. Where information has been supplied to Blac Limited's client or obtained from other external sources, Blac Limited has assumed that such information is accurate, without any further investigation.
E. Blac Limited does not accept any liability or responsibility for any errors or omissions that relate to or arise from inaccurate information provided by their clients or any external source.
F. All contractors other than Blac Limited are:
L. responsible for verifying all dimensions on site and confirming the location of all underground services on site prior to commencing any work.
Not to rely on any dimensions set out by Blac Limited in this document.
True North

Scale
PLANTING
SCHEDULE 01_

L5.0

NOTE: ALL QUANTITIES ARE UNDER REVIEW.

Sheet No. © 2026

SPECIMEN TREE PALETTE



HOHERIA POPULNEA
HOHERE / LACEBARK



PITTOSPORUM EUGENIODES
TARATA / LEMONWOOD



ALECTRYON EXCELSUS
TITOKI



SOPHORA TETRAPTERA
LARGE LEAVED KŌWHAI



PSEUDOPANAX ARBOREUS
WHAUWHAUPAKU / FIVE-FINGER



PLAGIANTHUS REGIUS
MĀNATU / RIBBONWOOD



KUNZEA ERICOIDES
KĀNUKA



PSEUDOPANAX CRASSIFOLIUS
HOROEKA / LANCEWOOD



PODOCARPUS TOTARA
TOTARA



DYSOXYLUM SPECTABILE
KOHEKOHE



CORDYLINA AUSTRALIS
TĪ KŌUKA / CABBAGE TREE

G1_ COLLECTOR STREETS_ ACROSS DEVELOPMENT



POA CITA
SILVER TUSSOCK



VERONICA ALBICANS
SNOW HEBE



VERONICA DIOSMIFOLIA
SMOOTH-LEAVED HEBE



LIBERTIA GRANDIFLORA
MIKOIKOI / NEW ZEALAND IRIS



ASTELIA FRAGRANS
KAKAHA / BUSH FLAX



HEBE WIRI MIST
WIRI MIST HEBE



POA CITA
SILVER TUSSOCK



LEPTINELLA DIOICA
BUTTON COTULA



LEPTINELLA DIOICA
BUTTON COTULA



MUEHLENBECKIA AXILLARIS
CREEPING PŌHUEHUE



GOODENIA RADICANS
REMUREMU



COPROSMA ACEROSA
SAND COPROSMA



ACAENA INERMIS PURPUREA
PURPLE BIDIBID



COPROSMA BRUNNEA
RED SAND COPROSMA



LIBERTIA IXIODES
YELLOW NEW ZEALAND IRIS



SCLERANTHUS BIFLORUS
CUSHION PLANT

G5_ NEIGHBOURHOOD CENTRE



FUCHSIA PROCUMBENS
TOTARA / CREEPING FUCHSIA



HEBE 'FIRST LIGHT'
NANA' HEBE



ASTELIA FRAGRANS
KAKAHA / BUSH FLAX



LEPTINELLA DIOICA
BUTTON COTULA



MUEHLENBECKIA AXILLARIS
CREEPING PŌHUEHUE

G6_ PARKS AND RESERVES



LIBERTIA IXIODES
YELLOW NEW ZEALAND IRIS



LOBELIA ANGULATA
PANAKENAKE



ARTHROPODIUM CIRRRATUM
RENGARENGA LILY



PHORMIUM COOKIANUM
WHARARIKI / MOUNTAIN FLAX



PHORMIUM 'EMERALD GEM'
EMERALD GEM PHORMIUM



LIBERTIA GRANDIFLORA
MIKOIKOI / NEW ZEALAND IRIS



VERONICA SPECIOSA
PURPLE HEBE



CAREX VIRGATA
PUKIO / SWAMP SEDGE



DIANELLA NIGRA
TŪRUTU



COPROSMA 'BLACK CLOUD'
COPROSMA



PARAHEBE CATARRACTAE 'SNOW CAP'
SNOW CAP' PARAHEBE



APODASIA SIMILIS
OIOI / JOINTED RUSH



DIANELLA NIGRA
TŪRUTU



MT. WELCOME
LANDSCAPE + ECOLOGY PLANS

Photograph by Porima, Wellington.

Project No.058 2026.03



Revisions
FOR RESOURCE CONSENT

NOT FOR CONSTRUCTION

Disclaimer

This document has been prepared by Blac Limited on the following basis:
A. It is based on the specific instructions provided to Blac Limited by its Client.
B. It is for Blac Limited's client's use in accordance with agreed scope of work between that client and Blac Limited.
C. Blac Limited does not accept any liability in relation to any third party's use of this document or any part of this document.
D. Where information has been supplied to Blac Limited's client prior to this document, Blac Limited has assumed that such information is accurate, without any further investigation.
E. Blac Limited does not accept any liability or responsibility for any errors or omissions that relate to or arise from inaccurate information provided by their client or any external source.
F. All contractors other than Blac Limited are:
1. responsible for verifying all dimensions on site and confirming the location of all underground services on site prior to commencing any work.
2. not to rely on any dimensions set out by Blac Limited in this document.
True North

Scale
PLANTING PALETTE 01_

L5.01

Sheet No. © 2026

Code	Botanical Name	Common/ Maori Name	Min Grade	Area (m ²)	Percentage Mix	Quantity	Spacing guide	Spread at maturity (m)	Height at maturity (m)	Remarks	Price	Source
H1	Raingarden Mix											
	<i>Carex geminata</i>	Rautahi / Cutty grass	PB5	6104	15%	1880	@0.75m Ctrs	1	1.2			
	<i>Carex testacea</i>	Orange New Zealand Sedge	PB5		15%	4229	@0.5m Ctrs	0.6	0.45			
	<i>Carex secta</i>	Pūrei / New Zealand Sedge	PB5		15%	1057	@1m Ctrs	1.5	1.5			
	<i>Carex virgata</i>	Pukio / Swamp Sedge	PB5		15%	1880	@0.75m Ctrs	1	1			
	<i>Cyperus ustulatus</i>	Coastal Cutty Grass	PB5		20%	1410	@1m Ctrs	1.5	2			
	<i>Carex lessoniana</i>	Rautahi	PB5		20%	1410	@1m Ctrs	1.5	1.5			
					100%	11865						
H2A	Retention Wetlands + Margins - Upper Bank Mix											
	<i>Leptospermum scoparium</i>	Mānuka	1L	12261	25%	885	@2m Ctrs	3	5			
	<i>Coprosma propinqua</i>	Mingimingi	1L		15%	531	@2m Ctrs	3	3			
	<i>Aristolelia serrata</i>	makomako	1L		10%	157	@ 3m Ctrs	5	10			
	<i>Carpodetus serratus</i>	Putaputawētā	1L		10%	157	@ 3m Ctrs	5	10			
	<i>Phormium tenax</i>	Harakeke / New Zealand Flax	1L		25%	885	@2m Ctrs	3	3			
	<i>Cordylina australis</i>	TI kōuka / Cabbage Tree	1L		15%	531	@2m Ctrs	3	8			
					100%	3147						
H2B	Retention Wetlands + Margins - Lower Bank / Aquatic Mix											
	<i>Machaerina rubiginosa</i>	Baumea	1L	5099	20%	1178	@1m Ctrs	1.5	1.2			
	<i>Machaerina articulata</i>	Jointed baumea	1L		10%	262	@1.5m Ctrs	2	2			
	<i>Eleocharis acuta</i>	Spike sedge	1L		5%	1178	@0.5m Ctrs	0.6	0.9			
	<i>Eleocharis sphacelata</i>	Kutakuta	1L		5%	294	@1m Ctrs	1.5	2			
	<i>Potamogeton cheesemani</i>	Red pondweed	1L		5%	131	@1.5m Ctrs	2	2			
	<i>Myriophyllum robustum</i>	Stout water milfoil	1L		5%	294	@1m Ctrs	1.5	1.5			
	<i>Carex secta</i>	Pūrei / New Zealand Sedge	1L		20%	1178	@1m Ctrs	1.5	1.5			
	<i>Astelia grandis</i>	Swamp astelia	1L		5%	131	@1.5m Ctrs	2	2			
	<i>Schoenoplectus tabernaemontani</i>	Kāpūngāwhā	1L		5%	131	@1.5m Ctrs	2	2.5			
	<i>Typha orientalis</i>	Raupō	1L		20%	1178	@1m Ctrs	1.5	3			
					100%	5954						
H3	Stormwater Reserve Arboretum Mix											
	<i>Griselinia littoralis</i>	New Zealand Broadleaf	PB5	10502	12%	364	@ 2m Ctrs	2.5	4			
	<i>Pittosporum tenuifolium</i>	Kōhūhū / Black Matipo	PB5		12%	233	@ 2.5m Ctrs	3	10			
	<i>Phormium tenax</i>	Harakeke / New Zealand Flax	PB5		12%	364	@ 2m Ctrs	3	3			
	<i>Phormium cookianum</i>	Wharariki / Mountain Flax	PB5		12%	1455	@1m Ctrs	1.5	2			
	<i>Coprosma robusta</i>	Karamū	PB5		8%	243	@ 2m Ctrs	3	6			
	<i>Myrsine australis</i>	Red Matipo / Māpou	PB5		7%	212	@ 2m Ctrs	3	6			
	<i>Leptospermum scoparium</i>	Mānuka	PB5		7%	212	@ 2m Ctrs	3	5			
	<i>Melicytus ramiflorus</i>	Māhoe	PB5		10%	135	@ 3m Ctrs	4	8			
	<i>Muehlenbeckia astonii</i>	Shrubby Tororaro	PB5		10%	1213	@ 1m Ctrs	1.5	2			
	<i>Pittosporum eugenioides</i>	Tarata / Lemonwood	PB5		10%	135	@ 3m Ctrs	4	6			
					100%	4565						
H4	Entrance Mix											
	<i>Pseudopanax crassifolius</i>	Horoeke / Lancewood	PB8	5201	8%	120	@ 2m Ctrs	3	5			
	<i>Muehlenbeckia astonii</i>	Shrubby Tororaro	PB5		8%	480	@ 1m Ctrs	1.5	2			
	<i>Rhopalostylis sapida</i>	Nīkau Palm	PB10		7%	47	@ 3m Ctrs	6	10			
	<i>Carex testacea</i>	Orange New Zealand Sedge	PB5		8%	1922	@ 0.5m Ctrs	0.6	0.45			
	<i>Coprosma propinqua</i>	Mingimingi	PB5		8%	120	@ 2m Ctrs	3	3			
	<i>Meryta sinclairii</i>	Puka / Pukanui	PB8		7%	47	@ 3m Ctrs	4	5			
	<i>Libertia grandiflora</i>	Mikoiko / New Zealand Iris	PB5		8%	1922	@ 0.5m Ctrs	0.75	0.6			
	<i>Astelia fragrans</i>	Kakaha / Bush flax	PB5		8%	854	@0.75m Ctrs	1	1			
	<i>Kunzea ericoides</i>	Kānuka	PB8		7%	47	@ 3m Ctrs	4	8			
	<i>Muehlenbeckia axillaris</i>	Creeping Pōhuehue	PB5		8%	854	@0.75m Ctrs	1	0.2			
	<i>Coprosma rhamnoides</i>	Twiggy Coprosma	PB5		8%	480	@1m Ctrs	2	3			
	<i>Ficinia nodosa</i>	Wīwī	PB5		8%	854	@0.75m Ctrs	1	0.7			
<i>Pittosporum tenuifolium</i>	Kōhūhū / Black Matipo	PB5	7%		105	@ 2m Ctrs	3	10				
				100%	7853							
H5	Access Lane + JOAL Mix											
	<i>Pseudopanax crassifolius</i>	Horoeke / Lancewood	PB5	1195	20%	69	@ 2m Ctrs	3	5			
	<i>Libertia grandiflora</i>	Mikoiko / New Zealand Iris	PB5		20%	1104	@ 0.5m Ctrs	0.75	0.6			
	<i>Lobelia angulata</i>	Pānakenake	PB3		60%	368	@1.5m Ctrs	2	0.1			
					100%	1541						
H6	Fill Slopes + Residual Land Mix											
	<i>Kunzea ericoides</i>	Kānuka	PB5	100136	40%	5139	@ 3m Ctrs	4	8			
	<i>Phormium Tenax</i>	Harakeke / New Zealand Flax	PB5		60%	11100	@ 2.5m Ctrs	3	3			
					100%	16239						
Stage 2 - Enrichment Mix	Stage 2 - Enrichment Mix											
	<i>Melicytus ramiflorus</i>	Māhoe	PB5	100136	8%	1028	@ 3m Ctrs	4	8			
	<i>Elaeocarpus dentatus</i>	Hīnau	PB5		8%	1028	@ 3m Ctrs	6	20			
	<i>Beilschmiedia tawa</i>	Tawa	PB5		8%	1028	@ 3m Ctrs	15	30			
	<i>Cordylina australis</i>	TI kōuka / Cabbage Tree	PB5		8%	2313	@ 2m Ctrs	3	8			
	<i>Aristolelia serrata</i>	Makomako / Wineberry	PB5		8%	1028	@ 3m Ctrs	4	10			
	<i>Pterophylla racemosa</i>	Kāmahi	PB5		8%	1028	@ 3m Ctrs	10	25			
	<i>Myrsine australis</i>	Māpou / Red Matipo	PB5		8%	1480	@ 2.5m Ctrs	3	5			
	<i>Pittosporum tenuifolium</i>	Kōhūhū / Black Matipo	PB5		8%	1480	@ 2.5m Ctrs	3	10			
	<i>Metrosideros robusta</i>	Northern Rātā	PB5		7%	899	@ 3m Ctrs	6	20			
	<i>Leptospermum scoparium</i>	Mānuka	PB5		6%	1110	@ 2.5m Ctrs	3	5			
	<i>Coprosma robusta</i>	Karamū	PB5		6%	1110	@ 2.5m Ctrs	3	6			
	<i>Dacrydium cupressinum</i>	Rimu	PB5		10%	1285	@ 3m Ctrs	10	25			
<i>Pittosporum eugenioides</i>	Tarata / Lemonwood	PB5	7%		899	@ 3m Ctrs	4	6				
				100%	15715							

blac.

MT. WELCOME
LANDSCAPE + ECOLOGY PLANS

Project No.058 2026.03



Revisions
 FOR RESOURCE CONSENT

NOT FOR CONSTRUCTION

Disclaimer
 This document has been prepared by Blac Limited on the following basis:
 A. It is based on the specific instructions provided to Blac Limited by its client.
 B. It is for Blac Limited's client's use in accordance with agreed scope of work between that client and Blac Limited.
 C. Blac Limited does not accept any liability in relation to any third party's use of this document or any part of this document.
 D. Where information has been supplied to Blac Limited's client or obtained from other external sources, Blac Limited has assumed that such information is accurate, without any further investigation.
 E. Blac Limited does not accept any liability or responsibility for any errors or omissions that relate to or arise from inaccurate information provided by their client or any external source.
 F. All contractors other than Blac Limited are:
 L responsible for verifying all dimensions on site and confirming the location of all underground services on site prior to commencing any work.
 K not to rely on any dimensions set out by Blac Limited in this document.
 True North

Scale
PLANTING
SCHEDULE 02_
SHEET 1

L5.02

NOTE: ALL QUANTITIES ARE UNDER REVIEW.

Sheet No. ©2026

Plant Schedule: Mt Welcome - General Planting													
Code	Botanical Name	Common/ Maori Name	Min Grade	Area (m ²)	Percentage Mix	Quantity	Spacing guide	Spread at maturity (m)	Height at maturity (m)	Remarks	Price	Source	
H8	SNA Fill Mix												
	<i>Coprosma lucida</i>	Karamū / Shining karamū	PB5	5129	10%	592	@1m Ctrs	2.5	6				
	<i>Coprosma rhamnoides</i>	Twiggy Coprosma	PB5		10%	592	@1m Ctrs	2	3				
	<i>Gnseolina lucida</i>	Akapuka / Shining broadleaf	PB5		5%	296	@1m Ctrs	2	5				
	<i>Melicope ternata</i>	Wharangi	PB8		10%	148	@2m Ctrs	3	5				
	<i>Myrsine australis</i>	Red Matipo / Māpou	PB5		5%	296	@1m Ctrs	3	6				
	<i>Shawia paniculata</i>	Akiraho	PB8		10%	148	@2m Ctrs	3	5				
	<i>Pseudopanax arboreus</i>	Whauwhaupaku / Five-finger	25L		10%	592	@1m Ctrs	3	5				
	<i>Melicytus ramiflorus</i>	Māhoe	PB5		5%	33	@ 3m Ctrs	4	8				
	<i>Myoporum laetum</i>	Ngaio	PB8		5%	74	@2m Ctrs	3.5	6				
	<i>Plagianthus regius</i>	Mānatu / Ribbonwood	25L		10%	66	@3m Ctrs	4	10				
	<i>Hoheria populnea</i>	Houhere / Lacebark	25L		10%	148	@ 2m Ctrs	3	8				
	<i>Phormium tenax</i>	Harakeke / New Zealand Flax	PB5		10%	148	@ 2m Ctrs	3	3				
						100%	3134						
H9	Lizard Relocation Offset Areas Mix (Based off 20% of Total Area)												
	<i>Ozothamnus leptophyllus</i>	Tauhinu	PB5	6717	25%	172	@1.5m Ctrs	2	2	Scattered in clusters of 3			
	<i>Coprosma propinqua</i>	Mingimingi	PB5		25%	172	@1.5m Ctrs	1.5	3	Scattered in clusters of 3			
	<i>Muehlenbeckia complexa</i>	Pōhuehue	PB5		50%	345	@1.5m Ctrs	2	2	Scattered in clusters of 10			
			100%		689								
H10	Western Kakaho Revegetation Mix												
	<i>Phormium tenax</i>	Harakeke / New Zealand Flax	1L	5492	10%	159	@2m Ctrs	3	3				
	<i>Coprosma lucida</i>	Karamū / Shining karamū	1L		15%	951	@1m Ctrs	2.5	6				
	<i>Leptospermum scoparium</i>	Mānuka	1L		10%	634	@1m Ctrs	3	5				
	<i>Hoheria populnea</i>	Houhere / Lacebark	1L		10%	70	@3m Ctrs	3	8				
	<i>Carpodetus serratus</i>	Putaputawētā	PB3		10%	634	@1m Ctrs	5	10				
	<i>Cordylina australis</i>	Ti kōuka / Cabbage Tree	1L		5%	317	@1m Ctrs	3	8				
	<i>Sophora microphylla</i>	Kōwhai	PB3		10%	70	@3m Ctrs	6	8				
	<i>Plagianthus regius</i>	Mānatu / Ribbonwood	PB3		15%	106	@3m Ctrs	4	10				
	<i>Pseudopanax arboreus</i>	Whauwhaupaku / Five-finger	1L		10%	634	@1m Ctrs	3	5				
	<i>Dacrycarpus dacrydioides</i>	Kahikatea	PB3		5%	35	@3m Ctrs	15	25+				
					100%	3611							
	H11	Wetland Gully Mix											
<i>Carex secta</i>		Pūrei / New Zealand Sedge	1L		10281	10%	1187	@1m Ctrs	1.5	1.5			
<i>Carex virgata</i>		Pukio / Swamp Sedge	1L	15%		3166	@0.75m Ctrs	1	1				
<i>Carex geminata</i>		Rautahi / Cutty grass	1L	8%		1689	@0.75m Ctrs	1	1.2				
<i>Carex lessoniana</i>		Rautahi	1L	10%		1187	@1m Ctrs	1.5	1.5				
<i>Cyperus ustulatus</i>		Coastal Cutty Grass	1L	7%		831	@1m Ctrs	1.5	1.2				
<i>Juncus edgariae</i>		Wiwi	1L	15%		3166	@0.75m Ctrs	1	1				
<i>Juncus sarcophagus</i>		Broom rush	1L	5%		1055	@0.75m Ctrs	0.9	1.2				
<i>Isolepis prolifera</i>		Budding club-rush	1L	15%		7123	@0.5m Ctrs	0.6	0.6				
<i>Eleocharis acuta</i>		Spike sedge	1L	5%		148	@2m Ctrs	3	5				
<i>Coprosma tenuicaulis</i>		Swamp coprosma	1L	5%		148	@2m Ctrs	3	4				
<i>Syzygium maire</i>		Swamp maire	1L	1%		100	@3m Ctrs	6	15				
<i>Laurelia novae-zelandiae</i>		Pukatea	1L	2%		200	@3m Ctrs	10	35				
<i>Dacrycarpus dacrydioides</i>		Kahikatea	1L	2%		200	@3m Ctrs	15	25+				
			100%	20201									
H12	Wetland Riparian Mix												
	<i>Leptospermum scoparium</i>	Mānuka	1L	12681	25%	915	@2m Ctrs	3	5				
	<i>Coprosma propinqua</i>	Mingimingi	1L		10%	366	@2m Ctrs	3	3				
	<i>Pseudopanax arboreus</i>	Whauwhaupaku / Five-finger	1L		10%	366	@2m Ctrs	3	5				
	<i>Aristotelia serrata</i>	makomako	1L		10%	163	@3m Ctrs	5	10				
	<i>Carpodetus serratus</i>	Putaputawētā	1L		10%	163	@3m Ctrs	5	10				
	<i>Phormium tenax</i>	Harakeke / New Zealand Flax	1L		10%	366	@2m Ctrs	3	3				
	<i>Pittosporum tenuifolium</i>	Kōhūhū / Black Matipo	1L		5%	183	@2m Ctrs	3	10				
	<i>Coprosma robusta</i>	Karamū	1L		15%	244	@3m Ctrs	4	6				
	<i>Olearia rani</i>	Heketara	1L		5%	81	@3m Ctrs	5	7				
					100%	2847							

blac.

MT. WELCOME
LANDSCAPE + ECOLOGY PLANS

Project No.058 2026.03



Revisions
 FOR RESOURCE CONSENT

NOT FOR CONSTRUCTION

Disclaimer
 This document has been prepared by Blac Limited on the following basis:
 A. It is based on the specific instructions provided to Blac Limited by its client.
 B. It is for Blac Limited's client's use in accordance with agreed scope of work between that client and Blac Limited.
 C. Blac Limited does not accept any liability in relation to any third party's use of this document or any part of this document.
 D. Where information has been supplied by Blac Limited's client or obtained from other external sources, Blac Limited has assumed that such information is accurate, without any further investigation.
 E. Blac Limited does not accept any liability or responsibility for any errors or omissions that relate to or arise from inaccurate information provided by their clients or any external source.
 F. All contractors other than Blac Limited are:
 L responsible for verifying all dimensions on site and confirming the location of all underground services on site prior to commencing any work.
 K not to rely on any dimensions set out by Blac Limited in this document.
 True North

Scale
PLANTING
SCHEDULE 02_
SHEET 2

L5.03



Revisions
FOR RESOURCE CONSENT

NOT FOR CONSTRUCTION

Disclaimer
This document has been prepared by Blac Limited on the following basis:
A. It is based on the specific instructions provided to Blac Limited by its client.
B. It is for Blac Limited's client's use in accordance with agreed scope of work between that client and Blac Limited.
C. Blac Limited does not accept any liability in relation to any third party's use of this document or any part of this document.
D. Where information has been supplied to Blac Limited's client or obtained from other external sources, Blac Limited has assumed that such information is accurate, without any further investigation.
E. Blac Limited does not accept any liability or responsibility for any errors or omissions that relate to or arise from inaccurate information provided by their client or any external source.
F. All contractors other than Blac Limited are:
1. responsible for verifying all dimensions on site and confirming the location of all underground services on site prior to commencing any work.
2. not to rely on any dimensions set out by Blac Limited in this document.
True North

Scale
PLANTING PALETTE
02_

L5.04

H1_ RAINGARDENS



CAREX GEMINATA
RAUTAHI / CUTTY GRASS



CAREX SECTA
PŌREI / NEW ZEALAND SEDGE



CYPERUS USTULATUS
COASTAL CUTTY GRASS



CAREX TESTACEA
ORANGE NEW ZEALAND SEDGE



CAREX VIRGATA
PUKIO / SWAMP SEDGE



CAREX LESSONIANA
RAUTAHI

H2A_ RETENTION WETLANDS + MARGINS_ UPPER BANK



CAREX LESSONIANA
RAUTAHI

H2B_ RETENTION WETLANDS + MARGINS_ LOWER BANK / AQUATIC



CAREX SECTA
PŌREI / NEW ZEALAND SEDGE



CYPERUS USTULATUS
COASTAL CUTTY GRASS



CAREX VIRGATA
PUKIO / SWAMP SEDGE

H3_ STORMWATER RESERVE ARBORETUM MIX



GRISELINIA LITTORALIS
NEW ZEALAND BROADLEAF



PHORMIUM COOKIANUM
WHARARIKI / MOUNTAIN FLAX



MYRSINE AUSTRALIS
RED MATIPO / MAPOU



MELICYTUS RAMIFLORUS
MAHOE



Pittosporum eugenioides
Tarata / Lemonwood



PITTIOSPORUM TENUIFOLIUM
KŌHŪHŪ / BLACK MATIPO



PHORMIUM TENAX
HARAKEKE / NEW ZEALAND FLAX



COPROSMA ROBUSTA
KARAMŪ



LEPTOSPERMUM SCOPARIUM
MĀNUKA



MUEHLENBECKIA ASTONII
SHRUBBY TORORARO

H4_ ENTRANCE MIX



POA CITA
SILVER TUSSOCK



RHOPALOSTYLIS SAPIDA
NIKAU PALM



COPROSMA PROPINQUA
MINGIMINGI



LIBERTIA GRANDIFLORA
MIKOIKOI / NEW ZEALAND IRIS



KUNZEA ERICOIDES
KĀNUKA



COPROSMA RHAMNOIDES
TWIGGY COPROSMA



PITTIOSPORUM TENUIFOLIUM
KŌHŪHŪ / BLACK MATIPO

H5_ ACCESS LANE + JOAL MIX



PSEUDOPANAX CRASSIFOLIUS
HOROEKA / LANCEWOOD



LIBERTIA GRANDIFLORA
MIKOIKOI / NEW ZEALAND IRIS



MUEHLENBECKIA ASTONII
SHRUBBY TORORARO



CAREX TESTACEA
ORANGE NEW ZEALAND SEDGE



MERYTA SINCLAIRII
PUKA / PUKANUI



ASTELIA FRAGRANS
KAKAHA / BUSH FLAX



MUEHLENBECKIA AXILLARIS
CREEPING PŌHUEHUE



FICINIA NODOSA
WĪWĪ



LOBELIA ANGULATA
PĀNAKENAKE



Revisions
FOR RESOURCE CONSENT

NOT FOR CONSTRUCTION

Disclaimer
This document has been prepared by Blac Limited on the following basis:
A. It is based on the specific instructions provided to Blac Limited by its client.
B. It is for Blac Limited's client's use in accordance with agreed scope of work between that client and Blac Limited.
C. Blac Limited does not accept any liability in relation to any third party's use of this document or any part of this document.
D. Where information has been supplied by Blac Limited's client or obtained from other external sources, Blac Limited has assumed that such information is accurate, without any further investigation.
E. Blac Limited does not accept any liability or responsibility for any errors or omissions that relate to or arise from inaccurate information provided by their clients or any external source.
F. All contractors other than Blac Limited are:
1. responsible for verifying all dimensions on site and confirming the location of all underground services on site prior to commencing any work.
2. not to rely on any dimensions set out by Blac Limited in this document.
True North

Scale
PLANTING PALETTE
03_

L5.05

H6
FILL SLOPES + RESIDUAL LAND

STAGE 2 - ERICHMENT



KUNZEA ERICOIDES
KĀNUKA



MELICYTUS RAMIFLORUS
MĀHOE



BEILSCHMIEDIA TAWA
TAWA



ARISTOTELIA SERRATA
MAKOMAKO / WINEBERRY



MYRSINE AUSTRALIS
MĀPOU / RED MATIPO



LEPTOSPERMUM SCOPARIUM
MĀNUKA



DACRYDIUM CUPRESSINUM
RIMU



PITTOSPORUM EUGENOIDES
TARATA / LEMONWOOD



PHORMIUM TENAX
HARAKEKE / NEW ZEALAND FLAX



ELAEOCARPUS DENTATUS
HINAU



CORDYLINAE AUSTRALIS
TĪ KŌUKA / CABBAGE TREE



PTEROPHYLLA RACEMOSA
KĀMAHI



PITTOSPORUM TENUIFOLIUM
KŌHŪHŪ / BLACK MATIPO



METROSIDEROS ROBUSTA
NORTHERN RĀTĀ



COPROSMA ROBUSTA
KARAMŪ

H7
SNA 5m BUFFER MIX



COPROSMA LUCIDA
KARAMŪ / SHINING KARAMŪ



GRISELINIA LUCIDA
AKAPUKA / SHINING BROADLEAF



MYRSINE AUSTRALIS
RED MATIPO / MĀPOU



PSEUDOPANAX ARBOREUS
WHĀUWHĀUPAKU / FIVE-FINGER



MYOPORUM LAETUM
NGAIO



HOHERIA POPULNEA
HOHERE / LACEBARK



COPROSMA RHAMNOIDES
TWIGGY COPROSMA



MELICOPE TERNATA
WHARANGĪ



SHAWIA PANICULATA
AKIRAHO



MELICYTUS RAMIFLORUS
MĀHOE



PLAGIANTHUS REGIUS
MĀNĀTU / RIBBONWOOD



PHORMIUM TENAX
HARAKEKE / NEW ZEALAND FLAX

H8_ SNA FILL MIX



ALECTRYON EXCELSUS
TITOKI



COPROSMA AREOLATA
THIN-LEAVED COPROSMA



COPROSMA RHAMNOIDES
TWIGGY COPROSMA



DYSOXYLUM SPECTABILE
KOHEKOHE



KNIGHTIA EXCELSA
REWAREWA / NZ HONEYSUCKLE



MELICOPE TERNATA
WHARANGI



MYRSINE AUSTRALIS
RED MATIPO / MĀPOU



PENNANTIA CORYMBOSA
KAIKŌMAKO



PSEUDOPANAX ARBOREUS
WHALUHAUPAKU / FIVE-FINGER



BEILSCHMIEDIA TAWA
TAWA



COPROSMA GRANDIFOLIA
KĀNŌNO



COPROSMA ROBUSTA
KĀRAMŪ



ELAEOCARPUS DENTATUS
HĪNAU



KUNZEA ERICOIDES
KĀNUKA



MYOPORUM LAETUM
NGAIO



SHAWIA PANICULATA
AKIRAHŌ



PITTOSPORUM TENUIFOLIUM
KŌHŪHŪ / BLACK MATIPO



SOPHORA MICROPHYLLA
KŌWHAI / SMALL LEAVED KŌWHAI



BRACHYGLOTTIS REPANDA
RANGIORA



COPROSMA LUCIDA
KĀRAMŪ / SHINING KĀRAMŪ



CORDYLINE AUSTRALIS
TĪ KŌUKA / CABBAGE TREE



GRISELINIA LUCIDA
AKAPUKA / SHINING BROADLEAF

H9_ LIZARD RELOCATION OFFSET AREAS MIX



OZOTHAMNUS LEPTOPHYLLUS
TAUHINU



COPROSMA PROPINQUA
MINGIMINGI



MUEHLENBECKIA COMPLEXA
POHUEHUE

MT. WELCOME

LANDSCAPE + ECOLOGY PLANS

Photograph by Porima, Wellington.

Project No.058

2026.03



Revisions

FOR RESOURCE CONSENT

NOT FOR CONSTRUCTION

Disclaimer

This document has been prepared by Blac Limited on the following basis:
A. It is based on the specific instructions provided to Blac Limited by its client.
B. It is for Blac Limited's client's use in accordance with agreed scope of work between that client and Blac Limited.
C. Blac Limited does not accept any liability in relation to any third party's use of this document or any part of this document.
D. Where information has been supplied by Blac Limited's client or obtained from other external sources, Blac Limited has assumed that such information is accurate, without any further investigation.
E. Blac Limited does not accept any liability or responsibility for any errors or omissions that relate to or arise from inaccurate information provided by their client or any external source.
F. All contractors other than Blac Limited are responsible for verifying all dimensions on site and confirming the location of all underground services on site prior to commencing any work.
Not to rely on any dimensions set out by Blac Limited in this document.

True North

Scale

PLANTING PALETTE 04_

L5.06

Sheet No.

© 2026