

0 100 200 300 400 500 m

- Stormwater catchment boundaries (Indicative)
- Treatment area
- No Treatment, runoff infiltrated for 1% AEP events
- WQV treated, Hydraulic Neutrality Achieved by Macro Storage
- WQV treated, Not Hydraulically Neutral
- WQV treated, exceedance infiltrated up to 1% AEP

- Notes:
1. Catchment boundaries reflect proposed earthworks, verified overland flowpaths, and are used to size treatment devices and drainage networks.
  2. The primary network is designed for the 10 % AEP event, with road-based secondary flowpaths shown for the 1 % AEP event.
  3. Discharge points connect to the downstream drain and wetland system; stormwater and wetland treatment functions remain separate.
  4. Catchment mapping supports the stormwater management plan treatment-train approach and is to be carried through detailed design and future lot development.
  5. Catchments and 10 % AEP primary conveyance routes are shown indicatively per KCDC LDMR 2022 and NZS 4404; conveyance may be piped or swale-based to suit topography.
  6. Stormwater treatment devices are to be located outside the modelled 10 % AEP flood extent, subject to detailed design.

**Overall Stormwater Catchment Plan**  
Catchment Types

Waikanae North Developments Ltd

Waikanae North  
Peka Peka, Kapiti Coast

© Landlink Limited 2025



1 Ngaio Road, Waikanae 5036 + contactus@Landlink.nz

STAGE	ALL
REVISION	C
REVISION DETAILS	Issued For Consent

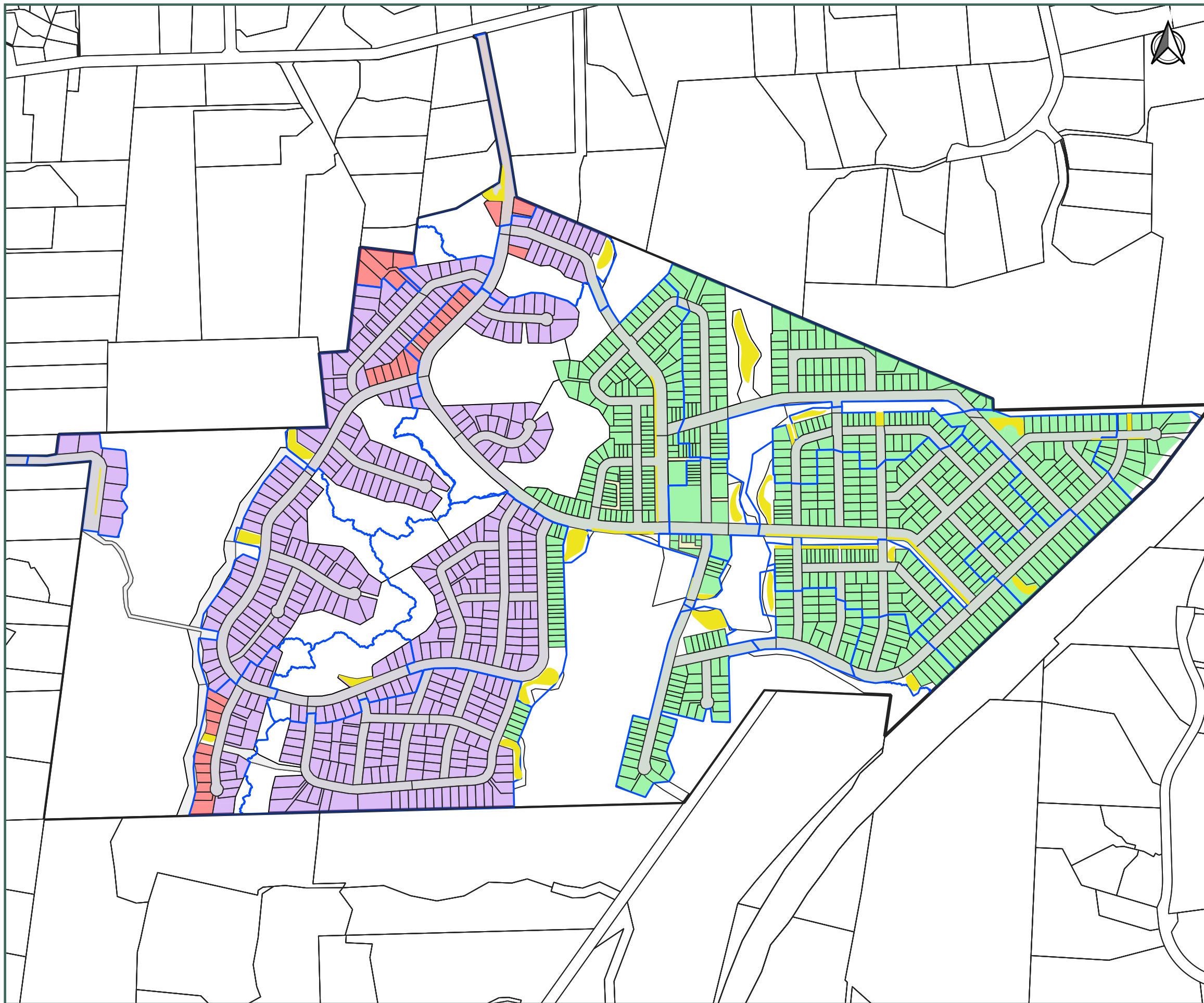
DESIGNED BY	JJH
DRAWN BY	JJH
APPROVED BY	PT

This drawing contains data from other sources and has been prepared for a specific site and event. Landlink Limited does not accept any liability for its accuracy, content or unauthorised use.

DATE 2026-03-13

SCALE Refer Scale Bar

2911-ALL-SW-400



0 100 200 300 400 500 m

Legend

- Stormwater treatment area
- Lot Discharge Category
- 1% AEP to Ground Required
- Direct discharge lots
- Attenuated/Treated discharge lots

Notes:

1. Lot controls identify areas needed to maintain drainage routes, ecological buffers, and access to the wetland and drain corridor.
2. Finished floor levels must comply with modelled 1 % AEP levels and freeboard and must keep defined flowpaths unobstructed.
3. Lots near drains and wetlands may require site-specific design at building-consent stage to maintain the drainage direction shown.
4. Catchments and 10 % AEP primary conveyance routes are shown indicatively per KCDC LDMR 2022 and NZS 4404.
5. Stormwater treatment devices are to be located outside the modelled 10 % AEP flood extent, subject to detailed design.

**Stormwater Lot Control Plan**

Waikanae North Developments Ltd

Waikanae North

Peka Peka, Kapiti Coast

© Landlink Limited 2025



1 Ngaio Road, Waikanae 5036 + contactus@Landlink.nz

This drawing contains data from other sources and has been prepared for a specific site and event. Landlink Limited does not accept any liability for its accuracy, content or unauthorised use.

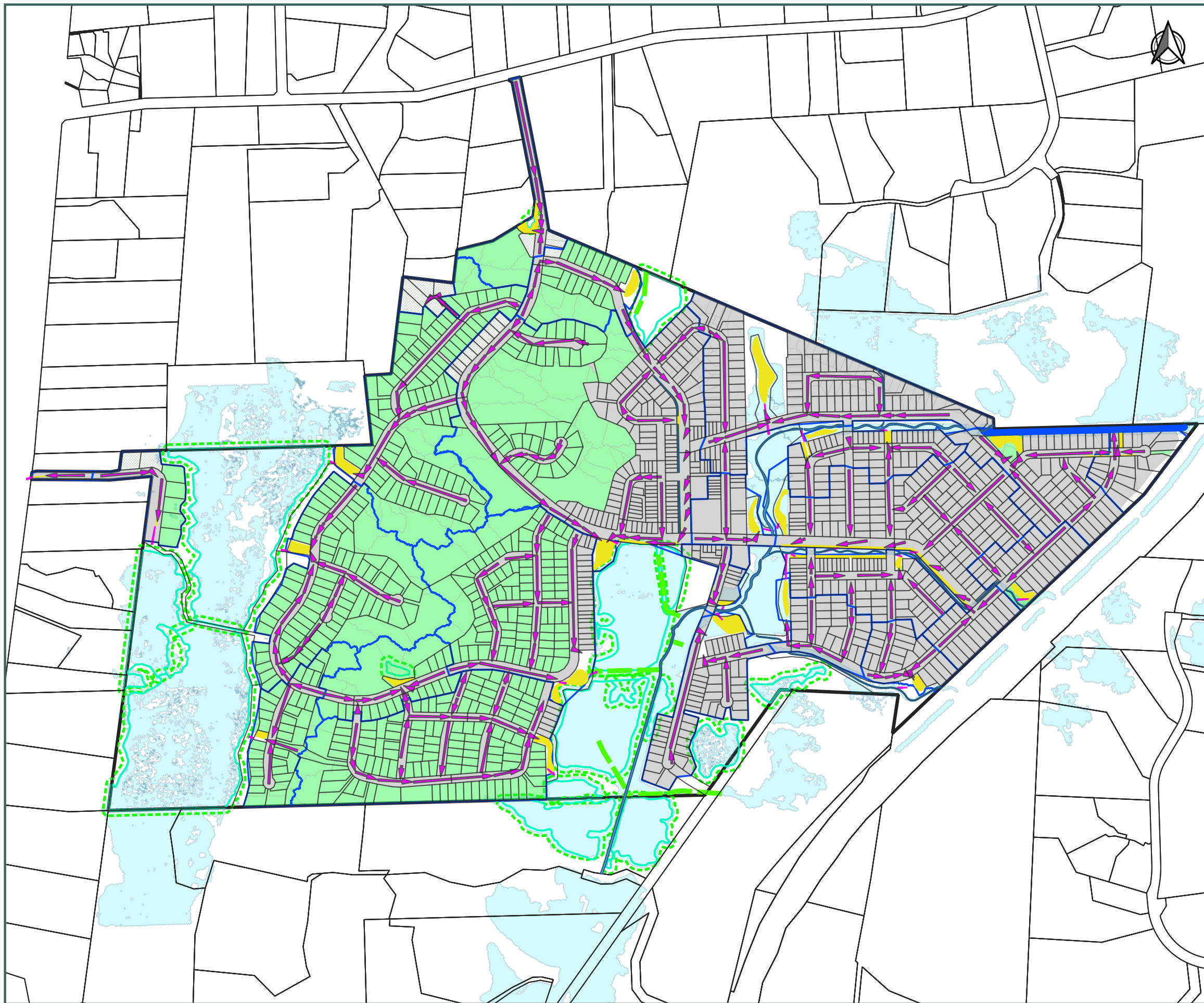
STAGE	ALL
REVISION	C
REVISION DETAILS	Issued For Consent

DESIGNED BY	JJH
DRAWN BY	JJH
APPROVED BY	PT

DATE 2026-03-13

SCALE Refer Scale Bar

**2911-ALL-SW-401**



0 100 200 300 400 500 m

Legend

- 10% AEP
  - Ex drains retained
  - Exceedence outlet and Rip Rap
  - Proposed catchment Boundaries (Indicative)
  - Stormwater conveyance
  - Wetlands buffer
  - Wetlands Retained
  - Stormwater Treatment Area
- Catchment Contribution
- 70% Imp
  - Greenfield/Treated/Attenuated
  - No Flow
  - Propsed Overflow Drain

Notes:

1. Layout and levels are based on preliminary design and are subject to refinement through detailed modelling.
2. Runoff is conveyed via the primary network for the 10 % AEP event, with exceedance routed along road corridors in the 1 % AEP event.
3. For the water-quality event, stormwater discharges to wetlands are to be diffuse, consistent with Treatment Typology Plans 480 and 481.
4. Stormwater treatment devices are to be located outside the modelled 10 % AEP flood extent, subject to detailed design.
5. Proprietary filters may be used in areas where groundwater limits use of infiltration-based devices.

Overall Stormwater Management Plan

Waikanae North Developments Ltd

Waikanae North

Peka Peka, Kapiti Coast

© Landlink Limited 2025



1 Ngaio Road, Waikanae 5036 + contactus@Landlink.nz

This drawing contains data from other sources and has been prepared for a specific site and event. Landlink Limited does not accept any liability for its accuracy, content or unauthorised use.

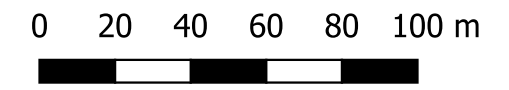
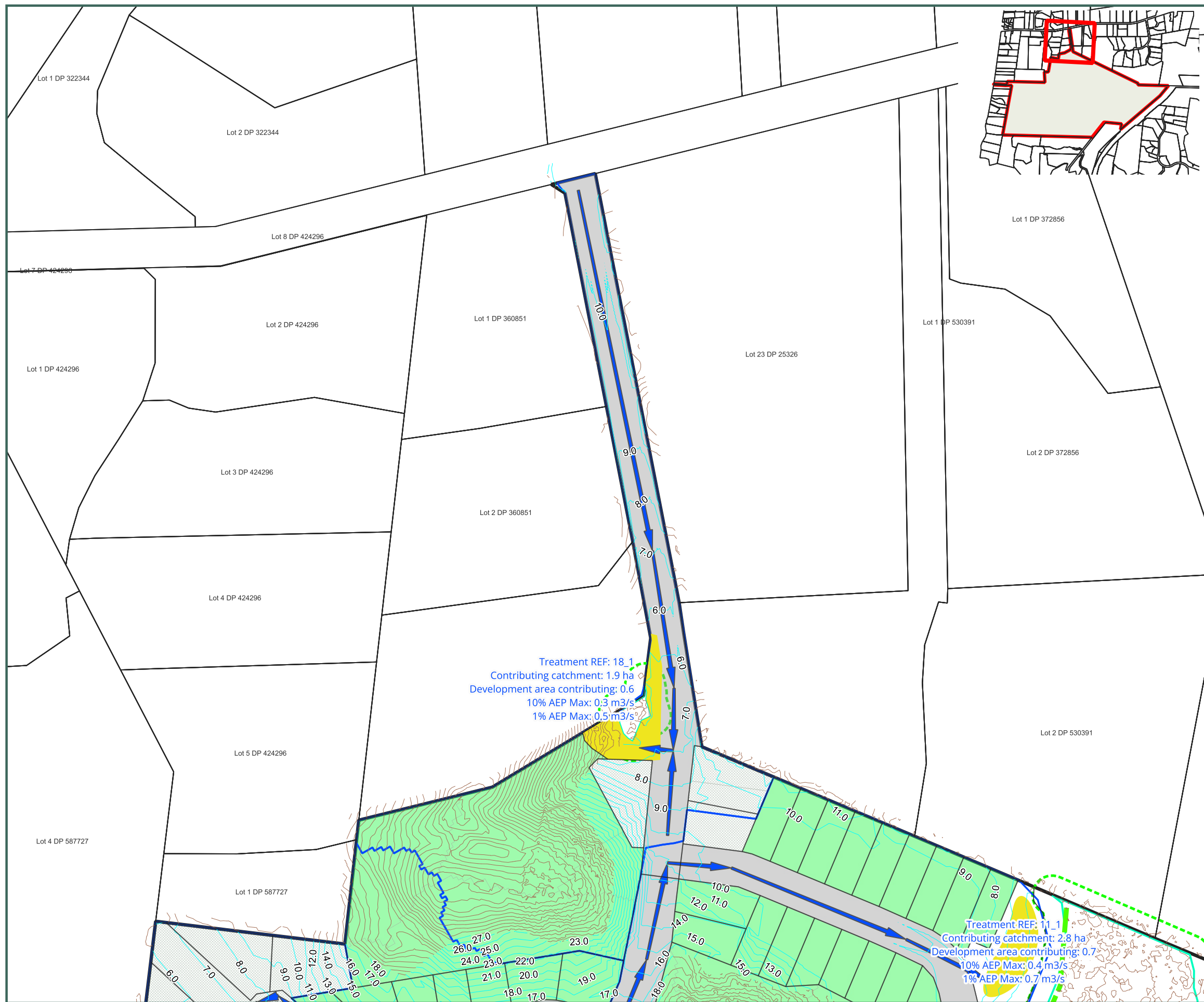
STAGE	ALL
REVISION	C
REVISION DETAILS	Issued For Consent

DESIGNED BY	JJH
DRAWN BY	JJH
APPROVED BY	PT

DATE 2026-03-13

SCALE Refer Scale Bar

2911-ALL-SW-402



Legend

- Ex drains retained
  - Stormwater Management/Treatment Area
  - Wetlands Retained
  - Wetlands buffer
  - ▶ Stormwater Conveyance
  - Proposed SW catchment boundaries (Indicative)
- Area Classification
- 70% Imp
  - Treated / Attenuated or Greenfield
  - No Flow

Notes:

1. Layout and levels are indicative and subject to refinement through detailed modelling.
2. 10% AEP conveyed via primary network; 1% AEP exceedance routed along road corridors.
3. Water-quality discharges to wetlands to be diffuse (refer Typology Plans 480 & 481).
4. Treatment devices to be located outside the modelled 10% AEP extent (subject to detailed design).
5. Proprietary devices may be used where groundwater levels constrain infiltration, consistent with the SMP.
6. Catchment-specific calculations are provided in the Landlink Stormwater Management Plan and appendices.

Stormwater Catchment and Features Plan

Sheet 1 of 14

Waikanae North Developments Ltd

Waikanae North

Peka Peka, Kapiti Coast

© Landlink Limited 2025



1 Ngaio Road, Waikanae 5036 + contactus@Landlink.nz

STAGE	ALL
REVISION	C
REVISION DETAILS	Issued For Consent

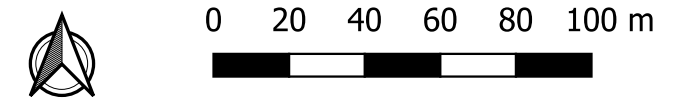
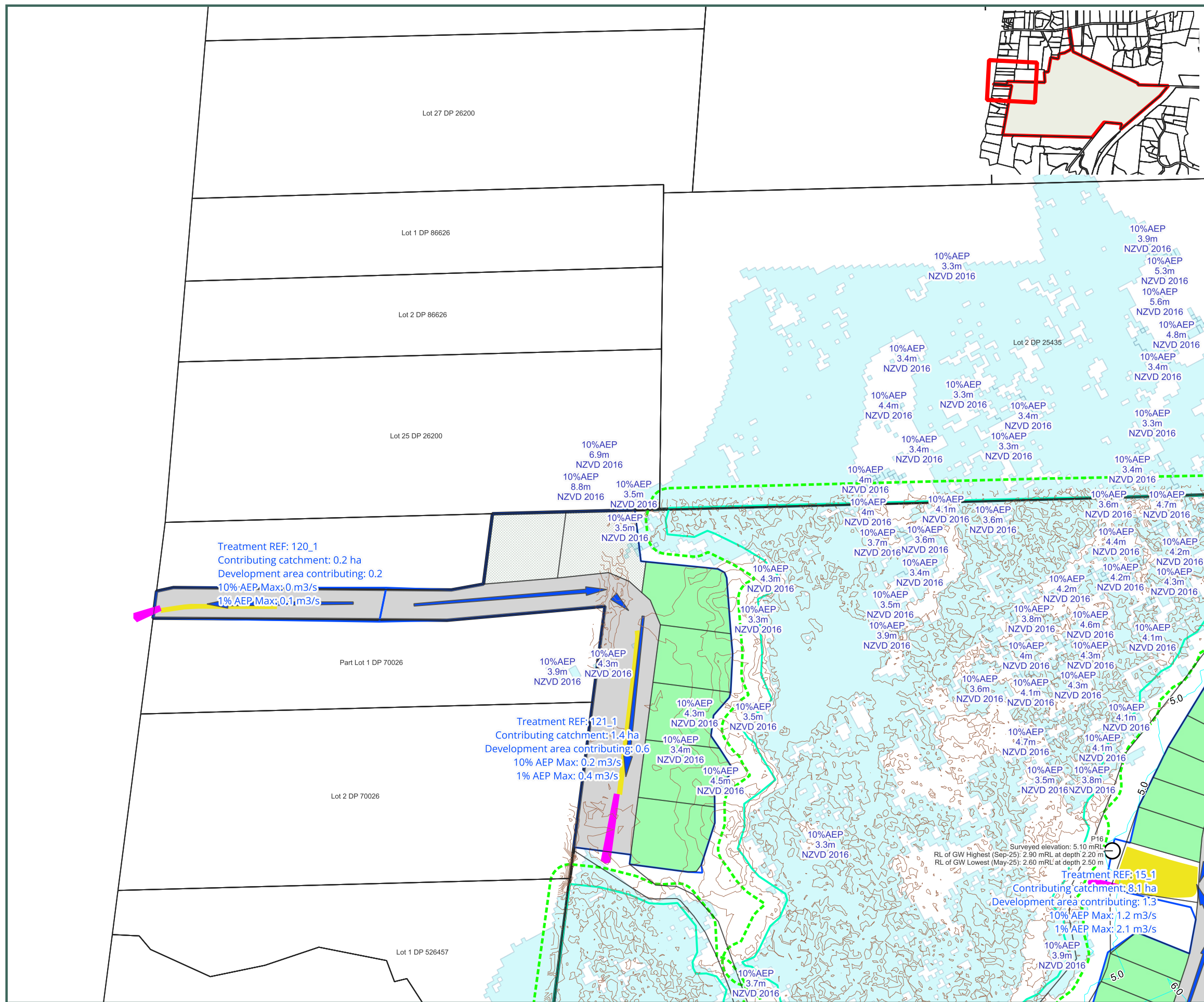
DESIGNED BY	JJH
DRAWN BY	JJH
APPROVED BY	PT

DATE 2026-03-13

SCALE Refer Scale Bar

2911-ALL-SW-410

This drawing contains data from other sources and has been prepared for a specific site and event. Landlink Limited does not accept any liability for its accuracy, content or unauthorised use.



- Legend**
- Exceedence Outlet and Rip Rap
  - Stormwater Management/Treatment Area
  - Wetlands Retained
  - Wetlands buffer
  - Stormwater Conveyance
  - Proposed SW catchment boundaries (Indicative)
- Area Classification**
- 70% Imp
  - Treated / Attenuated or Greenfield
  - No Flow

- Notes:**
1. Layout and levels are indicative and subject to refinement through detailed modelling.
  2. 10% AEP conveyed via primary network; 1% AEP exceedance routed along road corridors.
  3. Water-quality discharges to wetlands to be diffuse (refer Typology Plans 480 & 481).
  4. Treatment devices to be located outside the modelled 10% AEP extent (subject to detailed design).
  5. Proprietary devices may be used where groundwater levels constrain infiltration, consistent with the SMP.
  6. Catchment-specific calculations are provided in the Landlink Stormwater Management Plan and appendices.

**Stormwater Catchment and Features Plan**  
Sheet 2 of 14

Waikanae North Developments Ltd

Waikanae North  
Peka Peka, Kapiti Coast

© Landlink Limited 2025



1 Ngaio Road, Waikanae 5036 + contactus@Landlink.nz

STAGE	ALL
REVISION	C
REVISION DETAILS	Issued For Consent

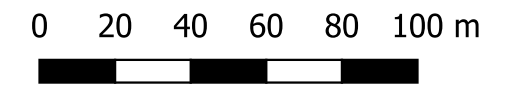
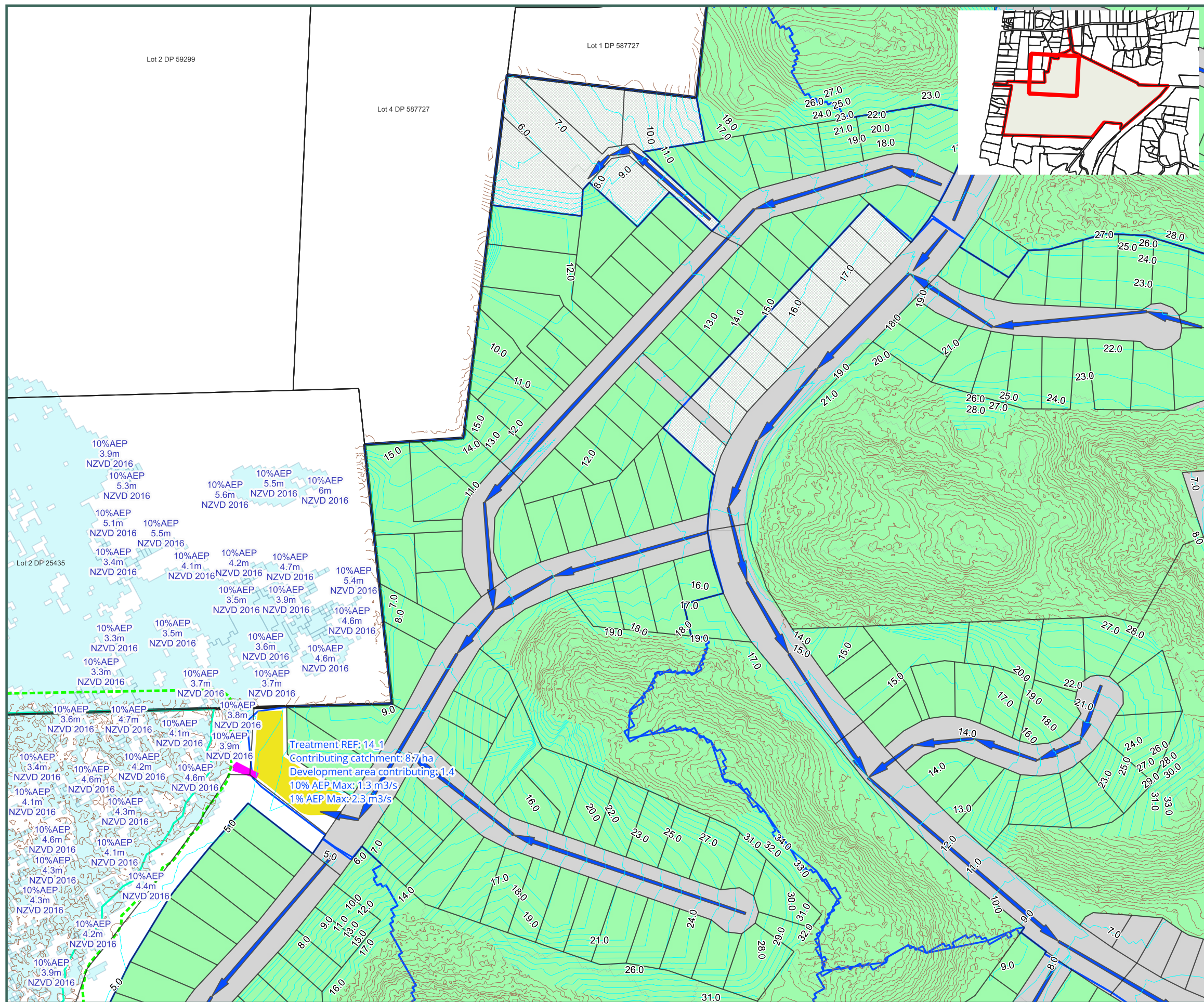
DESIGNED BY	JJH
DRAWN BY	JJH
APPROVED BY	PT

DATE 2026-03-13

SCALE Refer Scale Bar

2911-ALL-SW-411

This drawing contains data from other sources and has been prepared for a specific site and event. Landlink Limited does not accept any liability for its accuracy, content or unauthorised use.



Legend

- █ Exceedence Outlet and Rip Rap
  - Stormwater Management/Treatment Area
  - Wetlands Retained
  - Wetlands buffer
  - Stormwater Conveyance
  - Proposed SW catchment boundaries (Indicative)
- Area Classification
- 70% Imp
  - Treated / Attenuated or Greenfield
  - No Flow

Notes:

1. Layout and levels are indicative and subject to refinement through detailed modelling.
2. 10% AEP conveyed via primary network; 1% AEP exceedance routed along road corridors.
3. Water-quality discharges to wetlands to be diffuse (refer Typology Plans 480 & 481).
4. Treatment devices to be located outside the modelled 10% AEP extent (subject to detailed design).
5. Proprietary devices may be used where groundwater levels constrain infiltration, consistent with the SMP.
6. Catchment-specific calculations are provided in the Landlink Stormwater Management Plan and appendices.

**Stormwater Catchment and Features Plan**

Sheet 3 of 14

Waikanae North Developments Ltd

Waikanae North

Peka Peka, Kapiti Coast

© Landlink Limited 2025



1 Ngaio Road, Waikanae 5036 + contactus@Landlink.nz

STAGE	ALL
REVISION	C
REVISION DETAILS	Issued For Consent

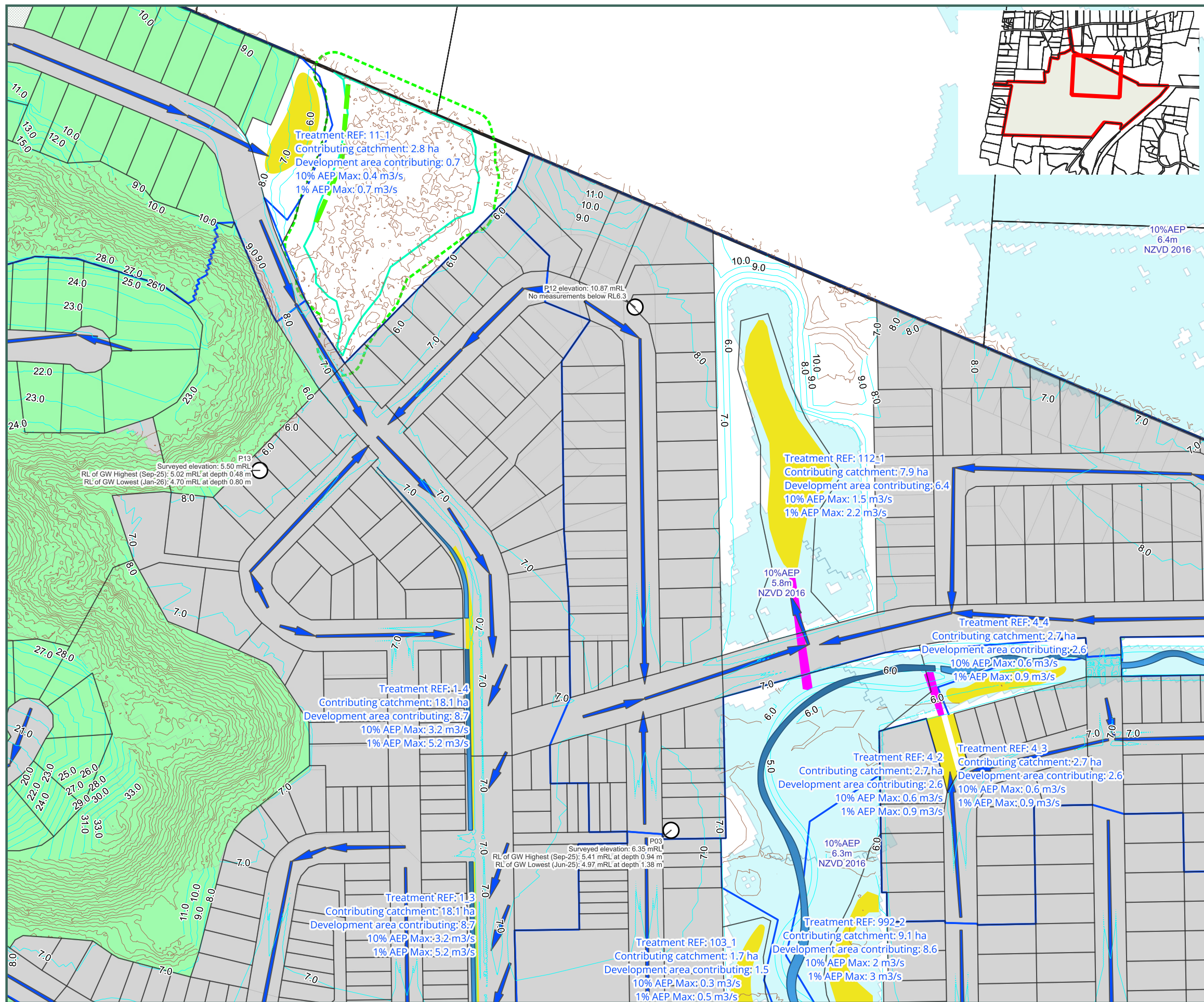
DESIGNED BY	JJH
DRAWN BY	JJH
APPROVED BY	PT

DATE 2026-03-13

SCALE Refer Scale Bar

2911-ALL-SW-412

This drawing contains data from other sources and has been prepared for a specific site and event. Landlink Limited does not accept any liability for its accuracy, content or unauthorised use.



0 20 40 60 80 100 m

**Legend**

- Ex drains retained
- Exceedence Outlet and Rip Rap
- Stormwater Management/Treatment Area
- Wetlands Retained
- Wetlands buffer
- Stormwater Conveyance
- Proposed SW catchment boundaries (Indicative)

**Area Classification**

- 70% Imp
- Treated / Attenuated or Greenfield
- No Flow

**Stormwater Catchment and Features Plan**  
 Sheet 4 of 14

Waikanae North Developments Ltd

Waikanae North  
 Peka Peka, Kapiti Coast

© Landlink Limited 2025



1 Ngaio Road, Waikanae 5036 + contactus@Landlink.nz

STAGE	ALL
REVISION	C
REVISION DETAILS	Issued For Consent

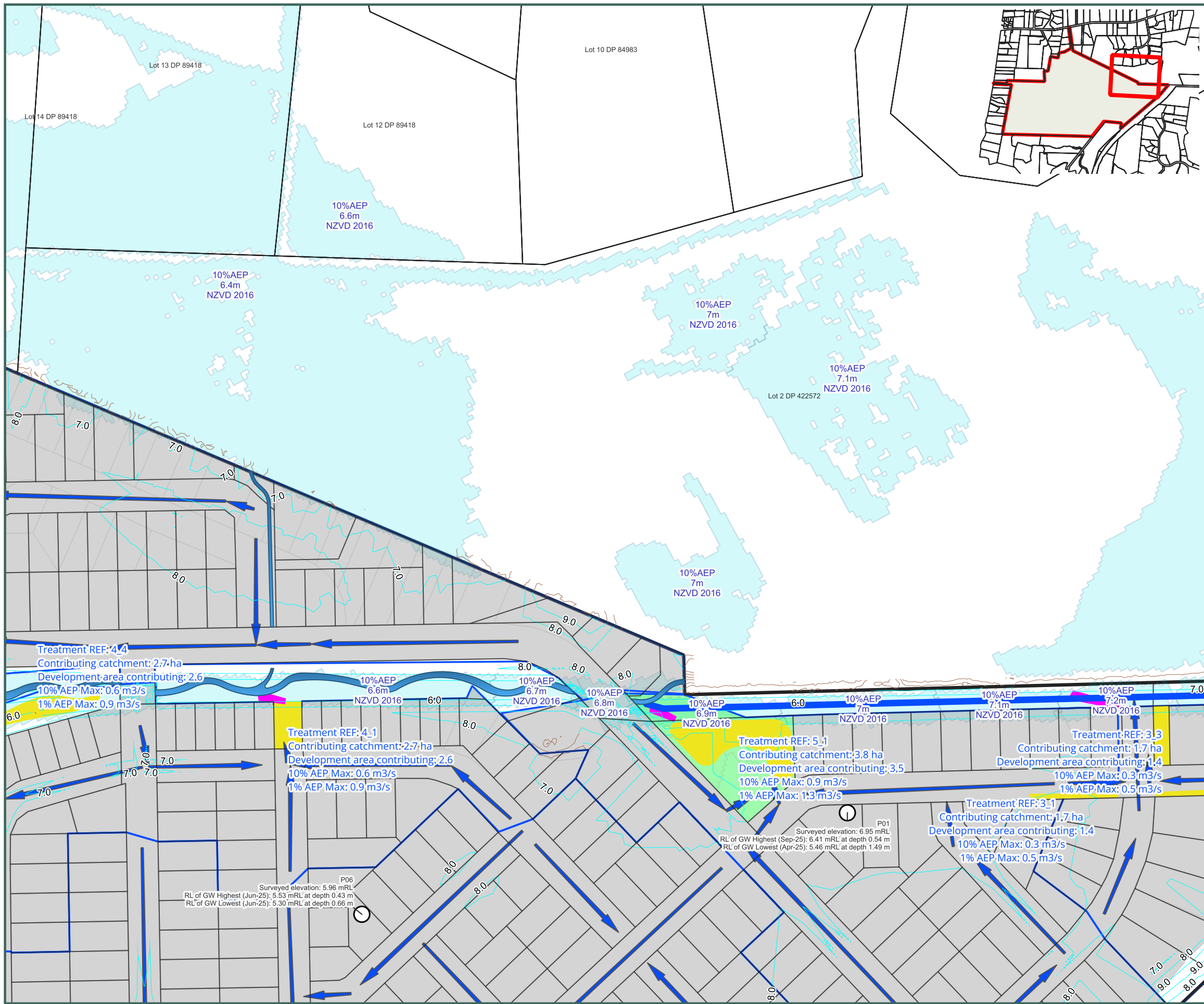
DESIGNED BY	JJH
DRAWN BY	JJH
APPROVED BY	PT

DATE 2026-03-13

SCALE Refer Scale Bar

**2911-ALL-SW-413**

This drawing contains data from other sources and has been prepared for a specific site and event. Landlink Limited does not accept any liability for its accuracy, content or unauthorised use.



0 20 40 60 80 100 m



Legend

- █ Exceedence Outlet and Rip Rap
  - Stormwater Management/Treatment Area
  - ▶ Stormwater Conveyance
  - Proposed SW catchment boundaries (Indicative)
- Area Classification
- 70% Imp
  - Treated / Attenuated or Greenfield
  - Proposed Overflow Drain

Notes:

1. Layout and levels are indicative and subject to refinement through detailed modelling.
2. 10% AEP conveyed via primary network; 1% AEP exceedance routed along road corridors.
3. Water-quality discharges to wetlands to be diffuse (refer Typology Plans 480 & 481).
4. Treatment devices to be located outside the modelled 10% AEP extent (subject to detailed design).
5. Proprietary devices may be used where groundwater levels constrain infiltration, consistent with the SMP.
6. Catchment-specific calculations are provided in the Landlink Stormwater Management Plan and appendices.

**Stormwater Catchment and Features Plan**

Sheet 5 of 14

Waikanae North Developments Ltd

Waikanae North

Peka Peka, Kapiti Coast

© Landlink Limited 2025



1 Ngaio Road, Waikanae 5036 + contactus@Landlink.nz

STAGE	ALL
REVISION	C
REVISION DETAILS	Issued For Consent

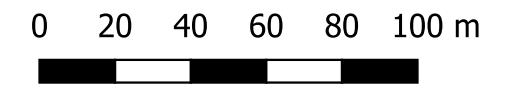
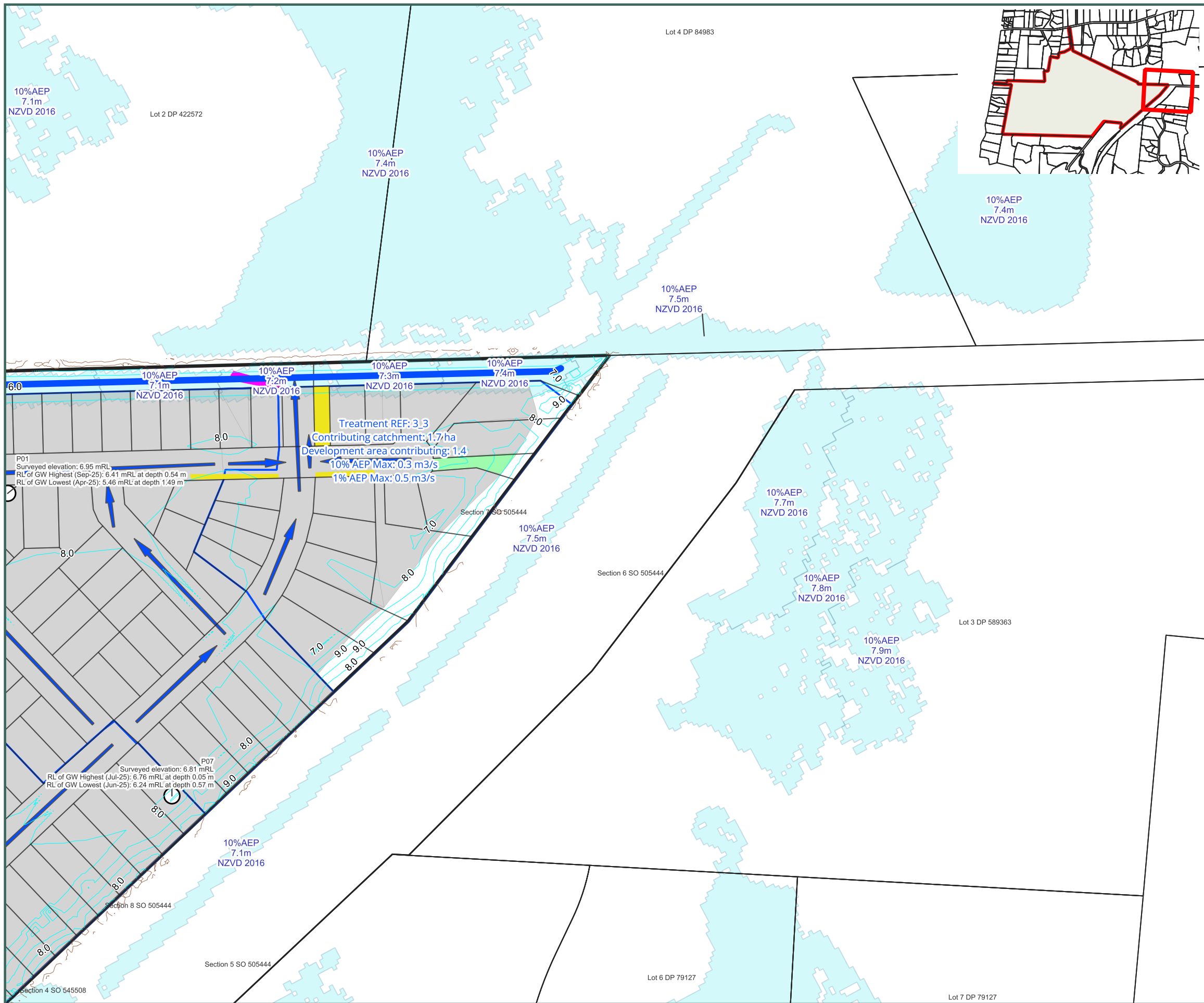
DESIGNED BY	JJH
DRAWN BY	JJH
APPROVED BY	PT

DATE 2026-03-13

SCALE Refer Scale Bar

**2911-ALL-SW-414**

This drawing contains data from other sources and has been prepared for a specific site and event. Landlink Limited does not accept any liability for its accuracy, content or unauthorised use.



Legend

- █ Exceedence Outlet and Rip Rap
  - Stormwater Management/Treatment Area
  - ▶ Stormwater Conveyance
  - Proposed SW catchment boundaries (Indicative)
- Area Classification
- 70% Imp
  - Treated / Attenuated or Greenfield
  - Proposed Overflow Drain

Notes:

1. Layout and levels are indicative and subject to refinement through detailed modelling.
2. 10% AEP conveyed via primary network; 1% AEP exceedance routed along road corridors.
3. Water-quality discharges to wetlands to be diffuse (refer Typology Plans 480 & 481).
4. Treatment devices to be located outside the modelled 10% AEP extent (subject to detailed design).
5. Proprietary devices may be used where groundwater levels constrain infiltration, consistent with the SMP.
6. Catchment-specific calculations are provided in the Landlink Stormwater Management Plan and appendices.

**Stormwater Catchment and Features Plan**

Sheet 6 of 14

Waikanae North Developments Ltd

Waikanae North

Peka Peka, Kapiti Coast

© Landlink Limited 2025



1 Ngaio Road, Waikanae 5036 + contactus@Landlink.nz

This drawing contains data from other sources and has been prepared for a specific site and event. Landlink Limited does not accept any liability for its accuracy, content or unauthorised use.

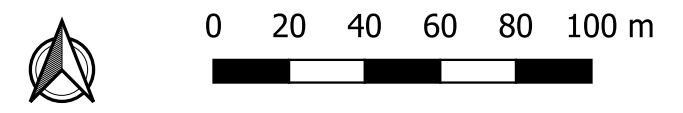
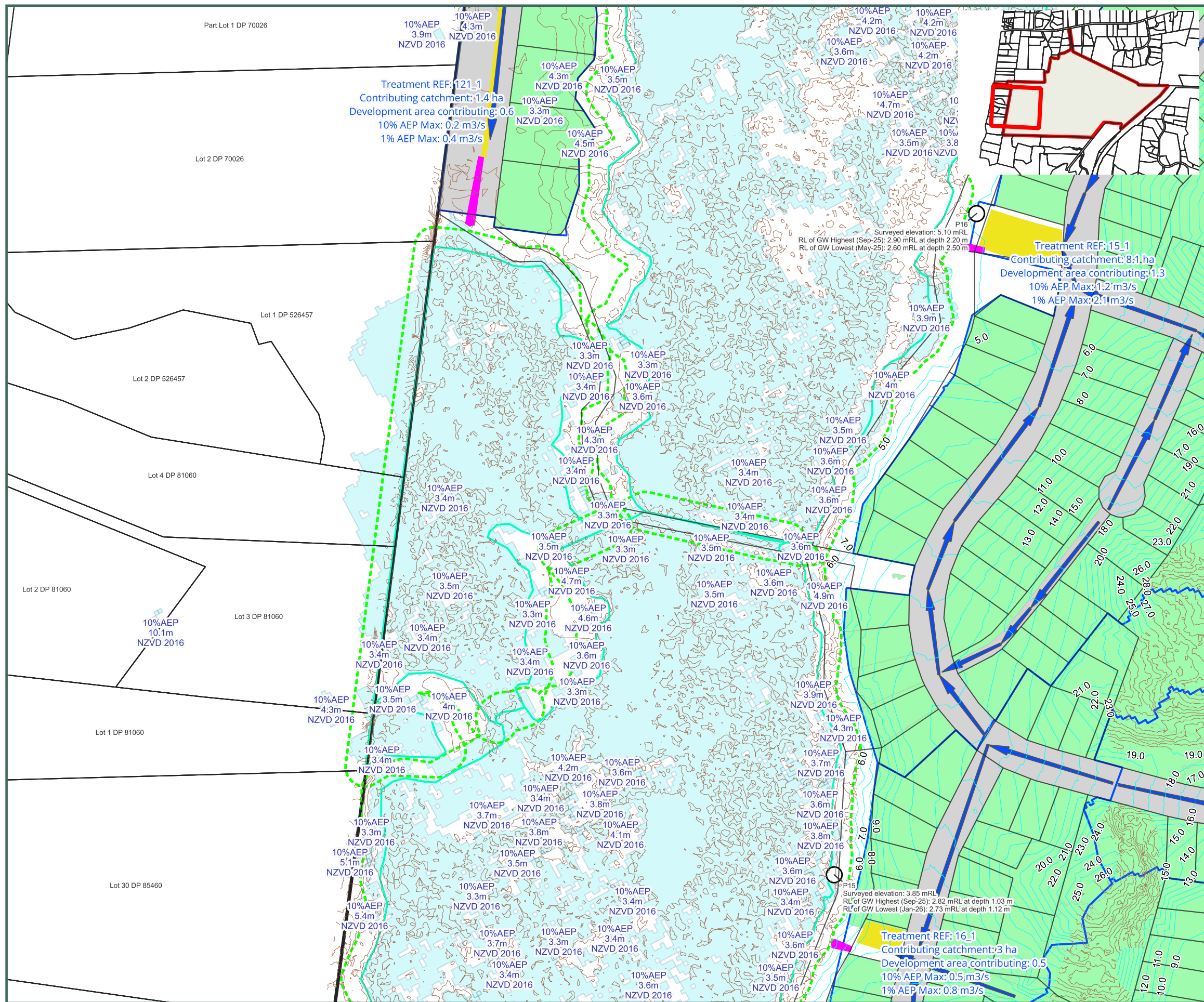
STAGE	ALL
REVISION	C
REVISION DETAILS	Issued For Consent

DESIGNED BY	JJH
DRAWN BY	JJH
APPROVED BY	PT

DATE 2026-03-13

SCALE Refer Scale Bar

2911-ALL-SW-415



- Legend**
- █ Exceedence Outlet and Rip Rap
  - Stormwater Management/Treatment Area
  - Wetlands Retained
  - Wetlands buffer
  - ▬ Stormwater Conveyance
  - Proposed SW catchment boundaries (Indicative)
- Area Classification**
- 70% Imp
  - Treated / Attenuated or Greenfield

- Notes:**
1. Layout and levels are indicative and subject to refinement through detailed modelling.
  2. 10% AEP conveyed via primary network; 1% AEP exceedance routed along road corridors.
  3. Water-quality discharges to wetlands to be diffuse (refer Typology Plans 480 & 481).
  4. Treatment devices to be located outside the modelled 10% AEP extent (subject to detailed design).
  5. Proprietary devices may be used where groundwater levels constrain infiltration, consistent with the SMP.
  6. Catchment-specific calculations are provided in the Landlink Stormwater Management Plan and appendices.

**Stormwater Catchment and Features Plan**

Sheet 7 of 14

Waikanae North Developments Ltd

Waikanae North

Peka Peka, Kapiti Coast

© Landlink Limited 2025



1 Ngaio Road, Waikanae 5036 + contactus@Landlink.nz

STAGE	ALL
REVISION	C
REVISION DETAILS	Issued For Consent

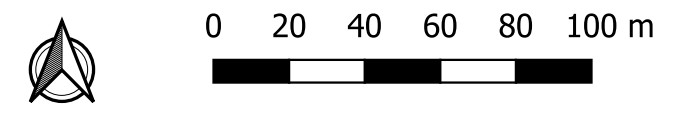
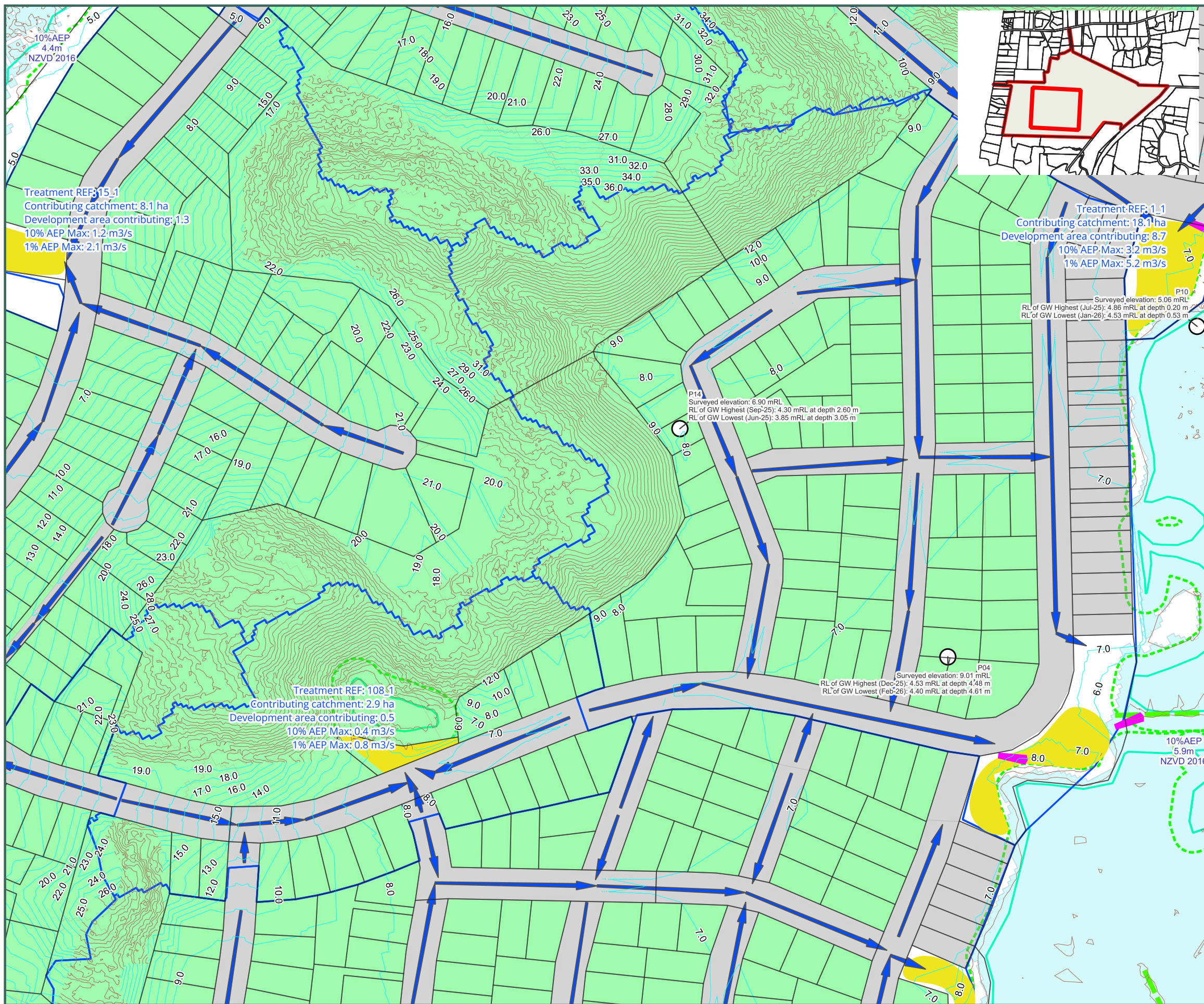
DESIGNED BY	JJH
DRAWN BY	JJH
APPROVED BY	PT

DATE 2026-03-13

SCALE Refer Scale Bar

2911-ALL-SW-416

This drawing contains data from other sources and has been prepared for a specific site and event. Landlink Limited does not accept any liability for its accuracy, content or unauthorised use.



- Legend**
- Ex drains retained
  - Exceedence Outlet and Rip Rap
  - Stormwater Management/Treatment Area
  - Wetlands Retained
  - Wetlands buffer
  - Stormwater Conveyance
  - Proposed SW catchment boundaries (Indicative)
- Area Classification**
- 70% Imp
  - Treated / Attenuated or Greenfield

- Notes:**
1. Layout and levels are indicative and subject to refinement through detailed modelling.
  2. 10% AEP conveyed via primary network; 1% AEP exceedance routed along road corridors.
  3. Water-quality discharges to wetlands to be diffuse (refer Typology Plans 480 & 481).
  4. Treatment devices to be located outside the modelled 10% AEP extent (subject to detailed design).
  5. Proprietary devices may be used where groundwater levels constrain infiltration, consistent with the SMP.
  6. Catchment-specific calculations are provided in the Landlink Stormwater Management Plan and appendices.

**Stormwater Catchment and Features Plan**  
Sheet 8 of 14

Waikanae North Developments Ltd

Waikanae North  
Peka Peka, Kapiti Coast

© Landlink Limited 2025



1 Ngaio Road, Waikanae 5036 + contactus@Landlink.nz

STAGE	ALL
REVISION	C
REVISION DETAILS	Issued For Consent

DESIGNED BY	JJH
DRAWN BY	JJH
APPROVED BY	PT

DATE 2026-03-13

SCALE Refer Scale Bar

2911-ALL-SW-417

This drawing contains data from other sources and has been prepared for a specific site and event. Landlink Limited does not accept any liability for its accuracy, content or unauthorised use.