


FURNITURE AND STRUCTURES - AREA A



 Raised Timber Vegetable Planters - 3(L) x 1.5(W) x 0.45m (H)



 Bench Seating - Urban Effects Eden Deluxe Seat or Similar



 Entry Porte Cochere Bespoke Water Feature



 Pergola



 Pickleball Court



 Astroturf Bowling Green Seats and Shelters




FURNITURE AND STRUCTURES - AREA B



 Raised Timber Vegetable Planters - 3(L) x 1.5(W) x 0.45m (H)



 Bench Seating - Urban Effects Eden Deluxe Seat or Similar



 Entry Porte Cochere Bespoke Water Feature



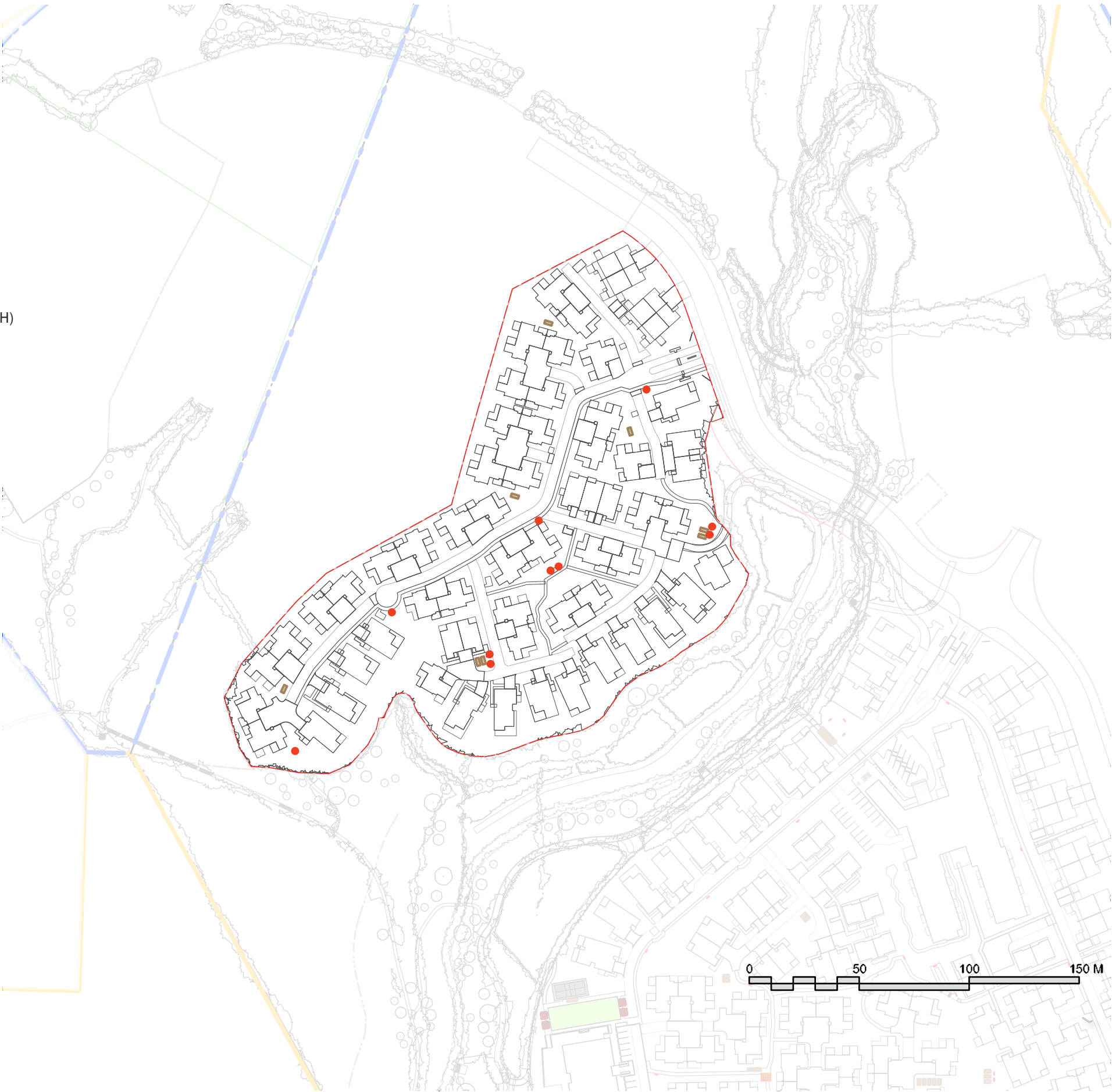
 Pergola



 Pickleball Court



 Astroturf Bowling Green Seats and Shelters



FENCE TREATMENT - AREA A



- Main gates and supporting boundaries to be stone faces with supporting hedges and 300 x 300mm intermittent posts.



- 1200mm high boundary fence and top of planted embankments to be Boundaryline 'Durapanel Axis' or similar.



- 1800mm high Boundaryline 'Sentry Panel' to contain Dementia Garden.



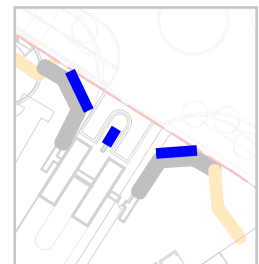
- 1200mm high Boundaryline 'PicketPanel Atlas' to top of retaining walls of Ruru Units



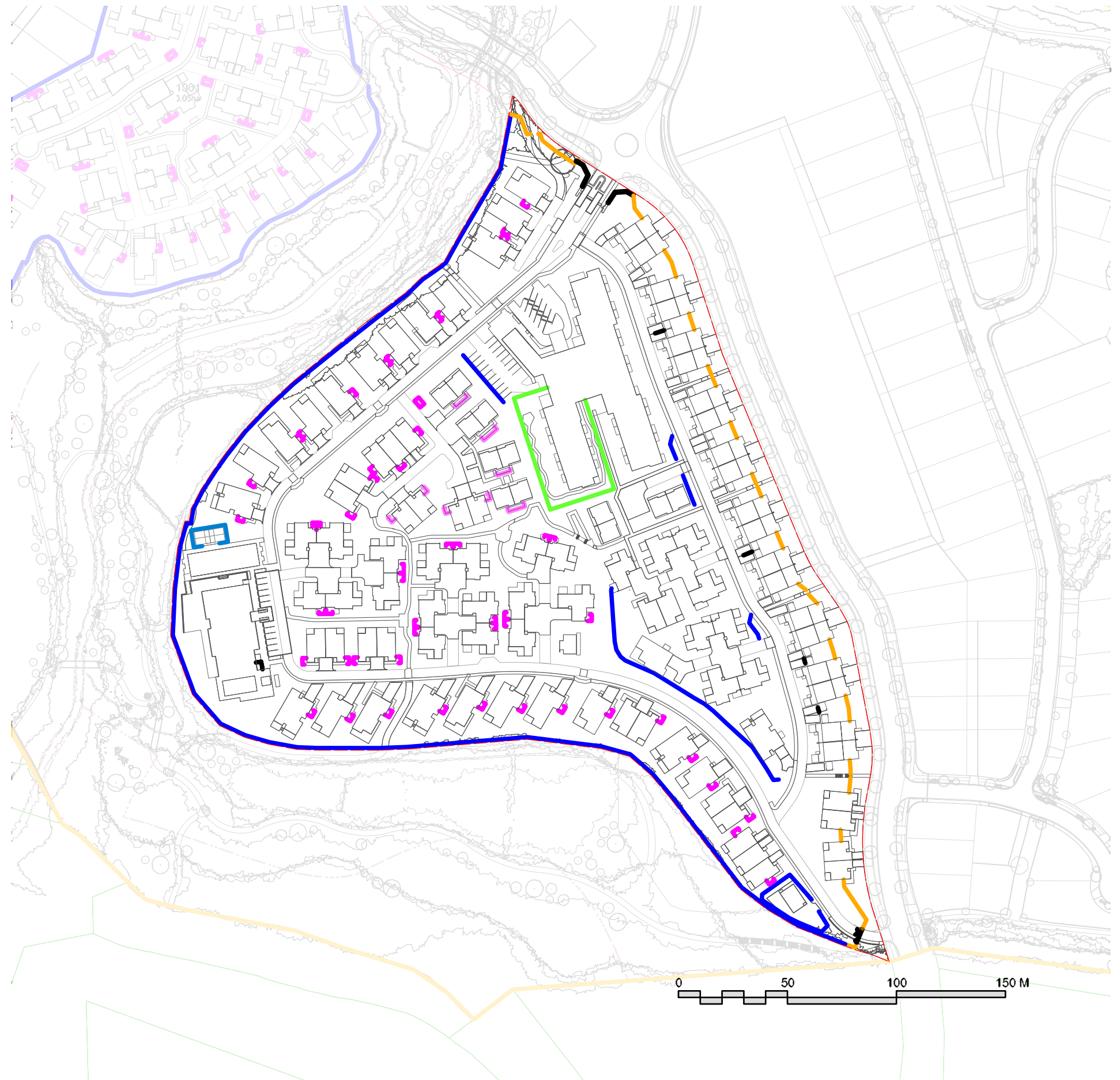
- 1800mm high Boundaryline 'PicketPanel Atlas' to screen bin enclosures.



- 2000mm high tennis court fence.



- Arvida Village entrance signage locations.



FENCE TREATMENT - AREA B



○ Main gates and supporting boundaries to be stone faces with supporting hedges and 300 x 300mm intermittent posts.



○ 1200mm high boundary fence and top of planted embankments to be Boundaryline 'Durapanel Axis' or similar.



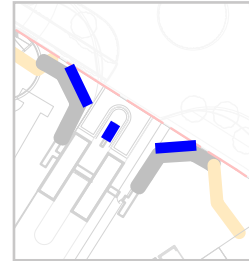
○ 1800mm high Boundaryline 'Sentry Panel' to contain Dementia Garden.



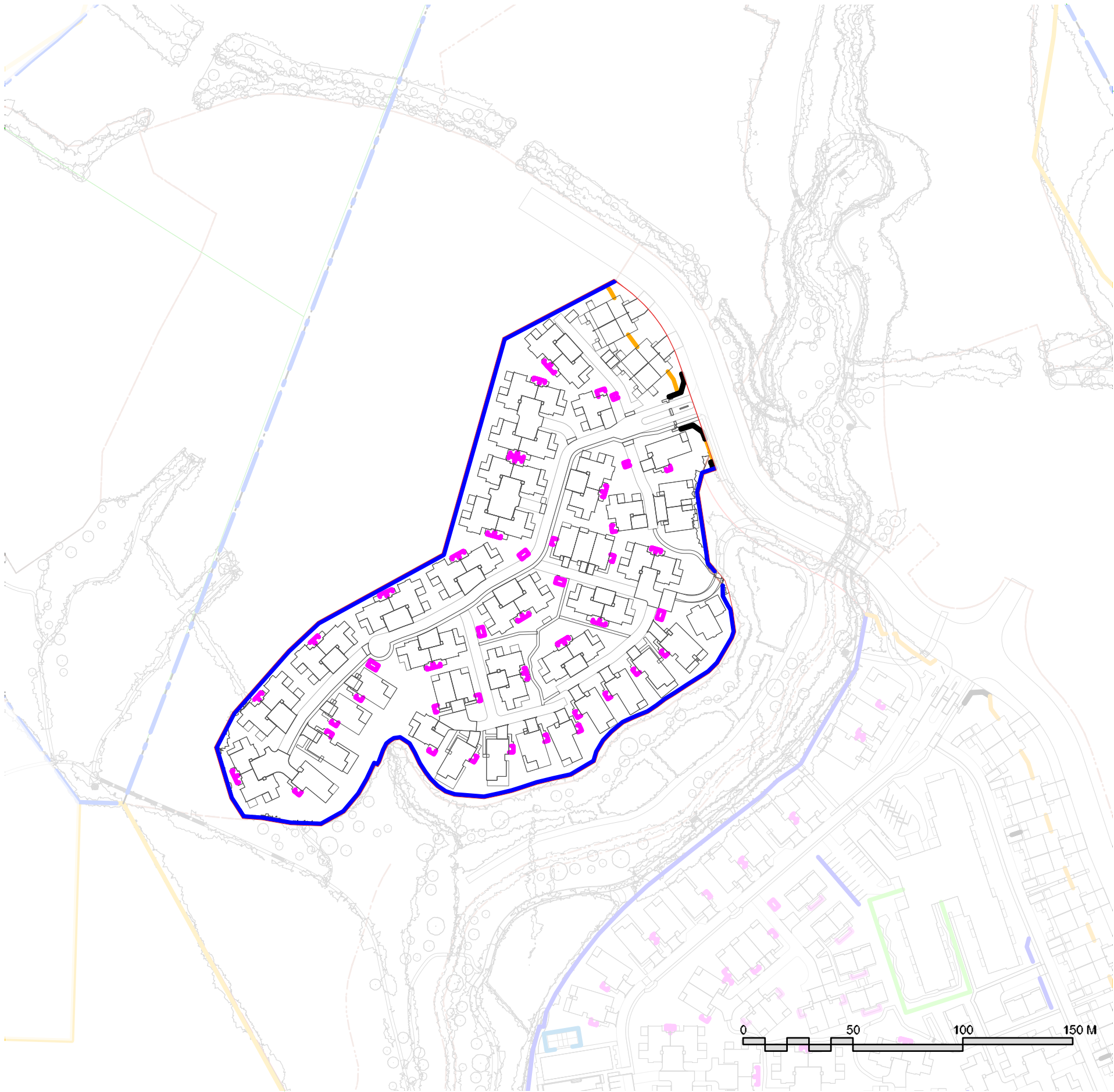
○ 1200mm high Boundaryline 'PicketPanel Atlas' to top of retaining walls of Ruru Units



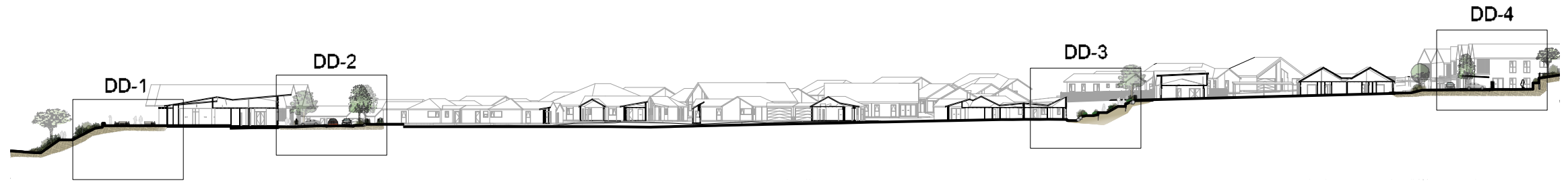
○ 1800mm high Boundaryline 'PicketPanel Atlas' to screen bin enclosures.



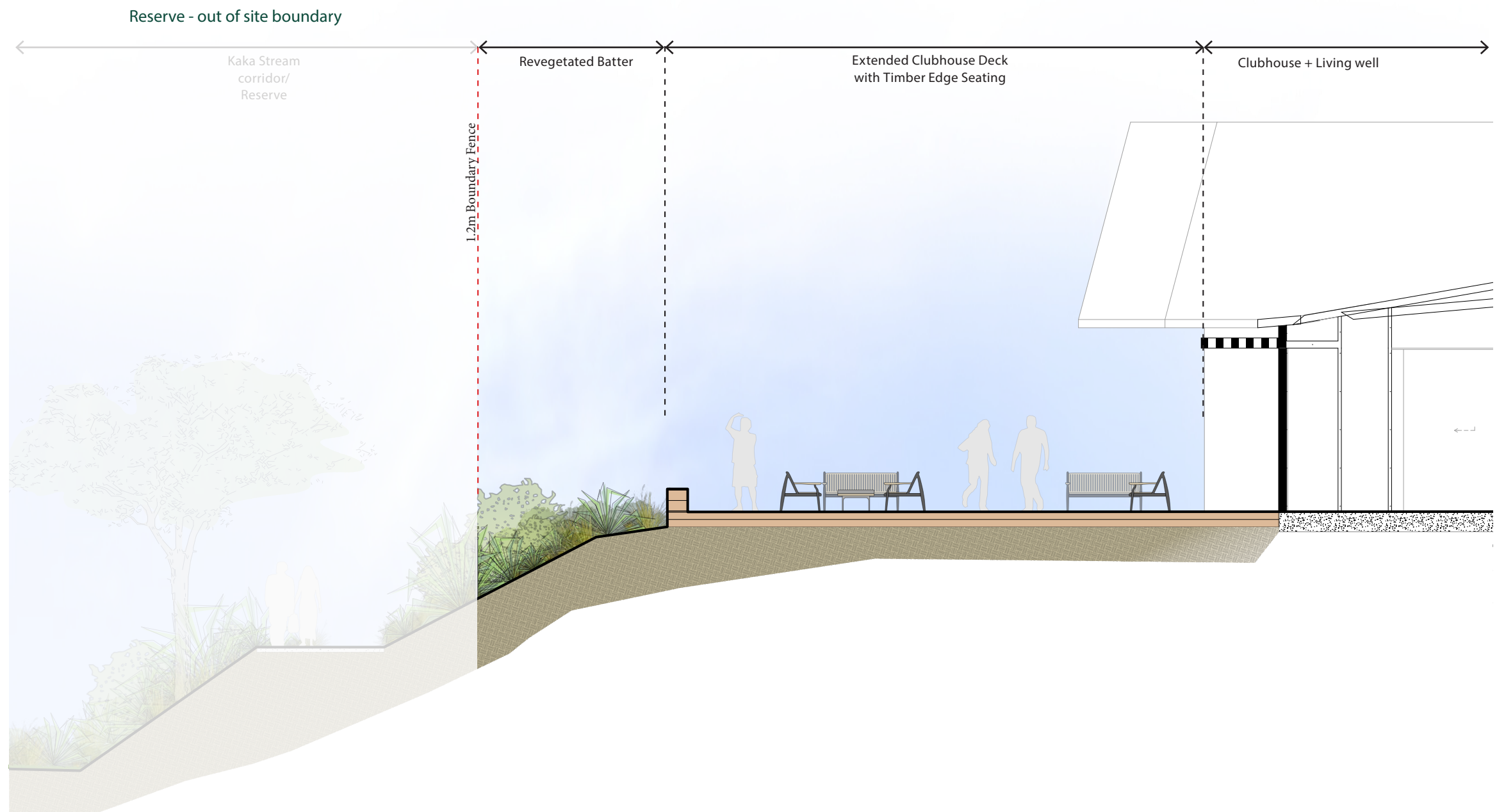
— Arvida Village entrance signage locations.



SITE SECTIONS



SECTION DD : 1000 @ A3

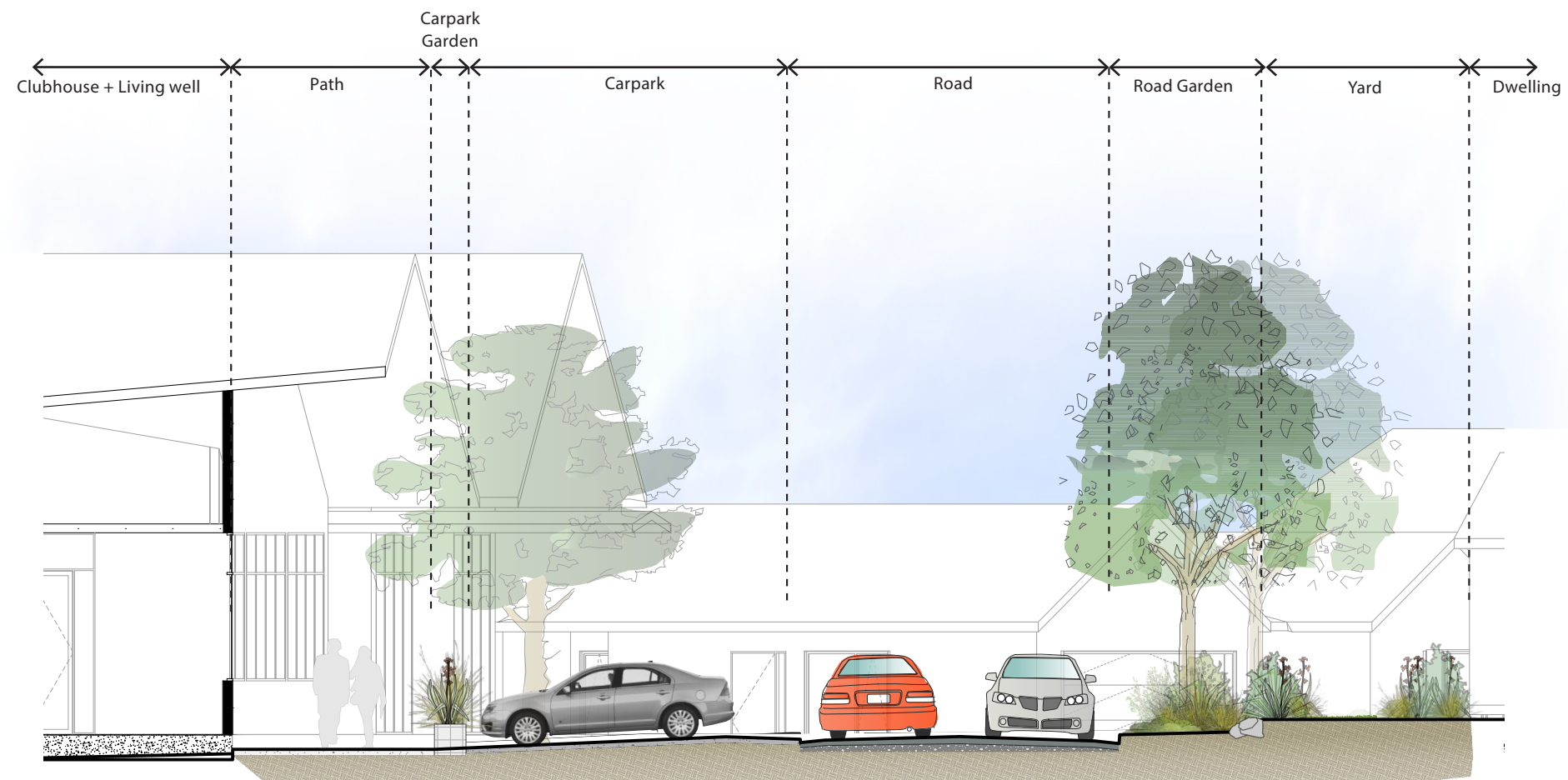


SECTION DD-1_1:100 @ A3

SITE SECTIONS



SECTION DD : 1000 @ A3

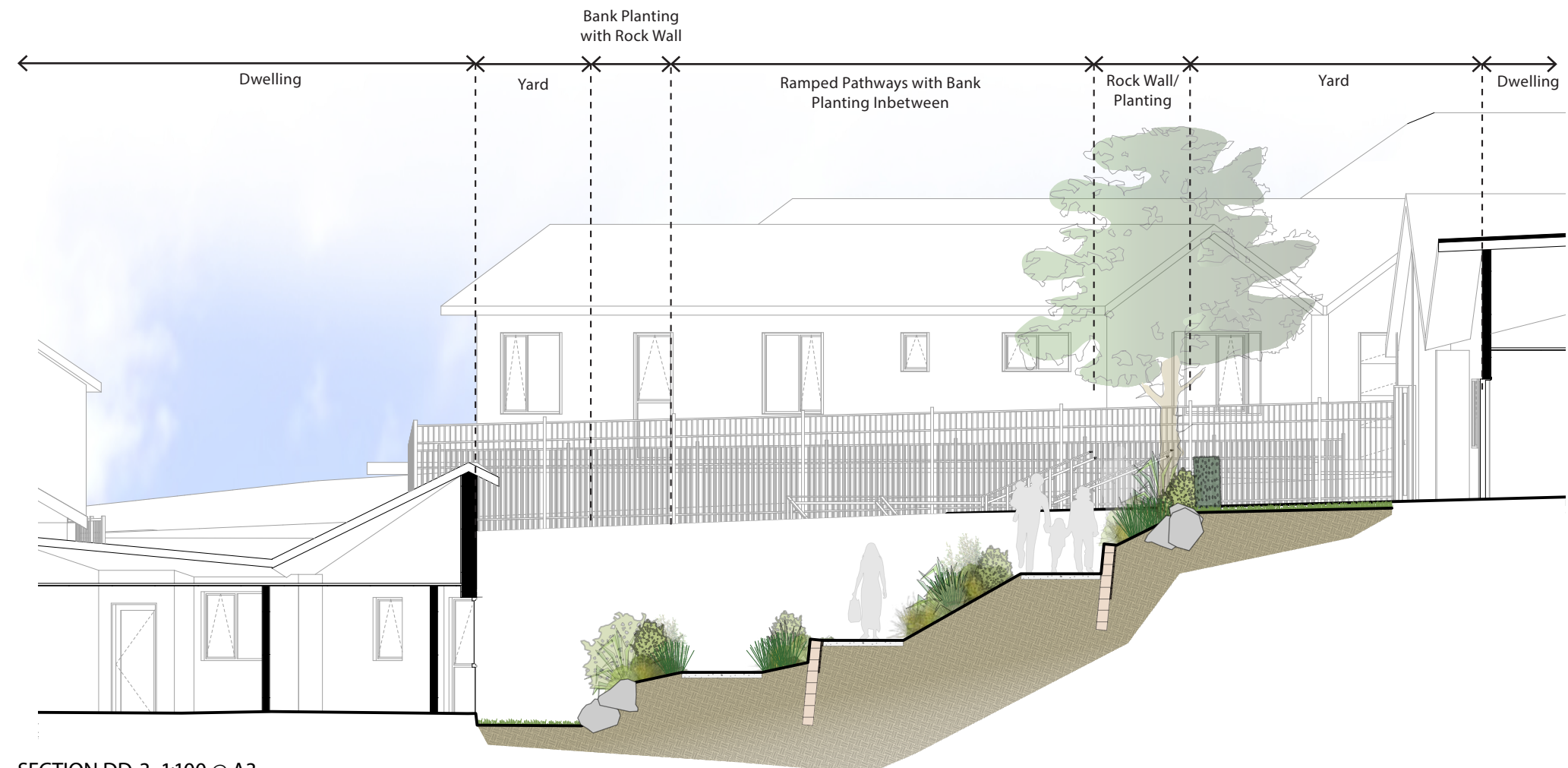


SECTION DD-2_1:100 @ A3

SITE SECTIONS



SECTION DD : 1000 @ A3



SECTION DD-3_1:100 @ A3

SITE SECTIONS



SECTION DD : 1000 @ A3



SECTION DD-4_1:100 @ A3

LIGHTING STRATEGY - AREA A



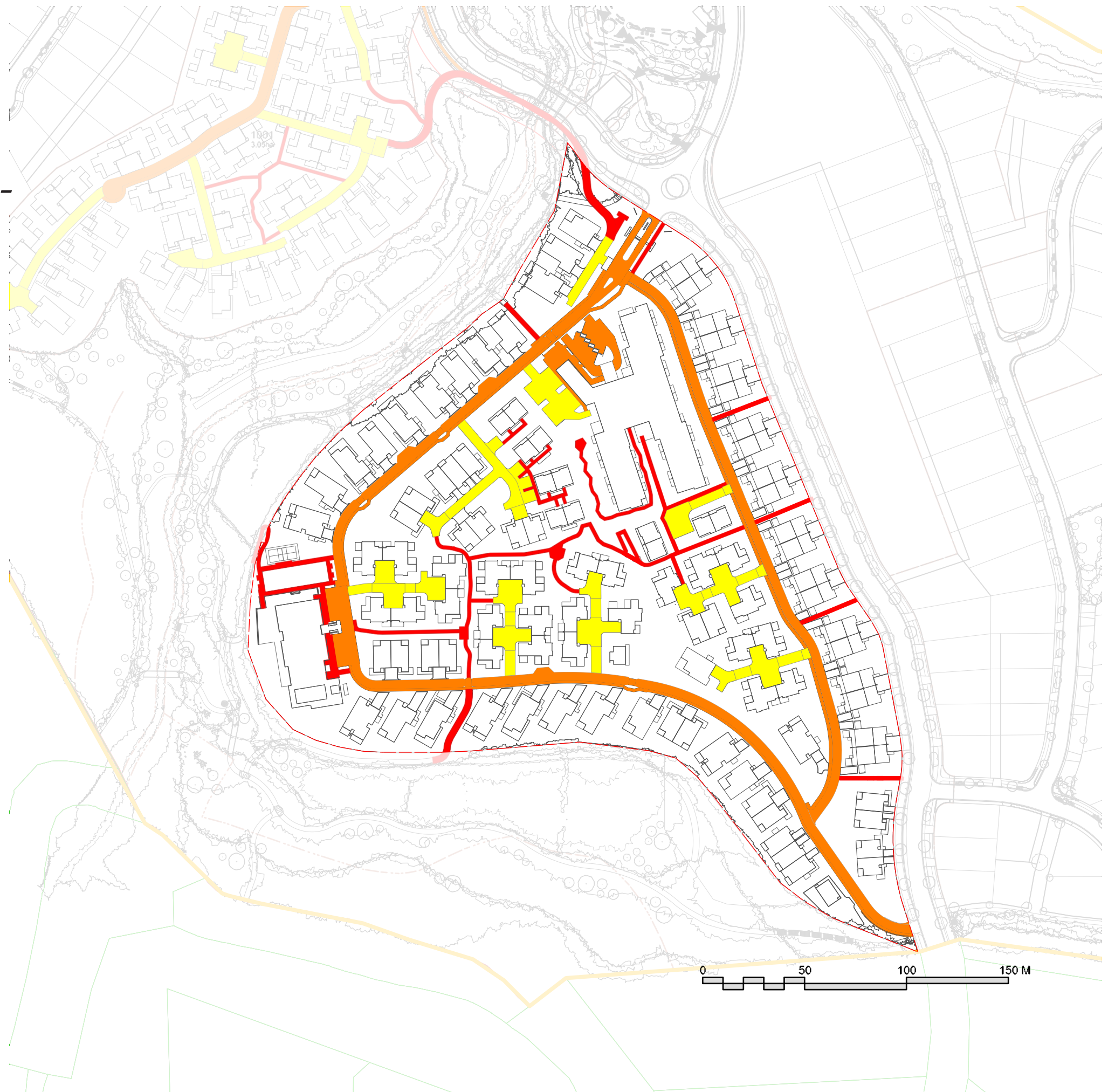
Main village road lighting using 4.5m high lighting standards.



Carpark and cluster precinct lighting to be downward facing bollard lighting up to 1.5m in height.



Pedestrian paths to be lit using low level type lighting 0.5 - 0.8m in height.



LIGHTING STRATEGY - AREA B



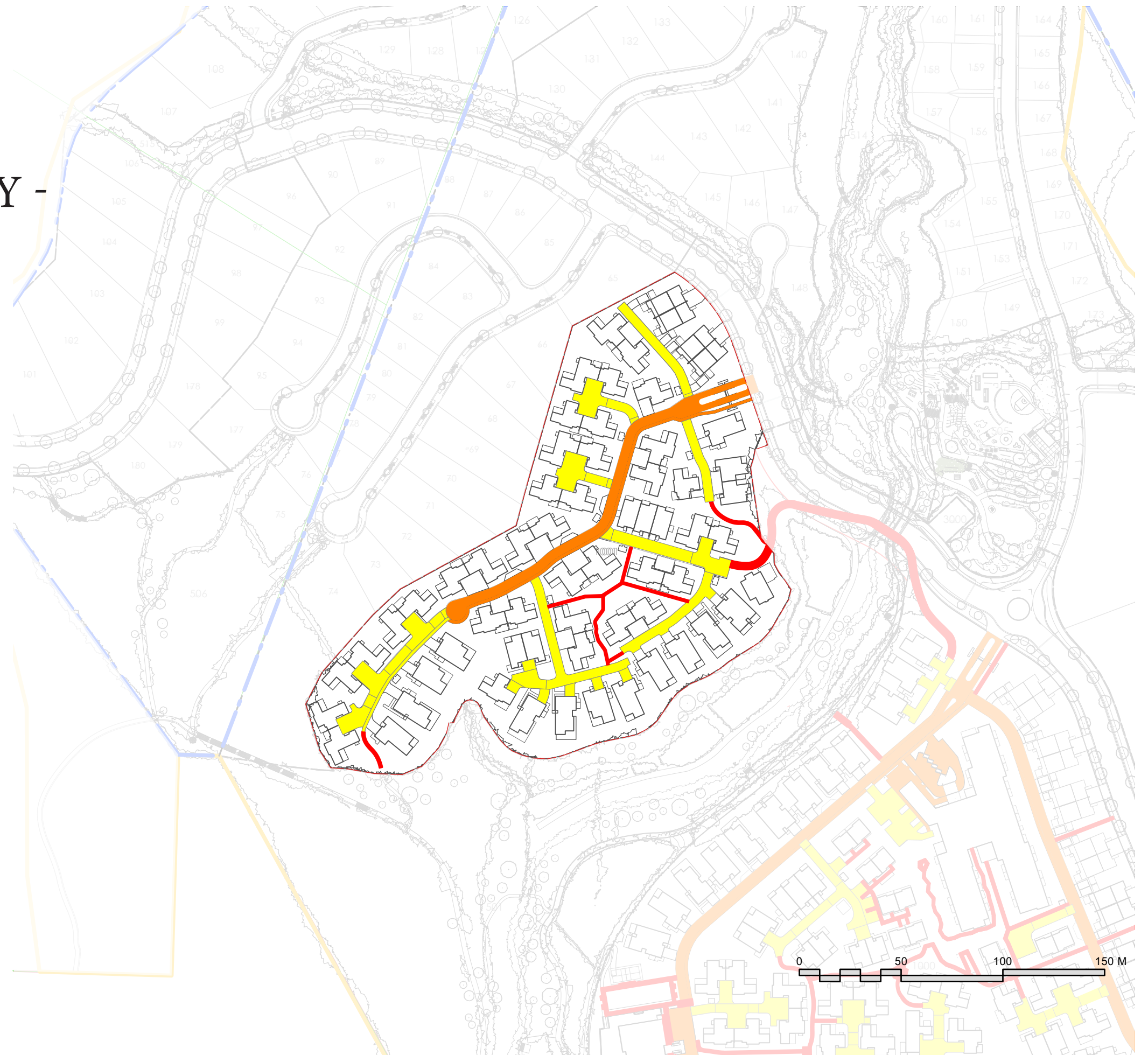
Main village road lighting using
4.5m high lighting standards.






Carpark and cluster precinct
lighting to be downward facing
bollard lighting up to 1.5m in
height.



Pedestrian paths to be lit using
low level type lighting 0.5 - 0.8m
in height.



SERVICING STRATEGY

-  Village maintenance and general storage.
-  Communal litter collection and recycling centers.
-  Private litter collection and recycling locations.

