



LEGEND

- Wind Turbines
- Sub Station
- Transmission Line Route
- Civil Works Design
- Wind Farm Site

Vegetation Type and Ecological Value

Very high

- 1,Bog wetland
- 7,Fen wetland
- 11,Pahautea/southern rātā-kāmahi forest
- 4,Southern rātā-kamahi forest

High

- 10,Mānuka-haumakaroa-mountain holly forest
- 15,Mānuka/copper tussock grassland
- 32,Indigenous broadleaved forest and scrub
- 35,Mānuka-inaka/copper tussock marsh
- 36,Mānuka/copper tussock shrubland

Moderate

- 3,Mānuka-inaka-mountain holly-(gorse) scrub and shrubland
- 5,[Mānuka]/tauhinu-inaka-*Veronica odora* scrub and shrubland
- 8,Mānuka forest and scrub
- 13,[Mānuka]/gorse-tauhinu scrub
- 14,[Gorse]/copper tussock grassland
- 25,Mānuka scrub/shrubland
- 28,Mānuka scrub
- 29,Kohuhu/gorse/rarauhe scrub
- 30,Exotic conifer plantation forest
- 32,Indigenous broadleaved forest and scrub
- 33,Mixed indigenous-conifer forest and scrub

Negligible

- 21,Gorse scrub
- 31,Exotic grazed grassland

Low

- 2,Exotic unmanaged grassland
- 23,Gorse/copper tussock shrubland

MAP SCALE



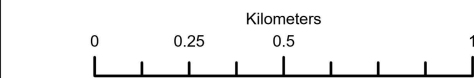
Scale: 1:20,000

PRINT DATE

12/08/2025

VERSION

1.0



CREDITS:



Wildlands

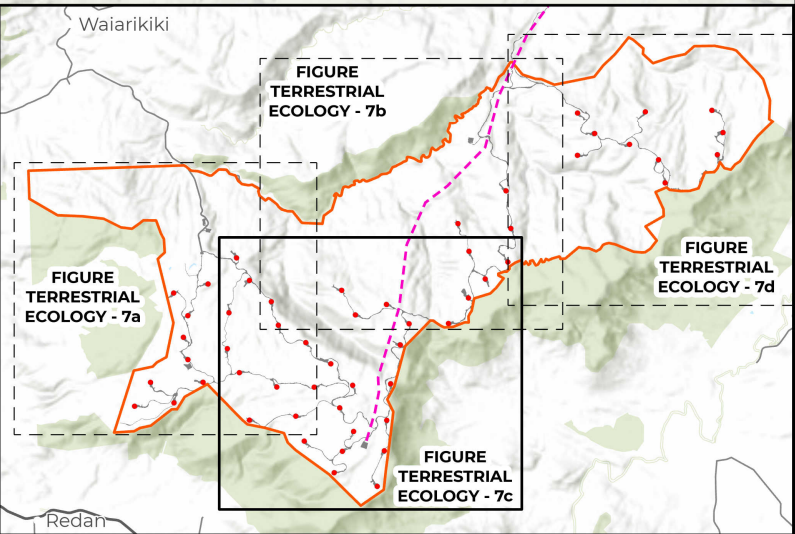
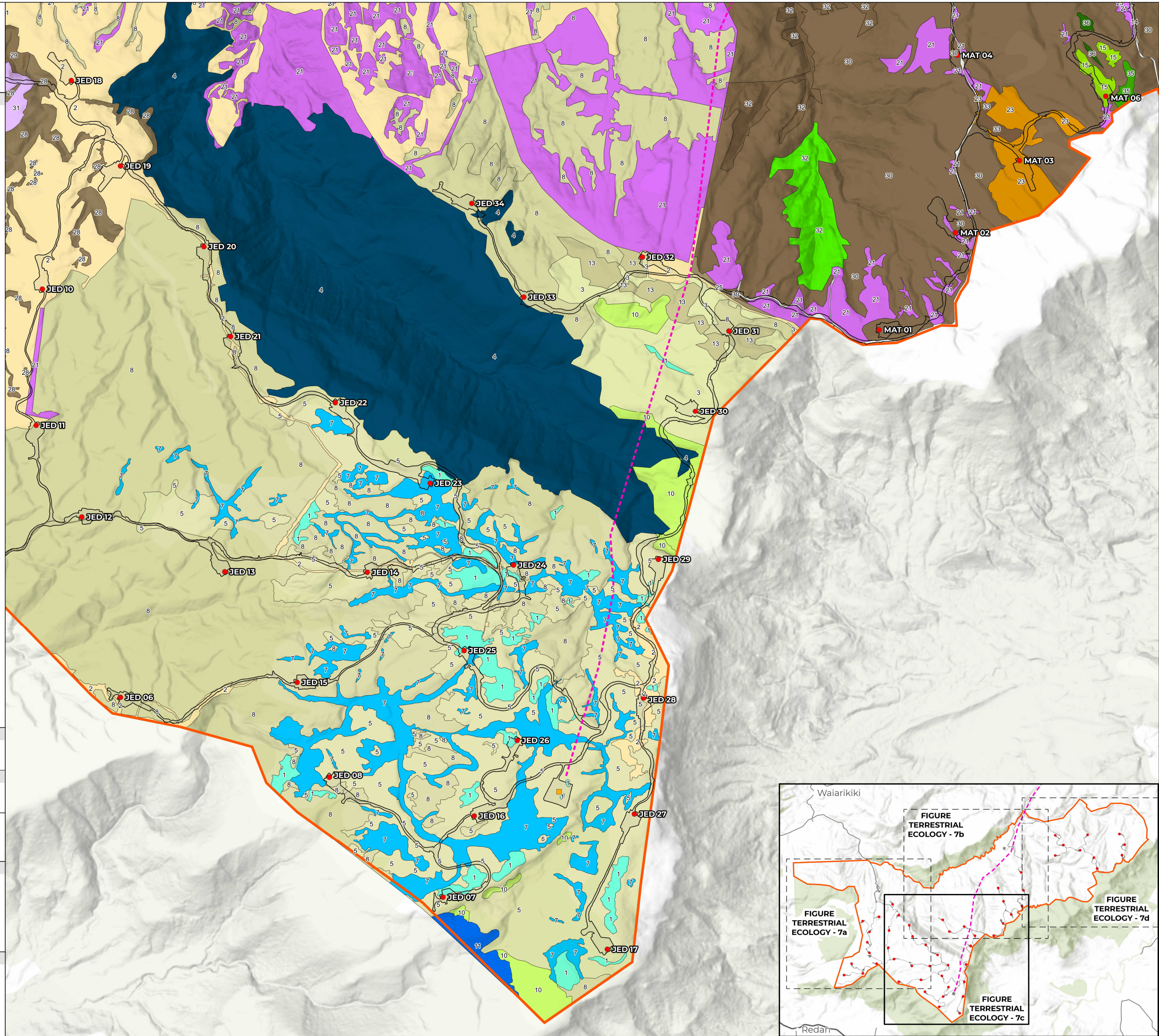
Ecological data provided by Wildlands Consultants

TITLE

FIGURE TERRESTRIAL ECOLOGY - 7c

VEGETATION ECOLOGICAL
VALUES AND TYPES

WIND FARM SITE - CENTRE SOUTH





LEGEND

- Wind Turbines
- Grid Injection Point (GIP)
- Sub Station
- Transmission Line Route
- Transpower 220kV Transmission Line
- Civil Works Design
- Wind Farm Site

Vegetation Type and Ecological Value

Very high

6,Copper tussock/rautahi marsh

High

15,Mānuka/copper tussock grassland

20,Copper tussock grassland

32,Indigenous broadleaved forest and scrub

35,Mānuka-inaka/copper tussock marsh

Moderate

14,[Gorse]/copper tussock grassland

16,[Mānuka-gorse]/copper tussock grassland

17,[Wilding conifers]/copper tussock shrubland

18,[Wilding conifers]/copper tussock grassland

24,Inaka scrub

25,Mānuka scrub/shrubland

26,Mānuka-gorse/copper tussock shrubland

27,Wilding conifers/mānuka-copper tussock shrubland

30,Exotic conifer plantation forest

33,Mixed indigenous-conifer forest and scrub

34,Indigenous scrub and shrubland

Negligible

19,[Wilding conifers]/gorse-copper tussock scrub

21,Gorse scrub

Low

22,Gorse/copper tussock grassland

23,Gorse/copper tussock shrubland

MAP SCALE



Scale: 1:20,000

PRINT DATE

20/08/2025

VERSION

1.0



CREDITS:



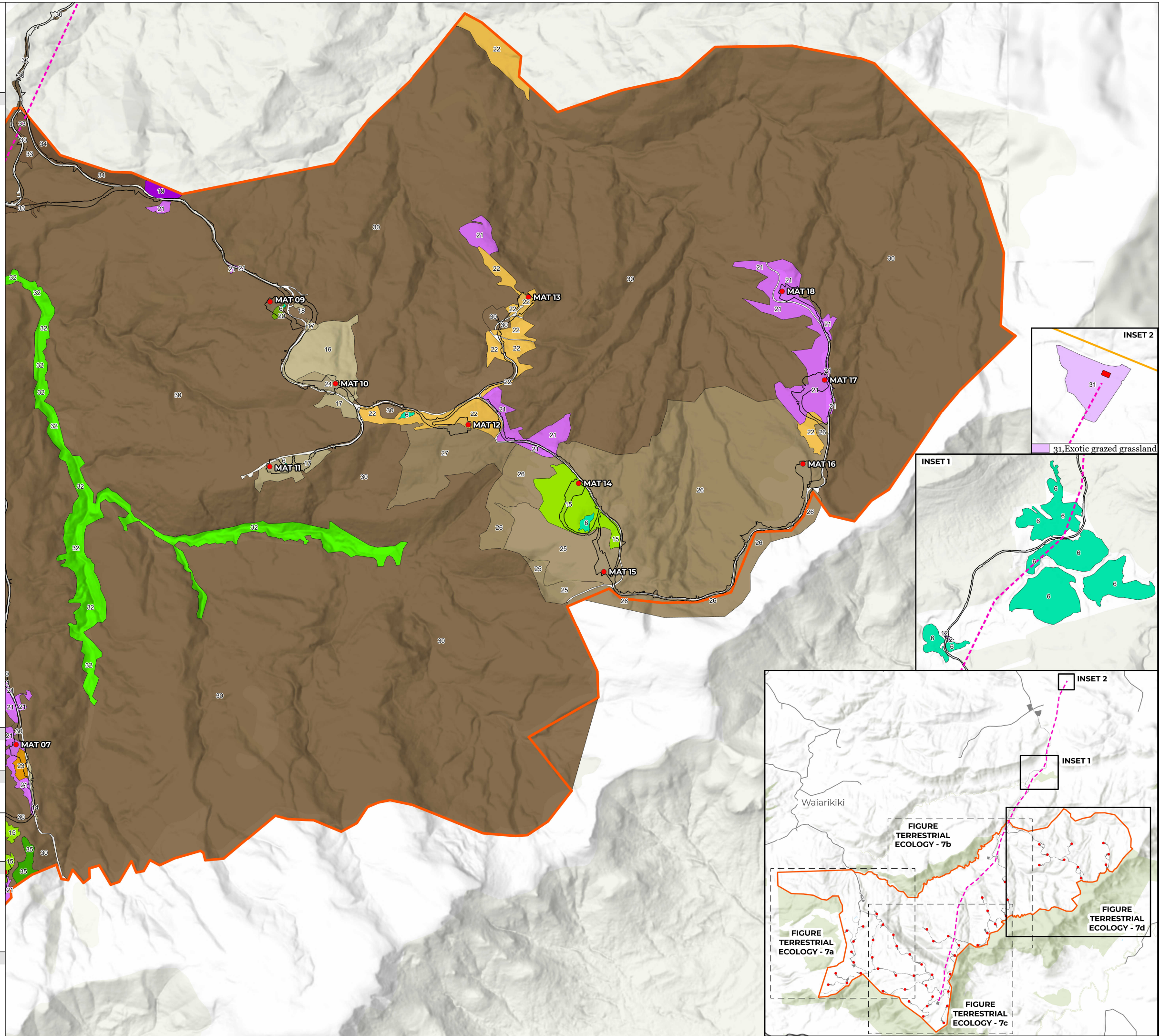
Wildlands

Ecological data provided by Wildlands Consultants

TITLE

FIGURE TERRESTRIAL ECOLOGY - 7d

VEGETATION ECOLOGICAL
VALUES AND TYPES
WIND FARM SITE - EAST





LEGEND

Wind Farm

- Wind Turbines
- Sub Station
- Transmission Line Route
- Civil Works Design
- Jedburgh Plateau
- Wind Farm Site

Indicative Surplus Fill Disposal Sites

- Blanket Surplus Fill Disposal Sites
- Gully Surplus Fill Disposal Sites
- Shoulder Surplus Fill Disposal Sites

MAP SCALE



Scale: 1:25,000

PRINT DATE

6/08/2025

VERSION

1.0

CREDITS:

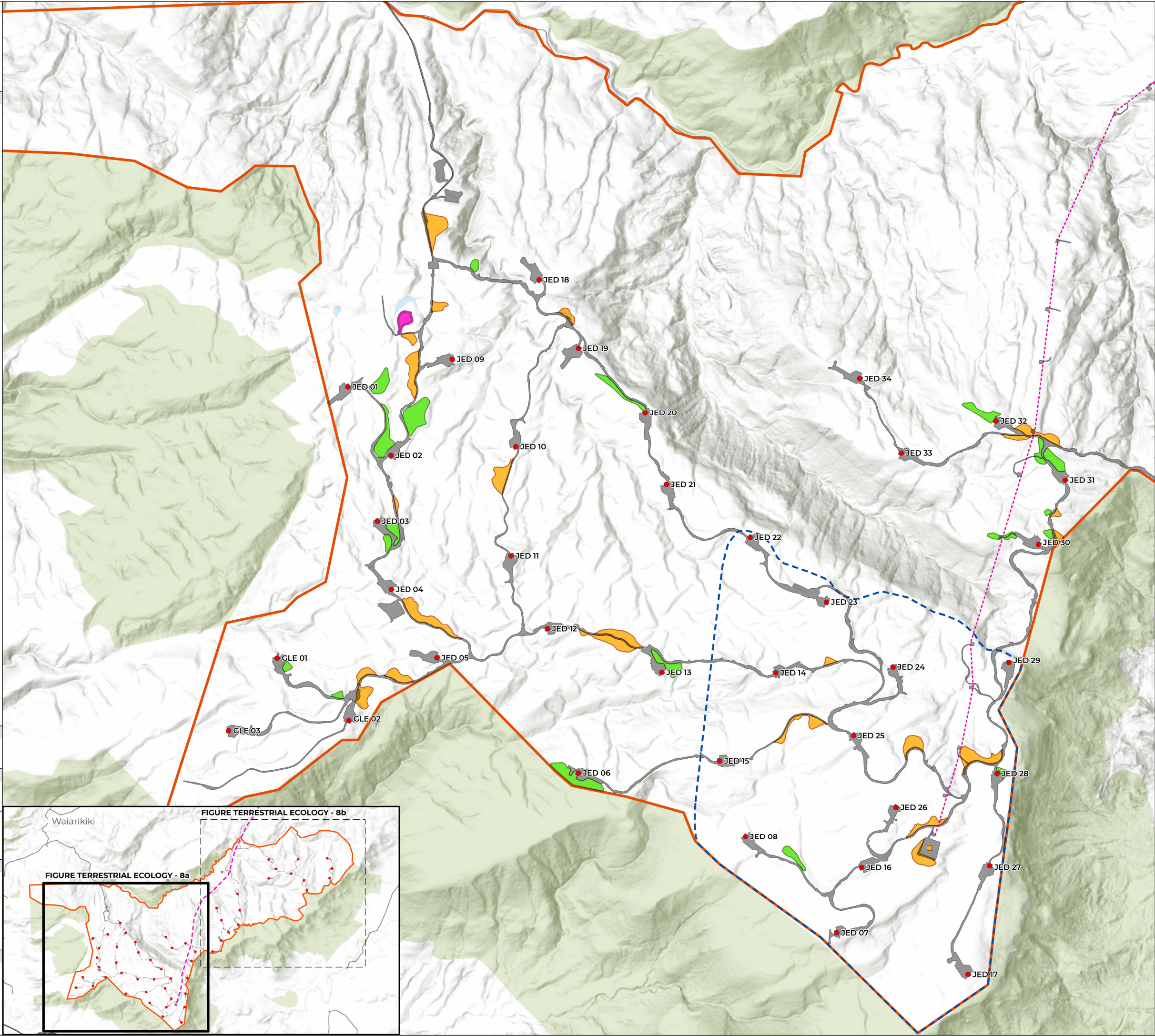


Indicative Surplus Fill Disposal Sites by Riley

TITLE

FIGURE TERRESTRIAL ECOLOGY - 8a

INDICATIVE SURPLUS FILL DISPOSAL SITES
WIND FARM SITE - WEST





LEGEND

Wind Farm

- Wind Turbines
- Transmission Line Route
- Civil Works Design
- Wind Farm Site

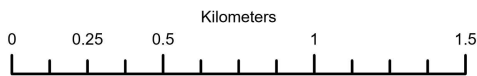
Indicative Surplus Fill Disposal Sites

- Blanket Surplus Fill Disposal Sites
- Gully Surplus Fill Disposal Sites
- Shoulder Surplus Fill Disposal Sites

MAP SCALE



Scale: 1:25,000



PRINT DATE

6/08/2025

VERSION

1.0

CREDITS:

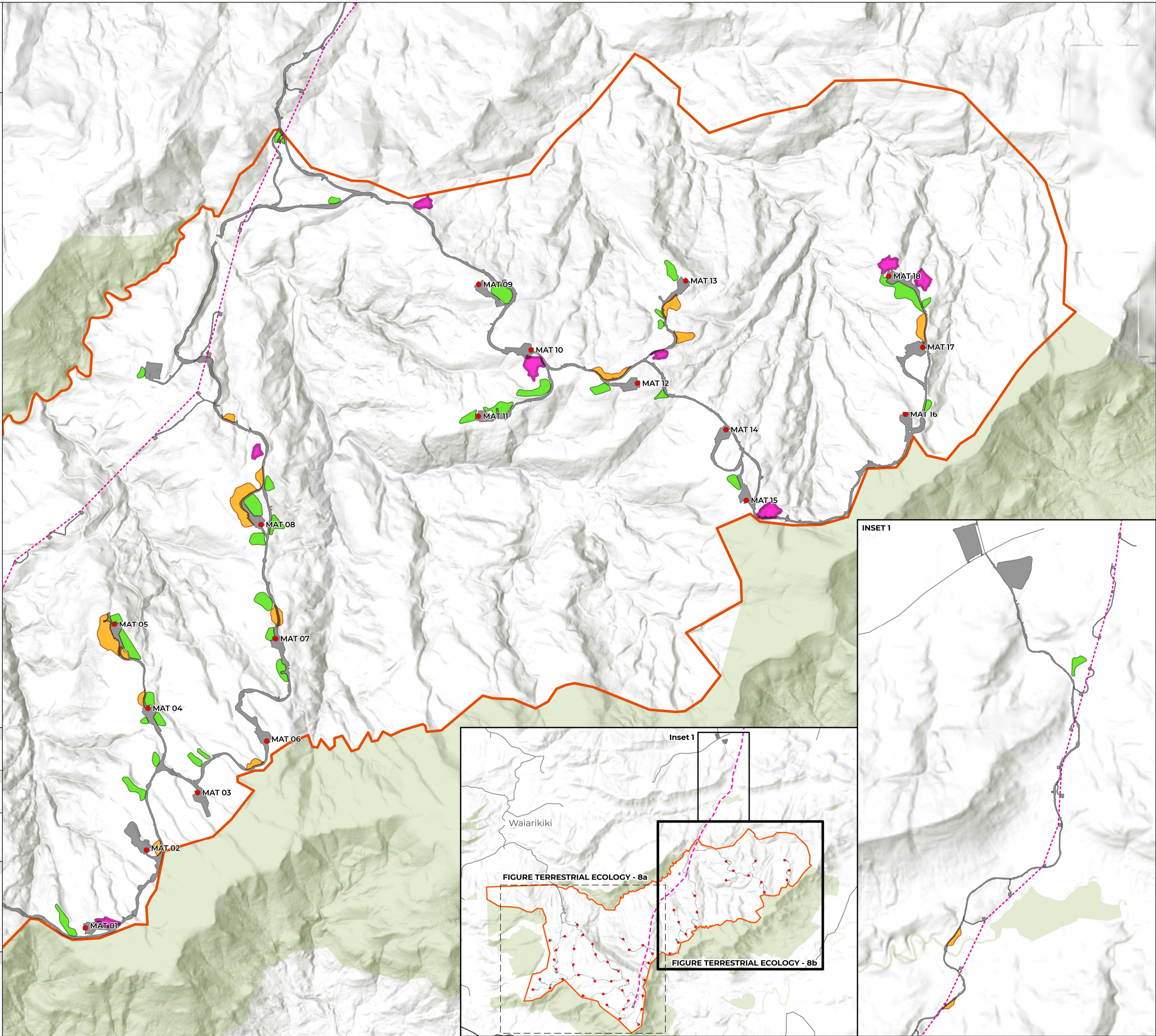


Indicative Surplus Fill Disposal Sites by Riley

TITLE

FIGURE TERRESTRIAL ECOLOGY - 8b

INDICATIVE SURPLUS FILL DISPOSAL SITES
WIND FARM SITE - WEST





LEGEND

Wind Farm

- Wind Turbines
- Transmission Line Route
- Wind Farm Site
- Civil Works Design

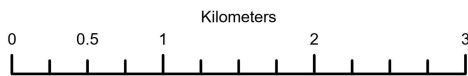
Enhancement & Restoration Areas

- Jedburgh Station Pest Control Area (c.1,400 ha, unfenced)
- Jedburgh Plateau (c. 530 ha, unfenced)
- Jedburgh Station Ecological Enhancement Area (c. 245 ha, fenced)
- Copper Tussock Enhancement and Skink Protection Area (c. 8 ha, fenced)
- Plateau Fauna Enhancement Area (c. 55 ha, unfenced)

MAP SCALE



Scale: 1:50,000



PRINT DATE

20/08/2025

VERSION

1.0

CREDITS:

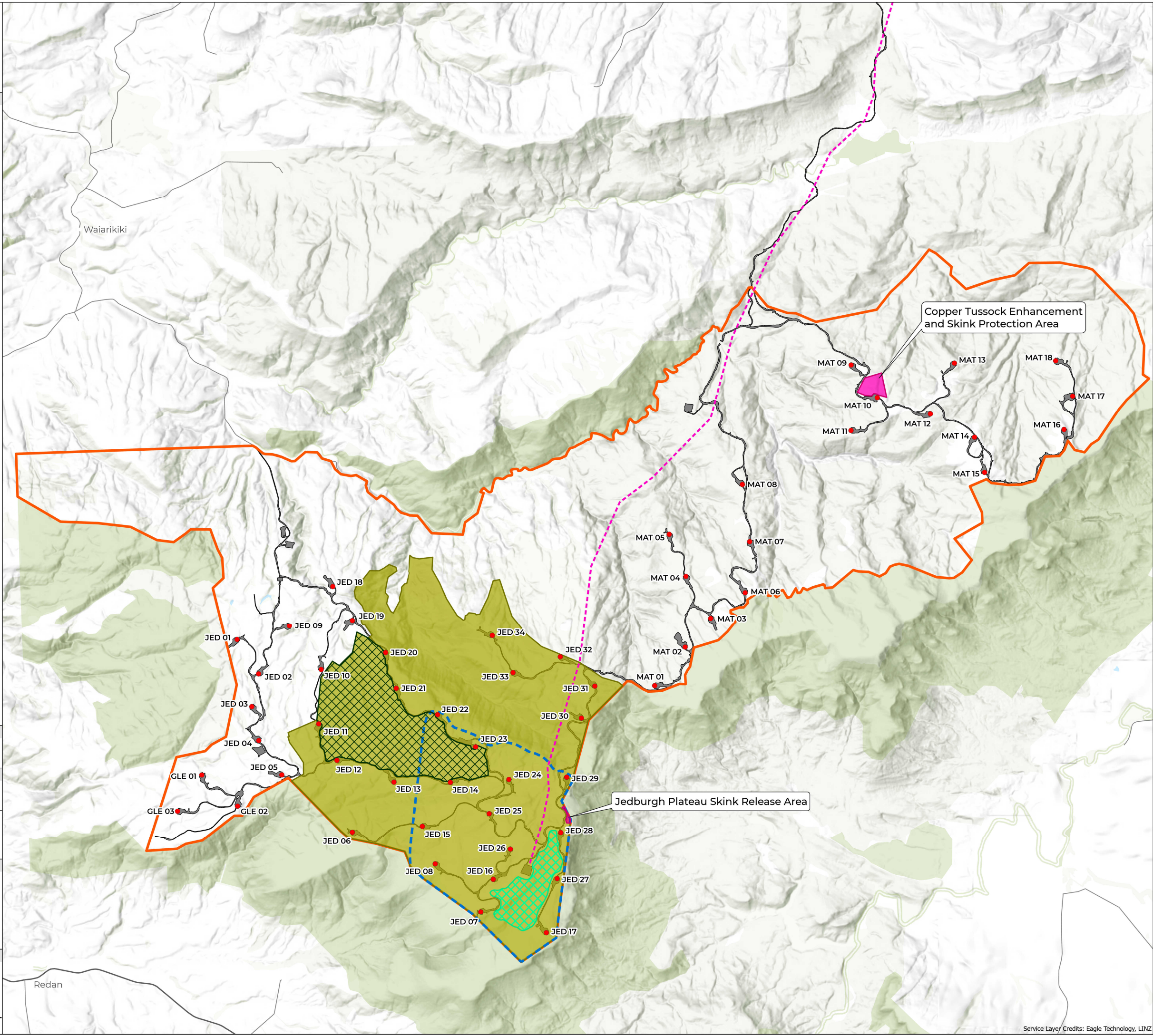


Wildlands

Ecological data provided by Wildlands Consultants

TITLE

FIGURE TERRESTRIAL ECOLOGY - 9a
OFFSETTING AND COMPENSATION MEASURES
ON THE WIND FARM SITE PROPOSED TO
ADDRESS THE RESIDUAL EFFECTS OF THE PROJECT





LEGEND

Wind Farm

- Wind Turbines
- Transmission Line Route
- Wind Farm Site
- Civil Works Design

Enhancement & Restoration Areas

- Jedburgh Station Pest Control Area (c.1,400 ha, unfenced)
- Jedburgh Plateau (c. 530 ha, unfenced)
- Jedburgh Station Ecological Enhancement Area (c. 245 ha, fenced)
- Copper Tussock Enhancement and Skink Protection Area (c. 8 ha, fenced)
- Plateau Fauna Enhancement Area (c. 55 ha, unfenced)
- Davidson Road Wetland Restoration Site (c. 15 ha, fenced)
- Beresford Range Pest Control Area (c. 10,000 ha, unfenced)

MAP SCALE



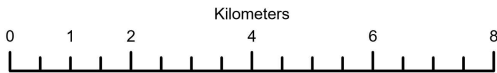
Scale: 1:125,000

PRINT DATE

20/08/2025

VERSION

1.0



CREDITS:

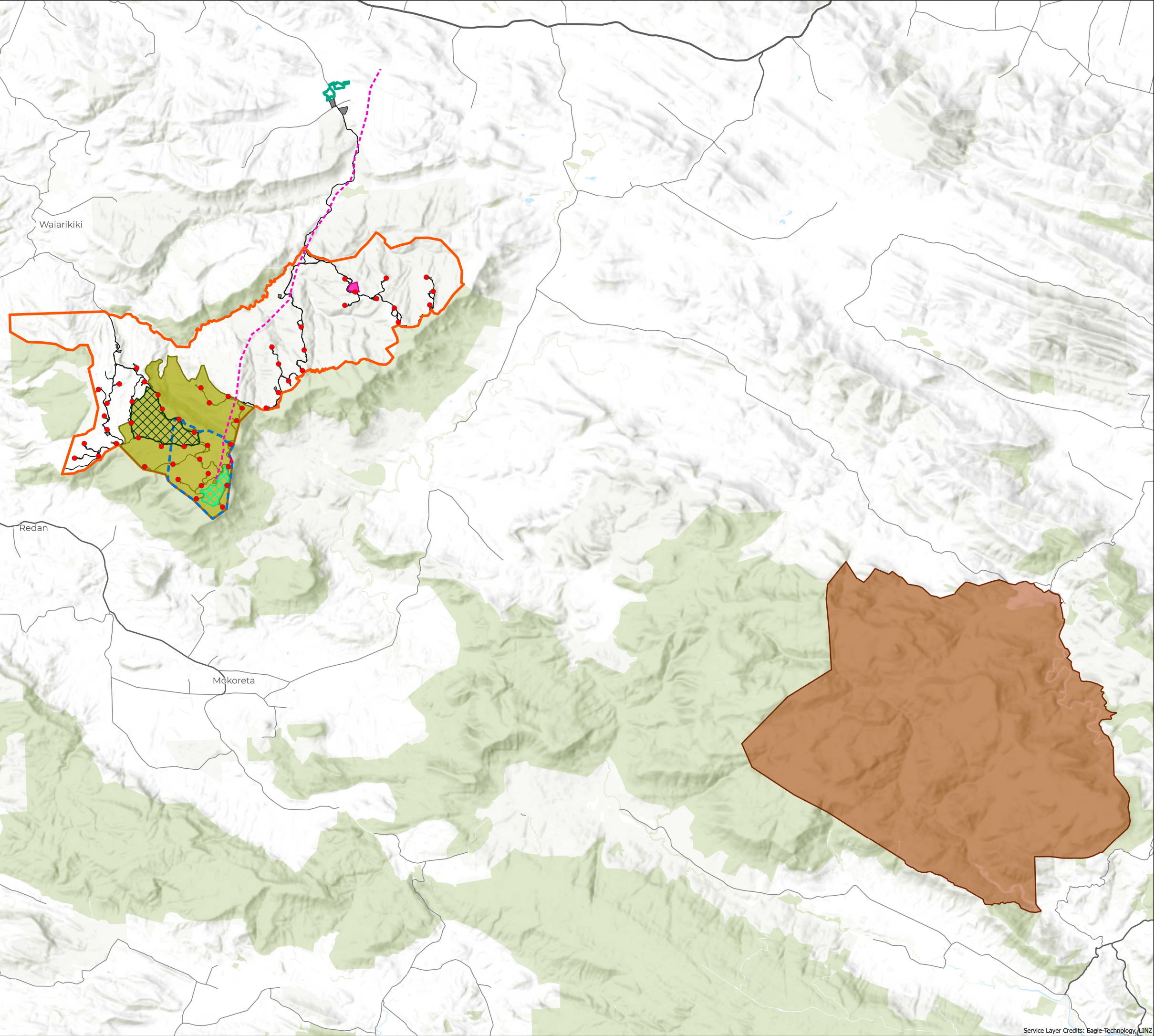


Wildlands

Ecological data provided by Wildlands Consultants

TITLE

FIGURE TERRESTRIAL ECOLOGY - 9b
WIDER OFFSETTING AND COMPENSATION
MEASURES PROPOSED TO ADDRESS THE
RESIDUAL EFFECTS OF THE PROJECT



Service Layer Credits: Eagle Technology, LINZ



LEGEND

Wind Farm

- Temporary Laydown Areas
- Contact Energy Property

Enhancement & Restoration Areas

- Davidson Road Wetland Restoration and Covenant Area (c. 15 ha, fenced)
- Davidson Road Wetland Restoration Areas (c. 5.1 ha)
- Davidson Road Terrestrial Vegetation Planting Areas (c. 1.0 ha)
- Davidson Road Wetland Enhancement Areas (c. 6.7 ha)

Note
All areas shown above are subject to further discussion with Gore District Council about the paper road through the Contact Energy property.

| | |
|--------------------|------------|
| MAP SCALE | PRINT DATE |
| Scale: 1:5,000 | 20/08/2025 |
| | VERSION |
| | 1.0 |


CREDITS:



TITLE

FIGURE TERRESTRIAL ECOLOGY - 9c
DAVIDSON ROAD WETLAND RESTORATION SITE AND PROPOSED COVENANT





LEGEND


- Wind Turbines
- ▬ Civil Works Design
- ▭ Wind Farm Site
- Wind Farm Properties
 - ▭ Glencoe Station
 - ▭ Matariki (Venlaw) Forests
 - ▭ Jedburgh Station
- Transmission Line Properties
 - ▭ Port Blakely

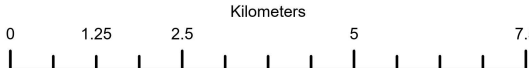
ABM Locations - Survey 1
(29 December 2022 – 12 January 2023)

ABM Locations - Survey 2
(30 January – 14 February 2023)

ABM Locations - Survey 3
(7 – 23 March 2023)

ABM Locations - Survey 4
(16 June - 24 August 2023)

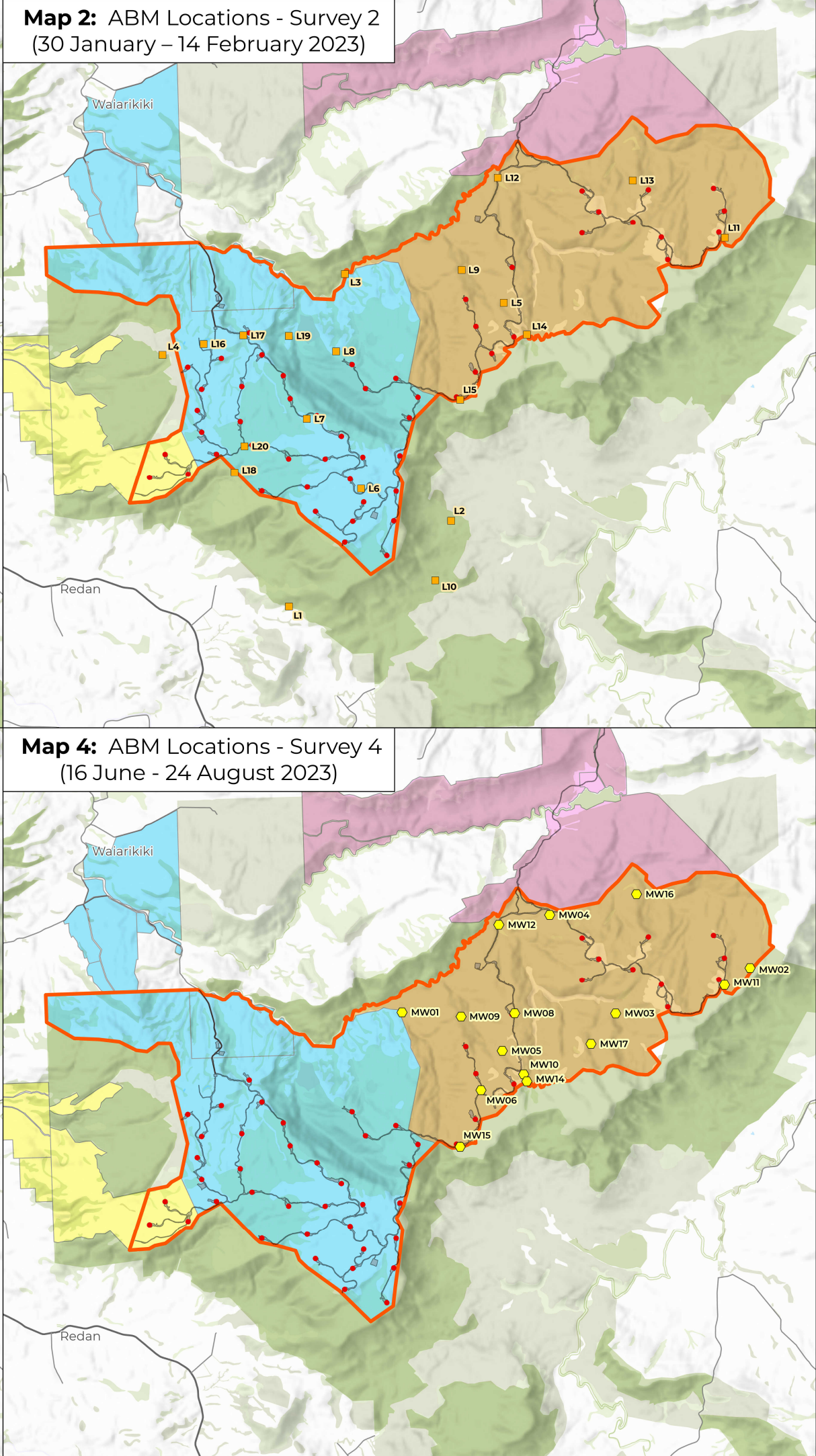
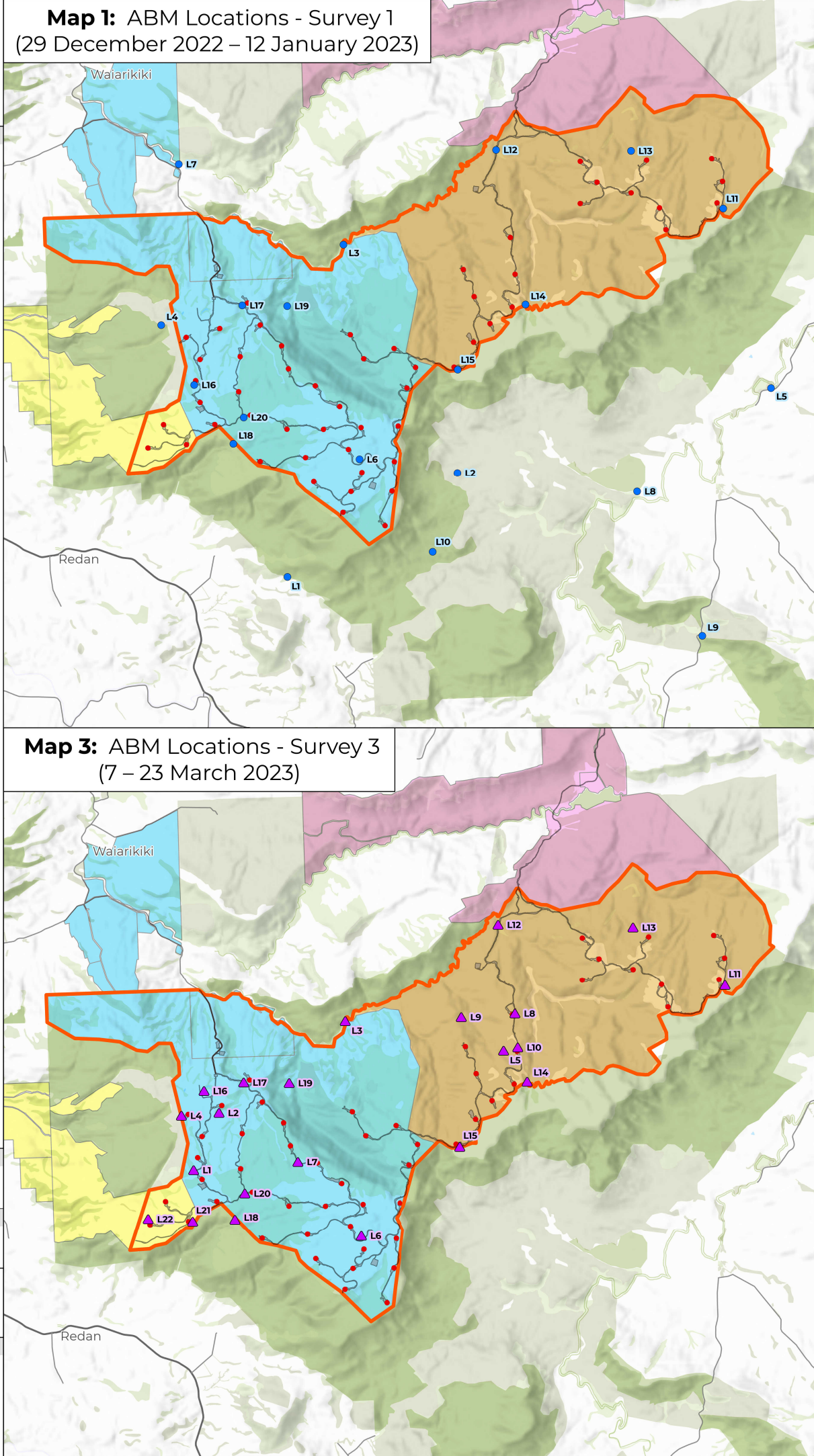
| | |
|---|------------|
| MAP SCALE | PRINT DATE |
|  <p>Scale: 1:110,000</p> | 24/06/2025 |
| | VERSION |
| | 1.0 |



TITLE

FIGURE LONG-TAILED BATS - 1

ACOUSTIC BAT MONITOR (ABM) LOCATIONS FOR BAT SURVEYS 1, 2, 3 & 4





LEGEND

- Wind Turbines
- Civil Works Design
- ▭ Wind Farm Site
- Wind Farm Properties
 - Glencoe Station
 - Matariki (Venlaw) Forests
 - Jedburgh Station
- Transmission Line Properties
 - Port Blakely
- DoC Conservation Areas
 - Conservation Park (s.19)
 - Stewardship Area (s.25)
- + ABM Locations - Surveys 5 to 8
Summer and Autumn (2023/24)

MAP SCALE



Scale: 1:50,000

PRINT DATE

24/06/2025

VERSION

1.0

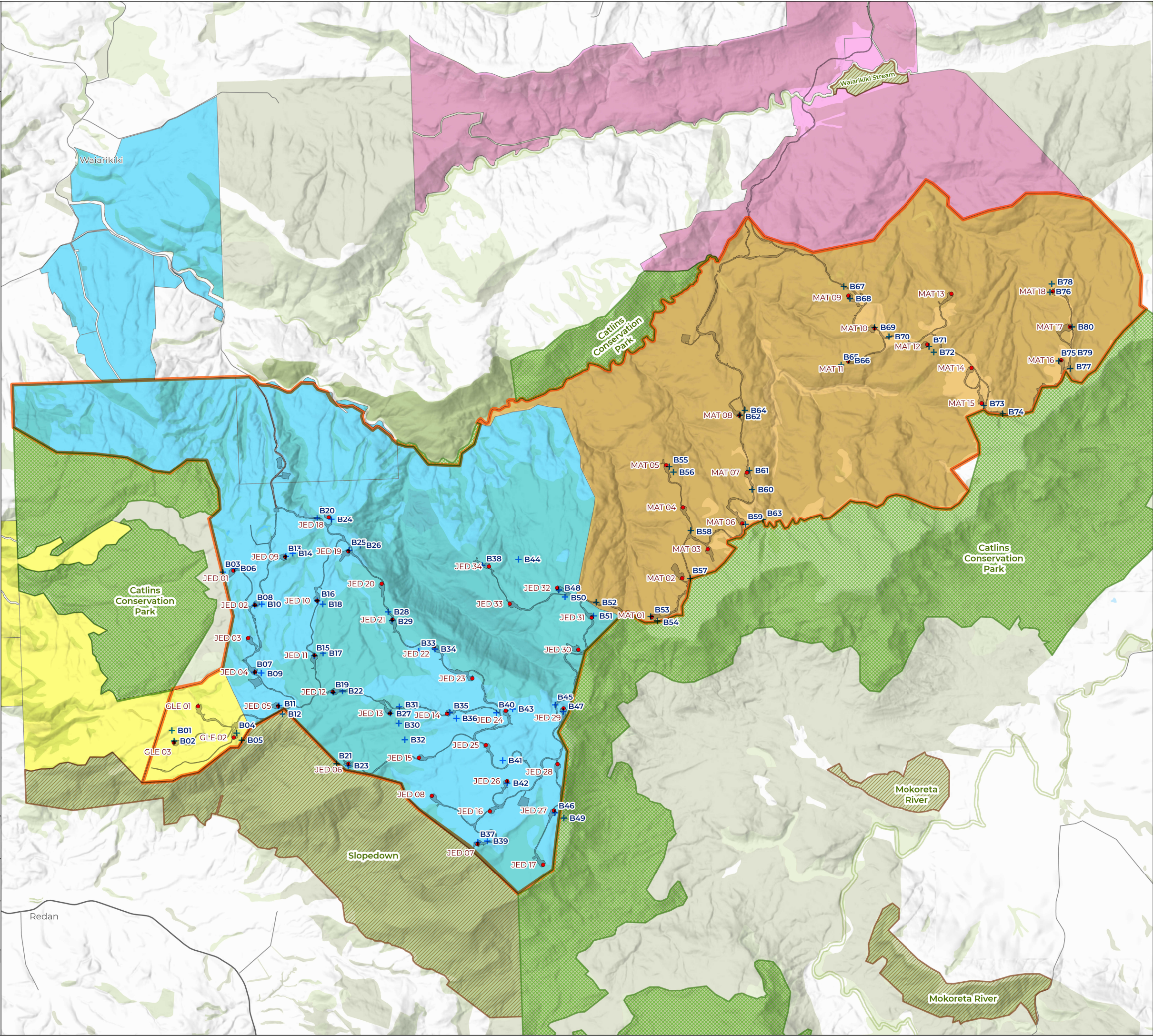
Kilometers




TITLE

FIGURE LONG-TAILED BATS - 2

ACOUSTIC BAT MONITOR (ABM) LOCATIONS
FOR BAT SURVEYS 5, 6, 7 & 8





LEGEND

- Wind Turbines
- Civil Works Design
- Wind Farm Site
- Wind Farm Properties
 - Glencoe Station
 - Matariki (Venlaw) Forests
 - Jedburgh Station
- Transmission Line Properties
 - Port Blakely

Survey 1 (29 December 2022 – 12 January 2023)

- Bats Not Detected
- Bat Passes

Survey 2 (30 January – 14 February 2023)

- Bats Not Detected
- Bat Passes

Survey 3 (07 – 23 March 2023)

- Bats Not Detected
- Bat Passes


Survey 4 (16 June - 24 August 2023)

- Bats Not Detected
- Bat Passes

Note on Total Bat Passes

Number on the point symbol denotes the total number of bat passes recorded at that ABM

MAP SCALE



N

Scale: 1:110,000

0 1.25 2.5 5 7.5

Kilometers

PRINT DATE

24/06/2025

VERSION

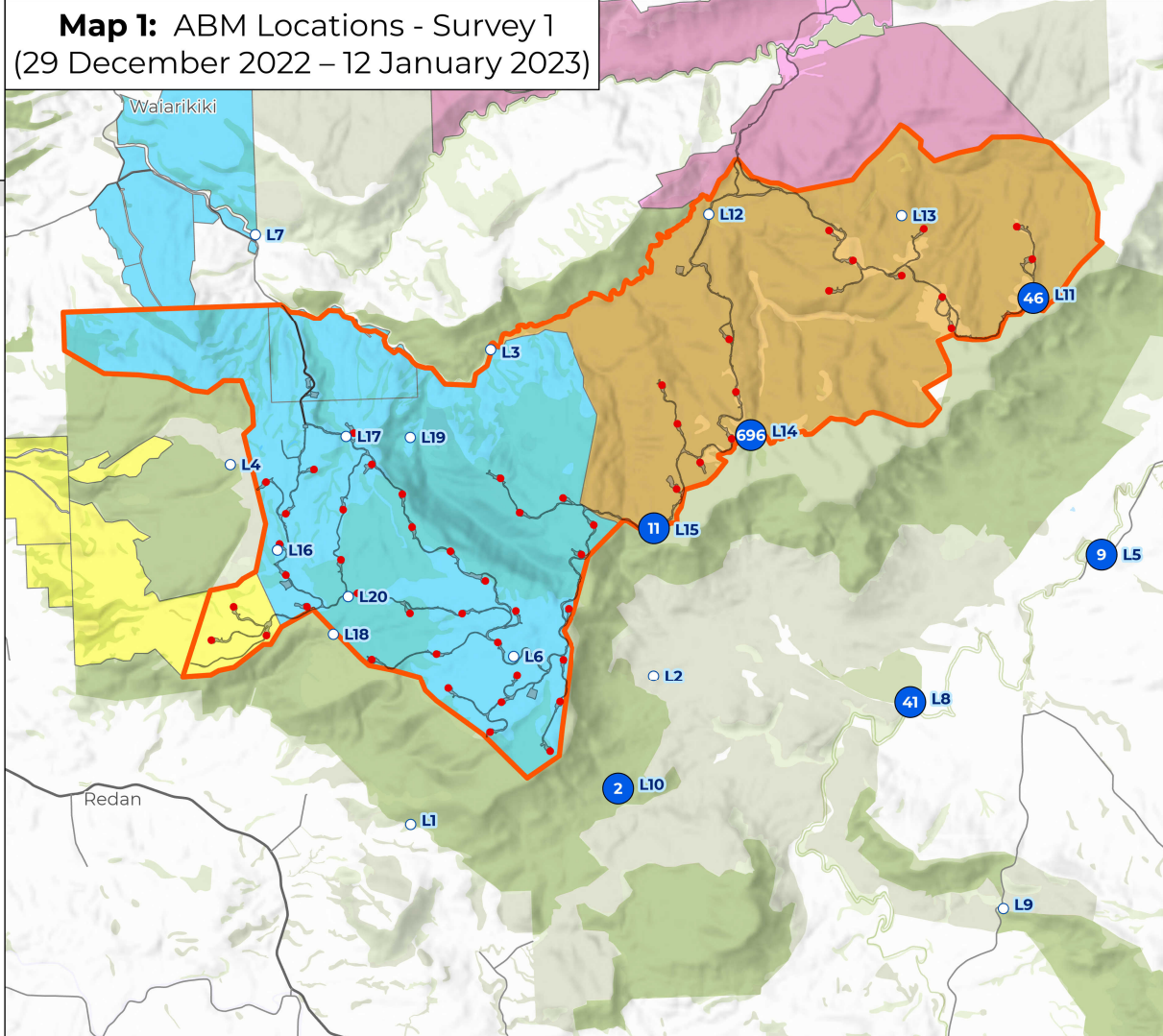
1.0

TITLE

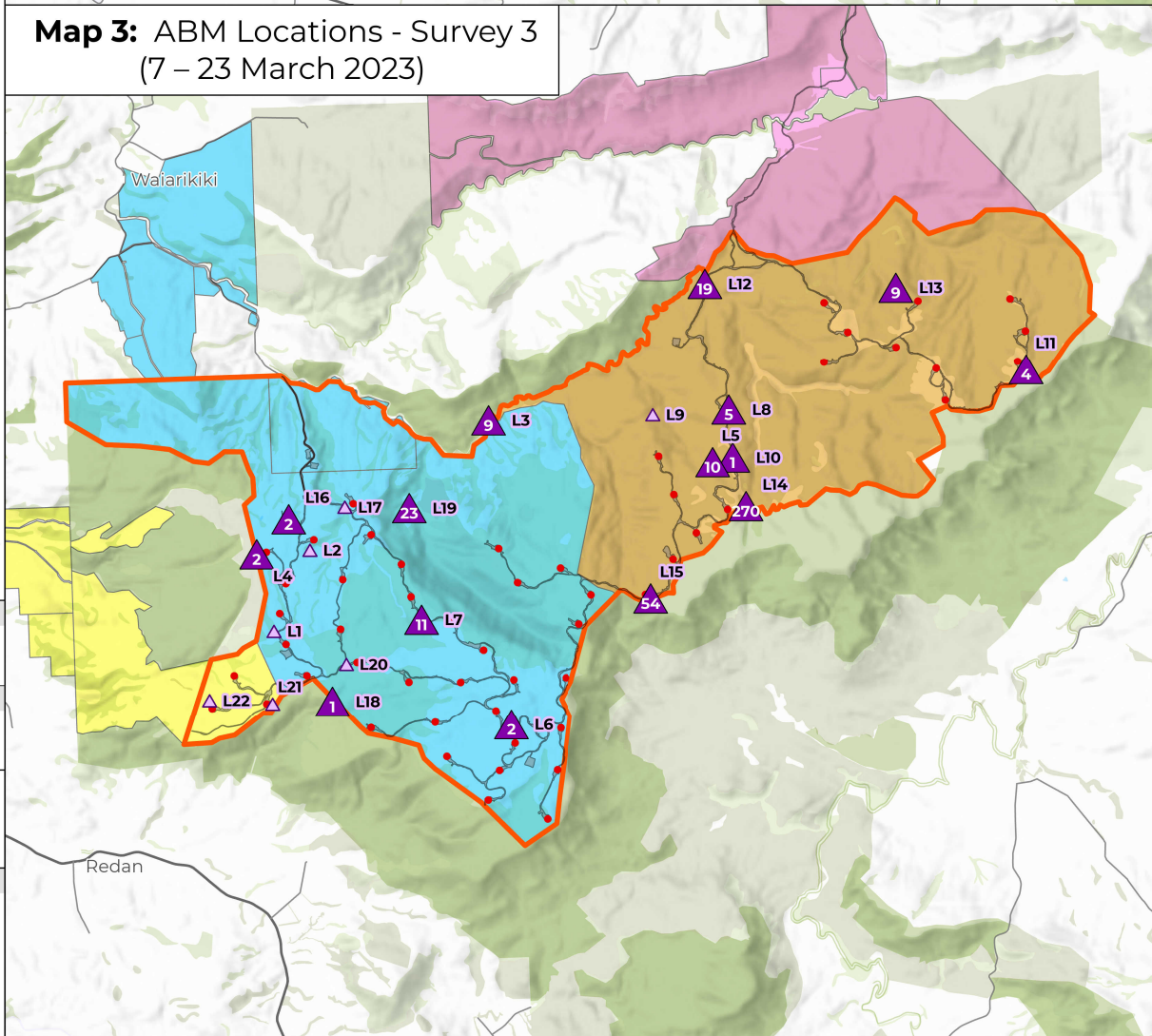
FIGURE LONG-TAILED BATS - 3

TOTAL BAT PASSES AT ABM LOCATIONS FOR BAT SURVEYS 1, 2 3 & 4

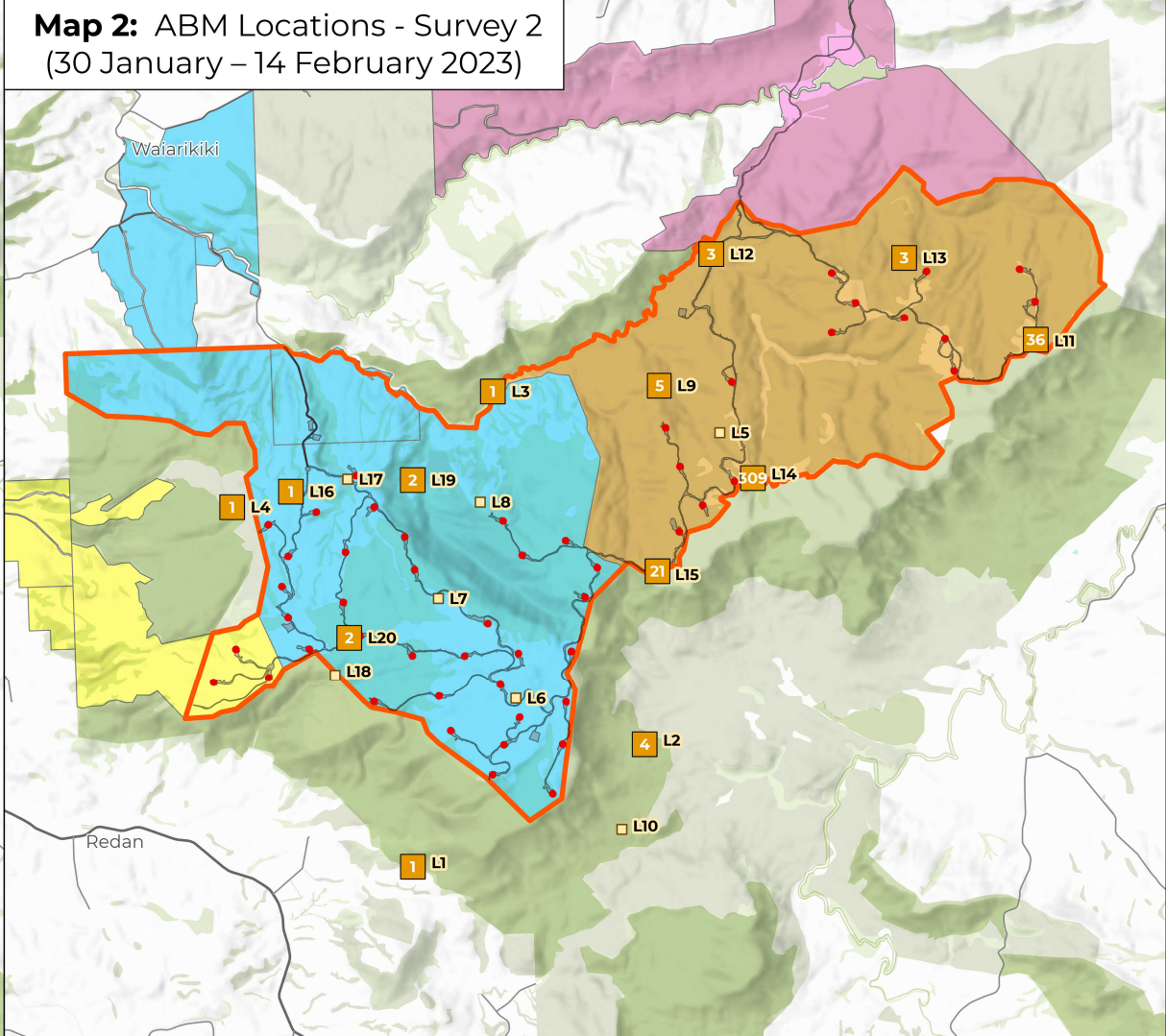
Map 1: ABM Locations - Survey 1
(29 December 2022 – 12 January 2023)



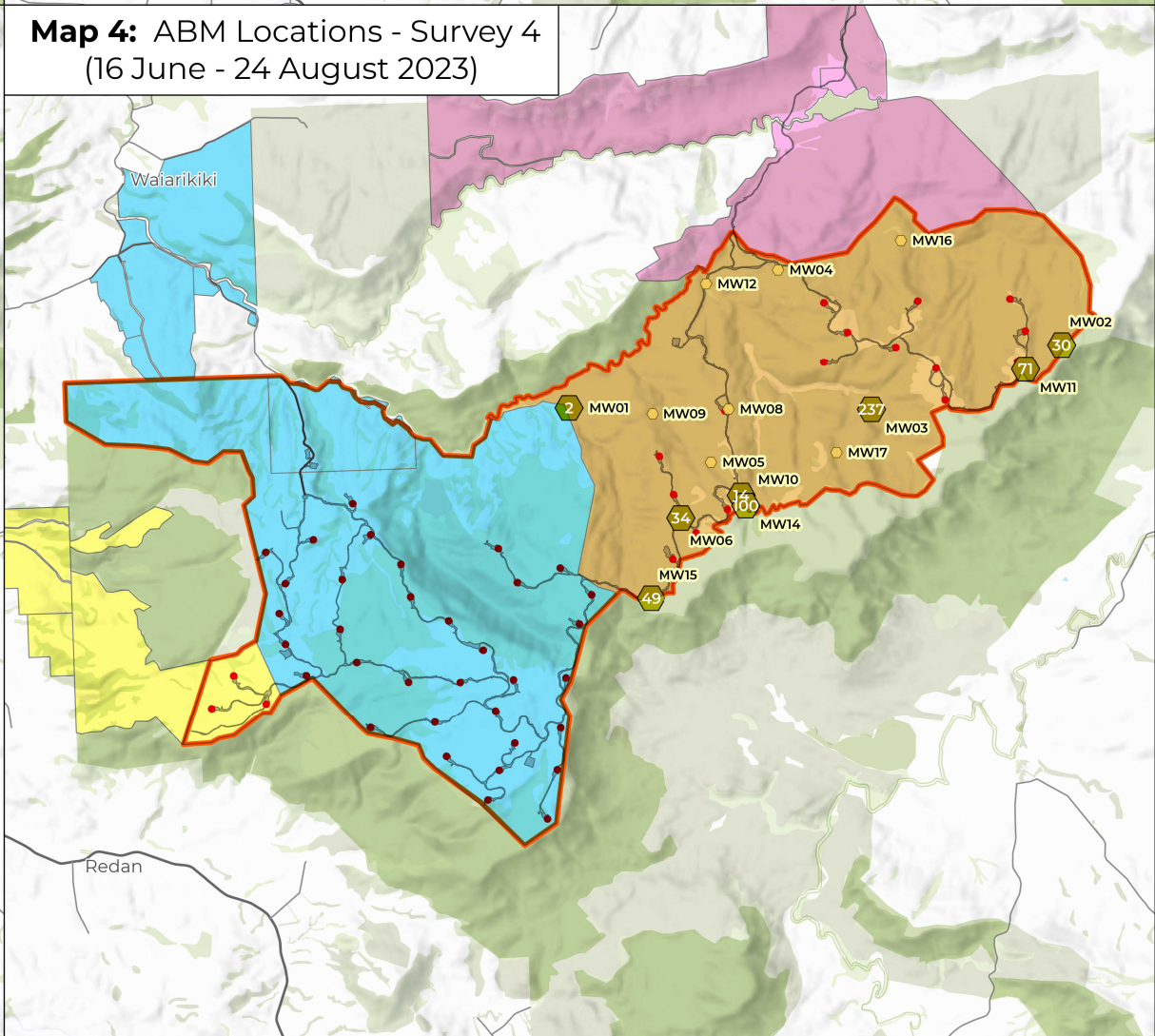
Map 3: ABM Locations - Survey 3
(7 – 23 March 2023)



Map 2: ABM Locations - Survey 2
(30 January – 14 February 2023)



Map 4: ABM Locations - Survey 4
(16 June - 24 August 2023)



Service Layer Credits: Eagle Technology, LINZ

39



LEGEND

- Wind Turbines
- Civil Works Design
- ▭ Wind Farm Site
- Wind Farm Properties
 - Glencoe Station
 - Matariki (Venlaw) Forests
 - Jedburgh Station
- Transmission Line Properties
 - Port Blakely
- DoC Conservation Areas
 - Conservation Park (s.19)
 - Stewardship Area (s.25)

Survey 1 (29 December 2022 – 12 January 2023)

● More than 20 Bat Passes

Survey 2 (30 January – 14 February 2023)

■ More than 20 Bat Passes

Survey 3 (07 – 23 March 2023)

▲ More than 20 Bat Passes

MAP SCALE



Scale: 1:50,000

PRINT DATE

24/06/2025

VERSION

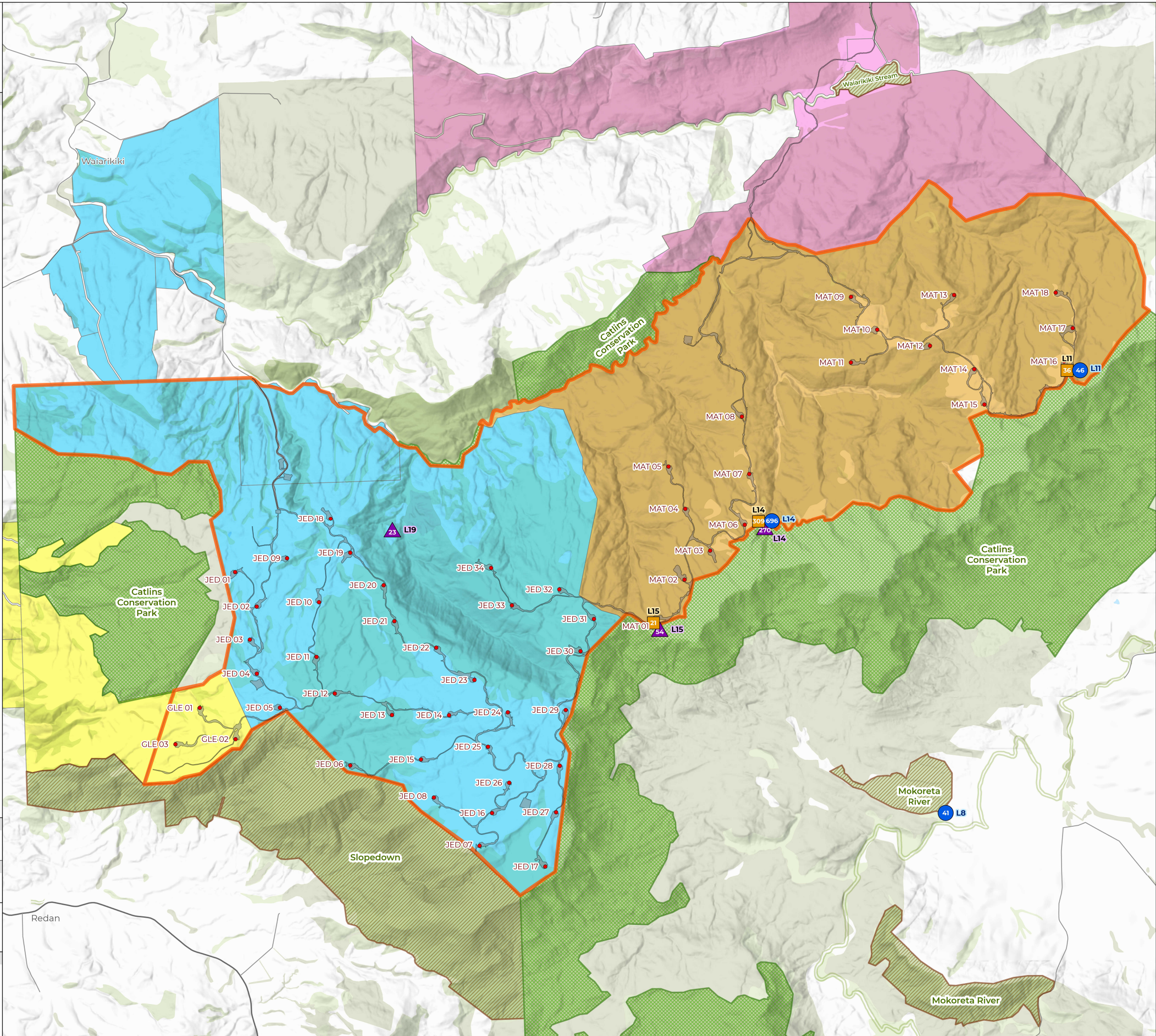
1.0

Kilometers



TITLE

FIGURE LONG-TAILED BATS - 4
ABMS WHICH RECORDED MORE THAN
20 BAT PASSES PER SURVEY DURING
SURVEYS 1 – 3





LEGEND

- Wind Turbines
- Civil Works Design
- ▭ Wind Farm Site
- Wind Farm Properties
 - Glencoe Station
 - Matariki (Venlaw) Forests
 - Jedburgh Station
- Transmission Line Properties
 - Port Blakely
- DoC Conservation Areas
 - Conservation Park (s.19)
 - Stewardship Area (s.25)

Surveys 5 to 8 (Sumer & Autum 2023/24)

- + Bats Not Detected
- Bat Passes

Note on Total Bat Passes

Number on the point symbol denotes the total number of bat passes recorded at that ABM

MAP SCALE



Scale: 1:50,000

PRINT DATE

24/06/2025

VERSION

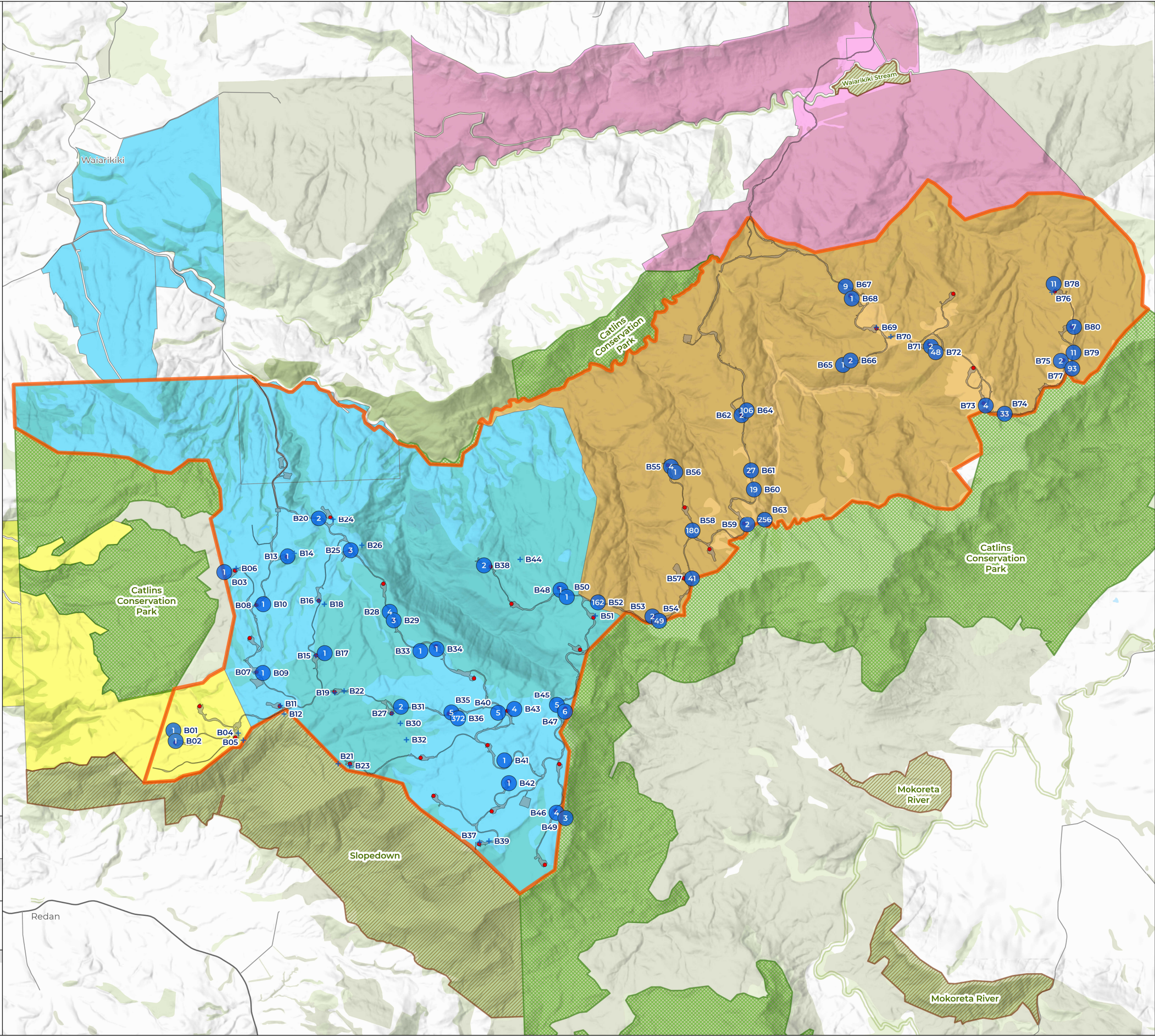
1.0

Kilometers



TITLE

FIGURE LONG-TAILED BATS - 5
TOTAL BAT PASSES AT ABM LOCATIONS
FOR BAT SURVEYS 5 TO 8



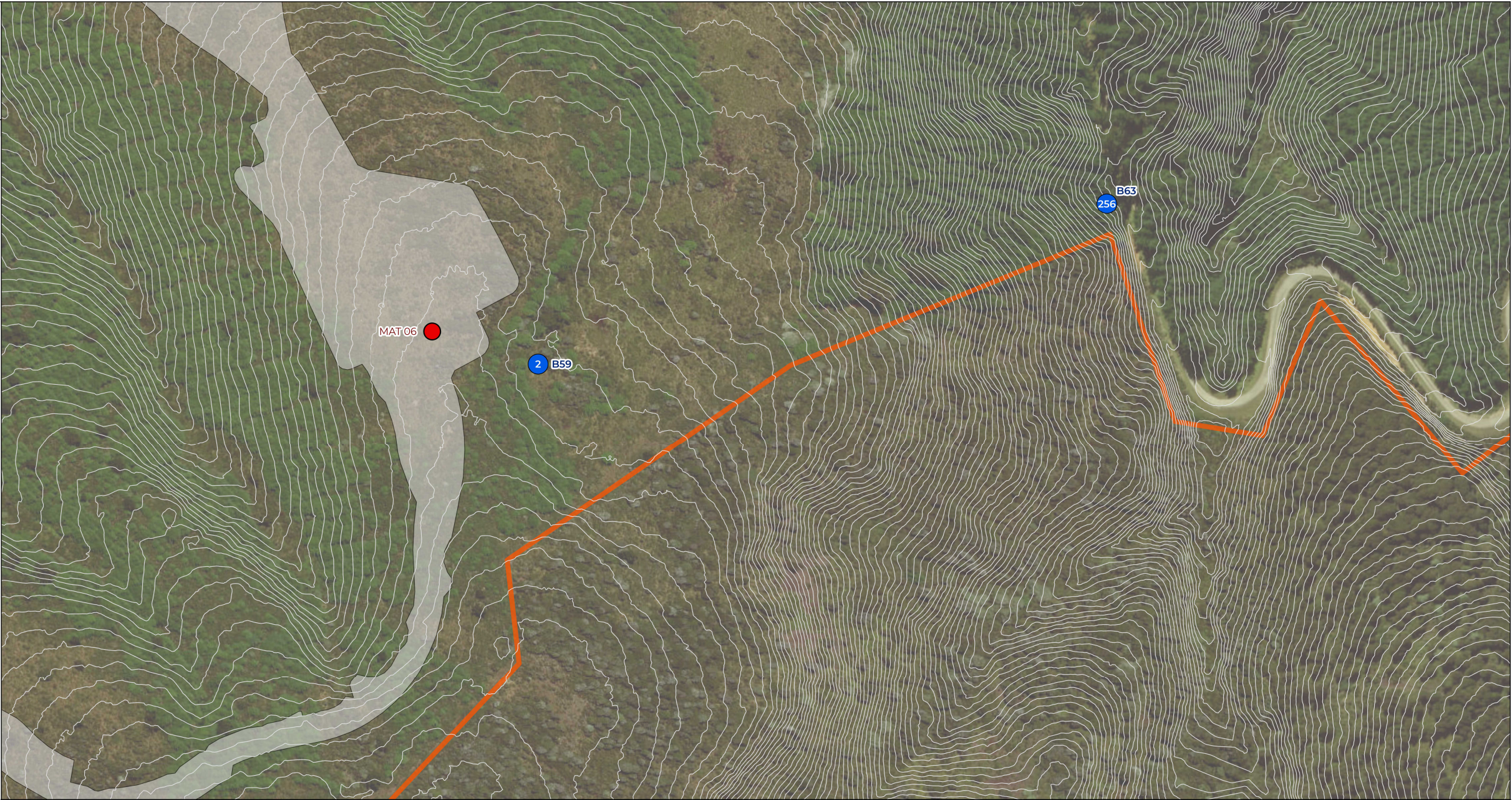


LEGEND

- Wind Turbines
- 1m Contours
- Civil Works Design
- Wind Farm Site

Surveys 5 to 8 (Sumer & Autum 2023/24)

- Bat Passes



Note on distance between B59 and B63

Horizontal Distance = 250m
Vertical Distance = 61m

Note on Total Bat Passes

Number on the point symbol denotes the total number of bat passes recorded at that ABM

MAP SCALE



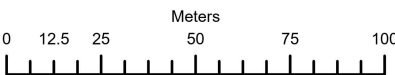
Scale: 1:2,000

PRINT DATE

24/06/2025

VERSION

1.0



TITLE

FIGURE LONG-TAILED BATS - 6

LOCATION AND PROFILE BETWEEN
ABM SURVEY SITES B59 AND B63

