

- Legend**
- Ex drains retained
 - Exceedence Outlet and Rip Rap
 - Stormwater Management/Treatment Area
 - Wetlands Retained
 - Wetlands buffer
 - Stormwater Conveyance
 - Proposed SW catchment boundaries (Indicative)
- Area Classification**
- 70% Imp
 - Treated / Attenuated or Greenfield

- Notes:**
- Layout and levels are indicative and subject to refinement through detailed modelling.
 - 10% AEP conveyed via primary network; 1% AEP exceedance routed along road corridors.
 - Water-quality discharges to wetlands to be diffuse (refer Typology Plans 480 & 481).
 - Treatment devices to be located outside the modelled 10% AEP extent (subject to detailed design).
 - Proprietary devices may be used where groundwater levels constrain infiltration, consistent with the SMP.
 - Catchment-specific calculations are provided in the Landlink Stormwater Management Plan and appendices.

Stormwater Catchment and Features Plan

Sheet 9 of 14

Waikanae North Developments Ltd

Waikanae North
Peka Peka, Kapiti Coast

© Landlink Limited 2025



1 Ngaio Road, Waikanae 5036 + contactus@Landlink.nz

STAGE	ALL
REVISION	C
REVISION DETAILS	Issued For Consent

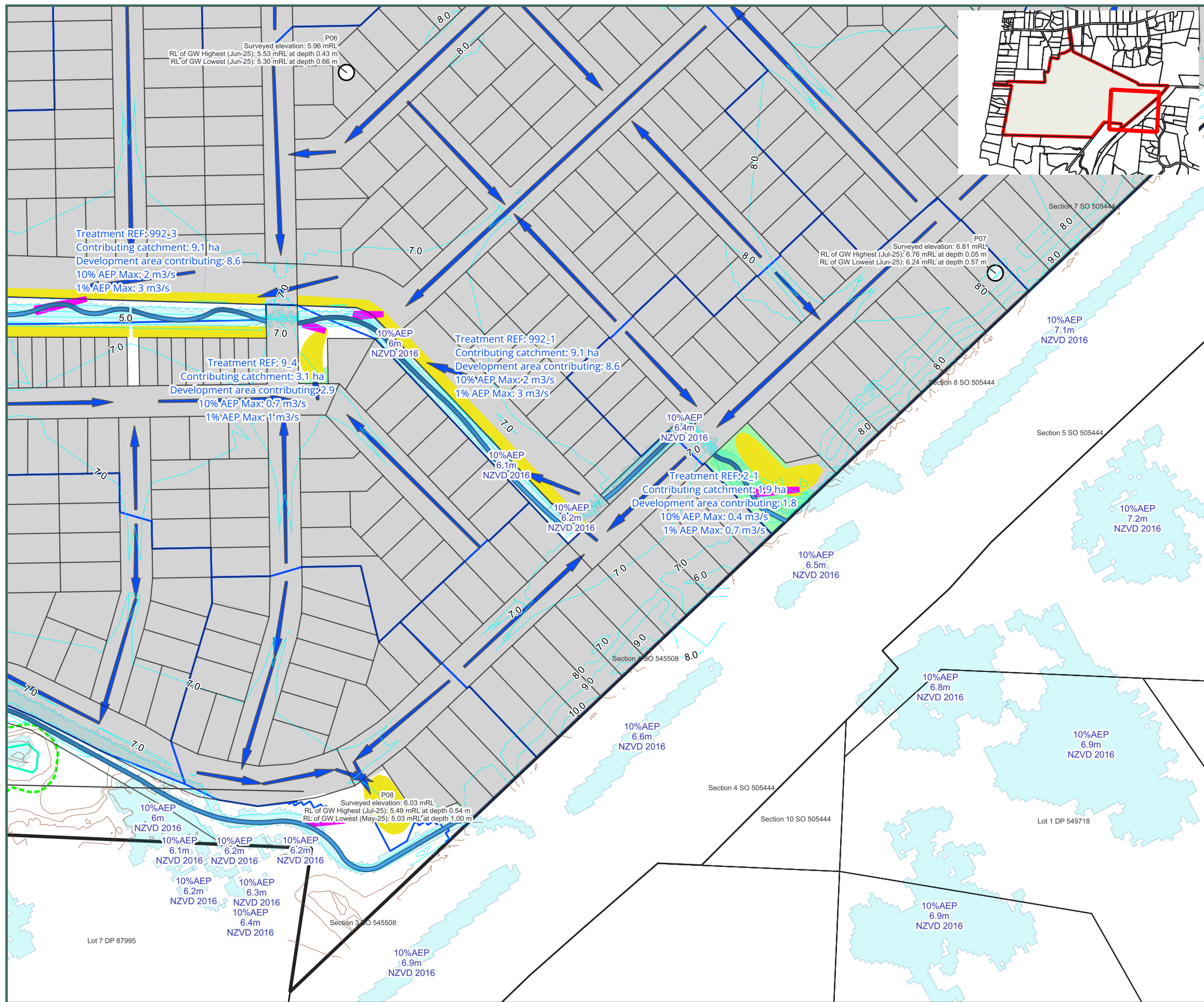
DESIGNED BY	JJH
DRAWN BY	JJH
APPROVED BY	PT

DATE 2026-03-13

SCALE Refer Scale Bar

2911-ALL-SW-418

This drawing contains data from other sources and has been prepared for a specific site and event. Landlink Limited does not accept any liability for its accuracy, content or unauthorised use.



0 20 40 60 80 100 m

Legend

- █ Exceedence Outlet and Rip Rap
- █ Stormwater Management/Treatment Area
- █ Wetlands Retained
- █ Wetlands buffer
- █ Stormwater Conveyance
- █ Proposed SW catchment boundaries (Indicative)

Area Classification

- █ 70% Imp
- █ Treated / Attenuated or Greenfield

- Notes:**
1. Layout and levels are indicative and subject to refinement through detailed modelling.
 2. 10% AEP conveyed via primary network; 1% AEP exceedance routed along road corridors.
 3. Water-quality discharges to wetlands to be diffuse (refer Typology Plans 480 & 481).
 4. Treatment devices to be located outside the modelled 10% AEP extent (subject to detailed design).
 5. Proprietary devices may be used where groundwater levels constrain infiltration, consistent with the SMP.
 6. Catchment-specific calculations are provided in the Landlink Stormwater Management Plan and appendices.

Stormwater Catchment and Features Plan
Sheet 10 of 14

Waikanae North Developments Ltd

Waikanae North
Peka Peka, Kapiti Coast

© Landlink Limited 2025



1 Ngaio Road, Waikanae 5036 + contactus@Landlink.nz

STAGE	ALL
REVISION	C
REVISION DETAILS	Issued For Consent

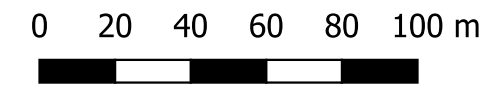
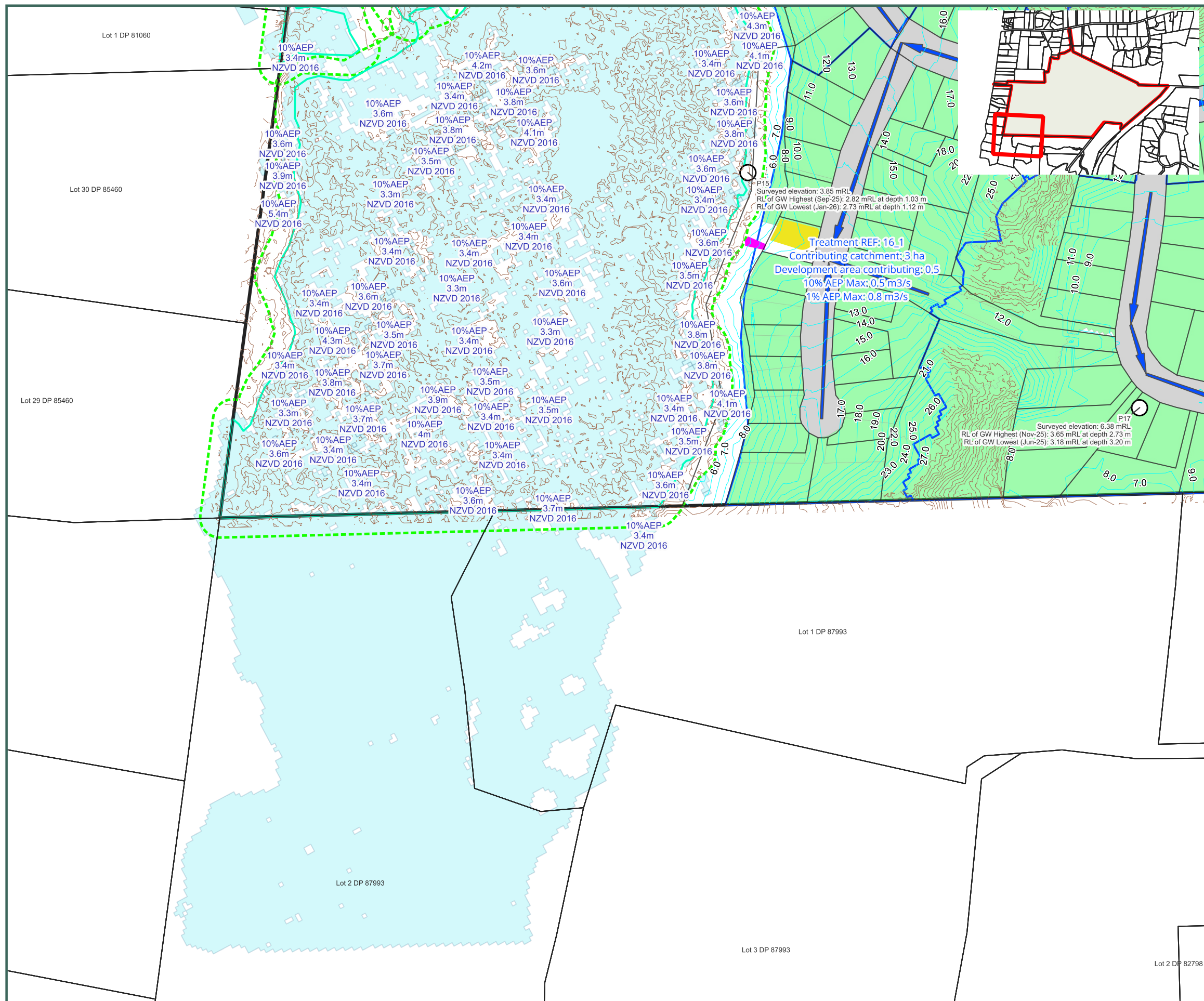
DESIGNED BY	JJH
DRAWN BY	JJH
APPROVED BY	PT

DATE 2026-03-13

SCALE Refer Scale Bar

2911-ALL-SW-419

This drawing contains data from other sources and has been prepared for a specific site and event. Landlink Limited does not accept any liability for its accuracy, content or unauthorised use.



Legend

- █ Exceedence Outlet and Rip Rap
 - Stormwater Management/Treatment Area
 - Wetlands Retained
 - Wetlands buffer
 - ▬ Stormwater Conveyance
 - Proposed SW catchment boundaries (Indicative)
- Area Classification**
- 70% Imp
 - Treated / Attenuated or Greenfield

Notes:

1. Layout and levels are indicative and subject to refinement through detailed modelling.
2. 10% AEP conveyed via primary network; 1% AEP exceedance routed along road corridors.
3. Water-quality discharges to wetlands to be diffuse (refer Typology Plans 480 & 481).
4. Treatment devices to be located outside the modelled 10% AEP extent (subject to detailed design).
5. Proprietary devices may be used where groundwater levels constrain infiltration, consistent with the SMP.
6. Catchment-specific calculations are provided in the Landlink Stormwater Management Plan and appendices.

Stormwater Catchment and Features Plan

Sheet 11 of 14

Waikanae North Developments Ltd

Waikanae North

Peka Peka, Kapiti Coast

© Landlink Limited 2025



1 Ngaio Road, Waikanae 5036 + contactus@Landlink.nz

STAGE	ALL
REVISION	C
REVISION DETAILS	Issued For Consent

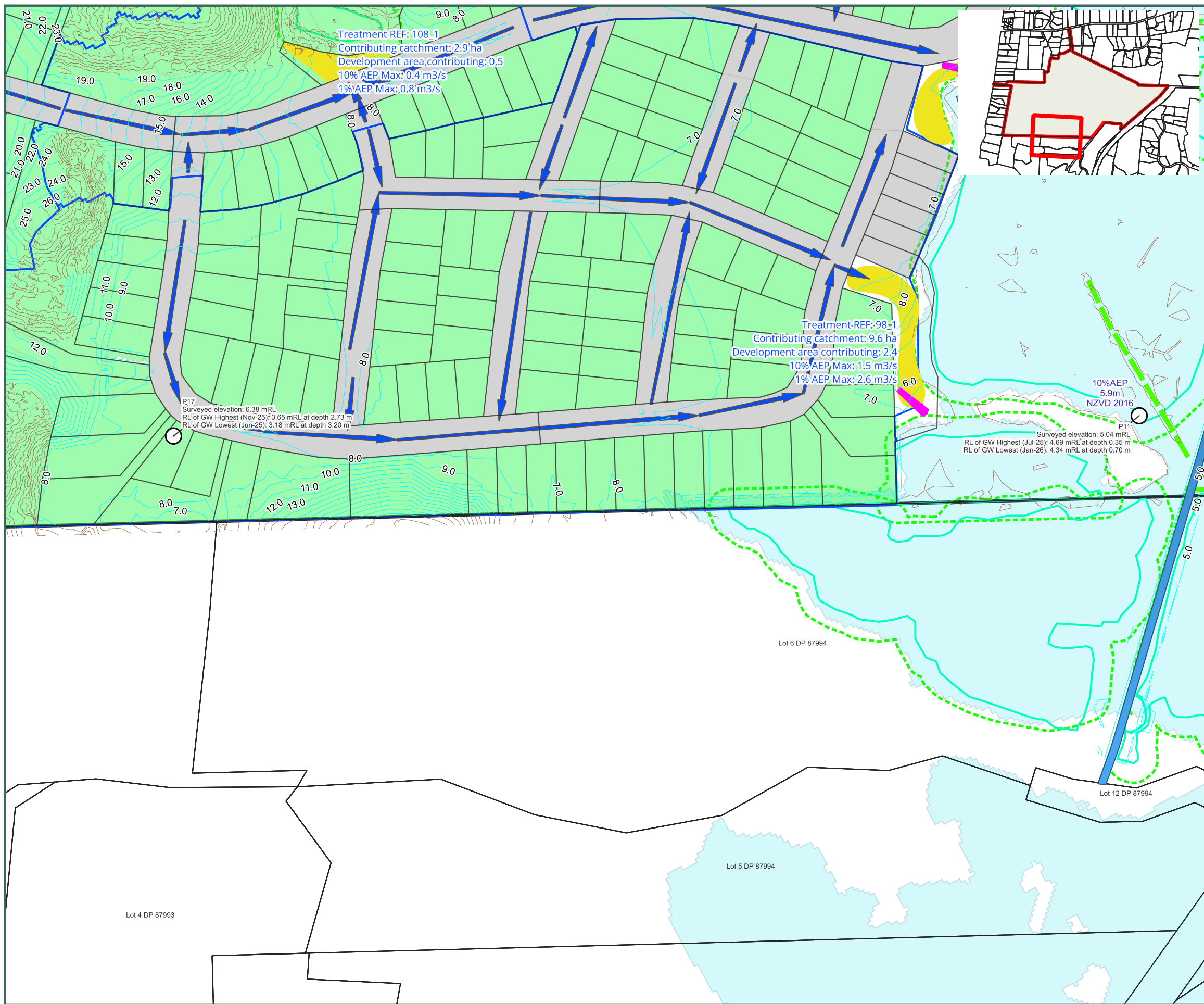
DESIGNED BY	JJH
DRAWN BY	JJH
APPROVED BY	PT

This drawing contains data from other sources and has been prepared for a specific site and event. Landlink Limited does not accept any liability for its accuracy, content or unauthorised use.

DATE 2026-03-13

SCALE Refer Scale Bar

2911-ALL-SW-420



0 20 40 60 80 100 m

Legend

- Ex drains retained
- Exceedence Outlet and Rip Rap
- Stormwater Management/Treatment Area
- Wetlands Retained
- Wetlands buffer
- Stormwater Conveyance
- Proposed SW catchment boundaries (Indicative)

Area Classification

- 70% Imp
- Treated / Attenuated or Greenfield

- Notes:**
- Layout and levels are indicative and subject to refinement through detailed modelling.
 - 10% AEP conveyed via primary network; 1% AEP exceedance routed along road corridors.
 - Water-quality discharges to wetlands to be diffuse (refer Typology Plans 480 & 481).
 - Treatment devices to be located outside the modelled 10% AEP extent (subject to detailed design).
 - Proprietary devices may be used where groundwater levels constrain infiltration, consistent with the SMP.
 - Catchment-specific calculations are provided in the Landlink Stormwater Management Plan and appendices.

Stormwater Catchment and Features Plan
 Sheet 12 of 14

Waikanae North Developments Ltd

Waikanae North
 Peka Peka, Kapiti Coast

© Landlink Limited 2025



1 Ngaio Road, Waikanae 5036 + contactus@Landlink.nz

STAGE	ALL
REVISION	C
REVISION DETAILS	Issued For Consent

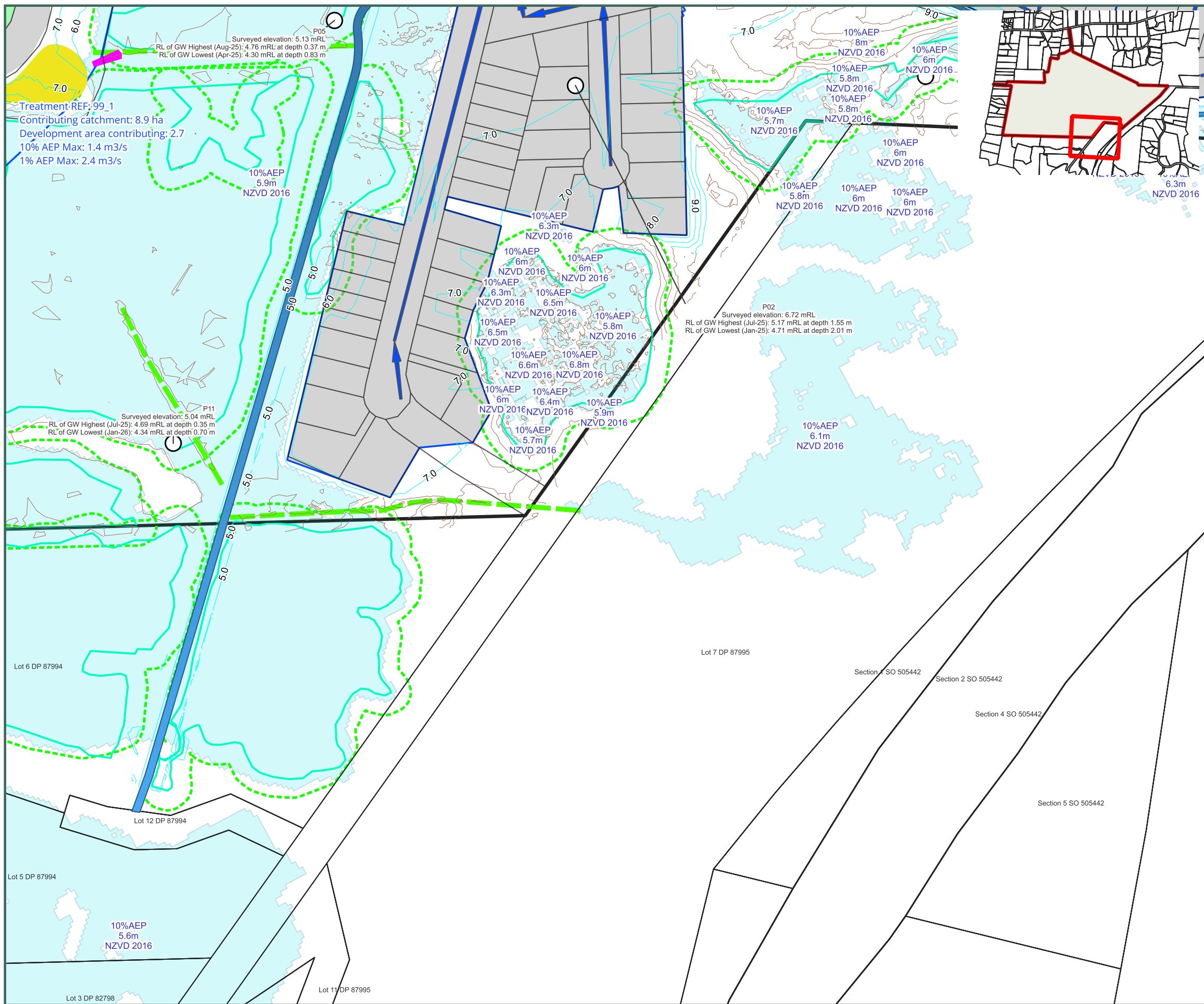
DESIGNED BY	JJH
DRAWN BY	JJH
APPROVED BY	PT

DATE 2026-03-13

SCALE Refer Scale Bar

2911-ALL-SW-421

This drawing contains data from other sources and has been prepared for a specific site and event. Landlink Limited does not accept any liability for its accuracy, content or unauthorised use.



0 20 40 60 80 100 m

Legend

- Ex drains retained
- Exceedence Outlet and Rip Rap
- Stormwater Management/Treatment Area
- Wetlands Retained
- Wetlands buffer
- Stormwater Conveyance
- Proposed SW catchment boundaries (Indicative)

Area Classification

- 70% Imp
- Treated / Attenuated or Greenfield

- Notes:**
1. Layout and levels are indicative and subject to refinement through detailed modelling.
 2. 10% AEP conveyed via primary network; 1% AEP exceedance routed along road corridors.
 3. Water-quality discharges to wetlands to be diffuse (refer Typology Plans 480 & 481).
 4. Treatment devices to be located outside the modelled 10% AEP extent (subject to detailed design).
 5. Proprietary devices may be used where groundwater levels constrain infiltration, consistent with the SMP.
 6. Catchment-specific calculations are provided in the Landlink Stormwater Management Plan and appendices.

Stormwater Catchment and Features Plan
Sheet 13 of 14

Waikanae North Developments Ltd

Waikanae North
Peka Peka, Kapiti Coast

© Landlink Limited 2025



1 Ngaio Road, Waikanae 5036 + contactus@Landlink.nz

STAGE	ALL
REVISION	C
REVISION DETAILS	Issued For Consent

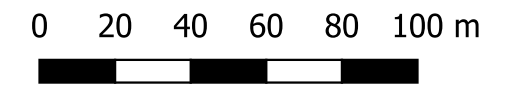
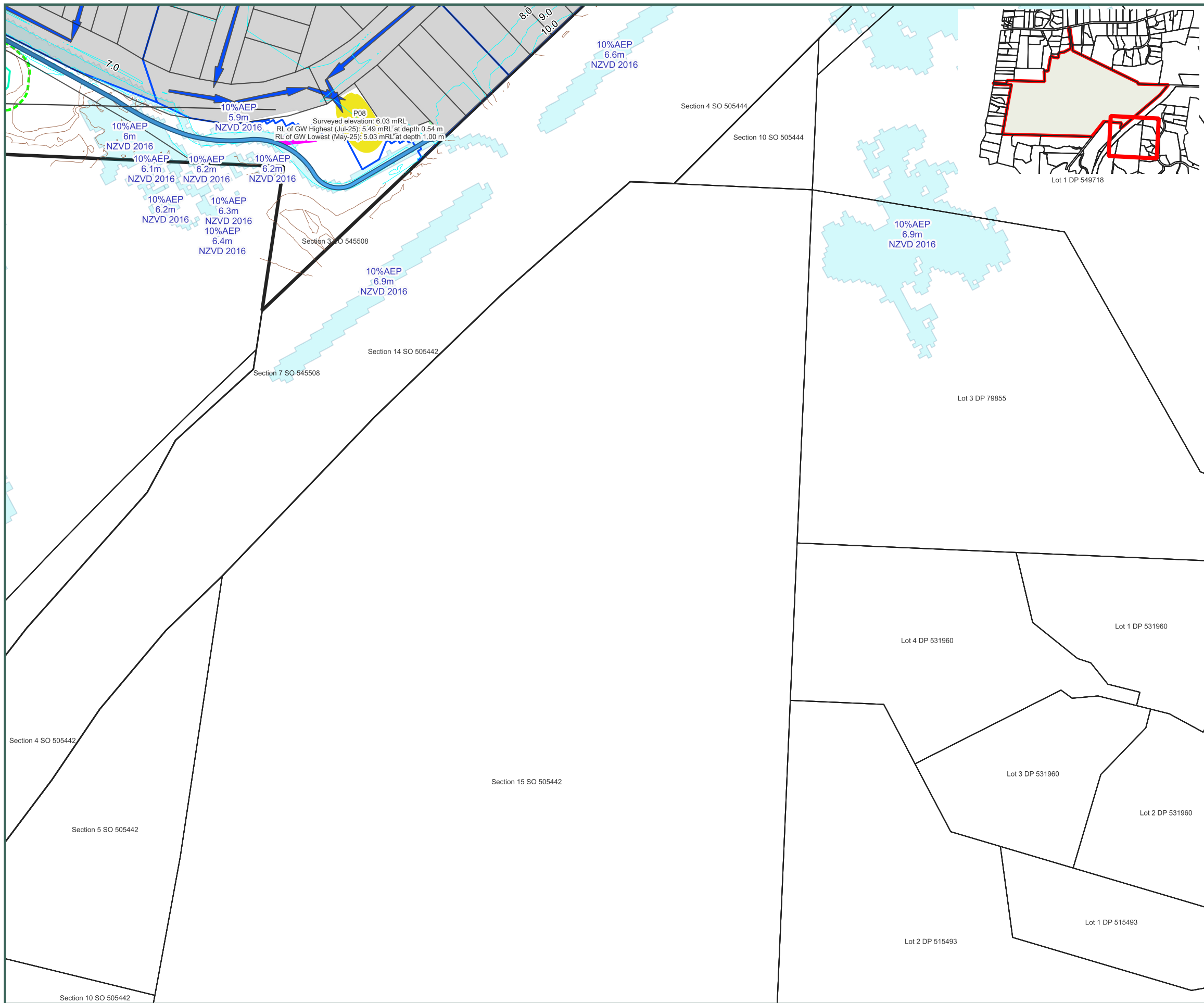
DESIGNED BY	JJH
DRAWN BY	JJH
APPROVED BY	PT

DATE 2026-03-13

SCALE Refer Scale Bar

2911-ALL-SW-422

This drawing contains data from other sources and has been prepared for a specific site and event. Landlink Limited does not accept any liability for its accuracy, content or unauthorised use.



Legend

- █ Exceedence Outlet and Rip Rap
 - Stormwater Management/Treatment Area
 - Wetlands Retained
 - Wetlands buffer
 - ▶ Stormwater Conveyance
 - Proposed SW catchment boundaries (Indicative)
- Area Classification
- 70% Imp
 - Treated / Attenuated or Greenfield

Notes:

1. Layout and levels are indicative and subject to refinement through detailed modelling.
2. 10% AEP conveyed via primary network; 1% AEP exceedance routed along road corridors.
3. Water-quality discharges to wetlands to be diffuse (refer Typology Plans 480 & 481).
4. Treatment devices to be located outside the modelled 10% AEP extent (subject to detailed design).
5. Proprietary devices may be used where groundwater levels constrain infiltration, consistent with the SMP.
6. Catchment-specific calculations are provided in the Landlink Stormwater Management Plan and appendices.

Stormwater Catchment and Features Plan
Sheet 14 of 14

Waikanae North Developments Ltd

Waikanae North
Peka Peka, Kapiti Coast

© Landlink Limited 2025



1 Ngaio Road, Waikanae 5036 + contactus@Landlink.nz

STAGE	ALL
REVISION	C
REVISION DETAILS	Issued For Consent

DESIGNED BY	JJH
DRAWN BY	JJH
APPROVED BY	PT

This drawing contains data from other sources and has been prepared for a specific site and event. Landlink Limited does not accept any liability for its accuracy, content or unauthorised use.

DATE 2026-03-13

SCALE Refer Scale Bar

2911-ALL-SW-423