

WETLAND 3
REFER M-C4609

WETLAND 2
REFER M-C4606

WETLAND 1
REFER M-C4602

WETLAND 4
REFER M-C4612

- NOTES
1. ALL WORKS TO BE IN ACCORDANCE WITH AUCKLAND COUNCIL STANDARDS.
 2. COORDINATES IN TERMS OF NZ GEODETIC DATUM MT EDEN 2000. LEVELS IN TERMS OF THE NEW ZEALAND VERTICAL DATUM 2016.
 3. IT IS THE CONTRACTORS RESPONSIBILITY TO LOCATE ALL SERVICES THAT MAY BE AFFECTED BY THEIR OPERATIONS.
 4. PIPE BEDDING: 0 - 10% GRANULAR BEDDING, 10 - 20% WEAK CONCRETE BEDDING, GREATER THAN 20% WEAK CONCRETE BEDDING (7MPA PLUS ANTI SCOUR BLOCKS AT 6M CRS).
 5. EACH CONNECTION SHALL BE MARKED BY A 50MMX50MM TREATED PINE STAKE EXTENDING 600MM ABOVE GROUND LEVEL WITH THE TOP PAINTED. THIS MARKER POST SHALL BE PLACED ALONGSIDE A TIMBER MARKER INSTALLED AT THE TIME OF PIPELAYING AND EXTENDING FROM THE CONNECTION TO 150MM BELOW FINISHED GROUND LEVEL. CONNECTIONS SHALL BE ACCURATELY INDICATED ON "AS BUILT" PLANS.
 6. APPROVED HARDFILL IS TO BE USED IN BACKFILLING OF ALL ROAD CROSSINGS AND VEHICLE CROSSINGS TO COUNCIL STANDARDS.
 7. HEAVY DUTY MANHOLE LIDS AND FRAMES TO BE USED IN TRAFFICKED AREAS.
 8. ALL MANHOLES ARE TO BE 1050MMØ PRECAST CONCRETE UNLESS SHOWN OTHERWISE.
 9. ALL CATCHPIT LEADS SHALL HAVE MIN COVER 1.0M.
 10. ALL LINES TO BE ABANDONED SHALL BE SEALED AT EACH END. TIMING OF ALL SEALING TO BE COORDINATED WITH COUNCIL STAFF.
 11. ALL LOT CONNECTION TO BE MIN 100mm uPVC SN16 UNLESS SHOWN OTHERWISE.

LEGEND

— EX BDY

— PROP SL BDY

Rev	Description	By	Date
A	RESOURCE CONSENT	AO	02/2025
Survey	MAVEN		11/2024
Design	AO		12/2024
Drawn	OE		01/2025
Checked	LC		02/2025

Maven Associates
09 571 0050
info@maven.co.nz
www.maven.co.nz
5 Owens Road, Epsom
Auckland 1023

Project
**SUNFIELD
SUBDIVISION
AUCKLAND
FOR SUNFIELD
DEVELOPMENTS LTD.**

Title
**PROPOSED WETLANDS -
OVERVIEW PLAN**

Project no.	215010
Scale	1:10000 @ A3
Cad file	215010-M-C460_DWG
Drawing no.	M-C4601
Rev	A

RESOURCE CONSENT



LOT 1 DP 109061

345ø SMAF ORIFICE @ IL = 20.70
750ø SW PIPE @ IL = 21.15 (POST STORM DRAINDOWN)

SPILL WAY TO BE LOCATED ALONG BOUNDARY
BUND REFER TO DRAWING M-C4605

LOW FLOW BY PASS INTO WETLAND
BOX CULVERT 0.4m X 1.2m

3.5m WIDE ACCESS
TRACK AROUND
WETLAND

2YR & 10YR FLOOD STORAGE AREA
PEAK 2YR WATER LEVEL = 22.37 mRL
PEAK 10YR WATER LEVEL = 22.55 mRL

WETLAND LOCATION AND SHAPE
SHOWN IS INDICATIVE

750ø SW PIPE @ IL = 20.70
w WASTOP CHECK VALVE
OR SIMILAR FOR POST
FLOOD DRAINDOWN

PROPOSED DRYING AREA

SPILLWAY TO 100YR
FLOOD STORAGE
RL = 22.57

100YR FLOOD STORAGE AREA
PEAK 100YR WATER LEVEL = 22.60 mRL

INDICATIVE LOCATION
OF 3.5m WIDE
ACCESS WAY TO
WETLAND WITH MAX
1:8 SLOPE

WETLAND 1 - PLAN
SCALE 1:1000

NOTES

1. ALL WORKS TO BE IN ACCORDANCE WITH AUCKLAND COUNCIL STANDARDS.
2. COORDINATES IN TERMS OF NZ GEODETIC DATUM MT EDEN 2000. LEVELS IN TERMS OF THE NEW ZEALAND VERTICAL DATUM 2016.
3. IT IS THE CONTRACTORS RESPONSIBILITY TO LOCATE ALL SERVICES THAT MAY BE AFFECTED BY THEIR OPERATIONS.

LEGEND

PR WETLAND FGL

Rev	Description	By	Date
A	RESOURCE CONSENT	AO	02/2025
Survey	MAVEN		11/2024
Design	AO		12/2024
Drawn	OE		01/2025
Checked	LC		02/2025

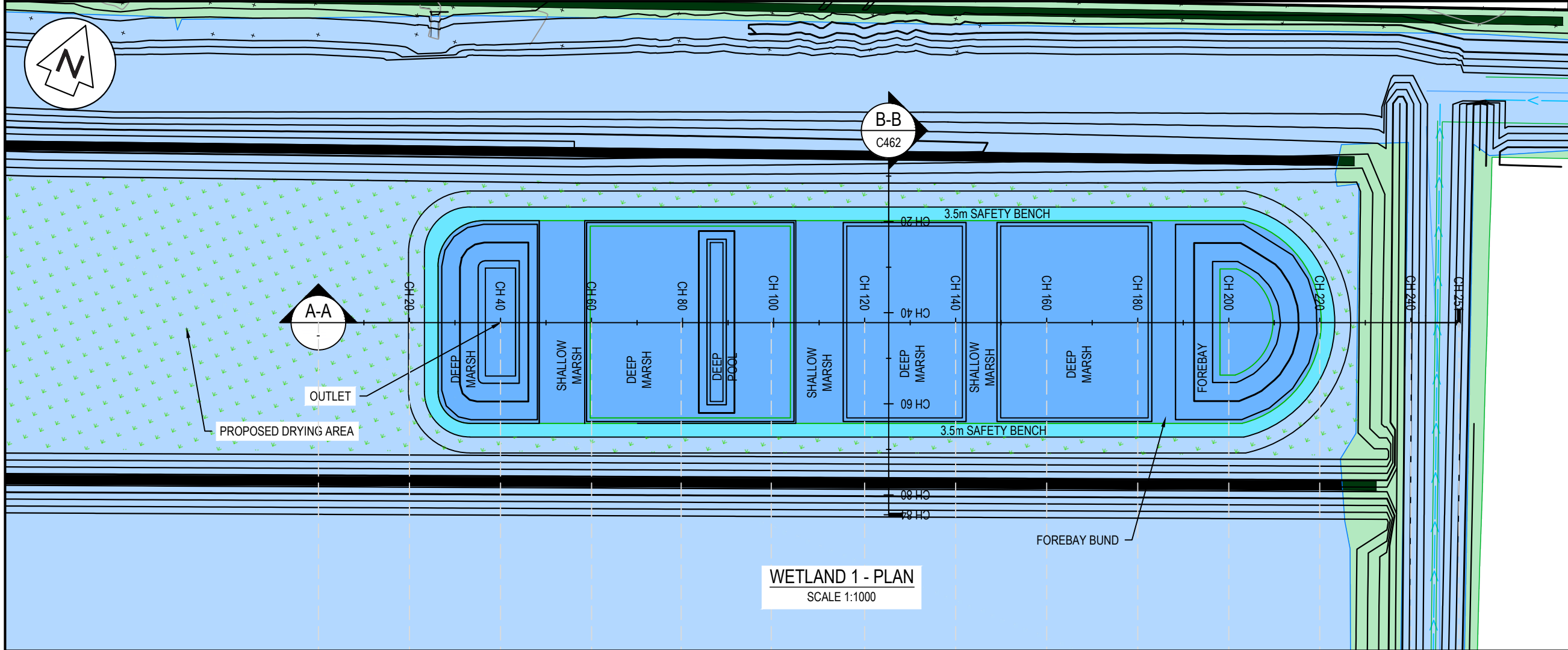


Project
**SUNFIELD
 SUBDIVISION
 AUCKLAND
 FOR SUNFIELD
 DEVELOPMENTS LTD.**

Title
**PROPOSED WETLANDS -
 WETLAND 1
 PLAN & LONGSECTION**

Project no.	215010
Scale	AS SHOWN
Cad file	215010-M-C460_DWG
Drawing no.	M-C4602
Rev	A

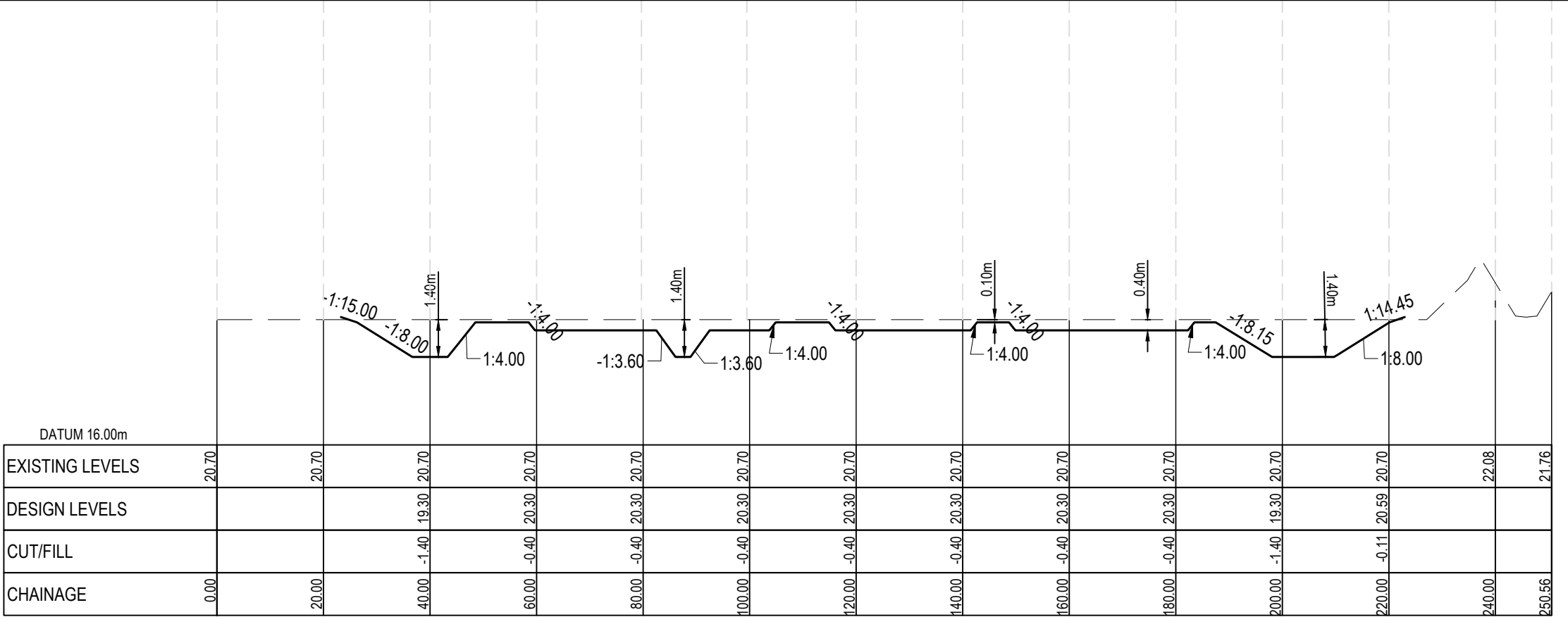
RESOURCE CONSENT



WETLAND 1 - PLAN
SCALE 1:1000

- NOTES
1. ALL WORKS TO BE IN ACCORDANCE WITH AUCKLAND COUNCIL STANDARDS.
 2. COORDINATES IN TERMS OF NZ GEODETIC DATUM MT EDEN 2000. LEVELS IN TERMS OF THE NEW ZEALAND VERTICAL DATUM 2016.
 3. IT IS THE CONTRACTORS RESPONSIBILITY TO LOCATE ALL SERVICES THAT MAY BE AFFECTED BY THEIR OPERATIONS.

LEGEND
PR WETLAND FGL



WETLAND 1 A-A
SCALE: HORI 1:1000 VERT 1:200

A	RESOURCE CONSENT	AO	02/2025
Rev	Description	By	Date
Survey	MAVEN		11/2024
Design	AO		12/2024
Drawn	OE		01/2025
Checked	LC		02/2025

M Maven Associates
 09 571 0050
 info@maven.co.nz
 www.maven.co.nz
 5 Owens Road, Epsom
 Auckland 1023

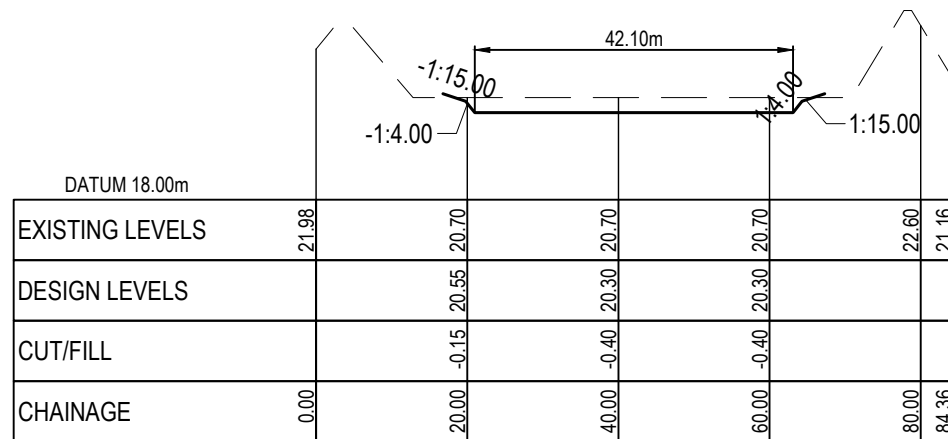
Project
**SUNFIELD
 SUBDIVISION
 AUCKLAND
 FOR SUNFIELD
 DEVELOPMENTS LTD.**

Title
**PROPOSED WETLANDS -
 WETLAND 1
 PLAN & LONGSECTION**

Project no.	215010
Scale	AS SHOWN
Cad file	215010-M-C460-SW WETLANDS.DWG
Drawing no.	M-C4603
Rev	A

RESOURCE CONSENT

DATE: 24/02/25 FILEPATH: F:\Maven\PROJECTS\215010 - SUNFIELD\215010-M-C460-SW WETLANDS.DWG



WETLAND 1 B-B
SCALE: HORI 1:1000 VERT 1:200

- NOTES
1. ALL WORKS TO BE IN ACCORDANCE WITH AUCKLAND COUNCIL STANDARDS.
 2. COORDINATES IN TERMS OF NZ GEODETIC DATUM MT EDEN 2000. LEVELS IN TERMS OF THE NEW ZEALAND VERTICAL DATUM 2016.
 3. IT IS THE CONTRACTORS RESPONSIBILITY TO LOCATE ALL SERVICES THAT MAY BE AFFECTED BY THEIR OPERATIONS.

LEGEND
PR WETLAND FGL

Rev	Description	By	Date
A	RESOURCE CONSENT	AO	02/2025

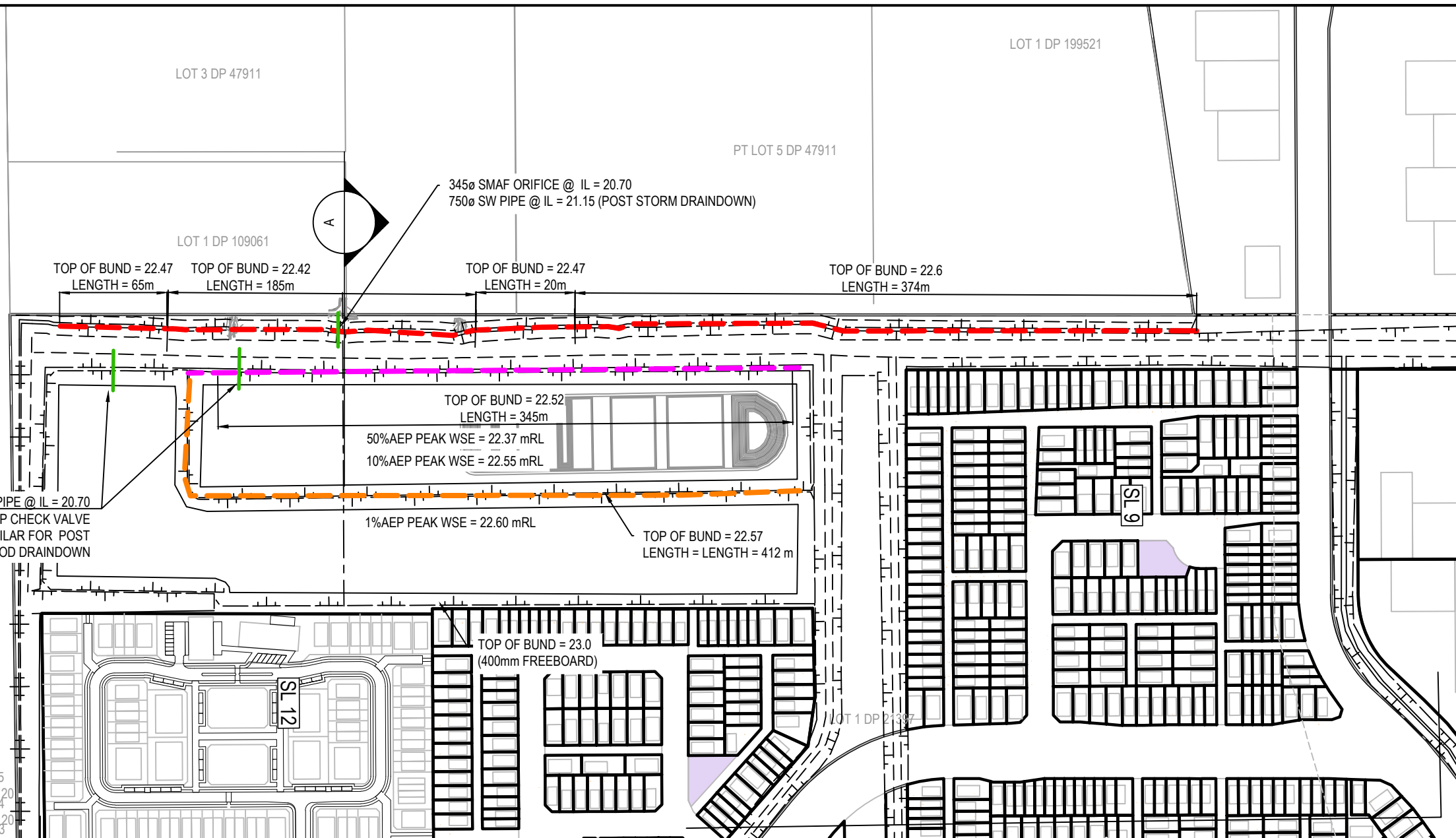
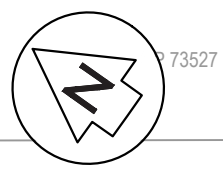
M Maven Associates
 09 571 0050
 info@maven.co.nz
 www.maven.co.nz
 5 Owens Road, Epsom
 Auckland 1023

Project
**SUNFIELD
 SUBDIVISION
 AUCKLAND
 FOR SUNFIELD
 DEVELOPMENTS LTD.**

Title
**PROPOSED WETLANDS -
 WETLAND 1
 CROSS SEC. & OUTLET**

Project no.	215010
Scale	AS SHOWN
Cad file	215010-M-C460-SW WETLANDS.DWG
Drawing no.	M-C4604
Rev	A

RESOURCE CONSENT



- NOTES
1. ALL WORKS TO BE IN ACCORDANCE WITH AUCKLAND COUNCIL STANDARDS.
 2. COORDINATES IN TERMS OF NZ GEODETIC DATUM MT EDEN 2000. LEVELS IN TERMS OF THE AUCKLAND VERTICAL DATUM 1946.
 3. IT IS THE CONTRACTORS RESPONSIBILITY TO LOCATE ALL SERVICES THAT MAY BE AFFECTED BY THEIR OPERATIONS.
 4. PIPE BEDDING: 0 - 10% GRANULAR BEDDING, 10 - 20% WEAK CONCRETE BEDDING, GREATER THAN 20% WEAK CONCRETE BEDDING (7MPA PLUS ANTI SCOUR BLOCKS AT 6m CRS).
 5. EACH CONNECTION SHALL BE MARKED BY A 50mmX50mm TREATED PINE STAKE EXTENDING 600mm ABOVE GROUND LEVEL WITH THE TOP PAINTED. THIS MARKER POST SHALL BE PLACED ALONGSIDE A TIMBER MARKER INSTALLED AT THE TIME OF PIPELAYING AND EXTENDING FROM THE CONNECTION TO 150mm BELOW FINISHED GROUND LEVEL. CONNECTIONS SHALL BE ACCURATELY INDICATED ON "AS BUILT" PLANS.
 6. APPROVED HARDFILL IS TO BE USED IN BACKFILLING OF ALL ROAD CROSSINGS AND VEHICLE CROSSINGS TO COUNCIL STANDARDS.
 7. HEAVY DUTY MANHOLE LIDS AND FRAMES TO BE USED IN TRAFFICKED AREAS.
 8. ALL MANHOLES ARE TO BE 1050mmØ PRECAST CONCRETE UNLESS SHOWN OTHERWISE.
 9. ALL CATCHPIT LEADS SHALL HAVE MIN COVER 1.0m.
 10. ALL LINES TO BE ABANDONED SHALL BE SEALED AT EACH END. TIMING OF ALL SEALING TO BE COORDINATED WITH COUNCIL STAFF.
 11. ALL LOT CONNECTION TO BE MIN 100mm uPVC SN16 UNLESS SHOWN OTHERWISE.

LEGEND

- EX BDY
- PR BDY
- OUTFLOW 1 SPILLWAY
- SPILLWAY 2
- SPILLWAY 3

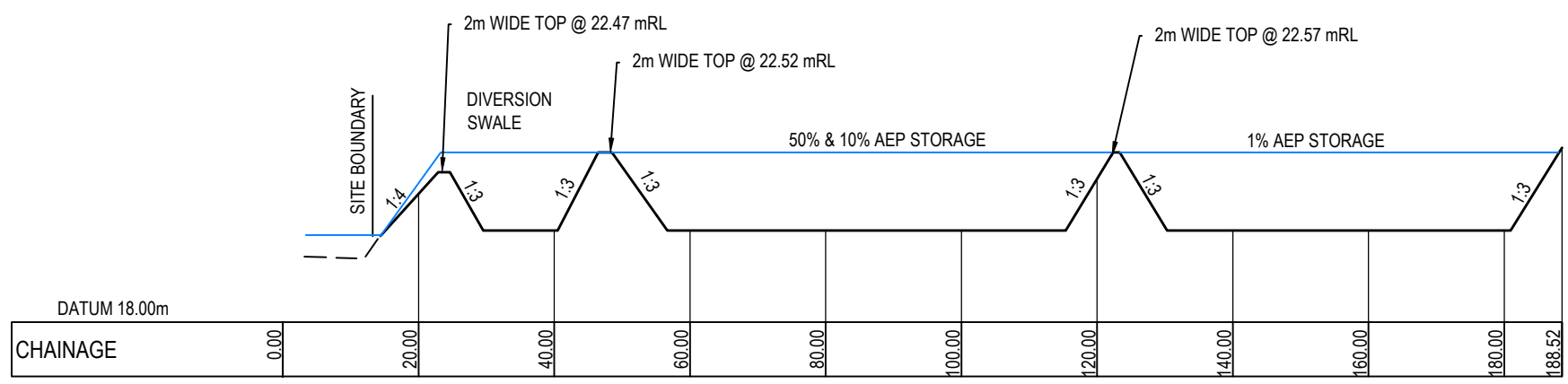
Rev	Description	By	Date
A	RESOURCE CONSENT	YW	02/2025
Survey	SURVEYWORK		02/2021
Design	YW		11/2024
Drawn	OQ		11/2024
Checked	JP/LC		02/2025

Maven Associates
 09 571 0050
 info@maven.co.nz
 www.maven.co.nz
 5 Owens Road, Epsom
 Auckland 1023

Project
**SUNFIELD DEVELOPMENT
 ARDMORE, AUCKLAND
 MASTERPLANNING
 FOR SUNFIELD
 DEVELOPMENTS LIMITED**

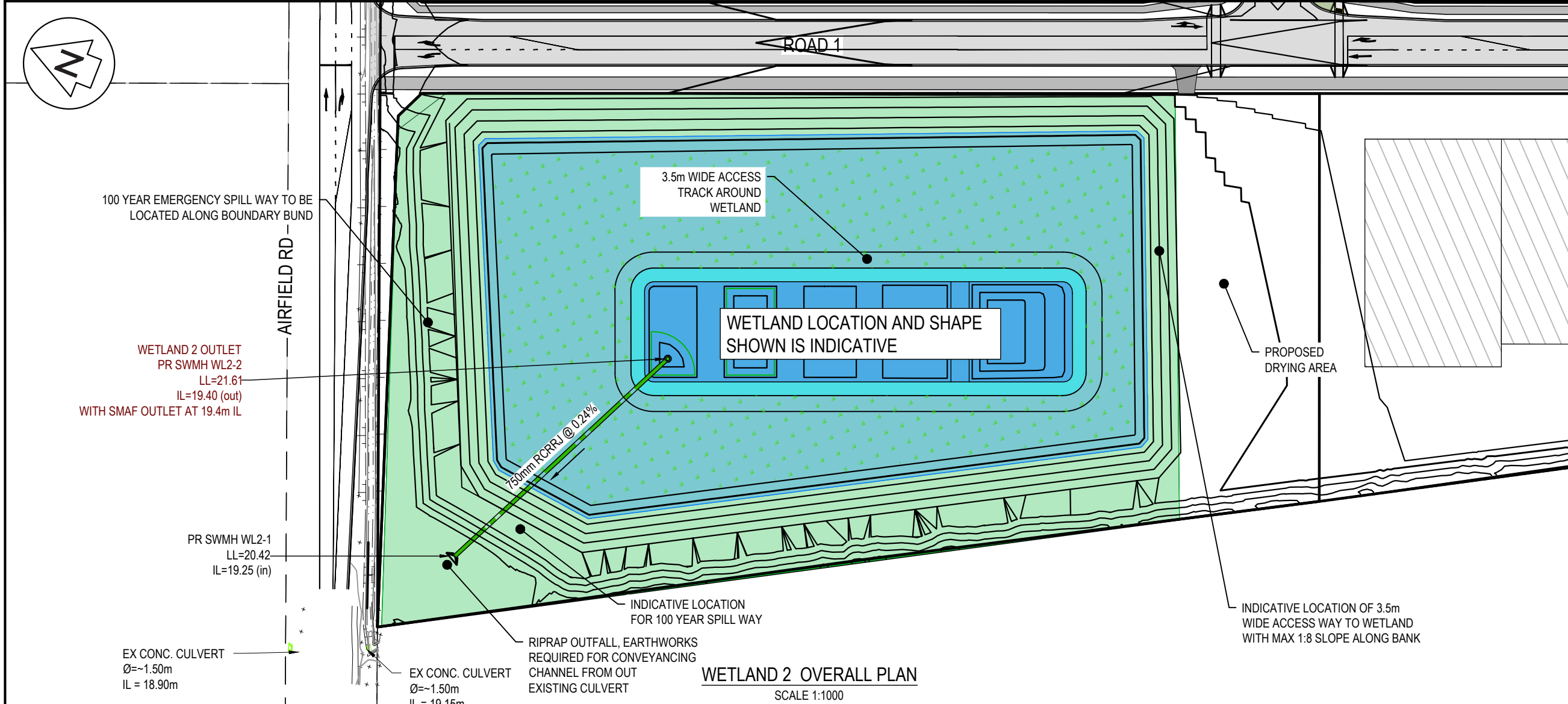
Title
**PROPOSED
 NORTHERN POND 1
 SPILLWAY PLAN**

Project no.	215010
Scale	1:3000 @ A3
Cad file	215010-M-C460-SW SPILLWAY.DWG
Drawing no.	M-C4605
Rev	A



CROSS SECTION A - NORTHERN POND 1
 NOT TO SCALE

RESOURCE CONSENT



- NOTES
1. ALL WORKS TO BE IN ACCORDANCE WITH AUCKLAND COUNCIL STANDARDS.
 2. COORDINATES IN TERMS OF NZ GEODETIC DATUM MT EDEN 2000. LEVELS IN TERMS OF THE NEW ZEALAND VERTICAL DATUM 2016.
 3. IT IS THE CONTRACTORS RESPONSIBILITY TO LOCATE ALL SERVICES THAT MAY BE AFFECTED BY THEIR OPERATIONS.

LEGEND
 PR WETLAND FGL

Rev	Description	By	Date
A	RESOURCE CONSENT	AO	02/2025

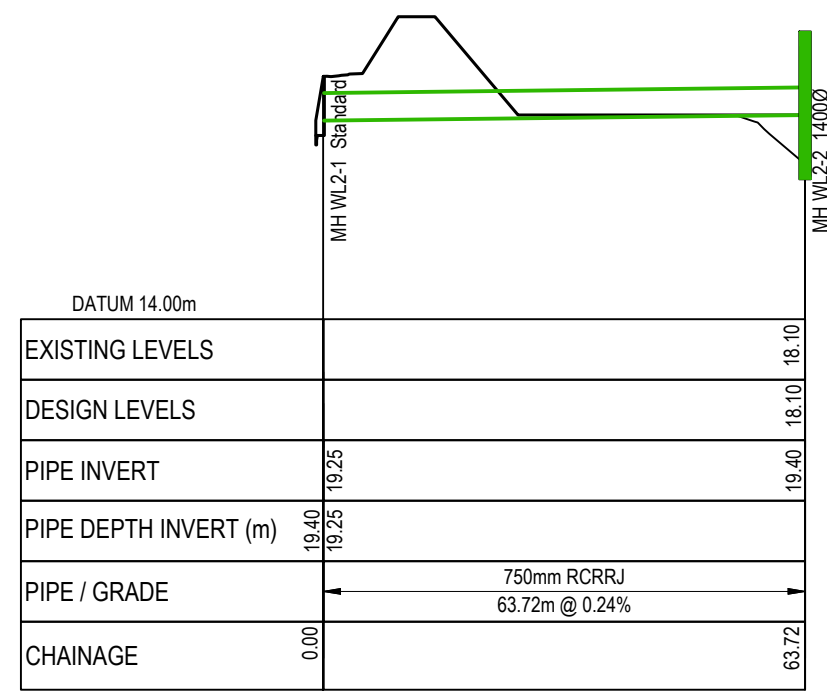
Maven Associates
 09 571 0050
 info@maven.co.nz
 www.maven.co.nz
 5 Owens Road, Epsom
 Auckland 1023

Project
SUNFIELD SUBDIVISION AUCKLAND FOR SUNFIELD DEVELOPMENTS LTD.

Title
PROPOSED WETLANDS - WETLAND 2 PLAN & LONGSECTION

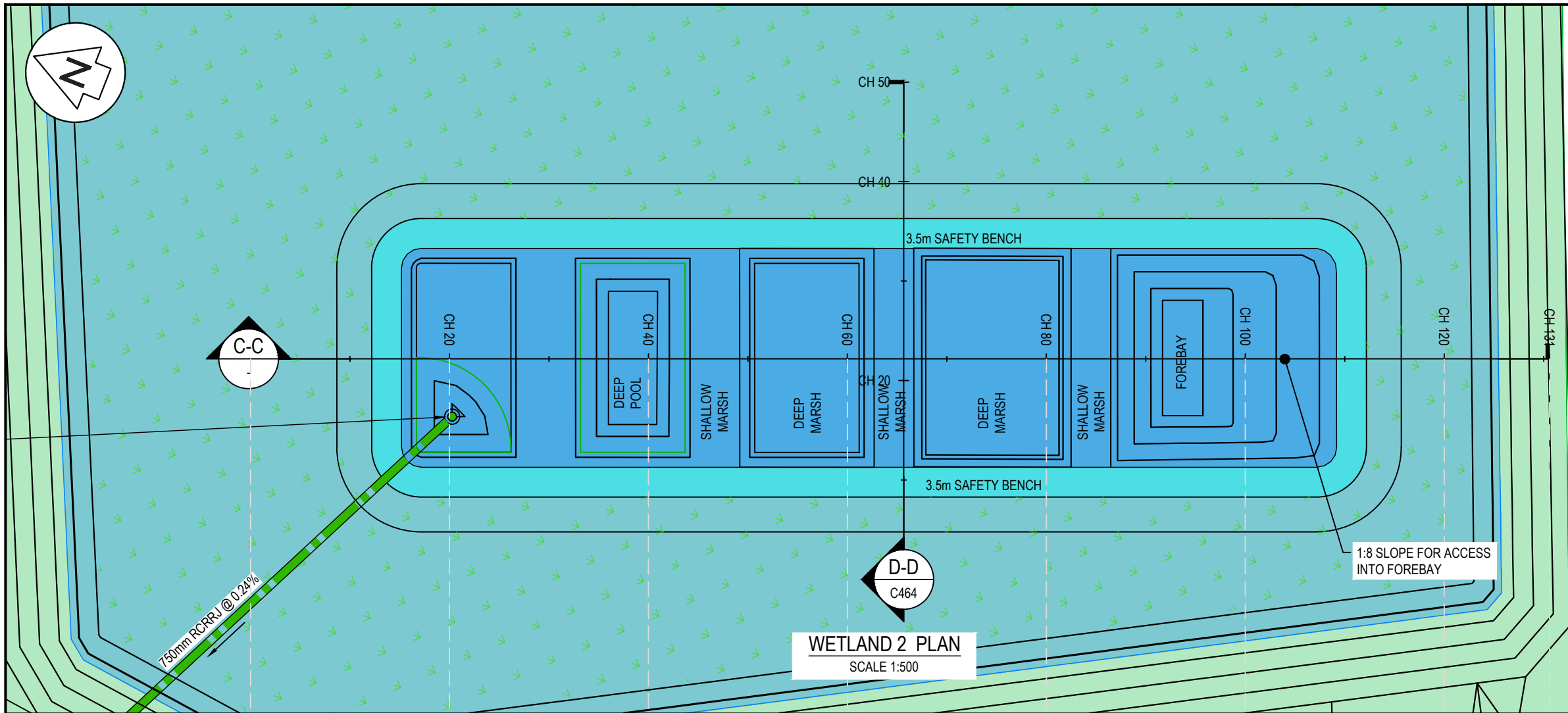
Project no.	215010
Scale	AS SHOWN
Cad file	215010-M-C460-SW WETLANDS.DWG
Drawing no.	M-C4606
Rev	A

STORMWATER QUALITY DETAILS	
PERMANENT WATER LEVEL	19.4 mRL
OUTLET DETAILS	
SMAF OUTLET	180mm Ø
2YR/10YR OUTLET	2m @ 20.4mRL WEIR IN MANHOLE WITH SCRUFFY DOME
100YR SPILLWAY	4m LONG SPILLWAY @ RL 20.67m
100YR EMERGENCY SPILLWAY	70m LONG @ RL 21.5m



RESOURCE CONSENT

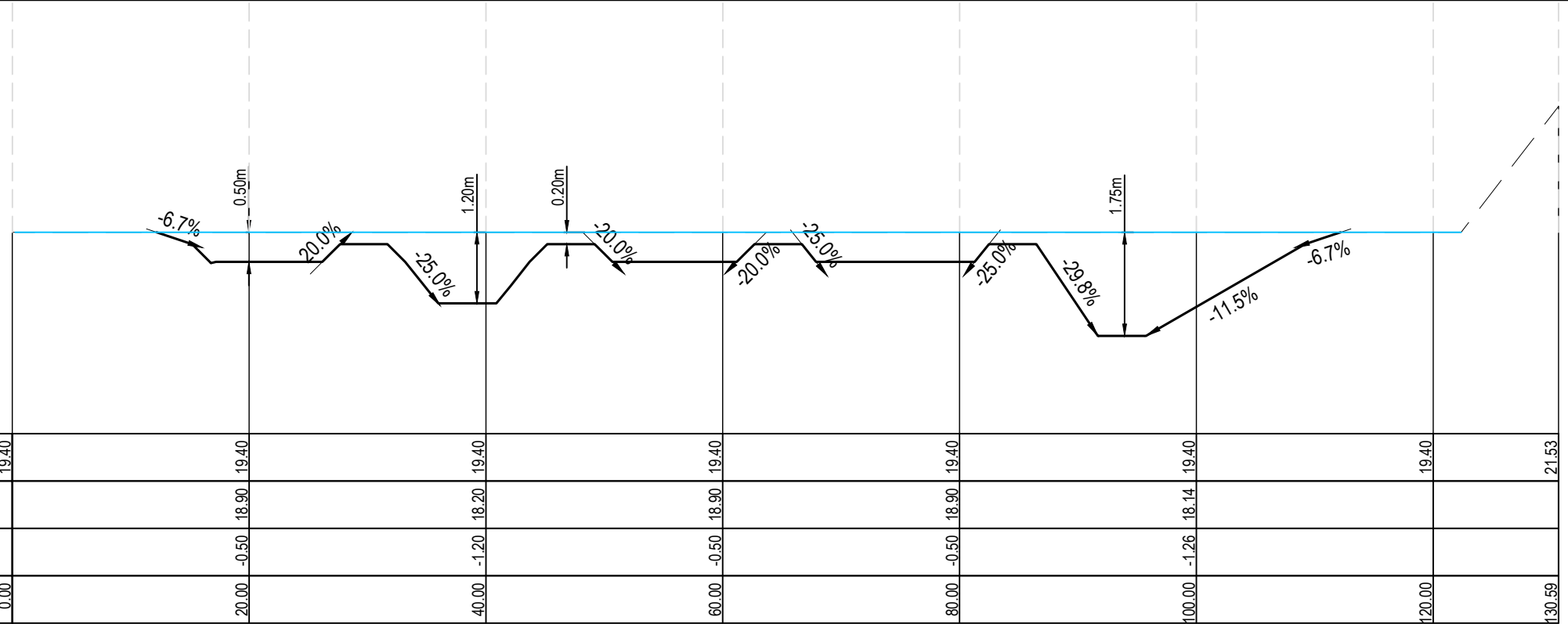
DATE: 24/02/25 FILEPATH: F:\Maven\PROJECTS\215010 - SUNFIELD\215010-M-C460-SW WETLANDS.DWG



WETLAND 2 PLAN
SCALE 1:500

- NOTES
1. ALL WORKS TO BE IN ACCORDANCE WITH AUCKLAND COUNCIL STANDARDS.
 2. COORDINATES IN TERMS OF NZ GEODETIC DATUM MT EDEN 2000. LEVELS IN TERMS OF THE NEW ZEALAND VERTICAL DATUM 2016.
 3. IT IS THE CONTRACTORS RESPONSIBILITY TO LOCATE ALL SERVICES THAT MAY BE AFFECTED BY THEIR OPERATIONS.

LEGEND
PR WETLAND FGL



DATUM 16.00m	
EXISTING LEVELS	19.40
DESIGN LEVELS	18.90
CUT/FILL	-0.50
CHAINAGE	0.00

20.00	40.00	60.00	80.00	100.00	120.00	130.59
19.40	18.20	18.90	18.90	18.14	19.40	21.53
-0.50	-1.20	-0.50	-0.50	-1.26		
0.00					0.00	

WETLAND 2 C-C
SCALE: HORI 1:1000 VERT 1:200

Rev	Description	By	Date
A	RESOURCE CONSENT	AO	02/2025

Survey	Design	Drawn	Checked
MAVEN	AO	OE	LC

M Maven Associates
09 571 0050
info@maven.co.nz
www.maven.co.nz
5 Owens Road, Epsom
Auckland 1023

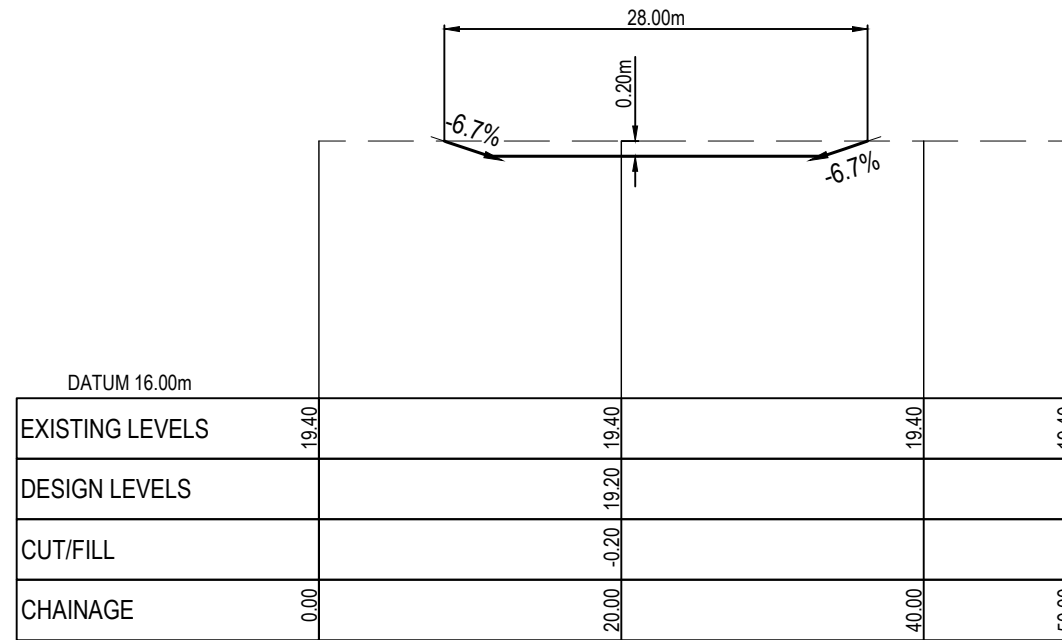
Project
**SUNFIELD
SUBDIVISION
AUCKLAND
FOR SUNFIELD
DEVELOPMENTS LTD.**

Title
**PROPOSED WETLANDS -
WETLAND 2
PLAN & LONGSECTION**

Project no.	215010
Scale	AS SHOWN
Cad file	215010-M-C460-SW WETLANDS.DWG
Drawing no.	M-C4607
Rev	A

RESOURCE CONSENT

DATE: 24/05/25 FILEPATH: F:\MAVEN\PROJECTS\2025\10\SUNFIELD\02\0510\M-C460-SW WETLANDS.DWG



WETLAND 2 D-D
SCALE: HORI 1:1000 VERT 1:200

- NOTES
1. ALL WORKS TO BE IN ACCORDANCE WITH AUCKLAND COUNCIL STANDARDS.
 2. COORDINATES IN TERMS OF NZ GEODETIC DATUM MT EDEN 2000. LEVELS IN TERMS OF THE NEW ZEALAND VERTICAL DATUM 2016.
 3. IT IS THE CONTRACTORS RESPONSIBILITY TO LOCATE ALL SERVICES THAT MAY BE AFFECTED BY THEIR OPERATIONS.

LEGEND
PR WETLAND FGL

Rev	Description	By	Date
A	RESOURCE CONSENT	AO	02/2025

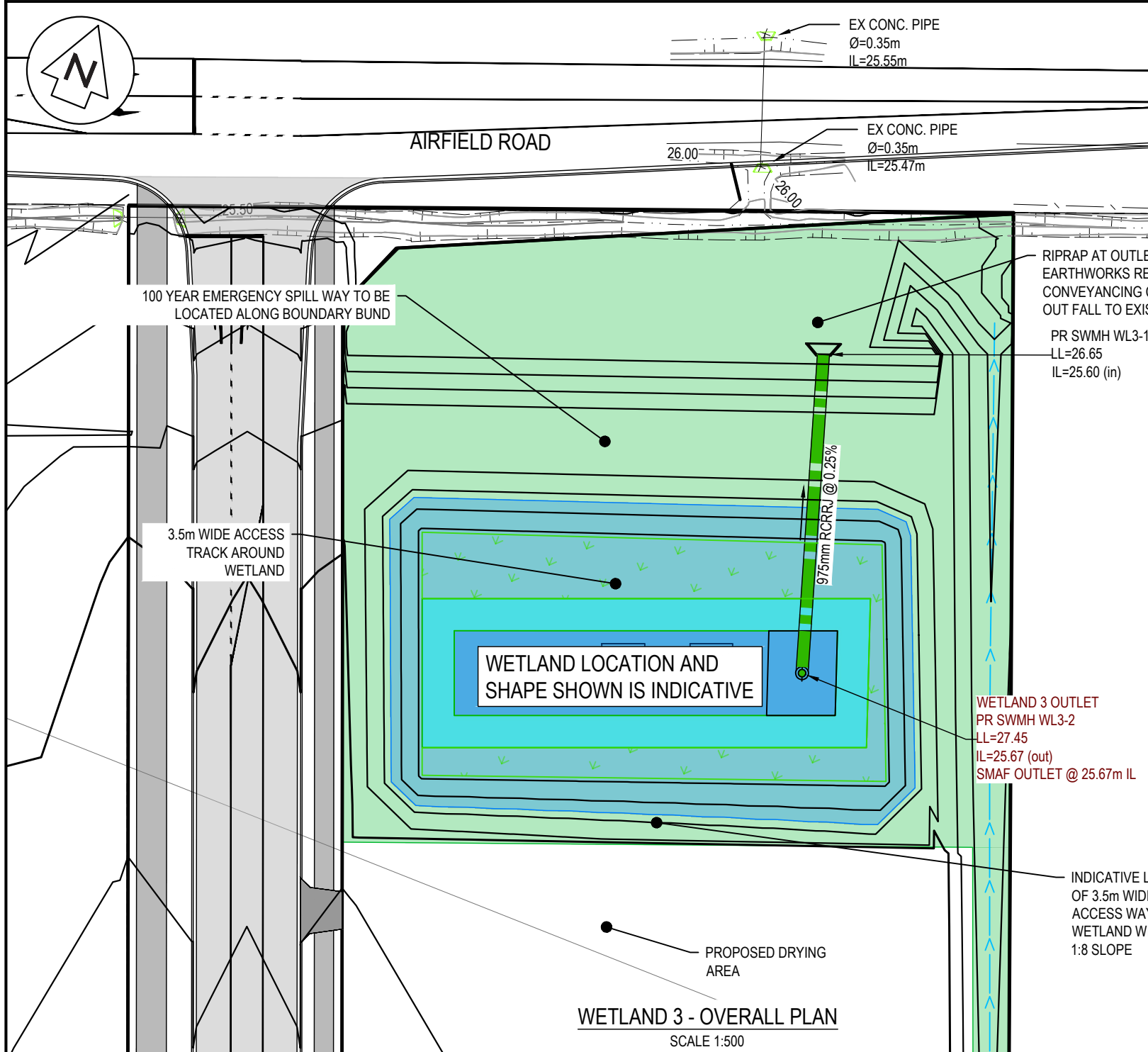
M Maven Associates
 09 571 0050
 info@maven.co.nz
 www.maven.co.nz
 5 Owens Road, Epsom
 Auckland 1023

Project
**SUNFIELD
 SUBDIVISION
 AUCKLAND
 FOR SUNFIELD
 DEVELOPMENTS LTD.**

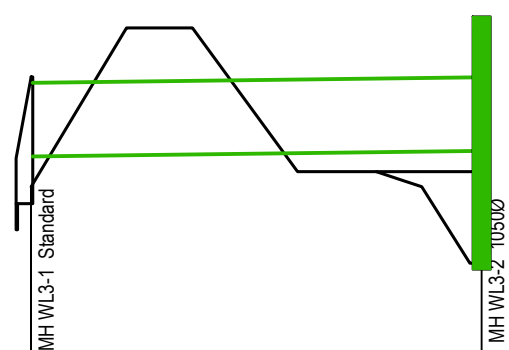
Title
**PROPOSED WETLANDS -
 WETLAND 2
 CROSS SEC. & OUTLET**

Project no.	215010
Scale	AS SHOWN
Cad file	215010-M-C460-SW WETLANDS.DWG
Drawing no.	M-C4608
Rev	A

RESOURCE CONSENT



WETLAND 3 - OVERALL PLAN
SCALE 1:500



DATUM 22.00m	
EXISTING LEVELS	24.18
DESIGN LEVELS	24.18
PIPE INVERT	25.60
PIPE DEPTH INVERT (m)	25.67
PIPE / GRADE	975mm RCRRJ 29.79m @ 0.25%
CHAINAGE	0.00 to 29.79

WETLAND 3 OUTLET
SCALE: HORI 1:1000 VERT 1:200

STORMWATER QUALITY DETAILS	
PERMANENT WATER LEVEL	25.67 mRL
OUTLET DETAILS	
SMAF OUTLET	68mm Ø
2YR/10YR/100YR OUTLET	SCRUFFY DOME MANHOLE WITH 0.7m WEIR @ RL26.43m
100YR EMERGENCY SPILLWAY	20m LONG @ 27.27m RL

- NOTES
- ALL WORKS TO BE IN ACCORDANCE WITH AUCKLAND COUNCIL STANDARDS.
 - COORDINATES IN TERMS OF NZ GEODETIC DATUM MT EDEN 2000. LEVELS IN TERMS OF THE NEW ZEALAND VERTICAL DATUM 2016.
 - IT IS THE CONTRACTORS RESPONSIBILITY TO LOCATE ALL SERVICES THAT MAY BE AFFECTED BY THEIR OPERATIONS.

LEGEND
PR WETLAND FGL

Rev	Description	By	Date
A	RESOURCE CONSENT	AO	02/2025

Maven Associates
09 571 0050
info@maven.co.nz
www.maven.co.nz
5 Owens Road, Epsom
Auckland 1023

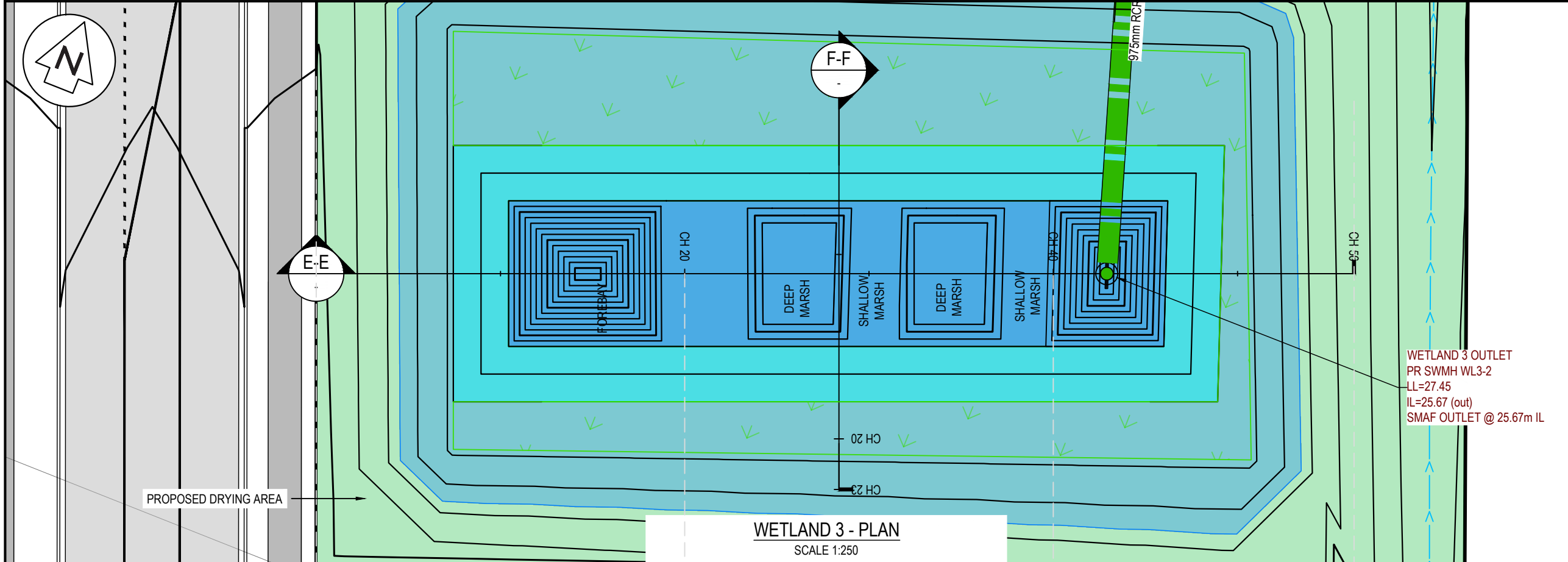
Project
**SUNFIELD
SUBDIVISION
AUCKLAND
FOR SUNFIELD
DEVELOPMENTS LTD.**

Title
**PROPOSED WETLANDS -
WETLAND 3
PLAN & LONGSECTION**

Project no.	215010
Scale	AS SHOWN
Cad file	215010-M-C460-SW WETLANDS.DWG
Drawing no.	M-C4609
Rev	A

RESOURCE CONSENT

DATE: 24/02/25 FILEPATH: F:\Maven\PROJECTS\2024\SUNFIELD\02\10510\M-C460-SW WETLANDS.DWG



- NOTES
1. ALL WORKS TO BE IN ACCORDANCE WITH AUCKLAND COUNCIL STANDARDS.
 2. COORDINATES IN TERMS OF NZ GEODETIC DATUM MT EDEN 2000. LEVELS IN TERMS OF THE NEW ZEALAND VERTICAL DATUM 2016.
 3. IT IS THE CONTRACTORS RESPONSIBILITY TO LOCATE ALL SERVICES THAT MAY BE AFFECTED BY THEIR OPERATIONS.

LEGEND

PR WETLAND FGL

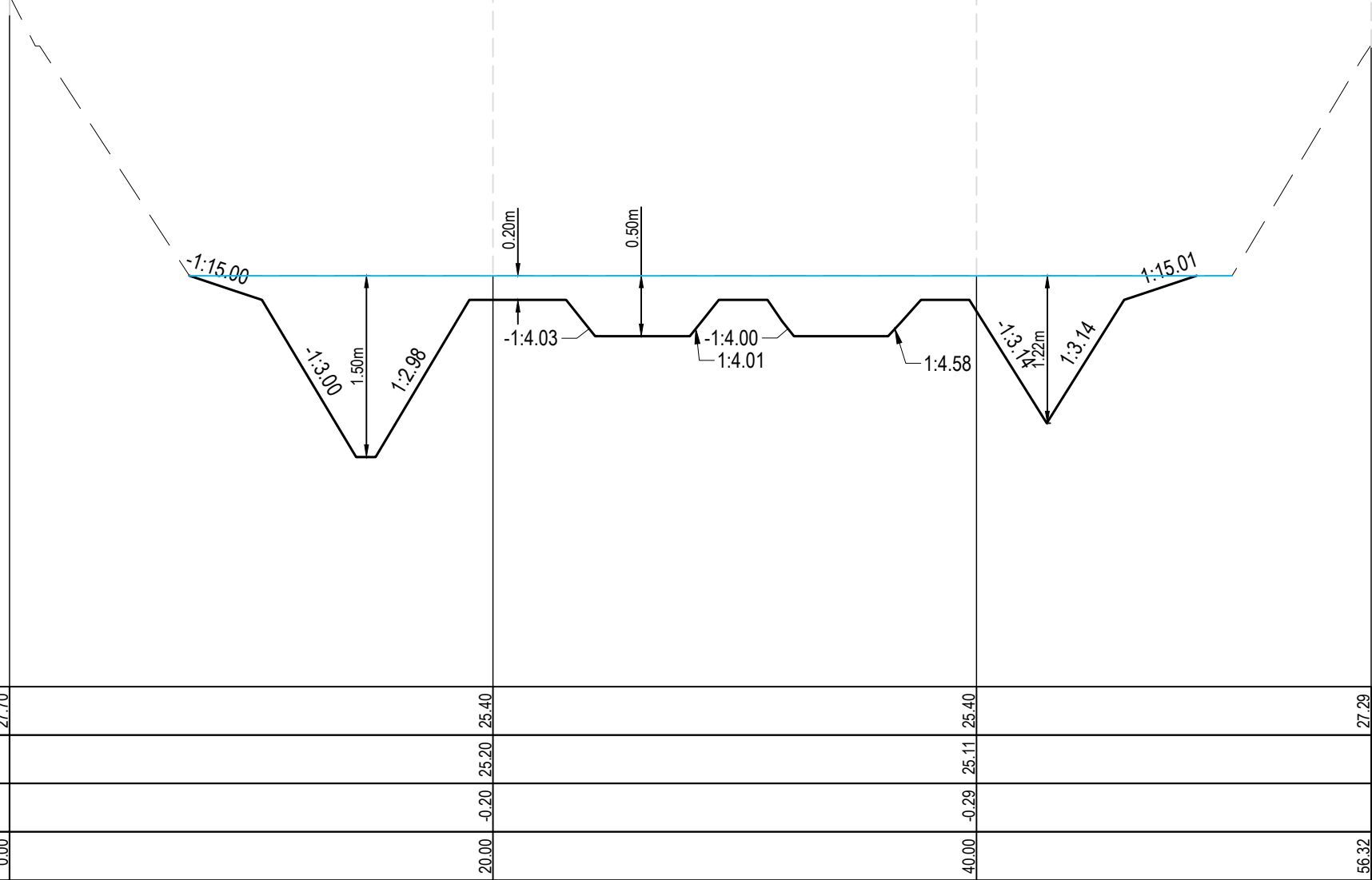
Rev	Description	By	Date
A	RESOURCE CONSENT	AO	02/2025
Survey	MAVEN		11/2024
Design	AO		12/2024
Drawn	OE		01/2025
Checked	LC		02/2025

M Maven Associates
09 571 0050
info@maven.co.nz
www.maven.co.nz
5 Owens Road, Epsom
Auckland 1023

Project
**SUNFIELD
SUBDIVISION
AUCKLAND
FOR SUNFIELD
DEVELOPMENTS LTD.**

Title
**PROPOSED WETLANDS -
WETLAND 3
PLAN & LONGSECTION**

Project no.	215010
Scale	AS SHOWN
Cad file	215010-M-C460-SW WETLANDS.DWG
Drawing no.	M-C4610
Rev	A

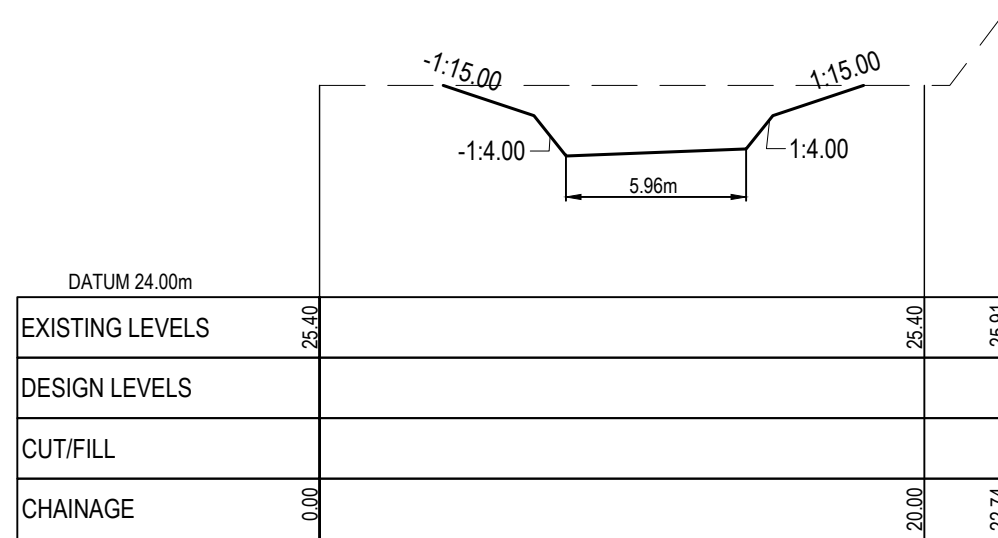


EXISTING LEVELS	27.70	25.40	27.29
DESIGN LEVELS		25.20	25.11
CUT/FILL		-0.20	-0.29
CHAINAGE	0.00	20.00	40.00
			56.32

RESOURCE CONSENT

DATE: 24/02/25 FILEPATH: F:\M\AVEN\PROJECTS\2024\SUNFIELD\02\5010\M-C460-SW WETLANDS.DWG

DATE: 2/25 FILEPATH: F:\MVEN\PROJECTS\1919 - SUNFIELD\DWG\1919-10-C460-SW WETLANDS.DWG



WETLAND 3 F-F
SCALE: HORI 1:1000 VERT 1:200

- NOTES
1. ALL WORKS TO BE IN ACCORDANCE WITH AUCKLAND COUNCIL STANDARDS.
 2. COORDINATES IN TERMS OF NZ GEODETIC DATUM MT EDEN 2000. LEVELS IN TERMS OF THE NEW ZEALAND VERTICAL DATUM 2016.
 3. IT IS THE CONTRACTORS RESPONSIBILITY TO LOCATE ALL SERVICES THAT MAY BE AFFECTED BY THEIR OPERATIONS.

LEGEND
PR WETLAND FGL

Rev	Description	By	Date
A	RESOURCE CONSENT	AO	02/2025
Survey	MAVEN		11/2024
Design	AO		12/2024
Drawn	OE		01/2025
Checked	LC		02/2025



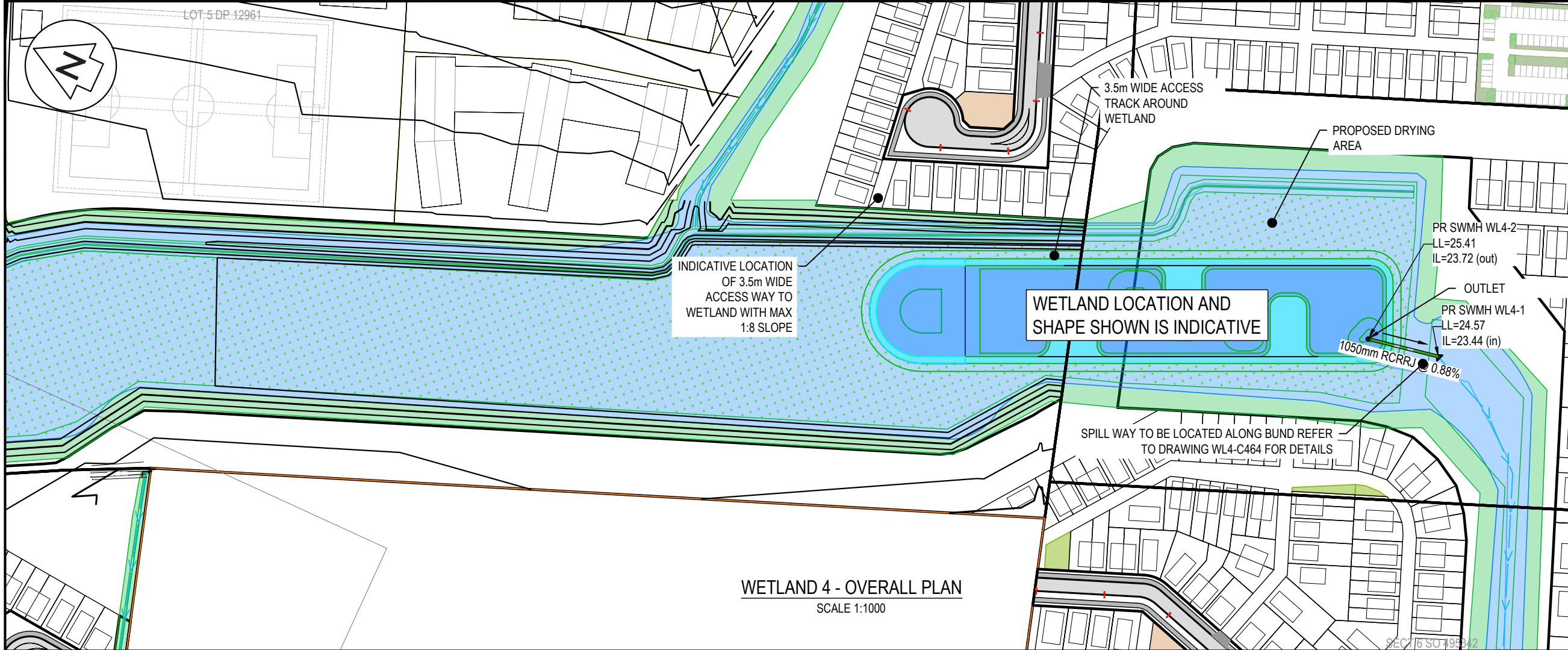
Project
**SUNFIELD
SUBDIVISION
AUCKLAND
FOR SUNFIELD
DEVELOPMENTS LTD.**

Title
**PROPOSED WETLANDS -
WETLAND 3
CROSS SEC. & OUTLET**

Project no.	215010
Scale	AS SHOWN
Cad file	215010-M-C460-SW WETLANDS.DWG
Drawing no.	M-C4611
Rev	A

RESOURCE CONSENT

LOT 5 DP 12961



WETLAND 4 - OVERALL PLAN
SCALE 1:1000

NOTES

1. ALL WORKS TO BE IN ACCORDANCE WITH AUCKLAND COUNCIL STANDARDS.
2. COORDINATES IN TERMS OF NZ GEODETIC DATUM MT EDEN 2000. LEVELS IN TERMS OF THE NEW ZEALAND VERTICAL DATUM 2016.
3. IT IS THE CONTRACTORS RESPONSIBILITY TO LOCATE ALL SERVICES THAT MAY BE AFFECTED BY THEIR OPERATIONS.

LEGEND

PR WETLAND FGL

Rev	Description	By	Date
A	RESOURCE CONSENT	AO	02/2025
Survey	MAVEN		11/2024
Design	AO		12/2024
Drawn	OE		01/2025
Checked	LC		02/2025

M Maven Associates
 09 571 0050
 info@maven.co.nz
 www.maven.co.nz
 5 Owens Road, Epsom
 Auckland 1023

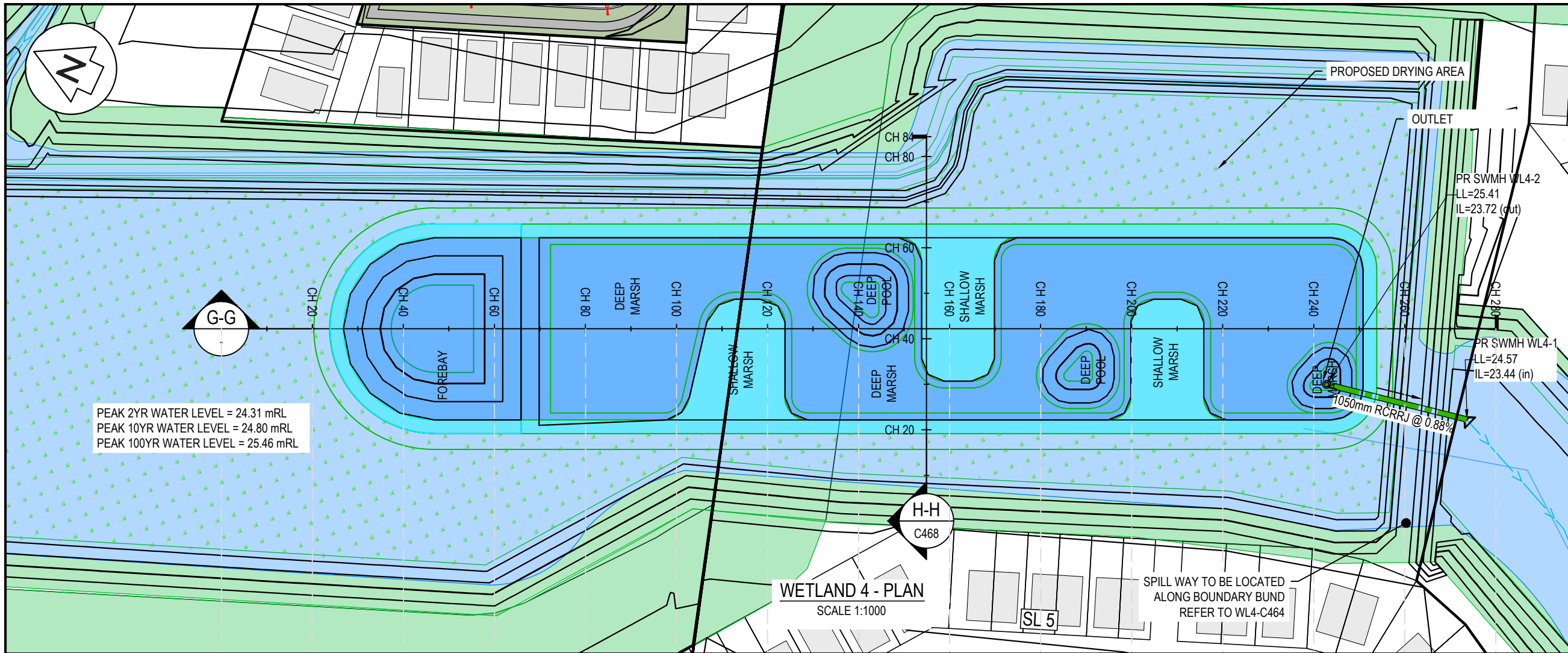
Project
**SUNFIELD
 SUBDIVISION
 AUCKLAND
 FOR SUNFIELD
 DEVELOPMENTS LTD.**

Title
**PROPOSED WETLANDS -
 WETLAND 4
 PLAN & LONGSECTION**

Project no.	215010
Scale	AS SHOWN
Cad file	215010-M-C460-SW WETLANDS.DWG
Drawing no.	M-C4612
Rev	A

RESOURCE CONSENT

DATE: 2/25 FILEPATH: F:\M\PROJECTS\215010 - SUNFIELD\02\25010-M-C460-SW WETLANDS.DWG



- NOTES
1. ALL WORKS TO BE IN ACCORDANCE WITH AUCKLAND COUNCIL STANDARDS.
 2. COORDINATES IN TERMS OF NZ GEODETIC DATUM MT EDEN 2000. LEVELS IN TERMS OF THE NEW ZEALAND VERTICAL DATUM 2016.
 3. IT IS THE CONTRACTORS RESPONSIBILITY TO LOCATE ALL SERVICES THAT MAY BE AFFECTED BY THEIR OPERATIONS.

LEGEND
PR WETLAND FGL

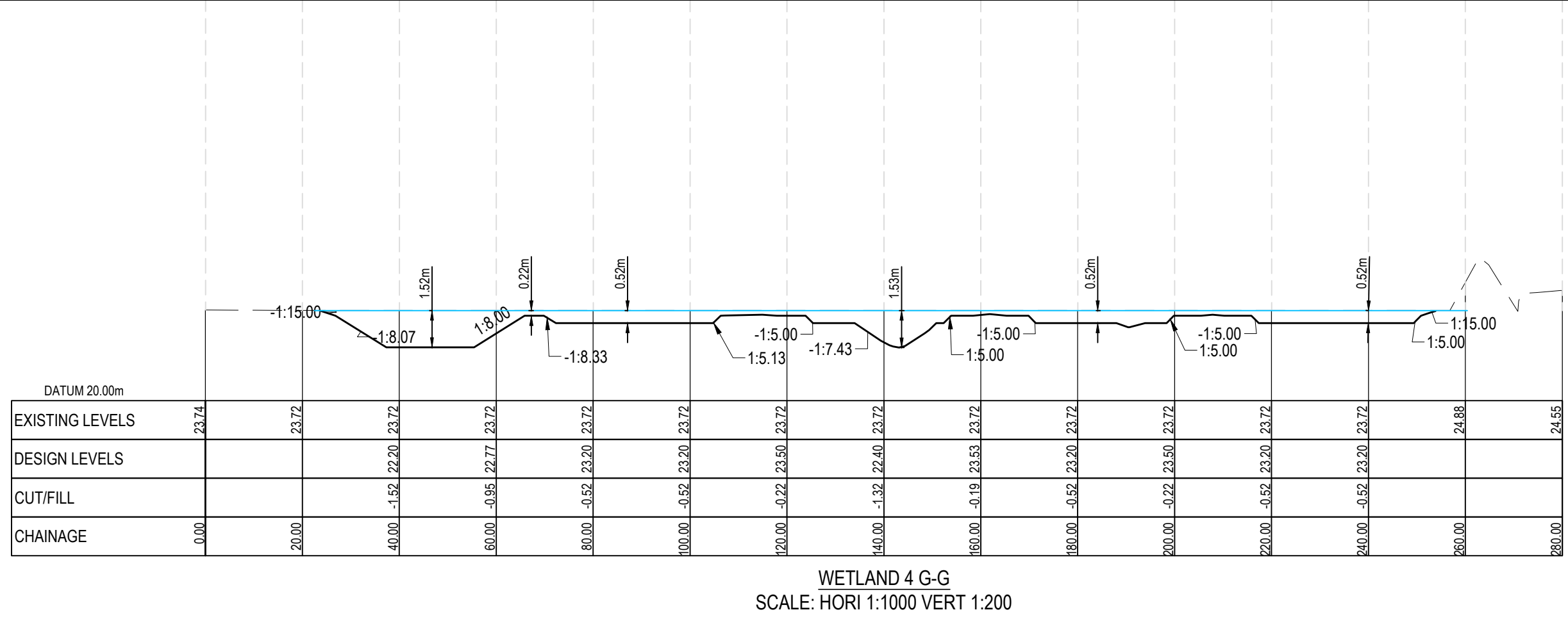
A	RESOURCE CONSENT	AO	02/2025
Rev	Description	By	Date
Survey	MAVEN		11/2024
Design	AO		12/2024
Drawn	OE		01/2025
Checked	LC		02/2025

Maven Associates
09 571 0050
info@maven.co.nz
www.maven.co.nz
5 Owens Road, Epsom
Auckland 1023

Project
**SUNFIELD
SUBDIVISION
AUCKLAND
FOR SUNFIELD
DEVELOPMENTS LTD.**

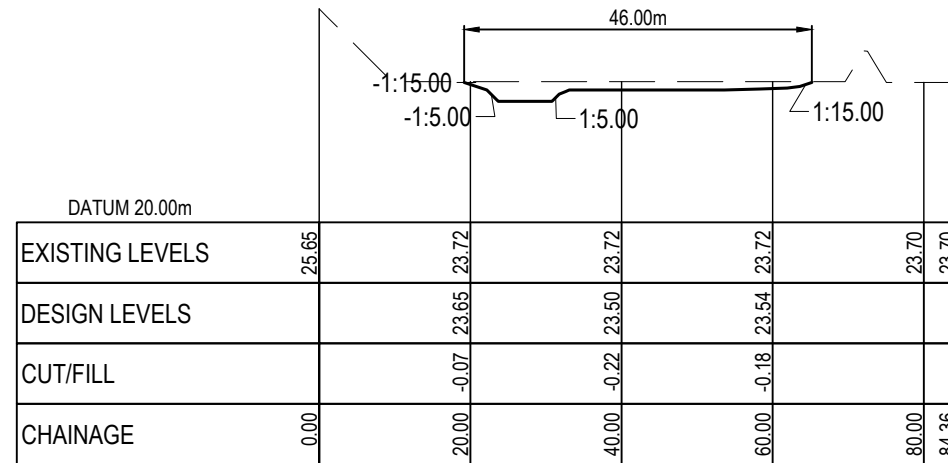
Title
**PROPOSED WETLANDS -
WETLAND 4
PLAN & LONGSECTION**

Project no.	215010
Scale	AS SHOWN
Cad file	215010-M-C460_DWG
Drawing no.	M-C4613
Rev	A



RESOURCE CONSENT

DATE: 2/25 FILEPATH: F:\MVEN\PROJECTS\215010 - SUNFIELD\DWG\PRODUCTION\MASTER\PLANNING\215010AC460_DWG



WETLAND 4 H-H
SCALE: HORI 1:1000 VERT 1:200

- NOTES
1. ALL WORKS TO BE IN ACCORDANCE WITH AUCKLAND COUNCIL STANDARDS.
 2. COORDINATES IN TERMS OF NZ GEODETIC DATUM MT EDEN 2000. LEVELS IN TERMS OF THE NEW ZEALAND VERTICAL DATUM 2016.
 3. IT IS THE CONTRACTORS RESPONSIBILITY TO LOCATE ALL SERVICES THAT MAY BE AFFECTED BY THEIR OPERATIONS.

LEGEND
PR WETLAND FGL

Rev	Description	By	Date
A	RESOURCE CONSENT	AO	02/2025

M Maven Associates
 09 571 0050
 info@maven.co.nz
 www.maven.co.nz
 5 Owens Road, Epsom
 Auckland 1023

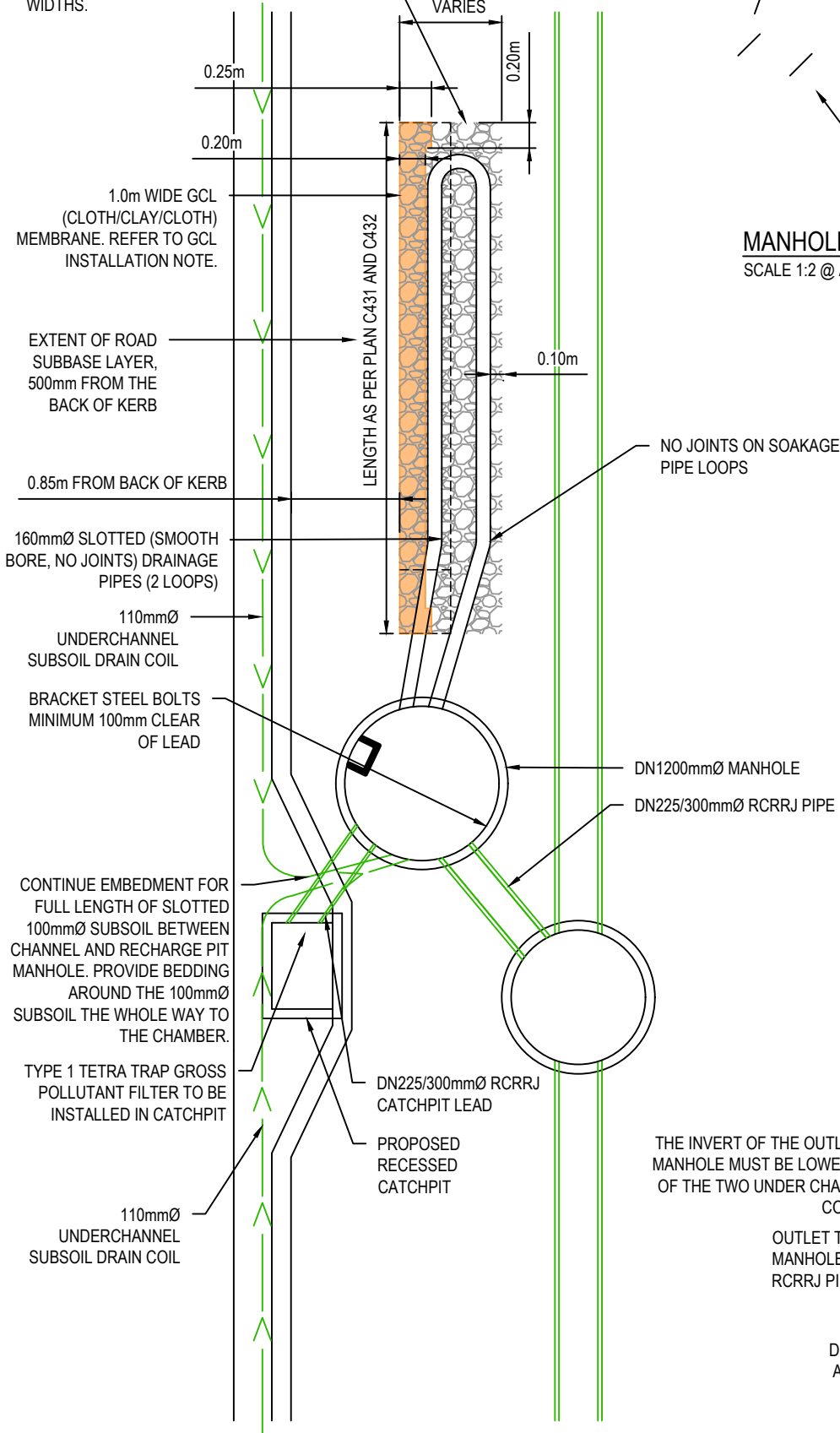
Project
**SUNFIELD
 SUBDIVISION
 AUCKLAND
 FOR SUNFIELD
 DEVELOPMENTS LTD.**

Title
**PROPOSED WETLANDS -
 WETLAND 4
 CROSS SEC. & OUTLET**

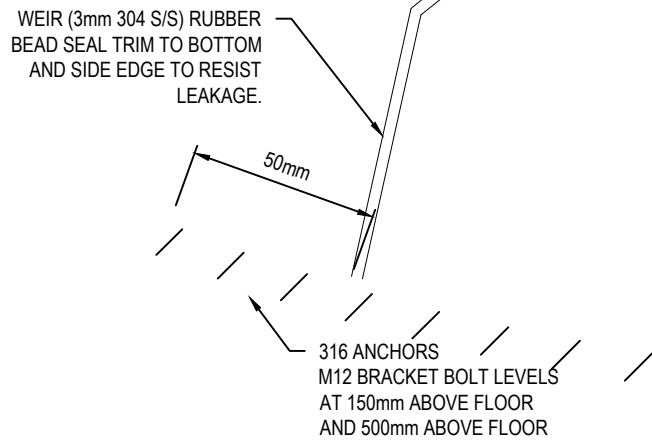
Project no.	215010
Scale	AS SHOWN
Cad file	215010-M-C460-SW WETLANDS.DWG
Drawing no.	M-C4614
Rev	A

RESOURCE CONSENT

PROPOSED RECHARGE PIT WITH 20/50 SCORIA OR EQUIVALENT FOR DRAINAGE MATERIAL. RECHARGE PITS TO BE LINED WITH GEOTEXTILE CLOTH. REFER TO DWG C431 AND C432 FOR SPECIFIC RECHARGE PIT LENGTHS AND WIDTHS.



PROPOSED RECHARGE PIT DETAILS
SCALE 1:50 @ A3



MANHOLE WEIR AND BRACKET DETAIL
SCALE 1:2 @ A3

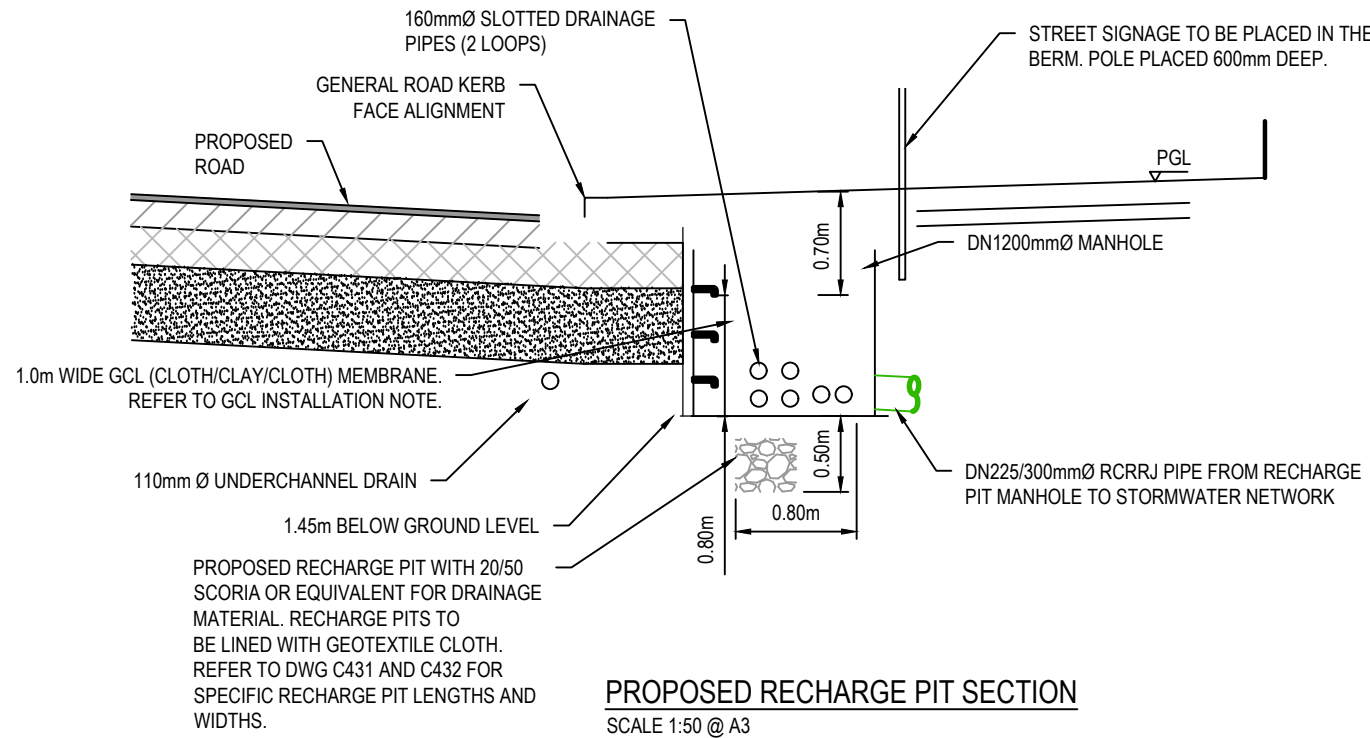
GCL INSTALLATION:

1.0m WIDE GCL (CLOTH/CLAY/CLOTH) MEMBRANE AS STRIP TO PREVENT HIGH FLOW RATES FROM RECHARGE PIT TO ROAD SUBBASE.

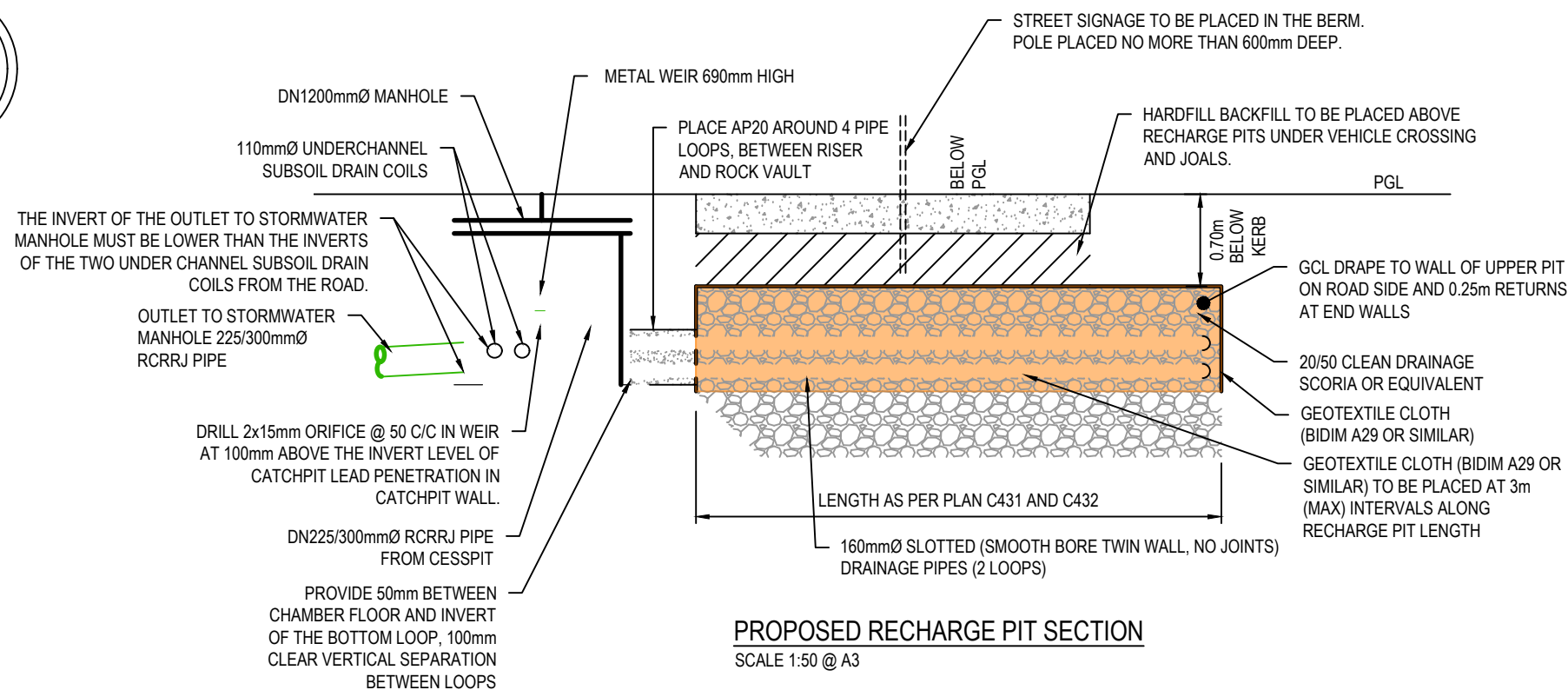
INSTALL GCL MEMBRANE BEFORE PLACING THE SCORIA'S BIDIM WRAP.

LAY 0.8m HIGH VERTICAL GCL WALL AGAINST SOIL FACE ALONG FULL PIT LENGTH ON THE ROAD SIDE OF UPPER PIT AND RETURN A MINIMUM OF 0.25m AROUND END WALLS OF UPPER PIT. BOTTOM EDGE OF GCL TO FINISH LEVEL WITH THE FLOOR OF THE UPPER PIT. ONCE THE ROCK FILL IS COMPLETED AND THE SCORIA'S BIDIM WRAP HAS BEEN LAID BACK DOWN OVER THE TOP OF THE ROCK, RETURN THE EXCESS GCL (0.20m) ACROSS THE TOP BIDIM LAYER.

INSTALL THE GCL SLIGHTLY LOOSE TO ENCOURAGE CONFORMING TO SOIL SURFACE.



PROPOSED RECHARGE PIT SECTION
SCALE 1:50 @ A3



PROPOSED RECHARGE PIT SECTION
SCALE 1:50 @ A3

- NOTES
- ALL WORKS TO BE IN ACCORDANCE WITH AUCKLAND COUNCIL STANDARDS.
 - COORDINATES IN TERMS OF NZ GEODETIC DATUM MT EDEN 2000. LEVELS IN TERMS OF THE AUCKLAND VERTICAL DATUM 1946.
 - IT IS THE CONTRACTORS RESPONSIBILITY TO LOCATE ALL SERVICES THAT MAY BE AFFECTED BY THEIR OPERATIONS.
 - PIPE BEDDING: 0 - 10% GRANULAR BEDDING, 10 - 20% WEAK CONCRETE BEDDING GREATER THAN 20% WEAK CONCRETE BEDDING (7MPA PLUS ANTI SCOUR BLOCKS AT 6m CRS).
 - EACH CONNECTION SHALL BE MARKED BY A 50mmx50mm TREATED PINE STAKE EXTENDING 600mm ABOVE GROUND LEVEL WITH THE TOP PAINTED. THIS MARKER POST SHALL BE PLACED ALONGSIDE A TIMBER MARKER INSTALLED AT THE TIME OF PIPELAYING AND EXTENDING FROM THE CONNECTION TO 150mm BELOW FINISHED GROUND LEVEL. CONNECTIONS SHALL BE ACCURATELY INDICATED ON "AS BUILT" PLANS.
 - APPROVED HARDFILL IS TO BE USED IN BACKFILLING OF ALL ROAD CROSSINGS AND VEHICLE CROSSINGS TO COUNCIL STANDARDS.
 - HEAVY DUTY MANHOLE LIDS AND FRAMES TO BE USED IN TRAFFICKED AREAS.
 - ALL MANHOLES ARE TO BE 1050mmØ PRECAST CONCRETE UNLESS SHOWN OTHERWISE.
 - ALL CATCHPIT LEADS SHALL HAVE MIN COVER 1.0m.
 - ALL LINES TO BE ABANDONED SHALL BE SEALED AT EACH END. TIMING OF ALL SEALING TO BE COORDINATED WITH COUNCIL STAFF.
 - ALL LOT CONNECTION TO BE MIN 100mm uPVC SN16 UNLESS SHOWN OTHERWISE.

A	RESOURCE CONSENT	RK	02/2025
Rev	Description	By	Date
Survey	SURVEYWORX		02/2021
Design	YW		11/2024
Drawn	YW		11/2024
Checked	JPL/C		02/2025

M Maven Associates
09 571 0050
info@maven.co.nz
www.maven.co.nz
5 Owens Road, Epsom
Auckland 1023

Project
**SUNFIELD DEVELOPMENT
ARDMORE, AUCKLAND
MASTERPLANNING
FOR SUNFIELD
DEVELOPMENTS LIMITED**

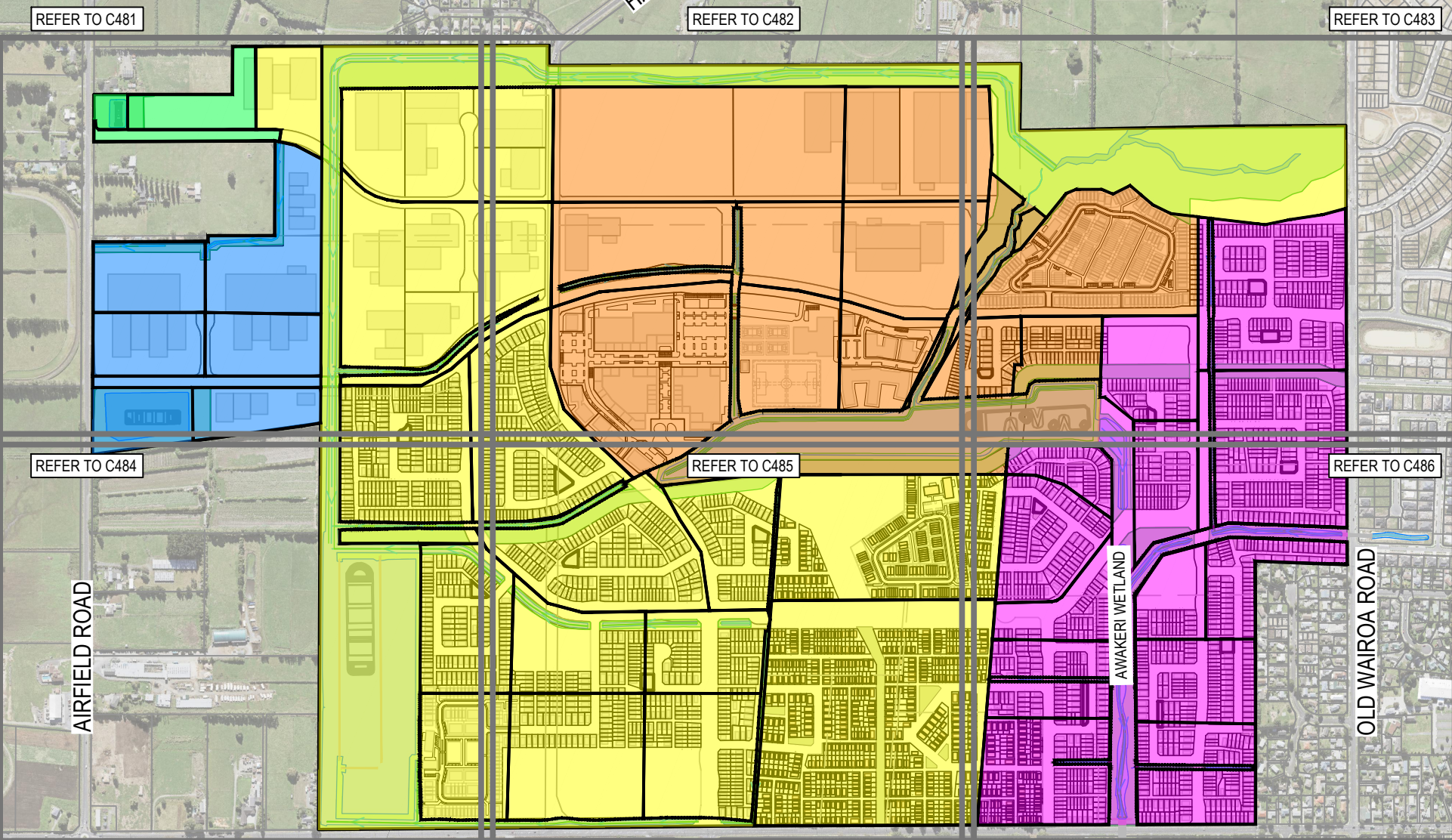
Title
**PROPOSED PUBLIC
ROAD STORMWATER
RECHARGE PIT DETAIL**

Project no.	215010
Scale	AS SHOWN
Cad file	215010-M-C470.DWG
Drawing no.	M-C470
Rev	A

RESOURCE CONSENT



- NOTES
1. ALL WORKS TO BE IN ACCORDANCE WITH AUCKLAND COUNCIL STANDARDS.
 2. COORDINATES IN TERMS OF NZ GEODETIC DATUM MT EDEN 2000. LEVELS IN TERMS OF THE AUCKLAND VERTICAL DATUM 2016.
 3. PLEASE REFER TO MAVEN ASSOCIATES FLOOD MODELING REPORT REV G FOR FLOOD MODELLING OF CATCHMENTS
 4. CATCHMENT AREAS SHOWN DO NOT INCLUDE SWALE AND POND AREAS



LEGEND

---	EX BDY
---	PR BDY
---	CATCHMENT BDY
---	CATCHMENT NUMBER
Yellow	SW POND 1 CATCHMENT
Blue	SW POND 2 CATCHMENT
Green	SW POND 3 CATCHMENT
Orange	SW POND 4 CATCHMENT
Purple	DIRECTLY TO AWAKERI WETLAND

A	RESOURCE CONSENT	YW	02/2025
Rev	Description	By	Date
Survey	SURVEYWORX		02/2021
Design	YW		11/2024
Drawn	SP		11/2024
Checked	LC		02/2025

Maven Associates
 09 571 0050
 info@maven.co.nz
 www.maven.co.nz
 5 Owens Road, Epsom
 Auckland 1023

Project
**SUNFIELD DEVELOPMENT
 ARDMORE, AUCKLAND
 MASTERPLANNING
 FOR SUNFIELD
 DEVELOPMENTS LIMITED**

Title
**PROPOSED OVERVIEW
 STORMWATER CATCHMENT
 PLAN**

Project no.	215010
Scale	1:10000 @ A3
Cad file	215010-M-C480.DWG
Drawing no.	M-C480
Rev	A

RESOURCE CONSENT

DATE: 27/02 FILE PATH: F:\MAVEN\PROJECTS\SUNFIELD\03-PRODUCTION\MASTER PLAN\0215010-M-C480.DWG



STORMWATER POND 3

CATCHMENT AREA = 2.756 Ha
 MIN PWV = 181m³
 TOTAL LIVE STORAGE = 1,820 m³
 ATTENUATED OUTFLOWS
 Q₂=0.075m³/s
 Q₁₀=0.487m³/s
 Q₁₀₀=0.873m³/s

C-51
 AREA=1.933Ha
 Q₂=0.292m³/s
 Q₁₀=0.593m³/s
 Q₁₀₀=1.037m³/s

C-50
 AREA=1.729 Ha
 Q₂=0.244m³/s
 Q₁₀=0.495m³/s
 Q₁₀₀=0.846m³/s

C-58
 AREA=0.672 Ha
 Q₂=0.093m³/s
 Q₁₀=0.200m³/s
 Q₁₀₀=0.331m³/s

C-38
 AREA=7.191 Ha
 Q₂=0.963m³/s
 Q₁₀=1.947m³/s
 Q₁₀₀=3.293m³/s

C-55
 AREA=2.434 Ha
 Q₂=0.363m³/s
 Q₁₀=0.737m³/s
 Q₁₀₀=1.280m³/s

C-56
 AREA=4.019 Ha
 Q₂=0.528m³/s
 Q₁₀=1.071m³/s
 Q₁₀₀=1.801m³/s

C-37
 AREA=10.002 Ha
 Q₂=1.277m³/s
 Q₁₀=2.494m³/s
 Q₁₀₀=4.169m³/s

C-53
 AREA=2.187 Ha
 Q₂=0.328m³/s
 Q₁₀=0.667m³/s
 Q₁₀₀=1.161m³/s

C-54
 AREA=2.225 Ha
 Q₂=0.331m³/s
 Q₁₀=0.672m³/s
 Q₁₀₀=1.168m³/s

C-52
 AREA=0.799 Ha
 Q₂=0.111m³/s
 Q₁₀=0.228m³/s
 Q₁₀₀=0.394m³/s

C-57
 AREA=1.758 Ha
 Q₂=0.264m³/s
 Q₁₀=0.536m³/s
 Q₁₀₀=0.936m³/s

STORMWATER POND 2

CATCHMENT AREA = 15.538 Ha
 MIN PWV = 1,026m³
 TOTAL LIVE STORAGE = 22,290 m³
 ATTENUATED OUTFLOWS
 Q₂=0.060m³/s
 Q₁₀=0.639m³/s
 Q₁₀₀=4.142m³/s

- NOTES
1. ALL WORKS TO BE IN ACCORDANCE WITH AUCKLAND COUNCIL STANDARDS.
 2. COORDINATES IN TERMS OF NZ GEODETIC DATUM MT EDEN 2000. LEVELS IN TERMS OF THE AUCKLAND VERTICAL DATUM 2016.
 3. PLEASE REFER TO MAVEN ASSOCIATES FLOOD MODELING REPORT REV G FOR FLOOD MODELLING OF CATCHMENTS
 4. CATCHMENT AREAS SHOWN DO NOT INCLUDE SWALE AND POND AREAS

LEGEND

---	EX BDY
---	PR BDY
---	CATCHMENT BDY
---	CATCHMENT NUMBER
---	SW POND 1 CATCHMENT
---	SW POND 2 CATCHMENT
---	SW POND 3 CATCHMENT
---	SW POND 4 CATCHMENT
---	DIRECTLY TO AWAKERI WETLAND

A	RESOURCE CONSENT	YW	02/2025
Rev	Description	By	Date
	Survey	SURVEYWORX	02/2021
	Design	YW	11/2024
	Drawn	SP	11/2024
	Checked	LC	02/2025

Project
**SUNFIELD DEVELOPMENT
 ARDMORE, AUCKLAND
 MASTERPLANNING
 FOR SUNFIELD
 DEVELOPMENTS LIMITED**

Title
**PROPOSED
 STORMWATER CATCHMENT
 PLAN: SHEET 1**

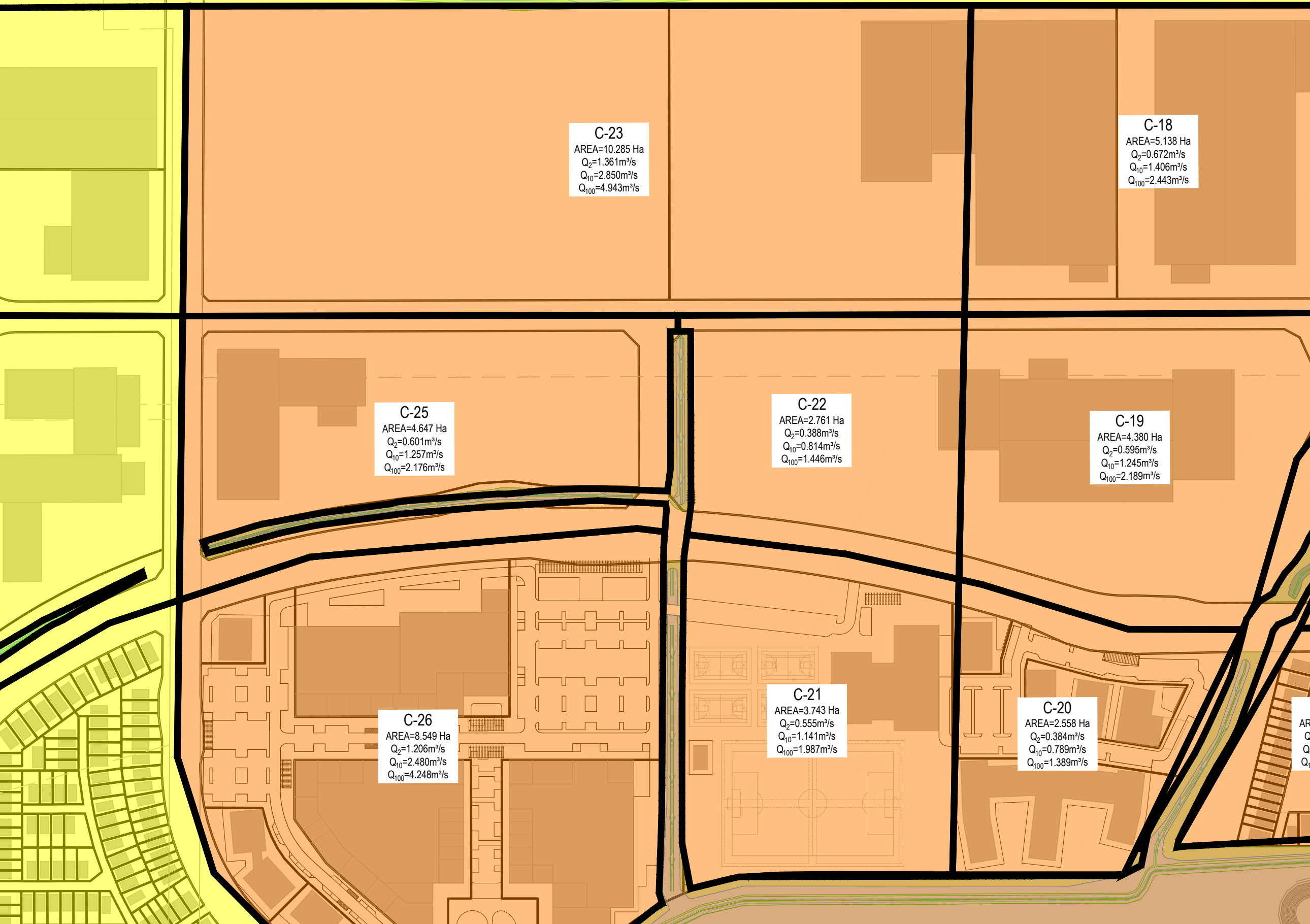
Project no.	215010
Scale	1:2500 @ A3
Cad file	215010-M-C480.DWG
Drawing no.	M-C481
Rev	A

RESOURCE CONSENT

DATE: 2/2/25 FILE PATH: F:\MAVEN\PROJECTS\215010 - SUNFIELD\DWG\3-PRODUCTION\MASTER PLAN\215010-M-C480.DWG



- NOTES
1. ALL WORKS TO BE IN ACCORDANCE WITH AUCKLAND COUNCIL STANDARDS.
 2. COORDINATES IN TERMS OF NZ GEODETIC DATUM MT EDEN 2000. LEVELS IN TERMS OF THE AUCKLAND VERTICAL DATUM 2016.
 3. PLEASE REFER TO MAVEN ASSOCIATES FLOOD MODELING REPORT REV G FOR FLOOD MODELLING OF CATCHMENTS
 4. CATCHMENT AREAS SHOWN DO NOT INCLUDE SWALE AND POND AREAS



LEGEND

	EX BDY
	PR BDY
	CATCHMENT BDY
	C-39 CATCHMENT NUMBER
	SW POND 1 CATCHMENT
	SW POND 2 CATCHMENT
	SW POND 3 CATCHMENT
	SW POND 4 CATCHMENT
	DIRECTLY TO AWAKERI WETLAND

Rev	Description	By	Date
A	RESOURCE CONSENT	YW	02/2025
Survey	SURVEYWORK		02/2021
Design	YW		11/2024
Drawn	SP		11/2024
Checked	LC		02/2025

Maven Associates
 09 571 0050
 info@maven.co.nz
 www.maven.co.nz
 5 Owens Road, Epsom
 Auckland 1023

Project
**SUNFIELD DEVELOPMENT
 ARDMORE, AUCKLAND
 MASTERPLANNING
 FOR SUNFIELD
 DEVELOPMENTS LIMITED**

Title
**PROPOSED
 STORMWATER CATCHMENT
 PLAN: SHEET 2**

Project no.	215010
Scale	1:2500 @ A3
Cad file	215010-M-C480.DWG
Drawing no.	M-C482
Rev	A

RESOURCE CONSENT
 AKLA=0.374118

DATE: 25/02 FILE PATH: F:\MAVEN\PROJECTS\215010 - SUNFIELD\DWG\3-PRODUCTION\MASTER PLAN\N0215010-M-C480.DWG



- NOTES
1. ALL WORKS TO BE IN ACCORDANCE WITH AUCKLAND COUNCIL STANDARDS.
 2. COORDINATES IN TERMS OF NZ GEODETIC DATUM MT EDEN 2000. LEVELS IN TERMS OF THE AUCKLAND VERTICAL DATUM 2016.
 3. PLEASE REFER TO MAVEN ASSOCIATES FLOOD MODELING REPORT REV G FOR FLOOD MODELLING OF CATCHMENTS
 4. CATCHMENT AREAS SHOWN DO NOT INCLUDE SWALE AND POND AREAS

LEGEND

	EX BDY
	PR BDY
	CATCHMENT BDY
	C-39 CATCHMENT NUMBER
	SW POND 1 CATCHMENT
	SW POND 2 CATCHMENT
	SW POND 3 CATCHMENT
	SW POND 4 CATCHMENT
	DIRECTLY TO AWAKERI WETLAND

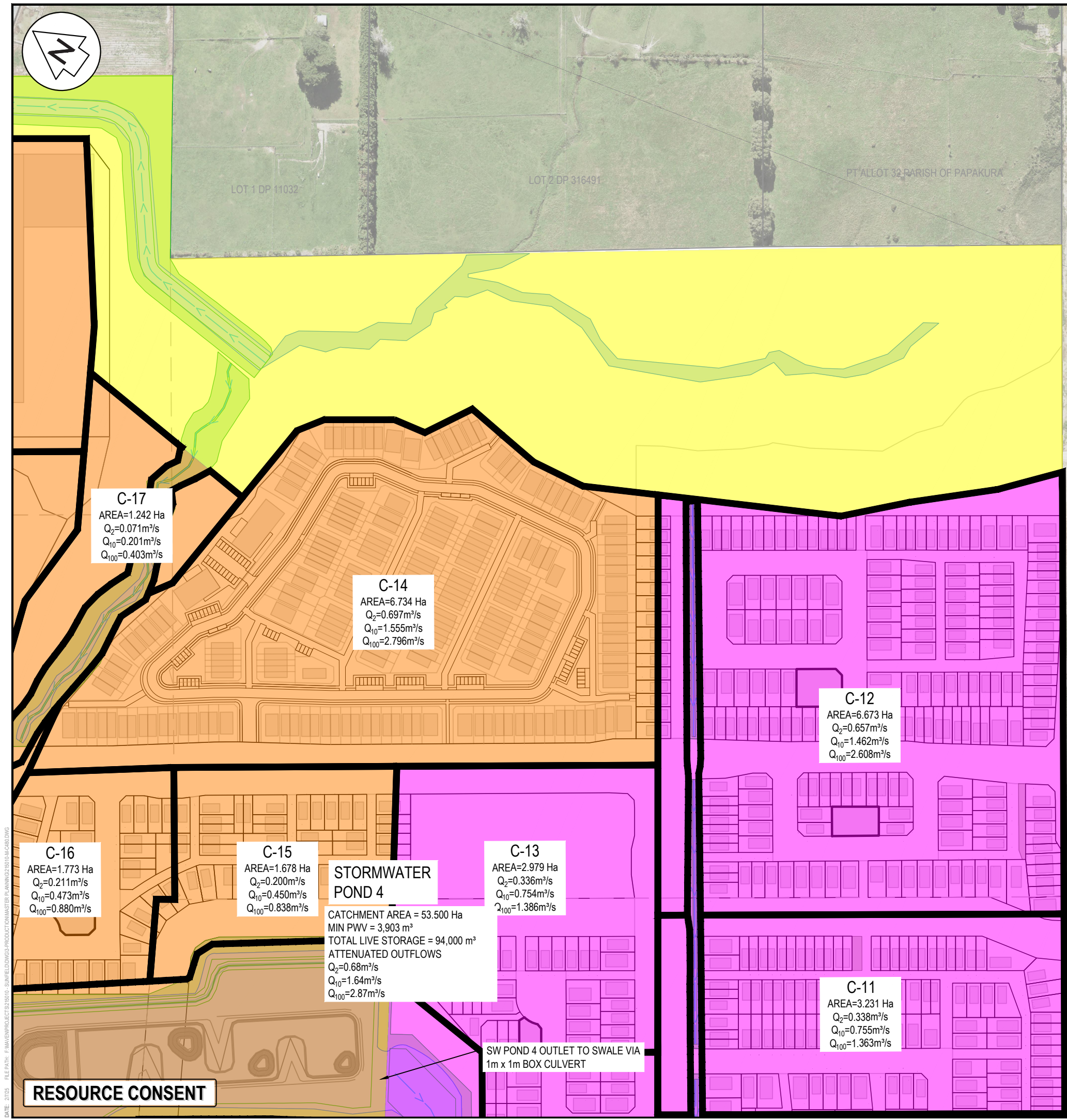
A	RESOURCE CONSENT	YW	02/2025
Rev	Description	By	Date
	Survey	SURVEYWORX	02/2021
	Design	YW	11/2024
	Drawn	SP	11/2024
	Checked	LC	02/2025

Maven Associates
 09 571 0050
 info@maven.co.nz
 www.maven.co.nz
 5 Owens Road, Epsom
 Auckland 1023

Project
**SUNFIELD DEVELOPMENT
 ARDMORE, AUCKLAND
 MASTERPLANNING
 FOR SUNFIELD
 DEVELOPMENTS LIMITED**

Title
**PROPOSED
 STORMWATER CATCHMENT
 PLAN: SHEET 3**

Project no.	215010
Scale	1:2500 @ A3
Cad file	215010-M-C480.DWG
Drawing no.	M-C483
Rev	A



C-17
 AREA=1.242 Ha
 $Q_2=0.071m^3/s$
 $Q_{10}=0.201m^3/s$
 $Q_{100}=0.403m^3/s$

C-14
 AREA=6.734 Ha
 $Q_2=0.697m^3/s$
 $Q_{10}=1.555m^3/s$
 $Q_{100}=2.796m^3/s$

C-12
 AREA=6.673 Ha
 $Q_2=0.657m^3/s$
 $Q_{10}=1.462m^3/s$
 $Q_{100}=2.608m^3/s$

C-16
 AREA=1.773 Ha
 $Q_2=0.211m^3/s$
 $Q_{10}=0.473m^3/s$
 $Q_{100}=0.880m^3/s$

C-15
 AREA=1.678 Ha
 $Q_2=0.200m^3/s$
 $Q_{10}=0.450m^3/s$
 $Q_{100}=0.838m^3/s$

**STORMWATER
 POND 4**
 CATCHMENT AREA = 53.500 Ha
 MIN PWV = 3,903 m³
 TOTAL LIVE STORAGE = 94,000 m³
 ATTENUATED OUTFLOWS
 $Q_2=0.68m^3/s$
 $Q_{10}=1.64m^3/s$
 $Q_{100}=2.87m^3/s$

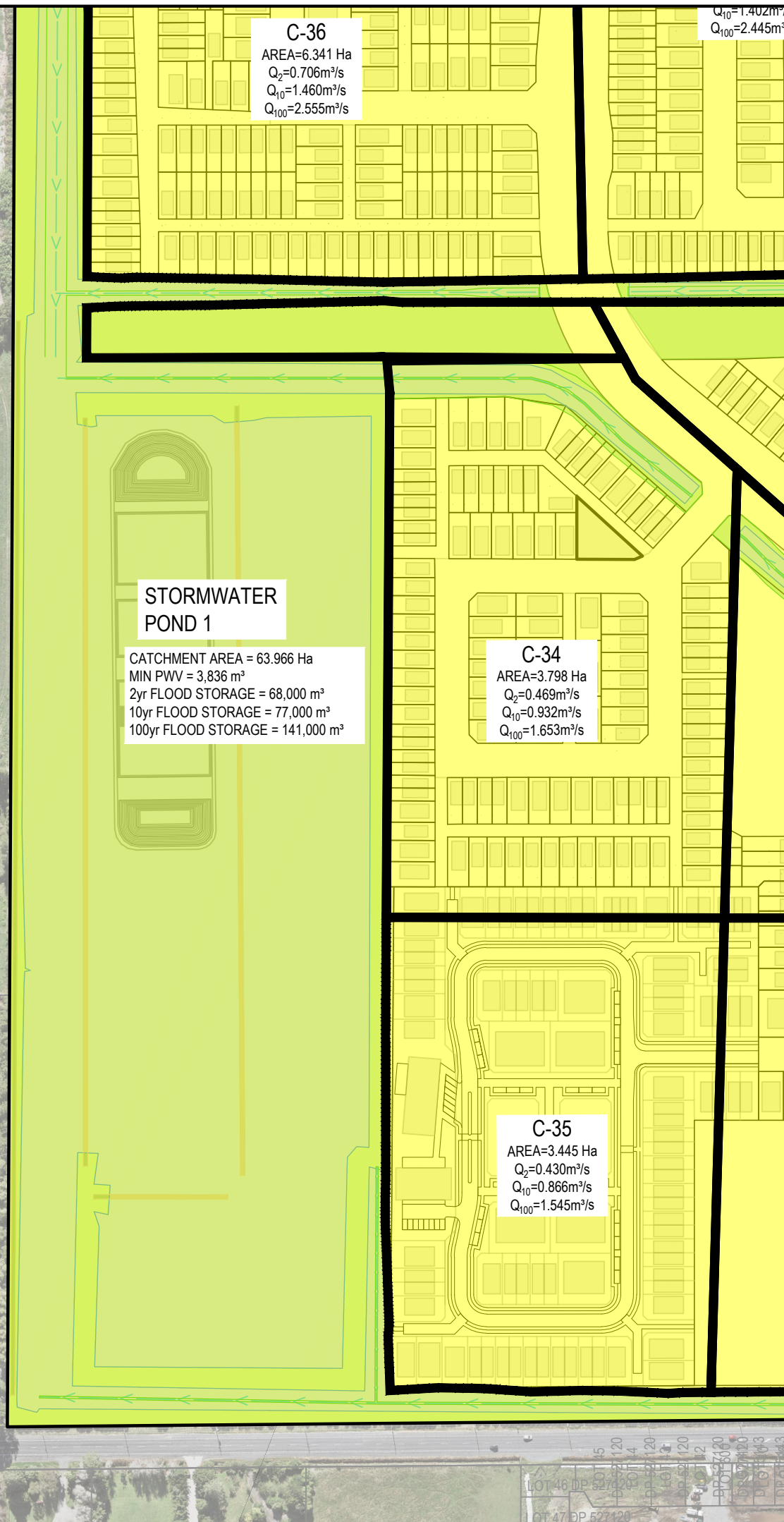
C-13
 AREA=2.979 Ha
 $Q_2=0.336m^3/s$
 $Q_{10}=0.754m^3/s$
 $Q_{100}=1.386m^3/s$

C-11
 AREA=3.231 Ha
 $Q_2=0.338m^3/s$
 $Q_{10}=0.755m^3/s$
 $Q_{100}=1.363m^3/s$

SW POND 4 OUTLET TO SWALE VIA
 1m x 1m BOX CULVERT

RESOURCE CONSENT

DATE: 2/2/25 FILE PATH: F:\Maven\PROJECTS\SUNFIELD\03-PRODUCTION\MASTER PLAN\NIN\215010-M-C480.DWG



C-36
 AREA=6.341 Ha
 $Q_2=0.706m^3/s$
 $Q_{10}=1.460m^3/s$
 $Q_{100}=2.555m^3/s$

$Q_{10}=1.402m^3/s$
 $Q_{100}=2.445m^3/s$

STORMWATER POND 1
 CATCHMENT AREA = 63.966 Ha
 MIN PWV = 3,836 m³
 2yr FLOOD STORAGE = 68,000 m³
 10yr FLOOD STORAGE = 77,000 m³
 100yr FLOOD STORAGE = 141,000 m³

C-34
 AREA=3.798 Ha
 $Q_2=0.469m^3/s$
 $Q_{10}=0.932m^3/s$
 $Q_{100}=1.653m^3/s$

C-35
 AREA=3.445 Ha
 $Q_2=0.430m^3/s$
 $Q_{10}=0.866m^3/s$
 $Q_{100}=1.545m^3/s$

- NOTES
1. ALL WORKS TO BE IN ACCORDANCE WITH AUCKLAND COUNCIL STANDARDS.
 2. COORDINATES IN TERMS OF NZ GEODETIC DATUM MT EDEN 2000. LEVELS IN TERMS OF THE AUCKLAND VERTICAL DATUM 2016.
 3. PLEASE REFER TO MAVEN ASSOCIATES FLOOD MODELING REPORT REV G FOR FLOOD MODELLING OF CATCHMENTS
 4. CATCHMENT AREAS SHOWN DO NOT INCLUDE SWALE AND POND AREAS

LEGEND

---	EX BDY
---	PR BDY
---	CATCHMENT BDY
---	CATCHMENT NUMBER
---	SW POND 1 CATCHMENT
---	SW POND 2 CATCHMENT
---	SW POND 3 CATCHMENT
---	SW POND 4 CATCHMENT
---	DIRECTLY TO AWAKERI WETLAND

Rev	Description	By	Date
A	RESOURCE CONSENT	YW	02/2025
Survey	SURVEYWORX		02/2021
Design	YW		11/2024
Drawn	SP		11/2024
Checked	LC		02/2025

M Maven Associates
 09 571 0050
 info@maven.co.nz
 www.maven.co.nz
 5 Owens Road, Epsom
 Auckland 1023

Project
**SUNFIELD DEVELOPMENT
 ARDMORE, AUCKLAND
 MASTERPLANNING
 FOR SUNFIELD
 DEVELOPMENTS LIMITED**

Title
**PROPOSED
 STORMWATER CATCHMENT
 PLAN: SHEET 4**

Project no.	215010
Scale	1:2500 @ A3
Cad file	215010-M-C480.DWG
Drawing no.	M-C484
Rev	A

RESOURCE CONSENT

DATE: 2/2/25 FILE PATH: F:\MAVEN\PROJECTS\215010 - SUNFIELD\DWG\PRODUCTION\MASTER PLAN\N\0215010-M-C480.DWG