



NOTES:

All plans are to be read in conjunction with Awa Architecture Plan Set and Maven Civil Plan Set.

Prior to excavating tree pits and planting specimen trees, confirm on site there are no clashes with underground services. Notify the Landscape Architect if any clashes are likely to occur.

All trees shall be at least 1.5m high at the time of planting and once established must be maintained at a height of at least 3m thereafter (with the exception of any proposed fruit trees)

Code	Botanical Name	Common Name	Grade	Spacing
Specimen Trees - Streets				
	<i>Alectryon excelsus</i>	titoki	100L	Marked
	<i>Knightia excelsa</i>	rewarewa	100L	Marked
	<i>Podocarpus totara 'Aurea'</i>	golden totara	100L	Marked
	<i>Quercus rubra</i>	red oak	80L	Marked
	<i>Sophora microphylla</i>	kōwhai	80L	Marked
	<i>Vitex lucens</i>	pūriri	80L	Marked
AP1 Amenity Planting Mix 1				
	<i>Caprosma 'Hawera'</i>	groundcover Coprosma	2L	1m
	<i>Dianella nigra</i>	turutu	2L	1m
	<i>Hebe 'Wiri Mist'</i>	shrubby Veronica	2L	1m
	<i>Phormium cookianum</i>	wharariki	2L	1m
	<i>Rhopalostylis sapida</i>	nikau pal	45L	Marked
AP2 Amenity Planting Mix 2				
	<i>Caprosma 'Black Cloud'</i>	mirror bush	2L	1m
	<i>Dianella nigra</i>	turutu	2L	1m
	<i>Muehlenbeckia axillaris</i>	pohuehue	2L	1m
	<i>Phormium 'Dwarf Green'</i>	dwarf mountain flax	2L	1m
IP Island Planting Mix				
	<i>Carex comans 'Frosted Curls'</i>	frosted curl grass	2L	1m
	<i>Muehlenbeckia axillaris</i>	pohuehue	2L	1m
EP1 Edge Planting Mix 1				
	<i>Carex comans 'Frosted Curls'</i>	frosted curl grass	2L	1m
	<i>Caprosma repens 'Taiko'</i>	pohuehue	2L	1m
	<i>Hebe 'Wiri Mist'</i>	shrubby Veronica	2L	1m
	<i>Rhopalostylis sapida</i>	nikau pal	45L	Marked
EP2 Edge Planting Mix 2				
	<i>Arthropodium cirratum</i>	rengarenga lily	2L	1m
	<i>Caprosma 'Poor Knights'</i>	taupata	2L	1m
	<i>Machaerina sinclairii</i>	pepepe	2L	1m
BP1 Buffer Planting Mix 1				
	<i>Blechnum novae-zelandiae</i>	kiokio	2L	0.75m
	<i>Machaerina sinclairii</i>	pepepe	2L	0.75m
	<i>Melicthus crassifolius</i>	thick-leaved Mahoe	2L	0.75m
	<i>Pimelea prostrata</i>	New Zealand daphne	2L	0.75m
BP2 Buffer Planting Mix 2				
	<i>Anemanthele lessoniana</i>	pepepe	2L	0.75m
	<i>Arthropodium cirratum</i>	rengarenga lily	2L	0.75m
	<i>Caprosma 'Hawera'</i>	groundcover Coprosma	2L	0.75m
	<i>Caprosma 'Poor Knights'</i>	taupata	2L	0.75m
Name Specification				
Hardscape Surfaces & Elements				
A. Commercial Signage		By Others		
B. Timber platform (custom)		450mm High, Hardwood timber slats with black powdercoated laster cut		
C. Hinuera Stone features		Varied sizes (750mm min. diameter)		
D. Pou whenua (by others)		TBC, Indicative locations only		
E. & F. Exposed aggregate concrete selections		1. Standard concrete with Firth 'Mountain Burst' aggregate, exposed aggregate finish AND		
- Pedestrian		2. Standard concrete with Firth 'Manorfield' aggregate, exposed aggregate finish		
G. Hinuera pavers (or etched pattern)		Hinuera Stone paving, various sizes		
H. Standard concrete - Pedestrian & Vehicular		Standard concrete, 4kg black oxide per m3, broom finish		
J. Asphalt		By others		
Q. Timber bollards		125 x 125mm, 900mm length, angle top with black collar		
Lawn		PGG Wrightson DuraVeg® Berm Mix		
Hoggin Limestone		Hoggin Limestone Gap 6		
Bark mulch		Cambium bark mulch		



LEGEND

SpecimenTrees w/ Bark Mulch

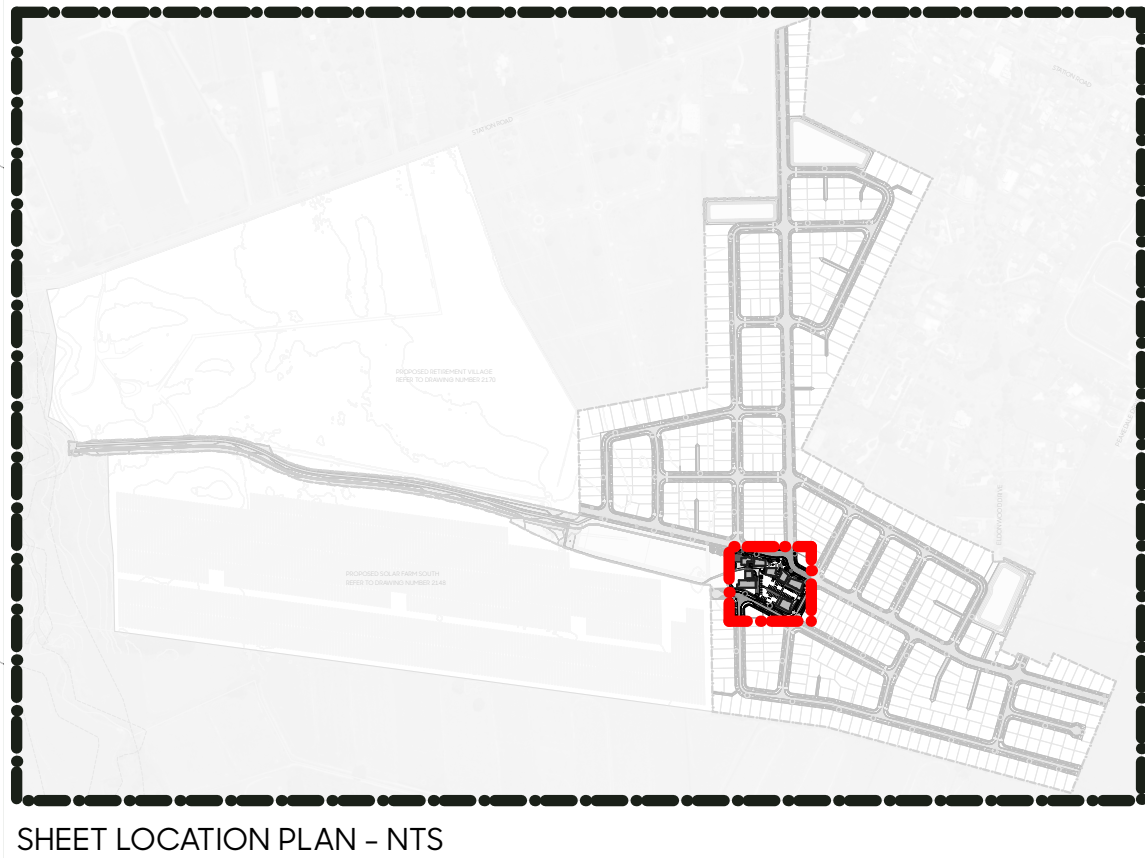
Lawn

Standard Concrete

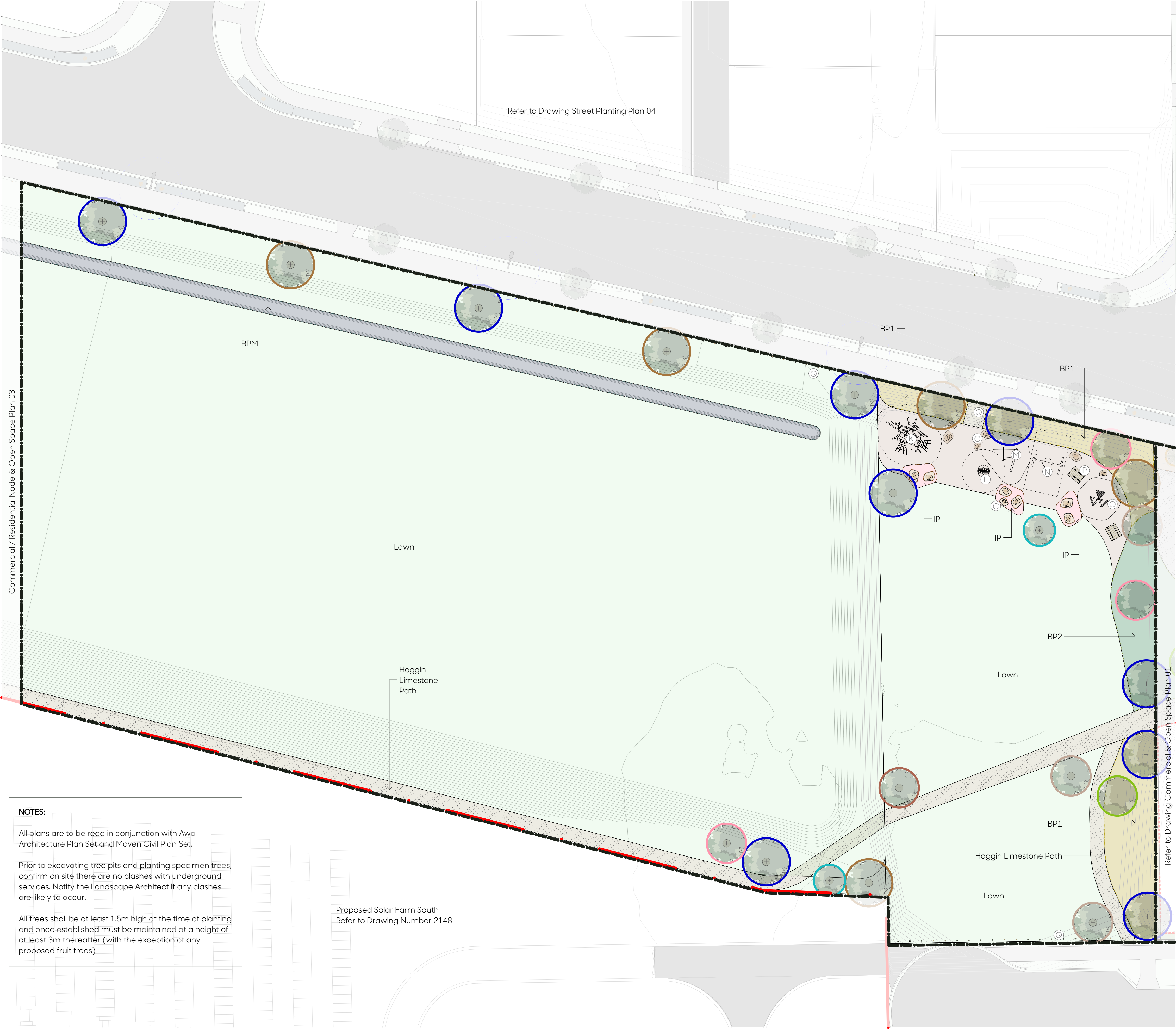
Concrete Firth 'Mountain Burst'

Concrete Firth 'Manorfield'

Hoggin Limestone



SHEET LOCATION PLAN - NTS




NOTES:

All plans are to be read in conjunction with Awa Architecture Plan Set and Maven Civil Plan Set.

Prior to excavating tree pits and planting specimen trees, confirm on site there are no clashes with underground services. Notify the Landscape Architect if any clashes are likely to occur.

All trees shall be at least 1.5m high at the time of planting and once established must be maintained at a height of at least 3m thereafter (with the exception of any proposed fruit trees)

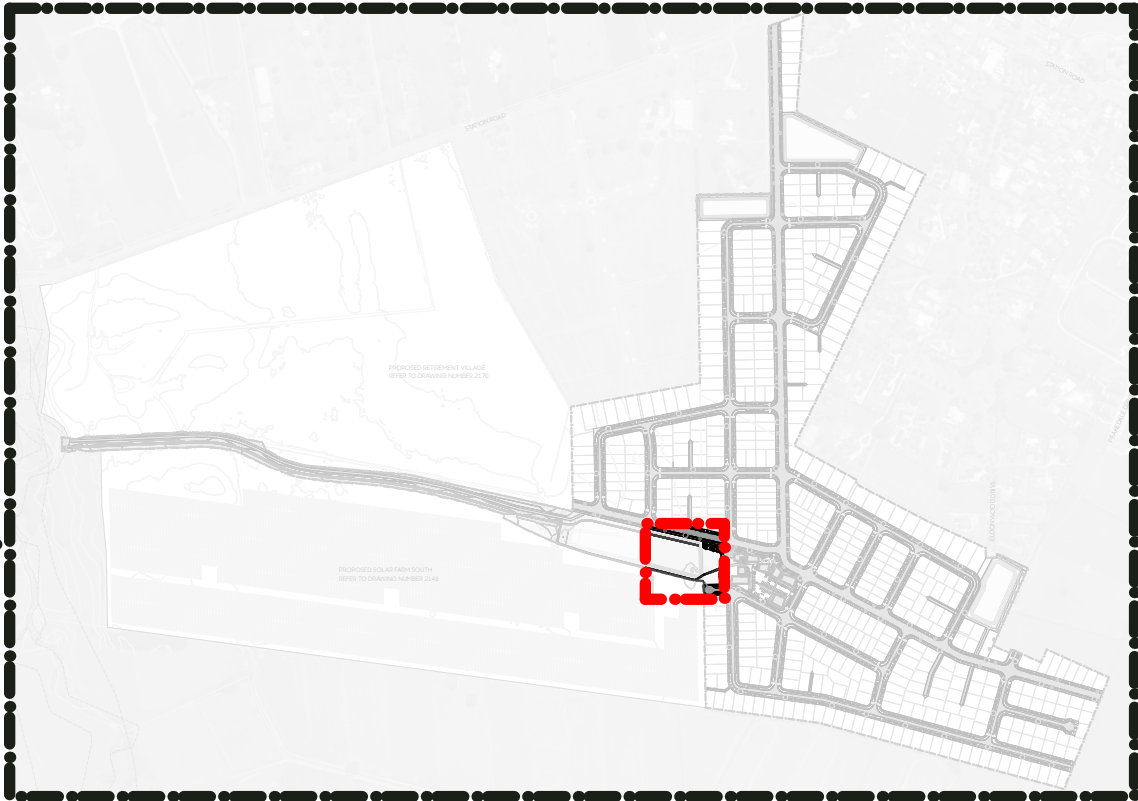
Code	Botanical Name	Common Name	Grade	Spacing
Specimen Trees - Streets				
	<i>Alectryon excelsus</i>	titoki	100L	Marked
	<i>Knightia excelsa</i>	rewarewa	100L	Marked
	<i>Podocarpus totara 'Aurea'</i>	golden totara	100L	Marked
	<i>Quercus rubra</i>	red oak	80L	Marked
	<i>Sophora microphylla</i>	kowhai	80L	Marked
	<i>Vitex lucens</i>	pūriri	80L	Marked
IP	Island Planting Mix			
	<i>Carex comans 'Frosted Curly'</i>	frosted curl grass	2L	1m
	<i>Muehlenbeckia axillaris</i>	pohuehue	2L	1m
BP1	Buffer Planting Mix 1			
	<i>Blechnum novae-zelandiae</i>	kiokio	2L	0.75m
	<i>Machaerina sinclairii</i>	pepepe	2L	0.75m
	<i>Melicytus crassifolius</i>	thick-leaved Mahoe	2L	0.75m
	<i>Pimelea prostrata</i>	New Zealand daphne	2L	0.75m
BP2	Buffer Planting Mix 2			
	<i>Anemanthele lessoniana</i>	pepepe	2L	0.75m
	<i>Arthropodium cirratum</i>	rengarenga lily	2L	0.75m
	<i>Coprosma 'Hawera'</i>	groundcover Coprosma	2L	0.75m
	<i>Coprosma 'Poor Knights'</i>	taupata	2L	0.75m
BPM	Basin Planting Mix			
	<i>Apodasmia similis</i>	ioioi	2L	0.75m
	<i>Blechnum novae-zelandiae</i>	kiokio	2L	0.75m
	<i>Carex secta</i>	pūrei	2L	0.75m
	<i>Coprosma acerosa</i>	sand Coprosma	2L	0.75m
	<i>Corokia cotoneaster</i>	korakio	2L	0.75m
	<i>Dicksania squarrosa</i>	wheki	10L	1m
	<i>Muehlenbeckia complexa</i>	pohuehue	2L	0.75m
	<i>Phormium cookianum</i>	wharariki	2L	0.75m
	<i>Pseudopanax crassifolius</i>	horoea	10L	1m
Name		Specification		
Hardscape Surfaces & Elements				
A. Commercial Signage		By Others		
B. Timber platform (custom)		450mm High, Hardwood timber slats with black powdercoated luster cut		
C. Hinuera Stone features		Varied sizes (750mm min. diameter)		
D. Pou whenua (by others)		TBC, Indicative locations only		
E. & F. Exposed aggregate concrete selections - Pedestrian		1. Standard concrete with Firth 'Mountain Burst' aggregate, exposed aggregate finish AND 2. Standard concrete with Firth 'Manorfield' aggregate, exposed aggregate finish		
G. Hinuera pavers (or etched pattern)		Hinuera Stone paving, various sizes		
H. Standard concrete - Pedestrian & Vehicular		Standard concrete, 4kg black oxide per m3, broom finish		
J. Asphalt		By others		
K. Wobbly Wood Ema Climbing Tree		By Playground Centre		
L. Wobbly Wood Family Carousel		By Playground Centre		
M. Twig Stack350		By Playground Centre		
N. Flying Saucer - Wobbly Wood Single Frame		By Playground Centre		
O. Wobbly Wood Teepee		By Playground Centre		
P. Parkvale Pedestal Table Setting		By Urban Effects or similar		
Q. Timber bollards		125 x 125mm, 900mm length, angle top with black collar		
Lawn		PGG Wrightson DuraVeg® Berm Mix		
Hoggin Limestone		Hoggin Limestone Gap 6		
Bark mulch		Cambium bark mulch		
Playground mulch		Engineered wood fibre mulch compliant with NZS 5828:2015		

SPECIMEN TREES



LEGEND

- SpecimenTrees w/ Bark Mulch
- Hoggin Limestone
- Lawn
- Playground Bark
- Timber Bollards



SHEET LOCATION PLAN - NTS