



NOTES:
Confirm set out of all dimensions on site prior to commencing work.

Do not scale off of drawings.

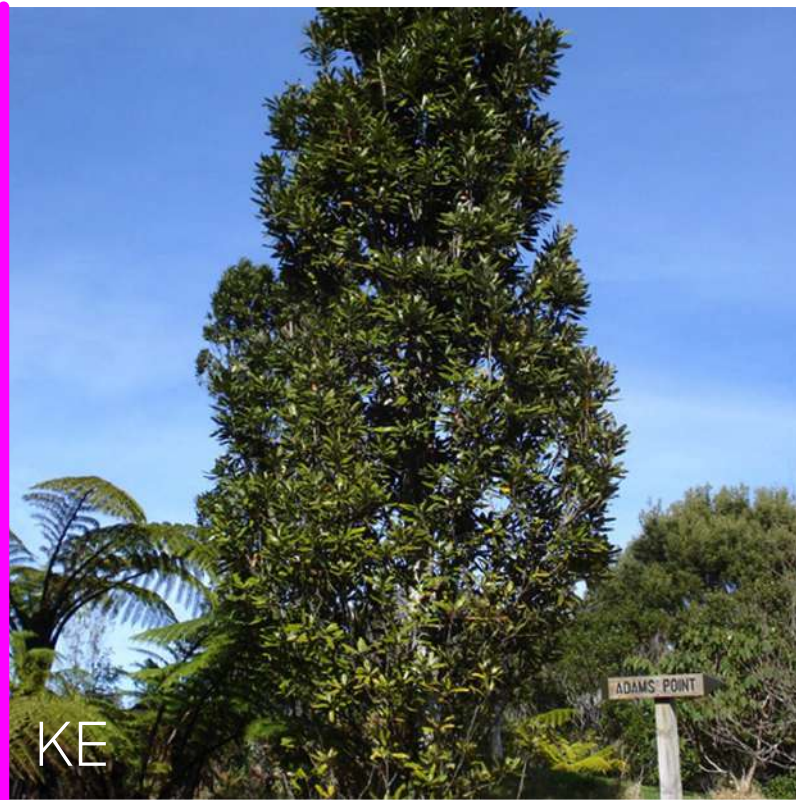
All drawings are in mm (unless specified)

All drawings are to be read in conjunction with Maven Civil plan set.

PLANT PALETTE



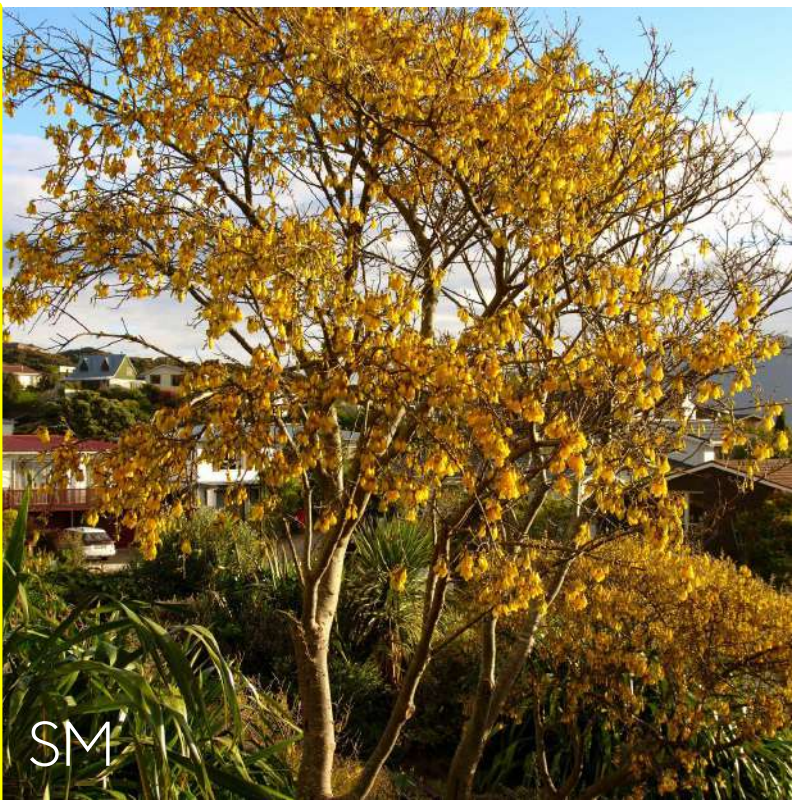
Dacrycarpus dacrydioides



Knightia excelsa



Laurelia novae-zelandiae



Sophora microphylla

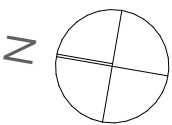
LEGEND
— Site Boundary

Code	Botanical Name	Common Name	Grade	Spacing	HxW Mature
	Tall Specimen Trees				
DD	<i>Dacrycarpus dacrydioides</i>	kahikatea	45L	as shown	50 x 5m
KE	<i>Knightia excelsa</i>	rewarewa	45L	as shown	15 x 3m
LN	<i>Laurelia novae-zelandiae</i>	pukatea	45L	as shown	10 x 4m
SM	<i>Sophora microphylla</i>	kōwhai	45L	as shown	8 x 3m
SZ	Screening Mix Zone – Max 5m High				
	5% <i>Austroderia fulvida</i>	toetoe	3L	1m	1.5 x 1.5m
	25% <i>Coprosma robusta</i>	karamu	3L	1m	5 x 4m
	10% <i>Coprosma propinqua</i>	mingimingi	3L	1m	5 x 2.5m
	5% <i>Leptospermum scoparium</i>	manuka	3L	1m	4 x 3m
	25% <i>Macropiper excelsum</i>	kawakawa	3L	1m	4 x 4m
	15% <i>Pittosporum tenuifolium</i>	kohuhu	3L	1m	5 x 3m
	5% <i>Phormium cookianum</i>	wharariki	3L	1m	1.5 x 1.5m
	10% <i>Myrsine australis</i>	red matipo	3L	1m	5 x 3m
AS	Amenity Shrub Mix Screening Zone – Under 2.5m High				
	15% <i>Astelia grandis</i>	swamp astelia	2L	1m	1.5 x 1.5m
	5% <i>Austroderia fulvida</i>	toetoe	2L	1m	1.5 x 1.5m
	15% <i>Carex virgata</i>	pukio	2L	1m	1 x 1m
	5% <i>Corokia buddleioides</i>	corokia	2L	1m	2 x 2m
	15% <i>Coprosma rhamnoides</i>	twiggy Coprosma	2L	1m	1.5 x 1m
	25% <i>Phormium cookianum</i>	wharariki	2L	1m	1.5 x 1.5m
	20% <i>Veronica stricta</i>	koromiko	2L	1m	2 x 1.5m

Client
Unity Development

Project
Ashbourne Development , Matamata, Waikato

Drawing
2148/04 Northern Solar Farm – Overall Planting Plan



Scale
1:1250@A1
1:2,500@A3

Issue Date
17/11/25
Issue
S53

Drawn
BP
Checked
SW



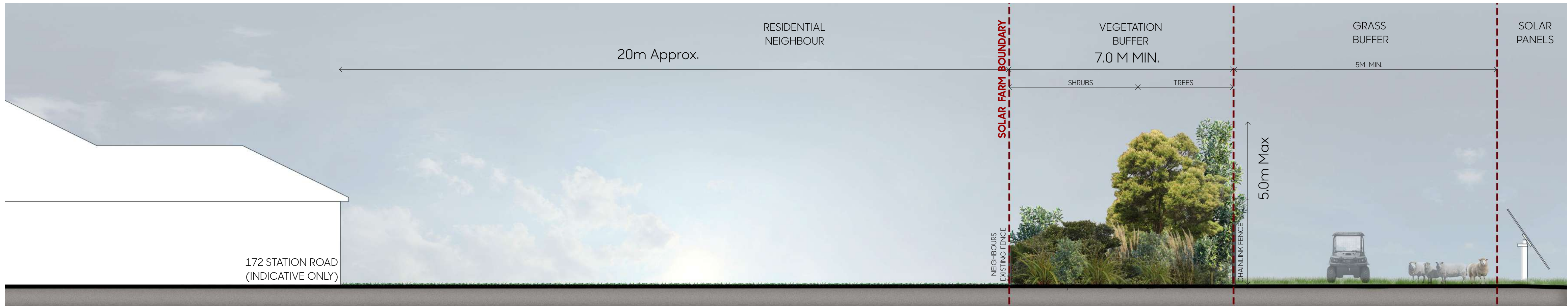


PLANT PALETTE

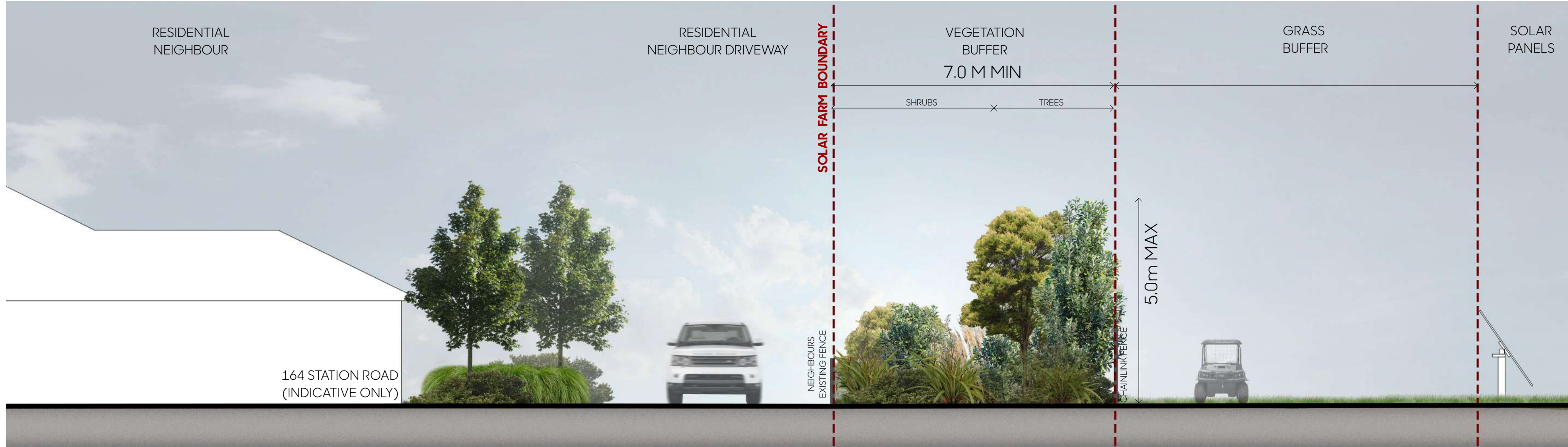


Code	Botanical Name	Common Name	Grade	Spacing	HxW Mature
Tail Specimen Trees					
DD	<i>Dacrycarpus dacrydioides</i>	kahikatea	45L	as shown	50 x 5m
KE	<i>Knightia excelsa</i>	rewarewa	45L	as shown	15 x 3m
LN	<i>Laurelia novae-zelandiae</i>	pukatea	45L	as shown	10 x 4m
SM	<i>Sophora microphylla</i>	kōwhai	45L	as shown	8 x 3m
SZ	Screening Mix Zone - Max 5m High				
5%	<i>Austroderia fulvida</i>	toetoe	3L	1m	1.5 x 1.5m
25%	<i>Coprosma robusta</i>	karamu	3L	1m	5 x 4m
10%	<i>Coprosma propinqua</i>	mingimingi	3L	1m	5 x 2.5m
5%	<i>Leptospermum scoparium</i>	manuka	3L	1m	4 x 3m
25%	<i>Macropiper excelsum</i>	kawakawa	3L	1m	4 x 4m
15%	<i>Pittosporum tenuifolium</i>	kohuhu	3L	1m	5 x 3m
5%	<i>Phormium cookianum</i>	wharariki	3L	1m	1.5 x 1.5m
10%	<i>Myrsine australis</i>	red matipo	3L	1m	5 x 3m
AS	Amenity Shrub Mix Screening Zone - Under 2.5m High				
15%	<i>Astelia grandis</i>	swamp astelia	2L	1m	1.5 x 1.5m
5%	<i>Austroderia fulvida</i>	toetoe	2L	1m	1.5 x 1.5m
15%	<i>Carex virgata</i>	pukio	2L	1m	1 x 1m
5%	<i>Corokia buddleioides</i>	corokia	2L	1m	2 x 2m
15%	<i>Coprosma rhamnoides</i>	twiggy Coprosma	2L	1m	1.5 x 1m
25%	<i>Phormium cookianum</i>	wharariki	2L	1m	1.5 x 1.5m
20%	<i>Veronica stricta</i>	koromiko	2L	1m	2 x 1.5m

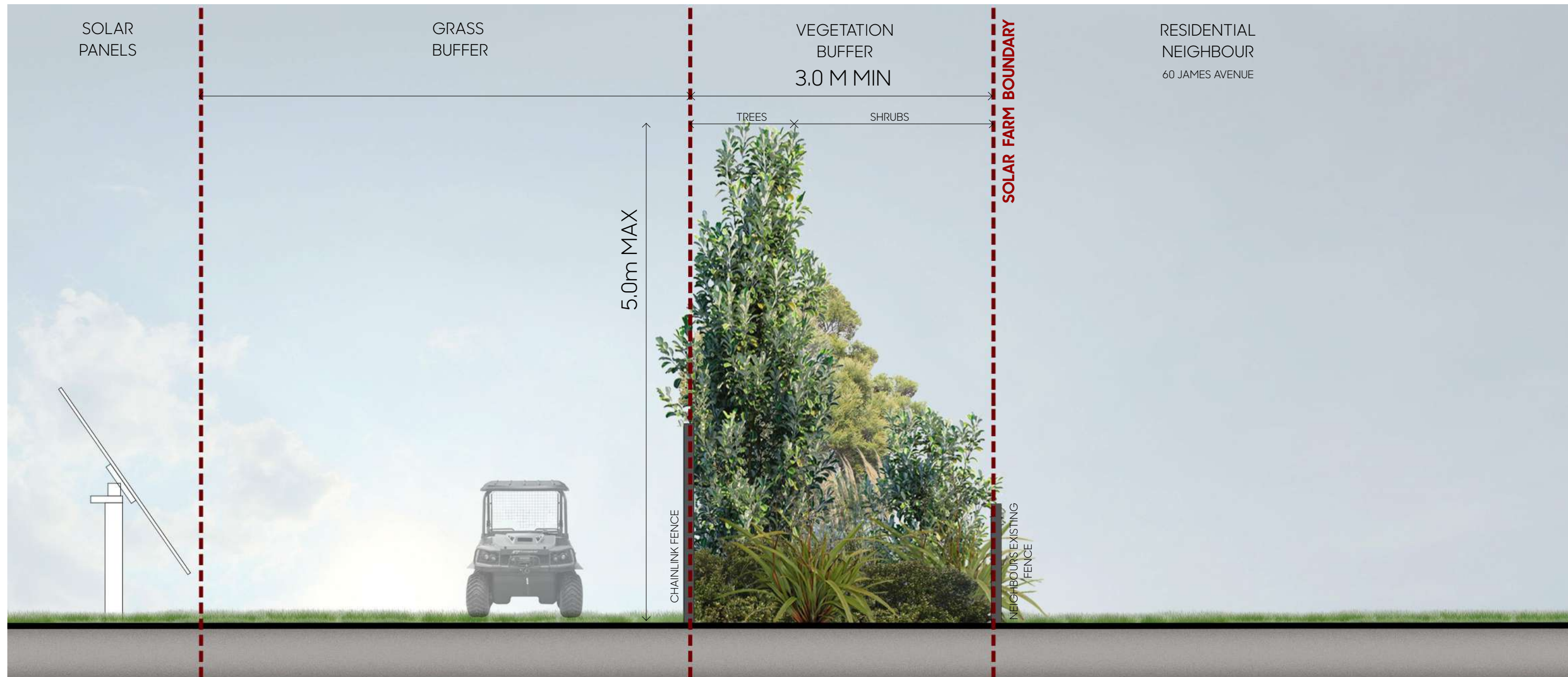
SECTION A-A 1:80@A1 / 1:160@A3
NOTE: VEGETATION SHOWN AS INDICATIVE OF 10 YEAR MATURITY



SECTION B-B 1:80@A1 / 1:160@A3
NOTE: VEGETATION SHOWN AS INDICATIVE OF 10 YEAR MATURITY



SECTION C-C 1:40@A1 / 1:80@A3
NOTE: VEGETATION SHOWN AS INDICATIVE OF 10 YEAR MATURITY



NORTHERN SOLAR FARM SECTION LOCATIONS 1:3,000@A1 / 1:6,000@A3



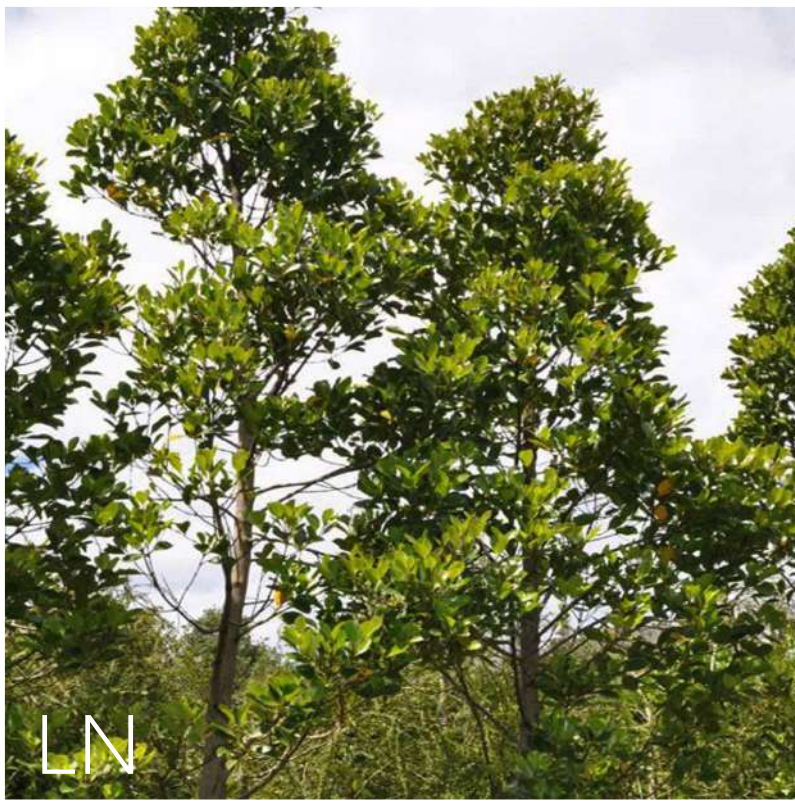
SPECIMEN TREES



DD
Dacrycarpus dacrydioides



KE
Knightia excelsa



LN
Laurelia novae-zelandiae



SM
Sophora microphylla

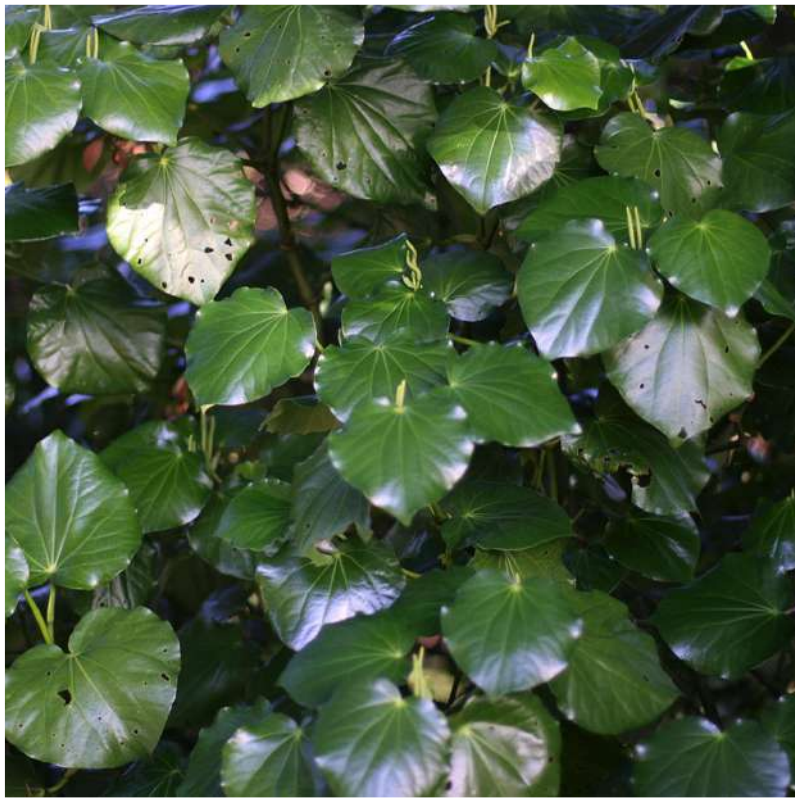
SCREENING MIX ZONE - MAX 5M HIGH (SZ)



Coprosma robusta



Coprosma propinqua



Marcropiper exelsum



Leptospermum scoparium



Myrsine australis



Austroderia fulvida

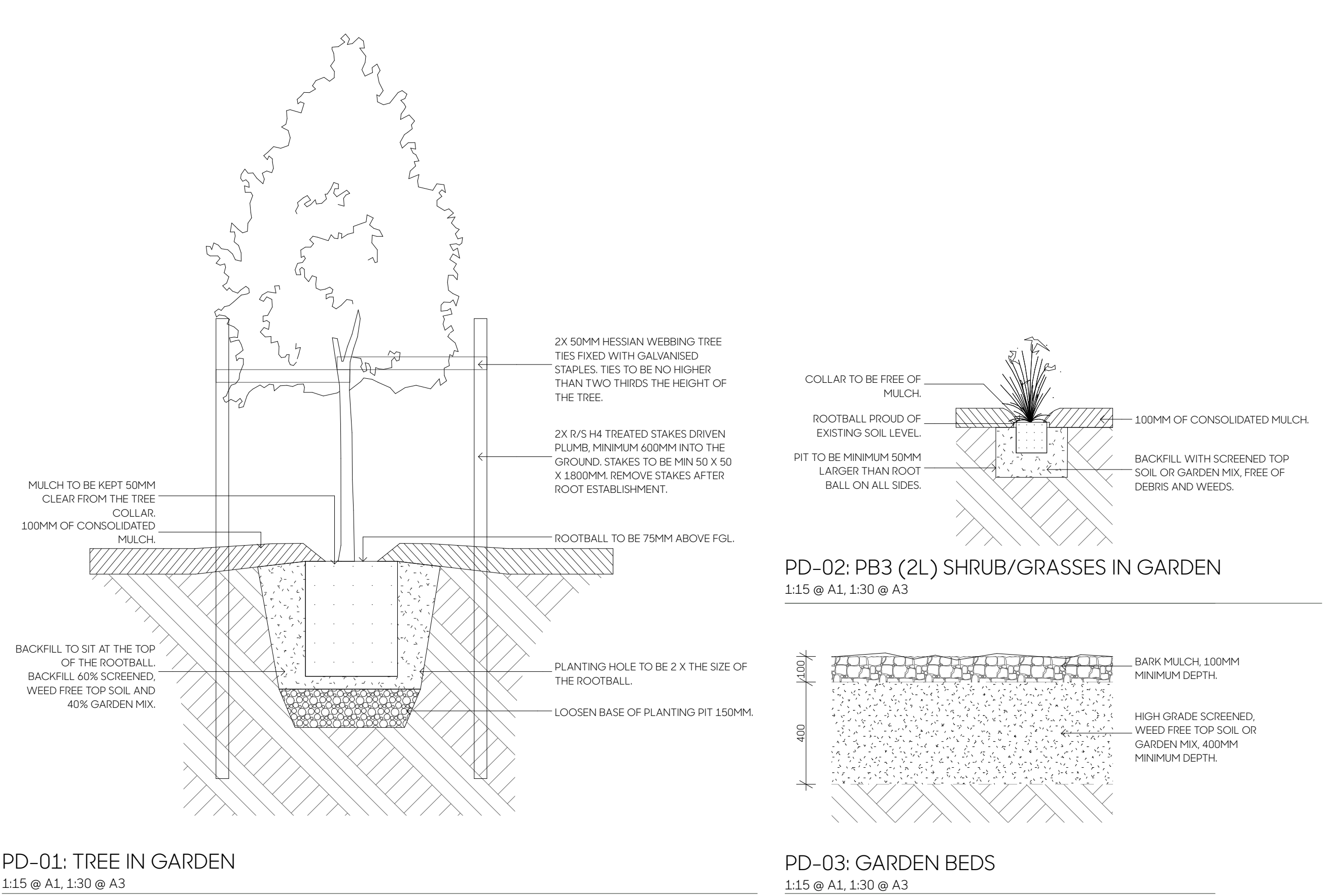


Phormium cookianum



Pittosporum tenuifolium

Code	Botanical Name	Common Name	Grade	Spacing	HxW Mature
Tall Specimen Trees					
DD	<i>Dacrycarpus dacrydioides</i>	kahikatea	45L	as shown	50 x 5m
KE	<i>Knightia excelsa</i>	rewarewa	45L	as shown	15 x 3m
LN	<i>Laurelia novae-zelandiae</i>	pukatea	45L	as shown	10 x 4m
SM	<i>Sophora microphylla</i>	kōwhai	45L	as shown	8 x 3m
SZ	Screening Mix Zone - Max 5m High				
	5% <i>Austroderia fulvida</i>	toetoe	3L	1m	1.5 x 1.5m
	25% <i>Coprosma robusta</i>	karamu	3L	1m	5 x 4m
	10% <i>Coprosma propinqua</i>	mingimingi	3L	1m	5 x 2.5m
	5% <i>Leptospermum scoparium</i>	manuka	3L	1m	4 x 3m
	25% <i>Macropiper excelsum</i>	kawakawa	3L	1m	4 x 4m
	15% <i>Pittosporum tenuifolium</i>	kohuhu	3L	1m	5 x 3m
	5% <i>Phormium cookianum</i>	wharariki	3L	1m	1.5 x 1.5m
	10% <i>Myrsine australis</i>	red matipo	3L	1m	5 x 3m
AS	Amenity Shrub Mix Screening Zone - Under 2.5m High				
	15% <i>Astelia grandis</i>	swamp astelia	2L	1m	1.5 x 1.5m
	5% <i>Austroderia fulvida</i>	toetoe	2L	1m	1.5 x 1.5m
	15% <i>Carex virgata</i>	pukio	2L	1m	1 x 1m
	5% <i>Corokia buddleioides</i>	corokia	2L	1m	2 x 2m
	15% <i>Coprosma rhamnoides</i>	twiggy Coprosma	2L	1m	1.5 x 1m
	25% <i>Phormium cookianum</i>	wharariki	2L	1m	1.5 x 1.5m
	20% <i>Veronica stricta</i>	koromiko	2L	1m	2 x 1.5m



AMENITY SHRUB MIX SCREENING ZONE - UNDER 2.5M HIGH (AS)



Astelia grandis



Austroderia fulvida



Carex virgata



Corokia buddleioides



Coprosma rhamnoides



Phormium cookianum



Veronica stricta

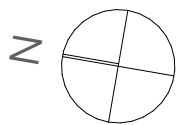
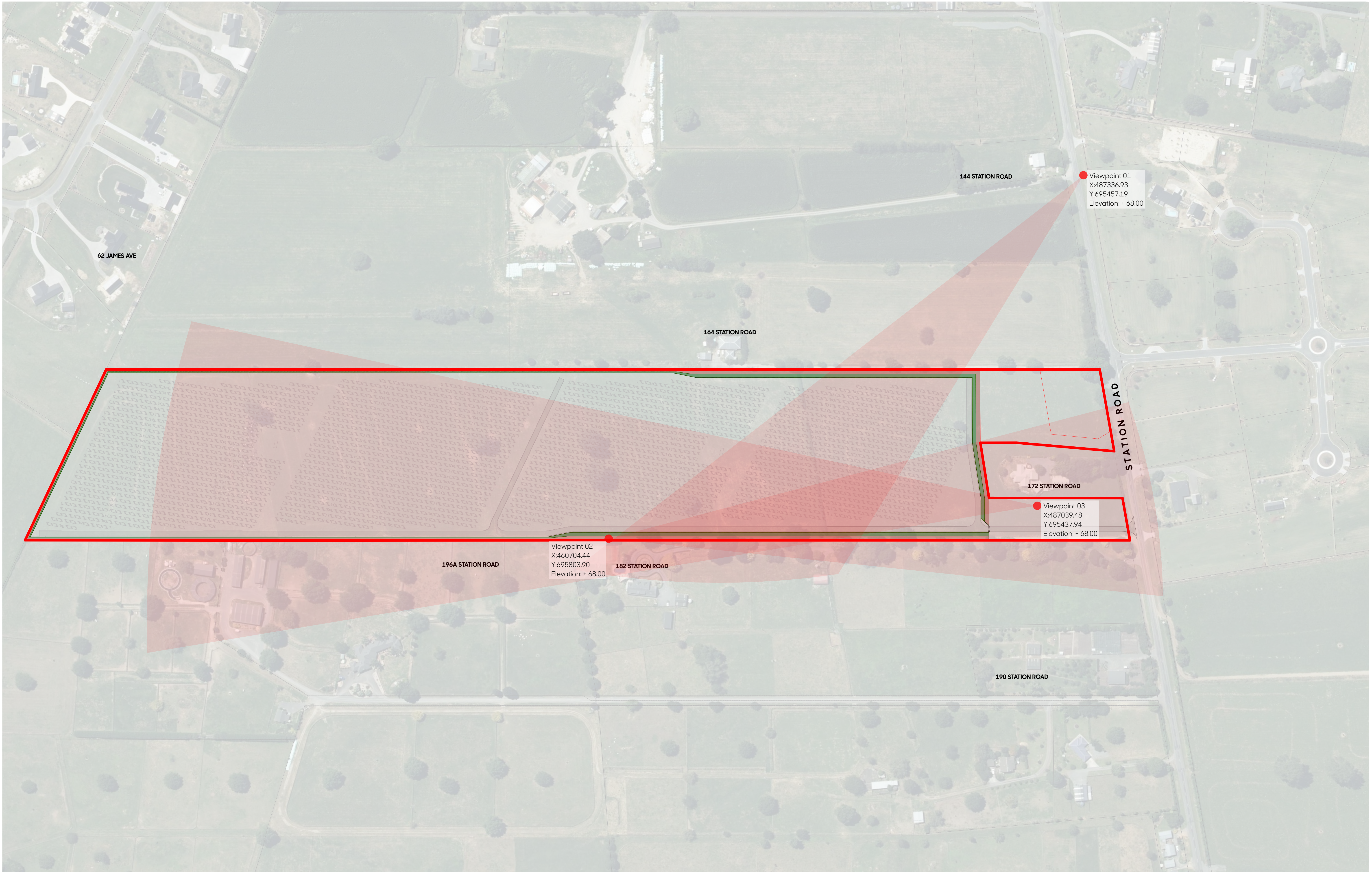




IMAGE SPECIFICATIONS:

- Camera Nikon D5100
- Sensor: CMOS 23.6x15.6mm
- Lens: AF-s NIKKON 18-55mm 1:3.5-5.6G Locked at 55mm Length
- Printed Image Size: 4928 x 3264mm
- Image Viewing Distance: 500mm from eye at A3
- Distance to Site: Approx. 234m
- Co-ordinates Mt Eden 2000: X:487336.93 Y:695457.19
- Elevation: + 68.00m
- Image Date: 8th November 2024

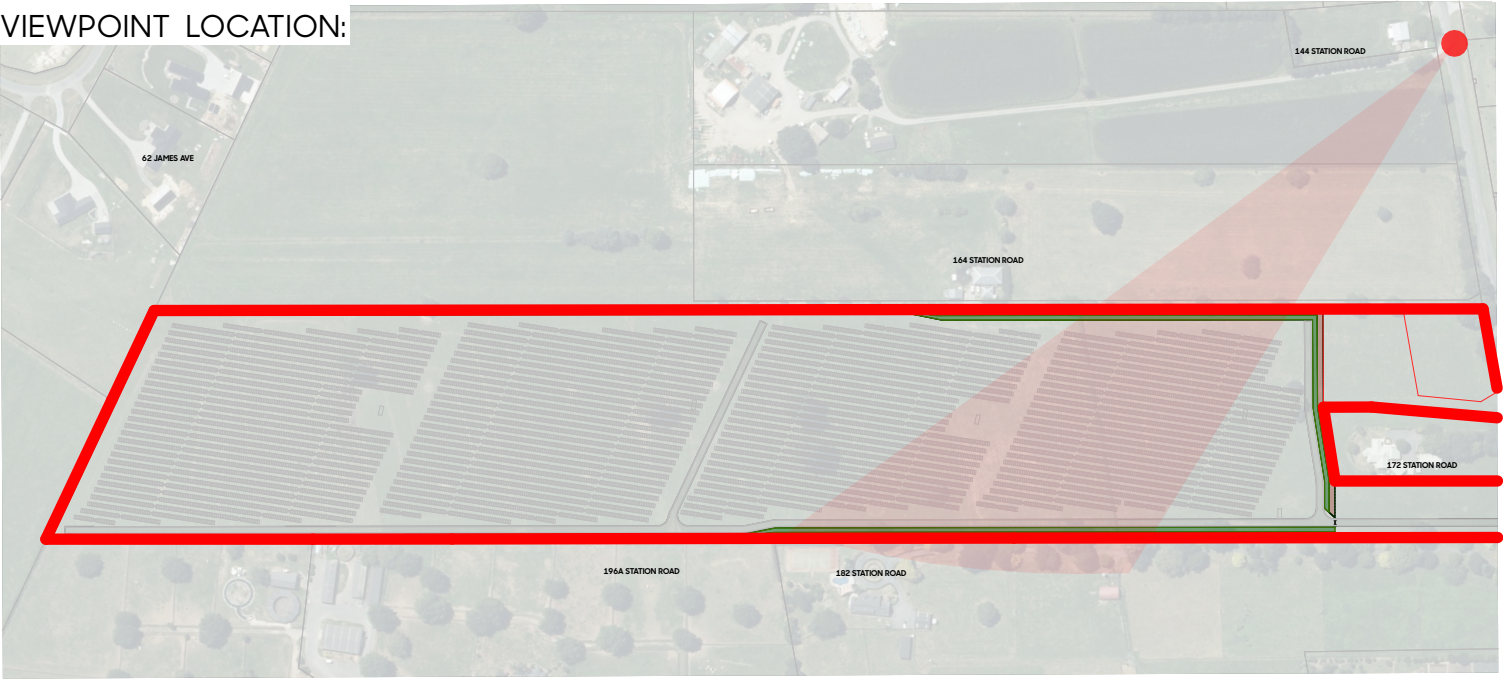




IMAGE SPECIFICATIONS:

- Camera Nikon D5100
- Sensor: CMOS 23.6x15.6mm
- Lens: AF-s NIKKON 18-55mm 1:3.5-5.6G Locked at 55mm Length
- Printed Image Size: 4928 x 3264mm
- Simulation Technique: Photomontage Produced in Photoshop using scale model rendered in ArchiCad
- Image Viewing Distance: 500mm from eye at A3
- Distance to Site: Approx. 234m
- Co-ordinates Mt Eden 2000: X:487336.93 Y:695457.19
- Elevation: + 68.00m
- Image Date: 8th November 2024

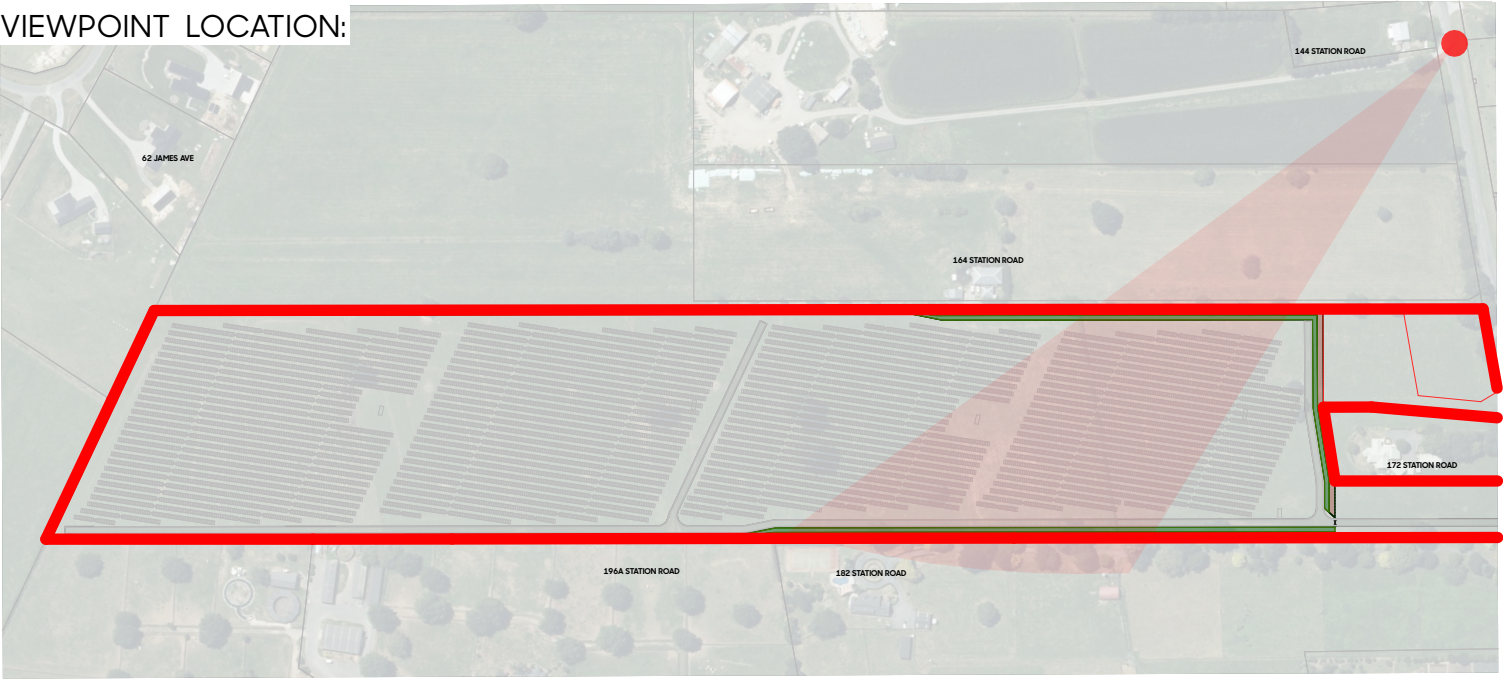
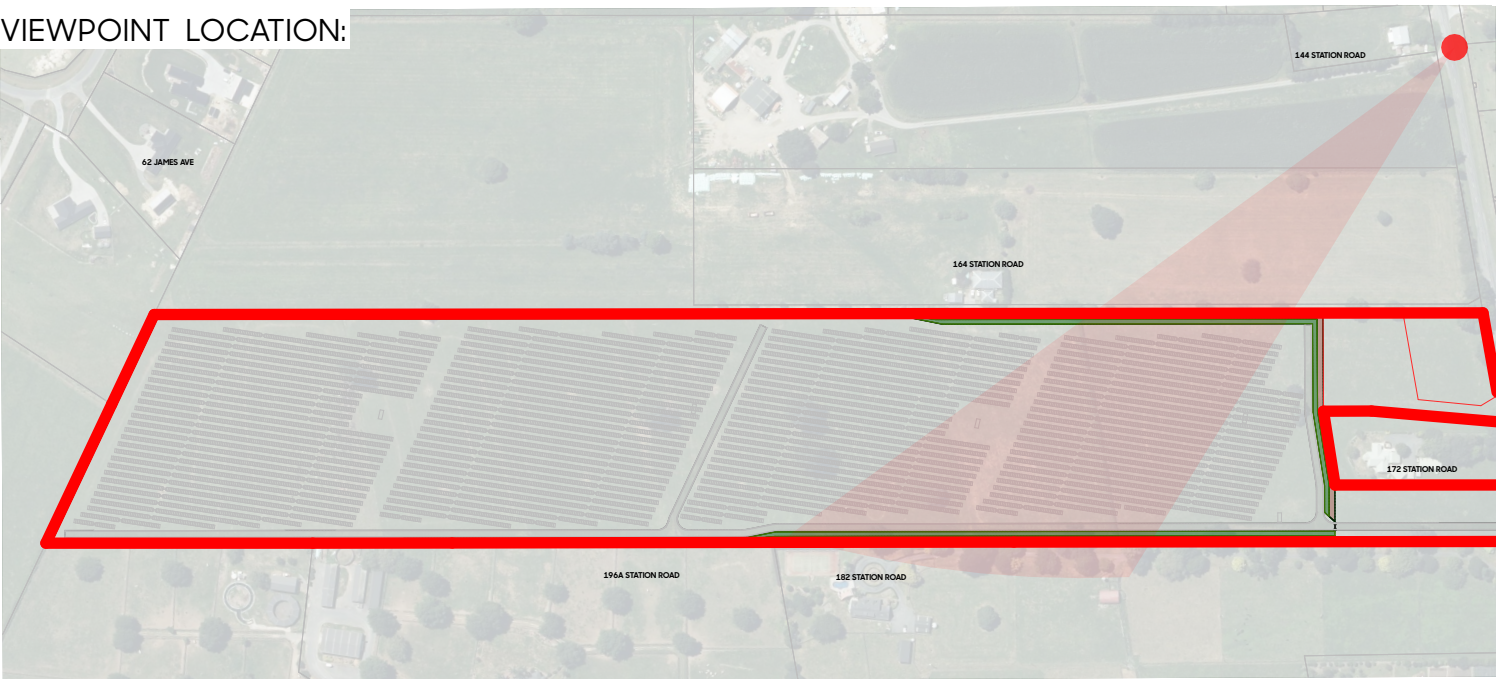




IMAGE SPECIFICATIONS:

- Camera Nikon D5100
- Sensor: CMOS 23.6x15.6mm
- Lens: AF-s NIKKON 18-55mm 1:3.5-5.6G Locked at 55mm Length
- Printed Image Size: 4928 x 3264mm
- Simulation Technique: Photomontage Produced in Photoshop using scale model rendered in ArchiCad
- Image Viewing Distance: 500mm from eye at A3
- Distance to Site: Approx. 234m
- Co-ordinates Mt Eden 2000: X:487336.93 Y:695457.19
- Elevation: + 68.00m
- Image Date: 8th November 2024



Client
Unity Development

Project
Ashbourne Development , Matamata, Waikato

Drawing
2148/11 Northern Solar Farm – Viewpoint 01 – 5 Years

Issue Date
17/11/25
Issue
S53

Drawn
BP
Checked
SW





IMAGE SPECIFICATIONS:

- Camera Nikon D5100
- Sensor: CMOS 23.6x15.6mm
- Lens: AF-s NIKKON 18-55mm 1:3.5-5.6G Locked at 55mm Length
- Printed Image Size: 4928 x 3264mm
- Simulation Technique: Photomontage Produced in Photoshop using scale model rendered in ArchiCad
- Image Viewing Distance: 500mm from eye at A3
- Distance to Site: Approx. 234m
- Co-ordinates Mt Eden 2000: X:487336.93 Y:695457.19
- Elevation: + 68.00m
- Image Date: 8th November 2024

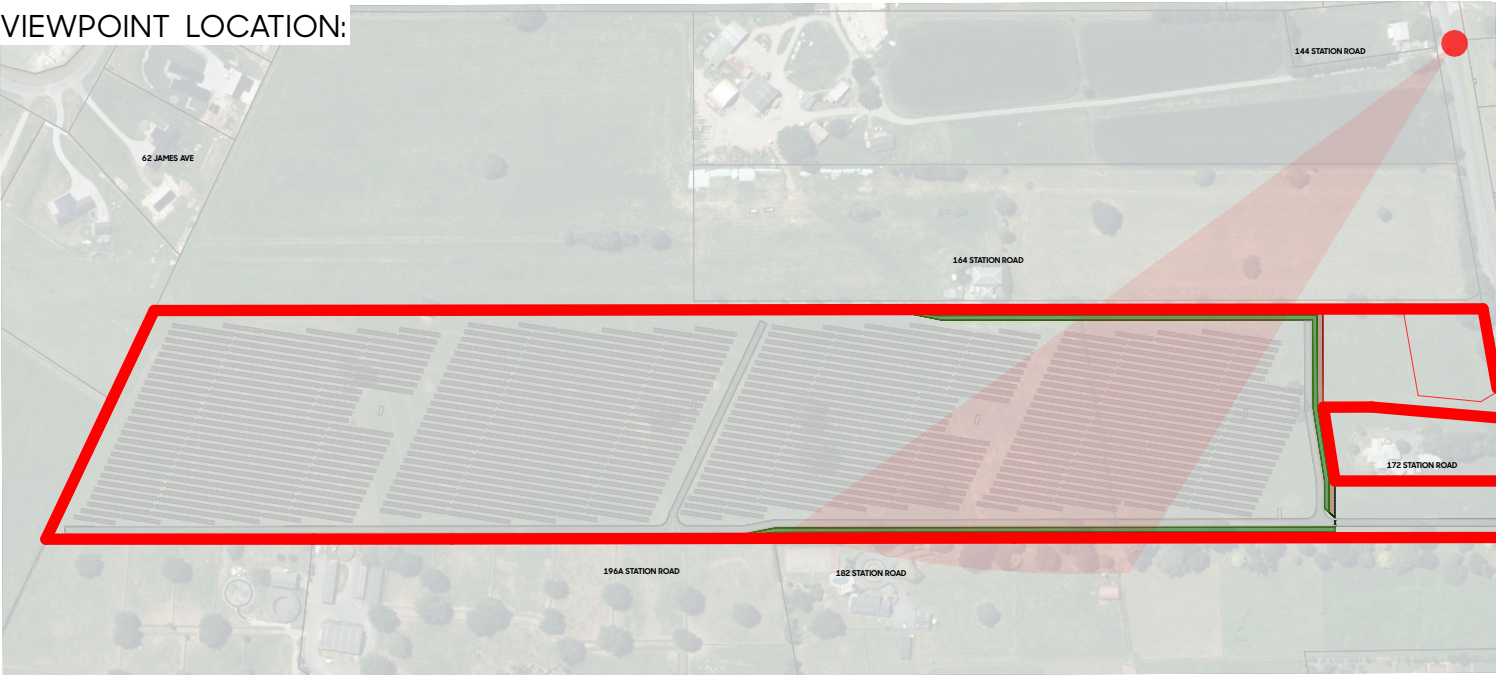




IMAGE SPECIFICATIONS:

- Camera Nikon D5100
- Sensor: CMOS 23.6x15.6mm
- Lens: AF-s NIKKON 18-55mm 1:3.5-5.6G Locked at 55mm Length
- Printed Image Size: 4928 x 3264mm
- Image Viewing Distance: 500mm from eye at A3
- Distance to Site: Within site boundary
- Co-ordinates Mt Eden 2000: X:487336.93 Y:695457.19
- Elevation: + 68.00m
- Image Date: 8th November 2024

