

GENERAL PLANTING (REFER TO L5.0 + L5.01)

- H1 RAINGARDENS (RG-#)
- H2A RETENSION WETLANDS + MARGINS - UPPER BANK
- H2B RETENSION WETLANDS + MARGINS - LOWER BANK/ AQUATIC
- H3 STORMWATER RESERVE ARBORETUM MIX
- H4 ENTRANCE MIX
- H5 ACCESS LANE + JOAL MIX
- H6 FILL SLOPES + RESIDUAL LAND + STAGE 2 - ENRICHMENT
- H7 SNA 5m BUFFER MIX (PLANTED WHERE NECESSARY)
- H8 SNA FILL MIX
- H9 LIZARD RELOCATION OFFSET AREAS MIX
- LAND LEFT TO REGENERATE
- ECOLOGICAL COVENANTED AREAS
- PROPOSED TREE (REFER PLANTING PLANS)
- EXISTING TREE - APPROXIMATE DRIPLINE/ ROOTZONE
- EXISTING TREE - REMOVED

STREET PLANTING (REFER TO L5.02 + L5.03)

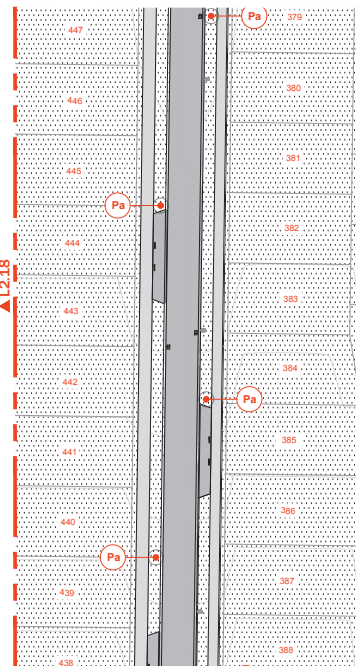
- PROPOSED SPECIMEN TREES (REFER TO SCHEDULES FOR ALL TAGS)
- G1 COLLECTOR STREETS - ACROSS DEVELOPMENT
- G2 NEIGHBOURHOOD STREETS - LOWER TERRACE
- G3 NEIGHBOURHOOD STREETS - UPPER TERRACE
- G4 NEIGHBOURHOOD STREETS - LUCAS BLOCK
- G5 NEIGHBOURHOOD CENTRE
- G6 PARKS AND RESERVES
- HYDROSEEDED GRASS

STORMWATER (REFER TO ENVELOPE)

- PERMANENT WATER LINE (REFER TO ENGINEER)
- 1:100 YEAR EVENT LINE (REFER TO ENGINEER)

ADDITIONAL ELEMENTS

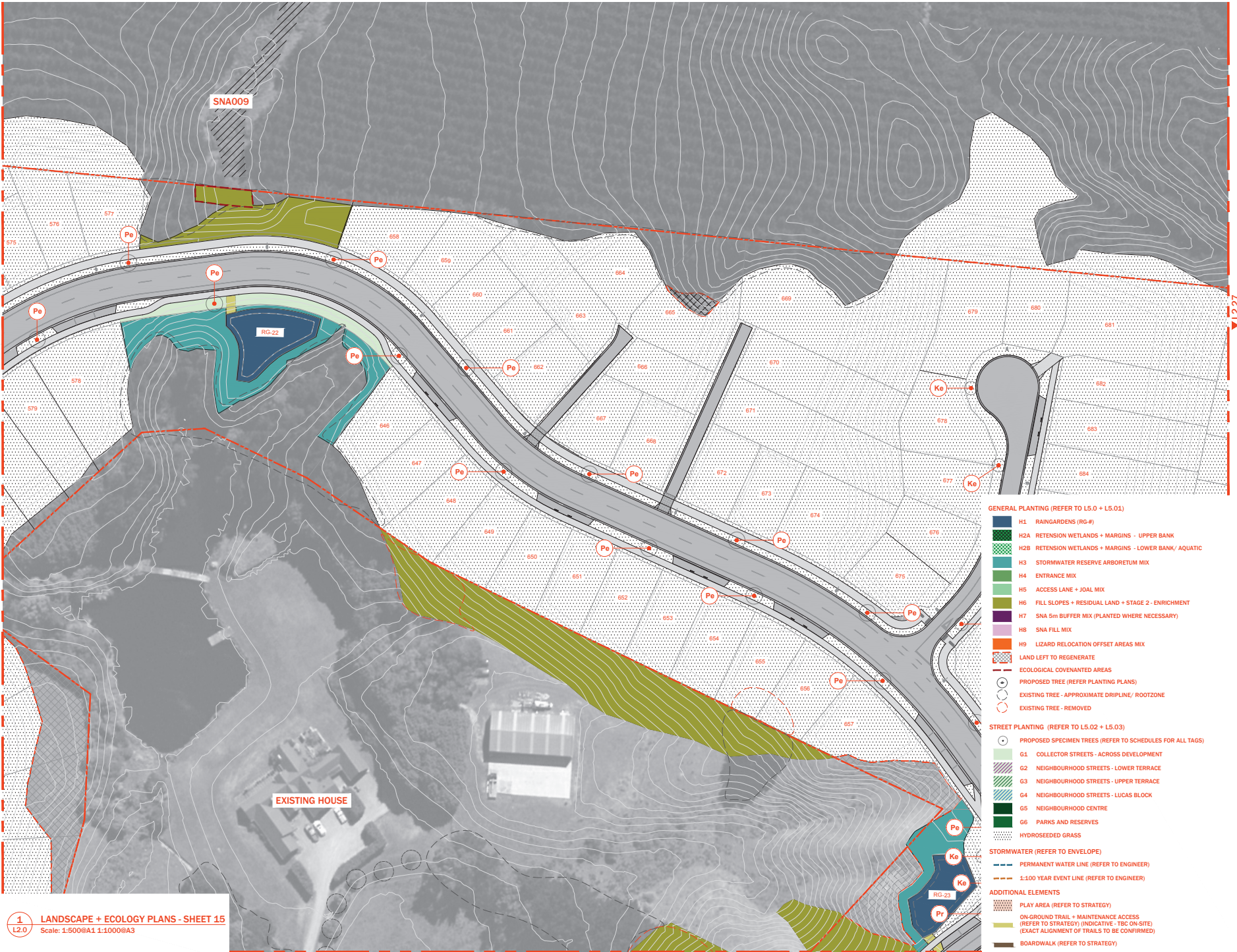
- PLAY AREA (REFER TO STRATEGY)
- ON-GROUND TRAIL + MAINTENANCE ACCESS (REFER TO STRATEGY, INDICATIVE - TBC ON-SITE) (EXACT ALIGNMENT OF TRAILS TO BE CONFIRMED)
- BOARDWALK (REFER TO STRATEGY)



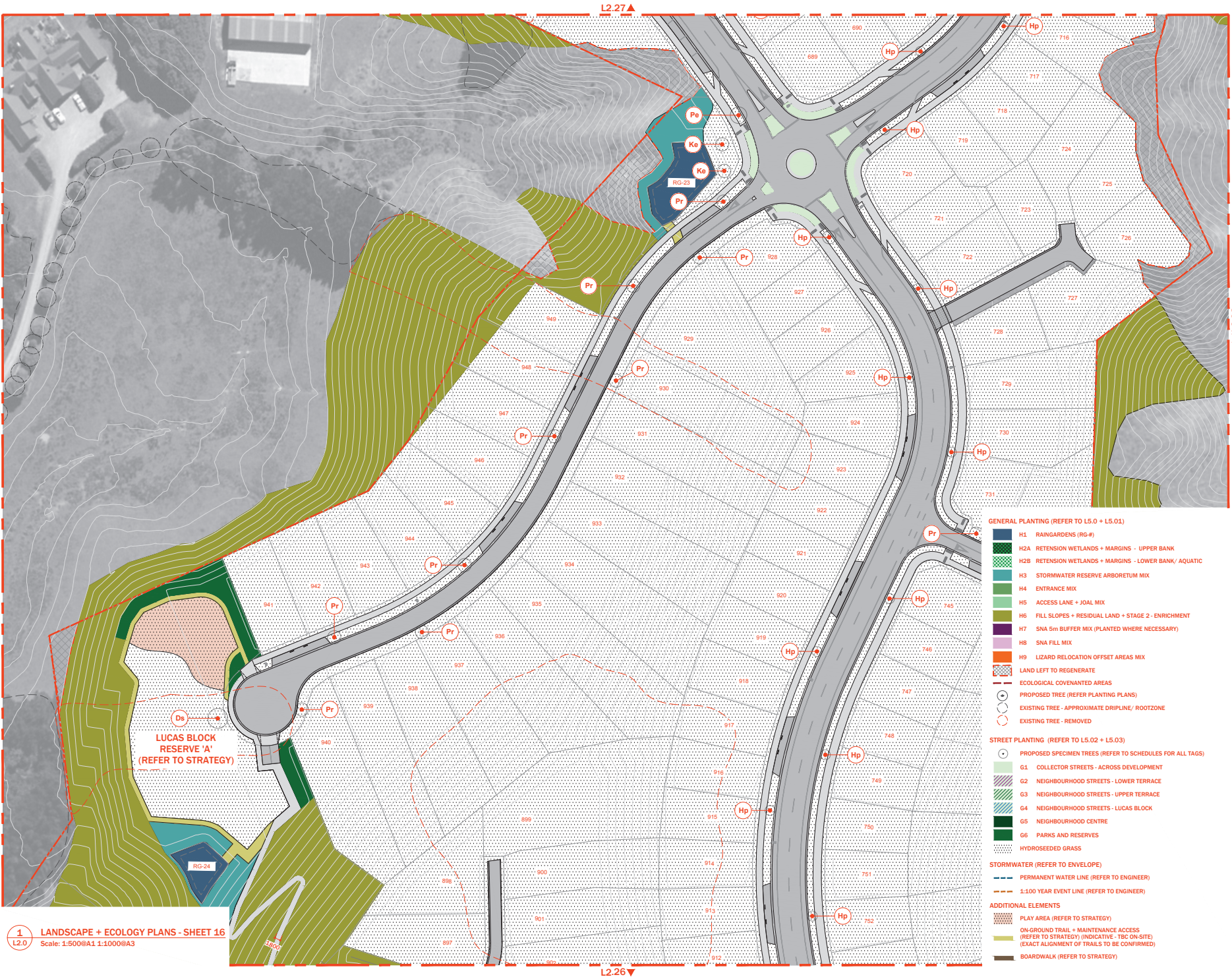












1 LANDSCAPE + ECOLOGY PLANS - SHEET 16  
L2.0 Scale: 1:500@A1 1:1000@A3

blac.

MT. WELCOME  
LANDSCAPE + ECOLOGY PLANS

Project No.098 2025.11

20.11.2025

Revisions

FOR RESOURCE CONSENT

NOT FOR CONSTRUCTION

Disclaimer

This document has been prepared by Blue Limited on the following basis:  
A. It is based on the specific instructions provided to Blue Limited by the client.  
B. It is for the client's use only and is not to be used for any other purpose.  
C. It is not to be used for any other purpose without the written consent of Blue Limited.  
D. It is not to be used for any other purpose without the written consent of Blue Limited.  
E. It is not to be used for any other purpose without the written consent of Blue Limited.  
F. It is not to be used for any other purpose without the written consent of Blue Limited.  
G. It is not to be used for any other purpose without the written consent of Blue Limited.  
H. It is not to be used for any other purpose without the written consent of Blue Limited.  
I. It is not to be used for any other purpose without the written consent of Blue Limited.  
J. It is not to be used for any other purpose without the written consent of Blue Limited.  
K. It is not to be used for any other purpose without the written consent of Blue Limited.  
L. It is not to be used for any other purpose without the written consent of Blue Limited.  
M. It is not to be used for any other purpose without the written consent of Blue Limited.  
N. It is not to be used for any other purpose without the written consent of Blue Limited.  
O. It is not to be used for any other purpose without the written consent of Blue Limited.  
P. It is not to be used for any other purpose without the written consent of Blue Limited.  
Q. It is not to be used for any other purpose without the written consent of Blue Limited.  
R. It is not to be used for any other purpose without the written consent of Blue Limited.  
S. It is not to be used for any other purpose without the written consent of Blue Limited.  
T. It is not to be used for any other purpose without the written consent of Blue Limited.  
U. It is not to be used for any other purpose without the written consent of Blue Limited.  
V. It is not to be used for any other purpose without the written consent of Blue Limited.  
W. It is not to be used for any other purpose without the written consent of Blue Limited.  
X. It is not to be used for any other purpose without the written consent of Blue Limited.  
Y. It is not to be used for any other purpose without the written consent of Blue Limited.  
Z. It is not to be used for any other purpose without the written consent of Blue Limited.

True North

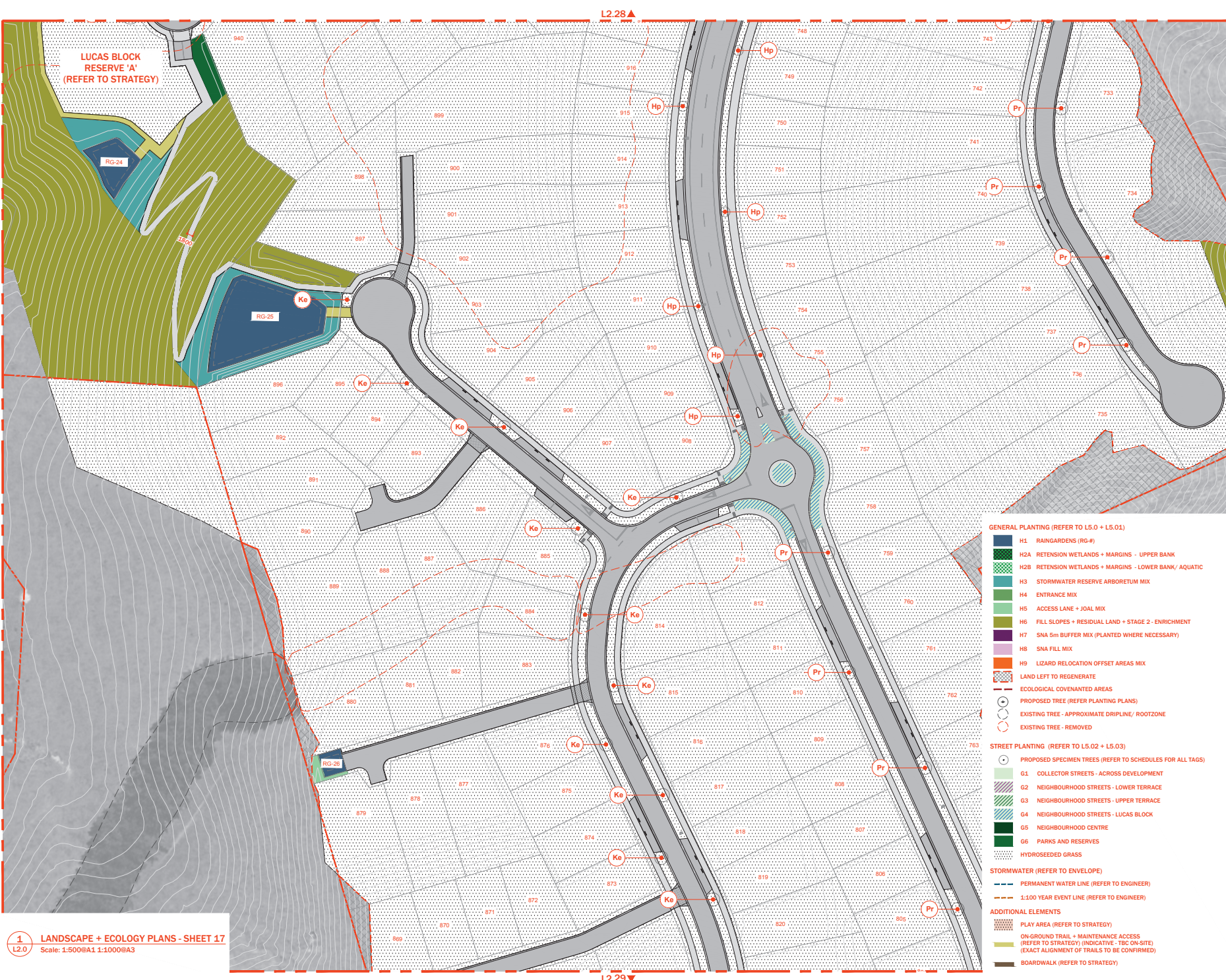
Scale 1:500@A1 1:1000@A3

LANDSCAPE + ECOLOGY PLANS\_SHEET 16

L2.25

Sheet No. © 2025





1 LANDSCAPE + ECOLOGY PLANS - SHEET 17  
L2.0 Scale: 1:500@A1 1:1000@A3

blac.

MT. WELCOME  
LANDSCAPE + ECOLOGY PLANS

Project No.098 2025.11

20.11.2025

Revisions

FOR RESOURCE CONSENT

NOT FOR CONSTRUCTION

Disclaimer

This document has been prepared by Blac Limited on the following basis:  
A. It is based on the specific instructions provided to Blac Limited by the client.  
B. It is for the client's use only and is not to be used for any other purpose.  
C. Blac Limited does not accept any liability for any loss or damage arising from the use of this document.  
D. Blac Limited does not accept any liability for any loss or damage arising from the use of this document.  
E. Blac Limited does not accept any liability for any loss or damage arising from the use of this document.  
F. Blac Limited does not accept any liability for any loss or damage arising from the use of this document.  
G. Blac Limited does not accept any liability for any loss or damage arising from the use of this document.  
H. Blac Limited does not accept any liability for any loss or damage arising from the use of this document.  
I. Blac Limited does not accept any liability for any loss or damage arising from the use of this document.  
J. Blac Limited does not accept any liability for any loss or damage arising from the use of this document.  
K. Blac Limited does not accept any liability for any loss or damage arising from the use of this document.  
L. Blac Limited does not accept any liability for any loss or damage arising from the use of this document.  
M. Blac Limited does not accept any liability for any loss or damage arising from the use of this document.  
N. Blac Limited does not accept any liability for any loss or damage arising from the use of this document.  
O. Blac Limited does not accept any liability for any loss or damage arising from the use of this document.  
P. Blac Limited does not accept any liability for any loss or damage arising from the use of this document.  
Q. Blac Limited does not accept any liability for any loss or damage arising from the use of this document.  
R. Blac Limited does not accept any liability for any loss or damage arising from the use of this document.  
S. Blac Limited does not accept any liability for any loss or damage arising from the use of this document.  
T. Blac Limited does not accept any liability for any loss or damage arising from the use of this document.  
U. Blac Limited does not accept any liability for any loss or damage arising from the use of this document.  
V. Blac Limited does not accept any liability for any loss or damage arising from the use of this document.  
W. Blac Limited does not accept any liability for any loss or damage arising from the use of this document.  
X. Blac Limited does not accept any liability for any loss or damage arising from the use of this document.  
Y. Blac Limited does not accept any liability for any loss or damage arising from the use of this document.  
Z. Blac Limited does not accept any liability for any loss or damage arising from the use of this document.

Scale 1:500@A1 1:1000@A3

LANDSCAPE + ECOLOGY PLANS\_SHEET 17

L2.26

Sheet No. © 2025



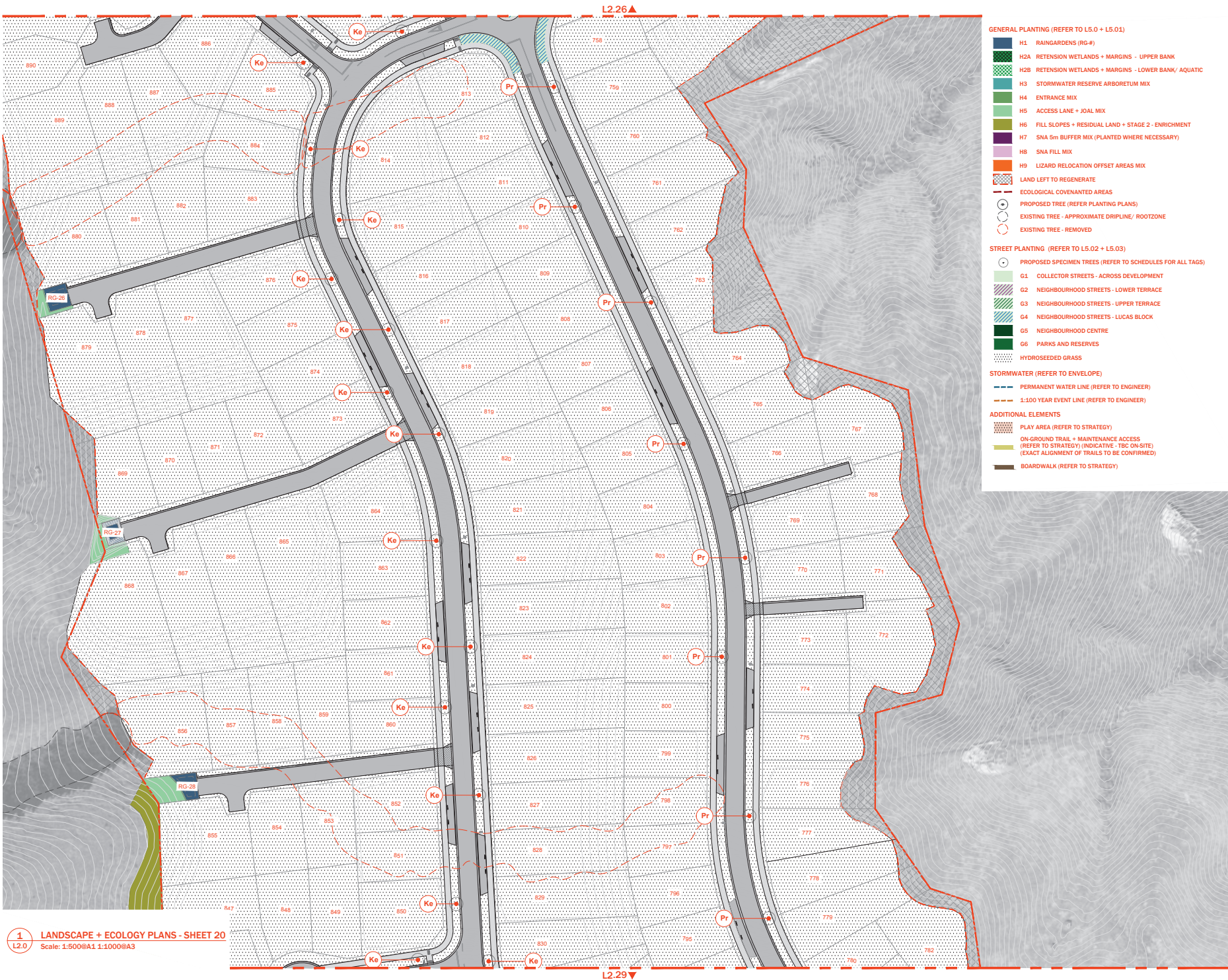


- GENERAL PLANTING (REFER TO L5.0 + L5.01)**
- H1 RAINGARDENS (RG-#)
  - H2A RETENSION WETLANDS + MARGINS - UPPER BANK
  - H2B RETENSION WETLANDS + MARGINS - LOWER BANK/ AQUATIC
  - H3 STORMWATER RESERVE ARBORETUM MIX
  - H4 ENTRANCE MIX
  - H5 ACCESS LANE + JOAL MIX
  - H6 FILL SLOPES + RESIDUAL LAND + STAGE 2 - ENRICHMENT
  - H7 SNA 5m BUFFER MIX (PLANTED WHERE NECESSARY)
  - H8 SNA FILL MIX
  - H9 LIZARD RELOCATION OFFSET AREAS MIX
  - LAND LEFT TO REGENERATE
- ECOLOGICAL COVENANTED AREAS**
- PROPOSED TREE (REFER PLANTING PLANS)
  - EXISTING TREE - APPROXIMATE DRIPLINE/ ROOTZONE
  - EXISTING TREE - REMOVED
- STREET PLANTING (REFER TO L5.02 + L5.03)**
- G1 COLLECTOR STREETS - ACROSS DEVELOPMENT
  - G2 NEIGHBOURHOOD STREETS - LOWER TERRACE
  - G3 NEIGHBOURHOOD STREETS - UPPER TERRACE
  - G4 NEIGHBOURHOOD STREETS - LUCAS BLOCK
  - G5 NEIGHBOURHOOD CENTRE
  - G6 PARKS AND RESERVES
  - HYDROSEEDED GRASS
- STORMWATER (REFER TO ENVELOPE)**
- PERMANENT WATER LINE (REFER TO ENGINEER)
  - 1:100 YEAR EVENT LINE (REFER TO ENGINEER)
- ADDITIONAL ELEMENTS**
- PLAY AREA (REFER TO STRATEGY)
  - ON-GROUND TRAIL + MAINTENANCE ACCESS (REFER TO STRATEGY) (INDICATIVE - TBC ON-SITE) (EXACT ALIGNMENT OF TRAILS TO BE CONFIRMED)
  - BOARDWALK (REFER TO STRATEGY)









- GENERAL PLANTING (REFER TO L5.0 + L5.01)
- H1 RAINGARDENS (RG-#)
  - H2A RETENSION WETLANDS + MARGINS - UPPER BANK
  - H2B RETENSION WETLANDS + MARGINS - LOWER BANK/ AQUATIC
  - H3 STORMWATER RESERVE ARBORETUM MIX
  - H4 ENTRANCE MIX
  - H5 ACCESS LANE + JOAL MIX
  - H6 FILL SLOPES + RESIDUAL LAND + STAGE 2 - ENRICHMENT
  - H7 SNA 5m BUFFER MIX (PLANTED WHERE NECESSARY)
  - H8 SNA FILL MIX
  - H9 LIZARD RELOCATION OFFSET AREAS MIX
  - LAND LEFT TO REGENERATE
  - ECOLOGICAL COVENANTED AREAS
  - PROPOSED TREE (REFER PLANTING PLANS)
  - EXISTING TREE - APPROXIMATE DRIPLINE/ ROOTZONE
  - EXISTING TREE - REMOVED
- STREET PLANTING (REFER TO L5.02 + L5.03)
- PROPOSED SPECIMEN TREES (REFER TO SCHEDULES FOR ALL TAGS)
  - G1 COLLECTOR STREETS - ACROSS DEVELOPMENT
  - G2 NEIGHBOURHOOD STREETS - LOWER TERRACE
  - G3 NEIGHBOURHOOD STREETS - UPPER TERRACE
  - G4 NEIGHBOURHOOD STREETS - LUCAS BLOCK
  - G5 NEIGHBOURHOOD CENTRE
  - G6 PARKS AND RESERVES
  - HYDROSEEDING GRASS
- STORMWATER (REFER TO ENVELOPE)
- PERMANENT WATER LINE (REFER TO ENGINEER)
  - 1:100 YEAR EVENT LINE (REFER TO ENGINEER)
- ADDITIONAL ELEMENTS
- PLAY AREA (REFER TO STRATEGY)
  - ON-GROUND TRAIL + MAINTENANCE ACCESS (REFER TO STRATEGY) (INDICATIVE - TBC ON-SITE) (EXACT ALIGNMENT OF TRAILS TO BE CONFIRMED)
  - BOARDWALK (REFER TO STRATEGY)

MT. WELCOME

LANDSCAPE + ECOLOGY PLANS

blac.

Project No.0982025.11

20.11.2025

Revisions

FOR RESOURCE CONSENT

NOT FOR CONSTRUCTION

Disclaimer

This document has been prepared by Blac Limited on the following basis:  
A. It is based on the specific instructions provided to Blac Limited by the client.  
B. It is for the client's use only and is not to be used for any other purpose.  
C. Blac Limited does not warrant the accuracy or completeness of the information provided by the client.  
D. Blac Limited does not warrant the accuracy or completeness of the information provided by the client.  
E. Blac Limited does not warrant the accuracy or completeness of the information provided by the client.  
F. Blac Limited does not warrant the accuracy or completeness of the information provided by the client.  
G. Blac Limited does not warrant the accuracy or completeness of the information provided by the client.  
H. Blac Limited does not warrant the accuracy or completeness of the information provided by the client.  
I. Blac Limited does not warrant the accuracy or completeness of the information provided by the client.  
J. Blac Limited does not warrant the accuracy or completeness of the information provided by the client.  
K. Blac Limited does not warrant the accuracy or completeness of the information provided by the client.  
L. Blac Limited does not warrant the accuracy or completeness of the information provided by the client.  
M. Blac Limited does not warrant the accuracy or completeness of the information provided by the client.  
N. Blac Limited does not warrant the accuracy or completeness of the information provided by the client.  
O. Blac Limited does not warrant the accuracy or completeness of the information provided by the client.  
P. Blac Limited does not warrant the accuracy or completeness of the information provided by the client.  
Q. Blac Limited does not warrant the accuracy or completeness of the information provided by the client.  
R. Blac Limited does not warrant the accuracy or completeness of the information provided by the client.  
S. Blac Limited does not warrant the accuracy or completeness of the information provided by the client.  
T. Blac Limited does not warrant the accuracy or completeness of the information provided by the client.  
U. Blac Limited does not warrant the accuracy or completeness of the information provided by the client.  
V. Blac Limited does not warrant the accuracy or completeness of the information provided by the client.  
W. Blac Limited does not warrant the accuracy or completeness of the information provided by the client.  
X. Blac Limited does not warrant the accuracy or completeness of the information provided by the client.  
Y. Blac Limited does not warrant the accuracy or completeness of the information provided by the client.  
Z. Blac Limited does not warrant the accuracy or completeness of the information provided by the client.

True North

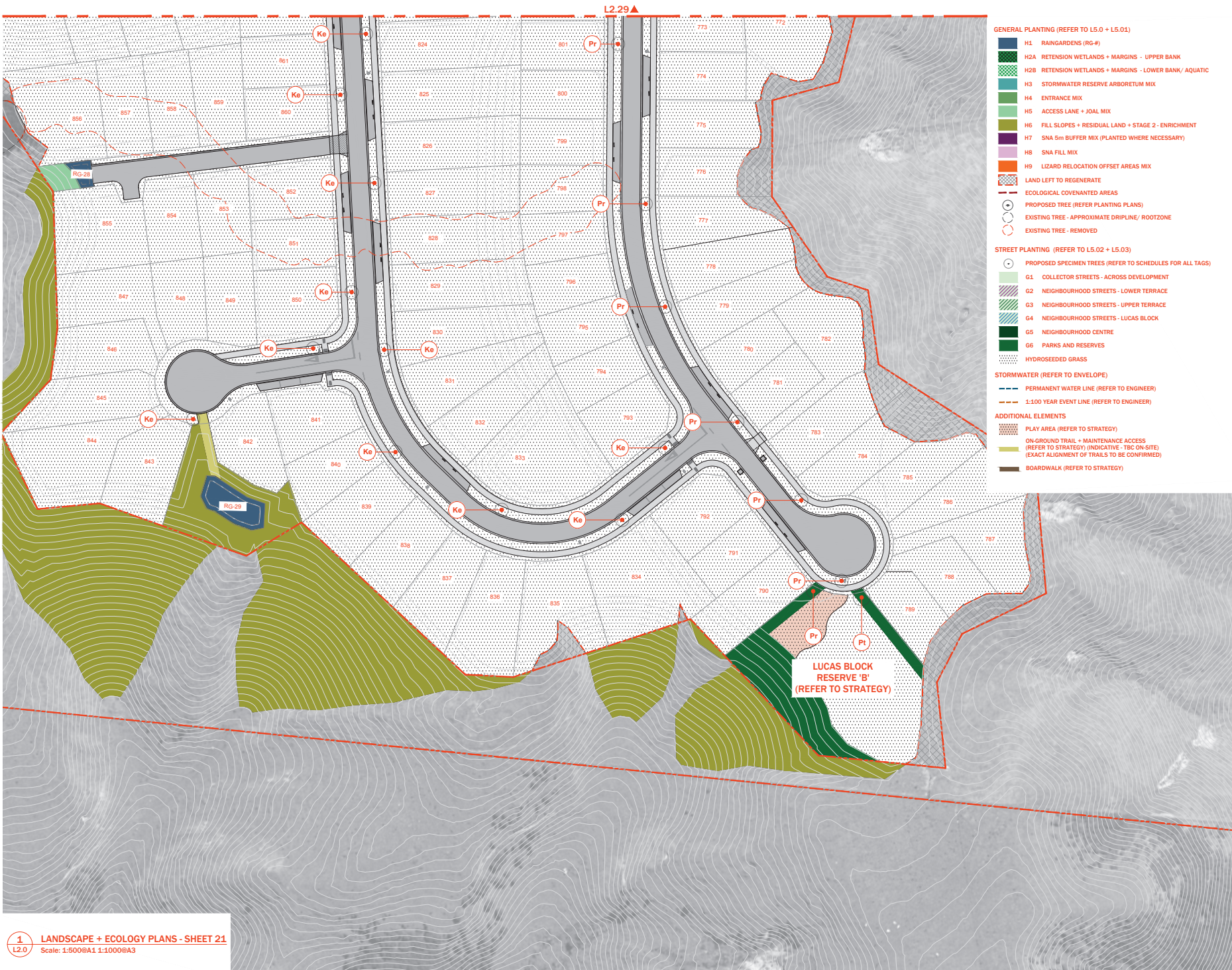
Scale 1:500@A1 1:1000@A3

LANDSCAPE + ECOLOGY PLANS\_SHEET 20

L2.29

Sheet No. © 2025





- GENERAL PLANTING (REFER TO L5.0 + L5.01)**
- H1 RAINGARDENS (RG-#)
  - H2A RETENSION WETLANDS + MARGINS - UPPER BANK
  - H2B RETENSION WETLANDS + MARGINS - LOWER BANK/ AQUATIC
  - H3 STORMWATER RESERVE ARBORETUM MIX
  - H4 ENTRANCE MIX
  - H5 ACCESS LANE + JOAL MIX
  - H6 FILL SLOPES + RESIDUAL LAND + STAGE 2 - ENRICHMENT
  - H7 SNA 5m BUFFER MIX (PLANTED WHERE NECESSARY)
  - H8 SNA FILL MIX
  - H9 LIZARD RELOCATION OFFSET AREAS MIX
  - LAND LEFT TO REGENERATE
  - ECOLOGICAL COVENANTED AREAS
  - PROPOSED TREE (REFER PLANTING PLANS)
  - EXISTING TREE - APPROXIMATE DRIPLINE/ ROOTZONE
  - EXISTING TREE - REMOVED
- STREET PLANTING (REFER TO L5.02 + L5.03)**
- PROPOSED SPECIMEN TREES (REFER TO SCHEDULES FOR ALL TAGS)
  - G1 COLLECTOR STREETS - ACROSS DEVELOPMENT
  - G2 NEIGHBOURHOOD STREETS - LOWER TERRACE
  - G3 NEIGHBOURHOOD STREETS - UPPER TERRACE
  - G4 NEIGHBOURHOOD STREETS - LUCAS BLOCK
  - G5 NEIGHBOURHOOD CENTRE
  - G6 PARKS AND RESERVES
  - HYDROSEEDDED GRASS
- STORMWATER (REFER TO ENVELOPE)**
- PERMANENT WATER LINE (REFER TO ENGINEER)
  - 1:100 YEAR EVENT LINE (REFER TO ENGINEER)
- ADDITIONAL ELEMENTS**
- PLAY AREA (REFER TO STRATEGY)
  - ON-GROUND TRAIL + MAINTENANCE ACCESS (REFER TO STRATEGY) (INDICATIVE - TBC ON-SITE) (EXACT ALIGNMENT OF TRAILS TO BE CONFIRMED)
  - BOARDWALK (REFER TO STRATEGY)

blac.

MT. WELCOME  
LANDSCAPE + ECOLOGY PLANS

Project No.098 2025.11

20.11.2025

Revisions

FOR RESOURCE CONSENT

NOT FOR CONSTRUCTION

Disclaimer

This document has been prepared by Blac Limited on the following basis:  
A. It is based on the specific instructions provided to Blac Limited by the client.  
B. It is for the client's use and is not to be used for any other purpose.  
C. It is not to be used for any other purpose.  
D. It is not to be used for any other purpose.  
E. It is not to be used for any other purpose.  
F. It is not to be used for any other purpose.  
G. It is not to be used for any other purpose.  
H. It is not to be used for any other purpose.  
I. It is not to be used for any other purpose.  
J. It is not to be used for any other purpose.  
K. It is not to be used for any other purpose.  
L. It is not to be used for any other purpose.  
M. It is not to be used for any other purpose.  
N. It is not to be used for any other purpose.  
O. It is not to be used for any other purpose.  
P. It is not to be used for any other purpose.  
Q. It is not to be used for any other purpose.  
R. It is not to be used for any other purpose.  
S. It is not to be used for any other purpose.  
T. It is not to be used for any other purpose.  
U. It is not to be used for any other purpose.  
V. It is not to be used for any other purpose.  
W. It is not to be used for any other purpose.  
X. It is not to be used for any other purpose.  
Y. It is not to be used for any other purpose.  
Z. It is not to be used for any other purpose.

True North

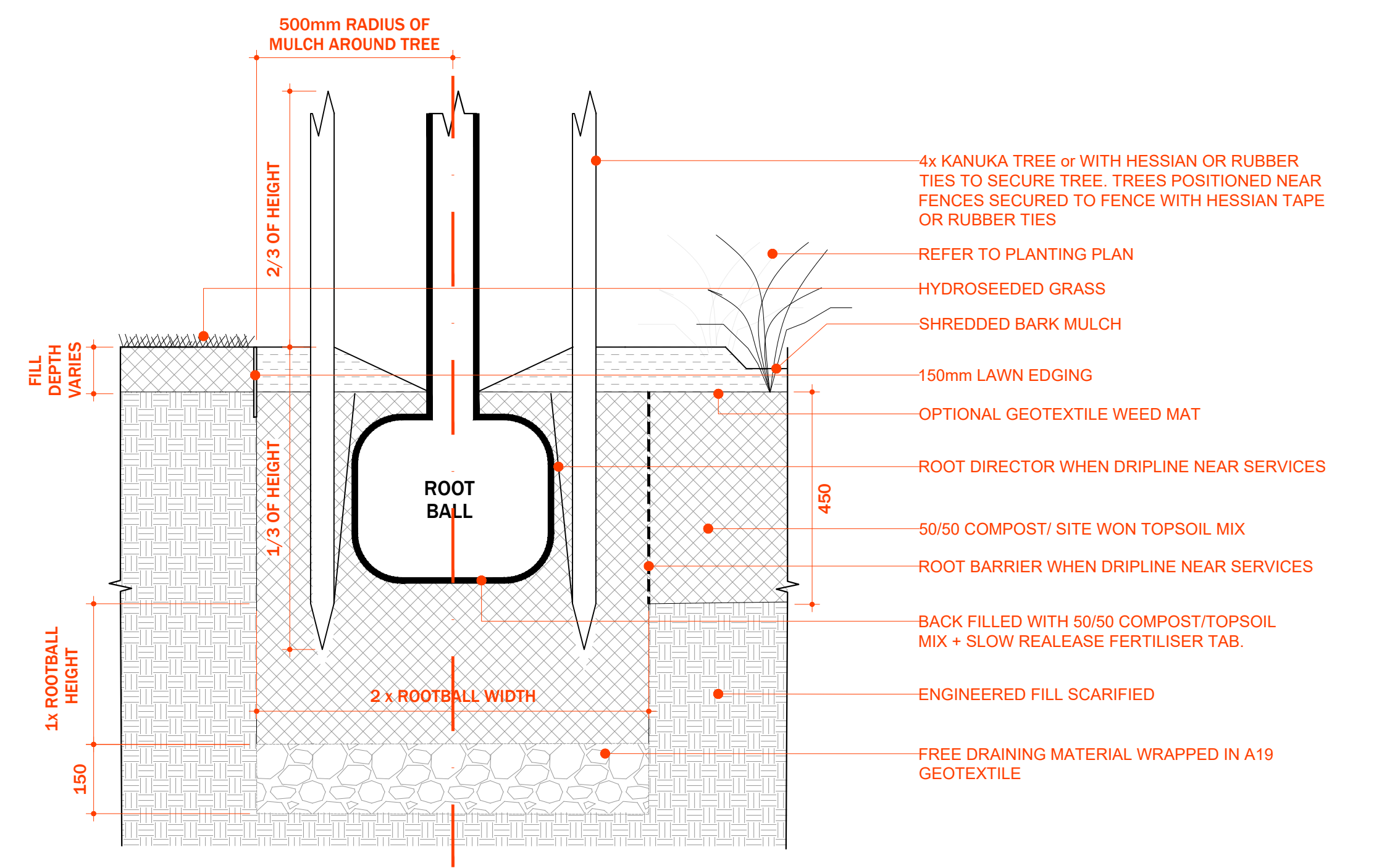
Scale 1:500@A1 1:1000@A3

LANDSCAPE + ECOLOGY PLANS\_SHEET 21

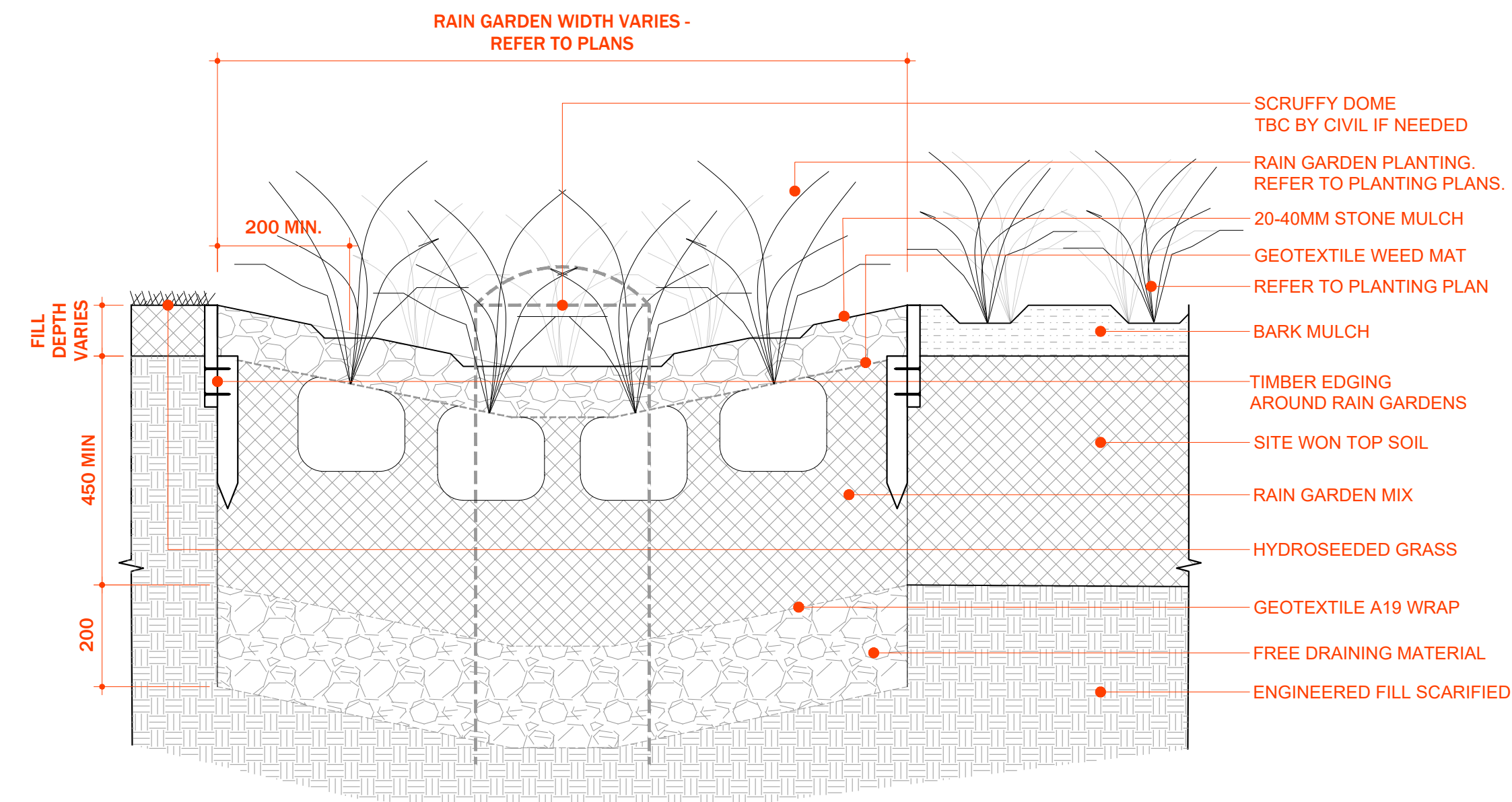
L2.30

Sheet No. © 2025

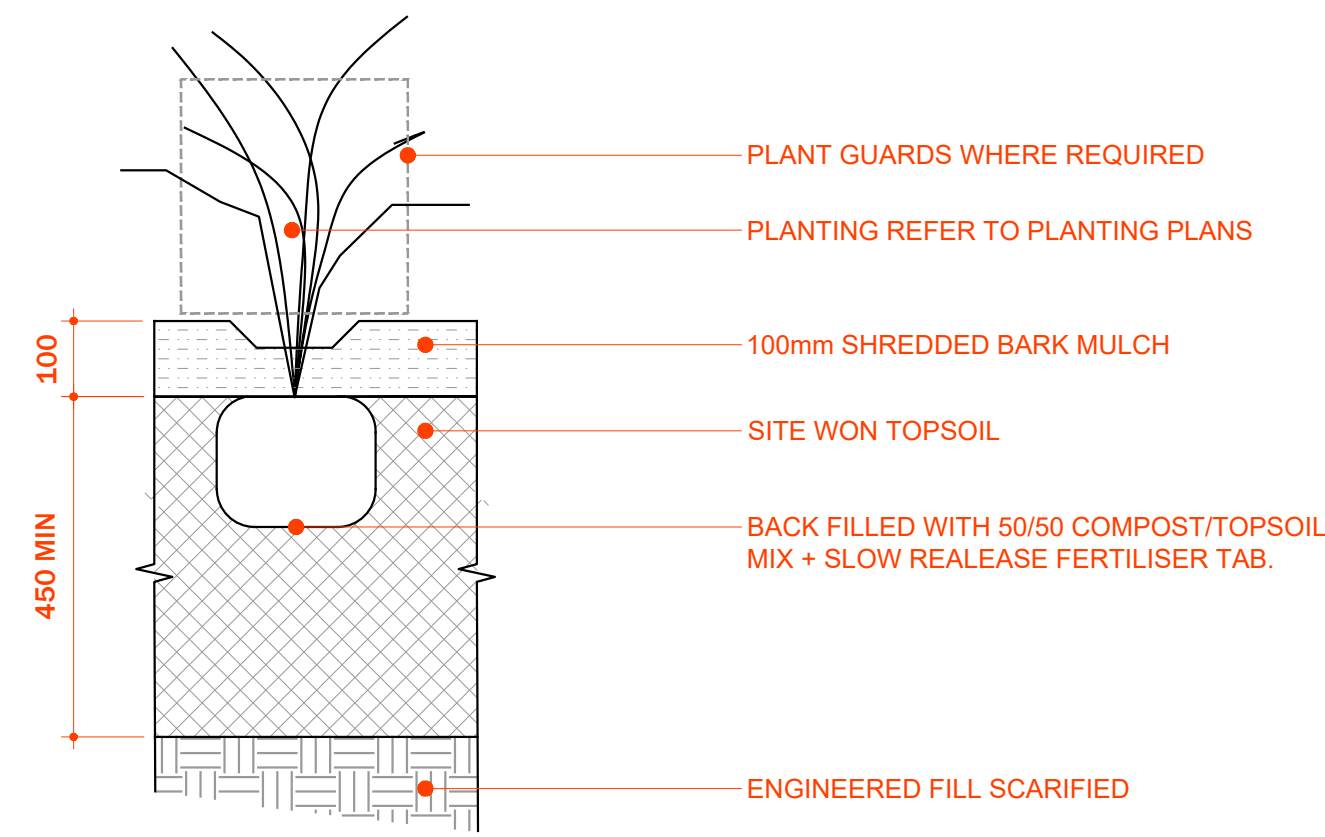




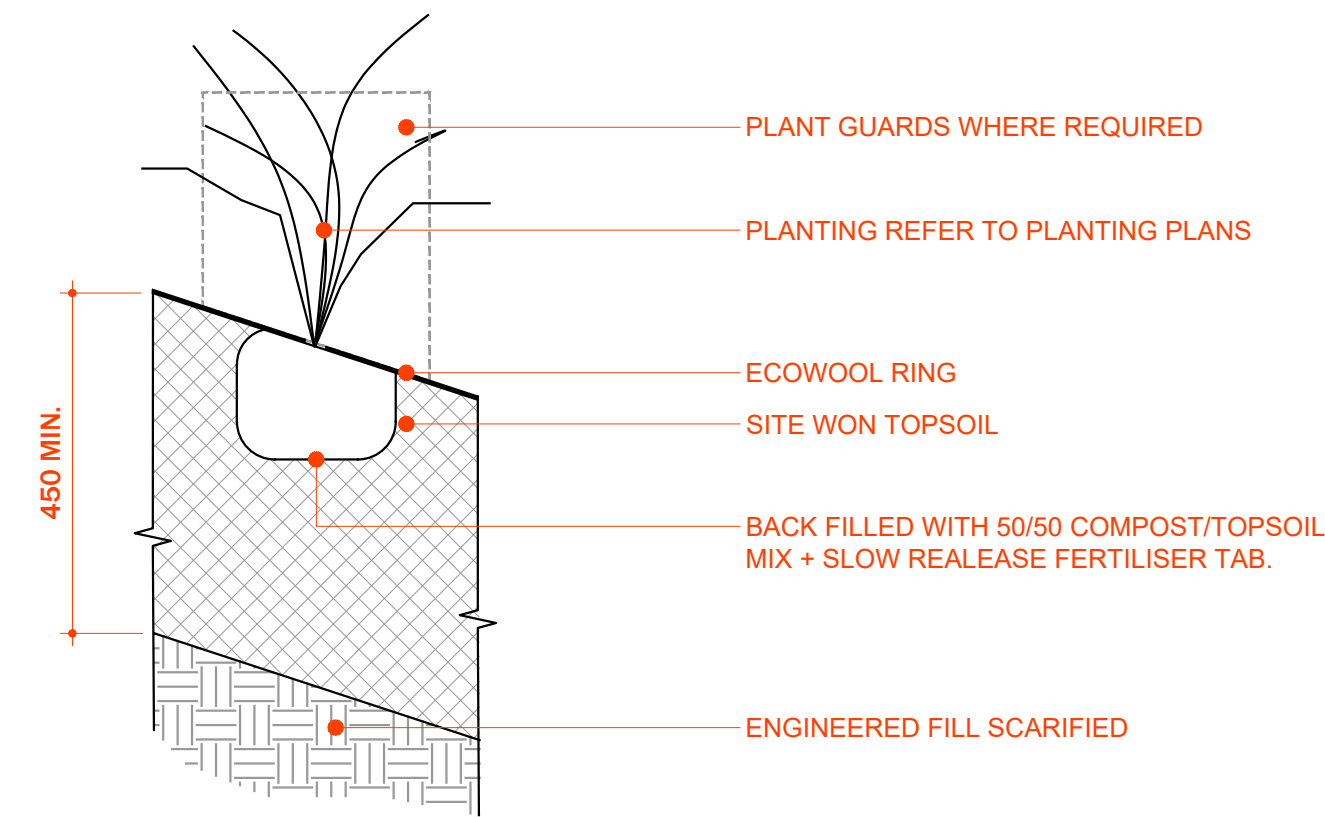
1 TYPICAL SPECIMEN TREE PIT DETAIL  
Scale: 1:10@ A1 1:20@ A3



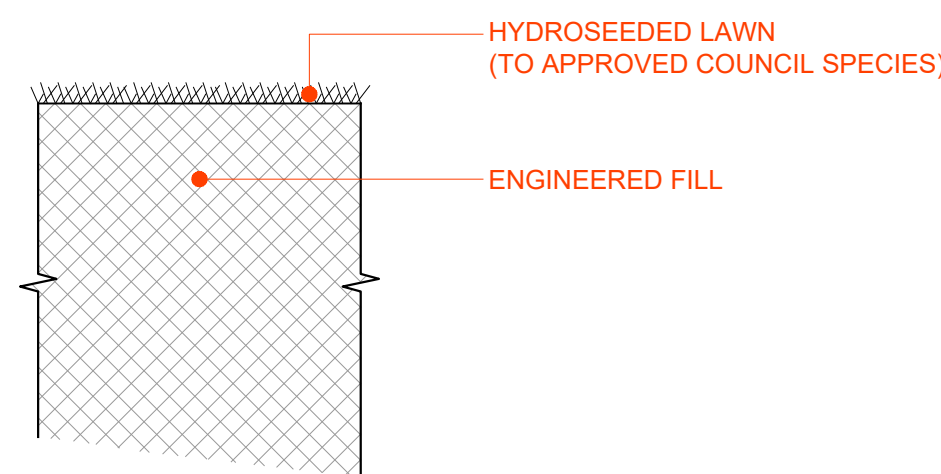
4 TYPICAL RAIN GARDEN DETAIL  
Scale: 1:10 @ A1 1:20@ A3



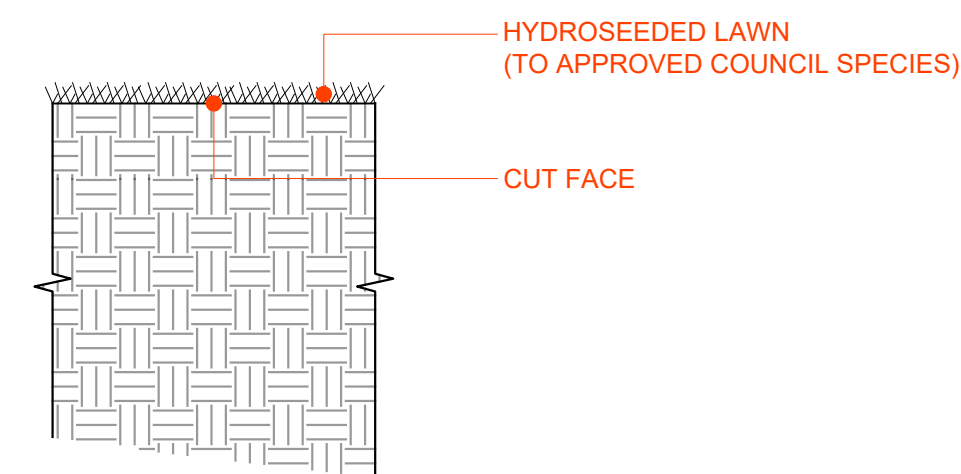
2 TYPICAL PLANTING BED DETAIL  
Scale: 1:10@ A1 1:20@ A3



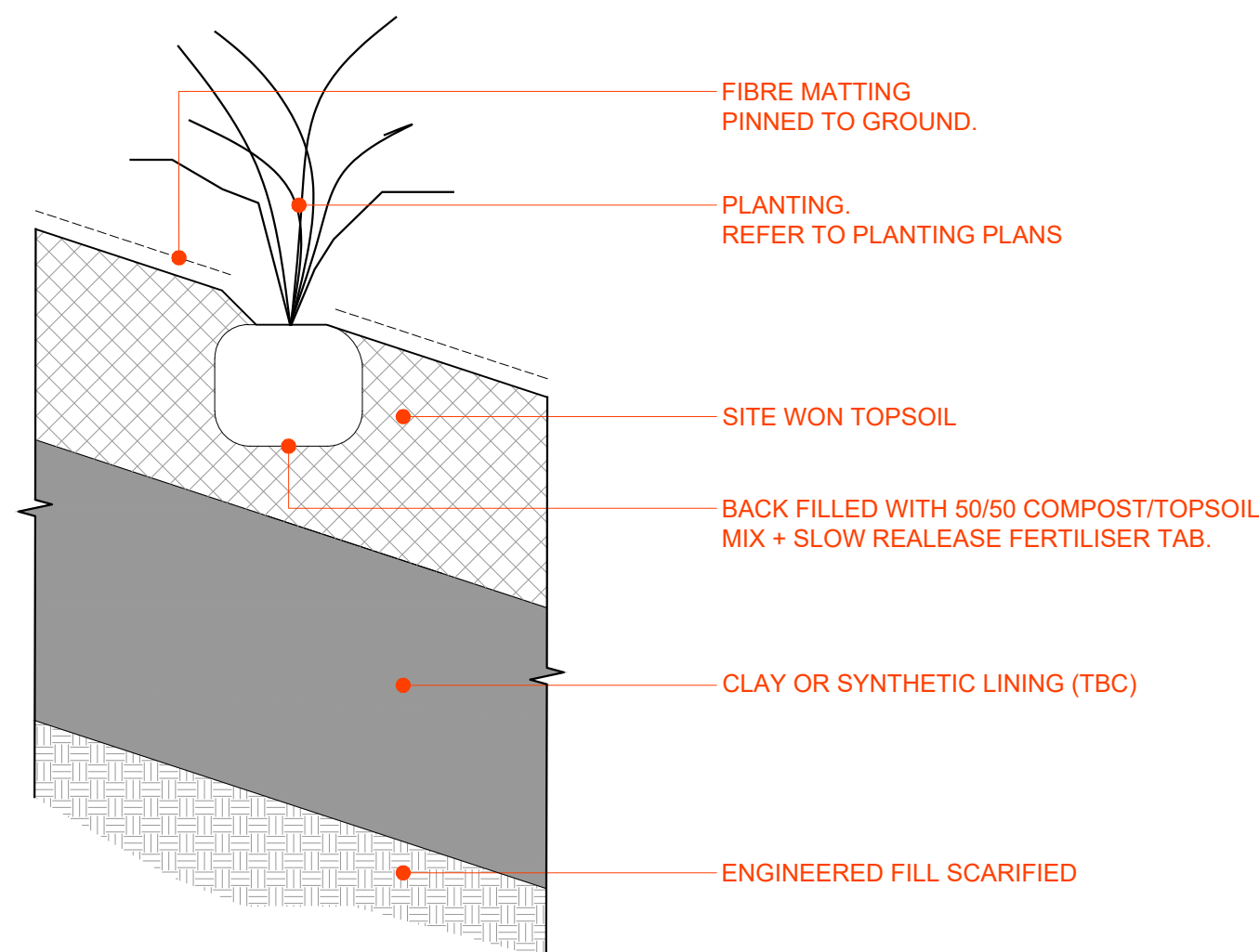
3 TYPICAL SLOPED PLANTING BED DETAIL  
Scale: 1:10@ A1 1:20@ A3



5 TYPICAL HYDROSEEDED GRASS DETAIL - ENGINEERED FILL  
Scale: 1:10 @ A1 1:20@ A3



6 TYPICAL HYDROSEEDED GRASS DETAIL - CUT FACE  
Scale: 1:10 @ A1 1:20@ A3



7 TYPICAL NEW RETENSION WETLAND DETAIL  
Scale: 1:10 @ A1 1:20@ A3



Plant Schedule: Mt Welcome - Street Planting										
Code	Botanical Name	Common/ Maori Name	Min Grade	Area (m²)	Percentage Mix	Quantity	Spacing guide	Spread at maturity (m)	Height at maturity (m)	Remarks
Specimen Trees										
Hp	<i>Hoheria populnea</i>	Houhere / Lacebark	25L	As shown	N/A	56	As shown	3	8	
Pe	<i>Pittosporum eugenoides</i>	Tarata / Lemonwood	25L			94		5	8	
Ae	<i>Alectryon excelsus</i>	Tiroki	25L			42		5	10	
St	<i>Sophora tetraptera</i>	Large Leaved Kōwhai	25L			34		4	10	
Pa	<i>Pseudopanax arboreus</i>	Whauwhaupaku / Five-finger	25L			34		3	5	
Pr	<i>Plagianthus regius</i>	Mānatu / Ribbonwood	25L			45		4	10	
Ke	<i>Kunzea ericoides</i>	Kānuka	25L			29		4	8	
Pc	<i>Pseudopanax crassifolius</i>	Horoeika / Lancewood	25L			9		3	5	
Pl	<i>Prochorus litoralis</i>	Tōtara	25L			1		5	20	
Ds	<i>Diospyrum spectabile</i>	Kohekohe	25L			1		6	10	
Ca	<i>Cordyline australis</i>	Ti Kōuka / Cabbage Tree	25L	9	3	8				
						354				
G1 Collector Streets - Across development Mix										
	<i>Poa cita</i>	Silver Tussock	PB3	1005	40%	5156	Ø 0.3m Ctrs	0.5	0.6	
	<i>Leptinella dioica</i>	Button Cotula	PB3		15%	309	Ø 0.75m Ctrs	1	0.1	
	<i>Veronica albicans</i>	Snow Hebe	PB3		30%	619	Ø 0.75m Ctrs	1	0.5	
	<i>Muehlenbeckia axillaris</i>	Creeping Pōhuehue	PB3		15%	309	Ø 0.75m Ctrs	1	0.2	
					100%	6394				
G2 Neighbourhood Streets - Lower Terrace Mix										
	<i>Veronica dielsii</i>	Smooth-leaved Hebe	PB3	1186	40%	540	Ø 1m Ctrs	1.5	1	
	<i>Goodenia radicans</i>	Remuemu	PB3		15%	91	Ø 1.5m Ctrs	2	0.2	
	<i>Liberlia grandiflora</i>	Mikoko / New Zealand Iris	PB5		30%	1644	Ø 0.5m Ctrs	0.75	0.6	
	<i>Coprosma acerosa</i>	Sand Coprosma	PB5		15%	365	Ø 0.75m Ctrs	1	1	
					100%	2648				
G3 Neighbourhood Streets - Upper Terrace Mix										
	<i>Astelia fragrans</i>	Kakaha / Bush flax	PB5	1841	40%	1512	Ø 0.75m Ctrs	1	1	
	<i>Acaena inermis purpurea</i>	Purple Bidibid	PB3		15%	567	Ø 0.75m Ctrs	1	0.1	
	<i>Hebe Wiri Mist</i>	Wiri Mist Hebe	PB3		30%	1134	Ø 0.75m Ctrs	1	1	
	<i>Coprosma acerosa</i>	Sand Coprosma	PB3		15%	567	Ø 0.75m Ctrs	1	1	
					100%	3780				
G4 Neighbourhood Streets - Lucas Block Mix										
	<i>Poa cita</i>	Silver Tussock	PB3	227	40%	1166	Ø 0.3m Ctrs	0.5	0.6	
	<i>Liberlia ixoides</i>	Yellow New Zealand Iris	PB5		15%	70	Ø 0.75m Ctrs	1	1	
	<i>Leptinella dioica</i>	Button Cotula	PB3		30%	140	Ø 0.75m Ctrs	1	0.1	
	<i>Scleranthus biflorus</i>	Canberra grass / Cushion Plant	PB3		15%	984	Ø 0.2m Ctrs	0.3	0.05	
					100%	2359				
G5 Neighbourhood Centre Mix										
	<i>Fuchsia procumbens</i>	Tōtara / Creeping Fuchsia	PB3	390	10%	82	Ø 0.75m Ctrs	1	0.05	
	<i>Phormium 'Emerald Gem'</i>	Emerald Gem Phormium	PB5		15%	276	Ø 0.5m Ctrs	0.7	0.6	
	<i>Hebe 'First Light'</i>	Nana' Hebe	PB3		5%	41	Ø 0.75m Ctrs	0.9	0.3	
	<i>Liberlia grandiflora</i>	Mikoko / New Zealand Iris	PB5		5%	41	Ø 0.75m Ctrs	0.9	0.6	
	<i>Astelia fragrans</i>	Kakaha / Bush flax	PB5		5%	41	Ø 0.75m Ctrs	1	1	
	<i>Veronica speciosa</i>	Purple Hebe	PB5		10%	82	Ø 0.75m Ctrs	1	1	
	<i>Leptinella dioica</i>	Button Cotula	PB3		10%	82	Ø 0.75m Ctrs	1	0.1	
	<i>Carex virgata</i>	Pukio / Swamp sedge	PB3		15%	122	Ø 0.75m Ctrs	1	1	
	<i>Muehlenbeckia axillaris</i>	Creeping Pōhuehue	PB3		10%	82	Ø 0.75m Ctrs	1	0.2	
	<i>Dianella nigra</i>	Tūtutu	PB5		15%	765	Ø 0.3m Ctrs	0.5	0.4	
					100%	1612				
G6 Parks and Reserves Mix										
	<i>Liberlia ixoides</i>	Yellow New Zealand Iris	PB5	1986	10%	408	Ø 0.75m Ctrs	1	1	
	<i>Coprosma 'Black Cloud'</i>	Coprosma, Black Cloud	PB5		10%	229	Ø 1m Ctrs	1.5	0.7	
	<i>Lobelia angulata</i>	Pānakenake	PB3		20%	204	Ø 1.5m Ctrs	2	0.1	
	<i>Parahebe catarractae 'Snow Cap'</i>	Snow Cap' Parahebe	PB3		10%	2548	Ø 0.3m Ctrs	0.5	0.5	
	<i>Arthropodium cirratum</i>	Rengarenga Lily	PB6		15%	612	Ø 0.75m Ctrs	1	1	
	<i>Apodasmia similis</i>	Oioi / Jointed Rush	PB3		10%	2548	Ø 0.3m Ctrs	0.5	0.6	
	<i>Phormium cookianum</i>	Wharariki / Mountain Flax	PB5		10%	229	Ø 1m Ctrs	1.5	2	
	<i>Dianella nigra</i>	Tūtutu	PB5		15%	3622	Ø 0.3m Ctrs	0.5	0.4	
					100%	10599				

blac.

MT. WELCOME

LANDSCAPE + ECOLOGY PLANS

Project No.0582025.11

20.11.2025

Revisions

FOR RESOURCE CONSENT

NOT FOR CONSTRUCTION

Disclaimer

Scale

PLANTING SCHEDULE 01

L5.0

NOTE: ALL QUANTITIES ARE UNDER REVIEW.

© 2025



SPECIMEN TREE PALETTE



KOHAKA POPULAE  
HOUEHE / LACEBARK



PITTOSPORIUM EUGENIODES  
TARATA / LEMONWOOD



ALECTRYON EXCELSUS  
TITOKI



SOPHORA TETRAPTERA  
LARGE LEAVED KOWHAI



PSEUDOPANAX ARBOREUS  
WHAUWHAUPAKU / FIVE-FINGER



PLAGIANTHUS RESUS  
MANATU / RIBBONWOOD



KUNZEA ERICOIDES  
KANUKA



PSEUDOPANAX CRASSIFOLIUS  
HOROKEA / LANCEWOOD



PODOCARPUS TOTARA  
TOTARA



DYSDOXYLUM SPECTABILE  
KOHAKOHE



CORDYLINE AUSTRALIS  
TI KOUKA / CABBAGE TREE

G1\_ COLLECTOR STREETS\_ ACROSS DEVELOPMENT



POA CITA  
SILVER TURSOCK



VERONICA ALBICANS  
SNOW HEBE



VERONICA DIGMIFOLIA  
SMOOTH LEAVED HEBE



LIBERTIA GRANDIFLORA  
MIKOKO / NEW ZEALAND IRIS



ASTELA FRAGRANS  
KAKAHA / BUSH FLAX



HEBE WIRI MIST  
WIRI MIST HEBE



POA CITA  
SILVER TURSOCK



LEPTINELLA DIOICA  
BUTTON COTULA



LEPTINELLA DIOICA  
BUTTON COTULA



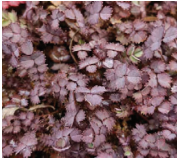
MUEHLNBERGIA AXILLARIS  
CREEPING POHUEHUE



SODODIMA RADICANS  
REMUREMU



COPROSMA ACEROSA  
SAND COPROSMA



ACACIA AERARIA PURPUREA  
PURPLE BIDIBID



COPROSMA BRUNNEA  
RED SAND COPROSMA

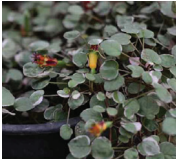


LIBERTIA DIOIDES  
YELLOW NEW ZEALAND IRIS



SCLERANTHUS BIFLORUS  
CUSHION PLANT

G5\_ NEIGHBOURHOOD CENTRE



FUCHSIA PROLIFERANS  
TOTARA / CREEPING FUCHSIA



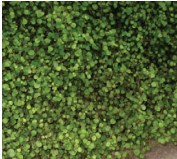
HEBE FIRST LIGHT  
NANK HEBE



ASTELA FRAGRANS  
KAKAHA / BUSH FLAX



LEPTINELLA DIOICA  
BUTTON COTULA



MUEHLNBERGIA AXILLARIS  
CREEPING POHUEHUE



LIBERTIA DIOIDES  
YELLOW NEW ZEALAND IRIS



LOBELIA ANGULATA  
PANAKENAKE



ANTHRACOCHEILUM ORNATUM  
RENGARENGA LILY



PHORMIUM COOKIANUM  
WHARARIRI / MOUNTAIN FLAX



PHORMIUM EMERALD GEM  
EMERALD GEM PHORMIUM



LIBERTIA GRANDIFLORA  
MIKOKO / NEW ZEALAND IRIS



VERONICA SPECIOSA  
PURPLE HEBE



CAREX VIRGATA  
PUNO / SWAMP BEDDIE



DANIELLA NIGRA  
TUIRUTU



COPROSMA 'BLACK CLOUD'  
COPROSMA



PARAKEHE CATAPRACTAE 'SNOW CAP'  
SNOW CAP PARAKEHE



APODASMA SIMILIS  
COW / JOINTED RUSH



DANIELLA NIGRA  
TUIRUTU

MT. WELCOME  
LANDSCAPE + ECOLOGY PLANS

Project No.058 2025.11



Revisions

FOR RESOURCE CONSENT

NOT FOR CONSTRUCTION

Disclaimer

This document has been prepared by Blue Limited on the following basis:  
A. It is based on the specific instructions provided to Blue Limited by the Client.  
B. It is for the Client's use in connection with the project.  
C. It is not to be used for any other purpose without the written consent of Blue Limited.  
D. Blue Limited does not accept any liability for the accuracy or completeness of the information provided to it by the Client.  
E. Blue Limited does not accept any liability for the accuracy or completeness of the information provided to it by the Client.  
F. It is not to be used for any other purpose without the written consent of Blue Limited.  
G. It is not to be used for any other purpose without the written consent of Blue Limited.  
H. It is not to be used for any other purpose without the written consent of Blue Limited.  
I. It is not to be used for any other purpose without the written consent of Blue Limited.  
J. It is not to be used for any other purpose without the written consent of Blue Limited.  
K. It is not to be used for any other purpose without the written consent of Blue Limited.  
L. It is not to be used for any other purpose without the written consent of Blue Limited.  
M. It is not to be used for any other purpose without the written consent of Blue Limited.  
N. It is not to be used for any other purpose without the written consent of Blue Limited.  
O. It is not to be used for any other purpose without the written consent of Blue Limited.  
P. It is not to be used for any other purpose without the written consent of Blue Limited.  
Q. It is not to be used for any other purpose without the written consent of Blue Limited.  
R. It is not to be used for any other purpose without the written consent of Blue Limited.  
S. It is not to be used for any other purpose without the written consent of Blue Limited.  
T. It is not to be used for any other purpose without the written consent of Blue Limited.  
U. It is not to be used for any other purpose without the written consent of Blue Limited.  
V. It is not to be used for any other purpose without the written consent of Blue Limited.  
W. It is not to be used for any other purpose without the written consent of Blue Limited.  
X. It is not to be used for any other purpose without the written consent of Blue Limited.  
Y. It is not to be used for any other purpose without the written consent of Blue Limited.  
Z. It is not to be used for any other purpose without the written consent of Blue Limited.

True North

Scale  
PLANTING  
PALETTE 01\_

L5.01

Sheet No. © 2025



Plant Schedule: Mt Welcome - General Planting										
Code	Botanical Name	Common/ Maori Name	Min Grade	Area (m²)	Percentage Mix	Quantity	Spacing guide	Spread at maturity (m)	Height at maturity (m)	Remarks
H1	Rain garden Mix									
	Carex oerinata	Rautahi / Cutty grass	PB5	6104	15%	1880	Ø0.75m Ctrs	1	1.2	
	Carex testacea	Orange New Zealand Sedoe	PB5		15%	4229	Ø0.5m Ctrs	0.6	0.45	
	Carex secta	Pūrei / New Zealand Sedoe	PB5		15%	1057	Ø1m Ctrs	1.5	1.5	
	Carex viroata	Pukio / Swamp Sedoe	PB5		15%	1880	Ø0.75m Ctrs	1	1	
	Cyperus ustulatus	Coastal Cutty Grass	PB5		20%	1410	Ø1m Ctrs	1.5	2	
	Carex lesssoniana	Rautahi	PB5		20%	1410	Ø1m Ctrs	1.5	1.5	
					100%	11865				
H2A	Retention Wetlands + Margins - Upper Bank Mix									
	Carex lesssoniana	Rautahi	PB5	21813	70%	70528	Ø0.5m Ctrs	1.5	1.5	
	Cyperus ustulatus	Coastal Cutty Grass	PB5		30%	7556	Ø1m Ctrs	1.5	2	
					100%	78085				
H2B	Retention Wetlands + Margins - Lower Bank / Aquatic Mix									
	Carex secta	Pūrei / New Zealand Sedoe	PB5	5099	50%	11777	Ø0.5m Ctrs	1.5	1.5	
	Carex viroata	Pukio / Swamp Sedoe	PB5		50%	11777	Ø0.5m Ctrs	1	1	
					100%	23555				
H3	Stormwater Reserve Arboretum Mix									
	Griselinia littoralis	New Zealand Broadleaf	PB5	10558	10%	305	Ø2m Ctrs	2.5	4	
	Pittosporum tenuifolium	Kōhūhū / Black Matipo	PB5		10%	195	Ø2.5m Ctrs	3	10	
	Pittosporum crassifolium	Karo	PB5		10%	135	Ø3m Ctrs	4	8	
	Phormium tenax	Harakeke / New Zealand Flax	PB5		10%	305	Ø2m Ctrs	3	3	
	Phormium cookianum	Wharariki / Mountain Flax	PB5		9%	1097	Ø1m Ctrs	1.5	2	
	Corosma robusta	Karamū	PB5		7%	213	Ø2m Ctrs	3	6	
	Myrsine australis	Red Matipo / Mācou	PB5		7%	213	Ø2m Ctrs	3	6	
	Leptospermum scoparium	Mānuka	PB5		7%	213	Ø2m Ctrs	3	5	
	Melicvyus ramiflorus	Māhoe	PB5		10%	135	Ø3m Ctrs	4	8	
	Muehlenbeckia astonii	Shrubby Tororaro	PB5		10%	1219	Ø1m Ctrs	1.5	2	
	Pittosporum euoenioides	Tarata / Lemonwood	PB5		10%	135	Ø3m Ctrs	4	6	
					100%	4168				
H4	Entrance Mix									
	Pseudopanax crassifolius	Horoeke / Lancewood	PB8	6201	8%	120	Ø2m Ctrs	3	5	
	Muehlenbeckia astonii	Shrubby Tororaro	PB5		8%	480	Ø1m Ctrs	1.5	2	
	Rhopalosiphium sapida	Nitau Palm	PB10		7%	47	Ø3m Ctrs	6	10	
	Carex testacea	Orange New Zealand Sedoe	PB5		8%	1922	Ø0.5m Ctrs	0.6	0.45	
	Corosma procinqua	Mingimiri	PB5		8%	120	Ø2m Ctrs	3	3	
	Myrsine sinclairii	Puka / Pukanui	PB8		7%	47	Ø3m Ctrs	4	5	
	Liberia grandiflora	Mānuka / New Zealand Iris	PB5		8%	1922	Ø0.5m Ctrs	0.75	0.6	
	Astelia fragrans	Kākaha / Bush flax	PB5		8%	854	Ø0.75m Ctrs	1	1	
	Kunzea ericoides	Kānuka	PB8		7%	47	Ø3m Ctrs	4	8	
	Muehlenbeckia axillaris	Creeping Pōhuehue	PB5		8%	854	Ø0.75m Ctrs	1	0.2	
	Corosma rharnioides	Twiggy Coprosma	PB5		8%	480	Ø1m Ctrs	2	3	
	Ficinia vortosa	Whāi	PB5		8%	854	Ø0.75m Ctrs	1	0.7	
	Pittosporum tenuifolium	Kōhūhū / Black Matipo	PB5		7%	105	Ø2m Ctrs	3	10	
					100%	7853				
H5	Access Lane + JOAL Mix									
	Pseudopanax crassifolius	Horoeke / Lancewood	PB5	1195	20%	69	Ø2m Ctrs	3	5	
	Liberia grandiflora	Mākoiki / New Zealand Iris	PB5		20%	1104	Ø0.5m Ctrs	0.75	0.6	
	Lobelia anoulata	Pānakenake	PB3		60%	368	Ø1.5m Ctrs	2	0.1	
					100%	1541				
H6	Fill Slopes + Residual Land Mix									
	Kunzea ericoides	Kānuka	PB5	100523	40%	5159	Ø3m Ctrs	4	8	
	Phormium Tenax	Harakeke / New Zealand Flax	PB5		60%	11143	Ø2.5m Ctrs	3	3	
					100%	16302				
Stage 2 - Enrichment Mix										
	Melicvyus ramiflorus	Māhoe	PB5	100523	8%	1032	Ø3m Ctrs	4	8	
	Eleocharis dentatus	Hirau	PB5		7%	903	Ø3m Ctrs	6	20	
	Beltschmedia lawa	Tawa	PB5		7%	903	Ø3m Ctrs	15	30	
	Cordylina australis	Ti Kōka / Cabbage Tree	PB5		7%	2031	Ø2m Ctrs	3	8	
	Aristotelia serrata	Makomako / Wineberry	PB5		7%	903	Ø3m Ctrs	4	10	
	Pterodryfilla racemosa	Kāmahi	PB5		7%	903	Ø3m Ctrs	10	25	
	Myrsine australis	Mācou / Red Matipo	PB5		7%	1300	Ø2.5m Ctrs	3	5	
	Pittosporum tenuifolium	Kōhūhū / Black Matipo	PB5		7%	1300	Ø2.5m Ctrs	3	10	
	Pittosporum crassifolium	Karo	PB5		7%	903	Ø3m Ctrs	4	8	
	Metrosideros robusta	Northern Rātā	PB5		7%	903	Ø3m Ctrs	6	20	
	Leptospermum scoparium	Mānuka	PB5		6%	1114	Ø2.5m Ctrs	3	5	
	Corosma robusta	Karamū	PB5		6%	1114	Ø2.5m Ctrs	3	6	
	Dacrydium cupressinum	Rimu	PB5		10%	1290	Ø3m Ctrs	10	25	
	Pittosporum euoenioides	Tarata / Lemonwood	PB5		7%	903	Ø3m Ctrs	4	6	
					100%	15501				
H7	SNA 5m Buffer Mix									
	Corosma lucida	Karamū / Shining karamū	PB5	3099	10%	358	Ø1m Ctrs	2.5	6	
	Corosma rharnioides	Twiggy Coprosma	PB5		10%	358	Ø1m Ctrs	2	3	
	Griselinia lucida	Akaroa / Shining broadleaf	PB5		5%	179	Ø1m Ctrs	2	5	
	Melicope ternata	Whararaoi	PB8		10%	89	Ø2m Ctrs	3	5	
	Myrsine australis	Red Matipo / Mācou	PB5		5%	179	Ø1m Ctrs	3	6	
	Shorea paniculata	Akaroa	PB8		5%	89	Ø2m Ctrs	3	5	
	Pseudopanax arboreus	Whauwhauaku / Five-finger	25L		10%	358	Ø1m Ctrs	3	5	
	Melicvyus ramiflorus	Māhoe	PB5		5%	20	Ø3m Ctrs	4	8	
	Myoporium laetum	Naoio	PB8		5%	45	Ø2m Ctrs	3.5	6	
	Placianthus reclus	Mānuka / Ribbonwood	25L		10%	40	Ø3m Ctrs	4	10	
	Hoheria populnea	Houhere / Lacebark	25L		10%	89	Ø2m Ctrs	3	8	
	Phormium tenax	Harakeke / New Zealand Flax	PB5		10%	89	Ø2m Ctrs	3	3	
					100%	1893				
H8	SNA Fill Mix									
	Corosma lucida	Karamū / Shining karamū	PB5	4810	10%	555	Ø1m Ctrs	2.5	6	
	Corosma rharnioides	Twiggy Coprosma	PB5		10%	555	Ø1m Ctrs	2	3	
	Griselinia lucida	Akaroa / Shining broadleaf	PB5		5%	278	Ø1m Ctrs	2	5	
	Melicope ternata	Whararaoi	PB8		10%	139	Ø2m Ctrs	3	5	
	Myrsine australis	Red Matipo / Mācou	PB5		5%	278	Ø1m Ctrs	3	6	
	Shorea paniculata	Akaroa	PB8		5%	139	Ø2m Ctrs	3	5	
	Pseudopanax arboreus	Whauwhauaku / Five-finger	25L		10%	555	Ø1m Ctrs	3	5	
	Melicvyus ramiflorus	Māhoe	PB5		5%	31	Ø3m Ctrs	4	8	
	Myoporium laetum	Naoio	PB8		5%	69	Ø2m Ctrs	3.5	6	
	Placianthus reclus	Mānuka / Ribbonwood	25L		10%	40	Ø3m Ctrs	4	10	
	Hoheria populnea	Houhere / Lacebark	25L		10%	139	Ø2m Ctrs	3	8	
Phormium tenax	Harakeke / New Zealand Flax	PB5	10%		139	Ø2m Ctrs	3	3		
					100%	2939				
H9	Lizard Relocation Offset Areas Mix (Based off 20% of Total Area)									
	Ozothamnus leptophyllus	Tauhunu	PB5	6717	25%	172	Ø1.5m Ctrs	2	2	Scattered in clusters of 3
	Corosma procinqua	Mingimiri	PB5		25%	172	Ø1.5m Ctrs	1.5	3	Scattered in clusters of 3
	Muehlenbeckia complexa	Pōhuehue	PB5		50%	345	Ø1.5m Ctrs	2	2	Scattered in clusters of 10
					100%	689				

NOTE: ALL QUANTITIES ARE UNDER REVIEW.

blac.

MT. WELCOME  
LANDSCAPE + ECOLOGY PLANS

Project No.0582025.11

20.11.2025

Revisions  
FOR RESOURCE CONSULT

NOT FOR CONSTRUCTION

Disclaimer  
This document has been prepared by Blue Limited on the following basis:  
A. It is based on the specific instructions provided to Blue Limited by the client.  
B. It is for the client's use only and is not to be used for any other purpose.  
C. Blue Limited does not warrant that the information provided is accurate, complete or up to date.  
D. Blue Limited does not warrant that the information provided is accurate, complete or up to date.  
E. Blue Limited does not warrant that the information provided is accurate, complete or up to date.  
F. Blue Limited does not warrant that the information provided is accurate, complete or up to date.  
G. Blue Limited does not warrant that the information provided is accurate, complete or up to date.  
H. Blue Limited does not warrant that the information provided is accurate, complete or up to date.  
I. Blue Limited does not warrant that the information provided is accurate, complete or up to date.  
J. Blue Limited does not warrant that the information provided is accurate, complete or up to date.  
K. Blue Limited does not warrant that the information provided is accurate, complete or up to date.  
L. Blue Limited does not warrant that the information provided is accurate, complete or up to date.  
M. Blue Limited does not warrant that the information provided is accurate, complete or up to date.  
N. Blue Limited does not warrant that the information provided is accurate, complete or up to date.  
O. Blue Limited does not warrant that the information provided is accurate, complete or up to date.  
P. Blue Limited does not warrant that the information provided is accurate, complete or up to date.  
Q. Blue Limited does not warrant that the information provided is accurate, complete or up to date.  
R. Blue Limited does not warrant that the information provided is accurate, complete or up to date.  
S. Blue Limited does not warrant that the information provided is accurate, complete or up to date.  
T. Blue Limited does not warrant that the information provided is accurate, complete or up to date.  
U. Blue Limited does not warrant that the information provided is accurate, complete or up to date.  
V. Blue Limited does not warrant that the information provided is accurate, complete or up to date.  
W. Blue Limited does not warrant that the information provided is accurate, complete or up to date.  
X. Blue Limited does not warrant that the information provided is accurate, complete or up to date.  
Y. Blue Limited does not warrant that the information provided is accurate, complete or up to date.  
Z. Blue Limited does not warrant that the information provided is accurate, complete or up to date.  
AA. Blue Limited does not warrant that the information provided is accurate, complete or up to date.  
AB. Blue Limited does not warrant that the information provided is accurate, complete or up to date.  
AC. Blue Limited does not warrant that the information provided is accurate, complete or up to date.  
AD. Blue Limited does not warrant that the information provided is accurate, complete or up to date.  
AE. Blue Limited does not warrant that the information provided is accurate, complete or up to date.  
AF. Blue Limited does not warrant that the information provided is accurate, complete or up to date.  
AG. Blue Limited does not warrant that the information provided is accurate, complete or up to date.  
AH. Blue Limited does not warrant that the information provided is accurate, complete or up to date.  
AI. Blue Limited does not warrant that the information provided is accurate, complete or up to date.  
AJ. Blue Limited does not warrant that the information provided is accurate, complete or up to date.  
AK. Blue Limited does not warrant that the information provided is accurate, complete or up to date.  
AL. Blue Limited does not warrant that the information provided is accurate, complete or up to date.  
AM. Blue Limited does not warrant that the information provided is accurate, complete or up to date.  
AN. Blue Limited does not warrant that the information provided is accurate, complete or up to date.  
AO. Blue Limited does not warrant that the information provided is accurate, complete or up to date.  
AP. Blue Limited does not warrant that the information provided is accurate, complete or up to date.  
AQ. Blue Limited does not warrant that the information provided is accurate, complete or up to date.  
AR. Blue Limited does not warrant that the information provided is accurate, complete or up to date.  
AS. Blue Limited does not warrant that the information provided is accurate, complete or up to date.  
AT. Blue Limited does not warrant that the information provided is accurate, complete or up to date.  
AU. Blue Limited does not warrant that the information provided is accurate, complete or up to date.  
AV. Blue Limited does not warrant that the information provided is accurate, complete or up to date.  
AW. Blue Limited does not warrant that the information provided is accurate, complete or up to date.  
AX. Blue Limited does not warrant that the information provided is accurate, complete or up to date.  
AY. Blue Limited does not warrant that the information provided is accurate, complete or up to date.  
AZ. Blue Limited does not warrant that the information provided is accurate, complete or up to date.  
BA. Blue Limited does not warrant that the information provided is accurate, complete or up to date.  
BB. Blue Limited does not warrant that the information provided is accurate, complete or up to date.  
BC. Blue Limited does not warrant that the information provided is accurate, complete or up to date.  
BD. Blue Limited does not warrant that the information provided is accurate, complete or up to date.  
BE. Blue Limited does not warrant that the information provided is accurate, complete or up to date.  
BF. Blue Limited does not warrant that the information provided is accurate, complete or up to date.  
BG. Blue Limited does not warrant that the information provided is accurate, complete or up to date.  
BH. Blue Limited does not warrant that the information provided is accurate, complete or up to date.  
BI. Blue Limited does not warrant that the information provided is accurate, complete or up to date.  
BJ. Blue Limited does not warrant that the information provided is accurate, complete or up to date.  
BK. Blue Limited does not warrant that the information provided is accurate, complete or up to date.  
BL. Blue Limited does not warrant that the information provided is accurate, complete or up to date.  
BM. Blue Limited does not warrant that the information provided is accurate, complete or up to date.  
BN. Blue Limited does not warrant that the information provided is accurate, complete or up to date.  
BO. Blue Limited does not warrant that the information provided is accurate, complete or up to date.  
BP. Blue Limited does not warrant that the information provided is accurate, complete or up to date.  
BQ. Blue Limited does not warrant that the information provided is accurate, complete or up to date.  
BR. Blue Limited does not warrant that the information provided is accurate, complete or up to date.  
BS. Blue Limited does not warrant that the information provided is accurate, complete or up to date.  
BT. Blue Limited does not warrant that the information provided is accurate, complete or up to date.  
BU. Blue Limited does not warrant that the information provided is accurate, complete or up to date.  
BV. Blue Limited does not warrant that the information provided is accurate, complete or up to date.  
BW. Blue Limited does not warrant that the information provided is accurate, complete or up to date.  
BX. Blue Limited does not warrant that the information provided is accurate, complete or up to date.  
BY. Blue Limited does not warrant that the information provided is accurate, complete or up to date.  
BZ. Blue Limited does not warrant that the information provided is accurate, complete or up to date.  
CA. Blue Limited does not warrant that the information provided is accurate, complete or up to date.  
CB. Blue Limited does not warrant that the information provided is accurate, complete or up to date.  
CC. Blue Limited does not warrant that the information provided is accurate, complete or up to date.  
CD. Blue Limited does not warrant that the information provided is accurate, complete or up to date.  
CE. Blue Limited does not warrant that the information provided is accurate, complete or up to date.  
CF. Blue Limited does not warrant that the information provided is accurate, complete or up to date.  
CG. Blue Limited does not warrant that the information provided is accurate, complete or up to date.  
CH. Blue Limited does not warrant that the information provided is accurate, complete or up to date.  
CI. Blue Limited does not warrant that the information provided is accurate, complete or up to date.  
CJ. Blue Limited does not warrant that the information provided is accurate, complete or up to date.  
CK. Blue Limited does not warrant that the information provided is accurate, complete or up to date.  
CL. Blue Limited does not warrant that the information provided is accurate, complete or up to date.  
CM. Blue Limited does not warrant that the information provided is accurate, complete or up to date.  
CN. Blue Limited does not warrant that the information provided is accurate, complete or up to date.  
CO. Blue Limited does not warrant that the information provided is accurate, complete or up to date.  
CP. Blue Limited does not warrant that the information provided is accurate, complete or up to date.  
CQ. Blue Limited does not warrant that the information provided is accurate, complete or up to date.  
CR. Blue Limited does not warrant that the information provided is accurate, complete or up to date.  
CS. Blue Limited does not warrant that the information provided is accurate, complete or up to date.  
CT. Blue Limited does not warrant that the information provided is accurate, complete or up to date.  
CU. Blue Limited does not warrant that the information provided is accurate, complete or up to date.  
CV. Blue Limited does not warrant that the information provided is accurate, complete or up to date.  
CW. Blue Limited does not warrant that the information provided is accurate, complete or up to date.  
CX. Blue Limited does not warrant that the information provided is accurate, complete or up to date.  
CY. Blue Limited does not warrant that the information provided is accurate, complete or up to date.  
CZ. Blue Limited does not warrant that the information provided is accurate, complete or up to date.  
DA. Blue Limited does not warrant that the information provided is accurate, complete or up to date.  
DB. Blue Limited does not warrant that the information provided is accurate, complete or up to date.  
DC. Blue Limited does not warrant that the information provided is accurate, complete or up to date.  
DD. Blue Limited does not warrant that the information provided is accurate, complete or up to date.  
DE. Blue Limited does not warrant that the information provided is accurate, complete or up to date.  
DF. Blue Limited does not warrant that the information provided is accurate, complete or up to date.  
DG. Blue Limited does not warrant that the information provided is accurate, complete or up to date.  
DH. Blue Limited does not warrant that the information provided is accurate, complete or up to date.  
DI. Blue Limited does not warrant that the information provided is accurate, complete or up to date.  
DJ. Blue Limited does not warrant that the information provided is accurate, complete or up to date.  
DK. Blue Limited does not warrant that the information provided is accurate, complete or up to date.  
DL. Blue Limited does not warrant that the information provided is accurate, complete or up to date.  
DM. Blue Limited does not warrant that the information provided is accurate, complete or up to date.  
DN. Blue Limited does not warrant that the information provided is accurate, complete or up to date.  
DO. Blue Limited does not warrant that the information provided is accurate, complete or up to date.  
DP. Blue Limited does not warrant that the information provided is accurate, complete or up to date.  
DQ. Blue Limited does not warrant that the information provided is accurate, complete or up to date.  
DR. Blue Limited does not warrant that the information provided is accurate, complete or up to date.  
DS. Blue Limited does not warrant that the information provided is accurate, complete or up to date.  
DT. Blue Limited does not warrant that the information provided is accurate, complete or up to date.  
DU. Blue Limited does not warrant that the information provided is accurate, complete or up to date.  
DV. Blue Limited does not warrant that the information provided is accurate, complete or up to date.  
DW. Blue Limited does not warrant that the information provided is accurate, complete or up to date.  
DX. Blue Limited does not warrant that the information provided is accurate, complete or up to date.  
DY. Blue Limited does not warrant that the information provided is accurate, complete or up to date.<







H6\_
FILL SLOPES + RESIDUAL LAND



KUNZEA ERICOIDES
KĀNUKA

STAGE 2 - ERICHMENT



MELICYTUS RAMIFLORUS
MĀHOE



BEILSCHMIEDIA TAWA
TAWA



ARISTOTELIA SERRATA
MĀNĀMĀNOA / WINEBERRY



MYRSINE AUSTRALIS
MĀPOU / RED MATIPO



PITTOSPORUM CRASSIFOLIUM
KARO



LEPTOSPERMUM SCOPARIUM
MĀNUKA



DACRYDIUM CUPRESSINUM
RIMU



PHORMIUM TENAX
HARAKEKE / NEW ZEALAND FLAX



ELEAOCARPUS DENTATUS
HINAU



CORDYLINE AUSTRALIS
TĪKŌKA / CABBAGE TREE



PTEROPHYLLA RACEMOSA
KĀMAHI



PITTOSPORUM TENUIFOLIUM
KŌHOHI / BLACK MATIPO



METROSIDEROS ROBUSTA
NORTHERN RĀTĀ



COPROSMA ROBUSTA
KARAMI



PITTOSPORUM EUGENIODES
TARATA / LEMONWOOD

H7\_
SNA 5m BUFFER MIX



COPROSMA LUCIDA
KARAMI / SHINING KARAMI



GRISELINIA LUCIDA
AKAPUNA / SHINING BROADLEAF



MYRSINE AUSTRALIS
RED MATIPO / MĀPOU



PSEUDOPANAX ARBOREUS
WHAUWHAUPAKU / FIVE-FINGER



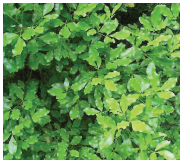
MYOPORUM LAETUM
NGAO



HOHERIA POPULNEA
HOULHERE / LACEBARK



COPROSMA RHYMNOIDES
TWIGGY COPROSMA



MELICOPE TERNATA
WHARANGI



SMILAX PANICULATA
AKORAHŌ



MELICYTUS RAMIFLORUS
MĀHOE



PLAGIANTHUS REIDII
MĀNATU / RIBBONWOOD



PHORMIUM TENAX
HARAKEKE / NEW ZEALAND FLAX

blac.

MT. WELCOME

LANDSCAPE + ECOLOGY PLANS

Prepared by Thomas W. Williams

Project No.058

2025.11



Revisions

FOR RESOURCE CONSENT

NOT FOR CONSTRUCTION

Disclaimer

This document has been prepared by Blac Limited on the following basis:
A. It is based on the specific instructions provided to Blac Limited by the client.
B. It is to be used by the client's clients and is not to be used for any other purpose.
C. It is to be used by the client's clients and is not to be used for any other purpose.
D. It is to be used by the client's clients and is not to be used for any other purpose.
E. It is to be used by the client's clients and is not to be used for any other purpose.
F. It is to be used by the client's clients and is not to be used for any other purpose.
G. It is to be used by the client's clients and is not to be used for any other purpose.
H. It is to be used by the client's clients and is not to be used for any other purpose.
I. It is to be used by the client's clients and is not to be used for any other purpose.
J. It is to be used by the client's clients and is not to be used for any other purpose.
K. It is to be used by the client's clients and is not to be used for any other purpose.
L. It is to be used by the client's clients and is not to be used for any other purpose.
M. It is to be used by the client's clients and is not to be used for any other purpose.
N. It is to be used by the client's clients and is not to be used for any other purpose.
O. It is to be used by the client's clients and is not to be used for any other purpose.
P. It is to be used by the client's clients and is not to be used for any other purpose.
Q. It is to be used by the client's clients and is not to be used for any other purpose.
R. It is to be used by the client's clients and is not to be used for any other purpose.
S. It is to be used by the client's clients and is not to be used for any other purpose.
T. It is to be used by the client's clients and is not to be used for any other purpose.
U. It is to be used by the client's clients and is not to be used for any other purpose.
V. It is to be used by the client's clients and is not to be used for any other purpose.
W. It is to be used by the client's clients and is not to be used for any other purpose.
X. It is to be used by the client's clients and is not to be used for any other purpose.
Y. It is to be used by the client's clients and is not to be used for any other purpose.
Z. It is to be used by the client's clients and is not to be used for any other purpose.

True North

Scale

PLANTING
PALETTE 03\_

L5.04

Sheet No.

© 2025



H8\_ SNA FILL MIX



ALECTRYON EXCELSUS  
TĪTĪKI



COPROSMA AREOLATA  
WHIN-LEAVED COPROSMA



COPROSMA RHAMNOIDES  
TIWITI COPROSMA



DYSOSKYLUM SPECTABILE  
KŌHĒKŌHE



KNIGHTIA EXCELSA  
REWAREWA / NZ HONEYSUCKLE



MELICOPE TERNATA  
WHARRANGI



MYRSINE AUSTRALIS  
RED MATIPO / MĀPOU



PENNANTIA CORYMBOSA  
KĀHŌKĀMŌ



PSEUDOPANAX ARBOREUS  
WHĀWHĀUPARAU / FIVE-FINGER



BEILSCHMIEDIA TAWA  
TAWA



COPROSMA GRANDIFOLIA  
KĀNŌNGI



COPROSMA ROBUSTA  
KARAMŌ



ELAEOCARPUS DENTATUS  
HĪNAU



KUNZEA ERICOIDES  
KĀNUKA



MYOPORUM LAETUM  
NGĀIO



SHAWIA PANICULATA  
AKIRAHŌ



PITTOSPORUM TENUIFOLIUM  
KŌHĒHŌ / BLACK MATIPO



SOPHORA MICROPHYLLA  
KŌWHIRI / SMALL LEAVED KŌWHIRI



BRACHYGLOTTIS REPENS  
RANGIORA



COPROSMA LUCIDA  
KARAMŌ / SHINING KARAMŌ



CORDYLINAE AUSTRALIS  
TĪKŌKA / CABBAGE TREE



GRISELINIA LUCIDA  
AKĀPUKA / SHINING BROADLEAF

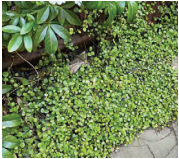
H9\_ LIZARD RELOCATION OFFSET AREAS MIX



OZOTHAMNUS LEPTOPHYLLUS  
TAUHŪ



COPROSMA PROPINQUA  
MINIMŌNGI



MUEHLENBECKIA COMPLEXA  
POHUEHUE

blac.

MT. WELCOME  
LANDSCAPE + ECOLOGY PLANS

Prepared by Thomas W. Williams

Project No.058

2025.11



Revisions

FOR RESOURCE CONSENT

NOT FOR CONSTRUCTION

Disclaimer

This document has been prepared by Blac Limited on the following basis:  
A. It is based on the specific instructions provided to Blac Limited by the client.  
B. It is for the client's use only and is not to be used for any other purpose.  
C. Blac Limited does not warrant the accuracy or completeness of the information provided to it by the client or any third party.  
D. Blac Limited does not warrant the accuracy or completeness of the information provided to it by the client or any third party.  
E. Blac Limited does not warrant the accuracy or completeness of the information provided to it by the client or any third party.  
F. Blac Limited does not warrant the accuracy or completeness of the information provided to it by the client or any third party.  
G. Blac Limited does not warrant the accuracy or completeness of the information provided to it by the client or any third party.  
H. Blac Limited does not warrant the accuracy or completeness of the information provided to it by the client or any third party.  
I. Blac Limited does not warrant the accuracy or completeness of the information provided to it by the client or any third party.  
J. Blac Limited does not warrant the accuracy or completeness of the information provided to it by the client or any third party.  
K. Blac Limited does not warrant the accuracy or completeness of the information provided to it by the client or any third party.  
L. Blac Limited does not warrant the accuracy or completeness of the information provided to it by the client or any third party.  
M. Blac Limited does not warrant the accuracy or completeness of the information provided to it by the client or any third party.  
N. Blac Limited does not warrant the accuracy or completeness of the information provided to it by the client or any third party.  
O. Blac Limited does not warrant the accuracy or completeness of the information provided to it by the client or any third party.  
P. Blac Limited does not warrant the accuracy or completeness of the information provided to it by the client or any third party.  
Q. Blac Limited does not warrant the accuracy or completeness of the information provided to it by the client or any third party.  
R. Blac Limited does not warrant the accuracy or completeness of the information provided to it by the client or any third party.  
S. Blac Limited does not warrant the accuracy or completeness of the information provided to it by the client or any third party.  
T. Blac Limited does not warrant the accuracy or completeness of the information provided to it by the client or any third party.  
U. Blac Limited does not warrant the accuracy or completeness of the information provided to it by the client or any third party.  
V. Blac Limited does not warrant the accuracy or completeness of the information provided to it by the client or any third party.  
W. Blac Limited does not warrant the accuracy or completeness of the information provided to it by the client or any third party.  
X. Blac Limited does not warrant the accuracy or completeness of the information provided to it by the client or any third party.  
Y. Blac Limited does not warrant the accuracy or completeness of the information provided to it by the client or any third party.  
Z. Blac Limited does not warrant the accuracy or completeness of the information provided to it by the client or any third party.

True North

Scale

PLANTING  
PALETTE 04\_

L5.05

Sheet No.

© 2025