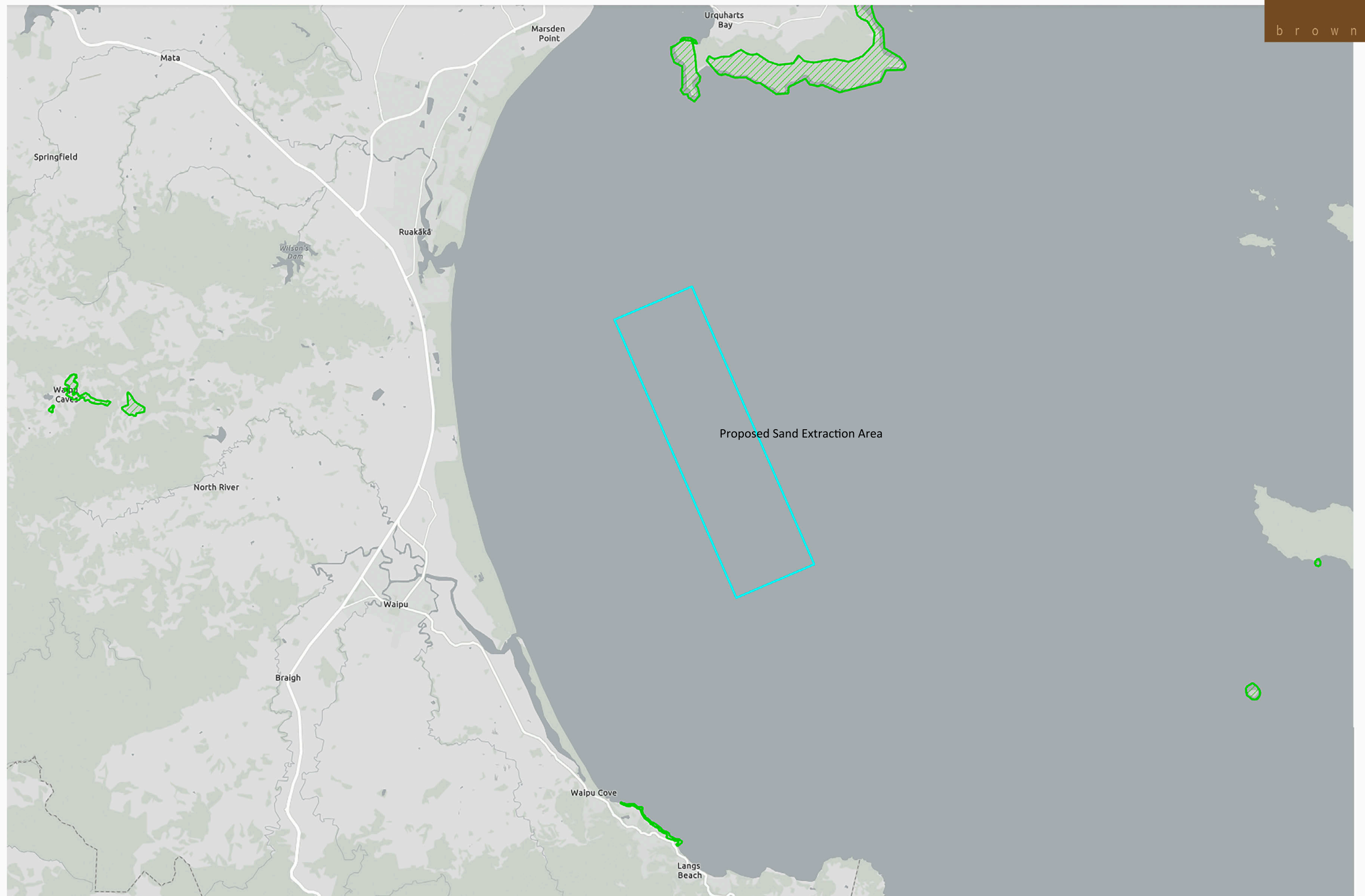
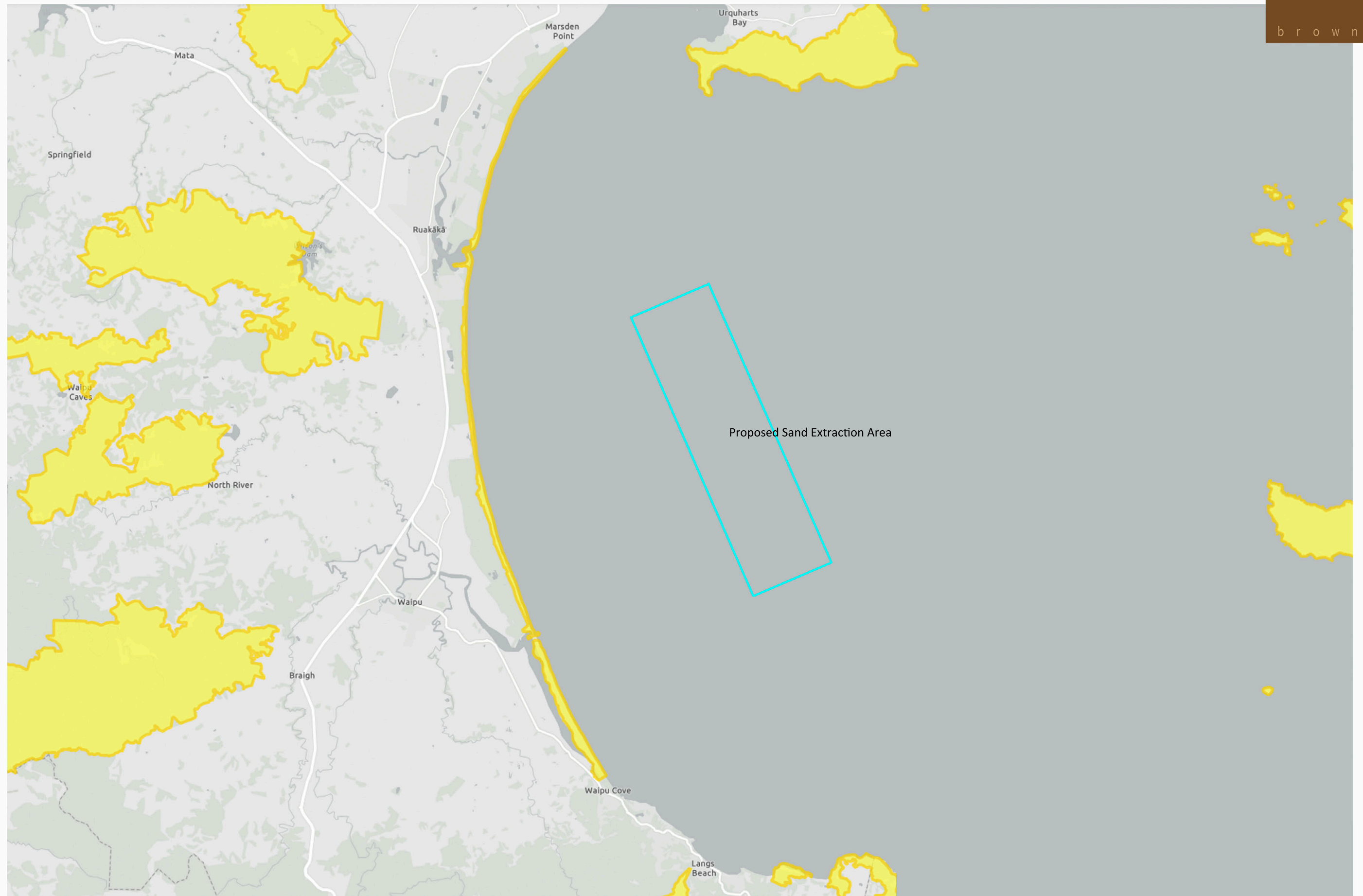


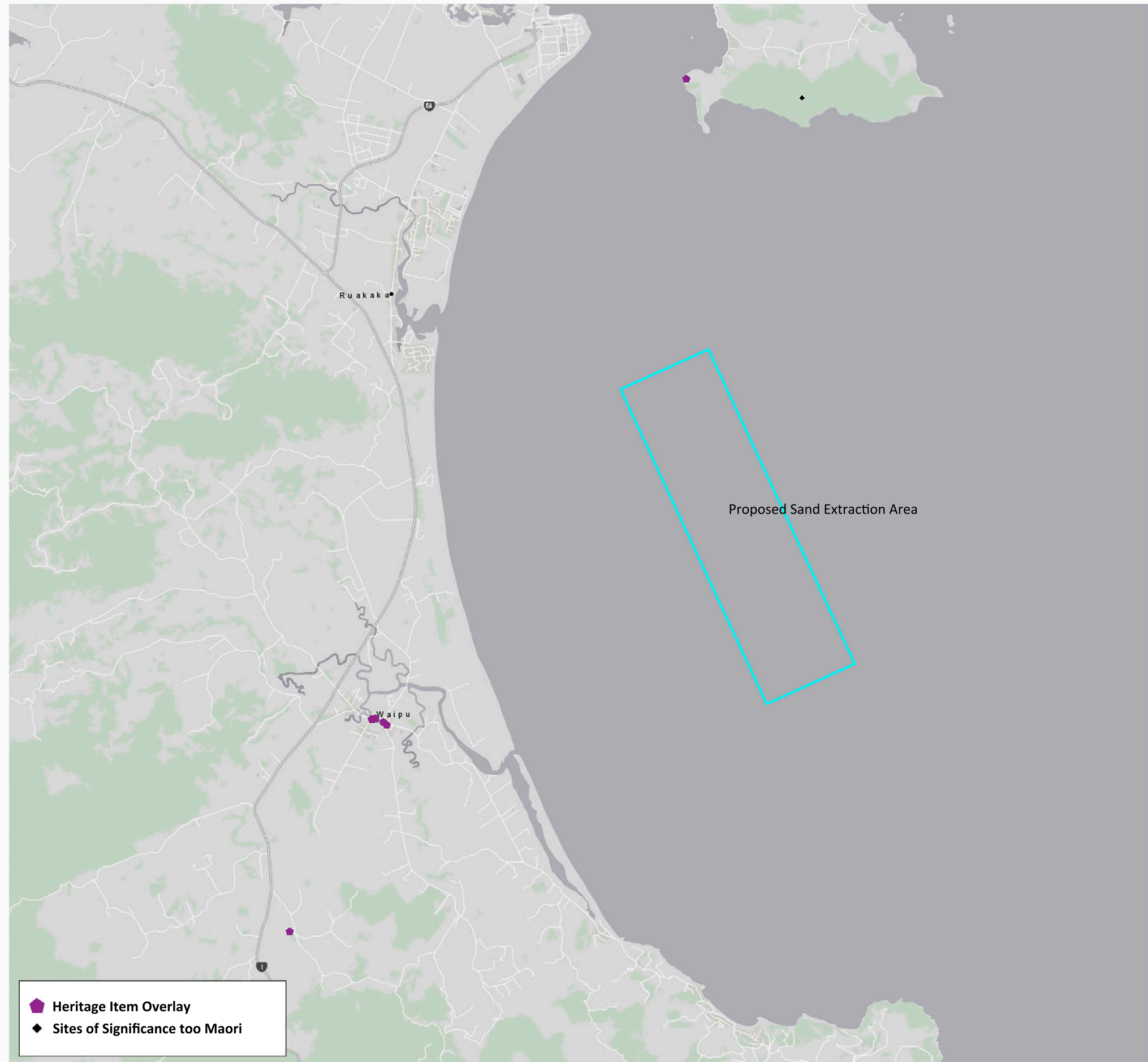


Outstanding Natural Landscapes

■







- Heritage Item Overlay
- Sites of Significance to Maori



Figure 4: Patuhakeke Sites of Significance Overlay



Photo Locations:

- A** Mair Road Beachfront Car Park (next to Photopoints 8 & 9)
- B** Viewing Platform Next To Ruakaka Surf Life Saving Club (& Photopoint 33)
- C** Uretiti Beach Camping Ground Beachfront (next to Photopoints 34 & 35)
- D** Waipu Cove Beachfront (next to Photopoint 48)

All photos were taken with a Sony A7RV (full frame) camera and a 50mm (SLR equivalent) lens on the afternoon of the 15th May 2024 and the evening of the 16th May.



Panorama Without the William Fraser (above) & With The William Fraser (below)

Each image comprises four 50mm (SLR equivalent) photos taken with a Sony A7RV (full frame) camera at 1.58pm on the 16th May 2024: the lower panorama shows the William Fraser at Point (a) near the centre of the photo, together with a freighter at anchor to the right



Single-frame 50mm (SLR equivalent) photo taken with a Sony A7RV (full frame) camera at 1.58pm on the 16th May 2024 - showing the William Fraser at Point (a) in the centre of the photo and a freighter at anchor to the right



Panorama Without the William Fraser (above) & With The William Fraser (below)

Each image comprises four 50mm (SLR equivalent) photos taken with a Sony A7RV (full frame) camera at 2.47pm on the 16th May 2024: the lower panorama shows the William Fraser at Point (a) near the centre of the photo, together with a freighter at anchor to the right



Single-frame 50mm (SLR equivalent) photo taken with a Sony A7RV (full frame) camera at 2.47pm on the 16th May 2024 - showing the William Fraser at Point (a) in the centre of the photo and a freighter at anchor to the right



Panorama Without the William Fraser (above) & With The William Fraser (below)

Each image comprises four 50mm (SLR equivalent) photos taken with a Sony A7RV (full frame) camera at 3.07pm on the 16th May 2024: the lower panorama shows the William Fraser at Point (a) near the centre of the photo, together with a freighter at anchor to the right



Single-frame 50mm (SLR equivalent) photo taken with a Sony A7RV (full frame) camera at 3.07pm on the 16th May 2024 - showing the William Fraser at Point (a) in the centre of the photo



Panorama Without the William Fraser (above) & With The William Fraser (below)

Each image comprises four 50mm (SLR equivalent) photos taken with a Sony A7RV (full frame) camera at 3.46pm on the 16th May 2024: the lower panorama shows the William Fraser at Point (b) in the centre-left of the image, with a freighter moving towards Whangarei Harbour further to the left



Single-frame 50mm (SLR equivalent) photo taken with a Sony A7RV (full frame) camera at 3.46pm on the 16th May 2024 - showing the William Fraser at Point (b) in the centre of the photo and a freighter moving towards Whangarei Harbour to the left



56



57

