

0 100 200 300 400 500 m



**LEGEND**

- EX contours (1.0 m)
- Proposed contours (1.0 m)
- Wetlands Retained
- 10m Wetlands buffer
- ▶ Treated clean water conveyance
- - - Indicative EX Watercourse
- - - Indicative EX Catchments flow path 2021 lidar
- Stockpile
- Silt fence
- Silt fence (super)
- Peat\_Drying\_Area
- Haul Road
- ◆ SRP
- DEB
- ▲ Level spreader
- ▶ Dirty\_Diversion
- ▶ Clean\_Diversion
- Erosion control treatment area (SRP or DEB)
- Stabilised entrance
- HILL STAGE

**Notes:**

1. Install perimeter controls and clean-water diversions before bulk earthworks begin.
2. Maintain all ESC measures throughout construction and repair after rainfall events as needed.
3. All works are to follow the Erosion and Sediment Control Guide for Land Disturbing Activities in the Wellington Region (2021).
4. Apply progressive stabilisation to exposed areas, including batters, as soon as practicable.
5. Controls are designed with reference to the GWRC ESC Guide (2021) and KCDC LDMR (2022); SRPs may also accommodate dewatering flows where practicable.

**Sediment Control Overview Plan**  
Phase 1

Waikanae North Developments Ltd

Waikanae North  
Peka Peka, Kapiti Coast

© Landlink Limited 2025



1 Ngaio Road, Waikanae 5036 + contactus@Landlink.nz

STAGE	PH1
	B
REVISION	C
REVISION DETAILS	Issued For Consent

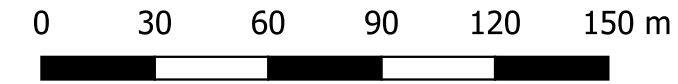
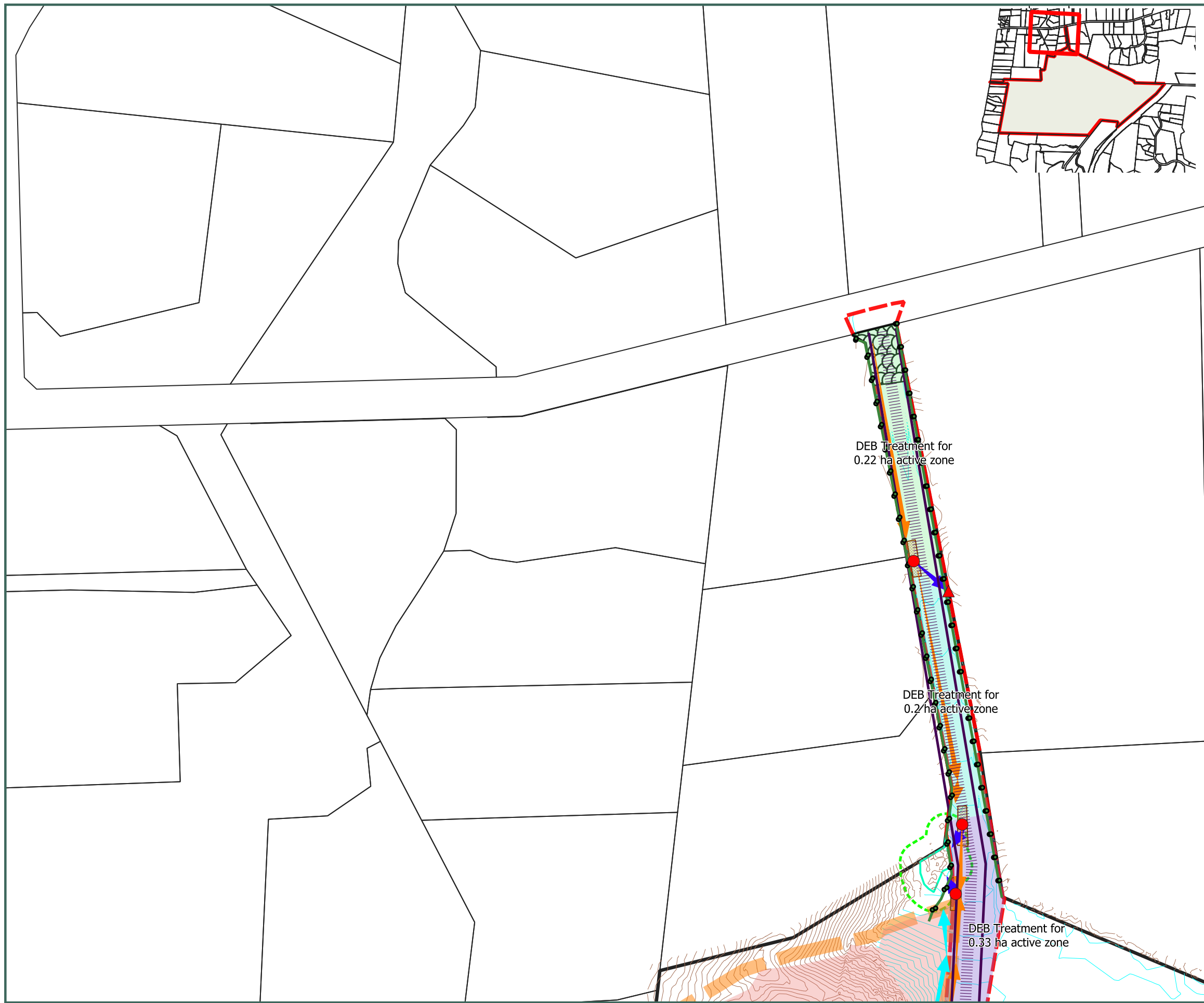
DESIGNED BY	JJH
DRAWN BY	JJH
APPROVED BY	PT

This drawing contains data from other sources and has been prepared for a specific site and event. Landlink Limited does not accept any liability for its accuracy, content or unauthorised use.

DATE 2026-03-13

SCALE Refer Scale Bar

**2911-PH1B-EC-220**



**LEGEND**

- EX contours (1.0 m)
- Proposed contours (1.0 m)
- - - Indicative EX Catchments flow path 2021 lidar
- - - EX Watercourse
- Wetlands Retained
- 10m Wetlands buffer
- Phase 1B works extent
- HILL STAGE
- Stockpile
- ▶ Treated clean water conveyance
- ▶ Clean\_Diversion
- ▶ Dirty\_Diversion
- Silt fence
- Silt fence (super)
- ▨ Peat\_Drying\_Area
- Haul Road
- ◆ SRP
- DEB
- ▲ Level spreader
- ▨ Erosion control treatment area (SRP or DEB)
- ▨ Stabilised entrance
- No Earthworks within 10m of Ngarara Stream

- Notes:
1. Install all ESC measures shown on this plan before Phase 1 earthworks commence.
  2. Maintain controls throughout construction and reinstate after rainfall events as needed.
  3. All works are to follow the Erosion and Sediment Control Guide for Land Disturbing Activities in the Wellington Region (2021) and the certified ESCP.
  4. No in-channel construction works are proposed within the Ngarara Stream corridor during Phase 1; any future in-channel works would be subject to separate staging and approvals.
  5. The hill area may be accessed and worked in Phase 1, provided ESC measures for that stage are installed and operating.

**Sediment Control Plan – Phase 1B**  
Sheet 1 of 17

Waikanae North Developments Ltd

Waikanae North  
Peka Peka, Kapiti Coast

© Landlink Limited 2025



1 Ngaio Road, Waikanae 5036 + contactus@Landlink.nz

STAGE	PH1
	B
REVISION	C
REVISION DETAILS	Issued For Consent

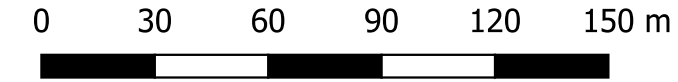
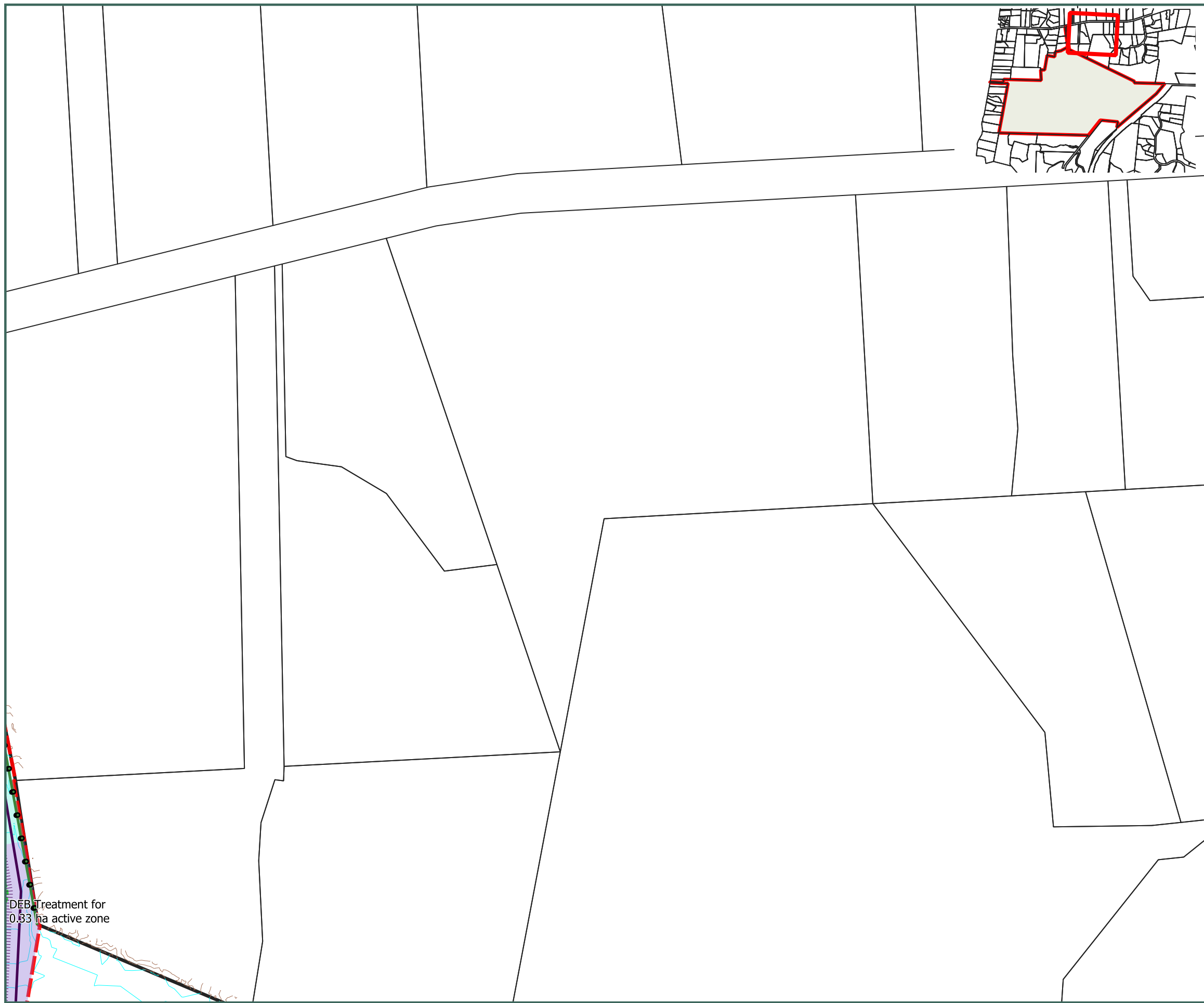
DESIGNED BY	JJH
DRAWN BY	JJH
APPROVED BY	PT

This drawing contains data from other sources and has been prepared for a specific site and event. Landlink Limited does not accept any liability for its accuracy, content or unauthorised use.

DATE 2026-03-13

SCALE Refer Scale Bar

2911-PH1B-EC-221



**LEGEND**

- EX contours (1.0 m)
- Proposed contours (1.0 m)
- - - Indicative EX Catchments flow path 2021 lidar
- EX Watercourse
- Wetlands Retained
- 10m Wetlands buffer
- Phase 1B works extent
- HILL STAGE
- Stockpile
- ▶ Treated clean water conveyance
- ▶ Clean\_Diversion
- ▶ Dirty\_Diversion
- Silt fence
- Silt fence (super)
- / / Peat\_Drying\_Area
- Haul Road
- ◆ SRP
- DEB
- ▲ Level spreader
- Erosion control treatment area (SRP or DEB)
- Stabilised entrance
- No Earthworks within 10m of Ngarara Stream

**Notes:**

1. Install all ESC measures shown on this plan before Phase 1 earthworks commence.
2. Maintain controls throughout construction and reinstate after rainfall events as needed.
3. All works are to follow the Erosion and Sediment Control Guide for Land Disturbing Activities in the Wellington Region (2021) and the certified ESCP.
4. No in-channel construction works are proposed within the Ngarara Stream corridor during Phase 1; any future in-channel works would be subject to separate staging and approvals.
5. The hill area may be accessed and worked in Phase 1, provided ESC measures for that stage are installed and operating.

DEB Treatment for 0.33 ha active zone

**Sediment Control Plan – Phase 1B**  
Sheet 2 of 17

Waikanae North Developments Ltd

Waikanae North  
Peka Peka, Kapiti Coast

© Landlink Limited 2025



1 Ngaio Road, Waikanae 5036 + contactus@Landlink.nz

STAGE	PH1
	B
REVISION	C
REVISION DETAILS	Issued For Consent

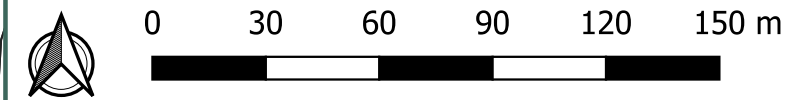
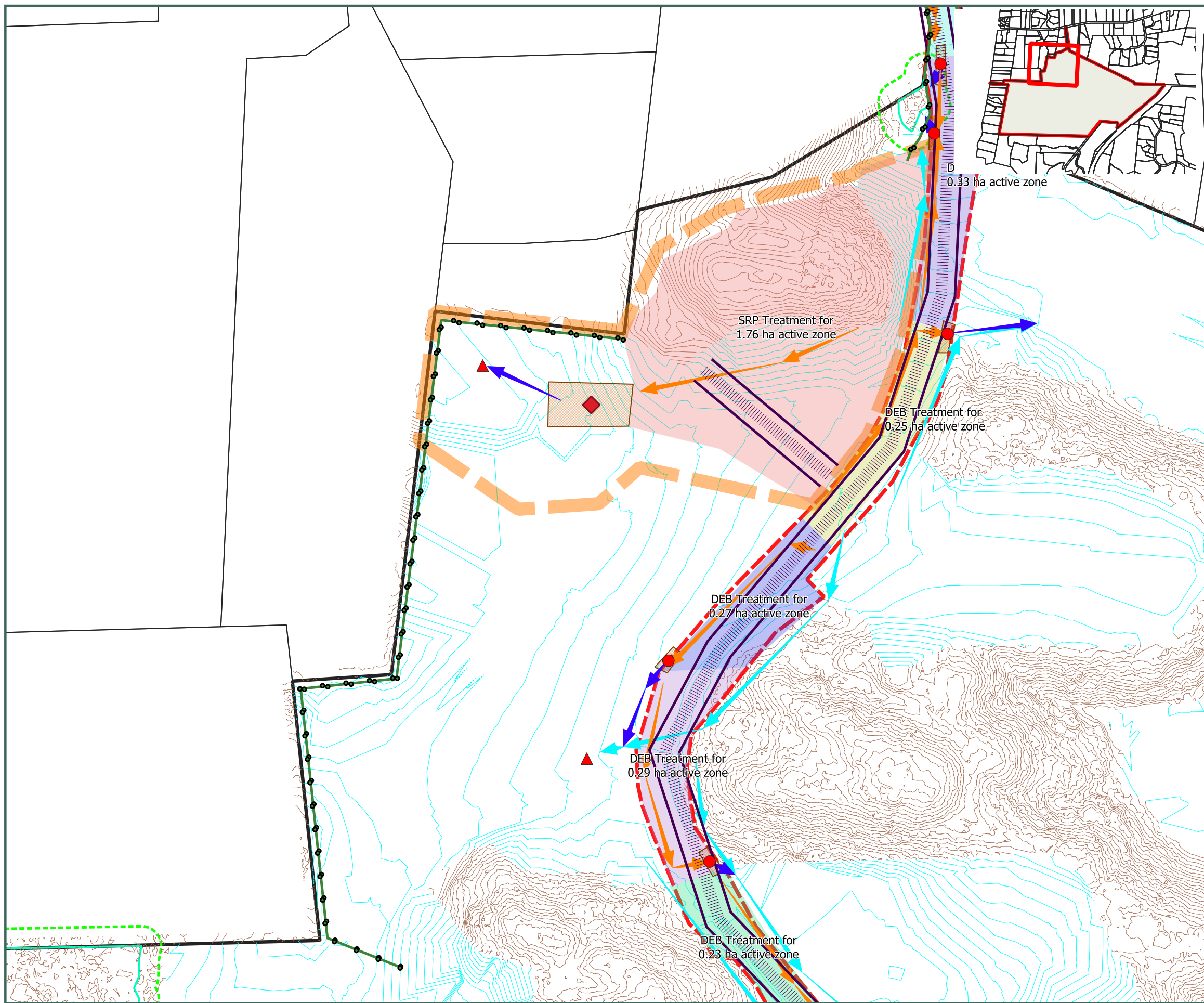
DESIGNED BY	JJH
DRAWN BY	JJH
APPROVED BY	PT

This drawing contains data from other sources and has been prepared for a specific site and event. Landlink Limited does not accept any liability for its accuracy, content or unauthorised use.

DATE 2026-03-13

SCALE Refer Scale Bar

2911-PH1B-EC-222



- LEGEND**
- EX contours (1.0 m)
  - Proposed contours (1.0 m)
  - - - Indicative EX Catchments flow path 2021 lidar
  - - - EX Watercourse
  - Wetlands Retained
  - 10m Wetlands buffer
  - Phase 1B works extent
  - HILL STAGE
  - Stockpile
  - ▶ Treated clean water conveyance
  - ▶ Clean\_Diversion
  - ▶ Dirty\_Diversion
  - Silt fence
  - Silt fence (super)
  - ▨ Peat\_Drying\_Area
  - Haul Road
  - ◆ SRP
  - DEB
  - ▲ Level spreader
  - ▨ Erosion control treatment area (SRP or DEB)
  - ▨ Stabilised entrance
  - No Earthworks within 10m of Ngarara Stream

- Notes:**
1. Install all ESC measures shown on this plan before Phase 1 earthworks commence.
  2. Maintain controls throughout construction and reinstate after rainfall events as needed.
  3. All works are to follow the Erosion and Sediment Control Guide for Land Disturbing Activities in the Wellington Region (2021) and the certified ESCP.
  4. No in-channel construction works are proposed within the Ngarara Stream corridor during Phase 1; any future in-channel works would be subject to separate staging and approvals.
  5. The hill area may be accessed and worked in Phase 1, provided ESC measures for that stage are installed and operating.

**Sediment Control Plan – Phase 1B**  
Sheet 3 of 17

Waikanae North Developments Ltd

Waikanae North  
Peka Peka, Kapiti Coast

© Landlink Limited 2025



1 Ngaio Road, Waikanae 5036 + contactus@Landlink.nz

STAGE	PH1
	B
REVISION	C
REVISION DETAILS	Issued For Consent

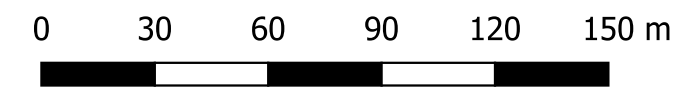
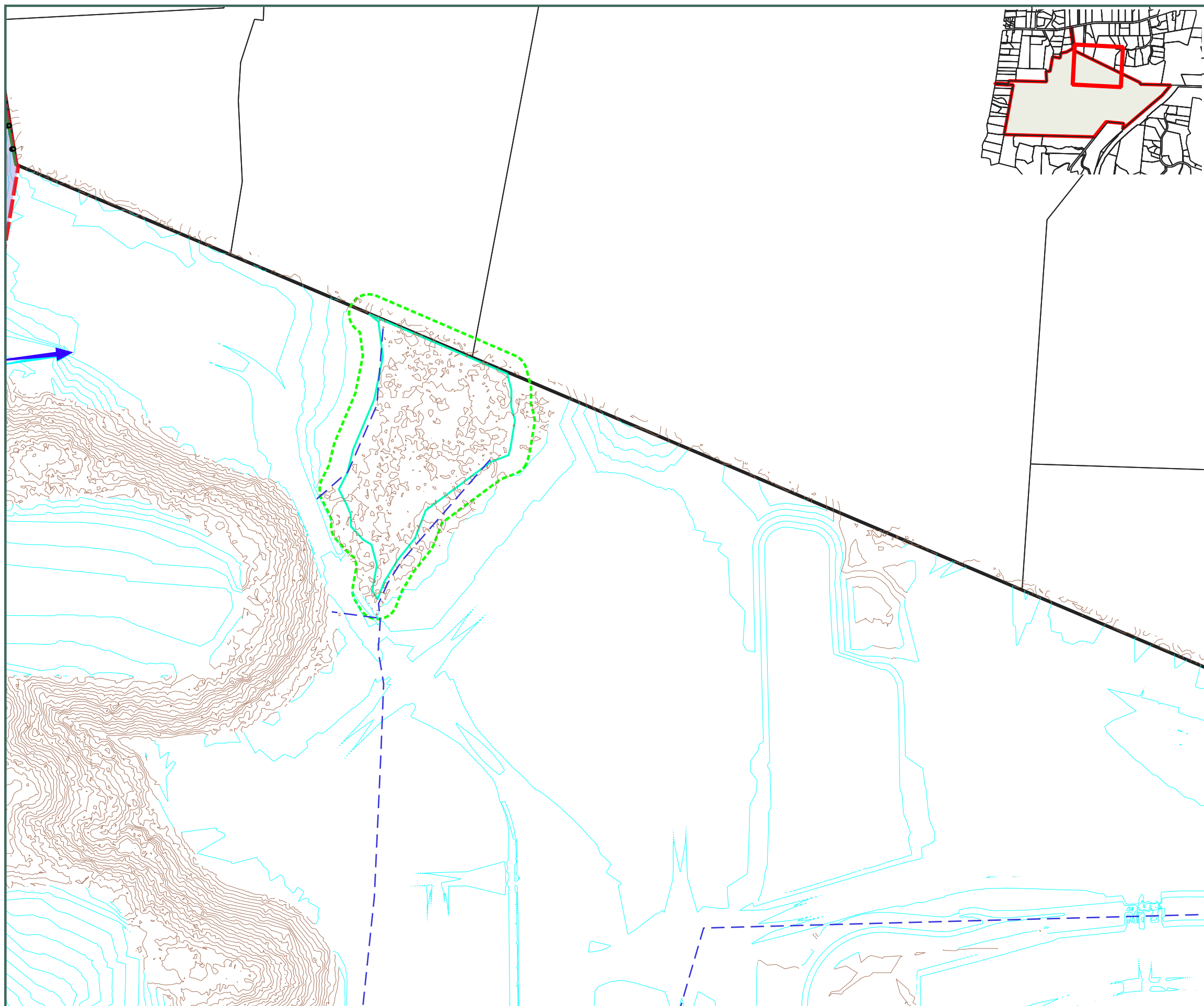
DESIGNED BY	JJH
DRAWN BY	JJH
APPROVED BY	PT

This drawing contains data from other sources and has been prepared for a specific site and event. Landlink Limited does not accept any liability for its accuracy, content or unauthorised use.

DATE 2026-03-13

SCALE Refer Scale Bar

**2911-PH1B-EC-223**



- LEGEND**
- EX contours (1.0 m)
  - Proposed contours (1.0 m)
  - - - Indicative EX Catchments flow path 2021 lidar
  - - - EX Watercourse
  - Wetlands Retained
  - 10m Wetlands buffer
  - Phase 1B works extent
  - HILL STAGE
  - Stockpile
  - ▶ Treated clean water conveyance
  - ▶ Clean\_Diversion
  - ▶ Dirty\_Diversion
  - Silt fence
  - Silt fence (super)
  - ▨ Peat\_Drying\_Area
  - Haul Road
  - ◆ SRP
  - DEB
  - ▲ Level spreader
  - ▨ Erosion control treatment area (SRP or DEB)
  - ▨ Stabilised entrance
  - No Earthworks within 10m of Ngarara Stream

- Notes:**
1. Install all ESC measures shown on this plan before Phase 1 earthworks commence.
  2. Maintain controls throughout construction and reinstate after rainfall events as needed.
  3. All works are to follow the Erosion and Sediment Control Guide for Land Disturbing Activities in the Wellington Region (2021) and the certified ESCP.
  4. No in-channel construction works are proposed within the Ngarara Stream corridor during Phase 1; any future in-channel works would be subject to separate staging and approvals.
  5. The hill area may be accessed and worked in Phase 1, provided ESC measures for that stage are installed and operating.

**Sediment Control Plan – Phase 1B**  
Sheet 4 of 17

Waikanae North Developments Ltd

Waikanae North  
Peka Peka, Kapiti Coast

© Landlink Limited 2025



1 Ngaio Road, Waikanae 5036 + contactus@Landlink.nz

STAGE	PH1
	B
REVISION	C
REVISION DETAILS	Issued For Consent

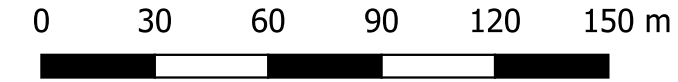
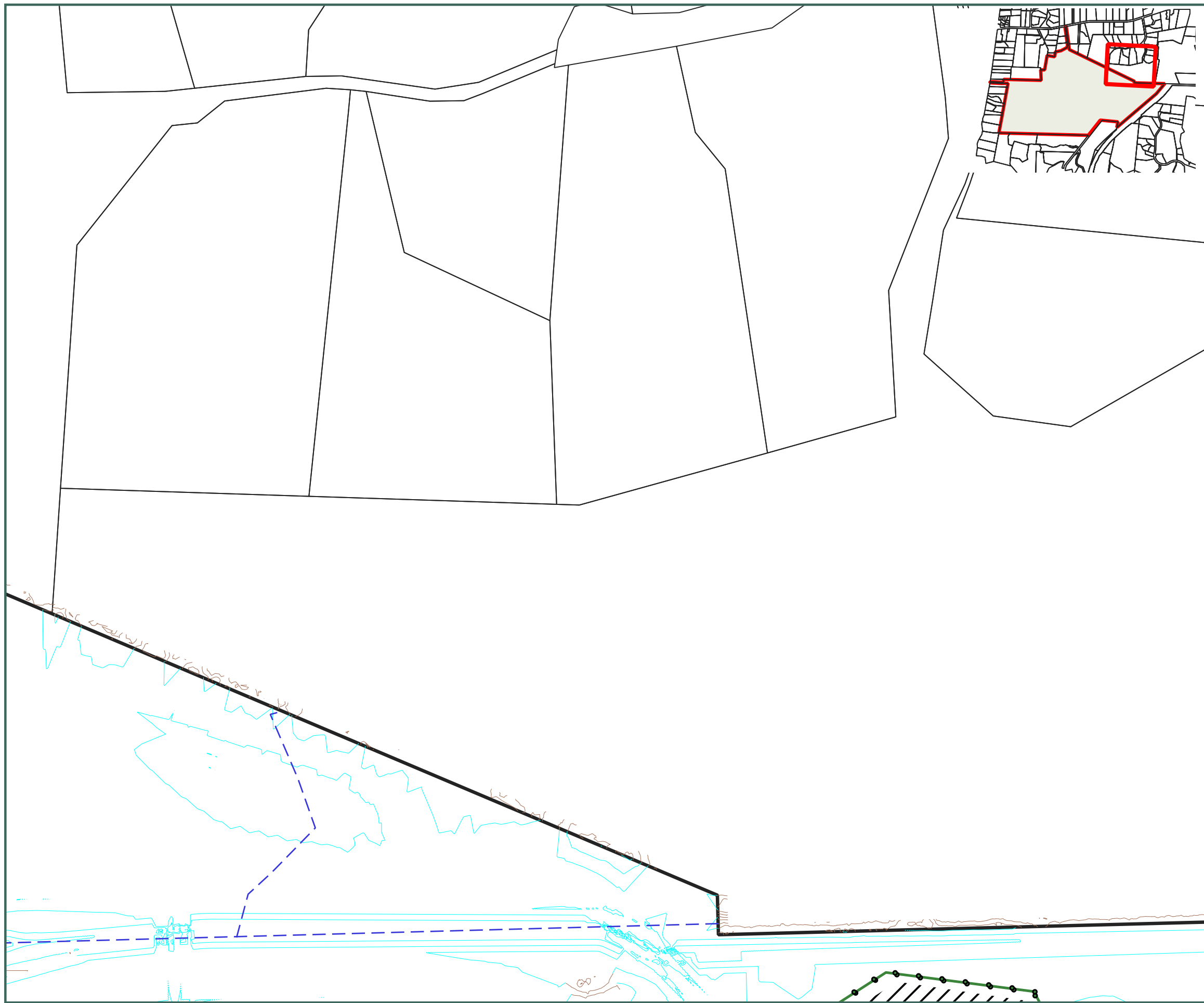
DESIGNED BY	JJH
DRAWN BY	JJH
APPROVED BY	PT

This drawing contains data from other sources and has been prepared for a specific site and event. Landlink Limited does not accept any liability for its accuracy, content or unauthorised use.

DATE 2026-03-13

SCALE Refer Scale Bar

2911-PH1B-EC-224



**LEGEND**

- EX contours (1.0 m)
- Proposed contours (1.0 m)
- - - Indicative EX Catchments flow path 2021 lidar
- EX Watercourse
- Wetlands Retained
- 10m Wetlands buffer
- Phase 1B works extent
- HILL STAGE
- Stockpile
- ▶ Treated clean water conveyance
- ▶ Clean\_Diversion
- ▶ Dirty\_Diversion
- Silt fence
- Silt fence (super)
- / / Peat\_Drying\_Area
- Haul Road
- ◆ SRP
- DEB
- ▲ Level spreader
- Erosion control treatment area (SRP or DEB)
- Stabilised entrance
- No Earthworks within 10m of Ngarara Stream

**Notes:**

1. Install all ESC measures shown on this plan before Phase 1 earthworks commence.
2. Maintain controls throughout construction and reinstate after rainfall events as needed.
3. All works are to follow the Erosion and Sediment Control Guide for Land Disturbing Activities in the Wellington Region (2021) and the certified ESCP.
4. No in-channel construction works are proposed within the Ngarara Stream corridor during Phase 1; any future in-channel works would be subject to separate staging and approvals.
5. The hill area may be accessed and worked in Phase 1, provided ESC measures for that stage are installed and operating.

**Sediment Control Plan – Phase 1B**

Sheet 5 of 17

Waikanae North Developments Ltd

Waikanae North

Peka Peka, Kapiti Coast

© Landlink Limited 2025



1 Ngaio Road, Waikanae 5036 + contactus@Landlink.nz

STAGE	PH1 B
REVISION	C
REVISION DETAILS	Issued For Consent

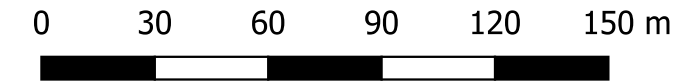
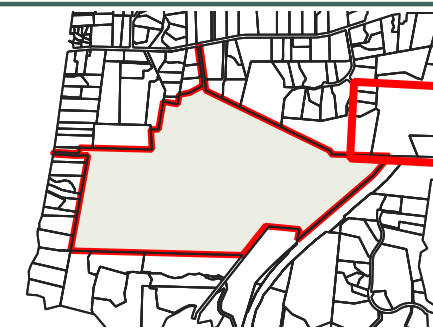
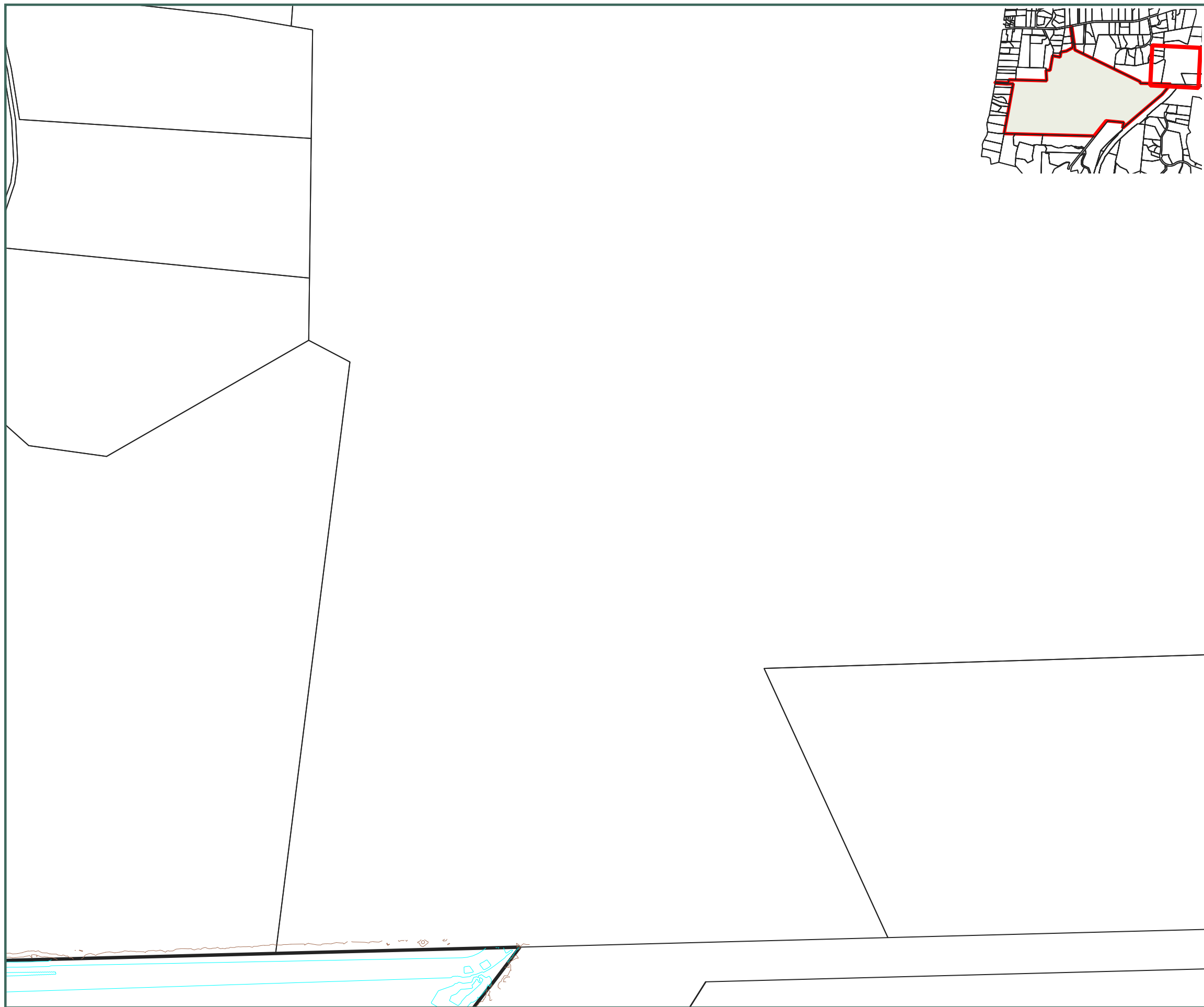
DESIGNED BY	JJH
DRAWN BY	JJH
APPROVED BY	PT

This drawing contains data from other sources and has been prepared for a specific site and event. Landlink Limited does not accept any liability for its accuracy, content or unauthorised use.

DATE 2026-03-13

SCALE Refer Scale Bar

**2911-PH1B-EC-225**



**LEGEND**

- EX contours (1.0 m)
- Proposed contours (1.0 m)
- - - Indicative EX Catchments flow path 2021 lidar
- EX Watercourse
- Wetlands Retained
- 10m Wetlands buffer
- Phase 1B works extent
- HILL STAGE
- Stockpile
- ▶ Treated clean water conveyance
- ▶ Clean\_Diversion
- ▶ Dirty\_Diversion
- Silt fence
- Silt fence (super)
- / / Peat\_Drying\_Area
- Haul Road
- ◆ SRP
- DEB
- ▲ Level spreader
- Erosion control treatment area (SRP or DEB)
- Stabilised entrance
- No Earthworks within 10m of Ngarara Stream

**Notes:**

1. Install all ESC measures shown on this plan before Phase 1 earthworks commence.
2. Maintain controls throughout construction and reinstate after rainfall events as needed.
3. All works are to follow the Erosion and Sediment Control Guide for Land Disturbing Activities in the Wellington Region (2021) and the certified ESCP.
4. No in-channel construction works are proposed within the Ngarara Stream corridor during Phase 1; any future in-channel works would be subject to separate staging and approvals.
5. The hill area may be accessed and worked in Phase 1, provided ESC measures for that stage are installed and operating.

**Sediment Control Plan – Phase 1B**

Sheet 6 of 17

Waikanae North Developments Ltd

Waikanae North

Peka Peka, Kapiti Coast

© Landlink Limited 2025



1 Ngaio Road, Waikanae 5036 + contactus@Landlink.nz

STAGE	PH1 B
REVISION	C
REVISION DETAILS	Issued For Consent

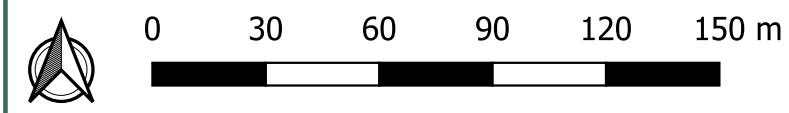
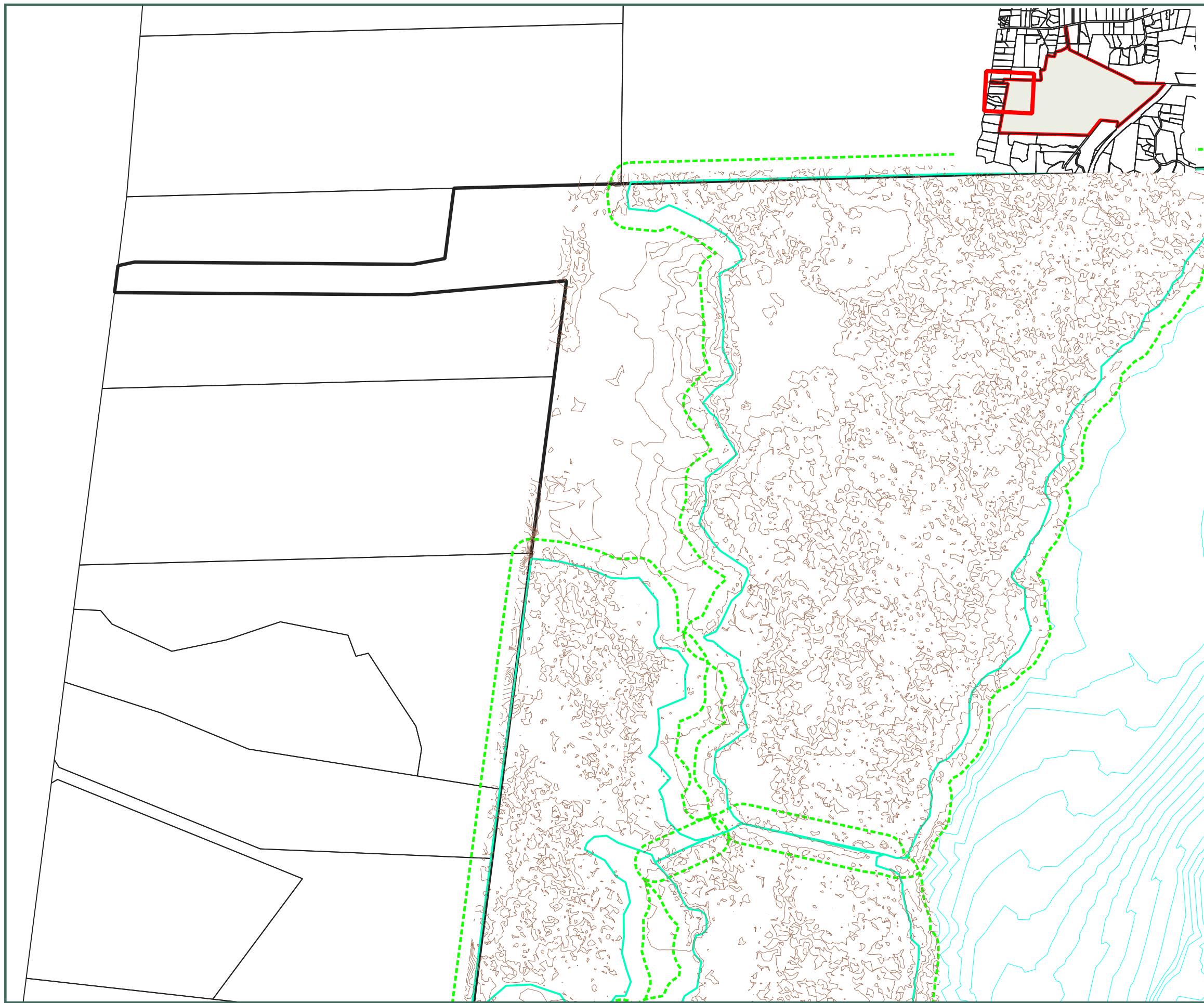
DESIGNED BY	JJH
DRAWN BY	JJH
APPROVED BY	PT

This drawing contains data from other sources and has been prepared for a specific site and event. Landlink Limited does not accept any liability for its accuracy, content or unauthorised use.

DATE 2026-03-13

SCALE Refer Scale Bar

**2911-PH1B-EC-226**



- LEGEND**
- EX contours (1.0 m)
  - Proposed contours (1.0 m)
  - - - Indicative EX Catchments flow path 2021 lidar
  - - - EX Watercourse
  - Wetlands Retained
  - 10m Wetlands buffer
  - Phase 1B works extent
  - HILL STAGE
  - Stockpile
  - ▶ Treated clean water conveyance
  - ▶ Clean\_Diversion
  - ▶ Dirty\_Diversion
  - Silt fence
  - Silt fence (super)
  - ▨ Peat\_Drying\_Area
  - Haul Road
  - ◆ SRP
  - DEB
  - ▲ Level spreader
  - ▨ Erosion control treatment area (SRP or DEB)
  - ▨ Stabilised entrance
  - No Earthworks within 10m of Ngarara Stream

- Notes:**
1. Install all ESC measures shown on this plan before Phase 1 earthworks commence.
  2. Maintain controls throughout construction and reinstate after rainfall events as needed.
  3. All works are to follow the Erosion and Sediment Control Guide for Land Disturbing Activities in the Wellington Region (2021) and the certified ESCP.
  4. No in-channel construction works are proposed within the Ngarara Stream corridor during Phase 1; any future in-channel works would be subject to separate staging and approvals.
  5. The hill area may be accessed and worked in Phase 1, provided ESC measures for that stage are installed and operating.

**Sediment Control Plan – Phase 1B**  
Sheet 7 of 17

Waikanae North Developments Ltd

Waikanae North  
Peka Peka, Kapiti Coast

© Landlink Limited 2025



1 Ngaio Road, Waikanae 5036 + contactus@Landlink.nz

STAGE	PH1 B
REVISION	C
REVISION DETAILS	Issued For Consent

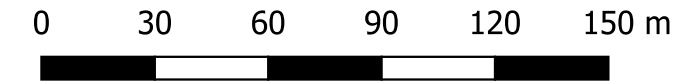
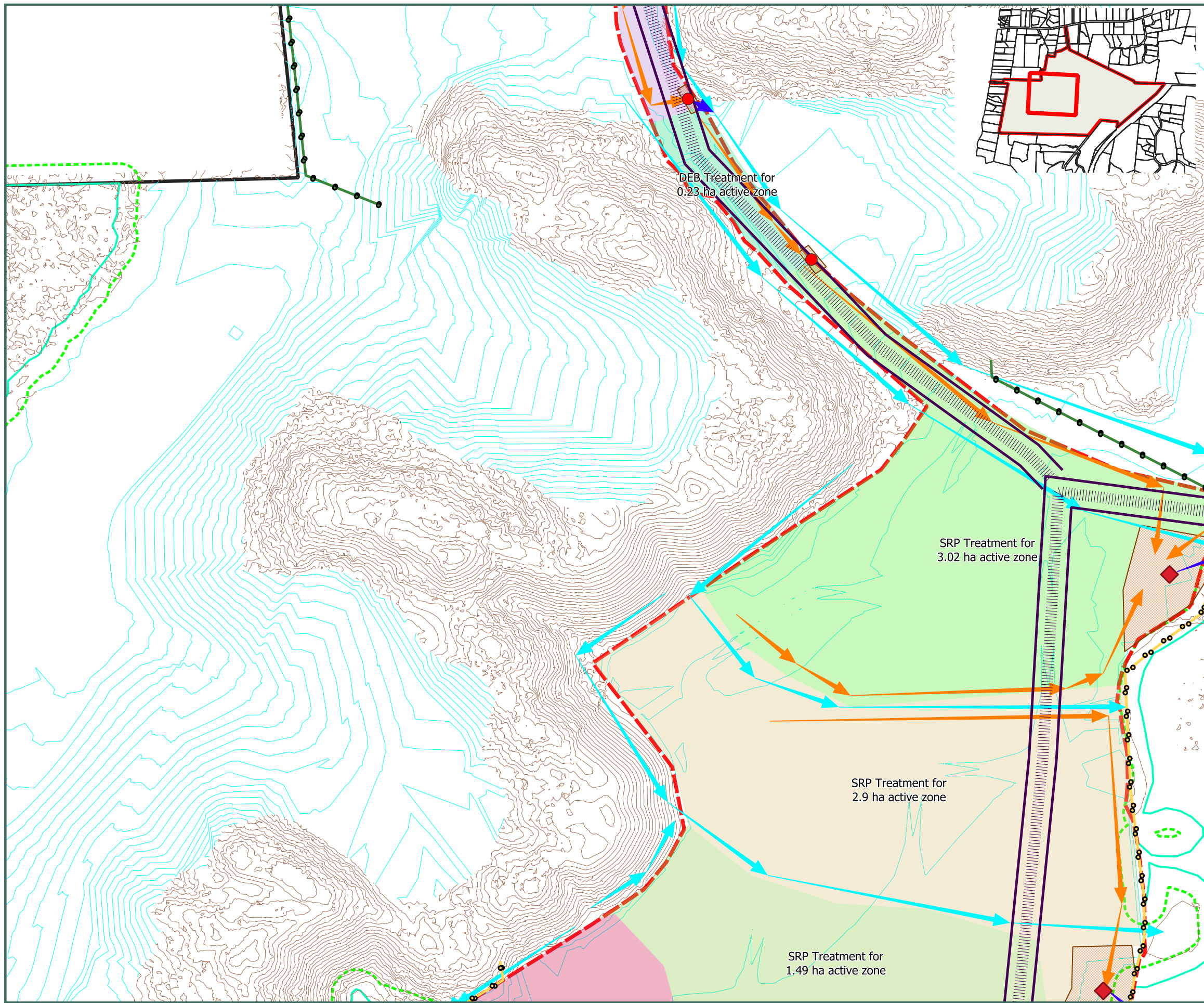
DESIGNED BY	JJH
DRAWN BY	JJH
APPROVED BY	PT

DATE 2026-03-13

SCALE Refer Scale Bar

2911-PH1B-EC-227

This drawing contains data from other sources and has been prepared for a specific site and event. Landlink Limited does not accept any liability for its accuracy, content or unauthorised use.



**LEGEND**

- EX contours (1.0 m)
- Proposed contours (1.0 m)
- - - Indicative EX Catchments flow path 2021 lidar
- - - EX Watercourse
- ▭ Wetlands Retained
- - - 10m Wetlands buffer
- - - Phase 1B works extent
- HILL STAGE
- ▭ Stockpile
- ➡ Treated clean water conveyance
- ➡ Clean\_Diversion
- ➡ Dirty\_Diversion
- Silt fence
- Silt fence (super)
- ▨ Peat\_Drying\_Area
- Haul Road
- ◆ SRP
- DEB
- ▲ Level spreader
- ▨ Erosion control treatment area (SRP or DEB)
- ▨ Stabilised entrance
- No Earthworks within 10m of Ngarara Stream

- Notes:
1. Install all ESC measures shown on this plan before Phase 1 earthworks commence.
  2. Maintain controls throughout construction and reinstate after rainfall events as needed.
  3. All works are to follow the Erosion and Sediment Control Guide for Land Disturbing Activities in the Wellington Region (2021) and the certified ESCP.
  4. No in-channel construction works are proposed within the Ngarara Stream corridor during Phase 1; any future in-channel works would be subject to separate staging and approvals.
  5. The hill area may be accessed and worked in Phase 1, provided ESC measures for that stage are installed and operating.

**Sediment Control Plan – Phase 1B**  
Sheet 8 of 17

Waikanae North Developments Ltd

Waikanae North  
Peka Peka, Kapiti Coast

© Landlink Limited 2025



1 Ngaio Road, Waikanae 5036 + contactus@Landlink.nz

STAGE	PH1
	B
REVISION	C
REVISION DETAILS	Issued For Consent

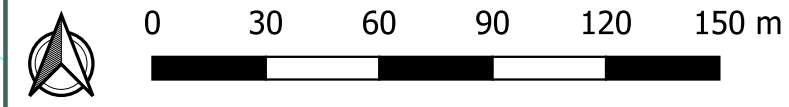
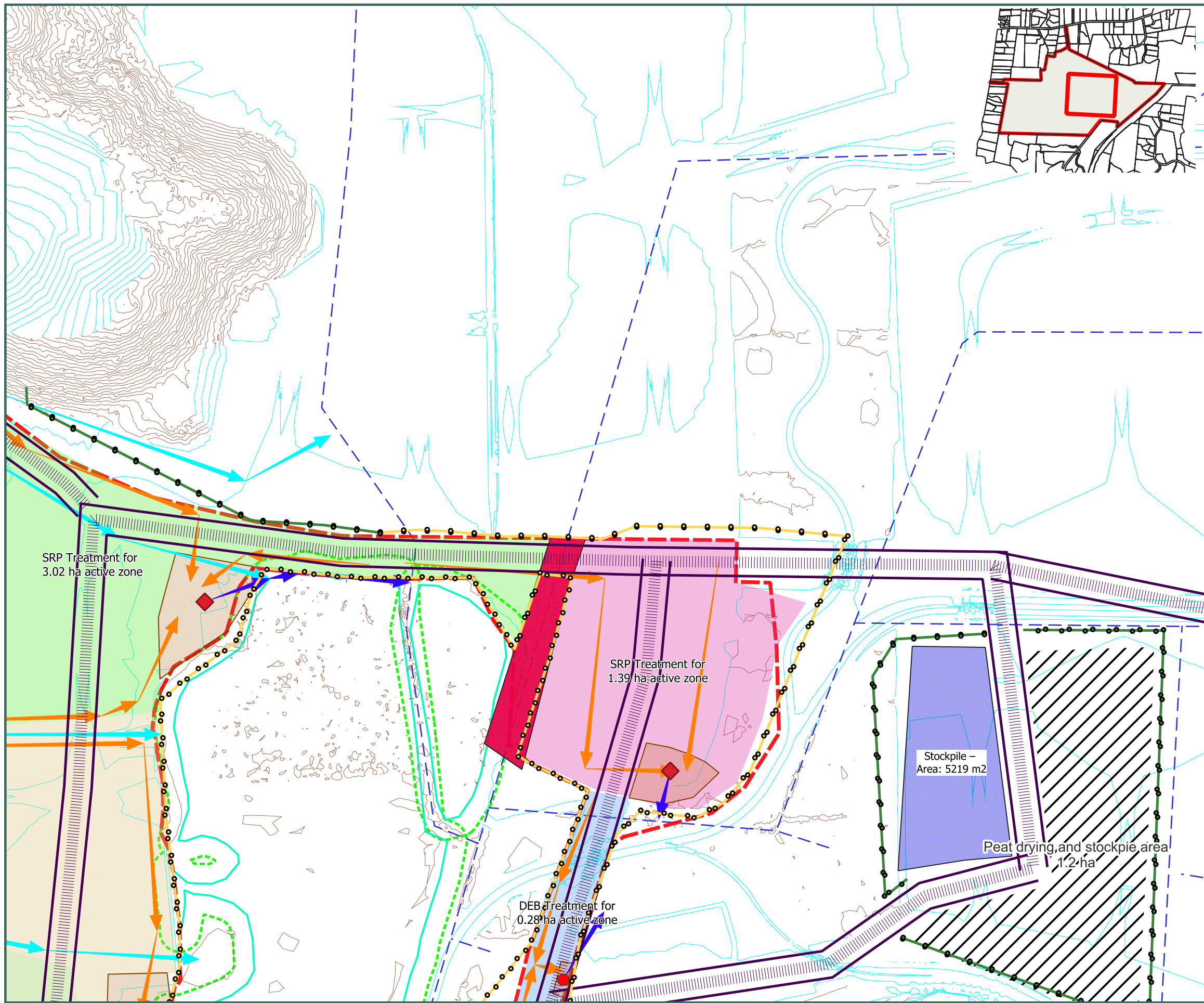
DESIGNED BY	JJH
DRAWN BY	JJH
APPROVED BY	PT

This drawing contains data from other sources and has been prepared for a specific site and event. Landlink Limited does not accept any liability for its accuracy, content or unauthorised use.

DATE 2026-03-13

SCALE Refer Scale Bar

2911-PH1B-EC-228



- LEGEND**
- EX contours (1.0 m)
  - Proposed contours (1.0 m)
  - - - Indicative EX Catchments flow path 2021 lidar
  - - - EX Watercourse
  - Wetlands Retained
  - 10m Wetlands buffer
  - Phase 1B works extent
  - HILL STAGE
  - Stockpile
  - ▶ Treated clean water conveyance
  - ▶ Clean\_Diversion
  - ▶ Dirty\_Diversion
  - Silt fence
  - Silt fence (super)
  - ▨ Peat\_Drying\_Area
  - Haul Road
  - ◆ SRP
  - DEB
  - ▲ Level spreader
  - ▨ Erosion control treatment area (SRP or DEB)
  - ▨ Stabilised entrance
  - No Earthworks within 10m of Ngarara Stream

- Notes:**
1. Install all ESC measures shown on this plan before Phase 1 earthworks commence.
  2. Maintain controls throughout construction and reinstate after rainfall events as needed.
  3. All works are to follow the Erosion and Sediment Control Guide for Land Disturbing Activities in the Wellington Region (2021) and the certified ESCP.
  4. No in-channel construction works are proposed within the Ngarara Stream corridor during Phase 1; any future in-channel works would be subject to separate staging and approvals.
  5. The hill area may be accessed and worked in Phase 1, provided ESC measures for that stage are installed and operating.

**Sediment Control Plan – Phase 1B**  
Sheet 9 of 17

Waikanae North Developments Ltd

Waikanae North  
Peka Peka, Kapiti Coast

© Landlink Limited 2025



1 Ngaio Road, Waikanae 5036 + contactus@Landlink.nz

STAGE	PH1 B
REVISION	C
REVISION DETAILS	Issued For Consent

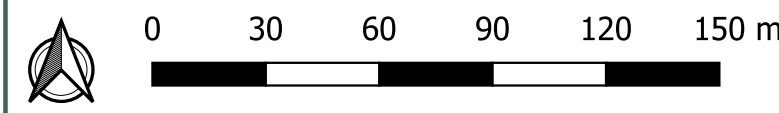
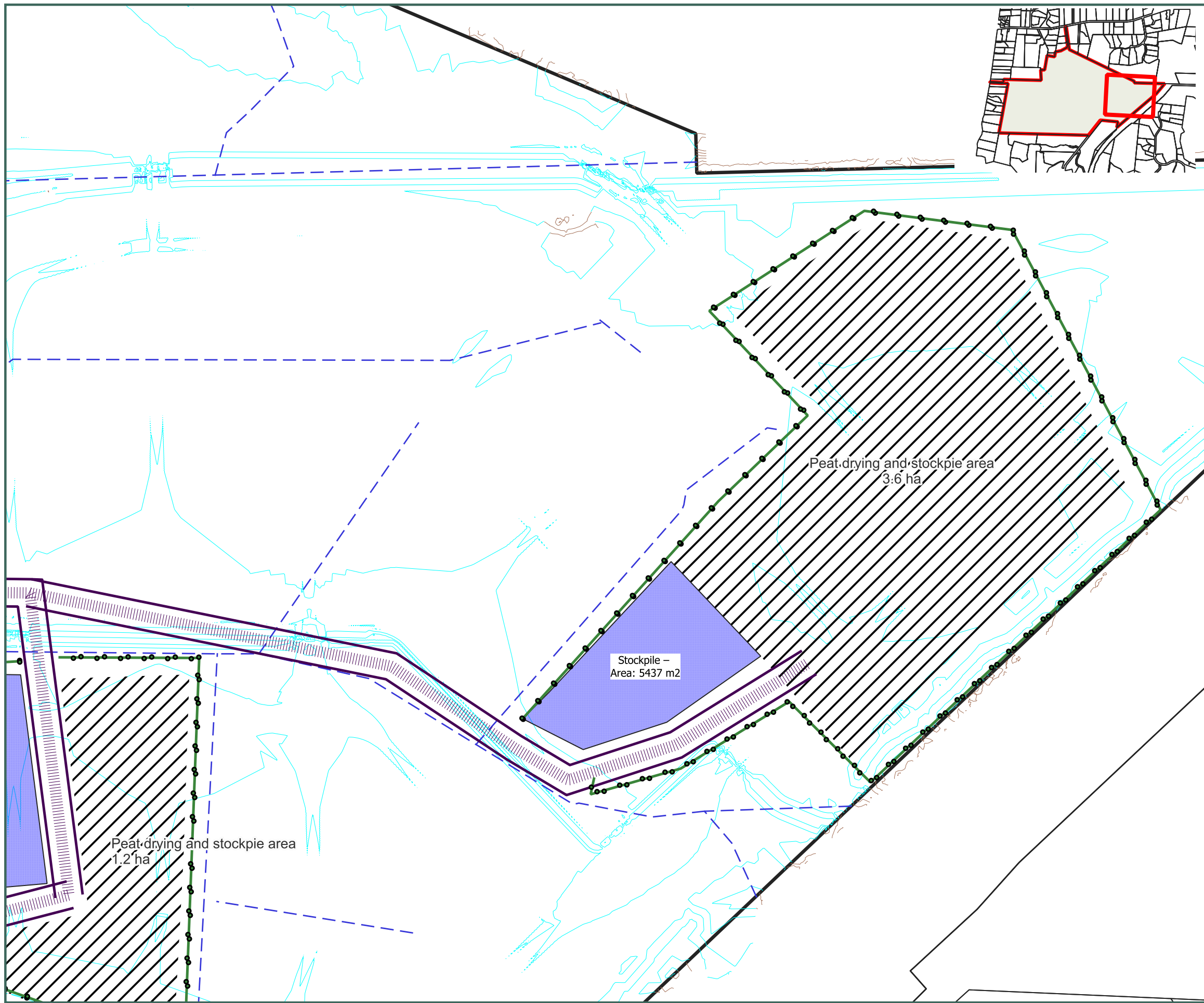
DESIGNED BY	JJH
DRAWN BY	JJH
APPROVED BY	PT

DATE 2026-03-13

SCALE Refer Scale Bar

2911-PH1B-EC-229

This drawing contains data from other sources and has been prepared for a specific site and event. Landlink Limited does not accept any liability for its accuracy, content or unauthorised use.



- LEGEND**
- EX contours (1.0 m)
  - Proposed contours (1.0 m)
  - - - Indicative EX Catchments flow path 2021 lidar
  - - - EX Watercourse
  - Wetlands Retained
  - - - 10m Wetlands buffer
  - Phase 1B works extent
  - HILL STAGE
  - Stockpile
  - ▶ Treated clean water conveyance
  - ▶ Clean\_Diversion
  - ▶ Dirty\_Diversion
  - Silt fence
  - Silt fence (super)
  - ▨ Peat\_Drying\_Area
  - Haul Road
  - ◆ SRP
  - DEB
  - ▲ Level spreader
  - ▨ Erosion control treatment area (SRP or DEB)
  - ▨ Stabilised entrance
  - No Earthworks within 10m of Ngarara Stream

- Notes:**
1. Install all ESC measures shown on this plan before Phase 1 earthworks commence.
  2. Maintain controls throughout construction and reinstate after rainfall events as needed.
  3. All works are to follow the Erosion and Sediment Control Guide for Land Disturbing Activities in the Wellington Region (2021) and the certified ESCP.
  4. No in-channel construction works are proposed within the Ngarara Stream corridor during Phase 1; any future in-channel works would be subject to separate staging and approvals.
  5. The hill area may be accessed and worked in Phase 1, provided ESC measures for that stage are installed and operating.

**Sediment Control Plan – Phase 1B**  
Sheet 10 of 17

Waikanae North Developments Ltd

Waikanae North  
Peka Peka, Kapiti Coast

© Landlink Limited 2025



1 Ngaio Road, Waikanae 5036 + contactus@Landlink.nz

STAGE	PH1
	B
REVISION	C
REVISION DETAILS	Issued For Consent

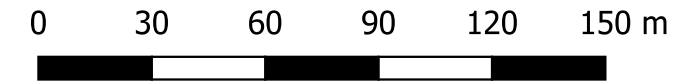
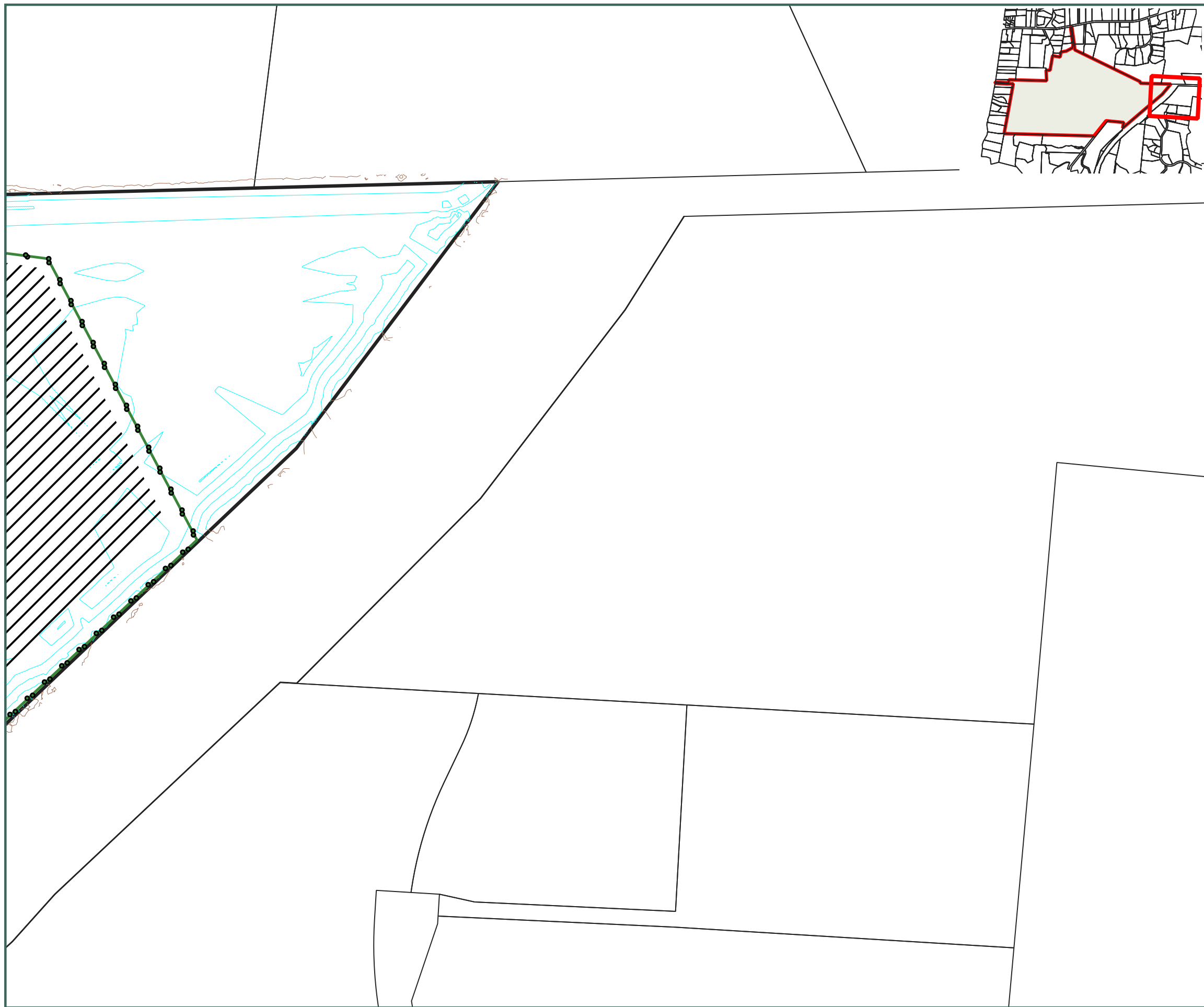
DESIGNED BY	JJH
DRAWN BY	JJH
APPROVED BY	PT

This drawing contains data from other sources and has been prepared for a specific site and event. Landlink Limited does not accept any liability for its accuracy, content or unauthorised use.

DATE 2026-03-13

SCALE Refer Scale Bar

**2911-PH1B-EC-230**



**LEGEND**

- EX contours (1.0 m)
- Proposed contours (1.0 m)
- - - Indicative EX Catchments flow path 2021 lidar
- EX Watercourse
- Wetlands Retained
- 10m Wetlands buffer
- Phase 1B works extent
- HILL STAGE
- Stockpile
- ▶ Treated clean water conveyance
- ▶ Clean\_Diversion
- ▶ Dirty\_Diversion
- Silt fence
- Silt fence (super)
- / / Peat\_Drying\_Area
- Haul Road
- ◆ SRP
- DEB
- ▲ Level spreader
- Erosion control treatment area (SRP or DEB)
- Stabilised entrance
- No Earthworks within 10m of Ngarara Stream

**Notes:**

1. Install all ESC measures shown on this plan before Phase 1 earthworks commence.
2. Maintain controls throughout construction and reinstate after rainfall events as needed.
3. All works are to follow the Erosion and Sediment Control Guide for Land Disturbing Activities in the Wellington Region (2021) and the certified ESCP.
4. No in-channel construction works are proposed within the Ngarara Stream corridor during Phase 1; any future in-channel works would be subject to separate staging and approvals.
5. The hill area may be accessed and worked in Phase 1, provided ESC measures for that stage are installed and operating.

**Sediment Control Plan – Phase 1B**

Sheet 11 of 17

Waikanae North Developments Ltd

Waikanae North

Peka Peka, Kapiti Coast

© Landlink Limited 2025



1 Ngaio Road, Waikanae 5036 + contactus@Landlink.nz

STAGE	PH1 B
REVISION	C
REVISION DETAILS	Issued For Consent

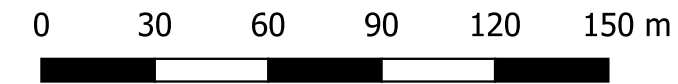
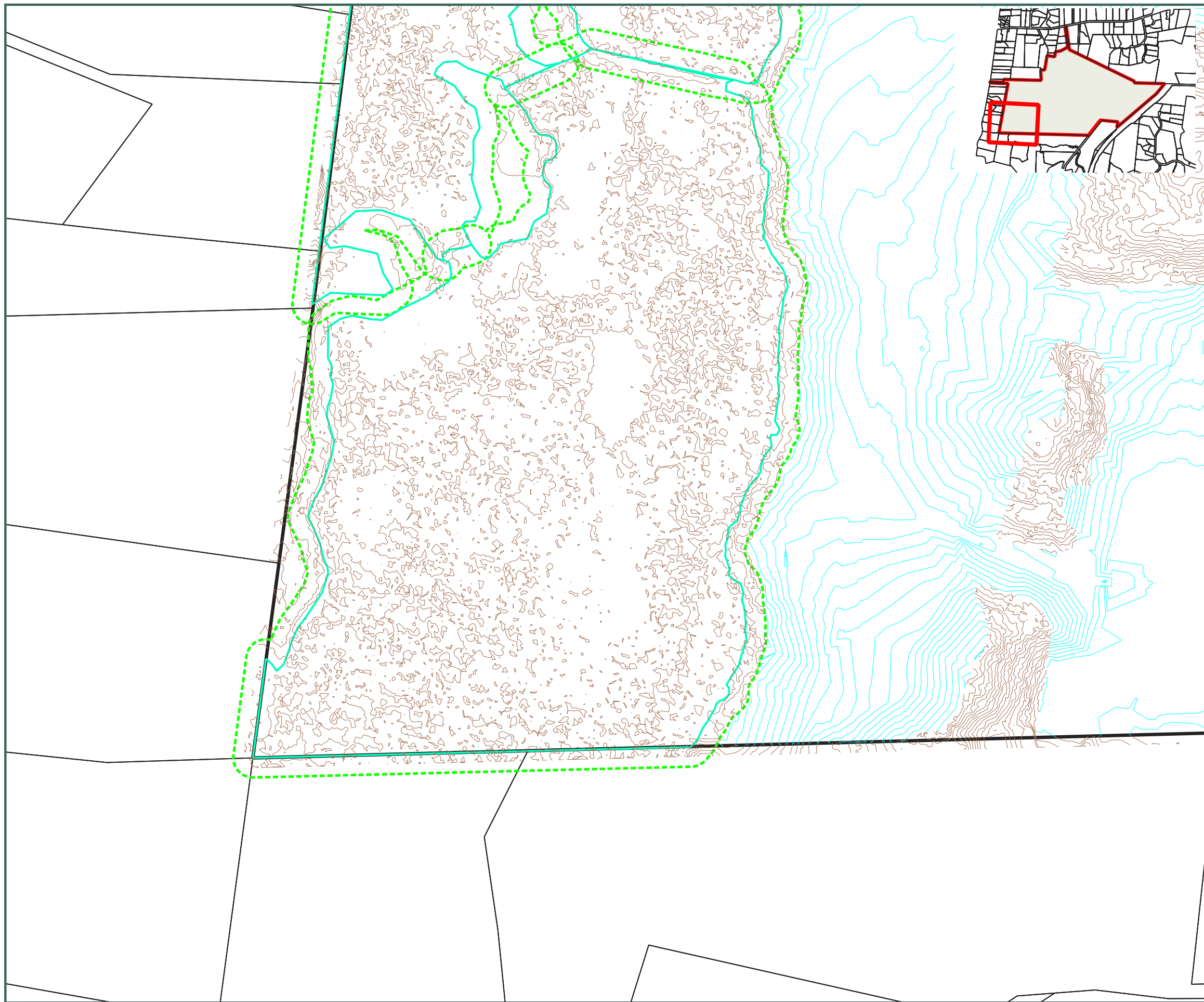
DESIGNED BY	JJH
DRAWN BY	JJH
APPROVED BY	PT

This drawing contains data from other sources and has been prepared for a specific site and event.  
Landlink Limited does not accept any liability for its accuracy, content or unauthorised use.

DATE 2026-03-13

SCALE Refer Scale Bar

**2911-PH1B-EC-231**



**LEGEND**

- EX contours (1.0 m)
- Proposed contours (1.0 m)
- - - Indicative EX Catchments flow path 2021 lidar
- EX Watercourse
- Wetlands Retained
- 10m Wetlands buffer
- Phase 1B works extent
- HILL STAGE
- Stockpile
- ▶ Treated clean water conveyance
- ▶ Clean\_Diversion
- ▶ Dirty\_Diversion
- Silt fence
- Silt fence (super)
- / / Peat\_Drying\_Area
- Haul Road
- ◆ SRP
- DEB
- ▲ Level spreader
- Erosion control treatment area (SRP or DEB)
- Stabilised entrance
- No Earthworks within 10m of Ngarara Stream

**Notes:**

1. Install all ESC measures shown on this plan before Phase 1 earthworks commence.
2. Maintain controls throughout construction and reinstate after rainfall events as needed.
3. All works are to follow the Erosion and Sediment Control Guide for Land Disturbing Activities in the Wellington Region (2021) and the certified ESCP.
4. No in-channel construction works are proposed within the Ngarara Stream corridor during Phase 1; any future in-channel works would be subject to separate staging and approvals.
5. The hill area may be accessed and worked in Phase 1, provided ESC measures for that stage are installed and operating.

**Sediment Control Plan – Phase 1B**  
Sheet 12 of 17

Waikanae North Developments Ltd

Waikanae North  
Peka Peka, Kapiti Coast

© Landlink Limited 2025



1 Ngaio Road, Waikanae 5036 + contactus@Landlink.nz

STAGE	PH1 B
REVISION	C
REVISION DETAILS	Issued For Consent

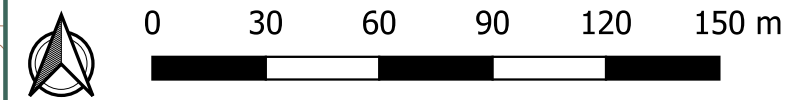
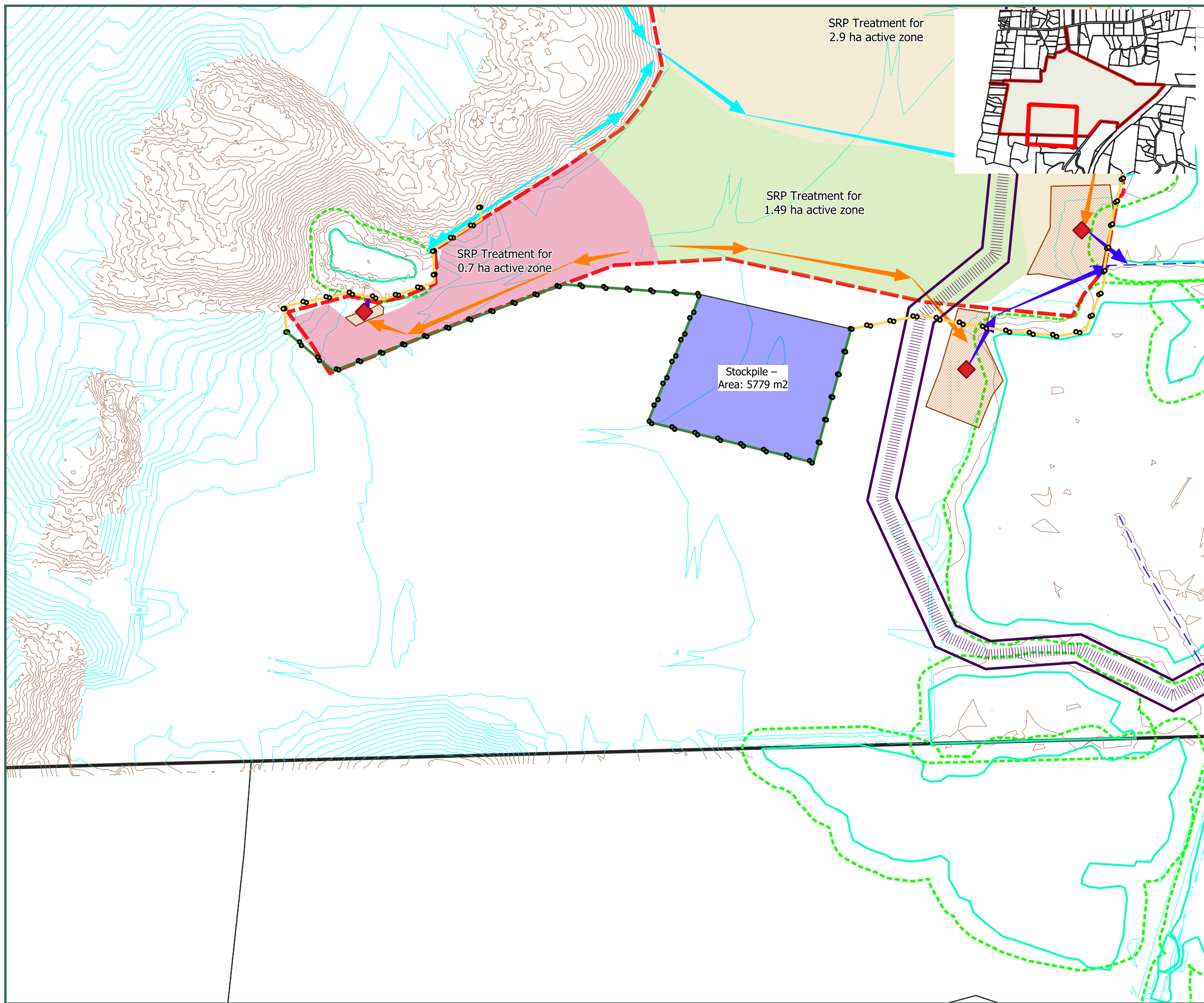
DESIGNED BY	JJH
DRAWN BY	JJH
APPROVED BY	PT

This drawing contains data from other sources and has been prepared for a specific site and event. Landlink Limited does not accept any liability for its accuracy, content or unauthorised use.

DATE 2026-03-13

SCALE Refer Scale Bar

2911-PH1B-EC-232



- LEGEND**
- EX contours (1.0 m)
  - Proposed contours (1.0 m)
  - - - Indicative EX Catchments flow path 2021 lidar
  - - - EX Watercourse
  - Wetlands Retained
  - 10m Wetlands buffer
  - Phase 1B works extent
  - HILL STAGE
  - Stockpile
  - ▶ Treated clean water conveyance
  - ▶ Clean\_Diversion
  - ▶ Dirty\_Diversion
  - Silt fence
  - Silt fence (super)
  - ▨ Peat\_Drying\_Area
  - Haul Road
  - ◆ SRP
  - DEB
  - ▲ Level spreader
  - ▨ Erosion control treatment area (SRP or DEB)
  - ▨ Stabilised entrance
  - No Earthworks within 10m of Ngarara Stream

- Notes:**
1. Install all ESC measures shown on this plan before Phase 1 earthworks commence.
  2. Maintain controls throughout construction and reinstate after rainfall events as needed.
  3. All works are to follow the Erosion and Sediment Control Guide for Land Disturbing Activities in the Wellington Region (2021) and the certified ESCP.
  4. No in-channel construction works are proposed within the Ngarara Stream corridor during Phase 1; any future in-channel works would be subject to separate staging and approvals.
  5. The hill area may be accessed and worked in Phase 1, provided ESC measures for that stage are installed and operating.

**Sediment Control Plan – Phase 1B**  
Sheet 13 of 17

Waikanae North Developments Ltd

Waikanae North  
Peka Peka, Kapiti Coast

© Landlink Limited 2025



1 Ngaio Road, Waikanae 5036 + contactus@Landlink.nz

STAGE	PH1 B
REVISION	C
REVISION DETAILS	Issued For Consent

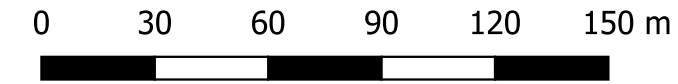
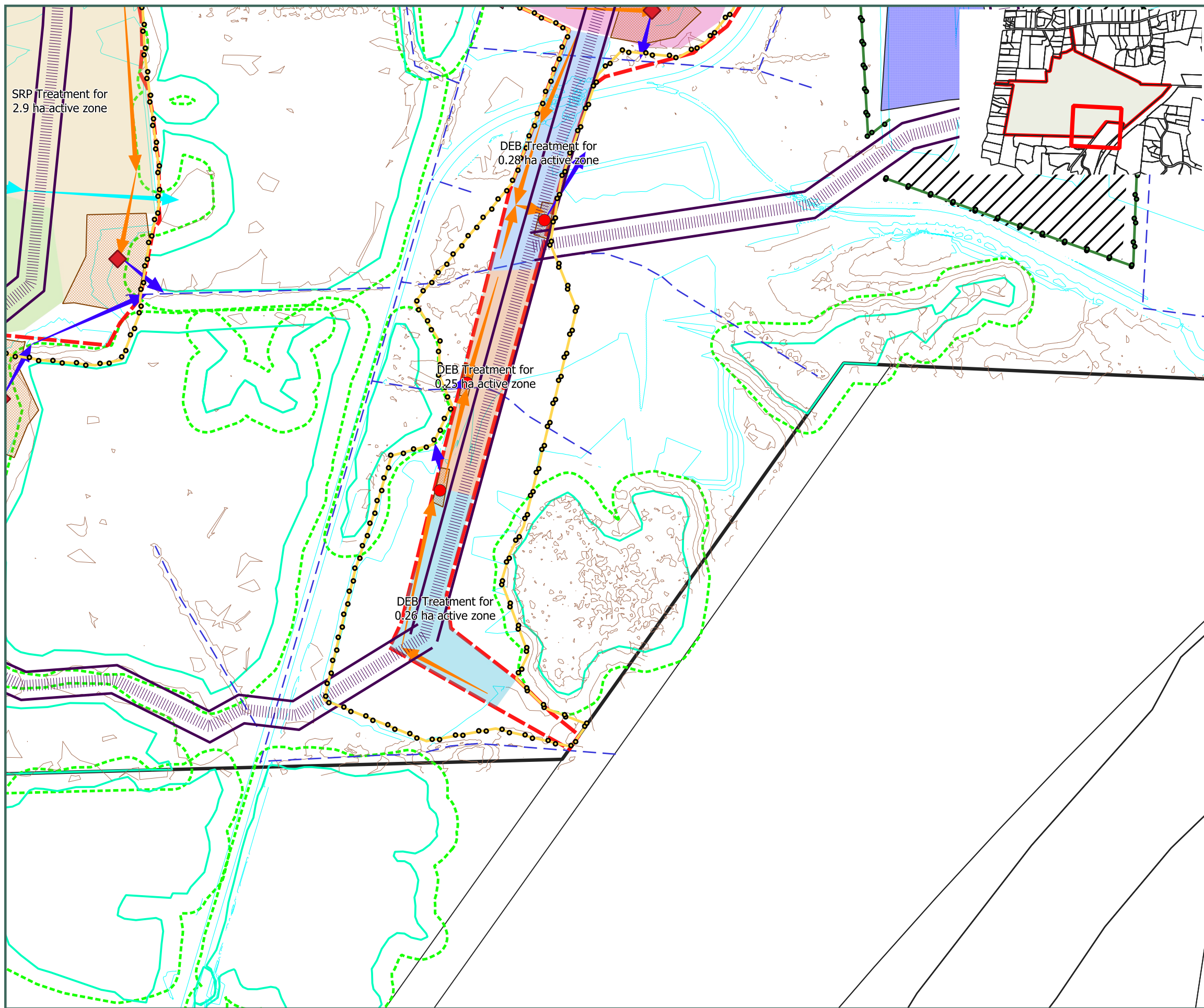
DESIGNED BY	JJH
DRAWN BY	JJH
APPROVED BY	PT

This drawing contains data from other sources and has been prepared for a specific site and event. Landlink Limited does not accept any liability for its accuracy, content or unauthorised use.

DATE 2026-03-13

SCALE Refer Scale Bar

2911-PH1B-EC-233



**LEGEND**

- EX contours (1.0 m)
- Proposed contours (1.0 m)
- - - Indicative EX Catchments flow path 2021 lidar
- - - EX Watercourse
- Wetlands Retained
- 10m Wetlands buffer
- Phase 1B works extent
- HILL STAGE
- Stockpile
- ▶ Treated clean water conveyance
- ▶ Clean\_Diversion
- ▶ Dirty\_Diversion
- Silt fence
- Silt fence (super)
- ▨ Peat\_Drying\_Area
- Haul Road
- ◆ SRP
- DEB
- ▲ Level spreader
- ▨ Erosion control treatment area (SRP or DEB)
- ▨ Stabilised entrance
- No Earthworks within 10m of Ngarara Stream

- Notes:
1. Install all ESC measures shown on this plan before Phase 1 earthworks commence.
  2. Maintain controls throughout construction and reinstate after rainfall events as needed.
  3. All works are to follow the Erosion and Sediment Control Guide for Land Disturbing Activities in the Wellington Region (2021) and the certified ESCP.
  4. No in-channel construction works are proposed within the Ngarara Stream corridor during Phase 1; any future in-channel works would be subject to separate staging and approvals.
  5. The hill area may be accessed and worked in Phase 1, provided ESC measures for that stage are installed and operating.

**Sediment Control Plan – Phase 1B**  
Sheet 14 of 17

Waikanae North Developments Ltd

Waikanae North  
Peka Peka, Kapiti Coast

© Landlink Limited 2025



1 Ngaio Road, Waikanae 5036 + contactus@Landlink.nz

STAGE	PH1
	B
REVISION	C
REVISION DETAILS	Issued For Consent

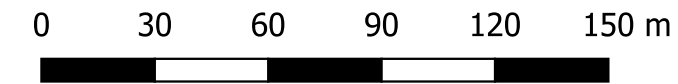
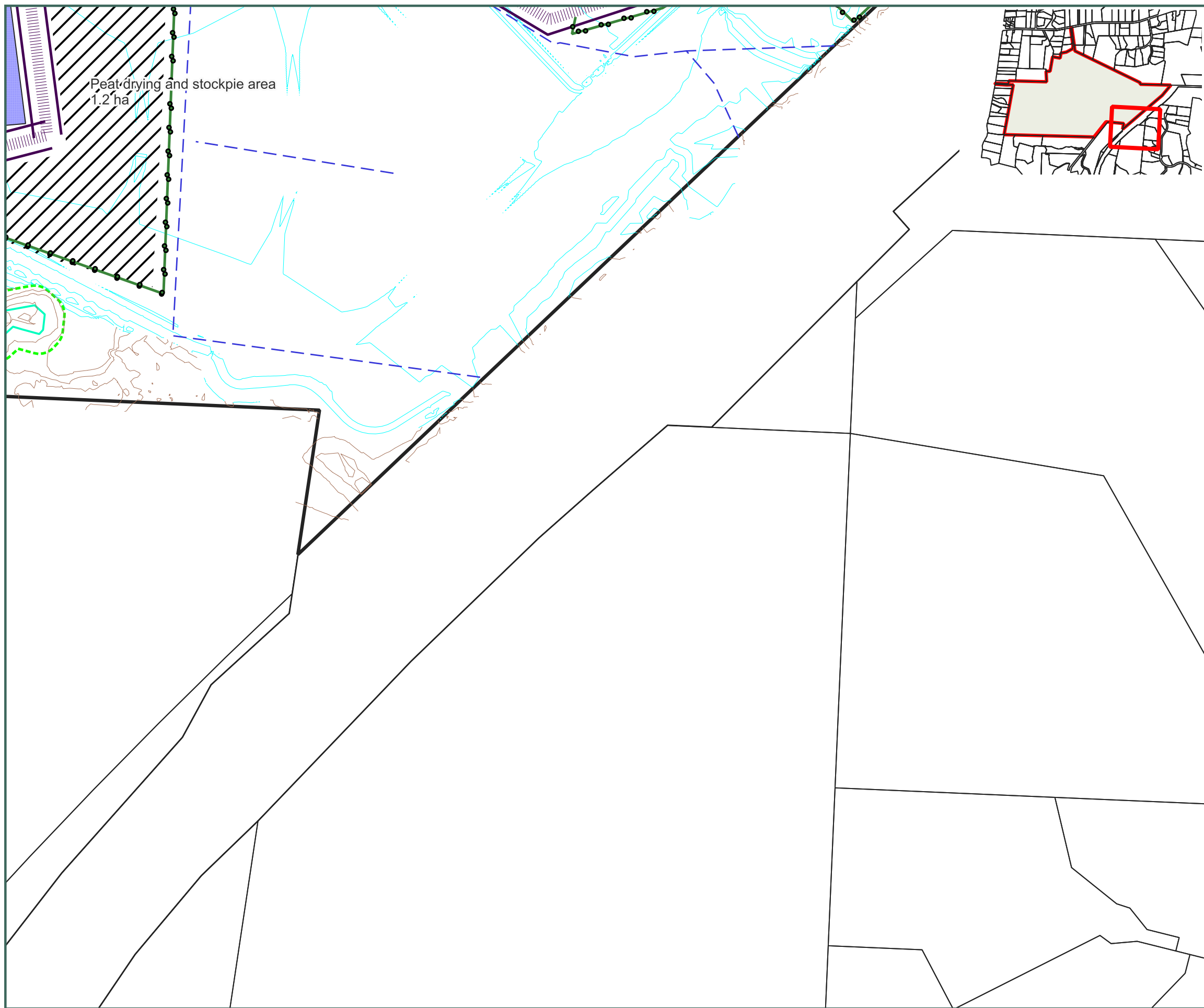
DESIGNED BY	JJH
DRAWN BY	JJH
APPROVED BY	PT

This drawing contains data from other sources and has been prepared for a specific site and event. Landlink Limited does not accept any liability for its accuracy, content or unauthorised use.

DATE 2026-03-13

SCALE Refer Scale Bar

**2911-PH1B-EC-234**



**LEGEND**

- EX contours (1.0 m)
- Proposed contours (1.0 m)
- - - Indicative EX Catchments flow path 2021 lidar
- EX Watercourse
- Wetlands Retained
- 10m Wetlands buffer
- Phase 1B works extent
- HILL STAGE
- Stockpile
- ▶ Treated clean water conveyance
- ▶ Clean\_Diversion
- ▶ Dirty\_Diversion
- Silt fence
- Silt fence (super)
- / / Peat\_Drying\_Area
- Haul Road
- ◆ SRP
- DEB
- ▲ Level spreader
- Erosion control treatment area (SRP or DEB)
- Stabilised entrance
- No Earthworks within 10m of Ngarara Stream

**Notes:**

1. Install all ESC measures shown on this plan before Phase 1 earthworks commence.
2. Maintain controls throughout construction and reinstate after rainfall events as needed.
3. All works are to follow the Erosion and Sediment Control Guide for Land Disturbing Activities in the Wellington Region (2021) and the certified ESCP.
4. No in-channel construction works are proposed within the Ngarara Stream corridor during Phase 1; any future in-channel works would be subject to separate staging and approvals.
5. The hill area may be accessed and worked in Phase 1, provided ESC measures for that stage are installed and operating.

**Sediment Control Plan – Phase 1B**

Sheet 15 of 17

Waikanae North Developments Ltd

Waikanae North

Peka Peka, Kapiti Coast

© Landlink Limited 2025



1 Ngaio Road, Waikanae 5036 + contactus@Landlink.nz

STAGE	PH1
REVISION	B
REVISION DETAILS	C
Issued For Consent	

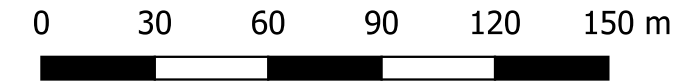
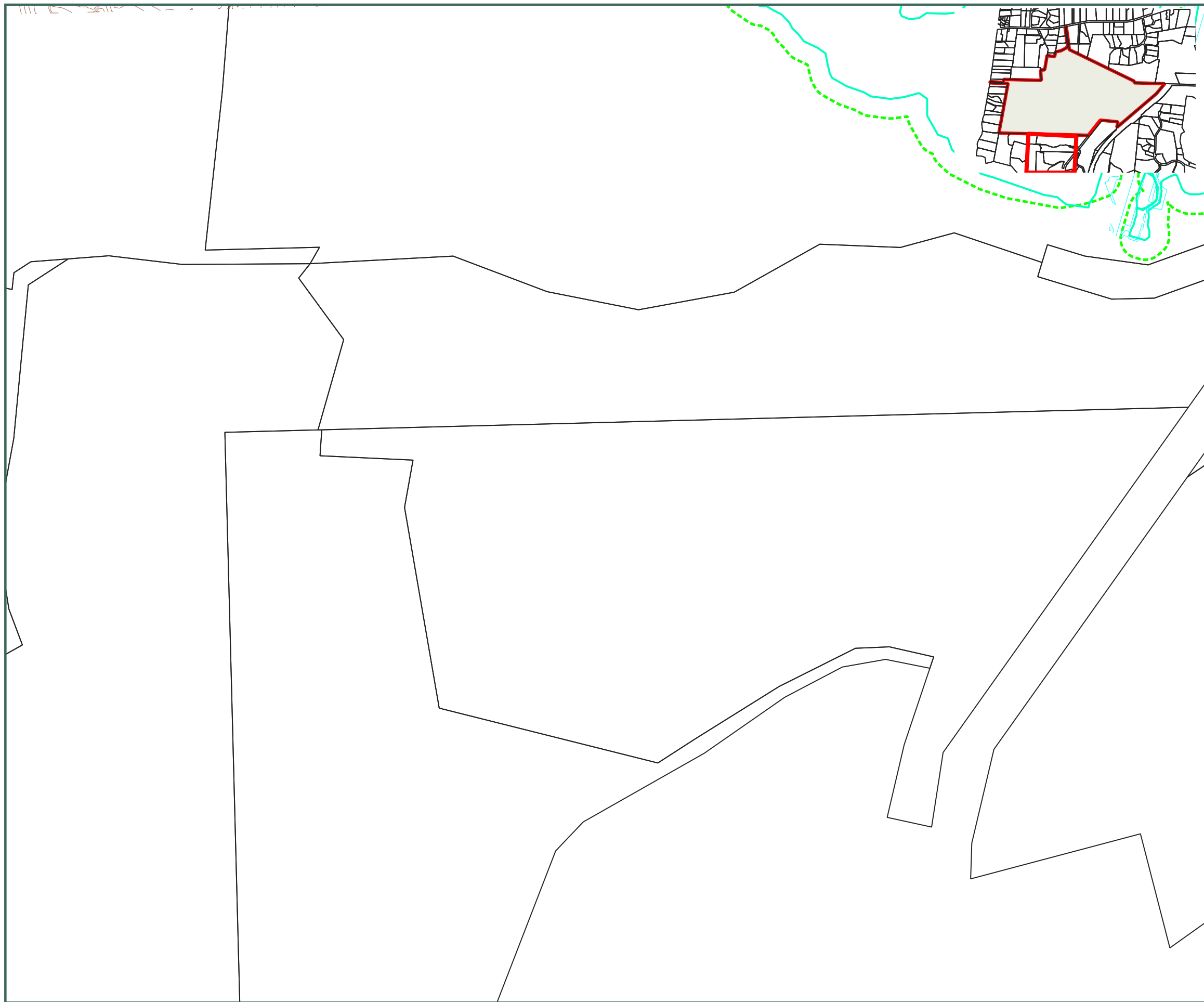
DESIGNED BY	JJH
DRAWN BY	JJH
APPROVED BY	PT

This drawing contains data from other sources and has been prepared for a specific site and event. Landlink Limited does not accept any liability for its accuracy, content or unauthorised use.

DATE 2026-03-13

SCALE Refer Scale Bar

2911-PH1B-EC-235



**LEGEND**

- EX contours (1.0 m)
- Proposed contours (1.0 m)
- - - Indicative EX Catchments flow path 2021 lidar
- EX Watercourse
- Wetlands Retained
- 10m Wetlands buffer
- Phase 1B works extent
- HILL STAGE
- Stockpile
- ▶ Treated clean water conveyance
- ▶ Clean\_Diversion
- ▶ Dirty\_Diversion
- Silt fence
- Silt fence (super)
- / / Peat\_Drying\_Area
- Haul Road
- ◆ SRP
- DEB
- ▲ Level spreader
- Erosion control treatment area (SRP or DEB)
- Stabilised entrance
- No Earthworks within 10m of Ngarara Stream

**Notes:**

1. Install all ESC measures shown on this plan before Phase 1 earthworks commence.
2. Maintain controls throughout construction and reinstate after rainfall events as needed.
3. All works are to follow the Erosion and Sediment Control Guide for Land Disturbing Activities in the Wellington Region (2021) and the certified ESCP.
4. No in-channel construction works are proposed within the Ngarara Stream corridor during Phase 1; any future in-channel works would be subject to separate staging and approvals.
5. The hill area may be accessed and worked in Phase 1, provided ESC measures for that stage are installed and operating.

**Sediment Control Plan – Phase 1B**  
Sheet 16 of 17

Waikanae North Developments Ltd

Waikanae North  
Peka Peka, Kapiti Coast

© Landlink Limited 2025



1 Ngaio Road, Waikanae 5036 + contactus@Landlink.nz

STAGE	PH1 B
REVISION	C
REVISION DETAILS	Issued For Consent

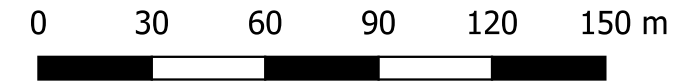
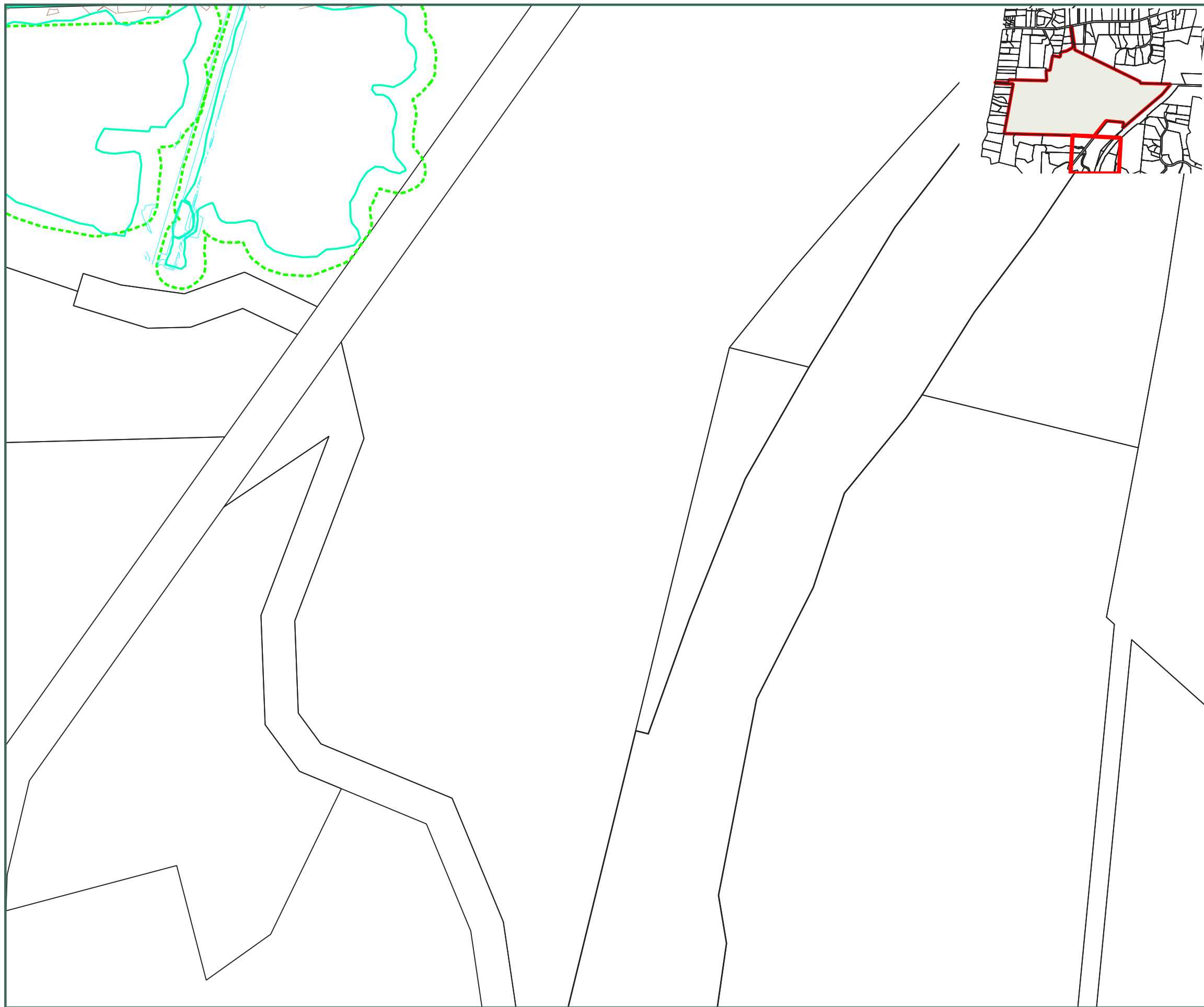
DESIGNED BY	JJH
DRAWN BY	JJH
APPROVED BY	PT

This drawing contains data from other sources and has been prepared for a specific site and event.  
Landlink Limited does not accept any liability for its accuracy, content or unauthorised use.

DATE 2026-03-13

SCALE Refer Scale Bar

2911-PH1B-EC-236



**LEGEND**

- EX contours (1.0 m)
- Proposed contours (1.0 m)
- - - Indicative EX Catchments flow path 2021 lidar
- EX Watercourse
- Wetlands Retained
- 10m Wetlands buffer
- Phase 1B works extent
- HILL STAGE
- Stockpile
- ▶ Treated clean water conveyance
- ▶ Clean\_Diversion
- ▶ Dirty\_Diversion
- Silt fence
- Silt fence (super)
- / / Peat\_Drying\_Area
- Haul Road
- ◆ SRP
- DEB
- ▲ Level spreader
- Erosion control treatment area (SRP or DEB)
- Stabilised entrance
- No Earthworks within 10m of Ngarara Stream

**Notes:**

1. Install all ESC measures shown on this plan before Phase 1 earthworks commence.
2. Maintain controls throughout construction and reinstate after rainfall events as needed.
3. All works are to follow the Erosion and Sediment Control Guide for Land Disturbing Activities in the Wellington Region (2021) and the certified ESCP.
4. No in-channel construction works are proposed within the Ngarara Stream corridor during Phase 1; any future in-channel works would be subject to separate staging and approvals.
5. The hill area may be accessed and worked in Phase 1, provided ESC measures for that stage are installed and operating.

**Sediment Control Plan – Phase 1B**

Sheet 17 of 17

Waikanae North Developments Ltd

Waikanae North

Peka Peka, Kapiti Coast

© Landlink Limited 2025



1 Ngaio Road, Waikanae 5036 + contactus@Landlink.nz

STAGE	PH1 B
REVISION	C
REVISION DETAILS	Issued For Consent

DESIGNED BY	JJH
DRAWN BY	JJH
APPROVED BY	PT

This drawing contains data from other sources and has been prepared for a specific site and event. Landlink Limited does not accept any liability for its accuracy, content or unauthorised use.

DATE 2026-03-13

SCALE Refer Scale Bar

**2911-PH1B-EC-237**