

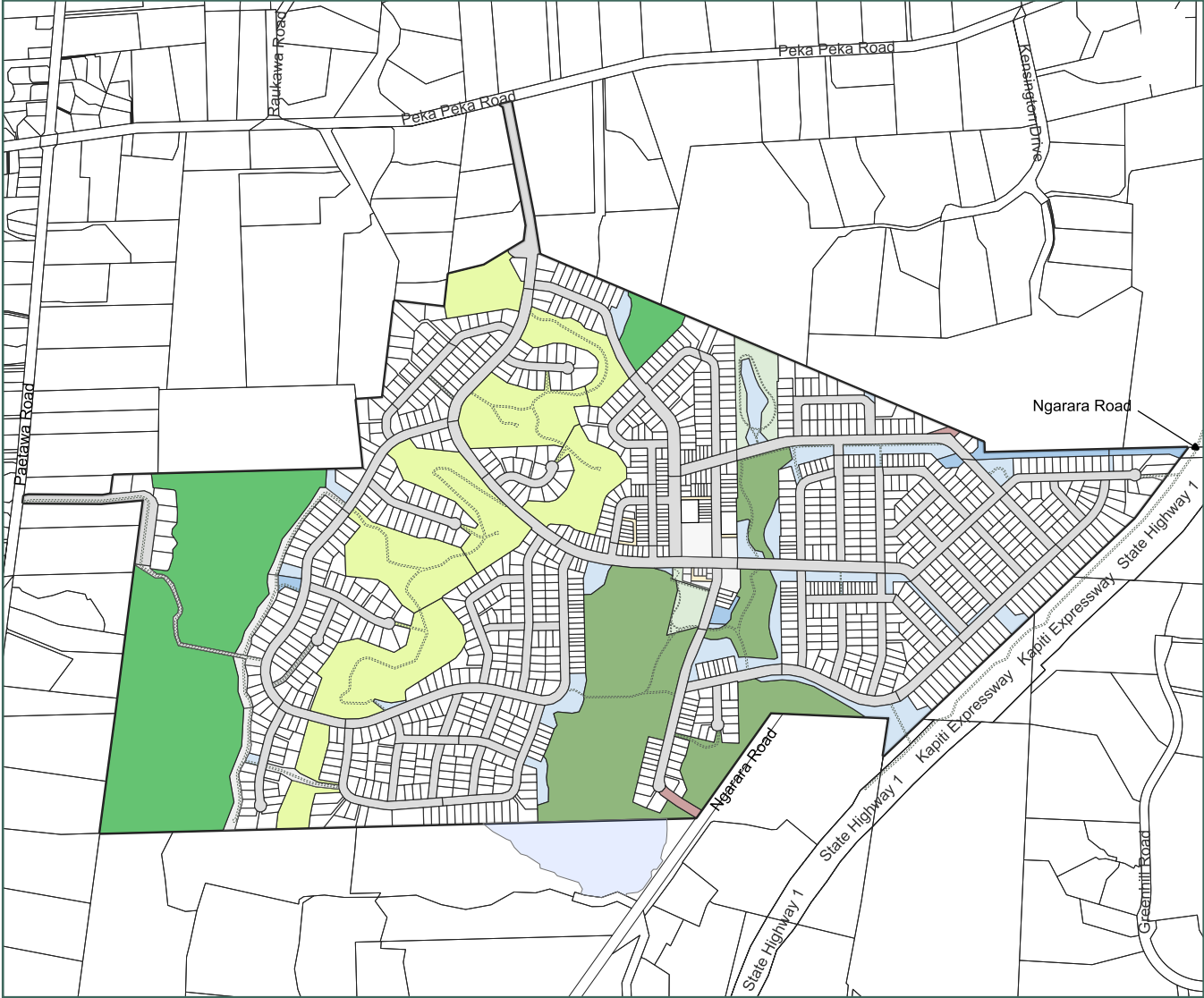
A

Appendix A

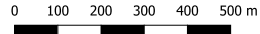


- Lot Subdivision Plan
- Activity Framework
- Medium Density Typology Reference Plan
- Medium Density Reference Lots
- Local Centre Precinct Plans

Lot Subdivision Plan (Landlink)

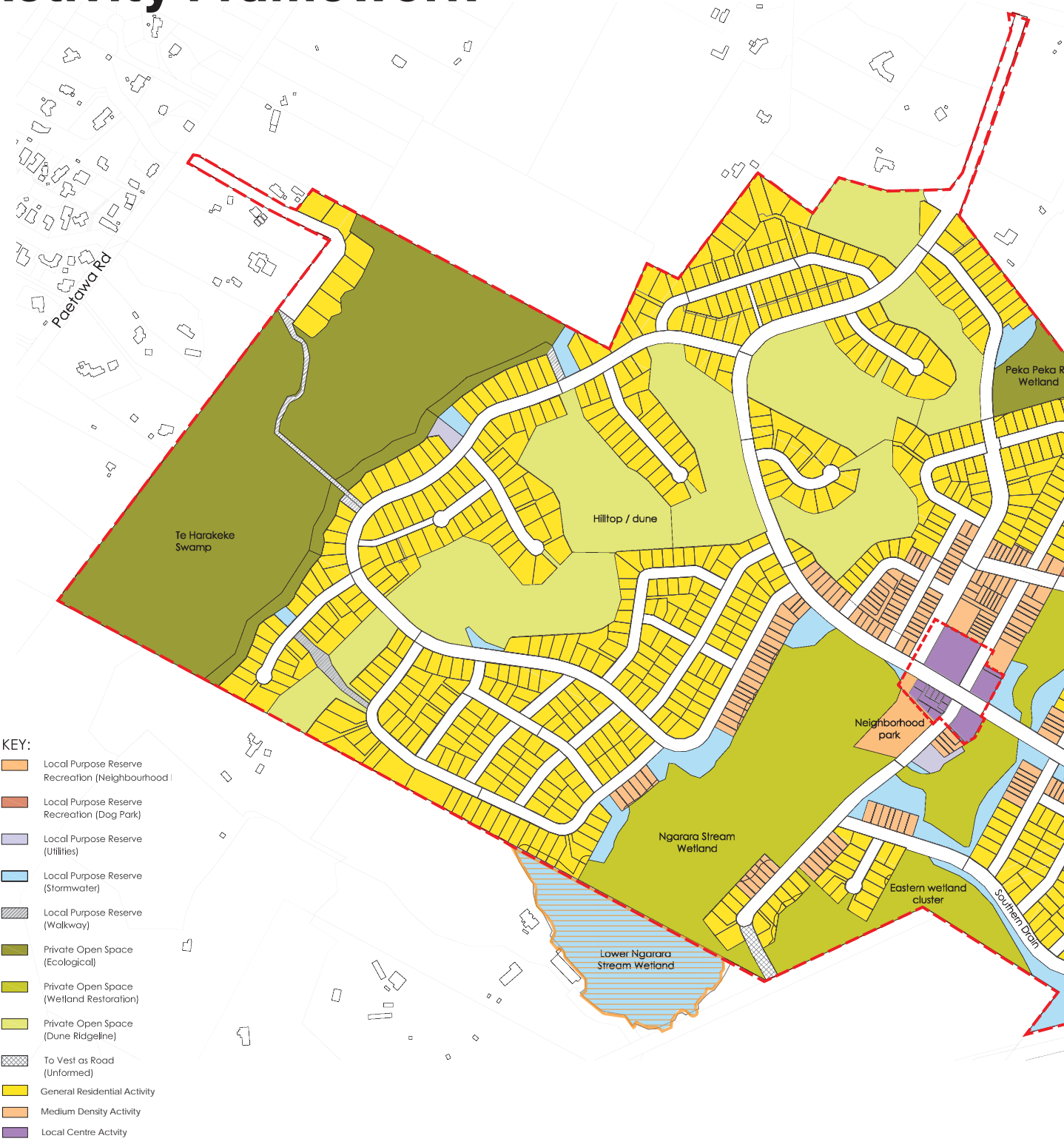


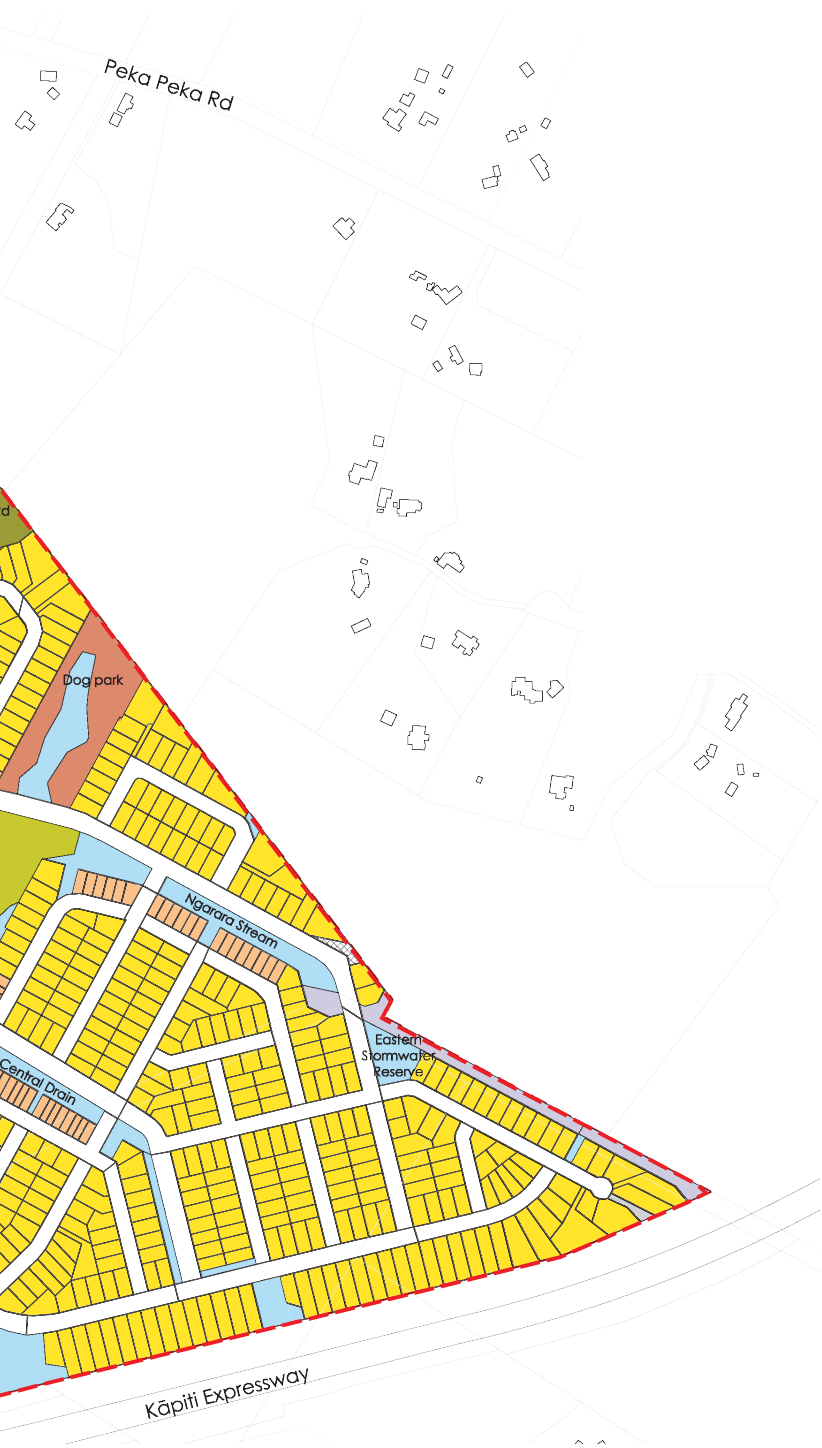
Landlink Scheme Plan - note that this drawing is a superseded version



- Legend
- Private Lot
 - Joint Owned Access Lot
 - Road Reserve
 - Recreation Reserve
 - Local Purpose Reserve (Utilities)
 - Local Purpose Reserve (Stormwater)
 - Local Purpose Reserve (Walkway)
 - Private Open Space (Ecological)
 - Private Open Space (Dune Ridgeline)
 - Private Open Space (Wetland Restoration)
 - To Vest as Road (Unformed) in Kapiti Coast District Council

Activity Framework





MD Typology Reference Plan





Key

- Semi Detached 1 / EOT 1
- Semi Detached 2 / EOT 2
- Terrace Housing 1
- Terrace Housing 2
- Terrace Housing 3
- Walk Up Apartments
- Mixed Use
- SuperLot Boundary

MD-xx Medium Density reference number

MD Reference Lots

MD-1	1000
	1001
MD-2	1002
	1003
MD-3	1004
	1005
	1006
	1007
	1008
MD-4	1009
	1010
MD-5	1011
	1012
	1013
	1014
	1015
MD-6	1016
	1017
MD-7	1018
	1019
MD-8	1020
	1021
	1022
MD-9	1023
	1024
MD-10	1025
	1026
MD-11	1027
	1028
MD-12	1029
	1030
MD-13	1031
	1032
MD-14	1033
	1034
MD-15	1035
	1036
MD-16	1037
	1038
	1039
	1040
	1041
MD-17	1042
	1043
	1044
	1045
	1046
MD-18	1047

	1048
	1049
	1050
	1051
	1052
MD-19	1053
	1054
	1055
	1056
	1057
MD-20	1058
	1059
	1060
	1061
	1062
	1063
MD-21	1064
	1065
	1066
	1067
MD-22	1068
	1069
	1070
	1153
	1154
MD-23	1071
	1072
MD-24	1073
	1074
	1075
	1076
	1077
	1078
MD-25	1079
	1080
	1081
	1082
	1083
	1084
MD-26	1085
	1086
	1087
	1088
	1089
MD-27	1090
	1091
	1092
	1093

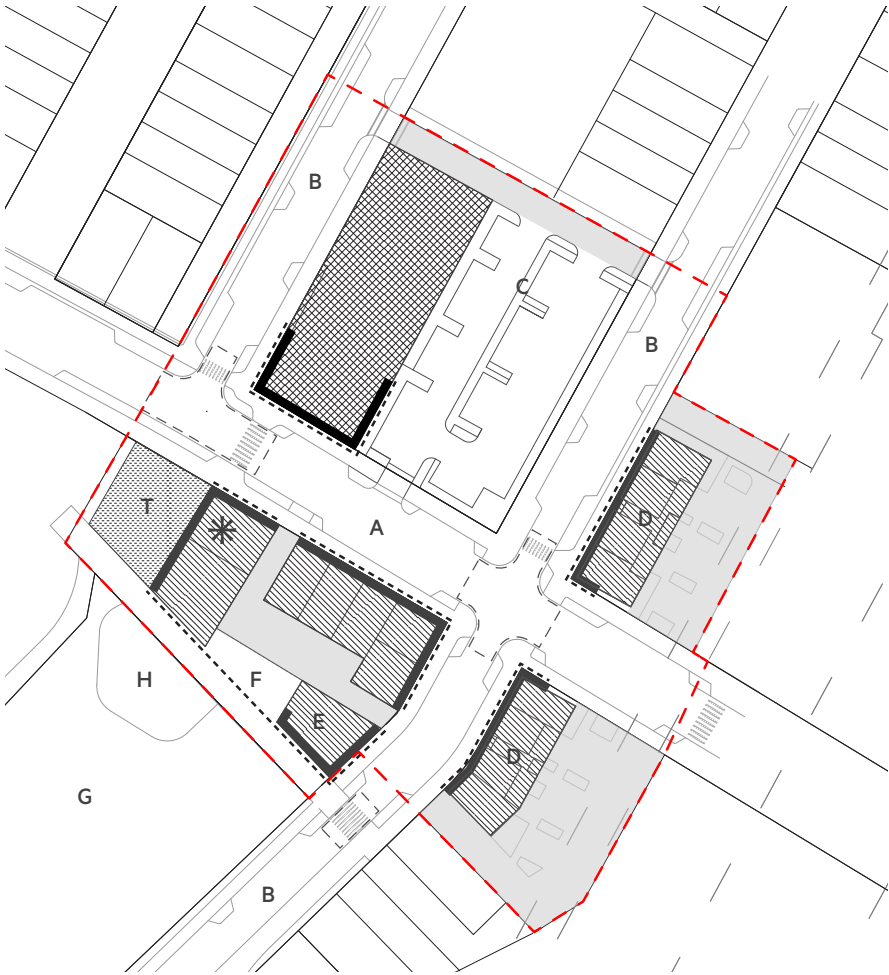
MD-28	1094
	1095
	1096
	1097
MD-29	1098
	1099
MD-30	1100
	1101
MD-31	1102
	1103
MD-32	1104
	1105
MD-33	1106
	1107
	1108
MD-34	1109
	1110
MD-35	1111
	1112
MD-36	1113
	1114
	1115
MD-37	1116
	1117
MD-38	1118
	1119
	1120
	1121
	1122
	1123
MD-39	1124
	1125
	1126
	1127
MD-40	1128
	1129
	1130
MD-41	1131
	1132
	1133
	1134
	1135
MD-42	1136
	1137
	1138
	1139
	1140
	1141
MD-43	1141

	1150
	1151
	1152
MD-44	1142
	1143
MD-45	1144
	1145
MD-46	1146
	1147
MD-47	1148
	1149
MD-48	1155
	1156
MD-49	1157
	1158
MD-50	1159
	1160
MD-51	1161
	1162
MD-52	1163
	1164
	1165
	1166
	1167
MD-53	1168
	1169
MD-54	1170
	1171
MD-55	1172
	1173
MD-56	1197
	1174
MD-57	1175
	1176
MD-58	1177
	1178
MD-59	1179
	1180
MD-60	1181
	1182
MD-61	1183
	1184
MD-62	1185
	1186
MD-63	1187
	1188
MD - 64	1189
	1190

	1191
	1192
	1193
	1194
	1195
	1196
MD - 65	1500
MD - 66	1501
MD - 67	2001
MD - 68	2002

Local Centre Plan A

Waikanae North Local Centre
Precinct Plan

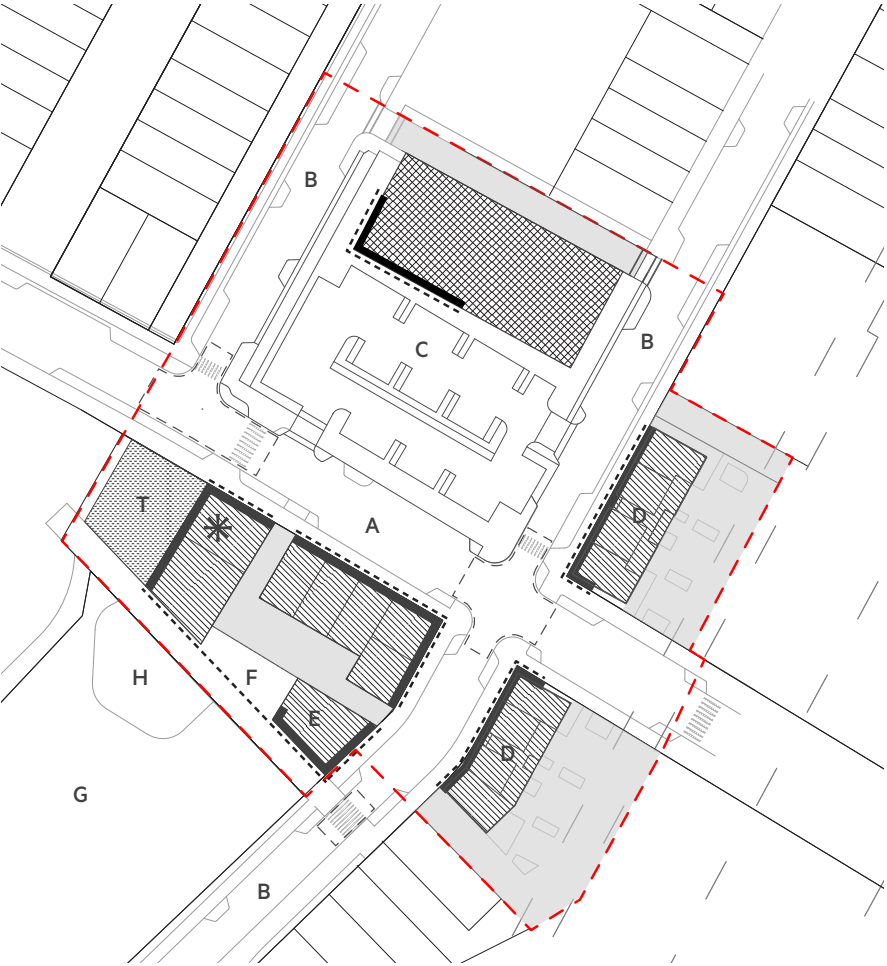


KEY

- Local Centre Boundary
- Ground Floor Retail / Commercial / Community
- Anchor Store (1,000-1,200sq.m)
- Town Square (Public)
- Primary Frontage
- Veranda
- * Landmark/ Accent Opportunity
- Service / parking
- Raised surface + crossings
- A** Primary Collector + on-street parking
- B** Secondary Collector + on-street parking
- C** Anchor store & centre parking
- D** Mixed use commercial / residential
- E** Community centre
- F** Covered multi-purpose space
- G** Neighbourhood reserve (5,000sq.m)
- H** Equipped play area

Local Centre Plan B

Waikanae North Local Centre
Precinct Plan



KEY

- Local Centre Boundary
- Ground Floor Retail / Commercial / Community
- Anchor Store (1,000-1,200sq.m)
- Town Square (Public)
- Primary Frontage
- Veranda
- * Landmark/ Accent Opportunity
- Service / parking
- Raised surface + crossings
- A** Primary Collector + on-street parking
- B** Secondary Collector + on-street parking
- C** Anchor store & centre parking
- D** Mixed use commercial / residential
- E** Community centre
- F** Covered multi-purpose space
- G** Neighbourhood reserve (5,000sq.m)
- H** Equipped play area