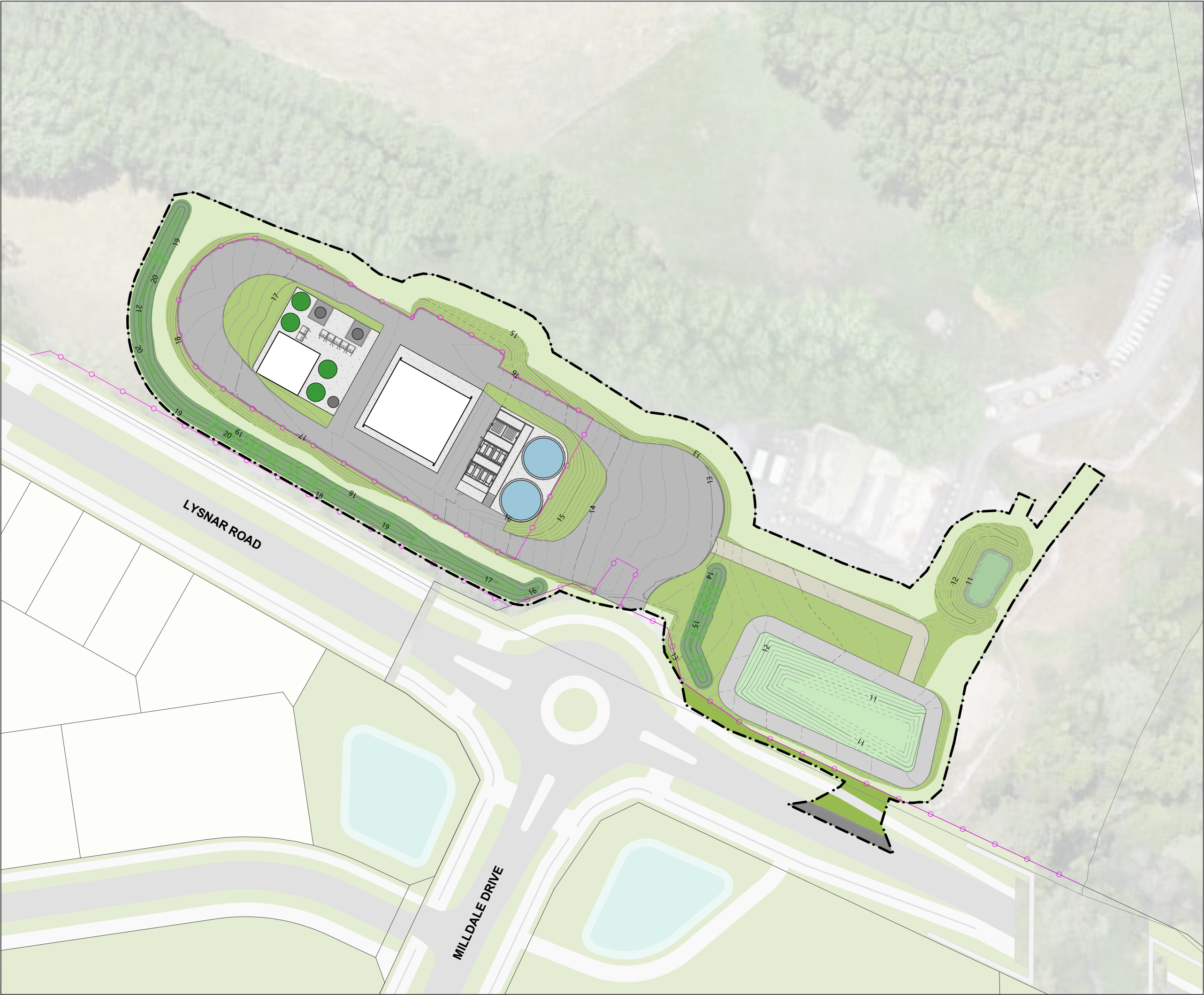


MILLDALE WASTEWATER
TREATMENT PLANT

PROJECT ADDRESS		
MILLDALE, AUCKLAND		
PROJECT STATUS		
FAST TRACK APPLICATION		
PROJECT NO.	ISSUED DATE	REV
P24-189	MARCH 2025	1





GENERAL NOTES

REFER TO ENGINEER'S DRAWING FOR FURTHER DETAIL.

REFER TO LANDSCAPE ARCHITECT'S DRAWING FOR PLANTING SCHEDULE

FINAL FINISHED FLOOR LEVEL (FFL) IS TO BE CONFIRMED AT DETAIL DESIGN STAGE

SITE LEGEND

- PROPOSED WASTEWATER TREATMENT PLANT WORK EXTENT
- PROPOSED BUILDING PLATFORM
- PROPOSED CONCRETE SURFACE
- PROPOSED CONCRETE MAINTENANCE TRACK
- PROPOSED GRAVEL MAINTENANCE TRACK
- PROPOSED LANDSCAPING
- PROPOSED STORMWATER DRY BASIN
- PROPOSED LAND CONTACT INFILTRATION DEVICE
- 2.0m HIGH LANDSCAPE BUND
- 1.8m SITE SECURITY WIRE FENCE AND GATES TO TIE INTO EXISTING

REVISION DETAILS		BY	DATE
1	FAST TRACK APPLICATION	SW	FEB 2025

DESIGNED	WOODS	MILLDALE, AUCKLAND
DRAWN	SW	
CHECKED	SW	
APPROVED		
		WOODS.CO.NZ

MILLDALE WASTEWATER TREATMENT PLANT

OVERALL SITE PLAN

STATUS	FAST TRACK APPLICATION	REV
SCALE	1:750 @A3	1
COUNCIL	AUCKLAND COUNCIL	
DWG NO	P24-189-UD402	



SITE LEGEND

- 1 TREATMENT BUILDING
- 2 REVERSE OSMOSIS BUILDING
- 3 ACETIC ACID TANK
- 4 SODIUM HYDROXIDE TANK
- 5 WASTE ACTIVATED SLUDGE TANKS
- 6 PACKAGED CHEMICAL STORAGE
- 7 PERMEATE STORAGE TANKS
- 8 ODOUR SCRUBBER
- 9 CHEMICAL DELIVERY APRON
- 10 MEMBRANE TANKS
- 11 PRE-ANOXIC TANK
- 12 POST-ANOXIC TANK
- 13 AERATION TANK

REVISION DETAILS		BY	DATE
1	FAST TRACK APPLICATION	SW	FEB 2025

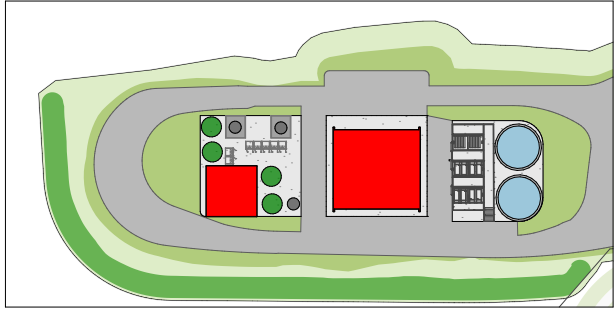
DESIGNED	WOODS	MILLDALE, AUCKLAND
DRAWN	SW	
CHECKED	SW	
APPROVED		WOODS.CO.NZ

MILLDALE WASTEWATER
TREATMENT PLANT

SITE PLAN

STATUS	FAST TRACK APPLICATION	REV
SCALE	1:250 @A3	1
COUNCIL	AUCKLAND COUNCIL	
DWG NO	P24-189-UD403	





ELEVATION NOTES

GENERAL SITE FACILITIES WITHIN THE TREATMENT PLANT BUILDING ARE TO BE DESIGNED DURING DETAIL DESIGN STAGE.

FINAL SELECTION OF CLADDING, MATERIAL AND COLOURS ARE TO BE CONFIRMED DURING DETAIL DESIGN STAGE.

TREATMENT TANKS, CHEMICAL STORAGE AND ASSOCIATED STRUCTURES ARE NOT SHOWN FOR CLARITY PURPOSE

BUILDING STRUCTURE

200mm PRECAST CONCRETE WALL PANELS WITH ANTI-GRAFFITI SEALER.

CLADDING PROFILE

METALCRAFT ESPAN 470 VERTICAL CLADDING

ROOFING PROFILE

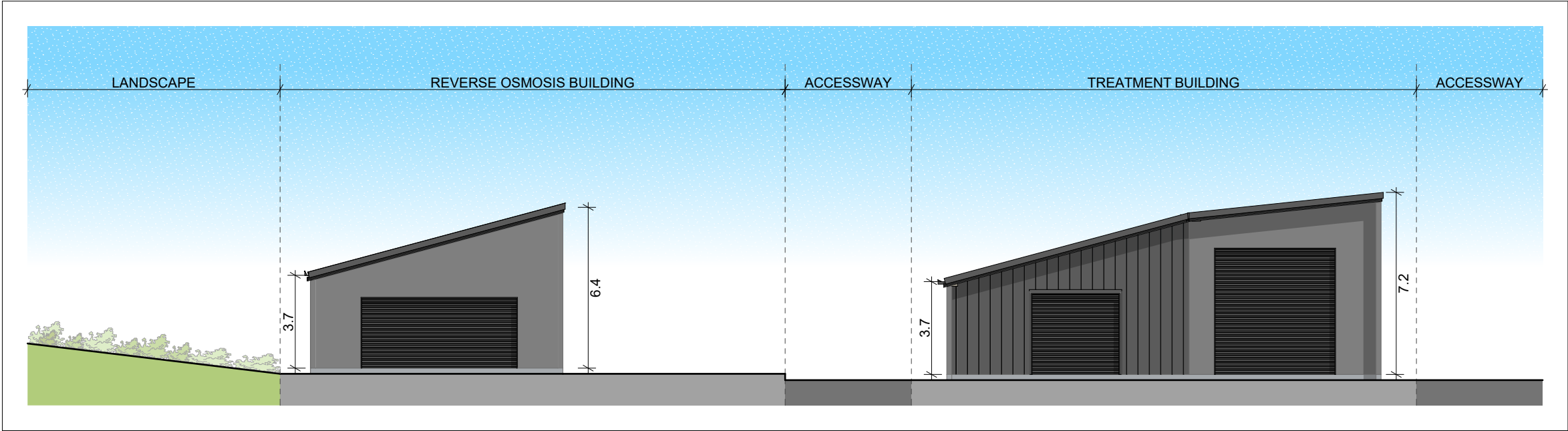
METALCRAFT ESPAN 470 ROOFING

SERVICES

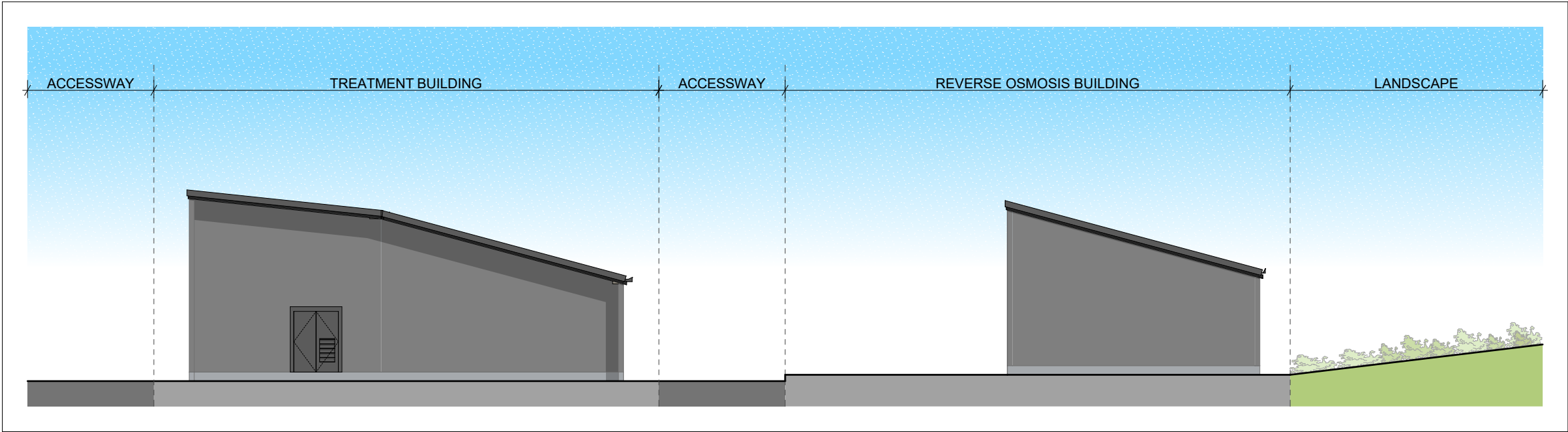
FASCIA METALCRAFT FASCIA 155

SPOUTING BOX GUTTER 125

DOWNSPIPE METALCRAFT RP80mm DOWNSPIPE



2 SOUTH ELEVATION 1:200



5 NORTH ELEVATION 1:200

REVISION DETAILS		BY	DATE
1	FAST TRACK APPLICATION	SW	FEB 2025

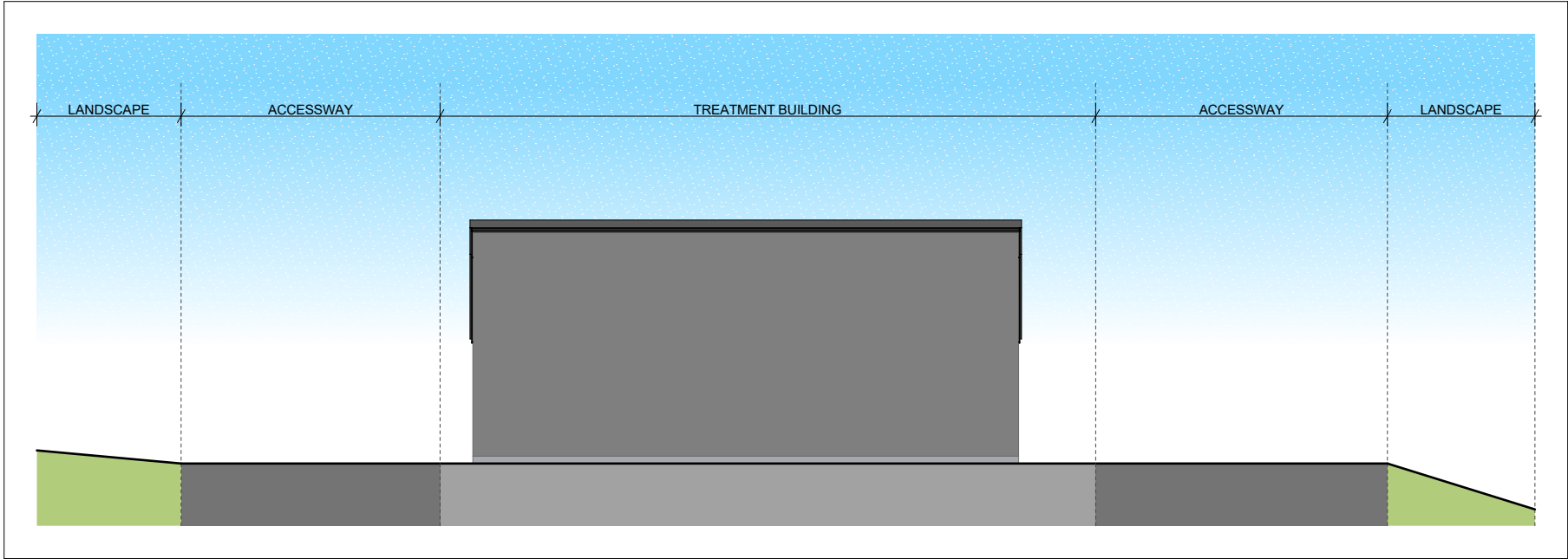
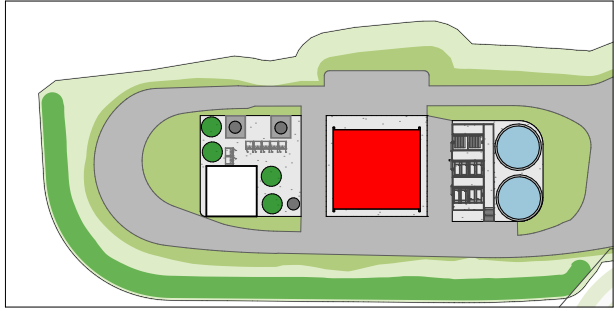
DESIGNED	WOODS	MILLDALE, AUCKLAND
DRAWN	SW	
CHECKED	SW	
APPROVED		WOODS.CO.NZ



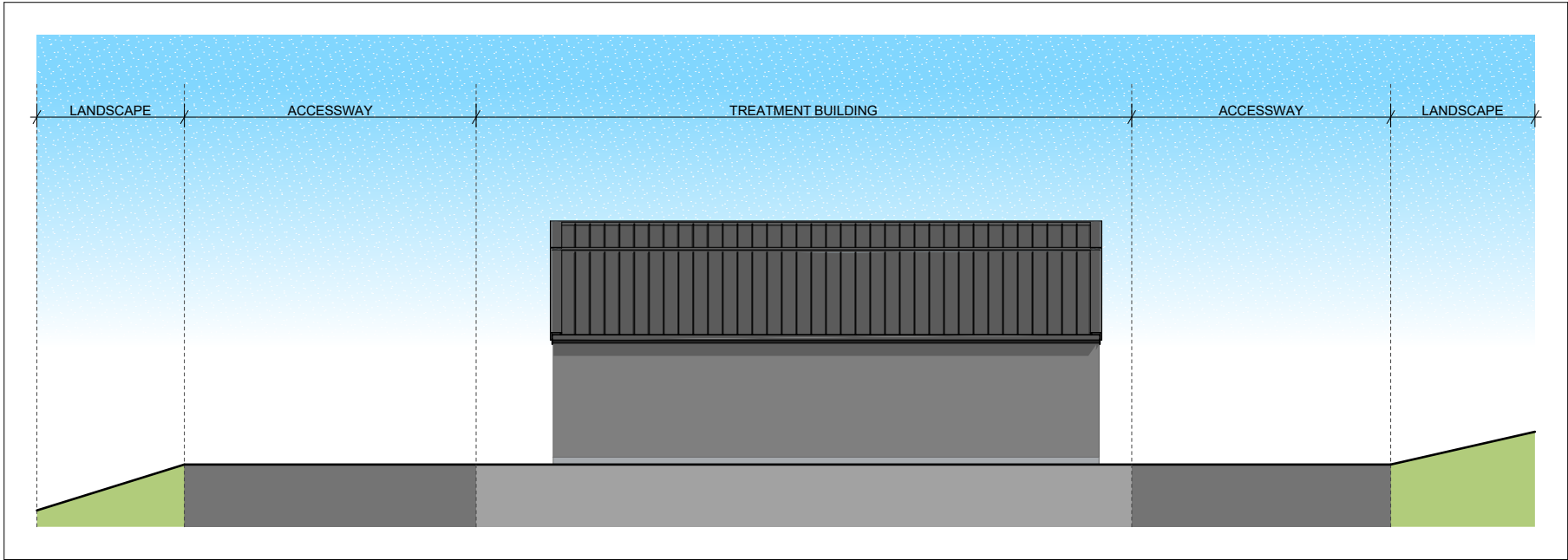
MILLDALE WASTEWATER TREATMENT PLANT

ELEVATIONS

STATUS	FAST TRACK APPLICATION	REV
SCALE	1:200 @A3	1
COUNCIL	AUCKLAND COUNCIL	
DWG NO	P24-189-UD404	



2
-
TREATMENT BUILDING - EAST ELEVATION
1:200



3
-
TREATMENT BUILDING - WEST ELEVATION
1:200



ELEVATION NOTES

GENERAL SITE FACILITIES WITHIN THE TREATMENT PLANT BUILDING ARE TO BE DESIGNED DURING DETAIL DESIGN STAGE.

FINAL SELECTION OF CLADDING, MATERIAL AND COLOURS ARE TO BE CONFIRMED DURING DETAIL DESIGN STAGE.

TREATMENT TANKS, CHEMICAL STORAGE AND ASSOCIATED STRUCTURES ARE NOT SHOWN FOR CLARITY PURPOSE

BUILDING STRUCTURE

200mm PRECAST CONCRETE WALL PANELS WITH ANTI-GRAFFITI SEALER.

CLADDING PROFILE

METALCRAFT ESPAN 470 VERTICAL CLADDING

ROOFING PROFILE

METALCRAFT ESPAN 470 ROOFING

SERVICES

FASCIA METALCRAFT FASCIA 155
SPOUTING BOX GUTTER 125
DOWNPIPE METALCRAFT RP80mm DOWNPIPE

REVISION DETAILS		BY	DATE
1	FAST TRACK APPLICATION	SW	FEB 2025

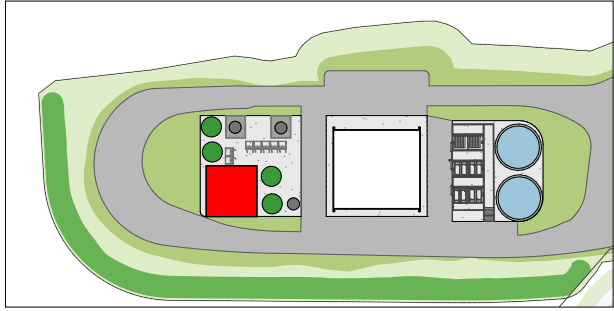
DESIGNED	WOODS	MILLDALE, AUCKLAND
DRAWN	SW	
CHECKED	SW	
APPROVED		WOODS.CO.NZ



MILLDALE WASTEWATER TREATMENT PLANT

ELEVATIONS

STATUS	FAST TRACK APPLICATION	REV
SCALE	1:200 @A3	1
COUNCIL	AUCKLAND COUNCIL	
DWG NO	P24-189-UD405	



ELEVATION NOTES

GENERAL SITE FACILITIES WITHIN THE TREATMENT PLANT BUILDING ARE TO BE DESIGNED DURING DETAIL DESIGN STAGE.

FINAL SELECTION OF CLADDING, MATERIAL AND COLOURS ARE TO BE CONFIRMED DURING DETAIL DESIGN STAGE.

TREATMENT TANKS, CHEMICAL STORAGE AND ASSOCIATED STRUCTURES ARE NOT SHOWN FOR CLARITY PURPOSE

BUILDING STRUCTURE

200mm PRECAST CONCRETE WALL PANELS WITH ANTI-GRAFFITI SEALER.

CLADDING PROFILE

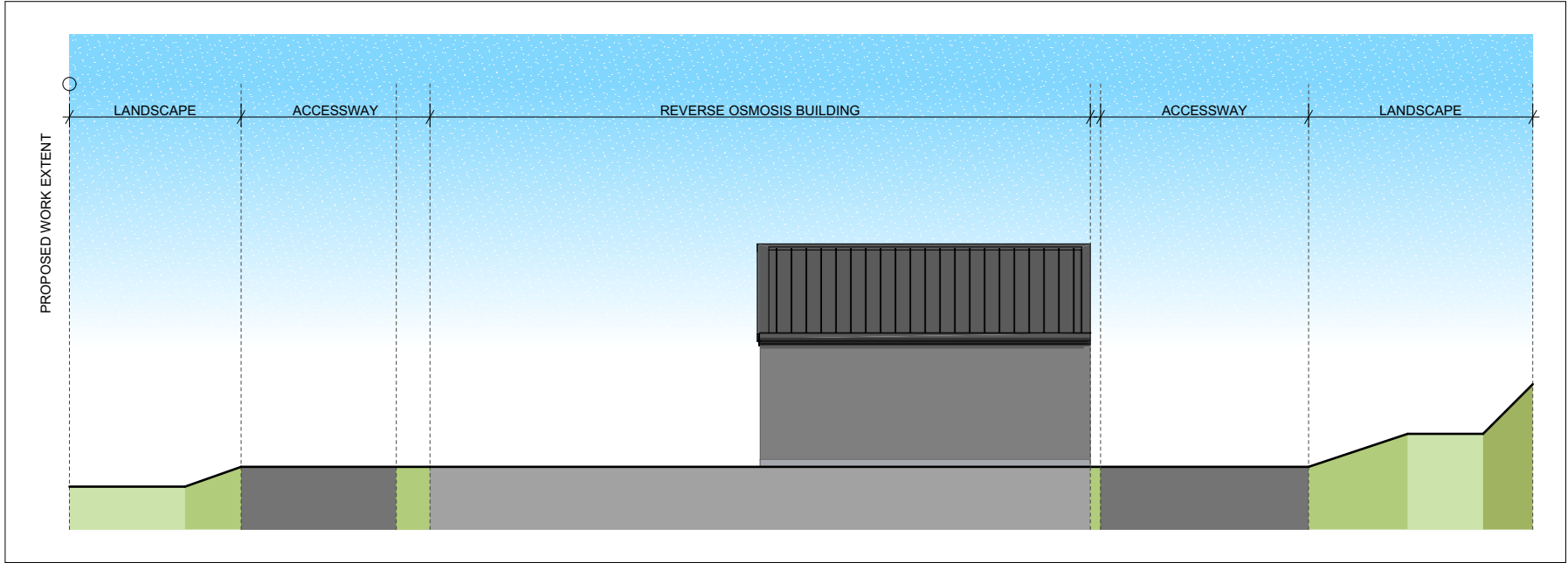
METALCRAFT ESPAN 470 VERTICAL CLADDING

ROOFING PROFILE

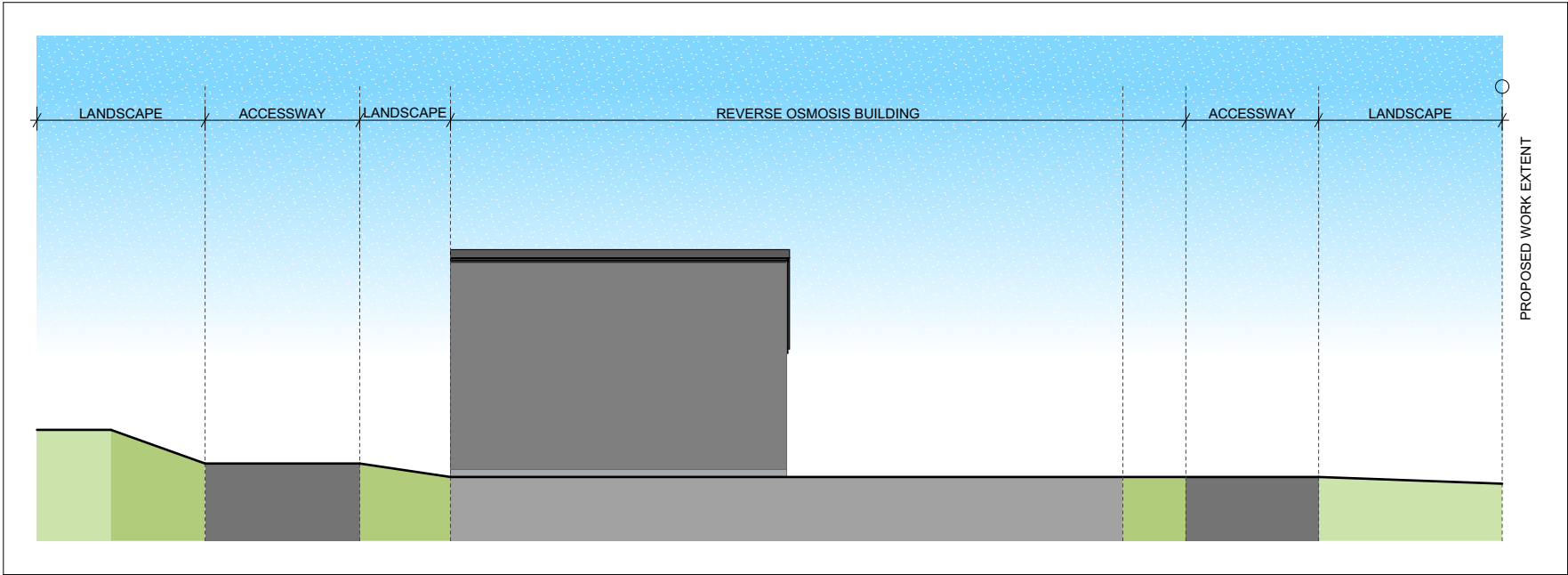
METALCRAFT ESPAN 470 ROOFING

SERVICES

- FASCIA METALCRAFT FASCIA 155
- SPOUTING BOX GUTTER 125
- DOWNPIPE METALCRAFT RP80mm DOWNPIPE



3 - REVERSE OSMOSIS BUILDING - WEST ELEVATION 1:200



2 - REVERSE OSMOSIS BUILDING - EAST ELEVATION 1:200

REVISION DETAILS		BY	DATE
1	FAST TRACK APPLICATION	SW	FEB 2025

DESIGNED	WOODS	MILLDALE, AUCKLAND
DRAWN	SW	
CHECKED	SW	
APPROVED		WOODS.CO.NZ



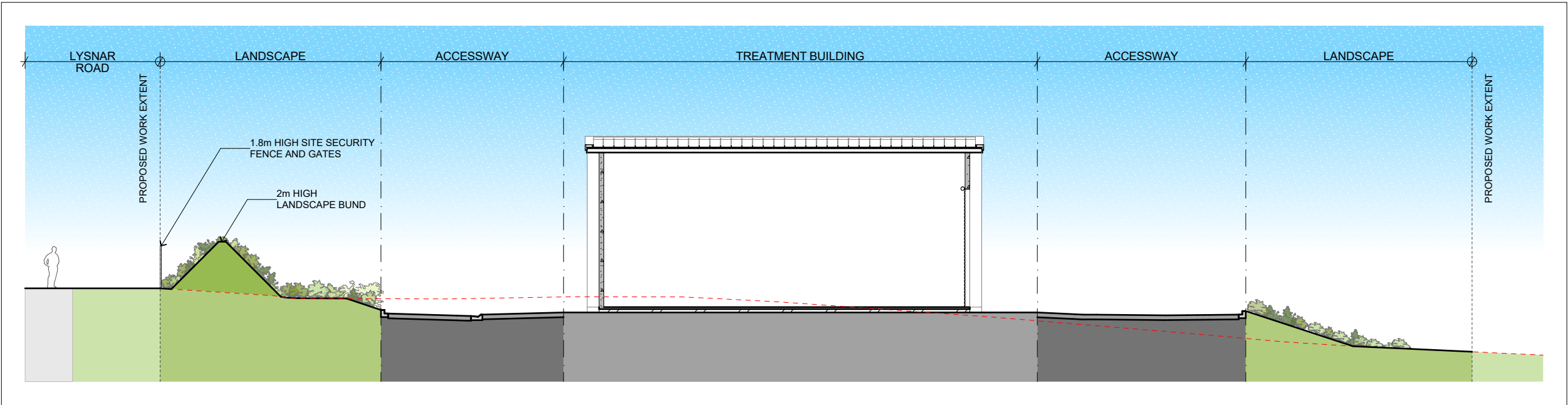
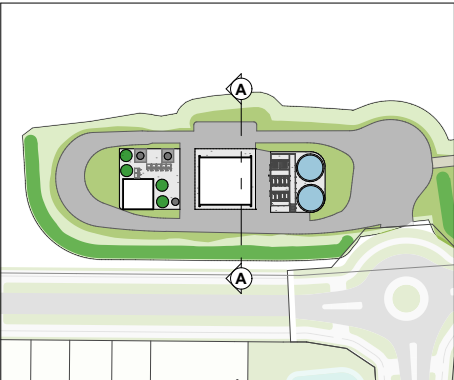
MILLDALE WASTEWATER TREATMENT PLANT

ELEVATIONS

STATUS	FAST TRACK APPLICATION	REV
SCALE	1:200 @A3	1
COUNCIL	AUCKLAND COUNCIL	
DWG NO	P24-189-UD406	



SECTION REFERENCE PLAN



3 SECTION AA
1:200

REVISION DETAILS		BY	DATE
1	FAST TRACK APPLICATION	SW	FEB 2025

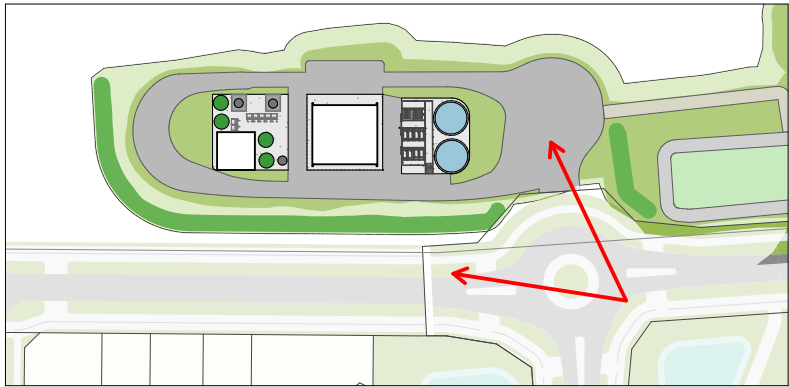
DESIGNED	WOODS	MILLDALE, AUCKLAND
DRAWN	SW	
CHECKED	SW	
APPROVED		WOODS.CO.NZ



MILLDALE WASTEWATER
TREATMENT PLANT

SECTIONS

STATUS	FAST TRACK APPLICATION	REV
SCALE	1:2500, 1:200 @A3	1
COUNCIL	AUCKLAND COUNCIL	
DWG NO	P24-189-UD407	



REVISION DETAILS		BY	DATE
1	FAST TRACK APPLICATION	SW	FEB 2025

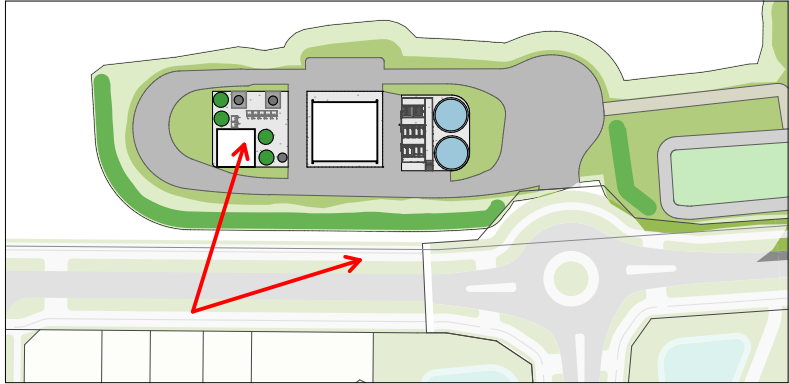
DESIGNED	WOODS	MILLDALE, AUCKLAND
DRAWN	SW	
CHECKED	SW	
APPROVED		WOODS.CO.NZ



MILLDALE WASTEWATER
TREATMENT PLANT

3D VISUALISATION

STATUS	FAST TRACK APPLICATION	REV
SCALE	1:2000 @A3	1
COUNCIL	AUCKLAND COUNCIL	
DWG NO	P24-189-UD408	



REVISION DETAILS		BY	DATE
1	FAST TRACK APPLICATION	SW	FEB 2025

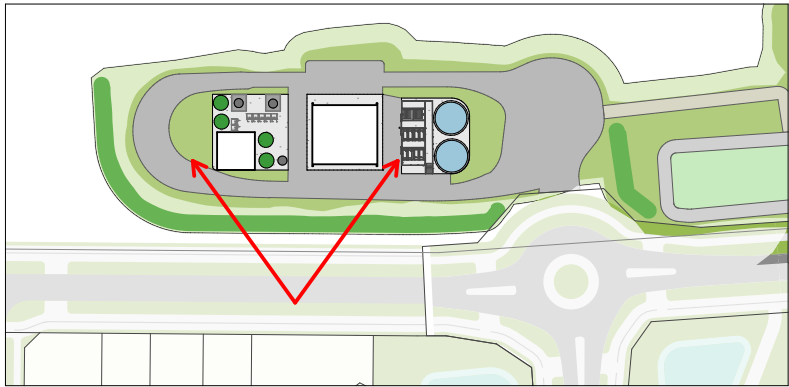
DESIGNED	WOODS	MILLDALE, AUCKLAND
DRAWN	SW	
CHECKED	SW	
APPROVED		WOODS.CO.NZ



MILLDALE WASTEWATER
TREATMENT PLANT

3D VISUALISATION

STATUS	FAST TRACK APPLICATION	REV
SCALE	1:2000 @A3	1
COUNCIL	AUCKLAND COUNCIL	
DWG NO	P24-189-UD409	



REVISION DETAILS		BY	DATE
1	FAST TRACK APPLICATION	SW	FEB 2025

DESIGNED	WOODS	MILLDALE, AUCKLAND
DRAWN	SW	
CHECKED	SW	
APPROVED		WOODS.CO.NZ



MILLDALE WASTEWATER
TREATMENT PLANT

3D VISUALISATION

STATUS	FAST TRACK APPLICATION	REV
SCALE	1:2000 @A3	1
COUNCIL	AUCKLAND COUNCIL	
DWG NO	P24-189-UD410	