

C-27  
 AREA=6.374 Ha  
 $Q_2=0.656m^3/s$   
 $Q_{10}=1.402m^3/s$   
 $Q_{100}=2.445m^3/s$

C-28  
 AREA=6.002 Ha  
 $Q_2=0.707m^3/s$   
 $Q_{10}=1.454m^3/s$   
 $Q_{100}=2.567m^3/s$

C-29  
 AREA=3.304 Ha  
 $Q_2=0.411m^3/s$   
 $Q_{10}=0.855m^3/s$   
 $Q_{100}=1.530m^3/s$

C-42  
 AREA=8.6228 Ha  
 $Q_2=0.545m^3/s$   
 $Q_{10}=1.398m^3/s$   
 $Q_{100}=2.801m^3/s$

C-33  
 AREA=3.284 Ha  
 $Q_2=0.419m^3/s$   
 $Q_{10}=0.817m^3/s$   
 $Q_{100}=1.456m^3/s$

C-30  
 AREA=2.764 Ha  
 $Q_2=0.378m^3/s$   
 $Q_{10}=0.726m^3/s$   
 $Q_{100}=1.308m^3/s$

C-1  
 AREA=15.434 Ha  
 $Q_2=0.906m^3/s$   
 $Q_{10}=2.327m^3/s$   
 $Q_{100}=4.647m^3/s$

C-32  
 AREA=5.227 Ha  
 $Q_2=0.623m^3/s$   
 $Q_{10}=1.264m^3/s$   
 $Q_{100}=2.233m^3/s$

C-31  
 AREA=4.300 Ha  
 $Q_2=0.539m^3/s$   
 $Q_{10}=1.065m^3/s$   
 $Q_{100}=1.894m^3/s$

- NOTES
1. ALL WORKS TO BE IN ACCORDANCE WITH AUCKLAND COUNCIL STANDARDS.
  2. COORDINATES IN TERMS OF NZ GEODETIC DATUM MT EDEN 2000. LEVELS IN TERMS OF THE AUCKLAND VERTICAL DATUM 2016.
  3. PLEASE REFER TO MAVEN ASSOCIATES FLOOD MODELING REPORT REV G FOR FLOOD MODELLING OF CATCHMENTS
  4. CATCHMENT AREAS SHOWN DO NOT INCLUDE SWALE AND POND AREAS

LEGEND

- EX BDY
- PR BDY
- CATCHMENT BDY
- CATCHMENT NUMBER
- SW POND 1 CATCHMENT
- SW POND 2 CATCHMENT
- SW POND 3 CATCHMENT
- SW POND 4 CATCHMENT
- DIRECTLY TO AWAKERI WETLAND

A	RESOURCE CONSENT	YW	02/2025
Rev	Description	By	Date
Survey	SURVEYWORK		02/2021
Design	YW		11/2024
Drawn	SP		11/2024
Checked	LC		02/2025

**Maven Associates**  
 09 571 0050  
 info@maven.co.nz  
 www.maven.co.nz  
 5 Owens Road, Epsom  
 Auckland 1023

Project  
**SUNFIELD DEVELOPMENT  
 ARDMORE, AUCKLAND  
 MASTERPLANNING  
 FOR SUNFIELD  
 DEVELOPMENTS LIMITED**

Title  
**PROPOSED  
 STORMWATER CATCHMENT  
 PLAN: SHEET 5**

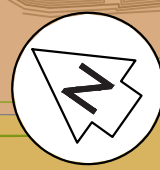
Project no.	215010
Scale	1:2500 @ A3
Cad file	215010-M-C480.DWG
Drawing no.	M-C485
Rev	<b>A</b>

**RESOURCE CONSENT**

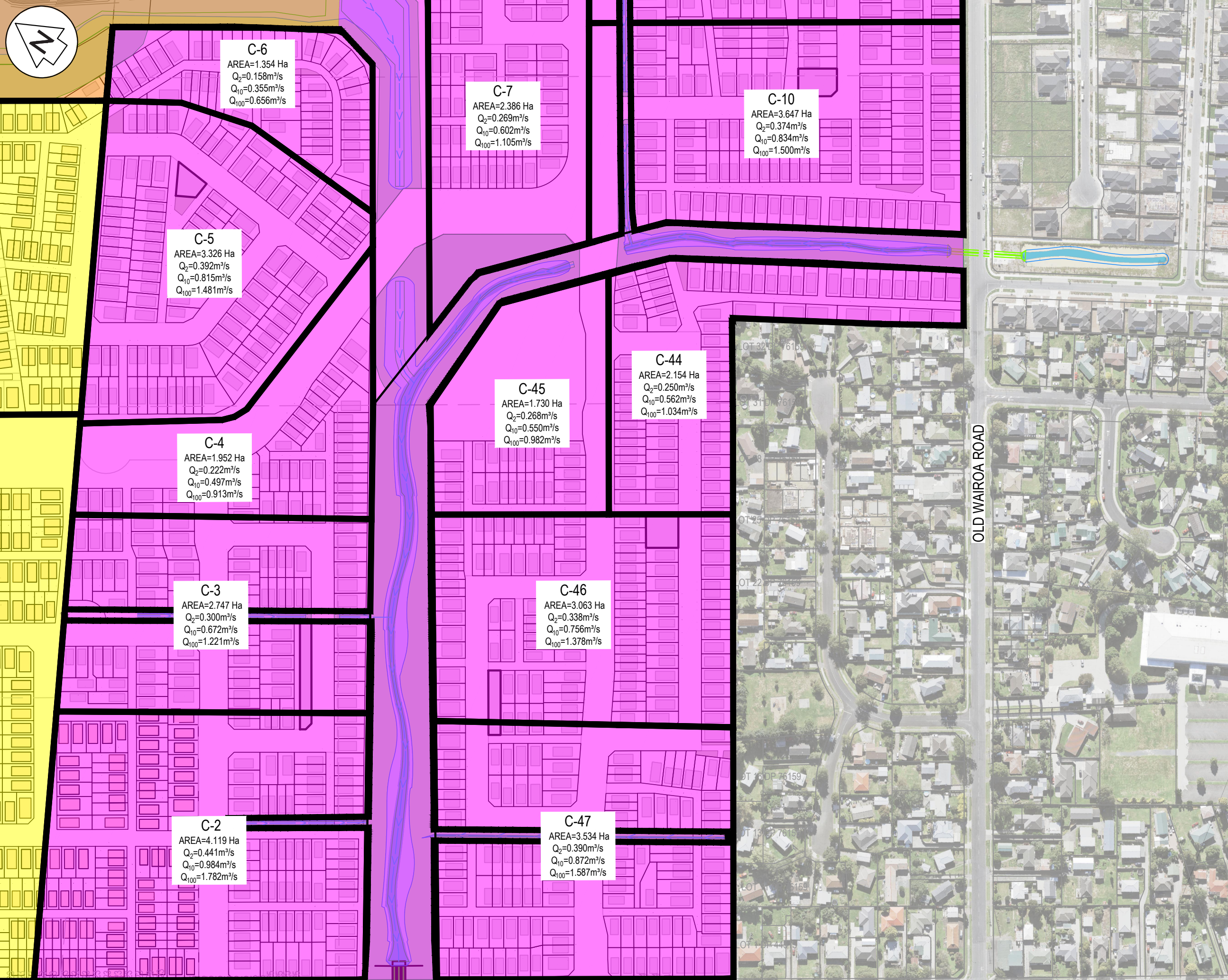
COSGROVE ROAD

DATE: 2/7/25 FILE PATH: F:\MAVEN\PROJECTS\215010 - SUNFIELD\DWG\3-PRODUCTION\MASTER PLAN\215010-M-C480.DWG





- NOTES
1. ALL WORKS TO BE IN ACCORDANCE WITH AUCKLAND COUNCIL STANDARDS.
  2. COORDINATES IN TERMS OF NZ GEODETIC DATUM MT EDEN 2000. LEVELS IN TERMS OF THE AUCKLAND VERTICAL DATUM 2016.
  3. PLEASE REFER TO MAVEN ASSOCIATES FLOOD MODELING REPORT REV G FOR FLOOD MODELLING OF CATCHMENTS
  4. CATCHMENT AREAS SHOWN DO NOT INCLUDE SWALE AND POND AREAS



LEGEND

- EX BDY
- PR BDY
- CATCHMENT BDY
- CATCHMENT NUMBER
- SW POND 1 CATCHMENT
- SW POND 2 CATCHMENT
- SW POND 3 CATCHMENT
- SW POND 4 CATCHMENT
- DIRECTLY TO AWAKERI WETLAND

A	RESOURCE CONSENT	YW	02/2025
Rev	Description	By	Date
Survey	SURVEYWORK		02/2021
Design	YW		11/2024
Drawn	SP		11/2024
Checked	LC		02/2025

**Maven Associates**  
 09 571 0050  
 info@maven.co.nz  
 www.maven.co.nz  
 5 Owens Road, Epsom  
 Auckland 1023

Project  
**SUNFIELD DEVELOPMENT  
 ARDMORE, AUCKLAND  
 MASTERPLANNING  
 FOR SUNFIELD  
 DEVELOPMENTS LIMITED**

Title  
**PROPOSED  
 STORMWATER CATCHMENT  
 PLAN: SHEET 6**

Project no.	215010
Scale	1:2500 @ A3
Cad file	215010-M-C480.DWG
Drawing no.	M-C486
Rev	<b>A</b>

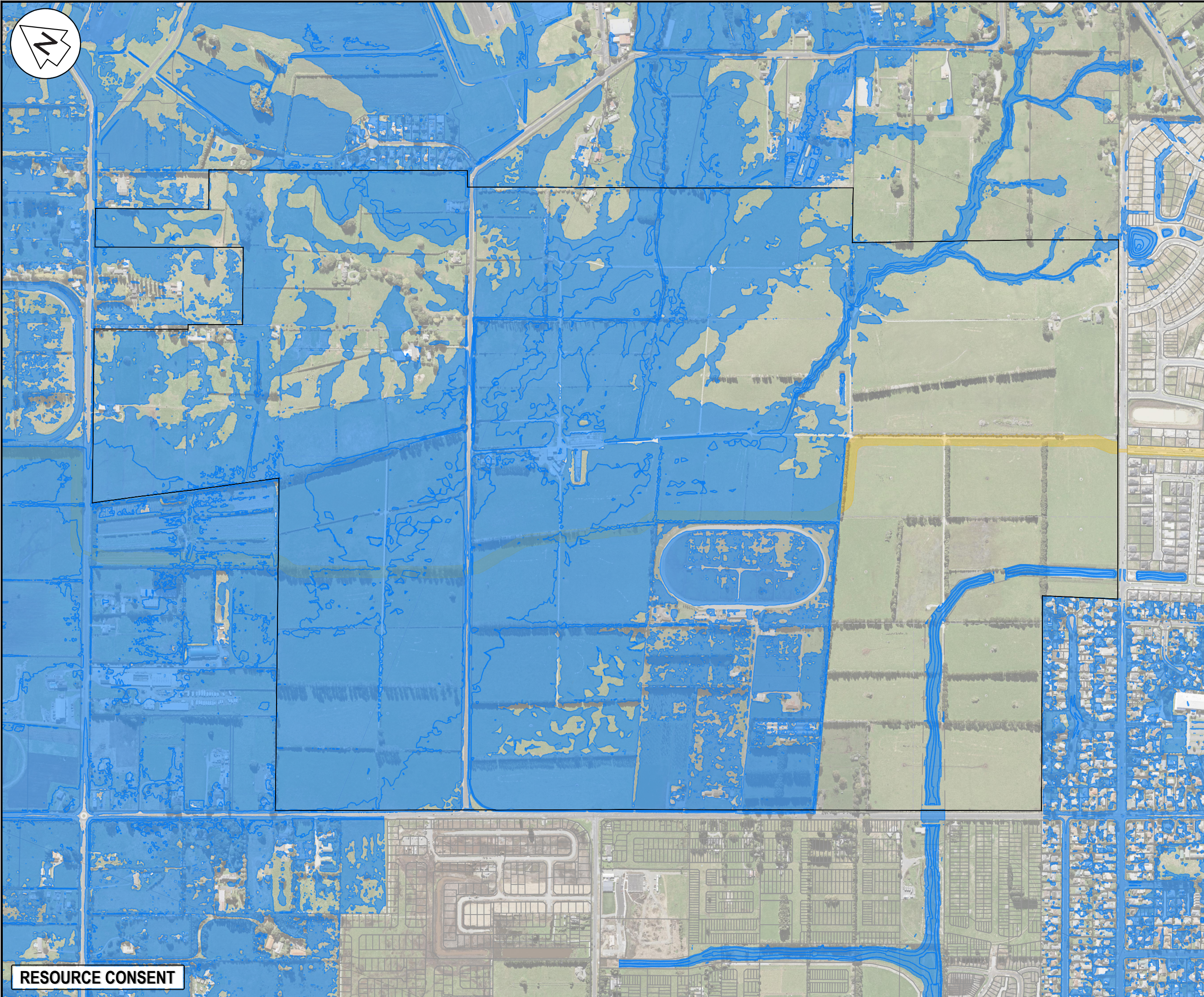
DATE: 2/2/25 FILE PATH: F:\Maven\PROJECTS\215010 - SUNFIELD\DWG\3-PRODUCTION\MASTER PLAN\N\215010-M-C480.DWG

**RESOURCE CONSENT**

COSGROVE ROAD

OLD WAIROA ROAD





- NOTES
1. ALL WORKS TO BE IN ACCORDANCE WITH AUCKLAND COUNCIL STANDARDS.
  2. COORDINATES IN TERMS OF NZ GEODETIC DATUM MT EDEN 2000. LEVELS IN TERMS OF THE AUCKLAND VERTICAL DATUM 2016.
  3. IT IS THE CONTRACTORS RESPONSIBILITY TO LOCATE ALL SERVICES THAT MAY BE AFFECTED BY THEIR OPERATIONS.
  4. PIPE BEDDING: 0 - 10% GRANULAR BEDDING, 10 - 20% WEAK CONCRETE BEDDING. GREATER THAN 20% WEAK CONCRETE BEDDING (7MPA PLUS ANTI SCOUR BLOCKS AT 6m CRS).
  5. EACH CONNECTION SHALL BE MARKED BY A 50mmX50mm TREATED PINE STAKE EXTENDING 600mm ABOVE GROUND LEVEL WITH THE TOP PAINTED. THIS MARKER POST SHALL BE PLACED ALONGSIDE A TIMBER MARKER INSTALLED AT THE TIME OF PIPELAYING AND EXTENDING FROM THE CONNECTION TO 150mm BELOW FINISHED GROUND LEVEL. CONNECTIONS SHALL BE ACCURATELY INDICATED ON "AS BUILT" PLANS.
  6. APPROVED HARDFILL IS TO BE USED IN BACKFILLING OF ALL ROAD CROSSINGS AND VEHICLE CROSSINGS TO COUNCIL STANDARDS.
  7. HEAVY DUTY MANHOLE LIDS AND FRAMES TO BE USED IN TRAFFICKED AREAS.
  8. ALL MANHOLES ARE TO BE 1050mmØ PRECAST CONCRETE UNLESS SHOWN OTHERWISE.
  9. ALL CATCHPIT LEADS SHALL HAVE MIN COVER 1.0m.
  10. ALL LINES TO BE ABANDONED SHALL BE SEALED AT EACH END. TIMING OF ALL SEALING TO BE COORDINATED WITH COUNCIL STAFF.
  11. ALL LOT CONNECTION TO BE MIN 100mm uPVC SN16 UNLESS SHOWN OTHERWISE.

LEGEND

---	EX BDY
---	SITE BDY
Blue Area	1% AEP FLOOD PLAIN
Yellow Area	EX FIRST GAS EASEMENT

A	RESOURCE CONSENT	OQ	02/2025
Rev	Description	By	Date
Survey	SURVEYWORK		02/2021
Design	YW		11/2024
Drawn	OQ		11/2024
Checked	JP/LC		02/2025

**Maven Associates**  
 09 571 0050  
 info@maven.co.nz  
 www.maven.co.nz  
 5 Owens Road, Epsom  
 Auckland 1023

Project	
<b>SUNFIELD DEVELOPMENT ARDMORE, AUCKLAND MASTERPLANNING FOR SUNFIELD DEVELOPMENTS LIMITED</b>	
Title	
<b>STORMWATER PRE- DEVELOPEMENT FLOOD PLAN</b>	
Project no.	215010
Scale	1:7500 @ A3
Cad file	215010-M-C490.DWG
Drawing no.	M-C490
Rev	<b>A</b>

DATE: 2/25 FILE PATH: F:\Maven\PROJECTS\215010 - SUNFIELD\DWG\PRODUCTION\MASTER PLANNING\215010-M-C490.DWG

**RESOURCE CONSENT**