

## **Notice of Request for Grant of Right of Access**

28 February 2025

Department of Conservation  
Fast Track Project Lead  
By email: FastTrackApplicationEnquiries@doc.govt.nz  
FAO: Kim Morgan

Ministry of Business, Innovation and Employment  
National Manager Petroleum & Minerals  
By email: John.Buick-Constable@mbie.govt.nz  
FAO: John Buick-Constable

Dear Kim and John

**RE: OCEANAGOLD - WAIHI NORTH PROJECT – NOTICE OF REQUEST FOR GRANT OF RIGHT OF ACCESS UNDER SECTION 59 CROWN MINERALS ACT 1991**

1. Oceana Gold (New Zealand) Limited (**OceanaGold**) will be applying for all approvals necessary under the Fast-track Approvals Act 2024 (**FTAA**) for the construction, operation, maintenance, and closure of the Waihi North Project. The Waihi North Project is listed in Schedule 2 of the FTAA, and it is intended that an application for the project will be lodged with the Environmental Protection Authority on 4 March 2025.
2. The application will seek approval for mining and mining related activities within the Waihi and Wharekirauponga areas, including (but not restricted to):
  - Mineral resource investigation and exploration progression
  - The construction, operation, and maintenance of an underground mine (the **Wharekirauponga Underground Mine/WUG**)
  - The construction, operation, and maintenance of an open pit mine (the **Gladstone Open Pit/GOP**)
  - Associated infrastructure including surface facilities activities, rock stack and stockpile provisions, upgrades to existing processing facilities, and tailings storage facilities
  - Remediation and closure activities.
3. The approvals being applied for will include approvals that outside of the FTAA process would ordinarily be required under section 61(1AA)(a) of the Crown Minerals Act 1991 (**CMA**). That is, an initial access arrangement and a variation to an existing access arrangement in relation to OceanaGold's Tier 1 mining permits from His Majesty the King in Right of New Zealand (**Crown**), acting by and through the Minister of Conservation and the Minister of Energy and Resources (the **Ministers**), for surface access to Crown land (public conservation land) for exploration and mining-related activities.
4. This letter constitutes formal notice to the Ministers under section 59 of the CMA of OceanaGold's request for the grant of rights of access to explore and mine on or in Crown land and intention to obtain two access arrangements as specified in Appendices 1 and 2.
5. OceanaGold anticipates that the FTAA process will allow consideration of relevant matters contained in section 61(2) of the CMA and that the two access arrangement approvals will make appropriate provision for the matters identified in section 60 of the CMA.

6. If the Ministers have any questions or matters they would like to discuss associated with the application for the Waihi North Project under the FTAA, or the rights of access being requested, please let us know.

Yours sincerely

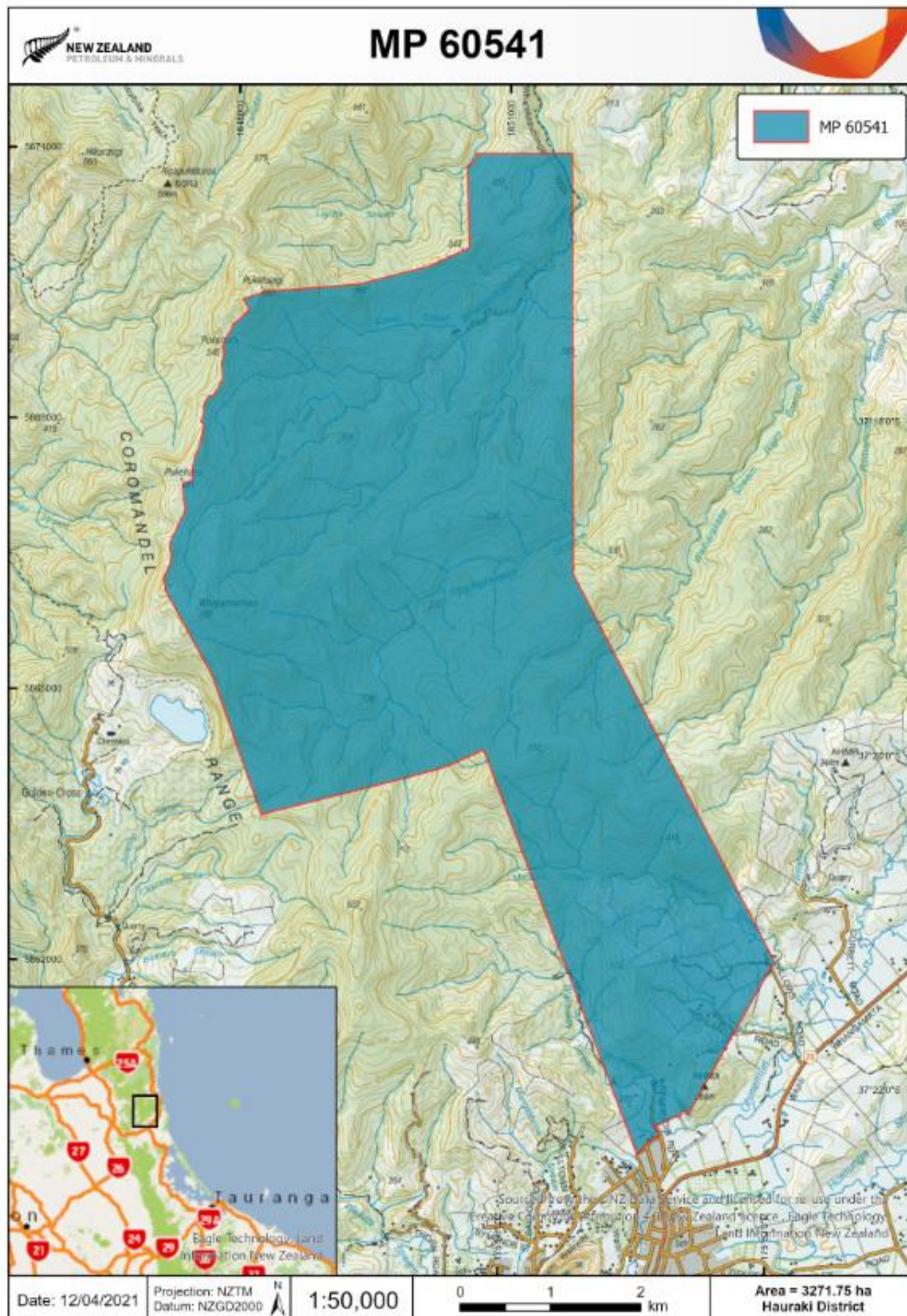


**Alison Paul**  
*SVP Legal & Public Affairs*  
**OCEANA GOLD (NEW ZEALAND) LIMITED**

## APPENDIX 1 – NEW WHAREKIRAUPONGA ACCESS ARRANGEMENT (AA)

### LAND AFFECTED:

The land affected by the Wharekirauponga AA is the area contained within Wharekirauponga Mining Permit 60541 shown below.



For context OceanaGold refers to Figure 1 Overview of the Waihi North Project, which includes:

- Wharekirauponga Underground Mine, dual tunnel, surface exploration, monitoring and pest control (Area 1).
- Willows Farm Surface Facilities Area, access tunnel and supporting infrastructure (Area 2).
- Wharekirauponga Access Tunnel Corridor (Area 3).
- Services Trench Corridor (Area 4).
- Gladstone Open Pit / Tailings Storage Facility and Waihi Surface Facilities Area (Area 5).
- Northern Rock Stack and borrow pits (Area 6).
- Tailings Storage Facility 3 and borrow pits (Area 7).

Note that the Services Trench Corridor (Area 4 in Figure 1) forms part of separate approvals processes which will remain outside the WNP Fast-track substantive application.

A small selection of activities associated with the WNP will occur outside Areas 1-7 comprising: the operation of the existing conveyor in the reverse direction, terrestrial and riparian restoration and enhancement planting, and the establishment of carparking at Kenny Street, Waihi.



#### PURPOSE FOR WHICH RIGHT OF ACCESS IS REQUIRED:

The Waihi North Project will, in stages, expand OceanaGold's existing Waihi gold and silver mining operations including establishing new open pit and underground mines, and extending the life of the mine from expiry in 2030 to 2040, including:

- exploration drill sites within Crown land administered by the Department of Conservation (broadly a doubling of current exploration activity – refer to Table 3 below) and 4 new geotechnical drilling sites aligned with the proposed twin decline corridor;
- a new underground mine at Wharekirauponga with associated twin decline access to explore and mine including 4 ventilation or escapeway shafts capped at surface within Crown land or road reserve for airflow and safety;
- a portal entrance, waste rock storage and surface facilities servicing the underground mine located on OceanaGold's private land at Willows Road;
- An upgrade of the existing processing plant and water treatment facilities at Waihi (including re-consenting the existing discharges from these facilities);
- a new open pit on OceanaGold's private land at Gladstone Hill (with capacity to co-dispose waste and tailings);
- modifications to an existing overland rock conveyor system;
- a third tailings storage facility located adjacent to the two existing tailings storage facilities plus a new rock storage facility (with capacity to co-dispose waste and encapsulated filtered tailings) and associated borrow sites;
- associated access and services tunnels, trenches, roads and pipelines;
- associated on-site and off-site environmental baseline and impact surveys, monitoring activities and mitigation and enhancement activities (including predator control programmes);
- associated exploration, geotechnical and hydrogeological activities and infrastructure at locations throughout the project footprint.

As set out in Table 3 below, OceanaGold proposes to establish additional exploration and investigation drill sites, pumping test sites, and vent shaft exploration measures in locations within the Coromandel Forest Park within the area of Wharekirauponga Mining Permit 60541. Table 3 also details the associated limited vegetation clearance required for each of these sites, which in total will comprise nominally 6,600 m<sup>2</sup> / 0.66 ha, and approximately 50% is temporary (rehabilitated within 6 months of clearing). This is a small footprint (approximately 0.0009%) of the 71,899 ha Coromandel Forest Park.

Table 3: Area 1 Vegetation Clearance

Description	Number of Sites	Clearance per site (m2)	Total Clearance (m2)
<b>Currently Approved Investigation and Exploration Activities</b>			
Exploration drill sites (also used as helipads and temporary accommodation for drill crews)	12	150	1,800
Near-stream piezometers	12	Minimal disturbance e.g. canopy trimming and moving ground cover	
<i>Total currently approved clearance</i>			<i>1,800</i>

<b>Proposed Additional Investigation and Exploration Activities</b>			
Exploration drill sites	8	150	1,200
Geotechnical investigative drill sites within existing Access Arrangement area	4	150	600
Geotechnical investigative drill sites above the WUG Dual Tunnel	4	150	600
Hydrogeological investigative drilling	4	150	600
Ventilation sites (including pumping tests)	Up to 4	900	3,600
Vent shaft geotechnical investigation / piezometers	50	Minimal disturbance e.g. canopy trimming and moving ground cover	
<i>Total proposed additional clearance and disturbance</i>			<i>6,600</i>
<b>Total Combined Clearance and Disturbance of Currently Approved and Proposed Additional Activities</b>			<b>8,400 m<sup>2</sup></b>

#### **PROPOSED PROGRAMME OF WORK**

**TYPE:** Mine resource investigation and exploration works and associated infrastructure, including drill sites, pumping test sites, and vent shaft exploration sites. Details of the proposed programme of work will be included in the Fast-track application and subsequent work programmes provided to the Department of Conservation.

For clarity, the Wharekirauponga Access Arrangement does not include mining carried out below the surface of the land. In accordance with section 57 of the Crown Minerals Act, prospecting, exploration, or mining carried out below the surface of any land does not constitute “prospecting, exploration, or mining on or in land” if it:

- will not or is not likely to cause any damage to the surface of the land or any loss or damage to the owner or occupier of the land; or
- will not or is not likely to have any prejudicial effect in respect of the use and enjoyment of the land by the owner or occupier of the land; or
- will not or is not likely to have any prejudicial effect in respect of any possible future use of the surface of the land.
- 

OceanaGold has carefully developed the WNP in a manner to ensure that the surface of the Coromandel Forest Park is not damaged by the Wharekirauponga Underground Mine, will not affect the use and enjoyment of the land by the Department of Conservation, and will not have a prejudicial effect on future uses on the surface of the Coromandel Forest Park.

**DURATION:** aligned with the duration of the Waihi North Project and completion of associated rehabilitation (across a period of 18+ years).

**LIKELY ADVERSE EFFECT ON THE LAND:** nil, will be managed by comprehensive AA conditions.

**LIKELY ADVERSE EFFECT ON THE OWNER OR OCCUPIER OF THE LAND:** nil, will be managed by comprehensive AA conditions.

#### **PROPOSED COMPENSATION AND SAFEGUARDS AGAINST ANY LIKELY ADVERSE EFFECTS**

In the FTAA application OceanaGold will propose conditions to address compensation and safeguards against any likely effects. The proposed conditions will reflect compensation and safeguard conditions from within

OceanaGold's existing Wharekirauponga exploration access arrangement 48614-AA which has operated effectively since 2 December 2016. The conditions will operate consistently across both the Wharekirauponga and Wahi access arrangements.

**TYPE OF PERMIT HELD BY OCEANAGOLD:**

OceanaGold holds Wharekirauponga mining permit 60541 which is classified as a Tier 1 permit pursuant to section 2B of the CMA. The permit expiry date is 4 August 2060. The permit is maintained in good standing.

**DIRECT NET ECONOMIC AND OTHER BENEFITS OF THE PROPOSED ACTIVITIES – COMMERCIAL IN CONFIDENCE**

Key milestones of the WNP in summary are:

- Expected capital expenditure and exploration activity in the first 3 years of the project of at least \$30m per annum (the investment phase) starting in 2025.
- Mining development and production (operations phase) over 13 years or more, starting in 2028.
- A remediation phase of 2 years from year 17 of the project unless additional ore resources are discovered in the meantime (considered likely).

The WNP will increase the scale and duration of the economic benefits that OceanaGold's Waihi operations already provide to the regional and national economy:

- The WNP is expected to generate over \$1 billion dollars of additional capital investment.
- The importance of the WNP is further enhanced because gold is now recognised as a critical mineral, meaning that the New Zealand Government is committed to exploring strategic pathways and wider system settings to support the development and supply of critical minerals that can be produced in New Zealand.
- Over its lifetime, the WNP will result in an additional \$5.2 billion of silver and gold exports. Therefore the WNP will make an important contribution to meeting the Government's goal of doubling the value of New Zealand's mineral exports to \$3 billion by 2035.
- The Project will support an average of 895 full time equivalent (FTE) jobs over 18 years of the Project, including 389 highly paid jobs at the mine (directly and contractors); over 240 jobs among suppliers; and nearly 200 jobs supported by the consumption of these workers.
- The WNP will deliver significant contributions to the regional economy, including \$1,086 million in the Hauraki District (6% of the district's economy); \$252 million in the rest of the Waikato Region (0.2% of the region's economy); and \$641 million in the rest of New Zealand.

Biodiversity

A key element of the Waihi North Project has been managing its effect on biodiversity values. In short, OceanaGold has sought to design the project such that overall, it will have a net benefit to biodiversity values in the region.

Central to achieving that outcome has been the inclusion of:

- Designing the Wharekirauponga mine to substantially remain at depth underground, thereby avoiding direct impacts on indigenous biodiversity within the Coromandel Conservation Park.
- Measures to ensure all non-trivial adverse effects (including potential effects) on terrestrial and aquatic ecology are managed following a strict avoid, remedy, mitigate, offset hierarchy, such that a no net loss, and preferably net gain outcome is achieved.
- The Waihi North Biodiversity Project as part of the Waihi North Project: an \$8.4 million predator control and ecological enhancement project, focused within an area of up to 18,870 ha of the southern Coromandel Forest Park will aim to achieve long-term (inter-generational) positive ecological outcomes for the area. Importantly, the Waihi North Biodiversity Project is not mitigation,

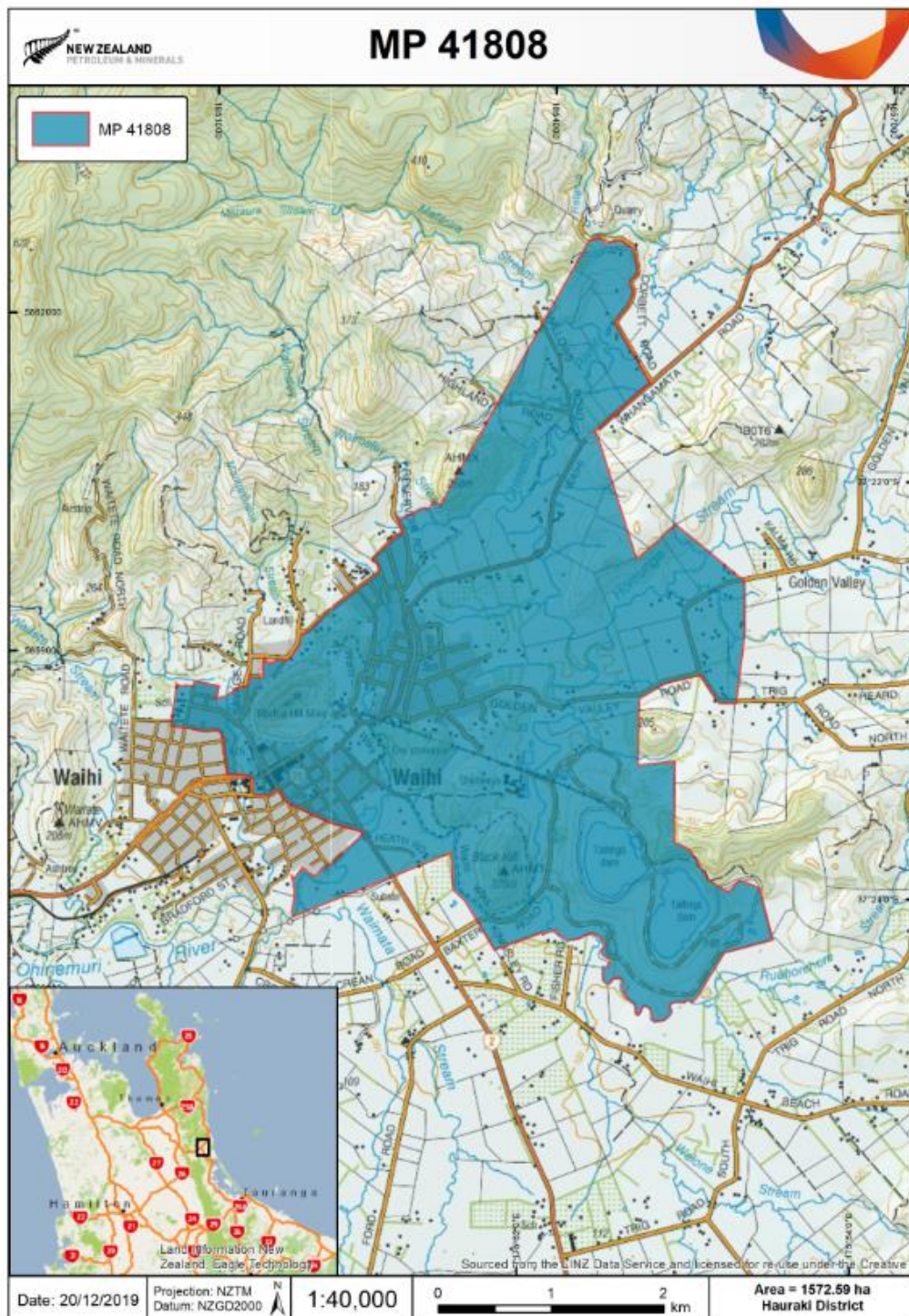
offsetting or compensation for adverse effects of the Waihi North Project. Rather, it is a positive beneficial project OceanaGold proposes in addition to measures designed to address the mining-related impacts of the Waihi North Project.

Additionally, the substantial amount of ecological field and survey work that OceanaGold has been doing has increased knowledge about the indigenous Archey's frog, which generally benefits New Zealand. This has also enabled OceanaGold to design a WNP effects management plan, focused around predator control but also including funding into research for predator control techniques to benefit frogs, which will ultimately provide for a significant net benefit to Archey's frogs.

## APPENDIX 2 – VARIATION OF EXISTING WAIHI ACCESS ARRANGEMENT 62342-AA (AA)

### LAND AFFECTED:

OceanaGold has an existing access arrangement 62342-AA relating to mining and mining operations at Martha Pit which has operated effectively since 17 January 2018. The land affected by the Waihi AA is the area contained within the Favona Mining Permit 41808 shown below.



For context OceanaGold refers to Figure 1 Overview of the Waihi North Project, which includes:

- Wharekirauponga Underground Mine, dual tunnel, surface exploration, monitoring and pest control (Area 1).
- Willows Farm Surface Facilities Area, access tunnel and supporting infrastructure (Area 2).
- Wharekirauponga Access Tunnel Corridor (Area 3).
- Services Trench Corridor (Area 4).
- Gladstone Open Pit / Tailings Storage Facility and Waihi Surface Facilities Area (Area 5).
- Northern Rock Stack and borrow pits (Area 6).
- Tailings Storage Facility 3 and borrow pits (Area 7).

Note that the Services Trench Corridor (Area 4 in Figure 1) forms part of separate approvals processes which will remain outside the WNP Fast-track substantive application.

A small selection of activities associated with the WNP will occur outside Areas 1-7 comprising: the operation of the existing conveyor in the reverse direction, terrestrial and riparian restoration and enhancement planting, and the establishment of carparking at Kenny Street, Waihi.



#### **PURPOSE FOR WHICH RIGHT OF ACCESS IS REQUIRED:**

The Waihi North Project will, in stages, expand OceanaGold's existing Waihi gold and silver mining operations including establishing new open pit and underground mines, and extending the life of the mine from expiry in 2030 to 2040, including:

- exploration drill sites within Crown land administered by the Department of Conservation (broadly a doubling of current exploration activity – refer to Table 3 below) and 4 new geotechnical drilling sites aligned with the proposed twin decline corridor;
- a new underground mine at Wharekirauponga with associated twin decline access to explore and mine including 4 ventilation or escapeway shafts capped at surface within Crown land or road reserve for airflow and safety;
- a portal entrance, waste rock storage and surface facilities servicing the underground mine located on OceanaGold's private land at Willows Road;
- An upgrade of the existing processing plant and water treatment facilities at Waihi (including re-consenting the existing discharges from these facilities);
- a new open pit on OceanaGold's private land at Gladstone Hill (with capacity to co-dispose waste and tailings);
- modifications to an existing overland rock conveyor system;
- a third tailings storage facility located adjacent to the two existing tailings storage facilities plus a new rock storage facility (with capacity to co-dispose waste and encapsulated filtered tailings) and associated borrow sites;
- associated access and services tunnels, trenches, roads and pipelines;
- associated on-site and off-site environmental baseline and impact surveys, monitoring activities and mitigation and enhancement activities (including predator control programmes);
- associated exploration, geotechnical and hydrogeological activities and infrastructure at locations throughout the project footprint.

The varied Waihi AA is required to enable activities to occur in and on Crown owned land within the area of the Favona Mining Permit 41808.

#### **PROPOSED PROGRAMME OF WORK**

**TYPE:** Planting and maintenance activities associated with ecological offset and rehabilitation. Details of the proposed programme of work will be included in the Fast-track application and subsequent work programmes provided to the Department of Conservation.

**DURATION:** aligned with the duration of the Waihi North Project and completion of associated rehabilitation (across a period of 18+ years).

**LIKELY ADVERSE EFFECT ON THE LAND:** nil, will be managed by comprehensive AA conditions.

**LIKELY ADVERSE EFFECT ON THE OWNER OR OCCUPIER OF THE LAND:** nil, will be managed by comprehensive AA conditions.

#### **PROPOSED COMPENSATION AND SAFEGUARDS AGAINST ANY LIKELY ADVERSE EFFECTS**

In the FTAA application OceanaGold will propose conditions to address compensation and safeguards against any likely effects. The proposed conditions will reflect compensation and safeguard conditions from within OceanaGold's existing access arrangement 62342-AA which has operated effectively since 17 January 2018 and

Wharekirauponga exploration access arrangement 48614-AA which has operated effectively since 2 December 2016. The conditions will operate consistently across both the Wharekirauponga and Wahi access arrangements.

**TYPE OF PERMIT HELD BY OCEANAGOLD:**

OceanaGold holds Favona mining permit 41808 which is classified as a Tier 1 permit pursuant to section 2B of the CMA. The permit expiry date is 21 March 2044. The permit is maintained in good standing.

**DIRECT NET ECONOMIC AND OTHER BENEFITS OF THE PROPOSED ACTIVITIES – COMMERCIAL IN CONFIDENCE**

Key milestones of the WNP in summary are:

- Expected capital expenditure and exploration activity in the first 3 years of the project of at least \$30m per annum (the investment phase) starting in 2025.
- Mining development and production (operations phase) over 13 years or more, starting in 2028.
- A remediation phase of 2 years from year 17 of the project unless additional ore resources are discovered in the meantime (considered likely).

The WNP will increase the scale and duration of the economic benefits that OceanaGold's Waihi operations already provide to the regional and national economy:

- The WNP is expected to generate over \$1 billion dollars of additional capital investment.
- The importance of the WNP is further enhanced because gold is now recognised as a critical mineral, meaning that the New Zealand Government is committed to exploring strategic pathways and wider system settings to support the development and supply of critical minerals that can be produced in New Zealand.
- Over its lifetime, the WNP will result in an additional \$5.2 billion of silver and gold exports. Therefore the WNP will make an important contribution to meeting the Government's goal of doubling the value of New Zealand's mineral exports to \$3 billion by 2035.
- The Project will support an average of 895 full time equivalent (FTE) jobs over 18 years of the Project, including 389 highly paid jobs at the mine (directly and contractors); over 240 jobs among suppliers; and nearly 200 jobs supported by the consumption of these workers.
- The WNP will deliver significant contributions to the regional economy, including \$1,086 million in the Hauraki District (6% of the district's economy); \$252 million in the rest of the Waikato Region (0.2% of the region's economy); and \$641 million in the rest of New Zealand.